



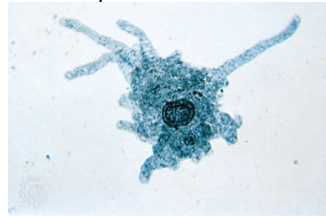
Dichotomous Keys

<http://www.youtube.com/user/Mrsanselmi>

Used to identify the _____ of an _____.

Reading a Dichotomous Key:

Dichotomous Key of Protists	
1a. contains green pigment	go to 2
1b. does not contain green pigment	go to 3
2a. lives in a colony	go to 4
2b. does not live in a colony	go to 5
3a. has cilia or flagella	go to 6
3b. does not have cilia or flagella	<i>Amoeba</i>
4a. colony is long and filamentous	go to 8
4b. colony is spherical	<i>Volvox</i>



↑ Name of Protist:

Writing a Dichotomous Key:



1. _____?	a. If yes, _____
	b. If no, _____
2. _____?	a. If yes, _____
	b. If no, _____
3. _____?	a. If yes, _____
	b. If no, _____
4. _____?	a. If yes, _____
	b. If no, _____
5. _____?	a. If yes, _____
	b. If no, _____