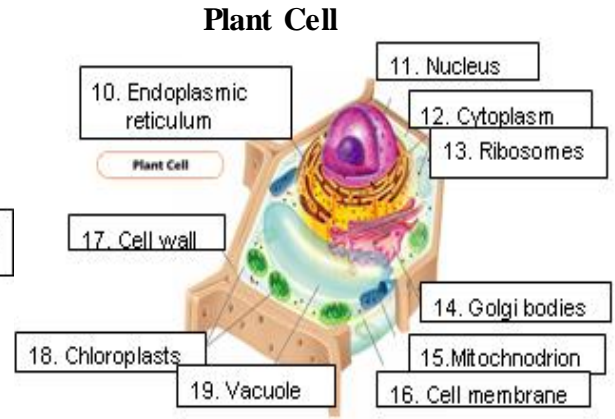
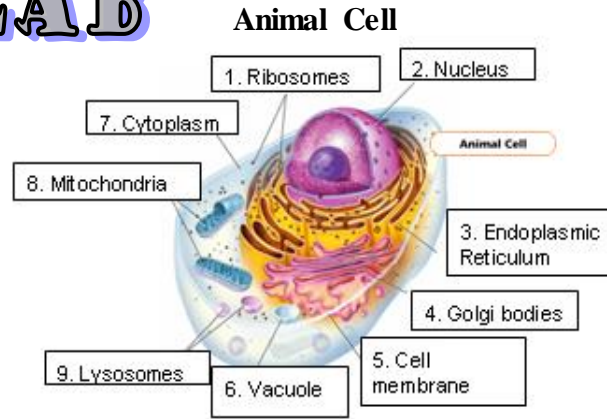


# CELL COOKIE LAB

**Directions:** Make an edible Animal Cell.

1. Gather the items on your plate: icing, cookie, Hot Tamales, Jr. Mints, gumball, gummy Life Saver, sprinkles, etc.
2. Look at the pictures to the right. Use the candy pieces to make your cookie as similar to the animal cell as possible.
3. Describe the role each organelle plays in the cell.
4. Check the correct boxes to indicate if the organelle is found in plant cells or animal cells.
5. List the candy that you used to represent that organelle.
6. When you are finished making your model, raise your hand so the teacher can check your cell cookie model.
7. When your cell cookie has been checked, you may eat it.



<u>Organelle</u>	<u>Description – What does it do?</u>	<u>Animal Cell</u>	<u>Plant Cell</u>	<u>Candy used</u>
1. Cytoplasm				
2. Cell membrane				
3. Nucleus				
4. Nucleolus				
5. Mitochondria				
6. Endoplasmic Reticulum				
7. Vacuole				
8. Lysosome				
9. Ribosome				
10. Golgi Bodies				
11. Chloroplast *				<i>None used</i>
12. Cell wall *				<i>None used</i>

\* = not on your cell cookie model, because you are making an animal cell