

Women - Congress / History

PHOTOCOPY  
PRESERVATION

**WOMEN IN CONGRESS, 1917-1990**

**Prepared under the direction of the  
Commission on the Bicentenary of the  
U.S. House of Representatives**

**by the  
Office of the Historian,  
U.S. House of Representatives**

## REBECCA LATIMER FELTON



(Georgia Department of Archives and History)

*United States Senator*

*Democrat of Georgia*

*Sixty-seventh Congress*

*November 21, 1922–November 22, 1922*

Rebecca Felton's brief and essentially symbolic service in the Senate stood in contrast to her decades of substantive participation in Georgia politics and civic affairs. Outspoken, determined, and irascible, Felton was involved in public life from the 1870s through the 1920s. She first entered politics during her husband's successful campaign for the House

of Representatives and went on to a work as a lecturer and newspaper writer, finally becoming the first woman to serve in the United States Senate.

Rebecca Ann Latimer was born on June 10, 1835, near Decatur, De Kalb County, Georgia. She attended several private schools in the area before graduating from Madison Female

College in 1852. The following year she married William H. Felton, an ordained Methodist minister and physician, and lived with him on a farm near Cartersville, Georgia. In the years following the Civil War, the Feltons worked to restore their heavily-damaged farm, and she taught school. In 1874, Rebecca Felton worked as a campaign manager for her husband who ran for Congress on a ticket opposing the "Bourbon" Democrats. She continued to be a close adviser during his three terms in the House and later service in the state legislature.

In conjunction with her husband's political career and in her own work as a lecturer and writer, Rebecca Felton endorsed many of the crusades of Southern progressivism. She supported woman's suffrage, prohibition, and public education, especially vocational training for girls, while fighting the state's system of convict leasing. Felton was also prone to harsh, personal attacks on perceived enemies and articulated an often brutal vision of social order. Even in an age noted for intolerance and racism, Felton's judgements were frequently extreme. She attacked Jews, Catholics, and blacks, going so far as to endorse mass lynchings of blacks as a warning against suspected rapists. Such newspaper columns attracted great attention up through 1920 when she mounted an attack on Woodrow Wilson and the proposed League of Nations in one of her last public campaigns.

Felton's personal determination, if not her varied political views, was much in evidence in her fleeting Senate career. When Senator Tom Watson, an old Populist ally of the Feltons, died in office on September 26, 1922, Governor Thomas Hardwick designated Felton on October 3 as a temporary successor to the Senate seat. The governor, who opposed the Nineteenth Amendment while a member of Congress, hoped the appointment would appease newly enfranchised women, but never intended for the nominee actually to serve before an elected successor could be chosen prior to the reconvening of Congress. The eighty-seven year old Felton, however, convinced Senator-elect Walter George to delay presenting his credentials so that she might be sworn in and serve for two days.

On November 20, 1922, Felton took her seat in the Senate chamber, and the following day she was sworn in as that body's first woman member and the oldest senator at the time of swearing-in. A day later, when the Senate first proceeded to business and beneath a gallery filled with women assembled for the occasion, Felton made brief remarks before resigning her seat in favor of George who was present for the occasion. She thus gained the further and dubious distinction of being the senator with the shortest term of service.

Felton returned to Cartersville, Georgia, and continued to write on public affairs. She died in Atlanta on January 24, 1930.

# HATTIE WYATT CARAWAY



(Arkansas History Commission)

*United States Senator*

*Democrat of Arkansas*

*Seventy-second-Seventy-eighth Congresses*

*November 13, 1931-January 2, 1945*

The first woman elected to the United States Senate, Hattie Caraway was born Hattie Ophelia Wyatt in Bakerville, Tennessee, on February 1, 1878. After attending public schools and graduating from Dickson (Tennessee) Normal College in 1896, she married Thaddeus Horatius Caraway in February

1902 and moved with him to Jonesboro, Arkansas.

Thaddeus Caraway was elected to the House of Representatives in 1912 and to the Senate in 1920. Following Caraway's death on November 6, 1931, Arkansas Governor Harvey Parnell appointed Hattie Caraway to fill the vacancy until a special election for the re-

mainder of Thaddeus Caraway's term was held in January 1932. Although Caraway won the special election, she was given little chance to win the August 1932 primary for the full six-year term against four opponents, including former Governor Charles H. Brough and former Senator William F. Kirby. Her opportunities improved overnight when Senator Huey P. Long entered the campaign on Caraway's behalf. The charismatic Louisianan effectively portrayed her as a champion of poor white farmers and workers and as a Senator whom monied interests were unable to control. Long genuinely sympathized with Caraway and, with an eye to his possible candidacy for president, was eager to demonstrate that his popularity extended beyond Louisiana. He also hoped to humiliate and frighten Caraway's Arkansas colleague, Senate minority leader Joseph T. Robinson, a zealous enemy of Long. Caraway easily won the primary and was elected in November, defeating independent candidate Rex Floyd.

Although it was rare for Caraway to participate in debate or deliver a speech on the Senate floor, she eventually gained respect as a conscientious senator who generally supported the foreign policy and the domestic economic program of President Roosevelt and was attentive to the needs of her largely agri-

cultural constituency. She was particularly interested in farm relief and flood control. She was a prohibitionist, a critic of lobbying groups, a friend of veterans and a co-sponsor of a proposed Equal Rights Amendment to the Constitution. Like most of her southern colleagues she opposed the anti-lynching law of 1938 and a proposed bill of 1942 to eliminate the poll tax.

At the opening of the Seventy-third Congress in 1933, Caraway was elected chair of the Committee on Enrolled Bills and served in that position until she left the Senate in 1945. She also served on the Committee on Agriculture and Forestry and the Committee on Commerce. In 1938 Caraway won renomination by narrowly defeating Sixth District Representative John L. McClellan, who would later serve Arkansas in the Senate for thirty-four years. She ran for renomination to a third term in 1944 but finished last in a four-candidate race won by Third District Representative J. William Fulbright. Shortly after her legislative career ended she was nominated by Roosevelt and confirmed by the Senate as a member of the Employees' Compensation Commission on which she served from 1946 to 1950. She died in Falls Church, Virginia, on December 21, 1950.

## ROSE McCONNELL LONG



(U.S. Senate Historical Office)

*United States Senator  
Democrat of Louisiana  
Seventy-fourth Congress  
January 31, 1936–January 3, 1937*

The appointment and subsequent election of Rose Long to the Senate seat of her late husband followed a factional dispute that was convoluted even by the standards of Huey Long's Louisiana. After Huey Long's assassination in September 1935, the leaders of his political organization designated candidates for the primary of January 21, 1936, and the

April elections. Governor O.K. Allen was nominated to fill out the remainder of Long's Senate term while the speaker of the Louisiana House of Representatives, Allen Ellender, would run for the succeeding six-year term. Richard W. Leche was chosen as candidate for governor, and Earl Long, Huey's brother, would displace the acting lieutenant governor,

James A. Noe. When Allen died before his election to the short Senate term, Noe succeeded him as governor and refused to carry out the plans of the Long organization that had snubbed him. He refused their requests to appoint Ellender, preferring to name Rose McConnell Long on January 31, 1936.

Rose Long was sworn in on February 10 and on April 21 she won the special election held to fill the remaining months in her husband's term. She took the oath of office a second time on May 19, 1936, and served until the end of the Seventy-fourth Congress. Her five committee assignments were Claims, Immigration, Interoceanic Canals, Post Offices and Post Roads, and Public Lands and Surveys. From her seat on Public Lands and Surveys she proposed a successful measure to enlarge the Chalmette National Park on the site of the battle of New Orleans. In March of

1936 she joined her Louisiana colleague, John H. Overton, and the senators from Arkansas and Texas to seek authorization of the attendance of the Marine Band at centennial celebrations in Arkansas and Texas and at the forty-sixth Confederate Reunion in Shreveport. Long's low-key service on committee and in the full Senate was in marked contrast to the flamboyance of her husband. She retired to Shreveport at the end of her term.

Rose McConnell was born in Greensburg, Indiana, on April 8, 1892, and moved with her family to Shreveport, Louisiana, in 1901. She married Huey Long in 1913 and worked as a secretary while he attended law school at Tulane University. Their son, Russell Long was elected to the Senate from Louisiana in 1948 and served until 1987. Rose Long died in Boulder, Colorado, on May 27, 1970.

## DIXIE BIBB GRAVES



(Alabama Department of Archives and History)

*United States Senator  
Democrat of Alabama  
Seventy-fifth Congress*

*August 20, 1937–January 10, 1938*

Governor Bibb Graves of Alabama provoked a storm of criticism in 1937 when he named his wife, Dixie Bibb Graves, to fill the Senate seat vacated by Hugo Black who resigned to accept his nomination as associate justice of the U.S. Supreme Court. By avoiding the endorsement of intra-party rivals for Black's seat, Governor Graves maintained his politi-

cal allies at the same time that he subjected himself to charges of nepotism and a disregard for the needs of constituents.

For her part, Dixie Bibb Graves found celebrity and condemnation for her speech on the Senate floor on November 19, 1937, during debate on the Wagner-Van Nuys Anti-Lynching Bill. Federal enforcement of an anti-lynch-

ing law, she maintained, was a dangerous infringement of state sovereignty and an insult to the law enforcement officers of the South whom she thought responsible for a decrease in lynching over the previous decade. Without federal interference, lynching might be eliminated in five years, according to Graves. While northern newspapers denounced Graves' remarks, Governor Graves distributed copies of the speech throughout Alabama, and white citizens mounted a write-in campaign to place Dixie Graves' name in the special election for the remainder of Black's term.

Graves declined to run in the special election which was won by Representative Lister Hill when he defeated former Senator J. Thomas Heflin. On January 10, 1938, six days after the special election, Graves resigned

from the Senate in order that her husband might appoint Hill to the seat immediately. During her five months in office she served on the Committee on Claims, the Committee on Education and Labor, and the Committee on Mines and Mining.

Dixie Bibb was born July 26, 1882, on a plantation at Hope Hull, Alabama, near Montgomery, where she was raised with her orphaned cousin, Bibb Graves. The two married in 1900. She was involved in a wide variety of civic organizations and clubs such as the Women's Christian Temperance Union and the Alabama Federation of Women's Clubs. From 1915 to 1917 she was president of the United Daughters of the Confederacy. Graves died in Montgomery, Alabama, on January 21, 1965.

## GLADYS PYLE



(U.S. House of Representatives)

*United States Senator  
Republican of South Dakota  
Seventy-fifth Congress  
November 9, 1938–January 3, 1939*

Gladys Pyle came to Washington in 1938 as the first Republican woman elected to the Senate, but she never was sworn in as a member of that body. The Senate adjourned in June 1938, five months before Pyle's victory in the special election of November 9, 1938, held to fill the vacancy caused by the death of Senator Peter Norbeck. She easily defeated

state legislator John T. McCullen for the right to serve the final weeks of Norbeck's term. In her two months as a senator, Pyle worked with governmental agencies responsible for programs affecting South Dakota and participated in national Republican Party meetings.

The disappointing Senate career of Pyle stood in contrast to her long and influential

participation in the government of her native South Dakota. She was born in Huron on October 4, 1890, and attended schools in Miller, Wessington, and Huron. Pyle graduated from Huron College and entered graduate work at the American Conservatory of Music and the University of Chicago. She returned to South Dakota to work as a high school teacher and principal.

The daughter of one of the state's leading suffragists, Pyle showed an early interest in politics and won election as the first woman member of the state legislature in 1922. After

four years service as a state representative, she served four years as secretary of state. In 1930 she was an unsuccessful candidate for governor. Before her election to the Senate, Pyle worked in the life insurance business.

Pyle continued in public life, serving on the state board of charities and corrections from 1943 to 1957, and renewed her insurance business from 1950 to 1986. At the Republican National Convention of 1940, she nominated South Dakota's favorite-son presidential candidate, Governor Harlan J. Bushfield. Pyle died in Huron on March 14, 1989.

## VERA CAHALAN BUSHFIELD



(South Dakota State Historical Society)

*United States Senator*  
*Republican of South Dakota*  
*Eightieth Congress*  
*October 6, 1948-December 26, 1948*

Vera Bushfield's brief Senate service in the autumn of 1948 never brought her to Washington, where the Eightieth Congress had recessed for the remainder of the election year. She stayed in her native South Dakota to concentrate on constituent services during the last three months of her late husband's term. Senator Harlan J. Bushfield died September

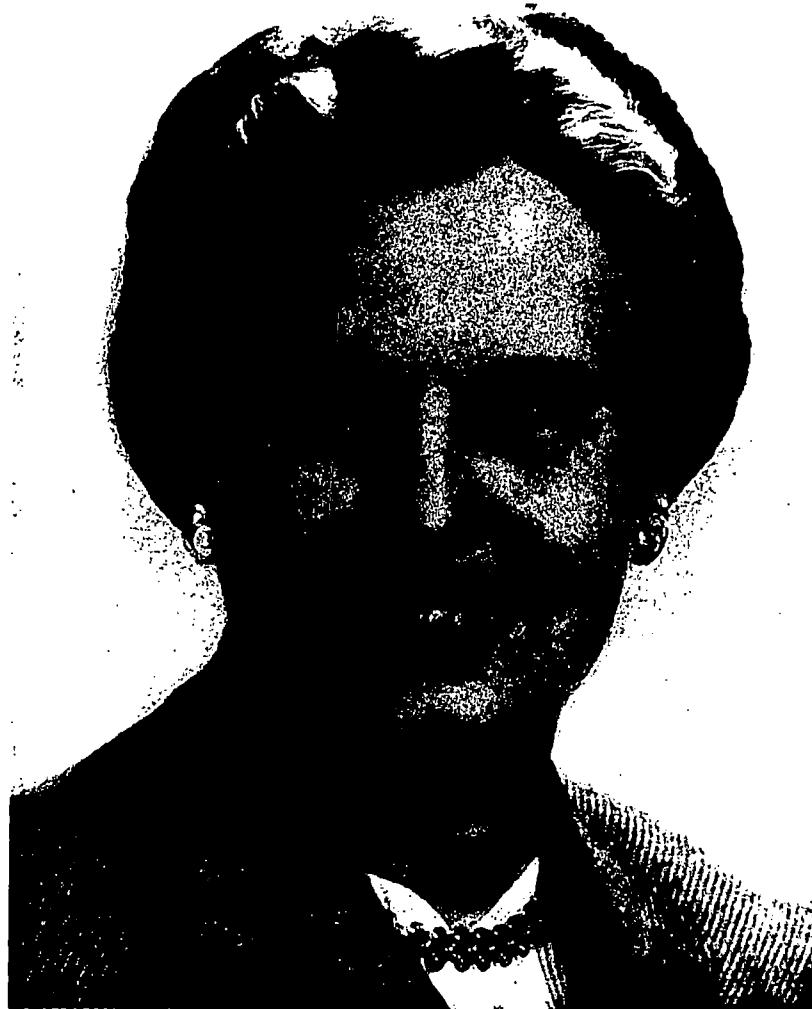
27, 1948, after announcing earlier in the year that he did not intend to run for reelection in November. Governor George T. Mickelson appointed Vera Bushfield to fill out the term while a successor was chosen in the general election. She resigned her seat six days before the end of the Eightieth Congress so that Karl Mundt, the victor in the November election,

might gain seniority by filling out the final days of Bushfield's term.

The Senate was the first and only official public service for Vera Bushfield who served as South Dakota's first lady when her husband was governor from 1939 to 1943. She was

born in Miller, South Dakota, on August 9, 1889, and graduated from the Stout Institute in Menominee, Wisconsin, in 1912. She also attended Dakota Wesleyan University and the University of Minnesota. She died in Fort Collins, Colorado, on April 16, 1976.

## EVA KELLY BOWRING



(U.S. House of Representatives)

*United States Senator  
Republican of Nebraska  
Eighty-third Congress  
April 16, 1954–November 7, 1954*

Eva Bowring served for eight years as vice chair of the Nebraska Republican Central Committee and director of women's activities for the Nebraska Republican Party before serving in the United States Senate. Governor Robert B. Crosby appointed Bowring on April 16, 1954, to fill the vacancy caused by the death of Senator Dwight Griswold. She was

sworn in on April 26 for the term that would end, according to Nebraska law, at the next general election when a candidate would be selected to finish out the final two months of Griswold's term.

Bowring served on the Committee on Interstate and Foreign Commerce, the Committee on Labor and Public Welfare, and the Com-

mittee on Post Office and Civil Service. In her first speech on the Senate floor, she declared her support for a program of flexible agricultural price supports proposed by the Eisenhower administration. She and Nebraska's other senator, Hugh A. Butler, introduced a bill for the construction of the Red Willow Dam and Reservoir as part of the Missouri River Basin project. Bowring also sponsored legislation providing for flood control works in the Gering Valley of Nebraska.

The needs of Nebraska's agricultural constituents were familiar to Bowring who continued to work the 10,000 acre cattle ranch that she and her late husband developed. She was born in Nevada, Missouri, on January 9, 1892. Her first husband died in 1924, and after remarrying in 1928 she moved to Arthur

Bowring's ranch near Merriman in the Sandhill country of Nebraska. In addition to her ranch work, she became involved in local Republican politics and in the Nebraska Stockgrowers Association.

In June 1954 Bowring announced that she would not seek election to the short term to follow the November general election. She was succeeded by another woman and a Republican, Hazel Abel. After retirement from the Senate, Bowring served on the national advisory council of the National Institutes of Health from 1954 to 1958 and in 1960 and 1961. She was on the board of parole of the Department of Justice from 1956 to 1964. Bowring died in Gordon, Nebraska, on January 8, 1985.

## HAZEL HEMPEL ABEL



(U.S. House of Representatives)

*United States Senator  
Republican of Nebraska  
Eighty-third Congress*

*November 8, 1954-December 31, 1954*

Hazel Abel was elected to the Senate to fill a two-month term left vacant by a technicality in Nebraska's election law. Eva Bowring, who was appointed to fill the vacancy in the Third District left by the death of Dwight Griswold, was barred by law from serving past the date of the first general election following her appointment. A special election open only to candidates not seeking the six-year term in the Senate, was held in Novem-

ber 1954. Abel, an active member of the Nebraska State Republican Party and recently-selected vice chair of the State Republican Central Committee, entered a primary crowded with fifteen other Republicans and three Democrats. She won the August primary and defeated her Democratic opponent in November. She served until December 31, 1954, when she resigned in order to give Senator-elect Carl Curtis an edge in seniority.

Abel was born Hazel Pearl Hempel in Plattsmouth, Nebraska, on July 10, 1888. She attended school in Omaha and graduated from the University of Nebraska in 1908 with a B.A. and a teacher's certificate. She taught school prior to her marriage to George Abel in 1916. Hazel Abel worked for her husband's construction firm for twenty years, and following his death in 1936 she served as company president until 1951.

During her short tenure in the Senate, Abel was appointed to the Committee on Finance

and the Committee on Interstate and Foreign Commerce where she was a strong supporter of President Eisenhower. Early in her term she joined the majority in voting to censure Senator Joseph McCarthy.

Abel remained active in Republican state politics, serving as chair of the state delegation at the national convention in 1956. In 1960 she came in second place in the Republican primary for nomination as governor. Hazel Abel died in Lincoln, Nebraska, on July 30, 1966.

# ELAINE SCHWARTZENBURG EDWARDS



(U.S. House of Representatives)

*United States Senator  
Democrat of Louisiana  
Ninety-second Congress  
August 1, 1972–November 13, 1972*

Elaine Edwards was appointed to the Senate on August 1, 1972, by her husband, Louisiana Governor Edwin Edwards, to fill the vacancy created by the death of Allen J. Ellender. Governor Edwards' controversial decision to appoint his wife, who made clear her decision not to run for the full Senate term, allowed him to avoid the endorsement of a

successor to Ellender, a thirty-five year veteran of the Senate. Elaine Edwards took the oath of office on August 7, 1972, and served on the Committee on Agriculture and Forestry and the Committee on Public Works.

One of Edwards' earliest legislative actions was to join Senator Hubert Humphrey in introducing a bill to establish an educational

fellowship in the name of her predecessor. She also co-sponsored an amendment to the Federal Environmental Pesticide Control Act and another to increase the permissible amount of outside income for Social Security recipients. In her first floor speech, Edwards voiced support for a motion calling for a vote on the proposed Equal Education Opportunities Act which would have restricted the use

of busing to achieve school integration. Edwards resigned her seat on November 13, 1972, in order that Senator-elect J. Bennett Johnston might gain seniority by finishing the remainder of Ellender's term.

Edwards was born Elaine Lucille Schwartzenburg in Marksville, Louisiana, on March 8, 1929, and she attended local schools.

## MURIEL BUCK HUMPHREY



U.S. Senate Historical Office

*United States Senator  
Democrat of Minnesota  
Ninety-fifth Congress  
January 25, 1978–November 7, 1978*

For nine months, Muriel Humphrey carried out the work of her late husband, Hubert Humphrey, in the United States Senate. Minnesota Governor Rudy Perpich appointed Muriel Humphrey on January 25, 1978, to serve in her husband's Senate seat until a special election could be held to fill the remainder of his term. She took the oath of

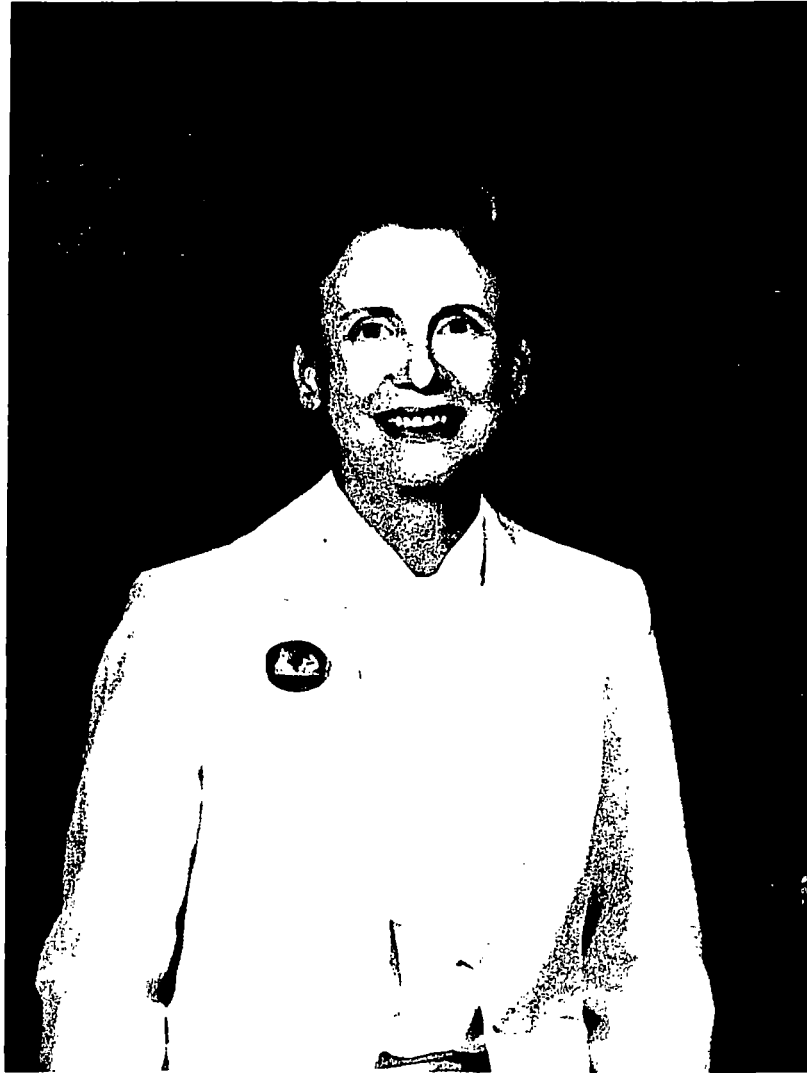
office on February 6. Although she declined to run for the special election, she used her brief tenure in Congress to speak out on a number of substantive issues. In her first speech as a senator, she urged ratification of the treaties turning over control of the Panama Canal to Panama and guaranteeing the canal's neutrality.

Humphrey served on the Committee on Foreign Relations and the Committee on Governmental Operations. On the Foreign Relations panel she voted in favor of President Carter's proposal to sell jet fighter planes to Egypt, Israel and Saudi Arabia. She was the sponsor of a successful amendment to the Civil Service Reform Act of 1978 which offered better job security to federal employees who exposed fraud or waste. She was a cosponsor of the joint resolution extending the deadline for ratification of the Equal Rights Amendment. In September of 1978, the Senate approved

her amendment to the Department of Education Organization Act that changed the name of the Department of Health, Education and Welfare to the Department of Health and Human Services.

Muriel Fay Buck was born in Huron, South Dakota, on February 20, 1912, and attended Huron College. She resigned from the Senate on November 7, 1978, following the election of David Durenberger to serve the remainder of Hubert Humphrey's term. Since her retirement, she has remarried and lives in Excelsior, Minnesota, as Muriel Humphrey Brown.

# MARYON PITTMAN ALLEN



(U.S. Senate Historical Office)

*United States Senator  
Democrat of Alabama  
Ninety-fifth Congress*

*June 8, 1978–November 7, 1978*

Maryon Allen's brief Senate term was filled with controversy arising from her outspoken statements to the press and her attempt to win election to the remainder of her husband's term. She was born Maryon Pittman in Meridian, Mississippi, on November 30, 1925, and moved with her family to Birmingham, Alabama, the following year. After attending public schools and the University of

Alabama, she worked as a journalist, editor, and lecturer.

As a reporter for the *Birmingham News*, Pittman interviewed Alabama's Lieutenant Governor James B. Allen in April 1964 following his speech before the Alabama Federation of Women's Clubs. They were married in August. Following her husband's election to the United States Senate in 1968, she wrote a

Washington-based column, entitled "The Reflections of a News Hen," syndicated in newspapers throughout Alabama. She was preparing a series of televised news commentaries at the time of her husband's death on June 1, 1978.

Governor George Wallace, for whom James Allen served as lieutenant governor in the 1960s, on June 8 appointed Maryon Allen to fill her husband's seat for an interim term until an election was held on November 7. Allen announced that she would also be a candidate for the remaining two years of her husband's term. Although Wallace, who was ineligible for reelection as governor, was expected to run for the Senate, he ruled himself out later in June.

Whatever support Wallace may have contributed to Allen's campaign evaporated in the wake of a Washington Post interview in which Allen was quoted as being highly critical of the governor and his wife. Allen later claimed the interview had distorted her comments, but the reaction in Alabama damaged her chances for election. Confident of victory, she concentrated on her Senate duties and campaigned little before the Democratic primary of September 5. She led the primary voting with 44 percent but was forced into a runoff with state senator Donald Stewart who defeated her by more than 120,000 votes in the runoff of September 26.

Allen later worked as a columnist for the *Washington Post* and is a public relations and advertising director for an antiques and decorating firm in Birmingham.

## NANCY LANDON KASSEBAUM



(Office of Senator Kassebaum)

*United States Senator  
Republican of Kansas  
January 3, 1979-present*

In 1978, Nancy Landon Kassebaum joined a crowded field in the Republican primary for nomination as U.S. senator from Kansas. As the daughter of Alfred Landon, the Republican presidential candidate of 1936, she was a member of one of the state's best-known Republican families, but she had little experience in public life, having served but two years on the school board of Maize, Kansas. Kassebaum, however, proved an effective and

popular candidate and swept both the primary and the general election. She encountered no serious opposition in her reelection campaign in 1984.

Kassebaum was born Nancy Landon in Topeka, Kansas, on July 29, 1932. She graduated from the University of Kansas in 1954 with a B.A. and went on to earn her masters degree in history from the University of

Michigan in 1956. After raising a family she worked briefly as an assistant for Sen. James Pearson and helped manage a radio station in Wichita. From 1973 to 1975 she served on the local school board.

Since entering the Senate during the Ninety-sixth Congress in 1979, Kassebaum has served on the Committee on Banking, Housing, and Urban Affairs in the Ninety-sixth and One Hundred First Congresses, the Committee on the Budget in the Ninety-sixth through One Hundredth Congresses, the Committee on Foreign Relations from the Ninety-seventh through One Hundred First Congresses, the Committee on Commerce, Science and Transportation in the Ninety-sixth through One Hundredth Congresses, the Committee on Labor and Human Resources beginning in the

One Hundred First Congress, the Select Committee on Aging in the Ninety-sixth through Ninety-eighth and One Hundred First Congresses, and the Select Committee on Ethics in the Ninety-ninth and One Hundredth Congresses.

While serving as chair of the Foreign Relations Subcommittee on African Affairs in the Ninety-seventh through Ninety-ninth Congresses, Kassebaum supported limited U.S. sanctions against South Africa. She also worked to restrict the type of assistance given the Contras in Nicaragua. Kassebaum has supported arms control negotiations and as a member of the Budget Committee in 1984 and 1987 worked to enact a bipartisan deficit reduction plan.

# PAULA FICKES HAWKINS



(U.S. Senate Historical Office)

*United States Senator*

*Republican of Florida*

*January 1, 1981–January 3, 1987*

In a familiar path for women in politics, Paula Hawkins first entered public affairs as a community activist and volunteer for the local political party organization. From her work with parents' organizations and as the leader of a neighborhood effort to improve public utilities, Hawkins won statewide election to the Florida Public Service Commission and from there mounted campaigns for congressional office. At the same time she served

in various capacities with the local Republican Party and developed ties with Republican leaders from throughout the state.

Hawkins was born Paula Fickes in Salt Lake City, Utah, on January 24, 1927, and as a young girl lived in various places as the daughter of a navy chief warrant officer. She attended schools in Atlanta and graduated from high school in Logan, Utah. She attend-

ed Utah State University for several years and enrolled in secretarial courses before getting her first job as a secretary at Utah State. Following her marriage she moved to Atlanta and in 1955 to central Florida.

In the 1960s Hawkins won a succession of positions with the Republican Party that carried her into the world of state politics. After organizing Edward Gurney's successful House campaign in 1966 and serving as a Florida co-chair of Nixon's presidential campaigns in 1968 and 1972, Hawkins won her first elective office in 1972 when she gained a seat on the state Public Services Commission. In her two terms with that body she earned a reputation as a consumer-rights advocate and opponent of rate increases by utility companies. Hawkins resigned from the commission in 1979 to become vice president for consumer affairs for Air Florida.

While serving on the Public Services Commission, Hawkins sought election as United States senator in 1974 and as lieutenant governor in 1976. In 1980 she again entered the campaign for the Senate in a crowded Republican primary with few divisive issues. After failing to win a majority, Hawkins gained the nomination in a runoff and faced former Representative William Gunter in the general election. She narrowly won the seat in an election year when Ronald Reagan swept Florida in the presidential contest and Republicans gained control of the Senate.

Hawkins served on the Committee on Agriculture, Nutrition, and Forestry and the Com-

mittee on Labor and Human Resources throughout her Senate term and in the Ninety-eighth Congress also served on the Committee on Banking, Housing, and Urban Affairs and the Committee on Foreign Relations. She was a member of the Joint Economic Committee in the Ninety-seventh Congress and the Special Committee on Aging in the Ninety-ninth Congress.

In her second year in the Senate, Hawkins focused on an issue that became the centerpiece of her legislative attention for the remainder of her term. She initiated a year-long investigation of the problem of missing children, one result of which was the Missing Children's Act of 1982 which provided for a central information center for missing children. Hawkins sponsored other legislation to facilitate the search for children and to provide federal guidelines for the prevention of abuse in child-care centers and institutions. Hawkins gained attention for the issue with a dramatic revelation of her own abuse as a child.

Hawkins was generally supportive of the Reagan administration in foreign policy and economic matters. She opposed funding for abortion and the Equal Rights Amendment. She favored increased federal spending in various programs dealing with the elderly.

In 1986, when Democrats regained a majority in the Senate, Hawkins was unable to hold her seat against the challenge from Florida governor Bob Graham. She is a resident of Winter Park, Florida.

## BARBARA ANN MIKULSKI



(Office of Senator Mikulski)

*Democrat of Maryland*  
*United States Representative*  
*Ninety-fifth-Ninety-ninth Congress*  
*January 3, 1977-January 3, 1987*  
*United States Senator*  
*January 3, 1987-present*

Since she first became involved in a citizen's lobbying effort in the 1960s, Barbara Mikulski has advanced steadily through the world of Baltimore politics and Capitol Hill. She emerged as a leader of the popular movement to halt construction of a proposed high-

way through several established Baltimore neighborhoods. Following the success of the anti-highway movement, Mikulski was elected to a seat on Baltimore's City Council in 1971 and served with that body for five years.

In her first attempt at congressional office, she accepted the Democratic nomination to challenge Senator Charles Mathias in 1974. Mikulski failed to unseat the popular incumbent, but she was well-positioned in 1976 to seek the Third District House seat of Paul Sarbanes who declined renomination in order to mount his successful Senate campaign. Mikulski won a crowded primary and went on to her first of five easy victories in the heavily-Democratic district.

Mikulski arrived in the House with a thorough understanding of her native Baltimore where she was born July 20, 1936. She attended local parochial schools and graduated with a B.A. from Mount St. Agnes College in 1958. In 1965 she received a masters of social work from the University of Maryland School of Social Work. Before entering politics, she worked with Catholic charities and the Baltimore Welfare Department.

During her House career, Mikulski served as a member of the Committee on Merchant Marine and Fisheries in the Ninety-fifth through Ninety-ninth Congresses, the Committee on Interstate and Foreign Commerce in the Ninety-fifth and Ninety-sixth Congress-

es and its successor, the Committee on Energy and Commerce, in the two following Congresses. Mikulski pursued in the House the same sort of issues that attracted her to public affairs in Baltimore. She proposed or supported legislation dealing with child care, women's rights, national health insurance and consumer protection.

When Charles Mathias announced his retirement from the Senate, Mikulski decided to risk her safe seat in the House and vie for the Senate seat that eluded her in 1974. In the Democratic primary of 1986 she faced her House colleague Michael Barnes and Maryland's governor Harry Hughes. Working from a well-established political base in Baltimore, Mikulski won 50 percent of the primary vote and easily defeated Republican Linda Chavez in the general election.

As a senator, Mikulski sits on the Appropriations Committee, the Labor and Human Resources Committee, and the Small Business Committee. These assignments and her chairmanship of the Appropriations Subcommittee on VA, HUD and Independent Agencies allow her to continue her legislative work on social issues.

Ref.  
2100  
1993

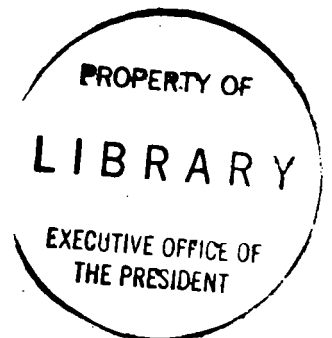
# Who's Who in Congress 1993

---

103rd Congress



Congressional Quarterly Inc.  
Washington, D.C.





**David L. Boren (D-Okla.)**  
Of Seminole • Elected 1978

**Born:** Apr. 21, 1941, Washington, D.C.  
**Education:** Yale U., B.A. 1963; U. of Oxford, M.A. 1965; U. of Oklahoma, J.D. 1968.  
**Military Career:** National Guard, 1968-75.  
**Occupation:** Lawyer.  
**Family:** Wife, Molly Wanda Shi; two children.  
**Religion:** Methodist.  
**Political Career:** Okla. House, 1967-75; governor, 1975-79.

**CQ Voting Studies**

	1991	1992
Presidential	60%	33%
Party	65%	58%
Participation	99%	90%

**Interest Groups**

	1990	1991
ADA	56%	45%
ACU	23%	45%
AFL-CIO	63%	42%
CCUS	55%	56%

**Elections**

	1984	1990
General	76%	83%
Primary	90%	84%

**Capitol Office:** 453 Russell Senate Office Building 20510; 224-4721.  
**Office Staff:** Admin. Asst., David Cox; Legis. Dir., Joe Harroz; Press Secy., Dan Webber; Exec. Asst., Beth Byrd.  
**Committees:** Joint Organization of Congress — Chairman; Joint Taxation; Agriculture, Nutrition & Forestry; Finance.

**Oklahoma** — The statewide vote for Bill Clinton was 34% in 1992.



**Barbara Boxer (D-Calif.)**  
Of Greenbrae • Elected 1992

**Born:** Nov. 11, 1940, Brooklyn, N.Y.  
**Education:** Brooklyn College, B.A. 1962.  
**Occupation:** Congressional aide; journalist; stockbroker.  
**Family:** Husband, Stewart Boxer; two children.  
**Religion:** Jewish.  
**Political Career:** Marin County Board of Supervisors, 1977-83; U.S. House, 1983-93; candidate for Marin County Board of Supervisors, 1972.

**Elections**

	1992
General	48%
Primary	44%

**Capitol Office:** 112 Hart Senate Office Building 20510; 224-3553.  
**Office Staff:** Admin. Asst., Karen Olick; Policy Dir., Drew Littman; Press Secy., Linda Marston; Exec. Asst., Rosanne Marini.  
**Committees:** Banking, Housing & Urban Affairs; Budget; Environment & Public Works.

**California** — The statewide vote for Bill Clinton was 47% in 1992.

**Bill Bradley (D-N.J.)**  
Of Denver • Elected 1978

**Born:** July 28, 1943, Crystal City, Mo.  
**Education:** Princeton U., B.A. 1965; U. of Oxford, M.A. 1968.  
**Military Career:** Air Force Reserve, 1967-78.  
**Occupation:** Professional basketball player; author.  
**Family:** Wife, Ernestine Schlant; one child.  
**Religion:** Protestant.  
**Political Career:** No previous office.

**Capitol Office:** 731 Hart Senate Office Building 20510; 224-3224.  
**Office Staff:** Chief of Staff, Peter S. Stamos; Legis. Dir., Kenneth S. Apfel; Communications Dir., Eric Hauser; Scheduler, Anne Noble.  
**Committees:** Special Aging; Energy & Natural Resources; Finance.

**New Jersey** — The statewide vote for Bill Clinton was 43% in 1992.



**CQ Voting Studies**

	1991	1992
Presidential	32%	23%
Party	84%	80%
Participation	95%	91%

**Interest Groups**

	1990	1991
ADA	94%	90%
ACU	13%	10%
AFL-CIO	67%	75%
CCUS	8%	10%

**Elections**

	1984	1990
General	64%	50%
Primary	93%	92%

**John B. Breaux (D-La.)**  
Of Crowley • Elected 1986  
Pronunciation: BRO

**Born:** Mar. 1, 1944, Crowley, La.  
**Education:** U. of Southwestern Louisiana, B.A. 1964; Louisiana State U., J.D. 1967.  
**Occupation:** Lawyer.  
**Family:** Wife, Lois Daigle; four children.  
**Religion:** Roman Catholic.  
**Political Career:** U.S. House, 1972-87.

**Capitol Office:** 516 Hart Senate Office Building 20510; 224-4623.  
**Office Staff:** Chief of Staff, Wallace J. Henderson; Legis. Dir., Marcia Jones; Press Secy., Bob Mann; Exec. Asst., Norma Jane Sabiston.  
**Committees:** Special Aging; Commerce, Science & Transportation; Finance.

**Louisiana** — The statewide vote for Bill Clinton was 46% in 1992.



**CQ Voting Studies**

	1991	1992
Presidential	65%	42%
Party	59%	68%
Participation	95%	97%

**Interest Groups**

	1990	1991
ADA	33%	30%
ACU	39%	57%
AFL-CIO	78%	67%
CCUS	33%	40%

**Elections**

	1986	1992
General	53%	73%
Primary	37%	73%



**Russell D. Feingold** (D-Wis.)  
*Of Middleton • Elected 1992*  
 Pronunciation: FINE-gold

**Born:** Mar. 2, 1953, Janesville, Wis.  
**Education:** U. of Wisconsin, B.A. 1975; U. of Oxford, B.A. 1977; Harvard U., J.D. 1979.  
**Occupation:** Lawyer.  
**Family:** Wife, Mary; two children, two stepchildren.  
**Religion:** Jewish.  
**Political Career:** Wis. Senate, 1983-93.

Elections	
	1992
General	53%
Primary	70%

**Capitol Office:** B40 Room 1 Dirksen Senate Office Building 20510; 224-5323.  
**Office Staff:** Admin. Dir., Ruth LaRocque; Legis. Dir., Susanne Martinez; Press Secy., Bob Decheine; Scheduler, Mary Murphy.  
**Committees:** Special Aging; Agriculture, Nutrition & Forestry; Foreign Relations.

**Wisconsin** — The statewide vote for Bill Clinton was 41% in 1992.



**Dianne Feinstein** (D-Calif.)  
*Of San Francisco • Elected 1992*  
 Pronunciation: FINE-stine

**Born:** June 22, 1933, San Francisco, Calif.  
**Education:** Stanford U., B.A. 1955.  
**Occupation:** Public official.  
**Family:** Husband, Richard Blum; one child; three stepchildren.  
**Religion:** Jewish.  
**Political Career:** San Francisco Board of Supervisors, 1971-78; mayor of San Francisco, 1978-89; Democratic nominee for governor, 1990.

Elections	
	1992
General	54%
Primary	58%

**Capitol Office:** 331 Hart Senate Office Building 20510; 224-3841.  
**Office Staff:** Admin. Asst., John Haber; Legis. Dir., Barbara Larkin; Press Secy., Bill Chandler; Scheduler, Stacey Friedman.  
**Committees:** Appropriations; Judiciary; Rules & Administration.

**California** — The statewide vote for Bill Clinton was 47% in 1992.

**Wendell H. Ford** (D-Ky.)  
*Of Owensboro • Elected 1974*

**Born:** Sept. 8, 1924, Daviess County, Ky.  
**Education:** U. of Kentucky, 1942-43.  
**Military Career:** Army, 1944-46; Army National Guard, 1949-62.  
**Occupation:** Insurance executive.  
**Family:** Wife, Jean Neel; two children.  
**Religion:** Baptist.  
**Political Career:** Ky. Senate, 1965-67; lieutenant governor, 1967-71; governor, 1971-74.

**Capitol Office:** 173A Russell Senate Office Building 20510; 224-4343.  
**Office Staff:** Admin. Asst., James T. Fleming; Press Secy., Mark Day; Appts. Secy., Sherry McCabe.  
**Committees:** Joint Inaugural Ceremonies — Chairman; Joint Organization of Congress; Joint Printing — Chairman; Commerce, Science & Transportation; Energy & Natural Resources; Rules & Administration — Chairman.

**Kentucky** — The statewide vote for Bill Clinton was 45% in 1992.



CQ Voting Studies		
	1991	1992
Presidential	57%	35%
Party	67%	70%
Participation	99%	99%

Interest Groups		
	1990	1991
ADA	39%	50%
ACU	35%	47%
AFL-CIO	89%	75%
CCUS	33%	10%

Elections		
	1986	1992
General	74%	63%
Primary	u/o	u/o

**John Glenn** (D-Ohio)  
*Of Columbus • Elected 1974*

**Born:** July 18, 1921, Cambridge, Ohio.  
**Education:** Muskingum College, B.S. 1962.  
**Military Career:** Marine Corps, 1942-65.  
**Occupation:** Astronaut; soft drink company executive.  
**Family:** Wife, Anna Margaret Castor; two children.  
**Religion:** Presbyterian.  
**Political Career:** Sought Democratic nomination for U.S. Senate, 1970; sought Democratic nomination for president, 1984.

**Capitol Office:** 503 Hart Senate Office Building 20510; 224-3353.  
**Office Staff:** Admin. Asst., Mary Jane Veno; Legis. Dir., Ronald J. Grimes; Press Secy., Bryan McCleary; Scheduler, Kathleen Long.  
**Committees:** Special Aging; Armed Services; Governmental Affairs — Chairman; Select Intelligence.

**Ohio** — The statewide vote for Bill Clinton was 40% in 1992.



CQ Voting Studies		
	1991	1992
Presidential	41%	30%
Party	83%	83%
Participation	97%	99%

Interest Groups		
	1990	1991
ADA	89%	90%
ACU	9%	10%
AFL-CIO	67%	75%
CCUS	25%	0%

Elections		
	1986	1992
General	62%	51%
Primary	88%	u/o



**James M. Jeffords (R-Vt.)**  
*Of Shrewsbury • Elected 1988*

**Born:** May 11, 1934, Rutland, Vt.  
**Education:** Yale U., B.S.I.A. 1956; Harvard U., LL.B. 1962.  
**Military Career:** Navy, 1956-59; Naval Reserve, 1959-present.  
**Occupation:** Lawyer.  
**Family:** Wife, Elizabeth Daley; two children.  
**Religion:** Congregationalist.  
**Political Career:** Vt. Senate, 1967-69; Vt. attorney general, 1969-73; U.S. House, 1975-89; sought Republican nomination for governor, 1972.

**Capitol Office:** 530 Dirksen Senate Office Building 20510; 224-5141.  
**Office Staff:** Admin. Asst., Susan Boardman Russ; Legis. Dir., Mark E. Powden; Press Secy., Erik Smulson; Scheduler, Trecia Bickford.  
**Committees:** Special Aging; Foreign Relations; Labor & Human Resources; Veterans' Affairs.

**Vermont** — The statewide vote for Bill Clinton was 46% in 1992.

**CQ Voting Studies**

	1991	1992
Presidential	54%	45%
Party	36%	36%
Participation	94%	93%

**Interest Groups**

	1990	1991
ADA	72%	65%
ACU	26%	10%
AFL-CIO	44%	50%
CCUS	25%	22%

**Elections**

	1988
General	68%
Primary	61%



**Nancy Landon Kassebaum (R-Kan.)**  
*Of Burdick • Elected 1978*

**Born:** July 29, 1932, Topeka, Kan.  
**Education:** U. of Kansas, B.A. 1954; U. of Michigan, M.A. 1956.  
**Occupation:** Broadcasting executive.  
**Family:** Divorced; four children.  
**Religion:** Episcopalian.  
**Political Career:** Maize School Board, 1973-75.

**Capitol Office:** 302 Russell Senate Office Building 20510; 224-4774.  
**Office Staff:** Admin. Asst., Dave Bartel; Legis. Dir., Daniel P. Bolen; Press Secy., Mike Horak; Exec. Asst., Patricia Johnson.  
**Committees:** Joint Organization of Congress; Foreign Relations; Select Indian Affairs; Labor & Human Resources — Ranking Member.

**Kansas** — The statewide vote for Bill Clinton was 34% in 1992.

**CQ Voting Studies**

	1991	1992
Presidential	79%	72%
Party	69%	76%
Participation	98%	98%

**Interest Groups**

	1990	1991
ADA	44%	35%
ACU	64%	62%
AFL-CIO	22%	17%
CCUS	67%	80%

**Elections**

	1984	1990
General	76%	74%
Primary	u/o	87%



**J. Bennett Johnston (D-La.)**  
*Of Shreveport • Elected 1972*

**Born:** June 10, 1932, Shreveport, La.  
**Education:** Washington and Lee U., 1950-51; U.S. Military Academy, 1951-52; Washington and Lee U., 1952-53; Louisiana State U., LL.B. 1956.  
**Military Career:** Army, 1956-59.  
**Occupation:** Lawyer.  
**Family:** Wife, Mary Gunn; four children.  
**Religion:** Baptist.  
**Political Career:** La. House, 1964-68; La. Senate, 1968-72; sought Democratic nomination for governor, 1971.

**Capitol Office:** 136 Hart Senate Office Building 20510; 224-5824.  
**Office Staff:** Chief of Staff, John Lynn; Legis. Dir., Laura C. Hudson; Press Secy., Scott Trahan; Scheduler, Cheryl Kimball.  
**Committees:** Special Aging; Appropriations; Budget; Energy & Natural Resources — Chairman; Select Intelligence.

**Louisiana** — The statewide vote for Bill Clinton was 46% in 1992.

**CQ Voting Studies**

	1991	1992
Presidential	56%	52%
Party	65%	66%
Participation	99%	98%

**Interest Groups**

	1990	1991
ADA	39%	40%
ACU	38%	52%
AFL-CIO	86%	75%
CCUS	33%	40%

**Elections**

	1984	1990
General	u/o	u/o
Primary	86%	54%

**Dirk Kempthorne (R-Idaho)**  
*Of Boise • Elected 1992*

**Born:** Oct. 29, 1951, San Diego, Calif.  
**Education:** U. of Idaho, B.A. 1975.  
**Occupation:** Public affairs manager; securities representative; political consultant; building association executive.  
**Family:** Wife, Patricia; two children.  
**Religion:** Methodist.  
**Political Career:** Mayor of Boise, 1986-92.

**Capitol Office:** B40 Room 3 Dirksen Senate Office Building 20510; 224-6142.  
**Office Staff:** Chief of Staff, Phil Reberger; Legis. Dir., W. H. Fawcett; Press Secy., Mark Snider; Scheduler, Sally Uberuaga.  
**Committees:** Armed Services; Environment & Public Works; Small Business.

**Idaho** — The statewide vote for Bill Clinton was 29% in 1992.



**Elections**

	1992
General	57%
Primary	57%



**Barbara A. Mikulski (D-Md.)**  
*Of Baltimore • Elected 1986*

**Born:** July 20, 1936, Baltimore, Md.  
**Education:** Mount Saint Agnes College, B.A. 1958; U. of Maryland, M.S.W. 1965.  
**Occupation:** Social worker.  
**Family:** Single.  
**Religion:** Roman Catholic.  
**Political Career:** Baltimore City Council, 1971-77; Democratic nominee for U.S. Senate, 1974; U.S. House, 1977-87.

**CQ Voting Studies**

	1991	1992
Presidential	33%	23%
Party	91%	87%
Participation	99%	97%

**Interest Groups**

	1990	1991
ADA	94%	90%
ACU	5%	10%
AFL-CIO	75%	83%
CCUS	10%	20%

**Elections**

	1986	1992
General	61%	71%
Primary	50%	77%

**Capitol Office:** 320 Hart Senate Office Building 20510; 224-4654.  
**Office Staff:** Admin. Asst., Lynne Battaglia; Legis. Dir., Trudy Vincent; Press Secy., John Steele; Appts. Secy., Ann Norton.  
**Committees:** Appropriations; Select Ethics; Labor & Human Resources.

**Maryland** — The statewide vote for Bill Clinton was 50% in 1992.



**George J. Mitchell (D-Maine)**  
*Of Portland • Elected 1982*  
*Appointed to the Senate 1980*

**Born:** Aug. 20, 1933, Waterville, Maine.  
**Education:** Bowdoin College, B.A. 1954; Georgetown U., LL.B. 1960.  
**Military Career:** Army, 1954-56.  
**Occupation:** Lawyer; judge.  
**Family:** Divorced; one child.  
**Religion:** Roman Catholic.  
**Political Career:** Maine Democratic Party chairman, 1966-68; Democratic National Committee, 1969-77; assistant county attorney, 1971-77; U.S. attorney, 1977-79; U.S. District Court judge, 1979-80; Democratic nominee for governor, 1974.

**CQ Voting Studies**

	1991	1992
Presidential	35%	25%
Party	92%	93%
Participation	100%	100%

**Interest Groups**

	1990	1991
ADA	83%	90%
ACU	9%	5%
AFL-CIO	56%	83%
CCUS	17%	30%

**Elections**

	1982	1988
General	61%	81%
Primary	u/o	u/o

**Capitol Office:** 176 Russell Senate Office Building 20510; 224-5344.  
**Office Staff:** Admin. Asst., Mary McAleney; Press Secy., Diane Dewhirst; Exec. Asst., Pat Sarcone.  
**Committees:** Joint Inaugural Ceremonies; Joint Organization of Congress; Environment & Public Works; Finance; Veterans' Affairs.

**Maine** — The statewide vote for Bill Clinton was 39% in 1992.



**Carol Moseley-Braun (D-Ill.)**  
*Of Chicago • Elected 1992*

**Born:** Aug. 16, 1947, Chicago, Ill.  
**Education:** U. of Illinois, Chicago, B.A. 1967; U. of Chicago, J.D. 1972.  
**Occupation:** Lawyer.  
**Family:** Divorced; one child.  
**Religion:** Roman Catholic.  
**Political Career:** Ill. House, 1979-89; Cook County recorder of deeds, 1990-92.

**Elections**

	1992
General	53%
Primary	38%

**Capitol Office:** 708 Hart Senate Office Building 20510; 224-2854.

**Office Staff:** Chief of Staff, Michael Frazier; Legis. Dir., Bill Matthey; Press Secy., Stacey Grundman; Scheduler, Kaarin Anderson.  
**Committees:** Banking, Housing & Urban Affairs; Judiciary; Small Business.

**Illinois** — The statewide vote for Bill Clinton was 49% in 1992.

**Daniel Patrick Moynihan (D-N.Y.)**  
*Of Pindars Corners • Elected 1976*

**Born:** Mar. 16, 1927, Tulsa, Okla.  
**Education:** City College, N.Y., 1943; Tufts U., B.N.S. 1946; Tufts U., B.A. 1948; Fletcher School of Law and Diplomacy, M.A. 1949; Fletcher School of Law and Diplomacy, Ph.D. 1961.  
**Military Career:** Navy, 1944-47.  
**Occupation:** Professor of government; writer.  
**Family:** Wife, Elizabeth Brennan; three children.  
**Religion:** Roman Catholic.  
**Political Career:** Sought Democratic nomination for N.Y. City Council president, 1965.



**CQ Voting Studies**

	1991	1992
Presidential	35%	35%
Party	92%	90%
Participation	99%	100%

**Interest Groups**

	1990	1991
ADA	94%	95%
ACU	4%	0%
AFL-CIO	78%	92%
CCUS	17%	10%

**Elections**

	1982	1988
General	65%	67%
Primary	85%	u/o

**Capitol Office:** 464 Russell Senate Office Building 20510; 224-4451.

**Office Staff:** Admin. Asst., Richard Eaton; Legis. Dir., Andrew J. Samet; Press Secy., Brian Connolly; Personal Secy., Eleanor Suntum.  
**Committees:** Joint Library; Joint Taxation — Vice Chairman; Environment & Public Works; Finance — Chairman; Foreign Relations; Rules & Administration.

**New York** — The statewide vote for Bill Clinton was 50% in 1992.



**Frank H. Murkowski (R-Alaska)**  
Of Fairbanks • Elected 1980

**Born:** Mar. 28, 1933, Seattle, Wash.  
**Education:** Santa Clara U., 1951-53; Seattle U., B.A. 1955.  
**Military Career:** Coast Guard, 1955-56.  
**Occupation:** Banker.  
**Family:** Wife, Nancy Gore; six children.  
**Religion:** Roman Catholic.  
**Political Career:** Alaska commissioner of economic development, 1966-70; Republican nominee for U.S. House, 1970.

**CQ Voting Studies**

	1991	1992
Presidential	89%	72%
Party	88%	82%
Participation	99%	93%

**Interest Groups**

	1990	1991
ADA	11%	5%
ACU	76%	86%
AFL-CIO	44%	42%
CCUS	83%	60%

**Elections**

	1986	1992
General	54%	53%
Primary	u/o	81%

**Capitol Office:** 709 Hart Senate Office Building 20510; 224-6665.  
**Office Staff:** Admin. Asst., Gregg Renkes; Legis. Dir., David Gushe; Press Secy., Chuck Kleeschulte; Exec. Asst./Scheduler, Janet Klingler.  
**Committees:** Energy & Natural Resources; Foreign Relations; Select Indian Affairs; Veterans' Affairs — Ranking Member.

**Alaska** — The statewide vote for Bill Clinton was 32% in 1992.



**Patty Murray (D-Wash.)**  
Of Seattle • Elected 1992

**Born:** Oct. 11, 1950, Seattle, Wash.  
**Education:** Washington State U., B.A. 1972.  
**Occupation:** Educator.  
**Family:** Husband, Rob; two children.  
**Religion:** Roman Catholic.  
**Political Career:** Shoreline School Board, 1983-89; Wash. Senate, 1989-93; candidate for Shoreline School Board, 1982.

**Elections**

	1992
General	54%
Primary	28%

**Capitol Office:** B34 Dirksen Senate Office Building 20510; 224-2621.  
**Office Staff:** Admin. Asst., Michael Timmeny; Legis. Dir., Carole Grunberg; Press Secy., Patricia Akiyama; Scheduler, Margaret Ershler.  
**Committees:** Appropriations; Banking, Housing & Urban Affairs; Budget.

**Washington** — The statewide vote for Bill Clinton was 44% in 1992.

**Don Nickles (R-Okla.)**  
Of Ponca City • Elected 1980

**Born:** Dec. 6, 1948, Ponca City, Okla.  
**Education:** Oklahoma State U., B.B.A. 1971.  
**Military Career:** Army National Guard, 1970-76.  
**Occupation:** Machine company executive.  
**Family:** Wife, Linda Lou Morrison; four children.  
**Religion:** Roman Catholic.  
**Political Career:** Okla. Senate, 1979-81.



**Capitol Office:** 713 Hart Senate Office Building 20510; 224-5754.

**Office Staff:** Admin. Asst., Les Brorsen; Legis. Dir., Bret Bernhardt; Communications Dir., Ernie Schultz; Scheduler, Janel Goode.

**Committees:** Appropriations; Budget; Energy & Natural Resources; Select Indian Affairs.

**Oklahoma** — The statewide vote for Bill Clinton was 34% in 1992.

**CQ Voting Studies**

	1991	1992
Presidential	89%	77%
Party	88%	90%
Participation	97%	97%

**Interest Groups**

	1990	1991
ADA	0%	0%
ACU	96%	95%
AFL-CIO	11%	25%
CCUS	100%	100%

**Elections**

	1986	1992
General	55%	59%
Primary	u/o	u/o

**Sam Nunn (D-Ga.)**  
Of Perry • Elected 1972

**Born:** Sept. 8, 1938, Perry, Ga.  
**Education:** Emory U., A.B. 1960; Emory U., LL.B. 1962.  
**Military Career:** Coast Guard, 1959-60; Coast Guard Reserve, 1960-66.  
**Occupation:** Farmer; lawyer.  
**Family:** Wife, Colleen Ann O'Brien; two children.  
**Religion:** Methodist.  
**Political Career:** Ga. House, 1969-72.



**Capitol Office:** 303 Dirksen Senate Office Building 20510; 224-3521.

**Office Staff:** Admin. Asst., Bob Hurt; Legis. Dir., Rocky Rief; Press Secy., Scott Williams; Office Admin./Personal Secy., Rose Johnson.

**Committees:** Armed Services — Chairman; Governmental Affairs; Small Business.

**Georgia** — The statewide vote for Bill Clinton was 43% in 1992.

**CQ Voting Studies**

	1991	1992
Presidential	57%	40%
Party	69%	67%
Participation	98%	98%

**Interest Groups**

	1990	1991
ADA	50%	50%
ACU	32%	48%
AFL-CIO	56%	58%
CCUS	42%	40%

**Elections**

	1984	1990
General	80%	u/o
Primary	90%	u/o

100-10841  
100-10841  
100-10841  
100-10841

---

Congressional Quarterly's

# *Guide to Congress*

*Fourth Edition*



Washington, D.C.

---

Barbara Boxer (D-Calif) Elected 1992  
Dionne Feinstein (D-Calif) Elected 1992  
Carol Moseley Braun (D-ILL) Elected 1992  
Patty Murray (D-Wash.) Elected 1992

(20)

Kum: I came up  
with 20. See  
supporting documents.  
One only served  
for one day but  
she is still counted.

Kathleen Graf  
x 7000

11-4-93

# Women Who Have Served in Congress

As of October 1991, a total of 132 women had been elected or appointed to Congress. Of the 129 women who actually served in Congress (two others were never sworn in and another resigned her seat the day after she was sworn in), 115 served in the House only, twelve in the Senate, and two—Margaret Chase Smith, R-Maine, and Barbara Mi-

kulski, D-Md.—in both chambers.

Following is a list of the women members, their parties and states, and the years in which they served. In addition, Mary E. Farrington, R-Hawaii (1954-57), and Eleanor Holmes Norton, D-D.C. (1991- ), served as nonvoting delegates.

## Senate

Rebecca L. Felton (D-Ga.) <sup>1</sup>	1922
Hattie W. Caraway (D-Ark.)	1931-45
Rose McConnell Long (D-La.)	1936-37
Dixie Bibb Graves (D-Ala.)	1937-38
Gladys Pyle (R-S.D.) <sup>2</sup>	1938-39
Vera C. Bushfield (R-S.D.)	1948
Margaret Chase Smith (R-Maine)	1949-73
Hazel H. Abel (R-Neb.)	1954
Eva K. Bowring (R-Neb.)	1954
Maurine B. Neuberger (D-Ore.)	1960-67
Elaine S. Edwards (D-La.)	1972
Maryon Pittman Allen (D-Ala.)	1978
Muriel Buck Humphrey (D-Minn.)	1978
Nancy Landon Kassebaum (R-Kan.)	1978-
Paula Hawkins (R-Fla.)	1981-87
Barbara Mikulski (D-Md.)	1987-

## House

Jeannette Rankin (R-Mont.)	1917-19;
	1941-43
Alice M. Robertson (R-Okla.)	1921-23
Winnifred S. M. Huck (R-Ill.)	1922-23
Mae E. Nolan (R-Calif.)	1923-25
Florence P. Kahn (R-Calif.)	1925-37
Mary T. Norton (D-N.J.)	1925-51
Edith N. Rogers (R-Mass.)	1925-60
Katherine G. Langley (R-Ky.)	1927-31
Ruth H. McCormick (R-Ill.)	1929-31
Pearl P. Oldfield (D-Ark.)	1929-31
Ruth B. Owen (D-Fla.)	1929-33
Ruth S. B. Pratt (R-N.Y.)	1929-33
Effiegene Wingo (D-Ark.)	1930-33
Willa M. B. Eslick (D-Tenn.)	1932-33
Marian W. Clarke (R-N.Y.)	1933-35
Virginia E. Jenckes (D-Ind.)	1933-39
Kathryn O'Loughlin McCarthy (D-Kan.)	1933-35
Isabella S. Greenway (D-Ariz.)	1933-37
Caroline L. G. O'Day (D-N.Y.)	1935-43
Nan W. Honeyman (D-Ore.)	1937-39
Elizabeth H. Gasque (D-S.C.) <sup>2</sup>	1938-39
Clara G. McMillan (D-S.C.)	1939-41
Jessie Sumner (R-Ill.)	1939-47
Frances P. Bolton (R-Ohio)	1940-69
Florence R. Gibbs (D-Ga.)	1940-41
Margaret Chase Smith (R-Maine)	1940-49
Katherine E. Byron (D-Md.)	1941-43
Veronica G. Boland (D-Pa.)	1942-43
Clare Boothe Luce (R-Conn.)	1943-47
Winifred C. Stanley (R-N.Y.)	1943-45
Willa L. Fulmer (D-S.C.)	1944-45
Emily T. Douglas (D-Ill.)	1945-47

Helen G. Douglas (D-Calif.)	1945-51
Chase G. Woodhouse (D-Conn.)	1945-47;
	1949-51
Helen D. Mankin (D-Ga.)	1946-47
Eliza J. Pratt (D-N.C.)	1946-47
Georgia L. Lusk (D-N.M.)	1947-49
Katherine P. C. St. George (R-N.Y.)	1947-65
Reva Z. B. Bosone (D-Utah)	1949-53
Cecil M. Harden (R-Ind.)	1949-59
Edna F. Kelly (D-N.Y.)	1949-69
Vera D. Buchanan (D-Pa.)	1951-55
Marguerite S. Church (R-Ill.)	1951-63
Maude E. Kee (D-W.Va.)	1951-65
Ruth Thompson (R-Mich.)	1951-57
Gracie B. Pfost (D-Idaho)	1953-63
Leonor K. Sullivan (D-Mo.)	1953-77
Iris F. Blitch (D-Ga.)	1955-63
Edith Green (D-Ore.)	1955-75
Martha W. Griffiths (D-Mich.)	1955-74
Coya G. Knutson (DFL-Minn.)	1955-59
Kathryn E. Granahan (D-Pa.)	1956-63
Florence P. Dwyer (R-N.J.)	1957-73
Catherine D. May (R-Wash.)	1959-71
Edna O. Simpson (R-Ill.)	1959-61
Jessica McC. Weis (R-N.Y.)	1959-63
Julia B. Hansen (D-Wash.)	1960-74
Catherine D. Norrell (D-Ark.)	1961-63
Louise G. Reece (R-Tenn.)	1961-63
Corinne B. Riley (D-S.C.)	1962-63
Charlotte T. Reid (R-Ill.)	1963-71
Irene B. Baker (R-Tenn.)	1964-65
Patsy T. Mink (D-Hawaii)	1965-77;
	1990-
Lera M. Thomas (D-Texas)	1966-67
Margaret M. Heckler (R-Mass.)	1967-83
Shirley Chisholm (D-N.Y.)	1969-83
Bella S. Abzug (D-N.Y.)	1971-77
Ella T. Grasso (D-Conn.)	1971-75
Louise Day Hicks (D-Mass.)	1971-73
Elizabeth B. Andrews (D-Ala.)	1972-73
Yvonne B. Burke (D-Calif.)	1973-79
Marjorie S. Holt (R-Md.)	1973-87
Elizabeth Holtzman (D-N.Y.)	1973-81
Barbara C. Jordan (D-Texas)	1973-79
Patricia Schroeder (D-Colo.)	1973-
Corinne C. Boggs (D La.)	1973-91
Cardiss R. Collins (D-Ill.)	1973-
Marilyn Lloyd (D-Tenn.)	1975-
Millicent Fenwick (R-N.J.)	1975-83
Martha E. Keys (D-Kan.)	1975-79
Helen S. Meyner (D N.J.)	1975-79
Virginia Smith (R-Neb.)	1975-91
Gladys Noon Spellman (D-Md.)	1975-81
Shirley N. Pettis (R-Calif.)	1975-79

## 108-A Appendix

Barbara A. Mikulski (D-Md.)	1977-87	Helen Delich Bentley (R-Md.)	1985-
Mary Rose Oakar (D-Ohio)	1977-	Jan Meyers (R-Kan.)	1985-
Beverly Byron (D-Md.)	1979-	Cathy Long (D-La.)	1985-87
Geraldine Ferraro (D-N.Y.)	1979-85	Constance A. Morella (R-Md.)	1987-
Olympia J. Snowe (R-Maine)	1979-	Elizabeth J. Patterson (D-S.C.)	1987-
Bobbi Fiedler (R-Calif.)	1981-87	Patricia Saiki (R-Hawaii)	1987-91
Lynn M. Martin (R-Ill.)	1981-90	Louise M. Slaughter (D-N.Y.)	1987-
Marge Roukema (R-N.J.)	1981-	Nancy Pelosi (D-Calif.)	1987-
Claudine Schneider (R-R.I.)	1981-91	Nita M. Lowey (D-N.Y.)	1989-
Jean Ashbrook (R-Ohio)	1982-83	Jolene Unsoeld (D-Wash.)	1989-
Barbara B. Kennelly (D-Conn.)	1982-	Ileana Ros-Lehtinen (R-Fla.)	1989-
Sala Burton (D-Calif.)	1983-87	Jill Long (D-Ind.)	1989-
Barbara Boxer (D-Calif.)	1983-	Susan Molinari (R-N.Y.)	1990-
Katie Hall (D-Ind.)	1982-85	Maxine Waters (D-Calif.)	1991-
Nancy L. Johnson (R-Conn.)	1983-	Rosa DeLauro (D-Conn.)	1991-
Marcy Kaptur (D-Ohio)	1983-	Barbara-Rose Collins (D-Mich.)	1991-
Barbara Vucanovich (R-Nev.)	1983-	Joan Kelly Horn (D-Mo.)	1991-

1. Felton was sworn in November 21, 1922, to fill the vacancy created by the death of Thomas E. Watson, D (1921-22). The next day she gave up her seat to Walter F. George, D (1922-57), the elected candidate for the vacancy.
2. Never sworn in because Congress was not in session between election and expiration of term.

Source: *Women in Congress, 1917-1990*, Commission on the Bicentenary of the U.S. House of Representatives (Washington, D.C.: Government Printing Office, 1991).



## Hispanic Members of Congress

As of October 1991, twenty-three Hispanics had served in Congress; one in both the Senate and House, one in the Senate only, and twenty-one in the House only.

Following is a list of Hispanic members, their parties

and states, and the years in which they served. Not included are Hispanics who served as territorial delegates (ten), resident commissioners of Puerto Rico (thirteen), or nonvoting delegates of Guam (one) or the Virgin Islands (one).

### Senate

Dennis Chavez (D-N.M.)	1935-62
Joseph Montoya (D-N.M.)	1964-77

### House

Romualdo Pacheco (R-Calif.)	1877-78; 1879-89
Ladislav Lazaro (D-La.)	1913-27
Benigno Cardenas Hernandez (R-N.M.)	1915-17; 1919-21
Nestor Montoya (R-N.M.)	1921-23
Dennis Chavez (D-N.M.)	1931-35
Joachim Octave Fernandez (D-La.)	1931-41

Antonio Manuel Fernandez (D-N.M.)	1943-56
Henry B. Gonzalez (D-Texas)	1961-
Edward R. Roybal (D-Calif.)	1963-
E. "Kika" de la Garza (D-Texas)	1965-
Manuel Lujan, Jr. (R-N.M.)	1969-89
Herman Badillo (D-N.Y.)	1971-77
Robert Garcia (D-N.Y.)	1978-90
Tony Coelho (D-Calif.)	1979-89
Matthew G. Martinez (D-Calif.)	1982-
Solomon P. Ortiz (D-Texas)	1983-
William B. Richardson (D-N.M.)	1983-
Esteban E. Torres (D-Calif.)	1983-
Albert G. Bustamante (D-Texas)	1985-
Ileana Ros-Lehtinen (R-Fla.)	1989-
José E. Serrano (D-N.Y.)	1990-
Ed Pastor (D-Ariz.)	1991-

Sources: *Congressional Quarterly Weekly Report* and the Congressional Hispanic Caucus.

# CRS Report for Congress

## Women in the United States Congress

Mildred L. Amer  
Specialist in American National Government  
Government Division

April 10, 1991



**TABLE 3. Number of Women in the U.S. Congress, 65th-102d Congresses  
(1917-1989)**

Congress	Years	Total number of women in Congress	Number of women in House	Number of women in Senate
65th	1917-1919	1	1	-
66th	1919-1921	0	-	-
67th	1921-1923	4	3	1
68th	1923-1925	1	1	-
69th	1925-1927	3	3	-
70th	1927-1929	5	5	-
71st	1929-1931	9	9	-
72d	1931-1933	8	7	1
73rd	1933-1935	8	7	1
74th	1935-1937	8	6	2
75th	1937-1939	9	6	3
76th	1939-1941	9	8	1
77th	1941-1943	10	9	1
78th	1943-1945	9	8	1
79th	1945-1947	11	11	-
80th	1947-1949	8	7	1
81st	1949-1951	10	9	1
82d	1951-1953	11	10	1
83rd	1953-1955	15	12	3
84th	1955-1957	18	17	1
85th	1957-1959	16	15	1
86th	1959-1961	18	17	1
87th	1961-1963	20	18	2
88th	1963-1965	14	12	2
89th	1965-1967	13	11	2
90th	1967-1969	12	11	1
91st	1969-1971	11	10	1
92d	1971-1973	15	13	2
93rd	1973-1975	16	16	-
94th	1975-1977	19	19	-
95th	1977-1979	20	18	2
96th	1979-1981	17	16	1
97th	1981-1983	23	21	2
98th	1983-1985	24	22	2
99th	1985-1987	25	23	2
100th	1987-1989	25	23	2
101st	1989-1991	31	29	2
102d	1991-1993	31	29	2

**TABLE 1. Women in Congress, 65th-102d Congresses,  
by Congress**

Congress	Dates	House	Senate
102d	1991-1993	Helen Delich Bentley Barbara Boxer Beverly Barton Byron Barbara Rose-Collins Cardiss Collins Rosa DeLauro Joan Kelly Horn Nancy L. Johnson Marcy Kaptur Barbara Bailey Kennelly Marilyn Lloyd Jill Long Nita M. Lowey Jan Meyers Patsy Mink Susan Molinari Constance A. Morella Eleanor Holmes Norton Mary Rose Oakar Elizabeth J. Patterson Nancy Pelosi Ileana Ros-Lehtinen Margaret Scafati Roukema Patricia S. Schroeder Louise M. Slaughter Olympia J. Snowe Jolene Unsoeld Barbara Vucanovich Maxine Waters	Nancy L. Kassebaum Barbara Mikulski

**TABLE 1. Women in Congress, 65th-102d Congresses,  
by Congress--Continued**

Congress	Dates	House	Senate
101st	1989-1991	Helen Delich Bentley Corinne C. (Lindy) Boggs Barbara Boxer Beverly Barton Byron Cardiss Collins Nancy L. Johnson Marcy Kaptur Barbara Bailey Kennelly Marilyn Lloyd Jill Long* Nita M. Lowey Lynn M. Martin Jan Meyers Patsy Mink* Constance A. Morella Mary Rose Oaker Elizabeth J. Patterson Nancy Pelosi Ileana Ros-Lehtinen * Margaret Scafati Roukema Patricia F. Saiki Claudine Cmarada Schneider Patricia S. Schroeder Louise M. Slaughter Virginia Smith Olympia J. Snowe Jolene Unsoeld Barbara Vucanovich	Nancy L. Kassebaum Barbara Mikulski

\* Elected to fill a vacancy.

**TABLE 1. Women in Congress, 65th-102d Congresses,  
by Congress--Continued**

Congress	Dates	House	Senate
100th	1987-1989	Helen Delich Bentley Corinne C. (Lindy) Boggs Barbara Boxer Sala Burton <sup>1</sup> Beverly Barton Byron Cardiss Collins Nancy L. Johnson Marcy Kaptur Barbara Bailey Kennelly Marilyn Lloyd Lynn M. Martin Jan Meyers Constance A. Morella Mary Rose Oakar Elizabeth J. Patterson Nancy Pelosi* Margaret Scafati Roukema Patricia F. Saiki Claudine Cmarada Schneider Patricia S. Schroeder Louise M. Slaughter Virginia Smith Olympia J. Snowe Barbara Vucanovich	Nancy L. Kassebaum Barbara Mikulski

<sup>1</sup> Died on February 1, 1987.

\* Elected to fill a vacancy.

**TABLE 1. Women in Congress, 65th-102d Congresses,  
by Congress--Continued**

Congress	Dates	House	Senate
99th	1985-1987	Helen Delich Bentley Corinne C. (Lindy) Boggs Barbara Boxer Sala Burton Beverly Barton Byron Cardiss Collins Bobbi Fiedler Marjorie S. Holt Nancy L. Johnson Marcy Kaptur Barbara Bailey Kennelly Marilyn Lloyd Cathy Long* Lynn M. Martin Jan Meyers Barbara Ann Mikulski Mary Rose Oakar Margaret Scafati Roukema Claudine Cmarada Schneider Patricia S. Schroeder Virginia Smith Olympia J. Snowe Barbara Vucanovich	Paula Hawkins Nancy L. Kassebaum

\* Elected to fill a vacancy.

**TABLE 1. Women in Congress, 65th-102d Congresses,  
by Congress--Continued**

Congress	Dates	House	Senate
98th	1983-1985	Corinne C. (Lindy) Boggs Barbara Boxer Sala Burton* Beverly Barton Byron Cardiss Collins Geraldine Ann Ferraro Bobbi Fiedler Katie Hall Marjorie S. Holt Nancy L. Johnson Marcy Kaptur Barbara Bailey Kennelly Marilyn Lloyd Lynn M. Martin Barbara Ann Mikulski Mary Rose Oakar Margaret Scafati Roukema Claudine Cmarada Schneider Patricia S. Schroeder Virginia Smith Olympia J. Snowe Barbara Vucanovich	Paula Hawkins Nancy L. Kassebaum
97th	1981-1983	Jean Ashbrook* Corinne C. (Lindy) Boggs Beverly Barton Byron Shirley Anita Chisholm Cardiss Collins Millicent Fenwick Geraldine Ann Ferraro Bobbi Fiedler Katie Hall*	Paula Hawkins Nancy L. Kassebaum

\* Elected to fill a vacancy.

**TABLE 1. Women in Congress, 65th-102d Congresses,  
by Congress--Continued**

Congress	Dates	House	Senate
97th--Continued		Margaret M. Heckler Marjorie S. Holt Barbara Bailey Kennelly* Marilyn Lloyd Lynn M. Martin Barbara Ann Mikulski Mary Rose Oakar Margaret Scafati Roukema Claudine Cmarada Schneider Patricia S. Schroeder Virginia Smith	
96th	1979-1981	Corinne C. (Lindy) Boggs Beverly Barton Byron* Shirley Anita Chisholm Cardiss Collins Millicent Fenwick Geraldine Ann Ferraro Margaret M. Heckler Marjorie S. Holt Elizabeth Holtzman Marilyn Lloyd Barbara Ann Mikulski Mary Rose Oakar Patricia S. Schroeder Virginia Smith Olympia J. Snowe Gladys Noon Spellman	Nancy L. Kassebaum
95th	1977-1979	Corinne C. (Lindy) Boggs Yvonne Brathwaite Burke Shirley Anita Chisholm Cardiss Collins Millicent Fenwick Margaret M. Heckler Marjorie S. Holt	Maryon P. Allen* Muriel Humphrey*

\* Elected or appointed to fill a vacancy.

**TABLE 1. Women in Congress, 65th-102d Congresses,  
by Congress--Continued**

Congress	Dates	House	Senate
95th--Continued		Elizabeth Holtzman Barbara C. Jordan Martha Elizabeth Keys Marilyn Lloyd Helen Stevenson Meyner Barbara Ann Mikulski Mary Rose Oakar Shirley N. Pettis Patricia S. Schroeder Virginia Smith Gladys Noon Spellman	
94th	1975-1977	Bella S. Abzug Corinne C. (Lindy) Boggs Yvonne Brathwaite Burke Shirley Anita Chisholm Cardiss Collins Millicent Fenwick Margaret M. Heckler Marjorie S. Holt Elizabeth Holtzman Barbara C. Jordan Martha Elizabeth Keys Marilyn Lloyd Helen Stevenson Meyner Patsy Takemoto Mink Shirley N. Pettis* Patricia S. Schroeder Virginia Smith Gladys Noon Spellman Leonor Kretzer Sullivan	

\* Elected to fill a vacancy.

**TABLE 1. Women in Congress, 65th-102d Congresses,  
by Congress--Continued**

Congress	Dates	House	Senate
93d	1973-1975	Bella S. Abzug Corinne C. (Lindy) Boggs* Yvonne Brathwaite Burke Cardiss Collins* Ella T. Grasso Edith Green Martha Wright Griffiths Julia Butler Hansen Margaret M. Heckler Marjorie S. Holt Elizabeth Holtzman Barbara C. Jordan Patsy Takemoto Mink Patricia S. Schroeder Leonor Kretzer Sullivan	
92d	1971-1973	Bella S. Abzug Elizabeth B. Andrews* Shirley Anita Chisholm Florence Price Dwyer Ella T. Grasso Edith Green Martha Wright Griffiths Julia Butler Hansen Margaret M. Heckler Louise Day Hicks Patsy Takemoto Mink Charlotte Thompson Reid Leonor Kretzer Sullivan	Elaine Edwards* Margaret C. Smith

\* Elected or appointed to fill a vacancy.

**TABLE 1. Women in Congress, 65th-102d Congresses,  
by Congress--Continued**

Congress	Dates	House	Senate
91st	1969-1971	Shirley Anita Chisholm Florence Price Dwyer Edith Green Martha Wright Griffiths Julia Butler Hansen Margaret M. Heckler Catherine Dean May Patsy Takemoto Mink Charlotte Thompson Reid Leonor Kretzer Sullivan	Margaret C. Smith
90th	1967-1969	Frances Payne Bolton Florence Price Dwyer Edith Green Martha Wright Griffiths Julia Butler Hansen Margaret M. Heckler Edna Flannery Kelly Catherine Dean May Patsy Takemoto Mink Charlotte Thompson Reid Leonor Kretzer Sullivan	Margaret C. Smith
89th	1965-1967	Frances Payne Bolton Florence Price Dwyer Edith Green Martha Wright Griffiths Julia Butler Hansen Edna Flannery Kelly Catherine Dean May Patsy Takemoto Mink Charlotte Thompson Reid Leonor Kretzer Sullivan Lera Millard Thomas*	Maurine Neuberger Margaret C. Smith

\* Elected to fill a vacancy.

**TABLE 1. Women in Congress, 65th-102d Congresses,  
by Congress--Continued**

Congress	Dates	House	Senate
88th	1963-1965	Irene Bailey Baker* France Payne Bolton Florence Price Dwyer Edith Green Martha Wright Griffiths Julia Butler Hansen Maude Elizabeth Kee Edna Flannery Kelly Catherine Dean May Charlotte Thompson Reid Katharine Price St. George Leonor Kretzer Sullivan	Maurine Neuberger Margaret C. Smith
87th	1961-1963	Iris Faircloth Blicht Frances Payne Bolton Marguerite Stitt Church Florence Price Dwyer Kathryn Elizabeth Granahan Edith Green Martha Wright Griffiths Julia Butler Hansen Maude Elizabeth Kee Edna Flannery Kelly Catherine Dean May Catherine Dorris Norrell* Gracie Bowers Pfof Louise Goff Reece* Corrine Boyd Riley* Katharine Price St. George Leonor Kretzer Sullivan Jessica McCullough Weis	Maurine Neuberger Margaret C. Smith

\* Elected to fill a vacancy.

**TABLE 1. Women in Congress, 65th-102d Congresses,  
by Congress--Continued**

Congress	Dates	House	Senate
86th	1959-1961	Iris Faircloth Blicht Frances Payne Bolton Marguerite Stitt Church Florence Price Dwyer Kathryn Elizabeth Granahan Edith Green Martha Wright Griffiths Julia Butler Hansen* Maude Elizabeth Kee Edna Flannery Kelly Catherine Dean May Gracie Bowers Pfof Edith Nourse Rogers Katharine Price St. George Edna Oakes Simpson Leonor Kretzer Sullivan Jessica McCullough Weis	Maurine Neuberger* Margaret C. Smith
85th	1957-1959	Iris Faircloth Blicht Frances Payne Bolton Marguerite Stitt Church Florence Price Dwyer Kathryn Elizabeth Granahan* Edith Green Martha Wright Griffiths Cecil Murray Harden Maude Elizabeth Kee Edna Flannery Kelly Coya Gjesdal Knutson Gracie Bowers Pfof Edith Nourse Rogers Katharine Price St. George Leonor Kretzer Sullivan	Margaret C. Smith

\* Elected to fill a vacancy.

**TABLE 1. Women in Congress, 65th-102d Congresses,  
by Congress--Continued**

Congress	Dates	House	Senate
84th	1955-1957	Iris Faircloth Blicht Frances Payne Bolton Vera Daerr Buchanan Marguerite Stitt Church Mary Elizabeth Farrington+* Kathryn Elizabeth Granahan Edith Green Martha Wright Griffiths Cecil Murray Harden Maude Elizabeth Kee Edna Flannery Kelly Coya Gjesdal Knutson Gracie Bowers Pfof Edith Nourse Rogers Katharine Price St. George Leonor Kretzer Sullivan Ruth Thompson	Margaret C. Smith
83d	1953-1955	Frances Payne Bolton Vera Daerr Buchanan Marguerite Stitt Church Mary Elizabeth Farrington* + Cecil Murray Harden Maude Elizabeth Kee Edna Flannery Kelly Gracie Bowers Pfof Edith Nourse Rogers Katharine Price St. George Leonor Kretzer Sullivan Ruth Thompson	Hazel Hempel Abel* Eva Kelly Bowring* Margaret C. Smith*

\* Elected or appointed to fill a vacancy.

+ Non-voting delegate.

**TABLE 1. Women in Congress, 65th-102d Congresses,  
by Congress--Continued**

Congress	Dates	House	Senate
82d	1951-1953	Frances Payne Bolton Reva Zilpha Beck Bosone Vera Daerr Buchanan* Marguerite Stitt Church Cecil Murray Harden Maude Elizabeth Kee* Edna Flannery Kelly Edith Nourse Rogers Katharine Price Collier Ruth Thompson	Margaret C. Smith
81st	1949-1951	France Payne Bolton Reva Zilpha Beck Bosone Helen Gahagan Douglas Cecil Murray Harden Edna Flannery Kelly* Mary Teresa Norton Edith Nourse Rogers Katharine Price St. George Chase Going Woodhouse	Margaret C. Smith
80th	1947-1949	Frances Payne Bolton Helen Gahagan Douglas Georgia Lee Lusk Mary Teresa Norton Edith Nourse Rogers Katharine Price St. George Margaret Chase Smith	Vera Bushfield*
79th	1945-1947	Frances Payne Bolton Emily Taft Douglas Helen Gahagan Douglas	

\* Elected or appointed to fill a vacancy.

**TABLE 1. Women in Congress, 65th-102d Congresses,  
by Congress--Continued**

Congress	Dates	House	Senate
79th--Continued		Clare Booth Luce Helen Douglas Mankin* Mary Teresa Norton Eliza Jane Pratt* Edith Nourse Rogers Margaret Chase Smith Jessie Sumner Chase Going Woodhouse	
78th	1943-1945	Frances Payne Bolton Willa Lybrand Fulmer* Clare Booth Luce Mary Teresa Norton Edith Nourse Rogers Margaret Chase Smith Winifred Claire Stanley Jessie Sumner	Hattie W. Caraway
77th	1941-1943	Veronica Grace Boland* Frances Payne Bolton Katharine Edgar Byron* Mary Teresa Norton Caroline Love O'Day Jeannette Rankin Edith Nourse Rogers Margaret Chase Smith Jessie Sumner	Hattie W. Caraway
76th	1939-1941	Frances Payne Bolton* Florence Reville Gibbs* Clara Gooding McMillan* Mary Teresa Norton Caroline Love O'Day Edith Nourse Rogers Margaret Chase Smith* Jessie Sumner	Hattie W. Caraway

\* Elected to fill a vacancy.

**TABLE 1. Women in Congress, 65th-102d Congresses,  
by Congress--Continued**

Congress	Dates	House	Senate
75th	1937-1939	Elizabeth Hawley Gasque* Nan Wood Honeyman Virginia Ellis Jenckes Mary Teresa Norton Caroline Love O'Day Edith Nourse Rogers	Hattie W. Caraway Dixie B. Graves* Gladys Pyle*
74th	1935-1937	Isabella Selmes Greenway Virginia Ellis Jenckes Florece Prag Kahn Mary Teresa Norton Caroline Love O'Day Edith Nourse Rogers	Hattie W. Caraway Rose M. Long*
73d	1933-1935	Marian Williams Clarke* Isabella Selmers Greenway* Virginia Ellis Jenckes Florence Prag Kahn Kathryn O'Loughlin McCarthy Mary Teresa Norton Edith Nourse Rogers	Hattie W. Caraway
72d	1931-1933	Willa McCord Eslick* Florence Prag Kahn Mary Teresa Norton Ruth Bryan Owen Ruth Sears Pratt Edith Nourse Rogers Effiegene Locke Wingo	Hattie W. Caraway*

\* Elected or appointed to fill a vacancy.

**TABLE 1. Women in Congress, 65th-102d Congresses,  
by Congress--Continued**

Congress	Dates	House	Senate
71st	1929-1931	Florence Prag Kahn Katherine Gudger Langley Ruth Hanna McCormick Mary Teresa Norton Pearl Peden Oldfield Ruth Bryan Owen Ruth Sears Pratt Edith Nourse Rogers Effiegene Locke Wingo	
70th	1927-1929	Florence Prag Kahn Katherine Gudger Langley Mary Teresa Norton Pearl Peden Oldfield* Edith Nourse Rogers	
69th	1925-1927	Florence Prag Kahn* Mary Teresa Norton Edith Nourse Rogers*	
68th	1923-1925	Mae Ella Nolan	
67th	1921-1923	Winnifred Mason Huck* Mae Ella Nolan* Alice Mary Robertson	Rebecca L. Felton*
66th	1919-1921	None	
65th	1917-1919	Jeannette Rankin	

\* Elected or appointed to fill a vacancy.