

Columbia, South Carolina; Tampa, Orlando, Palm Beach, Jacksonville, Florida, 9/20-21/79

Folder Citation: Collection: Records of the First Lady's Office; Series: Mary Hoyt's Domestic Trip Files; Folder: Columbia, South Carolina; Tampa, Orlando, Palm Beach, Jacksonville, Florida, 9/20-21/79; Container 15

To See Complete Finding Aid:

http://www.jimmycarterlibrary.gov/library/findingaids/First_Lady's_Office.pdf

Office of the First Lady's Press Secretary

NOTICE TO THE PRESS

Press Credentials - First Lady's trip to Columbia, S.C., Tampa, Orlando, West Palm Beach and Jacksonville, Fl.

Columbia, S.C. - Contact: 803-799-7798
Monday, 9/17 and Tuesday, 9/18
9:00 am - 5:00 pm

Credential pick-up: Wednesday, 9/19
3:00 pm - 7:00 pm

Thursday, 9/20
7:00 am - 8:00 am

South Carolina State Dem. HQ
2801 Devine Street
3rd. floor - Columbia, S.C.

Tampa, Fl. - Contact: 813-872-0553
Tuesday, Sept. 18 9:00 am - 5:00 pm
Wednesday, Sept. 19 9:00 am - 12 noon

Credential pick-up: Thursday, 9/20
8:00 am - 11:00 am
Downtown Holiday Inn
1111 W. Fortune
Room 908

Orlando, Fl.- Contact: 305-422-2053
Tuesday, Sept. 18 9:00 am - 5:00 pm
Wednesday, Sept. 19 9:00 am - 12 noon

Credential pick-up: Thurs., 9/20
12 noon - 2:00 pm
Carter/Mondale HQ
924 Magnolia Ave. Suite 319

West Palm Beach - Contact: 305-655-5500
Tuesday, Sept. 18 9:00 am - 5:00 pm
Wednesday, Sept. 19 9:00 am - 12 noon

Credential pick-up: Thursday, Sept. 20
3:00 - 5:00 pm
Carter-Mondale HQ
205 Datura Street

Jacksonville, Fl - Contact: 904-633-3770
Tuesday, Sept. 18 9:00 am - 5:00 pm
Wednesday, Sept. 19 9:00 am - 5:00 pm

Credential pick-up: Friday, Sept. 21 8:00 - 10:00 am
Mayor's Press Office
Room 1401
220 East Bay Street

#

Office of the First Lady's Press Secretary

SUMMARY SCHEDULE

TRIP OF THE FIRST LADY TO
SOUTH CAROLINA AND FLORIDA

Thursday, September 20 - Friday, September 21, 1979

All times are local

Thursday, September 20, 1979

7:45 am Press check-in, Special Air Missions Counter,
Andrews AFB

Press Note: All baggage must have
ID tags

8:10 am THE FIRST LADY DEPARTS THE WHITE HOUSE ENROUTE
ANDREWS AFB

8:40 am THE FIRST LADY ARRIVES ANDREWS AFB, BOARDS AIRCRAFT
AND DEPARTS ENROUTE COLUMBIA, SOUTH CAROLINA

Flying time: 1 hour, 10 minutes

9:50 am THE FIRST LADY ARRIVES COLUMBIA MUNICIPAL AIRPORT,
COLUMBIA, SOUTH CAROLINA

Open Press Coverage

THE FIRST LADY PROCEEDS TO PRESS AREA FOR BRIEF COMMENTS
TO THE PRESS

10:00 am THE FIRST LADY DEPARTS COLUMBIA MUNICIPAL AIRPORT
ENROUTE THE GOVERNOR'S MANSION

10:15 am THE FIRST LADY ARRIVES GOVERNOR'S MANSION AND PROCEEDS
TO OPEN HOUSE RECEPTION

Open Press Coverage

FIRST LADY REMARKS

10:45 am THE FIRST LADY DEPARTS GOVERNOR'S MANSION ENROUTE
SOUTH CAROLINA STATE HOSPITAL

10:55 am THE FIRST LADY ARRIVES WILLIAM S. HALL PSYCHIATRIC
INSTITUTE, SOUTH CAROLINA STATE HOSPITAL AND PROCEEDS
ON TOUR

11:10 am TOUR CONCLUDES. THE FIRST LADY PROCEEDS TO AUDITORIUM

11:15 am THE FIRST LADY ARRIVES AUDITORIUM FOR BOARD MEETING
OF THE SOUTH CAROLINA MENTAL HEALTH ASSOCIATION

Open Press Coverage

FIRST LADY REMARKS

11:45 am THE FIRST LADY DEPARTS SOUTH CAROLINA STATE HOSPITAL
ENROUTE HOLIDAY INN CENTER CITY

12:00 pm THE FIRST LADY ARRIVES HOLIDAY INN CENTER CITY AND
PROCEEDS TO FUNDRAISING LUNCHEON SPONSORED BY CARTER/
MONDALE PRESIDENTIAL COMMITTEE

Open Press Coverage

FIRST LADY REMARKS

1:05 pm THE FIRST LADY DEPARTS HOLIDAY INN CENTER CITY
ENROUTE COLUMBIA MUNICIPAL AIRPORT

1:25 pm THE FIRST LADY ARRIVES MUNICIPAL AIRPORT, BOARDS
AIRCRAFT AND DEPARTS COLUMBIA, SOUTH CAROLINA ENROUTE
TAMPA, FLORIDA

Flying time: 1 hour, 10 minutes

2:35 pm THE FIRST LADY ARRIVES TAMPA INTERNATIONAL AIRPORT,
TAMPA, FLORIDA

Open Press Coverage

THE FIRST LADY PROCEEDS TO PRESS AREA FOR BRIEF
COMMENTS TO THE PRESS

2:45 pm THE FIRST LADY DEPARTS TAMPA INTERNATIONAL AIRPORT
ENROUTE HOLIDAY INN DOWNTOWN

3:00 pm THE FIRST LADY ARRIVES HOLIDAY INN DOWNTOWN AND PROCEEDS
TO RIVERFRONT ROOM FOR RECEPTION

Open Press Coverage

FIRST LADY REMARKS

3:25 pm THE FIRST LADY DEPARTS HOLIDAY INN ENROUTE TAMPA
MUSEUM

3:30 pm THE FIRST LADY ARRIVES TAMPA MUSEUM FOR DEDICATION AND
OPENING OF MUSEUM

Open Press Coverage

FIRST LADY REMARKS

4:00 pm PROGRAM CONCLUDES. THE FIRST LADY PROCEEDS ON BRIEF
TOUR OF MUSEUM

Press Photo Opportunity

4:15 pm THE FIRST LADY DEPARTS TAMPA MUSEUM ENROUTE CARTER
RESIDENCE

4:20 pm THE FIRST LADY ARRIVES CARTER RESIDENCE AND PROCEEDS
INSIDE FOR RECEPTION SPONSORED BY CARTER/MONDALE PRESIDENTIAL
COMMITTEE

Press Pool Coverage

FIRST LADY REMARKS

4:50 pm THE FIRST LADY DEPARTS CARTER RESIDENCE ENROUTE TAMPA
INTERNATIONAL AIRPORT

5:15 pm THE FIRST LADY ARRIVES TAMPA INTERNATIONAL AIRPORT,
BOARDS AIRCRAFT AND DEPARTS ENROUTE ORLANDO, FLORIDA

Flying time: 30 minutes

5:45 pm THE FIRST LADY ARRIVES ORLANDO/HERNDON AIRPORT, ORLANDO,
FLORIDA

Open Press Coverage

THE FIRST LADY PROCEEDS TO PLATFORM FOR AIRPORT RECEPTION

FIRST LADY REMARKS

6:05 pm THE FIRST LADY DEPARTS ORLANDO/HERNDON AIRPORT ENROUTE
HANDY RESIDENCE

6:20 pm THE FIRST LADY ARRIVES HANDY RESIDENCE FOR PERSONAL/STAFF
TIME

7:45 pm THE FIRST LADY PROCEEDS TO FUNDRAISING RECEPTION SPONSORED
BY CARTER/MONDALE PRESIDENTIAL COMMITTEE AT HANDY RESIDENCE

Press Pool Coverage

FIRST LADY REMARKS

8:20 pm THE FIRST LADY DEPARTS HANDY RESIDENCE ENROUTE SEA WORLD

8:45 pm THE FIRST LADY ARRIVES SEA WORLD FOR FUNDRAISING DINNER
SPONSORED BY CARTER/MONDALE PRESIDENTIAL COMMITTEE

Open Press Coverage

FIRST LADY REMARKS

10:00 pm THE FIRST LADY DEPARTS SEA WORLD ENROUTE ORLANDO JETPORT

10:20 pm THE FIRST LADY ARRIVES ORLANDO JETPORT, BOARDS AIRCRAFT
AND DEPARTS ENROUTE PALM BEACH, FLORIDA

Flying time: 35 minutes

10:55 pm THE FIRST LADY ARRIVES PALM BEACH INTERNATIONAL AIRPORT

Open Press Coverage

11:00 pm THE FIRST LADY DEPARTS PALM BEACH INTERNATIONAL AIRPORT
ENROUTE HELEN WILKES HOTEL, WEST PALM BEACH

11:15 pm THE FIRST LADY ARRIVES HELEN WILKES HOTEL AND PROCEEDS
TO SUITE

RON HELEN WILKES HOTEL

Friday, September 21, 1979

9:30 am THE FIRST LADY ARRIVES RECEPTION SPONSORED BY CARTER/
MONDALE PRESIDENTIAL COMMITTEE AT HELEN WILKES HOTEL

Open Press Coverage

FIRST LADY REMARKS

10:30 am THE FIRST LADY DEPARTS HELEN WILKES HOTEL ENROUTE
PALM BEACH INTERNATIONAL AIRPORT

11:00 am THE FIRST LADY ARRIVES PALM BEACH INTERNATIONAL AIRPORT
BOARDS AIRCRAFT AND DEPARTS ENROUTE JACKSONVILLE, FLORIDA

Flying time: 50 minutes

11:50 am THE FIRST LADY ARRIVES JACKSONVILLE INTERNATIONAL AIRPORT

Open Press Coverage

THE FIRST LADY PROCEEDS TO PRESS AREA FOR BRIEF COMMENTS
TO THE PRESS

12:00 pm THE FIRST LADY DEPARTS JACKSONVILLE AIRPORT ENROUTE
DANIEL STATE OFFICE BUILDING

12:30 pm THE FIRST LADY ARRIVES DANIEL STATE OFFICE BUILDING
OUTSIDE PATIO AREA FOR BROWN BAG COMMUNITY LUNCH

Open Press Coverage

FIRST LADY REMARKS

1:30 pm THE FIRST LADY DEPARTS DANIEL STATE OFFICE BUILDING
ENROUTE JACKSONVILLE INTERNATIONAL AIRPORT

1:55 pm THE FIRST LADY ARRIVES JACKSONVILLE INTERNATIONAL
AIRPORT, BOARDS AIRCRAFT AND DEPARTS ENROUTE ANDREWS
AFB, WASHINGTON, D.C.

Flying time: 1 hour, 45 minutes

3:40 pm THE FIRST LADY ARRIVES ANDREWS AFB, WASHINGTON, D.C.
BOARDS MOTORCADE AND DEPARTS ENROUTE THE WHITE HOUSE

4:10 pm THE FIRST LADY ARRIVES THE WHITE HOUSE

#

FOR IMMEDIATE RELEASE

SEPTEMBER 14, 1979

Office of the First Lady's Press Secretary

THE WHITE HOUSE

First Lady Rosalynn Carter has postponed her visit to Birmingham, Alabama on Wednesday, September 20 as a result of the devastation from the hurricane.

The visit to Birmingham has been rescheduled for Monday, October 8.

The First Lady will depart Washington enroute Columbia, South Carolina on Thursday, September 21 in the early morning. The remainder of the First Lady's schedule will remain the same.

#

#

#

Office of the First Lady's Press Secretary

Fact Sheet

The Mental Health Association of South Carolina

The Mental Health Association is celebrating its 25th Anniversary this year. They have 33 chapters throughout the state and work closely with the Department of Mental Health.

The priorities of the MHA in South Carolina are: 1) sufficient funding for programs from federal, state and local sources; 2) the building of a more complete community-based system for mental health care, emphasizing prevention, early intervention and brief local hospitalizations; and 3) responsible deinstitutionalization with after-care and alternate care systems well developed in local communities.

William S. Hall Psychiatric Institute

One of the six major treatment facilities in South Carolina, the Institute located on the grounds of the State Hospital, has been named as the Department of Neuropsychiatry for the new University of South Carolina Medical School. It is a training, educational and research hospital with residency programs, two laboratories and offers limited clinical service in inpatient and outpatient psychiatry for all ages.

1

#

#

#

Office of the First Lady's Press Secretary

Fact Sheet

The Tampa Museum

The Tampa Museum is the result of extraordinary cooperation among arts organizations, private citizens and city government. In 1974, the city of Tampa requested that the Arts Council of Tampa, in consultation with community art organizations, develop plans for an art center for both visual and performing arts.

The earliest plan envisioned both the Tampa Bay Arts Center and the Tampa Junior Museum as major elements of the new museum. In 1977, the Tampa Bay Arts Center and the Tampa Junior Museum founded the Tampa Museum Federation to coordinate this partnership. That same year plans were modified and only the museum was approved for construction. Groundbreaking took place in December, 1977.

Inaugural Exhibit: Romantic America - The Middle Decades of the Nineteenth Century

This exhibit celebrates the nation's history and cultural environment during the period of Tampa's incorporation. It includes paintings, sculptures, drawings, prints, books, folk and decorative art. The exhibit recreates the quality of life in the mid-19th century in America and demonstrates how the arts flourished as an expression of both shared ideals and everyday experiences during this period of great intellectual, literary and social activity.

The Inaugural Exhibit represents over 150 artists and over 200 works have been assembled from 30 private collections, galleries and major museums throughout the country.

#

THE WHITE HOUSE
WASHINGTON

Air Fare for Southern Trip

Wash - Columbia, S.C. - \$104.00
Columbia, S.C. to Tampa - \$105.00
Tampa to Orlando - \$41.00
Orlando to West Palm - \$57.00
West Palm to Jacksonville - \$81.00
Jacksonville to Andrews - \$131.00

Total: \$520.00

The Tampa to Orlando flight may actually be higher since we are going to charter a press plane for that leg of the trip. I will have the figure later today.

THE WHITE HOUSE
WASHINGTON

Air Fare for Southern Trip

Wash - Columbia, S.C. - \$104.00

Columbia, S.C. to Tampa - \$105.00

Tampa to Orlando - \$41.00

Orlando to West Palm - \$57.00

West Palm to Jacksonville - \$81.00

Jacksonville to Andrews - \$131.00

Total: \$520.00

The Tampa to Orlando flight may actually be higher since we are going to charter a press plane for that leg of the trip. I will have the figure later today.

Palm Beach

THE WHITE HOUSE
WASHINGTON

WPEC - (ABC) ³⁰⁵⁻ 848-7211

WPTU - (NBC) ³⁰⁵⁻ 655-5455

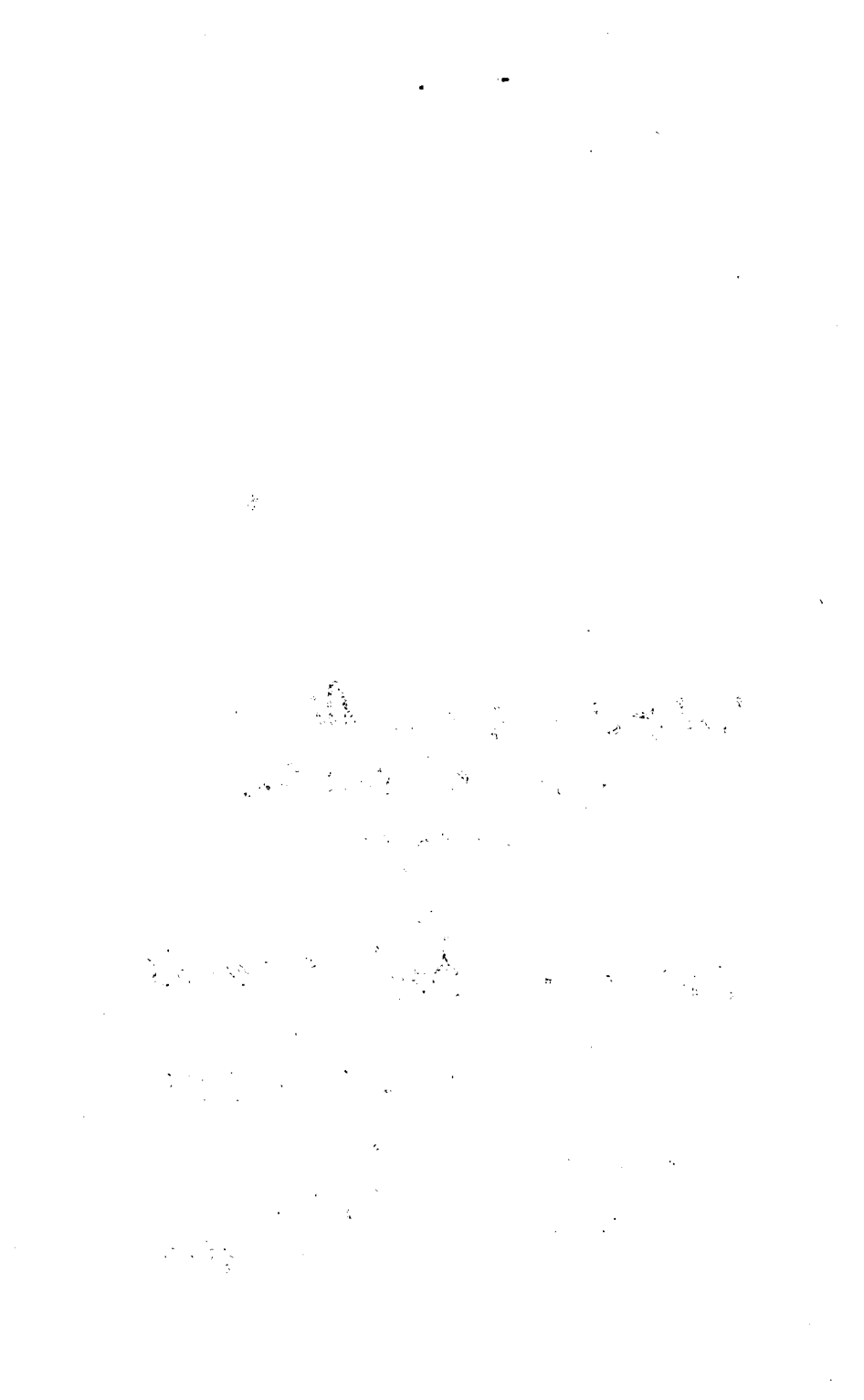
Laila Doo -

WPEC - News Director
Joe Mainella -
Managing

WPTU - Bob Howick

305-655-5455

interview:
Deborah Caldwell -
Zipes



DATE: September 18, 1979

MEMORANDUM FOR:

THE WHITE HOUSE MILITARY OFFICE

The following individuals were manifested aboard the following aircraft: C-9

TRIP ITINERARY
 Fla.
 Fla.
 Fla.
 Fla.
 Fla.
 Fla.
 Fla.

Date(s) of trip:
September 20-21, 1979

<u>NAME & TITLE/OFFICE</u>	<u>STATUS</u>		Andrews AFB to Columbia, SC	Columbia, SC to Tampa, Fla.	Tampa, Fla. to Orlando, Fla.	Orlando, Fla. to Palm Beach, Fla.	Palm Beach, Fla. to Jacksonville, Fla.	Jacksonville, Fla. to Andrews AFB		<u>JUSTIFICATION (OFFICIAL TRAVEL ONLY)</u>
	OFFICIAL	UNOFFICIAL								
Maureen Santini			X	X	X	X	X	X		Associated Press
Dean Reynolds			X	X	X	X	X	X		United Press International
Joy Billington			X	X	X	X	X	X		Washington Star
Fred Barbash						X	X	X		Washington Post
Terry Smith					X	X	X	X		New York Times
Ann McFeatters			X	X	X	X	X	X		Scripps-Howard
Peg Simpson						X	X	X		Hearst Newspapers
Diana Walker			X	X	X	X	X	X		Time Magazine
Ann Compton			X	X	X	X	X	X		ABC-TV
Terry Ray			X	X			X	X		ABC-TV

NOTE: REIMBURSEMENT IS REQUIRED FOR ALL UNOFFICIAL PASSENGERS

DATE: September 18, 1979

MEMORANDUM FOR:

THE WHITE HOUSE MILITARY OFFICE

The following individuals were manifested aboard the following aircraft: C-9

TRIP ITINERARY

Date(s) of trip:
September 20-21, 1979

NAME & TITLE/OFFICE	STATUS		Andrews AFB to Columbia, SC	Columbia, SC to Tampa, Fla.	Tampa, Fla. to Orlando, Fla.	Orlando, Fla. to Palm Beach, Fla.	Palm Beach, Fla. to Jacksonville, Fla.	Jacksonville, Fla. to Andrews AFB	JUSTIFICATION (OFFICIAL TRAVEL ONLY)
	OFFICIAL	UNOFFICIAL							
Bill Johnson				X	X	X	X	X	ABC-TV
Charles Finamore				X	X	X	X	X	ABC-TV
Robert Hager				X		X	X		NBC-TV
Edward Johnson				X	X	X	X		NBC-TV
Charles Ray				X	X	X	X		NBC-TV
Luther Brown			X	X			X		NBC-TV
William Jenkins			X	X	X	X	X	X	ABC-TV
Chris Ogden			X	X	X	X	X	X	Time Magazine
Catherine Fox			X	X	X	X	X	X	MacLeans Magazine
Hank Drane						X	X		Florida Times Union

NOTE: REIMBURSEMENT IS REQUIRED FOR ALL UNOFFICIAL PASSENGERS

DATE: September 18, 1979

MEMORANDUM FOR:

THE WHITE HOUSE MILITARY OFFICE

The following individuals were manifested aboard the following aircraft: C-9

TRIP ITINERARY
 Andrews AFB, Fla.
 Columbia, SC
 Tampa, Fla.
 Orlando, Fla.
 Palm Beach, Fla.
 Jacksonville, Fla.
 Andrews AFB

Date(s) of trip:
September 20-21, 1979

<u>NAME & TITLE/OFFICE</u>	<u>STATUS</u>		Andrews AFB to Columbia, SC	Columbia, SC to Tampa, Fla.	Tampa, Fla. to Orlando, Fla.	Orlando, Fla. to Palm Beach, Fla.	Palm Beach, Fla. to Jacksonville, Fla.	Jacksonville, Fla. to Andrews AFB		<u>JUSTIFICATION (OFFICIAL TRAVEL ONLY)</u>
	OFFICIAL	UNOFFICIAL								
Laura Kavesh					X	X	X			Orlando Sentinel Star
Margarita Fichtner					X	X	X			Miami Herald

NOTE: REIMBURSEMENT IS REQUIRED FOR ALL UNOFFICIAL PASSENGERS

Faith Paul

THE WHITE HOUSE

WASHINGTON

August 17, 1979

TO: Senior Staff
FROM: Jane Fenderson *JF*
RE: Mrs. Carter's out of town travel in September

Mrs. Carter has approved the following travel schedule for September. Please be aware that some of the events have not been confirmed or announced.

Sept. 7-8

Political trip to Iowa - including the Linn County (Cedar Rapids) Democratic Dinner Friday evening; the Iowa Daily Press Association convention in Cedar Rapids on Saturday; and the Polk County Democratic Dinner in Des Moines on Saturday.

Sept. 12

An up and back trip to New York City for a C/M fundraising dinner.

Sept. 19-21

Southern trip: including a C/M fundraising dinner in Birmingham, Alabama on Wednesday evening, Sept. 18; a mental health event and C/M fundraising lunch in Columbia, South Carolina on Sept. 20; a political stop in Tampa on the afternoon of Sept. 20; and a C/M fundraising dinner at Sea World in Orlando that evening. Mrs. Carter will overnight Sept. 20 in Florida and will spend part of Friday, Sept. 21, campaigning in Florida.

Sept. 27

A one-day trip to Pennsylvania and possibly Ohio. Confirmed is a C/M fundraising dinner in Pittsburgh that evening. Unconfirmed, but a strong possibility is a trip to Erie in the afternoon prior to the Pittsburgh dinner to receive a Woman of the Year award from the Erie Democratic Women's Council.

THE WHITE HOUSE

WASHINGTON

September 15, 1979

TO: DAVID HOSTETTLER

FROM: CARROLL ANN RAMBO 209EW x7910

RE: CONTACT NUMBERS FOR ADVANCE PEOPLE FOR TRIP OF THE FIRST LADY

COLUMBIA, SOUTH CAROLINA

Advance staying at Holiday Inn City Center in Columbia 803/799-7800

Susan Watkins - lead advance, arriving 9/14 - through 9/20

Katie Varney - staff advance, arriving 9/15 - through 9/20

Lisa Strasburg - press advance, arriving 9/15 - through 9/20

TAMPA, FLORIDA

Advance staying at Holiday Inn Downtown in Tampa 813/233-1351

Ruth Berry - lead advance, arriving 9/14 - through 9/20

Bobby Hatfield - staff advance, arriving 9/16 - through 9/20

Sam Meyers - press advance, arriving 9/16 - through 9/20

ORLANDO, FLORIDA

Advance staying at Airport Holiday Inn in Orlando 305/859-7900

Walt Collins - lead advance, arriving 9/14 - through 9/20

Kate Steed - staff advance, arriving 9/16 - through 9/20

Rick Jасulca - press advance, arriving 9/15 - through 9/20

WEST PALM BEACH, FLORIDA

Advance staying at Holiday Inn Downtown in W.P.B. 305/655-8800

John Plaxco - lead advance, arriving 9/15 - through 9/21

Linda Edmonds - press advance, arriving 9/16 - through 9/21

NOTE: WEST PALM BEACH HOLIDAY INN DOWNTOWN IS OVERNIGHT LOCATION
FOR THE FIRST LADY NIGHT OF 9/20/79

JACKSONVILLE, FLORIDA

Advance staying at Downtown Hilton in Jacksonville 904/398-3561

David Manley - lead advance, arriving 9/14 - through 9/21

Kevin Foley - staff advance, arriving 9/17 - through 9/21

Harold Kranz - press advance, arriving 9/16 - through 9/21

#

7:10 pm EDT Press pool #2 departs Herndon Airport enroute Handy residence

7:20 pm EDT Press pool #2 arrives Handy residence and proceeds inside to press area

7:30 pm EDT THE FIRST LADY ARRIVES LIVING ROOM FOR RECEPTION SPONSORED BY CARTER/MONDALE PRESIDENTIAL COMMITTEE

Press Pool #2 Coverage

Remarks by Ambassador Marvin Warner

FIRST LADY REMARKS

Press Facilities: Mult
10' throw

7:40 pm EDT RECEIVING LINE COMMENCES

Brief Photo Session
Press Pool #2 Coverage

8:15 pm EDT THE FIRST LADY DEPARTS HANDY RESIDENCE ENROUTE SEA WORLD

Press Pool #2 Accompanies

8:45 pm EDT THE FIRST LADY ARRIVES SEA WORLD AND PROCEEDS TO LUAU TERRACE FOR FUNDRAISING RECEPTION/DINNER SPONSORED BY CARTER/MONDALE PRESIDENTIAL COMMITTEE

Open Press Coverage

Program Commences

Remarks by Governor Graham

FIRST LADY REMARKS

Remarks by Evan Dobbelle

Press Facilities: Risers
Mult
Lights
25' throw

9:00 pm EDT PROGRAM CONCLUDES. RECEIVING LINE COMMENCES

Open Press Coverage

9:55 pm EDT THE FIRST LADY DEPARTS SEA WORLD ENROUTE JETPORT, ORLANDO INTERNATIONAL AIRPORT

Press Follows

10:20 pm EDT THE FIRST LADY ARRIVES JETPORT, ORLANDO INTERNATIONAL AIRPORT, BOARDS AIRCRAFT AND DEPARTS ENROUTE PALM BEACH, FLORIDA

Flying time: 35 minutes

10:55 pm EDT THE FIRST LADY ARRIVES PALM BEACH INTERNATIONAL AIRPORT, PALM BEACH, FLORIDA

Open Press Coverage

The First Lady is greeted by:

Robert Levinson
State Senator Don Childers
State Representative Ray Liberti
State Representative James Watt
State Representative Eleanor Weinstock
Mr. and Mrs. Howard Goodman
Mrs. and Mrs. Richard DiFilippo
Vice Mayor Ruby Bullock, West Palm Beach
Chief W. Darden, Chief, Riviera Beach Police
Peggy Evatt, West Palm Beach County Commissioner
Eva Mack, West Palm Beach City Commissioner
Jackie Malone, Palm Beach County Democratic Chair
Richard Ellington, County Attorney, Palm Beach County
John Sansbury, Palm Beach County Administrator

11:00 pm EDT THE FIRST LADY DEPARTS PALM BEACH INTERNATIONAL AIRPORT
ENROUTE HELEN WILKES HOTEL

Press Follows

11:10 pm EDT THE FIRST LADY ARRIVES HELEN WILKES HOTEL AND PROCEEDS
TO SUITE

11:15 pm EDT Press bus departs Helen Wilkes Hotel
enroute Holiday Inn Downtown

11:20 pm EDT Press bus arrives Holiday Inn Downtown

Press Note: Press are preregistered -
keys will be handed out
on bus
luggage delivered to
your rooms

Friday, September 21, 1979

BAGGAGE CALL: 8:00 am - Bags must be placed in lobby
area

8:45 am EDT Press bus departs Holiday Inn downtown
enroute Helen Wilkes Hotel

8:50 am EDT Press bus arrives Helen Wilkes Hotel,
press proceed to press area to preposition

Press Facilities: Mult
Risers
Power
Lights
40' throw

9:30 am EDT THE FIRST LADY ARRIVES BANQUET ROOM FOR BREAKFAST SPONSORED
BY CARTER/MONDALE PRESIDENTIAL COMMITTEE

Open Press Coverage

Program Commences

Remarks by Vice Mayor Bullock
Remarks by Chairman Duran
Remarks by Chief Darden
Remarks by Commissioner Evatt

FIRST LADY REMARKS

9:55 am EDT PROGRAM CONCLUDES. THE FIRST LADY GREETES GUESTS AT THEIR TABLES

Press Note: LD's available in lobby area

10:20 am EDT THE FIRST LADY PROCEEDS TO PRESS AREA FOR BRIEF COMMENTS TO THE PRESS

Open Press Coverage

10:30 am EDT THE FIRST LADY DEPARTS HELEN WILKES HOTEL ENROUTE PALM BEACH INTERNATIONAL AIRPORT

Press Follows

10:45 am EDT THE FIRST LADY ARRIVES PALM BEACH INTERNATIONAL AIRPORT, BOARDS AIRCRAFT AND DEPARTS ENROUTE JACKSONVILLE, FLORIDA

Flying time: 50 minutes
Snacks will be served

11:50 am EDT THE FIRST LADY ARRIVES JACKSONVILLE INTERNATIONAL AIRPORT, JACKSONVILLE, FLORIDA

Open Press Coverage

The First Lady is greeted by:

Mayor and Mrs. Jake Godbold
President of the City Council and Mrs. David Harrell
Chairman and Mrs. Mark Brady, Duval County Democratic
Party
Jean Dunbar, Miss Jacksonville
Darby Craig, America's Senior Star

12:05 pm EDT THE FIRST LADY PROCEEDS TO PRESS AREA FOR BRIEF COMMENTS TO THE PRESS

Open Press Coverage

Press Facilities: Mult
5 LD's

12:10 pm EDT THE FIRST LADY DEPARTS JACKSONVILLE AIRPORT ENROUTE DANIEL STATE OFFICE BUILDING

Press Follows

12:30 pm EDT THE FIRST LADY ARRIVES DANIEL STATE OFFICE BUILDING AND PROCEEDS TO STAGE

Program Commences

Open Press Coverage

Remarks by Mayor Godbold

FIRST LADY REMARKS

Press Facilities: Mult
Risers
6 LD's
30' throw

12:50 am EDT PROGRAM CONCLUDES. THE FIRST LADY DEPARTS PLATFORM
AND GREETES GUESTS

Press Note: Press proceed to
press area B for
coverage of greeting
of guests

1:30 pm EDT THE FIRST LADY DEPARTS DANIEL STATE OFFICE BUILDING
ENROUTE JACKSONVILLE INTERNATIONAL AIRPORT

Press Follows

2:05 pm EDT THE FIRST LADY ARRIVES JACKSONVILLE INTERNATIONAL
AIRPORT, BOARDS AIRCRAFT AND DEPARTS ENROUTE ANDREWS
AFB, WASHINGTON, D.C.

Flying time: 1 hour, 45 minutes
Lunch will be served

3:50 pm EDT THE FIRST LADY ARRIVES ANDREWS AFB, WASHINGTON, D.C.,
BOARDS MOTORCADE AND DEPARTS ENROUTE THE WHITE HOUSE

4:20 pm EDT THE FIRST LADY ARRIVES THE WHITE HOUSE

Press Pool #1 Coverage - Coverage of Reception at Handy Residence

AP writer
UPI writer
Pool reporter - New York Times
Pool TV crew - NBC (2)
Lighting technician (ABC)
Time Magazine photo

Press Pool #2 Coverage - Coverage of Reception at Carter Residence

AP writer
UPI writer
Pool reporter - Scripps-Howard
ABC TV crew (2)
NBC TV crew (2)
Lightning Technician
ABC Correspondent
NBC Correspondent
Time photo
Newsweek photo

#

Office of the First Lady's Press Secretary

VISIT OF THE FIRST LADY TO
SOUTH CAROLINA AND FLORIDA

SEPTEMBER 20-21, 1979

Thursday, September 20, 1979

8:35 am EDT THE FIRST LADY DEPARTS ANDREWS AFB ENROUTE COLUMBIA,
SOUTH CAROLINA

Flying time: 1 hour, 10 minutes
Breakfast will be served

9:45 am EDT THE FIRST LADY ARRIVES COLUMBIA MUNICIPAL AIRPORT,
FIRE STATION AREA, COLUMBIA, SOUTH CAROLINA

Open Press Coverage
Closed Arrival

The First Lady is greeted by:

- Governor and Mrs. Richard Riley
- Secretary of State John T. Campbell
- Attorney General Daniel R. McLeod
- State Treasurer Grady Patterson
- Adj. General T. Eston Marchant
- Speaker of the State House of Representatives Rex Carter
- State Senator Hyman Rubin
- State Senator Alex Sanders
- State Senator Nikki Setzler
- State Representative Jean Toal
- State Representative Marc Westbrook
- Jim Clyburn, State Commissioner of Human Affairs
- Candy Waits, Chair of Richland County Council
- Marcia Duffy, 2nd. Vice Chair, South Carolina Democratic Party
- Rick Wallace, Treasurer, South Carolina Democratic Party
- Joanne Montague, President, Democratic Women
- Reverend J. C. Whitaker, Democratic Executive Committeeman for Richland County
- C. D. Sexton, Democratic Executive Committeeman for Lexington County
- J. I. Washington, 1976 Carter/Mondale Committee
- Sam Tenebaum, Carter/Mondale Luncheon Chair
- Bob Clawson, Co-Chair, Carter/Mondale State Finance
- Joe Sapp, Co-Chair, Carter/Mondale State Finance
- Reverend I. DeQuincy Newman
- W. W. Johnson, Carter/Mondale State Finance member
- Mr. William Arvay
- Mrs. Cornelia Arvay

9:50 am EDT THE FIRST LADY PROCEEDS TO PRESS AREA FOR BRIEF COMMENTS
TO THE PRESS

Open Press Coverage

Press Facilities: Mult

9:55 am EDT THE FIRST LADY DEPARTS COLUMBIA MUNICIPAL AIRPORT
ENROUTE THE GOVERNOR'S MANSION

Press Follows

10:10 am EDT THE FIRST LADY ARRIVES THE GOVERNOR'S MANSION AND PROCEEDS INSIDE

Press Note: Press proceed to patio area to preposition

10:20 am EDT THE FIRST LADY ARRIVES PATIO AREA FOR RECEPTION

Open Press Coverage

Program Commences

Welcome by Don Fowler, Chairman of the South Carolina Democratic Party
Remarks by Governor Riley

FIRST LADY REMARKS

Press Facilities: Mult
Risers
30' throw

10:45 am EDT THE FIRST LADY DEPARTS GOVERNOR'S MANSION ENROUTE THE WILLIAM S. HALL PSYCHIATRIC INSTITUTE

Press Follows

10:55 am EDT THE FIRST LADY ARRIVES WILLIAM S. HALL PSYCHIATRIC INSTITUTE AND PROCEEDS ON TOUR

Press Note: Press proceed to auditorium to preposition

11:10 am EDT TOUR CONCLUDES. THE FIRST LADY ARRIVES FORUM AUDITORIUM FOR BOARD MEETING OF THE SOUTH CAROLINA MENTAL HEALTH ASSOCIATION

Open Press Coverage

Program Commences

Remarks by J. Leon Newton, President, Mental Health Association of South Carolina

FIRST LADY REMARKS

Remarks by John S. Hoar, Legislative Chair, South Carolina Mental Health Association

Press Facilities: Mult
Power
Lights
40' throw

11:40 am EDT THE FIRST LADY DEPARTS WILLIAM S. HALL INSTITUTE ENROUTE HOLIDAY INN CITY CENTER

Press Follows

11:50 am EDT THE FIRST LADY ARRIVES HOLIDAY INN CITY CENTER AND PROCEEDS PROCEEDS INSIDE FOR PERSONAL/STAFF TIME

Press Note: Press proceed to Wilson Room to preposition

12:00 pm EDT THE FIRST LADY ARRIVES WILSON ROOM FOR FUNDRAISING LUNCHEON HOSTED BY CARTER/MONDALE PRESIDENTIAL COMMITTEE

Open Press Coverage

Press Facilities: Mult
Risers
Power
Lights
35' throw

Program Commences

Invocation by Reverend David Landholt
Welcome by M.C. Don Fowler
Remarks by Evan Dobbelle, National Chairman, C/M Campaign
Remarks by Governor Riley

FIRST LADY REMARKS

12:20 pm EDT PROGRAM CONCLUDES. THE FIRST LADY GREETES GUESTS
AT THEIR TABLES

Press Note: 4 LD's available in
Executive Office for
press desiring to file

1:00 pm EDT THE FIRST LADY DEPARTS HOLIDAY INN ENROUTE COLUMBIA
MUNICIPAL AIRPORT

Press Follows

1:25 pm EDT THE FIRST LADY ARRIVES COLUMBIA MUNICIPAL AIRPORT,
BOARDS AIRCRAFT AND DEPARTS ENROUTE TAMPA, FLORIDA

Flying time: 1 hour, 10 minutes
Lunch will be served

2:35 pm EDT THE FIRST LADY ARRIVES TAMPA INTERNATIONAL AIRPORT,
TAMPA, FLORIDA

Open Press Coverage

The First Lady is greeted by:

Lt. Governor and Mrs. Wayne Mixson
Secretary of State George Firestone
Attorney General and Mrs. Jim Smith
Insurance Commissioner and Treasurer Bill Gunter
Commissioner of Agriculture Doyle Conner
Deputy Commissioner of Education and Mrs. Roger Nichols
State Representative and Mrs. Elvin Martinez
State Representative and Mrs. Lee Moffitt
State Representative Jim Foster
State Representative Carl Carpenter
Mr. and Mrs. Calvin Carter

2:40 pm EDT THE FIRST LADY PROCEEDS TO PRESS AREA FOR BRIEF COMMENTS
TO THE PRESS

Open Press Coverage

Press Facilities: Mult

2:45 pm EDT THE FIRST LADY DEPARTS TAMPA INTERNATIONAL AIRPORT ENROUTE
HOLIDAY INN DOWNTOWN

Press Follows

3:00 pm EDT THE FIRST LADY ARRIVES HOLIDAY INN DOWNTOWN AND PROCEEDS
TO RIVERFRONT ROOM FOR RECEPTION

Open Press Coverage

Program Commences

Welcome by Louis de la Parte, C/M Steering Committee Member
Remarks by Lt. Governor Mixson

FIRST LADY REMARKS

Press Facilities: Mult
Risers
Lights
Power
20' throw

3:10 pm EDT PROGRAM CONCLUDES. THE FIRST LADY PROCEEDS TO
GREET GUESTS

Press Note: 8 LD's available in
Hallway area

3:25 pm EDT THE FIRST LADY DEPARTS HOLIDAY INN ENROUTE TAMPA MUSEUM

Press Follows

3:30 pm EDT THE FIRST LADY ARRIVES TAMPA MUSEUM AND PROCEEDS INSIDE
TO VIEW INAUGURAL EXHIBIT

Brief Photo Session

3:35 pm EDT THE FIRST LADY ARRIVES OUTSIDE STAGE AREA FOR DEDICATION
AND OPENING OF THE TAMPA MUSEUM

Open Press Coverage

Program Commences

Remarks by Father Norman Balthazar, Chair, Arts Council
of Tampa
Invocation by Reverend Leon Lowry
Remarks by Mayor William Poe
Remarks by Secretary of State Firestone
Remarks by Governor Graham

FIRST LADY REMARKS

Press Facilities: Mult
Risers
20' throw

4:15 pm EDT THE FIRST LADY DEPARTS TAMPA MUSEUM ENROUTE CARTER
RESIDENCE

Press Pool #1 Accompanies

4:20 pm EDT Press bus departs Tampa Museum enroute
Tampa International Airport, Air Center
area

4:25 pm EDT THE FIRST LADY ARRIVES CARTER RESIDENCE AND PROCEEDS
INSIDE

Press Note: Press pool #1 proceeds
to foyer to preposition

Program Commences

Remarks by Calvin Carter

FIRST LADY REMARKS

Press Pool #1 Coverage

4:35 pm EDT Press bus arrives Tampa International Airport, press board press aircraft and depart enroute Orlando Airport

Flying time: 30 minutes

4:55 pm EDT THE FIRST LADY DEPARTS CARTER RESIDENCE ENROUTE TAMPA INTERNATIONAL AIRPORT

Press Pool #1 Accompanies

5:05 pm EDT Press aircraft arrives Orlando/Herndon airport

Press Facilities: 7 LD's inside Terminal bldg

5:25 pm EDT THE FIRST LADY ARRIVES TAMPA INTERNATIONAL AIRPORT, BOARDS AIRCRAFT AND DEPARTS ENROUTE ORLANDO, FLORIDA

Press Pool #1 Accompanies

Flying time: 30 minutes

5:55 pm EDT THE FIRST LADY ARRIVES HERNDON AIRPORT, ORLANDO, FLORIDA

Open Press Coverage

The First Lady is greeted by:

Mayor Carl Langford, Orlando
Alan Arthur, Chair, Orange County Commission
Alfredo Duran, Chair, State Democratic Party

6:00 pm EDT THE FIRST LADY PROCEEDS TO PODIUM

Open Press Coverage

Program Commences

Remarks by Governor Graham

FIRST LADY REMARKS

Press Facilities: Mult
Risers
40' throw

6:15 pm EDT THE FIRST LADY PROCEEDS TO PRESS AREA FOR BRIEF COMMENTS TO THE PRESS

Open Press Coverage

Press Facilities: Mult

6:20 pm EDT THE FIRST LADY DEPARTS HERNDON AIRPORT ENROUTE HANDY RESIDENCE

6:30 pm EDT THE FIRST LADY ARRIVES HANDY RESIDENCE FOR PERSONAL/STAFF TIME

6:40 pm EDT Press bus departs Herndon Airport enroute Sea World

7:10 pm EDT Press bus arrives Sea World

Press Facilities: Press Center
Information and
Operations Bldg,
10 LD's
Sandwiches and
drinks available

9/18/79

Paul:

RE: South Carolina Open House - Gov's Mansion

An advisory went out to editors that RSC was attending an open house at the Gov's mansion. It was printed in today's paper in SC, but as they are also sending out invitations, they don't expect thousands of general public there.

But if anyone comes by and wants in, they get in. It is a public function.

It is not taking place during the hours of a regular Mansion tour.

I'm afraid I don't know much more than that now.

Paula

THE WHITE HOUSE

WASHINGTON

September 17, 1979

TO: DAVID HOSTETTLER, SIGNAL BOARD
FROM: CARROLL ANN RAMBO *CAR*
RE: CONTACT NUMBERS FOR ADVANCE PERSONNEL
FOR TRIP OF THE FIRST LADY

Please update the list of Contact Numbers sent to you on the memo dated 9/15/79 to reflect the following information:

WEST PALM BEACH, FLORIDA

Advance staying at Holiday Inn Downtown in W.P.B.
305/655-8800

John Plaxco - lead advance - can be contacted at
Holiday Inn from 9/15 through 9/19

AFTER 9/19 through 9/21 can be reached at
the Helen Wilkes Hotel in W.P.B. at
305/832-8191

Linda Edmonds - press advance - contact numbers
and dates as same as John Plaxco

NOTE: HELEN WILKES HOTEL IN WEST PALM BEACH
305/832-8191 IS OVERNIGHT LOCATION
FOR THE FIRST LADY THE NIGHT OF 9/20/79.

Thank you.

TO: KIT, MARY, MADELINE, JANE, NANCY, PAUL, PAULA

FROM: CARROLL ANN *CA*

RE: FLORIDA CABINET ON MRS. CARTER'S TRIP

The following people will be meeting us at the airport in Tampa, Florida. This group will attend all the functions in Tampa, fly on our plane to Orlando, and attend all the functions in Orlando.

1. Governor Bob Graham
2. Garry Smith, aide to Governor Graham
3. Jim Baxley, Florida state trooper assigned to the Governor
4. Lt. Governor Wayne Mixson
5. Mrs. Wayne (Margie) Mixson
6. Attorney General Jim Smith
7. Mrs. Jim (Carole) Smith
8. Insurance Commissioner & Treasurer Bill Gunter
9. Mrs. Bill (Theresa) Gunter
10. Secretary of State George Firestone
11. Commissioner of Agriculture Doyle Conner
12. Deputy Commissioner of Education Roger Nichols
13. Mrs. Roger (Katie) Nichols

As far as thank you notes go: The Governor will ride with RSC in the car most of the time. He will introduce her at most of the functions.

Secretary of State Firestone will be on the program at the Museum dedication in Tampa.

All the other cabinet folks will merely be with us. They are not part of any of the programs, but will be introduced at the functions.

Thanks.

DATE: 9/11/79

RE: TRIP OF THE FIRST LADY TO BIRMINGHAM, ALABAMA 9/19/79

Will you please supply this office with the following information regarding advance personnel to be used for the above event. Please fill out a separate form for each advance person.

NAME Kate Steed - press advance

ADDRESS 42 Monument Avenue, Boston, Mass. 02129

X TELEPHONE NO. 617-242-5282 (h) (w)

FLIGHT INFO. Dpt. Boston, Mass early AM 9/14/79

Dpt. Birmingham, Ala. midmorning 9/20/79

DATES OF ADVANCE 9/14 thru 9/19. + 1/2 day 9/20

SALARY \$ 50.00 per day for 6 1/2 days

FOOD ALLOWANCE \$ 10.00 per day for 6 1/2 day(s)

CAR RENTAL NO ~~yes~~ needs authorization ~~will only rent car if it is necessary~~

TYPE CAR NEEDED 4-door sedan

HOTEL Plaza Hotel 205/933-9000

TYPE ACCOMMODATIONS Single room 9/14/79 thru 9/19/79

ESTIMATED AMT. OF DRAFT FOR INCIDENTAL EXPENSES \$

PLEASE COMMENT ON POSSIBLE SPECIAL EQUIPMENT OR EXTRAORDINARY EXPENSES:

~~Possible need to have vehicles for press for motorecade.~~

9/14 EA 149 7:20am Depart Boston

9:52am arrive Atl.

EA 283 @ 10:55 am depart Atl.

10:38 am arrive Birmingham

DATE: 9/11/79

called

RE: TRIP OF THE FIRST LADY TO BIRMINGHAM, ALABAMA 9/19/79

Will you please supply this office with the following information regarding advance personnel to be used for the above event. Please fill out a separate form for each advance person.

NAME Bobby Hatfield - Staff Advance

ADDRESS 600 Building, Rm. 807B. Corpus Christi, Texas 78473

TELEPHONE NO. 512-884-9231 (H) 512/854-5455 (H)

FLIGHT INFO. Dpt. Corpus Christi early AM 9/14/79

Dpt. Birmingham, Ala. midmorning 9/20

DATES OF ADVANCE 9/14/79 thru 9/19/79 + 1/2 day 9/20/79

SALARY \$ 50.00 per day for 6 1/2 days

FOOD ALLOWANCE \$ 10.00 per day for 6 1/2 day(s)

CAR RENTAL yes 9/14/79 thru 9/20/79

TYPE CAR NEEDED 4-door sedan

HOTEL Plaza Hotel 205/933-9000

TYPE ACCOMMODATIONS single room 9/14 thru 9/19

ESTIMATED AMT. OF DRAFT FOR INCIDENTAL EXPENSES \$

PLEASE COMMENT ON POSSIBLE SPECIAL EQUIPMENT OR EXTRAORDINARY EXPENSES:

Possible need for extra cars for motorcade.

9/14 EA 056 6:43am - Depart Corpus Christi, Tx

11:04 am - arrive Atl.

Delta 1707 12:52 pm depart Atl.

12:34 pm arrive Birmingham

visit listed special prints

CAR

COLUMBIA, SOUTH CAROLINA - NIGHT OF 9/19/79

Please make reservations for a block of rooms for Mrs. Carter's traveling party for the night of 9/19/79 at the Holiday Inn City Center 803/799-7800. → *Willie*

We will need to block 20 rooms (which does not include those needed by the Secret Service who will make their own reservations). These room should all be single rooms.

We will notify the Holiday Inn City Center as soon as we can of the name of each occupant of each room.

However, the following people will tentatively be manifested on the trip and will take rooms from this block of 20:

MARY HOYT
PAUL COSTELLO
CARROLL ANN RAMBO
WHITE HOUSE PHOTOGRAPHER (traveling in official capacity, not at expense of C/M Committee)
Additional 16 rooms are for traveling press

Thank you.

Ed Craig at the demo. party
799-7798
P. McKimley
Press 758-7100

DATE: 9/11/79

RE: TRIP OF THE FIRST LADY TO COLUMBIA, SOUTH CAROLINA 9/19-9/20

Will you please supply this office with the following information regarding advance personnel to be used for the above event. Please fill out a separate form for each advance person.

NAME Lisa Strasburg - press advance

X ADDRESS 4713 Windom Place NW, Washington DC 20016

X TELEPHONE NO. 202-363-0688 (h) (w)

FLIGHT INFO. Dpt. Wash, DC early am 9/15

Dpt. Columbia, S.C. after 4:00 pm 9/20

DATES OF ADVANCE 9/15 thru 9/20/79

SALARY \$ 50.00 per day for 6 days.

FOOD ALLOWANCE \$ 10.00 per day for 6 day(s)

CAR RENTAL yes 9/15 thru 9/20

TYPE CAR NEEDED 4-door sedan

HOTEL Holiday Inn City Center 803/799-7800

TYPE ACCOMMODATIONS single room

ESTIMATED AMT. OF DRAFT FOR INCIDENTAL EXPENSES \$

PLEASE COMMENT ON POSSIBLE SPECIAL EQUIPMENT OR EXTRAORDINARY EXPENSES:

Possible need for additional vehicles for press for motorcade.

Multiple horizontal lines for additional comments or notes.

FROM: SCHEDULING OFFICE

DATE: 9/11/79

RE: TRIP OF THE FIRST LADY TO COLUMBIA, SOUTH CAROLINA 9/19-9/20/79

Will you please supply this office with the following information regarding advance personnel to be used for the above event. Please fill out a separate form for each advance person.

NAME KATIE VARNEY - staff advance

ADDRESS 307 - 31st Ave. North, Apt. 5, Nashville, Tennessee. 37203

TELEPHONE NO. 615-298-2800 (h) 615/741-3056-3074 (w)

FLIGHT INFO. Dpt. Nashville, Tenn. early AM 9/15

Dpt. Columbia, S.C. after 4:00 pm 9/20

DATES OF ADVANCE 9/15/79 thru 9/20/79

SALARY \$ 50.00 per day for 6 days

FOOD ALLOWANCE \$ 10.00 per day for 6 day(s)

CAR RENTAL NO thru

TYPE CAR NEEDED

HOTEL Holiday Inn City Center 803/799-7800

TYPE ACCOMMODATIONS single room

ESTIMATED AMT. OF DRAFT FOR INCIDENTAL EXPENSES \$

PLEASE COMMENT ON POSSIBLE SPECIAL EQUIPMENT OR EXTRAORDINARY EXPENSES:

Multiple horizontal lines for providing comments on special equipment or extraordinary expenses.

DATE: 9/11/79

RE: TRIP OF THE FIRST LADY TO COLUMBIA, SOUTH CAROLINA 9/19/79 - 9/20/79

Will you please supply this office with the following information regarding advance personnel to be used for the above event. Please fill out a separate form for each advance person.

NAME Susan Watkins - staff advance

ADDRESS 312 Colonial Circle, Jackson, Mississippi 39206

TELEPHONE NO. 601/956-7229 (h) ~~601/956-8107~~ (w)

FLIGHT INFO. Dpt. Jackson, Miss. early AM 9/14/79

Dpt. Columbia, S.C. after 4:00 pm 9/20

DATES OF ADVANCE 9/14/79 thru 9/20/79

SALARY \$ 50.00 per day for 7 days

FOOD ALLOWANCE \$ 10.00 per day for 7 day(s)

CAR RENTAL yes 9/1 /79 thru 9/20/79

TYPE CAR NEEDED 4-door sedan

HOTEL Holiday Inn City Center 803/799-7800

TYPE ACCOMMODATIONS single room

ESTIMATED AMT. OF DRAFT FOR INCIDENTAL EXPENSES \$

PLEASE COMMENT ON POSSIBLE SPECIAL EQUIPMENT OR EXTRAORDINARY EXPENSES:

Possible need to rent additional vehicles for motorcade.

FROM: SCHEDULING OFFICE

DATE: September 13, 1979

RE: First Lady's trip to Tampa, Fl. - Press Advance

Will you please supply this office with the following information regarding advance personnel to be used for the above event. Please fill out a separate form for each advance person.

NAME Sam Meyers

ADDRESS 57 Leisure Drive Kirksville, Mo. 63501

TELEPHONE NO. 816-665-9485 (h) 816-665-5222 (w)

FLIGHT INFO. Trans. Mo. #119 Departs Kirksville, 9/16/79 5:05 pm
arrive STL 6:10pm Depart STL EA #97 7:10 pm arrive Tampa 10:13 pm

DATES OF ADVANCE 9/16/79 thru 9/20/79

SALARY \$ 50.00 per day for 5 days

FOOD ALLOWANCE \$ 10.00 per day for 5 days day(s)

CAR RENTAL Avis 9/16 thru 9/20

TYPE CAR NEEDED 4 door sedan

HOTEL Holiday Inn Downtown

TYPE ACCOMMODATIONS single room

ESTIMATED AMT. OF DRAFT FOR INCIDENTAL EXPENSES \$ _____

PLEASE COMMENT ON POSSIBLE SPECIAL EQUIPMENT OR EXTRAORDINARY EXPENSES:

~~SECRET~~

DATE: 9/11/79

RE: TRIP OF THE FIRST LADY TO ORLANDO, FLORIDA 9/20/79

Will you please supply this office with the following information regarding advance personnel to be used for the above event. Please fill out a separate form for each advance person.

NAME RICK JASCULCA - press advance

ADDRESS 238 Franklin, River Forest, Illinois 60305

X TELEPHONE NO. 312-771-2689 (h) 312-828-9360 (w)

FLIGHT INFO. Dpt. Chicago, Ill. early am 9/15/79

Dpt. Orlando, Fla. midmorning 9/21/79

DATES OF ADVANCE 9/15/79 thru 9/20/79 + 1/2 day 9/21/79

SALARY \$ 50.00 per day for 6 1/2 days

FOOD ALLOWANCE \$ 10.00 per day for 6 1/2 day(s)

CAR RENTAL yes 9/15/79 thru 9/21/79

TYPE CAR NEEDED 4-door sedan

X HOTEL Airport Holiday Inn

TYPE ACCOMMODATIONS single room

ESTIMATED AMT. OF DRAFT FOR INCIDENTAL EXPENSES \$

PLEASE COMMENT ON POSSIBLE SPECIAL EQUIPMENT OR EXTRAORDINARY EXPENSES:

Possible need for rental of additional vehicles for press for motorcade

FROM: SCHEDULING OFFICE

DATE: 9/11/79

Callen RD

RE: TRIP OF THE FIRST LADY TO ORLANDO, FLORIDA 9/20/79

Will you please supply this office with the following information regarding advance personnel to be used for the above event. Please fill out a separate form for each advance person.

NAME WALT COLLINS - staff advance

ADDRESS 600 Building, Room 807B, Corpus Christi, Texas 78473

TELEPHONE NO. 512-654-9308 (h) 512/884-9231 (w)

FLIGHT INFO. Dpt. Corpus Christi early am 9/14/79

Dpt. Orlando, Fla. midmorning 9/21/79

DATES OF ADVANCE 9/14/79 thru 9/20/79 + 1/2 day 9/21/79

SALARY \$ 50.00 per day for 9 1/2 days

FOOD ALLOWANCE \$ 10.00 per day for 9 1/2 day(s)

CAR RENTAL Yes 9/14/79 thru 9/21/79

TYPE CAR NEEDED 4-door sedan

X HOTEL Airport Holiday Inn 305-859-7900

TYPE ACCOMMODATIONS single room

ESTIMATED AMT. OF DRAFT FOR INCIDENTAL EXPENSES \$ _____

PLEASE COMMENT ON POSSIBLE SPECIAL EQUIPMENT OR EXTRAORDINARY EXPENSES:

Possible need for additional vehicles for motorcade.

WEST PALM BEACH, FLORIDA - NIGHT OF 9/20/79

Please make reservations for a block of room for Mrs. Carter and her traveling party for the night of 9/19/79 at the

~~West Palm Beach Sheraton Inn 305/689-6100.~~

*Helen Wilkes Hotel
201 North Flagler Drive*

We will need 2 rooms that adjoin (with connecting door) for *305-832-8191*

MRS. CARTER and MADELINE MacBEAN. In Addition to Mrs. Carter's accomodations, we will need a block of 20 rooms (which does not include those needed by the Secret Service who will make their own reservations). These rooms should all be single rooms.

We will notify the W. Palm Beach Sheraton Inn as soon as we can of the names of each occupant of each room.

However, the following people will tentatively be manifested on the trip and will take rooms from this block of 20:

MARY HOYT
CARROLL ANN RAMBO
PAUL COSTELLO
WHITE HOUSE PHOTOGRAPHER (traveling in official capacity, not at expense of C/M Committee)
Additional 16 rooms are for traveling press.

Thank you.

FROM: SCHEDULING OFFICE

DATE: 9/11/79

RE: TRIP OF THE FIRST LADY TO WEST PALM BEACH, FLORIDA 9/20 - 9/21/79

Will you please supply this office with the following information regarding advance personnel to be used for the above event. Please fill out a separate form for each advance person.

NAME LINDA EDMONDS - press advance

ADDRESS 1701 - 16th Street, NW Apt. 714, Washington, D.C.

TELEPHONE NO. 202/667-4442 (h) (w)

FLIGHT INFO. Dpt. Wash DC early am 9/16

Dpt. West Palm Beach after 2:00 pm 9/21

DATES OF ADVANCE 9/16 thru 9/21/79

SALARY \$ 50.00 per day for 6 days

FOOD ALLOWANCE \$ 10.00 per day for 6 day(s)

CAR RENTAL NO thru

TYPE CAR NEEDED

HOTEL ~~West Palm Beach Sheraton Inn 305/689-6100~~ Helen Wilkes Hotel 305-832-8191

TYPE ACCOMMODATIONS single room

ESTIMATED AMT. OF DRAFT FOR INCIDENTAL EXPENSES \$

PLEASE COMMENT ON POSSIBLE SPECIAL EQUIPMENT OR EXTRAORDINARY EXPENSES:

Possible need for rental of additional vehicles for press for motorcade.

Blank lines for additional comments or notes.

FROM: SCHEDULING OFFICE

DATE: 9/11/79

RE: TRIP OF THE FIRST LADY TO WEST PALM BEACH, FLORIDA 9/20 - 9/21/79

Will you please supply this office with the following information regarding advance personnel to be used for the above event. Please fill out a separate form for each advance person.

NAME John Plaxco - staff advance

ADDRESS 537 Irving Drive, Burbank, California 91504

TELEPHONE NO. _____ (h) _____ (w)

FLIGHT INFO. Dpt. Wash, DC early am 9/15/79

Dpt. W. Palm Beach en route Wash, D.C. after 2:00 pm 9/21/79

DATES OF ADVANCE 9/15/79 thru 9/21/79

SALARY \$ 50.00 per day for 8 days

FOOD ALLOWANCE \$ 10.00 per day for 7 day(s)

CAR RENTAL YES 9/15/79 thru 9/21/79

TYPE CAR NEEDED 4-door sedan

HOTEL ~~West Palm Beach Sheraton Inn 305/689-6100~~ Helen Wilkes Hotel 305-832-8191

TYPE ACCOMMODATIONS single room

ESTIMATED AMT. OF DRAFT FOR INCIDENTAL EXPENSES \$ _____

PLEASE COMMENT ON POSSIBLE SPECIAL EQUIPMENT OR EXTRAORDINARY EXPENSES:

Possible need for additional vehicle rental for motorcade.

FROM: SCHEDULING OFFICE

OFFICIAL/POLITICAL

82
RB

DATE: 9/11/79

RE: TRIP OF THE FIRST LADY TO TAMPA, FLORIDA 9/20/79

Will you please supply this office with the following information regarding advance personnel to be used for the above event. Please fill out a separate form for each advance person.

NAME RUTH BERRY

ADDRESS 1681 - 35th Street, N.W. Washington, D.C. 20007

TELEPHONE NO. 202.965-3523 (h) _____ (w) _____

FLIGHT INFO. Dpt. Wash DC ^{after 4pm} ~~early AM~~ 9/14/79 2

Dpt. Tampa, Fla. after 7:00 pm 9/20

DATES OF ADVANCE 9/14/79 thru 9/20/79

SALARY \$ 50.00 per day for 7 days

FOOD ALLOWANCE \$ 10.00 per day for 7 day(s)

CAR RENTAL YES 9/14/79 thru 9/20/79

TYPE CAR NEEDED 4-door sedan

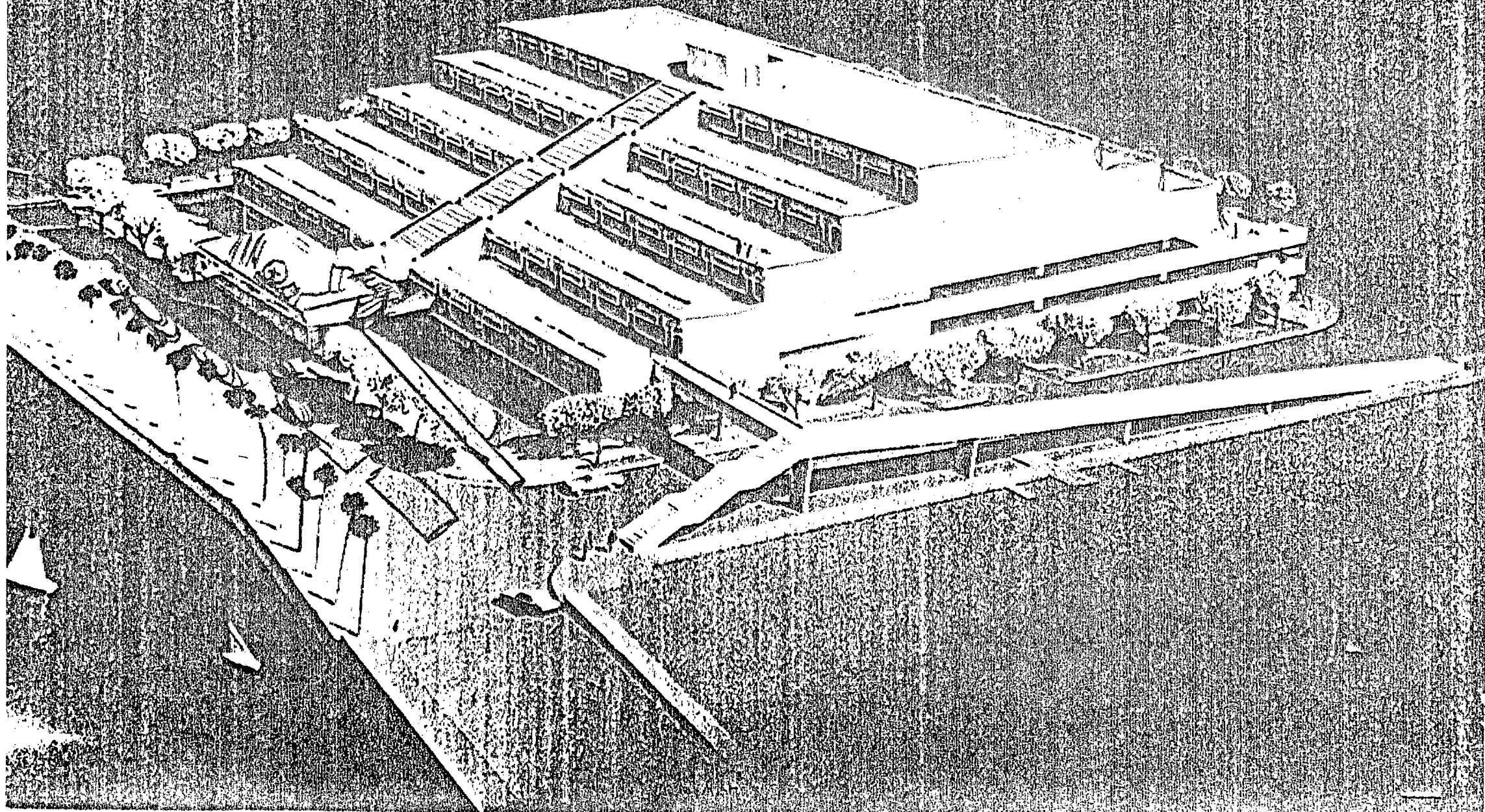
HOTEL HOLIDAY INN ~~on Cyprus in Tampa~~ Downtown

TYPE ACCOMMODATIONS single room

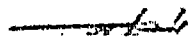
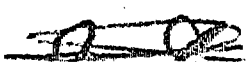
ESTIMATED AMT. OF DRAFT FOR INCIDENTAL EXPENSES \$ _____

PLEASE COMMENT ON POSSIBLE SPECIAL EQUIPMENT OR EXTRAORDINARY EXPENSES:

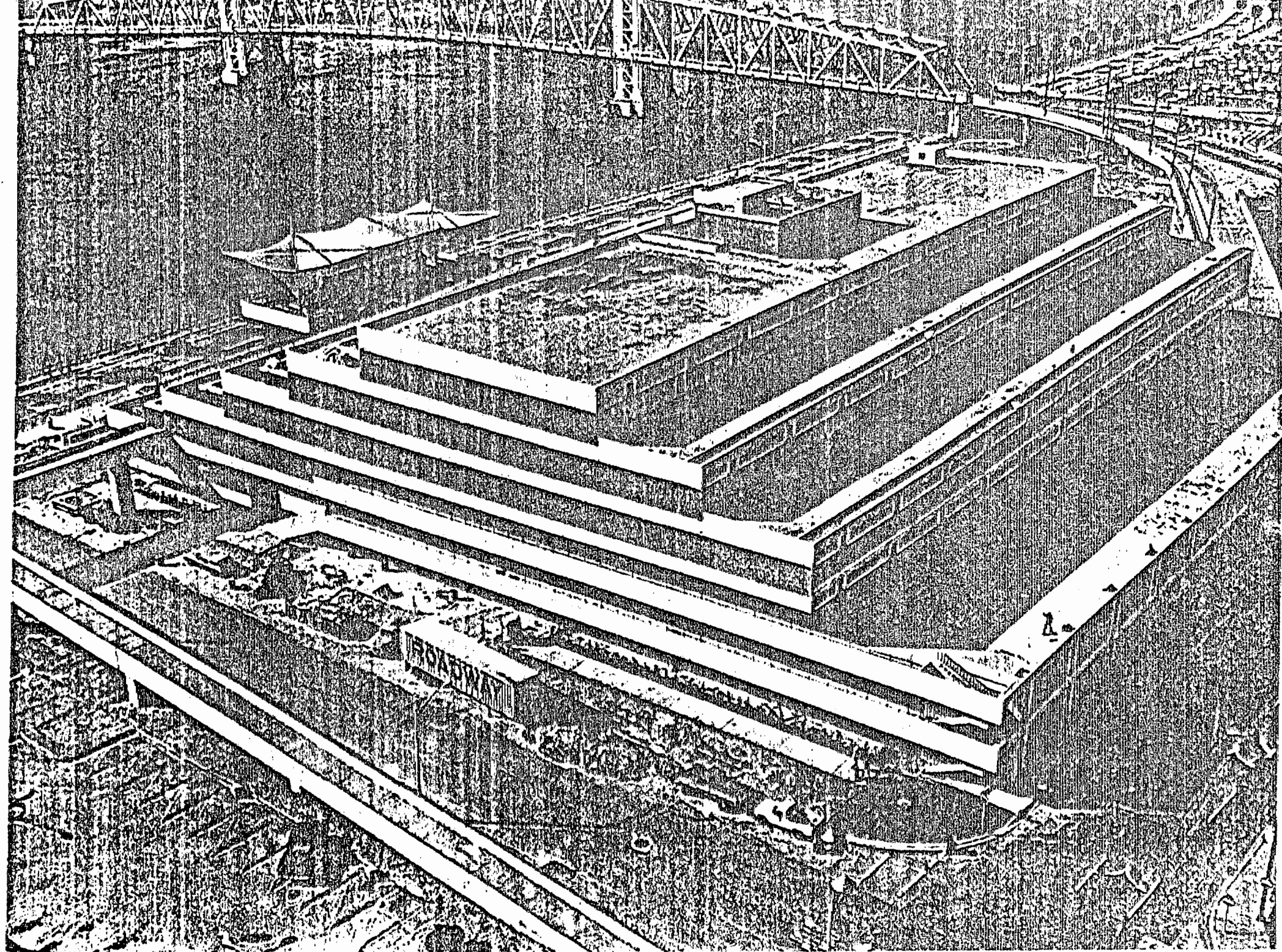
Possible need for additional vehicles for motorcade.



Plan 2014

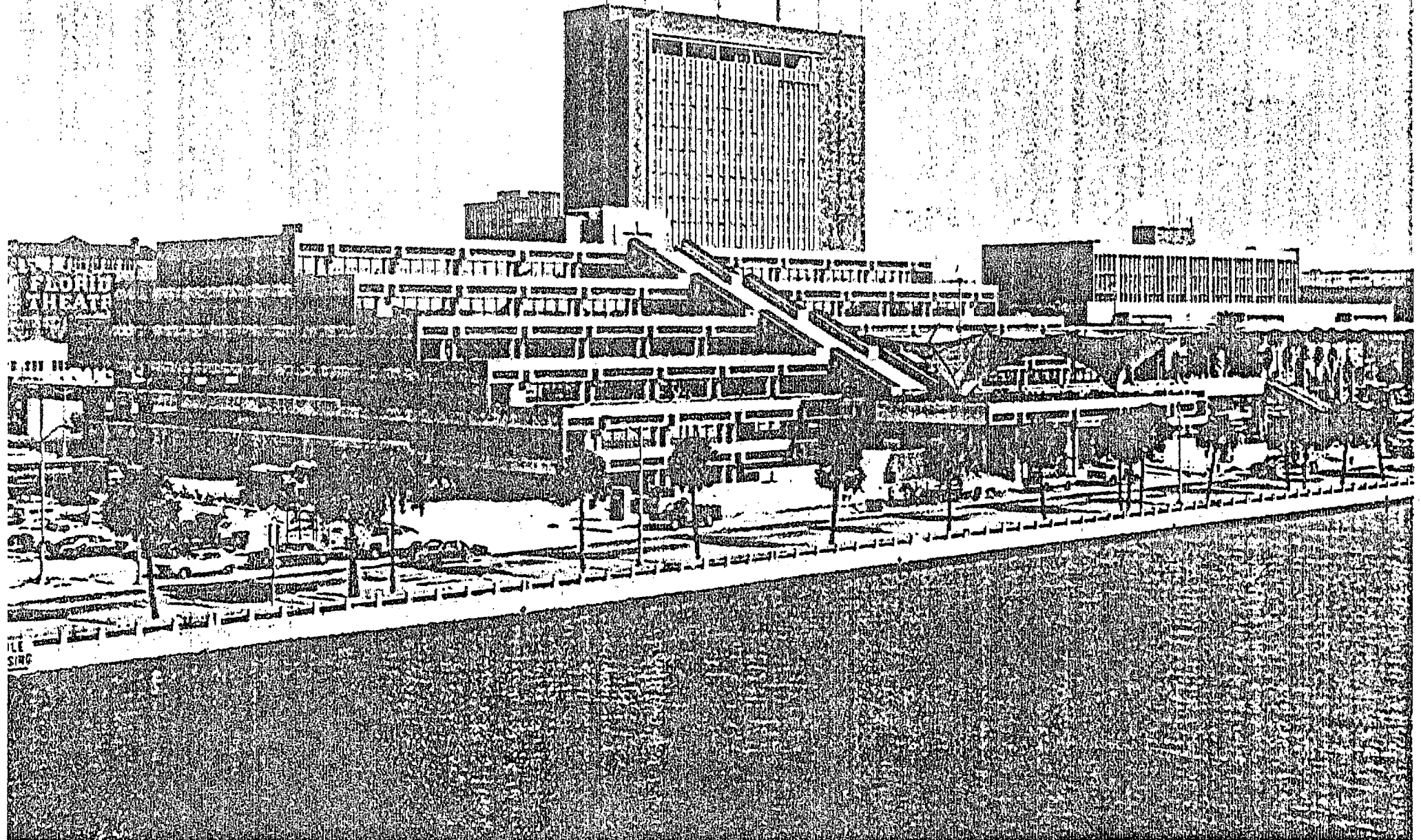


— South East Elevation



Page 4 of 4

Northwest
Elevation



CHARTER CONTACTS FIRST LADY PRESS CORPS

TURBO PROP CONVAIR (50 passenger)

MACKEY AIRLINES (FT.LAUDERDALE)

CHARTER: Jim Reynolds Ofc. 305-525-7336
Res. 305-472-8213

or Jack Tracy in charters

DISPATCHER: 24 hrs. 305-462-6630

MIAMI OPTNS: 305-940-1874

Price 2,221.34 includes 8% tax

Sept.20/79 (thur.) Tampa to Orlando

rough operating times 4P spot 5P depart 5:30PM
arrive Orlando

THE WHITE HOUSE
WASHINGTON

Moody Int. Airline

~~50~~ passenger -
50

Captain # 2,221.34

~~Exc~~ adons.

Turbo prop ^{50 passenger}

\$ 85.00

Tail #

Tail #

~~900WC~~
900WC

based on 38. passengers -

Jack Tracy -
Jim Reynolds -
2512221.34

305-525-2901

Rose Spring 404-658-1951

Press Buses - Greyhound -

Columbia - 2 vans - (15 passenger vans)

Tampa - 3 vans -

Orlando - 1 greyhound 4:00 pm -
Herndon / main terminal -

West Palm Beach - 1 greyhound - 9:30
Administrative Bldg
Bldg S-120
at the side gate -

Jacksonville - 1 greyhound -