

Originally Processed With FOIA(s):

S

FOIA Number:

S

FOIA MARKER

This is not a textual record. This is used as an administrative marker by the George Bush Presidential Library Staff.

Record Group/Collection: George H.W. Bush Presidential Records
Collection/Office of Origin: Speechwriting, White House Office of
Series: Speech File Backup Files
Subseries: Chron File, 1989-1993

OA/ID Number: 13780
Folder ID Number: 13780-012

Folder Title:
Bond Fundraiser 11/13/91 [OA 8317] [2]

Stack:	Row:	Section:	Shelf:	Position:
G	26	21	7	5

PRE-ADVANCE/WALK-THRU QUESTIONNAIRE

EVENT: Senator Kit Bond Fundraiser

DATE: November 13

TIME: 4:00 to 9:30; Pres speaks at 6:35

LOCATION:
(GIVE DETAILS) Riverport Amphitheater
St. Louis, MO

EXPECTED AUDIENCE:
(NUMBER AND COMPOSITION) 3,500 to 4,000 people
From all over state of MO
Donors, band, volunteers

PRESS COVERAGE: Open

~~Stage:~~
DIAS PARTICIPANTS: Sen. Danforth, Sen Bond, Gov. Ashcroft,
Bucky Bush (Tom Fowler, Chuck Knight)

**EXPECTED PARTICIPATION BY MEMBERS OF
CABINET/CONGRESSIONAL/ADMINISTRATION:** Sen. Danforth,
Sen. Bond, Gov. Ashcroft, Bucky Bush

POTUS INTRODUCTION: Sen. Bond.

PERTINENT SPEECH TOPICS: — "We need more Republicans" start
"Vote them in!"

REASON FOR EVENT: — Pol'l Fundraiser for Bond

PLEASE ATTACH PRE-ADVANCE/WALK-THRU CALL SHEET

SENATOR KIT BOND FUNDRAISER

November 13

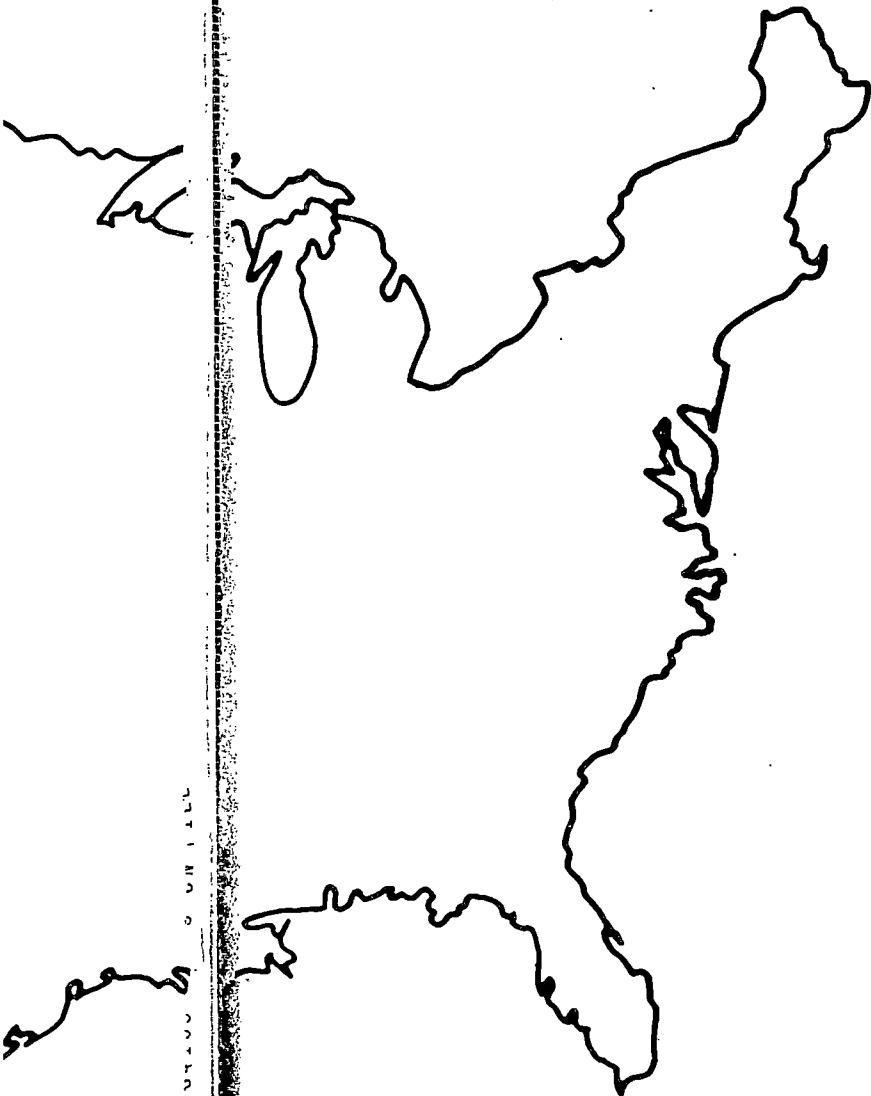
St. Louis, MO

Riverport Amphitheater

- Photo op with 100 people
Expected audience: 3,500 to 4,000 people
- The amphitheater opened in June. It is a covered, outdoor theater.
- On stage: Senators Danforth and Bond, Governor Ashcroft, and Bucky Bush -- maybe Tom Fowler, Missouri GOP Chairman, and Chuck Knight, event chairman.
- The banner behind the podium will say "Kit Bond, U.S. Senator from Missouri." (undecided)
- Ashcroft will have brief remarks; Danforth will intro video; a video of about 8 minutes will play that pays tribute to Senator Bond's senatorial service. Bond will give a 1-minute thank you and intro Pres.; Pres gives 5 to 7 minute remarks on cards.
- After Pres speaks, the Gatlin Brothers will immediately begin playing. The details are not resolved, but Larry Gatlin might come around the curtain after the Pres finishes and thank him and kick up the band. Or a sequence like: Pres finishes, podium goes out, curtain goes up, banner goes up, and Gatlin Bros. play.

AMERICA THE QUOTABLE

*Mike Edelhart and
James Tinen*



Facts On File Publications
460 Park Avenue South
New York, N.Y. 10016

unt of the Mississippi
1, on this so renowned
features I have endeav-
lississippi River takes its
country of the northern
e place where Miskous
lows southward, is slow
large chain of very high
are beautiful lands; in
s divided by islands. On
ses of water. Its width is
t is three-quarters of a
arrows to three arpents.
ttle, bustards, and swans
y drop their plumage in
o time, we came upon
ch struck our boat with
it was a great tree, about
s. On another occasion,
ster with the head of a
hat of a wildcat, with
ears."

Father Marquette
Jesuit Relations
17th century

the nation as a highway,
been a road to opportu-
and the law; an interna-
ing force. It still remains
"back East" and "out

Perry T. Rathbone
Mississippi Panorama
1950

issippi was a presence, a
ities, tear away bridges,
ideal lives. Living on the
g under a volcano. For
s that fact hasn't changed.
orces are now those that
e factory that moves in or
ay; wars in distant places;
ations that may hit home
n the distance but often in
not even be conceived."

Peter Schrag
Saturday Review
Dec. 12, 1970

was born about 1812; at
grown to mighty propor-

tions; and in less than 30 more it was dead! A
strangely short life for so majestic a creature."

Mark Twain
Life on the Mississippi
1874

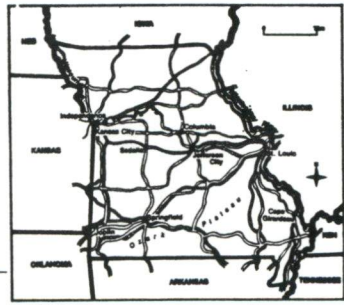
"When I was a boy [mid-18th century], there was
but one permanent ambition among my comrades in
our village on the west bank of the Mississippi River.
That was, to be a steamboatman. We had transient
ambitions of other sorts, but they were only trans-
sient. When a circus came and went, it left us all
burning to become clowns; the first Negro minstrel
show that ever came to our section left us all suffer-
ing to try that kind of life; now and then we had a
hope that, if we lived and were good, God would
permit us to be pirates. These ambitions faded out,
each in its turn; but the ambition to be a steamboat-
man always remained."

Mark Twain
Life on the Mississippi
1874

"The Mississippi was left unvisited by whites during
a term of years which seems incredible in our ener-
getic days. One may 'sense' the interval to his mind,
after a fashion, by dividing it up in this way: after
DeSoto [first European explorer] glimpsed the river,
a fraction short of a quarter of a century elapsed, and
then Shakespeare was born; lived a trifle more than
half a century, then died; and when he had been in
his grave considerably more than half a century, the
second white man saw the Mississippi. In our day we
don't allow 130 years to elapse between glimpses of
a marvel."

Mark Twain
Life on the Mississippi
1874

MISSOURI



Capital: Jefferson City
Became a territory: June 4, 1812

Entered the union (with rank): Aug. 10, 1821 (24)
State motto: *Sallus populi suprema lex esto* (The
welfare of the people shall be the supreme law)
State flower: Hawthorn
State bird: Bluebird
State song: "Missouri Waltz"
State tree: Dogwood
Nickname: Show Me State
Origin of state name: Named after Missouri Indians,
who lived there; the tribal name means "town of
the large canoes"

Missouri got its nickname when Congressman Wil-
liard D. "Doubting Williard" Vandiver said to an
Iowa representative during heated debate: "I'm from
Missouri. You'll have to show me."

The Show Me State has actually shown the country
a good deal. Mark Twain showed Americans how
laughable and wise they were. Harry Truman showed
them how a president was supposed to act. At the
same time, it is perfectly true that Missourians by
and large are a stubborn lot. They don't change
easily; they don't cotton to fads. They really do
demand to be shown before they accept new ideas.

Missouri's entrance into the Union, in fact, forced
the country to face up to hard questions it had been
studiously avoiding for some time. When Missouri
came aboard in 1820, the clash over slave and free
states boiled over, resulting in the slapdash Missouri
Compromise—which let Missouri become a slave
state but banned slavery elsewhere in the upper
Louisiana Purchase area. This allowed the national
schizophrenia to devolve onto the state, which felt
southern but had a decidedly northern economy. An
embattled government managed to get the state se-
ceded by 1861, but another administration hauled it
back into the Union in 1864. Some of the state's
skepticism may grow from its early life as a political
pinball.

Missouri is divided into a northwestern prairie and
a Mississippi flatland by the rugged, but gorgeous,
Ozark Mountains. The Missouri prairies were, in the
1850s, America's launching point for trips westward
toward the promised lands of Oregon and California.
The banks of the Mississippi became a place of
riverboat towns and mercantile depots for the bus-
tling river trade. Today, along the river in St. Louis,
the magnificent Jefferson National Expansion Mem-
orial Arch, designed by Eero Saarinen, serves as a
soaring symbol of the state's gateway status.

Today Missouri's automotive industry is second
only to Michigan's. Kansas City is a major meat
processing center. McDonnell-Douglas has impor-
tant aerospace facilities outside of St. Louis.

THE STATE

"This state [Missouri] is a melange of peoples, occupations and resources. It would be difficult to pinpoint it, except to say that, in general, it is southern."

Pearl S. Buck
America
1971

* * *

"Missouri is the abolitionist North with its belief in equal rights for all men and women. It is the plantation South with its old ideas of a leisure society. It is the industrial East, busy, noisy, mechanical, commercial. It is the grazing West, miles and miles of pasture and prize livestock in every direction."

Irving Dilliard
I'm From Missouri
1952

* * *

"Illinois may have a richer soil and a more prosperous people; Iowa may have a better organized community life; and Kansas, a quicker sense of civic responsibility and political opportunity. But Missouri doesn't want to hear about it. Missourians are satisfied with here, and she is satisfied with herself. Besides, who can say that Arkansas excels her in anything?"

Manley O. Hudson
These United States
1924

* * *

"I come from a state that raises corn and cotton and cockleburs and Democrats, and frothy eloquence neither convinces nor satisfies me. I am from Missouri. You have got to show me."

Williard Vandiver, congressman
Speech in Philadelphia
1899

PEOPLE

[Obituary of Kansas City man who killed himself three months after moving to New York]: "He hated New York. He wanted to come home."

Kansas City Star
1966

WAY OF LIFE

"He [Vice-President Harry Truman] talked about friends I should call on, who were the apple of his eye. 'They're ornery, mean folk!' he chuckled.

"They're against everybody but themselves!' I asked Mr. Truman what they were for. 'Missouri!' "

John Gunther
Inside USA
1947

* * *

"Missouri would lose something if the Civil War were ever entirely settled."

Kansas City Star
Quoted by John Gunther
Inside USA
1947

* * *

"That peppery, independent spirit, not entirely foreign to the ornery mules who helped make Missouri famous, has surfaced again and again in Missouri history, recent decades not excepted."

Neal R. Peirce
The Great Plains States of America
1973

CITIES, TOWNS
AND REGIONS

Kansas City

"People in Kansas City are tormented by the fact that they live here . . . 'Kansas City' sounds so bad. It commends itself to a nasal tone of voice."

Giles Fowler, Kansas City drama critic
Quoted by Richard Rhodes
The Inland Ground
1970

* * *

"Busy, boasting, and Babbitt-ful, Kansas City holds a key position in the American system of interstate commerce. . . . It has life but it lacks character."

Manley G. Hudson
These United States
1924

* * *

"Kansas City stands at the eastern edge of the wheat belt, at the western edge of the corn belt, and at the northern limit of the white belt. This is not a racial remark. I am talking about the white belt, which men in Kansas City have taken to wearing with red pants."

Charles Kuralt
Dateline America
1979

* * *

"Who in Europe, or in America for that matter, knows that Kansas City is one of the loveliest cities on earth?"

Andre Maurois
Journal of his stay in Kansas City
1946

* * *

"There are no more Babbitts in Kansas City than in New York."

Andre Maurois
Journal of his stay in Kansas City
1946

* * *

"Some say that Kansas City is still a lazy city, happier with cookouts on the patio than with intellectual stimulation."

Richard Rhodes
The Inland Ground
1970

* * *

"Kansas City has a certain complex about being the gizzard of America."

Richard Rhodes
The Inland Ground
1970

* * *

[On a 'miracle cure']: "I will admit that these waters have quite a peculiar odor as they have a proportion of Sulphur and other unknown ingredients, but visitors from Kansas City, who are used to a Stock Yard breeze, take this wonderful water home as a Perfume."

Will Rogers
The Illiterate Digest
1924

* * *

"Of course it's not just a cow town. It's not a cow town at all. The stockyards are all but gone, just like Chicago and all the other places with cow town image problems. Kansas City's a grain town."

Kansas City woman at dinner party
Quoted by Tom Stites
New York Times
Nov. 14, 1981

* * *

"The future looks rosy [in Kansas City]. Detroit and Youngstown seem on another planet. There is little chance that the city's [agrarian-centered] economy will be devastated because Americans develop a preference for Japanese bread."

Tom Stites
New York Times
Nov. 14, 1981

* * *

"Since [cowtown days,] various self-appointed coroners have declared Kansas City dead just from its past reputation, then from being in a location remote from the two coasts, where every good and perfect thing must be; to some it seemed for years to be dead of an overdose of civic righteousness and business conservatism."

Tracy Thomas and Walt Bodine
Right Here in River City
1976

* * *

"Kansas City has suffered from being ignored coast to coast—from being immaterial to any discussion of anything. Like a Russian politician who falls from grace and becomes a nonperson, Kansas City has really suffered from being a nonplace."

Tracy Thomas and Walt Bodine
Right Here in River City
1976

* * *

"But more likely, if you leave Kansas City in despair, it will not be because you ran into a wall of repression or a flame of resentment. It will be because you shouted and shouted and there wasn't much coming back to you but an echo. The audience is not sullenly unresponsive. It sits out there and looks pleasant enough. But it doesn't really do anything pro or con. It does the most damnable thing of all to the rabble-rouser; it regards him or her as interesting. Some call it apathy; some call it Midwestern conservatism. But Kansas Citians call it a very healthy kind of live-and-let-live spirit."

Tracy Thomas and Walt Bodine
Right Here in River City
1976

* * *

"The truth is that Kansas City nationally for many years had the pale image of a great-aunt; not much known about her, and no great urgency about finding out. Today the young are more likely to be interested in what Great-Auntie was like, and to be delighted if they find out she was quite a magnificent old party with just a touch of indiscretion in her past—and a certain free and open style in her manner."

Tracy Thomas and Walt Bodine
Right Here in River City
1976

* * *

"Kansas City has been counted out time after time. In its earliest years, it was counted out as a presump-

tuous upstart by the much more promising cities of Independence, St. Joseph, Leavenworth, and Atchison. Later it had to survive outbreaks of cholera and being torn apart by the Civil War—the very rope itself in a life-and-death tug o’war. Later it was written off as a wild, rude cattle town whose idea of culture was a piano in a warehouse.”

Tracy Thomas and Walt Bodine
Right Here in River City
1976

St. Louis

“The abuses which are daily creeping in through the unruly conduct of the slaves at this post of St. Louis, owing to the criminal tolerance in some masters who are so careless of their authority and of public welfare—in which they ought to feel an interest, as members of the same body—oblige us, notwithstanding the orders previously published on this subject, again to prohibit the slaves, under penalty of 50 lashes of the whip, to hold any assembly at night, in the cabins or elsewhere, and they will incur a more severe punishment according to the result of their said assemblies.”

Don Francisco Cruzat
General Ordinances for St. Louis
1781

* * *

“It [St. Louis] serves Missouri chiefly as a sieve for Eastern money and Eastern manners. . . . It once had a Fair which made it great, and the laurel has been borne in slumber these 20 years since. . . . It forms no part of Missouri. Even the postal clerks know it as St. Louis, U.S.A.”

Manley O. Hudson
These United States
1924

* * *

“Only from the air can today’s traveler fully understand the tremendous power of the site of St. Louis, which Twain saw as ‘a great and prosperous and advancing city. . . .’ From the west the Missouri snakes in, a mud-laden watercourse that rises 2,533 miles upstream in far-off Montana and brings together the waters of tributaries that drain the northeastern slopes of the Rockies and the northern Great Plains. From the east comes the Illinois River bearing the commerce of Chicago and the industrial cities of the Illinois hinterland, giving access to the Great Lakes and ultimately to the Atlantic Ocean via the St. Lawrence Seaway.”

Bern Keating
The Mighty Mississippi
1971

* * *

“The jet fighter, rocket, and spacecraft, not the towboat, have replaced the steamboat as the glamour craft of St. Louis.”

Bern Keating
The Mighty Mississippi
1971

* * *

“Towboats bring far more tonnage to St. Louis than the steamboats ever did, pushing up to 40 steel barges lashed together in a five-acre platform, but they tie up at docks so scattered that many of the 2,500,000 people of metropolitan St. Louis scarcely know a river runs by their door.”

Bern Keating
The Mighty Mississippi
1971

* * *

“On Saturday evenings the street life is as animated as that of an [sic] European city. In the populous quarters the Irish and Germans throng the sidewalks, marketing and amusing themselves until midnight; and in the fashionable sections the ladies, seated in porches and on the front doorsteps of their mansions, receive the visits of their friends. . . . At the more aristocratic and elegant of the German beer gardens, such as “Uhrig’s” and “Schneider’s” the representatives of many prominent American families may be seen on the concert evenings, drinking the amber fluid, and listening to the music of Strauss, of Gungl, or Meyerbeer. Groups of elegantly dressed ladies and gentlemen resort to the gardens in the same manner as do the denizens of Dresden and Berlin, and no longer regard the custom as a dangerous German innovation. The German element in St. Louis is powerful and has for the last 30 years been merging in [sic] the American, giving to it many of the hearty features and graces of European life, which have been emphatically rejected by the native population of the more austere Eastern states.”

Edward King
Scribner’s Monthly
July, 1874

* * *

“I have found a situation where I intend establishing a settlement which in the future, shall become one of the most beautiful cities in the world.”

Pierre Laclède, French fur trapper
Written upon discovery of the site of St. Louis
1763

* * *

“Even the gleaming Arch can be part of a very disturbing experience in St. Louis today. It is possible to ride one of the eerie half-train, half-elevator

capsules that creep up inside to the top, where one can peer through windows to the terrain below, there is the silt-laden beyond it the industrial no Louis. To the west, there new and old civic buildings panses of uninspired urban

The Great

* * *

“Even the most callous of zero below the Arch [ir upward to see its flanks l sun and then following v cutting lines of the great delicate, perfect juncture must be awed by what ha

The Great

* * *

“St. Louis . . . is still not her German ancestry, plus often led to complacency.

The Great

* * *

[View from Gateway Arch against the glass, one could being could reasonably be mile of biscuit-colored h streets, blackened Victorian plish urban scar tissue of ground. It was The Waste

* * *

[The base of the Gateway though, had been coated green slime. Its texture purpose quite inscrutable have recognized it as the nutrient. My own guess wa had run out of funds, was artificial hill, and had decible solution was to spray cheapest and nastiest green coating might at least decengers in high-altitude jet the impression that the very

capsules that creep up inside the legs of the Archway to the top, where one can peer out through narrow slit windows to the terrain below. To the east, directly below, there is the silt-laden Mississippi, and just beyond it the industrial nothingsville called East St. Louis. To the west, there is the sprinkling of fine new and old civic buildings—but then the vast expanses of uninspired urban terrain.”

Neal R. Peirce
The Great Plains States of America
1973

* * *

“Even the most callous observer, standing at ground zero below the Arch [in St. Louis] and looking upward to see its flanks brushed diagonally by the sun and then following with the eye as the clear, cutting lines of the great arms soar upward to a delicate, perfect juncture at an apex so far above, must be awed by what has been wrought.”

Neal R. Peirce
The Great Plains States of America
1973

* * *

“St. Louis . . . is still not exactly a swinging town; her German ancestry, plus wealth and maturity, have often led to complacency.”

Neal R. Peirce
The Great Plains States of America
1973

* * *

[View from Gateway Arch]: “Pushing one’s face against the glass, one could see all that any human being could reasonably bear of St. Louis: mile after mile of biscuit-colored housing projects, torn up streets, blackened Victorian factories and the purplish urban scar tissue of vacant lots and pits in the ground. It was The Waste Land.”

Jonathan Raban
Old Glory
1981

* * *

[The base of the Gateway Arch]: “Most of the mud, though, had been coated with some kind of bilious green slime. Its texture was thickly fungoid, its purpose quite inscrutable. A gardener might well have recognized it as the best and latest form of soil nutrient. My own guess was that the city of St. Louis had run out of funds, was unable to plant grass on its artificial hill, and had decided that the only affordable solution was to spray the whole thing with the cheapest and nastiest green paint it could find. The coating might at least deceive a few inattentive passengers in high-altitude jets. At ground level, it gave the impression that the very earth on which St. Louis

had been built was grotesquely diseased.”

Jonathan Raban
Old Glory
1981

* * *

“Old, genteel St. Louis—T.S. Eliot’s city—thought of itself as a slice of cultivated Europe. It seemed mystified as to how it had landed here, stranded on the wrong side of the big American river.”

Jonathan Raban
Old Glory
1981

* * *

“It [the Gateway Arch] recalls most specifically a woman’s legs and pelvis.”

Richard Rhodes
The Inland Ground
1970

* * *

“It is good business that causes bad government in St. Louis.”

A district attorney, speaking in 1902
Quoted by William Shannon
American Heritage
June, 1969

* * *

“Go to St. Louis and you will find the habit of civic pride in them; they still boast. The visitor is told of the wealth of the residents, of the financial strength of the banks, and of the growing importance of the industries, yet he sees poorly paved, refuse-burdened streets, and dusty or mud-covered alleys; he passes a ramshackle firetrap crowded with the sick, and learns that it is the City Hospital; he enters the “Four Courts” and his nostrils are greeted by the odor of formaldehyde used as a disinfectant, and insect powder spread to destroy vermin; he calls at the new City Hall, and find half the entrance boarded with pine planks to cover up the unfinished interior. Finally, he turns a tap in the hotel, to see liquid mud flow into wash-basin or bathtub.”

Lincoln Steffens and Claude H. Wetmore
McClure’s Magazine
October, 1902

* * *

“The corruption of St. Louis came from the top. . . . Taking but slight and always selfish interest in the public councils, the big men misused politics. The riffraff, catching the smell of corruption, rushed into the Municipal Assembly, drove out the remaining respectable men, and sold the city—its streets, its

wharves, its markets, and all that it had—to the now greedy businessmen and bribers.”

Lincoln Steffens and Claude H. Wetmore
McClure's Magazine
October, 1902

* * *

[A grand jury's report on St. Louis's Municipal Assembly]: “Our investigation, covering more or less fully a period of 10 years, shows that, with few exceptions, no ordinance has been passed wherein valuable privileges or franchises are granted until those interested have paid the legislators the money demanded for action in the particular case.”

Quoted by Lincoln Steffens and Claude H. Wetmore
McClure's Magazine
October, 1902

* * *

“St. Louis is a great and prosperous and advancing city; but the river-edge of it seems dead past resurrection.”

Mark Twain
Life on the Mississippi
1874

* * *

[On returning to St. Louis after absence]: “The city seemed but little changed. It was greatly changed, but it did not seem so; because in St. Louis, as in London and Pittsburgh, you can't persuade a new thing to look new; the coal smoke turns it into an antiquity the moment you take your hand off it.”

Mark Twain
Life on the Mississippi
1874

* * *

[Huck Finn, Mark Twain's fictional character]: “The fifth night we passed St. Louis, and it was like the whole world lit up. In St. Petersburg they used to say there was 20,000 or 30,000 people in St. Louis, but I never believed it till I saw that wonderful spread of lights at two o'clock that still night. There wasn't a sound there; everybody was asleep.”

Mark Twain
Huckleberry Finn
1885

* * *

“The appearance of St. Louis was not calculated to make a favorable impression upon the first visit, with its long dirty and quicksand beach, numbers of long, empty keelboats tied to stakes driven in the sand, squads of idle boatmen passing to and fro, here and there numbers pitching quoits; others running foot

races, rough and tumble fights; and shooting at a target was one of their occupations while in port.”

James Healey White
Early Days in St. Louis
1819

Other Cities, Towns and Regions

Hannibal:

“In 1884, Twain described Huck Finn as ‘the pariah of the village.’ Poor Huck. He had made horribly good. A hundred years later, he was Hannibal's darling.”

Jonathan Raban
Old Glory
1981

Independence:

“Independence, Missouri, the ‘jumping-off place’ to the Wild West. Now it is a suburb of Kansas City; then, it was the last outpost of civilization.”

Cecil Dryden
Give All To Oregon
1968

* * *

“The town could not then have been more Midwestern as my adolescence meant the word, rural and shaded and slow, withdrawn behind closed windows and cautious minds.”

Richard Rhodes
The Inland Ground
1970

The Ozarks:

“Under the Ozarks, domed by Iron Mountain, The old gods of the rain lie wrapped in pools.”

Hart Crane
The Bridge
1930

Springfield:

“The Paris and Gomorrah of the Ozarks.”

H.L. Mencken
Heathen Days
1943

* * *

“One seems to reach the bottom [in race relations] at Springfield, Missouri, which is a county seat with a college, an academy, a high school, and a zoological

garden. There the exen nadir. Last April three burned to death, appare groes, and as a general They seem to have bee offense. It was a sort of

MONTANA



Capital: Helena
Became a territory: M
Entered the union (wit
State motto: *Oro y pl*
State flower: Bitterroo
State bird: Western m
State song: “Montana
State tree: Ponderosa)
Nicknames: Land of t
Origin of state name:
nary by J.M. Ashley

The sky really does see Ferber once claimed in is so vast it seems to 1 with the sky sweepin directions. Montana af of the sheer vastness o other state. In a belt r edge of the state the sp reinforce the sense of 1

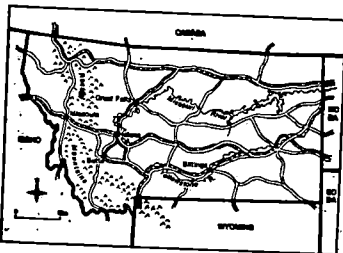
In this enormous n activities are, fittingly, dry land farming spr barley, wheat and suga sits on the so-called riel lode that once supplie mining remains an imp

Once some of the 1 America's Indian war 1876 the harassed ar

garden. There the exemplary method reaches the nadir. Last April three unfortunate Negroes were burned to death, apparently because they were Negroes, and as a general corrective of impertinence. They seem to have been innocent of any particular offense. It was a sort of racial sacrament."

H.G. Wells
"The Future in America"
1906

MONTANA



Capital: Helena
Became a territory: May 26, 1864
Entered the union (with rank): Nov. 8, 1889
State motto: *Oro y plata* (Gold and silver)
State flower: Bitterroot
State bird: Western meadowlark
State song: "Montana"
State tree: Ponderosa pine
Nicknames: Land of the Big Sky, Treasure State.
Origin of state name: Chosen from a Latin dictionary by J.M. Ashley

The sky really does seem bigger in Montana, as Edna Ferber once claimed in her novels. The state's plain is so vast it seems to reveal the curve of the earth, with the sky sweeping round the horizons in all directions. Montana affords a greater sense of space, of the sheer vastness of the land's expanse than any other state. In a belt running along the far western edge of the state the spines of the Rocky Mountains reinforce the sense of omnipresent nature.

In this enormous natural expanse the principal activities are, fittingly, tied to the land. Ranching and dry land farming spread across the plains, with barley, wheat and sugar beets the major crops. Butte sits on the so-called richest hill in the world, a copper lode that once supplied half the U.S. production; mining remains an important activity in Montana.

Once some of the most infamous encounters of America's Indian wars raged across Montana. In 1876 the harassed and infuriated Cheyenne and

Sioux managed to trap George C. Custer and his troops at Little Big Horn. The death of Custer and some 200 soldiers at this last stand represented the final important triumph by the Indians against the U.S. Army.

Montana was, and remains, the genuine American West in all aspects of its life and work.

THE STATE

"Montana has a spell on me. It is grandeur and warmth. If Montana had a seacoast, or if I could live away from the sea, I would instantly move there and petition for admission. Of all the states it is my favorite and my love."

John Steinbeck
Travels with Charley
1962

"Montana is a great splash of grandeur."

John Steinbeck
Travels with Charley
1962

"...this 'entity,' this 'thing,' this 'place' called Montana has been cyclically beaten, battered, and bruised. It has often been misgoverned, exploited, lied to, and lied about. It has suffered as 'an outpost of feudal journalism'—the only state in the nation without an essentially free press. It has been visited by awesome drought, withering poverty, and genuine suppression of civil rights, riots, and lynchings. (It has been notable for legislative incompetence of lowest order, corporate arrogance of the highest order, corruptions, and cynicism.) Now (in the 1970's), in the midst of the most affluent period in the history of America, we have shared in that affluence only marginally, and there is abundant evidence that even that share will diminish."

K. Ross Toole
Twentieth-Century Montana
1972

THE LANDSCAPE

"In some respects, Montana, among all the states remains the closest to basic nature."

Pearl S. Buck
America
1971

and shooting at a
s while in port."
nes Healey White
Days in St. Louis
1819

nd Regions

inn as 'the pariah
id made horribly
was Hannibal's

Jonathan Raban
Old Glory
1981

ing-off place' to
of Kansas City;
ization."

Cecil Dryden
He All To Oregon
1968

more Midwest-
word, rural and
closed windows

Richard Rhodes
Inland Ground
1970

Mountain,
l in pools."
Hart Crane
The Bridge
1930

arks."
H.L. Mencken
Heathen Days
1943

ice relations] at
nty seat with a
nd a zoological



City/State: St. Louis, MO
 Event: Sen. Bond / MO GOP
 Date: NOV. 13, 1991

OFFICE OF PRESIDENTIAL ADVANCE
 CONTACT SHEET

Steve Schankman Riverport (314) 962-4000 (221)
 Andy Foster WH Political (202) 456-6510

Name Office Phone Number
 Presidential Advance Office 202/456-7565
 Presidential Advance Fax Number 202/456-2820

McL LUKENS WH Advance 202-456-7565

Kris Goodwin " "

Bobby Carr WH Press

Michele Vix WH Speechwriting 202-456-7750

BRUCE BOWEN SECRET SERVICE PRES. PROT. 202/395-4011

Philip Ley Secret Service - STL 314/539-2238

KENT L. SINCOX SECRET SERVICE - STL 314 539 2238

Bart Cross Contemporary Productions 314 962-4000

Ann Wagner State Party - Jeff City 314 636-3146

Sgt Rex Gooch TRAFFIC DIV, MARYLAND HTS P.D. 314 298-8700

Chief Neil Kurlander MARYLAND HTS Police Dept 314 298 8705

→ ANNIE PRESLEY DIR OF FINANCE, MKB 314-849-5544

Bob Simmonds PREWING/TRAFFIC MGMT-RIVERPORT 436-7600 home 965-2526

Taish Vincent State Party - Jeff City 314 635-0545 (H)
 314 636-3146 (H)

ROSE ARMSTRONG Republican Nat'l Cmte 202-863-8710 (H)
 Assisting State Party 816-468-7740 (H)

STEVEN FINKEL GENERAL MANAGER RIVERPORT 314 947 9342 H
 314-298-9944 O

SUNIL SINHA PRODUCTION MANAGER RIVERPORT 314 962 -4000 O
 314 940 -7973 H

LINDY SCHROEDER THEATRE MGR 314 298 -9944 W
 314 481 -4388 H

Steven Spiegel Pattonville EPD Fire/EMS 314 739-3118 W
 314 968-3172 H

CHIP SMACK MEDCOR / ON SITE MEDICAL 314-938-5300 EXT 210 READER 841-1216
 314-938-4817 EXT 2
 314-257-5659
 314-938-5505

~~GREG LIGHT~~ MEDCOR / ON SITE MEDICAL

MITCH ROSS WHITE HOUSE COMMUNICATIONS 202-757-5430

Gordon Koch White House Communications 202-395-4012

WAYNE JUSTICE MILITARY OFFICE/COAST GUARD AIDE TO PRESIDENT 202 395 1747

TONY HAMMOND MISSOURI REPUBLICAN PARTY 314-636-3146 (O) 636-6438 (H)
 787-774-5771 (O) 202-537

→ WARREN K. ERDMAN SEN. KIT BOND

CELEBRATE AMERICA TENTATIVE SCHEDULE

4:00 pm. Doors open. Celebrity Dinner entertainment begins

4:30 Scheduled start of Celebrity Dinner

5:00 Call to order; Dinner is served

5:30 Address and Show only guests arrive

Warm-up entertainment begins in Amphitheatre

6:00 Dinner Program begins

- Introduction of VIPs and Celebrities
- CSB Remarks
- Instructions

6:15 MKB/MRP Photo people to Backstage
MRP dessert reception people to canopy

6:20 rest of Celebrity Dinner people to Amphitheatre

6:00 President arrives Riverport Amphitheatre. Proceeds to MKB/MRP photo session

~~6:05~~ ~~6:25~~ Photo Session concludes. President proceeds to MRP Dessert/Reception

~~6:57~~ President arrives MRP Dessert

~~7:00~~ President proceeds to holding room

~~7:09~~ President introduced

~~7:10~~ Hail to the Chief

6:45 Pre-program begins in Amphitheatre

- MC Welcome
- Recognition of VIPs and Celebrities
- Ashcroft
- Danforth

6:57 MKB Video presentation

7:05 Intro CSB, CSB Remarks and Introduction of President

~~7:10 Hail to the Chief~~

Times unconfirmed

~~6:35~~

~~7:12~~

Presidential Remarks

7:30

Presidential Remarks conclude

Balloon Drop

President departs Riverport Amphitheatre

Intermission

7:50

Gatlin Brothers Show begins

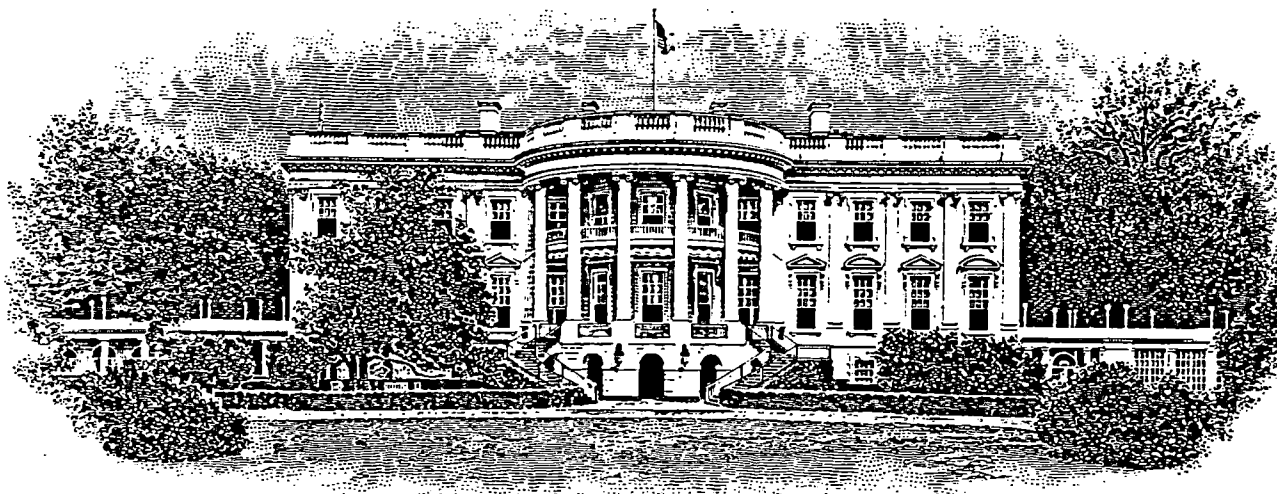
9:30

Show concludes; CSB Thanks and Farewell

*Pres could
stay for
Gatlin Bros.*

THE WHITE HOUSE

WASHINGTON



FACSIMILE TRANSMITTAL SHEET

DATE 11/1/91
TO DAVID AYRES
FAX NUMBER 224 7491
OFFICE NUMBER _____
NUMBER OF PAGES INCLUDING COVER 2

DEPARTMENT OF COMMUNICATIONS

FROM J. G. ROSSMAN
COMMENTS _____
THANKS!!

OFFICE NUMBER 456 7750

fax 456 6218

- Gambler
- Bond Kit
- Bond
- Baseball Jokes
- St. Louis Cardinals

1998

1999

2000

2001

2002

(Smith/Grossman)
Draft Three
November 6, 1991
BOND

PRESIDENTIAL REMARKS: BOND FUNDRAISER
ST. LOUIS, MISSOURI
WEDNESDAY, NOV. 13, 1991

Senator Danforth -- thank you for being a tower of strength.
// Secretary of State Roy Blunt, Attorney General Bill Webster,
State Treasurer Wendall Bailey. // Ozzie Smith, that baseball
acrobat. // No. 6, Stan "The Man" Musial. // Hall of Fame
announcer Jack Buck and his colleague, Bob Costas. // My brother,
Bucky Bush, and cousin, Bert Walker. // Talk about all in the
family. // Governor Ashcroft, whom I forgive for declaring
broccoli the new state vegetable. Most of all, our next
Governor, Kit Bond. //

Thank you for that introduction, and the chance to be back
in the city where my mother was born and raised. // My favorite
mystic, St. Louis' Yogi Bera, once said of a restaurant, "Nobody
goes there anymore. It's too crowded." / I am pleased to see
this capacity crowd. //

My remarks will be brief. ((You've heard a lot about term
limits. // Congress limits a President's terms. It's time
Congress limited its own terms. // Term limits don't apply to
the length of speeches, but I'm going to keep these remarks
short, anyway.)) //

((Driving from the airport, someone was telling me they miss
having an NFL franchise in St. Louis. // I said -- as an Oilers

fan, I know what I'm talking about: "Look at the bright side -- you don't have to lose to the Redskins this year."))

Tonight, the bright side lights this ampitheatre. // For instance, later you'll be hearing from the Gatlin Brothers. // I'd rather be a Republican listening to the voice of a great country group, than a Democrat facing the music at the polls. / Yet we're here to honor an even brighter star: The next Governor of the State of Missouri. //

Kit Bond's going to prove that even someone who went to Princeton can be a magnificent Governor. He's already been a superb Senator -- just as he's excelled at every stop in the road. / Raised in Mexico, Missouri. / Law school graduate of the University of Virginia. // Assistant Attorney General for the Consumer Protection Division -- named, incidentally, by Jack Danforth. // Kit then became State Auditor / then, at 33, your Governor -- the youngest Governor in Missouri history / then, finally, Junior Senator. // ((I haven't even mentioned his role as campaign chairman for Bush-Quayle '88.)) //

There's an old saying, "What goes around, comes around. // In 1986, Kit Bond went to the United States Senate. The time has now come for him to come back to Columbia. // I say that because Kit has a record to build upon -- not rhetoric to run upon. / We hear a lot of hot air from the other party, but it won't sell in Missouri. The motto here is Show-Me -- not Snow-Me. //

Kit Bond will be a great Governor because he knows what America needs. ((No, not just the fishing he loves on the Lake

of the Ozarks)) -- and certainly not the tired old thinking by the committees / subcommittees / and alleged "leaders" of Congress. Rather, America needs the new thinking which believes in growth / opportunity / and progress. // It's no accident those initials are GOP. //

Liberal Democrats in Congress don't trust people to run America. Republicans -- on the other hand -- know how one-party control of Congress can ruin America. // That is why our agenda differs from the Democrats'. It rests on one word // freedom // the freedom to unchain America // the freedom to create and grow. // Federal red tape can turn initiative black and blue. So we have used the first letter of "GOP" -- growth initiatives - - to enlarge personal dignity -- not impersonal government. //

To our west are towns like __ and __, and cities whose horizons stretch upward to the sky. To the south are the hardscrabble hills of the Ozarks. // Think of the people who live there -- good people / quiet, decent people. They don't want government to make decisions for them. They want government to help them make decisions for themselves. //

As Senator, Kit Bond has backed our growth initiatives to help ease their credit crunch: Banking reform, personal savings incentives, creating an R&D tax credit, and more investment in science, technology, and infrastructure. // He has endorsed Enterprise Zones to create new jobs, and incentives to turn tenants into homeowners. He supports our committee under Dan Quayle to cut the regulatory burden on American business. //

I wish I could tell you Congress has done the people's business by passing these initiatives. I also wish I could tell you the Tooth Fairy is real. Sadly, liberals refused even to permit a vote on our capital gains tax cut to propel the economy. / Their agenda is to sabotage America's agenda. So far they've succeeded -- which makes it imperative that in 1992 they fail. //

Those who wring their hands about Congress-bashing should pay more attention to how Congressional inaction is bashing America. // How can growth occur when the Senate won't even vote on important appointments to key economic positions? It can't - - not as long as the tired thinking of Tax and Spend prevails inside-the-Beltway. // ((You know, I can't be in St. Louis without thinking of the name, "Dizzy." // If you're talking baseball, it means a great pitcher. If you're talking politics, it describes a different Gas House Gang back on Capital Hill.))

This brings me to the second letter of "GOP" -- opportunity. // Our Administration wants to give every American an equal chance at the starting line -- so that each of us -- striving / hoping / creating/ dreaming -- can then decide the finish line.

((Kit Bond knows what I'm talking about. To him, each Missourian is precious. // Here's a story -- 1989, the State Fair. First, he flipped burgers with cattlemen. // Then, he took son Sam to look at animal exhibits. // ((Finally, they snuck off to the pork chop tent for a sandwich. There, Kit said to a man, "You look like Joe Jones from Cooper County." Shocked,

the man said, "Well, he's my cousin." // Bert likes that one. //
People matter to Kit Bond -- just as they do to us.) //

That is why we have launched a strategy to combat drugs --
and pushed through legislation to give parents increased access
to child care without creating a new bureaucracy. // Kit Bond
can tell you about that. He has supported these and other bills
to make America a better society. / Think of our legislation to
guarantee the rights of people with disabilities -- the Americans
With Disabilities Act -- or how we put together the Clean Air Act
to wisely use -- and preserve -- our natural resources. //

These things happened not because -- but despite -- liberals
in Congress. Thank God for Republicans, and the few moderates
left in the Democratic party. Recently, one of their candidates
said I have feet of clay. The problem is that too often liberals
in Congress have heads of clay. //

Unlike liberals, I believe America deserves the opportunity
to be free of crime. Last March 6, I challenged Congress to pass
a bill to take criminals off the street. I still don't have a
bill. // Let's elect a Congress more sympathetic to police than
to the criminals. //

Unlike liberals, I believe America's kids deserve the
opportunity to celebrate God in our classrooms. // Let's elect
a Congress which will pass a Constitutional Amendment restoring
voluntary prayer to American schools. //

Unlike liberals, I believe we need transportation
legislation the Congress has delayed for __ days. ((Kit Bond

knows how bad Missouri roads and bridges are. He told me he was surprised I could drive to this event -- and glad I don't have to cross the bridge to St. Charles.)) // Help me elect a Congress which will pass a bill to meet local needs -- not fill politicians' pockets. //

Finally, I believe that our kids deserve the opportunity for an education based on lessons taught -- not dollars spent. // Liberal Democrats want to improve education by pandering to special interests like the NEA. I ask you to help America's true interests -- our kids -- by electing men like Kit Bond who believe in more local control and more parental choice. //

Now, I admit I get impatient about these things. // ((Here's another story. I told John Sununu I'd like to deliver a speech called, "Keeping Pace with Rapidly-moving events." He said, "Do you really think an audience wants to hear what it's like to play 18 holes with you?" I said, "Sure, I like to do things quickly // and you can ignore that humor that I watch 60 Minutes in three-quarters of an hour.")) //

I think America needs a Congress which doesn't act like a 78 rpm record played on 33 -- a Congress, too, which recognizes that the world doesn't end at the water's edge. // You know who I'm referring to: Liberals who don't understand that foreign and domestic policy are more married than Bogart and Bacall. // Today, military, economic, and political issues cross continents, and borders. Help me achieve the third initial of "GOP": Progress for America, and the world.

When a dictator endangered the Western Hemisphere -- we helped the Panamanian people restore free elections by kicking him out. Secretary of State Ted Kennedy, was that foreign or domestic policy?

As Communism crumbled, we made it clear that America will support those who promote democracy and free enterprise -- and thank God we did. // If liberal Democrats had their way, the Berlin Wall would still be standing -- and liberty would still be drowning. // Senator of Defense George Mitchell, is democracy foreign policy or domestic policy?

When a brutal tyrant invaded Kuwait -- we helped roll back aggression and liberate a land. Tell me, Senator of Everything Howard Metzanbaum, was this victory foreign or domestic? Desert Storm made America a better place. I am proud of our troops: They made ours a better world. //

You must admit. Liberals are consistent / consistently wrong. How can America entrust its freedom to those who were prepared to compromise with Saddam Hussein? If the Democrats who voted against our use of force in the Gulf had had their way, we would by now have witnessed the completion of societal meltdown in Kuwait -- and the approach of a nuclear countdown in Iraq. //

Today, we need leaders who know how industry in Missouri is linked to trade in Singapore -- or how building war planes in St. Louis can help keep the peace. // Kit Bond is such a man. // He helped draft the 1990 Farm Bill, that has made America more competitive overseas. [[Later, he was asked how he got 23

provisions in the bill. "Simple," he said, "Missourians gave me the best ideas."]] // He led the successful fight to make the F/A-18 the Navy's carrier-based aircraft for the next decade. // ((Kit, as a Navy man, you've given me the idea of re-enlisting.))

Kit Bond believes in exports that work -- whether it is winter wheat or the sunshine of democracy. So do I. // Last year, I was in Columbia. Why? To help take drugs off our streets. // Last week, I was in Rome. Why? In part, to tell our allies: Free trade must be fair trade. // Ask anyone charged with leadership -- not the cheap shots of demagoguery. When I go abroad, it's to help America at home.

Almost half a century ago, Wendell Wilkie wrote best-selling book titled, "One World." Today, our world is smaller, our fate even more indivisible. // This is not the time for a New Isolationism -- or an Old Ignorance that Roosevelt, Truman, and Kennedy would have scorned. // I speak of the ignorance that we can divorce America from the rest of the world -- wishing our problems away instead of willing solutions. //

Our solutions begin with "GOP" -- growth, opportunity, and progress -- not merely initials for a party, but a future for this country. // Kit Bond's campaign proclaims, "Values we believe in, experience we trust." So let us use these values, and that leadership, to celebrate America -- and elect Kit Bond the next Governor of the great State of Missouri.

#

(Smith/Grossman)
Draft Three
November 6, 1991
BOND

PRESIDENTIAL REMARKS: BOND FUNDRAISER
ST. LOUIS, MISSOURI
WEDNESDAY, NOV. 13, 1991

Senator Danforth -- thank you for being a tower of strength.
// Secretary of State Roy Blunt, Attorney General Bill Webster,
State Treasurer Wendall Bailey. // Ozzie Smith, that baseball
acrobat. // No. 6, Stan "The Man" Musial. // Hall of Fame
announcer Jack Buck and his colleague, Bob Costas. // My brother,
Bucky Bush, and cousin, Bert Walker. // Talk about all in the
family. // Governor Ashcroft, whom I forgive for declaring
broccoli the new state vegetable. Most of all, ~~our next~~ ^{our next} *Gov. Ashcroft*
Governor, ~~Kit Bond.~~ *Gov. Ashcroft* // *Gov. Ashcroft*

Thank you for that introduction, and the chance to be back
in the city where my mother was born and raised. // My favorite
mystic, St. Louis' Yogi Bera, once said of a restaurant, "Nobody
goes there anymore. It's too crowded." / I am pleased to see
this capacity crowd. // *My hit see = [unclear] [unclear]*

My remarks will be brief. ((You've heard a lot about term
limits. // Congress limits a President's terms. It's time
Congress limited its own terms. // Term limits don't apply to
the length of speeches, but I'm going to keep these remarks
short, anyway.)) // *84*

((Driving from the airport, someone was telling me they miss
having an NFL franchise in St. Louis. // I said -- as an Oilers

fan, I know what I'm talking about: "Look at the bright side -- you don't have to lose to the Redskins this year."))

Tonight, the bright side lights this ampitheatre. // For instance, later you'll be hearing from the Gatlin Brothers. // I'd rather be a Republican listening to the voice of a great country group, than a Democrat facing the music at the polls. / Yet we're here to honor an even brighter star: The next Governor of the State of Missouri. //

Missouri Gov. Jim Sasser

Kit Bond's ~~going to~~ prove that even someone who went to Princeton can be a magnificent Governor. He's already been a superb Senator -- just as he's excelled at every stop in the road. / Raised in Mexico, Missouri. / Law school graduate of the University of Virginia. // Assistant Attorney General for the Consumer Protection Division -- named, incidentally, by Jack Danforth. // Kit then became State Auditor / then, at 33, your Governor -- the youngest Governor in Missouri history / then, finally, Junior Senator. // ((I haven't even mentioned his role as campaign chairman for Bush-Quayle '88.)) //

Do we really need all this stuff?

There's an old saying, "What goes around, comes around. // In 1986, Kit Bond went to the United States Senate. The time has now come for him to come back to Columbia. // I say that because Kit has a record to build upon -- not rhetoric to run upon. / We hear a lot of hot air from the other party, but it won't sell in Missouri. The motto here is Show-Me -- not Snow-Me. // ✓

Kit Bond will be a great Governor because he knows what America needs. ((No, not just the fishing he loves on the Lake

of the Ozarks)) -- and certainly not the tired old thinking by the committees / subcommittees / and alleged "leaders" of Congress. Rather, America needs the new thinking which believes in growth / opportunity / and progress. // It's no accident those initials are GOP. //

Liberal Democrats in Congress don't trust people to run America. Republicans -- on the other hand -- know how one-party control of Congress can ruin America. // That is why our agenda differs from the Democrats'. It rests on one word // freedom // the freedom to unchain America // the freedom to create and grow. // ~~Federal red tape can turn initiative black and blue.~~ *stretch*

So we have used the first letter of "GOP" -- growth initiatives - - to enlarge personal dignity -- not impersonal government. //

To our west are towns like Independence and Leansas City, and cities whose horizons ~~stretch~~ *stretch* upward to the sky. To the south are the hardscrabble hills of the Ozarks. // Think of the people who live there -- good people / quiet, decent people. They don't want government to make decisions for them. They want government to help them make decisions for themselves. //

As Senator, Kit Bond has backed our growth initiatives to help ease their credit crunch: Banking reform, personal savings incentives, creating an R&D tax credit, and more investment in science, technology, and infrastructure. // He has endorsed Enterprise Zones to create new jobs, and incentives to turn ^{public housing} tenants into homeowners. He supports our committee under Dan Quayle to cut the regulatory burden on American business. //

*Barb
Grove
Ford
in 50th*

251

I wish I could tell you Congress has done the people's business by passing these initiatives. I also wish I could tell you the Tooth Fairy is real. Sadly, liberals refused even to permit a vote on our capital gains tax cut to propel the economy. / Their agenda is to sabotage America's agenda. So far they've succeeded -- which makes it imperative that in 1992 they fail. //

Those who wring their hands about Congress-bashing should pay more attention to how Congressional inaction is bashing America. // How can growth occur when the Senate won't even vote on important appointments to key economic positions? It can't - - not as long as the tired thinking of Tax and Spend prevails inside-the-Beltway. // ((You know, I can't be in St. Louis without thinking of the name, "Dizzy." // If you're talking baseball, it means a great pitcher. If you're talking politics, it describes a different Gas House Gang back on Capital Hill.))

This brings me to the second letter of "GOP" -- opportunity. // Our Administration wants to give every American an equal chance at the starting line -- so that each of us -- striving / hoping / creating/ dreaming -- can then decide the finish line.

((Kit Bond knows what I'm talking about. To him, each Missourian is precious. // Here's a story -- 1989, the State Fair. First, he flipped burgers with cattlemen. // Then, he took son Sam to look at animal exhibits. // ((Finally, they snuck off to the pork chop tent for a sandwich. There, Kit said to a man, "You look like Joe Jones from Cooper County." Shocked,

*Kit Bond is a Republican
like "Dizzy" is a Democrat
but I couldn't think of any
other acronym
like "Dizzy" here
or "too long" for
what was going
to spell out
letters of
Democrat
and
Republican*

the man said, "Well, he's my cousin." // Bert likes that one. // ✓
 People matter to Kit Bond -- just as they do to us.) //

That is why we have launched a strategy to combat drugs -- and pushed through legislation to give parents increased access to child care without creating a new bureaucracy. // Kit Bond can tell you about that. He has supported these and other bills to make America a better society. / Think of our legislation to guarantee the rights of people with disabilities -- the Americans With Disabilities Act -- or how we put together the Clean Air Act to wisely use -- and preserve -- our natural resources. //

These things happened not because -- but despite -- liberals in Congress. Thank God for Republicans, and the few moderates left in the Democratic party. Recently, one of their candidates said I have feet of clay. The problem is that too often liberals in Congress have heads of clay. // → stupid but funny it's so dumb

Unlike liberals, I believe America deserves the opportunity to be free of crime. Last March 6, I challenged Congress to pass a bill to take criminals off the street. I still don't have a bill. // Let's elect a Congress more sympathetic to police than to the criminals. // that handcuff the criminals not law officers.

~~Unlike liberals, I believe America's kids deserve the opportunity to celebrate God in our classrooms. // Let's elect a Congress which will pass a Constitutional Amendment restoring voluntary prayer to American schools. //~~

Unlike liberals, I believe we need transportation legislation the Congress has delayed for __ days. ((Kit Bond

knows how bad Missouri roads and bridges are. He told me he was surprised I could drive to this event -- and glad I don't have to cross the bridge to St. Charles.)) // Help me elect a Congress which will pass a bill to meet local needs -- not fill

politicians' pockets. // Kit knows that if we want to keep America on the rise, we must keep her on the move.

Finally, I believe that our kids deserve the opportunity for an education ^{focused} based on lessons ^{learned} taught -- not dollars spent. //

Liberal Democrats want to improve education by pandering to special interests like the NEA. I ask you to help America's

true interests -- our kids -- by electing men like Kit Bond who'll help shift power & choice out of the heavy hand of the state, & into the hands of the parents. // hands that

Now, I admit I get impatient about these things. // ~~the home & raise the~~

~~((Here's another story. I told John Sununu I'd like to deliver a family speech called, "Keeping Pace with Rapidly-moving events." He said, "Do you really think an audience wants to hear what it's like to play 18 holes with you?" I said, "Sure, I like to do things quickly // and you can ignore that humor that I watch 60 Minutes in three-quarters of an hour.")) //~~

I think America needs a Congress which doesn't act like a 78 rpm record played on 33 -- a Congress, too, which recognizes that the world doesn't end at the water's edge. // You know who I'm referring to: Liberals who don't understand that foreign and domestic policy are more married than Bogart and Bacall. //

Today, military, economic, and political issues cross continents, and borders. Help me achieve the third initial of "GOP": Progress for America, and the world.

That needs to be more spelled out, like:

Cracking foreign protectionism means more Am exports & more Am jobs. Winning the Cold War means securing Am's peace.

Needs work - more clear

knagging he wants etc

humor

refusing

When a dictator endangered the Western Hemisphere -- we helped the Panamanian people restore free elections by kicking him out. Secretary of State Ted Kennedy, was that foreign or domestic policy?

As Communism crumbled, we made it clear that America will support those who promote democracy and free enterprise -- and thank God we did. // If liberal Democrats had their way, the Berlin Wall would still be standing -- and liberty would still be ~~drowning~~ ^{sleeping}. // Senator of Defense George Mitchell, is democracy foreign policy or domestic policy?

When a brutal tyrant invaded Kuwait -- we helped roll back aggression and liberate a land. Tell me, Senator of Everything Howard Metz^Eanbaum, was this victory foreign or domestic? Desert Storm made America a better place. I am proud of our troops: They made ours a better world. //

You must admit. Liberals are consistent / consistently wrong. ^{Oh yes, they stumble & trip upon the ducts once & a while, but they usually pick themselves up & carry on} How can America entrust its freedom to those who were prepared to compromise with Saddam Hussein? If the Democrats ^{who as if nothing ever happens} voted against our use of force in the Gulf had had their way, we would by now have witnessed the completion of societal meltdown in Kuwait -- and the approach of a nuclear countdown in Iraq. //

Today, we need leaders who know how industry in Missouri is linked to trade in Singapore -- or how building war planes in St. Louis can help keep the peace. // Kit Bond is such a man. // He helped draft the 1990 Farm Bill, that has made America more competitive overseas. [[Later, he was asked how he got 23

provisions in the bill. "Simple," he said, "Missourians gave me the best ideas."]] // He led the successful fight to make the F/A-18 the Navy's carrier-based aircraft for the next decade. // ((Kit, as a Navy man, you've given me the idea of re-enlisting.))

Kit Bond believes in exports that work -- whether it is winter wheat or the sunshine of democracy. So do I. // Last year, I was in Columbia. Why? To help take drugs off our streets. // Last week, I was in Rome. Why? In part, to tell our allies: Free trade must be fair trade. // Ask anyone charged with leadership -- not the cheap shots of demagoguery. When I go abroad, it's to help America at home.

Almost half a century ago, Wendell Wilkie wrote best-selling book titled, "One World." Today, our world is smaller, our fate even more indivisible. // This is not the time for a New Isolationism -- or an Old Ignorance that Roosevelt, Truman, and Kennedy would have scorned. // I speak of the ignorance that we can divorce America from the rest of the world -- wishing our problems away instead of willing solutions^{we need}. //

Our solutions begin with "GOP" -- growth, opportunity, and progress -- not merely initials for a party, but a future for this country. // Kit Bond's campaign proclaims, "Values we believe in, experience we trust." So let us use these values, and that leadership, to celebrate America -- and elect Kit Bond the next Governor of the great State of Missouri.

#

CELEBRATE AMERICA

FROM:

Name

Address

City

Zip

Daytime Phone

Dear Senator Bond and President Bush:

YES, I/we would be honored to attend
“Celebrate America” with President Bush. Enclosed is
our check of \$ _____ for:

_____ Backstage Celebrity Dinner, Presidential Address
and reserved seat show tickets at \$250 per person,
\$500 per couple.

_____ Reserved seat Presidential Address and show tickets
at \$100 per person.

_____ Complimentary children’s tickets (limit 1 for
each adult ticket purchased, 15 and under,
immediate family only.)

_____ Non-reserved show tickets at \$50 per person.

_____ Complimentary children’s tickets (limit 1 for
each adult ticket purchased, 15 and under,
immediate family only.)

No, I/we cannot attend “Celebrate America” but here is our
special gift of \$ _____.

Signature

Please print your name(s) as you want them to appear on the
program and other “Celebrate America” material.

(name as you want it listed)

For additional information call (314) 849-1030.

Please make personal or PAC checks payable to “Missourians for Kit Bond” and
return with this form in the enclosed envelope.

Mastercard/Visa information on back.

Please complete reverse side with information for the Secret Service.

Federal Law and the Secret Service require that we ask for your:

Employer _____ Occupation _____

Office Telephone () _____ - _____

Home Telephone () _____ - _____

Social Security Number(s) _____ - _____ - _____

_____ - _____ - _____

Contributions to Missourians for Kit Bond are not tax deductible. Paid for and authorized by Missourians for Kit Bond, Charlotte Musgrave, Treasurer.

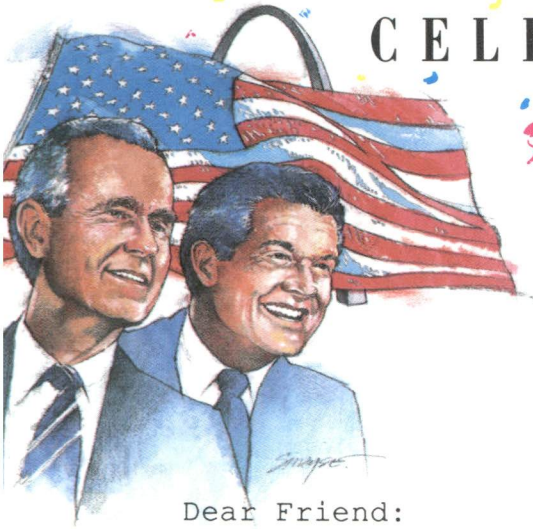
I want to charge my tickets to my: Visa Mastercard

Acct. Number _____ Exp. Date _____

Name on Card _____

Signature _____ Date _____

CELEBRATE AMERICA



October 22, 1991

Dear Friend:

You are cordially invited to join President George Bush, me and friends from across Missouri for one of the most exciting political events in Missouri history, "Celebrate America."

This spectacular evening will be highlighted with an address by the President and a special performance by country music recording artists, The Gatlin Brothers.

The date is November 13, in St. Louis County and the place is the brand new Riverport Amphitheatre.

You won't want to miss out on the excitement. Everyone will be there. Senator Jack Danforth, Governor John Ashcroft, Secretary of State Roy Blunt, Attorney General Bill Webster, State Treasurer Wendall Bailey and State Auditor Margaret Kelly will be joining in the fun. This will be the political event of the year!

Will you attend? We want as many friends of the President to come as possible, so we're offering a number of options. For \$250 a ticket, you can attend a special Backstage Celebrity Dinner, the Presidential Address and the musical salute to America by The Gatlin Brothers.

For \$100 a ticket, you can attend the Presidential Address and musical entertainment in reserved seating.

For \$50 a ticket, you can attend the Presidential Address and musical tribute in general seating. We encourage families who choose this option to come early and enjoy the warm-up entertainment and Riverport concessions. The Riverport Amphitheatre will be specially enclosed and heated for the evening!

Chartered bus transportation is being arranged to St. Louis from Springfield, up I-44, from Cape Girardeau up I-55, and from Jefferson City on I-70, with stops along the way. A TWA flight has been chartered from Kansas City to St. Louis and includes a shuttle to Riverport for same day travel. For information on any of these call (314)846-1030.

(over, please)

P.O. Box 270329 • St. Louis, MO 63127

Contributions or gifts to Missourians for Kit Bond are not tax deductible for Federal Income Tax purposes.
Paid for by Missourians for Kit Bond.

Page Two

I hope you reserve your tickets now to be a part of this historic night. As an added bonus, for every Adult ticket purchased for the show, we will include a FREE child's ticket (immediate family, under 15) so you can bring the whole family!

If you purchase tickets -- or if you contribute \$250, \$100 or \$50 but cannot attend -- we will list you as an Honorary Sponsor in the "Celebrate America" souvenir program.

If you cannot attend, but contribute \$35, \$25 or \$20, we'll list you in the souvenir program as a "Celebrate America" Sponsor because I want the President to know you're helping.

There are also tremendous commemorative items you can order, including a special limited edition print. Please take a moment to glance over the enclosed form and place your order now.

To order tickets and commemorative items, or simply to make your contribution in support of "Celebrate America" return the enclosed reply form today.

On behalf of the President and all those who will be with us for the evening, I sincerely hope you will join us for the celebration. Your participation in "Celebrate America" is very important to me and I look forward to seeing your name as one of the proud participants!

Sincerely,

A handwritten signature in blue ink that reads "Kit Bond". The signature is written in a cursive style with a large, stylized initial "K".

Kit Bond

P.S. Please keep the colorful invitation enclosed in this package as a souvenir of "Celebrate America." The original watercolor artwork you see on its cover is the same art that is being used on our other souvenir collectors items prepared to commemorate this special celebration. Plus, you can reserve your own souvenir items, including the special, frameable quality print by returning the enclosed order form with your "Celebrate America" reservation. These souvenir items will be a lasting commemorative of this historic evening.

(Smith/Grossman)
Draft Two
November 5, 1991
BOND

PRESIDENTIAL REMARKS: BOND FUNDRAISER
ST. LOUIS, MISSOURI
WEDNESDAY, NOV. 13, 1991

Senator Danforth -- thank you for being a tower of strength.
// Secretary of State Roy Blunt, Attorney General Bill Webster,
State Treasurer Wendall Bailey. // Ozzie Smith, that baseball
acrobat. // My brother, Bucky Bush and cousin, Bert Walker. // *No. 4, St. Louis Music. // Sid B. ... 44% Bob ... //*
Most of all, two men who personify Missouri -- Governor Ashcroft, *un 5*
and our next Governor, Kit Bond. // *u dept delg ...*

Thank you for that introduction, and the chance to be back
in the city where -- you'll excuse a personal note -- my mother
was born and raised. // My favorite mystic, St. Louis' Yogi
Bera, once said of a restaurant, "Nobody goes there anymore.
It's too crowded." / I am pleased to see this capacity crowd. //

Let me say, first: My remarks will be brief. ((You've
heard a lot about term limits -- I'm for them. // Congress
limits a President's terms. It's time Congress limited its own
terms. // Term limits don't apply to the length of speeches, but
I'm going to keep these remarks short, anyway.)) //

((Driving from the airport, someone was telling me they miss
having an NFL franchise in St. Louis. // I said -- as an Oilers
fan, I know what I'm talking about: "Look at the bright side --
you don't have to lose to the Redskins this year."))

Tonight, the bright side lights this ampitheatre. // ~~Later,~~ ^{later,}
 you'll be hearing from the Gatlin Brothers. // ((I'd rather be a
 Republican listening to the voice of a great country group, than
 a Democrat facing the music at the polls. // ^{ya} We're here to honor
 an even brighter star: The next Governor of the State of
Missouri. //

Kit Bond's going to prove that even someone who went to
 Princeton can be a magnificent Governor. He's already been a
 superb Senator -- just as he's excelled at every stop in the
 road. / Raised in Mexico, Missouri. / Law school graduate of
 the University of Virginia. // Assistant Attorney General for
 the Consumer Protection Division -- named, incidentally, by Jack
 Danforth. // Then, Kit became State Auditor / then, at 33, your
 Governor -- the youngest Governor in Missouri history / then,
 finally, Junior Senator. // ((I haven't even mentioned his role
 as campaign chairman for Bush-Quayle '88.)) //

There's an old saying, "What goes around, comes around. //
 In 1986, Kit Bond went to the United States Senate. ^{now} ~~Now~~, the
 time has come for him to come back to Jefferson City. // I say
 that because Kit has a record to build upon -- not merely
 rhetoric to run upon. // We hear a lot of hot air from the other
 party these days, but it isn't going to sell in Missouri. The
 motto here is Show-Me -- not Snow-Me. //

Kit Bond will be a great Governor because he knows what
^{he} ~~makes~~ ^{is} America great. ((No, not just the ^{the} fishing he loves on the
 Lake of the Ozarks)) -- and certainly not the tired old thinking

by the committees / ^{Area with the} subcommittees / and alleged "leaders" of Congress. Rather, new thinking which believes in growth / opportunity / and progress ^(C) for America. // It's no accident those initials are GOP. //

Liberal Democrats in Congress don't trust people to run America. Republicans -- on the other hand -- know how one-party control of Congress can ruin America. // That is why our agenda differs from the Democrats'. It rests on one word // freedom // the freedom to unchain America // the freedom to create and grow. // Federal red tape can turn initiative black and blue. So we have ^{used} pushed the first letter of "GOP" -- growth initiatives -- to enlarge personal dignity -- not impersonal government. //

To ^{our} ~~the~~ west of here are towns like __ and __, and cities whose horizons stretch upward to the sky. To the south are the hardscrabble hills of the Ozarks. // Think of the people who live there -- good people / quiet, decent people. They don't want government to make decisions for them. They want government to help them make decisions for themselves. //

As Senator, Kit Bond has backed our growth initiatives to help ease their credit crunch: Banking reform, personal savings incentives, the creation of an R&D tax credit, and increased investment in science, technology, and infrastructure. // He has endorsed Enterprise Zones to create new jobs, and home ownership incentives to turn tenants into homeowners. He supports our committee under Dan Quayle to cut the regulatory burden on American business. //

I wish I could tell you Congress has done the people's business by passing these initiatives. I also wish I could tell you the Tooth Fairy is real. Sadly, liberal Democrats refused even to permit a vote on our capital gains tax cut to propel the economy. / Their agenda is ^{is sup. to} to sabotage America's. ^{made} So far they've succeeded -- which makes it imperative that in 1992 they fail. //

Those who wring their hands about Congress-bashing should pay more attention to how Congressional inaction is bashing America. // How can growth occur when the Senate won't even vote on important appointments to key economic positions? It can't - - not as long as the tired thinking of Tax and Spend prevails inside-the-Beltway. // ((You know, I can't be in St. Louis without thinking of the name, "Dizzy." // If you're talking baseball, it means a great pitcher. If you're talking politics, it describes a different Gas House Gang back on Capital Hill.))

This brings me to the second letter of "GOP" -- opportunity. // Our Administration wants to give every American an equal chance at the starting line -- so that each of us ~~is~~ striving, hoping, ~~creating~~, dreaming -- can then decide the finish line. //

((Kit Bond knows what I'm talking about. To him, each Missourian is precious. // Here's a story -- 1989, the State Fair in. First, he flipped burgers with cattlemen in their tent. // Then, he took son Sam to look at animal exhibits. //

((Finally, they snuck off to the pork chop tent for a sandwich. There, Kit said to a man, "You look like Joe Jones from Cooper County." ~~Surprised~~, the man replied, "Well, he's my

cousin." // Bert likes that one. // People matter to Kit Bond --
 - just as they do to us.) //

That is why we have launched a strategy to combat drugs --
 and why we have pushed through legislation to give parents
 increased access to child care without creating a new
 bureaucracy. // Kit Bond can tell you about that. He has
 supported these and other bills to make America a ^{a better society} ~~better~~ society.
 / I think of our legislation to guarantee the rights of people
 with disabilities -- the Americans With Disabilities Act -- or
 how we put together the Clean Air Act to wisely use -- and
 preserve -- our natural resources. //

These things happened not because -- but despite -- liberals
 in Congress. Thank God for Republicans, and the few moderates
 left in the ^{Dem} ~~other~~ party. / Recently, a ^{pull} ~~Democratic~~ candidate said I
 have feet of clay. The problem is that too often liberals in
 Congress have heads of clay. // ^{the only one}

I believe America deserves the opportunity to be free of
crime. ~~Liberals disagree.~~ Last March 6, I challenged Congress
 to pass a bill to take criminals off the street. I still don't
 have a bill. // Let's elect a Congress more sympathetic to
police than to the criminals. // ^{well,}

I believe America's kids deserve the opportunity to
 celebrate God in our classrooms. ~~Liberals disagree.~~ // Let's
 elect a Congress which will pass a Constitutional Amendment
restoring voluntary prayer to American schools. //

well,

I believe we need transportation legislation the Congress has delayed for __ days. ((Kit Bond knows how bad Missouri roads and bridges are. He told me he was surprised I could drive to this event -- and glad I don't have to cross the bridge to St. Charles.)) // ~~Liberal Democrats~~ want a bill which fills politicians' pockets. Help me elect a Congress which will pass a bill to meet local needs. // *in California*

Finally, I believe that our kids deserve the opportunity for an education based on lessons taught -- not dollars spent. // Liberal Democrats want to improve education by pandering to special interests like the NEA. I ask you to help America's true interests -- our kids -- by electing men like Kit Bond who believe in more local control and more parental choice. //

Now, I admit I get impatient about these things. // ((Here's a ^{new} story ~~which shows what I mean~~. I told John Sununu I'd like to deliver a speech called, "Keeping Pace with Rapidly-moving events." He said, "Do you really think an audience wants to hear what it's like to play 18 holes with you?" I said, "Sure, I like to do things quickly // and you can ignore that humor that I watch 60 Minutes in three-quarters of an hour.")) //

I think America needs ~~more than~~ a Congress ^{*in charge*} which acts like a 78 rpm record played on 33. ~~I also think~~ ^{*it also*} it deserves a Congress which recognizes that the world doesn't end at the water's edge. // You know who I'm referring to: Liberals who don't understand that foreign and domestic policy are more married than Bogart and Bacall. // Today, military, economic, and political issues cross

continents, and borders. Help me achieve the third initial of "GOP": Progress for America, and the world.

When a dictator endangered the Western Hemisphere -- we helped the Panamanian people restore free elections by kicking him out. Secretary of State Ted Kennedy, was that foreign or domestic policy?

As Communism crumbled, we made it clear that America will support those who promote democracy and free enterprise -- and thank God we did. // If liberal Democrats had their way, the Berlin Wall would still be standing -- and liberty would still be drowning. // Senator of Defense George Mitchell, is democracy foreign policy or domestic policy?

When a brutal tyrant invaded Kuwait -- we helped roll back aggression and liberate a land. Tell me, Senator of Everything Howard Metzanbaum, was this victory foreign or domestic? Desert Storm made America a better place. I am proud of our troops: They made ours a better world. //

You must admit. Liberals are consistent / consistently wrong. How can America entrust its freedom to those who were prepared to compromise with Saddam Hussein? If the Democrats who voted against our use of force in the Gulf had had their way, we would by now have witnessed the completion of societal meltdown in Kuwait -- and the approach of a nuclear countdown in Iraq. //

Today, we need leaders who know how industry in Missouri is linked to trade in Singapore -- or how building war planes in St. Louis can help keep the peace. // Kit Bond is such a man. // He

helped draft the 1990 Farm Bill, that has made America more competitive overseas. [[Later, he was asked how he got 23 provisions in the bill. "Simple," he said, "Missourians gave me the best ideas."]] // He led the successful fight to make the F/A-18 the Navy's carrier-based aircraft for the next decade. // ((Kit, as a Navy man, you've given me the idea of re-enlisting.))

Kit Bond believes in exports that work -- whether it is winter wheat or the sunshine of democracy. So do I. // Last year, I was in Columbia. Why? To help take drugs off our streets. // ^{two weeks from now} Two weeks from now, I'll go to Japan. Why? ⁱⁿ part, because they're our best customer. // Ask anyone charged with leadership -- not the cheap shots of demagoguery. When I go abroad, it's to help America at home.

Almost half a century ago, Wendell Wilkie wrote best-selling book titled, "One World." Today, our world is smaller, our fate even more indivisible. // This is not the time for a New Isolationism -- for ^{an} Old Ignorance that Roosevelt, Truman, and Kennedy would have scorned. // I speak of the ignorance that we can divorce America from the rest of the world -- wishing our problems away instead of willing solutions. //

Our solutions begin with "GOP" -- growth, opportunity, and progress -- not merely initials for a party, but a future for this country. // Kit Bond's campaign proclaims, "Values we believe in, experience we trust." So let use these values, and that leadership, to celebrate America -- and elect Kit Bond the next Governor of the great State of Missouri.

(Smith/Grossman)
Draft One
November 5, 1991
BOND

PRESIDENTIAL REMARKS: BOND FUNDRAISER
ST. LOUIS, MISSOURI
WEDNESDAY, NOV. 13, 1991

Senator Danforth -- thank you for being a tower of strength.
// Secretary of State Roy Blunt, Attorney General Bill Webster,
State Treasurer Wendall Bailey, State Auditor Marget Kelly. //
✓ Ozzie Smith, that baseball acrobat. // Jack Buck, a Hall of Fame
announcer. // Bob Costas, a household word. Most of all, *two men*
current Governor Ashcroft, and our next Governor, Kit Bond. // *who personally*
Missouri

Thank you for that introduction, and the chance to be back
in the Gateway City. My favorite *philosopher* ~~philosopher~~, St. Louis' Yogi
Bera, once said of a restaurant, "Nobody goes there anymore.
It's too crowded." / It is a delight to see this capacity crowd.

Let me say, first: My remarks will be brief. ((You've
heard a lot about term limits -- incidentally, I'm for them. //
Congress limits a President's terms. It's time Congress limited
its own terms. // Term limits don't apply to the length of
speeches, but I'm going to keep these remarks short, anyway.)) //

((Driving from the airport, someone was telling me they miss
having an NFL franchise in St. Louis. // I said -- as an Oilers
fan, I know what I'm talking about: "Look at the bright side --
you don't have to lose to the Redskins this year."))

Tonight, the bright side lights this amphitheatre. // Later,
you'll be hearing later from the Gatlin Brothers. // I'd rather

be a Republican listening to the voice of a great country group,
 than a Democrat facing the music at the polls. // *But we're here to honor*
 An even
 brighter star ~~is~~ tonight's honored guest. We are here to support
 the next Governor of the great State of Missouri. //

Kit Bond's going to prove that even someone who went to
 Princeton can be a great Governor. He's already been a great
 Senator -- just as he's excelled at every stop in the road. /
 Raised in Mexico, Missouri. / Law school graduate of the
 University of Virginia. // Assistant Attorney General for the
 Consumer Protection Division -- named, incidentally, by Jack
 Danforth. // Then, State Auditor / then, at 33, your Governor -
 - the youngest Governor in Missouri history / then, Junior
 Senator. // ((I haven't even mentioned his role as campaign
 chairman for Bush-Quayle '88.)) //

There's an old saying, "What goes around, comes around. //
 In 1986, Kit Bond went to the United States Senate. Now, the
 time has come for him ~~to~~ come back to Jefferson City. // I say
 that because Kit has a record to build upon -- not merely
 rhetoric to run upon. // We hear a lot of *hot air* (rhetoric) from the
 other party these days, but it isn't going to sell in Missouri.
 This is the *motto* Show-Me -- not the Snow-Me ~~State~~. //

Kit Bond will be a great Governor because he knows what
 makes America great: People who believe in growth / opportunity
 / and progress for America. // It's no accident those initials
 are GOP. //

The liberals running Congress
~~Democrats~~ don't trust people to run America. Republicans

know how the bureaucracy can ruin America. // That is why our domestic agenda is founded on one word // freedom // the freedom to unchain America // the freedom to create and grow. // Federal red tape can turn initiative black and blue. So we have pushed growth initiatives to enlarge personal dignity -- not impersonal government. //

Think of Missouri towns like __, and cities like __ and __. Recall the hardscrabble ^{hills?} ~~streets~~ of the Ozarks to the south. // Good people / quiet, decent people // people who want government not to make decisions for them -- but to let government help them make decisions for themselves. //

As Senator, Kit Bond has backed our growth initiatives to help ease our credit crunch: Banking reform, personal savings incentives, the creation of an R&D tax credit, and increased investment in science, technology, and infrastructure. He has endorsed Enterprise Zones to create new jobs, and home ownership incentives to ^{turn tenants into homeowners.} ~~spur new housing~~. He supports our committee under Dan Quayle to cut the regulatory burden on American business. //

I wish I could tell you Congress has done the people's business by passing these initiatives. I also wish I could tell you the Tooth Faith is real. Sadly, liberal Democrats have given our economy a ^{toothache} ~~cavity~~ -- refusing even to permit a vote on our capital gains tax cut to unleash a new wave of opportunity. // Liberal Democrats have a simple agenda: To sabotage America's agenda. So far they've succeeded -- which makes it imperative that in 1992 they fail. //

Those who wring their hands about Congress-bashing should pay more attention to how Congressional inaction is bashing America. // How can growth occur when the Senate won't even vote on important appointments to key economic positions? How can the economy revive if liberal Democrats prefer the ladder of dependency to the pride of self-reliance? It ^{can't} -- not as long as the Party of Tax and Spend rules inside-the-Beltway. // ((You know, I can't be in St. Louis without thinking of the name, "Dizzy." // If you're talking baseball, it means a great pitcher. If you're talking politics, it describes the ~~Democratic Party.~~))

This brings me to the second letter of "GOP" -- opportunity. // Our Administration wants to give every American an equal chance at the starting line -- so that each of us -- striving, hoping, creating, dreaming -- can then decide the finish line. //

That is why we have sought unprecedented spending on our drug strategy in order to combat drugs -- and why we have pushed through legislation to give parents increased access to child care without creating a new bureaucracy. // Kit Bond can tell you about that. He has supported these and other bills to make America a better society. / I think of our legislation to guarantee the rights of people with ^e Disabilities -- the Americans With Disabilities Act -- or how we put together the Clean Air Act to wisely use -- and preserve -- our natural resources. //

I applaud Congress for enacting these means to opportunity's end. They show that not always do Democrats have one what of their candidates said of me: That I have feet of clay. //

Here's the problem: When you look at the big picture, liberals control the Democratic Party, and Democrats control the Congress. Too often these liberals have heads of clay. //

I believe America deserves the opportunity to be free of crime. Apparently, liberals disagree. Last March 6, I challenged Congress to pass a bill to take criminals off the street -- including a workable death penalty. I still don't have a bill. // Let's elect a Congress more sympathetic to police than to the criminals. //

I believe America's kids deserve the opportunity to celebrate God in our classrooms. Apparently, liberals disagree. // Let's elect a Congress which will pass a Constitutional Amendment restoring voluntary prayer to American schools. //

I believe we need transportation legislation the Congress has delayed for __ days. ((Kit Bond knows how bad Missouri roads and bridges are. He told me ^{he} was surprised I could drive to this event -- and glad I don't have to cross the bridge to St. Charles.)) // Liberal Democrats want a bill which fills politicians' pockets. Help me elect a Congress which will pass a bill to meet local needs. //

Finally, I believe that our kids deserve the opportunity for an education based on lessons taught -- not dollars spent. // Liberal Democrats want to improve education by pandering to special interests like the NEA. I ask you to help America's true interests -- our kids -- by electing men like Kit Bond who believe in more local control and more parental choice. //

Now, I admit I get impatient about these things. //

X ((Here's a story which shows what I mean. I told John Sununu I'd like to deliver a speech called, "Keeping Pace with Rapidly-moving events." He said, "Do you really think an audience wants to hear what it's like to play 18 holes with you?" I said,

✓ "Sure, I like to do things quickly // and you can ignore that

humor that I watch 60 Minutes in three-quarters of an hour.)) //

I think America needs more than a Congress which acts like a 78 rpm record played on 33. I also think it deserves a Congress which recognizes that the world doesn't end at the water's edge.

// You know what I'm talking about: Liberals who don't

understand that foreign and domestic policy are more married than Bogart and Bacall. // ^{in our world} ~~Help me spread the word that~~ military, economic, and political issues cross continents, and borders.

Help me achieve the third initial of "GOP": Progress for America, and the world. //

When a dictator endangered the Western Hemisphere -- we helped the Panamanian people restore free elections by kicking him out. Senator Mitchell, was that foreign or domestic policy?

As Communism crumbled, we made it clear that America will support those who promote democracy and free enterprise -- and thank God we did. // If liberal Democrats had their way, the Berlin Wall would still be standing -- and liberty would still be drowning. // ^{speaking of} Senator Kennedy, is democracy foreign policy or domestic policy?

When a brutal tyrant invaded Kuwait -- we helped roll back aggression and liberate a land. Tell me, Senator Metzbaum, that other great moderate, was this victory foreign or domestic? Desert Storm made America a better place. I am proud of our troops: They made ours a better world. //

You must admit. Liberal Democrats are consistent / consistently shameless / consistently wrong. If the Democrats who voted against our use of force in the Gulf had had their way, we would by now have witnessed the completion of societal meltdown in Kuwait -- and the approach of a nuclear countdown in Iraq. // How can America entrust its freedom to those who were prepared to compromise with Saddam Hussein? Depending on them for national security would be like entrusting prison security to the Boston Strangler. //

Today, we need leaders who know how industry in Missouri is linked to trade in Singapore -- or how ^{building} ~~building~~ planes in St. Louis can help keep the peace. // Kit Bond is such a man. // He helped draft the 1990 Farm Bill, that has made Missouri, and America, more competitive overseas. [[At the end, having won 23 provisions in the bill, he was asked how he did it. "Simple," he said, "Missourians gave me the best ideas."]] // He led the successful fight ~~to~~ to make the F/A-18 the Navy's carrier-based aircraft for the next decade. // ((Kit, as a Navy man, you've given me the idea of re-enlisting.))

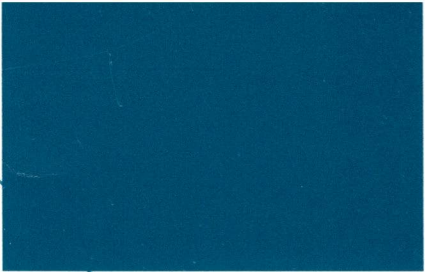
Kit Bond believes in exports that work -- whether it is winter wheat or the sunshine of democracy. So do I. // Two

weeks ago, I went to Europe -- two weeks from now, ^{I'll go} to Asia. Ask anyone charged with leadership -- not the cheap shots of demagoguery. When I go abroad, it's to help America at home. //

Almost half a century ago, Wendell Wilkie wrote best-selling book titled, "One World." Today, our world is smaller, our fate even more indivisible. // This is not the time for a New Isolationism -- ~~or~~ for an Old Ignorance that Roosevelt, Truman, and Kennedy would have scorned. // I speak of the ignorance that we can divorce America from the rest of the world -- wishing our problems away instead of ^{working for} ~~willing~~ solutions. //

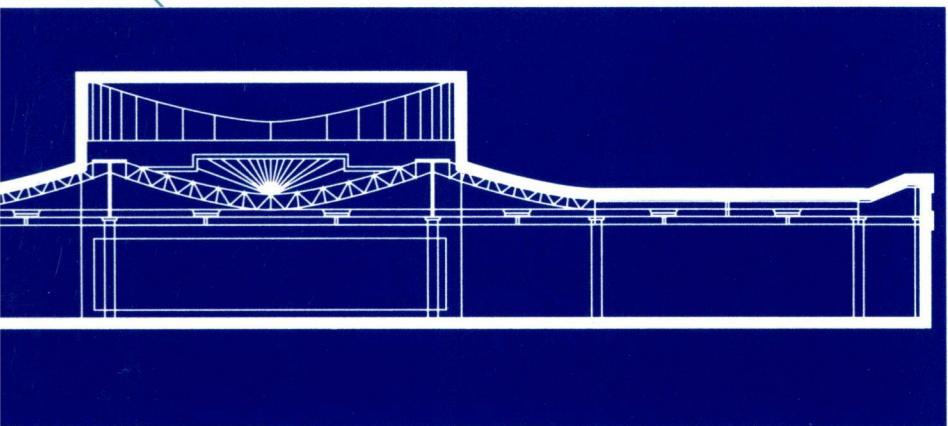
Our solutions ^{begin w/ GOP} ~~will~~ ~~nurture~~ growth, opportunity, and progress -- not merely initials for a party, but a future for this country. // Kit Bond's campaign proclaims, "Values we believe in, experience we trust." So let use these values, and that leadership, to celebrate America -- and elect Kit Bond the next Governor of the great State of Missouri.

#



RIVERPORT

Amphitheatre

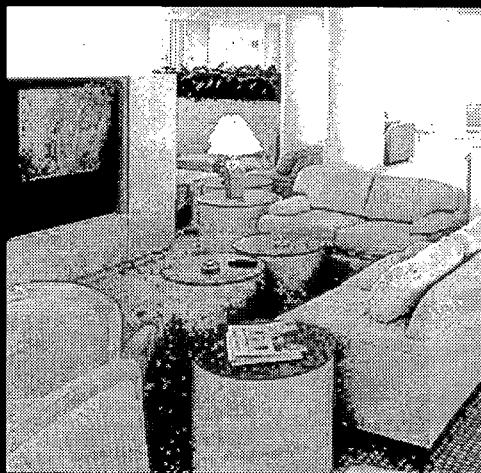


1991 Production and Planning Guide

Closest thing to the stars

You can't find a hotel closer—or better—than the Doubletree Club Hotel at Riverport, located only two minutes from the Riverport Amphitheater.

Featuring a health club facility with pool, sauna, whirlpool, and exercise room, the Doubletree Club Hotel offers a full complimentary prepared-to-order breakfast, daily Director's Reception, and 24-hour complimentary coffee service, or you can walk next door for lunch, dinner, or



a game of pool or shuffle board.

An entire floor of the hotel provides restricted access security for privacy, along with a secure switchboard. Your comfort is important to us, and any special needs or requests you have will be taken care of promptly.

The Doubletree Club Hotel is located only six miles west of Lambert-St. Louis International Airport, with complimentary 24-hour shuttle service.

DOUBLETREE CLUB HOTEL

R I V E R P O R T

(formerly Compri Hotel Riverport)

13735 Riverport Drive
St. Louis, Missouri 63043
(314) 298-3400

INDEX

Introduction 4

Technical Information 5-6

Musical Repair/Rental 7

Transportation Services 9-10

Hotels 11-15

Restaurants 16-17

Recreation 18-19

Points of Interest 20

Local Radio & TV 21

Venue Schematics 22-26

International Dialing 27



RIVERPORT AMPHITHEATRE

Riverport Amphitheatre is located approximately twenty-five minutes from downtown St. Louis and ten minutes from Lambert International Airport.

Please call no later than two weeks in advance of your engagement to discuss details and ask any questions you may have. We hope the following pages of information will be of help to you and make your visit at Riverport an enjoyable one.

Contacts:

General Manager: Steven Finkel
Production Managers: Jim McClellan, Sunil Sinha
Box Office Manager: Patty Fuhry
Theatre Manager: Cindy Schroeder

All contacts can be reached at:

(314)298-9944
FAX (314)291-4719

Please note that the Amphitheatre opens one and one-half hour (1 1/2) prior to performance time. For this reason, load-in, sound check, and any other house or stage work must be completed two (2) hours before scheduled performance time.

Due to traffic congestion, we recommend that all performers arrive at the Amphitheatre at least two (2) hours prior to their scheduled Show Time.

Mailing:

Riverport Amphitheatre
P.O. Box 1099
Maryland Heights, MO 63043

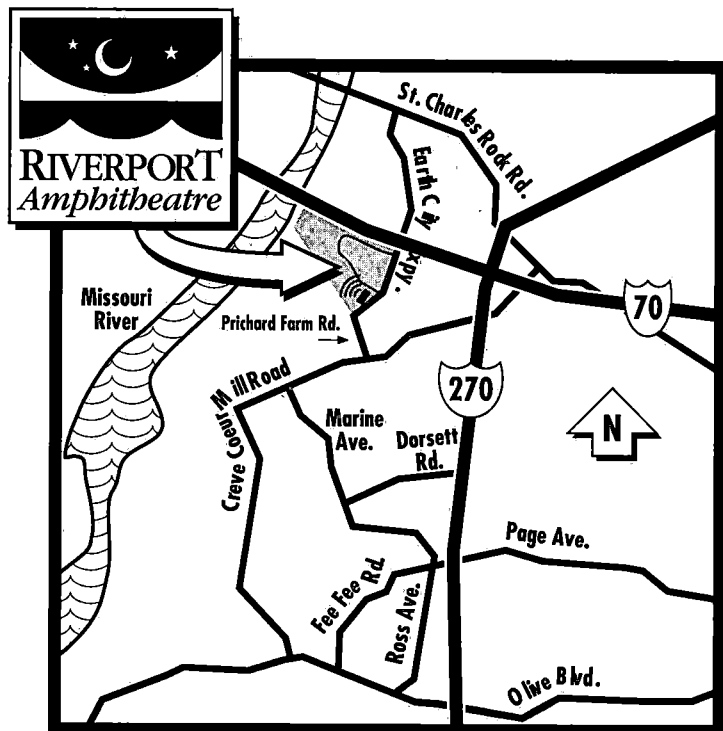
Physical:

Riverport Amphitheatre
14141 Riverport Drive
Maryland Heights, MO 63043

Artist Production Numbers:

(314) 739-4938
(314) 739-0291
FAX (314) 739-0394

Doctor, Chiropractor, Dentist,
and Masseuse available upon request.



1991 PRODUCTION AND PLANNING GUIDE

LOADING/PARKING

2-7'x6' loading doors, located upstage left and right, and 1-10'x20' door located upstage center. The doors are at dock level and equipment unloads directly onto the stage. Loading dock can service 6 48' semitrailers at one time. Parking for 6-40' buses available stage right. Washing capabilities located adjacent to bus parking. Trucks have access to docks up to one hour prior to load-in. Parking available on site if vehicles arrive earlier than this.

POWER

1-3 phase service, 1400 amps/leg(4200 total)-lights, breakdown: 600/400/200/200

1-3 phase service, 600 amps/leg(1800 total)-sound, breakdown: 400/200

8-3 phase service, 50 amps/leg(1200 total)- shore power

SPOTLIGHTS

6 Lycian Superstar 2.5's, model 1278. They use the MSR-2500 metal halide lamp.

HOUSE MIX LOCATION

Located 80' house center from downstage lip. 24' x 20' for both sound & lights.

GENERAL INFO

Distance from downstage lip to back of pavilion: 198 feet

Distance from downstage lip to back of lawn: 480 feet

LAWN SOUND SYSTEM (Clair Bros.Audio)

Consists of 16 CBA R-4T full range 3-way loudspeakers, 16 Clair/Carver PT-1200 amplifiers, 1 audio digital PAD-300-16 digital delay 1 x 3, 2 Court GE-60 2 channel 1/3 Octave equalizers, 6 DBX 166X dual channel limiters, 2 Clair Bros. AMP-19 amp racks, 6 Electro-Voice XEQ-3 cross-overs, and 6 Electro-Voice EQ-L&S Horn EQ cards. In the house: 8 CBA R-4T split into clusters of 4 each with one house amplifier rack, consisting of 8 Clair/Carver Pt-1200's.

HOUSE SOUND SYSTEM

Rental available upon request.

RIVERPORT AMPHITHEATRE

HOUSE LIGHTING SYSTEM

Rental available upon request.

RIGGING INFO

Total weight capacity-70,000 lbs. or 4,000 per point. Clearance to low steel-54', distance to high steel-60'. No obstructions for rigging. Stage width 64' x 46', sound wings 20' x 46', proscenium opening adjustable with curtains to a maximum 100' width. Stage height 5'.

DRESSING ROOMS

7 available rooms located off stage left. All rooms have toilet and shower facilities. Dining room and crew showers are also located off stage left. Band Production office and House Production office also located in this complex, both with attached toilet facilities.

LAUNDRY FACILITIES

1 residential washer and 1 residential dryer located on site for use by both in house caterer and touring production staff.

CURTAINS

1-110' x 20' valance dead hung downstage.

2-30' x 40' legs dead hung.

PYROTECHNICS

Please inquire about this during production advance. Completely dependent on local fire regulations as they will pertain to Riverport Amphitheatre.

Dale's Music

6235 N. Lindbergh
Hazelwood, Mo 63042
(314)895-3403
Contact: Bob Moggio

Gravity Strings

1546 S. Broadway
St. Louis, MO 63104
(314)241-0190
Contact: Jimmy Gravity

McMurray Music

10201 Page
St. Louis, MO 63132
(314)428-8600
Contact: Lori Shaw, John McMurray

St. Charles Guitar Exchange

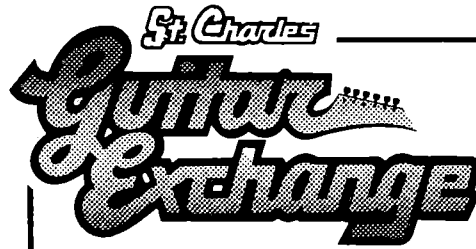
1570 Country Club Plaza
St. Charles, MO 63303
(314)946-0208
Contact: Dan Martin

Scotty's Music, Inc.

9535 Midland
St. Louis, MO 63114
(314)427-7794
Contact: Dewitt Scott

AAA Swing City Music Co.

1312 Vandalia
Collinsville, IL
(314)421-1558
Contact: Gary Haselhorst



SERVING TOUR ACTS...

The Rolling Stones	INXS	AC/DC
The Who	Neil Young	Cinderella
Crosby Stills & Nash	Prince	Aero Smith
Sting	Elton John	ZZ Top
Van Halen	Rod Stewart	Glenn Frey
Bob Dylan	Don Henley	Gun's 'N' Roses
Madonna	Eric Clapton	Bon Jovi

WITH

NEW • USED • VINTAGE
GUITARS – AMPLIFIERS – ACCESSORIES
and full line

ELECTRONIC and GUITAR
REPAIR FACILITIES
AUTHORIZED DEALER FOR...



We Buy, Sell & Trade String Instruments of Value
APPRAISALS • CUSTOM WORK • RESTORATION • REPAIR


1570 COUNTRY CLUB PLAZA
ST. CHARLES, MISSOURI 63303

314-946-0208

FAX: 314-946-8035

THE SHERATONS WEST PORT

*at
Plaza*



Stay at either the Sheraton Plaza Hotel or the Sheraton West Port Inn, and you are a 5 minute drive from the RIVERPORT complex, PLUS you'll find yourself in the middle of another entertainment wonderland that includes:

- 19 night spots and restaurants
- A variety of specialty shops and fashion boutiques
- Twin-screen cine
- Video Arcade
- A comedy club and live theatre

Sheraton Plaza Hotel
900 WEST PORT PLAZA
ST. LOUIS, MISSOURI 63146
314-434-5010



Sheraton-West Port Inn
191 WEST PORT PLAZA
ST. LOUIS, MISSOURI 63146
314-878-1500

THE HARLEY ST. LOUIS



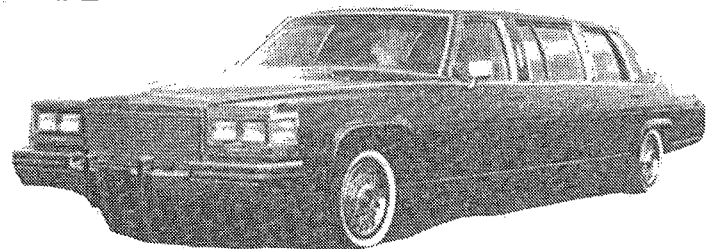
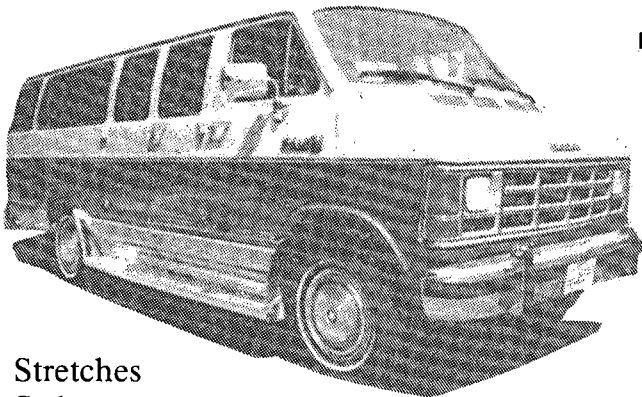
(314)
291-
6800

HARLEY HOTEL



CAREY LIMOUSINES of ST. LOUIS

OUR TOWN IS YOUR TOWN



- Stretches
- Sedans
- Passenger Vans
- Luggage Vans
- Cargo Trucks
- Buses

St. Louis, (314) 946-4114

1991 PRODUCTION AND PLANNING GUIDE**Admiral Limousine**

Contact: John Cleveland, Pam Bashaw
364 Brookes Drive
Hazelwood, MO 63042
(314)991-5466 • FAX: 731-1528
2 hour minimum, all types of vehicles available.

Carey Limousine

Contact: David Kurre, Sharon Kurre
P.O. Box 242, St. Charles, MO 63302
(314)946-4114
FAX: 947-0592
2 hour minimum, all types of vehicles available.

Lambert St. Louis International

(314)426-8000

Midcoast Aviation

Contact: Rich Ropp
Lambert St. Louis International Airport
St. Louis, MO 63145
(314)731-7111
\$10 landing fee, \$20 per day ramping fee, \$115 per day hangar fee, \$2 per gallon and \$1.94 per gallon over 500 gallons of fuel.

Fostair Helicopters

Contacts: Arlene Thomas, Clarke Thomas
(314)421-5440
FAX: 421-1214
Jet Ranger and Bel Lone Ranger available at \$475 per flight hour and \$595 per flight hour respectively.

St. Louis Helicopters

Contact: Mike Shaughnessy
(314)532-1117
FAX: 536-1714
Bel Lone Ranger and a twin engine MBB 105 available, \$600 per flight hour and \$900 per flight hour respectively (Saturday & Sunday-\$1,010 per flight hour).

RIVERPORT AMPHITHEATRE

Laclede Cab Co.

(314)652-3456

\$2.00 the first mile, and \$.90 per mile thereafter(metered in dime increments).

St. Louis County Cab Co.

(314)993-8294

\$2.45 the first mile, and \$1.00 per mile thereafter.

Yellow Cab Co.

(314)991-1200

\$2.00 the first mile, and \$1.00 per mile thereafter.

Enterprise Rent-a-Car and Leasing

(314)946-3010

(314)863-0110

Contact: Julie Pruitt

Special weekend rates available.

**National Car Rental at
St. Louis International Airport**

(314)426-6272

(314)862-9272

Contact: Dave Purl, Terri Williams

Featuring GM cars.

Sunset Ford Rent-a-Car & Leasing

(314)843-4431

Contact: Cheryl Perry

Special weekend rates and 15 passenger clubwagons available.

1991 PRODUCTION AND PLANNING GUIDE

Airport Hilton

Contact: Cynthia Long

10330 Natural Bridge Rd.
St. Louis, MO 63134
(314)426-5500

Commissionable and non-commissionable rates available; 220 rooms inclusive of 4 suites, indoor/outdoor pool, sauna, whirlpool, 24 hour free airport shuttle, fine & casual dining rooms, complimentary continental breakfast, room service available 6am-11pm, and 2 concierge floors(30 rooms per floor). Just 10 minutes from Riverport.

Airport Marriott

Contact: Mark Cahill

I-70 at Lambert International Airport
St. Louis, Missouri 63134
(314)423-9700

Commissionable and non-commissionable rates available; two indoor/outdoor pools, tennis courts, exercise room, saunas, whirlpool, and game room. 602 rooms, two dining rooms, free airport shuttle service, and room service. Just 10 minutes from Riverport.

Best Western Noah's Ark

Contact: Virginia Devlin

Restaurant & Motor Inn
1500 S. Fifth St
St. Charles, Missouri 63303
(314)946-1000

Commissionable and non-commissionable rates available; 158 rooms, 24 hour free airport shuttle, outdoor pool, sauna, exercise room, whirlpool, restaurant and room service available 6:30am to midnight. Just 5 minutes from Riverport.

Breckenridge Lambert Hotel

Contact: Michele Sifford

9600 Natural Bridge Road
St. Louis, Missouri 63134
(314)427-7600

Commissionable and non-commissionable rates available; 197 rooms, outdoor pool, saunas, whirlpool, dining room and lounge, free airport shuttle service, room service, and some rooms feature a wet bar and refrigerator. Just 10 minutes from Riverport.

Courtyard Marriott

Contact: Carla Minardi

11888 Westline Industrial Drive
St. Louis, Missouri 63146
(314)997-1200

Commissionable and non-commissionable rates available; indoor pool, whirlpool, sundeck, restaurant & lounge, exercise room. Just 10 minutes from Riverport.

RIVERPORT AMPHITHEATRE

Courtyard Marriott

Contact: Carla Minardi

828 North New Ballas Road
Creve Coeur, Missouri 63146
(314)993-0515

Commissionable and non-commissionable rates available; indoor pool, whirlpool, sundeck, restaurant & lounge, exercise room. Just 15 minutes from Riverport.

Days Inn at the Airport

Contact: Connie Swofford

4545 Woodson Rd.
St. Louis, Missouri 63134
(314)423-6770

Commissionable and non-commissionable rates available; outdoor pool, free airport shuttle from 5am-1am, breakfast dining only. Just 10 minutes from Riverport.

Doubletree Club Hotel

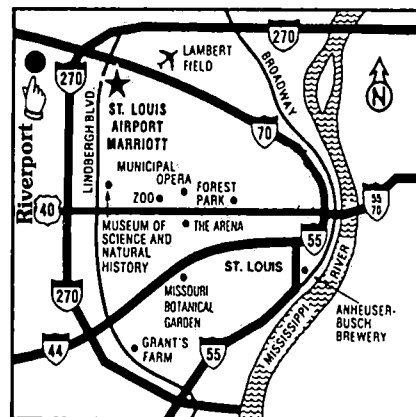
Contact: James Hanson

13735 Riverport Drive
Maryland Heights, Missouri 63043
(314)298-3400
FAX: 298-9646

Commissionable and non-commissionable rates; 176 rooms including 4 suites, private access floor, pool, sauna, whirlpool, exercise room, game room, complimentary made-to-order breakfast, 24 hour full room service, dining room, free 24 hour airport shuttle. Two minutes from Riverport.



**If our location was any better
for Riverport... it would be
front row-center!**



**ST. LOUIS
AIRPORT** **Marriott**

I-70 at Lambert Airport, St. Louis, Missouri 63134 (314) 423-9700

Admiral Transportation, Inc.

AT YOUR SERVICE 24 HRS. A DAY IN ST. LOUIS

Specializing in the Entertainment Business

- Limousines, VANS, Luxury Sedans and Cargo Vans
- Professional Uniformed Chauffeurs
- Commercially Insured and D.O.T. Certified #1309
- Confidentiality guaranteed

Preferred by Contemporary Productions since 1986

1-800-369-0769

314-731-1707

Fax 314-731-1528

Hampton Inn

Contact: Deanna Campbell

3720 West Clay
St. Charles, Missouri 63301
(314)947-6800

120 rooms, rooms \$39.95 & \$55.55; commissionable and non-commissionable, free airport shuttle, free continental breakfast, exercise room, outdoor pool, and complimentary newspaper. Just 5 minutes from Riverport.

Harley Hotel

Contact: Jeff Kuenzle

3400 Rider Trail South
St. Louis, Missouri 63045
(314)291-6800

Commissionable and non-commissionable rates available; 188 rooms, concierge level on top floor, indoor/outdoor pool, saunas, lighted tennis courts, game room, restaurant & lounge open 6am-10pm, room service available 6am-11pm, free airport shuttle, and free continental breakfast. Just 3 minutes from Riverport.

Holiday Inn

Contact: Jackie Kelley

3551 Penridge
Bridgeton, Missouri 63044
(314)291-5100

Commissionable and non-commissionable rates available; 250 rooms including 1 suite, outdoor pool, 2 saunas, whirlpool, miniature golf course, game room, restaurant and room service 6:30am-10pm, lounge open 12pm-1am, free airport shuttle. Just 5 minutes from Riverport.

RIVERPORT AMPHITHEATRE

Hotel Majestic

Contact: Denise Whaley

1019 Pine
St. Louis, Missouri 63101
(314)436-3255

Commissionable and non-commissionable rates available; 91 rooms including 3 suites, AAA four-star rating, restaurant open 6:30am-11pm, lounge open 11am-3am, 24 hour room service. 30 minutes from Riverport.

Hyatt Regency-Union Station

Contact: Priscilla Deguire

1820 Market Street
St. Louis, Missouri 63103
(314)231-1234
FAX: 436-4238

Commissionable and non-commissionable rates available; 540 rooms, outdoor pool, health club, fine dining at the Station Grille, cable television and Spectra Vision. 30 minutes from Riverport.

LIFE ON THE ROAD IS HECK.

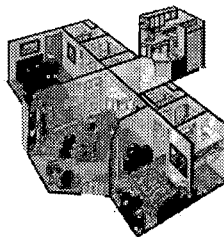
(WELL, YOU KNOW WHAT WE MEAN.)

2 Bedroom Suite \$138
1 Bedroom Suite \$108

We know you're on the road alot. And we want to make it easier for you. At Summerfield Suites® Hotel, there are no crowded lobbies or elevators, only doorside parking that puts you several easy steps from your one or two-bedroom suite.

There you can put your feet up and relax in the living area with TV and videocassette player. Or throw a six pack and snacks in the fridge in the fully-equipped kitchen.

Each bedroom is complete with a private bathroom, TV and phone line. So once you close the door, you've got all the privacy you've ever wanted.



Best of all, we're an easy eight miles from Lambert International Airport and a convenient seven miles from the Riverport Amphitheatre... away from traffic, noise and well-intentioned fans.

Very rarely, is being on the road this easy, So call us before you get to St. Louis. We'll take care of the rest!

*Subject to space availability.



1-800-833-4353

St. Louis-Westport / 1855 Craigshire Rd. / St. Louis, MO. 63146 / 314-878-1555

1991 PRODUCTION AND PLANNING GUIDE

Ritz Carlton

Contact: Karen Rendino

1 Ritz Carlton Dr.
St. Louis, Missouri 63105
(314)863-6300

Commissionable and non-commissionable rates available; 301 rooms including 32 suites, indoor pool, jacuzzi, sundeck, fitness room, masseuse, restaurants open 6:30am-11pm, lounge open 11:30am-12:30am, afternoon tea, Sunday brunch, 24 hour room service, free 24 hour airport shuttle. 25 minutes from Riverport.

Sheraton Plaza Inn

Contact: Kelly Kaemmerer

900 Westport Plaza Drive
St. Louis, Missouri 63146
(314)434-5010

Commissionable and non-commissionable rates available; 515 rooms, lakeside views available, indoor and outdoor pool, sauna, whirlpool, health club access, concierge level, complimentary morning newspaper, free local phone calls, room service available until 1am, free airport shuttle from 6:30am-11pm, 2 dining rooms. Just 15 minutes from Riverport.

Stouffer Concourse Hotel

Contact: Donald Sternberg

9801 Natural Bridge Road
St. Louis, Missouri 63134
(314)429-1100

Commissionable and non-commissionable rates available; 393 rooms, 24 hour room service, 24 hour free airport shuttle, complimentary morning newspaper and coffee, indoor/outdoor pool, jacuzzi, sauna, exercise room, private floor(key access only), 2 dining rooms, all rooms have 3 phones and minibar. Just 10 minutes from Riverport.

Summerfield Suites Hotel

Contact: Liz A. Griffin

1855 Craigshire Road
St. Louis, Missouri 63146
(314)878-1555

Commissionable and non-commissionable rates available; 106 suites including 48 two bedroom suites, outdoor pool, spa, sports court, two bedroom suites include a fully equipped kitchen, 24 hour on site convenience store, complimentary hospitality hours Monday-Thursday, complimentary continental breakfast, free airport shuttle. Just 10 minutes from Riverport.

RIVERPORT AMPHITHEATRE

Amighetti's Bakery & Sandwich Shop-5141 Wilson, (314)776-2855. Hours: Tues.-Thurs. 9am-8:30pm; Sat. 7:30am-5:30pm (entertainment noon-4pm); closed Sun. & Mon.

Casa Gallardo-462 Westport Plaza, (314)434-7755. Hours: Mon.-Thurs. 11am-midnight; Fri & Sat. 11am-1am; Sun. 11am-10pm; Specialty: Mexican cuisine. All major credit cards accepted.

Culpepper's-12316 Olive Street Rd., (314)469-3888. Hours: Mon.-Sat. 11am-1am; Sun. noon-midnight. No reservations. Specialties: chicken wings, fried chicken special on Sun. Credit cards accepted: MC, Visa, AMEX. Wheelchair accessible.

Cyrano's-1059 Big Bend, (314)645-3522. Hours: Mon.-Thurs. 11am-midnight; Fri. & Sat. 11am-1am; Sun. 5pm-midnight. Reservations suggested. Specialties: desserts, cherries jubilee, Black Forest torte. Credit cards accepted: MC, Visa, DC, AMEX.

Dierdorf & Hart's-323 Westport Plaza, (314)878-1801. Hours: open 7 days a week for lunch and dinner. Reservations recommended. Specialties: steaks, chops, seafood. All major credit cards accepted. Wheelchair accessible.

House of Jamaica-6235 Delmar, (314)725-4308. Hours: Mon.-Thurs. noon-9pm; Fri. & Sat. noon-10pm. Reservations accepted. Specialties: soulful flavorings of the Carribean, daily lunch specials, happy hour Wed. & Thurs. 4-6:30pm. All credit cards accepted. Wheelchair accessible.

Hunan Wok-2428 S. Brentwood, (314)962-0898. Hours: Mon.-Thurs. 11:30am-10pm; Fri. & Sat. 11:30am-11pm; Sun. 12:30pm-10pm. Reservations accepted for parties of five or more. Specialties: honey duck, crispy chicken, shrimp & scallops Hunan-style. Credit cards accepted: MC, Visa, AMEX.

King and I Restaurant-3226 S. Grand, (314)771-1777. Hours: Tues.-Thurs. & Sun. 5pm-10pm; Fri. & Sat. 5pm-10:30pm. Reservations accepted. Specialties: pork satay, pad Thai, pad seafood. All major credit cards accepted.

Nantucket Cove-40 N. Kingshighway, (314)361-0625. Hours: Mon.-Thurs. 5pm-10:30pm; Fri. & Sat. 5pm-11pm; closed Sun. Reservations accepted. Specialties: live Maine lobster, fresh swordfish, red snapper, blackened redfish, 10-cent oysters 5-7pm daily. Credit cards accepted: MC, Visa, DC, CB, AMEX. Wheelchair accessible.

Pacific Shore Cafe-326 Westport Plaza, (314)434-1940. Hours: lunch, Mon.-Fri. 11:30am-2pm; dinner Mon.-Thurs. 5pm-10:30pm; Fri. & Sat. 5pm-11:30pm; Sun. 5pm-9:30pm. Reservations accepted. Specialties: seafood, sushi and steaks. All major credit cards accepted.

Phil's BBQ-9205 Gravois, (314)638-1313 or 631-7725. Hours: Mon. & Tues. 4-10pm; Wed. & Thurs. 11am-10pm; Fri. & Sat. 11am-11pm; Sun. 11am-9pm. 115 W. Fifth, Eureka, (314)938-6575. Hours: Sun.-Thurs. 6am-10pm; Fri. & Sat. 6am-11pm. No reservations. Specialties: BBQ ribs, all-you-can-eat salad bar, BBQ chicken, steaks, jack salmon; call for Wed., Thurs., & Fri. specials. No credit cards accepted.

Saleem's-20 Clarkson Centre, (314)530-9010. Hours: lunch, Thurs. & Fri. 11am-2pm; dinner, Mon.-Thurs. 5-10pm; Fri. & Sat. 5-11pm; closed Sun. No reservations. Specialties: Lebanese and continental cuisine, where Garlic is King. Credit cards accepted: MC, Visa.

1991 PRODUCTION AND PLANNING GUIDE

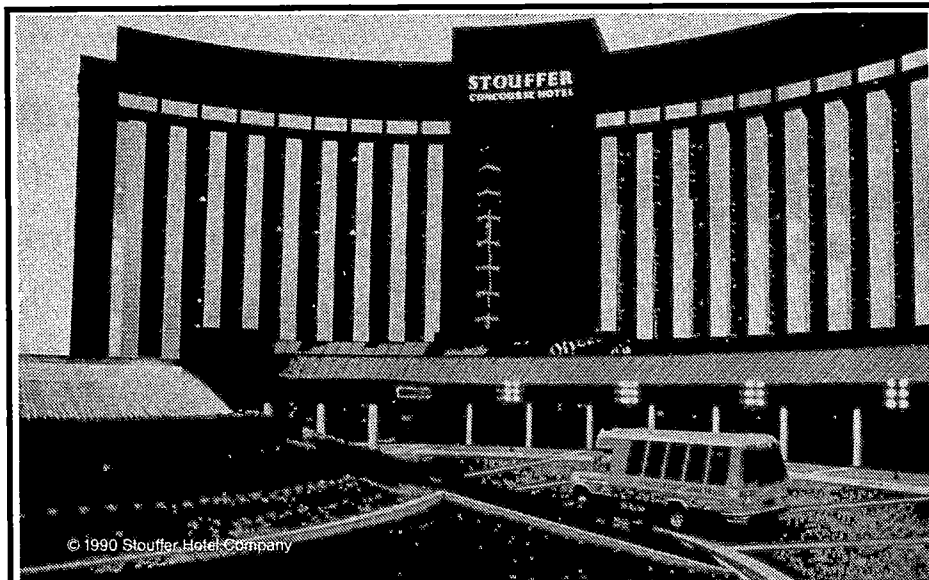
Sunshine Inn-8 1/2 Euclid, (314)367-1413. Hours: Tues.-Fri. 11:30am-10pm; Sat. 8am-10pm; Sun. brunch 10am-2:30pm, dinner 5-9pm. Specialties: natural foods, salads, soups, fried rice. All major credit cards accepted. Wheelchair accessible.

Tachibana-12967 Olive Arcade Plaza, (314)434-3455. Hours: lunch, Mon.-Fri. 11:30am-2pm; dinner, Mon.-Thurs. 5-10pm; Fri. & Sat. 5-10:30pm; Sun. 5-9:30pm. Reservations recommended. Specialties: traditional Japanese cuisine, sushi. All major credit cards accepted.

Token's-3101 Hampton, (314)647-3440. Hours: lunch, Mon.-Fri.

11am-2pm; dinner Mon.-Sat. 5-10pm. Specialties: feature fresh seafood, select steaks, salads, chicken, beef, and pasta. Credit cards accepted: MC, Visa, DC, AMEX. Wheelchair accessible.

Tony's-826 N. Broadway, (314)231-7007. Hours: Mon.-Sat. 5-11:30pm. Reservations accepted. Specialties: prime veal, prime steak, fresh seafood, freshly made pasta, valet parking. All major credit cards accepted.



Land at our doorstep, and experience Stouffer Style.

Our people: Courteous, professional staff committed to making your meeting a complete success. We'll ensure your every need is addressed and completed to perfection.

Our facilities: Whether it's your executive meeting for 10 in one of our well-appointed boardrooms or a general session for 1,000 in our Grand Concourse Ballroom, you'll find ample facilities to meet your program needs.

Our amenities: Relax and know you will be at our door in under 10 minutes any time of the day or night at no charge to you. Then wake up to a hot pot of coffee and newspaper with our compliments.

Call (314) 429-1100 for availability. Stouffer Concourse Hotel, 9801 Natural Bridge Road, St. Louis, MO 63134.

STOUFFER CONCOOURSE HOTEL
ST. LOUIS-LAMBERT INTERNATIONAL AIRPORT

STOUFFER HOTELS



A Seale Company

RIVERPORT AMPHITHEATRE

Anheuser-Busch Brewery Towers

(314)577-2626

13th and Lynch

The world's largest brewery features the Famous Clydesdale Stables, Brewing Gallery, Bottling Plant, Beechwood Aging tanks, and Hospitality Room.

Gateway Arch

(314)425-4465

National Historic Site on Riverfront

A passenger tram carries visitors to an observation room at the top of the 630-foot memorial which commemorates the role St. Louis played in America's surge westward. Located underground, below the Gateway Arch, is the Museum of Westward Expansion.

Grant's Farm

(314)843-1700

10501 Gravois

Anheuser-Busch Co., Inc. operate and maintain this land once farmed by President, General Ulysses S. Grant. Ride a trackless train through the game preserve. Visit the horse stables, miniature zoo, and Clydesdale stallion barn.

History Museum (Missouri Historical Society)

(314)361-1424

Jefferson Memorial Building, Lindell Blvd. and DeBaliviere (in Forest Park)

Renowned and colorful exhibits on the history of St. Louis, the state of Missouri, and the American West.

Laclede's Landing

(314)241-5860

On the St. Louis Riverfront just North of the Gateway Arch

Cobblestone streets and cast iron streetlamps surround dozens of century old buildings housing offices, small shops and boutiques, unusual restaurants, and a collection of nightspots that make this one of the city's premiere entertainment districts.

Missouri Botanical Garden

(314)577-5100

4344 Shaw

This National Historic Landmark features The Climatron, the world's first geologic domed greenhouse which houses a tropical rainforest. The largest traditional Japanese Garden in North America is located here as well.

Regency Square Movie Theatre

(314)946-8000

I-70 and Zumbahl

1991 PRODUCTION AND PLANNING GUIDE

The Saint Louis Art Museum

(314)721-0067

Forest Park

This museum was the Fine Arts Palace of the 1904 World's Fair and is today considered among the top ten art museums in the country.

St. Charles Golf Course

(314)946-6190

500 Friedenf

St. Louis Cardinals Baseball

(314)421-4040

Busch Stadium

Call for schedule of events and ticket information.

St. Louis Science Center - Forest Park

(314)289-4000

5100 Clayton Ave.

The center features the McDonnell Star Theatre with the Digistar computerized planetarium projector, hands-on science exhibits, Discovery Room, Science Showplace Sciencing Lab, and Monsanto Science Park; a pioneering concept in outdoors science exhibits.

St. Louis Sports Hall of Fame

(314)421-FAME

100 Stadium Plaza (in Busch Stadium)

A live action museum of St. Louis sports history which offers World Series movies, trophies, and displays on basketball, football, basketball, golf, soccer, olympics, and hockey.

St. Louis Union Station

(314)421-6655 • Market Street between 18th and 20th

The terminal of what was once the largest and busiest train station in the world has been restored and contains a festival marketplace with hotel, shops, restaurants, and entertainment.

St. Louis Zoo

(314)781-0900 • Forest Park

This zoo features more than 2,800 animals in naturalistic habitats on 83 acres. The Living World, the newest attraction, fuses high technology and live animals for the purpose of presenting a unified view of life.

Vic Tanny Health Club

(314)946-8090

1540 1st Capital Dr. South

RIVERPORT AMPHITHEATRE

Indian Food Festival

June 28-30
(618)346-5166

Cahokia Mounds

Demonstrations and tasting.

Soulard Bastille Day

July 12-14
(314)436-0828

Soulard Neighborhood

French-themed celebrations, ball, music, arts festival.

Missouri Botanical Gardens Festival of Festivals

JapanAugust 3-4

EnglandAugust 10-11

GreeceAugust 17-18

CaribbeanAugust 24-25

(314)571-5125

4344 Shaw

Celebration of cultures through music, dance, food, and crafts.

St. Louis National Charity Horse Show

September 17-21, 24-28
(314)391-0900

Queeny Park

Show includes Hunters and Jumpers and Saddle Breeds

Great Forest Park Balloon Race

September 21
(314)454-1488

Lindell and Skinker (in Forest Park)

Hare and hound race. Photo contest. Parachute team.

1991 PRODUCTION AND PLANNING GUIDE

TELEVISION

CHANNEL	NETWORK	CALL LETTERS	PHONE
2.....	ABC	KTVI	(314)647-2222
4.....	CBS	KMOV	(314)621-4444
5.....	NBC	KSDK	(314)421-5055
9.....	PBS	KETC	(314)725-2460
11.....	INDEPENDENT	KPLR	(314)367-7211
24.....	INDEPENDENT	KNLC	(314)436-2424
30.....	FOX	KDNL	(314)436-3030

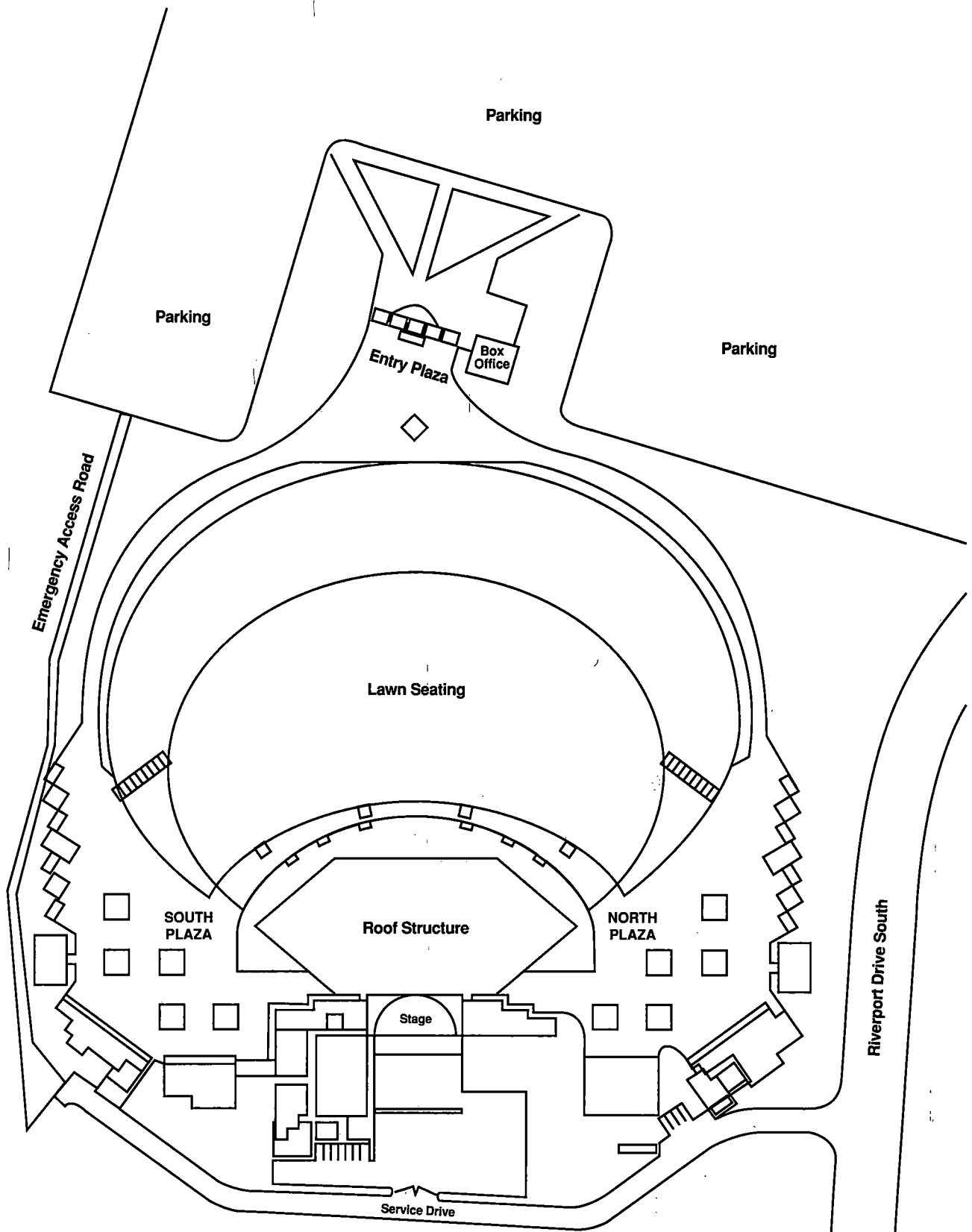
AM RADIO

KHZ	CALL LETTERS	FORMAT	PHONE
550.....	KUSA	Country	(314)997-5594
690.....	KSTL	Gospel, International	(314)621-5785
850.....	KFUO	Christian	(314)725-3030
1010.....	KXEN	Christian, Gospel	(314)436-6550
1120.....	KMOX	Talk, Sports, News	(314)621-2345
1260.....	WIBV	News, Talk	(314)241-1260
1320.....	KSIV	Christian Information	(314)961-1320
1460.....	KIRL	Gospel, Jazz	(314)946-6600
1490.....	WESL	Gospel	(314)436-1491
1600.....	KATZ	Adult Urban Contemporary	(314)241-6000

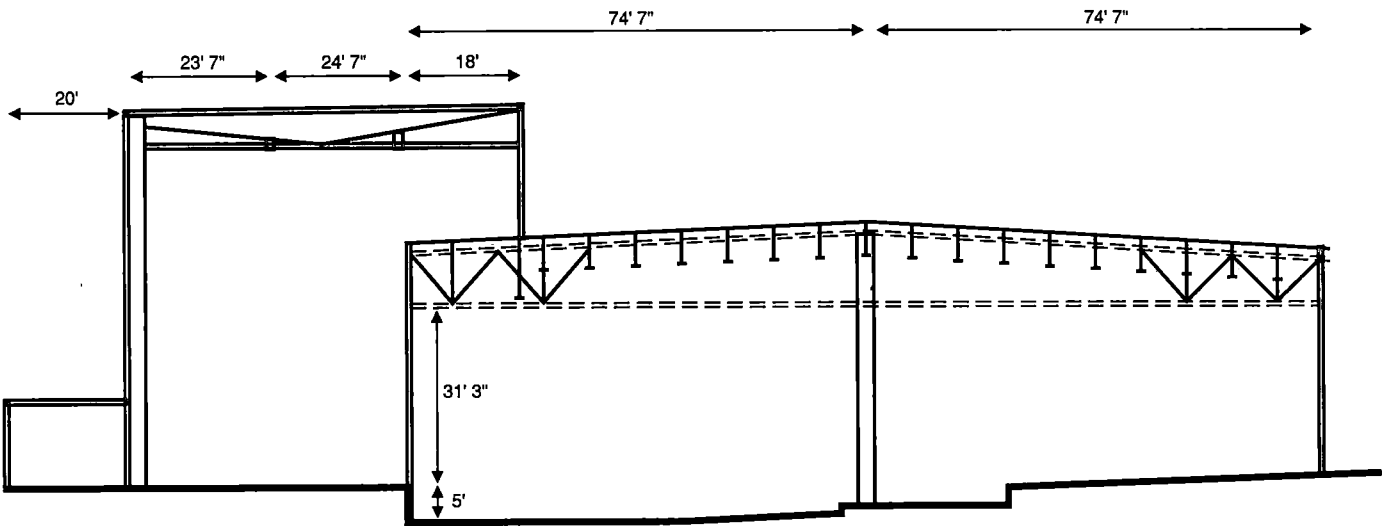
FM RADIO

MHZ	CALL LETTERS	FORMAT	PHONE
88.1.....	KDHX	International, Bluegrass, Jazz	(314)664-3955
88.7.....	WSIE	Jazz	(314)531-8870
89.1.....	KCLC	Jazz, Bluegrass, Alternative	(314)949-4891
90.7.....	KWMU	Classical, Jazz, News	(314)553-5968
92.3.....	WIL	Oldies	(314)436-1600
93.7.....	KSD	Classic Rock	(314)997-5594
94.7.....	KSHE	Rock	(314)621-0095
98.1.....	KYKY	Adult Contemporary	(314)531-9898
99.1.....	KFUO	Classical	(314)725-3030
100.3.....	KATZ	New Jazz, Adult Contemporary	(314)241-6000
101.1.....	KSTZ	Adult Contemporary, Light Rock	(314)726-0041
102.3.....	KEZK	Adult Contemporary	(314)727-2160
103.3.....	KLOU	Oldies	(314)621-2345
104.1.....	KIX	Country	(314)878-1040
104.9.....	WCBW	Contemporary Christian	(314)487-1007
105.7.....	KSTZ	Adult Contemporary, Light Rock	(314)726-0041
107.7.....	KMJM	Urban Contemporary	(314)361-1108

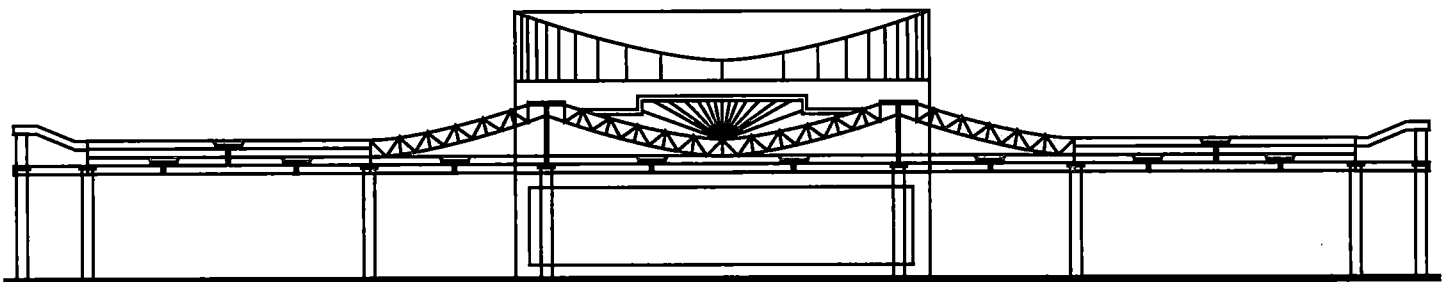
RIVERPORT AMPHITHEATRE



Venue Layout

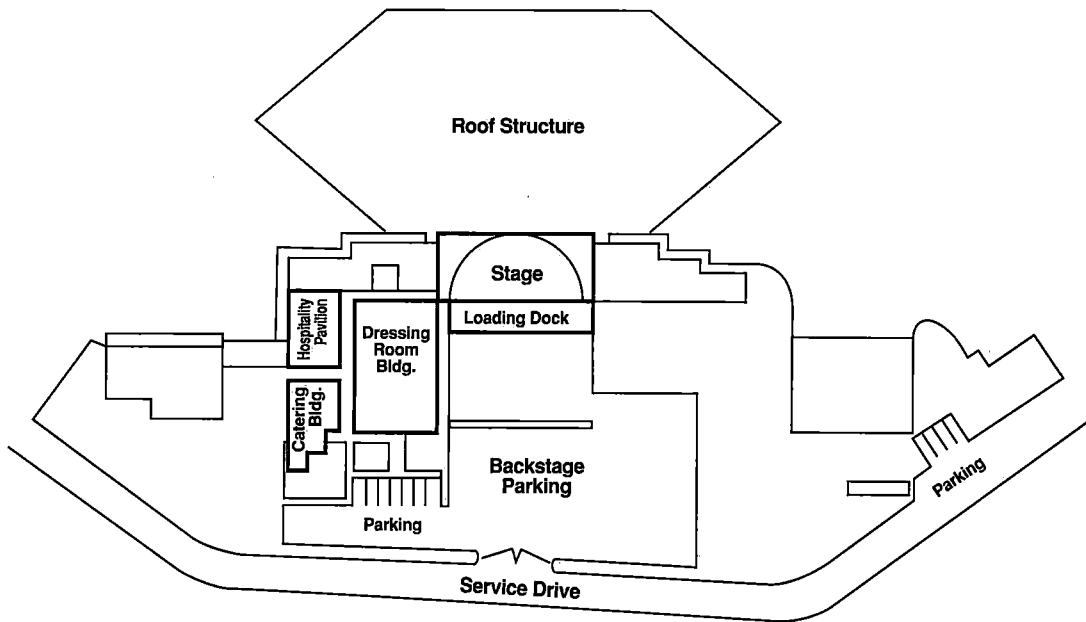


East Elevation

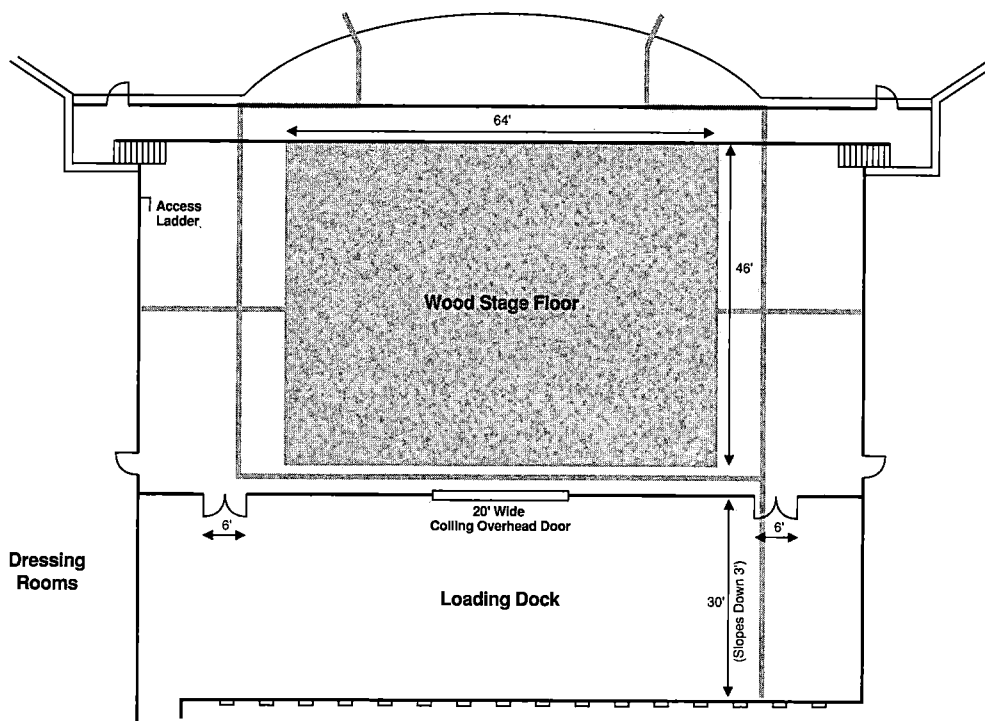


North Elevation

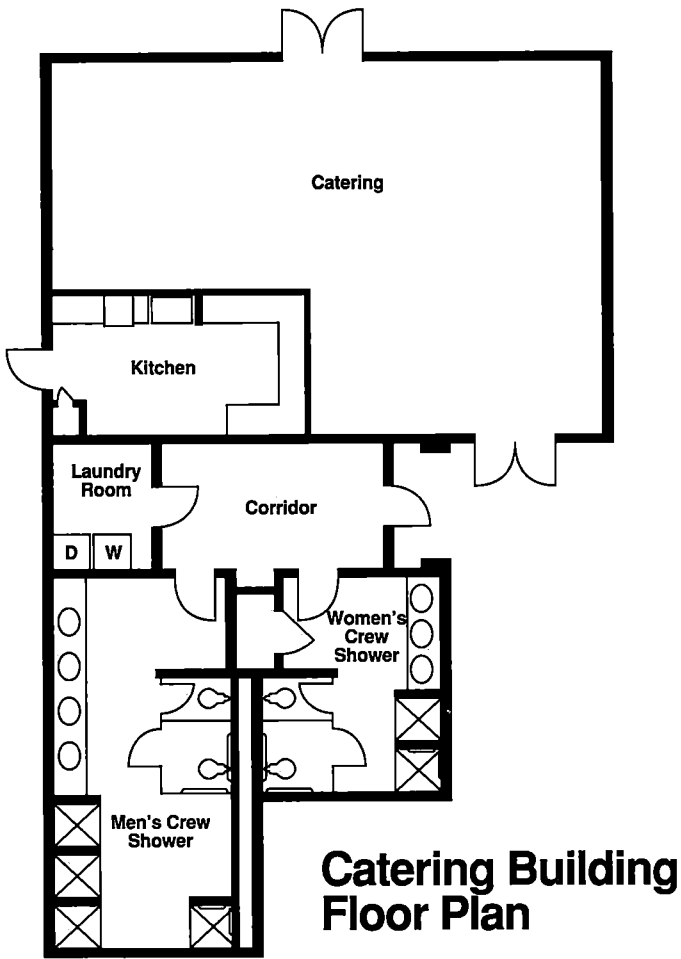
RIVERPORT AMPHITHEATRE



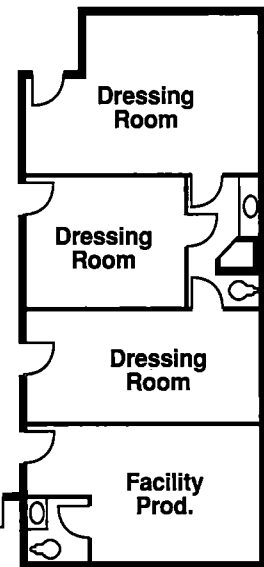
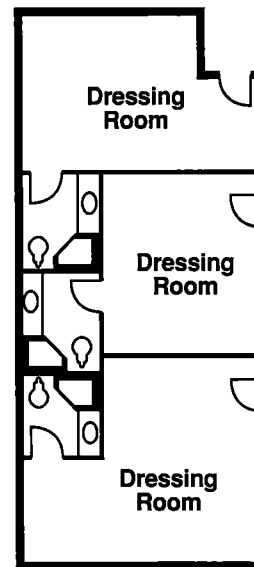
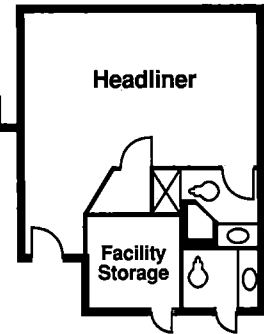
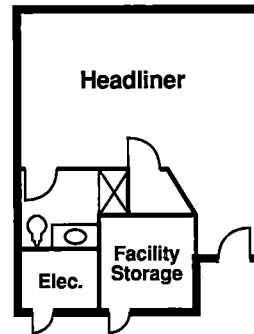
Backstage Parking

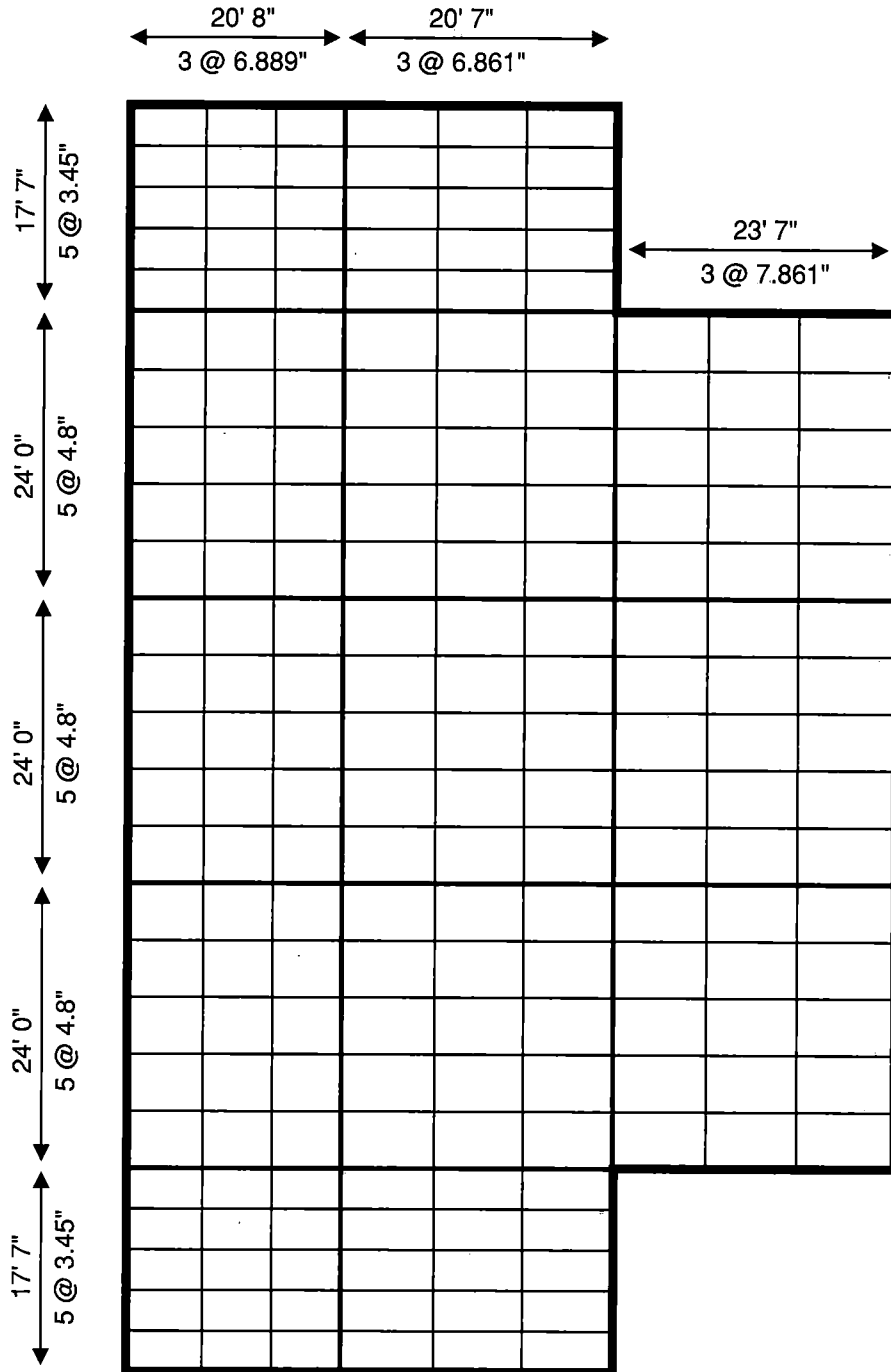


Enlarged Stage Floor Plan



Dressing Room Building Floor Plan





Stage Rigging Grid

1991 PRODUCTION AND PLANNING GUIDE

**Frequently Called
International Points**

Australia 61	Greece 30	Portugal 351
Melbourne 3	Athens 1	Lisbon 19
Sydney 2	Rhodes 241	
	Hong Kong 852	Singapore 65
Austria 43	Hong Kong 5	routing codes not required
Innsbruck 5222	Kowloon 3	South Africa 27
Vienna 222	Ireland 343	Cape Town 21
	Dublin 1	Pretoria 12
Belgium 32	Galway 91	Spain 34
Antwerp 31	Israel 972	Barcelona 3
Brussels 2	Haifa 4	Las Palmas (Can. Is.) 28
	Jerusalem 2	Madrid 1
Brazil 55	Tel Aviv 3	Seville 54
Brasilia 61	Italy 39	Sweden 46
Rio de Janeiro 21	Florence 55	Goteborg 31
Sao Paulo 11	Naples 81	Stockholm 8
	Rome 6	Switzerland 41
Denmark 45	Venice 41	Berne 31
Aalborg 8	Japan 81	Geneva 22
Copenhagen 1 or 2	Hiroshima 822	Lucerne 41
	Tokyo 3	Zurich 1
Ecuador 593	Yokohama 45	Unt. Kingdom 44
Cuenca 4	Luxembourg 352	Belfast 232
Quito 2	routing codes not required	Cardiff 222
El Salvador 503	Netherlands 31	Edinburgh 31
routing codes not required	Amsterdam 20	Glasgow 41
	Rotterdam 10	Liverpool 51
Finland 358	The Hague 70	London 1
Helsinki 0	New Zealand 64	Vat. City 39
	Auckland 9	all points 6
France 33	Wellington 4	Venezuela 58
Bordeaux 56	Norway 47	Caracas 2
Marseilles 91	Bergen 5	Maracaibo 61
Nice 93	Oslo 2	
Paris 1		
Germany 49		
Berlin 30		
Bonn 228		
Frankfurt 611		
Munich 89		

THE RITZ-CARLTON ST. LOUIS

*With Traditions as Grand
as the Mississippi*

The warmest of welcomes sets the tone at The Ritz-Carlton, St. Louis, located in Clayton, just 10 minutes from the airport and 15 minutes from the Riverport Amphitheatre. Our beautifully appointed and spacious accommodations include French doors that open to balconies allowing fresh air into every room. Private Club floors are available, as well as a fully equipped health club with an indoor swimming pool. Of course, service throughout is personal and uncompromising. And for those late night performances, 24 hour room service is available.

For individual reservations or group information,
please call (314) 863-6300.



THE RITZ-CARLTON
ST. LOUIS

One Ritz-Carlton Drive, St. Louis, Missouri 63105