

Originally Processed With FOIA(s):

S

FOIA Number:

S

FOIA MARKER

This is not a textual record. This is used as an administrative marker by the George Bush Presidential Library Staff.

Record Group/Collection: Donated Historical Materials
Collection/Office of Origin: Frieden, Lex, Collection
Series: Related Materials
Subseries: Conferences

OA/ID Number: 52081
Folder ID Number: 52081-004

Folder Title:
Conference: Task Force Meeting [1998]

Stack:

Row:

Section:

Shelf:

Position:

Extra Copies of the Hometown Award plaques are still available until August 6!
 You can still order extra copies of the Hometown Award Plaques. Price is \$ 54.00 each. Return this order form with your check or other payment to the address given before August 6. The Plaques will be engraved with the category name and the title of the tape. If you wish, we can engrave a third line with the name of a producer or other honoree. If you would like a specific name included, print or type that name or names in the line "Name of producer(s). If necessary, you can use the space at the bottom of the page to list additional names. We will mail the plaques to you. Be sure to fill in the location to which you would like your plaques mailed.

After August 6 it will no longer be possible to order 1998 Hometown Award plaques. Act Now!

Please order for me the extra Hometown Award plaques as indicated below:

Tape Control No.	Title		
Name of producer (s)			
Please use one order form for each Winning entry. If you won more than one award, use a separate order form for each set of plaques you order.	Number of plaques	Price each	Total
		x \$54.00	= \$
	Price is \$54.00 each .		
	Shipping (from table at left) \$ _____		
		Total Cost	\$ _____

Shipping Costs	
No. of Plaques	Shipping Charges
1 - 2	\$5.00
3 - 5	6.00
6 - 8	7.00
9 - 10	8.00
more than 10	10.00

Send payment for this amount to:

Steven Fortriede
Hometown Awards
Allen County Public Library
900 Webster Street
Fort Wayne, Indiana 46802

A/C
 (219)

Make checks payable to:
Alliance for Community Media

Ship Plaques to:

Name: _____

Organization: _____

Address: _____

City: _____ State/Province _____ Zip/Postal Code _____

Telephone Numbers _____ Day _____ Evening

X-Sender: lfrieden@bcm.tmc.edu
Date: Wed, 15 Jul 1998 23:14:33 -0500
To: funchess@bcm.tmc.edu
From: Lex Frieden <lfrieden@bcm.tmc.edu>
Subject: lex

add-betts
peter t
ritzres
metrores
h-cellular
beckyogle
lf-fonebill
marie
q-invite to aug mtg
amtrak la-dec

monroe call?
uh?
cancel trips--
merrie pearson interview
wid update
rwj,dbtac calls

*memo to LA
re text*

Lex Frieden e-mail: <lfrieden@bcm.tmc.edu>

Senior Vice President -- TIRR <http://www.tirr.org>
The Institute for Rehabilitation and Research
Director -- ILRU Program <http://www.ilru.org>
Independent Living Research Utilization
Professor -- Baylor College of Medicine
Department of Physical Medicine
and Rehabilitation <http://www.bcm.tmc.edu>

1333 Moursund voice: (713) 797-5283
Houston, TX 77030 fax: (713) 799-7095

Call Fidelity re statement

60.30

0.20

6.30

9.54

0.57

0.20

0.04

5.99

3.17

3.12

0.20

1.90

8.50

5.98

3.74

8.27

2.40

2.40

\$85.11

\$22.50 to Joyce's

cell phone

calls to home #

telephone

charge

\$62.41

60.30
2.81

2.31

0.14

2.15

TO: Lex Frieden, Senior Vice President
The Institute for Rehabilitation & Research
713/799-7095

FROM: Sarah Gevers, Hager Sharp, for the U.S. Department of Education/OSERS
202/842-3600, ext. 227

RE: Confirmation & Reimbursement of Expenses for the March 5th Focus Discussion
in Washington, D.C.

The U.S. Department of Education/OSERS is pleased you will be able to offer your perspective on how OSERS is doing in terms of its operations, and what you think OSERS' priorities and strategic goals should be in the future. The following details will explain the reimbursement procedure and hopefully make your travel to Washington smoother. Prior to your trip, I do have one request -- At your earliest convenience, please fax your bio or resume to my attention at 202/842-4032. Feel free to call at any time if this memo doesn't answer all of your questions, and I look forward to meeting you in March.

The focus discussion will be held Thursday, March 5 in the Gemini Room (please note there has been a room change) at the Holiday Inn Capitol, 550 C Street SW. Breakfast will be served in the room beginning at 8:15 a.m.; the meeting will convene promptly at 9:00 a.m. and end at 4:15 p.m.

Travel to and From Washington, DC

All air fares to and from Washington, DC have been paid for. Your travel options once in DC include a Washington Flyer shuttle to the city and then a short cab ride to the hotel from their terminal at 15th/K Streets (call 1-800-BLUEVAN to reserve a ticket), or, if you need wheelchair accessible transportation, you can call Diamond Transportation at 703/548-6500. Please call a couple of days in advance for both services. The Metro is also an option if you are arriving at National airport.

Local Transportation

Taxi cab and public transportation to and from the airport is reimbursable. Please submit all receipts for cab, shuttle and metro rides. Please also submit parking receipts and be sure to track your mileage. Mileage will be reimbursed at a rate of \$.31 per mile.

Hotel Accommodations

Lodging is being provided at the Holiday Inn Capitol located at 550 C Street, SW. Their number is (202) 479-4000. If you have not already booked your room, please do so TODAY. Let them know your room is being reserved under the name USDE/OSERS Focus Group. If you have any problems, please give me a call. Please submit your room receipt and you will be reimbursed. We will also reimburse one phone call, not to exceed \$7.00.

Per Diem

A per diem of \$38 will be provided for all out-of-town participants.

Meals

A continental breakfast will be served on March 5th beginning at 8:15 a.m. Lunch will also be served.

Please submit all receipts by March 15, 1998 to the attention of:

Sarah Gevers, Hager Sharp
1090 Vermont Avenue, NW, Third Floor
Washington, DC 20037

DIAMOND TRANSPORTATION SERVICES, INC.

3025 MT. VERNON AVE.
ALEXANDRIA, VA 22305
703-548-6500
703-684-8992

FROM : Leigh Willis

TO: Lex Freiden

RE: TRANSPORTATION FOR ONE WHEELCHAIR ACCESSABLE VAN..

PICK-UP DATE: March 4, 1998
PICK-UP TIME: 5:10pm
PICK-UP LOCATION: Dulles Airport
Continental (Baggage Claim)
DESTINATION: Holiday Inn
550 C ST. NW
COST: \$85.00

Lex happy to hear from you again maybe soon we will meet be good.

THANK YOU FOR USING THE SERVICES OF DIAMOND TRANSPORTATION.


Leigh Willis
Manager

DIAMOND TRANSPORTATION SERVICES, INC.

3025 MT. VERNON AVE.
ALEXANDRIA, VA 22305
703-548-6500
703-684-8992

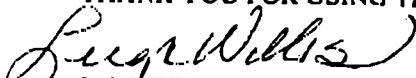
FROM : Leigh Willis

TO: Lex Freiden

RE: TRANSPORTATION FOR ONE WHEELCHAIR ACCESSABLE VAN.

PICK-UP DATE:	March 6, 1998
PICK-UP TIME:	3:00pm
PICK-UP LOCATION:	HOLIDAY INN 550 C STREET NW
DESTINATION:	DULLES AIRPORT
COST:	\$85.00

THANK YOU FOR USING THE SERVICES OF DIAMOND TRANSPORTATION.


Leigh Willis
Manager

Alliance for Community Media Presents

1998 Hometown Video Festival Awards Ceremony

21st Annual Celebration of
Community Media Programming

Thursday, July 9
Portland Hilton



**ALLIANCE
FOR
COMMUNITY
MEDIA**

National Office
666 11th Street, NW, Suite 806
Washington, DC 20001-4542

About Public Access, J. J. Lacrampe, **B - TV,** Berkeley Community Media, Non-professional, Single

About Public Access, Pamela Brundell/Greg Socher, **Olelo Mission,** 'Olelo: The Corporation for Community Television, Professional, Single

Access Program Promo, Garo Alexanian, **Democracy in Crisis,** Queens Public Television, Non-professional, Single

Access Program Promo, City Net 30 Production Dept. Portland Cable Access, **"Community Connection",** Portland Cable Access, Professional, Single

Educational, E. Frank Bluestein/Leonid Mazor/Ginger Hilbun, **Crosstalk,** Germantown Community Television, Non-professional, Series

Educational, Scott Hawley, **Success Stories,** CCTV Salem, Oregon, Non-professional, Single

Educational, George Callaghan/Gail Eskew, **Parks Plus,** Fairfax County Government Channel 16, Professional, Series

Educational, Tom Lester, **Math Matters,** Sacramento Educational Cable Consortium, Professional, Single

Election Coverage, Chris Cassidy, **1997 Wilmington Town Election,** Wilmington Community Television, Non-professional, Single

Videotext/Bulletin Board, Tony Ighani, **CityText,** L.A. CityView 35 City of Los Angeles, Professional, Single

Videotext/Bulletin Board, Tom Dea, **Sexual Predators,** City of Tampa GATV, Professional, Single

Videotext/Bulletin Board, Teresa Rury, **Videotext/Bulletin Board,** Mountain View Community Television, Professional, Single

Arts, John Squier, **Cartoon Classroom,** Nutmeg Public Access TV, Non-professional, Series

Arts, Karen Backmann/Peter Perry Production Parade, **"Video Talk",** Rogers Community TV, Vancouver, Non-professional, Single

Arts, Ann Goldenberg, **Off the Wall,** Tampa Educational Cable Consortium, Professional, Series

Arts, Ann Goldenberg, **Off the Wall,** Tampa Educational Cable Consortium, Professional, Single

Children, Michael Bays, **Faith Presents,** Comcast Cable. Waterford, MI, Non-professional, Series

Children, J. M. Rutstein, **Caitlin's Rainbow: Brazil/Save the Rainforest,** Newton Communication Access Center, Non-professional, Single

Children, Ann Goldenberg, **Summer Reading Club,** Tampa Educational Cable Consortium, Professional, Series

Election Coverage, Lori A. Ziebarth, **Local Vote '97,** Northwest Community Television, Professional, Single

Empowerment, Bruce Kelly, **Are We On Yet?,** Community Television of Santa Cruz County, Non-professional, Series

Empowerment, Renee Cargerman Dolezal, Ph.D., **Teen Moms Only: Responsible Moms & Dads,** Chicago Access Corp., Non-professional, Single

Gay/Lesbian, Bill Farrick, **The Woody Farrick Show,** Salem Access Television, Non-professional, Series

Gay/Lesbian, Joan Jubela, **Celebrating Latina Lesbians,** Manhattan Neighborhood Network, Non-professional, Single

Differently-abled, Phil Wright / Gerard Moscatelli / Tony Williams, **Tony Williams Show,** Duluth-Superior Public Access TV, Non-professional, Single

Documentary:Event, Paul Tervel, **Loose at the DNC,** Chicago Access Network Television, Non-professional, Single

1998 WINNERS

Children, Larry Radner/Joanne Yacavone, **The Orchard,** MediaOne of Springfield, MA, Professional, Single

Community Media Issues, Kevin Walker, **Many hands make light work - Unless you're making soup,** Salem Access Television, Non-professional, Single

Community Media Issues, Julius Fisher/Heather Nicolas, **Working TV "Bill C-91: Digging the grave of Medicare?",** Rogers Community TV, Professional, Single

Entertainment, Glenn Farez, **War,** TCI Marin 31, Non-professional, Single

Entertainment, Darin Sodemani / Warren Yamada, **Sleepless,** 'Olelo: The Corporation for Community Television, Non-professional, Single

Entertainment, Lee Wouffe/Bob Miles, **World of Guitar,** Suburban Community Television, Professional, Series

Entertainment, Joe Johnson, **Martian Arts Theatre,** Orion Cable Commission, Professional, Single

HOMETOWN VIDEO

Gay/Lesbian, Joe Liberatore, **Gay News Network,** Fairfax Cable Access, Professional, Series

Documentary:Event, Eric Angott, **Tim Pope Memorial Play Structure,** Time Warner Cable of Oakland County, Professional, Single

Documentary:Event, Rick Bravo, **Behind The Silver Badge - TNT,** WLRN Channel 17, Miami Florida, Professional, Single

Computer/Video Art, Eric Wojtaszek/Center for Knowledge Communication, **Leche, Mi Amore,** Wakefield Community Access Television, Non-professional, Single

Computer/Video Art, SECC / Agriculture in the Classroom, **Imagine This,** Sacramento Educational Cable Consortium, Professional, Single

Cultural/Ethnic Diversity, Keith Kalani, **Akana Manaleo,** 'Olelo: The Corporation for Community Television, Non-professional, Series

Religious/Inspirational, Audre (Audrey S. Arbe), **"Aurora Borealis with Audre",** Manhattan Neighborhood Network, Non-professional, Series

Religious/Inspirational, Andrea Levermore/William Walker III, **Teen Gospel,** DCTV, Non-professional, Single

Religious/Inspirational, Abinadab A. Israel, **The Universe of Yahweh,** Access Sacramento, Professional, Single

Gay/Lesbian, Joe Liberatore, **Gay News Network,** Fairfax Cable Access, Professional, Single

Government Profile, Roberta Harper/Claudia Kurtzworth, **Health Scope,** LCTV, Non-professional, Series

Documentary: Profile, Tanya Urcavich, Ph.D., **Out of the Wilderness,** WBRW Channel 6, Non-professional, Single

Documentary: Profile, Dan Hunt, **Her Place In History,** MediaOne of Springfield, MA, Professional, Single

Cultural/Ethnic Diversity, Casa Aztlan Youth Video Project with CAN TV, **Pilsen Diaries,** Chicago Access Network Television, Non-professional, Single

Cultural/Ethnic Diversity, Jorge Monzon, **Sacramento's Cultures Sacto Youth Symphony,** Access Sacramento, Professional, Series

Cultural/Ethnic Diversity, Michael P. Keeping, **Generations,** Rogers Community TV-Vancouver, Professional, Single

Talk Show: Entertainment, Herlema Owens, **Herlema's Doing It!,** Queens Public Television, Non-professional, Series

Talk Show: Entertainment, Scott Zak, **Inside our Voice,** RBTV Cable Excellence, Non-professional, Single

Talk Show: Entertainment, Teri Morris/ Bill Dwight/ Dana Gentes, **The Bill and Dana Show,** MediaOne Northampton Community Television, Professional, Series

Religious/Inspirational, Donald R. Hunt, **Focus on Faith,** Service Electric Cable TV, Professional, Single

Government Profile, Brenda E. Smith, **The Reading Composting Area: Trash Heap or Town Treasure,** MediaOne of Reading, Non-professional, Single

Government Profile, Tamar Siegel, **Issues and Answers with Attorney General Scott Harshbarger,** MediaOne of Lawrence, MA, Professional, Series

Documentary: Public Awareness, Paul Tervel, **Eco Hood,** Chicago Access Network Television, Non-professional, Single

Documentary: Public Awareness, Production Department/CITYNET 30, **Oregon Operation Lifesaver: Stay Off! Stay Alive!** Portland Cable Access/ CITYNET 30, Professional, Single

Fundraising/Teleton, Scott Hawley, **Ever the Dragon,** CCTV Salem, Oregon, Non-professional, Single

Fundraising/Teleton, Ann Goldenberg, **Fall Teleton,** Tampa Educational Cable Consortium, Professional, Series

Fundraising/Teleton, Ken Willard, **Mad Duck Triathlon,** Michigan City Public Access Ch 27., Professional, Single

Talk Show: Entertainment, Cathy Wise, **More than Books,** Access Fort Wayne, Professional, Single

Talk Show: Informational, Beth Lasch, **F# Sharp TV,** Manhattan Neighborhood Network, Non-professional, Series

Talk Show: Informational, Patrice Leslie, **Afterhours,** Rogers Community TV-Vancouver, Non-professional, Single

Talk Show: Informational, Peter Helm/David Ingram/Furio Sorrentino, **Ingram,** Rogers Community TV, Professional, Series

Talk Show: Informational, Carol Herrera/ Lex Friedn/ Mezgebe Desta, **Focus on Abilities,** City of Houston Municipal Channel, Professional, Single

Government Profile, Michael Majdic, **United States Newspaper Project: Oregon,** University of Oregon Instructional Media Center, Professional, Single

FESTIVAL

Informational, Matthew Schuster/ HOM-TV Interns, **Meridian Magazine,** HOM-TV of Meridian Township, Non-professional, Series

Informational, Scott Hawley, **Success Stories,** CCTV Salem, Oregon, Non-professional, Single

Informational, Al Clarke, **Brick City,** Cablevision of Newark, Professional, Series

Informational, Chris Seufert, **Lobstering on the Benjo,** Cape Cod Community Television-C3TV, Professional, Single

Youth, Kenneth Mechler, **Rheedlen Youth Council - Family Video Workshop,** Manhattan Neighborhood Network, Non-professional, Series

Youth, Will Neumeyer, **Video Voice,** Access Fort Wayne, Non-professional, Single

Teleplay, Ronald Getty-Marcroft, **The Burglars,** Torrance Community Television, Non-professional, Single

Teleplay, Denver Rochun, **Ammanon,** Orion Cable Commission, Professional, Single

Performing Arts, Nadine Maynard/ James Gillis, **Jazzfest,** Bloomfield Community Television, Non-professional, Series

News, Rene Blatte, **Community Calendar,** City of Dearborn Television, Non-professional, Series

News, Ed Schehl, **The Green Report,** Community Television of Santa Cruz County, Non-professional, Series

News, Lori A. Ziebarth, **Cable 12 News,** Northwest Community Television, Professional, Series

Innovative, Rik Little, **The Church of Shooting Yourself,** Manhattan Neighborhood Network, Non-professional, Series

Innovative, Scott Hawley, **Sunscreen,** CCTV Salem, Oregon, Non-professional, Single

Innovative, Kevin Qualls, **JAT 101: Introduction to Communication Media,** Paducah Community College Access Channel 2, Professional, Series

Innovative, George Callaghan/ Gail Eskew, **Information Avenue,** Fairfax County Government Channel 16, Professional, Series

Innovative, Douglas DeVore & Dennis Dawson, **Web Wizards,** Mid-Peninsula Access Corporation, Professional, Single

Live Format, Clinton Wittstruck, **The Chess Show, starring Cybele and Botielus,** Portland Cable Access, Non-professional, Series

Live Format, Renee Cargerman Dolezal, Ph.D., **Teen Moms Only: Welfare,** Chicago Access Corp., Non-professional, Single

Performing Arts, Paul Fornelli, **Bourbon Street Musician,** Torrance Community Television, Non-professional, Single

Performing Arts, Liz Monnier / Fort Wayne Dance Collective, **Fort Wayne Dance Collective Presents,** Access Fort Wayne, Professional, Series

Performing Arts, Steve Ross, **United States Air Force "Tops in Blue",** DATV Dayton Access Television, Professional, Single

Performing Arts, Anthony Hope, **Big Band Swing Time,** Time Warner, Professional, Single

Instructional/Training, E. Frank Bluestein/ Leonid Mazor/Karen Dean/, **I did it myself,** Germantown Community Television, Non-professional, Series

Instructional/Training, Ann Evry, **Art Strokes # 120,** Montgomery Community Television, Non-professional, Single

Instructional/Training, Cheryl Magill, **For the Love of Wisdom,** Howard Community College, Professional, Series

Instructional/Training, Lisa Ahrons, **Fire Safe Marin: A Homeowner's Guide to Fire Prevention,** TCI Marin 31, Professional, Single

Live Format, Manuel Fonseca/Steven Wallace/Gary Wirachowsky, **Daytime,** Rogers Community TV, Professional, Series

Live Format, Mayor Dick Greco/ Mindy Snyder, **The Mayor's Hour,** City of Tampa GATV, Professional, Single

L.O. Program promotion, Scott Zak, **Syndication Promo,** RBTV Cable Excellence, Non-professional, Single

Public Service Announcement, Scott Hawley, **Volunteer,** CCTV Salem, Oregon, Non-professional, Single

Public Service Announcement, Martin O'Neill and John Ward, **Mission Impossible,** Bloomington Community Access Television, Professional, Single

Overall Excellence - Public Access, Arlington Community Television, BUDGET, \$250,000 - \$399,000

Overall Excellence - Public Access, Cambridge Community Television, BUDGET, Over \$400,000

Instructional/Training, John Richardson, **Bully Beware: Taking Action against Bullying,** Rogers Community TV, Professional, Single

International, Patricia Ando, **Gourmet Liaisons' Navigating Gascony,** TV 36 Summit New Jersey, Non-professional, Single

International, Joseph Rossi, **Travel Exchange-The Milford Track Guided Walk,** Rogue Valley Community Television, Non-professional, Single

International, Roberto Arevalo, **Sin Maquillaja (Without Make-up),** Somerville Community Access TV, Professional, Single

L.O. Program promotion, Pat Lee & SNCAT, **Harness the Power, Liberate Your Mind,** Sierra Nevada Community Access Television, Professional, Single

Seniors, Sandy Patterson/ Denise McLeod, **Senior Health Watch,** Waterford Senior Access Channel, Non-professional, Series

Seniors, Ruth Abrams, **The Fabric of Life,** Brookline Access TV, Non-professional, Single

Sports: Entertainment, Al Pabon, **Slick Mick's Bodyslam Revue,** Northwest Community Television, Non-professional, Series

Sports: Entertainment, Jesse Cory, **The 13th Grade,** WBRW Channel 6, Non-professional, Single

Overall Excellence - Public Access, Brookline Access TV, BUDGET, Under \$250,000

Overall Excellence - Local Origination, Francisco, Cablevision of Newark, BUDGET, \$250,000 - \$399,000

Overall Excellence - Local Origination, Daniels Cablevision KDCI, BUDGET, Over \$400,000

Magazine Format, Burt Mummolo/Alan Vega/ Paul Vega / Ben Avila, **The Mr. Benenburt Show,** Newton Communication Access Center, Non-professional, Series

Magazine Format, Tony Ighani, **L.A. Fire! Series,** L.A. CityView 35 City of Los Angeles, Professional, Series

Sports: Entertainment, John Jacobson / Jay Wilcox / Lisa Carter, **John and Jay's SportsJam,** Northwest Community Television, Professional, Series

Sports: Entertainment, Jeffrey Alan Spisak, **Garrett Railroad Football 1997,** Access Fort Wayne, Professional, Single

Sports: Event, CCTV and its Awesome Volunteers, **CCTV Game of the Week: McNary v. Canby,** CCTV Salem, Oregon, Non-professional, Single

Sports: Event, Daniel Cabral, **High School Football,** New Bedford Cable Access Television, Professional, Series

Sports: Event, Donald R. Hunt, **TV 2 Sports Football,** Service Electric Cable TV, Professional, Single

Overall Excellence - Local Origination, MHTV-3 MediaOne of Marblehead, MA, BUDGET, Under \$250,000

Overall Excellence - Local Origination, Mountain View Community Television, BUDGET, Under \$250,000

Overall Excellence - Government Access, City of Sterling Heights-Sterling Heights Television, BUDGET, \$250,000 - \$399,000

Overall Excellence - Government Access, City of Westland, BUDGET, \$250,000 - \$399,000

Overall Excellence - Government Access, City of Tampa, City of Tampa GATV, BUDGET, Over \$400,000

Making a Difference, Scott Hawley, **Volunteer,** CCTV Salem, Oregon, Non-professional, Single

Making a Difference, Julius Fisher/ Heather Nicolas, **Working TV "Labour on Television",** Rogers Community TV, Professional, Single

Municipal, Matthew Schuster/ HOM-TV Interns, **Meridian Magazine,** HOM-TV of Meridian Township, Non-professional, Series

Municipal, Barry J. Welch, **The Night Before Christmas: A Municipal Reading,** Quincy Telecommunications Corp., Non-professional, Single

Municipal, Valerie Bey/ Gail Eskew, **County Magazine,** Fairfax County Government Channel 16, Professional, Series

Municipal, Kevin Hoag, **Abandoned Dogs,** Hillsborough Television, Professional, Single

Music Video, John Hawkins, **Time moves so Slow,** Saint Paul Neighborhood Network, Non-professional, Single


Music Video, Bill Gesaman/ Lori Pomranka/ Jane Tekiele, **Farewell to our 5th Graders,** Waterford Educational Access Channel 46, Professional, Single

Overall Excellence - Government Access, Wheaton Community Television, BUDGET, Under \$250,000

Overall Excellence - Educational Access, Palomar College, BUDGET, \$250,000 - \$399,000

Overall Excellence - Educational Access, Tampa Educational Cable Consortium, BUDGET, Over \$400,000

Overall Excellence - Educational Access, Manchester Community Television, BUDGET, Under \$250,000



**The Hometown Awards Festival
wishes to thank the following
people/organizations for making
the festival possible:**

The Central States Board, for taking
on the project in the first place.

Rick Hayes, Information Services Committee Chair

Hap Haasch, Judging site Coordinator

Steven Fortriede, Hometown, Coordinator

Liz Schillinger, CCTV Producer/Training Coordinator

Scott Hawley, Editor

Deb Vinsel, Hometown Task Force

Kelly Matthews, Director - Membership Services

**1998 Hometown Video
Festival Judging Sites**

Access 4 University of Illinois at Springfield

AccessVision

Cablevision of Newark

Cape Cod Community Television / C3TV

Cincinnati Community Video

Citizens Television

Community Access Center

Community Media Center of Santa Rosa

Community Television Network

Community Television of Knoxville

Community TV of Santa Cruz County

Dallas Community Television

DATV

Defiance Community TV

Duluth-Superior Public Access Television

ECMC

Greensboro Community Television

GRTV

HOM - TV

Lowell Telecommunications Corp

M-PACT

Macomb Cable Network

MATA

Miami Valley Cable Council

Mid-Peninsula Access Corp

Midland Community Television

Minneapolis Telecommunications Network

Missoula Community Access Television

Multnomah Community TV

North Suburban Access Corp

'Olelo: The Corporation for Community Television

Piscataway Community Television Center

Pittsburgh Community Television

Saint Paul Neighborhood Network

Salem Access Television Corp

Somerville Community Access Television

South Washington County Telecommunications Commission

Southwestern Oakland Cable Commission

Thurston Community Television

Torrance Community Television

Waycross Community Media

WBRW 6

WCTV

Prof 55 and 1 Single
City of the Municipal Council

Extra Copies of the Hometown Award plaques are still available until August 6!

You can still order extra copies of the Hometown Award Plaques. Price is \$ 54.00 each. Return this order form with your check or other payment to the address given before August 6. The Plaques will be engraved with the category name and the title of the tape. If you wish, we can engrave a third line with the name of a producer or other honoree. If you would like a specific name included, print or type that name or names in the line "Name of producer(s). If necessary, you can use the space at the bottom of the page to list additional names. We will mail the plaques to you. Be sure to fill in the location to which you would like your plaques mailed.

After August 6 it will no longer be possible to order 1998 Hometown Award plaques. Act Now!

Please order for me the extra Hometown Award plaques as indicated below:

Tape Control No.	Title
Name of producer (s)	

Please use one order form for each winning entry. If you won more than one award, use a separate order form for each set of plaques you order.

Number of plaques	Price each	Total
	x \$54.00	= \$
Price is \$54.00 each.		
Shipping (from table at left)		\$

Shipping Costs	
No. of Plaques	Shipping Charges
1 - 2	\$5.00
3 - 5	6.00
6 - 8	7.00
9 - 10	8.00
more than 10	10.00

Total Cost	\$
Send payment for this amount to:	
Steven Fortriede Hometown Awards Allen County Public Library 900 Webster Street Fort Wayne, Indiana 46802	

A/C (219)

Make checks payable to:
Alliance for Community Media

Ship Plaques to:

Name: _____

Organization: _____

Address: _____

City: _____ State/Province _____ Zip/Postal Code _____

Telephone Numbers _____ Day _____ Evening _____

Talk Show: Informational
Carm Herrera / Lex Fricken
Me 2 globe Dobra, Forum in Ann Arbor

NRH and NIH Clinical Center Sign Cooperative Agreement in Research, Training, and Medical Treatment

The National Rehabilitation Hospital (NRH) and the Warren Grant Magnuson Clinical Center at the National Institutes on Health (NIH) have signed an agreement to join efforts in research, training, and medical treatment of individuals with disabilities caused by illness and injury.

The agreement enables NRH and the NIH Clinical Center to collaborate in several areas of mutual interest and to share their expertise for different clinical populations. While NRH offers comprehensive rehabilitation for individuals with significant loss of function, the loss is usually the result of more common causes such as stroke and traumatic injury. NIH provides rehabilitation for individuals who have lost function because of disease, often rare neurologic conditions, or cancer. The agreement will give NRH physicians and researchers a chance to work with conditions that are less common while offering NIH physicians and researchers a chance to work with more common functional problems.

Under the agreement, staff physicians at NRH and the NIH Clinical Center will serve as preceptors for physicians in advanced training as fellows and residents. In addition, NRH and NIH staff have identified four other priority areas for development: (1) resident training in research, (2) biomedical and biomechanical applications, (3) development and implementation of performance-based outcome and quality-of-life measures, and (4) research on secondary health conditions in disabled populations.

"I am delighted that our hospital is entering into this agreement with the NIH Clinical Center because of its excellent reputation and the complementary clinical and research strengths our two organizations will provide" says NRH President and CEO, **Edward Eckenhoff, MHA**. "This agreement opens the door for invaluable learning and research opportunities for staff from both institutions. I am particularly excited about the research opportunities that this agreement provides."

"This alliance offers the best of both worlds," says NIH Clinical Director, **John Gallin, MD**. "It will enhance care for patients at both institutions while enriching the learning environment for staff physicians in both settings."

The NIH Clinical Center supports about 1,000 clinical investigations on a wide range of diseases including AIDS, cancer, heart disease, neurologic disorders, diabetes, and arthritis among patients from across the country, many of whom spend time as an inpatient at the Clinical Center.

A group of NRH and NIH physicians and researchers are now working to implement the agreement in the priority areas. They include **Gerben DeJong, PhD**, **Michael Rosen, PhD**, and **Susan Miller, MD** of NRH, and **Lynn Gerber, MD**, **Jeanne Hicks, MD**, **Jay Shah, MD**, and **Steven Stanhope, MD** of NIH. ❖

INSIDE THIS ISSUE

- Helix/Medlantic System Merger Presents New Opportunities for NRH Research Center 2
 - National Capacity Survey Evaluates Impact of Managed Care on Rehabilitation 3
 - Rates of Post-Stroke Rehabilitation Vary Dramatically in California 6
 - Assistive Technology Research Center*
 - VREye Sheds New Light on Perceptual Disabilities. 9
 - NIDRR Grant Opportunity to Explore Telerehabilitation . . 9
-

Helix/Medlantic System Merger Presents New Opportunities for NRH Research

The merger of two large health systems in Baltimore and Washington has opened up new opportunities for research at the NRH Research Center and its parent organization, the Medlantic Research Institute (MRI). Effective July 1, the 5-hospital Helix system in Baltimore and the 2-hospital Medlantic system in Washington merged to become a new \$1.4 billion per year health care system, making it the 15th largest nonprofit health care system in the nation. The combined system also offers numerous specialty care clinics, 65 primary care sites, hospice care, nursing home and subacute care, adult day care, and durable medical equipment services.

For the NRH Research Center, the merger means that the Center has acquired a new network of colleagues within the Helix system. "This expands our venues for research and enables us to forge new working relationships with our Helix partners," explains NRH Research Center Director **Gerben DeJong, PhD**. "This is already beginning to happen. We are fortunate to have colleagues, such as **Barbara deLateur, MD**, at Helix's Good Samaritan Hospital and Johns Hopkins, and we already have collaborated in the development of individual research projects. We see the merger as part of a growing opportunity for both the Center and our Helix colleagues."

Research Update

Published by the NRH Research Center

Gerben DeJong, PhD *Director, NRH Research Center*
Michael Rosen, PhD *Director, NRH Assistive
Technology Research Center*
Sabrina Smith, MHA *Administrative Director*

For information, contact:

Olga Elizabeth Hayes *Editor*
NRH Research Center
1016 16th Street, N.W., 4th Floor
Washington, D.C. 20036

(202) 466-1900 (Voice)
(202) 466-1911 (Fax)
E-mail: oehl@mhg.edu

The NRH Research Center's parent organization, the Medlantic Research Institute (MRI), is conducting a system-wide 180-day review of how the Helix and Medlantic facilities can develop a stronger and more integrated research program. The system-wide review is being conducted under the leadership of MRI President **Barbara Howard, PhD**.

The Helix-Medlantic merger is part of a larger trend in American health care where health systems have joined forces in order to secure market share and negotiate more favorable contracts with managed care health plans. ❖

Impact of Managed Care on People with Disabilities is Measured by NRH-RC and Other Disability Organizations

The NRH Research Center, through its Research & Training Center on Managed Care and Disability, is surveying consumers to determine the impact of managed care on people with disabilities. This multi-stage survey is the first of this magnitude, with questionnaires going out to 2,000 individuals with disabilities nationwide to determine their access to care and the quality of care they receive. Responses of individuals covered by managed care will be compared with responses of individuals covered under fee-for-service arrangements.

The Center is collaborating with the United Cerebral Palsy Association, the National Multiple Sclerosis Society, the National Spinal Cord Injury Association, and the Arthritis Foundation to recruit a broad range of survey participants. The first wave of the survey will be administered this fall, with the second and third waves executed in subsequent years. ❖

National Rehabilitation Hospital Named One of America's Best Hospitals

For the fifth time in eight years, the National Rehabilitation Hospital (NRH) was named by *U.S. News & World Report* as one of the nation's best hospitals for medical rehabilitation. The findings appeared in the July 27 issue, the magazine's ninth annual "America's Best Hospitals" guide. NRH has the distinction of being the youngest rehabilitation hospital to be named to the list.

"Our mission is to serve the community as a regional and national leader in rehabilitation services through

(Continued on page 3)

(Continued from page 2)

quality patient care, rehabilitation research, education and training, assistive technology, and advocacy for the rights of persons with disabilities," says NRH President and CEO **Edward A. Eckenhoff**. "The survey results indicate that our peers in the medical rehabilitation community believe that we are, indeed, fulfilling our mission. As a young hospital, we are especially pleased to be ranked for the fourth consecutive year among other renowned rehabilitation hospitals which have been in existence many more years than NRH. Our fine staff sets high standards for itself and looks forward to continuing to provide the very best care available for many years to come."

U.S. News & World Report conducted a nationwide survey of rehabilitation physicians to compile the listing of outstanding rehabilitation hospitals. The 21 facilities named to the list were selected from over 1,000 hospitals nationwide that provide rehabilitation medical care. ❖

National Capacity Survey Evaluates Impact of Managed Care on Rehabilitation

Results of a national survey of rehabilitation programs conducted as part of the Research & Training Center on Medical Rehabilitation Services and Health Policy provide valuable data that establishes a baseline for changes in the medical rehabilitation industry. The National Survey of Rehabilitation Capacity, which delineates the elements of U.S. medical rehabilitation programs, was conducted in conjunction with the **American Hospital Association (AHA) Section on Rehabilitation**, the **American Medical Rehabilitation Providers Association (AMRPA)**, and **CARF...The Rehabilitation Commission**.

Survey responses from 309 rehabilitation organizations, including data for 243 acute programs, 80 subacute programs and 375 outpatient programs, were received and analyzed. Apart from the wealth of descriptive information the survey responses provided, researchers now have data that sheds light on the impact of managed care on rehabilitation providers and the changing nature of the services they provide.

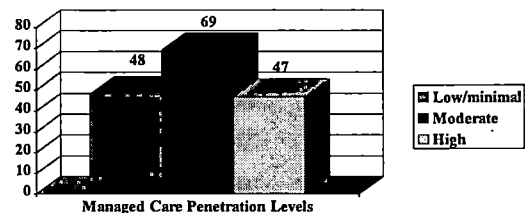
In the survey, rehabilitation organizations were asked to estimate the current degree of "managed care penetration" (MCP) in their catchment area. Analyses of the responses found that the MCP level correlates with service diversification. Researcher **Phillip Beatty, MA**, found that a higher percentage of rehabilitation organizations in the moderate (54%) and high (60%) levels of MCP added

new settings or engaged in joint ventures compared to the low (37%) level (see Graph 1). Similarly, 57 percent of rehabilitation organizations in the high MCP level and 52 percent in the moderate MCP level pursued new markets compared to 33 percent in the low MCP level (see Graph 2). To diversify, rehabilitation organizations added subacute settings, outpatient satellites, and physical therapy offices in health clubs. Rehabilitation organizations in areas with moderate to high MCP also reported expanding their case mix and pursuing the markets of primary care, comprehensive day treatment programs, and sports

Re-engineering, by Managed Care Penetration

"Did you re-engineer, reduce your staff, or institute early retirement plans during the 1995 or 1996 calendar years?"

% who instituted re-engineering strategies ($p < .05$)

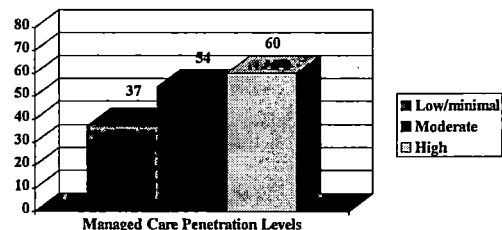


Graph 1

Add New Settings / Engage in Joint Ventures, by Managed Care Penetration

"Did you add any new settings of care or engage in any joint ventures that are owned or managed by your organization during 1995 or 1996?"

% who added new settings... ($p < .05$)



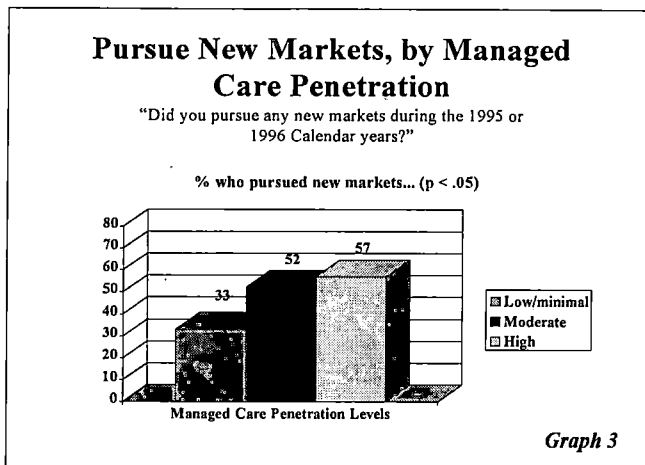
Graph 2

medicine.

Researchers also found that re-engineering occurred at higher percentages among programs in the moderate and high MCP levels (see Graph 3). Analyses found that for re-engineering, most activity occurred in the moderate MCP level. Rehabilitation organizations reported that they recently reduced and consolidated staff, installed information systems, and instituted higher productivity stan-

(Continued on page 4)

(Continued from page 3)



dards. Increased attention to patient outcomes also was reported.

Respondents expressed concern that managed care focuses too much on the bottom line. In addition, they said that managed care reduces the number of patients receiving comprehensive care and causes denials of care. Nevertheless, respondents indicated that managed care provides the positive impacts of increased efficiency, a focus on outcomes, and increased consumer knowledge. ❖

NRH Research Center Examines Employment Barriers for People with Psychiatric Disabilities

The NRH Research Center, together with the Laurie Mitchell Employment Center and several disability service and consumer organizations, is embarking on a three-year research study funded by the National Institute on Disability and Rehabilitation Research (NIDRR) to identify policy barriers to employment for individuals with psychiatric disabilities. The study will examine how aspects of the nation's health and income assistance programs for individuals with disabilities affect their employment status. In light of recent increases in the number of Supplemental Security Income (SSI) awards to younger working age individuals with psychiatric disabilities, the study will attempt to identify federal policies and implementation strategies that promote employment among this population.

During the study's first year, in-depth interviews will be conducted with 30 people with psychiatric disabilities.

One half of the candidates will be at work; the other half will be unemployed. Examination of the two groups will enable lead researchers, **Bonnie O'Day, PhD**, and **Jessica Scheer, PhD**, to identify both barriers to work and strategies people use to overcome policy barriers. During the second year of the study, researchers will test the findings from the interviews by surveying 360 people in Virginia. Work during the final year of the study will focus on ten individuals whose case profiles will provide a human dimension to the Center's policy recommendations.

The study is supported by an advisory group of stakeholders, most of whom have psychiatric disabilities, and others who represent families and service providers with direct experience with this population. The results of the study will be given to policy makers, consumers and others who advocate for policy changes that promote employment for people with psychiatric disabilities. ❖

States Selected for Study on Medicaid-Managed Care Programs

Five states with Medicaid-managed care programs that provide services to people with disabilities have been identified for study by the Research & Training Center on Managed Health Care and Disability. The study will take a qualitative approach in examining the programs' effects on quality and access of services for the adult SSI population. Site visits to each state for interviews with program stakeholders and consumer focus group discussions will follow extensive data collection and review efforts. Findings will be disseminated to each participating state so that they can learn from their own and others' achievements and challenges.

The states selected for the project are **Delaware, Massachusetts, New Mexico, New York, and Texas**. New York will be examined from both rural and urban perspectives. NRH Research Center staff will collaborate with the Montana-based Research and Training Center on Rural Rehabilitation and Independent Living to examine New York and New Mexico. Both state plans also will be studied as emerging programs, given their relative youth as capitated managed care plans.

The project team's first site visit will be to Houston, TX, where nearly 60,000 SSI recipients are enrolled in the Star Plus program. Star Plus recipients receive both acute and long-term care under an integrated, capitated delivery system. Because it is believed to be the largest such plan

(Continued on page 5)

(Continued from page 4)
 in the country, the Star Plus program is being watched so that others can learn from its experiences. ❖

NRH-RC and ILRU Invite Browsers to Web Site

The NRH Research Center (NRH-RC) and Independent Living Research Utilization (ILRU) Program have established a web site on the Internet to address disability and managed care issues. Information contained on the site includes a description of the *Research & Training Center on Managed Care and Disability*, a list of managed care resources for people with disabilities, links to managed care and disability resources, and a bibliography on managed care and disability. The address of the web site is <http://>

Managing Post-Polio: A Guide to Living Well with Post-Polio Syndrome

edited by Lauro S. Halstead, M.D.

An all new guide to living with post-polio syndrome is available from NRH Press, edited by **Lauro S. Halstead, M.D.**, internationally renowned post-polio expert and polio survivor. *Managing Post-Polio* provides polio survivors, family members, support group members, and health care professionals with a long-needed guide to assist individuals who have post-polio syndrome to live healthier, fuller lives.

This easy-to-read, consumer-oriented guide is designed to help with day-to-day living with this often misdiagnosed and debilitating condition. *Managing Post-Polio* deals directly and creatively with issues that confront polio survivors, and provides assistance and support for the ongoing management of their problems.

To order your copy of *Managing Post-Polio*, please fill out the order form on this page and forward with payment to NRH Press.

For more detailed book information, visit the NRH website at: http://www.nrh.mhg.edu/NRH_Press.htm.

Readers will also want to check out Halstead's article on post-polio syndrome in the April 1998 issue of *Scientific American*. ❖

Order Form *Managing Post-Polio*

For customer service inquiries or to place an order, call, write or FAX:

NRH Press
 National Rehabilitation Hospital
 Publication Office
 102 Irving Street, N.W.
 Washington, DC 20010-2949
 202.877.1778 ■ 202.829.5180 (FAX)

Name _____

Organization _____

Address _____

City _____ State _____ Zip _____

Country _____

Daytime Telephone (____) _____

Quantity	Title	Price
___	1-5 copies of <i>Managing Post-Polio</i>	\$11.95=\$ _____
___	6+ copies of <i>Managing Post-Polio</i>	\$ 8.95=\$ _____
___	Hardcover - <i>Managing Post-Polio</i>	\$25.00=\$ _____
	*Shipping =	\$ _____
(All amounts are in US \$) TOTAL AMOUNT =		\$ _____

Payment enclosed _____

Please bill my:
 MasterCard ___ Visa ___ American Express ___

Card number: _____

Expiration date: _____

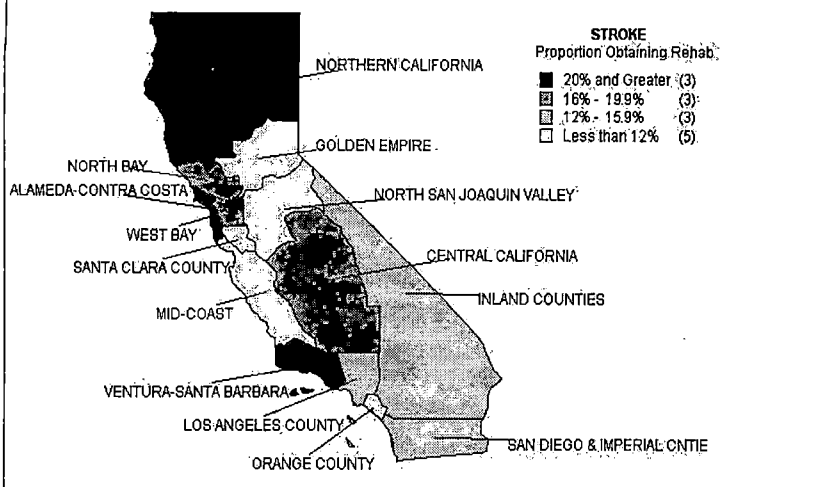
Signature: _____

*Shipping: U.S. orders only, add \$3.75 for one book, \$6.50 for two or more. International orders, call NRH Press for shipping cost.

Rates of Post-Stroke Rehabilitation Vary Dramatically in California

According to a recent study conducted by the Research & Training Center on Medical Rehabilitation Services and Health Policy and the University of California-San Francisco Research and Training Center on Disability Statistics, the state of California experiences large differences in the proportion of people with stroke who obtain their rehabilitation in an acute rehabilitation hospital/unit. Using hospital discharge data from the California Office of Statewide Health

Proportion of Persons with a Stroke Obtaining Rehabilitation by HSA



Planning and Development, project researchers looked at Health Services Areas (HSA) to determine what proportion of patients obtain post-stroke rehabilitation in acute rehabilitation hospital/units. They found that the percentage of patients discharged from an acute care hospital and admitted to an acute care rehabilitation setting ranged from 8 to 25 percent, depending on the HSA. The Northern California HSA, which has the lowest HMO penetration rate, also was found to have among the highest rates of admission to acute rehabilitation for post-stroke care.

Data used in this study did not enable the project team to identify individuals who received post-acute care in subacute or skilled nursing facilities. Principal Investigator

Gerben DeJong, PhD, believes that differences in the proportion of people with stroke obtaining rehabilitation in an acute rehabilitation facility in California may be attributable to managed care. "In order to reduce expenditures for post-acute rehabilitation, managed care plans are providing more services in lower cost settings, such as in subacute facilities or in outpatient or home settings," he says. "Data were not available to determine how many people were discharged to either a subacute or outpatient facility for post-stroke rehabilitation. It is possible that the lower rates of rehabilitation observed in certain areas of California could reflect greater utilization of subacute or outpatient services."

The UCSF and NRH-RC project staff, which also includes **Jeremy Pickreign, MS**, **Linda Remy, PhD**, and **Mitch La Plante, PhD**, are continuing to share their research findings on the need for, and access to, rehabilitation. ❖

NRH Research Center's Student Fellow Graduates

Kathleen Luta, the NRH-RC's first student fellow, graduated in May with a Master's Degree in Public Policy (MPP) from the Georgetown University Public Policy Institute. In addition to her MPP, she received a Certification in Health Services Research and Policy.

The NRH-RC initiated this fellowship in 1996, with funding from the Department of Education's National Institute on Disability and Rehabilitation Research. The purpose of the fellowship is to train scholars with disabilities to conduct research and policy analysis on health and disability issues.

In addition to two years of coursework, fellows are required to complete an internship at the NRH-RC, where they conduct research on a particular aspect of health policy. Kathleen's research project is entitled, "The Impact of Personal Assistance Services on the Utilization of Primary Care, Short-Term Hospital-based Care, and Employment Status." She found a significant, positive correlation between people who receive paid personal assistance and primary care utilization and short-term hospital-based care as compared with those who receive no paid assistance. She also found that employment was positively correlated with receipt of paid personal assistance, as compared with receipt of informal assistance only.

Kathleen came to the NRH-RC fellowship with a

(Continued on page 7)

(Continued from page 6)

Master's Degree in Counseling Psychology from Temple University and over seven years experience as a mental health counselor at a community mental health clinic. "Georgetown was both academically and personally stimulating," she states. "The quantitative courses were very challenging; however I learned a great deal and enjoy using my quantitative skills. I also had to learn to advocate for myself to get my access needs met. Once I made my needs known, most professors were very accommodating." Kathleen feels that she gave value back to Georgetown by bringing a worthwhile disability perspective to some of her courses. Upon graduation, Kathleen would like to continue working in an organization that focuses on health issues that affect persons with disabilities. ❖

Independent Living Research Utilization Program and NRH Research Center Host Managed Care Conference

On March 1-2, 1998, the Independent Living Research Utilization (ILRU) Program and the NRH Research Center (NRH-RC) co-hosted a working conference to examine health care issues for people with disabilities. Entitled "Empowerment in Managed Health Care: People with Disabilities in a Changing Health Care Environment," the conference explored the components of the managed care approach to health care from the perspective of people with disabilities and sought to develop recommendations for action to ensure that the health care needs of people with disabilities are met appropriately. The conference was held in Houston, TX, as part of the Research & Training Center on Managed Care and Disability.

Approximately 80 conferees participated in the conference, representing leaders of disability communities across the country. **Marca Bristo**, chair of the National Council on Disability, gave the conference's keynote address and highlighted the stake that consumers have in managed care. A panel comprised of **Robyn Stone, Bob Kafka, June Kailes, Gina McDonald, Bobby Silverstein, and Peter Thomas** responded with observations about ways in which managed care needs to be made more responsive to the particular health care needs of individuals with disabilities. As co-directors of the RTC, **Lex Frieden** and **Gerben DeJong** co-chaired the conference and were ably assisted by **Pamela Dautel** of the ILRU staff.

Conferees addressed five health care topics: govern-

ing principles for managed health care from a disability perspective; consumer rights, protections, and responsibilities; consumer health-plan decision making and health-plan accountability; Medicare and Medicaid managed care; and making managed care work for people with disabilities. Participants were split into workshops with each group assigned a facilitator and recorder to provide leadership and accurate documentation of the groups' discussions. Specific questions were developed for each workshop to guide the group's process and stimulate discussions on key issues.

Participants reported that the conference exceeded their expectations. It provided an opportunity to establish the basis for an ongoing dialogue with key consumer groups who have a stake in the work of the RTC on Managed Care and Disability. The RTC is seeking funding for future conferences that will expand the dialogue to other stakeholder groups, including managed care organizations, in order to acquaint them with the specific health care needs and concerns of individuals with disabilities. ❖

Study on Laws Impacting People with Disabilities Begins

The Independent Living Research Utilization (ILRU) Program and the **Health Law and Policy Institute at the University of Houston** are collaborating on a project to access legal problems and adverse events experienced by people with disabilities in managed care arrangements. The project team is assembling current relevant litigation to ascertain the consequences of non-discrimination laws on health care and people with disabilities. The project's goal is to provide insights into changes needed to strengthen laws and regulations governing managed care for people with disabilities. ILRU is the NRH Research Center's partner in the Research & Training Center on Managed Care and Disability. ❖

Managed Care and Non-managed Care Health Plans Enroll Different Types of Individuals with Disabilities

Researchers at the Research & Training Center on Managed Care and Disability have identified characteristics of individuals with disabilities enrolled in managed and non-managed care health plans. In an analysis of two national representative data bases, researchers

(Continued on page 8)

(Continued from page 7)

found that age, self-reported health status, and geographic location are related to whether an individual is enrolled in a managed care or non-managed care plan. The findings speak to a long-standing issue of whether managed care plans are more prone to enroll lower risk populations.

In the NIDRR-funded project, two groups of people with disabilities are being studied: working age adults with private health plan coverage and individuals covered by Medicare. Data comes from the 1994 National Health Interview Survey and the 1994 Medicare Current Beneficiary Survey.

"We are not surprised by the initial results from the analysis of the working age adults," says Project Researcher **Phillip Beatty, MA**. "People with disabilities covered by managed care, just like people without disabilities, tend to be younger, more educated, and in better health than people covered by a non-managed care arrangement. Furthermore, people with disabilities covered by managed care, as opposed to indemnity coverage, are more likely to be employed, much more likely to live in the western US, and more likely to report similar levels of functional limitations."

Other characteristics impact people with disabilities with Medicare coverage differently than privately insured, working age disabled. According to Project Researcher **Jeremy Pickreign, MS**, age does not influence enrollment in Medicare managed care and traditional Medicare for the elderly disabled (65 years and older), but, with non-elderly people with disabilities with Medicare, age plays a defining role (i.e., Medicare managed care disabled tend to be older). The level of education does not affect the type of health arrangement a Medicare enrollee uses. While the elderly under 75 years in Medicare managed care tend to be in better health, the non-elderly and very elderly report no difference between Medicare managed care and traditional Medicare. "But," says Pickreign, "like those with private health plans, Medicare beneficiaries with disabilities covered by managed care are more likely to live in the western US, less likely to be eligible for Medicaid, and more likely to report similar levels of functioning."

The project continues to analyze the effects of health plan coverage characteristics and health plan participation on health care utilization patterns of people with disabilities. ❖

Managed Care May Also Influence Post-Acute Placement for Medicare Patients Not Enrolled in a Managed Care Plan

Managed care appears to affect patterns of post-acute placement for Medicare patients with stroke and hip fracture who are *not* enrolled in a managed care or Medicare risk plan, according to a study conducted by the Research & Training Center on Medical Rehabilitation Services and Health Policy. Using data collected by **Andrew Kramer, MD**, at the Center for Health Sciences Research at the University of Colorado Health Sciences Center, researchers examined the factors that determine whether patients discharged from an acute care facility with a diagnosis of stroke or hip fracture received rehabilitation in an acute rehabilitation hospital/unit or within a skilled nursing facility.

Researchers found that the likelihood of being admitted to a skilled nursing facility following discharge from an acute care hospital with a diagnosis of stroke or hip fracture increased with greater levels of managed care penetration in a given market area. For some time now, experts have speculated that managed care plans tend to admit their enrollees to lower cost settings, such as skilled nursing facilities, outpatient care, or home care, in order to reduce the costs associated with post-acute care. Unlike other studies conducted on this issue, however, none of the participants included in the study were enrolled in a managed care plan; rather, all were receiving Medicare benefits through the fee-for-service program. The study's findings suggest that a managed care "spillover effect" may exist. In other words, as managed care reaches a critical mass, the cost-conscious patterns of care may become the standard of practice within a community.

NRH-RC staff members contributing to this study included **Janet Sutton, PhD**, **Jeremy Pickreign, MS**, and **Rachel Halpern, MA**. NRH-RC staff have been working with researchers at the University of Colorado Health Sciences Center to determine whether rehabilitation outcomes also are affected by levels of managed care penetration. ❖

Age, Family Support, and Ethnicity Play Role in Post-Acute Placement for Stroke

Data from a recent stroke placement and outcomes study underscores the importance of age, family support
(Continued on page 13)

Assistive Technology Research Center

VREye Sheds New Light on Perceptual Disabilities

One of the most unique investigative tools found in the ATRC laboratory is the "VREye," a V6 Head-Mounted Display (HMD) that provides "immersion" into a visual virtual environment. Unlike other virtual reality devices, the VREye has a sensor for monitoring the direction of the wearer's right eye gaze, allowing the visual fixation behavior of an experimental subject to be captured as s/he responds to stimuli presented through the HMD. While two other virtual reality subsystems are commercially available—the V6 HMD from Virtual Research Systems in California and the Eye-Tracker from ISCAN in Massachusetts—neither has the capability of the combined unit.

The VREye invites significant studies of disabilities of "attending," such as left-neglect that can be a consequence of stroke or perceptual disabilities that are experienced by many individuals with autism. Substantial experimental literature exists on both of these topics, but VREye opens a whole new realm of opportunity because it allows objective monitoring of visual fields seen by study participants. These fields can be static or animated, 2- or 3-dimensional, computer-generated or real photographic images, and "true" virtual environments that remain fixed relative to the physical world as the HMD-wearer looks about.

Early data using VREye with an individual confirmed left neglect has been displayed in two forms: bright spots indicating locations where gaze dwells superimposed on the image the subject is viewing and plots of gaze vertical and horizontal position versus time. As expected, when viewing an image of a face, the subject's gaze is limited exclusively to the right side of that face. What was not expected, at

least in this preliminary data, was that there appears to be a correlation between vertical and horizontal eye movements. In other words, eye movements are often diagonal, in contrast to data from a typical subject who tends to make clearly vertical and clearly horizontal eye movements. Verification of this pattern and interpretation remains to be undertaken, but even this small sample is indicative of the experimental power that resides in this equipment. ❖

NIDRR Grant Opportunity to Explore Telerehabilitation

An exciting new proposal to the National Institute on Disability and Rehabilitation Research (NIDRR) may result in a unique investigation of telerehabilitation opportunities. Several members of the ATRC staff and colleagues at **Catholic University of America (CUA)** and **Sister Kenny Institute (SKI)** in Minneapolis have responded to a request for proposal that, if granted, will award them the first Rehabilitation Engineering Research Center (RERC) grant in the new area of telerehabilitation.

The CUA/NRH/SKI proposal incorporates 10 research and development activities and five national resources meant to serve as information, training, and technical assistance hubs for colleagues in other locations who are embarking on clinical or experimental ventures in the application of telemedicine methods to deliver rehabilitation services. The proposed Center will develop a strong rural focus through its sites in Minnesota and via collaborations with individuals and institutions in North

(Continued on page 10)

(Continued from page 9)

Carolina, Montana, and the Eastern Shore of Maryland. Projects will concentrate on both electronic ties to remote clinics and direct ties to the homes of individuals with disabilities.

The request for proposal cites tightening of reimbursement, reduction of lengths of stay in comprehensive rehabilitation hospitals, and scarcity of rehabilitation expertise in rural areas as the primary motivations for funding development in this field. If granted, ATRC Director **Mike Rosen, PhD**, and **Jack Winters, PhD**, CUA's director of the Biomedical Engineering Department and principal investigator on a current subcontract from the ATRC, will serve as co-principal investigators. ❖

Cognition and Performance Enhancement Studies Continue

ATRAC's Cognition and Performance Enhancement Section continues to move forward with its studies. Here is an update of activities:

- A study of the efficacy of the ginkgo biloba for improving cognitive and physical recovery following stroke is anticipated to begin on October 1, 1998. The project team is awaiting approval of an investigational new drug application to the FDA submitted recently by Germany's Schwabe Company. Another ginkgo biloba study, headed by **Dennis Fitzgerald, MD**, also will begin in October. Dr. Fitzgerald will be looking at the effects of a ginkgo preparation on tinnitus (ringing in the ears). ATRC will add an arm to that study to examine the cognitive effects of the intervention.
- Researchers are testing subjects for a study of the cognitive effects of phytoestrogen in perimenopausal women. The phytoestrogen and cognition study is a "piggyback" onto an ongoing study on the effects of phytoestrogen on blood lipids headed by **Barbara Howard, PhD**, and **Samer Elahham, MD**.
- ATRC's study to develop sensitive, computerized assessments for cerebral concussion is nearly

complete. The project team has collected data on approximately 150 high school and college students. Researchers will analyze data in September and have a final version of the software available to distribute to high school and collegiate athletic teams by January 1, 1999. ❖

RESNA Conference Busy for ATRC Staff

ATRAC was well-represented at the annual Rehabilitation Engineering and Assistive Technology Society of North America (RESNA) conference held in Minneapolis from June 25 through the 30. Tom Dang, MSE, Mike Rosen, PhD, Dave Brennan, BBE, John Noiseux, MS, and consultant Cheryl Trepagnier, PhD, manned an exhibit booth, made three poster presentations, sponsored one full-day course, and attended countless meetings of committees, boards and special interest groups during the week-long conference.

The ATRC booth was the scene of nearly non-stop flow of interested conference attendees. In addition to a backdrop of pictures and text summarizing ATRC's plans and accomplishments, the booth

(Continued on page 11)



(Continued from page 10)

provided opportunities to experience two interactive activities. The Interactive Video Exercise System (IVES) offered attendees a look at a modified video game that provides motivation for therapeutic exercise for children with disabilities. A working mock up of ATRC's Wired Independence Square project allowed participants to pass through a light beam starting line, retrieve NRH literature from a cabinet and a drawer, and then pass back out through the light beam. Afterwards, they viewed a laptop computer screen that displayed the timing of their actions superimposed on a photograph of the task environment where they had been working.

Two of the poster presentations described outcomes of ATRC projects: load measurements sustained by long leg braces during gait and IVES. Another presentation at the conference was made by one of Mike Rosen's former students at the University of Tennessee about *Boing!*, a children's home exercise arcade that has now become an ATRC project. *Boing!* was one of the five winners in the PVA-sponsored Student Design Competition.

Rosen presented an all-day, hands-on course on product design for people with disabilities. It attracted two dozen participants—twice last year's attendance—who devoted their day to learning and practicing group design methods and vital rules of human factors engineering. During the afternoon, the class divided into three teams, each of which designed and built a mock up of a camera system meant to permit a particular individual to enjoy taking pictures despite a disability. Class members included therapists, rehabilitation engineers, equipment vendors, other professionals, and some users. The opportunities to experience well-defined phases of the design process, interact in multi-disciplinary groups, exercise creativity tempered by practicality, and actually build models using tools and materials made this course unique and inspiring. ❖

Experimental Equipment Keeps Researchers Active

Three innovative pieces of experimental equipment are capturing the attention of ATRC researchers. None of the equipment is new, yet each is now being analyzed, expanded, and taken to new levels of development.

The prototype *Boing! exercise arcade* is a state-of-the-art universal gym for home use by children. It is an arched-shaped structure that holds a bungee cord that supports either a child's swing for bouncing aerobic exercises or a guide block for resistance exercises. The arches are supported at the bottom by a circular base. At the top, a bracket holds the two arches together and supports a sensor that is based on the mechanism of a computer mouse. The sensor reads the amount of stretch in the bungee cord hanging vertically from inside the sensor housing. The aperture through which the bungee passes in the guide block is lined with rollers so that friction does not interfere with accurate sensing of bungee stretch. A video monitor is mounted on one of the arches so that computer-generated images can be viewed by the child. Recently displayed at the RESNA conference, the *Boing!* apparatus is now being improved and prepared for more extensive evaluation. New "gamercize" software is being written. ATRC researchers plan to build at least one more unit and collect data from use by children with disabilities and their peers.

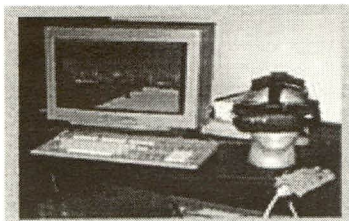
Work continues on the *Magic Walker*, a pediatric "walking frame" designed by students in a product design course taught by **Mike Rosen, PhD**. Currently being evaluated in home and laboratory settings, the walker features a relatively inconspicuous frame design and steerable front wheels that can be controlled via gross motions of the child's torso. Three *Magic Walkers* are being tested by children in Memphis, TN, and a new, improved unit has just been completed for evaluation at NRH. A nearby-Maryland child has been identified as a strong candidate for testing the improved *Magic Walker*.

(Continued on page 12)

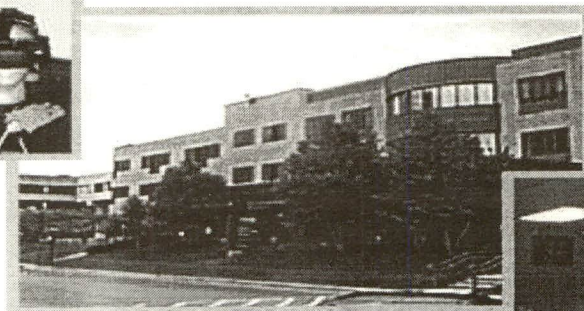
(Continued from page 11)

One target for continued engineering development on the *Magic Walker* is a brake system that responds automatically to conditions that imply potential danger. Since the Walker was originally designed for children whose dexterity is not sufficient to allow them to make use of standard bicycle-style brake levers and because it was intended for indoor use, no brakes were included in the initial design. Indications are, however, that some users will not be willing to forgo using the walker for outdoor activities. In fact, one child recently ran in her school's field day events using her *Magic Walker*. The challenge now is to develop suitably rugged, inexpensive, zero-maintenance brakes that will engage automatically to slow the *Magic Walker* to a stop (or limit it to safe speeds) when excessive speed or acceleration or fore-aft tilt (i.e., a driveway) are detected. ❖

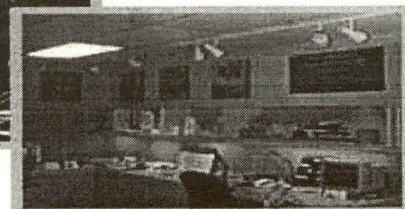
Visit our Web Site
Assistive Technology Research Center
<http://www.nrhartc.org>



Virtual Reality



National Rehabilitation Hospital



Technology Demonstration Center

In 1993 the United States Congress authorized the National Rehabilitation Hospital Research Center to establish the Assistive Technology Research Center (ATRC).

The ATRC mission is to explore ways that technology, especially technology developed for military and space purposes, can be used to improve the lives of Americans with disabilities.

This mission is supported by the ATRC's location in the National Rehabilitation Hospital. Constant interaction with clinicians and persons with disabilities, as study participants and as consumers of rehabilitation services, keeps ATRC researchers focused on the challenges and needs experienced by persons with disabilities.

(Continued from page 8)

port, and ethnicity in determining post-acute placement. The study, which is a component of the Research & Training Center on Medical Rehabilitation Services and Health Policy, was conducted by the NRH Research Center in Washington, D.C., Kessler Institute for Rehabilitation in northern New Jersey, and the Allina Health Care System in the Minneapolis/St. Paul area. The study was designed to help understand what factors determine the setting in which stroke patients receive rehabilitation and what rehabilitation settings, or other post-acute factors, are associated with the outcomes of stroke patients at six months post-discharge.

To collect data, the study team recruited newly-impaired stroke patients in acute care hospitals in each of the geographic areas. Nurse interviewers collected data on stroke severity and sociodemographics through face-to-face interviews with study participants and by abstraction of information from their medical records. Participants then were interviewed by telephone at one, three, and six months following acute-care discharge to determine their sequence of rehabilitative care and "long-term" community integration and functional outcomes.

"Due to our intensive work in the data collection phase of this project, we are now well positioned to examine the effect of different rehabilitation settings on the longer-range outcomes of stroke survivors," states Project Director **Phillip Beatty, MA**. Over the next couple of months, the stroke research team will make a strong contribution to literature regarding the effectiveness of various rehabilitation settings.

Initial data analyses to determine the factors associated with post-acute placement suggest that increasing age and lack of family support in the community are associated with nursing home placement. African Americans are less likely to be discharged to inpatient rehabilitation programs and more likely to be discharged home following acute care. Decreased comprehension abilities are associated with nursing home placement, while decreased physical function is associated with placement in inpatient rehabilitation programs.

Future publications will examine these findings in greater detail, focusing on the functional and community integration outcomes associated with receipt of treatment in hospital, subacute and home settings. The stroke research team aims to shed more light on the long-term outcomes associated with different treatment settings in an effort to broaden the knowledge base that payers have to work with when they make decisions about where their patients receive rehabilitation following a stroke.

In addition to Beatty at the NRH Research Center, the lead investigators at the two collaborating centers include **Mark Johnston, PhD** at Kessler and **Kent Canine, PhD** at the Allina System. ❖

Eckenhoff Receives Honorary Doctorate

Edward A. Eckenhoff, president and CEO of the National Rehabilitation Hospital, received an honorary doctorate on May 23, 1998 from Transylvania University in Lexington, Kentucky. The doctor of humane letters degree was bestowed on Eckenhoff, a 1966 graduate of the university, for his contributions to the field of medical rehabilitation, especially for creating a national model of excellence for rehabilitation facilities.

In addition to receiving an honorary doctorate, Eckenhoff delivered the commencement address to Transylvania University graduates. One month later, on June 22, he traveled to Huntington Station, New York, to serve as commencement speaker to graduates of Touro College's School of Health Sciences. ❖

Rehab 2000 Conference Proceedings Available

The proceedings from the NRH Research Center's national conference, *Rehab 2000: Expanding Risks, Responsibilities, and Rewards*, are now available. *Rehab 2000*, held on September 25 and 26, 1997, provided a forum for the NRH Research Center to (1) synthesize and present the research findings from its 3-year Research and Training Center on Medical Rehabilitation Services and Health Policy and (2) examine the delivery, legislative, and research trends that are likely to shape medical rehabilitation in the next decade. The conference was co-sponsored by the National Institute on Disability and Rehabilitation Research (NIDRR) and the Sister Kenny Institute in Minneapolis, MN.

Rehab 2000 comprised three tracks: (1) Industry Consolidation: Mergers and Acquisitions; (2) Payment Reform, Outcomes, and Informed Consumer Choice; and (3) Industry Diversification and Innovation. Each track had four break-out sessions

The proceedings book contains summaries of the keynote speech, delivered by **Robyn I. Stone, DrPH**, and each of the break-out sessions. "Integrating the presentations of 37 speakers was quite a challenge," says project

(Continued on page 14)

(Continued from page 13)

director, **Rachel Halpern, MPH**, "but I think we've written a very readable and accurate document." The proceedings were prepared and edited by **Halpern, Gerben DeJong, Jonathan Young, Phillip Beatty, Bonnie O'Day, and Janet Sutton**.

The proceedings may be purchased for \$25.00 plus shipping cost. *Rehab 2000* attendees will receive a copy of the proceedings as part of their conference registration fee. For more information, contact **Georgette Smith** at NRH-RC, (202) 466-1900. ❖

NRH Research Center Receives 1998 Award for Outstanding Oral History

The NRH Research Center has been awarded the Oral History Association's 1998 Award for Outstanding Oral History.

The honor recognizes *Equality of Opportunity: The Making of the Americans with Disabilities Act*, a project funded by the National Council on Disability (NCD). Authored by **Jonathan Young**, the 300-page text chronicles the development—both social and political—and eventual passage of the landmark 1990 legislation.

More than 50 interviews were conducted for the historical account, which was "planned and executed according to the highest professional standards and documents a subject of considerable intellectual and social significance," according to the award selection committee. The panel also noted with favor the archival collection of print materials developed in conjunction with the project.

Copies of *Equality of Opportunity* are available through the NCD at 202-272-2004. ❖

Meet Jeremy Pickreign.....

In recent years, singing has been Jeremy Pickreign's ticket to worldwide and domestic travel. In college, he sang with a chorale group that toured England and Wales and the former Soviet Union and Czechoslovakia. "We sang in Prague, one of the world's most beautiful cities, just one week before the nation's first democratic elections," says Jeremy. "The excitement in the air was incredible."

Since graduation, Jeremy has made his home in Washington, DC, where he sings tenor with the National Cathedral Chorale Society. "Singing is just pure pleasure," he says. "And being able to sing in such a grand place as the Washington National Cathedral on a regular basis is nothing short of amazing."

As the NRH Research Center's statistician and, as he likes to point out at every opportunity, its youngest full-time employee, Jeremy hails from Brewerton, New York, a small hamlet north of Syracuse. He refers to Brewerton fondly as the "last refuge of suburbia," where snowfall averages 114 inches and winter often begins at Labor Day.

(Continued on page 15)

Order Form

Rehab 2000 Conference Proceedings (\$25.00 per book)

For customer service inquiries or to place an order, call, write or FAX:

NRH Research Center
102 Irving Street, N.W.
Washington, DC 20010-2949
202.466.1900 ■ 202.466.1911 (FAX)

Quantity		Price		
_____	X	\$25.00	= \$	_____

*Shipping & Handling	=	_____		3.50
(U.S. and Canadian orders)				

TOTAL AMOUNT	= \$	_____
(U.S. dollars only)		

Make check payable to **NRH Research Center**.

Payment enclosed _____

Name _____

Organization _____

Address _____

City _____ State _____ Zip _____

Country _____

Daytime Telephone (____) _____

Who is Jeremy Pickreign?

Hometown: Brewerton, NY

Family: Parents, grandmother, and sister (with husband and two sons) live in Brewerton; brother (with wife and two daughters) lives outside Providence, RI; cat (named Bonnie)

Diversions: Singing; reading (primarily science fiction and fantasy); seeing movies; running a fantasy baseball league; shooting darts; playing computer games

Desires: Travel to Europe again (maybe even live there for a time); get a PhD; write a book

Favorite Books: *The Dragon Prince*, *Melanie Rawns*; *On a Pale Horse*, Piers Anthony; *Belgarath the Sorcerer*, David Eddings; *Bible Stories for Adults*, James Morrow; *The Secret Books of Paradys*, Tanith Lee.

Favorite Music: Almost anything. Almost.

(Continued from page 14)

Jeremy earned a Bachelor of Science degree in mathematics at State University of New York (SUNY) at Albany and, in 1995, a Master of Science in biometry and statistics from the university's School of Public Health. From there, he moved to the nation's capital, where he put his statistics skills to work for the Center for Studying Health System Change. After two years, he joined the staff at NRH-RC, working on all projects that require statistical research and analysis. He develops surveys and sample groups and then analyzes the statistical information gathered during research.

"I am involved in some fashion with most of the Research Center's activities," he says. "Contrary to most people, I love statistics. My work here leads me to some pretty fascinating assignments."

Jeremy continues to pursue his love for statistics. This fall, he will begin work toward a PhD. He will take classes at George Washington University while continuing to work full-time at the Research Center. "It's going to be a long five years, but worth the hard work," he says. "This way I can continue my work here while getting the degree I want and need for my career." ❖

Publications (July 1997 - June 1998)

Beatty P, Richmond GW, Tepper S, DeJong G
1998 "Personal Assistance for People with Physical Disabilities: Consumer Direction and Satisfaction with services." *Archives of Physical Medicine*

& Rehabilitation, Vol. 79, June.

Bleiberg J, Garmoe W, Halpern E, Reeves D, Nadler J
1997 "Consistency of Within-Day and Across-Day Performance After Mild Brain Injury." *Neuropsychiatry, Neuropsychology, and Behavioral Neurology*, 10(4), 247-253.

Bleiberg J, Halpern E, Reeves D, Daniel JC
1998 "Future Directions of Neuropsychological Assessment of Sports Concussion." *Journal of Head Trauma Rehabilitation*, 1998; 13(2): 36-44.

Bockenek W, Beatty L, DeJong G, Lanig IS, Mann N
1998 "Primary Care for People with Disabilities." *Rehabilitation Medicine: Principles & Practice*, 3rd edition, Joel DeLisa, Bruce Gans, et al., eds. Philadelphia, PA: Lippincott-Raven Publishers.

DeJong G
1998 "Emerging Post-ADA Research Issues Related to the Employment of People with Disabilities." *Mainstream*, (Spring), 12-14.

DeJong G
1997 "Primary Care for People with Disabilities: An Overview of the Problem and Opportunities." *American Journal of Physical Medicine and Rehabilitation*, 76(May/June) No.3 (Suppl.) 1-7.

DeJong G
1997 "Value Perspectives in Medical Rehabilitation Outcomes Research and the Challenge of Managed Care." A chapter in *Medical Rehabilitation Outcomes Research*, Marcus J Fuhrer, ed. Balti-

(Continued on page 16)

(Continued from page 15)

more: Paul H Brookes Publishing, Co., 43-60.

DeJong G and O'Day B

1997 "Cross-cutting Issues in Disability Policy and Services and Their Implications for Disability Research. A paper prepared for the National Institute on Disability and Rehabilitation Research (NIDRR) pursuant to the development of the agency's long-range plan.

DeJong G and Brannon RW

1998 "Trends in Services Directed to Working-age People with Disabilities." *Living in the Community: A Cross-group Perspective*, Vincent Mor and Susan Allen, eds. Springer, 168-194.

DeJong G and Sutton JP

1997 "FRGs: An Idea Whose Time is Past or an Idea Whose Time is Still to Come." *Outlook*. 2(Summer), No. 2, 6-7, 9.

DeJong G and Sutton JP

1998 "Managed Care and Catastrophic Injury: The Case of Spinal Cord Injury." *Topics in Spinal Cord Injury Rehabilitation*, 3(Spring) No. 4, 1-16.

DeJong G and Sutton JP

1997 "Rapid Growth of Post-acute Care Services Leads Policy Makers to Reconsider Bundling Medicare Post-acute services." *Outlook*, 2(Summer), No.2, 8-9.

Early E, Battle K, Cantwell E, English, J, Lavin JE, Larsen EL

1998 "Effect of Several Interventions on the Frequency of Hand Washing Among Elementary Public School Children." *American Journal of Infection Control*, 263-269.

Gawne AC, Halstead LS

1997 "Post-Polio Syndrome: Historical Perspective, Epidemiology and Clinical Presentation." *Neuro Rehab.*, 8:73-81.

Halstead LS

1998 "Acute Polio and Post-Polio Syndrome." In Halstead, LS (Ed.), *Managing Post-Polio: A Guide to Living Well with Post-Polio Syndrome*. Washington: NRH Press, 1-19.

Halstead, LS

1998 "New Health Problems in Persons with Polio. In Halstead, LS (Ed.) *Managing Post-Polio: A Guide to Living Well with Post-Polio Syndrome*. Wash-

ington: NRH Press, 20-53.

Halstead, LS

1998 "Post-Polio Syndrome." *Scientific American*, April.

Halstead, LS, ed.

1998 *Managing Post-Polio: A Guide to Living Well With Post-Polio Syndrome*. Washington: NRH Press, 1998.

Linebaugh C, Baron C, and Corcoran K

1998 "Assessing Treatment Efficacy in Acute Aphasia: Paradoxes, Presumptions, Problems and Principles." *Aphasiology*. (12): 519-536.

Rao P, Blosser J, and Huffman N

1997 "Measuring Consumer Satisfaction." In *Outcomes Measurement In Speech-Language Pathology*. Thieme Medical Publishers.

Rao P

1998 Book review, *Functional Assessment and Outcome Measures for the Rehabilitation Health Professional* by Dittmar & Gresham in *Topics in Language*, May.

Rao P

1997 "As the Expert," National Stroke Association, *Be Stroke Smart*. Vol. 4, (10). October.

Rao P

1998 "Quality of Life the Focus After Rehabilitation." *Be Stroke Smart*, Vol. 15 (3). March.

Richmond G W, Beatty P, Tepper S, DeJong G

1997 "The Effect of Consumer-directed Personal Assistance Services on the Productivity Outcomes of People with Disabilities. *Journal of Rehabilitation Outcome Measurement*. 1(August)No. 4, 28-51.

Schie JC, Miller SA

1997 "You Gotta Have Heart." *OT Week*, No. 35 (11), 16-17.

Sicard-Rosenbaum L, Danoff JV, Guthrie JA, Eckhaus MA

1998 "Effects of Energy-Matched Pulsed and Continuous Ultrasound on Tumor Growth in Mice." *Physical Therapy*, No. 3(78), 271-277.

Sutton JP, DeJong G, Song H, Wilkerson D

1997 "The Impact of a Function-based Payment Model on the Financial Performance of Acute Inpatient Medical Rehabilitation Providers: A Simulation

(Continued on page 17)

(Continued from page 16)

Analysis." *Archives of Physical Medicine and Rehabilitation*, 78(December) No. 12, 1290-1297.

Prince, Jane Mattson and Janet Haas

1997 "A Vision for the Future: Interview with Gerben DeJong, PhD." *Journal of Head Trauma Rehabilitation*, 12(February), No. 1, 71-86.

Tepper S, Sutton J, Beatty P, DeJong G

1997 "Alternative Definitions of Disability: Relationship to Health Care Expenditures." *Disability and Rehabilitation*, 19(12), 556-558.

Walls V, Jones M

1998 "Physical Therapy Management of the Post-Polio Patient Using the NRH Classification System." *American Physical Therapy Association, Neurology Report*, Vol. 22 (1), 22-26.

Welch R C, Bronfman E T

1997 "The Re-engineering of Respiratory Care." *Aspen's Advisory for Nurse Executives*, Vol. 12 (12).

Wheatley, Ben, Gerben DeJong, Janet P Sutton

1997 "Consolidation of the Medical Rehab Industry Gaining Steam." *Eli Rehab Report*, 4 (May), No. 5., 3829-3832.

Wheatley, Ben, Gerben DeJong, Janet P Sutton

1997 "Managed Care and the Transformation of the Medical Rehabilitation Industry." *Health Care Management Review*, 22(Summer) No. 3, 25- 39.

Wheatley, Ben, Gerben DeJong, Janet P Sutton

1998 "The Consolidation of the Inpatient Rehabilitation Industry." *Health Affairs*, 17(May/June), No. 3, 209-215.

Young, J

1997 Equality of Opportunity: The Making of the Americans with Disabilities Act. Washington, DC: National Council on Disability.

Presentations (July 1997 - June 1998)

Phillip Appel was an invited discussant for a symposium entitled "Exceptional Healing Through Hypnosis" at the 40th Annual Scientific Meeting of the American Society Clinical Hypnosis. Ft. Worth, TX. March 1998. Other presentations include:

- "Cross Generational Dialogue: The Use of Language in Pastoral Counseling and Understanding Individual Dif-

ferences," invited workshop presenter, the 1998 "Army Chief of Chaplains Unit Ministry Team Training." Dallas, TX. March 1998.

Philip Appel and Carol Bullard-Bates gave a poster presentation, "Performance Enhancement in Rehabilitation," at the American Congress of Rehabilitation Medicine. Boston, MA. September 1997.

Philip Appel and Sheryll Daniel presented "Creating and Utilizing Trance in Psychotherapy: Naturalistic and Phenomenological Approaches" at a half-day workshop for the 40th Annual Meeting of the American Society Clinical Hypnosis. Ft. Worth, TX. March 1998.

Chris Baron presented "Aging and Communication" to the George Washington University's Department of Geriatrics. Washington, DC. March 1998. Other presentations include:

- "Aging and Communication" the Washington Geriatric Educational Consortium. Washington, DC. April 1998.

Phillip Beatty presented "Research Findings on Industry Diversification and Innovation" at the *Rehab 2000: Expanding Risks, Responsibilities, and Rewards* conference. Arlington, VA. September 1997.

Eileen Bonfman and Rosemary Welch gave a poster presentation, "The Re-engineering of Respiratory Care," at the 74th annual meeting of the American Congress of Rehabilitation Medicine. Boston, MA. September 1997. Other presentations include:

- "The Complaint Management Piece of the Customer Service Puzzle," poster presentation, the annual meeting of the American Organization of Nurse Executives. San Diego, CA. March 1998.

Justin Carter, Melissa Richman, and Patty Fletcher gave a poster presentation, "Clinician Versus Technology: Is One a Better Educational Tool," at the annual meeting of the Maryland Speech-Language Hearing Association. March 1998.

Jane Coles and Patty Thorpe presented a paper, "Dysphagia Following Anterior Cervical Spine Surgery," at the annual meeting of the District of Columbia Speech-Language-Hearing Association. Washington, DC. February 1998.

Brendan Conroy, Chris Baron, and Carol Bullard-Bates presented "Making Sense of Stroke" to the Fairfax County Government healthcare professionals. Fairfax, VA. July 1998.

Gerben DeJong presented "Emerging Issues in Rural

(Continued on page 18)

(Continued from page 17)

Managed Care & Disability” to a national call-in conference sponsored by the Rural Institute on Disabilities, University of Montana. Missoula, Montana. August 1997. Other presentations include:

- “The Growth, Maturation, and Consolidation of the Medical Rehabilitation Industry and Their Implications for ACRM’s Research Mission,” the 74th annual meeting of the American Congress of Rehabilitation Medicine. Boston, MA. September 1997.
- “Trends in Industry Consolidation,” *Rehab 2000: Expanding Risks, Responsibilities, and Rewards* conference. Arlington, VA. September 1997.
- “Prospects for an Outcomes-driven System of Service Delivery & Financing in TBI and Stroke Rehabilitation,” the 18th Annual Conference on Traumatic Brain Injury and Stroke sponsored by the Braintree Hospital Rehabilitation Network. Cambridge, MA. October 1997.
- “Managed Care’s Impact on Medical Rehabilitation and People with Disabilities,” conference on “Ethics, Managed Care, and the Rehabilitation Patient” sponsored by the Rehabilitation Institute of Michigan of the Detroit Medical Center and Wayne State University. Dearborn, MI. November 1987.
- “Emerging Post-ADA Research Issues Related to the Employment of People with Disabilities,” panel presentation, conference on “Employment Post the Americans with Disabilities Act” sponsored by the Social Security Administration and the National Institute on Disability and Rehabilitation Research. Washington, DC. November 1997.
- “Managed Care: Its Growth, Development, and Future Opportunities for People with Disabilities,” conference on “Living with a Disability: Exploring the Aging Process” sponsored by the Research and Training Centers on Aging with a Disability and Aging with Spinal Cord Injury of the Rancho Los Amigos Medical Center. San Diego, CA. February 1998.
- “Centers of Excellence vs. Disease Management” and “The Future of Managed Care and Spinal Cord Injury: Trends and Opportunities,” the annual meetings of the American Spinal Injury Association (ASIA). Cleveland, OH. April 1998.
- “The Consolidation of the Medical Rehabilitation Industry: Trends, Threats, and Opportunities,” to the Rhode Island Rehabilitation Providers Association. Providence, RI. May 1998.
- “The Next Revolution in American Health Care: How Medical Rehabilitation Providers Can Flourish,” to the Rhode Island Rehabilitation Providers Association. Providence, RI. May 1998.
- “Bringing Consumer Choice to Home Care: Options and Opportunities,” keynote presentation, conference on Mak-

ing Home Care Work,” sponsored by the Maine Department of Human Services, Bureau of Elder and Adult Services and by the Continuing Health Education Partnership. Bangor, Maine. May 1998.

- “On the Frontiers of Managed Care and Brain Injury,” to the 22nd Annual Williamsburg Conference on Cognitive, Neuromedical, and Behavioral Aspects of Brain Injury. Williamsburg, VA. June 1998.
- “Treatment Outcomes: Its Emerging and Evolving Role in American Health Care,” to the American Speech & Hearing Association Conference on Leadership in Service Delivery. Tucson, AZ. June 1998.

Steven Gurgevich and Phillip Appel presented “Hypnosis in Behavioral and Rehabilitation Medicine” at a day workshop for the 40th Annual Meeting of the American Society Clinical Hypnosis. Ft. Worth, TX. March 1998.

Lauro Halstead gave a keynote address, “A Differential Diagnosis of Post-Polio Syndrome,” at the Continuing Medical Education Program, co-sponsored by Spaulding Hospital and Harvard Medical School. Boston, MA. October 1997. Other presentations include:

- “A Overview of Post-Polio Syndrome,” the World Health Organization Conference on the Management of Polio Complications, co-sponsored by the International Society of Prosthetics and Orthotics. Tunis, Tunisia. November 1997.

Robert Kane, Dennis Reeves, and Joe Bleiberg taught an 8-hour CE course, “Overview of Computerized Neuropsychological Assessment with Emphasis on the DOD Approaches,” at the Annual Meeting of the American Psychological Association. Chicago, IL. August 1997.

Anne Newman and Karen Scoggins gave a poster presentation “Neuropsychological and Functional Measures of Outcome in Brain Injury Rehabilitation,” at the annual meeting of the American Congress of Rehabilitation Medicine. Boston, MA. September 1997.

Bonnie O’Day presented a paper “Blindness, Disability, and Feminism: Identities in Conflict” at the Eighteenth Annual Meeting of the Indiana Association of Historians. DePauw, IN. February 1998. Other presentations include:

- Keynote presentation, the national conference of Association of Programs for Rural Independent Living, Albuquerque, NM.
- Moderated “Who are the Researchers, Where are They, and How Did They Get There?” Teleconference panel, the Young Scholars Conference, sponsored by the Dole Foundation in conjunction with the National Institute on Dis-

(Continued from page 18)

ability and Rehabilitation Research. Washington, DC. June 1997.

Mark Ozer, Carol Bullard-Bates and Ellen Halpern gave a poster presentation, "Measurement of Patient Participation in Planning," at the American Congress of Rehabilitation Medicine. Boston, MA. September 1997.

Paul Rao gave a presentation address, "Aging & Communication," to the 5th. Annual Geriatric Rehabilitation Conference, Boston, MA. May 1998. Other presentations include:

- "Functional Communication Management," short course, the 5th. Annual Geriatric Rehabilitation Conference. Boston, MA. May 1998.
- "Management & Counseling in Aphasia," short course, the West Virginia Speech & Hearing Association. Charleston, WVA. March 1998.
- "Reforming Health Care: Implications for Clinical Supervision in Communication Disorders," workshop, the Vanderbilt Bill Wilkerson Center for Otolaryngology & Communication Sciences. Nashville, TN. September 1997.
- "Aphasia In The Extremes," a two-day course presented to Virginia Speech and Hearing Association. Salem, VA. August 1997.
- "Satisfaction: Whose? What is it? How to measure it? A review of the literature," a paper presented to the Medical Rehabilitation: Managing Managed Care Through Research conference sponsored by the Center for Functional Assessment Research. Buffalo, NY. July 1997.

Paul Rao, Herb Baum, and Sherri Tepper presented "Outcome Measures: Critical to the Success of Our Professions" to the Annual Fall Conference of the DC Speech & Hearing Association. Washington, DC. November 1997.

Melissa Richman presented "Management of a Dysphagia Program in a Rehabilitation Hospital Setting" to the University of Maryland's graduate student class. College Park, MD. July 1998.

Andrea Ryan presented "Acute Rehabilitation Needs of the Trauma Patient" to the Trauma Nursing Symposium, Carolinas Medical Center. Charlotte, NC. April 1998. Other presentations include:

- "The Role of the Trauma ICU Nurse in the Early Rehabilitation of the TBI Patient," teleconference presentation, the Carolinas Medical Center and four outlying institutions. Charlotte, NC. April 1998.

Karen Scoggins and Melissa Zalesak gave a poster presentation, "Transitions Brain-Injury Day Treatment Pro-

gram Interdisciplinary Functional Evaluation," at the Brain Injury National Symposium. Philadelphia, PA. November 1997.

Janet Sutton presented "Putting it Together: Linking Payment to Quality and Outcomes" at the *Rehab 2000: Expanding Risks, Responsibilities, and Rewards* conference. Arlington, VA. September 1997.

Janet Sutton, Jeremy Pickreign, Rachel Halpern, Andrew Kramer, and Gerben DeJong presented a poster, "The Effect of Managed Care on Penetration on the Post-acute Site of Care of Fee-for-Service Patients with Stroke and Hip Fracture," at the annual Association for Health Services-Research conference. Washington, DC. June 1998.

Sherri Tepper presented "Research Findings on Industry Diversification and Innovation" at the *Rehab 2000: Expanding Risks, Responsibilities, and Rewards* conference. Arlington, VA. September 1997.

Moshe Torem and Phillip Appel presented "Imagery and Hypnosis" at a half-day workshop for the 40th Annual Meeting of the American Society Clinical Hypnosis. Ft. Worth, TX. March 1998.

Virginia Walls and Liz Alvarez presented, "Case Study of the Continuum of Care of a Spinal Cord Injured Patient," to the Spinal Cord Injury Special Interest Group Meeting at the APTA Combined Sections Meeting. Boston, MA. February 1998.

Jonathan Young presented a paper "The President's Committee on the Handicapped and the Origins of Cross-Disability Organizing," at the Society for Disability Studies Conference. Oakland, CA. June 1998. Other presentations include:

- "The Ideology of Disability Rights: A Comparative Perspective," paper, the Western Social Science Association Conference. Denver, CO. April 1998.
- "The Ideology of Disability Rights: A Comparative Perspective," paper, the Indiana Association of Historians Meeting.
- "Industry Consolidation: Mergers and Acquisitions," summary of conference track at final plenary session, the NRH Research Center Conference, "Rehab 2000: Expanding Risks, Responsibilities, and Rewards." Crystal City, VA. September 1997.

Appointments and Awards (July 1997 - June 1998)

Phillip Appel received the Presidential Award for Service, American Society of Clinical Hypnosis, presented at the annual Scientific meeting banquet. Fort Worth, TX. March 1998. Other appointments include:

- Co-Chairperson for the 1998 Scientific Meeting of the American Society of Clinical Hypnosis: "Hypnosis: Bridging Art, Science, and Practice." Fort Worth, TX. March 1998.

Chris Baron was appointed Co-director of the NRH Recovery Program. March 1998.

Bonnie Bunting was appointed President of the District of Columbia Speech-Language-Hearing Association. January 1998.

Amy Conroy was appointed Secretary of the District of Columbia Speech-Language-Hearing Association. January 1998.

Cathy Ellis was awarded the Edward Eckenhoff Leadership Award at the National Rehabilitation Hospital. Washington DC. February 1998.

Matt Elrod was elected Secretary of the D.C. Chapter of the APTA, starting May 1997. In addition, Matt was recently elected to serve on the nominating committee of the

Spinal Cord Special Interest Group of the APTA.

Pat Farmer was elected Chief Delegate of the D.C. Chapter of the American Physical Therapy Association (APTA) for a 3-year term, starting May 1997.

Maria Marchetti has been named adjunct professor of Physical Therapy at Marymount University in Arlington, Virginia.

Sheila Sage and **Marianne Zajazek** have been named Lab Assistants for the Physical Therapy Program at Marymount University in Arlington, Virginia.

Dolores Stephens received the "Distinguished Member Award for 1998" at the annual meeting of the Maryland Health Information Management Association. Ocean City, MD, April 1998.

Rosemary Welch has been appointed Affiliate Faculty at George Mason University College of Nursing & Health Science for the 1997-1998 Academic Year.

Jonathan Young received an honorable mention for the Irving K. Zola Award for Emerging Scholars in Disability Studies. Presented at the Society for Disability Studies Conference. June 1998. Other awards include:

- "Large Mowry Award" from the University of North Carolina at Chapel Hill, History Department, for dissertation research in Berkeley, CA. June 1998.



NRH
National
Rehabilitation
Hospital
Research Center

102 Irving Street, NW
Washington, DC 20010-2949

The NRH Research Center
is a division of the Medlanic
Research Institute



Lex Frieden
Senior Vice President
The Inst. for Rehab. & Research
1333 Moursund
Houston, TX 77030-3405