

**United States Department of the Interior
National Park Service**

**National Register of Historic Places
Inventory—Nomination Form**

For NPS use only

received

date entered

Continuation sheet Wyoming Vehicular Bridges Item number 4

Page 2

Bridge	Owner/Administrator	Location of Legal Description
10 DSD Bridge over Cheyenne River	Niobrara County	Niobrara County Courthouse P.O. Box 398 Lusk Wyoming 82225
11 DUX Bessemer Bend Bridge	Natrona County	Natrona County Courthouse 200 North Center Casper Wyoming 82602
2 DXN Bridge over Missouri River	Crook County	Crook County Courthouse P.O. Box 37 Sundance Wyoming 82729
13 EAU Arvada Bridge	Sheridan County	Sheridan County Courthouse 220 South Main Sheridan Wyoming 82801
* EAW Bridge over Little Goose Creek	Sheridan County	same
* EAX Bridge over Little Goose Creek	Sheridan County	same
14 EBF Bridge over Powder River	Sheridan County	same
15 ECR Kooi Bridge	Sheridan County	same
16 ECS Bridge over Big Goose Creek	Sheridan County	same
17 EDL Peloux Bridge	Johnson County	Johnson County Courthouse Main and Fort Streets Buffalo Wyoming 82834
18 EDZ Irigary Bridge	Johnson County	same
* EEN Schoonover Bridge	Johnson County	same
19 EFP Bridge over Owl Creek	Hot Springs County	Hot Springs County Courthouse Thermopolis Wyoming 82443
20 EJE Bridge over Shell Creek	Big Horn County	Big Horn County Courthouse Fifth and C Streets Basin Wyoming 82410
21 EJP County Line Bridge	Big Horn County	Big Horn County Courthouse Fifth and C Streets Basin Wyoming 82443
22 EJZ Bridge over Shoshone River	Big Horn County	same

United States Department of the Interior
National Park Service

National Register of Historic Places
Inventory—Nomination Form



Continuation sheet Wyoming Vehicular Bridges Item number 7

Page 13

CQA (continued)

Wyoming State 173 (Thermopolis - Buffalo Creek Road)
2.9 miles south of Thermopolis T42N, R95W, S13.
USGS Wedding of Waters 7½' quad UTM: 12.726265.4831445

DSD Bridge over Cheyenne River Niobrara County

erection date: ca. 1915 contractor: unknown
span length: 130'8" abutments: concrete bent cap and full retaining
total length: 133'0" piers: none
roadway width: 16'6" roadway: timber decking
span type: simple approaches: none

Single-span, steel rigid-connected 7-panel Pennsylvania through truss w/ sub-struts
top chords: two channels w/ cover plates and lacing; bottom chords: two channels
w/ batten plates; verticals: two channels w/ batten plates or lacing; diagonals:
two angles w/ lacing; struts, lateral and sway bracing: angle; lattice guardrail.

Niobrara County Road CN14-46 milepost: 18.7
3.2 miles east of Riverview T40N, R61W, S25.
USGS Riverview 7½' quadrangle UTM: 13.570315.4807740

✓EDZ Irigary Bridge

Johnson County (over Powder River)

erection date: 1913 contractor: Canton Bridge Company Canton Ohio
moved: 1963 mover: Etlin Petersen Const. Casper Wyoming
span length: 200'0" abutments: concrete sills on steel piles
total length: 283'0" piers: steel pile bents w/ concrete caps
roadway width: 14'2" roadway: timber decking
span type: simple approaches: 39'4" steel girders

Single-span, steel pin-connected 10-panel Pennsylvania through truss w/ sub-ties
top chords: two channels w/ cover plates and lacing; bottom chords: paired eyebars;
verticals: eyebars and two channels w/ lacing; diagonals: eyebars; struts: two
angles w/ lacing; lateral and sway bracing: round bars; angle guardrails; dec-
orative builder's plate mounted over portal strut.

Johnson County Road CN16-254 milepost: 0.1
18.1 miles northeast of Sussex T46N, R77W, S19.
USGS Hoe Ranch 7½' quadrangle UTM: 13.407210.4865885

Rairden Bridge

Big Horn County (over Big Horn River)

erection date: 1916 contractor: Monarch Engineering Company Denver
span length: 250'0" abutments: concrete retaining w/ sweptback wings
total length: 252'0" piers: none
roadway width: 15'6" roadway: timber stringers and decking

United States Department of the Interior
National Park Service
**National Register of Historic Places
Inventory—Nomination Form**



Continuation sheet Wyoming Vehicular Bridges Item number 8

Page 20

ECS (continued)

by Sheridan County in June 1914 for four steel bridges - this and another span over Big Goose Creek, a 40' span over North Piney Creek south of Sheridan) and another. With the low bid of \$4800 for all four, Canton had underbid several other national bridge erectors: the Elkhart Bridge and Iron Company, Midland Bridge Company, Clinton Bridge Company, Gregg and Stout, Missouri Valley Bridge and Iron Company, Security Bridge Company, Minneapolis Steel and Machinery Company and Walsh and Patterson. The bridges were completed by November of that year. This small four-panel Pratt pony is an excellent early example of a roadway truss configuration which is common for Wyoming.

EDL Peloux Bridge

Johnson County awarded the contract for this bridge in August 1912 to the Canton Bridge Company. With a low proposal of \$1967.50, Canton had underbid three other national bridges manufacturers - the Hennepin Bridge Company, Security Bridge Company and Missouri Valley Bridge and Iron Company. This pin-connected five-panel Pratt pony is one of the earlier and better preserved examples of a common truss configuration.

EDZ Irigary Bridge

Johnson County, on 4 February 1913, awarded the contract for this bridge over the Powder River near the town of Sussex to the Canton Bridge Company; it was completed later that year. The structure was moved from that location in 1963 by the Etlin Peterson Construction Company of Casper under contract with the Wyoming Highway Department. Moved 18 miles to the Irigary Road, it again spans the Powder River in its new location. The Irigary Bridge's span of 200' is the longest clear span of any county bridge still in use in the state. It is exceeded in simple span length by only one highway truss and one abandoned roadway truss, both 250' in length. As one of only two pin-connected Pennsylvania throughs in the survey, it is one of the most important bridges in Wyoming.

EEN Schoonover Bridge

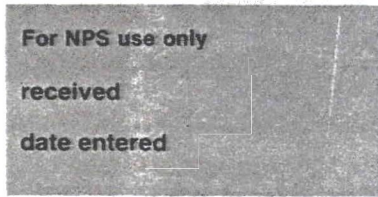
Originally a railroad bridge, by one report, the two trusses for the Schoonover Bridge were hauled over the frozen Powder River ca. 1928 and lifted into place at this location on the Schoonover Road. Classic seven-panel through trusses, the two spans are supported by the original steel pile bent center pier. This bridge is one of three two-span Pratt throughs still functional on the county road system; it exemplifies the frequent acquisition of surplus trusses for highway use by the state's counties.

EFP Bridge over Owl Creek

Build: in 1919-20 for Hot Springs County by the Monarch Engineering Company of

**United States Department of the Interior
National Park Service**

**National Register of Historic Places
Inventory—Nomination Form**



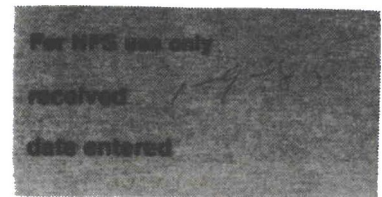
Continuation sheet Wyoming Vehicular Bridges Item number 10

Page 3

CQA		
Wyoming State 173	(Thermopolis - Buffalo Creek Road)	
2.9 miles south of Thermopolis		T42N, R95W, S13
USGS Wedding of Waters 7½' quad	UTM:	12.726265.4831445
DSD		
Niobrara County Road CN14-46	milepost:	18.7
3.2 miles east of Riverview		T40N, R61W, S25
USGS Riverview 7½' quadrangle	UTM:	13.570315.4807740
EDZ		
Johnson County Road CN16-254	milepost:	0.1
18.1 miles northeast of Sussex		T46N, R77W, S19
USGS Hoe Ranch 7½' quadrangle	UTM:	13.407210.4865885
EDZ		
Immediately south of Big Horn County Road CN9-30	(abandoned)	
5.7 miles south of Manderson		T49N, R92W, S28
USGS Rairden 7½' quadrangle	UTM:	13.267080.4897390
CKW		
U.S. 14/16 (Ucross Junction - Gillette Road; S-0302)	milepost:	55.06
3.1 miles north of Arvada		T55N, R77W, S34
USGS Arvada NE 7½' quadrangle	UTM:	13.412885.4949715
AJX		
I-25 West Service Road (old Highway 87)	milepost:	246.30
6.9 miles south of Kaycee		T42N, R81W, S09
USGS Johnson Wall Creek 7½' quad.	UTM:	13.372815.4830690
EJE		
Big Horn County Road CN9-57	milepost:	0.5
1.1 mile west of Shell		T53N, R91W, S34
USGS Shell 7½' quadrangle	UTM:	13.277400.4934870
ELY		
Fremont County Road CN10-24	milepost:	5.8
9.2 miles west of Morton		T3N, R2W, S23
USGS Argo Butte 7½' quadrangle	UTM:	12.6666120.4787605
ERT		
Uinta County Road CN19-217	milepost:	1.4
1.1 mile south of Fort Bridger		T15N, R115W, S4
USGS Fort Bridger 7½' quad.	UTM:	12.550960.4572200

United States Department of the Interior
National Park Service

National Register of Historic Places
Inventory—Nomination Form



Continuation sheet

Item number

Page

Multiple Resource Area
Thematic Group

Name Vehicular Truss and Arch Bridges in Wyoming Thematic Resources
State Wyoming

Nomination/Type of Review

Date/Signature

- | | | | |
|-------------------------------------------------|----------------------------------|--------|-----------------------|
| 11. ELS Bridge over Big Wind River | Substantive Review | Keeper | Carol Shull 2-22-85 |
| | | Attest | William B. Bushy |
| 12. Ely Wind River Diversion Dam Bridge | Entered in the National Register | Keeper | Delores Byers 2/22/85 |
| | | Attest | |
| 13. CQA Four Mile Bridge | Entered in the National Register | Keeper | Delores Byers 2/22/85 |
| | | Attest | |
| 14. EFP Bridge over Owl Creek | Entered in the National Register | Keeper | Delores Byers 2/22/85 |
| | | Attest | |
| 15. AJX Bridge over South Fork and Powder River | Entered in the National Register | Keeper | Delores Byers 2/22/85 |
| | | Attest | |
| 16. EDL Peloux Bridge | Substantive Review | Keeper | Carol Shull 2-22-85 |
| | | Attest | William B. Bushy |
| 17. EDZ Irigary Bridge | Entered in the National Register | Keeper | Delores Byers 2/22/85 |
| | | Attest | |
| 18. DUX Bessemer Bend Bridge | Entered in the National Register | Keeper | Delores Byers 2/22/85 |
| | | Attest | |
| 19. DSD Bridge over Cheyenne River | Entered in the National Register | Keeper | Delores Byers 2/22/85 |
| | | Attest | |
| 20. Hayden Arch Bridge | Substantive Review | Keeper | Carol Shull 2-22-85 |
| | | Attest | William B. Bushy |

NATIONAL REGISTER OF HISTORIC PLACES
EVALUATION/RETURN SHEET

EDZ Irigary Bridge (Vehicular Truss and Arch
Bridges in Wyoming TR)
Johnson County
WYOMING

JAN 9 1985

Working No. _____
Fed. Reg. Date: 2/4/86
Date Due: 2/8/85 - 2/23/85
Action: ACCEPT 2-22-85
 RETURN
 REJECT
Federal Agency: _____

Entered in the
National Register

- resubmission
- nomination by person or local government
- owner objection
- appeal

Substantive Review: sample request appeal NR decision

Reviewer's comments:

Recom./Criteria _____
Reviewer _____
Discipline _____
Date _____
_____ see continuation sheet

Nomination returned for: _____ technical corrections cited below
_____ substantive reasons discussed below

1. Name

2. Location

3. Classification

Category	Ownership Public Acquisition	Status Accessible	Present Use

4. Owner of Property

5. Location of Legal Description

6. Representation in Existing Surveys

Has this property been determined eligible? yes no

7. Description

Condition	Check one	Check one
<input type="checkbox"/> excellent	<input type="checkbox"/> deteriorated	<input type="checkbox"/> original site
<input type="checkbox"/> good	<input type="checkbox"/> ruins	<input type="checkbox"/> moved date _____
<input type="checkbox"/> fair	<input type="checkbox"/> unexposed	
	<input type="checkbox"/> unaltered	
	<input type="checkbox"/> altered	

Describe the present and original (if known) physical appearance

- summary paragraph
- completeness
- clarity
- alterations/integrity
- dates
- boundary selection

8. Significance

Period _____ Areas of Significance—Check and justify below

Specific dates _____ Builder/Architect _____
Statement of Significance (*in one paragraph*)

- summary paragraph
- completeness
- clarity
- applicable criteria
- justification of areas checked
- relating significance to the resource
- context
- relationship of integrity to significance
- justification of exception
- other

Faint, illegible text, possibly a stamp or reference.

Faint, illegible text, possibly a stamp or reference.

9. Major Bibliographical References

10. Geographical Data

Acreage of nominated property _____

Quadrangle name _____

UTM References _____

Verbal boundary description and justification _____

11. Form Prepared By

12. State Historic Preservation Officer Certification

The evaluated significance of this property within the state is:

_____ national _____ state _____ local

State Historic Preservation Officer signature _____

title _____ date _____

13. Other

- Maps
- Photographs
- Other

Questions concerning this nomination may be directed to _____

Signed _____ Date _____ Phone: _____



EDZ Irigary Bridge
Johnson County Wyoming
18 April 1982 photo 62

south toward north web

Clayton B. Fraser
Fraserdesign



1918
W. C. CLARK BRIDGE CO.
PULMONO, MISSOURI
TRADE MARK

10 FT. 0 IN. GAB.
LIMIT

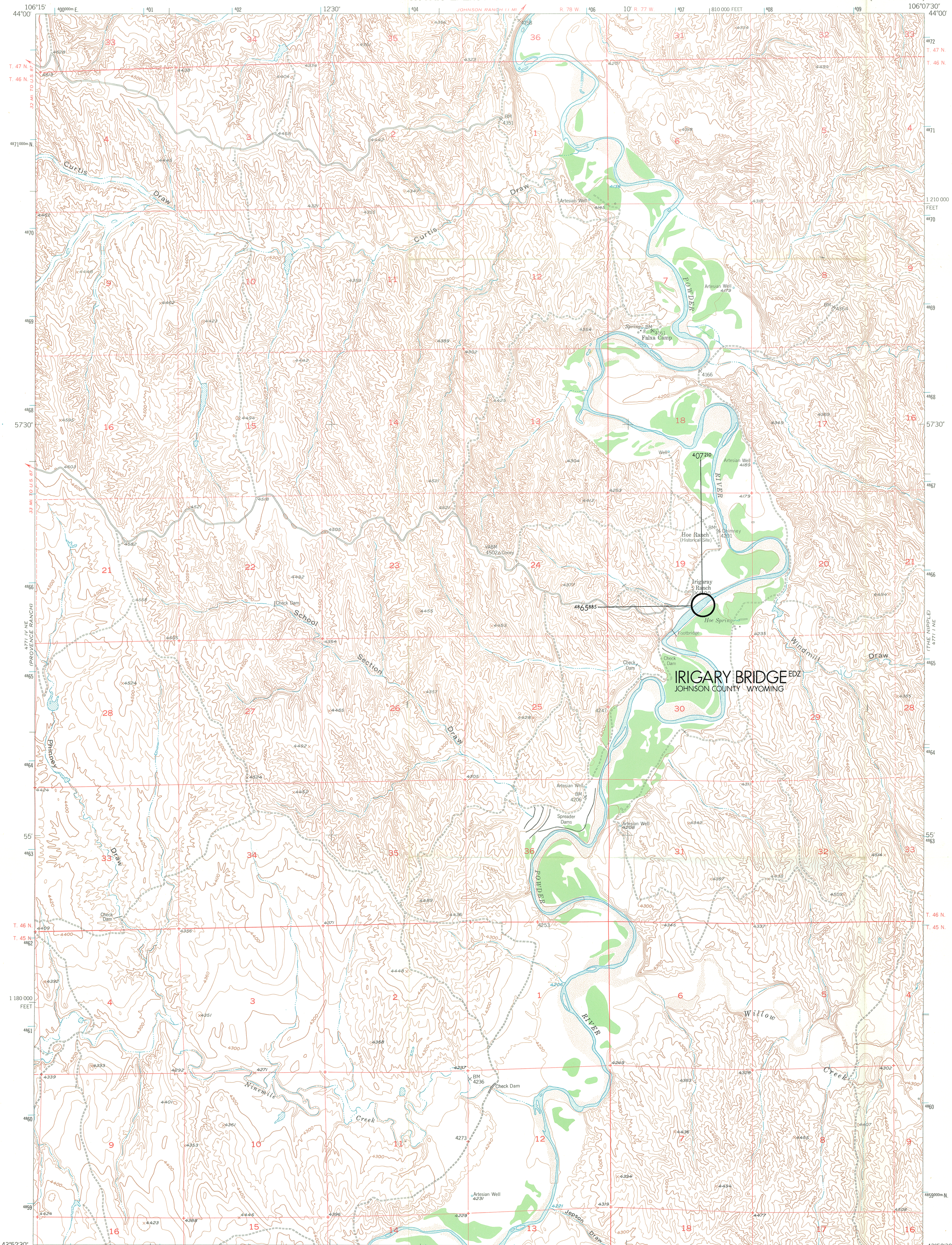
EDZ Irigary Bridge
Johnson County Wyoming
18 April 1982 photo 63
west toward east portal

Clayton B. Fraser
Fraserdesign

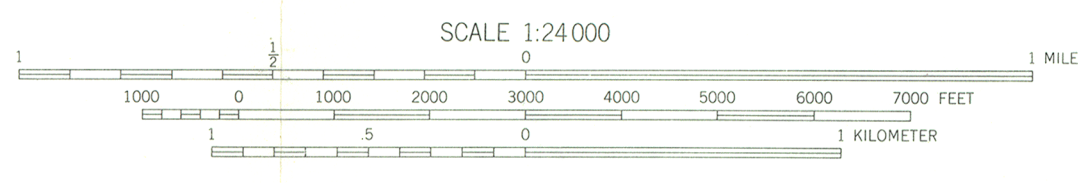
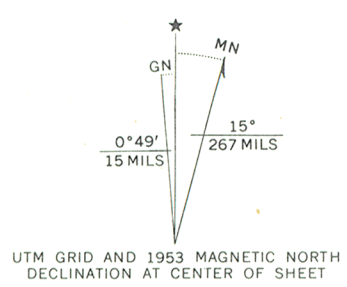


EDZ Irigary Bridge
Johnson County Wyoming
18 April 1982 photo 64
west through superstructure

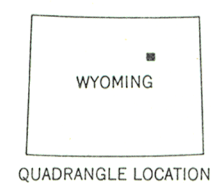
Clayton B. Fraser
Fraserdesign



Mapped, edited, and published by the Geological Survey
Control by USGS and USC&GS
Topography from aerial photographs by multiplex methods
Aerial photographs taken 1952. Field check 1953
Polyconic projection. 1927 North American datum
10,000-foot grid based on Wyoming coordinate system,
east central zone
Dashed land lines indicate approximate locations
1000-meter Universal Transverse Mercator grid ticks,
zone 13, shown in blue



CONTOUR INTERVAL 20 FEET
DATUM IS MEAN SEA LEVEL



ROAD CLASSIFICATION

Heavy-duty	4 LANE 16 LANE	Light-duty
Medium-duty	2 LANE 16 LANE	Unimproved dirt
U. S. Route		State Route

THIS MAP COMPLIES WITH NATIONAL MAP ACCURACY STANDARDS
FOR SALE BY U. S. GEOLOGICAL SURVEY, DENVER, COLORADO 80225 OR WASHINGTON, D. C. 20242
A FOLDER DESCRIBING TOPOGRAPHIC MAPS AND SYMBOLS IS AVAILABLE ON REQUEST

HOE RANCH, WYO.
N4352.5-W10607.5/7.5

1953

AMS 4771 I NW-SERIES V874