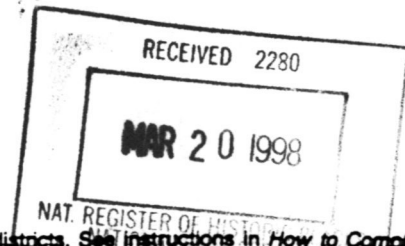


United States Department of the Interior  
National Park Service

# National Register of Historic Places Registration Form



370

This form is for use in nominating or requesting determinations for individual properties and districts. See instructions in *How to Complete the National Register of Historic Places Registration Form* (National Register Bulletin 16A). Complete each item by marking "X" in the appropriate box or by entering the information requested. If an item does not apply to the property being documented, enter "N/A" for "not applicable." For functions, architectural classification, materials, and areas of significance, enter only categories and subcategories from the instructions. Place additional entries and narrative items on continuation sheets (NPS Form 10-900a). Use a typewriter, word processor, or computer, to complete all items.

## 1. Name of Property

historic name The Miller Block

other names/site number The Miller Building

## 2. Location

street & number 808 West Sprague Avenue  not for publication

city or town Spokane  vicinity

state WA code WA county Spokane code 063 zip code 99201

## 3. State/Federal Agency Certification

As the designated authority under the National Historic Preservation Act, as amended, I hereby certify that this  nomination  request for determination of eligibility meets the documentation standards for registering properties in the National Register of Historic Places and meets the procedural and professional requirements set forth in 36 CFR Part 60. In my opinion, the property  meets  does not meet the National Register criteria. I recommend that this property be considered significant  nationally  statewide  locally. ( See continuation sheet for additional comments.)

*[Signature]* ACTING SAPO 3.4.98  
Signature of certifying official/Title Date

State of Federal agency and bureau \_\_\_\_\_

In my opinion, the property  meets  does not meet the National Register criteria. ( See continuation sheet for additional comments.)

\_\_\_\_\_  
Signature of certifying official/Title Date

State or Federal agency and bureau \_\_\_\_\_

## 4. National Park Service Certification

I hereby certify that the property is:

entered in the National Register.  
 See continuation sheet.

determined eligible for the National Register  
 See continuation sheet.

determined not eligible for the National Register.

removed from the National Register.

other, (explain): \_\_\_\_\_

Signature of the Keeper

Date of Action

*[Signature]*

5/4/98

5. Classification

Ownership of Property (Check as many boxes as apply)

Category of Property (Check only one box)

Number of Resources within Property (Do not include previously listed resources in the count.)

- Ownership options: private, public-local, public-State, public-Federal

- Category options: building(s), district, site, structure, object

Table with 2 columns: Contributing, Noncontributing. Rows for buildings, sites, structures, objects, Total.

Name of related multiple property listing (Enter "N/A" if property is not part of a multiple property listing.)

Number of contributing resources previously listed in the National Register

N/A

0

6. Function or Use

Historic Functions (Enter categories from instructions)

Current Functions (Enter categories from instructions)

COMMERCE/TRADE: business, specialty store
DOMESTIC: hotel

WORK IN PROGRESS culminating in a future hotel (domestic)

7. Description

Architectural Classification (Enter categories from instructions)

Materials (Enter categories from instructions)

ROMANESQUE REVIVAL

foundation STONE
walls BRICK
roof ASPHALT, BUILT-UP TAR
other SANDSTONE TERRA COTTA

Narrative Description

(Describe the historic and current condition of the property on one or more continuation sheets.)

See Continuation Sheets 7, pages 1 through 3.

## National Register of Historic Places Continuation Sheet

Section 7, Page 1

---

### The Miller Block Spokane County, WA

#### Narrative Description

##### *Summary Statement*

Built in 1890, the Miller Block is one of Spokane's oldest and finest commercial buildings embracing the Romanesque Revival style. The prominent parapet, projecting ornamental colonettes, sandstone voussoirs and terra cotta rinceau facade detail establish the Miller Block as an excellent example of the Romanesque Revival style and the architect's creative adaptation of architectural elements. Unlike more staid examples of the Romanesque Revival style in Spokane, the detail on the Miller Block reflects prevailing design trends appearing in Chicago before the turn of the century. These design trends led to Romanesque styling with broader, arched windows applied to commercial buildings that became one of the hallmarks of the early Chicago style. Above street-level, the Miller Block's decorative and unique facade is well-preserved and retains good integrity.

##### *1997 - Present Appearance and Condition*

The four-story Miller Block is located within Spokane's central business district and stands on Lot 11 of Block 23 in the Spokane Falls Resurvey Addition. Sandwiched among three, four and five-story commercial buildings along the north side of Sprague Avenue at West 808, the narrow Miller Block faces south. It comprises a footprint measuring 50 feet wide and 85 feet deep with 4250 square feet on each floor. A thick basalt foundation supports the building and houses a full basement. The taller, five-story Whitten Block, built in 1890, is attached to the Miller Building's east wall. A narrow alleyway abuts the Miller Block to the north, and an open courtyard and garage ramp border the building to the west. In 1996, the Miller Block was rehabilitated with the installation of original wood sash windows on the fourth floor facade and a contemporary-compatible storefront at street-level thereby returning the building to eligible status for listing in the National Register of Historic Places.

##### *Exterior*

The four-story Miller Block rises nearly 65 feet to a corbelled parapet that conceals a flat roof of built-up tar. The parapet is accentuated by a slightly taller center section and consists of a narrow foliated sandstone course, a frieze band of recessed panels, a decorative course of corbelled brick, and sandstone coping. Behind the parapet, the roof slopes slightly toward the rear and supports an elevator-stairwell tower, an additional exit at the northeast corner of the roof, mechanical and air conditioning shafts and two enclosed, vented skylights. Red bricks laid in a common bond measure sixteen to twenty inches thick and form the building's structural, brick-bearing walls. The north, east and west elevations are clad in red brick veneer while the building's facade is covered with decorative buff-colored pressed brick veneer. Found in Spokane only on the Miller Block, the narrow, elongated buff-colored bricks are an unusual size measuring one and three-quarters inches high by thirteen inches long. The facade of the Miller Building is divided

## National Register of Historic Places Continuation Sheet

Section 7, Page 2

---

### The Miller Block Spokane County, WA

symmetrically into three vertical bays by varying fenestration and projecting ornamental colonettes. The second and third floor windows are vertical, rectangular-shaped, one-over-one, double-hung wood-sash units. The fourth floor window openings form semicircular arches and feature voussoirs of rock-faced limestone. Curved molded brick reveals frame the recessed one-over-one, double-hung wood-sash windows. Curved buff-colored bricks are also used to create narrow, double pilasters (or colonettes) that rise from the third floor and continue up through the roofline. The pilasters are decorated with carved, foliated caps and supports. The second and third floors are separated by a deep, continuous band of rinceau sculpted in sandstone. The terra cotta rinceau rests on a stringcourse of rock-faced sandstone that forms lintels over second-floor windows. A narrower stone stringcourse runs above the rinceau and creates third-floor window sills. Recessed foliated panels separate third and fourth-floor window openings. The street-level facade of the Miller Building features a centrally placed canted bay with contemporary-compatible storefront design incorporating plate glass windows, wood-paneled bulkheads, transom lights and arched double-entry doors.

The west elevation of the Miller Building is clad in red brick veneer laid in a stretcher bond with paired corbelled wall projections at the first and second floor juncture, and supports three rectangular, one-over-one, double-hung wood-sash windows at each level on the second, third and fourth floors. A brick bridge controlled by the adjacent underground parking facility and designed to hold fluorescent signage is attached to the west wall and joins the Miller Block to the three-story building to the west. The rear, north elevation of the Miller Block faces a narrow alleyway and consists of symmetrically placed one-over-one, aluminum-clad, wood-sash windows at the second, third and fourth levels. The ground-floor windows are fixed multi-paned metal units with wire safety-glass panes.

#### *Interior*

The interior of the Miller Building was removed in 1914, again during the 1980s, and was rebuilt as a hotel during 1996-1997. Contemporary-compatible treatment features a first-floor lobby, lounge, office and meeting room. The original stairwell and elevator shaft anchored on the east wall have been renovated and rendered functional. A corridor leads through the Miller Block's east wall and opens to the attached Whitten Block--an 1890 five-story building also renovated for use as a hotel in concert with the Miller Block. The second, third and fourth floors of the Miller Building are exact duplicates of each other and contain six hotel suites each along with the elevator shaft, stairwell and corridors that link each floor with the adjacent Whitten Block. Corresponding to the original measurements, ceiling heights in the first-floor lobby and upstairs hotel rooms exceed twelve feet. The basement is finished with meeting rooms, enclosed mechanical-heating-electrical areas, the stairwell and elevator shaft, and a corridor that leads to the Whitten Block.

## National Register of Historic Places Continuation Sheet

Section 7, Page 3

---

### The Miller Block Spokane County, WA

#### *1890, 1914, 1916, 1929 - Historic Appearance and Alterations*

Built in 1890, the Miller Block was originally wood-framed and finished in oak. The building held street-level commercial space and upper-floor hotel rooms. One-over-one double-hung, wood-sash windows opened from the west and north elevations. The building's south facade was lit by large windows with semicircular arches on the fourth floor and rectangular, vertical windows on the second and third levels. The windows were all plain, one-over-one, double-hung, wood-sash units. In 1914, the Miller Building's support system and interior were rebuilt. In an effort to strengthen, fireproof and preserve the building, the interior was completely removed to accommodate the installation of concrete-covered steel columns, concrete beams and concrete floors. The upper floors were converted from hotel to commercial space, the basement was deepened and finished, and the interior was retrimmed in mahogany. Early drawings and photographs from 1890, 1914, 1916, and 1929 depict the original storefront with a central canted entry framed by display windows, bulkheads, transoms and a cast-iron lintel supported by square cast-iron columns. A circa 1916 photograph shows transom lights composed of prism glass and shaded by scalloped, striped awnings.

#### *1973 to 1997 - Appearance, Alterations and Condition*

In 1973, a two-story brick building attached to the Miller Building at the west elevation was demolished and an open courtyard and garage ramp were installed. The west elevation of the Miller Building was clad in new red-brick veneer embellished with paired street-level corbelled projections. A bridge designed to hold fluorescent signage was installed and secured to the west elevation of the Miller Building. Spanning the courtyard and garage ramp, the bridge is also secured to the three-story building to the west of the Miller Block. In the 1980s, the interior of the Miller Building was entirely removed leaving only the building's shell consisting of masonry walls, concrete columns, concrete floors, an empty elevator shaft and an open, unfinished, metal stairway on the east wall. The facade's iron fire escape assembly, attached signage and first-floor window awnings were removed; however, the arched fourth-floor facade windows and ceiling skylights were retained. The original street-level commercial bays, transom space and canted entrance were covered with brown-brick veneer, arched windows and a central entryway flush with the building's facade. In 1996-1997, sensitive contemporary-compatible renovation and restoration work was initiated resulting in the building's return to its original use as a hotel. The original elevator shaft, east-wall stairway and arched fourth-floor facade windows were renovated and restored. Although not presently used, the two original skylights of the Miller Block were repaired, vented and secured with a protective aluminum covering designed to preserve them for future use. A new contemporary-compatible first-floor storefront with a canted entry was rebuilt and mimics the historic facade of the Miller Block as seen in turn-of-the-century drawings and photographs of the building. Even though extensive interior and exterior alterations have been made to the Miller Block, the building's facade above street-level retains good integrity conveying the architect's personal artistic imprint and interpretation of the Romanesque Revival style.

## National Register of Historic Places Continuation Sheet

Section 8, Page 1

---

### The Miller Block Spokane County, WA

#### Narrative Statement of Significance

##### *Summary Statement*

Built in 1890, the Miller Block is one of the finest examples of the Romanesque Revival style seen on commercial buildings erected immediately after the Great Fire of 1889 in Spokane. The Miller Block's decorative facade--embellished with finely molded brick and stonework and intricate rinceau rarely seen in Spokane--bespeaks the artistic skill and creativity of the building's architect, William J. Carpenter. Eligible for listing in the National Register of Historic Places under Criterion C, the Miller Block is significant for its unique use of architectural details and embodies the creative excellence of an accomplished architect. The Miller Block was built for Spokane entrepreneur Stanley Miller, and was later owned and operated for over 80 years by the Leonard-Ryan family and Anna Leonard Ryan--an early Spokane businesswoman who achieved success in turn-of-the-century Spokane at a time when the business world was dominated by men.

##### *Historical Context*

###### *Early Spokane*

Founded in 1873, the settlement of Spokane Falls consisted of a sawmill, a trading post and a series of unharnessed waterfalls. Initially named for the Spokane Indians who regarded the falls as an important fishing site, Spokane was also named for the cascading waterfalls spilling forth from the Spokane River. By the late 1870s, railroad routes linking Spokane to the Eastern United States were being laid, and significant gold and silver lodes were discovered in the Coeur d'Alene mining area north of the Spokane. The town was officially designated in 1881 by the Territorial Legislature and expansion was rapid during the decade of 1880-1890. Settlers arrived continuously and businesses multiplied in Spokane's downtown core. The community grew and gained increasing recognition as a center for mining, lumber, agriculture, and rail transport. The area's economic climate, along with nationally improved financial conditions, led to a bustling building boom, and by the summer of 1889, frame structures were being replaced with more permanent and imposing brick "blocks." On Sunday afternoon 4 August 1899, a huge fire devastated the town destroying 32 blocks of the city's business center. The tragedy gave rise to a frenetic and unparalleled period of building, and embarked the city on a 30-year cycle of growth and prosperity. The Miller Block is one of the few remaining structures from Spokane's immediate post-fire building surge and symbolizes the explosive rebirth of the city.

###### *Stanley Miller and the Miller Block*

The Miller Block stands just three blocks south and two blocks west of the intersection of Howard and Front Streets (renamed Spokane Falls Boulevard)--the site of Spokane's first buildings. Stanley Miller, a co-proprietor of the Spokane Ice Company, purchased Lot 11

8. Statement of Significance

Applicable National Register Criteria (Mark "x" in one or more boxes for the criteria qualifying the property for National Register listing.)

- A Property is associated with events that have made a significant contribution to the broad patterns of our history.
B Property is associated with the lives of persons significant in our past.
C Property embodies the distinctive characteristics of a type, period, or method of construction or represents the work of a master, or possesses high artistic values, or represents a significant and distinguishable entity whose components lack individual distinction.
D Property has yielded, or is likely to yield, information important in prehistory or history.

Criteria Considerations (Mark "x" in all the boxes that apply.)

Property is:

- A owned by a religious institution or used for religious purposes.
B removed from its original location.
C a birthplace or grave.
D a cemetery.
E a reconstructed building, object, or structure.
F a commemorative property.
G less than 50 years of age or achieved significance within the past 50 years.

Areas of Significance (Enter categories from instructions)

ARCHITECTURE

Period of Significance

1890

Significant Dates

1890, 1914

Significant Person

(Complete if Criterion B is marked above)

Cultural Affiliation

Architect/Builder

William J. Carpenter, Architect

Narrative Statement of Significance

(Explain the significance of the property on one or more continuation sheets.) See Continuation Sheets Section 8, pages 1-4.

9. Major Bibliographical References

Bibliography

(Cite the books, articles, and other sources used in preparing this form on one or more continuation sheets.)

Previous documentation on file (NPS):

- preliminary determination of individual listing (36 CFR 67) has been requested
previously listed in the National Register
previously determined eligible by the National Register
designated a National Historic Landmark
recorded by Historic American Buildings Survey #
recorded by Historic American Engineering Record #

Primary location of additional data:

- State Historic Preservation Office
Other State agency
Federal agency
Local government
University
Other

Name of repository:

Spokane City/County Historic Preservation Office



## National Register of Historic Places Continuation Sheet

Section 8, Page 2

---

### The Miller Block Spokane County, WA

on Block 23 in 1887. He built a two-story frame structure with rooming units over a first-floor shop. A handful of frame dwellings surrounded Miller's shop and rooming house including Leydford Whitten's stores to the east, the Northern Pacific Livery Stable to the west and the Falls City Opera House to the northeast. In 1889, Spokane's Great Fire spread through the city's downtown core and destroyed Stanley Miller's two-story frame building, his neighbor's businesses and nearly the entire downtown central business district.

Caught up in Spokane's post-fire expansion, Stanley Miller invested \$26,000 in the rebuilding on his new Miller Block. Located on one of the city's busiest streets directly across from the world-famous and lavishly appointed Davenport Hotel, the Miller Block was erected in 1890--just one year after the Great Fire of 1889. Three years later, Miller succumbed to the economic depression of 1893 and lost his mortgaged Miller Block. The Dutch-owned Hypotheek Bank assumed title to the property until Daniel Drumheller, one of Spokane's early mayors, purchased it in 1903 for \$35,000. Eight months later, Drumheller sold the Miller Block to Spokane mining industrialist James Leonard.

In 1906, the Sherman Clay Music Company, a business specializing in pianos, moved into the ground-floor commercial space of the Miller Block. The upper three floors continued to operate successfully as a hotel variously called the New Jersey, the Comfort and the Vernon. In 1914, the Miller Block was redesigned by noted Spokane architect Albert Held and rebuilt converting the entire structure, except for the west end of the ground floor, for use by the Sherman Clay Music Company. A 21 June 1914 *Spokesman-Review* article notes the building was strengthened with steel and concrete construction and the basement was deepened. Sound-proof record and piano rooms, piano and Victrola display areas, and an auditorium designed to accommodate 200 people were built on the first, second and third floors. The first three floors were finished with mahogany while the fourth floor was equipped with a piano repair and refinishing plant. In 1924, after an 18-year leasehold, the music company relocated to West Riverside Avenue and the Miller Block's commercial space was then occupied by Western Union Telegraph, Spokane Northern Telegraph and District Telegraph companies. With telegraph offices linked to Chicago, Milwaukee and Saint Paul located next door in the Whitten Block, and the star-studded Davenport Hotel across the street, the West 800 block of Sprague Avenue and the Miller Building teemed with activity--from businessmen and travelers to uniformed messengers and bicyclists. Second-floor tenants in the Miller Building have included labor unions, the Arthur Murray Dance Studio, the Business and Professional Women's Club and the Canadian Legion.

## National Register of Historic Places Continuation Sheet

Section 8, Page 3

---

### The Miller Block Spokane County, WA

#### *Anna Leonard Ryan*

James Leonard bought the Miller Block in 1903 and died seven years later in 1910. He was survived by his wife Anna and their three young children. In addition to her all-consuming duties and responsibilities as a new single-parent and family bread-winner, Anna Leonard established herself as a successful and prominent Spokane businesswoman--an incomparable accomplishment in early Spokane where men dominated the business world. She continued to raise her three children, assumed her husband's proprietorship role for the Miller Building, successfully managed its tenants and gradually amassed substantial wealth in real estate. After 20 years of widowhood, Anna Leonard remarried in 1930. Her second husband, Edward P. Ryan, was a noted Spokane businessman and Old National Bank board member. Anna's children achieved prominence as well. Her daughter, Margaret Rose, married Robert Paterson who followed his father as president of Spokane's Crescent Department Store. Her two sons, James and William, worked in the mining industry, owned a mining and mortgage investment company and served as mining board presidents. The Leonard family retained ownership of the Miller Building for over 80 years and sold it in the mid-1980s. Until recently, the Miller Block had enjoyed continuous business for nearly a century. It remains a tangible reminder of Spokane's significant economic growth and the tremendous building boom that commenced after the Great Fire of 1889.

#### *Architectural Significance (Criterion C)*

The Miller Block is one of Spokane's finest examples of the Romanesque Revival style of architecture popular throughout the United States from the 1870s to 1900. The block's exquisitely detailed facade reveals design rarely seen in early Spokane buildings and reflects the trend-setting artistry of the architect. Designed by William J. Carpenter, the Miller Block is significant as the most extant Carpenter-designed commercial building remaining in Spokane.

#### *William J. Carpenter and the Miller Block*

William J. Carpenter was born in England and practiced architecture in Spokane for less than two years from 1889 through 1890. Although he worked in Spokane for a short time, Carpenter designed several prominent buildings. Of Carpenter's remaining commercial buildings, only the Miller Block's facade retains good integrity above street-level. The six-story Hyde Block on West Riverside Avenue was the largest post-fire building he designed, but was demolished in 1979. Another landmark building designed by Carpenter is the Loewenburg Brothers Mercantile on the southeast corner of Spokane Falls Boulevard and Howard Street. The building was converted to the Coeur d'Alene Hotel in 1910 and has been altered substantially since then. Another greatly altered building designed by Carpenter is the Wilson-Clark Building. Located on the southwest corner of Sprague Avenue and Post Street, this hastily constructed two-story building was erected after the

## National Register of Historic Places Continuation Sheet

Section 8, Page 4

---

### The Miller Block Spokane County, WA

Fire of 1889 and purchased by Louis Davenport. In 1903, Davenport rebuilt Carpenter's Wilson-Clark Block and created the Mission style Davenport Restaurant-Pennington Hotel wing of the Davenport Hotel. In addition to commercial buildings, Carpenter designed six residential homes in Spokane and is perhaps best-known for his design of the high-style landmark Loewenburg Mansion in Browne's Addition. The Queen Anne style house employs Romanesque Revival style arches and stone lintels similar to the Miller Block's decorative facade, and is one of Spokane's finest residential buildings. Of the other five residential homes, only the turreted Currie-Forrest House near Corbin Park remains.

Stylistically, Carpenter's buildings demonstrate a familiarity with the Romanesque Revival style and a skill for introducing variety and detail rarely seen in post-fire Spokane buildings. Of the post-Victorian building styles that emerged in downtown Spokane on Riverside, Main and Sprague Avenues after the Great Fire of 1889, the dominant style was Romanesque Revival. Larger buildings on Riverside were generally plain except for towers, parapet details and heavy window surrounds. Within this context, the Miller Block was singular with its intricate terra cotta rinceau and finely molded buff-colored brick. Only the Review Building--designed by Chauncey Seaton and completed one year after the Miller Block--exhibits scroll work of comparable design. In summary, the Miller Block is architecturally significant for its unique adaptation of the Romanesque Revival style and the creative use of artistic details. Of the nine commercial buildings designed by Carpenter, six were destroyed and two were extensively altered. The Miller Block, retaining good facade integrity above street-level and conveying the architect's original expression, is the best example of a commercial building designed by William Carpenter remaining in Spokane.

## National Register of Historic Places Continuation Sheet

Section 9, Page 1

---

### The Miller Block Spokane County, WA

#### Major Bibliographical References

##### *Bibliography*

- Beschel, Jean Leonard. Personal interview with Sally Reynolds, January, 1993.
- Durham, N. W. *Spokane and the Inland Empire*. Spokane, 1912.
- Edwards, J. *Illustrated History of Spokane County*, Spokane, 1900.
- Hyslop, Robert. *Spokane's Building Blocks*, Spokane: Standard Blueprint Company, 1983.
- James, William. *The Miller Building Spokane Register of Historic Places Nomination*, Spokane City/County Historic Preservation Office, 1992.
- Polk, R. L. *City Directory*, Spokane, 1885-1997.  
Pioneer Title Company, Tract Books.
- Reynolds, Sally. *The Miller Building Spokane Register of Historic Places Nomination (draft submittal)*, 1993.
- \_\_\_\_\_. Personal interviews with Linda Yeomans, July through December, 1997.
- Sanborn Fire Insurance Maps*, Spokane Public Library, 1888-1952.
- Spokane Daily Chronicle*, 4 August 1890, 31 December 1890, 11 December 1906.
- Spokane Falls Review*, 5 August 1890.
- Spokesman-Review*, 2 April 1903, 21 June 1914.
- Spokane Public Library, Northwest Room, vertical files.

FOX RIVER BOND

## National Register of Historic Places Continuation Sheet

Section 10, Page 1

---

**The Miller Block**  
**Spokane County, WA**

### **Geographical Data**

#### ***Verbal Boundary Description***

Parcel Number 35183.0614

Resurvey and Addition to Spokane Falls, Lot 11, Block 23

#### ***Boundary Justification***

The nominated property includes the entire parcel and urban legal description which contains the Miller Block.

## National Register of Historic Places Continuation Sheet

### Section Additional Information, Page 1

---

#### The Miller Block Spokane County, WA

#### *Maps*

USGS Map including the property's location and UTM references.

#### *Photographs and Drawings*

Eighteen (18) black and white photographs to include:

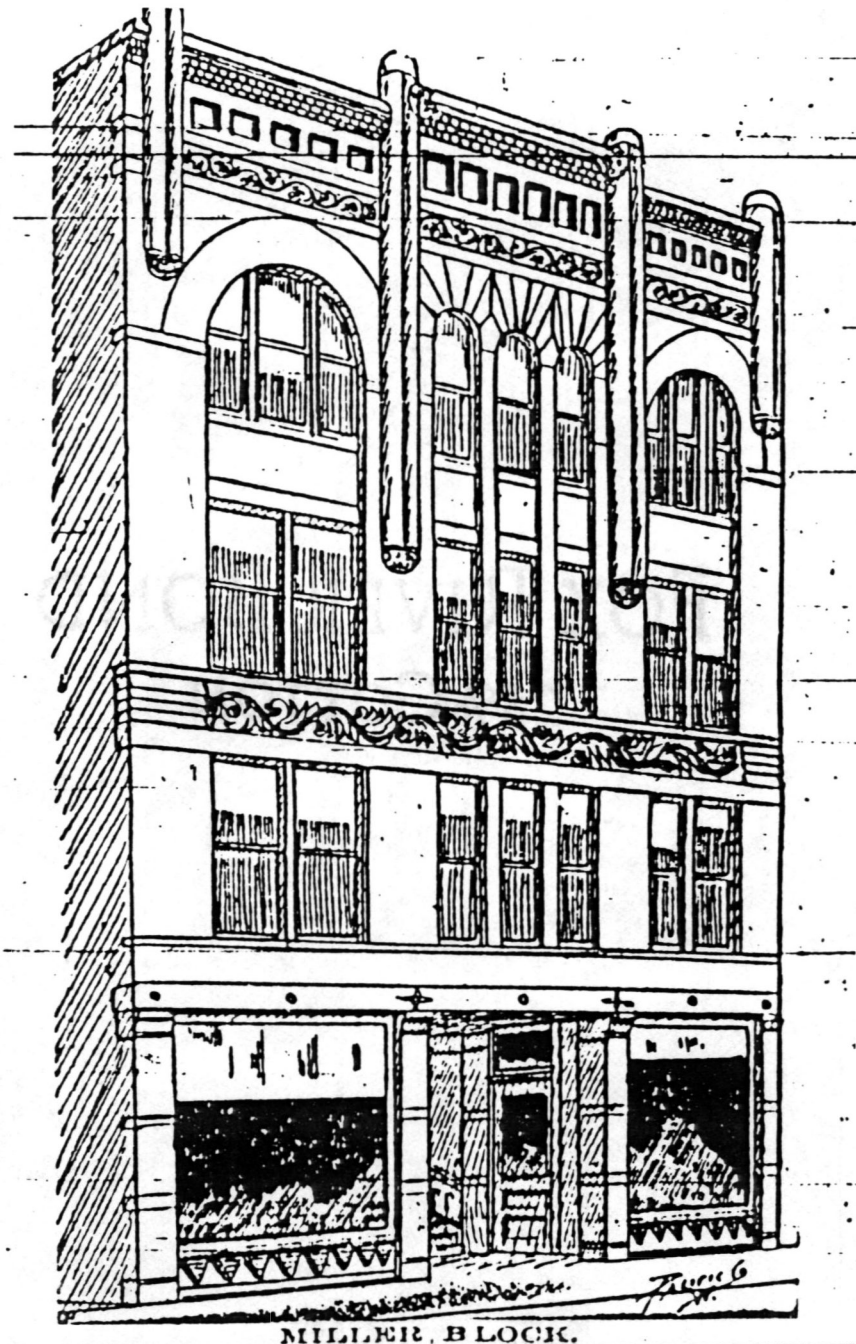
| <u>photograph number</u> | <u>date of photo</u> | <u>photographer</u> | <u>negative location</u> | <u>description</u>                             |
|--------------------------|----------------------|---------------------|--------------------------|--|
| 1                        | 1890                 | drawing             | SFR 5 Aug. 1890          | south facade                                   |
| 2                        | 1916                 | unknown             | WWP, Spokane             | south facade                                   |
| 3                        | 1997                 | L. Yeomans          | L. Yeomans               | southwest<br>corner and<br>facade              |
| 4                        | 1997                 | L. Yeomans          | L. Yeomans               | south facade                                   |
| 5                        | 1997                 | L. Yeomans          | L. Yeomans               | south facade                                   |
| 6                        | 1997                 | L. Yeomans          | L. Yeomans               | south<br>storefront                            |
| 7                        | 1997                 | L. Yeomans          | L. Yeomans               | south facade                                   |
| 8                        | 1997                 | L. Yeomans          | L. Yeomans               | south<br>storefront                            |
| 9                        | 1997                 | L. Yeomans          | L. Yeomans               | interior, front<br>lobby entry                 |
| 10                       | 1997                 | L. Yeomans          | L. Yeomans               | interior, first<br>floor elevator              |
| 11                       | 1997                 | L. Yeomans          | L. Yeomans               | interior, first<br>floor lobby                 |
| 12                       | 1997                 | L. Yeomans          | L. Yeomans               | interior, first<br>floor lobby                 |
| 13                       | 1997                 | L. Yeomans          | L. Yeomans               | interior, fourth<br>floor south<br>wall window |
| 14                       | 1997                 | L. Yeomans          | L. Yeomans               | interior, fourth<br>floor closet               |
| 15                       | 1997                 | L. Yeomans          | L. Yeomans               | interior, fourth<br>floor hallway              |
| 16                       | 1997                 | L. Yeomans          | L. Yeomans               | interior, fourth<br>floor west wall            |
| 17                       | 1997                 | L. Yeomans          | L. Yeomans               | interior,<br>stairwell                         |
| 18                       | 1997                 | L. Yeomans          | L. Yeomans               | basement<br>mechanical<br>room                 |

# National Register of Historic Places Continuation Sheet

Section Additional Information, Page 2

The Miller Block  
Spokane County, WA

Photograph Number 1: Drawing of the Miller Block from 1890, south facade



## National Register of Historic Places Continuation Sheet

## National Register of Historic Places Continuation Sheet

### Section Additional Information, Page 3

### Section Additional Information, Page 3

The Miller Block  
Spokane County, WA

The Miller Block  
Spokane County, WA

Photograph Number 2: Miller Block, south facade from 1916



## National Register of Historic Places Continuation Sheet

National Register of Historic Places  
Continuation Sheet

### Section Additional Information, Page 4

Section Additional Information, Page 4

#### The Miller Block Spokane County, WA

The Miller Block  
Spokane County, WA

Photograph Number 3: Southwest corner of Miller Block, 1997 photo  
Photograph Number 4: South facade

Photograph Number 3: Southwest corner of Miller Block, 1997 photo  
Photograph Number 4: South facade



**National Register of Historic Places  
Continuation Sheet**

**Section Additional Information, Page 5**

**The Miller Block  
Spokane County, WA**

Photograph Number 5: Southwest facade, 1997 photo  
Photograph Number 6: South facade, street-level storefront detail

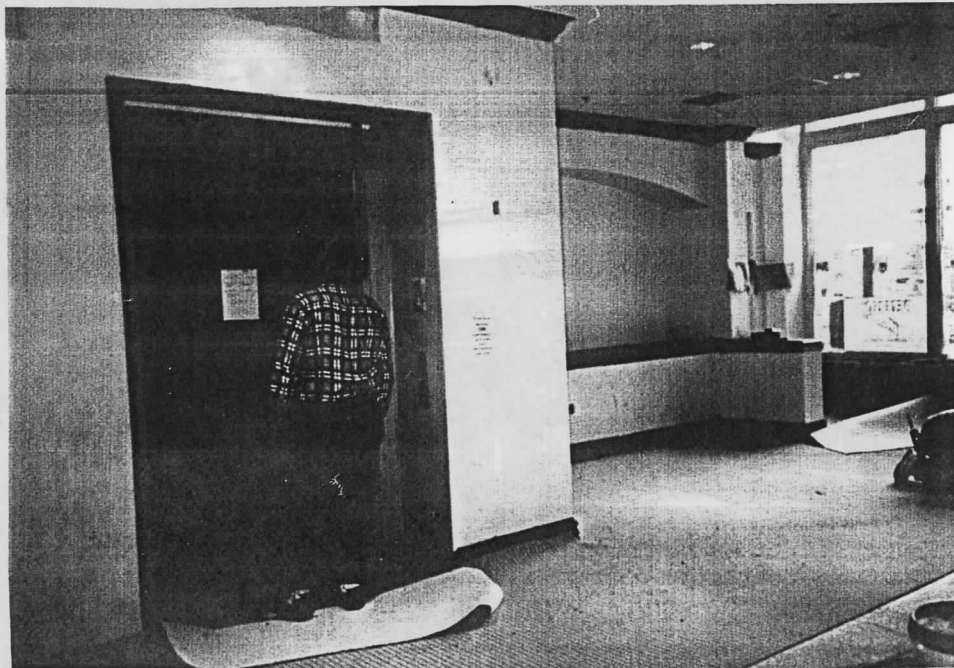


## National Register of Historic Places Continuation Sheet

Section Additional Information, Page 6

### The Miller Block Spokane County, WA

Photograph Number 9: Front lobby, south wall, first floor, 1997 photo  
Photograph Number 10: Front lobby, east wall, first floor elevator, 1997 photo



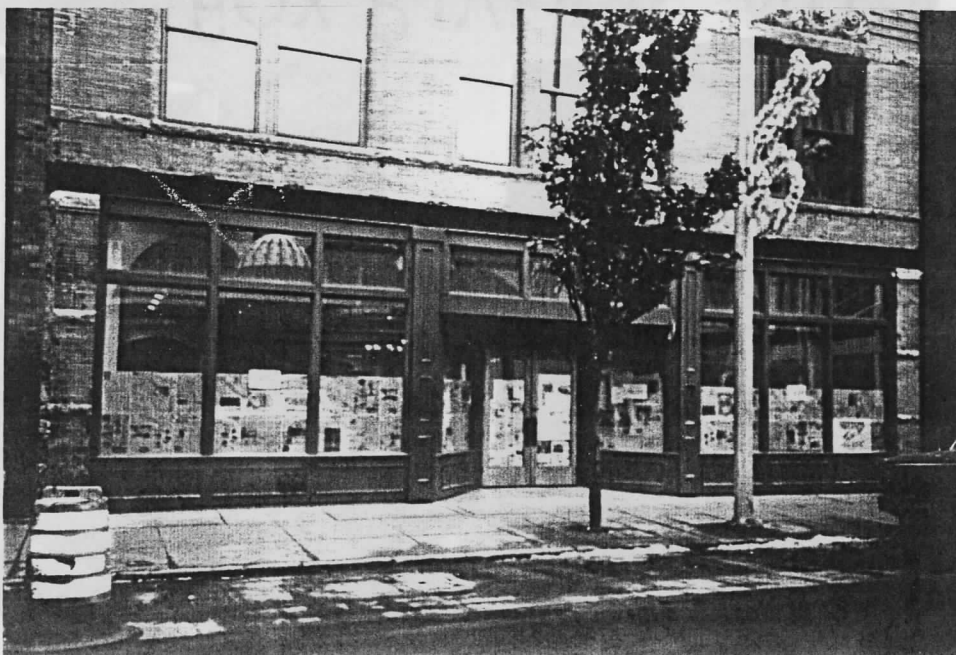
United States Department of the Interior  
National Park Service

## National Register of Historic Places Continuation Sheet

Section Additional Information, Page 6

### The Miller Block Spokane County, WA

Photograph Number 7: South facade upper-level detail, 1997 photo  
Photograph Number 8: South facade street-level storefront detail

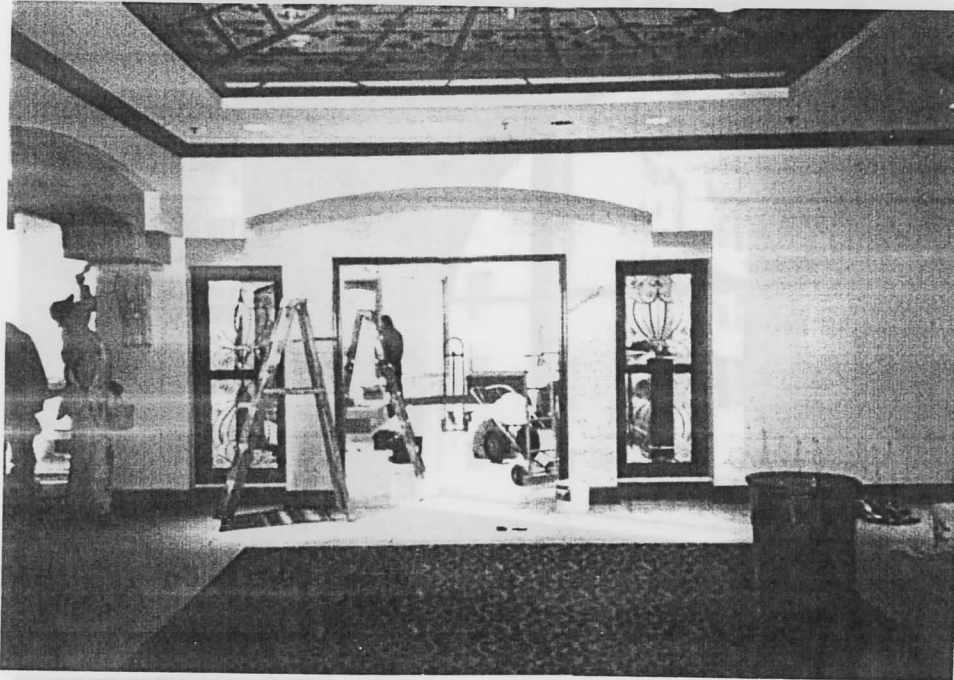


## National Register of Historic Places Continuation Sheet

### Section Additional Information, Page 7

#### The Miller Block Spokane County, WA

Photograph Number 11: First floor, lobby looking south, 1997 photo  
Photograph Number 12: First floor, lobby, 1997 photo

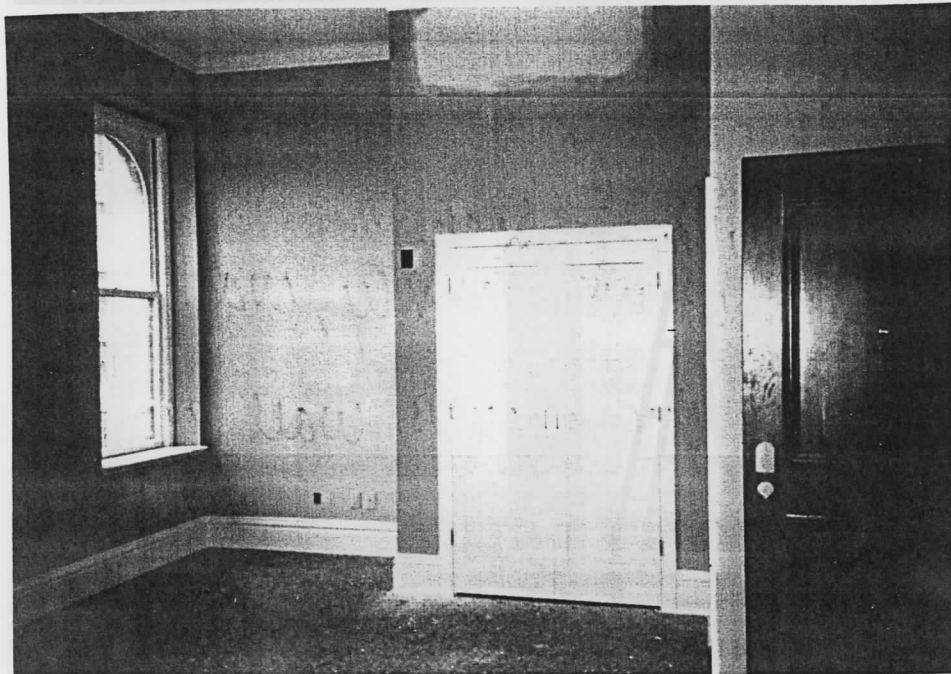
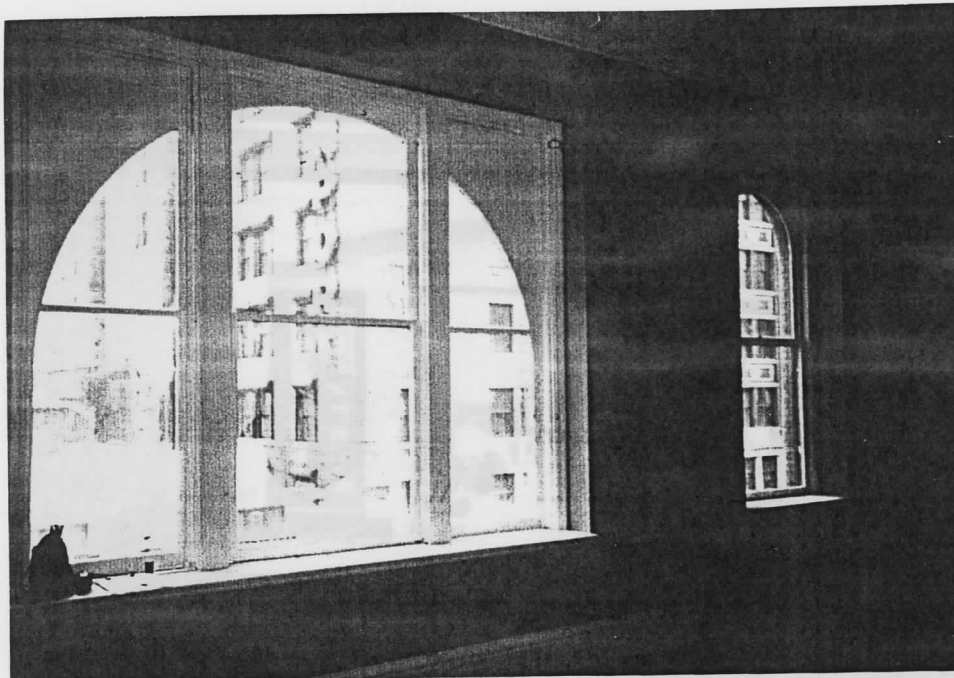


## National Register of Historic Places Continuation Sheet

Section Additional Information, Page 8

**The Miller Block**  
Spokane County, WA

Photograph Number 13: Fourth floor hotel room, south wall and window  
Photograph Number 14: Fourth floor hotel room, southwest corner

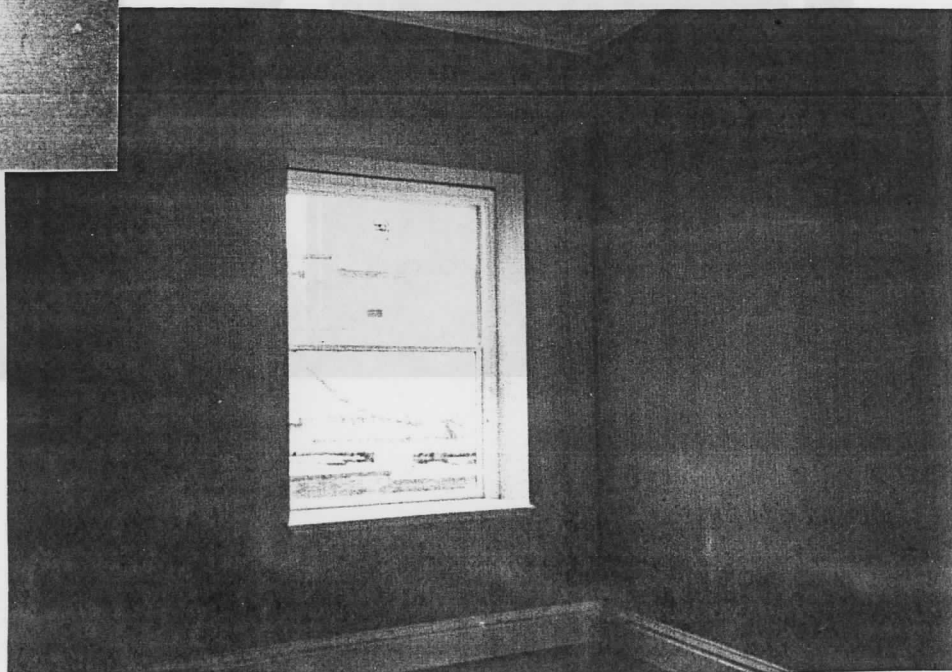


## National Register of Historic Places Continuation Sheet

### Section Additional Information, Page 9

#### The Miller Block Spokane County, WA

Photograph Number 15: Fourth floor hallway  
Photograph Number 16: Fourth floor hotel room, west wall and window

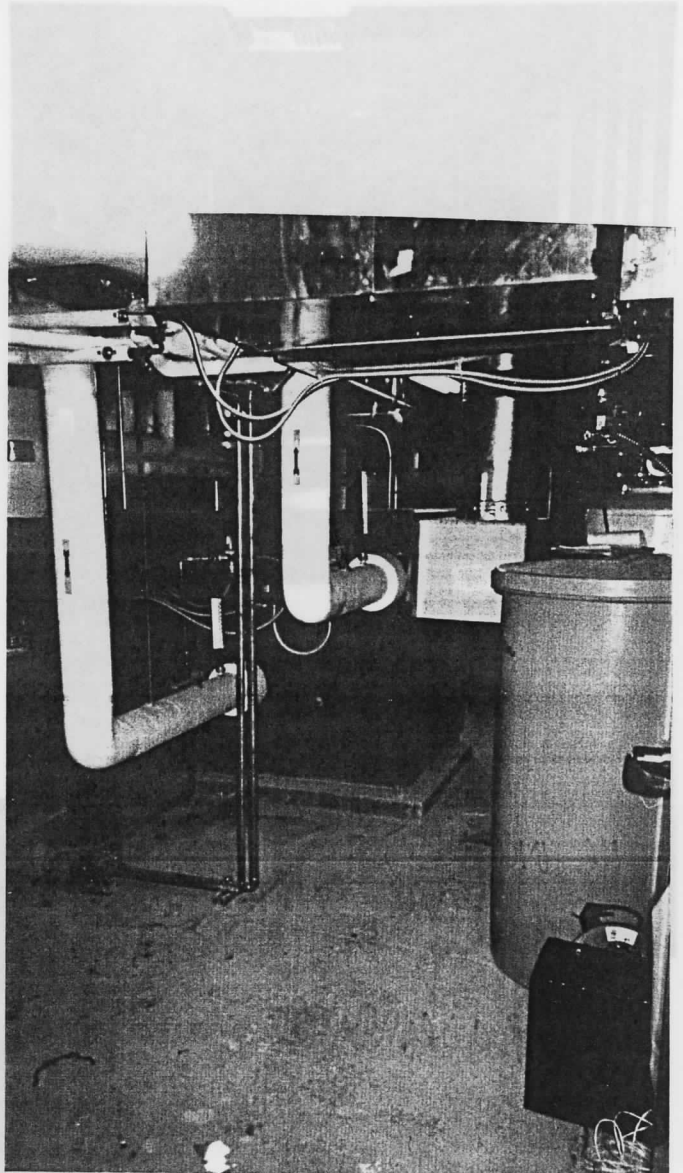


## National Register of Historic Places Continuation Sheet

### Section Additional Information, Page 10

#### The Miller Block Spokane County, WA

Photograph Number 17: Stairwell, east wall, photo 1997  
Photograph Number 18: Basement mechanical room, photo 1997



**United States Department of the Interior  
National Park Service**

**National Register of Historic Places  
Continuation Sheet**

Section number \_\_\_\_\_ Page \_\_\_\_\_

**SUPPLEMENTARY LISTING RECORD**

NRIS Reference Number: 98000370

Date Listed: 5/4/98

Miller Block  
Property Name

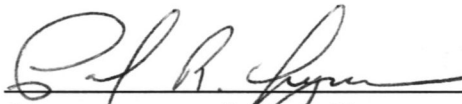
Spokane  
County

WA  
State

N/A

Multiple Name

-----  
This property is listed in the National Register of Historic Places in accordance with the attached nomination documentation subject to the following exceptions, exclusions, or amendments, notwithstanding the National Park Service certification included in the nomination documentation.

  
Signature of the Keeper

5/4/98  
Date of Action

=====  
Amended Items in Nomination:

Period of Significance:

The period of significance is revised to add: 1914.

[The dates mark the date of construction and the date of significant alterations.]

This information was confirmed with L. McCroskey of the WA SHPO.

DISTRIBUTION:

National Register property file

Nominating Authority (without nomination attachment)

UNITED STATES DEPARTMENT OF THE INTERIOR  
NATIONAL PARK SERVICE

NATIONAL REGISTER OF HISTORIC PLACES  
EVALUATION/RETURN SHEET

REQUESTED ACTION: NOMINATION

PROPERTY Miller Block  
NAME:

MULTIPLE  
NAME:

STATE & COUNTY: WASHINGTON, Spokane

DATE RECEIVED: 3/20/98 DATE OF PENDING LIST: 3/27/98  
DATE OF 16TH DAY: 4/12/98 DATE OF 45TH DAY: 5/04/98  
DATE OF WEEKLY LIST:

REFERENCE NUMBER: 98000370

NOMINATOR: STATE

REASONS FOR REVIEW:

APPEAL: N DATA PROBLEM: N LANDSCAPE: N LESS THAN 50 YEARS: N  
OTHER: N PDIL: N PERIOD: N PROGRAM UNAPPROVED: N  
REQUEST: N SAMPLE: N SLR DRAFT: Y NATIONAL: N

COMMENT WAIVER: N

     ACCEPT      RETURN      REJECT                      DATE

ABSTRACT/SUMMARY COMMENTS:

**The Miller Block is significant under National Register Criterion C (Architecture). Erected in 1890, the four-story brick and sandstone building is a fine local example of Romanesque Revival style commercial design. Although gutted (interior) in recent rehabilitation work, the building retains the basic character defining forms and details that convey its historic significance within the context of late nineteenth and early twentieth century Spokane.**

RECOM./CRITERIA Accept C

REVIEWER Paul R. Lusignan DISCIPLINE HISTORIAN

TELEPHONE                      DATE 5/4/98

DOCUMENTATION see attached comments Y/N see attached SLR Y/N



#3

3560122  
1111111  
2

The Miller Block  
Spokane County, WA  
SW corner - 1997



#4

356 0122 N N N 22

Miller Block  
Spokane County,  
WA.

1997 - SOUTH facade



#5

356 0122 N N N 22

Miller Block  
Spokane County,  
wa.

South facade 1997



#6

THE MILLER BLOCK  
SPOKANE COUNTY, WA

1997- SOUTH facade entrance

356 0122 N 111 22



# 7

THE MILLER BLOCK  
SPOKANE COUNTY, WA.  
SOUTH facade 1997

7560122

11/11/97



#8

The Miller Block  
Spokane County, WA

South facade store-front

1997

2001 01 22 14:11:22



#9

Tire miller BLOCK  
Spokane County, wa  
south wall lobby 1997

2010 11 12 10 52



#10

The Miller Block  
Spokane County, WA.

1997 - last - wall just - floor elevator

356 0122 11-11-99



#11

356 0122 411422

Miller Block - Spokane County, Wa.  
1997 just-floor lobby looking south



#12

Miller Block  
Spokane County, WA

1991 - first floor NW corner lobby



#13

THE MILLER BLOCK  
Spokane County, WA.

fourth floor original window  
south wall - 1997

356 0122 1111 1111



#14

Miller Block

Spokane County, WA

fourth floor south wall window  
1991 photo

2006 01 20 11:11:29



#15

356 0122 N N M 22

Miller Brock - Spokane  
County,  
WA.

2nd floor hallway 1997



#16

356 0122 N N N 22

MILLER BLOCK - Spokane County, WA  
2nd floor EAST Wall - 1997



#17

356 0122 N N N 1 2

The mine Block  
Spokane County, wa.  
1997 east-wall stairs



#18

356 0122 N N N 32

Miller Block - Spokane  
County, wa  
Basement

## Missing Core Documentation

**Property Name**

Miller Block

**County, State**

Spokane County,  
WA

**Reference Number**

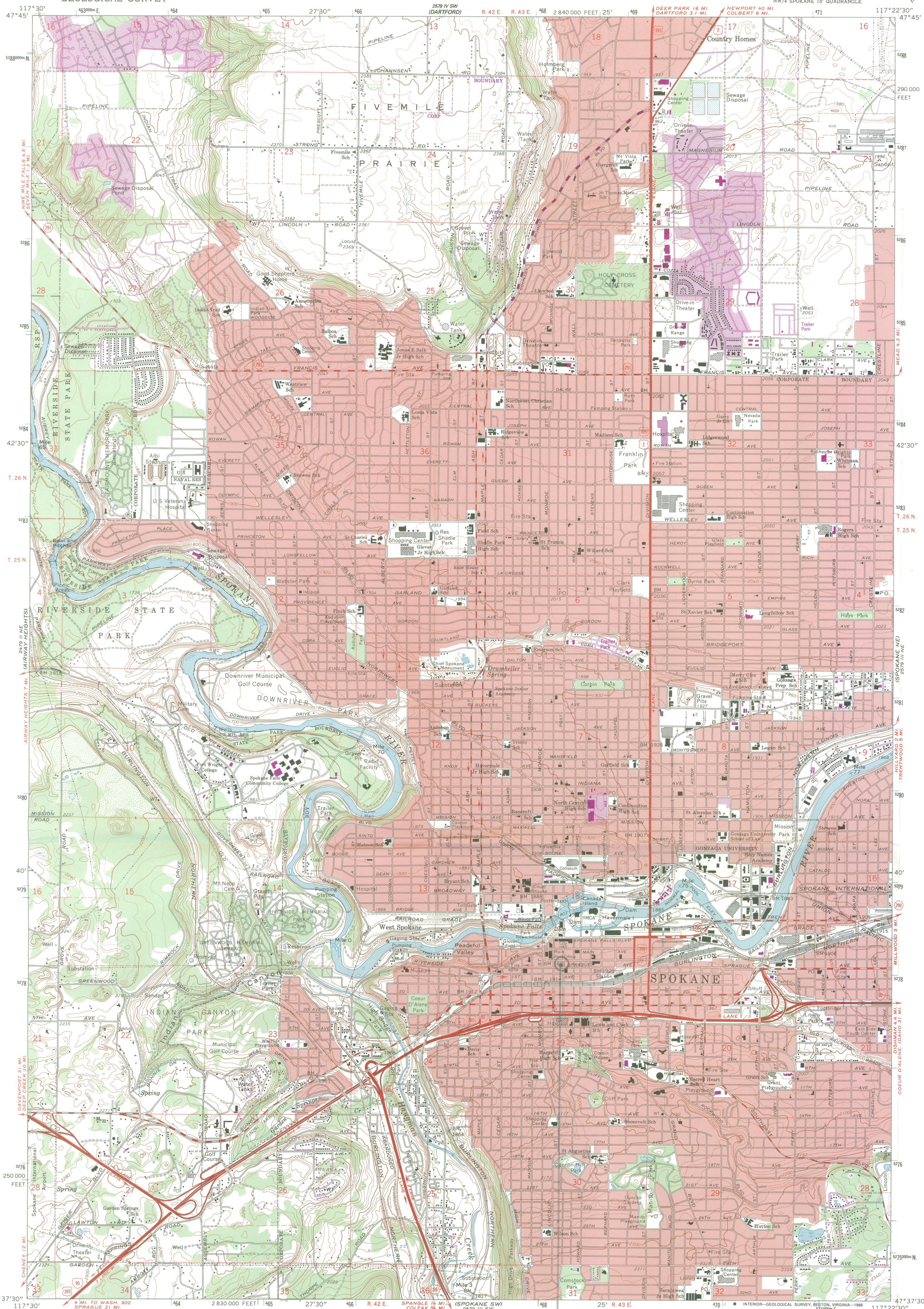
98000370

The following Core Documentation is missing from this entry:

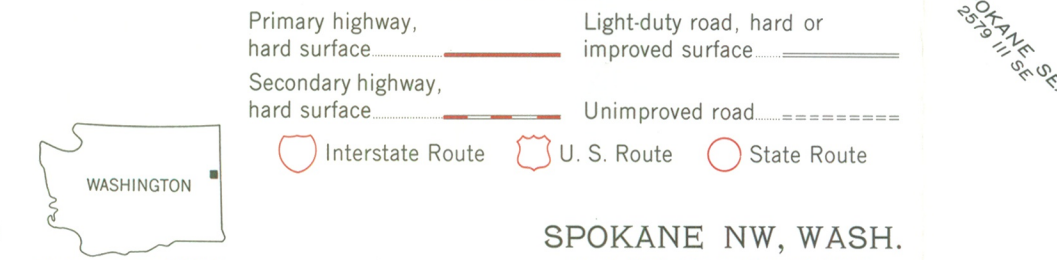
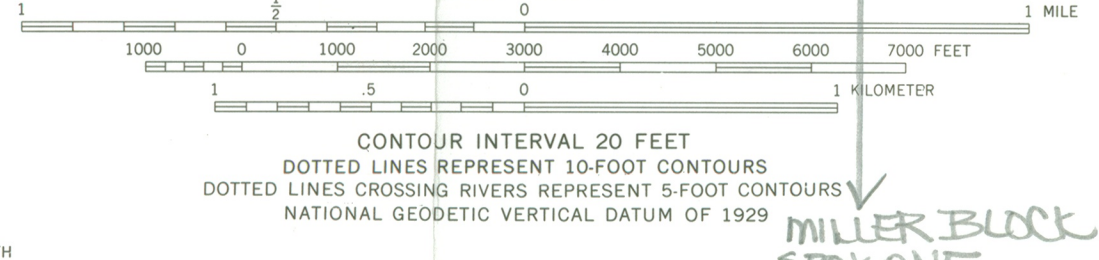
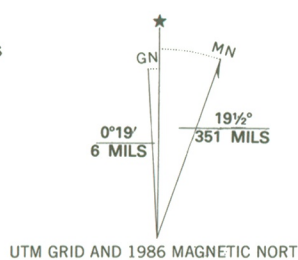
Nomination Form

Photographs (#s: 1-2)

USGS Map



Mapped, edited, and published by the Geological Survey  
Control by USGS and NOS/NOAA  
Topography by photogrammetric methods from aerial photographs taken 1946 and planetable surveys 1950. Revised from aerial photographs taken 1972. Field checked 1974  
Projection and 10,000-foot grid ticks: Washington coordinate system, north zone (Lambert conformal conic)  
1000-meter Universal Transverse Mercator grid ticks, zone 11, shown in blue. 1927 North American datum  
Red tint indicates areas in which only landmark buildings are shown  
To place on the predicted North American Datum 1983, move the projection lines 15 meters north and 79 meters east as shown by dashed corner ticks  
There may be private inholdings within the boundaries of the National or State reservations shown on this map



THIS MAP COMPLIES WITH NATIONAL MAP ACCURACY STANDARDS  
FOR SALE BY U.S. GEOLOGICAL SURVEY, DENVER, COLORADO 80225, OR RESTON, VIRGINIA 22092  
A FOLDER DESCRIBING TOPOGRAPHIC MAPS AND SYMBOLS IS AVAILABLE ON REQUEST

Revisions shown in purple compiled from aerial photographs taken 1982 and other sources  
This information not field checked. Map edited 1986  
Purple tint indicates extension of urban areas

SPOKANE NW, WASH.  
NW/4 SPOKANE 15' QUADRANGLE  
47117-F4-TF-024  
1974  
PHOTOREVISED 1986  
DMA 2579 III NW-SERIES V891

UTM: 11-463250-5278120