

1305

NPS Form 10-900  
(Rev. 8-86)

OMB No. 1024-0018  
**RECEIVED**

United States Department of the Interior  
National Park Service

**OCT 25 1993**  
**NATIONAL REGISTER**

NATIONAL REGISTER OF HISTORIC PLACES  
REGISTRATION FORM

=====

1. Name of Property

=====

historic name: N/A

other name/site number: South Dakota Dept. of Trans. Br. No. 48-244-204

=====

2. Location

=====

street & number: Local Road over the Little White River

not for publication:     

city/town: White River

vicinity: X

state: SD county: Mellette

code: 095

zip code: 57579

=====

3. Classification

=====

Ownership of Property: public-local

Category of Property: structure

Number of Resources within Property:

Contributing	Noncontributing	
_____	_____	buildings
_____	_____	sites
<u>1</u>	_____	structures
_____	_____	objects
<u>1</u>	_____	Total

Number of contributing resources previously listed in the National Register: 0

Name of related multiple property listing: Historic Bridges in South Dakota

4. State/Federal Agency Certification

As the designated authority under the National Historic Preservation Act of 1986, as amended, I hereby certify that this nomination request for determination of eligibility meets the documentation standards for registering properties in the National Register of Historic Places and meets the procedural and professional requirements set forth in 36 CFR Part 60. In my opinion, the property does not meet the National Register Criteria. See continuation sheet.

Signature of certifying official

Date

10/12/92

State or Federal agency and bureau

SO SHPO

In my opinion, the property meets does not meet the National Register criteria. See continuation sheet.

Signature of commenting or other official

Date

State or Federal agency and bureau

5. National Park Service Certification

I, hereby certify that this property is:

entered in the National Register See continuation sheet.

determined eligible for the National Register

See continuation sheet.

determined not eligible for the National Register

removed from the National Register

other (explain):

S McClelland 12/9/93

Signature of Keeper

Date of Action



United States Department of the Interior  
National Park Service

NATIONAL REGISTER OF HISTORIC PLACES  
CONTINUATION SHEET

Section number 7 Bridge No. 48-244-204 Page 6  
=====

Bridge No. 48-244-204 is located 0.5 miles west of White River and carries a local road over the Little White River. The bridge is composed of 18 concrete slabs, each measuring 16 feet in length. The slabs rest on seventeen concrete piers, four square concrete piles each, and two solid concrete abutments with wing walls. The deck is a concrete slab with an asphalt surface. The railing is a concrete balustrade with one panel per span.

The bridge retains excellent integrity.

=====  
8. Statement of Significance  
=====

Certifying official has considered the significance of this property in relation to other properties: \_\_\_\_\_.

Applicable National Register Criteria: C

Criteria Considerations (Exceptions) : \_\_\_\_\_

Areas of Significance: Engineering  
\_\_\_\_\_  
\_\_\_\_\_  
\_\_\_\_\_  
\_\_\_\_\_

Period(s) of Significance: 1936

Significant Dates : 1936 \_\_\_\_\_

Significant Person(s): N/A

Cultural Affiliation: N/A

Architect/Builder: South Dakota State Highway Commission  
\_\_\_\_\_  
\_\_\_\_\_

State significance of property, and justify criteria, criteria considerations, and areas and periods of significance noted above.  
X See continuation sheet.

=====  
9. Major Bibliographical References  
=====

X See continuation sheet.

Previous documentation on file (NPS):

- preliminary determination of individual listing (36 CFR 67) has been requested.
- previously listed in the National Register
- previously determined eligible by the National Register
- designated a National Historic Landmark
- recorded by Historic American Buildings Survey # \_\_\_\_\_
- recorded by Historic American Engineering Record # \_\_\_\_\_

Primary Location of Additional Data:

- State historic preservation office
- Other state agency
- Federal agency
- Local government
- University
- Other -- Specify Repository: South Dakota Department of Transportation

=====  
 10. Geographical Data  
 =====

Acreage of Property: less than 1 acre

UTM References: Zone Easting Northing      Zone Easting Northing

A	<u>14</u>	<u>357820</u>	<u>4825930</u>	B	___	_____	_____
C	___	_____	_____	D	___	_____	_____

\_\_\_ See continuation sheet.

Verbal Boundary Description: \_\_\_ See continuation sheet.

The nominated property consists of a rectangle, 32 feet wide by 319 feet long, whose vertices coincide with the outside corners of the bridge abutments at each end of the bridge, and includes only the bridge superstructure and substructure.

Boundary Justification: \_\_\_ See continuation sheet.

Because the bridge is located on a public road, there are no legal boundary lines for the ends of the bridge. Therefore, these boundaries are drawn to encompass only the superstructure and substructure of the bridge itself.

=====  
 11. Form Prepared By  
 =====

Name/Title: Jennifer Traequer/Historian and Wayne Rosby/Engineer

Organization: Renewable Technologies, Inc.

Date: August 1990/9-93

Street & Number: 510 Metals Bank Bldg.

Telephone: (406)782-0494

City or Town: Butte

State: MT ZIP: 59701

United States Department of the Interior  
National Park Service

NATIONAL REGISTER OF HISTORIC PLACES  
CONTINUATION SHEET

Section number 8 & 9

Bridge No. 48-244-204

Page 7

8. Significance

Bridge no. 48-244-204 is being nominated to the National Register of Historic Places as part of the "Historic Bridges in South Dakota" Multiple Property Nomination. It is related to the historic context of "Historic Bridges in South Dakota, 1893-1943" and is classified with the associated property type for reinforced concrete highway bridges. This bridge is individually eligible for the National Register under Criterion C as the longest concrete slab bridge in total length in South Dakota. The bridge retains excellent integrity.

Bridge No. 48-244-204 was built by the South Dakota State Highway Commission in 1936 for a crossing (formerly SD Highway 44) of the Little White River. Sixteen surviving concrete slab bridges were inventoried in South Dakota. Among them, Bridge No. 48-244-204, measuring 314 feet, is by far the longest. Among the remaining bridges, the next greatest total length is 120 feet.

9. Bibliography

Wayne Rosby, interview with the Mellette County Auditor, 2/28/89, also date is imprinted on piers of bridge.

2897 COTTON COUNTRY  
Mellette

United States Department of the Interior  
National Park Service

National Register of Historic Places  
Continuation Sheet

Historic Bridges in South Dakota MPS  
SOUTH DAKOTA

Section number \_\_\_\_\_ Page \_\_\_\_\_

			Date Listed
93001284	South Dakota Dept. of Transportation Bridge No. 18	-100-052	<i>L. McClelland 12/9/92</i>
93001285	South Dakota Dept. of Transportation Bridge No. 18	-142-150	<i>L. McClelland 12/9/92</i>
93001286	South Dakota Dept. of Transportation Bridge No. 20	-153-210	<i>L. McClelland 12/9/92</i>
93001288	South Dakota Dept. of Transportation Bridge No. 25	-218-141	<i>L. McClelland 12/9/92</i>
93001262	South Dakota Dept. of Transportation Bridge No. 25	-380-142	<i>L. McClelland 12/9/92</i>
93001289	South Dakota Dept. of Transportation Bridge No. 27	-000-201	<i>L. McClelland 12/9/92</i>
93001290	South Dakota Dept. of Transportation Bridge No. 27	-060-298	<i>L. McClelland 12/9/92</i>
93001291	South Dakota Dept. of Transportation Bridge No. 29	-221-060	<i>L. McClelland 12/9/92</i>
93001292	South Dakota Dept. of Transportation Bridge No. 29	-279-010	<i>L. McClelland 12/9/92</i>
93001293	South Dakota Dept. of Transportation Bridge No. 30	-257-400	<i>L. McClelland 12/9/92</i>
93001294	South Dakota Dept. of Transportation Bridge No. 31	-115-110	<i>L. McClelland 12/9/92</i>
93001297	South Dakota Dept. of Transportation Bridge No. 39	-006-070	<i>L. McClelland 12/9/92</i>
93001299	South Dakota Dept. of Transportation Bridge No. 39	-176-100	<i>L. McClelland 12/9/92</i>
93001301	South Dakota Dept. of Transportation Bridge No. 44	-028-220	<i>L. McClelland 12/9/92</i>
93001302	South Dakota Dept. of Transportation Bridge No. 44	-212-090	<i>L. McClelland 12/9/92</i>
93001303	South Dakota Dept. of Transportation Bridge No. 47	-215-363	<i>L. McClelland 12/9/92</i>
93001263	South Dakota Dept. of Transportation Bridge No. 47	-151-389	<i>L. McClelland 12/9/92</i>
93001305	South Dakota Dept. of Transportation Bridge No. 48	-244-204	<i>L. McClelland 12/9/92</i>
93001306	South Dakota Dept. of Transportation Bridge No. 49	-095-190	<i>L. McClelland 12/9/92</i>
93001267	South Dakota Dept. of Transportation Bridge No. 50	-200-035	<i>L. McClelland 12/9/92</i>
93001310	South Dakota Dept. of Transportation Bridge No. 56	-090-096	<i>L. McClelland 12/9/92</i>
93001312	South Dakota Dept. of Transportation Bridge No. 56	-174-090	<i>L. McClelland 12/9/92</i>

United States Department of the Interior  
National Park Service

National Register of Historic Places  
Continuation Sheet

Section number 3 Page 1

SUPPLEMENTARY LISTING RECORD

NRIS Reference Number: see below Date Listed: 12/09/93

Property Name: see below

County: see below State: South Dakota

Historic Bridges in South Dakota MPS  
Multiple Name

-----  
The following properties are listed in the National Register of Historic Places in accordance with the attached nomination documentation subject to the following exceptions, exclusions, or amendments, notwithstanding the National Park Service certification included in the nomination documentation.

*Linda McCullard*  
Signature of the Keeper

December 9, 1993  
Date of Action

-----  
Amended Items in Nomination:

Section 3/8. State Certification/Statement of Significance. Certifying official has considered the significance of the following properties to be of state significance.

Reference No.	Property	County
93001295	Capa Bridge	Jones County
93001287	Chilson Bridge	Fall River County
93001308	Eighth Street Bridge	Minnehaha County
93001298	Esmond Bridge	Kingsbury County
93001317	Hall Bridge	Spink County
93001274	Hay Creek Bridge	Butte County
93001264	Kemp Avenue Bridge	Codington County
93001266	Larson Bridge	Codington County
93001277	Minnesela Bridge	Butte County
93001268	Old Cochrane Bridge	Deuel County
93001281	Red Shirt Bridge	Custer County
93001300	Redwater Bridge, Old	Lawrence County

United States Department of the Interior  
National Park ServiceNational Register of Historic Places  
Continuation SheetSection number 3 Page 2

---

93001269	South Dakota Dept. of Transportation Bridge No. 03-338-100	Beadle County
93001260	South Dakota Dept. of Transportation Bridge No. 03-020-008	Beadle County
93001261	South Dakota Dept. of Transportation Bridge No. 03-327-230	Beadle County
93001270	South Dakota Dept. of Transportation Bridge No. 05-028-200	Bon Homme county
93001271	South Dakota Dept. of Transportation Bridge No. 05-032-170	Bon Homme County
93001272	South Dakota Dept. of Transportation Bridge No. 05-138-080	Bon Homme County
93001273	South Dakota Dept. of Transportation Bridge No. 05-255-130	Bon Homme County
93001276	South Dakota Dept. of Transportation Bridge No. 10-112-355	Butte County
93001275	South Dakota Dept. of Transportation Bridge No. 10-109-360	Butte County
93001278	South Dakota Dept. of Transportation Bridge No. 12-503-230	Charles Mix County
93001265	South Dakota Dept. of Transportation Bridge No. 15-210-136	Codington County
93001279	South Dakota Dept. of Transportation Bridge No. 16-570-054	Carson County
93001280	South Dakota Dept. of Transportation Bridge No. 17-289-107	Custer County
93001282	South Dakota Dept. of Transportation Bridge No. 18-040-137	Davison County
93001283	South Dakota Dept. of Transportation Bridge No. 18-060-202	Davison County
93001284	South Dakota Dept. of Transportation Bridge No. 18-100-052	Davison County
93001285	South Dakota Dept. of Transportation Bridge No. 18-142-150	Davison County
93001286	South Dakota Dept. of Transportation Bridge No. 20-153-210	Deuel County
93001288	South Dakota Dept. of Transportation Bridge No. 25-218-141	Faulk County
93001262	South Dakota Dept. of Transportation Bridge No. 25-380-142	Faulk County
93001289	South Dakota Dept. of Transportation Bridge No. 27-000-201	Gregory County
93001290	South Dakota Dept. of Transportation Bridge No. 27-060-298	Gregory County

United States Department of the Interior  
National Park ServiceNational Register of Historic Places  
Continuation SheetSection number 3 Page 3

93001291	South Dakota Dept. of Transportation Bridge No. 29-221-060	Hamlin County
93001292	South Dakota Dept. of Transportation Bridge No. 29-279-010	Hamlin County
93001293	South Dakota Dept. of Transportation Bridge No. 30-257-400	Hand County
93001294	South Dakota Dept. of Transportation Bridge No. 31-115-110	Hanson County
93001297	South Dakota Dept. of Transportation Bridge No. 39-006-070	Kingsbury County
93001299	South Dakota Dept. of Transportation Bridge No. 39-176-100	Kingsbury County
93001301	South Dakota Dept. of Transportation Bridge No. 44-028-220	McCook County
93001302	South Dakota Dept. of Transportation Bridge No. 44-212-090	McCook County
93001303	South Dakota Dept. of Transportation Bridge No. 47-215-363	Meade County
93001263	South Dakota Dept. of Transportation Bridge No. 47-151-389	Meade County
93001305	South Dakota Dept. of Transportation Bridge No. 48-244-204	Melette County
93001306	South Dakota Dept. of Transportation Bridge No. 49-095-190	Miner County
93001267	South Dakota Dept. of Transportation Bridge No. 50-200-035	Minnehaha County
93001310	South Dakota Dept. of Transportation Bridge No. 56-090-096	Sanborn County
93001312	South Dakota Dept. of Transportation Bridge No. 56-174-090	Sanborn County
93001311	South Dakota Dept. of Transportation Bridge No. 56-117-123	Sanborn County
93001313	South Dakota Dept. of Transportation Bridge No. 58-010-376	Spink County
93001314	South Dakota Dept. of Transportation Bridge No. 58-021-400	Spink County
93001315	South Dakota Dept. of Transportation Bridge No. 58-025-370	Spink County
93001316	South Dakota Dept. of Transportation Bridge No. 58-062-270	Spink County
93001318	South Dakota Dept. of Transportation Bridge No. 58-120-231	Spink County
63001319	South Dakota Dept. of Transportation Bridge No. 58-140-224	Spink County

United States Department of the Interior  
National Park Service

National Register of Historic Places  
Continuation Sheet

Section number 3 Page 4

---

63001320	South Dakota Dept. of Transportation Bridge No. 58-218-360	Spink County
63001321	South Dakota Dept. of Transportation Bridge No. 62-220-512	Tripp County
63001322	South Dakota Dept. of Transportation Bridge No. 64-061-199	Union County
93001309	Split Rock Park Bridge	Minnehaha County
93001304	Stamford Bridge	Miner County
93001307	Summit Avenue Viaduct	Minnehaha County
93001296	Van Metre Bridge	Jones County

---

Section 8: Applicable Criteria

93001266 Larson Bridge Codington County

Criterion C should be checked and not A to be consistent with bridge's significance in engineering for its method of construction.

Section 8: Period of Significance

93001266 Larson Bridge Codington County

Period of significance is amended to read "1917" to indicate date of construction and to be consistent with significance in engineering.

93001281 Red Shirt Bridge Custer County

Period of significance is amended to read "1943-1944" to cover the period of construction.

93001278 South Dakota Dept. of Transportation Bridge No. 12-503-230  
Faulk County

Due to typographical error, period of significance is corrected to read " 1920-1943."

93001265 South Dakota Dept. of Transportation Bridge No. 15-210-136  
Codington County

Period of significance is amended to read "1917" since significance is under criterion C in engineering and the date of construction should be entered.

United States Department of the Interior  
National Park Service

National Register of Historic Places  
Continuation Sheet

Section number 3 Page 5

---

93001262 South Dakota Dept. of Transportation Bridge No. 25-380-  
142 Faulk County

Period of significance is amended to read "1902" because the area of significance is engineering and the period of significance should be based on the date of construction. The bridge was moved from its original site in 1955.

Section 8: Date of Significance

93001308 Eighth Street Bridge Minnehaha County

"1977" is deleted because the date lies outside the period of significance.

93001317 Hall Bridge Spink County

"1904" is deleted because bridge is significant under criterion C for engineering and the move in 1904 falls outside the period of significance which is based on the date of construction and does not appear to have particular importance.

93001286 South Dakota Dept. of Transportation Bridge No. 20-153-  
210 Deuel County

"1960" is deleted because the date lies outside the period of significance.

93001262 South Dakota Dept. of Transportation Bridge No. 25-380-  
142 Faulk County

"1955" is deleted because the date lies outside the period of significance.

93001302 South Dakota Dept. of Transportation Bridge No. 44-212-  
090 McCook County

"1960" is deleted because the date lies outside the period of significance.

**United States Department of the Interior  
National Park Service**

**National Register of Historic Places  
Continuation Sheet**

Section number 3 Page 6

---

93001267 South Dakota Dept. of Transportation Bridge No. 50-200-  
035 Minnehaha County

"1935" is deleted because the date lies outside the period of significance which is based on the date of construction.

93001311 South Dakota Dept. of Transportation Bridge No. 56-117-  
123 Sanborn County

"1905" is deleted because the date lies outside the period of significance and does not appear to have particular importance.

-----

Melissa Dirr, architectural historian, of the South Dakota State Historic Preservation Office was notified of the above-mentioned amendments by telephone on December 09, 1993.

---

**DISTRIBUTION:**

**National Register property file  
Nominating Authority (without nomination attachment)**

UNITED STATES DEPARTMENT OF THE INTERIOR  
NATIONAL PARK SERVICE

NATIONAL REGISTER OF HISTORIC PLACES  
EVALUATION/RETURN SHEET

REQUESTED ACTION: NOMINATION

PROPERTY NAME: South Dakota Dept. of Transportation Bridge No. 48-244-204

MULTIPLE NAME: Historic Bridges in South Dakota MPS

STATE & COUNTY: SOUTH DAKOTA, Mellette

DATE RECEIVED: 10/25/93      DATE OF PENDING LIST: 11/10/93  
DATE OF 16TH DAY: 11/26/93      DATE OF 45TH DAY: 12/09/93  
DATE OF WEEKLY LIST:

REFERENCE NUMBER: 93001305

NOMINATOR: STATE

REASONS FOR REVIEW:

APPEAL: N    DATA PROBLEM: N    LANDSCAPE: N    LESS THAN 50 YEARS: N  
OTHER: N    PDIL: N    PERIOD: N    PROGRAM UNAPPROVED: N  
REQUEST: N    SAMPLE: N    SLR DRAFT: Y    NATIONAL: N

COMMENT WAIVER: N

ACCEPT     RETURN     REJECT    DEC 9 1993 DATE

ABSTRACT/SUMMARY COMMENTS:

*SLR - State level*

RECOM./CRITERIA Accept C  
REVIEWER A. McGeifford  
DISCIPLINE J. Dist  
DATE 12/9/93

DOCUMENTATION see attached comments Y/N see attached SLR Y/N

---

CLASSIFICATION

count       resource type

---

STATE/FEDERAL AGENCY CERTIFICATION

---

FUNCTION

historic       current

---

DESCRIPTION

architectural classification  
 materials  
 descriptive text

---

SIGNIFICANCE

Period      Areas of Significance--Check and justify below

Specific dates      Builder/Architect  
Statement of Significance (in one paragraph)

summary paragraph  
 completeness  
 clarity  
 applicable criteria  
 justification of areas checked  
 relating significance to the resource  
 context  
 relationship of integrity to significance  
 justification of exception  
 other

---

BIBLIOGRAPHY

---

GEOGRAPHICAL DATA

acreage       verbal boundary description  
 UTM's       boundary justification

---

ACCOMPANYING DOCUMENTATION/PRESENTATION

sketch maps       USGS maps       photographs       presentation

---

OTHER COMMENTS

Questions concerning this nomination may be directed to

\_\_\_\_\_ Phone \_\_\_\_\_

Signed \_\_\_\_\_ Date \_\_\_\_\_



SDOT Bridge No. 48-244-204

Vicinity of White River, South Dakota

Wayne Rosby

2/89

Renewable Technologies Inc., Butte, Montana

Partial elevation of west end of bridge to  
north

6/1/207



LES A  
201

SIDOT Bridge No. 48-244-204

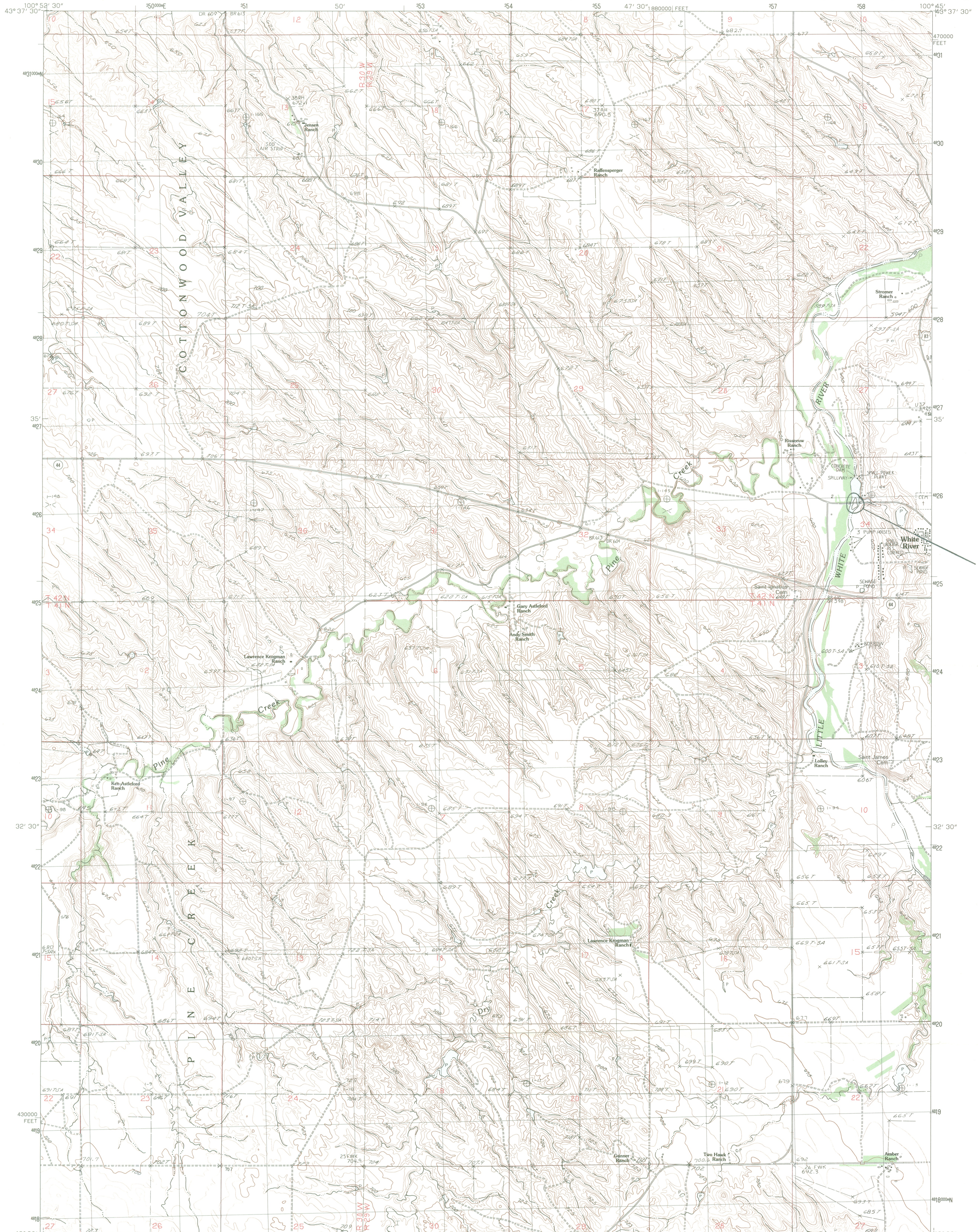
Vicinity of White River, South Dakota

Wayne Rosby

2/89

Renewable Technologies Inc., Butte, Montana

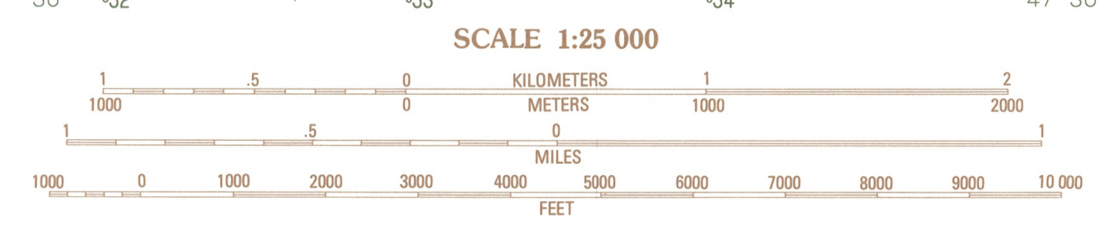
Detail of west abutment to northwest



48-244-204  
UTM  
ZONE 14  
E 357820  
N 4825930

PRODUCED BY THE UNITED STATES GEOLOGICAL SURVEY  
CONTROL BY ..... USGS AND NOS/NOAA  
COMPILED FROM AERIAL PHOTOGRAPHS TAKEN ..... 1974  
FIELD CHECKED ..... 1978. MAP EDITED ..... 1982  
PROJECTION ..... LAMBERT CONFORMAL CONIC  
GRID: 1000-METER UNIVERSAL TRANSVERSE MERCATOR ZONE 14  
10,000-FOOT STATE GRID TICKS ..... SOUTH DAKOTA, SOUTH ZONE  
UTM GRID DECLINATION ..... 1°15' WEST  
1982 MAGNETIC NORTH DECLINATION ..... 18°00' EAST  
VERTICAL DATUM ..... NATIONAL GEODETIC VERTICAL DATUM OF 1929  
HORIZONTAL DATUM ..... 1927 NORTH AMERICAN DATUM  
To place on the predicted North American Datum of 1983  
move the projection lines as shown by dashed corner ticks  
(6 meters north and 36 meters east)

**PROVISIONAL MAP**  
Produced from original  
manuscript drawings. Infor-  
mation shown as of date of  
field check.



**ROAD LEGEND**  
Improved Road .....  
Unimproved Road .....  
Trail .....  
Interstate Route ..... U.S. Route ..... State Route .....

CONTOUR INTERVAL 5 METERS  
CONTROL ELEVATIONS SHOWN TO THE NEAREST 0.1 METER  
OTHER ELEVATIONS SHOWN TO THE NEAREST METER  
To convert meters to feet multiply by 3.2808  
To convert feet to meters multiply by .3048  
THIS MAP COMPLIES WITH NATIONAL MAP ACCURACY STANDARDS  
FOR SALE BY U. S. GEOLOGICAL SURVEY, DENVER, COLORADO 80225  
OR RESTON, VIRGINIA 22092

1	2	3	1 Murdo 3 NW
			2 Murdo 3 NE
			3 Westover
4		5	4 Murdo 3 SW
			5 White River East
			6 Soldier Creek NE
6	7	8	7 Soldier Creek NE
			8 Mission NW

ADJOINING 7.5' QUADRANGLE NAMES  
CONTOURS AND ELEVATIONS  
IN METERS

**WHITE RIVER WEST, SOUTH DAKOTA**  
PROVISIONAL EDITION 1982  
43100-E7-TM-025