

UNITED STATES DEPARTMENT OF THE INTERIOR
Heritage Conservation and Recreation Service

NATIONAL REGISTER OF HISTORIC PLACES INVENTORY
NOMINATION FORM

Continuation Sheet

Item Number

Page

Name Historic: Batesburg Commercial
Historic District
Common

Location: Along portions of Granite Street,
Oak Street, Rutland Avenue and Pine
Street between Church Street and (cont)
Classification: N. Railroad Ave.
District

Owner: Multiple ownership (see
continuation sheet)

Representation in Existing Surveys

Inventory of Historic Places in South Carolina

Description Encompassing thirty-one properties within a three block area, the Batesburg Commercial Historic District is a highly intact collection of commercial buildings constructed between 1895 and 1925, with the majority from the 1900-1910 decade. The district's turn of the century character is accentuated by the largest collection of cast iron facade ornamentation found in the Central Midlands Region. Thirteen facades retain original cast iron pilasters or columns. Decorative brick trim also embellishes a number of the storefronts, further articulating the period setting. Four buildings are built of early concrete blocks, molded to imitate stone. The commercial district has had minimal modern building and retains the scale and feeling of the ca. 1925 community.

Significance ; The Batesburg Commercial Historic District is significant as an intact commercial center, showing the scale, materials, and development patterns of an early twentieth century railroad town. The preponderance of cast iron ornamentation is noteworthy, with the Highlander Outlet, Dodd's and Roof's Hardware having exceptional ironwork. The cast iron columns that ornament many storefronts have capitals that are variants of classical Composite capitals, with several different interpretations. Four buildings utilize early concrete block, molded to represent stone. The commercial district evolved as a banking and trade center for parts of Saluda, Aiken, Edgefield, and Lexington counties following the arrival of the railroad to Batesburg in 1869. Period commercial concerns are represented by the Rutland Carriage Works, the Rutland Stables (now Altman's Auto (cont.))
Acreage 5.4 acres

Verbal Boundary Description

The boundary of the Batesburg Commercial Historic District nomination is shown as a red line on the accompanying Lexington County Tax Map number 07021, drawn to a scale of 100 feet to the inch.

UTM Reference Point

A. 17/449345/3751850 B. 17/449405/3751720 C. 17/449200/3751760 D. 17/449150/3751760

Other Information

Location: North Railroad Avenue in Batesburg.

Significance: Parts), the former L.D. Cullum Buggy and Wagon Company, and the Isaac Edwards, Undertaking. The declining local economic outlook has contributed to the relative absence of contemporary construction. The district retains integrity as of ca. 1925.

**United States Department of the Interior
Heritage Conservation and Recreation Service**

**National Register of Historic Places
Inventory—Nomination Form**

For HCRS use only

received

date entered

Continuation sheet

Item number

Page

C.A. Asbill & C.R. Roof
% Asbill & Roof Hardware Shop
Batesburg, South Carolina

Inman Smith
2 Peachtree Street
Batesburg, South Carolina

Newell C. Ridgell
Peachtree Street
Batesburg, South Carolina

Sarah Ridgell Nicholson
210 Faircloth Street
Raleigh, North Carolina

Globe Finance
11 Granite Street
Batesburg, South Carolina

Elizabeth B. Fulmer
Terrace Way Road
Leesville, South Carolina

City of Batesburg
Batesburg, South Carolina

A&T Sales
Box 4235
Columbia, South Carolina 29240

**United States Department of the Interior
Heritage Conservation and Recreation Service**

**National Register of Historic Places
Inventory—Nomination Form**

For HCRS use only
received
date entered

Continuation sheet

Item number

Page

Kenneth & Donald Fox
Pine Street
Batesburg, South Carolina

James P. Draft, Jr.
204 Bates Street
Batesburg, South Carolina

John Parler, Jr.
Box 106
Batesburg, South Carolina

Lowell E. Altman
Saluda Avenue
Batesburg, South Carolina

Robert Owen
Batesburg, South Carolina

O.E. Hartley, et al.
11 W. Hartley Street
Batesburg, South Carolina

Katharine S. Smith & Martha Keller
Box 218
Allendale, South Carolina 29810

Fox's Denim Den
Oak Street
Batesburg, South Carolina

C.E. Durst & P.M. Jones
Jones Jewelry
Oak Street
Batesburg, South Carolina

Julius Garber, et al.
Box 30
Batesburg, South Carolina

Clarence L. Collum
Box 205
Batesburg, South Carolina

Cato's
Ronald Allen Carter
4050 Friends Lane
Plymouth Meeting, Pennsylvania 19104

Jessie M. Wesberry Boatwright
RFD, Box 61
Islamorda, Florida 33036

Jo ann K. Kennedy
Box 227
Batesburg, South Carolina

Wallace T. Trent & S. Swanza
514 Saluda Avenue
Box 255
Batesburg, South Carolina

Harold Shealy
Fair Avenue
Batesburg, South Carolina

Dr. W. Wyman
Box 128
Batesburg, South Carolina

Arthur S. Jones, Jr.
Box 215
Batesburg, South Carolina

Belk Department Store
20 Oak Street
Batesburg, South Carolina

Dr. W.W. King
Box 128
Batesburg, South Carolina

Rose C. Dreher
Box 264
Batesburg, South Carolina

Mary Girese, et al.
Oak Street
Batesburg, South Carolina

Automated Industrial Electronics, Inc.
101 Blanding Street
Batesburg, South Carolina

Wise TV & Appliance
Sylvia Whitney
6 N. Peachtree Street
Batesburg, South Carolina

**United States Department of the Interior
Heritage Conservation and Recreation Service**

**National Register of Historic Places
Inventory—Nomination Form**

For HCRS use only

received

date entered

Continuation sheet

Item number

Page

Buildings pivotal to the district's character:

B-3. Isaac Edwards's General Store, corner of Granite and Lexington Streets. This two story masonry building was constructed in 1904. The white-painted facade features a central, second floor oriel, and a corbeled brick cornice with brackets and a paneled parapet. Imitation granite blocks comprise the four piers carrying the facade on the first floor. Similar blocks are set at intervals along the corners of the upper facade, and in the central oriel.

B-4. Isaac Edwards, Undertaking, Granite Street. Constructed in 1906, this two story, rectangular building was built as an extension to the 1904 general merchandise store. This building was operated as an undertaking establishment by merchant Isaac Edwards. The building features a parapet roofline, and a facade of imitation stone blocks. Imitation-stone pillars divide the upper facade into three segments, and extend above the roofline. Modillion blocks articulate the cornice. Above the display windows and the double front door is a modern lapped horizontal metal covering.

B-14. Giresi's Interiors (Batesburg Drug Store), Oak Street. This two story brick building was constructed as the Batesburg Drug Store by O. J. Harris, ca. 1900. The building is painted white, and features a decorative brick cornice above three square vents. Two single windows flank a single central door on the second floor. Both door and windows have raised segmental arched heads. A balcony accessible from this upper door has been removed. The lower facade has two doors flanking a projecting glass display window, which is fronted by two cast iron columns with composite capitals.

B-15. Dodd's (Dreher's Grocery), Oak Street. Constructed in 1904, this brick building is one story, rectangular, and features a corbeled cornice and brick bracket series above a recessed sign panel on the upper facade. Twin freestanding cast iron columns with volute capitals flank the double front door. Angled display windows are encased in molded wood frames, and surmounted by a full width transom of five panes.

B-19. Roof's Hardware/Trowell Records, Oak Street. This ca. 1908 brick building traverses the city block, with one elevation on Oak Street and a second elevation on Granite Street. Three freestanding cast iron columns with composite capitals center the Oak Street facade. Square transom lights surmount the glass display windows of the two businesses housed in the building. The three columns are repeated on the Granite Street elevation.

B-20. Bank of Western Carolina, corner of Granite Street and Railroad Avenue. This one story brick building was constructed ca. 1915 as the Western Carolina Bank. The building has a hip roof sheathed in red tile, with heavy wooden brackets embellishing the roof eaves. Flat brick arches with projecting keystones surmount transomed one-over-one windows along both exposed elevations, with doors on both elevations being surmounted by semicircular arches. Both doors are sheltered by cast iron marquees, suspended from chains.

**United States Department of the Interior
Heritage Conservation and Recreation Service**

**National Register of Historic Places
Inventory—Nomination Form**

For HCRS use only

received

date entered

Continuation sheet

Item number

Page

B-27. Highlander Outlet, Oak Street. Constructed ca. 1900, this one story rectangular building is of painted brick, with an elaborate cast iron Italianate cornice. Engaged cast iron columns on incised pedestals adorn the lower facade. Above the plate glass display windows, a transom series of three two-pane lights is placed, with two cast iron vertical spacers. A corbeled brick cornice is topped by the cast iron cornice, which consists of ten brackets interspersed with pierced iron panels, topped by an iron fascia.

B-34. Old First National Bank, corner of Oak Street and Railroad Avenue. This yellow brick Neoclassical building was constructed ca. 1908. It is two stories, and rectangular in plan. Four brick pilasters, with concrete capitals and a heavy entablature characterize the Oak Street elevation. The entablature is carried across the Railroad Avenue elevation with brick pilasters framing two projecting pavilions. The rear of the building is red brick.

B-38. Altman's Auto Parts (Rutland's Stables), Railroad Avenue. Constructed in 1905 by M. E. Rutland, this rectangular one story building is of white-painted brick, with a low roof parapet. A corbeled brick cornice enriches the parapet. Two large segmentally arched openings describe the lower facade; these were apparently large double doors. The openings are now filled by glass display windows, with double doors.

B-39. J. L. Cato Grocery (Rutland Carriage Company), Railroad Avenue. Constructed in 1905 as the carriage works of M. E. Rutland, this two story building is of white-painted brick, and features a roof parapet with a decorative brick cornice, and cast iron pilasters framing the central entrance. Two six-over-six windows beneath segmental arches flank a single arched doorway on the second floor. The original balcony has been removed. The original "Carriages" sign of black iron letters centers the parapet.

B-40. Owen Drug Company (Old Post Office), Railroad Avenue and Pine Street. This two story brick building, constructed ca. 1907, has a facade of early concrete block imprinted to resemble rusticated granite. Three triple sash windows pierce the upper facade, under a stepped parapet. A modern metal awning covers the modern glass display windows.

Other buildings contributing to the historic character of the district:

B-1. U. X. Gunter General Merchandise, Church and Granite Street. Built in 1905 by U. X. Gunter, this one story brick building features three enframed panels on its upper facade, with a series of corbeled brackets supporting the cornice. A course of diagonally laid soldiers embellishes the facade. A single pane transom surmounts the recessed entrance. U. X. Gunter was one of Batesburg's first merchants, opening a store in 1869. He was also a co-organizer of the Citizen's Bank.

B-2. Old Batesburg City Hall, Granite Street. This two story brick building was constructed ca. 1906 as the Citizen's Bank Building. The building features a first floor brick arcade, with the entrance diagonally recessed behind the corner pier of this arcade. Full length brick pilasters divide the upper elevations into bays, with segmentally arched one-over-one windows on the second floor. Fanlights surmount the first floor doors and windows, which are behind the arcade.

**United States Department of the Interior
Heritage Conservation and Recreation Service**

**National Register of Historic Places
Inventory—Nomination Form**

For HCERS use only

received

date entered

Continuation sheet

Item number

Page

B-7. Old Telephone Company Building, Granite Street. This ca. 1910 two story brick building, now vacant, was called the telephone company because the town's first phone equipment was housed on the second floor. The building's first floor is painted white, up to a beltcourse, which separates the two floors. The door and the windows have segmentally arched brick hoods.

B-8. Swim and Sun Manufacturing Co. (L. D. Cullum Buggy and Wagon Co.); Granite Street. Built ca. 1912, this two story brick building features a series of cast iron columns on the first floor, supporting the upper facade. Three windows on the second floor have segmental brick arches. The windows on the first and second floor have been painted or boarded up, but the openings and the fenestration pattern remain.

B-9. M. Howard Butcher Shop, corner of Railroad Avenue and Granite Street. This ca. 1905 brick building is one story, painted white, with a flat roof. The cornice features mouse tooth brickwork above two recessed panels. Three cast iron columns ornament the lower facade.

B-10. Shealy Furniture (Kaminer Building), corner of Oak and Church Streets. Built in 1901, this two story brick building has a lower facade graced by six fluted cast iron columns and two end pilasters, framing the five display windows and two entrances. Four windows and one central door are on the second story. The original second floor balcony has been removed. A brick cornice, with a central disc bearing the date, "1901", crowns the facade. Brick quoins enframe the second floor facade. This building, during the early part of the century, housed variety shows on its second floor, and was known as the Batesburg Opera House.

B-11. Village Aire (J. B. Stokes Hardware Store), Oak Street. This ca. 1925 one story brick building has paired brick pilasters framing the facade. A central glass doorway is surmounted by a flat concrete lintel, supported by consoles, and by a semicircular brick arch.

B-12. Belk (Whitlaw's Dry Goods), Oak Street. This building, constructed ca. 1910, has two units: a two story unit to the south, and a one story unit to the north. The brick facades of both units are painted white. The building traverses the block, with a subsidiary elevation on Granite Street. Although modern plate glass windows and marquees have been added, both units retain their original cast iron columns.

B-16. Automated Industrial Electronics, Granite Street. This one story brick building was constructed ca. 1912. The facade is divided by a central brick pier into two display areas. A corbelled brick cornice surmounts the two recessed panels of the upper facade.

B-17. Marvin Aull Fashion Shop/Batesburg Fabric, Oak Street. Constructed ca. 1908, this double store building is one story, with a white-painted brick facade. Plate glass angled display windows flank the central double doors in each half of the building. A series of corbeled brick brackets crowns the facade.

**United States Department of the Interior
Heritage Conservation and Recreation Service**

**National Register of Historic Places
Inventory—Nomination Form**

For HCRS use only

received

date entered

Continuation sheet

Item number

Page

B-18. Wise T. V. and Appliance, Granite Street. Constructed ca. 1910, this two story rectangular building traverses the block, with a second elevation on Oak Street. Fluted cast iron columns with composite capitals enframe the entrances. The Oak Street facade has a pedimented parapet, while the Granite Street facade has a stepped parapet.

B-22. Fair Drug Company, corner of Oak Street and Railroad Avenue. Constructed ca. 1920, this two story brick building has an angled entrance recessed behind the Oak Street elevation. The second floor windows feature flat brick arches. A brick cornice with paneled projections terminates the building.

B-23. Fox's Denim Den, Oak Street. This one story brick building was built ca. 1920. The building has the original wood framed display windows and double doors. The only ornamentation is a simple brick cornice.

B-28. Margee's, Oak Street. This one story building of painted brick was built ca. 1900. It features a corbeled cornice above two rows of recessed brick panels--three across. Modern glass and metal framed doors center the facade, but the original cast iron pilasters enframing the entranceway remain.

B-29. Cato's, Oak Street. This ca. 1900 building is of one story, brick, painted white. A corbeled cornice on the facade is its only ornamentation. The lower facade is modern, with a new metal marquee.

B-30. Collins Jewelry/Vogue Beauty Salon, Oak Street. This ca. 1900 building is a one story brick establishment, painted white. The building is identical to the buildings immediately north and south along Oak Street, which were built at the same time. Modern tile covers the exterior beneath the display windows.

B-31. Rollins Optometry/Batesburg Jewelry, Oak Street. This is the southernmost of three identical buildings constructed ca. 1900. The roof parapet and brick corbeled cornice is carried through all three buildings.

B-33. Mae's Dress Shop, Oak Street. Constructed ca. 1905, this one story brick building has a tall banded parapet, a circular vent with a projecting keystone, and a recessed brick panel in its facade. A modern display area, with a metal canopy, occupies the lower facade.

B-36. M. E. Rutland Building, Pine Street. Constructed in 1924 by M. E. Rutland, this building is part of the complex of stores built by this prominent Batesburg businessman between 1904 and 1920 on the block bounded by Church, Pine, and Oak streets, and Railroad Avenue. The rectangular two story building is of brick, with concrete lintels over the twelve windows of the second floor. Six large warehouse doors pierce the first floor.

**United States Department of the Interior
Heritage Conservation and Recreation Service**

**National Register of Historic Places
Inventory—Nomination Form**

For HCRS use only

received

date entered

Continuation sheet

Item number

Page

B-37. R. B. Nichols, Wholesale Grocer (Batesburg Bottling Company), Pine Street. This two story building was erected in 1908. The facade is of imitation-stone block. The two windows of the upper facade are surrounded by plain concrete block, while the first floor has a central warehouse door and two windows. The building was used as the Batesburg Bottling Company from 1947 to 1968.

Noncontributing buildings in the district:

B-5. Fulmer Hardware, Granite Street. This one story building, built ca. 1903, has been completely remodeled with a new brick upper facade and new plate glass display windows.

B-6. Animal World/Globe Finance (L. D. Cullum's Furniture Store), Granite Street. This one story brick building is dominated by a new metal awning, which spans the breadth of the facade. A simple brick cornice is the only ornamentation.

B-13. Moore's Department Store, Oak Street. This ca. 1900 two story building has been completely modernized with a corrugated aluminum upper facade and a metal marquee.

B-21. City Shoe Shop, Railroad Avenue. This ca. 1930 brick building is one story, with a central entrance and flanking plate glass windows.

B-24. Jones Jewelry, Oak Street. This one story brick building was built ca. 1950. A modern metal marquee covers the modern double glass doorway and display windows.

B-25. Garber's (Old First National Bank), Oak Street. This building, built in 1900, has been modernized with a multi-colored corrugated aluminum upper facade and new glass doors and display windows.

B-26. Barb's Boutique, Oak Street. This one story contemporary building is faced with tile, and has double glass doors and display windows beneath a metal canopy.

B-32. Kennedy's, Oak Street. This ca. 1908 one story brick building has been redressed with corrugated aluminum and large pane "Williamsburg" display windows.

B-35. Fox's Liquor Store, Pine Street. This 1915 one story brick building has been covered with modern tile and has a new plate glass display window.

United States Department of the Interior
National Park Service

National Register of Historic Places
Inventory—Nomination Form

For NPS use only

received

date entered

Continuation sheet

Item number

Page 2 of 3

Multiple Resource Area
Thematic Group

Name Batesburg-Leesville Multiple Resource Area
State South Carolina

Nomination/Type of Review

Date/Signature

11. Mitchell, Crowell, House

Entered in the
National Register

Keeper

Delores Byers 7/6/82

Attest

12. Mitchell-Shealy House

Entered in the
National Register

Keeper

Delores Byers 7/6/82

Attest

13. Batesburg Commercial Historic District

Substantive Review

Keeper

W.H. Brauman 7-6-82

Attest

Duhie 6/29/82

14. Rawl, John Jacob, House

Entered in the
National Register

Keeper

Delores Byers 7/6/82

Attest

15. Hendrix, Henry Franklin, House

Entered in the
National Register

Keeper

Delores Byers 7/6/82

Attest

16. Church Street Historic District

Entered in the
National Register

Keeper

Delores Byers 7/6/82

Attest

17. Holman, J. B., House

Entered in the
National Register

Keeper

Delores Byers 7/6/82

Attest

18. Edwards, Broadus, House

Substantive Review

Keeper

W.H. Brauman 7-6-82

Attest

Duhie 6/29/82

19. Leesville College Historic District

Entered in the
National Register

Keeper

Delores Byers 7/6/82

Attest

20. Old Batesburg-Leesville High School

Substantive Review

Keeper

W.H. Brauman 7-6-82

Attest

Duhie 7/6/82

Copy
adj.

NATIONAL REGISTER OF HISTORIC PLACES

United States Department of the Interior
National Park Service

Substantive Review

EVALUATION / RETURN SHEET (Batesburg - Leesville MRA) 82003875

Property: Batesburg Commercial Historic District
State, County: SC, Lexington
Federal Agency: _____

Working No. 5626/82-1520
Fed. Reg. Date: 2.1.83
Date Due: 6-25-82 / 7-10-82
Action: ACCEPT 7/6/82
 RETURN _____
 REJECT _____

- resubmission
- nomination by person or local government
- owner objection
- appeal

photos _____
maps _____

Substantive Review: sample request appeal NR decision

Reviewer's comments: District reflecting turn of the century growth of Batesburg - 9 of 35 don't contribute - several covered facades that suggest rehab potential - others are not intrusive. Vistas suggest boundary might have included I Street.

Recom. / Criteria ACCEPT A,C
Reviewer DUBIE
Discipline HIST
Date 6/29/82
_____ see continuation sheet

Nomination returned for: _____ technical corrections cited below
_____ substantive reasons discussed below

1. Name

2. Location

3. Classification

Category	Ownership	Status	Present Use
	Public Acquisition	Accessible	

4. Owner of Property

5. Location of Legal Description

6. Representation in Existing Surveys

has this property been determined eligible? yes no

7. Description

Condition	Check one	Check one
<input type="checkbox"/> excellent	<input type="checkbox"/> deteriorated	<input type="checkbox"/> unaltered
<input type="checkbox"/> good	<input type="checkbox"/> ruins	<input type="checkbox"/> altered
<input type="checkbox"/> fair	<input type="checkbox"/> unexposed	<input type="checkbox"/> original site
		<input type="checkbox"/> moved date _____

Locations not - 9 of 35 not contributing on map.
- 7 altered older buldys
- 2 more recent

Describe the present and original (if known) physical appearance

- summary paragraph Very good summary
- completeness
- clarity
- alterations/integrity
- dates
- boundary selection choice is not really explained

for NPS use only

8. Significance

Period _____ Areas of Significance—Check and justify below

Specific dates _____ Builder/Architect _____

Statement of Significance (in one paragraph)

defines period of significance!

- summary paragraph
- completeness
- clarity
- applicable criteria *A, C*
- justification of areas checked
- relating significance to the resource
- context
- relationship of integrity to significance
- NA* justification of exception
- other

9. Major Bibliographical References

10. Geographical Data

Acres of nominated property _____

Quadrangle name _____

USMT References _____

Verbal boundary description and justification _____

11. Form Prepared By

12. State Historic Preservation Officer Certification

The evaluated significance of this property within the state is:

_____ national _____ state _____ local

State Historic Preservation Officer signature _____

title _____ date _____

13. Other

- Maps *non contributing buildings not indicated on map*
- Photographs *excellent photos.*
- Other

Questions concerning this nomination may be directed to _____

Signed _____ Date _____ Phone: 202 272 - 3504

Comments for any item may be continued on an attached sheet



1906







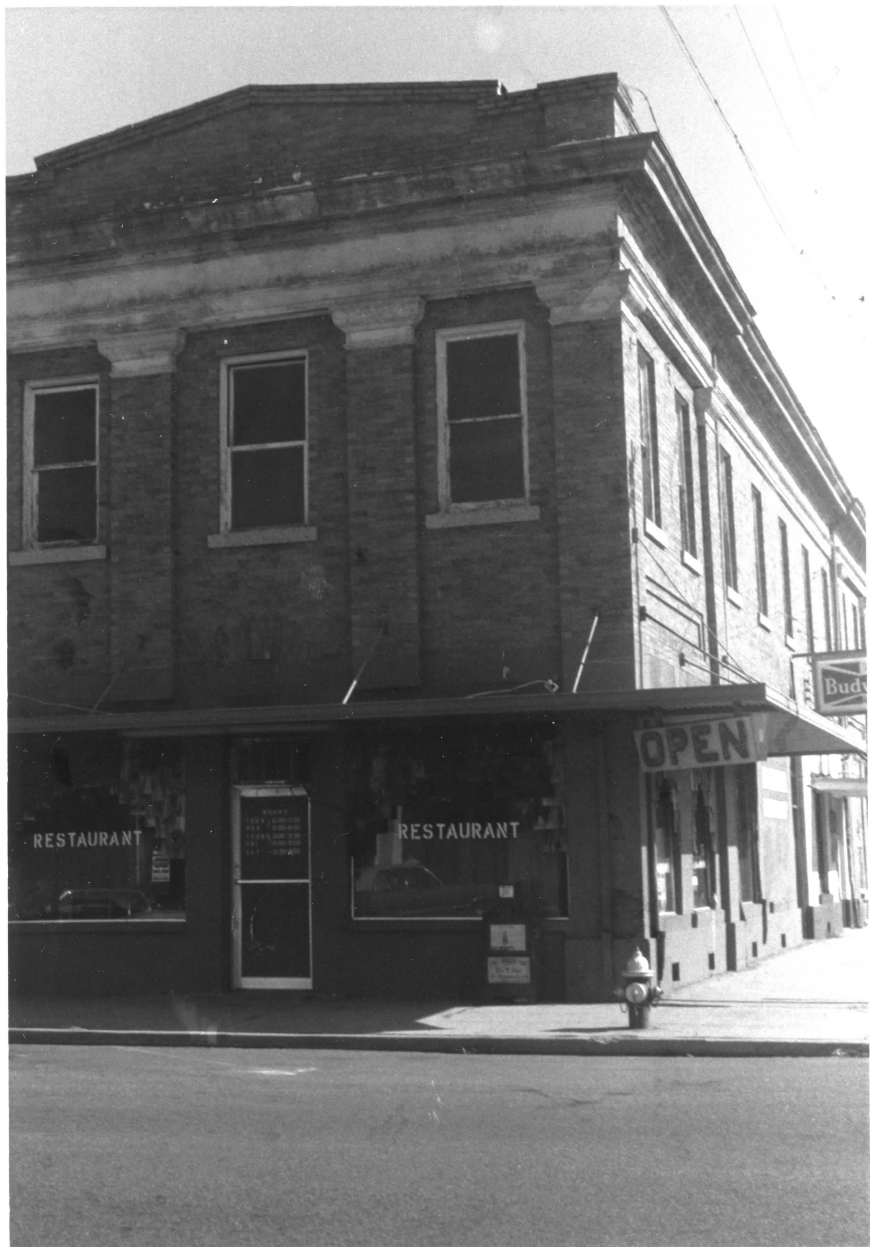






HIGHLANDER OUTLET *St. Louis Original*

Mar



RESTAURANT

RESTAURANT

OPEN

Bud



CARRIAGES



M. L. GATO
GENERAL MERCHANDISE



BARBER SHOP

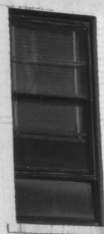
OPEN

GROcery

HOT PEANUTS



Owen Drug Co.
Rx PRESCRIPTIONS Rx

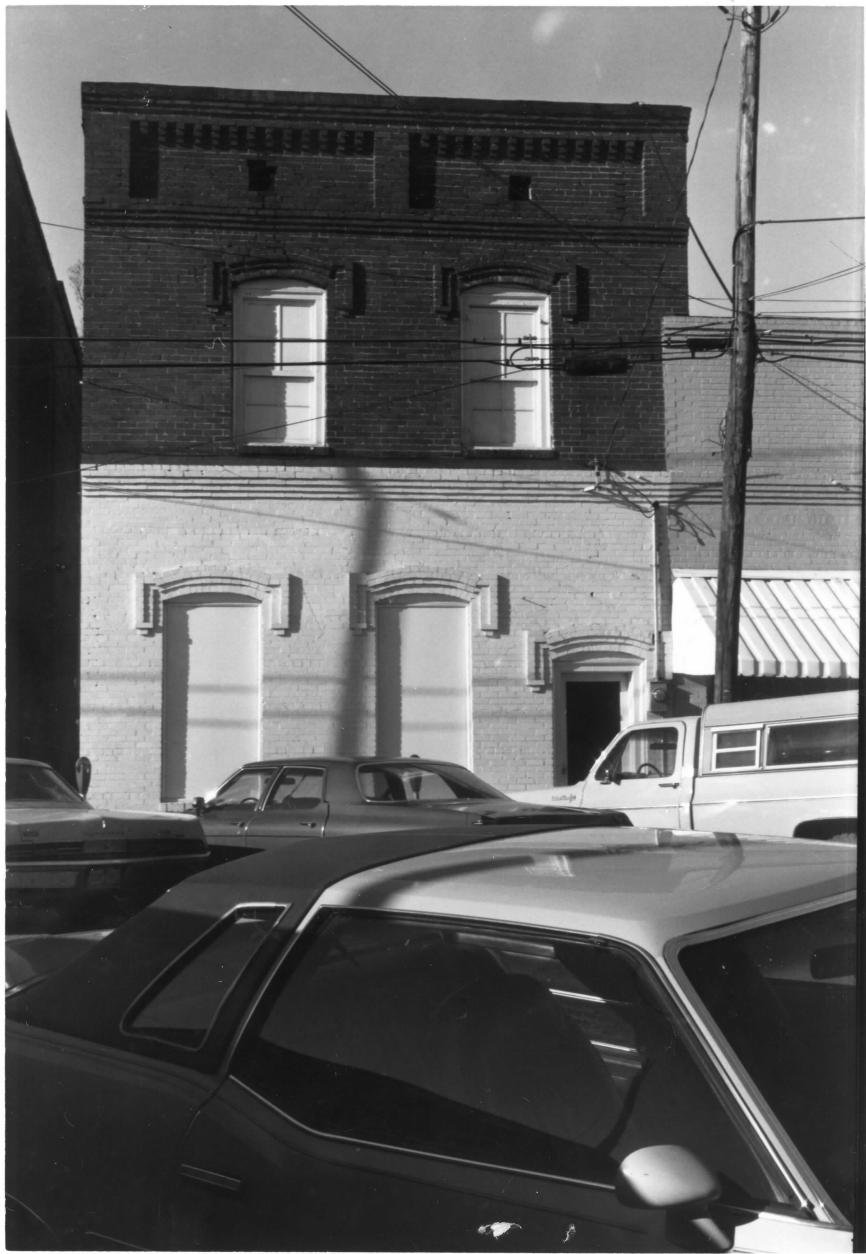


FREE FILM
WITH OUR SERVICE
NO REVENUE
EXTRA CHARGE











SWIM & SUN MFG. CO.
BATESBURG, S.C.



1901

SHEALY FURNITURE CO.





Belk

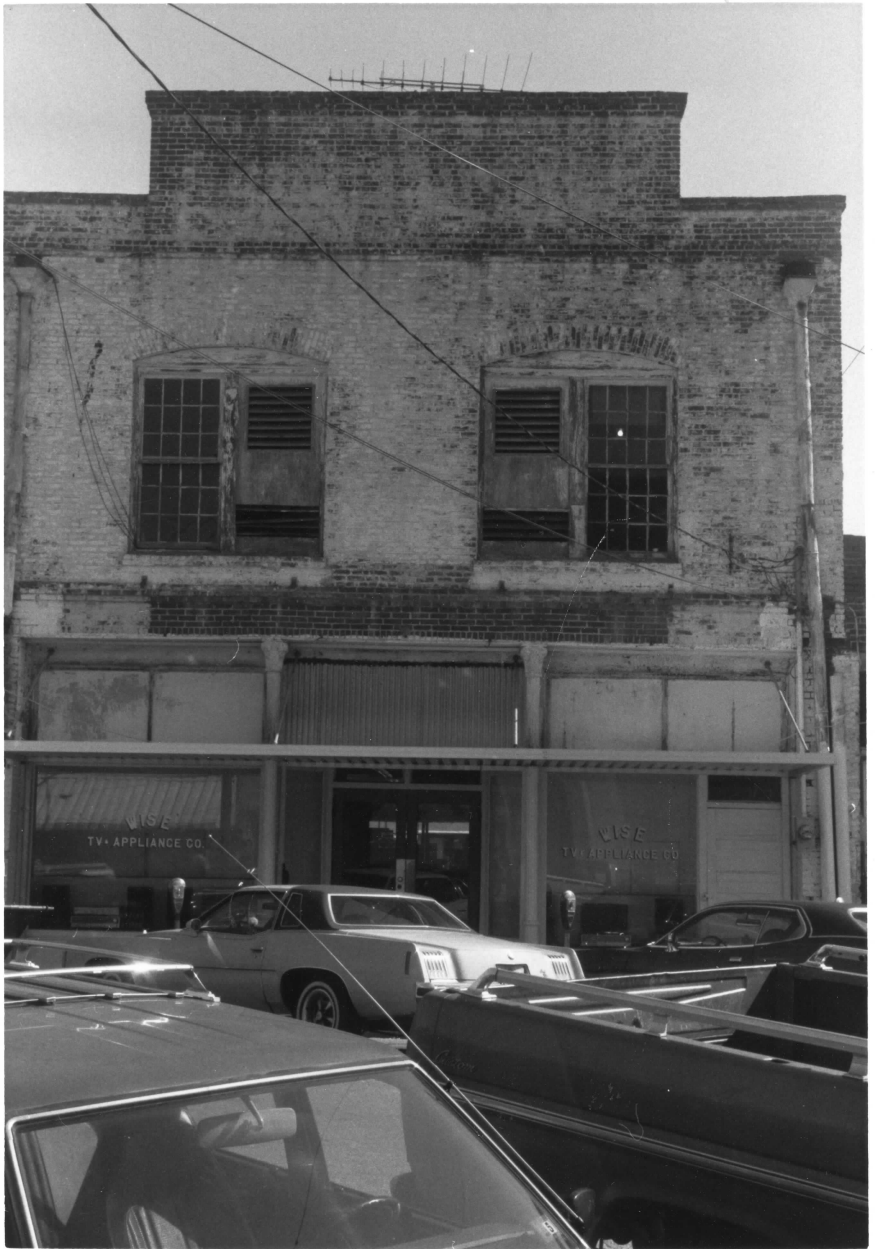




AUTOMATED INDUSTRIAL
ELECTRONICS CORP.
MEASUREMENTS
DIVISION

TOWN OF
BATEBURG
SANITATION
DEPT.













SALE

SWETERS & KNIT TOPS
\$5 - \$10 - \$12

Collins
Jewelry



VOGUE BEAUTY SALON

VOGUE
BEAUTY SALON

TOPS
\$12

NEW

NEW

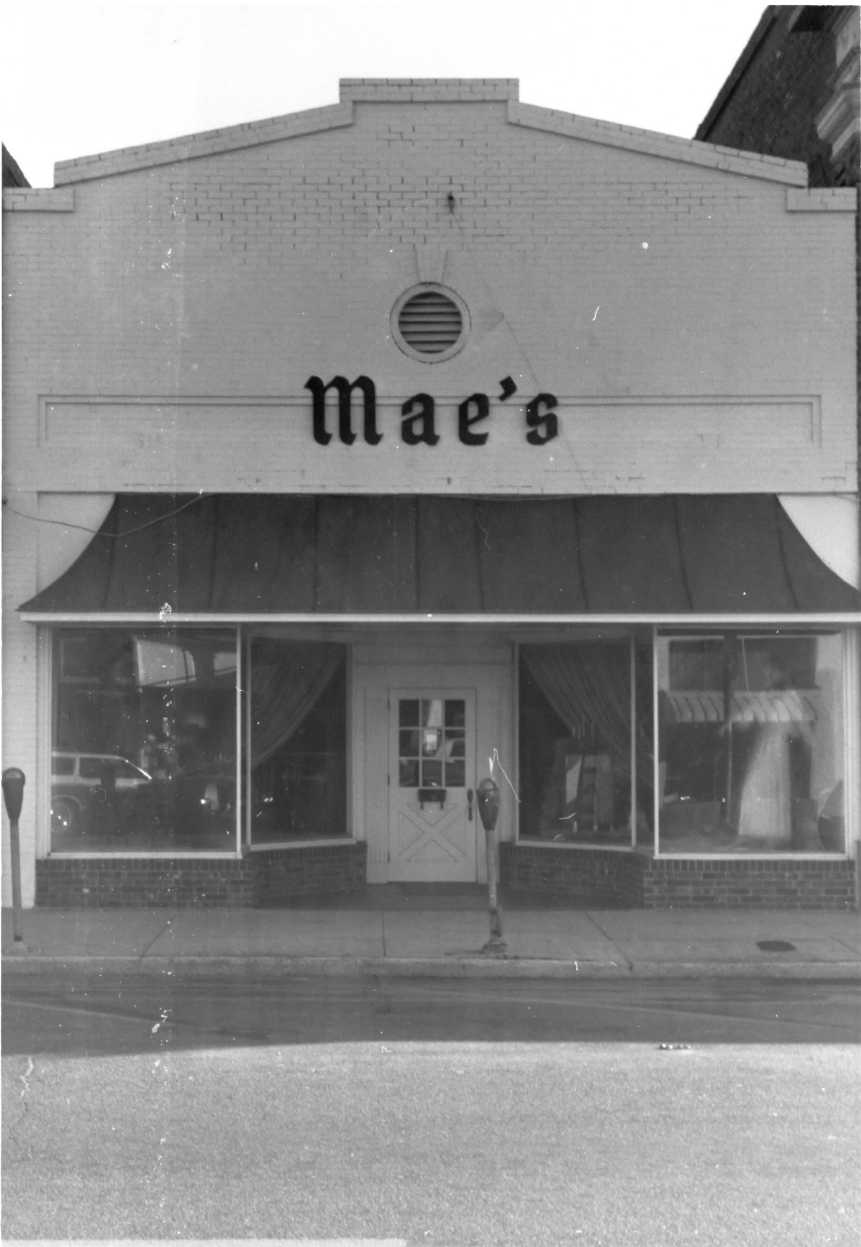
SALON

JEWELRY

D. R. COLLINGS
OPTOMETRIST

Kennedy's





Mae's





R.B. NICHOLS
WHOLESALE
GROCER

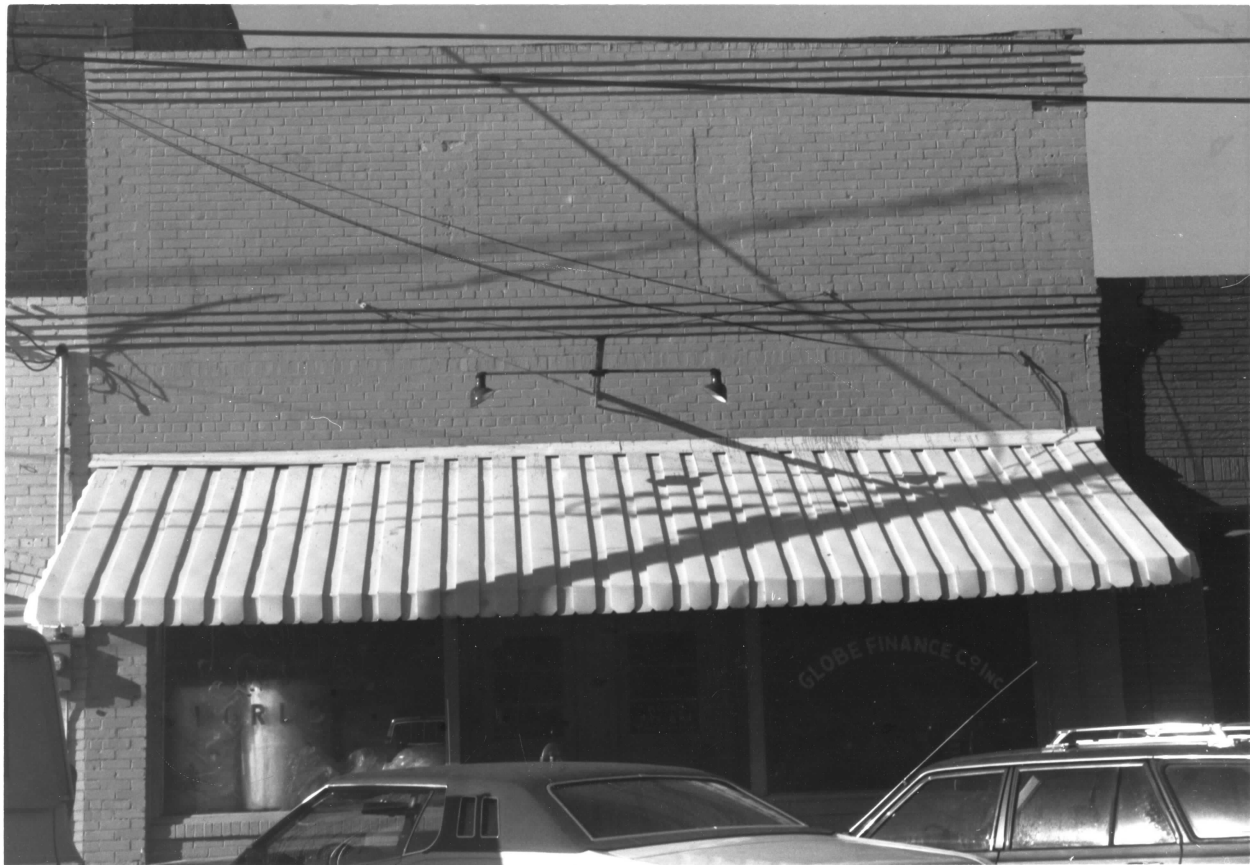
MILWAUKEE AND



D
DEVOE
PAINT

FULMER HARDWARE CO.

D
DEVOE
PAINT











A black and white photograph of a commercial building. The upper portion of the building features a sign that reads "GARBER'S" in large, bold, sans-serif capital letters. The sign is mounted on a wall with vertical corrugated siding. Below the sign, there are several dark vertical panels. The lower portion of the building has a long, low profile with a series of large glass windows and a central set of glass doors. The windows display mannequins dressed in clothing. The foreground shows a dark, flat surface, likely a sidewalk or street. In the top left corner, there is a small, bright, out-of-focus object, possibly a light or a decorative element.

GARBER'S

Barb's
BOUTIQUE

HIGHLAN











Please refer to the map in the
Multiple Property Cover Sheet
for this property

Multiple Property Cover Sheet Reference Number: 64000761