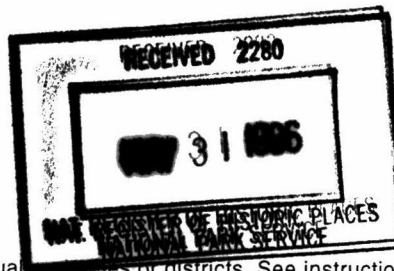


United States Department of the Interior National Park Service National Register of Historic Places Registration Form



This form is for use in nominating or requesting determinations of eligibility for individual properties or districts. See instructions in *Guidelines for Completing National Register Forms* (National Register Bulletin 16). Complete each item by marking "x" in the appropriate box or by entering the requested information. If an item does not apply to the property being documented, enter "N/A" for "not applicable." For functions, styles, materials, and areas of significance, enter only the categories and subcategories listed in the instructions. For additional space use continuations sheets (Form 10-900a). Type all entries.

1. Name of Property

historic name Nissly Swiss Chocolate Company
other name/site number N/A

2. Location

street & number 951 Wood Street na not for publication
city, town Mount Joy Borough na vicinity
state Pennsylvania code PA county Lancaster code 071 zip code 17552

3. Classification

Ownership of Property	Category of Property	Number of Resources within Property	
<input checked="" type="checkbox"/> private	<input checked="" type="checkbox"/> building (s)	Contributing	Noncontributing
<input type="checkbox"/> public-local	<input type="checkbox"/> district	<u>2</u>	<u>1</u> buildings
<input type="checkbox"/> public-State	<input type="checkbox"/> site	<u> </u>	<u>1</u> sites
<input type="checkbox"/> public-Federal	<input type="checkbox"/> structure	<u> </u>	<u>2</u> structures
	<input type="checkbox"/> object	<u>2</u>	<u>2</u> objects
			<u> </u> Total

Name of related multiple property listing N/A
Number of contributing resources previously listed in the National Register 0

4. State/Federal Agency Certification

As the designated authority under the National Historic Preservation Act of 1966, as amended, I hereby certify that this nomination request for determination of eligibility meets the documentation standards for registering properties in the National Register of Historic Places and meets the procedural and professional requirements set forth in 36 CFR Part 60. In my opinion, the property meets does not meet the National Register criteria. See continuation sheet.
Brent Glass Brent Glass, Executive Director 05-15-96
Signature of commenting or other official Date
PA Historical and Museum Commission
State or Federal agency or bureau

In my opinion, the property meets does not meet the National Register criteria. See continuation sheet.
Signature of commenting or other official _____ Date _____
State or Federal agency or bureau _____

5. National Park Service Certification

I, hereby, certify that this property is:
 entered in the National Register.
 See continuation sheet.
 determined eligible for the National Register. See continuation sheet.
 determined not eligible for the National Register.
 removed from the National Register.
 other, (explain:) _____
Edson R. Beall 6-28-96
Entered in the National Register _____
Signature of the Keeper Date of Action

6. Function or Use

Historic Functions (enter categories from instructions)

Current Functions (enter categories from instructions)

INDUSTRY/Manufacturing Facility

INDUSTRY/Manufacturing Facility

7. DescriptionArchitectural Classification
(enter categories from instructions)

Materials (enter categories from instructions)

No Style

foundation STONE
 walls CONCRETE

 roof SYNTHETIC
 other GLASS

Describe present and historic physical appearance.

The Nissly Swiss Chocolate Company factory (1920) is located along the south side of the Conrail railroad line in the western section of Mount Joy Borough, an area historically known as Florin. The parcel is bounded by Wood Street to the south, by Apple Alley to the east and by an adjacent property to the west. Land to the north of the railroad line is largely industrial in use and character. Single family residences, typically built during the second half of the twentieth century, line Wood Street to the south, east and west of the factory. Because of its size and massing, the Nissly Swiss Chocolate Company is the most visually prominent building within the Wood Street neighborhood. The site includes three buildings: the contributing principal three story factory building measuring approximately sixty by one hundred feet, a contributing one story boiler room building (1920) measuring approximately thirty by fifty feet, and a non-contributing one story metal warehouse building (1965) measuring approximately eighty by ninety feet. The Nissly Swiss Chocolate Company factory is a three story rectangular reinforced concrete industrial building on a full raised basement. A secondary T wing projects from the factory's north elevation. The boiler room building is located west of the factory and is connected to it by a covered loading dock. The metal warehouse building abuts the factory to the south. The loading dock is non-contributing.

Constructed in 1920, the three bay by six bay factory was designed to maximize daylight work areas and has large expanses of metal industrial windows. Bays are separated by the exposed concrete skeletal system, expressed on the exterior by vertical concrete pilasters and horizontal concrete beams. The openings between the skeletal framing are typically infilled with industrial windows resting on concrete sills that cap low brick apron walls. The building has a minimally pitched gable built-up roof concealed by a brick parapet wall with tile copings. The structural cornerposts of the building are visually accentuated by their projection above the parapet and their concrete caps. A brick elevator penthouse is located atop the northwest corner of the secondary T wing.

The north elevation faces the railroad and is six bays wide. The secondary T wing projects one bay from the main block of the building and is represented by the fourth and fifth bays (from the south). All bays of the second and third floor levels retain their historic metal industrial windows resting on concrete sills capping low brick apron walls. The windows at the three eastern bays of the first floor level have been replaced with frame infill and smaller profile aluminum windows. A cargo entrance, with a sliding metal door, is located at the western bay of the wing corresponding to an interior elevator shaft. The western bay of the first floor level is obscured by a recent concrete block addition. Historic windows remain in the three eastern bays of the ground floor level. Windows at the ground floor of the wing have been replaced with concrete block infill.

United States Department of the Interior
National Park Service

National Register of Historic Places Continuation Sheet

Section number 7 Page 1

Nissly Swiss Chocolate Company
Lancaster County, PA

The east elevation is three bays wide and retains historic window wall systems in all bays of the second, third and ground floor levels. A pedestrian entrance is located at the southern bay of the first floor level and is accessed by a concrete staircase with simple pipe railings. The paired aluminum frame entrance doors, and the aluminum window systems in the remaining bays of the first floor level, are modern alterations, as is the pent roof between the first and second floor levels. A brick flue, located between the second and third bays (from the south) was also added in recent years to service a mechanical room at the ground floor level.

The metal warehouse building obscures the ground and first floor levels of the second through the fifth bays of the south elevation. All remaining areas retain their historic industrial window systems. A concrete block addition and the loading dock obscure the ground and first floor levels of the west elevation. As is typical of the other elevations, the upper levels retain their historic appearance.

The four levels of the interior of the factory retain their open manufacturing plans and natural lighting. The building's structural system is expressed through two rows of concrete columns, concrete ceilings with exposed concrete beams, exposed window wall systems with metal case industrial windows over brick apron walls, and concrete floors. Partitioning is minimal and generally consists of a stair tower at the southeast corner of the building, frame office partitions at the east end of the first floor and a mechanical room at the ground floor. A freight elevator, a second stair tower, and bathroom and closet spaces are located within the T wing. The concrete open well stairs have simple pipe handrails. The west wall of the first floor level was removed when a concrete block addition was constructed circa 1970.

Boiler Room Building

The boiler room building, now connected to the factory by a recent concrete block loading dock with a metal shed roof, is of similar design and construction to the factory. Constructed with a reinforced concrete frame, the four by three bay ell-shaped building has a flat roof concealed by low parapets and tile copings. The south elevation has modern garage entrances with overhead metal doors in its three western bays and a pedestrian entrance and window in its eastern bay. All of these are modern alterations, as is the plywood siding that covers the elevation. The west elevation retains a historic window wall system, similar to those of the factory, in its center bay. The northern bay is infilled with brick, the southern bay is infilled with concrete block and both bays have pedestrian entrances with simple metal doors. The eastern bay of the north elevation retains its historic window wall systems and the western bays are infilled with concrete block. The loading dock obscured the entire eastern elevation.

The interior of the boiler room building was converted for use as an automobile repair shop in recent years. Its open plan and exposed finishes are largely intact. The loading dock that extends between the boiler room building and the factory is a modern addition. Retaining a moderate degree of architectural integrity, the boiler room building is in generally fair condition.

United States Department of the Interior
National Park Service

National Register of Historic Places Continuation Sheet

Section number 7 Page 2

Nissly Swiss Chocolate Co.
Lancaster County, PA

Metal Warehouse

The metal warehouse building was constructed in 1965 and does not contribute to the historic character of the property.

Integrity

The Nissly Swiss Chocolate Company factory retains a high degree of integrity. Alterations to the exterior of the factory have generally been limited to the replacement of some first floor level windows and the construction of the one story addition and the noncontributing covered loading platform infill. None of these alterations has had a substantial negative impact on the overall historic character of the building. Despite minimal cyclical maintenance in recent years, the building is in generally good condition.

The architectural integrity of the boiler room building has been compromised by the replacement of its southern window wall systems and the covering of the south elevation with modern materials. The building retains integrity of location and enough of its overall massing and appearance to continue to contribute to the historic character of the site.

The metal warehouse building and concrete block loading dock are non-contributing.

United States Department of the Interior
National Park Service

**National Register of Historic Places
Continuation Sheet**

Section number 8 Page 1

Nissly Swiss Chocolate Company
Lancaster County, PA

Construction began on the factory in May 1920 and was completed the following March, with operations commencing on 1 April 1921.⁴ Built of cast-in-place concrete, sturdy enough to withstand the weight and vibration of the candy-making machinery, the factory was extremely well lit with natural light due to its extensive window wall systems. The large building, covering approximately 50,000 feet of floor space, employed people from nearby farms and from the village of Florin and Borough of Mount Joy.⁵ The company had plans to erect its own creamery to process milk for the chocolate but never implemented them. According to a family history, Walter and Lloyd Nissly "were not the least bit interested in the business" and the company went into bankruptcy during the Great Depression.⁶ The "chocolate manufacturing plant, power plant/warehouse, railroad siding and all machinery and equipment connected therewith" were sold to the Harrisburg Trust Company 27 January 1933 for \$750.00.⁷

After 1933, the Nissly Swiss Chocolate Company factory became the site of several other light manufacturing firms. The Lancaster Shoe Company owned the property from 1939 to 1945, when Herbert Posner bought it to house the Defense Plant Corporation's Motors Incorporated-Dewalt Corporation Plant.⁸ The Pennsylvania Farm Bureau Corporation Association obtained ownership of the property in June of 1947, which then included a four story reinforced concrete factory building, a one-story brick and concrete power house and a one story frame store house.⁹ The Farm Bureau retained ownership of the property until 1965, when it was sold to Agway, Inc. Agway added a metal warehouse building to the site south of the factory.¹⁰ The property was the home of Spangler's Flour Mills, Inc. from 1973 through 1977.¹¹ The current owners Orchard View Farms, Inc., bought the property in 1979 for \$166,000 from Lester A. and Elaine J. Brenaman.¹² The first floor level is presently used for the refurbishing of wooden pallets and the remainder of the complex is vacant.

Analysis of the Nissly Swiss Chocolate Company's impact on the economy of the Borough of Mount Joy is hindered by the company's relatively short span of operation from 1920 through 1929. No specific employment figures for the facility have been located. The 1920 manufacturer's census records that the \$2,971,765 in chocolate, cocoa and confection products produced in Lancaster County in that year were produced by twenty firms employing 809 workers.¹³ Still, no breakdown is available for the number of these workers employed in the county's chocolate factories, as distinguished from its caramel and other confectionery producing facilities. H. M. J. Klein's 1924 History of Lancaster County, gives some suggestion of the relative breakdowns between these types of candy producers. Citing employment figures for four factories, none of which were milk chocolate producers, he indicates that the county's chocolate factories employed more workers than his four examples:

For instance, the Charles F. Adams plant employs 200 male and 100 female workers; the American Caramel Company finds work for 300 male and 225 female work-

United States Department of the Interior
National Park Service

National Register of Historic Places Continuation Sheet

Section number 8 Page 2

Nissly Swiss Chocolate Co.
Lancaster County, PA

ers; R. F. Keppel & Brother employ about 125; and R. E. Rodda Candy Company about 100 workers. Some of the large and rapidly expanding milk-chocolate parts in other parts of Lancaster County employ greater numbers.¹⁴

A comparison of the known size of the county's chocolate factories may give some indication of the relative number of workers in each, since the manufacturing processes were similar. At 50,000 square feet, the Nissly Factory was the same size as Bachman's Mount Joy factory, but only a third the size of Klein's 150,000 square foot Elizabethtown facility. Klein's factory, according to H. M. J. Klein's history, was "the largest exclusively milk-chocolate manufactory in Lancaster County."¹⁵

Regardless of the size of the Nissly workforce, comparison of county directories for the period indicates there were relatively few industries within Mount Joy Borough. The Nissly Factory and the nearby Bachman factory were certainly consequential local employers during their periods of operations. However, the short production span of the Nissly facility minimized its long term impact on the local economy.

Lancaster Chocolate Industry

In the years preceding 1865, the United States was dependent on Europe for all but the crudest of confections. By the turn of the century, the chocolate industry in this country grew substantially. United States consumption of chocolate and cocoa related-products for 1914, 1915 and 1916 amounted to 194,691,014 pounds.¹⁶ In 1920, the fourteenth Census ranked Pennsylvania's production of chocolate and cocoa related products as the highest among all states.¹⁷ By then, the manufacture of chocolate in Lancaster County had become a significant industry. The Pennsylvania Department of Internal Affairs in 1922 recorded that Lancaster County produced 34,504,500 pounds of candy.¹⁸ Capital investments in the industry exceeded \$3,000,000.¹⁹

In 1921, Lancaster County could boast at least twenty large candy manufacturers and confectioners.²⁰ No less than six companies produced candies for the wholesale trade, with three candy firms making products for their own retail business and for a large mail order business. The quality and flavor of some Lancaster candies was so well known that it was difficult to fill all of the orders.²¹ In that year, 809 persons throughout the county were employed by these factories.²²

The ready availability of fresh milk from local dairy farmers was a primary reason for many confectioners locating their businesses in the area. The annual requirements for milk to supply these factories, as well as the nearby Hershey Chocolate Factory, amounted to the output of at least two thousand farms, or a herd of 10,000 milk cows. It was estimated that approximately 50,000,000 pounds of milk a year from Lancaster County dairymen supplied these chocolate manufacturers.²³ This substantial market contributed to the county leading the state in dairy production by 1940.²⁴

United States Department of the Interior
National Park Service

National Register of Historic Places Continuation Sheet

Section number 8 Page 3

Nissly Swiss Chocolate Company
Lancaster County, PA

Milton S. Hershey, founder of the Hershey Chocolate Company, played a prominent role in the development of industrial candy production in Lancaster County. Hershey, born in Derry Church, Dauphin County, began his career in confections in Lancaster City. He served as an apprentice to Joseph R. Royer at Royer's Confectionery and Ice Cream Parlor on West King Street from 1872 to 1876.²⁵ After failed individual business attempts in Philadelphia, Denver and New York, Hershey returned to Lancaster in September 1885 to try his hand in caramel manufacturing. He founded the Lancaster Caramel Company which he sold in 1900 for one million dollars to a rival manufacturer, The American Caramel Company.²⁶ Included in this transaction was the factory, machinery, stock in hand, formulas and trademark, with Hershey retaining the right to manufacture chocolate, which he resumed in 1905 when the Hershey Chocolate Factory began operations in Derry Church.

Milton S. Hershey's influence on Lancaster's candy manufacturing industry was substantial. His success with the Lancaster Caramel Company set an example for others to follow. In addition, many of his employees flourished under his direction, several subsequently breaking from his organization to form their own manufacturing companies. One of the major candy manufacturing centers in Lancaster City was Keppel Candy located on North Queen Street. Hershey extended credit to Robert Keppel in 1915. Keppel Candy was renowned for its chocolate covered marshmallow holiday candies, sales of which amounted to 200,000 pounds during an average Easter season.²⁷

Other major candy companies with employees from the Hershey organization included The Klein Chocolate Company in Elizabethtown and the Bachman Chocolate Company in Mount Joy. The Klein Chocolate complex opened in 1913 in a large building of approximately 150,000 square feet.²⁸ The Bachman Company's facility, constructed circa 1915, had a creamery built on site where milk could be condensed as needed.²⁹ The Ideal Chocolate plant in Lititz was originally a milk-condensing creamery for the Kendig Chocolate Company located next door. Its name was changed from the Lititz Condensed Milk Company in 1902 when Kendig and the Lititz Milk Companies merged. H. O. Wilbur and Sons took over management of the factory in 1930, as they had of the Bachman plant in 1915.³⁰

Architectural Significance

Eli Nissly utilized the then popular method of construction for industrial buildings consisting of an exposed concrete skeleton and curtain walls of glass and brick.³¹ This daylight factory design was developed in 1903 and was very different from earlier factory construction during the industrial revolution. Earlier buildings relied on solid masonry exterior walls, with rows of small windows, and internal post and beam floor systems.³² By 1910, concrete construction for industrial buildings became very popular in the United States.³³ The earliest of these concrete industrial buildings followed the design principles of their predecessors, replacing masonry bearing walls with those of concrete. After World War I, the reinforced concrete frame with brick spandrels and factory sash was established as the standard mode.³⁴ The use of concrete skeletal frames had great advantages over earlier counterparts. Cast in place concrete could be speedily erected on site at a lower cost.

United States Department of the Interior
National Park Service

**National Register of Historic Places
Continuation Sheet**

Section number 8 Page 4

Nissly Swiss Chocolate Co.
Lancaster County, PA

The system also shifted the support of the weight of the building from the exterior walls to the frames, allowing for the expansion of window systems. This resulted in cutting the cost of secondary lighting sources. Concrete also provided greater structural strength and stability against the shocks and vibrations caused by heavy industrial equipment. The fireproof nature of concrete also added to its favor, as did its ease of maintenance.³⁵ The reinforced concrete skeletal frame was also favored because of the weight and vibration of the machinery used in the manufacture of chocolate and cocoa and because it provided a well lighted and ventilated workspace. Additionally, the open design of the spaces provided for ease in moving candy throughout the building without large structural obstacles.

Of the four surviving examples of Lancaster County's early twentieth-century industrial chocolate production facilities, the Nissly Swiss Chocolate Company factory building retains the highest degree of architectural integrity. Unlike Nissly, the remaining factories, those of Wilbur Chocolate in Lititz and Mount Joy and M & M Mars in Elizabethtown, have continued to be utilized for their original purpose and have largely been incorporated into expanding industrial facilities. The older portions of the M & M Mars plant have been substantially compromised by later expansions and the infill of exterior walls. The Wilbur plant has been compromised to a lesser degree, with small expansions, fewer window alterations, and by its having been painted on the exterior. Wilbur's Lititz plant also utilizes a masonry bearing wall building that pre-dates the use of structural concrete skeleton framing.

In 1995, Lancaster County has two large scale chocolate confectioners remaining in business. Wilbur Chocolate, with its headquarters in Lititz and a secondary plant in Mount Joy, and M & M Mars of Elizabethtown are large nationally recognized producers. Coupled with Hershey Incorporated, these three companies have typically outgrown the size of their earlier turn of the century manufacturing buildings. These older facilities still exist, but for the most part have been greatly altered and modified within the context of larger production facilities.

Notes

¹ Lancaster, PA, Lancaster County Recorder of Deeds, Deed Book U, Volume 18, p. 3.

² Klein, P. 680.

³ Ibid, pp. 148 and 680.

⁴ Ibid, pp. 148.

⁵ Ibid, pp. 148.

⁶ Trimmer, Pauline N. *Treasured Memories: Memoirs of Pauline N. Trimmer*. (n.p.), p. 17.

⁷ Deed Book F, Volume 31, p. 476.

⁸ Deed Book E, Volume 34, p. 387 and Deed Book Q, Volume 37, 137; Sanborn Fire Insurance Maps, 1945.

⁹ Deed Book Q, Volume 37, p. 139.

¹⁰ Deed Book Q, Volume 54, p. 1023.

¹¹ Deed Book K, Volume 63, p. 453.

United States Department of the Interior
National Park Service

**National Register of Historic Places
Continuation Sheet**

Section number 8 Page 5

Nissly Swiss Chocolate Company
Lancaster County, PA

¹² Deed Book D. Volume 78, p. 360.

¹³ 1920 Manufacturer's census.

¹⁴ H. M. J., Ph.D. History of Lancaster County. (4 vols. New York: Lewis Historical Publishing Company, Inc., 1924) Volume 2, p. 680.

¹⁵ Ibid.

¹⁶ Cocoa and Chocolate: A Short History of Their Production and Use. (Dorchester, MA: Walter Baker & Co., 1917), p. 8.

¹⁷ Fourteenth Manufactures Census (U.S. Bureau of Census, 1920).

¹⁸ Klein, p. 679.

¹⁹ Ibid; David B. Schneider, Foundations in a Fertile Soil (Lancaster, PA: The Historic Preservation Trust of Lancaster County, 1994), p. 33.

²⁰ 1921 Lancaster City and County Directory. (Lancaster, PA: 1921)

²¹ Roddy, H. Justin. Physical and Industrial Geography of Lancaster County, Pennsylvania. (Lancaster, PA: The New Era Printing Co., 1916), p. 107.

²² Fourteenth Manufactures Census .

²³ Klein, p 680.

²⁴ Schneider, p. 33.

²⁵ Castner, Charles Schuyler. One of a Kind: Milton Snavely Hershey 1857-1945. (Hershey, PA: The Derry Literary Guild, 1983), p. 22.

²⁶ Castner, p. 74.

²⁷ Historic Sites Files, Keppel Candy.

²⁸ Klein, p. 680.

²⁹ Ibid.

³⁰ Hilbert, David E. A Study of "Wilbur Chocolate Company, Incorporated" Lititz, Pennsylvania: Its History and Associated Technology. (Millersville, PA: Millersville University, n.p., 1972), p. 12.

³¹ Huxtable, Ada Louise. "Concrete Technology in U.S.A.: Historical Survey, Progressive Architecture. Vol. 41 no. 10, pp. 143-149.

³² Banham, Reyner. A Concrete Atlantis: US Industrial Buildings and European Modern Architecture 1900-1925. (Cambridge, MA: The MIT Press, 1986), p.29.

³³ Ibid.

³⁴ Huxtable, p. 149.

³⁵ Banham, p.62.

9. Major Bibliographic References

Banham, Reyner. A Concrete Atlantis: US Industrial Buildings and European Modern Architecture 1900-1925. Cambridge, MA: The MIT Press, 1986.

Bomberger, Bruce and William Sisson. Made in Pennsylvania: An Overview of the Major Historical Industries of the Commonwealth. Harrisburg, PA: Pennsylvania Historical and Museum Commission, 1991.

Castner, Charles Schuyler. One of A Kind: Milton Snavely Hershey 1857-1945. Hershey, PA: The Derry Literary Guild, 1983.

Cocoa and Chocolate: A Short History of Their Production & Use. Revised Edition.Dorchester, MA: Walter Baker & Co., 1917.

Previous documentation on file (NPS):

- preliminary determination of individual listing (36 CFR 67) has been requested
- previously listed in the National Register
- previously determined eligible by the National Register
- designated a National Historic Landmark
- recorded by the Historic American Buildings Survey # _____
- recorded by the Historic American Engineering Record # _____

See continuation sheet

Primary location of additional data:

- State historic preservation office
- Other State agency
- Federal agency
- Local government
- University
- _____

Specify repository

10. Geographic Data

Acreage of property 2.8 acres

UTM References

A 18 | 369840 | 4441250
 Zone Easting Northing

B _____ | _____ | _____
 Zone Easting Northing

C _____ | _____ | _____
 Zone Easting Northing

D _____ | _____ | _____
 Zone Easting Northing

Columbia West quadrangle

See continuation sheet

Verbal Boundary Description

The boundary of the nominated property includes the entire parcel numbered 10 E 3-6-23 in the office of the Tax Assessment Office, Lancaster County, Pennsylvania.

See continuation sheet

Boundary Justification

The boundary includes the entire current tax parcel only, which represents the historical acreage of the industrial site.

See continuation sheet

11. Form Prepared By

name/title Karen E. Denlinger, David B. Schneider

organization Historic Preservation Trust of Lancaster County date 6/15/95; revised 1/31/96

street & number 123 North Prince Street telephone (717) 291-5861

city or town Lancaster state Pennsylvania zip code 17603

United States Department of the Interior
National Park Service

National Register of Historic Places Continuation Sheet

Nissly Swiss Chocolate Co.
Lancaster County, PA

Section number 9 Page 1

- Collins, Peter. Concrete: The Vision of a New Architecture: A Study of Auguste Perret and his Precursors. London: Faber and Faber, 1959.
- Condit, Carl W. Daniel J. Boorstin, ed. American Building Materials and Techniques from the First Colonial Settlements to the Present. Chicago: The University of Chicago Press, 1968.
- Fourteenth Manufactures Census . U.S. Bureau of Census, 1920.
- Huxtable, Ada Louise. "Concrete Technology in the United States of America: Historical Survey." Progressive Architecture. Vol. 41, No 10 (October 1960).
- Hilbert, David E. A Study of "Wilbur Chocolate Company, Incorporated" Lititz Pennsylvania: Its History and Associated Technology. n.p. Millersville, PA.
- Interview with Jim Heisley, Mount Joy, Pennsylvania, 6 March 1995.
- Klein, H. M. J., Ph. D. Lancaster County Pennsylvania: A History. 4 vols. New York: Lewis Historical Publishing Company, Inc., 1924.
- Lancaster, Pennsylvania. Historic Preservation Trust of Lancaster County, Historic Sites Survey Files, "Keppel Candy."
- Lancaster, Pennsylvania. Lancaster County Recorder of Deeds. Deed Book U, Volume 18, p. 3; Deed Book B, Volume 28, p. 57; Deed Book F, Volume 31, p. 476; Deed Book E, Volume 34, p. 387; Deed Book Q, Volume 37, p. 137; Deed Book 37, p. 139; Deed Book Z, Volume 38, p. 337; Deed Book Q, Volume 54, p. 1023; Deed Book K, Volume 63, p. 453; Deed Book G, Volume 70, p. 43; Deed Book D, Volume 78, p. 360.
- Lancaster, Pennsylvania. Lancaster County Historical Society. City and County Directories.
- Trimmer, Pauline N. "Treasured Memories: Memoirs of Pauline N. Trimmer." n.p.
- Roddy, H. Justin. Physical and Industrial Geography of Lancaster County, Pennsylvania. Lancaster, PA: The New Era Publishing Co., 1916.
- Sanborn Fire Insurance Maps. 1928, 1945.
- Schneider, David B. Foundations in a Fertile Soil. Lancaster, PA: The Historic Preservation Trust of Lancaster County, 1994.
- U. S. Census of Manufacturers, Federal Decennial Census, 1920, Pennsylvania.
- Winnpenny, Thomas R. Industrial Progress and Human Welfare: The Rise of the Factory System in Nineteenth Century Lancaster. Washington: University Press of America, Inc., 1982.

United States Department of the Interior
National Park Service

National Register of Historic Places Continuation Sheet

Accompanying Documentation, Continuation Sheet #1

Section number _____ Page _____

Nissly Swiss Chocolate Company
Lancaster County, PA

Photographs:

1. Nissly Swiss Chocolate Company
2. 951 Wood St., Mount Joy Borough, Lancaster County, Pennsylvania
3. John P. Herr
4. June 1995
5. Historic Preservation Trust of Lancaster County, Lancaster, Pennsylvania

The above information is the same for the following photographs:

6. View of north (right) and east (left) elevations, camera facing southwest
7. Photo #1

6. View of west (left) and south (right) elevations and site, camera facing northeast
7. Photo #2

6. View of interior, camera facing southwest
7. Photo #3

6. View of interior, camera facing east
7. Photo #4

United States Department of the Interior
National Park Service

National Register of Historic Places Continuation Sheet

Accompanying Documentation, Continuation Sheet #2

Section number ____ Page ____

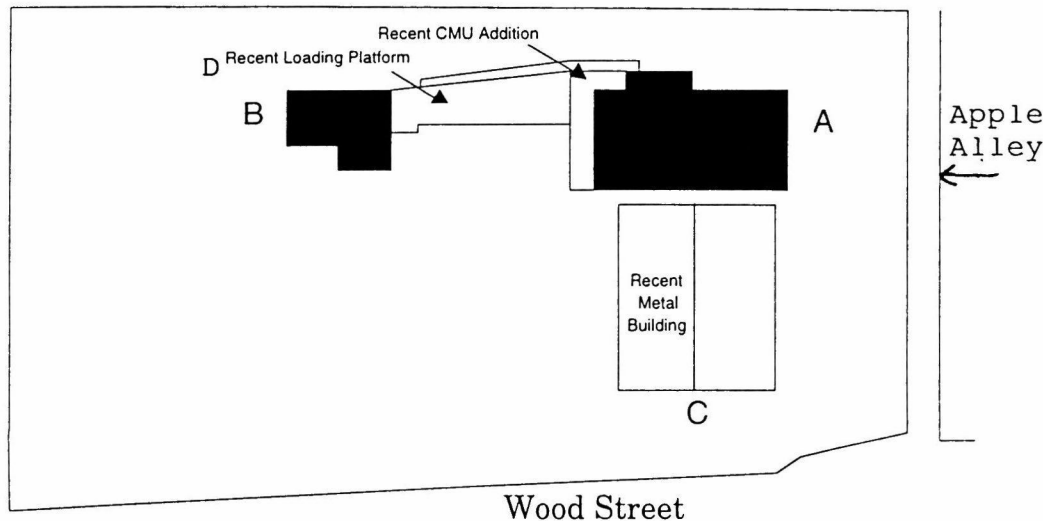
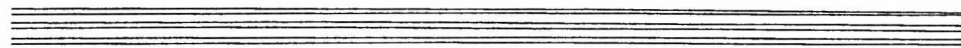
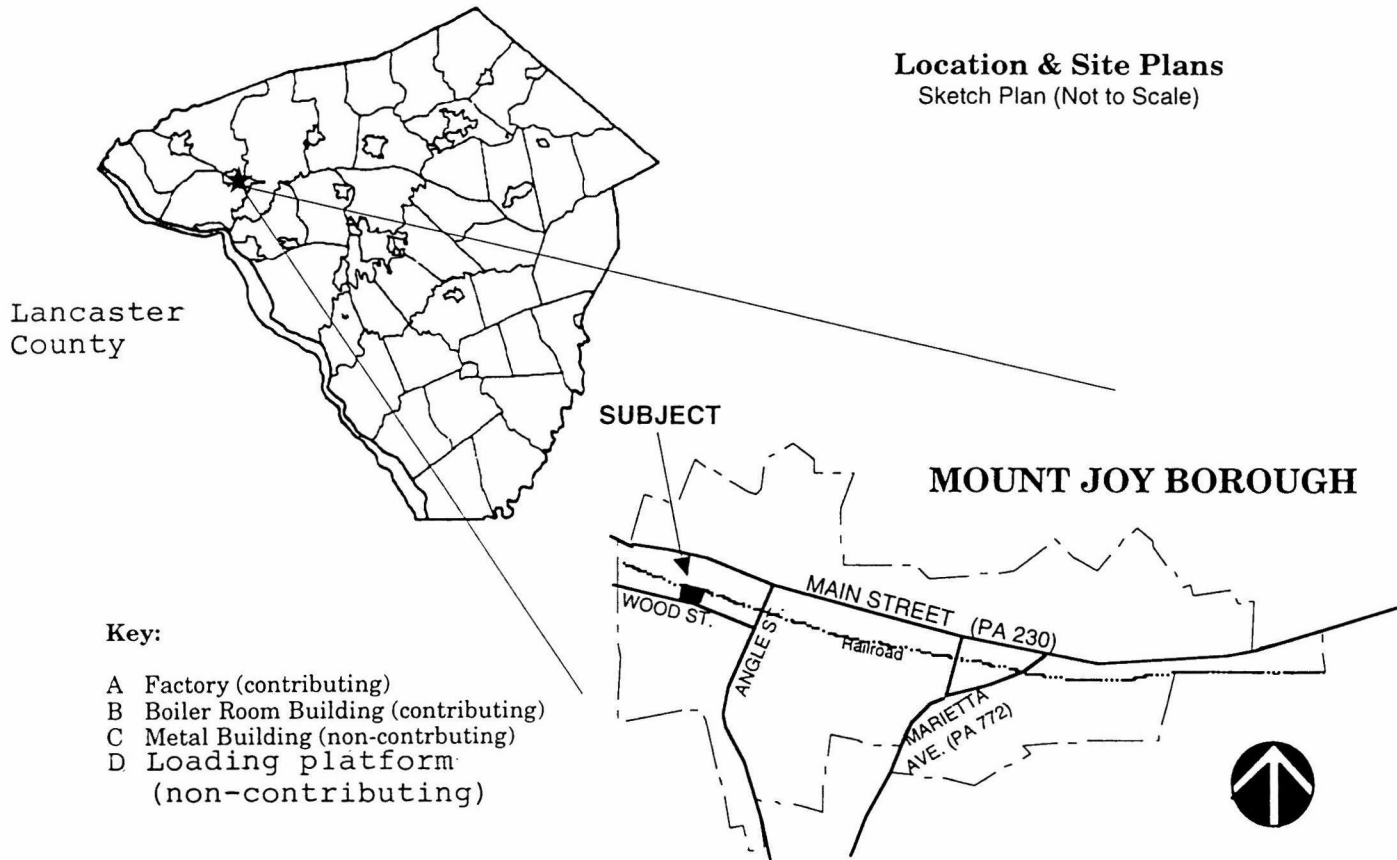
Nissly Swiss Chocolate Co.
Lancaster County, PA

Nissly Swiss Chocolate Company

951 Wood Street, Mount Joy Borough, Lancaster County, PA
071-39-0031

Location & Site Plans

Sketch Plan (Not to Scale)



United States Department of the Interior
National Park Service

National Register of Historic Places Continuation Sheet

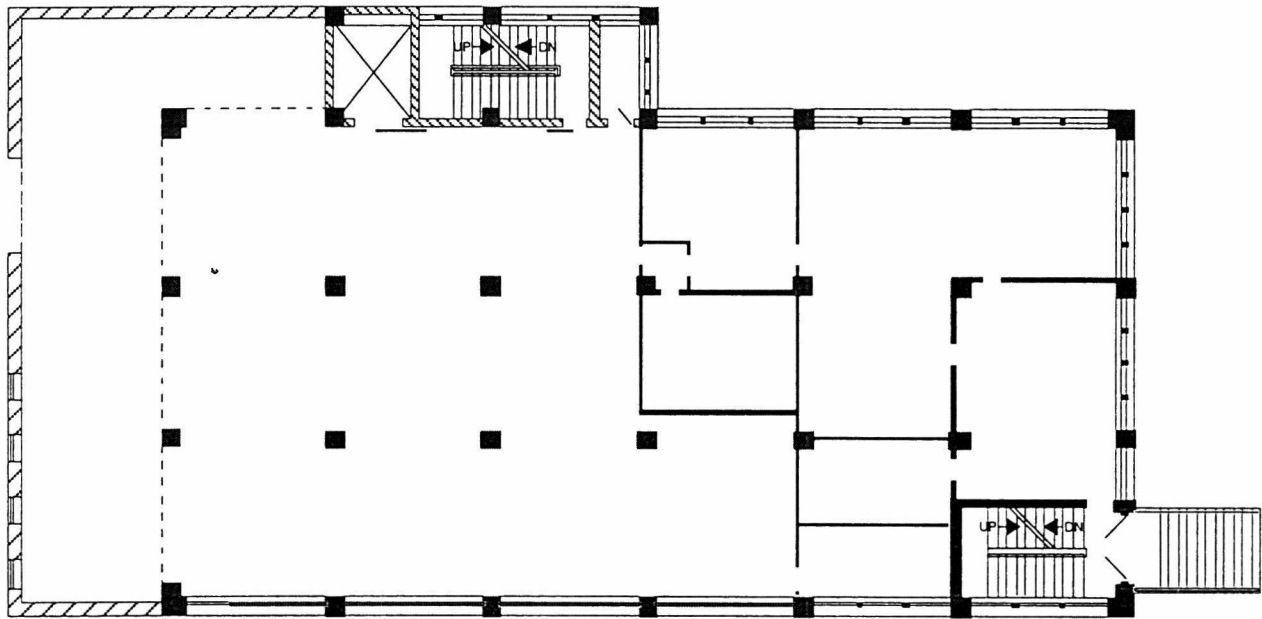
Accompanying Documentation, Continuation Sheet #3

Section number _____ Page _____

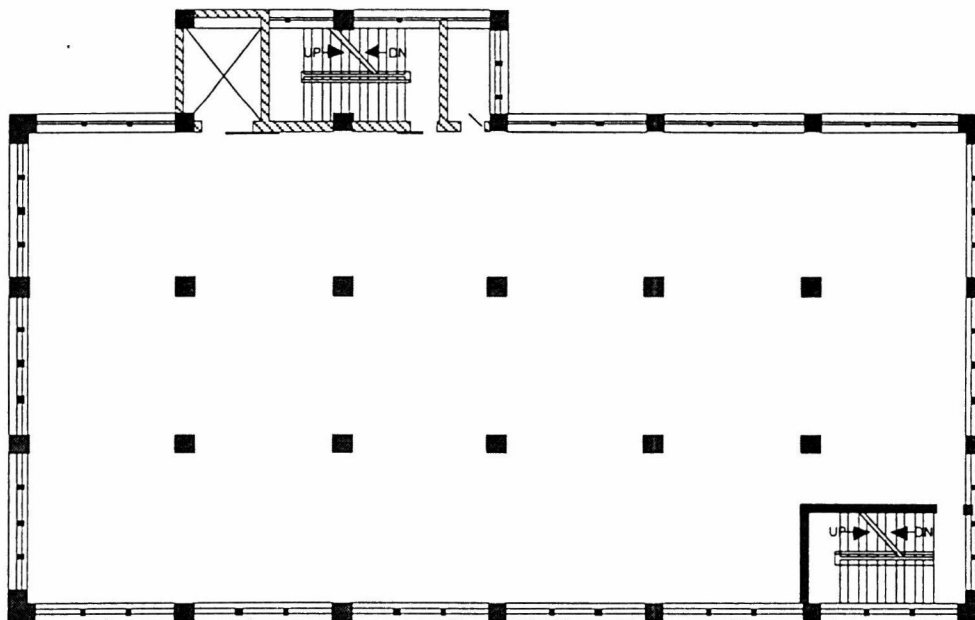
Nissly Swiss Chocolate Company
Lancaster County, PA

Nissly Swiss Chocolate Company

951 Wood Street, Mount Joy Borough, Lancaster County, PA
071-39-0031



FIRST FLOOR PLAN - Existing



SECOND FLOOR PLAN - Existing



United States Department of the Interior
National Park Service

National Register of Historic Places Continuation Sheet

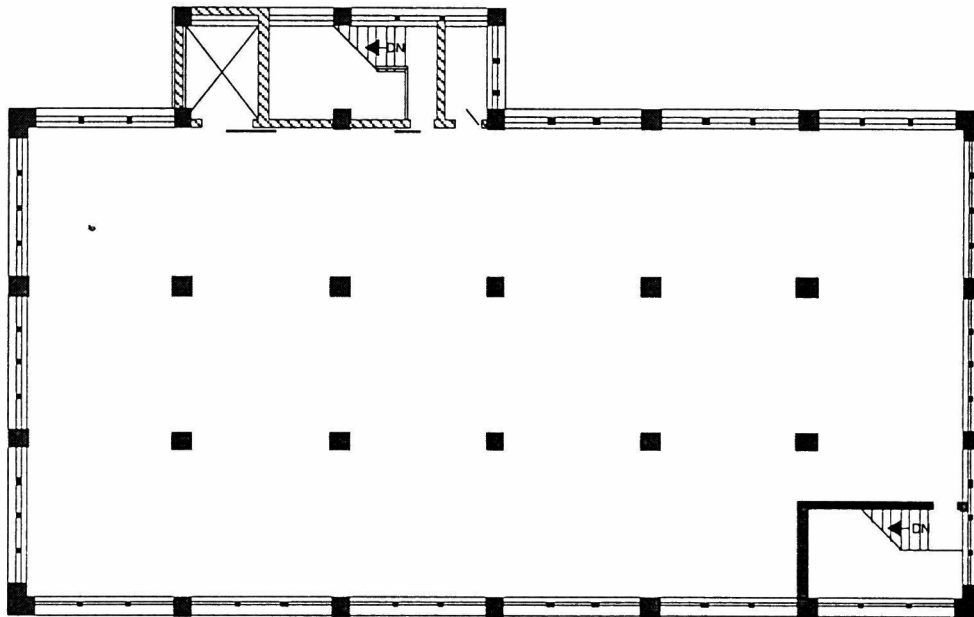
Accompanying Documentation, Continuation Sheet #4

Section number _____ Page _____

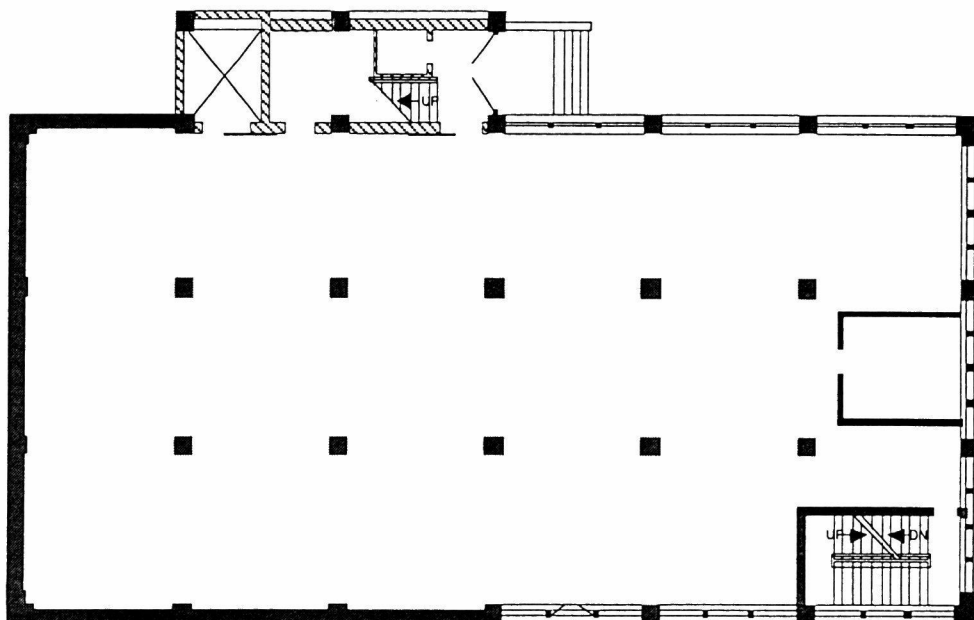
Nissly Swiss Chocolate Co.
Lancaster County, PA

Nissly Swiss Chocolate Company

951 Wood Street, Mount Joy Borough, Lancaster County, PA
071-39-0031



THIRD FLOOR PLAN - Existing



GROUND FLOOR PLAN - Existing



UNITED STATES DEPARTMENT OF THE INTERIOR
NATIONAL PARK SERVICE

NATIONAL REGISTER OF HISTORIC PLACES
EVALUATION/RETURN SHEET

REQUESTED ACTION: NOMINATION

PROPERTY Nissly Swiss Chocolate Company
NAME:

MULTIPLE
NAME:

STATE & COUNTY: PENNSYLVANIA, Lancaster

DATE RECEIVED: 5/31/96 DATE OF PENDING LIST: 6/12/96
DATE OF 16TH DAY: 6/28/96 DATE OF 45TH DAY: 7/15/96
DATE OF WEEKLY LIST:

REFERENCE NUMBER: 96000709

NOMINATOR: STATE

REASONS FOR REVIEW:

APPEAL: N DATA PROBLEM: N LANDSCAPE: N LESS THAN 50 YEARS: N
OTHER: N PDIL: N PERIOD: N PROGRAM UNAPPROVED: N
REQUEST: N SAMPLE: N SLR DRAFT: N NATIONAL: N

COMMENT WAIVER: N

ACCEPT RETURN REJECT 6.28.96 DATE

ABSTRACT/SUMMARY COMMENTS:

Entered in the
National Register

RECOM./CRITERIA _____

REVIEWER _____ DISCIPLINE _____

TELEPHONE _____ DATE _____

DOCUMENTATION see attached comments Y/N see attached SLR Y/N



NISSLY SWISS CHOCOLATE FACTORY

851 WOOD STREET

MOUNT JOY BORO, PENNSYLVANIA, Lancaster Co.

JOHN P. HERR

JUNE, 1995

HISTORIC PRESERVATION TRUST OF LANCASTER COUNTY

NORTH AND EAST ELEVATIONS, LOOKING SOUTHWEST

#1



1. NISSLY SWISS CHOCOLATE FACTORY
951 WOOD STREET
2. MOUNT JOY BORO, PA, Lancaster Co.
3. JOHN P. HERR
4. JUNE, 1995
5. HISTORIC PRESERVATION TRUST OF LANCASTER COUNTY
6. SOUTH AND WEST ELEVATIONS, LOOKING NORTHEAST
7. PHOTO #2



1. NISSLY SWISS CHOCOLATE FACTORY
951 WOOD STREET
2. MOUNT JOY BORO, PA, Lancaster Co.
3. JOHN P. HERR
4. JUNE 1995
5. HISTORIC PRESERVATION TRUST OF LANCASTER COUNTY
6. INTERIOR, LOOKING SOUTHWEST
7. PHOTO #3

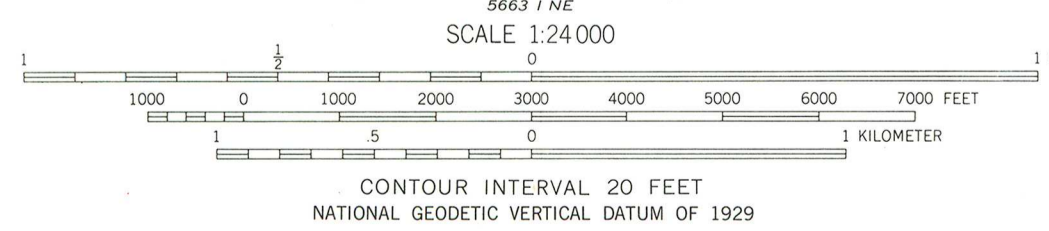
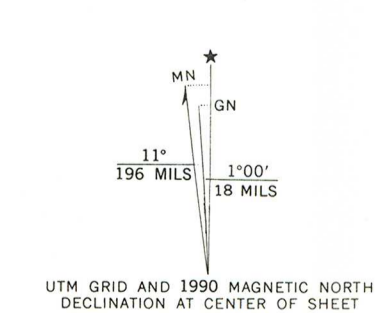


1. NISSLY SWISS CHOCOLATE FACTORY
951 WOOD STREET
2. MOUNT JOY BORO, PA, Lancaster Co.
3. JOHN P. HERR
4. JUNE, 1995
5. HISTORIC PRESERVATION TRUST OF LANCASTER COUNTY
6. INTERIOR, LOOKING WEST
7. PHOTO #4



NISSLY SWISS CHOCOLATE
COMPANY
LANCASTER COUNTY,
COLUMBIA WEST, PA
18 36940 4441250

Mapped, edited, and published by the Geological Survey
Control by USGS and USC&GS
Topography by photogrammetric methods from aerial
photographs taken 1961. Field checked 1964
Polyconic projection. 1927 North American datum
10,000-foot grid based on Pennsylvania coordinate system, south zone
1000-meter Universal Transverse Mercator grid ticks,
zone 18, shown in blue
To place on the predicted North American Datum 1983
move the projection lines 6 meters south and
28 meters west as shown by dashed corner ticks
Fine red dashed lines indicate selected fence and field lines where
generally visible on aerial photographs. This information is unchecked
Red tint indicates areas in which only landmark buildings are shown



ROAD CLASSIFICATION

Heavy-duty	Light-duty
Medium-duty	Unimproved dirt
U.S. Route	State Route

THIS MAP COMPLIES WITH NATIONAL MAP ACCURACY STANDARDS
FOR SALE BY U. S. GEOLOGICAL SURVEY
DENVER, COLORADO 80225 OR RESTON, VIRGINIA 22092
A FOLDER DESCRIBING TOPOGRAPHIC MAPS AND SYMBOLS IS AVAILABLE ON REQUEST

Revisions shown in purple and woodland compiled in cooperation
with Commonwealth of Pennsylvania agencies from aerial photographs
taken 1987 and other sources. This information not field checked
Map edited 1990

COLUMBIA WEST, PA.
SE/4 MIDDLETOWN 15' QUADRANGLE
40076-A5-TF-024
1964
PHOTOREVISED 1990
DMA 5664 II SE - SERIES V831