

United States Department of the Interior
National Park Service

National Register of Historic Places
Registration Form

RECEIVED
MAR 23 1992

NATIONAL REGISTER

This form is for use in nominating or requesting determinations of eligibility for individual properties or districts. See instructions in Guidelines for Completing National Register Forms (National Register Bulletin 16). Complete each item by marking "x" in the appropriate box or by entering the requested information. If an item does not apply to the property being documented, enter "N/A" for "not applicable." For functions, styles, materials, and areas of significance, enter only the categories and subcategories listed in the instructions. For additional space use continuation sheets (Form 10-900a). Type all entries.

1. Name of Property

historic name Towanda Historic District

other names/site number N/A

2. Location

street & number Roughly bounded by Fifth, Elizabeth, River & Kingsbury N/A not for publication

city, town Towanda N/A vicinity

state Pennsylvania code PA county Bradford code 015 zip code 18848

3. Classification

Ownership of Property

- private
- public-local
- public-State
- public-Federal

Category of Property

- building(s)
- district
- site
- structure
- object

Number of Resources within Property

Contributing	Noncontributing	
441	41	buildings
1		sites
		structures
		objects
442	41	Total

Name of related multiple property listing:

N/A

Number of contributing resources previously listed in the National Register 1

4. State/Federal Agency Certification

As the designated authority under the National Historic Preservation Act of 1966, as amended, I hereby certify that this nomination request for determination of eligibility meets the documentation standards for registering properties in the National Register of Historic Places and meets the procedural and professional requirements set forth in 36 CFR Part 60.

In my opinion, the property meets does not meet the National Register criteria. See continuation sheet.

Brent D. Glass, PA Historical & Museum Commission

Signature of certifying official

Brent D. Glass

3/12/92 Date

State or Federal agency and bureau

In my opinion, the property meets does not meet the National Register criteria. See continuation sheet.

Signature of commenting or other official

Date

State or Federal agency and bureau

5. National Park Service Certification

I, hereby, certify that this property is:

- entered in the National Register. See continuation sheet.
- determined eligible for the National Register. See continuation sheet.
- determined not eligible for the National Register.
- removed from the National Register.
- other, (explain): _____

Katuck Andrus

5/2/92

Govt Signature of the Keeper

Date of Action

6. Function or Use

Historic Functions (enter categories from instructions)

Domestic Single Dwelling

Commerce/Trade - - Department Store

Government/courthouse

Current Functions (enter categories from instructions)

Domestic Single Dwelling

Commerce/Trade - Department Store

Government/courthouse

7. Description

Architectural Classification

(enter categories from instructions)

Greek Revival

Queen Anne

Classical Revival

Materials (enter categories from instructions)

foundation Stone

walls Brick

Weatherboard

roof Metal

other

Describe present and historic physical appearance.

SEE CONTINUATION SHEET

**United States Department of the Interior
National Park Service****National Register of Historic Places
Continuation Sheet**

Towanda Historic District

Section number 7 Page 1

The Towanda Historic District is located on a hilly tract next to the North Branch of the Susquehanna River. The streets form an irregular grid which is oriented to the river bank; the district's shape is similarly irregular. The predominant architectural styles are Greek Revival and Queen Anne, with Gothic Revival, Second Empire and Italianate styles also represented. Buildings in the downtown range in scale from the dominant bulk of the Bradford County Courthouse (National Register 1986 photo #27) down to two and three story commercial buildings on narrow plots; residential scale runs from small cottage-like houses up to rambling Queen Anne mansions on large lots. The structures are either brick or frame construction, as stone buildings are few. While some buildings date from the early years of the 19th and 20th centuries, the vast majority date from Towanda's economic heyday, which spanned the years 1830-1900. Though most of the downtown business district is included, the district is predominantly residential.

In the downtown area, south of Plank Road, Towanda's grid is regular with the majority of streets following North-South and East-West alignments. North of Plank Road, streets are generally laid out in relation to York Avenue, which runs toward the northwest. The streets nearest the River: North Main, William and River, align with the downtown grid, reflecting earlier development patterns. Streets parallel to the River represent older neighborhoods, while streets conforming to the York Street axis date primarily from the Victorian period. The commercial area is centered on Main Street in the southern part of the Historic District with the county courthouse roughly at its center; residential areas are located on the hill to the west and in the northern arm of the district.

Commercial buildings in the Towanda District (photos #9, 16, 20, 22) are generally three stories in height and of brick construction. They are placed directly on the sidewalks and are joined in the central business district by a few larger commercial structures like the Hale Opera House (photo #18). The several large churches similarly front on the sidewalk (photos #19, 21). Only the Bradford County Courthouse is set in an open courtyard. The Courthouse and the Episcopal Church are the notable stone structures in the district.

Residential structures are divided between brick and frame construction, and are less closely sited. A few of the older houses front directly on the sidewalk, but most early houses have small front yards (photos 3 & 4), and larger dwellings are often set in more extensive lawns. In the Victorian neighborhoods (photo #23), open space becomes the norm, with the mansion scale buildings often having grounds of one acre or more. The later houses are more often of frame construction, reflecting the region's lumbering industry.

While three buildings survive in the district from around 1815, only one, the house of town founder William Means, 110 Bridge Street (photo #1), possesses notable architectural value. Built in 1816, this frame Federal three-bay structure has a dentiled cornice, window heads decorated with a swag and garland motif, a round topped second story window with graceful curvilinear muntins, and a porch supported by fluted Ionic columns. The entrance has sidelights and transom with slender Ionic columns immediately flanking the paneled door. The Means house was moved half a block in 1885, but pictorial evidence shows that its integrity is intact.

United States Department of the Interior
National Park Service

National Register of Historic Places Continuation Sheet

Towanda Historic District

Section number 7 Page 2

The Towanda district has a rich variety of Greek Revival houses. The earliest definitely dated example is the Towanda Academy of 1835 at 514 State Street (photo #2). Built of common bond brick, this small building features three brick Doric pilasters on its facade topped by a dentiled frieze and projecting cornice. More ornate is the Baird House at 100 River Street, c. 1835 (photo #3), which is also common bond brick. It has two Ionic columned porches, geometric cast iron grills over the frieze windows, and a dentiled cornice supported by small, pendant brackets. With the frame M.C. Mercur house, 14 Second Street, c. 1835 (photo #4), the full-blown temple-form house with massive two story fluted Ionic columns appears in the District. Other features of this house are a raised porch, which combines with the elevation of the lot above street level to make this facade truly impressive, and an ornate entrance featuring four engaged Ionic columns, sidelights and transom, and a paneled door. The Dr. Samuel Huston house at 109 York Avenue, c. 1835 (photo #5), is a temple-form cottage with symmetrical wings. This frame building has Doric pilasters, a recessed porch with square Doric columns, and bracketed eaves.

Later examples of Greek Revival include the Ulysses Mercur house of 1851, 208 Third Street (photo #6), a frame building with two story pilastered corners whose Doric capitals are embellished with an egg-and-dart pattern; a massive frieze and dentiled cornice with iron window grilles define the roofline. The full-width porch is carried by Ionic fluted columns, the entrance surround is massive, and the window heads have ornate curved appliques. The later James Macfarlane house at 21 Main Street, c. 1858 (photo #7), begins to adopt features of the then nationally prevalent Italianate style, including extra-wide eaves, square plan and extensive bracketing, while retaining the iron frieze grilles and the massive pilastered and corniced entrance treatment of the Greek Revival house.

The district also contains a plethora of more modest Greek Revival houses (photo #8), many with the facing gable with or without a wing configuration. These are concentrated in the North Main/William Street area, although examples are present in other neighborhoods.

A number of Gothic Revival houses of high quality are present in the district. The earliest is the brick David Cash house of 1845, 302 Third Street (photo #10), a large structure with three steep Gothic gables at attic level, embellished with ornate vergeboards, and a large double second story window in a lancet shaped arch above the triple arched entrance. A full porch is supported by trefoil columns and features elongated Tudor arches and a projecting center bay. The Presbyterian Church of 1855, 5 Court Street, is a tall, narrow brick structure with a central crenellated tower, lancet windows, stylized buttresses and elaborate brick corbeling. A similarly styled brick store building a block away at 300 Main Street, c. 1855, features upper windows in lancet shaped arches, corbeled brickwork, and retains one of its two original storefronts. The frame Mahlon Mercur house of 1857, 200 Chestnut Street (photo #11), has triple Gothic dormers, carved vergeboards and a large double window in a lancet shaped opening on its side face; many of the windows are triangular paned Tudor types. The frame Ethan Smith house at 10 York Street, c. 1867, has only one central peaked dormer, again with a double window in a single lancet-shaped opening. Its vergeboards are more in a Carpenter Gothic mode, and a three sided bay with Tudor-arched openings protects its entrance.

United States Department of the Interior
National Park Service

National Register of Historic Places Continuation Sheet

Towanda Historic District

Section number 7 Page 3

Finally, SS Peter and Paul Church represents a dignified strain of Gothic Revival that is related to the Presbyterian Church in its simplicity. Built in 1869-1879 at 1 Third Street, its main decorative feature is light colored stone highlights, which contrast with the brickwork of the walls. Window hoods, buttresses and the main entrance are all embellished with light colored stone.

While Italianate is heavily represented in the business district, relatively few houses were built in this style. The E. Ashmun Parsons House, 304 York Avenue, c. 1867 (photo #13), features the characteristic corner tower, heavily pilastered and bracketed, and bracketed eaves; several windows have unusual projecting roofs above, supported by bracketing. The Edward Overton, Jr. house, 305 York Avenue, c. 1873 (photo #14), has a hipped roof with a facing gable at the front, supported by brackets. Heavy window hoods and a powerful bracketed surround to the main door, along with a highly embellished porch, complete the treatment. There are a large number of simple Italianate commercial buildings and parts of the downtown benefit from a number of adjacent Italianate structures, giving the viewer a strong sense of visual unity (photo #9).

One reason for the relative absence of the Italianate style was the pervasiveness of the Greek Revival which continued to exert a strong influence on architectural form to the end of the 19th Century resulting in a mid-century vernacular form that was popular from the late 1860's to the 1890's (photo #15). These two-story structures are scattered throughout the Victorian era neighborhoods and exhibit the following features: square shape, usually with a rear wing or ell, low hipped roof with exaggerated overhang, plain frieze and narrow end boards, 2/2 or 1/1 windows, often with segmental arched hoodmolds and/or paired windows, Greek Revival entry with transom and side lights. Often these mid-century vernacular examples have front and/or side porches with strong Italianate detailing.

The Second Empire style is represented by several good buildings within the district. A notable commercial example is 416 Main Street, c. 1880 (photo #16), a four story building with fish-scale slate on the face of the Mansard roof, elaborate fourth-floor window treatment and a heavily bracketed cornice. A frame house at 311 York Avenue (photo #17), which was built around 1874 by local contractor S.W. Little, shares the same slatework. It is marked by a very strong cornice atop the Mansard and a pilastered entrance surround.

A number of district buildings are in the Romanesque Revival style. The Hale Opera House at 601 Main Street, 1886 (photo #18), built by Coddington & Hale, is a four story brick structure which combines the round arches and ascending organization of the Richardsonian Romanesque with some Queen Anne detailing. The Episcopal Church, 1 Main Street, c. 1889 (photo #19), combines the blunt stonework and conical towers of the Romanesque with Gothic features. Built in 1888 at 428 Main Street, the brick Citizens National Bank building (photo #20) features an octagonal corner tower with stone highlights and terra-cotta decorative panels; ground floor treatment features carved stone arches springing from engaged triple marble columns. The Methodist Episcopal Church at 105 Main Street, c. 1890 (photo #21), is also brick with stone detailing executed in limestone. A tower frames each corner of the facade; stone is used for window hoods and the cornice treatment, while the arched entrances spring from engaged columns. A large brick house at 108 Chestnut Street, c. 1891, also mixes stone window hoods into its facade; much of its third floor treatment adds shingle-style elements.

United States Department of the Interior
National Park Service

National Register of Historic Places Continuation Sheet

Towanda Historic District

Section number 7 Page 4

An unusual commercial building, the Kingsbury/Chamberlain building of 1887 at 322 Main Street (photo #22), has been the home of the local Masonic Lodge since its erection. This Eclectic structure is executed in light colored brick, with extensive polychrome brick Victorian Gothic embellishment. The window hoods and cornice reflect an Eastlake influence, and the stone elements all have carved decoration.

Queen Anne houses represent one of the main elements in the Towanda district. The brick house at 101 York Avenue, c. 1880, displays the characteristic corbeled chimney, rambling plan and ornately spindled porches of the style. The frame Dan Turner house, 217 York Avenue, 1897 (photo #23), displays varied wall treatment, twin gables and very elaborate spindled porches, including a porte-cochere. The frame 301 York Avenue, c. 1892 (photo #23), displays some classically derived details, including a third story Palladian window and Tuscan order porch columns. The wall treatment is complex, and a corner octagonal tower is featured. The George Decker House, 118 York Avenue, 1897 (photo #24), is a frame Free Classic variant. Paired Ionic columns support the porch and porte cochere, and the octagonal corner tower has a swag and garland motif below its cornice, which is dentiled to match the main cornice. An unusual second story porch has a round arch supported by very short columns, and the attic window is a multi-part bay topped by a broken pediment.

A few houses display Stick Style influences, but only the Albert Long house (302 Second Street, 1884) qualifies as a true example. Important features include extensive stickwork bracketing, wall surfaces with diagonal, vertical or horizontal wood siding, and an unusual bay with central chimney, triangular attic windows and S-curved cutaways just below the attic gable end.

Perhaps the most unusual of Towanda's buildings is the Flemish Renaissance Revival public library at 106 Main Street (photo #25). Donated to the town in 1897 by Frank Welles, this brick 1 1/2 story building has two fanciful stepped gables with lacy spires and finial. A tiny oval window in the main gable is framed by terra-cotta cherubim. The steep slate roof has several tiny decorative gables with peaked, bell-curved roofs. Corners have corbeled quoins, and the foundation takes a battered shape.

Finally, the Bradford County Courthouse (National Register, 1986 photo #27) of 1897 is a monumental structure in the Beaux Arts Classical style. The pedimented street facade has massive pilasters above a rusticated base; an anthemion surrounded by olive branches proclaims "Justice, Law, Mercy" in the pediment. A tall octagonal dome rises 70 feet above first floor level, and is roofed with brown-green glazed terra-cotta tiles. The rear block of the building is rough cut limestone, comparatively unembellished, and the interior is both remarkable and well preserved.

The Riverside Cemetery, located east of William Street and south of Walnut Street, is the one contributing site in the district. It contains gravestones interspersed with monuments from the early nineteenth century to the late twentieth century. Most burials date to the nineteenth century. David Wilmot is buried in this cemetery.

**United States Department of the Interior
National Park Service**

**National Register of Historic Places
Continuation Sheet**

Towanda Historic District

Section number 7 Page 5

The Towanda Historic District displays a high degree of integrity. Only 8.4% of the 483 buildings are non-contributing, and many of these are historic structures which have lost their architectural detailing to poorly planned renovations (photo #28); these buildings still have their integrity of siting and massing, and thus detract less from the district's "feel" than modern intrusions. Route 6 has had its deleterious effect on Towanda, primarily through congestion and grime, and most of the modern buildings in the district are connected to automotive use, like gas stations and garages. Some non-contributing buildings are business district replacements for buildings lost to fires or demolition (photo #29). Most of the non-contributing structures are located on Main Street. In age, some examples date from the interwar period and have lost their integrity due to alteration (photo #30), but most are from the 1950's and 1960's.

While some blocks have been seriously impacted by intrusions (photo #29), the majority of the business district still maintains its historic facade-line and density. In the residential areas of Towanda, non-contributing structures are almost unknown. Residential blocks with near-perfect integrity are the norm, and a wave of sensitive restoration efforts within the district in recent years bodes well for Towanda's preservation future.

8. Statement of Significance

Certifying official has considered the significance of this property in relation to other properties:

nationally statewide locally

Applicable National Register Criteria A B C D

Criteria Considerations (Exceptions) A B C D E F G

Areas of Significance (enter categories from instructions)

ARCHITECTURE

COMMERCE

POLITICS/GOVERNMENT

Period of Significance

1812 - 1940

Significant Dates

N/A

Cultural Affiliation

N/A

Significant Person

Wilmot, David

Architect/Builder

N/A

State significance of property, and justify criteria, criteria considerations, and areas and periods of significance noted above.

SEE CONTINUATION SHEET

See continuation sheet

9. Major Bibliographical References

SEE CONTINUATION SHEET

Previous documentation on file (NPS):

- preliminary determination of individual listing (36 CFR 67) has been requested
- previously listed in the National Register
- previously determined eligible by the National Register
- designated a National Historic Landmark
- recorded by Historic American Buildings Survey # _____
- recorded by Historic American Engineering Record # _____

See continuation sheet

Primary location of additional data:

- State historic preservation office
- Other State agency
- Federal agency
- Local government
- University
- Other

Specify repository: _____

10. Geographical Data

Acreage of property 145

UTM References

A

1	8
---	---

3	7	9	5	5	0
---	---	---	---	---	---

4	6	2	6	2	7	0
---	---	---	---	---	---	---

C

1	8
---	---

3	8	0	1	0	0
---	---	---	---	---	---

4	6	2	4	3	4	0
---	---	---	---	---	---	---

B

1	8
---	---

3	8	0	1	2	0
---	---	---	---	---	---

4	6	2	5	9	5	0
---	---	---	---	---	---	---

D

1	8
---	---

3	7	9	4	3	0
---	---	---	---	---	---

4	6	2	4	4	8	0
---	---	---	---	---	---	---

See continuation sheet

Verbal Boundary Description

See continuation sheet

Boundary Justification

See continuation sheet

11. Form Prepared By

name/title Doug McMinn
organization Thomas R. Deans Associates date January 28, 1992
street & number 28 North Front Street telephone (717) 742-9684
city or town Milton state PA zip code 17847

**United States Department of the Interior
National Park Service****National Register of Historic Places
Continuation Sheet**

Towanda Historic District

Section number 8 Page 1

The Towanda Historic District contains the commercial and primary residential neighborhoods of Towanda, which is the County seat of Bradford County. The town was the most important commercial center in the County throughout the 19th Century, and contains the longtime homes of nationally significant political figures David Wilmot and Ulysses Mercur. Towanda's collection of buildings represents the broadest selection of building types and styles within the County: the earliest date from the second decade of the 19th Century, and the resources run through the era of the Great Depression. Towanda's architecture reflects the town's status as a center of government and manufacturing.

Founded by William Means, who settled on the site around 1786, Towanda was located on the wagon road which ran north to Tioga (later Athens) and on the North Branch of the Susquehanna River, which provided access to markets both downstream and upstream. Means himself was a boatman by trade; he soon added a distillery, tavern and ferry to his little empire. When Bradford County was organized in 1812, Means was influential in locating the County seat in Meansville, as the town was then known; court was held in his tavern until the courthouse was finished in 1816. By that year, five taverns were licensed in the village, several merchants were trading there, a tannery had been built, and a number of grist mills and sawmills were operating in the vicinity. By 1825, the population was 225, and in 1828, the Borough of Towanda was incorporated.

In 1832, Towanda possessed 63 houses and more than 30 tradesmen. Two doctors and seven lawyers served the needs of the town, which had become the primary market and service center for the surrounding farms. A bridge across the river was completed that year, and the Towanda Academy (photo #2) at 314 State Street was founded in 1835. Among its teachers were Henry Hoyt, later Pennsylvania Governor, and O.H. Platt, who was elected to the U.S. Senate from Connecticut. Stephen Foster, the beloved songwriter, studied at the Academy in the winter and spring terms of 1840.

The extension of the North Branch of the Pennsylvania Canal to the New York line was begun in 1836. Lack of funds caused suspension of work in the mid-1840's, but the channel was finally completed in 1854, connecting Towanda with the New York State canal system and improving access to markets for Towanda goods. Commercial and industrial growth mushroomed; from a population of approximately 300 in 1830, the town had grown to 912 in 1840, and increased slightly to 1,175 in 1850. In 1847, a disastrous fire consumed the Courthouse and two business blocks, but the lost buildings were quickly replaced. The construction of the 17 mile Barclay Railroad in 1854 supplied the town with unlimited coal, and the pace of industrial development quickened. In 1858, local interests purchased the canal from the state and began work on the Pennsylvania and New York Railroad. Population had increased by about a third in 1860, reaching 1,622.

The Pennsylvania and New York track reached Waverly, New York, in November 1867, and completed the connection with Wilkes Barre in September 1869. Manufacturing operations were expanded or founded to utilize this easy access to distant markets. By 1870, population increased by half to 2,696. The Sullivan and Erie Railroad which served the Sullivan County coal fields, was partially opened in 1871, and heavy manufacturing and ironworking operations added to the town's industrial strength. Population leapt again to 3,814 in 1880. Coal gave way to lumbering in the vicinity, but new factories were still springing up, increasing population to 4,169 in 1890. In 1900,

**United States Department of the Interior
National Park Service****National Register of Historic Places
Continuation Sheet**

Towanda Historic District

Section number 8 Page 2

Towanda's population peaked at 4,663; by 1910, it had fallen to 4,281, then held steady through the onset of the Great Depression. Manufacturing was in a gradual decline as well. Elmira and Binghamton to the north, with better east-west transportation links, became the economic magnets within the region. Sayre, with its railroad shops, had some 600 more inhabitants than Towanda by 1900, and by 1920 almost doubled Towanda's population. By 1920, Athens had also surpassed it.

Founder William Means was responsible for setting his village off on a commercial course. Means had connections with Wilkes Barre merchants from his boating enterprises, particularly with Matthias Hollenback. The fine Federal house at 110 Bridge Street (Photo #1) which was built in 1816 by Peter Egner of Northumberland (builder of the first courthouse) is representative of Means' success and status. Henry Spalding was one of the merchants who settled in the village's early days; Spalding operated a store and tavern in the building still standing at 1 York Avenue, which was built in 1812. Joseph Montanye, who became the dean of Towanda merchants, was in business on his own by 1826. His general merchandise store building still standing at 317 Main was one of the first brick buildings in Towanda, replacing a structure burned in the 1847 fire. Montanye's house stands at 20 Main Street. C.S. Russell, was in business by 1826, selling hardware, and was later a partner in the large Coddling and Russell firm. Russell's house stands at 512 Third Street.

The Borough's first bank was established in 1834, located at 209-11 Main Street. Joseph Kingsbury, bookseller, was established in 1837; his house is at 24 Main Street. Colonel John Means, grandson of the founder, lived in the Means' house and was the "Jacob Astor" of Towanda, having inherited much of the land in the downtown. He was also contractor for the North Branch Canal and later the Williamsport and Elmira Railroad. Means was a partner in the Means Rockwell & Co. Foundry, director of Eureka Mower, and manager and president of the Towanda Iron nailworks. He also was a builder/developer of downtown property; in 1885, he moved the Means' house to its present location at 100 Bridge Street. Another notable commercial figure of the 1840's was Eleazar Fox, grandson of Rudolph Fox, Bradford County's first settler. Fox formed a partnership first with Joseph Montanye, then with Mahlon Mercur; by 1876, he was president of the Citizens National Bank. Fox's house is at 15 York Avenue.

Mahlon Mercur was a key figure in Towanda's commercial development. Born in the town, he attended the Academy and built the first planing mill. Mercur masterminded the Pennsylvania and New York Railroad, which laid its track on the towpath of the canal. The railroad was responsible for the continued commercial growth of the town, succeeding the canal in connecting Towanda with national markets. Mercur was also a developer of downtown real estate and ran his own bank. Mahlon Mercur built one of the significant houses in the district at 217 Chestnut (photo #11) around 1857. Later, Mercur was president of the Sullivan and Erie Railroad.

**United States Department of the Interior
National Park Service****National Register of Historic Places
Continuation Sheet**

Towanda Historic District

Section number 8 Page 3

Lawyer Edward Overton, who founded the Barclay Railroad and owned the coal deposits which the railroad exploited, was another key figure in commercial growth. His house is at 19 Main Street; the house next door, which was built around 1858 for son-in-law James Macfarlane (21 Main St, photo #7) is one of the district's notable houses. Macfarlane was a lawyer who was also trained as an engineer. He managed the Barclay mines and wrote a book Coal Fields of America, published in 1873, that was a standard text on the subject; Macfarlane was also a coal mining consultant who worked throughout the east. Attorney David Cash was also involved in the Barclay coal lands; his mansion at 302 Third St. (1845, photo #10) is one of the district's architectural jewels.

J.O. Frost (10 N. Main St.) started his furniture store in 1865; by 1870 it had grown into a furniture factory which soon became one of the town's biggest employers. Humphrey Bros. and Tracy, shoe and boot manufacturers, began operations in 1871. James Humphrey's house is at 302 Second St., Charles Tracy's at 101 York Avenue. The business district boasted a number of hotels. Only the American at 1 Bridge St. (c.1865), currently an apartment house, is extant. Prominent merchants connected to surviving buildings included R.M. Welles, dealer in agricultural implements (house, 227 Poplar) druggist H.C. Porter (house 361 York Avenue, store 323 Main) and butcher George Neal (house 105 York Ave.) Elijah Parsons (house 22 William St., photo #8) and his son E. Ashmun (house 304 York Avenue, photo #13) owned and edited the Bradford Argus newspaper, while O.D. Goodenough (house 1 Mix St.) edited the Towanda Business Item.

The major new industry begun in the 1880's was the James H. Hawes toy factory, located just north of the district in a neighborhood called Toytown. The Hawes firm became one of the country's largest; William Hawes, James' son and successor, lived in the house at 363 York Ave. A new bank, the Citizens National (founded 1876) built a new building at 428 Main Street in 1886 (photo #20) designed by the architects Pierce and Dockstader of Elmira. The Hale Opera House of 1886 (601 Main St., photo # 19), the Episcopal Church at 1 Main Street (c. 1889, photo # 19) and the charming town library of 1897 (106 Main St., photo #25) expressed the civic pride of the town, which reached its peak population in 1900.

Carl V.S. Patterson, who invented the fluorescent X-ray screen, provided a late burst of industrial development with his Patterson Screen Co. Patterson lived in the house at 9 Huston St., and his partner Frederic Reuter lived at 309 York Ave. Patterson Screen was the forerunner of the large DuPont and GTE factories, which account for much of the town's current employment.

A large number of significant political figures are associated with the Towanda District. John LaPorte, son of an Azilum frenchman, was elected to the US Congress in 1833, and was also a substantial business figure (LaPorte and Mason Bank, 209-11 Main St). David Wilmot, Senator and Congressman, moved to Towanda in 1834 and lived there until his death in 1868. Serving in the House from 1845-1851, he was the author of the Wilmot Proviso, which was intended to limit the expansion of slavery. A foe of James Buchanan and a famous orator, Wilmot was a founder of the Republican Party in Pennsylvania and a major figure in its national councils. He was Judge of the 13th District and was defeated by William Packer in a bid for governor in 1857. Elected to the Senate in 1861, he resigned in 1863 due to ill health; Wilmot served as Judge of the US Court of Claims until his death. He lived at 227 Poplar (photo #12) from 1850 until 1867, when he moved to 207 York Avenue.

**United States Department of the Interior
National Park Service****National Register of Historic Places
Continuation Sheet**

Towanda Historic District

Section number 8 Page 4

Ulysses Mercur, David Wilmot's law partner and brother of Mahlon Mercur, was Towanda's other nationally significant political figure. Born in Towanda in 1818, he read law with Edward Overton. Where Wilmot was known for his native oratorical skill and expansive personality, Mercur was noted for his diligent study of technical matters within the law and a rigidly conservative personality. Like Wilmot, he was a founding Republican; elected to the US House in 1864, he served three terms. His primary contribution in Washington was sponsorship of the tariff law exempting coffee and tea, making both more affordable for the working class. Mercur joined the Pennsylvania Supreme Court in 1872 and became its Chief Justice in 1883. As a justice, he was considered rigid and old fashioned, unwilling to alter the precepts which he learned in his youth. Ulysses Mercur lived at 203 Third St. (photo #6) from 1851 until his death in 1887.

Other significant politicians include William Elwell, who arrived in 1833, was a State Representative in 1841-42 and lived at 106 River St. from 1854 to 1863. He became President Judge of the Columbia District in 1863 and moved then to Bloomsburg. Paul Dudley Morrow whose house is at 512 Third St., was a Judge in the Court of Claims and in 1874 President Judge of the Bradford District. Edward Overton Jr. was elected to Congress in 1877; his house is at 305 York Ave. (photo #14) Joseph Powell was elected to the Congress in 1874, and lived at 215 York Ave. William T. Davies was first a State Senator, then Pennsylvania Lieutenant Governor from 1887-91; his house is at 201 Second St. James Coddling (house at 213 Pine St.) was elected to Congress in 1897. Finally, George Kipp (302 Third St) was elected to the House of Representatives in 1907 and in 1911, dying in office during his second term.

The collection of architecture in the Towanda District is by far the largest and most varied in Bradford County. In the area of Greek Revival, it is rivaled only by Athens in quality, although Athens has many fewer examples. The Gothic Revival buildings constitute one of the best collections in north-central Pennsylvania. In the styles of the Victorian era, Troy and, to a lesser extent, Canton have examples of similar quality, but fall short in quantity. The Towanda business district contains an unparalleled collection of post Civil War buildings in the County. Again, Canton and Troy possess valuable small collections of such buildings; such large examples as the Hale Opera House (photo #18) and the Courthouse (photo #27) are without peer in the County.

A number of builders and architects are associated with buildings located in the district. Peter Egner built the first courthouse and the still extant Means house in 1816 (photo #1). James K. Vaughn was the architect of 304 York Avenue (photo #13), and James Fausey built 308 York Avenue, both in the late 1860's. The architectural firm of Fleming & Hollon moved their office from Philadelphia to Towanda at about that time. They designed a school and a bank in Towanda, both since razed, and a mansion for H.E. Packer at Jim Thorpe. J.E. Fleming lived at 516 Second Street. H.L. Lamoreaux designed the house at 201 Second Street in the 1870's; while S.W. Little built 311 York (photo #17) and William Kingsley built 305 Second during that decade. The architects Pierce and Dockstader of Elmira designed the Citizens National Bank in 1888 (photo #20) and a number of houses on York Avenue; Contractor J.H. Webb was associated with the Pierce building projects in the 1890's. The local builders Coddling and Hale erected the Hale Opera House (photo #18, 1886.) George Decker built his own house at 118 York (c 1897, (photo #24) and others, while both Thomas Bradley and N.W. King built several extent houses in the north end of the district in the 1890's. Well-known Cleveland, Ohio, architects Israel Lehman and Theodore Schmitt designed the County Courthouse (National Register, 1986 photo #27) in 1896, while W.B. Camp designed several extant

**United States Department of the Interior
National Park Service**

**National Register of Historic Places
Continuation Sheet**

Towanda Historic District

Section number 8 Page 5

houses in the 1890's. The firm of Darmonds, Ashmead and Bickley designed the Patterson House in 1918, and Patrick Frawley and a Mr. Vargeson were builders of the early twentieth century whose houses are extant.

In the area of Politics/Government, Towanda produced a large group of significant men which many small cities couldn't match. Senator and Congressman David Wilmot is a figure of national importance as is Ulysses Mercur as Pennsylvania Supreme Court Chief Justice and Congressman. Figures of state significance are James H. Coddling, John LaPorte, Edward Overton, Jr., Joseph Powell, and George Kipp, all members of Congress, and William T. Davies, Lieutenant Governor of Pennsylvania. More subtly, some of these men figured in the foundation of the national and state Republican Party, which dominated state and national politics for fifty years after the Civil War.

Towanda was the commercial hub of Bradford County for most of the 19th century, dominating the manufacturing realms and organizing the railroads which connected Bradford County with the outside world. Athens, though older than Towanda, took a peripheral economic role until the last years of the century. Its large cast-iron bridgeworks and smaller furniture factory provided most of its jobs. Athens' first bank wasn't organized until 1865, and its economic growth was dependent on the Pennsylvania and New York Railroad. Sayre was laid out in 1871, at the junction of the Pennsylvania and New York, the southern Central Railroad and the Geneva and Sayre Railroad. It was a pure railroad town, named after Robert Sayre, the railroad's president. A roundhouse (1873) and large railroad repair shop (1880) put the town on the map. It was incorporated in 1891, and was the largest town in the County by 1900. It rapidly eclipsed Towanda in economic growth although the courthouse and the established manufacturing sector kept Towanda thriving through the onset of the depression.

**United States Department of the Interior
National Park Service**

**National Register of Historic Places
Continuation Sheet**

Towanda Historic District

Section number 9 Page 1

Bradford County Historical Society, The Settler, Volume 13 Number 3, 1975; Volume 22 Number 2, 1984; Volume 26 Number 1, 1988; Volume 26 Number 2, 1988, Towanda, PA.

Bradford County Historical Museum, clipping files.

Craft, History of Bradford County PA, Philadelphia 1878, L.H. Everts and Co.

Geiger, J.V. Reminiscences of Towanda Borough: An Imaginary Walk Through Town As It Appeared 60-65 Years Ago (c. 1838); Unpublished Manuscript, 1903, Bradford County Historical Museum.

Haines, E.B., Historical Sketch of Towanda and Business Review, Williamsport, PA, 1873, Gazette and Bullet Printing House.

Heverly, C.F., History of the Towandas, Towanda, PA 1886, Reporter Journal Printing Co.

Malone, Dumas, editor, Dictionary of American Biography, Volume 12, New York 1933, Charles Scribners Sons, p. 549 (Ulysses Mercur).

Malone, Dumas, editor, Dictionary of American Biography, Volume 20, New York 1933, Charles Scribners Sons, p. 317 (David Wilmot)

MAPS

Nunan, Philip and McCarthy, D., Map of the Borough of Towanda, Bradford County, PA, 1854, Published by Philip Noonan.

Lake, Ames and Davidson, Atlas of Bradford County, 1858, Place of publication and publisher unknown.

Beers, F.W., Sanford, George P. and others, Atlas of Bradford County PA, New York 1869, Published by Beers, Ellis and Soule.

**United States Department of the Interior
National Park Service****National Register of Historic Places
Continuation Sheet**

Towanda Historic District

Section number 10 Page 1**BOUNDARY DESCRIPTION**

Begin at a point on the curb at the south west corner of 601 Main Street; proceed approximately 250 feet east to a point on the western curb of River Street; proceed north approximately 1150 feet to the south curb of Park Street; proceed west approximately 25 feet to a point opposite the east line of Borough Building; proceed approximately 120 feet north to north line of Borough Building; proceed approximately 37 feet west to west line of Borough Building; proceed approximately 120 feet south to south curb of Park Street; proceed west approximately 250 feet to west curb of Main Street; proceed north approximately 180 feet to a point opposite the south line of 213 Main Street; proceed east approximately 200 feet to curb of unnamed alley; proceed north approximately 200 feet to north curb of State Street; proceed east north east approximately 220 feet to west curb of River Street; proceed north approximately 1480 feet to south curb of Chestnut Street; proceed west approximately 280 feet to west curb of William Street; proceed north approximately 450 feet to a point opposite the south line of Riverside Cemetery; proceed east approximately 300 feet to the east line of Riverside Cemetery; proceed north approximately 1400 feet to south curb of Locust Avenue; proceed west south west approximately 260 feet to west curb of William Street; proceed north north west approximately 340 feet to north line of 307 William Street; proceed west south west approximately 88 feet to the west line of 307 William Street; proceed south south east approximately 40 feet to north line of 15 Locust Street; proceed west south west approximately 100 feet to west line of 15 Locust Street; proceed south south east approximately 290 feet to south curb of Locust Avenue; proceed west south west approximately 220 feet to point opposite east line of 25 Locust Avenue; proceed north north west approximately 250 feet to north line of 25 Locust Avenue; proceed west south west approximately 80 feet to east curb of Cherry Street; proceed south south east approximately 240 feet to south curb of Locust Avenue; proceed west south west approximately 440 feet to west curb of York Avenue; proceed north north west approximately 160 feet to point opposite south line of 312 York Avenue; proceed east north east approximately 220 feet to east line of 312 York Avenue; proceed north north west approximately 470 feet to south curb of unnamed alley; proceed west south west approximately 210 feet to west curb of York Avenue; proceed north north west approximately 1160 feet to north line of 375 York Avenue; proceed west south west approximately 210 feet to west line of 375 York Avenue; proceed south south east approximately 530 feet to north curb of Oak Street; proceed east north east approximately 60 feet to point opposite rear line of 361 York Avenue; proceed south south east approximately 980 feet to south curb of Ann Street; proceed west south west approximately 100 feet to the west line of 311 York Avenue; proceed south south east approximately 1020 feet to north line of 207 York Avenue; proceed west south west approximately 390 feet to east curb of Watt Street; proceed south south east approximately 280 feet to south curb of Huston Street; proceed west south west approximately 150 feet to east line of 22 Huston Street; proceed north north west approximately 190 feet to north line of 22 Huston Street; proceed west south west approximately 70 feet to east line of 24 Huston Street; proceed west north west approximately 100 feet to north line of 24 Huston Street; proceed west south west approximately 120 feet to east curb of Fourth Street; proceed south south east approximately 900 feet to south line of 217 Chestnut Street; proceed east north east approximately 260 feet to east line of 209 Chestnut Street; proceed east approximately 380 feet to east line of 13 North Third Street; proceed south approximately 20 feet; to the south line of 107 Chestnut Street; proceed east approximately 75 feet to the east line of 107 Chestnut Street; proceed south east approximately 25 feet to the south line of 105 Chestnut Street; proceed east approximately 200 feet to the west line of 7 York Avenue; proceed south south east approximately 137 feet to the north curb of Plank Road; proceed east south east

**United States Department of the Interior
National Park Service****National Register of Historic Places
Continuation Sheet**

Towanda Historic District

Section number 10 Page 2

approximately 262 feet to the east curb of Main Street; proceed south approximately 220 feet to point opposite south curb of Lombard Street; proceed west approximately 700 feet to east curb of Third Street; proceed south approximately 150 feet to south line of Catholic Church; proceed east approximately 160 feet to east line of unnamed alley; proceed south approximately 360 feet to south curb of Maple Street; proceed east approximately 70 feet to west line of 102 Second Street; proceed south approximately 160 feet to south line of 104 Second Street; proceed east approximately 60 feet to west line of 108 Second Street; proceed south approximately 260 feet to south curb of State Street; proceed west south west approximately 200 feet to west curb of Third Street; proceed north approximately 390 feet to north line of 106 Third Street; proceed west approximately 370 feet to west curb of Fourth Street; proceed north approximately 20 feet to north line of 110 Fourth Street; proceed west south west approximately 220 feet to west line of 110 Fourth Street; proceed south south east approximately 160 feet to north line of 326 State Street; proceed west south west approximately 160 feet to east curb of Henry Street; proceed south approximately 190 feet to south curb of State Street; proceed west approximately 20 feet to west line of 228 State Street; proceed south approximately 220 feet to south curb of Poplar Street; proceed west approximately 80 feet to west line of 233 Poplar Street; proceed south approximately 60 feet to south line of 233 Poplar Street; proceed east approximately 480 feet to west line of 304 Pine Street; proceed south approximately 160 feet to south curb of Pine Street; proceed west north west approximately 380 feet to East curb of Fifth Street; proceed south approximately 500 feet to north curb of Bridge Street; proceed east north east approximately 320 feet to west curb of Fourth Street; proceed east approximately 200 feet to point opposite the west line of 500 Third Street; proceed south approximately 710 feet to north curb of Elizabeth Street; proceed east approximately 490 feet to west curb of Second Street; proceed north approximately 413 feet to a point opposite the south line at 507 Second Street; proceed east approximately 406 feet to the east curb of Main Street; proceed south 150 feet to place of beginning.

BOUNDARY JUSTIFICATION

At the district's southern edge, a profusion of modern properties and a lack of potentially contributing structures in the Main Street axis defines the boundary. In the southern residential neighborhood just uphill, the boundary was set due to a diminishment of architecturally valuable resources. In the vicinity of Bridge, Pine, Poplar and State streets on the western edge of southern mass of the district, historic resources were excluded due to a lack of architectural worth. The "waist" of the district's western boundary (Ward and Lombard Streets, and Plank Road) was caused by modern intrusions and empty space. The boundary on Fourth Street in the Chestnut, Huston area, and the placing of the boundary on rear property lines along York Avenue was designed to exclude post-World War Two residential development. Beyond #375 York Avenue in the northern arm of the district, modern strip development begins. Similarly, the east side of York Avenue north of #326 York consists of recent buildings. The area beyond the rear property lines on Locust Avenue consists of empty space or buildings lacking architectural value. The eastern boundary varies only to exclude intrusive buildings and open space in the Chestnut Street vicinity and large modern commercial buildings between State and Park Streets.

**United States Department of the Interior
National Park Service**

**National Register of Historic Places
Continuation Sheet**

Towanda Historic District

Section number Photographs Page 1

- | | | |
|----|------------------------------------|---------------------------|
| 1. | 110 Bridge | Towanda Historic District |
| 2. | Towanda, PA | |
| 3. | Zubler, James | |
| 4. | 1991 | |
| 5. | Bradford County Historical Society | |
| 6. | North | |
| 7. | Photo #1 | |

Note: Item numbers 2-5, as they appear above, are the same for all of the following photos and, therefore, are not included in the photographic listing below.

- | | | |
|----|-----------------|---------------------------|
| 1. | 314 State | Towanda Historic District |
| 6. | North | |
| 7. | Photo #2 | |
| 1. | 106 River | Towanda Historic District |
| 6. | West | |
| 7. | Photo #3 | |
| 1. | 14 Second | Towanda Historic District |
| 6. | West | |
| 7. | Photo #4 | |
| 1. | 109 York | Towanda Historic District |
| 6. | West South West | |
| 7. | Photo #5 | |
| 1. | 208 Third | Towanda Historic District |
| 6. | West | |
| 7. | Photo #6 | |
| 1. | 21 Main | Towanda Historic District |
| 6. | East | |
| 7. | Photo #7 | |
| 1. | 22 William | Towanda Historic District |
| 6. | East | |
| 7. | Photo #8 | |
| 1. | 401-429 Main | Towanda Historic District |
| 6. | Southeast | |
| 7. | Photo #9 | |

**United States Department of the Interior
National Park Service**

**National Register of Historic Places
Continuation Sheet**

Towanda Historic District

Section number Photograph Page 2

- | | | |
|----|-----------------|---------------------------|
| 1. | 302 Third | Towanda Historic District |
| 6. | West | |
| 7. | Photo #10 | |
| 1. | 200 Chestnut | Towanda Historic District |
| 6. | Northwest | |
| 7. | Photo #11 | |
| 1. | 227 Poplar | Towanda Historic District |
| 6. | East | |
| 7. | Photo #12 | |
| 1. | 304 York | Towanda Historic District |
| 6. | East North East | |
| 7. | Photo #13 | |
| 1. | 305 York | Towanda Historic District |
| 6. | West South West | |
| 7. | Photo #14 | |
| 1. | 308 York | Towanda Historic District |
| 6. | East North East | |
| 7. | Photo #15 | |
| 1. | 416 Main | Towanda Historic District |
| 6. | West | |
| 7. | Photo #16 | |
| 1. | 311 York | Towanda Historic District |
| 6. | Southwest | |
| 7. | Photo #17 | |
| 1. | 601 Main | Towanda Historic District |
| 6. | Southeast | |
| 7. | Photo #18 | |
| 1. | 1 Main | Towanda Historic District |
| 6. | Southeast | |
| 7. | Photo #19 | |
| 1. | 428 Main | Towanda Historic District |
| 6. | West North West | |
| 7. | Photo #20 | |

**United States Department of the Interior
National Park Service**

**National Register of Historic Places
Continuation Sheet**

Towanda Historic District

Section number Photographs **Page** 3

- | | | |
|----|--------------------------------|---------------------------|
| 1. | 105 Main | Towanda Historic District |
| 6. | East | |
| 7. | Photo #21 | |
| 1. | 322 Main | Towanda Historic District |
| 6. | West North West | |
| 7. | Photo #22 | |
| 1. | 217 and 301 York | Towanda Historic District |
| 6. | Northwest | |
| 7. | Photo #23 | |
| 1. | 118 York | Towanda Historic District |
| 6. | East North East | |
| 7. | Photo #24 | |
| 1. | 106 Main | Towanda Historic District |
| 6. | West South West | |
| 7. | Photo #25 | |
| 1. | Bridge - 400 Block | Towanda Historic District |
| 6. | Northeast | |
| 7. | Photo #26 | |
| 1. | Courthouse | Towanda Historic District |
| 6. | East South East | |
| 7. | Photo #27 | |
| 1. | Intersection of State and Main | Towanda Historic District |
| 6. | Southwest | |
| 7. | Photo #28 | |
| 1. | Main - 400 Block, even side | Towanda Historic District |
| 6. | North North West | |
| 7. | Photo #29 | |
| 1. | Main - 500 Block, odd side | Towanda Historic District |
| 6. | Northeast | |
| 7. | Photo #30 | |

TOWANDA HISTORIC DISTRICT

River Street

Address	No. of Stories	Construction Material	Roof Design	Architectural Style	Date	Outstanding Features	Cont. or NC
116	1	Brick/Frame	Side gable	Ranch	c 1955		NC
108	2	Frame	Side gable	Vern. Victorian	c 1854		C
106	2	Frame	Hipped	Greek Revival	c 1835	Entrance with cornice, paired brackets and pilasters with attic windows, ornate grills, cornice	C
100	3	Brick	Hipped, two rear wings	Greek Revival	c 1835	Columned and bracketed porch with dentilated cornice, entry with transom and sidelights, ionic columns	C
36	3	Brick	Hipped	Italianate	c 1870	Stained glass window, arched brick surrounds	C
9	2	Frame	Side gable	Greek Revival	c 1845	Pedimented gable	C
3	2	Frame	Side gable	Greek Revival	c 1845	Pedimented gable	C
1	1	Frame	Side gable	Ranch	1991		NC

TOWANDA HISTORIC DISTRICT

North River Street

Address	No. of Stories	Construction Material	Roof Design,	Architectural Style	Date	Outstanding Features	Cont. or NC
7	2	Frame	Intersecting gable	Vern. Victorian	c 1885		C
9	2	Frame	Front gable	Vern. Victorian	c 1885	Ornate Italianate porch	C
13	2	Frame	Gable with wing	Vern. Victorian	c 1890	Carpenter Gothic detailing, ornate turned porch with posts, spindles, and fretwork	C

TOWANDA HISTORIC DISTRICT

William Street

Address	No. of Stories	Construction Material	Roof Design	Architectural Style	Date	Outstanding Features	Cont. or NC
2	2	Frame	Front gable	Greek Revival	c 1867		C
4	2	Frame	Front gable	Creek Revival	c 1867		C
6	2	Frame	Side gable	Greek Revival	c 1854	Portico and side porch with dentils and columns, entrance with sidelights and pilasters	C
10	1 1/2	Frame	Gambrel	Dutch Colonial Revival	c 1908	Bay window, decorative patterned brick chimney, paneled door with side lights	C
14	2	Frame	Front gable	Greek Revival	c 1850	Front portico features pilasters, side lights and columns	C
18	1 1/2	Frame	Front gable	Greek Revival	c 1850	Portico with turned posts, door and transom with pilasters 6/6	C
20	2	Frame	Front gable	Greek Revival	c 1850	Pedimented front gable	C
22	2	Frame	Front gable	Greek Revival	c 1850	Wide architrave with wing, porch with sawn balustrade, bevelled columns	C
122	2	Frame	Side gable	Vern. Victorian	c 1867	Exposed rafters under eaves	C
200	2	Frame	Intersecting gable	Vern. Victorian	c 1894	Side porch with turned posts and spindles inset in wing	C
202	1 1/2	Frame	Side gables	Vern. Victorian	c 1890		C
204	2	Frame	Hipped	Mid Century Vernacular	c 1870	Hipped roof, extended eaves	C
206	2	Frame	Hipped	Mid Century Vernacular	c 1870	Hipped roof, wide eaves	C
210	2 1/2	Frame	Front and rear wide gable with wing	Vern. Victorian	c 1870		C
212	1 1/2	Frame	Side gable	Princess Style	c 1894	Decorative shingles in gables, full porch, turned posts	C
101 & 101 1/2	2 1/2	Frame	Hipped with lower gable	Vern. Victorian	c 1875	Double doors with arched transoms, windows 2/2, front porch rebuilt, some double windows	C
111	2	Frame	Front gable	Vern. Victorian	c 1880	Recessed side porch with dentilated porch cornice and turned posts; dentils over window and doors	C

TOWANDA HISTORIC DISTRICT

William Street

Address	No. of Stories	Construction Material	Roof Design	Architectural Style	Date	Outstanding Features	Cont. or NC
113	2	Frame	Front gable	Greek Revival	1867		C
115	2	Frame	Front gable	Greek Revival	1867		C
117	2	Frame	Front gable	Greek Revival	1867		C
119	2	Frame	Front gable	Greek Revival	1867		C
123	2	Frame	Front gable	Vern. Victorian	c 1885		C
135	2	Frame	Front gable	Vern. Victorian	c 1885		C
141	1 1/2	Frame	Front gable	Vern. Victorian	c 1885		NC
143	2		Front gable	Vern. Victorian	c 1885		C
145	2	Brick	Front gable	Vern. Victorian	c 1885	Soldiered brick hood molds over windows and door, decorative iron grills over basement windows	C
147	1 1/2	Frame	Front gable	Vern. Victorian	c 1885		C
201	1 1/2	Frame	Gable	Bungalow	c. 1920		C
207	2	Frame	Gable	Vern. Victorian	c 1890		C
209	2 1/2	Frame	Intersecting gable	Queen Anne	c 1896	Porch with ornate balustrade and spindled frieze, two story projecting bay inset under side gable	C
215	2	Frame	Side gable	Vern. Victorian	c 1895		C
219	2	Frame	Intersecting gable	Vern. Victorian	c 1894	Porch with spindled frieze and balusters, turned posts	C
303	2	Frame	Front gable with wing-	Vern. Victorian	c 1895		C
305	2 1/2	Frame	Side gable	Princess Anne	c 1890	Oversize front gabled dormer front gabled, porch with pedimented entry gable, turned posts and baluster	C
307	2	Frame	Side gable	Bungalow Style	1920		C

TOWANDA HISTORIC DISTRICT

Main Street

Address	No. of Stories	Construction Material	Roof Design	Architectural Style	Date	Outstanding Features	Cont. or NC
524	2	Concrete, Brick	Flat	Commercial	c 1930		C
520-522	3 1/2	Brick	Flat Hipped	Second Empire	c 1875	Arched windows with corbeled brick hoods, projecting oriel window extends from second and third story, projecting gable roofed dormer windows	C
514-518	2	Frame	Flat	Italianate	c 1875	Pressed metal cornice with projecting end brackets	C
512	2 1/2	Brick/Frame	Gable	Vern. Victorian	c 1880		C
510	2	Frame	Flat	Italianate	c 1870		C
508	2	Brick	Flat	Italianate	c 1872		C
506	2	Frame	Flat	Italianate	c 1870		C
504	2	Frame	Flat	Italianate	c 1875		C
502	2	Brick	Flat	Italianate	c 1880	Carrara glass panels	C
500	2	Brick	Flat	Italianate	c 1880		C
428	4	Brick	Pyramidal	Romanesque Revival	1886	Arched stone hood molds above first floor door & windows, triple columns flanking center window and entrance, large 4 story corner tower with bracketed gabled dormers and finials, Bridge Street facade features two corbeled chimneys and arched triple window in front gable	C
426	3	Brick	Flat	Italianate	c 1890	False broken pediment with finials and horizontal brick course below, two projecting brick pilasters framing upper facade with corbeled and canted brick supporting cornice, paired windows with arched soldiered brick hood molds	C
422-418	3	Brick	Flat	Italianate	c 1870	Corbeled brick course with dentilated brackets, repeated at storefront level; three storefronts contained within this structure	C
416	4	Brick	Mansard	Second Empire	c 1880	Pressed metal courses with projecting pressed metal windows at mansard elevation	C
410	1	Block	Flat	Vernacular	c 1964		NC
400	1	Brick	Flat	Vernacular	c 1975		NC
322	3	Brick	Flat	Eclectic	1887	Projecting brick pilasters framing upper stories, a second pair of pilasters frames center windows in Egyptian Style, terra cotta molds on projecting corbeled cornice with dentilated brackets over horizontal bands of brick	C
320-318				Italianate	c 1870	Corbeled frieze	C
316	3	Brick	Flat	Italianate	c 1887	Projecting brick pilasters framing upper stories, corbeled bracketed brick cornice with horizontal dentilated brick on lower course zoned pressed metal hood molds on second and third floor arched windows, cast iron balcony remains above storefront level	C

TOWANDA HISTORIC DISTRICT

Main Street

Address	No. of Stories	Construction Material	Roof Design	Architectural Style	Date	Outstanding Features	Cont. or NC
312	2	Stone	Hipped	Classical Revival	c 1909	Four Ionic columns and strongly projecting cornice	C
304	3	Brick	Pyramidal	Classical Revival	c 1887	Projecting oriel window on second and third stories, projecting dormer with bulls eye window, facade framed by corbeled brick pilasters topped with rounded finial, storefront cornice and upper cornice feature corbeled ornamented brick, stone lintels and sills on upper stories	C
302	3	Brick	Flat	Italianate	c 1865	Corbeled brick bracketing with dentilated brick on upper and lower courses, transom window on storefront level and bulkheads below store windows, arched windows with casement metal frames and arched brick hood molds	C
300	3	Brick	Flat	Gothic Revival	c 1860	Corbeled brick cornice with dentils on upper and lower brick courses, upper story windows feature arched brick molds and metal casement frames	C
218	2	Frame	Flat	Commercial Vernacular	c 1958		NC
214	2 1/2	Brick Shingles	Mansard	Commercial Vernacular	c 1985		NC
210-212	2	Brick	Flat	Commercial Vernacular	c 1930		NC
206-208	3	Brick	Hipped	Italianate	c 1875	Projecting cornice with arched brackets	C
200	3	Concrete	Flat		c 1950		NC
116	3	Stone	Concrete	Classical Revival	c 1910	Pressed metal cornice with paired brackets and dentils, projecting oriel windows featuring swag detail between floors	C
106 Public Library	2	Brick	Front gable with hipped wing	Flemish Renaissance Revival	1897	Stepped gables topped by decorative terra cotta, blind dormers, with copper roofs, hipped roof on one story bay, brick quoins and extended water table, terra cotta name panel above double glass doors, decorative brick chimney, cameo window, terra cotta surrounds with figures; cupola on main gable	C

TOWANDA HISTORIC DISTRICT

Main Street

Address	No. of Stories	Construction Material	Roof Design	Architectural Style	Date	Outstanding Features	Cont. or NC
28	2	Frame	Side gable	Greek Revival	1814	Pedimented gable ornamented with scroll work, flared edges, classical entry portico, double bracketed cornice, entrance with sidelights and transoms	C
24	2	Frame	Hipped with wing	Italianate	1842	Wide architrave and eaves, elaborate hood molds, full front porch with turned posts, sawn geometric balustrade and beaded frieze	C
22	3	Brick	Front & side gable, hipped wing	Vern. Victorian, Italianate Influence	c 1882	Arched gable windows, wrap around columned porch, 2 level side bay, stone lintels and sills	C
20	2	Frame	Front gable	Greek Revival	1834	Two story full width porch under pedimented gable, each with paired classical columns, beaded balustrade ornate window lintels	C
18	1	Frame	Hipped		c 1960		NC

601	3 1/2	Brick	Shed	Romanesque Revival	c 1887	Round third floor windows with fanlights and stained glass, soldiered brick hood molds, bracketed cornice, multiple corbeled belt courses, four projecting pilasters framing structure, original cornice, corbeled brick bracketing	C
525	1	Brick	Hipped		c 1945		NC
521-523	2	Frame	Flat	Commercial Vernacular	c 1928		NC
517-519	3	Brick	Flat	Italianate	c 1870	Segmental-arched brick hood molds on upper stories, corbeled cornice with dentils	C
515	3	Brick	Flat	Italianate	c 1880	Arched windows with segmental hood molds, corbeled cornice	C
513	3	Brick	Flat	Italianate	c 1880	Arched windows with segmental corbeled hood molds, corbeled cornice with inset brick brackets and multiple brick courses below	C
507-511	3	Brick	Flat	Italianate	c 1880	Arched windows with segmental corbeled hoods, corbeled cornice with inset brick brackets and multiple brick courses below.	C
505	3	Brick	Flat	Italianate	c 1870		C
501-503	3	Brick/ Stucco	Flat	Italianate	c 1870	Arched windows	C

TOWANDA HISTORIC DISTRICT

Main Street

Address	No. of Stories	Construction Material	Roof Design	Architectural Style	Date	Outstanding Features	Cont. or NC
423-429	3	Brick	Flat	Greek Revival	c 1860	Corbeled cornice with dentilated brackets	C
421	3	Brick	Flat	Italianate	c 1865	Arched soldiered brick hood molds with keystone, paired center windows, corbeled cornice with diagonal brick work in architrave	C
419	3	Brick	Flat	Italianate	c 1875	Pressed metal segmental hood molds, projecting cornice and paired brackets	C
415-417	3	Brick	Flat	Italianate	c 1865	Arched soldiered brick hood molds with impost and keystone on upper stories, cornice with corbeled canted bricks and multiple belt courses, quoining at ends	C
411-413	3	Brick	Flat	Italianate	c 1870	Arched pressed metal dentilated hood molds, corbeled brick cornice supported by canted bricks and dentils	C
409	3	Brick	Flat	Italianate	c 1875	Pressed metal segmental hood molds above upper story windows, cornice is corbeled brick cornice with multiple courses	C
401-407	3	Brick	Flat	Greek Revival	c 1855	Projecting decorative cornice with paired brackets and dentils	C
323	3	Brick	Flat	Italianate	c 1880	Corbeled brick cornice with multiple brick courses	C
321	3	Brick	Flat	Italianate	c 1880	Corbeled brick cornice with multiple brick courses	C
319	3	Brick	Flat	Italianate	c 1880	Elaborate dentilated brick cornice	C
317	3	Brick	Flat	Greek Revival	c 1848	Elaborate dentilated brick cornice	C
301	4	Stone	Hipped with gables at cupola	Neoclassical	1897	National Register property	C
213	2	Frame	Gable	Italianate	c 1860	Original wooden front	C
209-211	2	Brick	Flat	Greek Revival	c 1860	Brick pilasters frame storefront and second story dentiled brick cornice	C
205-207	3	Brick/Frame	Flat	Italianate	c 1875	Projecting oriel windows on second and third stories, fish scale detail between bays, end brackets	C
203	2	Brick	Flat	Italianate	c 1875	Corbeled brick cornice and supporting brackets	C
201	3	Brick	Flat	Italianate	c 1875	Pressed metal cornice with metal finials above corbeled brick courses, decorative arched brick hood molds	C
109	1	Brick	Gable	Commercial Vernacular	c 1980		NC

TOWANDA HISTORIC DISTRICT

Main Street

Address	No. of Stories	Construction Material	Roof Design	Architectural Style	Date	Outstanding Features	Cont. or NC
105	3	Brick & Stone	Front gable with lower side gable	Richardsonian Romanesque	c 1869	Multiple arched leaded windows, front gable with cut stone at top, round tower at left and square tower to right with pilasters, false eyebrow dormers in square tower, massive corbeled brick chimney, cut stone belt courses, front door with curved stained glass transom, columned surround and carved frieze	C
103	2 1/2	Brick	Side gable	Prairie Vernacular	c 1900	Centered dormer with flared arched flared roof, pent roof with triple windows	C
101	2 1/2	Brick	Intersecting side gables, hip	Gothic Revival	c 1900	Steep gabled roof with decorative wood trusses and windows	C
23	2	Frame	Gable	Greek Revival	c 1842	Integrity lost to insensitive alterations	NC
21	2	Brick	Hipped	Greek Revival	c 1858	Wide bracketed eaves, ornate cast iron grills in frieze windows, front porch supported by acanthus leaved columns with cast iron capitals	C
19	2	Brick	Hipped	Italianate	c 1857	Wide architrave, bracketed eaves, double windows	C
1	3	Cut stone	Vaulted gable	Romanesque Revival	c 1889	Two towers of varying height with conical roofs, small cones at corner, two gabled porticos, with carved cornice arc, carved frieze band, slender marble columns	C

TOWANDA HISTORIC DISTRICT

North Main Street

Address	No. of Stories	Construction Material	Roof Design	Architectural Style	Date	Outstanding Features	Cont. or NC
6	2 1/2	Frame	Intersecting gable	Greek Revival	c 1858	Pedimented front windows and portico with Doric columns, pilastered entrance	C
10	2	Frame	Front gable	Greek Revival	c 1854	Pedimented front with modillions, brick corbeled chimney, Ionic columns, wrap around porch with carved balusters, sidelights at door	C
12	2 1/2	Frame	Side gable	Princess Anne	c 1885	Oriel window	C
14	2 1/2	Frame	Side Gable	Italianate	c 1850	Gabled portico, corbeled chimney	NC
16	2	Frame	Front Gable	Greek Revival	c 1850	Pedimented front gable, dentilated gable window, gabled portico, columned side porch	C
100	2 1/2	Frame	Double front gable, hipped	Queen Anne	c 1890	Front paired gables, pedimented side gables, Palladian windows, full width porch with tapered posts	C
102	1 1/2	Frame	Front gable	Greek Revival	c 1850	Gabled portico, turned posts, sidelights	C
104	1 1/2	Frame	Front gable	Greek Revival	c 1850	Pedimented portico with classical columns, entrance sidelights	C
106	2	Frame	Hipped roof	Mld-Century Vernacular	c 1865		C
108	2	Frame	Front gable		c 1960		NC
116	2	Frame	Front gable	Vern. Victorian	c 1865		C
118	2	Frame	Front gable with wing	Vern. Victorian	c 1865	Front gable with wing, scrolled brackets, bevelled porch posts with scrolled brackets	C
122	1	Frame	Irregular	Vern. Victorian	c 1900		C
124	2	Frame	Gable with wing	Vern. Victorian	c 1865		C
126	2	Frame	Front gable with wing	Vern. Victorian	c 1890		C
128	2	Frame	Front gable	Vern. Victorian	c 1890		C

TOWANDA HISTORIC DISTRICT

North Main Street

Address	No. of Stories	Construction Material	Roof Design	Architectural Style	Date	Outstanding Features	Cont. or NC
130	2	Frame	Front gable	Vern. Victorian	c 1900		C
132	2 1/2	Frame	Cross Gable	Queen Anne	c 1885	Cross gable, two matching front gables, decorative shingles flared at base, cut away 2 story bay, wrap around porch with turned posts	C
202	2	Frame	Front gable with wing	Vern. Victorian	c 1895	Portico in side wing, square stained glass window, arch and frieze	C
204	2	Frame	Side gable	Mid Century Vernacular	c 1894		NC
206	2	Frame	Front gable	Vern. Victorian	c 1890		C
208	2	Frame	Front gable	Vern. Victorian	c 1890		C
208 1/2	2	Frame	Hipped with gables	Queen Anne	c 1895		C
210	2	Frame	Front gable	Vern. Victorian	c 1865		NC
212	2	Frame	Front gable with wing	Vern. Victorian	1861	Pedimented entrance with curved pilasters	C
216	2	Frame	Front gable	Vern. Victorian	c 1865		C
218	2	Frame	Hipped	Mid Century Vernacular	c 1865		C
220	2 1/2	Frame	Intersecting gable	Vern. Victorian	c 1865		C
300	2	Frame	Gable with wing	Vern. Victorian	c 1894		C
302	2	Frame	Front gable with wing	Vern. Victorian	c 1890	Barge boards with sawn design	C
304	2	Frame	Hipped	Mid Century Vernacular	c 1868		C
306	2 1/2	Frame	Front gable	Vern. Victorian	c 1890		C

TOWANDA HISTORIC DISTRICT

North Main Street

Address	No. of Stories	Construction Material	Roof Design	Architectural Style	Date	Outstanding Features	Cont. or NC
15	2	Frame	Front gable	Vern. Victorian	c 1890	Sawn frieze and balustrade with front door with glass panels with curved tops	C
17	2	Frame	Front gable	Vern. Victorian	c 1890		C
101	2	Frame	Gable with wing	Vern. Victorian	c 1890	Attached porch with arches and beveled posts connected by arches, turned balustrade window	C
105	2 1/2	Frame	Side gable	Italianate	c 1879		C
111	1 1/2	Frame	Front gable	Bungalow	c 1920		C
113	2 1/2	Frame	Intersecting gables	Queen Anne	c 1880	Spindled balustrade, pilasters, cornice and diamond paned window in gable, corbeled chimney	C
115	2 1/2	Frame	Side Gable	Gothic Revival	c 1875	Gabled dormers and portico, decorative bargeboards on center balcony gables, cut stone foundation, large central gable window with Gothic arch	C
119	2	Frame	Front gable	Mid-Century Vernacular	c 1870		C
123	2 1/2	Frame	Hipped Pyramidal lower gable	Queen Anne	c 1890	Columned porch with balustrade	C
201	2	Frame	Hipped side and front gables	Mid-Century Vernacular	c 1865		C
203	2	Frame	Front gable with wing	Vern. Victorian	c 1870		C
209	2	Frame	Hipped	Mid-Century Vernacular	c 1865		C
211	2	Frame	Front gable with wing	Vern. Victorian	c 1875		C
213	2	Frame	Front gable with wing	Vern. Victorian	c 1870		C
215	2	Frame	Front gable with wing	Vern. Victorian	c 1865		C
217	2	Frame	Front gable with wing	Vern. Victorian	c 1870		C

TOWANDA HISTORIC DISTRICT

North Main Street

Address	No. of Stories	Construction Material	Roof Design	Architectural Style	Date	Outstanding Features	Cont. or NC
221	2	Frame	Side gable	Vern. Victorian	c 1880	Pedimented porch with tapered posts	C
301	2	Frame	Front gable with wing	Vern. Victorian	c 1890		C
305	1	Frame	Front gable	Craftsman	c 1920	Full front porch with pedimented and columned entry, tapered bay window	C
307	2	Frame	Hipped	Mid Century Vernacular	c 1870	Side portico with pillars	C
311	3	Frame	Hipped	Mid Century Vernacular	c 1865	Full front porch with turned posts and spindled frieze	C
313	2	Frame	Hipped	Mid Century Vernacular	c 1865	Wide eaved hipped roof, paneled door with sidelights and canopy	C

TOWANDA HISTORIC DISTRICT

York Avenue

Address	No. of Stories	Construction Material	Roof Design	Architectural Style	Date	Outstanding Features	Cont. or NC
10	3 in rear 2 1/2 front	Frame	Intersecting gables	Gothic Rev.	c 1867	Decorative scroll work on barge boards, closed portico with gable arches on door and side windows, gable above portico with decorative Gothic arched double window, pendants in gable peaks	C
12	2 1/2	Frame	Intersecting gables	Colonial Revival	c 1910	Pedimented and pilastered entrance	C
16	3 1/2	Frame	Steep side gable	Colonial Revival	c 1912	Pedimented dormers, corbeled chimney, portico with Ionic columns flanking door with sidelights and balcony above entry, wrought iron fence	C
102	2	Frame	Hipped	Craftsman	c 1910	Steeply hipped massive dormers, flared porch roof line, triple dormer windows	C
104	2 1/2	Frame		Queen Anne	c 1892	Square bay, wrap around porch with turned posts, sawn porch frieze and balustrade, small double windows clipped gables	C
106	2	Frame	Hipped with wing	Mid Century Victorian	c 1870		C
112	2	Frame	Front gable with wing	Vern. Victorian	c 1867	Turned posts and spindled balustrade on wrap around porch	C
118	3	Frame	Hipped with tower	Queen Anne	c 1897	Wrap around porch with pedestaled columns and spindled balustrade, arched pedestaled columns at entry way, triple window with broken pediment, Palladian window, tower bay with swag frieze and dormer, double entry with cut glass, pedimented porches	C
120	2 1/2	Frame	Front gable	Queen Anne	c 1900		C
122	2 1/2	Frame	Intersecting gable	Queen Anne	c 1900		C
206	2	Frame	Hipped	Colonial Revival	c 1920	Paired windows	C
208	2	Frame	Hipped	Colonial Revival	c 1910	Full width dormer, paired window, gable arched entry, fluted columns and sidelights	C
210	2	Frame	Gambrel	Dutch Colonial Revival	c 1890	Pedimented portico, square columns, recessed dormer, beveled glass paneled door with sidelights	C
212	2 1/2	Frame	Hipped	Four Square	c 1920	Wrap around porch with balustraded columns	C
214	2 1/2	Frame	Intersecting gable	Queen Anne	c 1911	Wrap around columned porch with sawn balusters, front pedimented gable with returns	C

TOWANDA HISTORIC DISTRICT

York Avenue

Address	No. of Stories	Construction Material	Roof Design	Architectural Style	Date	Outstanding Features	Cont. or NC
216	2	Frame	Side gable	Colonial Revival		Classic portico with fluted Doric columns, sidelights	C
302	2 1/2	Frame	Pyramidal with front gable	Vern. Victorian	c 1895	Pedimented and columned front portico and side porch, Gothic window	C
304	2	Frame	Intersecting gable	Italian Villa	c 1867	Tower with narrow paired arched windows, carved pilasters and brackets, pedimented gables, wide bracketed cornice, arched surround and double door	C
306	2 1/2	Frame	Pyramidal with front gable	Queen Anne	c 1890	Full front porch with fluted columns, dormers	C
308	2	Frame	Hipped	Mid Century Vernacular	1867		C
310	2	Frame	Front gable	Vern Victorian	c 1867		C
312	2	Frame	Front gable with wings	Mid Century Vernacular	c 1875		C
314	2	Frame	Side gable	Vern Victorian	c 1880		NC
316	2	Frame	Front gable with wings	Vern Victorian	c 1880		NC
320	2	Frame	Hipped with wing, front gable	Italianate	c 1870	Double doors with transom	C
324	2 1/2	Frame	Intersecting gable with tower	Vern. Victorian	c 1900	Full front porch with turned posts, stick balustrades, pedimented double bay	C
326	2	Brick	Front gable	Ranch	c 1940		C

TOWANDA HISTORIC DISTRICT

York Avenue

Address	No. of Stories	Construction Material	Roof Design	Architectural Style	Date	Outstanding Features	Cont. or NC
1	2	Frame	Side gable	Federal	c 1812	5 bay, columned portico	C
7	2 1/2	Frame	Pyramidal	Colonial Revival	c 1910	Pedimented dormers, columned front porch with pedimented projecting entry, sidelights	C
11	2	Frame	Side gable	Vern. Victorian	c 1890		C
15	2	Frame	Hipped with wing	Italianate	c 1856	Double columned porch in ell, balustraded portico with columns and cornice, wrap around front porch, beaded frieze and ornate balustrade, projecting cut stone lintels, arched hood molds, corbeled brick chimneys with wide tile insets, double paneled glass entrance	C
101	3	Brick with cut stone trim	Pyramidal with multi gables	Queen Anne	c 1880	Gabled projecting wing with brackets, porte cochere with gable, high gable dormer with multi paned windows	C
103	2 1/2	Frame	Side gable	Vern. Victorian	c 1893		C
105	3	Frame	Side gable	Queen Anne	c 1875	Domed cupola, bi-level side porch, curved turned posts and spindled balustrade	C
107	3	Frame	Side gable	Queen Anne	c 1893	Stick influence, projecting gabled dormers with sunburst detail, front dormer with clipped gable, stick style detailing, wrap around porch with stick style railing, two story side bay, corbeled chimney	C
109	2	Frame	Front gable with wings	Greek Revival	c 1840	Gable with wide returns and decorative hood molds, ornate brackets, corbeled chimney	C
201	2	Frame	Hipped	Italianate	c 1873	Entrance pilasters, segmental hood molds	C
207	2	Frame	Hipped with wing	Italianate	c 1848	Wide eaves, scroll brackets, porch with turned posts and balustrade, double front doors with transom, cornice and braced door surround	C
209	2	Frame	Front gable, hipped wings	Greek Revival	c 1842	Entrance side lights and transom	C
217	2 1/2	Frame	Pyramidal, gabled	Queen Anne	c 1894	Pedimented entrance, front porch with spindled frieze and balustrade, recessed porch under bay window, gabled dormer	C
301	3	Frame	Hipped, front gable and tower	Queen Anne	c 1892	Front gable with Palladian window, flared eaves, hexagonal tower with tent roof, wrap around porch, columned porch with spindled baluster, double door with glass panels	C
305	2 1/2	Frame	Hipped, with gables	Italianate	c 1873	Square cupola, scroll brackets under eaves, paired round top windows inset in gables, turned porch columns with brackets	C

TOWANDA HISTORIC DISTRICT

York Avenue

Address	No. of Stories	Construction Material	Roof Design	Architectural Style	Date	Outstanding Features	Cont. or NC
309	2	Frame	Front gable	Greek Revival	c 1854	Classical portico, fan light and side lights with tracery, lunettes in gable front and side	C
311	3	Frame	Mansard	Second Empire	c 1874	Carved paired brackets, hooded dormers, wide wrap around porch, segmental hood molds	C
319	2 1/2	Frame	Hipped with gables	Queen Anne	c 1892		C
321	2 1/2	Frame	Intersecting gable	Queen Anne	c 1890	Large triple window in gable, wrap around porch, round columns	C
323	2 1/2	Frame	Hipped with cross gables	Queen Anne	c 1894	Wrap around porch turned columns hexagon tower, bee hive roof, shingled front gable, corbeled brick chimney	C
325	3	Frame	Front gable	Queen Anne	c 1894	Massive front gable with recessed third level porch and bulls eye windows, porch with spindled frieze, stick type balusters	C
327	2	Frame	Front gable	Vern. Victorian	c 1895		NC
329	2 1/2	Frame	Front gable and wing	Vern Victorian	c 1895		C
331	2 1/2	Frame	Cross gable	Vern Victorian	c 1891		C
359	2 1/2	Frame	Front gable and wing	Vern Victorian	c 1894		C
361	2 1/2	Frame	Side gables	Queen Anne or Vernacular	c 1895	Flared eaves with paired brackets, front porch with scroll brackets, turned posts	C
363	3	Frame	Hipped, lower gables	Queen Anne	c 1894	Scalloped shingles, recessed porch on third story, wrap around porch with turned columns, corbeled brick chimney, 3 full story gabled bays, bulls eye windows, octagonal tower with tent roof	C
365	2	Frame	Hipped	Italianate	c 1890	Wide eaves, full front porch, octagonal columns	C
369	2	Frame	Side gable	Greek Revival	c 1870	Five rank windows, cornice and wide architrave, corbeled chimneys, full width columned front porch, pedimented at entry	C
373	2	Frame	Front gable with wing	Vern Victorian	c 1880		C
375	2 1/2	Frame	Intersecting gable	Queen Anne	c 1878	Octagonal tower, beehive roof, full width porch, pedimented entry with carved panel, spindled frieze and balustrade, pedimented side gable recessed under projecting gables	C

TOWANDA HISTORIC DISTRICT

Cherry Street

Address	No. of Stories	Construction Material	Roof Design	Architectural Style	Date	Outstanding Features	Cont. or NC
6	2	Frame	Side gable		c 1960		NC
10	2	Frame	Front gable with wing	Italianate	c 1865	Wing porch with sawn wood frieze and balusters, columned arches, plastered entry	C

1	2	Frame	Pyramidal	Four Square	c 1910		C
3	2	Frame	Hipped	Italianate	c 1880	Full front porch with paired columns connected by keystoned arches	C
5	2	Frame	Hipped with wing	Mid Century Vernacular	c 1870		C
7	2	Frame	Hipped	Mid Century Vernacular	c 1870		C
11	2	Frame	Side gable		c 1960		NC

TOWANDA HISTORIC DISTRICT

Second Street

Address	No. of Stories	Construction Material	Roof Design	Architctural Style	Date	Outstanding Features	Cont. or NC
516	2	Frame	Front gable Intersecting gable	Greek Revival	c 1869	Semicircular attic window	C
514	2 1/2 Frame	Frame	Front gable	Vern. Victorian	c 1880		C
512	2	Brick	Side gable	Italianate	c 1860		C
508	2 1/2	Frame	Intersecting gable	Queen Anne	c 1880	Dentilated pediment offset in projecting gable, also present in porch, elliptical flared attic window	C
506	2	Frame	Front gable	Vern. Victorian	c 1869	Arched roof dormers, low hanging projecting bay on first floor	C
504	2	Frame	Gable with wing	Carpenter Gothic	c 1868	Barge boards in steep gables, first floor bay with balustrade	C
502	2	Frame	Hipped	Mid Century Vernacular	c 1869		C
500	2 1/2	Frame	Front gable with wing	Greek Revival	c 1855	Pedimented portico at corner with beaded frieze, flared base and attenuated spindles	C
404	1	Concrete		Ranch	c 1950		NC
402	2	Frame	Gable	Vern. Victorian	c 1885		C
400	2	Frame	Gable	Italianate		Dentilated cornice, ornate wrap around porch	C
312	3	Frame	Pyramidal with projecting dormer	Queen Anne	c 1880	Paired fluted porch columns	C
308	2	Frame	Gable with ell	Greek Revival	c 1865		C
304	2	Brick	Hipped	Italianate	c 1870	Overhanging eaves, paired windows	C
302	2 1/2	Frame	Pyramidal	Queen Anne Stick Style	c 1884	Stick influence, corbeled chimneys, projecting bay with upper balcony, decorative porch with elaborate columns and brackets, sawn shed dormer, balcony	C

TOWANDA HISTORIC DISTRICT

Second Street

□

Address	No. of Stories	Construction Material	Roof Design	Architectural Style	Date	Outstanding Features	Cont. or NC
210	2	Frame	Hipped with wings	Greek Revival	c 1860	Paired windows, corbeled chimneys, full front porch with Corinthian columns, entry with transom and sidelights	C
204	2	Frame	Hipped with wing	Greek Revival	c 1867		C
202	2	Frame	Side gable	Greek Revival	c 1875	12/8 windows, rubblestone foundation	C
116	2	Frame	Gable	Greek Revival	c 1835		C
110	3	Frame	Pyramidal with intersecting gable	Queen Anne	c 1877	Sawtooth shingles in gables, stained glass windows, two story gabled bay, arched paneled frieze, recessed porch with arched columns	C
108	3	Frame	Front Gable	Queen Anne	c 1912	Full front porch with fluted ionic columns and pilasters, pedimented gable over two story bay	C
104	2	Frame	Front Gable	Greek Revival	c 1840		C
102	2	Brick	Hipped	Greek Revival	c 1830	Oversized dentils, paneled doors with transoms, bracketed bay with pilasters and paneled frieze	C
16	2 1/2	Frame	Gambrel with pyramidal wing	Greek Revival	c 1838	Dentilated cornice with return eaves, pedimented dormers with pilasters, entry with transom and sidelights, variant Palladian window in gambrel, corbeled chimney, Colonial Revival additions including corbeled chimney and Palladian window c 1895	C
14	2	Frame	Front gable, intersecting hipped wings	Greek Revival	c 1838	Full height classical front porch supported by fluted ionic columns, paneled lintels, entry with sidelights and ionic pilasters, ell with hipped roof and columned portico	C
12	2	Frame	Front gable with wing	Greek Revival	c 1838	Pedimented front gable, square columns on full front porch, entry with pilastered sidelights and cornice	C
10	2	Frame	Side gable	Federal	c 1838	Cornice supported by sawn brackets, Gothic inspired barge boarding in gable	C
8	2	Frame	Side gable	Greek Revival	c 1838	8/12 windows, columned entrance, some Gothic Revival trim	C

TOWANDA HISTORIC DISTRICT

Second Street

Address	No. of Stories	Construction Material	Roof Design	Architectural Style	Date	Outstanding Features	Cont. or NC
507	3	Brick	Flat	Italianate	c 1880	Corbeled brick cornice, multiple dentilated belt courses, enclosed portico entrance with side lights and transom, stone lintels and sills	C
403	2 1/2	Frame	Gable	Vern. Victorian			C
311-317	3	Brick	Front gable	Vern. Victorian	c 1880	Stone lintels and sills	C
307	2 1/2	Frame	Pyramidal	Queen Anne	c 1885		C
305	2	Brick	Gable with tower	Gothic Revival	c 1877	Arched tracery windows, narrow bays	C
303	2	Frame	Hipped	Mid Century Victorian	c 1875		C
301	2	Frame	Hipped	Mid Century Victorian	c 1875		C
205	2 1/2	Frame	Gambrel with side gables	Greek Revival	c 1845	Gambrel roof added later, c 1890	C
201	3	Brick	Hipped	Italianate	c 1872	Wide eaves, architrave with carved brackets and dentils, round arched transom and double door, arched windows over entry with corbeled hood molds	C
105	3	Brick	Intersecting gable	Vern. Victorian	1911	Stone lintels and sills, pedimented gables with pent roof, originally carriage house	C
103	2	Frame	Hipped	Mid Century Victorian	c 1891		C
101	2 1/2	Frame	Front Gable with wing	Vern. Victorian	c 1880	Gothic arched windows in gable	C
15	2	Frame	Hipped with gable wing	Italianate	c 1880	Wrap around porch, square columns and spindled frieze, sawn balusters, eyebrow drip molds	C

TOWANDA HISTORIC DISTRICT

Second Street

Address	No. of Stories	Construction Material	Roof Design	Architectural Style	Date	Outstanding Features	Cont. or NC
13	2	Frame	Hipped with front gable	Italianate	c 1875	Full front porch with columns and balustrade, arched gable windows	C
9	3	Frame	Hipped with wing	Italianate	c 1870		C
7	2	Frame	Hipped	Mid Century Victorian	c 1891	Pedimented gable, ornamented with scroll work, flared edges, classical entry portico with eaves and double brackets, side lights and transom with lights	C
5	3	Frame	Mansard	Second Empire	c 1880	Mansard tower with paired brackets under eaves, rounded top dormer in paired windows, recessed porches on two levels, front porch with bevelled columns, sawn brackets	C
3	2	Frame	Front Gable	Vern. Victorian	c 1890	Turned porch posts and decorative brackets	C

TOWANDA HISTORIC DISTRICT

Third Street

Address	No. of Stories	Construction Material	Roof Design	Architectural Style	Date	Outstanding Features	Cont. or NC
518	2 1/2	Frame	Intersecting gable	Greek Revival	c 1855	Front door with dentilated moulding and pilaster, transom and sidelights, wrap around porch with octagonal columns	C
514	2	Frame	Cross gable	Greek Revival	c 1850	Pedimented and bracketed entry	C
512	2	Frame	Side gable	Italianate	c 1870	Sidelight and transom, wrap around porch, fluted ionic columns set on pliers, turned spindles	C
510	2	Frame	Hipped with gable	Mid Century Vernacular	c 1870	Octagonal porch columns, entrance with sidelights and transom	C
508	2	Frame	Dentil molding	Greek Revival	c 1867		C
506	2	Frame	Pyramidal	Mid Century Vernacular	c 1870		C
504	2	Frame	Hipped with wing	Italianate	c 1879	Sawn arch with keystone connecting columns, wrap around porch and pedimented entry	C
502	2	Frame	Cross gables	Greek Revival	c 1867	Side porch with paired columns, pilastered entrance	C
500	2	Frame	Hipped	Greek Revival Italian influence	c 1855	Dentilated paired bracket, sidelights and transom, full front porch, fluted ionic columns with brackets, brackets and dentilated molding	C
404	2	Frame	Gambrel	Dutch Colonial	c 1920	Arched attic window with flared keystone	C
402	3	Frame	Intersecting Gable	Queen Anne	c 1885	Scalloped gable, diamond shaped window in projecting dormer	C
310	2	Brick	Hipped with wing	Italianate	c 1875	Wide eaves, dentilated brackets and wide architrave with eyebrow windows, wrap around columned porch, square incised stone lintels and sills	C
306	2	Frame	Hipped	Four Square	c 1920	Hipped dormers with triple windows, columned porch with stick balustrade, corbeled chimney	C
302		Brick	Intersecting gables, side gables	Gothic Revival	c 1846	Gothic window with carved inset, balustraded entrance	C
208	2	Frame	Hipped	Greek Revival	c 1851	Dentils and eyebrow windows with cast iron grills in wide architrave, carved fan design above windows, fluted ionic columns	C
200	1	Frame	Side gable	Ranch	c 1950		NC
106	3	Brick and frame	Intersecting gables with tower	Queen Anne	c 1905	Projecting double bay with tent roof tower, wrap around front porch with fluted columns, spindled balustrade	C

TOWANDA HISTORIC DISTRICT

Third Street

Address	No. of Stories	Construction Material	Roof Design	Architectural Style	Date	Outstanding Features	Cont. or NC
519	1 1/2		Dormer Pyramidal	Vern. Victorian	c 1880		C
513	2	Brick	Hipped	Italianate	c 1865	Balustraded portico with square posts and pilasters, side porch with balustrade, double windows on ground floor, triple windows with keystone over door, low pedimented intersection gable	C
511	2	Frame		Mid Century Vernacular	c 1865		C
509	3	Frame	Side gable with centered front gable	Italianate	1868	Paired brackets with gable and cornice modillions, arched gable window with stained glass, door with stained glass transom, columned porch with balustrade,	C
505	3	Brick	Cross gable, tower and mansard	Italian Villa	c 1881	Tower with balcony and iron cresting, arched window, gabled dormer, balcony with squared posts on piers, beaded railing and frieze, glass paneled double door, arched transom, etched glass doors, front and side columned wrap around porch with iron grillwork and stone base	C
503 1/2	2 1/2	Brick	Intersecting gable	Vern. Victorian	c 1880	Iron crested cupola, sawn balusters, pedimented entry door, sidelights and transom	C
503	2 1/2	Frame	Hipped with intersecting gable	Vern. Victorian	c 1890	Double front doors with transom, wrap around columned porch with spindles and frieze	C
501	2	Frame	Hipped pyramidal	Queen Anne	c 1885	Multiple gables with stained glass windows, corbeled chimney, full side pedimented porch with spindles and curved balustrade	C
409	2	Frame	Hip	Mid Century Vernacular	c 1890		C
407	3	Frame	Gable	Vern. Victorian	c 1880		C
311	2 1/2	Frame	Pyramidal with intersecting gable	Vern. Victorian	c 1880	Single story bay, beaded balustrade	C
309	2 1/2	Frame	Intersecting gable	Vern. Victorian	c 1880		C
307	3	Frame	Side gable	Gothic Revival	c 1870	Triple gable, steep roofed dormers, paired windows	C
203	1 1/2	Frame	Side gable	Cape Cod	c 1960		NC
201	1	Frame	Shed	Ranch	c 1970		NC
1	2 1/2	Brick and Stone	Front gable with centered tower	Gothic Revival Catholic Church	c 1869	Round tower with tent roof, gabled dormers on four sides, Gothic windows with stone heads	C

TOWANDA HISTORIC DISTRICT

North Third Street

Address	No. of Stories	Construction Material	Roof Design	Architectural Style	Date	Outstanding Features	Cont. or NC
16 -10	2	Frame	Intersecting side gables	Queen Anne	c 1890	Row houses, fish scale shingles, multiple front gable	C
8	1	Brick	Hipped	Ranch	1945		NC
6	2 1/2	Frame	Front gable with wing	Vern. Victorian	c 1895	Front and side gable peaks have decorative patterned shingles, flared gable	C
4	2	Frame	Hipped with centered front gable	Vern. Victorian	c 1895	Full columned front porch, glass paneled door and pilasters	C
13	2	Frame	Front gable	Greek Revival	c 1890		C
5	2 1/2	Frame	Front gambrel with gable and hip	Dutch Colonial Revival	c 1905	Gothic window at peak, front porch recessed under gable, side dormers with tent-like roof set in gambrel	C

TOWANDA HISTORIC DISTRICT

Fourth Street

Address	No. of Stories	Construction Material	Roof Design	Architectural Style	Date	Outstanding Features	Cont. or NC
412	2	Frame	Front gable with wing	Vern. Victorian	c 1880		C
410	2	Frame	Side Gable	Bungalow, Craftsman	c 1930	Full front porch, large dormer, projecting rafters and exaggerated eaves, stone chimney	C
402	3	Brick	Pyramidal	Four Square	c 1930	Shed roof dormers on both sides, exposed rafters, hipped roof dormer, full porch with square columns	C
400	2 1/2	Frame	Pyramidal	Four Square	c 1930	Paired stained glass windows, corbeled chimney, shed roof side dormer, full front porch with square columns,	C
118	2	Frame	Hipped	Italianate	c 1875	Bracketed roof cornice, one story paneled bay with pilasters and brackets	C
114	2	Frame	Hipped	Italianate	c 1870	Front squared porch posts and sawn bracketing	C
112	2	Frame	Front gable with wing	Vern. Victorian	c 1880	Wrap around porch, turned posts with brackets	C
110	2	Frame	Hipped	Mid Century Vernacular	c 1875		C
108	2	Brick	Front gable	Vern. Victorian	c 1890		C
106	2	Frame	Hipped with wing	Vern. Victorian	c 1880		C
403	2 1/2	Frame	Front gable	Vern. Victorian	c 1890	Pedimented gable, full columned front porch	C

TOWANDA HISTORIC DISTRICT

Fifth Street

Address	No. of Stories	Construction Material	Roof Design	Architectural Style	Date	Outstanding Features	Cont. or NC
11	2 1/2	Frame	Pyramidal Intersecting gable	Vern. Queen Anne influence	c 1890	Pedimented double windows, stained glass window, full front porch with paired columns and spindled balustrade	C
7	2 1/2	Frame	Intersecting gable	Vern. Victorian	c 1885		C

TOWANDA HISTORIC DISTRICT

Washington Street

Address	No. of Stories	Construction Material	Roof Design	Architectural Style	Date	Outstanding Features	Cont. or NC
2	1	Brick	Hipped	Stick	c 1880	Roof supported by stick work over platform, large freight doors	C
1	1	Frame	Hipped	Stick	c 1910	Stuccoed walls, roof supported by stick work	C

TOWANDA HISTORIC DISTRICT

Bridge Street

Address	No. of Stories	Construction Material	Roof Design	Architectural Style	Date	Outstanding Features	Cont. or NC
4-18	2	Frame	Side gable		c 1950		NC
110	2 1/2	Frame	Front gable	Greek Revival	c 1816	Ionic columns, boxed pediment, dentilated porch cornice and frieze, Georgian window Ionic columns in recessed entry - moved here 1885	C
112	3	Frame	Intersecting gable	Queen Anne	c 1894	Tower with tent roof, intersecting gable with pergola, decorative boxed pediment with incised frieze, dentilated cornice and porch elements	C
200	2	Frame	Hipped	Spanish Revival	c 1930	Spanish tile roof, arched porch	C
206	1	Frame	Side gable	Ranch	c 1945		NC
210-212	2	Frame	Hipped	Mid Century Vernacular	c 1865		C
300	2 1/2	Frame	Hipped with gable dormer	Queen Anne	c 1885	Wrap around porch with spindles, boxed in pediment	C
302	2	Frame	Front gable	Greek Revival	c 1860		C
304	2	Frame	Hipped	Mid Century Vernacular	c 1860	Wide boxed eaves	C
306	2	Frame	Hipped	Mid Century Vernacular	c 1865	Spindled side porch	C
308	2 1/2	Frame	Pyramidal	Vernacular Victorian	c 1885	Porch with jig-sawn balustrade and frieze	C
400	2 1/2	Frame	Pyramidal	Queen Anne	c 1891	Large pedimented dormer, full columned front porch with sawn balustrade	C
402	2 1/2	Frame	Intersecting gable	Vernacular Victorian	c 1885	Projecting clipped gable, decorative frieze	C
404	3	Frame	Intersecting gable	Queen Anne	c 1885		C
408	2 1/2	Frame	Intersecting gable	Vernacular Victorian	c 1880		C

TOWANDA HISTORIC DISTRICT

Bridge Street

Address	No. of Stories	Construction Material	Roof Design	Architectural Style	Date	Outstanding Features	Cont. or NC
1	2 1/2	Frame	Gable	Greek Revival	c 1865		C
3	2 1/2	Frame	Gable	Greek Revival	c 1860		C
5-7	3	Brick	Flat	Italianate	c 1870	Corbeled and bracketed brick cornice, arched windows with soldiered brick hood molds	C
9-11	3	Brick	Flat	Italianate	c 1870	Same as 5-7	C
103	2	Brick	Flat	Italianate	c 1875	Pressed metal cornice - total loss of integrity	NC
103 1/2	1	Frame	Gable	Commercial Vernacular	c 1925	Former garage or car dealer	C
105	2 1/2	Frame	Hipped	Spanish Revival	c 1930	Spanish tile roof	C
113	2	Frame	Projecting gable	Greek Revival	c 1850	Segmental hood molds, door with transom and sidelights, pilasters modillions under eaves	C

TOWANDA HISTORIC DISTRICT

Pine Street

Address	No. of Stories	Construction Material	Roof Design	Architectural Style	Date	Outstanding Features	Cont. or NC
102	3	Brick	Flat	Italianate	c 1869	Corbeled cornice, stone lintels and sills, beaded frieze	C
104	3	Brick	Flat	Italianate	c 1869	Corbeled cornice	C
106	3	Brick/ Stucco	Flat	Italianate	c 1869	Second story porch with turned posts, corbeled cornice	C
108	3	Brick/ Stucco	Flat	Italianate	c 1869	Corbeled cornice	C
202	2	Frame	Front gable	Greek Revival	c 1850		C
204	3	Frame	Intersecting gable	Vern. Victorian	c 1880	Wrap-around porch with brackets and dentilated frieze, Palladian window in attic story	C
302	2	Frame	Hipped	Italianate	c 1875		C
304	2	Frame	Intersecting gable	Greek Revival	c 1855	Wrap-around porch with turned spindles and frieze, octagonal cupola with cornice and brackets, spindled balustrade	C

17	2	Frame	Flat	Modern	1940		NC
County Jail	3	Stone	Hipped	Italianate	c 1871	Arched recessed entrance, stone hoods and sills, corbeled chimneys	C
111	2	Frame	Hipped	Mid Century Vernacular	c 1875	Wide eaves, full front porch	C
203-205	2 1/2	Frame	Pyramidal	Princess Anne	c 1894	Pyramidal roof with projecting gable dormers, attic windows tracery	C
207	2	Frame	Front gable	Greek Revival	c 1865		C
209	2	Frame	Front gable	Greek Revival	c 1865		C
213	2	Frame	Hipped	Mid Century Vernacular	c 1893		C
301	2 1/2	Frame	Hipped with projecting gables	Vern. Victorian	c 1890		C
305	2 1/2	Frame	Intersecting gable	Vern. Victorian	c 1885		C
307	2	Frame	Hipped	Italianate	c 1870	Wrap-around porch with pedimented gable dormer, bay window inset in porch with decorative shingles	C
309	2	Frame	Hipped	Mid Century Vernacular	c 1875	Wrap-around porch with turned spindles and decorative frieze	C
311	2	Frame	Intersecting gable	Vern. Victorian	c 1880		C
313	2	Frame	Intersecting gable	Vern. Victorian	c 1880		C
315-317	2	Frame	Hipped	Mid Century Vernacular	c 1875		C

TOWANDA HISTORIC DISTRICT

Court Street

Address	No. of Stories	Construction Material	Roof Design	Architectural Style	Date	Outstanding Features	Cont. or NC
5	1	Brick	Gable with center tower	Gothic Revival	1855	Dentilated brick tower with flat roof; castellated buttressed	C
Court-house Annex	2	Brick	Hipped	Italianate	1857	Stone lintels and sills, decorative brick work, center parapet, cut stone foundation	C
3	3	Brick	Flat	Greek Revival	c 1848	Original storefront with massive stone lintels supported by square stone pillars	C

TOWANDA HISTORIC DISTRICT

Poplar

Address	No. of Stories	Construction Material	Roof Design	Architectural Style	Date	Outstanding Features	Cont. or NC
108	2 1/2	Brick/Frame	Hipped with front and side gables	Italianate	c 1875	Arched window in gable, dentilated eaves	C
212	2	Frame	Side gable	Colonial Revival	c 1920		C
216	2	Frame	Hipped	Italianate	c 1875	Segmental hood molds over double windows, paired brackets and posts on wrap around porch, bracketed bay window in wing	C
218	2	Frame	Intersecting gable	Queen Anne	c 1885		C
222	3	Frame	Hipped	Italianate	c 1865	Carved brackets and modillions	C
224	2	Frame	Gable with wing	Vern. Gothic Influence	c 1868	Decorative barge boards with double bay windows in wing	C
226	2	Frame	Gable with wing	Vern. Victorian	c 1868		C
228	2	Frame	Hipped	Mid Century Vernacular	c 1865		C

5	4	Brick	Mansard	Second Empire	c 1880		C
7	2	Brick	Flat	Contemporary	c 1970		NC
107	2	Frame	Gable	Colonial Revival	c 1955		NC
211	2	Frame	Gable with wing	Vern. Victorian	c 1885		C
215	2 1/2	Frame	Hipped	Italianate	c 1875	Projecting pent roof dormer	C
217	2	Frame	Gable with wing	Vern. Victorian	c 1880	Wrap around porch with turned spindles and brackets	C
219	2	Frame	Hipped, projecting gable	Mid Century Vernacular	c 1875	Boxed pedimented gable with arched window, projecting bay	C
221	2	Frame	Projecting Gable	Vern. Victorian	c 1880	Paired windows	C
225	1	Brick	Gable	Ranch	c 1960		NC
227	3	Frame	Gable	Gothic Revival	c 1854	Carpenter Gothic barge board and cornice elements, fan light and sidelight hood molds, paired brackets, bay window with scalloped roof, segmental arched hood molds	C
233	2 1/2	Frame	Intersecting Gable	Vern. Victorian	c 1885	Pedimented entry	C

TOWANDA HISTORIC DISTRICT

Park Street

Address	No. of Stories	Construction Material	Roof Design	Architectural Style	Date	Outstanding Features	Cont. or NC
10	1 1/2	Brick and wood	Hipped	Colonial Revival	c 1930	Center tower with octagonal cupola with balustrade, broken pediment and pilasters at base, bulls eye window in tower and upper stories, classical entry below Palladian window, stone water course	C

TOWANDA HISTORIC DISTRICT

State Street

Address	No. of Stories	Construction Material	Roof Design	Architectural Style	Date	Outstanding Features	Cont. or NC
2	2	Frame	Side gable	Greek Revival	c 1840		C
8	3	Frame	Front gable	Queen Anne	c 1910	Arched window and recessed two story porch, clipped corner with decorative pendant at recessed two-story bay	C
10	2		Hipped	Italianate	c 1870		C
12/14	2	Frame	Hipped	Mid Century Vernacular	c 1880		C
110	2 1/2	Brick	Front gable	Vern. Victorian with Queen Anne influence	c 1885	Projecting side gable and two-story bays, stained glass attic window, stone hood molds, porch with turned posts, spindled frieze and baluster with fan-like brackets	C
204	2 1/2	Frame	Front gable	Vern. Victorian	c 1880	Full height	C
314	2	Brick	Hipped	Greek Revival	c 1835	Full height front and side brick pilasters with wooden caps, wide architrave, beaded dentils	C
316	3	Frame	Front gable	Queen Anne	c 1885	Diamond shingles in gables with flared edges, bracketed return eaves, corbeled chimney	C
318	2	Frame	Front gable with wing	Vern. Victorian	c 1880		C
326	2 1/2	Frame	Gable	Gothic Revival	c 1870	Overlapping side gables with projecting gable, decorative barge boards with dentils, wrap-around porch with turned posts, pedimented, dentilated entrance with stick style frieze and railing, double door with glass panels, triangular attic windows	C
13	2	Frame	Front gable with wing	Greek Revival	c 1850	Full front porch, turned post, spindled balusters, recessed bay	C
205	2	Frame	Gable with wing	Greek Revival	c 1855		C
313	2	Frame	Hipped with wing	Mid Century Vernacular	c 1860		C
315	2	Frame	Hipped	Mid Century Vern.	c 1875	Full front porch with spindled balustrade and beaded frieze	C
317	2	Frame	Front Gable with wing	Vern. Victorian	c 1885		C
319	2	Frame	Front Gable with wing	Vern. Victorian	c 1885		C

TOWANDA HISTORIC DISTRICT

Weston

Address	No. of Stories	Construction Material	Roof Design	Architectural Style	Date	Outstanding Features	Cont. or NC
2	2	Frame	Side gable	Greek Revival	c 1835	Architrave and fluted pilasters	C
4	2	Frame	Side gabled	Greek Revival	c 1835	Recessed entry, sidelights and decorative cornice	C
6	2	Frame	Front gable	Vern. Victorian	c 1835	Panel door, architrave pilasters around side porch	C

TOWANDA HISTORIC DISTRICT

Mix Avenue

Address	No. of Stories	Construction Material	Roof Design	Architectural Style	Date	Outstanding Features	Cont. or NC
4-6	2	Brick	Mansard	Second Empire	c1878	Mansard roof with projecting cornice, arched dormers, incised glass panels on entrance door	C
10	2	Frame	Front gable	Greek Revival	c 1869	Fluted porch posts	C
12	2	Frame	Front gable	Vern. Victorian	c 1890		C
16	2	Frame	Front gable	Italianate	c 1875		C
1	2	Frame	Front gable	Vern. Victorian	c 1854		C
5	3	Frame	Side gable	Princess Anne	c 1893	Oversized front dormer with circular window and fish scale shingles, full front porch with beaded frieze	C
7	3	Frame	Side gable	Princess Anne	c 1893		C
11	2	Frame	Center gable	Queen Anne	c 1885		C

TOWANDA HISTORIC DISTRICT

Chestnut Street

Address	No. of Stories	Construction Material	Roof Design	Architectural Style	Date	Outstanding Features	Cont. or NC
106	2	Frame	Side gable	Colonial Revival	c 1905		C
108	3	Brick	Pyramidal with cross gables	Romanesque with Queen Anne features	c 1891	Cut stone arched window, belt courses, fish scale shingles in gable, side porch with ornate wood columns and cornice, hipped dormer, variant of Palladian window, side porch with beaded balusters	C
200	2	Frame	Side gable	Gothic Revival	c 1857	Curvilinear barge boards, Gothic arched windows with decorative panels, front and side porch with sawn frieze, turned posts spindled balustrade, hood mold, diamond panes in door and sidelights	C
206	2	Frame	Hipped with wing	Italianate	c 1867	Double floor length front windows, double etched glass panels and surround on entrance door	C
208	2	Frame	Hipped	Mid Century Vernacular	C 1869	Full front porch with octagonal columns, sawn brackets, projecting one story side bay with portico	C
210	2	Frame	Hipped	Italianate	c 1865		C
212	2	Frame	Side gable	Vern. Victorian	c 1865	Modillions under eaves	C
214	2	Frame	Side gable	Vern. Victorian	C 1865		C
218	2	Frame	Side gable	Vern. Victorian	c 1865		C

TOWANDA HISTORIC DISTRICT

Chestnut Street

Address	No. of Stories	Construction Material	Roof Design	Architectural Style	Date	Outstanding Features	Cont. or NC
103	3	Frame	Pyramidal with intersecting gables	Queen Anne	c 1880	Two story projecting front porch, each with paired round columns, fish scale shingles in gables, oriel windows with stained glass window and carved panel above	C
105	2	Frame	Hipped	Mid Century Vernacular.	c 1865	Double columned wrap-around porch, door with pilasters, transom, side lights and cornice	C
107	2	Frame	Hipped	Mid Century Vernacular	c 1867		C
109	2	Frame	Hipped	Mid Century	c 1867	Unusual curved surround over front door with carved panel in arch, side porch with slender posts with stick work frieze	C
201	2	Frame	Hipped	Italianate	c 1860	Double tapered columns on wrap around porch, double windows, beaded glass transom and side lights	C
205	2	Frame	Hipped	Mid Century Vernacular	c 1865	Wrap-around front porch, split columns, decorative sawn frieze	C
207	3	Frame	Pyramidal	Italian Villa	c 1860	Porte cochere, leaded glass windows pedimented window heads	C
209	2	Frame	Hipped	Mid Century Vernacular	c 1865		C
211	2	Frame	Front Gable with wing	Greek Revival	c 1869	Wing porch with beveled posts, wide architrave, bracketed and dentillated eaves	C
213	2	Frame	Cross gable,	Vern. Victorian	c 1880		C
217	2	Frame	Side gable	Vern. Victorian	c 1867		C

TOWANDA HISTORIC DISTRICT

Huston Street

Address	No. of Stories	Construction Material	Roof Design	Architectural Style	Date	Outstanding Features	Cont. or NC
6	2	Frame	Hipped	Mid Century Vernacular	c 1870		C
8	2 1/2	Frame	Front gable	Queen Anne	c 1895	Columned and pedimented entry with decorative arched frieze	C
10	2	Frame	Hipped	Mid Century Vernacular	c 1870	Italian window hood molds, wide eaves, full front porch with turned posts spindled balustrade	C
12	2	Frame	Hipped with wing	Mid Century Vernacular	c 1872	Wide eaves, fluted columns on wrap around porch, spindled balustrade	C
14	2	Frame	Hipped with wing	Vern. Victorian	c 1880	Porch with hexagonal columns	C
22	3	Frame	Intersecting gables with mansard	Italian Villa	c 1872	Scrolled barge board on eaves, gabled dormers in mansard roof, arched windows, Gothic windows, entry porch with turned columns, bull's eye window	C
24	2 1/2	Frame	Intersecting gable	Colonial Revival	c 1920	Dentilated gable, decorative chimney, Palladian type windows, pedimented doorway, triangular bay, fluted pilasters	C
7	1 1/2	Frame	Side Gable	Bungalow	c 1920	Patterned brick chimney, cut stone foundation	C
9	2	Frame	Side Gable	Colonial Revival	c 1918	End chimneys and pilasters at corners, portico with hipped roof	C
11	2	Frame	Hipped	Italianate	c 1875	Wrap around porch with bevelled columns, stick style baluster	C
15	2	Frame	Front gable with wing	Gothic Revival	c 1870	Decorative truss in gable with pendant	C
17	2	Frame	Hipped	Mid Century	c 1870	Pedimented arched entry	C
19	2	Frame	Intersecting gables	Vern. Victorian	c 1890		C
21	2	Frame	Hipped	Mid Century Vernacular	c 1875		C
23	2 1/2	Frame	Side gables	Vern. Victorian	c 1880	Front gable with fish scale shingles, porch with beaded frieze and spindles, sawn brackets	C
25	2	Frame	Hipped	Mid Century Vernacular	c 1875		C
27	2	Frame	Hipped	Four Square	c 1910		NC

TOWANDA HISTORIC DISTRICT

Barstow

Address	No. of Stories	Construction Material	Roof Design	Architectural Style	Date	Outstanding Features	Cont. or NC
10	2	Frame	Cross gable	Vern. Victorian	c 1880		NC
3	2	Frame Clapboard	Front gable with wing	Vern. Victorian	c 1875		C
7	2	Frame	Side gable	Vern. Victorian	c 1880		C

TOWANDA HISTORIC DISTRICT

Walnut

Address	No. of Stories	Construction Material	Roof Design	Architectural Style	Date	Outstanding Features	Cont. or NC
14	1	Frame	Side Gable	Ranch	c 1960		NC
12	1	Frame	Hipped		c 1960		NC

31	2	Frame	Gable with wing	Vern. Victorian	c 1880	Portico with round columns and gabled roof	C
27-25	2	Frame	Cross gable	Vern. Victorian	c 1890		C
15	1	Frame	Gable	Ranch	c 1950		NC
5	2	Frame	Front gable with wing	Vern. Victorian	c 1890		C
3	2	Frame	Side gable	Vern. Victorian	c 1885		NC

TOWANDA HISTORIC DISTRICT

Locust

Address	No. of Stories	Construction Material	Roof Design	Architectural Style	Date	Outstanding Features	Cont. or NC
16	1	Frame	Gable	Craftsman	c 1910		C
18	1	Frame	Gable	Craftsman	c 1910		C
24	2	Frame	Cross gable	Colonial Revival	c 1915		C
26	2	Frame	Gable with wing	Vern. Victorian	c 1890		C

11	3	Frame	Hipped gable	Queen Anne	c 1895	Ornate corbeled brick chimney, gabled second story porch, gable 2 story bay and front porch, turned posts and archaded frieze	C
13	2	Frame	Gable	Queen Anne	c 1900	Shingled front gable with oval Palladian window	C
15	2	Frame	Gable	Queen Anne	c 1896	Wide porches on both sides of central bay, paired columns on cut stone piers, porte cochere, second story porch, architrave below eaves with carved swags	C
25	2	Frame	Side Gable	Queen Anne	c 1898	Full front porch, double Corinthian columns, spindled railing and frieze, recessed side gable, decorative dormer windows	C

The Riverside Cemetery, located east of William Street and south of Walnut Street, is the one contributing site in the district. It contains gravestones interspersed with monuments from the early nineteenth century to the late twentieth century. Most burials date to the nineteenth century. David Wilmot is buried in this cemetery.

UNITED STATES DEPARTMENT OF THE INTERIOR
NATIONAL PARK SERVICE

NATIONAL REGISTER OF HISTORIC PLACES
EVALUATION/RETURN SHEET

REQUESTED ACTION: NOMINATION

PROPERTY NAME: Towanda Historic District

MULTIPLE NAME:

STATE & COUNTY: PENNSYLVANIA, Bradford

DATE RECEIVED: 3/23/92 DATE OF PENDING LIST: 4/10/92
DATE OF 16TH DAY: 4/26/92 DATE OF 45TH DAY: 5/07/92
DATE OF WEEKLY LIST:

REFERENCE NUMBER: 92000394

NOMINATOR: STATE

REASONS FOR REVIEW:

APPEAL: N DATA PROBLEM: N LANDSCAPE: N LESS THAN 50 YEARS: N
OTHER: N PDIL: N PERIOD: N PROGRAM UNAPPROVED: N
REQUEST: N SAMPLE: N SLR DRAFT: NATIONAL: N

COMMENT WAIVER: N

ACCEPT RETURN REJECT 5/7/92 DATE

ABSTRACT/SUMMARY COMMENTS:

*Historically & architecturally significant district
representing the growth of this county seat & commercial
center from the early 19th through early 20th
centuries*

RECOM./CRITERIA accept A, B, C
REVIEWER Patrick Adams
DISCIPLINE Historian
DATE 5/7/92

DOCUMENTATION see attached comments Y/N see attached SLR Y/N

CLASSIFICATION

count resource type

STATE/FEDERAL AGENCY CERTIFICATION

FUNCTION

historic current

DESCRIPTION

architectural classification
 materials
 descriptive text

SIGNIFICANCE

Period Areas of Significance--Check and justify below

Specific dates Builder/Architect
Statement of Significance (in one paragraph)

summary paragraph
 completeness
 clarity
 applicable criteria
 justification of areas checked
 relating significance to the resource
 context
 relationship of integrity to significance
 justification of exception
 other

BIBLIOGRAPHY

GEOGRAPHICAL DATA

acreage verbal boundary description
 UTM's boundary justification

ACCOMPANYING DOCUMENTATION/PRESENTATION

sketch maps USGS maps photographs presentation

OTHER COMMENTS

Questions concerning this nomination may be directed to

_____ Phone _____

Signed _____ Date _____



110 Bridge - Towards Historic District

1

Bradford Co
PA

1



314 State Towanda Historic District
2 Bradford Co PA

2



106 River Towanda Hist. Dist.

3

Bradford Co PA

3



14 Second Towanda Hist. Dist.
4 Bradford Co PA

4



109 York Towards Hist. Dist.
5 Bradford Co PA

5



208 Third Towanda Hist. Dist.
6 Bradford Co PA

6



21 Main
7

Towards Hist. Dist.
Bradford Co PA

7



22 William Towanda Hist. Dist.
8 Bradford Co PA

8



401 - 429 Main Towards Hist.
9 Bradford Co PA

9



302 Third

Towards Hist. Dist.

10

Bradford Co PA

10



200 Chestnut

11

Towanda Hist. Dist.

Bradford Co PA

11



227 Poplar Towanda Hist. Dist.
12 Bradford Co PA



304 York
13

Towanda Hist Dist
Bradford Co Pa

13



305 York Towanda Hist. Dist.
#14 Bradford Co PA

M



308 York
#15

Towanda Historic District
Bradford Co PA

15



BERN FURNITURE

416 Main Towanda Hist. Dist.

16

Bradford Co PA

#16



311 York

17

Towards Hist. Dist.

Bradford Co PA

17



KEYSTONE THEATRE

FRISAT 7&9 THUR SUN-THUR 730
HOME ALONE

601 Main Towanda Hist. Dist.
18 Bradford Co PA

18



1 Main

Towanda Hist. Dist.

19

19

Bedford Co PA



428 Main Towards Historic District
#20 Bradford Co PA

DE



105 Main
#21

Towanda Hist. Dist.
Bedford Co PA

21



WIDMANN
HEALTH & BEAUTY AIDS

322 Main
#22

Towanda Hist. Dist.
Bradford Co PA

22



217/301 York

#23

Towanda Historic District

Bradford Co PA



118 York Towanda Hist. Dist.

#24

Bradford Co PA



106 Main Towanda Hist. Dist.

#25

Bradford Co PA

25



400 Block of Bridge Towards Hist. Dist.
26
Bedford Co PA

26



Courthouse Towanda Hist. Dist
#27 Bradford Co PA

DEL-CO



State + Main

Towanda Hist. Dist.

#28

Bradford Co PA

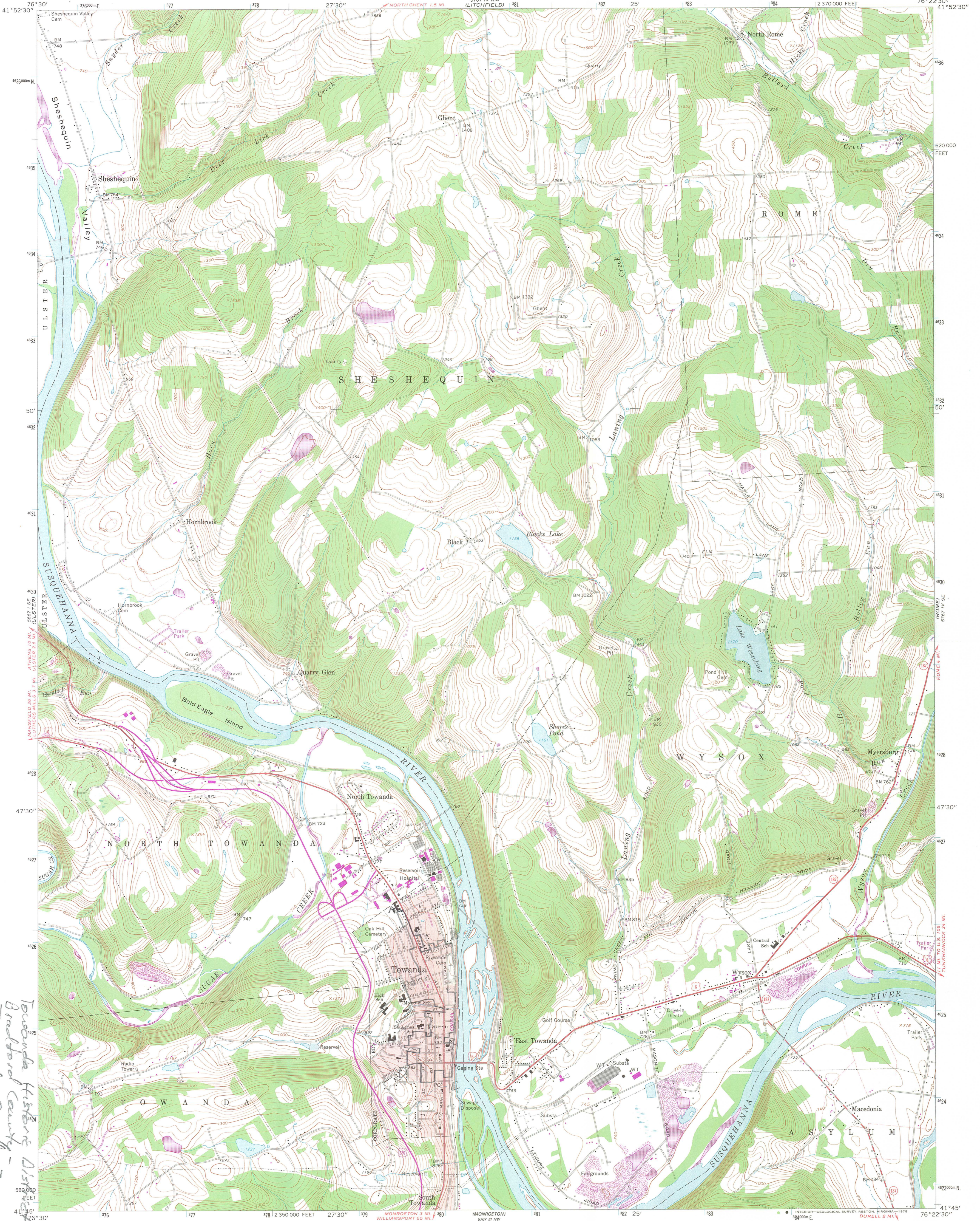


Main - 400 Block, even side Towanda Hist. Dist.
#29
Bradford Co PA



Main - 500 Block, odd side Towanda Hist. Dist.
30

Bradford Co PA



*Towanda Historic District
Bradford County - 2000
A E 37950 N 4626270
B E 380120 N 4625950
C E 380100 N 4624340
D E 379430 N 4624480*

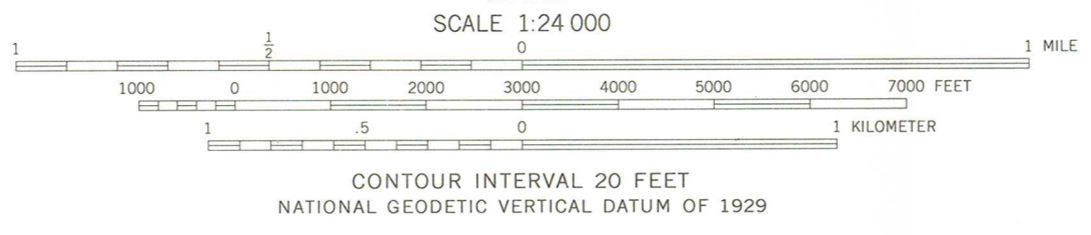
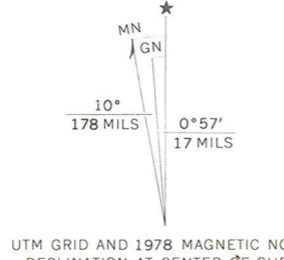
Mapped, edited, and published by the Geological Survey

Control by USGS and USC&GS
Topography by photogrammetric methods from aerial photographs taken 1966. Field checked 1967

Polyconic projection. 1927 North American datum
10,000-foot grid based on Pennsylvania coordinate system, north zone
1000-meter Universal Transverse Mercator grid ticks, zone 18, shown in blue

Fine red dashed lines indicate selected fence and field lines where generally visible on aerial photographs. This information is unchecked
Red tint indicates area in which only landmark buildings are shown

Revisions shown in purple compiled in cooperation with the state of Pennsylvania agencies from aerial photographs taken 1976
This information not field checked. Map edited 1978



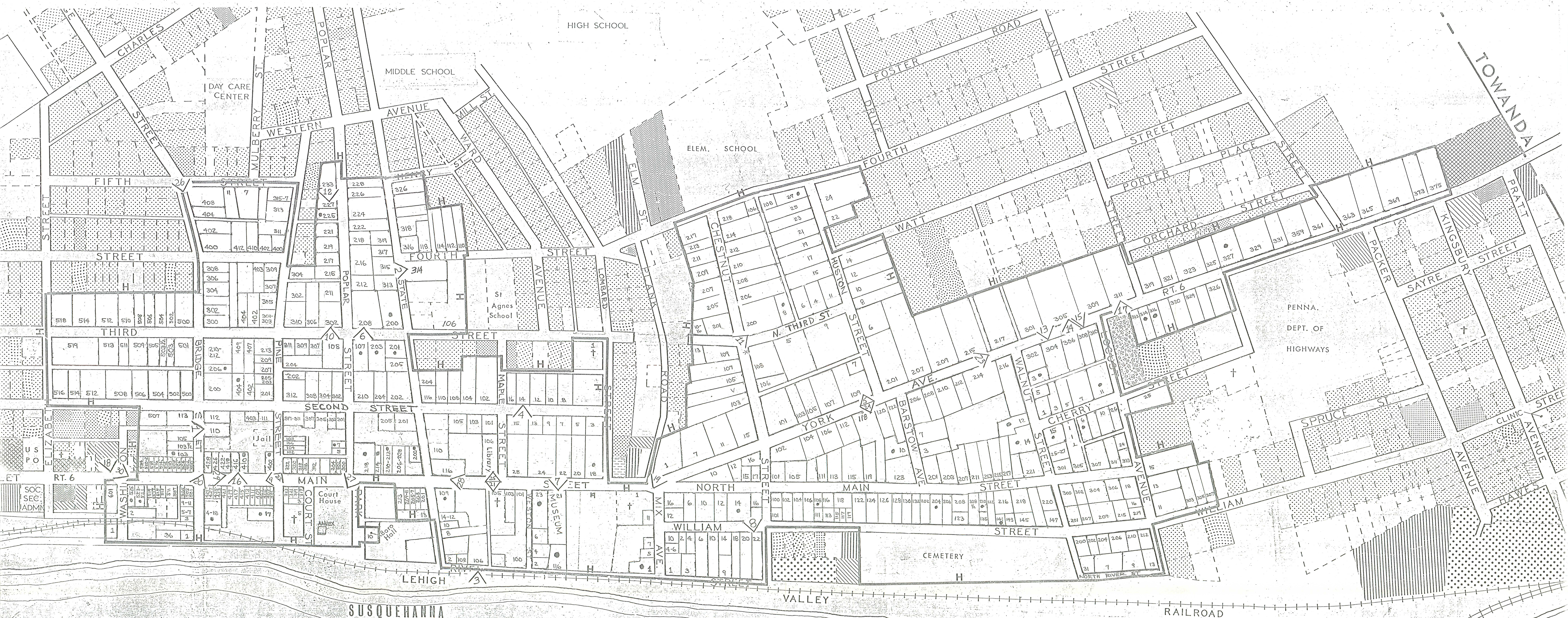
ROAD CLASSIFICATION

Primary highway, all weather, hard surface	Light-duty road, all weather, improved surface
Secondary highway, all weather, hard surface	Unimproved road, fair or dry weather
U. S. Route	State Route

TOWANDA, PA.
N4145—W7622.5/7.5

1967
PHOTOREVISED 1978
AMS 5767 IV SW—SERIES V831

THIS MAP COMPLIES WITH NATIONAL MAP ACCURACY STANDARDS
FOR SALE BY U. S. GEOLOGICAL SURVEY, RESTON, VIRGINIA 22092
A FOLDER DESCRIBING TOPOGRAPHIC MAPS AND SYMBOLS IS AVAILABLE ON REQUEST



Towanda Historic District
 RIVER
 LEGEND
 Bradford County Pennsylvania

	Single Family		Local Business
	Two Family		General Commercial
	Multi-Family		Automotive
	Trailer		Highway Commercial
	Rural - Farm		INDUSTRIAL Light

H ————— Designates Boundary of Proposed NATIONAL REGISTER HISTORIC DISTRICT

● Non-Contributing Structures indicated by

▲ Photo Number and Direction Indicated by

Scale in feet
 200 0 200 400

APRIL 1968
 REVISED: DECEMBER 1984
 REVISED: MARCH 1989

County of Bradford



WILLIAM T. MCNETT
ROBERT P. MORTON
RICHARD A. EATON
County Commissioners

JONATHAN P. FOSTER
County Solicitor

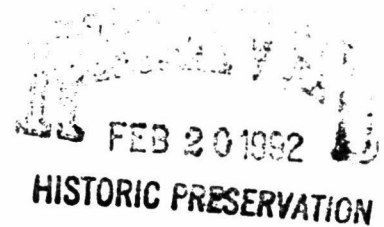
GARY L. WOOD
Chief Clerk

Commissioners' Office Court House

TOWANDA, PA. 18848
TELEPHONE: 717-265-5700

February 12, 1992

Commonwealth of Pennsylvania
Pennsylvania Historical and Museum Commission
Mr. Brent D. Glass
P.O. Box 1026
Harrisburg, PA 17108-1026

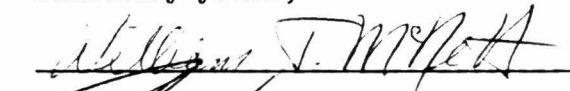
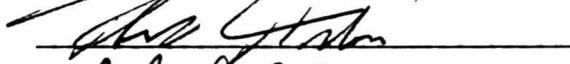



Dear Mr. Glass:

The Bradford County Commissioners object to the inclusion of The Towanda Historic District in The National Register of Historic Places.

Our objection is based on owning three properties in that area and receiving no benefits while having certian restrictions placed upon those properties.

Sincerely yours,




The Bradford County Commissioners

WTM/ljm



RECEIVED
MAR 23 1992

NATIONAL
REGISTER

Commonwealth of Pennsylvania
Pennsylvania Historical and Museum Commission
Bureau for Historic Preservation
Post Office Box 1026
Harrisburg, Pennsylvania 17108-1026

March 12, 1992

Carol Shull, Chief of Registration
National Register of Historic Places
U.S. Department of the Interior
1100 L Street, N.W.
Washington, DC 20240

Re: National Register
Nomination Forms

Dear Ms. Shull:

The attached list of National Register nomination forms are being submitted for your review and response.

The proposed action is:

- listing in the National Register
 determination of eligibility (owner objection)

If you have any questions regarding the nominations, please call us at (717) 783-8946.

Sincerely,

A handwritten signature in cursive script, appearing to read "Dan G. Deibler".

Dan G. Deibler, Chief
Division of Preservation
Service

Enclosures
DGD/dlc

St. Anthony de Padua Parish School, Philadelphia

Slate Hill Cemetery, Bucks County

George F. Schlicher Hotel, Lehigh County

John Zeigler Farmhouse, Adams County

*Jacob Dick Farm, Berks County

*John Gehman Farm, Berks County

Birchrunville Historic District, Chester County

Mine 40 Historic District, Cambria County

Brown-Moore Blacksmith Shop, Fayette County

Towanda Historic District, Bradford County.

Saltsburg Historic District, Indiana County

**Robertsdale Historic District, Huntingdon County

*These two nominations are submitted as part of the "Farms in Berks County, Pennsylvania" multiple property listing. The Multiple Property Documentation Form for this multiple property group is enclosed.

**This nomination is submitted as part of "The Industrial Resources of Huntingdon County, Pennsylvania, between 1780 and 1939" multiple property listing. The Multiple Property Documentation Form for this multiple property group was previously submitted to your office.