

**NATIONAL REGISTER OF HISTORIC PLACES
INVENTORY - NOMINATION FORM**

(Type all entries - complete applicable sections)

STATE: PENNSYLVANIA	
COUNTY: MONTGOMERY	
FOR NPS USE ONLY	
ENTRY NUMBER JUN 19 1973	DATE

1. NAME

COMMON:
LONG MEADOW FARM

AND/OR HISTORIC:
PLANK HOUSE AND BARN (CURRENT NAME)

2. LOCATION

STREET AND NUMBER: *N W of Schwenksville on Pa. 73*
ROUTE 73

CITY OR TOWN:
FREDERICK *Schwenksville*

STATE PENNSYLVANIA	CODE 42	COUNTY: MONTGOMERY	CODE 091
-----------------------	------------	-----------------------	-------------

3. CLASSIFICATION

CATEGORY (Check One)	OWNERSHIP	STATUS	ACCESSIBLE TO THE PUBLIC
<input type="checkbox"/> District <input type="checkbox"/> Site <input type="checkbox"/> Object <input checked="" type="checkbox"/> Building <input type="checkbox"/> Structure <input type="checkbox"/> Object	<input type="checkbox"/> Public <input checked="" type="checkbox"/> Private <input type="checkbox"/> Both	<input checked="" type="checkbox"/> Occupied <input type="checkbox"/> Unoccupied <input type="checkbox"/> Preservation work in progress	Yes: <input type="checkbox"/> Restricted <input type="checkbox"/> Unrestricted <input checked="" type="checkbox"/> No
PRESENT USE (Check One or More as Appropriate)			
<input type="checkbox"/> Agricultural <input type="checkbox"/> Commercial <input type="checkbox"/> Educational <input type="checkbox"/> Entertainment	<input type="checkbox"/> Government <input type="checkbox"/> Industrial <input type="checkbox"/> Military <input type="checkbox"/> Museum	<input type="checkbox"/> Park <input checked="" type="checkbox"/> Private Residence <input type="checkbox"/> Religious <input type="checkbox"/> Scientific	<input type="checkbox"/> Transportation <input type="checkbox"/> Other (Specify) _____ _____ _____

4. OWNER OF PROPERTY

OWNER'S NAME:
JOHN PLANK

STREET AND NUMBER:
ROUTE 73

CITY OR TOWN:
FREDERICK

STATE: PENNSYLVANIA	CODE 42
------------------------	------------

5. LOCATION OF LEGAL DESCRIPTION

COURTHOUSE, REGISTRY OF DEEDS, ETC.:
MONTGOMERY COUNTY COURTHOUSE

STREET AND NUMBER:
AIRY AND SWEDE STREETS

CITY OR TOWN:
NORRISTOWN

STATE: PENNSYLVANIA	CODE 42
------------------------	------------

6. REPRESENTATION IN EXISTING SURVEYS

TITLE OF SURVEY:

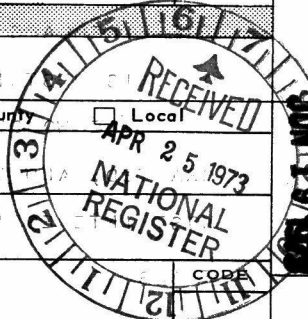
DATE OF SURVEY: Federal State County Local

DEPOSITORY FOR SURVEY RECORDS:

STREET AND NUMBER:

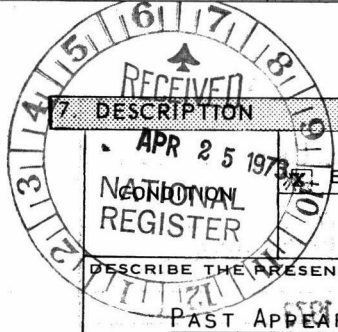
CITY OR TOWN:

STATE:



STATE: PENNSYLVANIA	ENTRY NUMBER: JUN 19 1973	DATE
COUNTY: MONTGOMERY	FOR NPS USE ONLY	

SEE INSTRUCTIONS



7 DESCRIPTION	
APR 25 1978	
NATIONAL REGISTER	
DESCRIBE THE PRESENT AND ORIGINAL (if known) PHYSICAL APPEARANCE	

Excellent <input type="checkbox"/> Good <input type="checkbox"/> Fair <input type="checkbox"/> Deteriorated <input type="checkbox"/> Ruins <input type="checkbox"/> Unexposed <input type="checkbox"/>	
(Check One)	
<input checked="" type="checkbox"/> Altered	<input type="checkbox"/> Unaltered
(Check One)	
<input type="checkbox"/> Moved	<input checked="" type="checkbox"/> Original Site

PAST APPEARANCE:

w by past house?

The PLANK HOUSE WAS A 2½ STORY COLONIAL BRICK DWELLING PROBABLY BUILT IN THE MID 18TH CENTURY AND EMPLOYED THE GERMANIC PRE-METRIC STANDARD OF MEASUREMENT. THE 3 BAY FRONT WITH CENTRAL HALLWAY, SYMMETRICAL FACADE, AND USE OF BRICK WITH GLAZED HEADERS AT THE GABLES WERE VERY ATYPICAL FOR THE AREA AND PERIOD. IT HAD A GABLED ROOF, END CHIMNEYS AND A BOXED CORNICE WITH RETURN.

THE FLOOR PLAN CONSISTED OF A CENTRAL HALLWAY WITH A STAIRCASE AT THE FAR END AND TWO ROOMS ON EITHER SIDE. THERE WERE TWO FIRE PLACES DOWNSTAIRS, (SEE FLOOR PLAN) ONE DIAGONALLY LOCATED AND THE OTHER AGAINST THE OPPOSITE GABLE WALL. THIS PATTERN WAS REPEATED UPSTAIRS.

A 2½ STORY, GABLED ADDITION WAS ATTACHED PERPENDICULARLY TO THE REAR OF THE MAIN SECTION AND CONTAINED BEDROOMS AND A LARGE KITCHEN WITH A BRICK WALK-IN FIREPLACE AT THE GABLE END. THE DATE OF ITS CONSTRUCTION IS NOT SPECIFICALLY KNOWN BUT WAS PROBABLY BUILT IN THE MID-19TH CENTURY. IT WAS ALSO BUILT WITH GLAZED HEADERS, RANDOM STRINGER COURSES, AND A BOXED CORNICE WITH RETURN. PHOTOGRAPHS TAKEN BEFORE 1915 SHOW THAT THIS ADDITION HAD AN EXCEPTIONALLY WIDE "FRENCH" DOOR WITH TRANSOM AND A SECOND STORY GALLERY THAT WAS SUPPORTED BY THE BRICK OF THE FIRST LEVEL AND CANTILEVERED OVER THE INTERIOR LONGITUDINAL BEAM.

TO THE LEFT OF THE LARGE WALK-IN COOKING FIREPLACE WAS A NARROW STAIRCASE LEADING TO THE SECOND FLOOR. IMMEDIATELY ABOVE THE WALK-IN FIREPLACE WAS A GEORGIAN FIREPLACE WITH STOVE. THIS FIREPLACE WAS ORIGINALLY IN THE SOUTH CORNER OF THE ROOM WHEN THE SECOND STORY GALLERY WAS INTACT. THE INTRICATE DETAIL OF THE FIREPLACE WAS REPEATED IN THE CHAIR RAIL ALONG THE WALLS OF THIS UPSTAIRS ROOM.

THE WOODWORK AND PANELING THROUGHOUT THE HOUSE WAS FINELY CRAFTED, AND THE SECOND FLOOR WINDOWS OF THE MAIN SECTION WERE MOST INTERESTING BECAUSE OF THE FLUTED PANELS OF THE WINDOW frames.

FRAMS

SEE INSTRUCTIONS

NATIONAL REGISTER OF HISTORIC PLACES
INVENTORY - NOMINATION FORM

(Continuation Sheet)

STATE	
PENNSYLVANIA	
COUNTY	
MONTGOMERY	
FOR NPS USE ONLY	
ENTRY NUMBER	DATE
	JUN 4 1973

(Number all entries)

FRAMES (PHOTOGRAPH #3).

THE PLANK BARN (PHOTOGRAPH #4) WAS A FRAME AND STONE BOTTOM BARN WITH VERY SMALL WINDOWS AND PURLIN ROOF WITH KICKED EAVES. THE FLOOR PLAN OF THIS BARN TYPE CONSISTED OF A CENTRAL THRESHING AREA WITH STABLING AREAS ON EITHER SIDE. THE STABLING PORTIONS HAD A COBBLE STONE FLOOR, AND ONE OF THE AREAS WAS SOMEWHAT LOWER THAN THE OTHER. ABOVE THE STABLING AREAS WERE MOWS OR LOFTS FOR THE STORAGE OF HAY AND GRAIN. THE FRAMED TRUSS WAS COMMON IN GERMANIC ROOF STRUCTURE AND OCCURRED IN THE HOUSE.

PRESENT APPEARANCE:

ALTERATIONS, ESPECIALLY TO THE EXTERIOR OF THE PLANK HOUSE, ARE EVIDENT WHEN COMPARISONS ARE MADE OF PHOTOGRAPHS 1 AND 2. THE MAIN STRUCTURE HAS BEEN STUCCOED AND WHITEWASHED AND WINDOW FRAMES ENLARGED, BUT THE BOXED CORNICE AND ROOFLINE ARE UNALTERED. THE SECOND FLOOR GALLERY OF THE NEWER ADDITION HAS BEEN ELIMINATED, THE FENESTRATION CONSIDERABLY ALTERED, AND THIS PORTION ALSO STUCCOED AND WHITEWASHED.

INTERIOR WOODWORK, ROOF STRUCTURE AND BEADED CEILINGS ARE LARGELY EXTANT EVEN THOUGH ADDITIONS AND RENOVATIONS HAVE BEEN MADE.

THE MID-18TH CENTURY PLANK BARN REMAINS IN RELATIVELY GOOD CONDITION WITH ITS BASIC THREE BAY FLOOR PLAN AND FRAME TRUSS ROOF STRUCTURE INTACT. A MAJOR CHANGE HAS BEEN THE ADDITION OF A RECENT SHINGLE ROOF AND SHINGLES TO ONE OF THE GABLE ENDS.



3. SIGNIFICANCE

PERIOD (Check One or More as Appropriate)

- Pre-Columbian
- 15th Century
- 16th Century
- 17th Century
- 18th Century
- 19th Century
- 20th Century

SPECIFIC DATE(S) (If Applicable and Known)

AREAS OF SIGNIFICANCE (Check One or More as Appropriate)

- | | | | |
|--|---|--|--|
| <input type="checkbox"/> Aboriginal | <input type="checkbox"/> Education | <input type="checkbox"/> Political | <input type="checkbox"/> Urban Planning |
| <input type="checkbox"/> Prehistoric | <input type="checkbox"/> Engineering | <input type="checkbox"/> Religion/Philosophy | <input type="checkbox"/> Other (Specify) _____ |
| <input type="checkbox"/> Historic | <input type="checkbox"/> Industry | <input type="checkbox"/> Science | _____ |
| <input checked="" type="checkbox"/> Agriculture | <input type="checkbox"/> Invention | <input type="checkbox"/> Sculpture | _____ |
| <input checked="" type="checkbox"/> Architecture | <input type="checkbox"/> Landscape Architecture | <input type="checkbox"/> Social/Humanitarian | _____ |
| <input type="checkbox"/> Art | <input type="checkbox"/> Literature | <input type="checkbox"/> Theater | _____ |
| <input type="checkbox"/> Commerce | <input type="checkbox"/> Military | <input type="checkbox"/> Transportation | _____ |
| <input type="checkbox"/> Communications | <input type="checkbox"/> Music | | |
| <input type="checkbox"/> Conservation | | | |

STATEMENT OF SIGNIFICANCE

THE PLANK HOUSE AND BARN ARE FINE EXAMPLES OF GERMANIC HOME-STEAD CONSTRUCTION. THE HOUSE IS OF PARTICULAR ARCHITECTURAL VALUE BECAUSE IT COMBINES BOTH GERMANIC AND GEORGIAN DESIGN. IT FOLLOWS THE GERMANIC SYSTEM OF MEASUREMENT BASED ON A PRE-METRIC FORMULA, AND, AT THE SAME TIME, ADOPTS GEORGIAN CHARACTERISTICS SUCH AS THE USE OF BRICK, BOXED CORNICE, SYMMETRICAL FACADE AND INTERIOR WOODWORK. THIS WOULD SUGGEST THAT A CONSCIOUS EFFORT WAS MADE BY PENNSYLVANIA GERMANS TO ADAPT TO THE STYLE AND CULTURE OF ENGLISH PHILADELPHIA. THE PLANK HOUSE POSSIBLY REPRESENTS ONE OF THE EARLIEST ATTEMPTS TO BLEND STYLES BY THE GERMANIC POPULATION OF MONTGOMERY COUNTY. THE BARN IS TYPICAL OF EARLY GERMANIC BOTTOM BARN CONSTRUCTION THAT PRECEDED THE LATER BANK BARN DESIGN IN THIS AREA.

SEE INSTRUCTIONS



9 MAJOR BIBLIOGRAPHICAL REFERENCES

BRUMBAUGH, G. EDWIN. "COLONIA ARCHITECTURE OF THE PENNSYLVANIA GERMANS," THE PENNSYLVANIA GERMAN SOCIETY, PROCEEDINGS AND ADDRESSES..., 1930. NORRISTOWN, PA.: NORRISTOWN HERALD, 1933. VOL. XLI, PP. III, 60; PLATE 105.

DORNBUSCH, CHARLES H. PENNSYLVANIA GERMAN BARNS. ALLENTOWN, PA., 1958.

HUNSICKER, CLIFTON S. MONTGOMERY COUNTY, PA.: A HISTORY. 3 VOL. NEW YORK, CHICAGO: LEWIS HISTORICAL PUBLISHING CO., 1923. PP. (2), 416, ILL.; 340, ILL.; 341-717, ILL.

10 GEOGRAPHICAL DATA

LATITUDE AND LONGITUDE COORDINATES DEFINING A RECTANGLE LOCATING THE PROPERTY			OR	LATITUDE AND LONGITUDE COORDINATES DEFINING THE CENTER POINT OF A PROPERTY OF LESS THAN TEN ACRES		
CORNER	LATITUDE	LONGITUDE		LATITUDE	LONGITUDE	
	Degrees Minutes Seconds	Degrees Minutes Seconds		Degrees Minutes Seconds	Degrees Minutes Seconds	
NW	40 ° 18 ' 36 "	75 ° 32 ' 29 "		0	0	
NE	40 ° 18 ' 36 "	75 ° 32 ' 16 "				
SE	40 ° 18 ' 26 "	75 ° 32 ' 16 "				
SW	40 ° 18 ' 26 "	75 ° 32 ' 29 "				

APPROXIMATE ACREAGE OF NOMINATED PROPERTY: **13 ACRES**

LIST ALL STATES AND COUNTIES FOR PROPERTIES OVERLAPPING STATE OR COUNTY BOUNDARIES

STATE:	CODE	COUNTY:	CODE



11 FORM PREPARED BY

NAME AND TITLE: PENNSYLVANIA REGISTER OF HISTORIC SITES AND LANDMARKS

ORGANIZATION: PENNSYLVANIA HISTORICAL AND MUSEUM COMMISSION DATE: JUNE, 1972

STREET AND NUMBER: Box 1026

CITY OR TOWN: HARRISBURG STATE: PENNSYLVANIA CODE: 42

12 STATE LIAISON OFFICER CERTIFICATION NATIONAL REGISTER VERIFICATION

As the designated State Liaison Officer for the National Historic Preservation Act of 1966 (Public Law 89-665), I hereby nominate this property for inclusion in the National Register and certify that it has been evaluated according to the criteria and procedures set forth by the National Park Service. The recommended level of significance of this nomination is:

National State Local

Name: [Signature] State Liaison Officer

Title: Executive Director, Pa. Hist. and Museum Commission

Date: 4/19/73

I hereby certify that this property is included in the National Register.

[Signature]
Chief, Office of Archeology and Historic Preservation

Date: 6/19/73

ATTEST: [Signature]
Keeper of The National Register

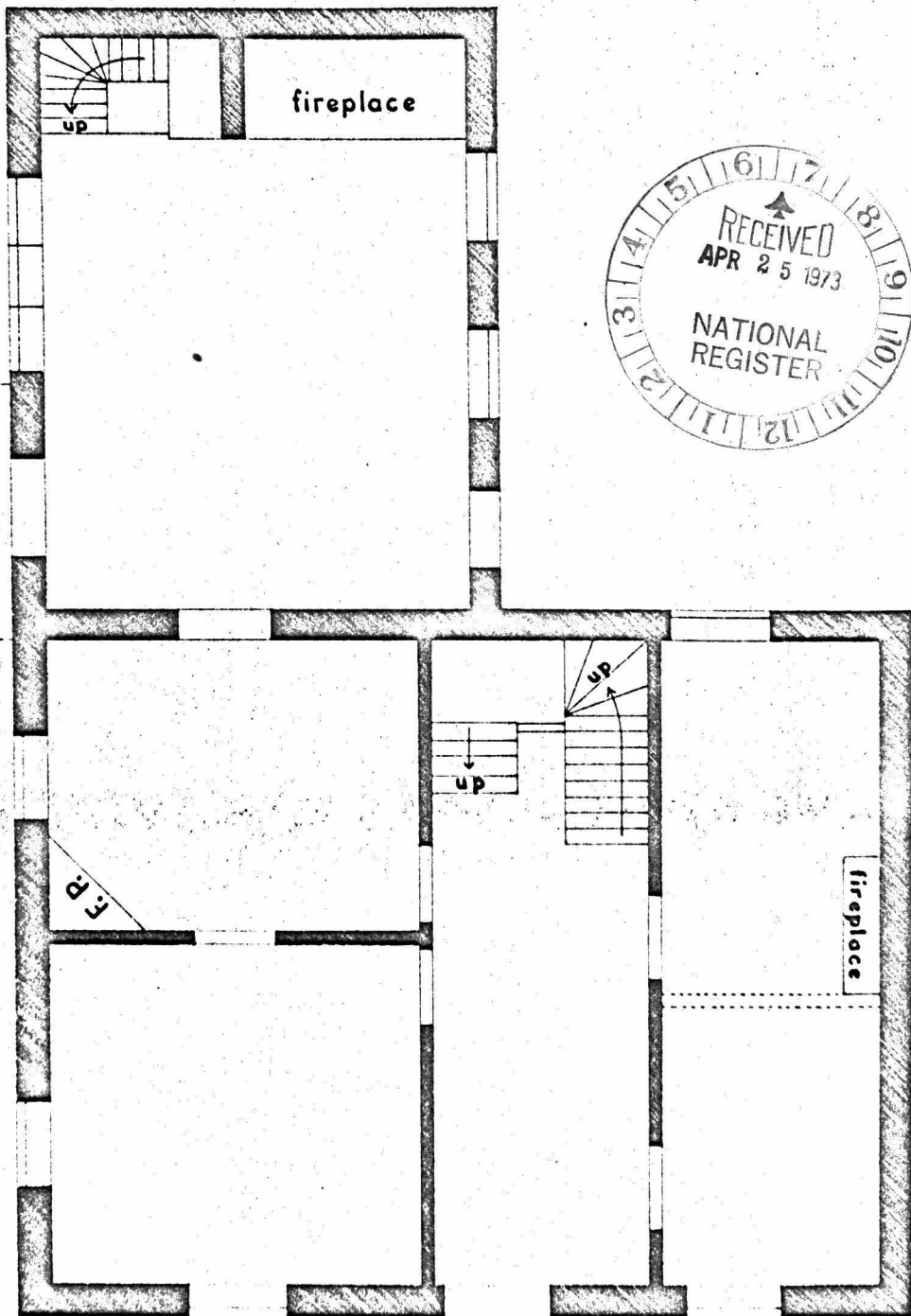
Date: 6 14 73

SEE INSTRUCTIONS

① 18/45330/4462/160
② 18/45330/4462/160
③ 18/45330/4462/160
④ 18/45330/4462/160
⑤ 18/45330/4462/160
⑥ 18/45330/4462/160
⑦ 18/45330/4462/160
⑧ 18/45330/4462/160
⑨ 18/45330/4462/160
⑩ 18/45330/4462/160
⑪ 18/45330/4462/160
⑫ 18/45330/4462/160
⑬ 18/45330/4462/160
⑭ 18/45330/4462/160
⑮ 18/45330/4462/160
⑯ 18/45330/4462/160
⑰ 18/45330/4462/160
⑱ 18/45330/4462/160
⑲ 18/45330/4462/160
⑳ 18/45330/4462/160
㉑ 18/45330/4462/160
㉒ 18/45330/4462/160
㉓ 18/45330/4462/160
㉔ 18/45330/4462/160
㉕ 18/45330/4462/160
㉖ 18/45330/4462/160
㉗ 18/45330/4462/160
㉘ 18/45330/4462/160
㉙ 18/45330/4462/160
㉚ 18/45330/4462/160
㉛ 18/45330/4462/160
㉜ 18/45330/4462/160
㉝ 18/45330/4462/160
㉞ 18/45330/4462/160
㉟ 18/45330/4462/160
① 18/45330/4462/160
② 18/45330/4462/160
③ 18/45330/4462/160
④ 18/45330/4462/160
⑤ 18/45330/4462/160
⑥ 18/45330/4462/160
⑦ 18/45330/4462/160
⑧ 18/45330/4462/160
⑨ 18/45330/4462/160
⑩ 18/45330/4462/160
⑪ 18/45330/4462/160
⑫ 18/45330/4462/160
⑬ 18/45330/4462/160
⑭ 18/45330/4462/160
⑮ 18/45330/4462/160
⑯ 18/45330/4462/160
⑰ 18/45330/4462/160
⑱ 18/45330/4462/160
⑲ 18/45330/4462/160
⑳ 18/45330/4462/160
㉑ 18/45330/4462/160
㉒ 18/45330/4462/160
㉓ 18/45330/4462/160
㉔ 18/45330/4462/160
㉕ 18/45330/4462/160
㉖ 18/45330/4462/160
㉗ 18/45330/4462/160
㉘ 18/45330/4462/160
㉙ 18/45330/4462/160
㉚ 18/45330/4462/160
㉛ 18/45330/4462/160
㉜ 18/45330/4462/160
㉝ 18/45330/4462/160
㉞ 18/45330/4462/160
㉟ 18/45330/4462/160
① 18/45330/4462/160
② 18/45330/4462/160
③ 18/45330/4462/160
④ 18/45330/4462/160
⑤ 18/45330/4462/160
⑥ 18/45330/4462/160
⑦ 18/45330/4462/160
⑧ 18/45330/4462/160
⑨ 18/45330/4462/160
⑩ 18/45330/4462/160
⑪ 18/45330/4462/160
⑫ 18/45330/4462/160
⑬ 18/45330/4462/160
⑭ 18/45330/4462/160
⑮ 18/45330/4462/160
⑯ 18/45330/4462/160
⑰ 18/45330/4462/160
⑱ 18/45330/4462/160
⑲ 18/45330/4462/160
⑳ 18/45330/4462/160
㉑ 18/45330/4462/160
㉒ 18/45330/4462/160
㉓ 18/45330/4462/160
㉔ 18/45330/4462/160
㉕ 18/45330/4462/160
㉖ 18/45330/4462/160
㉗ 18/45330/4462/160
㉘ 18/45330/4462/160
㉙ 18/45330/4462/160
㉚ 18/45330/4462/160
㉛ 18/45330/4462/160
㉜ 18/45330/4462/160
㉝ 18/45330/4462/160
㉞ 18/45330/4462/160
㉟ 18/45330/4462/160
① 18/45330/4462/160
② 18/45330/4462/160
③ 18/45330/4462/160
④ 18/45330/4462/160
⑤ 18/45330/4462/160
⑥ 18/45330/4462/160
⑦ 18/45330/4462/160
⑧ 18/45330/4462/160
⑨ 18/45330/4462/160
⑩ 18/45330/4462/160
⑪ 18/45330/4462/160
⑫ 18/45330/4462/160
⑬ 18/45330/4462/160
⑭ 18/45330/4462/160
⑮ 18/45330/4462/160
⑯ 18/45330/4462/160
⑰ 18/45330/4462/160
⑱ 18/45330/4462/160
⑲ 18/45330/4462/160
⑳ 18/45330/4462/160
㉑ 18/45330/4462/160
㉒ 18/45330/4462/160
㉓ 18/45330/4462/160
㉔ 18/45330/4462/160
㉕ 18/45330/4462/160
㉖ 18/45330/4462/160
㉗ 18/45330/4462/160
㉘ 18/45330/4462/160
㉙ 18/45330/4462/160
㉚ 18/45330/4462/160
㉛ 18/45330/4462/160
㉜ 18/45330/4462/160
㉝ 18/45330/4462/160
㉞ 18/45330/4462/160
㉟ 18/45330/4462/160
① 18/45330/4462/160
② 18/45330/4462/160
③ 18/45330/4462/160
④ 18/45330/4462/160
⑤ 18/45330/4462/160
⑥ 18/45330/4462/160
⑦ 18/45330/4462/160
⑧ 18/45330/4462/160
⑨ 18/45330/4462/160
⑩ 18/45330/4462/160
⑪ 18/45330/4462/160
⑫ 18/45330/4462/160
⑬ 18/45330/4462/160
⑭ 18/45330/4462/160
⑮ 18/45330/4462/160
⑯ 18/45330/4462/160
⑰ 18/45330/4462/160
⑱ 18/45330/4462/160
⑲ 18/45330/4462/160
⑳ 18/45330/4462/160
㉑ 18/45330/4462/160
㉒ 18/45330/4462/160
㉓ 18/45330/4462/160
㉔ 18/45330/4462/160
㉕ 18/45330/4462/160
㉖ 18/45330/4462/160
㉗ 18/45330/4462/160
㉘ 18/45330/4462/160
㉙ 18/45330/4462/160
㉚ 18/45330/4462/160
㉛ 18/45330/4462/160
㉜ 18/45330/4462/160
㉝ 18/45330/4462/160
㉞ 18/45330/4462/160
㉟ 18/45330/4462/160
① 18/45330/4462/160
② 18/45330/4462/160
③ 18/45330/4462/160
④ 18/45330/4462/160
⑤ 18/45330/4462/160
⑥ 18/45330/4462/160
⑦ 18/45330/4462/160
⑧ 18/45330/4462/160
⑨ 18/45330/4462/160
⑩ 18/45330/4462/160
⑪ 18/45330/4462/160
⑫ 18/45330/4462/160
⑬ 18/45330/4462/160
⑭ 18/45330/4462/160
⑮ 18/45330/4462/160
⑯ 18/45330/4462/160
⑰ 18/45330/4462/160
⑱ 18/45330/4462/160
⑲ 18/45330/4462/160
⑳ 18/45330/4462/160
㉑ 18/45330/4462/160
㉒ 18/45330/4462/160
㉓ 18/45330/4462/160
㉔ 18/45330/4462/160
㉕ 18/45330/4462/160
㉖ 18/45330/4462/160
㉗ 18/45330/4462/160
㉘ 18/45330/4462/160
㉙ 18/45330/4462/160
㉚ 18/45330/4462/160
㉛ 18/45330/4462/160
㉜ 18/45330/4462/160
㉝ 18/45330/4462/160
㉞ 18/45330/4462/160
㉟ 18/45330/4462/160
① 18/45330/4462/160
② 18/45330/4462/160
③ 18/45330/4462/160
④ 18/45330/4462/160
⑤ 18/45330/4462/160
⑥ 18/45330/4462/160
⑦ 18/45330/4462/160
⑧ 18/45330/4462/160
⑨ 18/45330/4462/160
⑩ 18/45330/4462/160
⑪ 18/45330/4462/160
⑫ 18/45330/4462/160
⑬ 18/45330/4462/160
⑭ 18/45330/4462/160
⑮ 18/45330/4462/160
⑯ 18/45330/4462/160
⑰ 18/45330/4462/160
⑱ 18/45330/4462/160
⑲ 18/45330/4462/160
⑳ 18/45330/4462/160
㉑ 18/45330/4462/160
㉒ 18/45330/4462/160
㉓ 18/45330/4462/160
㉔ 18/45330/4462/160
㉕ 18/45330/4462/160
㉖ 18/45330/4462/160
㉗ 18/45330/4462/160
㉘ 18/45330/4462/160
㉙ 18/45330/4462/160
㉚ 18/45330/4462/160
㉛ 18/45330/4462/160
㉜ 18/45330/4462/160
㉝ 18/45330/4462/160
㉞ 18/45330/4462/160
㉟ 18/45330/4462/160
① 18/45330/4462/160
② 18/45330/4462/160
③ 18/45330/4462/160
④ 18/45330/4462/160
⑤ 18/45330/4462/160
⑥ 18/45330/4462/160
⑦ 18/45330/4462/160
⑧ 18/45330/4462/160
⑨ 18/45330/4462/160
⑩ 18/45330/4462/160
⑪ 18/45330/4462/160
⑫ 18/45330/4462/160
⑬ 18/45330/4462/160
⑭ 18/45330/4462/160
⑮ 18/45330/4462/160
⑯ 18/45330/4462/160
⑰ 18/45330/4462/160
⑱ 18/45330/4462/160
⑲ 18/45330/4462/160
⑳ 18/45330/4462/160
㉑ 18/45330/4462/160
㉒ 18/45330/4462/160
㉓ 18/45330/4462/160
㉔ 18/45330/4462/160
㉕ 18/45330/4462/160
㉖ 18/45330/4462/160
㉗ 18/45330/4462/160
㉘ 18/45330/4462/160
㉙ 18/45330/4462/160
㉚ 18/45330/4462/160
㉛ 18/45330/4462/160
㉜ 18/45330/4462/160
㉝ 18/45330/4462/160
㉞ 18/45330/4462/160
㉟ 18/45330/4462/160
① 18/45330/4462/160
② 18/45330/4462/160
③ 18/45330/4462/160
④ 18/45330/4462/160
⑤ 18/45330/4462/160
⑥ 18/45330/4462/160
⑦ 18/45330/4462/160
⑧ 18/45330/4462/160
⑨ 18/45330/4462/160
⑩ 18/45330/4462/160
⑪ 18/45330/4462/160
⑫ 18/45330/4462/160
⑬ 18/45330/4462/160
⑭ 18/45330/4462/160
⑮ 18/45330/4462/160
⑯ 18/45330/4462/160
⑰ 18/45330/4462/160
⑱ 18/45330/4462/160
⑲ 18/45330/4462/160
⑳ 18/45330/4462/160
㉑ 18/45330/4462/160
㉒ 18/45330/4462/160
㉓ 18/45330/4462/160
㉔ 18/45330/4462/160
㉕ 18/45330/4462/160
㉖ 18/45330/4462/160
㉗ 18/45330/4462/160
㉘ 18/45330/4462/160
㉙ 18/45330/4462/160
㉚ 18/45330/4462/160
㉛ 18/45330/4462/160
㉜ 18/45330/4462/160
㉝ 18/45330/4462/160
㉞ 18/45330/4462/160
㉟ 18/45330/4462/160
① 18/45330/4462/160
② 18/45330/4462/160
③ 18/45330/4462/160
④ 18/45330/4462/160
⑤ 18/45330/4462/160
⑥ 18/45330/4462/160
⑦ 18/45330/4462/160
⑧ 18/45330/4462/160
⑨ 18/45330/4462/160
⑩ 18/45330/4462/160
⑪ 18/45330/4462/160
⑫ 18/45330/4462/160
⑬ 18/45330/4462/160
⑭ 18/45330/4462/160
⑮ 18/45330/4462/160
⑯ 18/45330/4462/160
⑰ 18/45330/4462/160
⑱ 18/45330/4462/160
⑲ 18/45330/4462/160
⑳ 18/45330/4462/160
㉑ 18/45330/4462/160
㉒ 18/45330/4462/160
㉓ 18/45330/4462/160
㉔ 18/45330/4462/160
㉕ 18/45330/4462/160
㉖ 18/45330/4462/160
㉗ 18/45330/4462/160
㉘ 18/45330/4462/160
㉙ 18/45330/4462/160
㉚ 18/45330/4462/160
㉛ 18/45330/4462/160
㉜ 18/45330/4462/160
㉝ 18/45330/4462/160
㉞ 18/45330/4462/160
㉟ 18/45330/4462/160
① 18/45330/4462/160
② 18/45330/4462/160
③ 18/45330/4462/160
④ 18/45330/4462/160
⑤ 18/45330/4462/160
⑥ 18/45330/4462/160
⑦ 18/45330/4462/160
⑧ 18/45330/4462/160
⑨ 18/45330/4462/160
⑩ 18/45330/4462/160
⑪ 18/45330/4462/160
⑫ 18/45330/4462/160
⑬ 18/45330/4462/160
⑭ 18/45330/4462/160
⑮ 18/45330/4462/160
⑯ 18/45330/4462/160
⑰ 18/45330/4462/160
⑱ 18/45330/4462/160
⑲ 18/45330/4462/160
⑳ 18/45330/4462/160
㉑ 18/45330/4462/160
㉒ 18/45330/4462/160
㉓ 18/45330/4462/160
㉔ 18/45330/4462/160
㉕ 18/45330/4462/160
㉖ 18/45330/4462/160
㉗ 18/45330/4462/160
㉘ 18/45330/4462/160
㉙ 18/45330/4462/160
㉚ 18/45330/4462/160
㉛ 18/45330/4462/160
㉜ 18/45330/4462/160
㉝ 18/45330/4462/160
㉞ 18/45330/4462/160
㉟ 18/45330/4462/160
① 18/45330/4462/160
② 18/45330/4462/160
③ 18/45330/4462/160
④ 18/45330/4462/160
⑤ 18/45330/4462/160
⑥ 18/45330/4462/160
⑦ 18/45330/4462/160
⑧ 18/45330/4462/160
⑨ 18/45330/4462/160
⑩ 18/45330/4462/160
⑪ 18/45330/4462/160
⑫ 18/45330/4462/160
⑬ 18/45330/4462/160
⑭ 18/45330/4462/160
⑮ 18/45330/4462/160
⑯ 18/45330/4462/160
⑰ 18/45330/4462/160
⑱ 18/45330/4462/160
⑲ 18/45330/4462/160
⑳ 18/45330/4462/160
㉑ 18/45330/4462/160
㉒ 18/45330/4462/160
㉓ 18/45330/4462/160
㉔ 18/45330/4462/160
㉕ 18/45330/4462/160
㉖ 18/45330/4462/160
㉗ 18/45330/4462/160
㉘ 18/45330/4462/160
㉙ 18/45330/4462/160
㉚ 18/45330/4462/160
㉛ 18/45330/4462/160
㉜ 18/45330/4462/160
㉝ 18/45330/4462/160
㉞ 18/45330/4462/160
㉟ 18/45330/4462/160
① 18/45330/4462/160
② 18/45330/4462/160
③ 18/45330/4462/160
④ 18/45330/4462/160
⑤ 18/45330/4462/160
⑥ 18/45330/4462/160
⑦ 18/45330/4462/160
⑧ 18/45330/4462/160
⑨ 18/45330/4462/160
⑩ 18/45330/4462/160
⑪ 18/45330/4462/160
⑫ 18/45330/4462/160
⑬ 18/45330/4462/160
⑭ 18/45330/4462/160
⑮ 18/45330/4462/160
⑯ 18/45330/4462/160
⑰ 18/45330/4462/160
⑱ 18/45330/4462/160
⑲ 18/45330/4462/160
⑳ 18/45330/4462/160
㉑ 18/45330/4462/160
㉒ 18/45330/4462/160
㉓ 18/45330/4462/160
㉔ 18/45330/4462/160
㉕ 18/45330/4462/160
㉖ 18/45330/4462/160
㉗ 18/45330/4462/160
㉘ 18/45330/4462/160
㉙ 18/45330/4462/160
㉚ 18/45330/4462/160
㉛ 18/45330/4462/160
㉜ 18/45330/4462/160
㉝ 18/45330/4462/160
㉞ 18/45330/4462/160
㉟ 18/45330/4462/160
① 18/45330/4462/160
② 18/45330/4462/160
③ 18/45330/4462/160
④ 18/45330/4462/160
⑤ 18/45330/4462/160
⑥ 18/45330/4462/160
⑦ 18/45330/4462/160
⑧ 18/45330/4462/160
⑨ 18/45330/4462/160
⑩ 18/45330/4462/160
⑪ 18/45330/4462/160
⑫ 18/45330/4462/160
⑬ 18/45330/4462/160
⑭ 18/45330/4462/160
⑮ 18/45330/4462/160
⑯ 18/45330

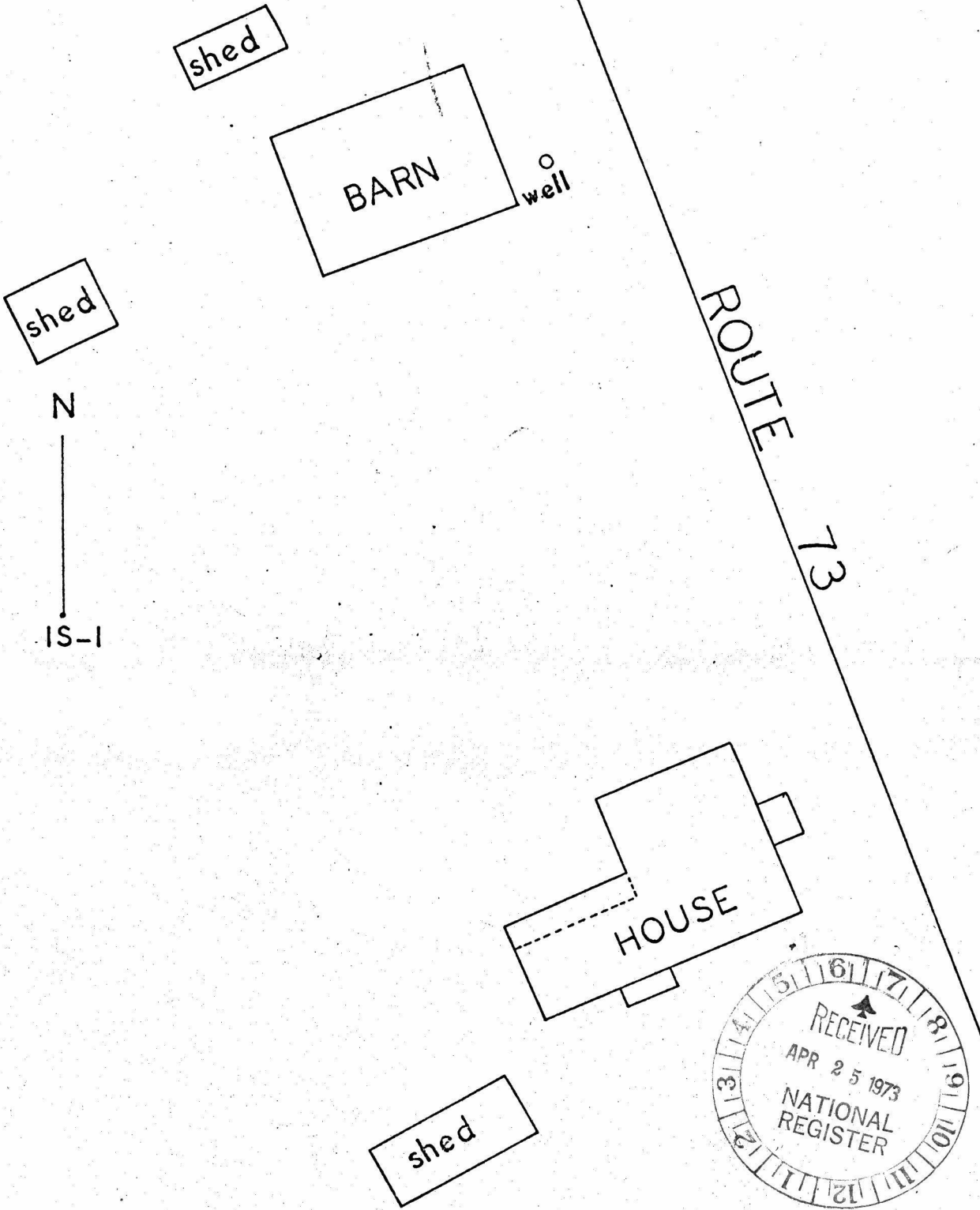
THE PLANK HOUSE

FLOOR PLAN



MEDL-1482

The Plank Barn
Site Map
Scale: $\frac{1}{10}'' = 3'$



73001652

PROPERTY Long Meadow Farm STATE Pa.

WORKING NUMBER 4.25.73.2871

Montgomery
8/3/73

TECH REVIEW
Photos 4
Maps 2

CONTROL REVIEW
OK
cm
5-14-
73

HISTORIAN
mainly architecturally sign.

Accept
AMM
5/14/73
Accept 5-15-73
Accept KH
5/14/73
Shub

ARCHITECTURAL HISTORIAN

ARCHEOLOGIST

REVIEW UNIT CHIEF

BRANCH CHIEF

OK
6/13/73
6/14

KEEPER
not a very convincing form

National Register write-up _____

Send-back _____

Federal Register entry 8-2-73

Re-submit _____

Entered **JUN 19 1973**



1- E. elevation of the Plank House

NPS Number 6-19-73

Title: Long Meadow Farm

Loc. Montgomery Co., Pa.
East elevation of the
Plank House

(2)

PROPERTY OF THE NATIONAL REGISTER



(ca. 1910)

#2- The Plank House, N. & W. elevations

NPS Number 6-19-73

Title: Long Meadow Farm

Loc. Montgomery Co., Pa.
North and west elevations
of the Plank House

3

PROPERTY OF THE NATIONAL REGISTER



Plank - PA-10

#3

original

Plank House - showing fluted
panels of ~~orig~~ second floor
window frames.

CAT. NO.	DATE
SUBJECT	
FILM	
STOP	EXPOSURE
LENS	FILTER
CAMERA	NEG. NO.
BEAUVEAU BORIE IV	

MPS Number

6-13-73

Title:

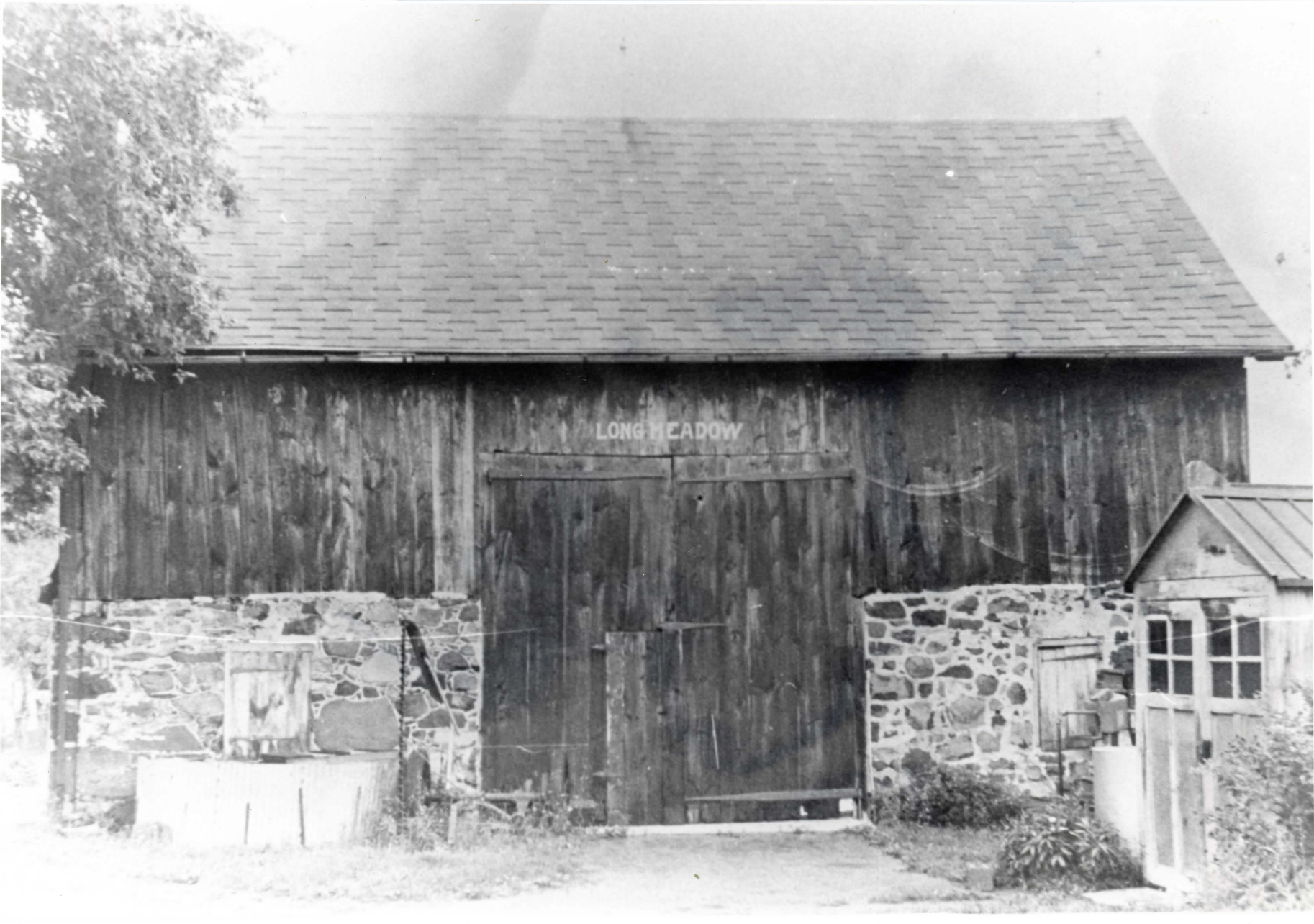
Long Meadow Farm

Loc.

Montgomery Co Pa
Original fluted panels
second floor window
frames

(2)

PROPERTY OF THE NATIONAL REGISTER



LONG MEADOW

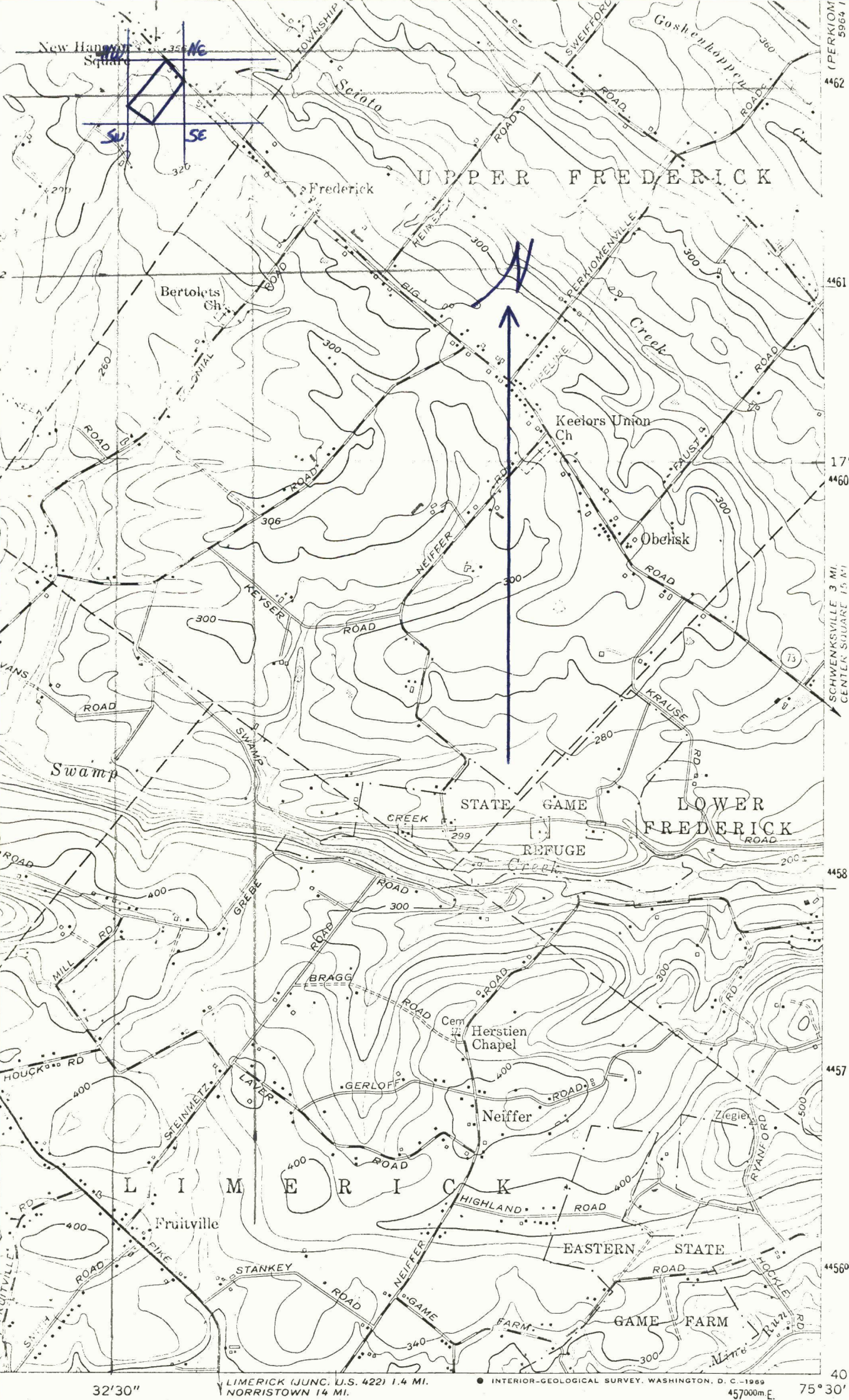
#4 - Bottom barn located on Plank property.

NPS Number 6-19-73

Title: Lanz Meadow Farm

Loc. Montgomery Co., Pa. ①
Bottom barn located
on the Plank property

PROPERTY OF THE NATIONAL REGISTER



Latitude:
 NW 40° 18' 36"
 NE 40° 18' 36"
 SE 40° 18' 26"
 SW 40° 18' 26"

Longitude:
 NW 75° 32' 29"
 NE 75° 32' 16"
 SE 75° 32' 16"
 SW 75° 32' 29"

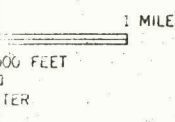
SCHWENKSVILLE 3 MI.
 CENTER SQUARE 1.5 MI.

32'30"

LIMERICK (JUNC. U.S. 422) 1.4 MI.
 NORRISTOWN 14 MI.

● INTERIOR-GEOLOGICAL SURVEY, WASHINGTON, D. C. - 1969
 457000m.E.

40° 15'
 75° 30'



Long Meadow Farm
 (or)
 Plank House and Barn

ROAD CLASSIFICATION

Heavy-duty ——— Light-duty ———
 Medium-duty ——— Unimproved dirt - - - - -

○ State Route

1" = 2000 ft.

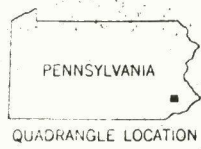
SASSAMANSVILLE, PA.

N4015—W7530/7.5

1957

PHOTOREVISED 1968

AMS 5864 I SE—SERIES V831



Form 10-301
(July 1969)

UNITED STATES DEPARTMENT OF THE INTERIOR
NATIONAL PARK SERVICE

NATIONAL REGISTER OF HISTORIC PLACES
PROPERTY MAP FORM

(Type all entries - attach to or enclose with map)

STATE	
PENNSYLVANIA	
COUNTY	
MONTGOMERY	
FOR NPS USE ONLY	
ENTRY NUMBER	DATE
JUN 18 1973	

1. NAME

COMMON: LONG MEADOW FARM
AND/OR HISTORIC: PLANK HOUSE AND BARN (CURRENT NAME)

2. LOCATION

STREET AND NUMBER:
ROUTE 73
CITY OR TOWN:
FREDERICK
STATE: PENNSYLVANIA CODE 42 COUNTY: MONTGOMERY CODE 091

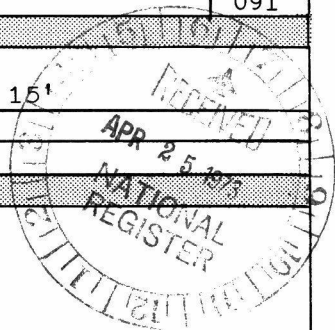
3. MAP REFERENCE

SOURCE:
U. S. C. AND G. SURVEY - SASSAMANSVILLE, PA. QUADRANGLE 151
SCALE: 1:24000
DATE: 1957 (PHOTOREVISED 1968)

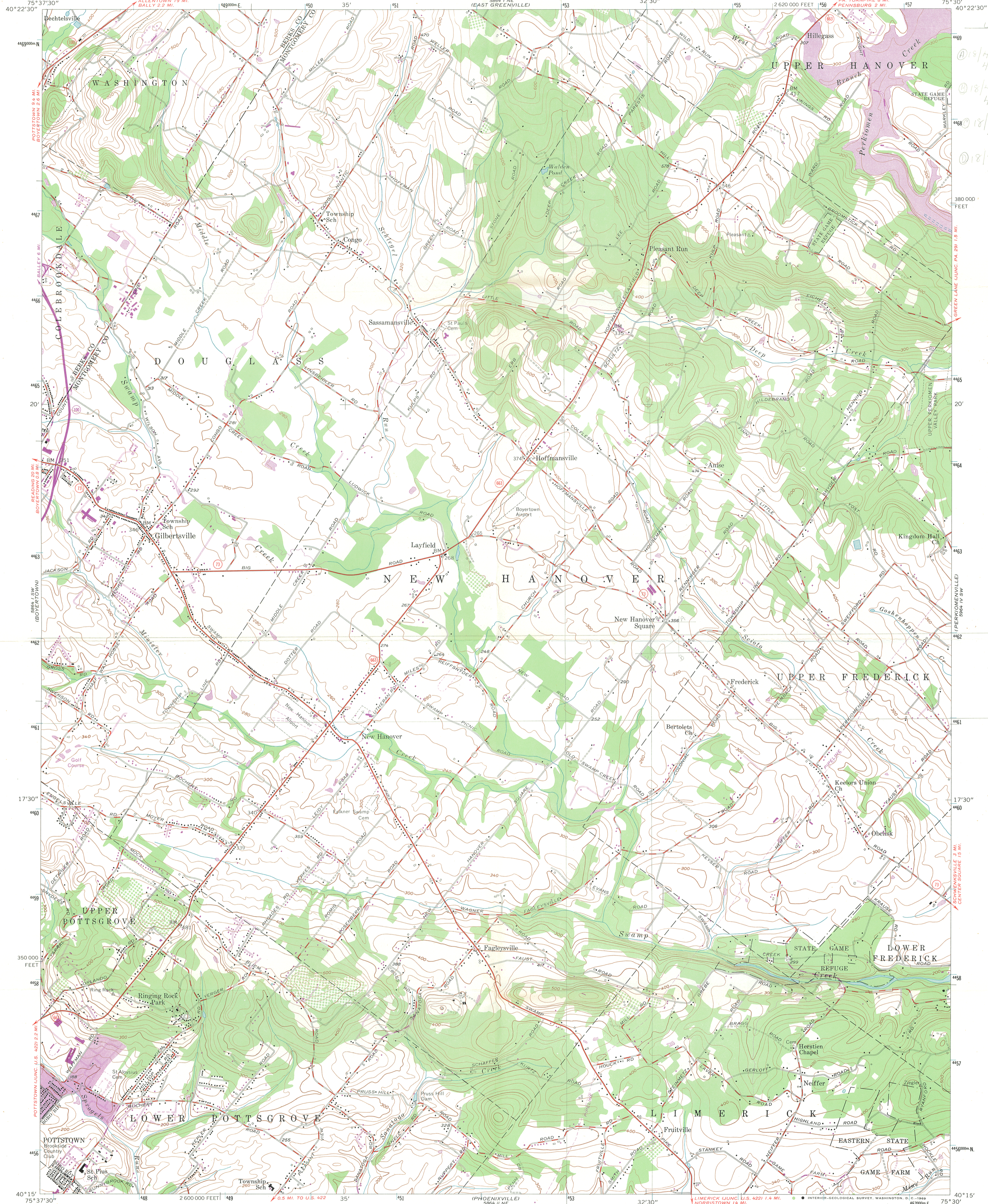
4. REQUIREMENTS

- TO BE INCLUDED ON ALL MAPS
1. Property boundaries where required.
 2. North arrow.
 3. Latitude and longitude reference.

PH0051454

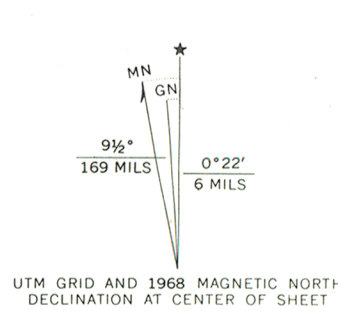


SEE INSTRUCTIONS

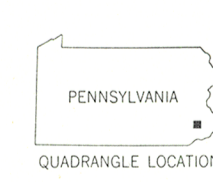


UTM REF
① 18/454330
4462160
② 18/454320
4461990
③ 18/453990
4461780
④ 18/454000
4462160

Mapped by the Army Map Service
Edited and published by the Geological Survey
Control by USGS and USC&GS
Topography from aerial photographs by photogrammetric methods
Aerial photographs taken 1942. Field check 1943
Culture revised by Geological Survey 1957
Polyconic projection 1927 North American datum
10,000-foot grid based on Pennsylvania coordinate system,
south zone
1000-meter Universal Transverse Mercator grid ticks,
zone 18, shown in blue
Revisions shown in purple compiled by Geological Survey in
cooperation with State of Pennsylvania Agencies, from aerial
photographs taken 1968. This information not field checked
Purple tint indicates urban areas



SCALE 1:24,000
CONTOUR INTERVAL 20 FEET
DATUM IS MEAN SEA LEVEL



ROAD CLASSIFICATION
Heavy-duty ——— Light-duty ———
Medium-duty ——— Unimproved dirt - - - - -
○ State Route

SASSAMANSVILLE, PA.
N4015—W7530/7.5
1957
PHOTOREVISED 1968
AMS 5864 1 SE—SERIES V831

THIS MAP COMPLIES WITH NATIONAL MAP ACCURACY STANDARDS
FOR SALE BY U.S. GEOLOGICAL SURVEY, WASHINGTON, D.C. 20242
A FOLDER DESCRIBING TOPOGRAPHIC MAPS AND SYMBOLS IS AVAILABLE ON REQUEST

COMMONWEALTH OF PENNSYLVANIA
PENNSYLVANIA HISTORICAL AND MUSEUM COMMISSION
WILLIAM PENN MEMORIAL MUSEUM AND ARCHIVES BUILDING
BOX 1026
HARRISBURG, PENNSYLVANIA 17120

August 1, 1975

Mr. Charles Harrington
National Register of Historic Places
National Park Service
Department of the Interior
18th and C Streets, N.W.
Washington, D. C. 20240



Dear Mr. Harrington:

One of our staff members has found mistakes in our files in 3 National Register sites in Montgomery County, Pennsylvania. In all three cases the township locations as they are shown on the maps do not correspond with the locations indicated on the National Register forms. These three sites are: (1) The Bergy Bridge Historic District; form location - Lower Salford Township, correct location - Upper Salford Township; (2) The Conrad Grubb Homestead; form location - Lower Frederick Township, correct location - Upper Frederick Township; (3) The Long Meadow Farm; form location - Frederick Township, correct location - New Hanover Township. Please correct the National Register regarding these sites. Thank you for your attention in this matter.

Sincerely,

Ed Weintraub _{pjs}

Ed Weintraub, Director
Office of Historic Preservation

EW/pjs

Blue

ENTRIES IN THE NATIONAL REGISTER

STATE PENNSYLVANIA

Date Entered JUN 19 1973

<u>Name</u>	<u>Location</u>
Carnegie Free Library of Braddock	Braddock Allegheny County
Grubb (Conrad) Homestead	Lower Frederick Township Montgomery County
Searight's Pulling Mill	Ferryopolis Fayette County
Odd Fellow's Hall	Philadelphia Philadelphia County
Corson (Alan W.) Homestead	Whitemarsh Township Montgomery County
Long Meadow Farm	Frederick Montgomery County
Brinton's (Edward) House	Chadds Ford vicinity Chester County

Also Notified

Hon. Hugh Scott
 Hon. Richard S. Schasiker
 Hon. Joseph M. Gaydos
 Hon. Lawrence Coughlin
 Hon. John H. Dent
 Hon. William J. Green
 Hon. E. G. Shuster
 Director, Northeast Region

Mr. William J. Weaver, Executive Director
 Pennsylvania Historical & Museum
 Commission
 Box 1026
 Harrisburg, Pennsylvania 17108