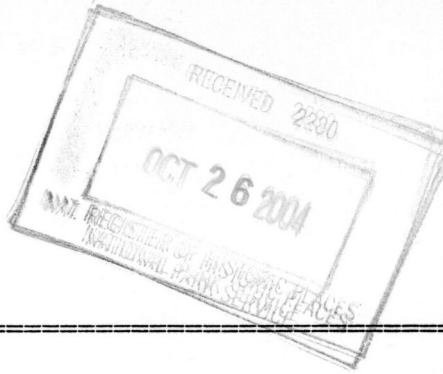


United States Department of the Interior
National Park Service

NATIONAL REGISTER OF HISTORIC PLACES
REGISTRATION FORM



1. Name of Property

historic name Antioch Dependent School District #15

other names/site number Antioch School; Johnnie Guthrie McWhirter Senior Center

2. Location

street & number 1/2 mile west of intersection of Antioch Road and State Highway 74 not for publication N/A

city or town Elmore City vicinity X

state Oklahoma code OK county Garvin code 049 zip code 73433

3. State/Federal Agency Certification

As the designated authority under the National Historic Preservation Act of 1966, as amended, I hereby certify that this nomination ___ request for determination of eligibility meets the documentation standards for registering properties in the National Register of Historic Places and meets the procedural and professional requirements set forth in 36 CFR Part 60. In my opinion, the property meets ___ does not meet the National Register Criteria. I recommend that this property be considered significant ___ nationally ___ statewide locally. (N/A See continuation sheet for additional comments.)

Bob LaBlanc
Signature of certifying official

10-25-04
Date

Oklahoma Historical Society, SHPO
State or Federal agency and bureau

In my opinion, the property ___ meets ___ does not meet the National Register criteria. (___ See continuation sheet for additional comments.)

Signature of commenting or other official Date

State or Federal agency and bureau

4. National Park Service Certification

I, hereby certify that this property is:
 entered in the National Register Edson H. Beall 12/6/04
___ See continuation sheet.
___ determined eligible for the _____
National Register
___ See continuation sheet.
___ determined not eligible for the _____
National Register
___ removed from the National Register _____
___ other (explain): _____

Jan
Signature of Keeper Date
 of Action

5. Classification

Ownership of Property (Check as many boxes as apply)

- private
- public-local
- public-State
- public-Federal

Category of Property (Check only one box)

- building(s)
- district
- site
- structure
- object

Number of Resources within Property

Contributing	Noncontributing
<u> 1 </u>	<u> 1 </u> buildings
<u> </u>	<u> </u> sites
<u> 1 </u>	<u> </u> structures
<u> 1 </u>	<u> </u> objects
<u> 3 </u>	<u> 1 </u> Total

Number of contributing resources previously listed in the National Register 0

Name of related multiple property listing (Enter "N/A" if property is not part of a multiple property listing.)
 N/A

6. Function or Use

Historic Functions (Enter categories from instructions)

Cat: EDUCATION Sub: School
SOCIAL Meeting Hall

Current Functions (Enter categories from instructions)

Cat: SOCIAL Sub: Meeting Hall

7. Description

Architectural Classification (Enter categories from instructions)

LATE 19TH & EARLY 20TH CENTURY REVIVALS: Colonial Revival

Materials (Enter categories from instructions)

foundation CONCRETE
roof ASPHALT SHINGLE
walls BRICK
WOOD: Weatherboard
other _____

Narrative Description (Describe the historic and current condition of the property on one or more continuation sheets.)

United States Department of the Interior
National Park Service

NATIONAL REGISTER OF HISTORIC PLACES
CONTINUATION SHEET

Section 7 Page 9

Antioch Dependent School District #15
name of property
Garvin County, Oklahoma
county and State

SUMMARY

The Antioch Dependent School District #15 is a brick two-room school built in 1928. It is situated on its original site on Antioch Road one half mile west of Antioch. The school is sited close to and perpendicular to the road. The two-room school building is constructed of red brick with poured concrete foundation. The gabled roof is covered with asphalt shingles. A break in the roofline, or drop wing, on the south part of the building marks the stage area inside. The west elevation boasts a large porch with four steel support columns. There are two original wooden doors which enter into the two classrooms. The doors have transoms. The school has double hung windows. The north end has an exit door and just outside a hand pump. Just to the east of the pump is a large concrete cellar with two entrances one on the west and one on the east. A metal building, housing bathrooms, a kitchen and a dining room large enough to accommodate approximately fifty people was constructed immediately north of the schoolhouse in 2003. This near the location of the original teacherage, since demolished.

SCHOOL BUILDING: EXTERIOR DESCRIPTION

The Antioch Dependent School District #15 is a two-room, brick building with a concrete foundation. The schoolhouse was built with load bearing brick walls, three bricks thick laid up in American bond. This method of construction with multi-brick layers has the added advantage of passive resistance to heat and cold. The building was constructed of solid brick from Ada, Oklahoma. The gabled roof is covered with asphalt shingles. The north and south gables have tongue and groove wood siding with large, rectangular, louvered, wooden air vents.

The facade of the building, the west elevation, contains the primary entrance and three paired six-over-six, double hung windows. (photo #1) The entry porch, roughly centered in the main body of the building, has a gabled roof and a concrete floor measuring 16'6" by 10'6". The roof is supported by four steel columns. The original gabled porch roof was extended on each side to cover exterior restrooms that were added in the 1950s. The restrooms, once flanking the entry doors, have been removed. Interior plaster from the restrooms is still visible on the exterior brick walls. The two wooden, five-panel doors with rectangular windows are original and enter into the two classrooms. The recently replaced windows were hand crafted with wooden sashes and are copies of the originals. The middle and north pair of windows open into the cloakrooms, while the south pair lights the recessed stage area. The east elevation has twelve nine-over-nine double hung windows (six in each class room) with a red brick chimney centered between the window sets. (photo #3) The original playground consisting of swings, merry-go-round and see-saws was on this side of the building. The south elevation has the off set gable roof over the stage area. There are no windows and only a louvered vent in the gable. The brick walls extend only to the eave line; the gables are clapboard with three inch reveals. A small vent opening is centered on the wall, just above the concrete foundation. This vents the crawl space. (photo #1 & 3) The north elevation has no windows, matching the south elevation, but has a single, offset door. The original, wooden door, offset on the east side of the elevation, was replaced with a larger, metal door to conform to

United States Department of the Interior
National Park Service

NATIONAL REGISTER OF HISTORIC PLACES
CONTINUATION SHEET

Section 7 Page 10

Antioch Dependent School District #15
name of property
Garvin County, Oklahoma
county and State

handicap codes. The north and south elevations have tongue and groove wood siding gables with large louvered wooden air vents.

INTERIOR DESCRIPTION

The school house has two classrooms; each has a cloakroom and a small closet. The north room measures 28' feet by 20'5", cloakroom 15'3" by 3'6"; the south room measures 27' 7" by 20'5", cloakroom is 15'7" by 3'5". Each closet measures 3'2" by 3'6". The stage, located off the south classroom, is 20'5" by 10".

The original floor is intact, however the south room is covered with linoleum. The interior walls are plastered and painted with wooden wainscoting. They were recently repaired and painted. Chalkboards cover most of the north and south walls above the wainscoting and are not the originals black ones of the 1930s but were installed prior to 1954. Electricity and electric lights were added to the building in the late 1940s. The wooden tongue and groove ceiling is original. The five interior doors are original; they consist of the door between the classrooms plus two cloakroom and two closet doors. The divider between the classrooms is a large retractable original chalkboard.

The south classroom is dominated by the stage. (photo #4) The stage floor is raised two-and-a-half above the classroom floor. The stage has original flooring. The entry from the exterior is located near the central dividing wall. The entry has simple, 4" surrounds, as do the cloakroom and closet doors. The beaded wainscot has a simple, squared cap.

The dividing wall consists of a retractable chalkboard that rises vertically into a pocket. (photo #5 & 6). Above the pocket is vertical beadboard, below is horizontal. An entry door is offset to the west.

The north classroom has exposed wood flooring, but is otherwise identical to the south classroom, *sans* stage.

ALTERATIONS

The Antioch Dependent School District # 15 has over the years undergone some alterations. However through the effort of the community, alumni, and interested individuals it has been restored to its original significance. Indoor toilets and plumbing were installed at an unknown date by closing in the front porch. The windows on the east were replaced aluminum windows and the wall was filled in to accommodate the smaller windows. Through volunteer community effort, these changes were reversed. When the toilets were removed from the front porch two slabs of concrete were left, they measures 6'6" by 6'6". The porch roof, which had been extended to cover the toilets, was retained, giving shade to this larger porch area. This is the primary deviation from the original appearance. On the interior, concessions to modern electrical codes have been made. New wiring and emergency lighting have been

United States Department of the Interior
National Park Service

NATIONAL REGISTER OF HISTORIC PLACES
CONTINUATION SHEET

Section 7 Page 11

Antioch Dependent School District #15
name of property
Garvin County, Oklahoma
county and State

added.

OTHER RESOURCES

For the most part, the grounds of the school are open, with a semi-circle driveway leading from the road to the west side of the building. Adjacent to the school, directly north, is a new, metal walled building. (photo #1 & 2) This building was constructed in 2003 to house bathroom and kitchen facilities. A covered porch shelters the area between the buildings, but is not attached to the school. This new building is a noncontributing resource. Also located between the two buildings is an original hand pump. This pump has a perforate pipe extending from it, creating a drinking fountain that could be utilized by a number of children. This pump is a contributing object. To the east of the school is a concrete storm shelter. (photo #7) This poured concrete shelter is rectangular and sits just above grade. Two entrances, on the east and west ends, are accessed by bulkhead doors. The shelter is a contributing structure.

8. Statement of Significance

Applicable National Register Criteria (Mark "x" in one or more boxes for the criteria qualifying the property for National Register listing)

- A Property is associated with events that have made a significant contribution to the broad patterns of our history.
- B Property is associated with the lives of persons significant in our past.
- C Property embodies the distinctive characteristics of a type, period, or method of construction or represents the work of a master, or possesses high artistic values, or represents a significant and distinguishable entity whose components lack individual distinction.
- D Property has yielded, or is likely to yield information important in prehistory or history.

Criteria Considerations (Mark "X" in all the boxes that apply.)

- A owned by a religious institution or used for religious purposes.
- B removed from its original location.
- C a birthplace or a grave.
- D a cemetery.
- E a reconstructed building, object, or structure.
- F a commemorative property.
- G less than 50 years of age or achieved significance within the past 50 years.

Areas of Significance (Enter categories from instructions)

EDUCATION
ARCHITECTURE

Period of Significance 1929-1954

8. Statement of Significance (Continued)

Significant Dates 1929

Significant Person (Complete if Criterion B is marked above)
N/A

Cultural Affiliation N/A

Architect/Builder _____

Narrative Statement of Significance (Explain the significance of the property on one or more continuation sheets.)

9. Major Bibliographical References

(Cite the books, articles, and other sources used in preparing this form on one or more continuation sheets.)

Previous documentation on file (NPS)

- preliminary determination of individual listing (36 CFR 67) has been requested.
- previously listed in the National Register
- previously determined eligible by the National Register
- designated a National Historic Landmark
- recorded by Historic American Buildings Survey # _____
- recorded by Historic American Engineering Record # _____

Primary Location of Additional Data

- State Historic Preservation Office
- Other State agency
- Federal agency
- Local government
- University
- Other

Name of repository: _____

10. Geographical Data

Acreage of Property 2 acres

UTM References (Place additional UTM references on a continuation sheet)

	Zone	Easting	Northing	Zone	Easting	Northing
1	14	645420	3843490	3	_____	_____
2	_____	_____	_____	4	_____	_____

N/A See continuation sheet.

Verbal Boundary Description (Describe the boundaries of the property on a continuation sheet.)

Boundary Justification (Explain why the boundaries were selected on a continuation sheet.)

11. Form Prepared By

name/title Laquetha Young & J.R. McCaskill / Historical Committee

organization Antioch Community Association date 9/4/2004

street & number 12412 kingsridge Terrace telephone (405) 378-3633

city or town Oklahoma City state OK zip code 73170

Additional Documentation

Submit the following items with the completed form:

Continuation Sheets

Maps

A USGS map (7.5 or 15 minute series) indicating the property's location.

A sketch map for historic districts and properties having large acreage or numerous resources.

Photographs

Representative black and white photographs of the property.

Additional items (Check with the SHPO or FPO for any additional items)

United States Department of the Interior
National Park Service

NATIONAL REGISTER OF HISTORIC PLACES
CONTINUATION SHEET

Section 8 Page 12

Antioch Dependent School District #15
name of property
Garvin County, Oklahoma
county and State

STATEMENT OF SIGNIFICANCE

The Antioch Dependent School District #15 located one half mile west of Antioch, which is midway between Maysville and Elmore City, Oklahoma, is eligible for the National Register of Historic Places under the Criterion A as an example of a two-room country school that served the educational needs of the community of Antioch from 1929 to 1962. The school also played an important role in the community's social history as a community gathering center for social, religious, recreation and culture functions. The period of significance for the Antioch Dependent School District 15 is 1929 to 1954. It begins with the year of construction of the school and extends to National Register fifty year benchmark. The school is also eligible for the National Register under the Criterion C as a rare surviving example of a government-designed, two-room school house. It is the last example of this type of school in Garvin County that retains its integrity.

HISTORICAL BACKGROUND

The Antioch community was established in the 1880s and has a long and colorful past. The residents were farmers who raised crops common to the area such as, cotton, corn, and broomcorn. At one time Antioch had a drugstore, two mercantile stores, blacksmith shop, a cotton gin, a school and a post office which was started in 1895. The post office was closed in 1932. Local lore indicates Antioch had a reputation of being a rough community, with gambling, bootleg whiskey, and gun fights. One incident is still remembered by residents as having taken place in the schoolhouse.

The original, white frame, two-room school built in 1908 was located a short ways north of the current site. It was typical of the rural schools built in the days of early statehood when a law was passed that required there be a school every 3 miles (within walking distance of all).

Construction of the new school was completed in 1929 on the 2 acre plot. It was annexed in 1962 to Elmore City and Maysville school districts with the ownership of the building and grounds going to the Elmore City School District. Elmore City allowed the community to use the building as a community center. The Antioch ABC Extension Club took on the responsibility to maintaining of the building. Over the years the Club made minor repairs and replaced the windows on the east with smaller one and made changes to the floor. However, in April of 2000, the building was deteriorating. A group of community residents, alumni and other concerned citizens met and discussed the condition of the building, made plans to form an organization and explore the possibility of acquiring control and restoring the site.

In January 2001 the Antioch Community Association, Inc. was formed. The Association was granted a 99 year lease and renovation began. In order to maintain the historical integrity of the building and serve the needs of the community, a building was added just north of the school house to provided bathrooms, a kitchen and dining area.

United States Department of the Interior
National Park Service

NATIONAL REGISTER OF HISTORIC PLACES
CONTINUATION SHEET

Section 8 Page 13

Antioch Dependent School District #15
name of property
Garvin County, Oklahoma
county and State

HISTORICAL SIGNIFICANCE

The Antioch Dependent School District #15 is significant to the educational history of Garvin County because of its contribution to the education of the community's children from 1908 to 1962. The period of significance for the school extends from 1929 to 1954. The period of significance ends in 1954 to conform to the National Register fifty year mark. The two-room country school emphasized the simultaneous education of area students in grades one through eight during that time. A dependent school district did not have high school accreditation and was required to remit funds to an independent district to allow the eighth grade graduates to attend high school. Many graduates from Antioch were satisfied with an eighth grade education while others lived with relatives in town (Elmore City or Maysville) to obtain a high school diploma. Without the rural two room schools, many children would not received any formal education.

Antioch Dependent School District #15 was one of the last remaining two-room country schools in Garvin County in 1962. Classes at Antioch ended in May of 1962. It was annexed to Elmore City and Maysville school districts with the ownership of the building and grounds going to the Elmore City School District. Elmore City allowed the community to use the building as a community center.

In addition to providing education, the Antioch schoolhouse served the community as a cultural and social center. School events such as 4-H meetings, Pie Suppers, Christmas programs and school plays provided the community with entertainment. Furthermore, a full range of community activities were held in the school, such as community bridal and baby showers, family reunions, funerals and funeral dinners, church meetings, adult theater groups, community socials, dances and political meetings. Members of the Antioch community were farm and ranch families that took an active role in local politics and community affairs.

ARCHITECTURAL SIGNIFICANCE

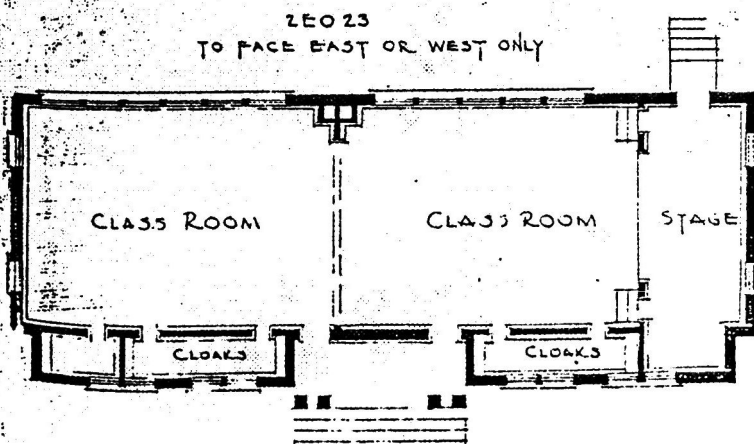
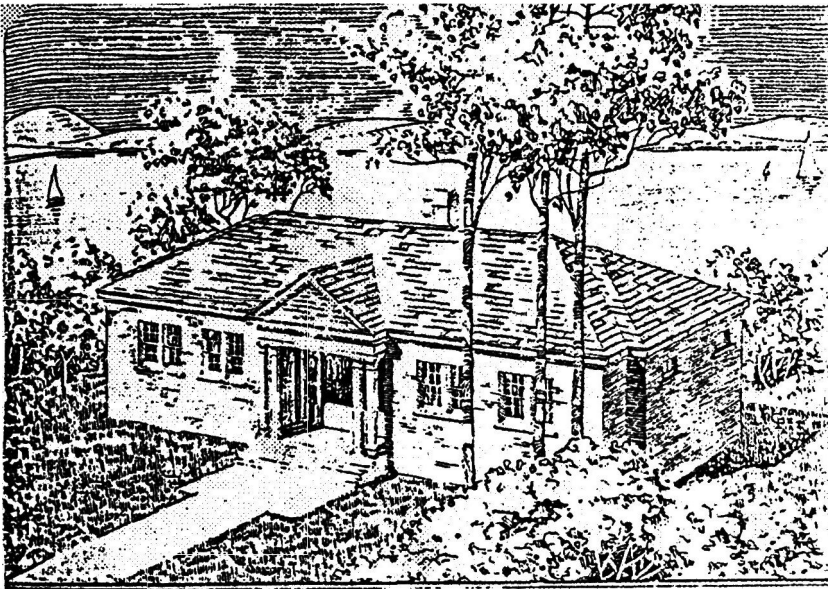
The Antioch schoolhouse was built according to plans probably supplied by the Oklahoma Department of Public Instruction. It closely matches plans for a two-room school that is to be oriented with the long axis facing east/west. Plan #2EO23 is depicted below. The plans come from a 1937 publication titled School Buildings, Miniature Plans and Perspectives published by the agency.

United States Department of the Interior
National Park Service

NATIONAL REGISTER OF HISTORIC PLACES
CONTINUATION SHEET

Section 8 Page 14

Antioch Dependent School District #15
name of property
Garvin County, Oklahoma
county and State



203

From School Buildings, Miniature Plans and Perspectives. Oklahoma City: Oklahoma Department of Public Instruction, Division of Schoolhouse Planning. 1937.

United States Department of the Interior
National Park Service

NATIONAL REGISTER OF HISTORIC PLACES
CONTINUATION SHEET

Section 8 Page 15

Antioch Dependent School District #15
name of property
Garvin County, Oklahoma
county and State

It is built of red brick; the walls are three bricks deep with a cavity in the middle serving as insulation from the cold and heat. No wood was used to frame the exterior walls which are all load bearing walls. Wood was used in the construction of the school building walls only to frame the windows and in the gables and roof.

Furthermore, the Antioch Dependent School District 15 is the only intact, brick, two-room school building in Garvin County. We have drawn this conclusion after consulting with area school districts, county commissioners, and by surveying school sites from a county map of rural schools in Garvin County. There are no schools remaining in the surrounding districts; Garvin Springs, Davis, Love, Cottonwood, Bell, Crawford and Parks have all been torn down or burned. There are few historic schools left in Garvin County; those that are left are the larger, consolidated schools located in or near larger towns.

The Antioch Dependent School District #15 represents the importance of smaller schools to the life and vitality of their respective communities, both as educational centers and centers of community life and pride. This government-designed, modest building has served as a focus for the small village of Antioch since its construction in 1929. It remains the best example of a rural, dependent school in the county. Retaining a high degree of integrity of location, setting, materials, workmanship, feeling and association and a good degree of original design, this resource is eligible for the National Register under Criteria A & C.

United States Department of the Interior
National Park Service

NATIONAL REGISTER OF HISTORIC PLACES
CONTINUATION SHEET

Section 9, 10 Page 16

Antioch Dependent School District #15
name of property
Garvin County, Oklahoma
county and State

BIBLIOGRAPHY

Bullard, Bun and Dollie. Early residents of area, Garvin County Oklahoma. County of the OKGenWeb/USGenWeb Project <http://www.rootsweb.com/~okgarvin/antioch.html> August 2004

Cagle, Kenneth Student Antioch School 1920 and 30's . Oral interview with Laquetha Young. Summer 2004

Garvin County History First Edition 1957 Sponsored by the Pauls Valley Chamber of Commerce, University Supply and Equipment Company Publishers, Fort Worth, Texas

Guthrie, Minnie Jane, Teacher Antioch School 1928-29 Oral interview with Laquetha Young Summer 1997

McCaskill, Beulah Collins, Student Antioch School 1920's Oral interview with Jimmy Ray McCaskill Summer 2004

Washita Valley, Volume 2 Spring 1981. Valley Hi Times students at Pauls Valley High School Pauls Valley, Oklahoma

VERBAL BOUNDARY DESCRIPTION

Located in Section 16, Township 3 North, Range 2 West. Beginning at a point 351 feet East of the SW corner of the SW quarter of the SE quarter, thence 313 feet North, thence 316'6" East, thence 313' South, thence 316'6" West to the point of beginning, consisting of 2 acres, more or less.

BOUNDARY JUSTIFICATION

This consists of the entirety of the property historically associated with Antioch Dependent School District #15.

Property Owner

(Complete this item at the request of the SHPO or FPO.)

name Antioch Community Association, C/O Glenna Searcy

street & number Rt. 1 Box 151 telephone (405) 788-4457

city or town Elmore City state OK zip code 73433

UNITED STATES DEPARTMENT OF THE INTERIOR
NATIONAL PARK SERVICE

NATIONAL REGISTER OF HISTORIC PLACES
EVALUATION/RETURN SHEET

REQUESTED ACTION: NOMINATION

PROPERTY NAME: Antioch Dependent School District #15

MULTIPLE NAME:

STATE & COUNTY: OKLAHOMA, Garvin

DATE RECEIVED: 10/26/04 DATE OF PENDING LIST: 11/19/04
DATE OF 16TH DAY: 12/04/04 DATE OF 45TH DAY: 12/09/04
DATE OF WEEKLY LIST:

REFERENCE NUMBER: 04001333

REASONS FOR REVIEW:

APPEAL: N DATA PROBLEM: N LANDSCAPE: N LESS THAN 50 YEARS: N
OTHER: N PDIL: N PERIOD: N PROGRAM UNAPPROVED: N
REQUEST: N SAMPLE: N SLR DRAFT: N NATIONAL: N

COMMENT WAIVER: N

ACCEPT RETURN REJECT 12/6/04 DATE

ABSTRACT/SUMMARY COMMENTS:

*Entered in the
National Register*

RECOM./CRITERIA _____

REVIEWER _____ DISCIPLINE _____

TELEPHONE _____ DATE _____

DOCUMENTATION see attached comments Y/N see attached SLR Y/N

If a nomination is returned to the nominating authority, the nomination is no longer under consideration by the NPS.



Antioch Dependent School District #15

Garvin County, Oklahoma

Jim Gabbert

Sept 9, 2004

SHPO

Facing NE Front + Side

1 of 7



Antioch Dependent School District # 15

Garvin County, Oklahoma

Jim Gabbert

Sept 9, 2004

SHPO

Facing SE - New metal bldg & School

2 of 7



Antioch Dependent School District # 15

Garvin County, Ok

Jim Gabbert

Sept 9, 2004

SHPO

Facing NW - Rear + Side elevation

3 of 7



Antioch Dependent School District #15

Garvin County, Ok

Jim Gabbert
Sept 9, 2004
SHPO

Facing South - South Classroom showing stage

4 of 7



Antioch Dependent School District #15

Garvin County, OK

Jim Gabberd

Sept 9, 2004

SHPO

Facing ~~North~~ From Stage - S. Classroom + Partition

5 of 7



Antioch Dependent School District #15

Garvin County, OK

Jim Gabbert

Sept 9, 2004

SHP 0

Facing Southwest, North Classroom showing Partition, closets, + Door

6 of 7



Antioch Dependent School District #15

Garvin County, Ok

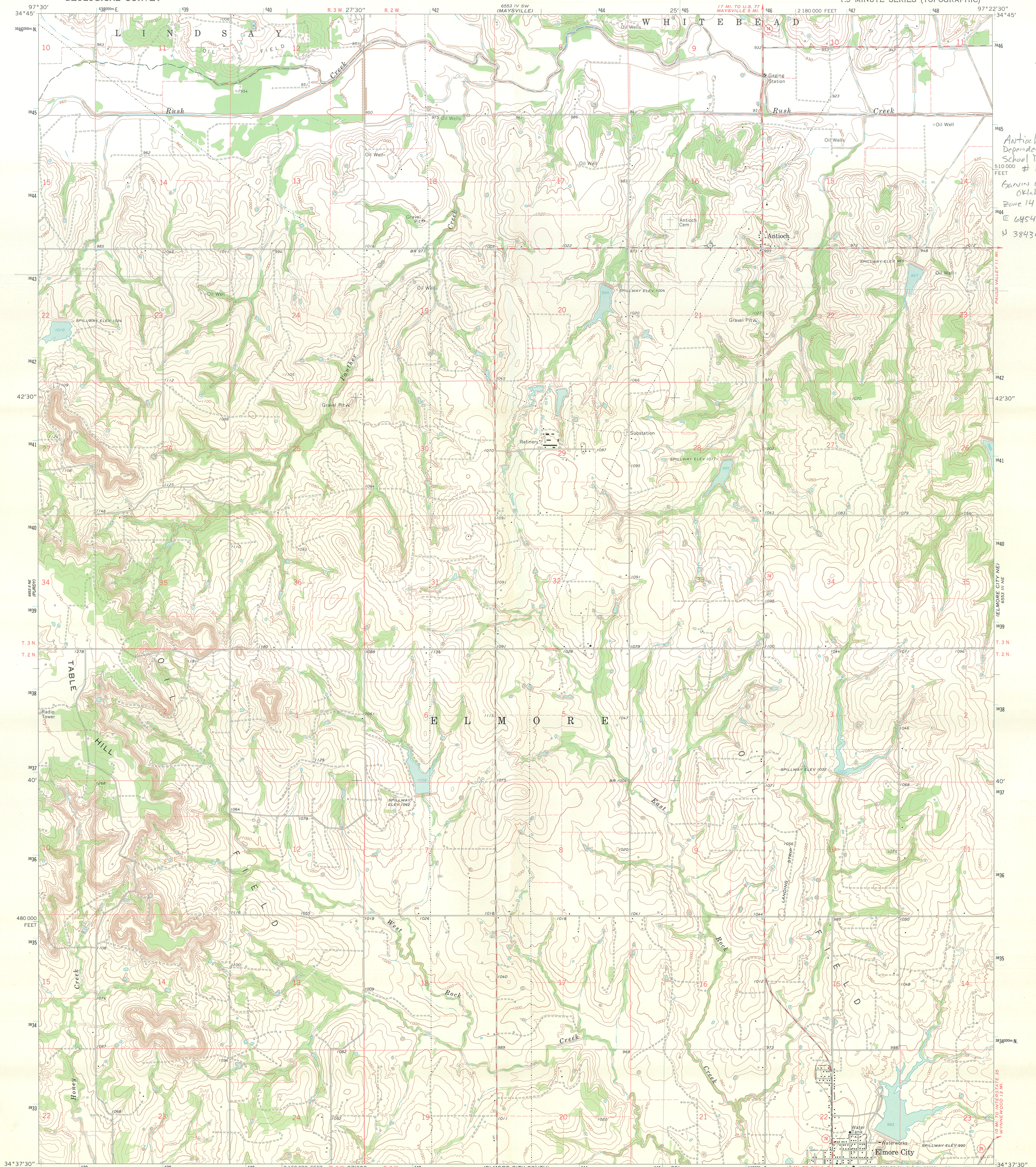
Jim Gabbert

Sept 9, 2004

SHPO

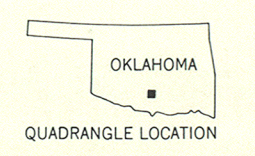
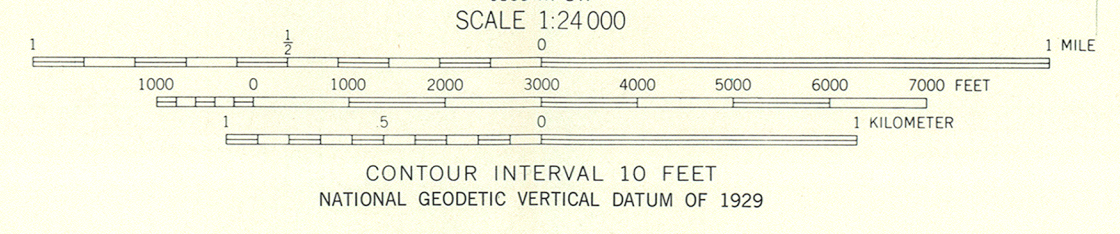
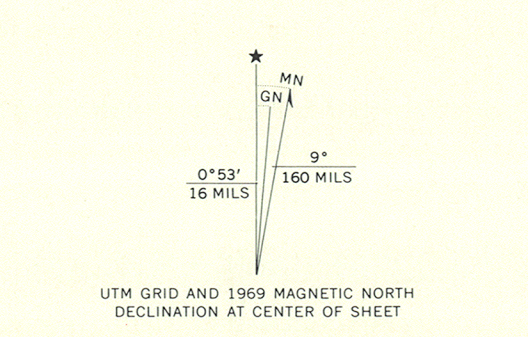
Facing ~~East-northeast~~ - showing storm shelter

7 of 7



Antioch
Dependent
School District
15
510 000
FEET
Garvin County
Oklahoma
Zone 14
E 645420
N 3843490

Mapped, edited, and published by the Geological Survey
Control by USGS and USC&GS
Topography by photogrammetric methods from aerial
photographs taken 1967. Field checked 1969
Polyconic projection. 1927 North American datum
10,000-foot grid based on Oklahoma coordinate system, south zone
1000-meter Universal Transverse Mercator grid ticks,
zone 14, shown in blue
To place on the predicted North American Datum 1983
move the projection lines 5 meters south and
28 meters east as shown by dashed corner ticks
Fine red dashed lines indicate selected fence and field lines where
generally visible on aerial photographs. This information is unchecked
Map photoinspected 1978
No major culture or drainage changes observed



ROAD CLASSIFICATION
Secondary highway, all weather, Light-duty road, all weather,
hard surface Improved surface
Unimproved road, fair or dry
weather
State Route

THIS MAP COMPLIES WITH NATIONAL MAP ACCURACY STANDARDS
FOR SALE BY U. S. GEOLOGICAL SURVEY, DENVER, COLORADO 80225, OR RESTON, VIRGINIA 22092
AND BY THE OKLAHOMA GEOLOGICAL SURVEY, NORMAN, OKLAHOMA 73069
A FOLDER DESCRIBING TOPOGRAPHIC MAPS AND SYMBOLS IS AVAILABLE ON REQUEST

ELMORE CITY NORTH, OKLA.
N3437.5-W9722.5/7.5
1969
PHOTOINSPECTED 1978
AMS 6553 III NW -SERIES V883