

United States Department of the Interior
National Park Service

National Register of Historic Places
Registration Form

580
RECEIVED 413

OMB No. 10024-0018

APR 10 1995

INTERAGENCY RESOURCES DIVISION

NATIONAL PARK SERVICE

This form is for use in nominating or requesting determinations for individual properties and districts. See instructions in how to complete the National Register of Historic Places Registration Form (National Register Bulletin 16A). Complete each item by marking "x" in the appropriate box or by entering the information requested. If an item does not apply to the property being documented, enter "N/A" for "not applicable." For functions, architectural classification, materials, and areas of significance, enter only categories and subcategories from the instructions. Place additional entries and narrative items on continuation sheets (NPS Form 10-900a). Use a typewriter, word processor, or computer, to complete all items.

1. Name of Property

historic name Engine House #16

other names/site number Central Ohio Fire Museum

2. Location

street & number 260 North Fourth Street N/A not for publication

city or town Columbus N/A vicinity

state Ohio code OH county Franklin code 049 zip code 43215

3. State/Federal Agency Certification

As the designated authority under the National Historic Preservation Act, as amended, I hereby certify that this ☒ nomination ☐ request for determination of eligibility meets the documentation standards for registering properties in the National Register of Historic Places and meets the procedural and professional requirements set forth in 36 CFR Part 60. In my opinion, the property ☒ meets ☐ does not meet the National Register criteria. I recommend that this property be considered significant ☐ nationally ☐ statewide ☒ locally. (☐ See continuation sheet for additional comments.)

Barbara Power *Dept. Head Planning, Inventory* *3-17-95*
Signature of certifying official/Title Date
Ohio Historic Preservation Office -- OHSHPO
State of Federal agency and bureau

In my opinion, the property ☐ meets ☐ does not meet the National Register criteria. (☐ See continuation sheet for additional comments.)

Signature of certifying official/Title Date
State or Federal agency and bureau

4. National Park Service Certification

I hereby certify that the property is:

- ☒ entered in the National Register.
☐ See continuation sheet.
☐ determined eligible for the National Register
☐ See continuation sheet.
☐ determined not eligible for the National Register.
☐ removed from the National Register.
☐ other, (explain:)

Signature of the Keeper

Edson H. Beall

Entered in the Date of Action
National Register 5.11.95

Name of Property

5. Classification**Ownership of Property**

(Check as many boxes as apply)

- ☐ private
☒ public-local
☐ public-State
☐ public-Federal

Category of Property

(Check only one box)

- ☒ building(s)
☐ district
☐ site
☐ structure
☐ object

Number of Resources within Property

(Do not include previously listed resources in the count.)

Contributing

2

Noncontributing

0

buildings

0

0

sites

0

0

structures

0

0

objects

2

0

Total

Name of related multiple property listing

(Enter "N/A" if property is not part of a multiple property listing.)

N/A

**Number of contributing resources previously listed
in the National Register**

none

6. Function or Use**Historic Functions**

(Enter categories from instructions)

Government fire station

Current Functions

(Enter categories from instructions)

Recreation & Culture Museum

7. Description**Architectural Classification**

(Enter categories from instructions)

Late 19th and Early 20th Century Revivals

Materials

(Enter categories from instructions)

foundation stone

walls brick

roof asphalt

other contrasting stone ornamentation

Narrative Description

(Describe the historic and current condition of the property on one or more continuation sheets.)

8. Statement of Significance

Applicable National Register Criteria

(Mark "x" in one or more boxes for the criteria qualifying the property for National Register listing.)

- ☐ A Property is associated with events that have made a significant contribution to the broad patterns of our history.
- ☐ B Property is associated with the lives of persons significant in our past.
- ☒ C Property embodies the distinctive characteristics of a type, period, or method of construction or represents the work of a master, or possesses high artistic values, or represents a significant and distinguishable entity whose components lack individual distinction.
- ☐ D Property has yielded, or is likely to yield, information important in prehistory or history.

Criteria Considerations

(Mark "x" in all the boxes that apply.)

Property is:

- ☐ A owned by a religious institution or used for religious purposes.
- ☐ B removed from its original location.
- ☐ C a birthplace or grave.
- ☐ D a cemetery.
- ☐ E a reconstructed building, object, or structure.
- ☐ F a commemorative property.
- ☐ G less than 50 years of age or achieved significance within the past 50 years.

Areas of Significance

(Enter categories from instructions)

architecture

Period of Significance

1908

Significant Dates

1908

Significant Person

(Complete if Criterion B is marked above)

Cultural Affiliation

N/A

Architect/Builder

Narrative Statement of Significance

(Explain the significance of the property on one or more continuation sheets.)

9. Major Bibliographical References

Bibliography

(Cite the books, articles, and other sources used in preparing this form on one or more continuation sheets.)

Previous documentation on file (NPS):

N/A

- ☐ preliminary determination of individual listing (36 CFR 67) has been requested
- ☐ previously listed in the National Register
- ☐ previously determined eligible by the National Register
- ☐ designated a National Historic Landmark
- ☐ recorded by Historic American Buildings Survey # _____
- ☐ recorded by Historic American Engineering Record # _____

Primary location of additional data:

- ☒ State Historic Preservation Office
- ☐ Other State agency
- ☐ Federal agency
- ☐ Local government
- ☐ University
- ☐ Other

Name of repository: _____

Engine House #16
Name of Property

Franklin County, Ohio
County and State

10. Geographical Data

Acreage of Property less than one

UTM References

(Place additional UTM references on a continuation sheet.)

1	1	7	3	2	9	4	6	0	4	4	2	5	9	3	0
Zone			Easting						Northing						
2															

3															
Zone			Easting						Northing						
4															

☐ See continuation sheet

Verbal Boundary Description

(Describe the boundaries of the property on a continuation sheet.)

Boundary Justification

(Explain why the boundaries were selected on a continuation sheet.)

11. Form Prepared By

name/title Nancy Recchie/Historic Preservation Consultant
organization Benjamin D. Rickey & Co. date 9/94
street & number 593 South Fifth Street telephone 614-221-0358
city or town Columbus state Ohio zip code 43206

Additional Documentation

Submit the following items with the completed form:

Continuation Sheets

Maps

A **USGS map** (7.5 or 15 minute series) indicating the property's location.

A **Sketch map** for historic districts and properties having large acreage or numerous resources.

Photographs

Representative **black and white photographs** of the property.

Additional items

(Check with the SHPO or FPO for any additional items)

Property Owner

(Complete this item at the request of SHPO or FPO.)

name City of Columbus leased to Central Ohio Fire Museum
street & number 240 North Fourth Street telephone 614-464-4099
city or town Columbus state Ohio zip code 43215

Paperwork Reduction Act Statement: This information is being collected for applications to the National Register of Historic Places to nominate properties for listing or determine eligibility for listing, to list properties, and to amend existing listings. Response to this request is required to obtain a benefit in accordance with the National Historic Preservation Act, as amended (16 U.S.C. 470 *et seq.*).

Estimated Burden Statement: Public reporting burden for this form is estimated to average 18.1 hours per response including time for reviewing instructions, gathering and maintaining data, and completing and reviewing the form. Direct comments regarding this burden estimate or any aspect of this form to the Chief, Administrative Services Division, National Park Service, P.O. Box 37127, Washington, DC 20013-7127; and the Office of Management and Budget, Paperwork Reductions Projects (1024-0018), Washington, DC 20503.

United States Department of the Interior
National Park ServiceNational Register of Historic Places
Continuation SheetSection number 7 Page 1

Engine House #16
Central Ohio Fire Museum
Columbus, Ohio

Description

Engine House #16, located at 260 North Fourth Street in downtown Columbus, is a three story, handsomely detailed, brown-red and buff-colored brick fire house constructed in 1908. It was the last firehouse in Columbus built to accommodate horse-drawn engines. Although not fitting a particular stylistic category, the building is heavily influenced by the Italianate style with corbelled brickwork, and a square tower with arcaded round-arched windows. The building measures seven by thirteen bays and has a flat, built-up roofline hidden by the stepped parapet on the north, south and west elevations. It contain three engine bays, a stable at the rear, and a four story tower on the south side. Also located on the property, behind the Engine House, is a two story brick building with a gabled roofline. Engine House #16 has been recently restored and is used as the Central Ohio Fire Museum.

The south (main) elevation is finely detailed and features three pairs of wooden hinged doors, one pair leading to each of the three engine bays; simple 1/1 double hung windows; and a distinctive parapet design consisting of constructed of contrasting buff-colored brick. The parapet features arcaded corbelled brickwork, and a shaped parapet with metal coping and finials.

The south elevation features an entrance with transom in the westernmost bay, and a pair of wooden hinged doors leading to the area that originally served as the stable. The buff-colored parapet is only on the front portion of the building (west of the tower) and echoes the shape of that on the facade but is much simpler in design and lacks the arcaded corbelled brickwork. The most distinctive feature on the building -- the square hose tower -- is located on this elevation. It is set back from the facade and features simple 1/1 double hung windows on three floors; four circular windows, outlined with contrasting buff-colored brick; and an open tower with arcaded corbelled brickwork; paired round-arched openings divided by a stone column; a pyramidal slate roof; and small corner turrets with finials on each of the four corners. The tower is approximately 80 feet in height and is clearly visible from several blocks away.

United States Department of the Interior
National Park Service

RECEIVED JAN 11 1995

National Register of Historic Places Continuation Sheet

Section number 7 Page 2

Engine House #16
Central Ohio Fire Museum
Columbus, Ohio

Description (continued)

The rear elevation is two stories in height and features all segmental-arched openings including the two entrances with transoms and the 1/1 double-hung windows. The north elevation is only a few feet from another building and has only a few windows openings.

The interior of the building retains much of its original design including the pressed tin ceiling in the apparatus area of the first floor; 11 original horse stall doors that led to the stable area at the rear of the building; a central wooden staircase; and the open volume of space across the front of the building on the second floor. Skylights which permitted natural light into the interior spaces of the second floor are also intact. The interior arrangement of spaces is largely intact with the dormitory, restrooms, offices and locker rooms on the second floor front and a hayloft above the stable in the rear.

The building at the rear of the property was constructed shortly after the construction of the firehouse and was originally used as a maintenance facility for the fire department. It is now used to store equipment and artifacts for the fire museum. It is strictly utilitarian in design with segmental arched openings and a gabled parapet on the north and south sides. The windows have been boarded up although the window sash remain. A contemporary garage door was added in the southernmost bay of the eastern elevation.

Engine House #16 was remodeled over the years to allow for larger mechanized equipment. When the new Engine House #1 was constructed two blocks away in 1982, this engine house was closed. The following year, a non-profit organization was formed to establish a fire museum. The City of Columbus leased this building to the Central Ohio Fire Museum, which has undertaken improvements to the building since that time. An exterior restoration project was undertaken in 1990. It included the complete restoration of the facade (which had the third story windows and decorative parapet removed), installation of new doors based on the original design, and the reconstruction of the tower above the corbelled brickwork. The accurate restoration work was based on historic photographs and involved custom-sized and -colored bricks to match the two-colored original design.

United States Department of the Interior
National Park ServiceNational Register of Historic Places
Continuation Sheet

RECEIVED JAN 11 1995

Section number 7,8 Page 3Engine House #16
Central Ohio Fire Museum
Columbus, Ohio

Description (continued)

This building retains remarkable integrity of design, materials, workmanship, location, setting and association. The engine house retains its most significant original design features including the use of polychrome brick materials and decorative treatment; the finely crafted hose tower; interior pressed tin ceiling and staircase; and the large volumes of interior spaces. The building exists in its original location at the termination of Chestnut Street in the northwest area of downtown Columbus. It is surrounded by low-rise (2-3 story) structures and surface parking lots, which make this building highly-visible and its tower a true visual landmark.

Statement of Significance

Engine House #16, the Central Ohio Fire Museum, is eligible for the National Register under **Criterion C** as an excellent, very well-preserved example of a turn of the century firehouse in Columbus, Ohio. It was constructed during a period when a large number of firehouses were being constructed by the Columbus Fire Department. In recent years, nearly every one of the historic firehouses has been replaced by contemporary, single story structures. As the older firehouses cease operation, many have been demolished. This building accurately conveys the scale, form, civic design and attention to detail that was typical of firehouses during the late 19th and early 20th century period.

Columbus became a city on March 3, 1834 with a population of approximately 2500 people. Just one year later, on June 13, 1835, the City Council passed an ordinance creating "a company of fire guards, a protection and salvage company, a hook and ladder company, an engine company, a hose company, and a company of fire wardens. . . ." An appropriation of \$1,000 to construct the first firehouse was made a month later, followed by funding for five 6,000 gallon cisterns and the construction of wells with pumps to keep the cisterns filled when they were being used.

From these simple beginnings, the Columbus Fire Department has grown as the city has expanded to encompass a population of nearly 600,000 people. During its early history, the

United States Department of the Interior
National Park ServiceNational Register of Historic Places
Continuation Sheet

RECEIVED JAN 11 1995

Section number 8 Page 4Engine House #16
Central Ohio Fire Museum
Columbus, Ohio

Statement of Significance (continued)

fire department was dependent on hand pumps. The first steam engine was placed in service in 1855 and was drawn by three horses. The department purchased eight new Ahrens steamers in 1890. The larger size of this new equipment necessitated the enlargement of four buildings and the construction of another four new engine houses. During the 1890s another seven new engine houses were built and six others enlarged to accommodate the new apparatus. Horse-drawn equipment was used throughout the second half of the nineteenth and into the first decade of the 20th century. As a result, the engine houses of this period were designed with large equipment bays, and included a stable for the horses so necessary for the operation of the apparatus. Engine House #16 was the last Columbus firehouse constructed for horsedrawn apparatus. Its design was typical of firehouses in urban areas where they were generally located on confined sites -- the apparatus and horses were kept on the first floor; with the dormitory, locker rooms and restrooms on the upper floors to segregate men from the horses. The hose tower, another feature typical of historic firehouses, served a practical purpose. It was open to the air and allowed the firefighters to hang the hoses to dry.

The transition to motorized apparatus began in 1909, one year after the completion of Engine House #16. The complete change from nineteenth century steamers to twentieth century gasoline engines was completed in December, 1919 when the departments last horses were retired from service. As a result of this transition from the horse-drawn era, many of the historic firehouses remained in use but were altered for the new apparatus. Construction of new engine houses ceased between 1930 and 1951, but since that time, nearly all the historic firehouse has been replaced by new, single story engine houses. These new buildings lack the architectural character, high-quality craftsmanship and attention to detail that was universal among the late 19th and early 20th century buildings.

Engine House #16 was one of several engine houses built of nearly identical design. The others were Engine House #11 at Main and Twenty-second Street (closed in 1970); Engine House #14 at 1710 Parsons Avenue (still in use); and Engine House #15 at Livingston Avenue, east of Ann Street (closed in 1969). These engine houses vary somewhat in size and detail, but all originally featured the double wooden doors, decorative parapet, and square tower with

United States Department of the Interior
National Park Service

**National Register of Historic Places
Continuation Sheet**

RECEIVED JAN 11 1995

Section number 8,9,10 Page 5

**Engine House #16
Central Ohio Fire Museum
Columbus, Ohio**

Statement of Significance (continued)

circular windows and paired round-arched openings. Since its restoration, Engine House #16 is the only one that retains its original appearance.

It is clear from the architectural design of these and other historic Columbus firehouses that they were designed with great care and attention to detail. As public buildings they conveyed a sense of permanence and were a source of civic pride. Engine House #16, with its high level of integrity, is an excellent representation of the quality of late 19th/early 20th century civic and public architecture.

Bibliography

Maddex, Diane, Editor. *Built in the U.S.A., American Buildings from Airports to Zoos*. Washington, D.C. : The Preservation Press, 1985.

Throckmorton, Robert, Jr. Editor, *Columbus, Ohio Division of Fire, 1822-1976*. 1976.

Columbus Register of Historic Properties, Nomination Form, 1983.

Verbal Boundary Description

Lots #1,2 and 3 of Calvin A. Platt Addition, Parcel #66802, measuring 90' x 187.5' as recorded in the Franklin County map room.

Photographs

Photographer:	Jeffrey Darbee Benjamin D. Rickey & Co. 593 South Fifth St. Columbus, Ohio 43206
Date:	September, 1994
Location of Negatives:	Photographer

UNITED STATES DEPARTMENT OF THE INTERIOR
NATIONAL PARK SERVICE

NATIONAL REGISTER OF HISTORIC PLACES
EVALUATION/RETURN SHEET

REQUESTED ACTION: ~~OWNER OBJECTION~~ NOMINATION

PROPERTY Engine House No. 16
NAME:

MULTIPLE
NAME:

STATE & COUNTY: OHIO, Franklin

DATE RECEIVED: 4/10/95 DATE OF PENDING LIST:
DATE OF 16TH DAY: DATE OF 45TH DAY: 5/25/95
DATE OF WEEKLY LIST:

REFERENCE NUMBER: 95000580

NOMINATOR: STATE

REASONS FOR REVIEW:

APPEAL: N DATA PROBLEM: N LANDSCAPE: N LESS THAN 50 YEARS: N
OTHER: N PDIL: N PERIOD: N PROGRAM UNAPPROVED: N
REQUEST: N SAMPLE: N SLR DRAFT: N NATIONAL: N

COMMENT WAIVER: N

☒ ACCEPT ☐ RETURN ☐ REJECT 5.11.95 DATE

ABSTRACT/SUMMARY COMMENTS:

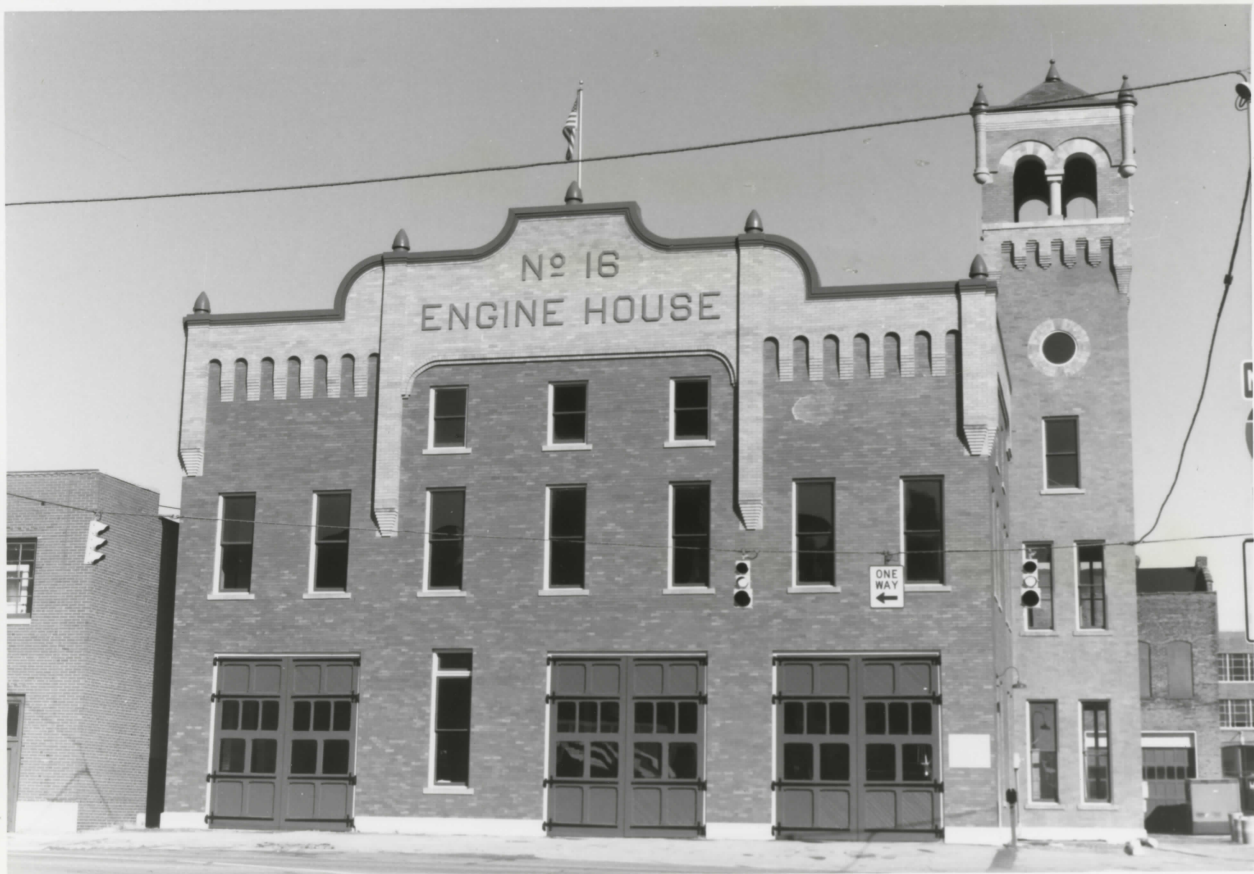
Entered in the
National Register

RECOM./CRITERIA _____

REVIEWER _____ DISCIPLINE _____

TELEPHONE _____ DATE _____

DOCUMENTATION see attached comments Y/N see attached SLR Y/N



ENGINE HOUSE #16

260 N. FOURTH ST.

COLUMBUS, FRANKLIN CO., OHIO

VIEW OF WEST ELEVATION

PHOTO # 1 OF ~~12~~
15



ENGINE HOUSE #16

260 N. FOURTH ST.

COLUMBUS, FRANKLIN CO., OHIO

VIEW OF SOUTH ELEVATION

#2 OF ~~8~~ ~~12~~
15



ENGINE HOUSE #16

260 N. FOURTH ST.

COLUMBUS, FRANKLIN CO., OHIO

VIEW OF SOUTH ELEVATION OF BOTH
BUILDINGS

#3 OF ~~12~~
15



ENGINE HOUSE #16

260 N. FOURTH ST.

COLUMBUS, FRANKLIN CO., OHIO

VIEW OF SOUTH ELEVATION

#4 OF ~~#12~~
15



ENGINE HOUSE #16

260 N. FOURTH ST.

COLUMBUS, FRANKLIN CO, OHIO

VIEW OF EAST ELEVATION

#5 OF ~~#12~~
15



ENGINE HOUSE #16
MAINTENANCE BLDG.

260 N. FOURTH ST. (REAR)

COLUMBUS, FRANKLIN Co., OHIO

VIEW OF WEST ELEVATION

6 OF ~~12~~ 15



ENGINE HOUSE #16

MAINTENANCE BLDG.

260 N. FOURTH ST. (REAR)

COLUMBUS, FRANKLIN CO., OHIO

VIEW OF SOUTH ELEVATION

#7 OF ~~#16~~
15



ENGINE HOUSE #16

MAINTENANCE BLDG.

260 N. FOURTH (REAR)

COLUMBUS, FRANKLIN CO., OHIO

VIEW OF ^{EAST} ~~SOUTH~~ ELEVATION

#8 OF ~~8~~ ~~12~~
15



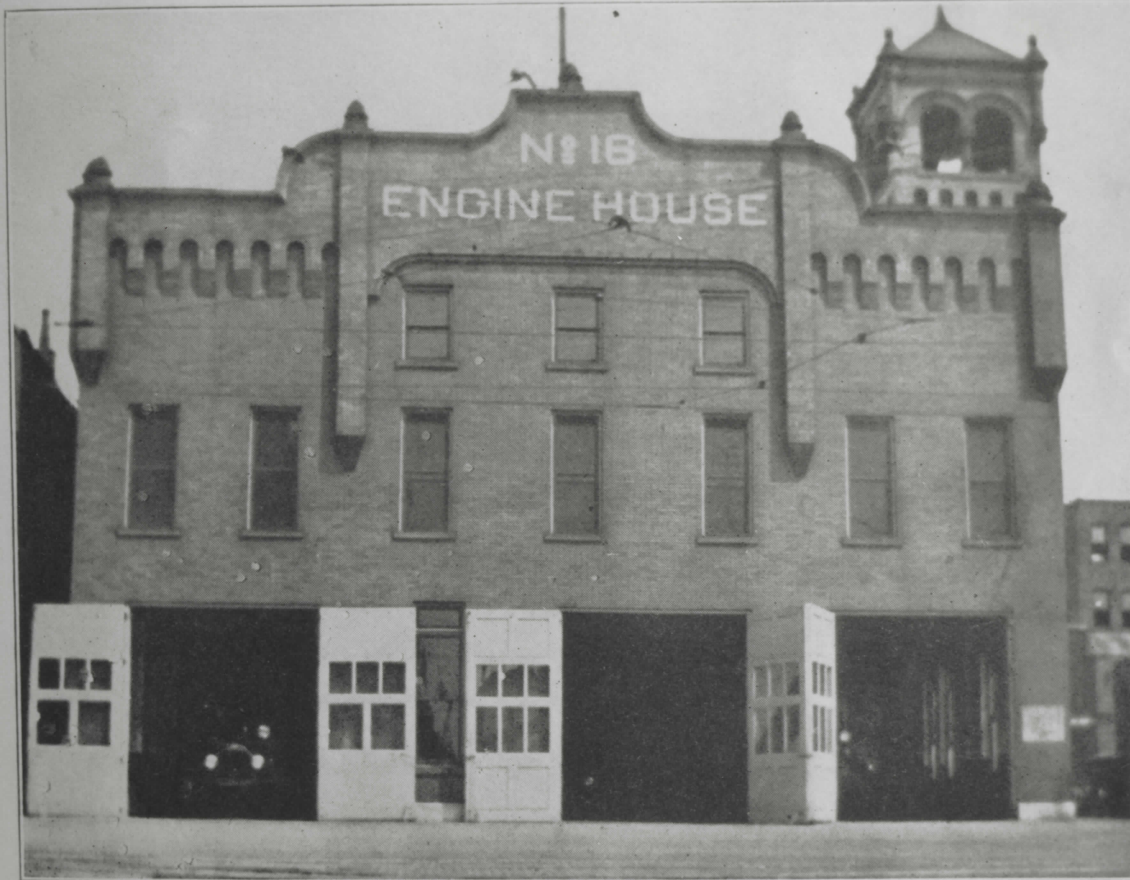
FRANKLIN CO., OHIO
260 N. FRONT ST.
COLUMBUS

ENGINE HOUSE #16

HISTORIC PHOTO c. 1910

#9 OF #15

330211 N



No. 16 ENGINE HOUSE

FRANKLIN Co., OHIO
ENGINE HOUSE #16
260 N. FOURTH ST.
COLUMBUS

HISTORIC PHOTO C. 1930s

#10 OF ~~12~~ 15



FRANKLIN CO., OHIO

ENGINE HOUSE #16

260 N. FOURTH ST.

COLUMBUS

PHOTO C. 1940s

#11 OF ~~16~~ 15

8330211 N N



FRANKLIN Co., OHIO
ENGINE HOUSE #16
260 N. FRONT ST.
COLUMBUS

HISTORIC PHOTO BEFORE RESTORATION

#12 OF ~~12~~ 15

8370211 N N



FRANKLIN CO., OHIO
ENGINE HOUSE #16
260 N. FOURTH ST
COLUMBUS

VIEW OF FIRST FLOOR INTERIOR LOOKING
TOWARD FORMER HORSE STALL DOORS

#13 OF 15



FRANKLIN CO., OHIO
ENGINE HOUSE #14
260 N. FOURTH ST.
COLUMBUS

VIEW OF HOSE TOWER FROM FIRST FLOOR



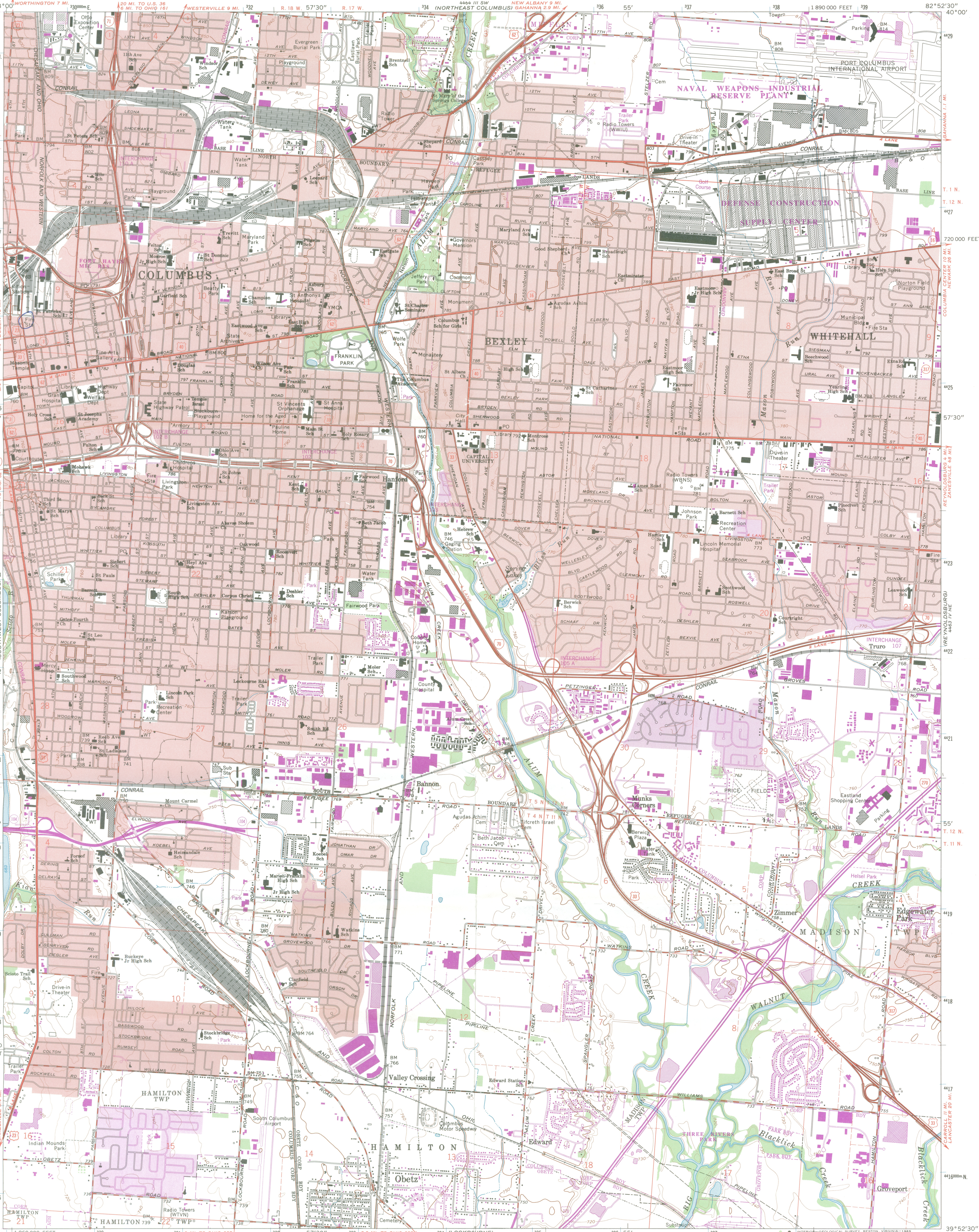
FRANKLIN CO., OHIO
ENGINE HOUSE #16
260 N. FOURTH ST.
COLUMBUS

VIEW LOOKING FROM FORMER STALL
AREA TOWARD FRONT ROOM

#15 OF 15

UNITED STATES
DEPARTMENT OF THE INTERIOR
GEOLOGICAL SURVEY

SOUTHEAST COLUMBUS QUADRANGLE
OHIO-FRANKLIN CO.
7.5 MINUTE SERIES (TOPOGRAPHIC)



ENGINE HOUSE #16
260 N. FOURTH ST
UTM
ZONE 17
E - 329460
N - 4425930

Maped, edited, and published by the Geological Survey
Revised in cooperation with State of Ohio agencies
Planimetry by photogrammetric methods from aerial photographs taken
1953 and 1954. Topography by plane-table surveys 1955. Revised 1964
Polyconic projection. 1927 North American datum
10,000-foot grid based on Ohio coordinate system; south zone
1000-meter Universal Transverse Mercator grid ticks,
zone 17, shown in blue
To place on the predicted North American Datum 1983,
move the projection lines 3 meters south and 10 meters west
as shown by dashed corner ticks
There may be private inholdings within the boundaries of
the National or State reservations shown on this map
Red tint indicates areas in which only landmark buildings are shown
Area north of Base Line lies within the United States Military District
Land lines based on the Base Line of the United States Military District
Area south of Base Line lies within Congress Lands east of the Scioto River
Land lines within Ts. 4 and 5 N.-R. 22 W. based on the Scioto River Base
Land lines within Ts. 11 and 12 N.-R. 21 W. based on the Ohio River Base

UTM GRID AND 1985 MAGNETIC NORTH
DECLINATION AT CENTER OF SHEET

SCALE 1:24,000
CONTOUR INTERVAL 10 FEET
NATIONAL GEODETIC VERTICAL DATUM OF 1929

THIS MAP COMPLIES WITH NATIONAL MAP ACCURACY STANDARDS
FOR SALE BY U.S. GEOLOGICAL SURVEY
DENVER, COLORADO 80225, OR RESTON, VIRGINIA 22092
A FOLDER DESCRIBING TOPOGRAPHIC MAPS AND SYMBOLS IS AVAILABLE ON REQUEST

ROAD CLASSIFICATION
Heavy-duty ——— Light-duty ———
Medium-duty ——— Unimproved dirt ———
Interstate Route ——— U.S. Route ——— State Route ———



SOUTHEAST COLUMBUS, OHIO
39082-HF-TF-024

Revisions shown in purple compiled in cooperation with
State of Ohio agencies from aerial photographs taken
1983. This information not field checked. Map edited 1985
Purple tint indicates extension of urban areas

1964
PHOTOREVISED 1985
DMA 4463 IV NW-SERIES 7852

Ohio Historic Preservation Office

Ohio Historical Center
1982 Velma Avenue
Columbus, Ohio 43211-2497
614/ 297-2470
Fax: 297-2546



OHIO
HISTORICAL
SOCIETY

April 4, 1995



Ms. Carol Shull, Chief of Registration
National Register of Historic Places
National Park Service
P. O. Box 37127
Washington, D. C. 20013-7127

Dear Ms. Shull:

Enclosed please find one (1) new National Register nomination. All appropriate notification procedures have been followed for this new submission.

NEW SUBMISSION

COUNTY

Engine House #16

Franklin

If you have questions or comments about this document, please contact this office.

Sincerely,

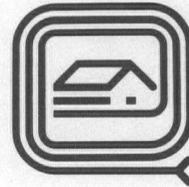
W. Ray Luce

W. Ray Luce
State Historic Preservation Officer

enclosures

Ohio Historic Preservation Office

Ohio Historical Center
1982 Velma Avenue
Columbus, Ohio 43211-2497
614/297-2470
Fax: 297-2546



**OHIO
HISTORICAL
SOCIETY**

~~September 12, 1995~~ SINCE 1885



Mr. Guy Lapsley
National Register of Historic Places
National Park Service
P.O. Box 37127
Washington, D.C. 20013-7127

Dear Mr. Lapsley:

We have noticed an error on the weekly list of actions taken on properties for the week of 5-8-95 through 5-12-95, for the following property:

Engine House No. 16, 260 N. Fourth St., Columbus, Franklin County, Ohio (Reference # 95000580).

Your list shows an Owner Objection for this property. In fact, the property owner, the City of Columbus, has been very supportive of this nomination. I have enclosed a letter from Mayor Gregory Lashutka indicating the City's support for the nomination and the efforts of the Central Ohio Fire Museum, which leases the property from the City of Columbus. We are requesting that this property be listed in the National Register, rather than be determined eligible with an owner objection.

Also, in reviewing our files, we have discovered that we are missing the nomination forms for the following property:

Damascus Grade School, 14923 Morris St., Damascus, Mahoning County, Ohio (Reference # 89001456).

We would appreciate it if you would send us a copy of this nomination. We apologize for the inconvenience. If you require any additional information, please contact me.

Sincerely,

Barbara A. Powers
Department Head
Planning, Inventory, & Registration

*data base
corrected
9/27/95*



City of Columbus
Mayor Gregory S. Lashutka

Office of the Mayor

City Hall
Columbus, Ohio 43215-9014
614/645-7671
FAX 614/645-8955

RECEIVED DEC 19 1994

December 15, 1994

Dr. Ray Luce
State Historic Preservation Office
1982 Velma Avenue
Columbus, OH 43211-2497

Dear Dr. Luce:

The City of Columbus is pleased and honored by the most recent nomination of Engine House #16 to the National Register of Historic Places. This building has played an important role in the development of the City of Columbus.

I support the work of the Fire Museum staff in their efforts to preserve the historic built environment of our community and this building's role in the development of the downtown. The City looks forward to the listing of this building on the National Register.

Diane Cole, the City's Historic Preservation Officer, should be contacted if you need any further assistance with nomination.

Sincerely,

Gregory S. Lashutka
Mayor

GSL:RAB

cc: Diane Cole
Barbara Powers, SHPO