

United States Department of the Interior  
National Park Service

RECEIVED

JAN 04 1988

National Register of Historic Places  
Registration Form

NATIONAL  
REGISTER

This form is for use in nominating or requesting determinations of eligibility for individual properties or districts. See instructions in *Guidelines for Completing National Register Forms* (National Register Bulletin 16). Complete each item by marking "x" in the appropriate box or by entering the requested information. If an item does not apply to the property being documented, enter "N/A" for "not applicable." For functions, styles, materials, and areas of significance, enter only the categories and subcategories listed in the instructions. For additional space use continuation sheets (Form 10-900a). Type all entries.

1. Name of Property

historic name Berry Brothers Bolt Works  
other names/site number N/A

2. Location

street & number 350 East First Avenue N/A not for publication  
city, town Columbus N/A vicinity  
state Ohio code OH county Franklin code 049 zip code 43201

3. Classification

Ownership of Property

- private
- public-local
- public-State
- public-Federal

Category of Property

- building(s)
- district
- site
- structure
- object

Number of Resources within Property

Contributing	Noncontributing
<u>1</u>	<u>      </u> buildings
<u>      </u>	<u>      </u> sites
<u>      </u>	<u>      </u> structures
<u>      </u>	<u>      </u> objects
<u>1</u>	<u>0</u> Total

Name of related multiple property listing:  
N/A

Number of contributing resources previously listed in the National Register N/A

4. State/Federal Agency Certification

As the designated authority under the National Historic Preservation Act of 1966, as amended, I hereby certify that this  nomination  request for determination of eligibility meets the documentation standards for registering properties in the National Register of Historic Places and meets the procedural and professional requirements set forth in 36 CFR Part 60. In my opinion, the property  meets  does not meet the National Register criteria.  See continuation sheet.

Signature of certifying official W. Ray Juce Date 12/23/87  
SHPO

State or Federal agency and bureau \_\_\_\_\_

In my opinion, the property  meets  does not meet the National Register criteria.  See continuation sheet.

Signature of commenting or other official \_\_\_\_\_ Date \_\_\_\_\_

State or Federal agency and bureau \_\_\_\_\_

5. National Park Service Certification

I, hereby, certify that this property is:

- entered in the National Register.  
 See continuation sheet.
- determined eligible for the National Register.  See continuation sheet.
- determined not eligible for the National Register.
- removed from the National Register.
- other, (explain:) \_\_\_\_\_

Patrick Andrus 2/19/88

\_\_\_\_\_  
\_\_\_\_\_  
\_\_\_\_\_

Signature of the Keeper Date of Action

## 6. Function or Use

Historic Functions (enter categories from instructions)  
INDUSTRY/manufacturing facility

Current Functions (enter categories from instructions)  
INDUSTRY/manufacturing facility

## 7. Description

Architectural Classification  
(enter categories from instructions)

Late Victorian  
other: brick factory

Materials (enter categories from instructions)

foundation limestone  
walls brick  
roof asphalt  
other N/A

Describe present and historic physical appearance.

The Berry Brothers Bolt Works is a remarkably intact industrial building located adjacent to the Conrail Railroad line (formerly the Cleveland, Cincinnati, Chicago and St. Louis line) in the near north side of Columbus. Built in stages between 1888 and 1921, this industrial building retains all of its original features, including the original equipment used in the bolt manufacturing process.

Constructed of brick with a limestone foundation, the building consists of a two and one-half story, gable-roofed structure with additions. The front section of the 1888 factory building features a seven-bay main facade and five-bay side elevations. To the rear is a long and rectangular two-story brick section with frame clerestory which was built in stages in 1888, c. 1900, and 1910. Originally one floor with clerestory, this section was expanded by the addition of a second floor, relocation of the original clerestory above this level, and the addition of an exterior stair tower about 1900. In 1910, the building was extended further to the rear by the addition of a second two-story section. The last additions to the building, including the existing frame garage and the gabled brick annealing room on its west side, were completed between 1910 and 1921.

The exterior of the Bolt Works is architecturally distinguished by the original multiple-paned, segmental-arched wood windows which are intact throughout the building. The double hung windows with nine-over-nine sash serve to unify the various stages of building construction. On the main facade and ground floor bays of the side facades, windows are paired within a single segmental arch. In the rear shop area, windows on the first floor are made taller than second floor windows by the addition of a transom, allowing additional light to reach the work area. Windows here are grouped in pairs and separated by brick piers. The frame clerestory displays a single row of 12-paned windows, important for admitting light to this area as well.

United States Department of the Interior  
National Park Service

## National Register of Historic Places Continuation Sheet

Berry Brothers Bolt Works, Columbus, Franklin County, OH

Section number 7 Page 2

---

The exterior stair tower is located on the west side of the building and has a low-pitched hip roof and four levels, with windows at each floor. Adjacent to the tower is the one-story gable-roofed building which functions as the annealing room for the factory. Both the stair tower and the annealing room display the segmental arched window treatment found throughout the factory building. Also on the west side, at the rear of the lot, is the one-story frame garage addition constructed pre-1921.

The main entrance to the building is centrally located on the main facade, and features a round-arched opening with multi-paned transom and original double wood doors. A similar opening exists on the railroad (east) side of the building, next to the factory office on the interior. Other entrances located in the rear sections have segmental arched transoms and wood doors.

The interior of the Berry Brothers Bolt Works has been virtually unchanged since the turn of the century. The first floor of the main building contains the factory office in its southeast corner, complete with the original wood paneling, window trim, desks and chairs, factory safe, and time clock all intact. The remainder of this space functions as the shipping room, as evidenced by the packing boxes and wood kegs located here. The second floor of this building is used as the packing room, and the attic level provided storage.

Connected to the north of the main building is the factory and machine shop, entered through a segmental arched opening. Here, the original bolt-making machinery is located in rows down the side and middle of the space. The machinery, consisting of "open die headers" and "solid die headers," is still operating to produce bolts today. Toward the middle of this space is the factory machine shop where equipment and tools are repaired. The original line shafting equipment has been removed, but little else about this space has been changed. At the north end of the building is the drawing room, the area where equipment is used to draw out and coil the steel wire before it is fed into the headers to produce bolts.

The second floor of the factory is used for secondary operations in the bolt manufacturing process and it retains its original machinery. Here, the bolts are finished and threaded, ribbed or pointed as required. The clerestory area, no longer used today, originally housed the carpenter shop and was used for storage. Throughout the building, the floor plan is open, with exposed structural wood columns.

**8. Statement of Significance**

Certifying official has considered the significance of this property in relation to other properties:

nationally  statewide  locally

Applicable National Register Criteria  A  B  C  D

Criteria Considerations (Exceptions)  A  B  C  D  E  F  G

Areas of Significance (enter categories from instructions)

Architecture

Industry

\_\_\_\_\_

\_\_\_\_\_

\_\_\_\_\_

\_\_\_\_\_

\_\_\_\_\_

\_\_\_\_\_

Significant Person

N/A

Period of Significance

1888 - 1937

\_\_\_\_\_

\_\_\_\_\_

\_\_\_\_\_

Significant Dates

1888

c. 1900

1910

\_\_\_\_\_

Cultural Affiliation

N/A

\_\_\_\_\_

\_\_\_\_\_

Architect/Builder

Unknown

\_\_\_\_\_

State significance of property, and justify criteria, criteria considerations, and areas and periods of significance noted above.

The Berry Brothers Bolt Works is significant under National Register Criteria A & C as an excellent example of a late 19th century manufacturing facility, with its original architectural character and industrial processes intact. One of two bolt factories established to supply the buggy manufacturers and machine shops of late 19th century Columbus, Berry Brothers is the only such facility in the city to survive. The facility continues to manufacture bolts today using its original equipment, providing a significant representation of industrial development in Columbus during the late 19th and early 20th centuries. Built in 1888, with significant expansions in 1900 and 1910, the factory is a classic example of turn-of-the-century industrial architecture. Berry Brothers is additionally significant under Criterion D for its potential to yield important information relating to industrial processes, techniques, and equipment of the late 19th/early 20th century, specifically the bolt manufacturing industry in Columbus.

Within the context of Columbus's late 19th and turn-of-the-century factory buildings, Berry Brothers is an unusual survivor. The building has been virtually unchanged since it was constructed, the original factory processes and machinery are intact and still being used, and the property has remained under the same family ownership for nearly 100 years. Architecturally, Berry Brothers retains integrity in its setting, its classic brick construction and gable roof form, multi-paned wood windows and clerestory, exterior stair tower, open floor plans with solid post and beam construction, and original bolt-making machinery. Retaining integrity of both style and function, Berry Brothers is one of the most distinctive industrial buildings in Columbus.

Other factory buildings from the same period in Columbus have typically been altered to accommodate a changing use, left to deteriorate as vacant buildings, or destroyed to make way for new development. The recent demolition of the Jeffrey Manufacturing Company complex directly south of Berry Brothers, which contained a number of 19th century structures, has pointed up the significance of Berry Brothers' survival in present-day Columbus.

See continuation sheet

United States Department of the Interior  
National Park ServiceNational Register of Historic Places  
Continuation Sheet

Berry Brothers Bolt Works, Columbus, Franklin County, OH

Section number 8 Page 2

The metal forging industry, consisting of plants manufacturing bolts, rods, drop forgings and anvils, was cited in a 1953 Ohio State University study as the oldest remaining industry in Columbus at that time. The five companies which formed this group were all established before 1900; of the five, only Berry Brothers retains its manufacturing facility and operation. Berry Brothers and Columbus Bolt Works were the two bolt manufacturers of this group. The original factory buildings of Columbus Bolt Works were demolished in the 1930s and its later buildings east of the Ohio Penitentiary were torn down within the last few years. The company, now known as Metal Forge, no longer produces bolts and has discontinued factory operations in Columbus.

The bolt manufacturing industry had its start with the establishment of Columbus Bolt Works in the 1850s. The bolt works positioned itself to take advantage of the growing agricultural implement and railroad market in the city at that time. Production shifted to the manufacture of bolts, nuts and screws for the buggy trade, as Columbus became an important manufacturer of wagons and carriages. The Columbus Buggy Company, established in 1875 on the near north side of the city, became the largest manufacturer of its kind in the world. By 1887, Columbus had 18 buggy factories and led the nation in production of "high class" carriages.

Drawn to Columbus by the demand created by the carriage industry, Richard Berry entered into a contract with Columbus Bolt Works to manufacture nuts which could be marketed with their bolts. Only one year later, Berry brought his two brothers to Columbus from Cleveland, erected a building near the Columbus Bolt Works (no longer standing), and installed five new machines for the manufacture of nuts.

In 1888, Berry Brothers constructed the present building on the north side of Columbus and, for the first time, began to produce nuts and bolts independently of Columbus Bolt Works. The new site was adjacent to the "Big Four" Railroad and directly opposite the Jeffrey Manufacturing Company, an important local machine works which provided a ready market for Berry Brothers' bolts. With its proximity to the railroad and north side industries using its product, Berry Brothers quickly became successful. The company made tire bolts, stove and step bolts, carriage and machine bolts, rivets, nuts and coach screws. According to a 1905 History of the Bolt and Nut Industry of America, the Berry Brothers' product "met a generous demand in the market and their business has been uninterruptedly prosperous and progressive.

United States Department of the Interior  
National Park ServiceNational Register of Historic Places  
Continuation Sheet

Berry Brothers Bolt Works, Columbus, Franklin Co., Ohio

Section number 8 Page 3

The original factory built in 1888 consisted of the main 2-1/2 story building fronting on First Avenue and a one story forging area with clerestory to the rear. The facilities were expanded during the early years of the 20th century, as the company's production continued to grow. Each addition was completed with attention to the original design, with complementary treatment of materials, roofline, and fenestration. By the early 1920s, the factory had assumed the appearance which it has today.

The bolt-making equipment used in th Berry Brothers factory today is the original machinery used by the company in its earliest days of production: the most recent machine in use was built in 1927. After buying samples to work from, the Berry Brothers built nearly all of the existing machinery at the factory. Steel wire, which is cleaned, straightened and coiled at the factory, is fed into "headers," machines which cut and forge the bolts. The bolts are then finished and threaded, ribbed or pointed as required. Berry Brothers designed and built their own "open die headers" (as apposed to "solid die headers"), and these remain in use today. The only notable change in the operation of the machines was replacement of the line shafting equipment with individual electric power units during the 1970s.

Because Berry Brothers remains virtually unchanged form the early 20th century, the property has the potential to yield important information about the industrial equipment and processes of the period. According to the 1905 History of the Bolt and Nut Industry of America, 25 bolt (and nut) plants were in operation in Ohio, with two of the plants operating in Columbus. Berry Brothers Bolt Works is the only known plant of this group which remains, retaining all of its machinery and processes (with the only change being the switch from line shafting equipment to individual electric power units. Berry Brothers Bolt Works can contribute to a better understanding of turn-of-the-century industrial practices. Berry Brothers continues to use machinery and techniques which may be documented to a degree in literature of the period, but which are rare in the context of their original setting and continued operation for nearly 100 years. From the custom designed open die headers and solid die headers, to drawing room equipment and secondary operations equipment, Berry Brothers remains a veritable working museum, complete with original time clock, desks, and safe. Questions on types of equipment and processes used, how these related to each other, and how the manufacturing process functioned can be answered in the Berry Brothers facility. With industrial facilities vanishing rapidly in Columbus, Berry Brothers is the only intact historic industrial facility in Columbus, and is important as a remnant of a once thriving industry.

United States Department of the Interior  
National Park Service

**National Register of Historic Places  
Continuation Sheet**

Berry Brothers Bolt Works, Columbus, Franklin Co., Ohio

Section number 8 Page 4

---

Berry Brothers continues to manufacture bolts under the management of Richard Berry III, grandson of the founder. The company has preserved its late 19th century manufacturing processes, making it an important contributor to the field of industrial archaeology. The major changes in the factory have stemmed from competition from imports of nuts and bolts during the 20th century, reducing demand and slowing production. Berry Brothers reached its peak of production in the 1950s, with a work force of 75. Since that time, the company has continuously operated to produce bolts (production of nuts was discontinued due to imports) and today operates with a work force of seven.

**9. Major Bibliographical References**

Baist's Property Atlas, City of Columbus, Ohio. Philadelphia: 1899.  
Berry, Richard G., III. Interview, September 18, 1987.  
The City of Columbus and Its Resources, 1890.  
Columbus City Directories.  
Hunker, Henry. "Columbus, Ohio: The Industrial Evolution of a Commercial Center."  
The Ohio State University: 1953.  
Miller, J. A. & Co. A Glimpse at Columbus and Her Industries. November, 1890.  
Sanborn Insurance Company Maps of Columbus. 1891, 1901, 1921, 1937.  
Wilbur, W. R. History of the Bolt and Nut Industry of America. Cleveland: 1905.

See continuation sheet

Previous documentation on file (NPS): N/A

- preliminary determination of individual listing (36 CFR 67) has been requested
- previously listed in the National Register
- previously determined eligible by the National Register
- designated a National Historic Landmark
- recorded by Historic American Buildings Survey # \_\_\_\_\_
- recorded by Historic American Engineering Record # \_\_\_\_\_

Primary location of additional data:

- State historic preservation office
- Other State agency
- Federal agency
- Local government
- University
- Other

Specify repository: \_\_\_\_\_

**10. Geographical Data**

Acreage of property 1.461 acres

UTM References

A 17 | 3296415 | 414217300  
Zone Easting Northing

C \_\_\_\_\_ | \_\_\_\_\_ | \_\_\_\_\_

B \_\_\_\_\_ | \_\_\_\_\_ | \_\_\_\_\_  
Zone Easting Northing

D \_\_\_\_\_ | \_\_\_\_\_ | \_\_\_\_\_

See continuation sheet

Verbal Boundary Description

Plat A, Partition of Robert Neil's Estate. Lot is bounded on the east by Conrail RR tracks, on the south by First Avenue, and on the north and west by Dresser Industries.

1/2 of Section 4, permanent parcel #003141 District 10

See continuation sheet

Boundary Justification

The boundary includes the entire city lot that has historically been associated with the property.

See continuation sheet

**11. Form Prepared By**

name/title Judy Williams  
organization Benjamin D. Rickey & Co. date November 9, 1987  
street & number 391 Library Park South telephone (614) 221-0358  
city or town Columbus state Ohio zip code 43215

88 000051

NATIONAL REGISTER OF HISTORIC PLACES  
EVALUATION/RETURN SHEET

Berry Brothers Bolt Works  
Franklin County  
OHIO

JAN - 4 1988

Working No. \_\_\_\_\_  
Fed. Reg. Date: 2/7/89  
Date Due: 2/5/88 - 2/8/88  
Action:  ACCEPT 2-79-88  
 RETURN  
 REJECT

- resubmission
- nomination by person or local government
- owner objection
- appeal

Federal Agency: \_\_\_\_\_  
 NR decision

Substantive Review:  sample  request  appeal

Reviewer's comments:

*Remarkably intact late 19th/early 20th century industrial facility complete with all original machinery (and actually still in production). Nomination does good job explaining historic, architectural, and information potential significance.*

Recom./Criteria accept A, C, D  
Reviewer Patrick Andrus  
Discipline Historian  
Date 2/19/88  
\_\_\_\_\_ see continuation sheet

Nomination returned for:  technical corrections cited below  
 substantive reasons discussed below

1. Name

2. Location

3. Classification

Category	Ownership	Status	Present Use
	Public Acquisition	Accessible	

4. Owner of Property

5. Location of Legal Description

6. Representation in Existing Surveys

Has this property been determined eligible?  yes  no

7. Description

Condition	Check one	Check one
<input type="checkbox"/> excellent	<input type="checkbox"/> deteriorated	<input type="checkbox"/> original site
<input type="checkbox"/> good	<input type="checkbox"/> ruins	<input type="checkbox"/> moved
<input type="checkbox"/> fair	<input type="checkbox"/> unexposed	date _____
	<input type="checkbox"/> unaltered	
	<input type="checkbox"/> altered	

Describe the present and original (if known) physical appearance

- summary paragraph
- completeness
- clarity
- alterations/integrity
- dates
- boundary selection

**8. Significance**

Period      Areas of Significance—Check and justify below

Specific dates                      Builder/Architect

Statement of Significance (*in one paragraph*)

- summary paragraph
- completeness
- clarity
- applicable criteria
- justification of areas checked
- relating significance to the resource
- context
- relationship of integrity to significance
- justification of exception
- other

Harry Brothers Bolt Works  
 Franklin County  
 OHIO

**9. Major Bibliographical References**

**10. Geographical Data**

Acreage of nominated property \_\_\_\_\_

Quadrangle name \_\_\_\_\_

UTM References \_\_\_\_\_

Verbal boundary description and justification

?

**11. Form Prepared By**

**12. State Historic Preservation Officer Certification**

The evaluated significance of this property within the state is:

\_\_\_\_ national      \_\_\_\_ state      \_\_\_\_ local

State Historic Preservation Officer signature

title                      date

**13. Other**

- Maps
- Photographs
- Other

Questions concerning this nomination may be directed to \_\_\_\_\_

Signed \_\_\_\_\_ Date \_\_\_\_\_ Phone: \_\_\_\_\_



Berry Brothers Bolt Works  
350 East First Avenue  
Columbus, Franklin Co., Ohio  
Photo by J. Williams, 9/87  
Neg. at 391 Library Park, Cols.

Photo # 1  
View of main facade, looking N



Berry Brothers Bolt Works  
350 East First Avenue  
Columbus, Franklin Co., Ohio  
Photo by J. Williams, 9/87  
Neg. at 391 Library Park, Cols.

Photo # 2  
View of south and east elev.,  
looking north



Berry Brothers Bolt Works  
350 East First Avenue  
Columbus, Franklin Co., Ohio  
Photo by J. Williams, 9/87  
Neg. at 391 Library Park, Cols.

Photo # 3  
View of west elevation



Berry Brothers Bolt Works  
350 East First Avenue  
Columbus, Franklin Co., Ohio  
Photo by J. Williams, 9/87  
Neg. at 391 Library Park, Cols.

Photo # 4  
View of gable-roofed addn.  
and stair tower, looking NE



Berry Brothers Bolt Works  
350 East First Avenue  
Columbus, Franklin Co., Ohio  
Photo by J. Williams, 9/87  
Neg. at 391 Library Park, Cols.

Photo # 5  
View of west elevation, looking  
NE



Berry Brothers Bolt Works  
350 East First Avenue  
Columbus, Franklin Co., Ohio  
Photo by J. Williams, 9/87  
Neg. at 391 Library Park, Cols.

Photo # 4  
View of 1910 addition, looking  
NE



Berry Brothers Bolt Works  
350 East First Avenue  
Columbus, Franklin Co., Ohio  
Photo by J. Williams, 9/87  
Neg. at 391 Library Park, Cols.

Photo # 7  
Detail of stair tower



Berry Brothers Bolt Works  
350 East First Avenue  
Columbus, Franklin Co., Ohio  
Photo by J. Williams, 9/87  
Neg. at 391 Library Park, Cols.

Photo # *B*  
View of east elevation, looking  
NW



Berry Brothers Bolt Works  
350 East First Avenue  
Columbus, Franklin Co., Ohio  
Photo by J. Williams, 9/87  
Neg. at 391 Library Park, Cols.

Photo # 9

View of east elevation and  
shed, looking south



Berry Brothers Bolt Works  
350 East First Avenue  
Columbus, Franklin Co., Ohio  
Photo by J. Williams, 9/87  
Neg. at 391 Library Park, Coles.

Photo # *10*  
First floor, 1888 bldg.,  
view of office in SE corner



Berry Brothers Bolt Works  
350 East First Avenue  
Columbus, Franklin Co., Ohio  
Photo by J. Williams, 9/87  
Neg. at 391 Library Park, Cols.

Photo # 11  
View of factory office



Berry Brothers Bolt Works  
350 East First Avenue  
Columbus, Franklin Co., Ohio  
Photo by J. Williams, 9/87  
Neg. at 391 Library Park, Cols.

Photo # 12  
View of original office safe



Berry Brothers Bolt Works  
350 East First Avenue  
Columbus, Franklin Co., Ohio  
Photo by J. Williams, 9/87  
Neg. at 391 Library Park, Cols.

Photo # 13  
First floor, 1888 bldg.,  
shipping room, looking NW



Berry Brothers Bolt Works  
350 East First Avenue  
Columbus, Franklin Co., Ohio  
Photo by J. Williams, 9/87  
Neg. at 391 Library Park, Cols.

Photo # *14*  
View of first floor factory,  
looking north



Berry Brothers Bolt Works  
350 East First Avenue  
Columbus, Franklin Co., Ohio  
Photo by J. Williams, 9/87  
Neg. at 391 Library Park, Col.

Photo # 15  
View of first floor factory,  
looking south



Berry Brothers Bolt Works  
350 East First Avenue  
Columbus, Franklin Co., Ohio  
Photo by J. Williams, 9/87  
Neg. at 391 Library Park, Cols.

Photo # 14  
View of second floor factory,  
secondary operations



Berry Brothers Bolt Works  
350 East First Avenue  
Columbus, Franklin Co., Ohio  
Photo by J. Williams, 9/87  
Neg. at 391 Library Park, Cols.

Photo # 17  
Second floor, 1888 bldg.,  
packing room, looking SE



Berry Brothers Bolt Works  
350 East First Avenue  
Columbus, Franklin Co., Ohio  
Photo by J. Williams, 9/87  
Neg. at 391 Library Park, Cols.

Photo # *18*  
Clerestory area, interior  
view



Berry Brothers Bolt Works  
350 East First Avenue  
Columbus, Franklin Co., Ohio  
Photo by J. Williams, 9/87  
Neg. at 391 Library Park, Cols.

Photo # 19  
View of remaining lineshafting  
mechanism

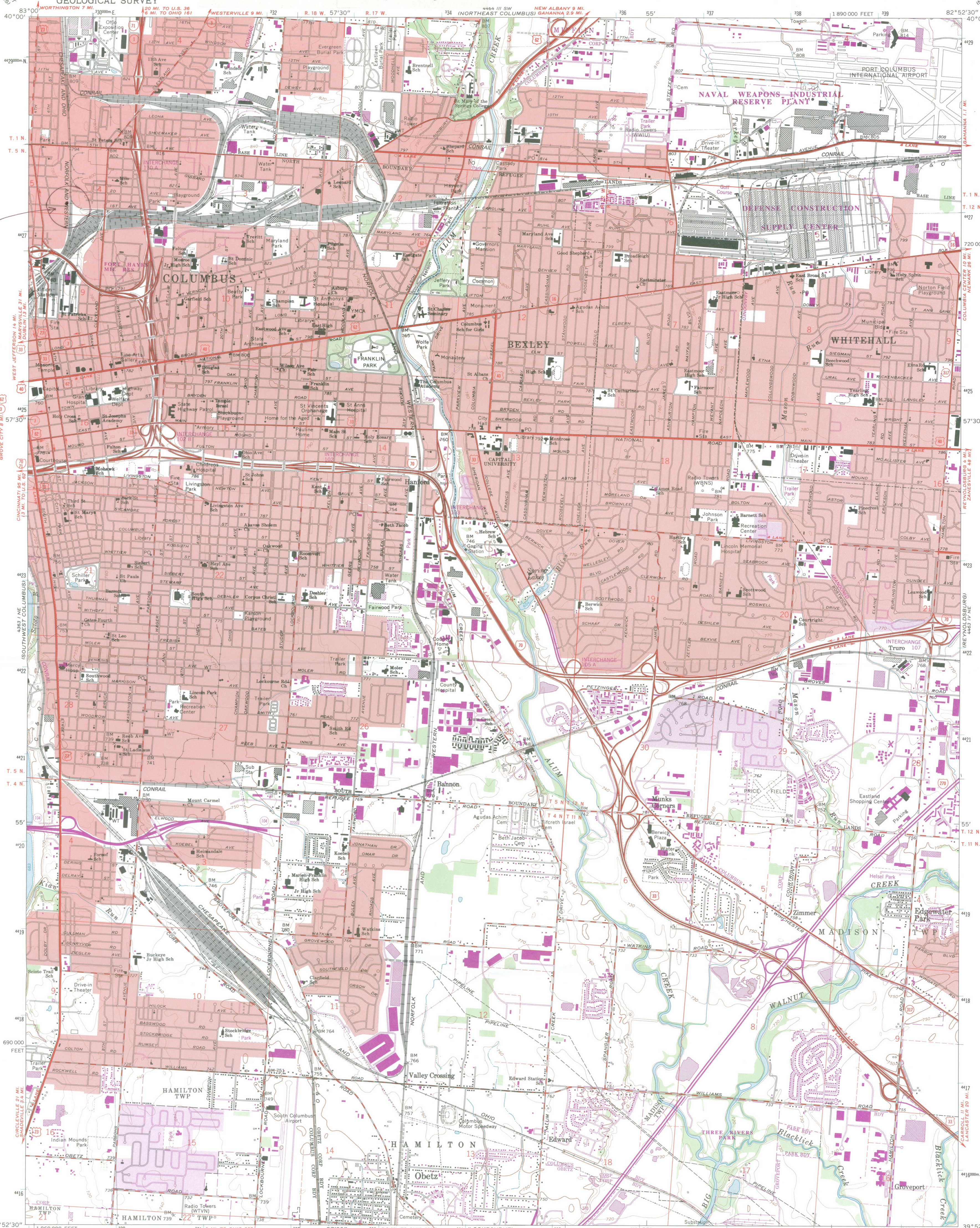
UNITED STATES  
DEPARTMENT OF THE INTERIOR  
GEOLOGICAL SURVEY

Berry Brothers Bolt Works  
350 East First Avenue  
Columbus, Franklin Co., Ohio

UTM references:  
17 329645 4427300  
(easting) (northing)

SOUTHEAST COLUMBUS QUADRANGLE  
OHIO—FRANKLIN CO.  
7.5 MINUTE SERIES (TOPOGRAPHIC)

property location  
↑  
N



Mapped, edited, and published by the Geological Survey  
Revised in cooperation with State of Ohio agencies  
Planimetry by photogrammetric methods from aerial photographs taken  
1953 and 1954. Topography by planimetric surveys 1955. Revised 1964  
Polyconic projection. 1927 North American datum  
10,000-foot grid based on Ohio coordinate system, south zone  
1000-meter Universal Transverse Mercator grid ticks,  
zone 17, shown in blue  
To place on the predicted North American Datum 1983,  
move the projection lines 3 meters south and 10 meters west  
as shown by dashed corner ticks  
There may be private inholdings within the boundaries of  
the National or State reservations shown on this map  
Red tint indicates areas in which only landmark buildings are shown  
Area north of Base Line lies within the United States Military District  
Land lines based on the Base Line of the United States Military District  
Area south of Base Line lies within Congress Lands east of the Scioto River  
Land lines within Ts. 4 and 5 N.-R. 22 W. based on the Scioto River Base  
Land lines within Ts. 11 and 12 N.-R. 21 W. based on the Ohio River Base

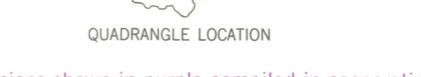


SCALE 1:24 000  
CONTOUR INTERVAL 10 FEET  
NATIONAL GEODETIC VERTICAL DATUM OF 1929

ROAD CLASSIFICATION

Heavy-duty	Light-duty
Medium-duty	Unimproved dirt

Interstate Route U.S. Route State Route



SOUTHEAST COLUMBUS, OHIO  
39082-H8-TF-024

Revisions shown in purple compiled in cooperation with  
State of Ohio agencies from aerial photographs taken  
1983. This information not field checked. Map edited 1985  
Purple tint indicates extension of urban areas

1964  
PHOTOREVISED 1985  
DMA 4463 IV NW-SERIES 7852

November 12, 1987

Dr. W. Ray Luce  
State Historic Preservation Officer  
Ohio Historic Preservation Office  
Ohio Historical Center  
1985 Velma Avenue  
Columbus, Ohio 43211

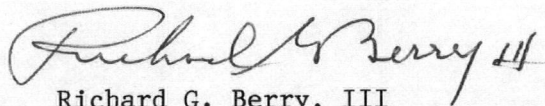
Dear Dr. Luce:

I am aware that my building, the Berry Brothers Bolt Works, at 350 East First Avenue, Columbus, Ohio, is being nominated to the National Register of Historic Places for individual listing.

I have discussed the National Register nomination procedures with the preparer of the nomination, and I am aware of the implications of listing a property in the National Register.

This letter is to express my support of the nomination of my property.

Sincerely,

  
Richard G. Berry, III



City of Columbus  
Mayor Dana G. Rinehart

## Office of the Mayor

City Hall  
Columbus, Ohio 43215-4184  
(614) 222-7671

RECEIVED DEC 9 1987

December 1, 1987

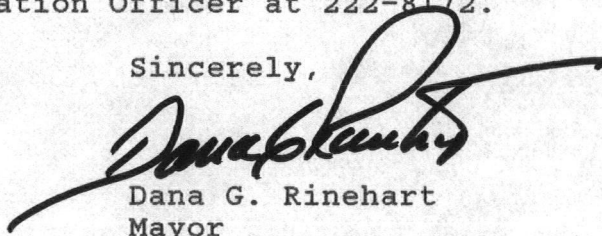
Mr. Ray Luce  
Ohio Historic Preservation Office  
1985 Velma Avenue  
Columbus, Ohio 43215

Dear Mr. Luce:

The City of Columbus has recently received a National Register Nomination for the Berry Brothers Bolt Works. In accordance with the certification agreement the city of Columbus maintains with your office, this document has been reviewed and in the City's opinion meets the criteria for designation. I recommend listing of this nomination on the National Register.

If you have any questions, please contact Ty Potterfield, the City's Historic Preservation Officer at 222-8172.

Sincerely,



Dana G. Rinehart  
Mayor

DGR:GRL



City of Columbus  
Mayor Dana G. Rinehart

## Development Department

G. Raymond Lorello, Director

December 9, 1987

Ray Luce  
State Historic Preservation Officer  
Ohio Historical Society  
1985 Velma Avenue  
Columbus, Ohio 43211

Dear Mr. Luce:

In conformance with the certification agreement between the City of Columbus and your office, the Italian Village Commission reviewed the nomination of the Berry Brothers Bolt Works to the National Register of Historic Places. These comments have been forwarded to the Columbus Historic Resources Commission in conformance with the provisions of the the memorandum of understanding between the City's four historic commissions. The purpose of this letter is to transmit those comments to you.

The Italian Village Commission believes that the Berry Brothers Bolt Works meets the National Register Criteria for Evaluation. The Commission fully supports the nomination and recognizes the Berry Works as one of the last intact manufacturing facilities in what was one of the first industrial communities in the City of Columbus.

If you have any questions regarding these comments please call Ty Potterfield the Columbus historic preservation officer at 222-8172.

Sincerely,

*Georgia Ehlers*

Georgia Ehlers, Chairperson  
Historic Resources Commission

cc: Rob Vogt

(165)

**Director's Office**

140 Marconi Boulevard/8th Floor  
Columbus, Ohio 43215-2315  
(614) 222-8591

**Economic Development Division**

140 Marconi Boulevard/6th Floor  
Columbus, Ohio 43215-2315  
(614) 222-8172

**Planning Division**

140 Marconi Boulevard/8th Floor  
Columbus, Ohio 43215-2315  
(614) 222-8502

**Development Regulation Division**

140 Marconi Boulevard/2nd Floor  
Columbus, Ohio 43215-2315  
(614) 222-7433

Ohio Historic Preservation Office

1985 Velma Avenue  
Columbus, Ohio 43211  
614/297-2470



OHIO  
HISTORICAL  
SOCIETY  
SINCE 1885

December 30, 1987

Ms. Carol Shull, Chief  
National Register of Historic Places  
National Park Service  
Department of the Interior  
P.O. Box 37127  
Washington, D.C. 20013-7127

Dear Carol:

Enclosed are 3 new National Register nominations. All of the appropriate notification procedures have been followed for these new submissions.

New Submissions

Glidden, Francis K., House  
Weizer Building  
Berry Brothers Bolt Works

County

Cuyahoga  
Cuyahoga  
Franklin

Please contact me if you have any questions.

Sincerely,

W. Ray Luce  
State Historic Preservation Officer

WRL:ae  
Enclosures