

**United States Department of the Interior
Heritage Conservation and Recreation Service**

**National Register of Historic Places
Inventory—Nomination Form**

For HCERS use only

received DEC 8 1980

date entered APR 1 1982

See instructions in *How to Complete National Register Forms*
Type all entries—complete applicable sections

1. Name

historic Yellow Springs Historic District

and/or common

2. Location

Roughly bounded by RR tracks Yellow Springs-Fairfield Rd., High and Herman Sts.

street & number Irregular area between Dayton and Corry Streets not for publication

city, town Yellow Springs vicinity of congressional district 7th

state Ohio code 039 county Greene code 057

3. Classification

Category	Ownership	Status	Present Use
<input checked="" type="checkbox"/> district	<input type="checkbox"/> public	<input checked="" type="checkbox"/> occupied	<input type="checkbox"/> agriculture
<input type="checkbox"/> building(s)	<input type="checkbox"/> private	<input type="checkbox"/> unoccupied	<input checked="" type="checkbox"/> commercial
<input type="checkbox"/> structure	<input checked="" type="checkbox"/> both	<input type="checkbox"/> work in progress	<input checked="" type="checkbox"/> educational
<input type="checkbox"/> site	Public Acquisition	Accessible	<input type="checkbox"/> entertainment
<input type="checkbox"/> object	<input type="checkbox"/> in process	<input checked="" type="checkbox"/> yes: restricted	<input checked="" type="checkbox"/> government
	<input type="checkbox"/> being considered	<input type="checkbox"/> yes: unrestricted	<input type="checkbox"/> industrial
		<input type="checkbox"/> no	<input type="checkbox"/> military
			<input type="checkbox"/> museum
			<input type="checkbox"/> park
			<input checked="" type="checkbox"/> private residence
			<input checked="" type="checkbox"/> religious
			<input type="checkbox"/> scientific
			<input type="checkbox"/> transportation
			<input type="checkbox"/> other:

4. Owner of Property

name Multiple ownership

street & number

city, town vicinity of state

5. Location of Legal Description

courthouse, registry of deeds, etc. Greene County Courthouse

street & number 45 North Detroit Street

city, town Xenia state Ohio

6. Representation in Existing Surveys

title Ohio Historic Inventory has this property been determined eligible? yes no

date Summer 1979 federal state county local

depository for survey records Ohio Historic Preservation Office

city, town Columbus state Ohio

7. Description

Condition

excellent

good

fair

deteriorated

ruins

unexposed

Check one

unaltered

altered

Check one

original site

moved date _____

Describe the present and original (if known) physical appearance

Yellow Springs is situated on a wide plain, sloping gently toward the deep, wooded glen running along its eastern edge. The Glen Helen Nature Preserve, cradle of Yellow Springs, is visually detached from the village and separated from it by the railroad. The village retains its original grid-iron pattern, laid out over the Dayton Street, Xenia Avenue, and Corry Street diagonals. Although Yellow Springs contained over 700 plots in 1857, many were never developed, so today the village displays wooded lots and a relatively low density of buildings. Mills Lawn still serves as a public square, occupied by the elementary school and faced by two churches.

All of the buildings in the historic district date from after 1840 when the town's growth began to shift westward across the creek and eventually beyond the tracks of the Little Miami R.R. Most of the construction during the 1846-56 period, when the village reached its peak and took its present form, consisted of modest brick or frame dwellings found throughout the district. Generally vernacular in character, many of these houses carry recurrent traits from the popular Greek Revival style and a few from the Late Federal style; numerous examples of the folk-type 'I'-house can be found, plus, one log structure. Commercial activity during the era of expansion was concentrated near the present business district, however most of the existing commercial structures date from after 1860 and collectively exhibit an unusual variety of architectural style for a town of this size. After 1860 the pace of residential construction slackened considerably, yet fine examples of vernacular and high-design architectural styles were constructed in the village through the 1920s, despite a noticeable lack of 1880-1895 building styles.

Several early homes along Xenia Avenue (U.S. Route 68) have been converted to commercial use; however, most structures continue to be used as they were originally intended—by far, the majority are residential. The first schoolhouse (76), built in 1845, is now a residence; the Union School (56), built in 1872, has been adapted by the municipal offices; and the John Bryan High School (33) is presently used as a community center. Many buildings in the district are maintained in an excellent state of preservation, however, alterations in siding material, porches, and additions are not uncommon in Yellow Springs. There are 332 buildings in the district, plus 155 associated structures, including outhouses, carriage houses, garages, and storage sheds. Of the main buildings, 243 are feature (73.2%), 37 are background structures (11.4%) contributing in scale and age although not in architectural integrity, and 51 are intrusions (15.4%). Structural amenities include several cast iron fences, picket fences, trellises, and manual water pumps. The streets are generally 60-75 feet wide (r.o.w.), and except for the business district and the block immediately south of Mills Lawn, most houses sit moderately close to the street with small front yards and spacious backyards or sidelots.

Most of the post-World War II residential and industrial development has taken place outside of the older section of the village, although several intrusions have replaced original buildings within it. Generally, the boundaries have been drawn to exclude areas beyond visual barriers or where the concentration of significant properties noticeably drops. Glen Helen delimits the district on the east, green space and research/light industrial development on the south, newer residential development on the west and north, and commercial intrusions on the north end of the business district.

**United States Department of the Interior
Heritage Conservation and Recreation Service**

**National Register of Historic Places
Inventory—Nomination Form**

Yellow Springs Historic District, Greene County, Ohio

Continuation sheet

Item number 7

Page 2

For HCERS use only

received DEC 8 1980

date entered APR 1 1982

Type A:

Greek Revival is the principal architectural theme in Yellow Springs, reappearing throughout the district in a broad range of muted forms, adapted to 1, 1½ and 2-story structures. Several pedimented gables are found (76, 99, 130, 275, 305, 315, 331); however, the typical design employs eaves returns with wide raking frieze and a boxed cornice, occasionally with dentils. Brick pilasters, or stylized endboards on frame dwellings, lend visual support to the cornice. A metal roof, trabeated lintels, 6/6 double-hung sash, symmetrical proportions and an offset entrance on the gable facade are standard features. Although St. Paul's Catholic Church (160) has pointed-arch windows, both it and the First Baptist Church (315) are Greek Revival; both have had their spires removed. #20 and #173 are stuccoed, 20th-century replicas of the gardener's cottage (130) of the old Mills mansion. The Horace Mann Building (149) also dates from the 20th century.

Type B:

The Late Federal style can be discerned in only several buildings in Yellow Springs, all made of brick and characterized by low-pitched, side gables and double or bridged, end-chimneys. Buildings are 3-5 bays wide with central entrance, 3 bays deep and generally display close verges and slightly projecting eaves with frieze. The Birch House (47), built in 1842, is the oldest existing building in Yellow Springs and one of the best preserved. It also displays pilasters across the facade and a decorative, open porch. The Wolford Cottage (242) varies in its stepped parapets and single story.

Type C:

Few structures in the district bear more than a slight resemblance to the Gothic Revival and then, usually only through their steeply-pitched roof lines or cross-gable roof plan. Although several homes in the village retain decoratively carved vergeboards, none of the Type C buildings do. 116 West Whiteman St. (256) is the best example: rectangular in plan with flush-board facade, label molds, cruciform attic vent and finials.

Type D:

The true Italianate and Second Empire styles are evident in only a handful of buildings in the village, built between 1865-75. All are two-story, brick and in very fine condition. 403 Xenia Avenue (307) and the Howell House (120) have 2/2 sash, round-arch windows and shouldered and round-arch hoods respectively. Both retain open, wooden porches with chamfered posts; the Howell House retains all original features, including patterned slate roof, and is one of the most handsome and well-preserved homes in the district. The Fess House (330) and the old Union School (56) are mansarded with hooded, segmental-arch windows and decorated dormers. The Fess House has metal quoins, side bays, 2/2/2 and 2/2 sash, paired brackets and porch additions. The Union School has brick pilasters; very narrow, paired, 4/4 sash; mansarded, central tower with a round window; round-arch entrance bay with a brick infill design; and a low, hip roof. Day House (147) is a fine, frame, Italian Villa Revival, unique in Yellow Springs.

Type E:

Vernacular cottages constructed in brick or frame between 1850 and 1885 are common in the village. Though the typical form is a 1½-story frame building utilizing a medium-pitched roof, front gable, decorated veranda, 2/2 or 6/6 sash; variations in roof slope and material, plan orientation and decorative treatment are not uncommon. #69, #70 and #194 are

**United States Department of the Interior
Heritage Conservation and Recreation Service**

**National Register of Historic Places
Inventory—Nomination Form**

Yellow Springs Historic District, Greene County, Ohio

Continuation sheet

Item number 7

Page 3

For HCRS use only

received DEC 8 1980

date entered APR 1 1982

noteworthy for their remarkable similarities: steeply-pitched roof; narrow, 1/1 sash; polygonal front bay; side porch and entrance; and location on adjacent lots. 123 Glen Street (91) is a variation with steeply-pitched hip roof and flared eaves covering an ell-shaped veranda.

Type F:

Folk-type houses of 'I' configuration are scattered though the district. Typically, this form has two stories, is two rooms wide with a central hall (3 bays), is one room deep (1-2 bays), and has a one-story porch or veranda across the front. Most of these were built early in the 1850-1880 period and display low-pitched roofs with side gables and single end-chimneys. This style is best represented by 326 Phillips Street (168), retaining its front veranda and rear, one-story, kitchen wing.

Type G:

This type denotes a two-story structure, vernacular in design, whose low-pitched gable faces the street. Ell or rectangular plans are the most common, with the entrance in the central bay (of three) or in the re-entrant angle as in #187 and # 219. Sash vary with the date of construction (1850-1900), and lintels are usually either trabeated on brick buildings or shaped on frame buildings. The open veranda is a common feature.

Type H:

Type H is also vernacular, differing from Type G basically by having a metal, hip roof rather than gable. Built between 1855 and 1890, the sash are largely 2/2, and the house may have a polygonal, two-story front bay, as in 140 East Limestone Street (121).

Type I:

Type I represents 20th-century, vernacular, two-story, frame houses which seem to derive their form from a diluted mixture of the Classical Revival and the Bungalow. Usually a medium- to high-pitched gable with eaves returns faces the street, although the hip roof is sometimes employed as in #116 and #153. Sash are 1/1, less narrow than in earlier styles, with plain surrounds, and a variety of shapes may be used on one house. Novelty siding and one-story verandas are common features.

Type J:

Brick "row" buildings with two-story, storefront facades are characteristic of only several commercial buildings in the business district. Victorian Italianate in origin, they they possess a flat roof, panelled or bracketed cornices, and repeating second-story window openings with incised metal hoods. The decorative post-and-lintel metal work preserved along the ground floor of 118-128 Dayton Street (38-42), is missing or covered on other buildings.

Type K:

A variety of revival styles exists in the village. The basic Colonial Revival is best exemplified by houses in the College Park block located immediately south of Mills Lawn, largely developed in the early 1920s for faculty housing. The Arthur Morgan House (129) is 2½ stories tall; five bays wide; displays wide, interior-joined end-chimneys, dormers, and pedimented entrance with Dutch benches. Exterior walls have corner pilasters and are

**United States Department of the Interior
Heritage Conservation and Recreation Service**

**National Register of Historic Places
Inventory—Nomination Form**

Yellow Springs Historic District, Greene County, Ohio

Continuation sheet

Item number 7

Page 4

For HCERS use only

received DEC 8 1980

date entered APR 1 1982

treated with stucco. 6/1 sash, eaves returns, and medium- to steep-pitched roof lines are standard features in the district. Drake House (128) is unique in its semi-circular window bays with decorative "keystones". Rockford Chapel (185) is a cottage form of the style, featuring Flemish bond brickwork, 9/9 sash, radiating brick lintels, shutters, and S-shaped holdbacks. The Bryan Community Center (33), built in 1928, is a good example of Spanish Colonial Revival architecture featuring irregular bays, a decorative arcade and paired, round-arched windows supported by columns, an iron balconet, and a round-arch entrance flanked by iron lamps. Exterior walls are constructed of buff brick, highlighted by two terra cotta medallions and decorative trim. 140 West Limestone Street (131) was designed in the Dutch Colonial style, complete with gambrel roof and flared eaves, 6/6 sash with entablature cornices, and a classic entrance. The New England gambrel roof is featured on several houses, including #182, #238, and #250. Curl Gymnasium (189) and West Hall (145) on the Antioch College campus represent two variations in Neo-Georgian architecture. West Hall possesses a gambrel slate roof with large, bridged end-chimneys embellished with lunette windows. Two front entrances utilize fan- and side-lights and the window openings are segmental-arch with radiating brick lintels. Two pedimented, frame dormers decorate the roof. Curl Gymnasium is noteworthy for three, large murals by Gilbert Wilson dedicated in 1940 in the East Gym. They illustrate social realism in painting, common in artwork of this time. The Oster House (152) is the only Neo-Federal house in the district.

Type L:

The bungalow in Yellow Springs is typically a simple, 1½-story, brick or frame house with broad gables of various pitch. Rafters, ridge beams, and purlins extend beyond the wall and roof. Shed dormers, tapered porch posts and size variations in window openings are also typical features. The finest examples are #88 and #309; #88 retains a red, tile roof; hip roof dormers; and an attractive cobblestone foundation.

Type M:

Eleven buildings are exceptions to the styles described above:

- * The rear section of the Trail Tavern (281) is a V-notched, log structure erected in 1843 by Francis Hafner, a baker from Cincinnati.
- * Antioch's Main Building (140) and North and South Halls (139, 141) are Romanesque Revival.
- * The Octagon House (253), 1856, is a two-story, frame house with board-and-batten siding, unembellished except for simple eaves brackets and porch rails.
- * Linkhart's Elevator is a large, irregular, frame building showing much evidence of additions, alterations, and neglect. Described as the oldest, frame building in the village (front section), it served as the first railroad station until 1874, has been used as residence, and it is purported that the first prepared breakfast cereal, Hominy Flakes, was produced here.
- * Deaton's Hardware (296), c. 1860, is a three-story, brick, commercial building. (see photograph #7)
- * Greywood Hall (311), built c. 1900, is a large, eclectic mansion, sparsely embellished by leaded glass windows. It has a steeply-pitched, metal, hip roof and two large, pedimented gables decorated with umbricated shingles. The wide veranda has fluted, square columns with a simple rail.

**United States Department of the Interior
Heritage Conservation and Recreation Service**

**National Register of Historic Places
Inventory—Nomination Form**

For HCRS use only

received DEC 8 1980

date entered APR 1 1982

Yellow Springs Historic District, Greene County, Ohio

Continuation sheet

Item number

7

Page

5

- * Roth Realty (292) is a tiny, frame, one-story commercial building fronted by a large, square, display window.
- * A portion of the Antioch Art Complex occupies a gambrel-roofed, glazed-tile, dairy barn which housed the Art Foundry in the 1920s.
- * The Antioch Science Building (191), 1928, is a massive, plain, four-story building with tall, window/spandrel bays divided by brick piers. Very large, bronze lanterns enhance the entrance, and a large, Art Deco chandelier hangs just within.
- * The Antioch Power Plant (9) is a complex of five structures, including two small, frame buildings; two insignificant utility structures; and the power plant itself, a large, brick structure (1929) with mission-tile roof and octagonal, brick smokestack, located in the abandoned lime quarry. The original boilers have been replaced, yet the plant still serves the college and has supplied power for the village.
- * Birch Hall (332), designed in 1945 by Finnish architect Eliel Saarinen, is a very long, modern, brick, two-story dormitory with metal-framed ribbon windows.

Type N:

Background structures which contribute to the district in scale and age, but have been severely altered.

Type O:

Intrusive structures of modern design.

DISTRICT BUILDING CLASSIFICATION

#	Type	Address	Name
1	K	111 West Center College Street	
2	O	115	
3	F	117	
4	A	107 Cliff Street	
5	E	127	
6	H	101 Corry Street	K & N Deli
7	G	302	
8	O		Community Nursery & Day Care Center
9	M		Antioch Power Plant
10	N/M	912-920	Antioch Area Theatre/Art Complex
11	N	109 East Davis Street	
12	E	112	
13	H	113	
14	N	117	
15	L	121	
16	L	125	
17	K	131	
18	N	135	
19	L	139	
20	A	115 West Davis Street	

**United States Department of the Interior
Heritage Conservation and Recreation Service**

**National Register of Historic Places
Inventory—Nomination Form**

Yellow Springs Historic District, Greene County, Ohio

Continuation sheet

Item number 7

Page 6

For HCRS use only

received DEC 8 1980

date entered APR 1 1982

#	Type	Address	Name
21	K	119 West Davis Street	
22	G	120-122	
23	A	128	
24	K	129	
25	K	131	
26	A	132	
27	K	137	
28	O	140	
29	N	150	
30	O	211	
31	O	223	
32	N	315	
33	K	Dayton Street	Bryan Community Center
34	M	102	Linkhart's Elevator
35	N	108	Periculum
36	O	110	DUD Welding and Towing
37	J	116	A-C Service
38	J	118	A-C Service
39	J	120	
40	J	122	
41	J	124	Bacon's Cleaners
42	J	126-128	Sally's Saloon
43	N	134	Bill's Auto Parts
44	O	136	Center Stage
45	O	142	Village Barber Shop/Beauty Shop
46	O		Highlander Center
47	B	204	Birch House
48	E	210	
49	A	213	
50	F	214	
51	H	215	
52	E	218	
53	F	221	
54	A	306	
55	A	310	
56	D	314	Municipal Building (Union School)
57	F/N	317-319	
58	G	321	
59	O	323	
60	A	327	
61	E	328	
62	N	330	
63	N	331	
64	L	338	
65	D	346	

United States Department of the Interior
Heritage Conservation and Recreation Service

National Register of Historic Places
Inventory—Nomination Form

Yellow Springs Historic District, Greene County, Ohio

Continuation sheet

Item number 7

Page 7

For HCERS use only

received DEC 8 1980

date entered APR 1 1982

#	Type	Address	Name
66	E	351 Dayton Street	
67	G	352	
68	G	358	
69	E	404	
70	E	412	
71	G	212 Elm Street	Little House
72	I	220	
73	H	311	
74	H	315	
75	O	316	
76	A	324	
77	H	330	
78	E	334	
79	L	338	
80	F	340	
81	F	344	(attached to 351 Dayton Street)
82	O	109 Glen Street	Ohio Bell
83	L	112	
84	L/O	115	
85	K	117	Axel Bahnsen's Studio
86	I	116-118	
87	N	116½-118½	
88	L	119	
89	I	120	
90	I	120½	
91	E	123	
92	E	127	
93	D	130	
94	E	131	
95	N	137	
96	N	140	
97	A	401 South High Street	
98	E	402	
99	A/L	408	
100	F	410	
101	O	411	Central Chapel A.M.E. Church
102	A/N	414	
103	N	500	
104	A	502	
105	O	503-505	
106	O	506	
107	A	507	
108	F	511	
109	N	512	
110	N	515	

United States Department of the Interior
Heritage Conservation and Recreation Service

National Register of Historic Places
Inventory—Nomination Form

Yellow Springs Historic District, Greene County, Ohio

Continuation sheet

Item number 7

Page 8

For HCRS use only

received

date entered APR 1 1982

#	Type	Address	Name
111	A	517 South High Street	
112	A	602	
113	F	608	Kirshner House
114	I	120 East Limestone Street	
115	F	124-126	
116	I	129	
117	I	130	
118	I	133	
119	I	136	
120	D	139	Howell House
121	H	140-142	
122	A	143	
123	A	149	
124	N	150	
125	I	152	
126	G	155	
127	O		Mills Hall, Antioch College
128	K	104 West Limestone Street	Drake House
129	K	120	Morgan House
130	A	130	
131	K	140	
132	K	148	
133	K	154	
134	O	225	
135	H	502 Livermore Street	
136	G	604	
137	G	610	
138	O	711	Corry Hall
139	M	785	North Hall
140	M	795	Main Building (Antioch Hall)
141	M	805	South Hall
142	O	815	McGregor Hall
143	H	108 East North College Street	
144	O	113	
145	K	114	West Hall, Antioch College
146	A/E	117	
147	D	127	Day House (Antioch College Infirmary)
148	O	219-225	Antioch Student Union/Antioch Inn
149	A	301	Horace Mann Building, Antioch College
150	G	321	
151	O	105 West North College Street	Humanist Center
152	K	106	Oster House
153	I	111	
154	F	114	
155	N	115	

} Antioch
College

United States Department of the Interior
Heritage Conservation and Recreation Service

National Register of Historic Places
Inventory—Nomination Form

Yellow Springs Historic District, Greene County, Ohio

Continuation sheet

Item number 7

Page 9

For HCRS use only

received DEC 8 1980

date entered APR 1 1982

#	Type	Address	Name
156	L	118 West North College Street	
157	E/N	119	
158	L	120	
159	O	124	
160	A	302 Phillips Street	St. Paul's Catholic Church
161	I	308	Rectory, St. Paul's Catholic Church
162	O	310	
163	F	314	
164	A	316	
165	O	318	
166	O	320	
167	O	322	
168	F	326	
169	K	330	
170	F	332	
171	A	336	
172	K	402	
173	A	405	
174	A	406	
175	E	412	
176	H	420	
177	K	425	
178	E	504	
179	E	506	
180	E	512	
181	N	403 President Street	
182	K	420	Gay Center (Alumni House)
183	H	501	Connor House
184	N	502	Norment House
185	K	511	Rockford Chapel
186	B	1050	Vernet House
187	G	120 Railroad Street	
188	C	150	
189	K	240 East South College Street	Curl Gymnasium
190	O	218-232	Olive Kettering Library
191	M	234-242	Science Building
192	O	R234-R242	Engineering Building
193	O	244-250	Art Building
194	E	108 North Stafford Street	
195	E	315 South Stafford Street	
196	E	319	
197	A	320	
198	N	323	
199	O	324	
200	O	326	

Antioch College

Antioch College

United States Department of the Interior
Heritage Conservation and Recreation Service

National Register of Historic Places
Inventory—Nomination Form

Yellow Springs Historic District, Greene County, Ohio

Continuation sheet

Item number 7

Page 10

For HCRS use only

received DEC 8 1980

date entered APR 1 1982

#	Type	Address	Name
201	N	329 South Stafford Street	
202	C	333	
203	N	339	
204	A	342	
205	E	343	
206	A	346	
207	H	401	
208	E	402-402½	
209	F	403	
210	E	406	
211	H	409	
212	N	410	
213	E	119 North Walnut Street	
214	E	123	
215	O	124	
216	G	126	
217	E	127	
218	A	130	
219	G	131	
220	B	132	
221	F/N	135	
222	N	138	
223	O	139	
224	F	141	
225	N	201-203	
226	F	202	
227	E	208	
228	F	209	
229	L	212	
230	F	215	
231	H	218-220	
232	F/N	106 South Walnut Street	
233	E	108	
234	L	111	
235	G	114	
236	G	117	
237	G	120	
238	K	123	
239	O	124	
240	C	128	
241	B	136	Cox House
242	B/E	139	Wolford Cottage
243	A	141-143	Wolford House
244	K	201	Board of Education (Old Public Library)
245	O	250	Mills Lawn School

United States Department of the Interior
Heritage Conservation and Recreation Service

National Register of Historic Places
Inventory—Nomination Form

Yellow Springs Historic District, Greene County, Ohio

Continuation sheet

Item number 7

Page 11

For HCRS use only

received DEC 8 1980

date entered APR 1 1982

#	Type	Address	Name
246	E/A	106 East Whiteman Street	Encounter Programs, Inc.
247	N/E	110	
248	K	113	
249	K	114	
250	K	204	
251	A	214	
252	N/K	215	
253	M	111 West Whiteman Street	Octagon House
254	K	112	
255	E	115	
256	C	116	
257	E	119	
258	K	123	
259	L	125	
260	I/L	130	
261	O	131	
262	E	133	
263	N	134	
264	N	205	
265	A	209	
266	K	309	
267	O	103-105 North Winter Street	
268	E	110	
269	D	111	Old Jail House
270	N	113	
271	C	114	
272	A	202 South Winter Street	United Methodist Church
273	O	205-207	
274	E	211	
275	A	212	
276	O	218-220	
277	B	220 Xenia Avenue	Cream-o-the-Crop/Glasstudio
278	O	224	King's Yard Goods
279	E	221	Earth Rose
280	N	225	Organic Grocery
281	G/M	230	Ye Olde Trail Tavern
282	B	227	Senior Citizen's Center
283	A	231	Molladoor/Emporium
284	A	230-232	Epic Bookstore/Winds Cafe
285	O	237	Village Variety Store
286	N	239	Records & Fresh Vegetables
287	O	242	Weaver's Super Valu
288	B	241-241A	Jeanie's Beauty Shop/Y.S. Bike Shop
289	O	243	Unfinished Creations
290	J	245	Ohio Silver

United States Department of the Interior
Heritage Conservation and Recreation Service

National Register of Historic Places
Inventory—Nomination Form

Yellow Springs Historic District, Greene County, Ohio

For HCRS use only

received DEC 8 1980

date entered APR 1 1982

Continuation sheet

Item number 7

Page 12

#	Type	Address	Name
291	J	247 Xenia Avenue	Little Art Theatre
292	M	249	Roth Realty
293	N	251	Dunphy Real Estate
294	G	252	old Comfort Inn
295	G	253	H.U.M.A.N./Yellow Springs News
296	M	254	Deaton's Hardware
297	O	255	Hasser's Barbershop
298	O	257	Ott's Shop
299	J	259	Dick's Coffee Shop
300	H	263-263½	Erbaugh & Johnson Drug Store/I.O.O.F.
301	O	301	Bonded Gas Station
302	N	302	Miami Deposit Bank
303	A	309	Oten Gallery
304	C	314	First Presbyterian Church
305	A	321	Barr House
306	L	322	Jackson-Lytle & Coffman Funeral Home
307	D	403	Offices of Mark Duckwall
308	O	415	Yellow Springs Library
309	L	416	
310	H	504	
311	M	503-507	Greywood
312	N	509	
313	G	512	
314	E	515	
315	A	604	First Baptist Church
316	A	607	
317	E	611	
318	G	612	
319	G	616	
320	N/E	619	
321	E	705	
322	N	709	
323	F	716	Odiorne Industrial Advertizing Agency
324	N	717	
325	O	777	
326	G	726	
327	F	801	
328	E	807	
329	O	825	
330	D	830	Fess House (Vie Design Studios)
331	A	833	Carr House
332	M	500-540 Corry Street	Birch Hall, Antioch College

8. Significance

Period	Areas of Significance—Check and justify below			
<input type="checkbox"/> prehistoric	<input type="checkbox"/> archeology-prehistoric	<input type="checkbox"/> community planning	<input type="checkbox"/> landscape architecture	<input type="checkbox"/> religion
<input type="checkbox"/> 1400-1499	<input type="checkbox"/> archeology-historic	<input type="checkbox"/> conservation	<input type="checkbox"/> law	<input type="checkbox"/> science
<input type="checkbox"/> 1500-1599	<input type="checkbox"/> agriculture	<input type="checkbox"/> economics	<input type="checkbox"/> literature	<input type="checkbox"/> sculpture
<input type="checkbox"/> 1600-1699	<input checked="" type="checkbox"/> architecture	<input checked="" type="checkbox"/> education	<input type="checkbox"/> military	<input checked="" type="checkbox"/> social/ humanitarian
<input type="checkbox"/> 1700-1799	<input type="checkbox"/> art	<input type="checkbox"/> engineering	<input type="checkbox"/> music	<input type="checkbox"/> theater
<input checked="" type="checkbox"/> 1800-1899	<input checked="" type="checkbox"/> commerce	<input type="checkbox"/> exploration/settlement	<input type="checkbox"/> philosophy	<input checked="" type="checkbox"/> transportation
<input type="checkbox"/> 1900-	<input type="checkbox"/> communications	<input type="checkbox"/> industry	<input type="checkbox"/> politics/government	<input checked="" type="checkbox"/> other (specify) <i>recreation</i>
		<input type="checkbox"/> invention		

Specific dates

Builder/Architect

Statement of Significance (in one paragraph)

Yellow Springs exhibits fine examples of vernacular residential architecture dating from the mid-19th and early 20th centuries. Early development of the village was slow and dependent upon the yellowish mineral springs renowned throughout the state for their medicinal qualities. During this early period the tiny settlement also served as a stage stop along the road between Cincinnati and Columbus. Following the arrival of the railroad, the village assumed importance as a local commercial and transportation center, marking the beginning of an exuberant era of prosperity and growth. This period was highlighted by the founding of Antioch College, always closely associated with the life of the village community. Yellow Springs retains original scale and much of its mid-19th century integrity and ambiance within the district, despite its steady growth in recent years.

The romantic appeal of the forested landscape and the fresh, cold water from the mineral-stained spring drew Lewis Davis, the first white settler, to the Yellow Spring in 1802. Here he constructed a tavern on the east side of Yellow Springs Creek and advertized the quality of the water. By 1805 shower baths were available to travellers who had heard of the spring, and as word spread, visitors came in larger numbers and from greater distances. In 1827 Elisha Mills brought his family to the area and purchased the springs making substantial improvements in the site. The "watering place", as he advertized it, catered predominantly to wealthy families from Cincinnati and further, as well as to prominent travelling politicians, writers, and speakers. William Neff of Cincinnati purchased the Mills mansion and the several cottages at the spring along with 200 acres of land in 1842. Mills, however, drew much of his clientele to his new Yellow Springs House, which served as a way-station on the stagecoach line and rivaled the hotel at the spring.

In 1848 Dr. Abner Cheney of Cincinnati opened the Water Cure Sanitarium in the Glen (Glen Helen) south of the Neff House. Doubling as both a resort and medical institution, the Water Cure received widespread notoriety under new management as the Memnonia Institute. Designed as a community of spiritual and physical harmony, Horace Mann sternly denounced it as a "free-love" institution. The hotels rode the wave of the prosperous water cure fad well into the 1850s. Although business was often sporadic during the early 1860s, it increased again following the Civil War with William C. Neff replacing the old Neff House with a 300-room hotel in 1870. By the 1890s the fad had dissipated and today evidence of the health resorts has all but vanished.

The site of the springs was also selected very early by a short-lived Owenite community founded by Cincinnati leaders of the Owenite Society shortly after Robert Owen's much-publicized visit to Cincinnati in 1825. Although the colony numbered over 100 at one point, internal dissension and instability forced complete abandonment of the experiment in 1827. Nothing remains of the large log building, originally located on Birch Creek in the Glen.

9. Major Bibliographical References

Broadstone, M. A., ed. History of Greene County, Ohio: Its People, Industries, and Institutions. (Indianapolis: B. F. Bowin & Co., Inc., 1918. Vol. I, pp. 376-386.

Dills, R. S. History of Greene County. (Dayton, Ohio: Odell & Mayer, 1881). pp. 661-700.

10. Geographical Data

ACREAGE NOT VERIFIED

Acreeage of nominated property 460.5

Quadrangle name Yellow Springs

UTM NOT VERIFIED

Quadrangle scale 1:24,000

UMT References

A

1	7	2	5	2	9	4	0	4	4	1	0	4	0	0
Zone			Easting				Northing							

B

1	7	2	5	3	1	2	5	4	4	0	8	9	3	0
Zone			Easting				Northing							

C

1	7	2	5	2	4	0	0	4	4	0	8	9	9	0
Zone			Easting				Northing							

D

1	7	2	5	2	0	1	0	4	4	0	9	9	5	0
Zone			Easting				Northing							

E

1	7	2	5	2	0	3	0	4	4	0	9	8	3	0
Zone			Easting				Northing							

F

1	7	2	5	2	1	9	0	4	4	1	0	1	1	0
Zone			Easting				Northing							

G

1	7	2	5	2	5	6	0	4	4	1	0	4	1	0
Zone			Easting				Northing							

H

Zone			Easting				Northing							

Verbal boundary description and justification

The boundary of the Yellow Springs Historic District is shown as the red line on the accompanying base map showing lot lines and entitled, "Yellow Springs, Ohio."

List all states and counties for properties overlapping state or county boundaries

state	code	county	code

11. Form Prepared By

name/title Timothy J. King

organization Antioch College date May 19, 1980

street & number telephone (513) 767-7331

city or town Yellow Springs state Ohio

12. State Historic Preservation Officer Certification

The evaluated significance of this property within the state is:

national state local

As the designated State Historic Preservation Officer for the National Historic Preservation Act of 1966 (Public Law 89-665), I hereby nominate this property for inclusion in the National Register and certify that it has been evaluated according to the criteria and procedures set forth by the Heritage Conservation and Recreation Service.

State Historic Preservation Officer signature

William H. Harlan
SHPO

date 11/4/80

title

For HCRS use only

I hereby certify that this property is included in the National Register

Entered in the
National Register

date 4/1/82

Delores Byer
Keeper of the National Register

Attest:

date

Chief of Registration

**United States Department of the Interior
Heritage Conservation and Recreation Service**

**National Register of Historic Places
Inventory—Nomination Form**

Yellow Springs Historic District, Greene County, Ohio

For HCERS use only

received DEC 8 1980

date entered APR 1 1982

Continuation sheet

Item number 8

Page 2

Yellow Springs has relied heavily upon its location along important overland transportation routes. Several years after its initial settlement, the village became a post-town on a star (rapid) mail route. The stage road between Cincinnati and Columbus then ran northward along the east bank of the Yellow Springs Creek, and by 1838 the National Road had been completed to Springfield, ten miles to the north. Other major roads were planned and improved by private turnpike companies during the second quarter of the century and tolls were collected at intervals along each route. By 1852 roads connected all of the surrounding towns, including Dayton, Fairfield, Springfield, Clifton, and Xenia providing access to commercial activity in Yellow Springs.

In 1845 funds were exhausted for completion of the final stretch of the Little Miami Railroad between Xenia and Springfield. As one of the first railroads to be chartered west of the Alleghenies, the L.M.R.R. was to connect with the southern terminus of the Mad River and Lake Erie in Springfield, thereby linking the Ohio River at Cincinnati with Sandusky on Lake Erie and opening trade routes to the eastern markets. William Mills, son of Elisha, and an early local entrepreneur, had a vested interest in the completion of the railroad which inspired him to prepare a proposal designed to attract the eastern capital necessary to complete the road. The required loans were successfully negotiated, paving the way for completion of the railroad through Yellow Springs in 1846, rather than through Clifton as originally planned. Known as the "model road", the Little Miami permitted freight and passenger service to points in every direction, essential to the village's ensuing commercial vitality. Several railroad-oriented structures are included in the district, although today the railroad exists only as a rarely used spur.

In 1902 the interurban traction (trolley) system was built through Yellow Springs running along Xenia Avenue, carrying passengers between Springfield and Xenia and beyond. Competition from the increasingly popular automobile, however, forced the discontinuation of the line in 1934.

Yellow Springs owes much of its present appearance and layout to the speculative interests of William Mills, considered the founder of the village. He owned over 200 acres, comprising much of present-day Yellow Springs; constructed his mansion on a central, 20-acre square (Mills Lawn); improved the streets and platted the village in 1853 upon a typical, western grid system composed of wide streets and 436 lots. Incorporation followed three years later. Responsible for several of the earliest building and business enterprises west of the railroad, Mills optimistically pursued his vision of a bustling city of 10,000 inhabitants. His personal contribution of \$20,000, 20 acres of land and pledges totalling \$10,000 were instrumental factors determining the location of Antioch College. Most of the structures Mills built have disappeared; yet, having lured the railroad and then the college, he guided the transformation of the village from a little hamlet of 100-odd residents in 1846 to a thriving town of over 1000 in 1853. Unfortunately, the Panic of 1857 and the outbreak of war hampered further economic development and the village was never to regain the momentum it had lost.

Although lack of early power sources prevented development of the village to an important industrial center, it did conduct a lively commercial business as a transshipment

**United States Department of the Interior
Heritage Conservation and Recreation Service**

**National Register of Historic Places
Inventory—Nomination Form**

Yellow Springs Historic District, Greene County, Ohio

Continuation sheet

Item number

8

Page

3

For HCERS use only

received DEC 8 1980

date entered APR 1 1982

point for the millers in Clifton and along the Little Miami River, and as a market center for local farmers. Col. Joseph E. Wilson opened a lime-burning operation on Corry Street in 1848, which remained the most important industry for forty years. The lime, quarried within several yards of the railroad and fired on the same site in kilns burning wood cut in the nearby Glen, was superior to other limes on the local market and was shipped as far as Cincinnati. Local business has also included a brick-making operation (1848); a flour mill (1852); grain elevators (1847, 1894); a short-lived foundry and machine shop erected by Mills (1855); and the Carr greenhouses (1870), pioneers in propagating evergreens and fruit trees. Within the district only the lime quarry and Linkhart's Elevator, former mill, residence, and the first railroad station, remain as evidence of these early commercial and industrial enterprises.

Antioch College was conceived in Marion, N. Y. by the Christian Church, who wished to establish a high-ranking college that could furnish liberal instruction at a modest cost. Founded in 1850, actual construction did not begin until 1852, followed by opening ceremonies in 1853. Besides being one of the first coeducational schools in the country, Antioch was also one of the first non-sectarian schools, despite struggles between its Christian and Unitarian founders to make it denominational. Attracted by the innovative features of the new college, noted educational reformist, Horace Mann, accepted their offer as first president of Antioch. Mann had succeeded John Q. Adams as U.S. Representative from Massachusetts in 1848, and was the Free Soil Party candidate for governor of Massachusetts prior to his arrival in Yellow Springs. The college is also noted for its early employment of female faculty members, abolition of color distinction in its admission policy, and the offering of courses in teaching and agriculture. Simeon Fess, Ohio Senator and Republican National Committee Chairman, served as president from 1907-1917; and Arthur E. Morgan, international authority on water conservation, pioneered the well-known work/study program at Antioch, combining theory with practice, during his term as president (1920-1933). Architecturally, the campus contains significant 19th-century buildings, including the original Main, North and South Halls (presently on the National Register), as well as several important 20th-century structures. Economically and geographically, the college has always maintained a symbiotic relationship with the village.

A variety of architectural styles have influenced building design in Yellow Springs, but the most significant examples date from the peak period, 1846-56, and exhibit similar Greek Revival characteristics. Typically, these dwellings, churches and schools were frame or often brick, supplied by John Hamilton, the local brick manufacturer. Major contemporary exceptions to this rule of style include Main Building on the Antioch campus (1853), the Octagon House (1856), and several Late Federal-style buildings. A number of well-preserved buildings of exceptional architectural significance can be seen in the district that date after the expansion period, specifically Italianates and Colonial Revivals.

United States Department of the Interior
Heritage Conservation and Recreation Service

National Register of Historic Places
Inventory—Nomination Form

Yellow Springs Historic District, Greene County, Ohio

For HCRS use only

received DEC 8 1980

date entered APR 1 1982

Continuation sheet

Item number 9

Page 2

Hill, Jane. William Mills, The Yellow Springs Man: A Biography of a Frontier Entrepreneur.
Unpublished Masters Thesis, Wright State University, 1974.

Samoff, Joel. Yellow Springs, Ohio: 1846-1864. Unpublished History Thesis, Antioch
College, 1965.

Yellow Springs Community Council. Why They Came. Yellow Springs Community Council, 1956.

NATIONAL REGISTER OF HISTORIC PLACES

United States Department of the Interior
National Park Service

EVALUATION / RETURN SHEET

Property: Yellow Springs Historic District
 State, County: OH / Greene
 Federal Agency: _____

Working No. 12,8.80.2955
 Fed. Reg. Date: 2.1.83
 Date Due: 4-1-82 / 4-17-82

Action: ACCEPT 4/1/82
 RETURN _____
 REJECT _____

- resubmission
- nomination by person or local government
- owner objection
- appeal

photos 25
 maps 42

Substantive Review: sample request appeal NR decision

Reviewer's comments:

Recom./Criteria _____
 Reviewer _____
 Discipline _____
 Date _____
 see continuation sheet

Nomination returned for: technical corrections cited below
 substantive reasons discussed below

1. Name

2. Location

3. Classification

Category	Ownership	Status	Present Use
	<input checked="" type="checkbox"/> Public Acquisition	<input type="checkbox"/> Accessible	

4. Owner of Property

5. Location of Legal Description

6. Representation in Existing Surveys

Has this property been determined eligible? yes no

7. Description

Condition		Check one	Check one
<input type="checkbox"/> excellent	<input type="checkbox"/> deteriorated	<input type="checkbox"/> unaltered	<input type="checkbox"/> original site
<input type="checkbox"/> good	<input type="checkbox"/> ruins	<input type="checkbox"/> altered	<input type="checkbox"/> moved date _____
<input type="checkbox"/> fair	<input type="checkbox"/> unexposed		

Describe the present and original (if known) physical appearance

- summary paragraph
- completeness
- clarity
- alterations/integrity
- dates
- boundary selection

for NPS use only

8. Significance

Period _____ Area of Significance—Check and justify below

Specific dates _____ Builder/Architect _____

Statement of Significance (in one paragraph)

- _____ summary paragraph
- _____ completeness
- _____ clarity
- _____ applicable criteria
- _____ justification of areas checked
- _____ relating significance to the resource
- _____ context
- _____ relationship of integrity to significance
- _____ justification of exception
- _____ other

9. Major Bibliographical References

10. Geographical Data

Acres of nominated property _____

Quadrangle name _____

USIT References _____

Verbal boundary description and justification _____

11. Form Prepared By

12. State Historic Preservation Officer Certification

The evaluated significance of this property within the state is:

_____ national _____ state _____ local

State Historic Preservation Officer signature _____

title _____ date _____

13. Other

- _____ Maps
- _____ Photographs
- _____ Other

Questions concerning this nomination may be directed to _____

Signed _____ Date _____ Phone: 202 272-3504

Comments for any item may be continued on an attached sheet



RAILROAD CROSSING

SPEED
LIMIT
25

Linkhart's Elevator (34) View looking
120 Railroad Street (187) northwest
Yellow Springs Historic District
Yellow Springs, Ohio
Tim King, 1980
Municipal Offices, Yellow Springs

Greene Co.

DEC 8 1980

#1
125



A-C SERVICE
WEATING PLUMBING & KITCHENS

WALTON
WEAVERS

Walter E. ...

100 block, Dayton Street (R-L, 37-46)

View looking west

Yellow Springs Historic District

Yellow Springs, Ohio DEC 8 1980

Tim King, 1980

Municipal Offices, Yellow Springs

Greene Co.
#2/25



126, 130, 132 North Walnut St. (216, 218,
220); View looking northwest
Yellow Springs Historic District
Yellow Springs, Ohio
Tim King, 1980
Municipal Offices, Yellow Springs

DEC 8 1980

Greene Co.

#3/25



218, 210 Dayton Street, Birch House
(52, 48, 47); View looking northeast
Yellow Springs Historic District *Greene Co.*
Yellow Springs, Ohio **DEC 8 1980**
Tim King, 1980
Municipal Offices, Yellow Springs

#4/25



Municipal Offices Building (56)
View looking north
Yellow Springs Historic District
Yellow Springs, Ohio
Tim King, 1980
Municipal Offices, Yellow Springs

Greene CO.

DEC 8 1980

#5/25



Trail Tavern

THE
LITTLE
COTTAGE

Epic Bookstore/The Winds Cafe (284), Trail
Tavern (281); View looking north
Yellow Springs Historic District
Yellow Springs, Ohio
Tim King, 1980
Municipal Offices, Yellow Springs

Greene Co.
DEC 8 1980

#6/25



CHIMNEY

Window

Window

Window

Window

Window

Window

Window

Window

Window

Window

Window

Window

Window

Window

Adjacent building windows

Door

DEATON HARDWARE

DEATON'S

HOUSEWARES

DEATON'S

HARDWARE

STOP FOR PEDESTRIAN IN CROSSWALK

88¢

White car

Street lamp

Deaton's Hardware (296), 252 Xenia Av (294)
View looking north
Yellow Springs Historic District
Yellow Springs, Ohio
Tim King, 1980
Municipal Offices, Yellow Springs

Greene Co.
DEC 8 1980

#7
/25



OHIO SILVER CO

**SONG OF THE CANARY
BABIES & BANNERS
BOTH 7:00 & 9:00**

Little Theatre

ROTH REALTY INC.

Coca-Cola
COFFEE SHOP
REAL OHIO RUGS
BREAKFAST

STOP
FOR
PEDESTRIAN
IN
CROSSWALK

Xenia Av., Ohio Silver to Erbaugh & Johnson
Drug Store (290-293, 296-300)

View looking south

Yellow Springs Historic District

Yellow Springs, Ohio

Tim King, 1980

Municipal Offices, Yellow Springs

Greene Co.
DEC 8 1980

#8/25



W. WHITEMAN ST.

XENIA AV.

STOP

607, 611, 619 Xenia Av. (316, 317, 319)

View looking south

Yellow Springs Historic District

Yellow Springs, Ohio

Tim King, 1980

Municipal Offices, Yellow Springs

DEC 8 1980

#9/
25



1871-1872

First Baptist Church (315); View looking
northwest towards houses on W. Whiteman
Street (255, 257)

Greene Co.
Yellow Springs Historic District
Yellow Springs, Ohio

Tim King, 1980

Municipal Offices, Yellow Springs

DEC 8 1980

#10/25



Octagon House (253) *Greene Co.*
View looking north
Yellow Springs Historic District
Yellow Springs, Ohio
Tim King, 1980
Municipal Offices, Yellow Springs

DEC 8 1980

#11

125



Fess House (Vie Design Studios) (330)
View looking southwest
Yellow Springs Historic District
Yellow Springs, Ohio
Tim King, 1980
Municipal Offices, Yellow Springs

Greene Co.

DEC 8 1980

#12
/25



833 Xenia Avenue (331)
View looking northwest
Yellow Springs Historic District
Yellow Springs, Ohio
Tim King, 1980
Municipal Offices, Yellow Springs

DEC 8 1980

Greene Co.

#13/25



604, 610 Livermore Street (136, 137)

View looking northwest

Yellow Springs Historic District

Yellow Springs, Ohio

Tim King, 1980

Municipal Offices, Yellow Springs

DEC 8 1980

#14/25



Howell House (120)
View looking northeast
Yellow Springs Historic District
Yellow Springs, Ohio
Tim King, 1980
Municipal Offices, Yellow Springs

DEC 8 1980

Greene Co.

#15/25



131 Glen Street (94)
Streetscape looking northwest
Yellow Springs Historic District
Yellow Springs, Ohio
Tim King, March 1980
Municipal Offices, Yellow Springs

DEC 8 1980

Greene Co.

#16/25



Little House, Cox House, Wolford Cottage
(71, 241, 242); View looking east
Yellow Springs Historic District
Yellow Springs, Ohio
Tim King, March 1980
Municipal Offices, Yellow Springs

Greene CO. DEC 8 1980

#17/25



United Methodist Church and parsonage,
foreground (272, 275)

DEC 8 1980

View looking north

Yellow Springs Historic District

Yellow Springs, Ohio

Greene Co.

Tim King, May 1980

Municipal Offices, Yellow Springs

#18/25



Phillips Street from Mills Lawn, St. Paul's
Catholic Church (164-160) *Greene Co.*
View looking northwest
Yellow Springs Historic District
Yellow Springs, Ohio
Tim King, March 1980
Municipal Offices, Yellow Springs

DEC 8 1980

#19/25



336

PHILLIPST

336, 332 Phillips Street (171, 170)
View looking northwest
Yellow Springs Historic District
Yellow Springs, Ohio
Tim King, March 1980
Municipal Offices, Yellow Springs

DEC 8 1980

Greene Co.

#20

/25



500 block of Phillips Street (180, 179, 178)
View looking north
Yellow Springs Historic District
Yellow Springs, Ohio
Tim King, March 1980
Municipal Offices, Yellow Springs

DEC 8 1980

Greene Co.

#21/25



128 West Davis Street (23) *Greene Co.*
View looking west
Yellow Springs Historic District
Yellow Springs, Ohio
Tim King, March 1980
Municipal Offices, Yellow Springs

DEC 8 1980

#22/25



406, 402, 346, 342 South Stafford Street
(210, 208, 206, 205); View looking north
Yellow Springs Historic District
Yellow Springs, Ohio
Tim King, March 1980
Municipal Offices, Yellow Springs

DEC 8 1980

Greene Co.

#23/25



414, 410, 408 South High Street (102, 100,
99); View looking northwest

Yellow Springs Historic District

Yellow Springs, Ohio

Tim King, May 1980

Municipal Offices, Yellow Springs

DEC 8 1980

Greene Co.

#24/25



Main Building, Antioch College (140)

View looking west *Greene Co.* DEC 8 1980

Yellow Springs Historic District

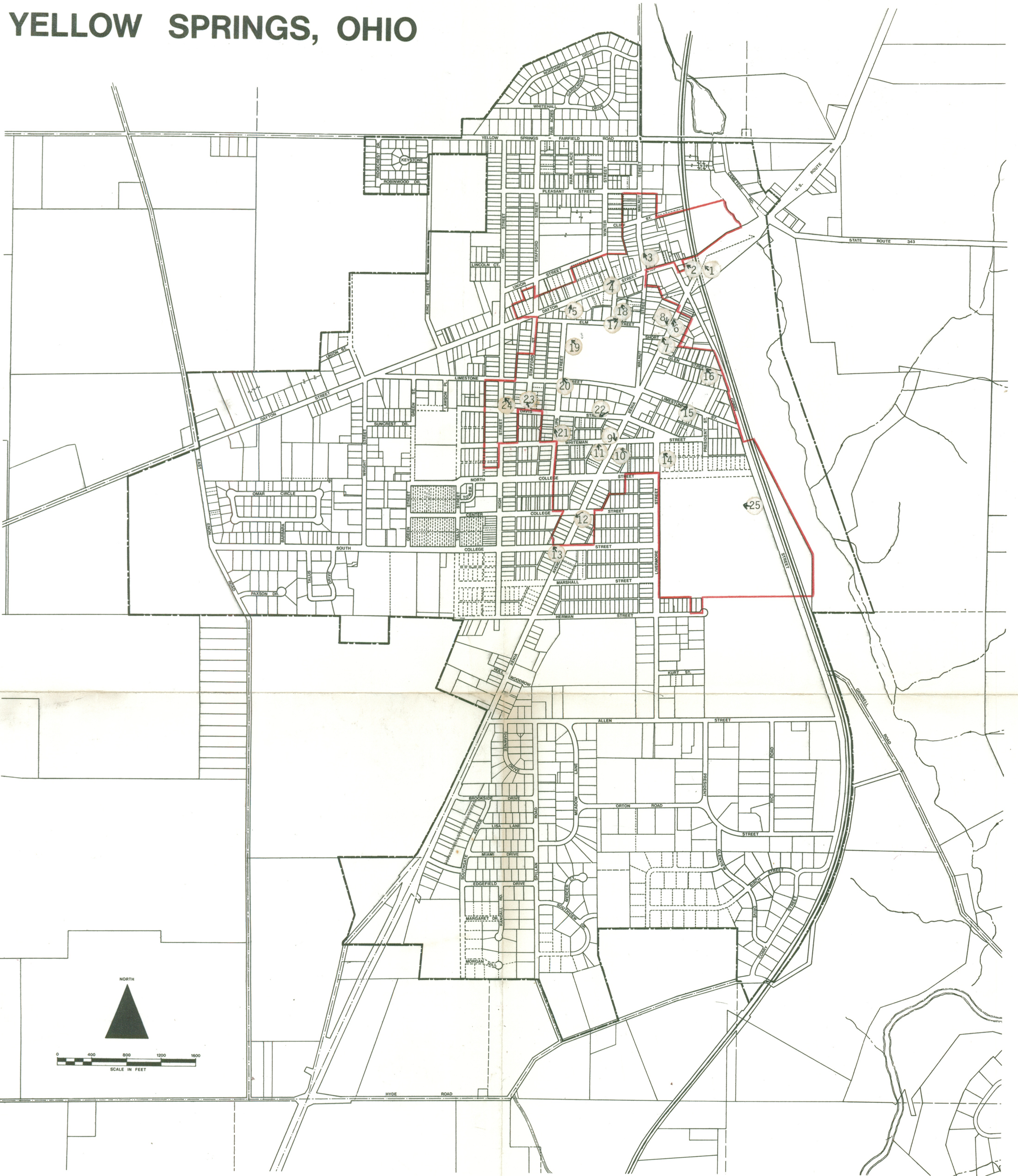
Yellow Springs, Ohio

Tim King, March 1980

Municipal Offices, Yellow Springs

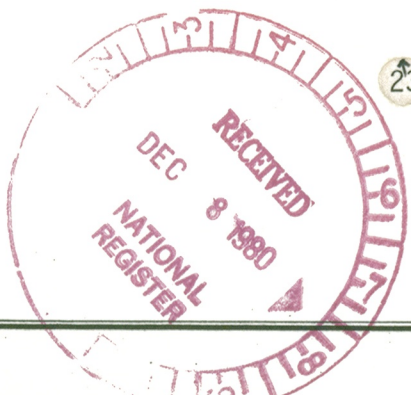
#25
1/25

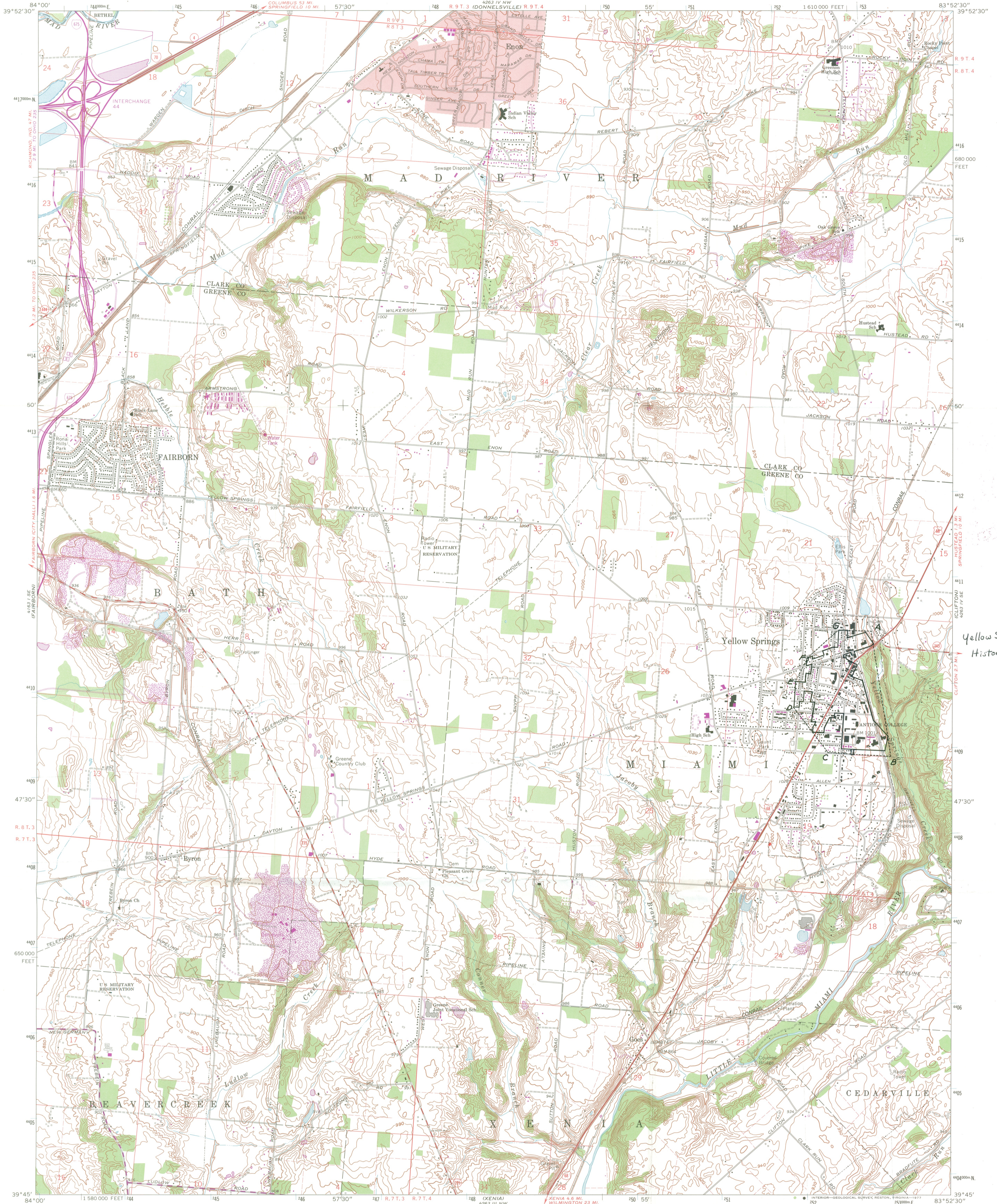
YELLOW SPRINGS, OHIO



— DISTRICT BOUNDARY

23 PHOTO VIEWPOINT





Yellow Springs
Historic District

Mapped, edited, and published by the Geological Survey in cooperation with the Army Map Service. Revised in cooperation with State of Ohio agencies. Control by USGS and USC&GS.

Topography by photogrammetric methods from aerial photographs taken 1954. Field checked 1955. Revised from aerial photographs taken 1968. Field checked 1968.

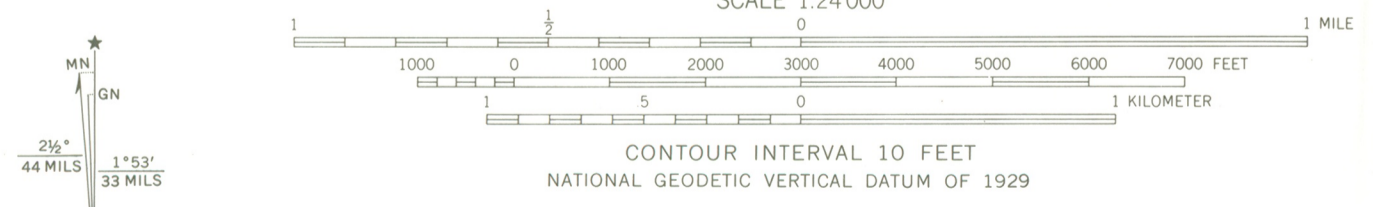
Polyconic projection. 1927 North American datum. 10,000-foot grid based on Ohio coordinate system, south zone 1000-meter Universal Transverse Mercator grid ticks, zone 17, shown in blue.

Fine red dashed lines indicate selected fence and field lines where generally visible on aerial photographs. This information is uncheckered.

Red tint indicates area in which only landmark buildings are shown.

Areas covered by light-blue dashed pattern are subject to controlled inundation to 835 feet by Huffman Dam.

Area east of the Little Miami River lies within the Virginia Military District. Area west of the Little Miami River lies within the Between the Miamis. Land lines based on the Great Miami River Base



ROAD CLASSIFICATION

Primary highway, all weather, hard surface. Light-duty road, all weather, improved surface.

Secondary highway, all weather, hard surface. Unimproved road, fair or dry weather.

Interstate Route U.S. Route State Route

THIS MAP COMPLIES WITH NATIONAL MAP ACCURACY STANDARDS FOR SALE BY U.S. GEOLOGICAL SURVEY, RESTON, VIRGINIA 22092. A FOLDER DESCRIBING TOPOGRAPHIC MAPS AND SYMBOLS IS AVAILABLE ON REQUEST.

Revisions shown in purple compiled in cooperation with State of Ohio agencies from aerial photographs taken 1975. This information not field checked.

YELLOW SPRINGS, OHIO

N3945-W8352.5/7.5

1968
PHOTOREVISED 1975
AMS 4263 IV SW-SERIES V852

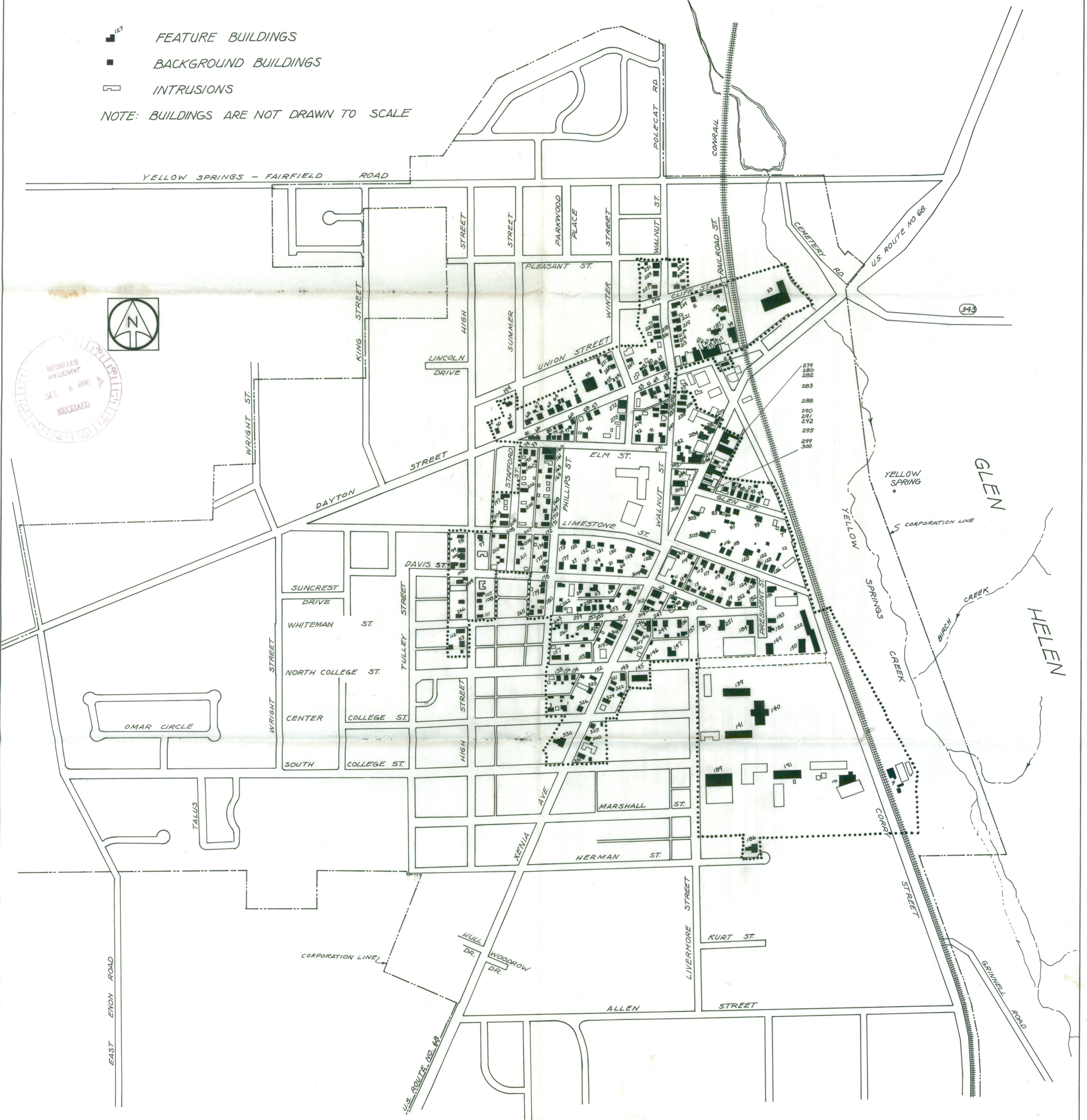


YELLOW SPRINGS HISTORIC DISTRICT

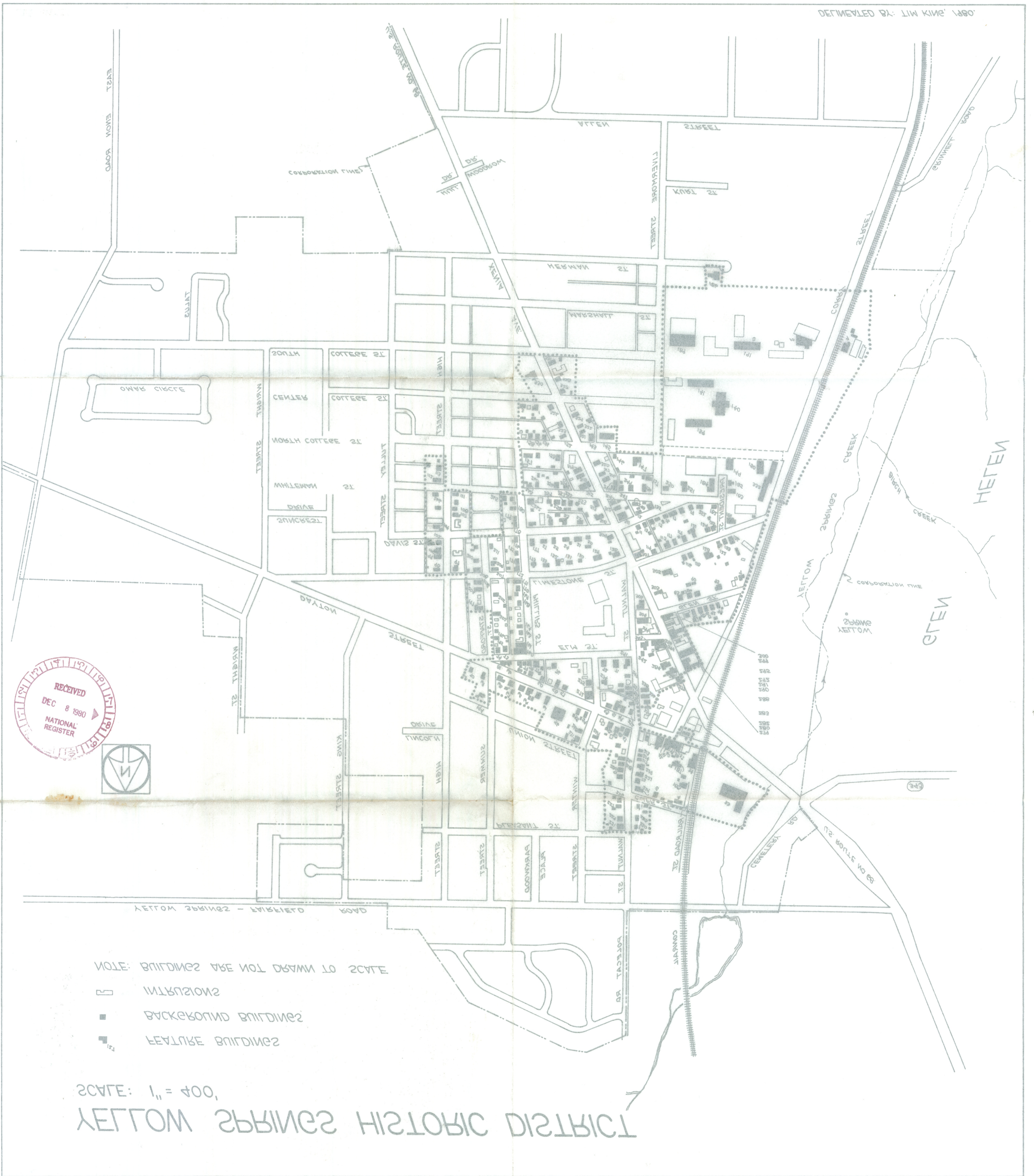
SCALE: 1" = 400'

- FEATURE BUILDINGS
- BACKGROUND BUILDINGS
- INTRUSIONS

NOTE: BUILDINGS ARE NOT DRAWN TO SCALE



DELINEATED BY: TIM KING, 1980.



RECEIVED
 DEC 8 1990
 NATIONAL REGISTER



- NOTE: BUILDINGS ARE NOT DRAWN TO SCALE
 OF MAP FOR POSITION
- ▭ INTRUSIONS
 - BACKDROP BUILDINGS
 - FEATURE BUILDINGS

SCALE: 1" = 400'

YELLOW SPRINGS HISTORIC DISTRICT

Ohio Historic Preservation Office

Ohio Historical Center I-71 & 17th Avenue Columbus, Ohio 43211 (614) 466-1500

February 18, 1982

Ms. Carol Shull
Acting Keeper
National Register of
Historic Places
Department of the Interior
440 G Street, N.W.
Washington, D.C. 20240

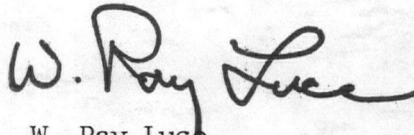
Dear Ms. Shull:

Enclosed are two resubmissions for the National Register. Both were returned for the renotification necessitated by the 1980 Amendments. In both cases this has been done through a public notice in a local newspaper.

<u>Name</u>	<u>County</u>
Yellow Springs Historic District	Greene
Huffman Historic District	Montgomery

Please let me know if we can answer any questions.

Sincerely,



W. Ray Luce
State Historic Preservation Officer

WRL/DAS:vb

Enclosures



ENTRIES IN THE NATIONAL REGISTER OF HISTORIC PLACES

STATE OHIO

Date Entered APRIL 1, 1982

<u>Name</u>	<u>Location</u>
Green Plain Monthly Meetinghouse	South Charleston vicinity Clark County
<u>Yellow Springs Historic District</u>	Yellow Springs Greene County
Bramble, Ayres L., House	Cincinnati Hamilton County
Shield's, Edwin M., House (William Johnston House)	Loveland Hamilton County
St. Rosa Church	Cincinnati Hamilton County

Notified

Honorable Howard M. Metzenbaum
Honorable John Glenn
Honorable Willis D. Gradison, Jr.
Honorable Clarence Brown

Midwest Regional Office, NPS

State Historic Preservation Officer
Dr. W. Ray Luce
The Ohio Historical Society
Interstate 71 at 17th Avenue
Columbus, Ohio 43211