

UNITED STATES DEPARTMENT OF THE INTERIOR  
NATIONAL PARK SERVICE  
NATIONAL REGISTER OF HISTORIC PLACES  
REGISTRATION FORM

OMB NO. 1024-0018, NPS FORM  
RECEIVED 2280  
129  
JAN 23 1998  
NAT. REGISTER OF HISTORIC PLACES  
NATIONAL PARK SERVICE

This form is for use in nominating or requesting determinations for individual properties or districts. See instructions in How to Complete the National Register of Historic Places Registration Form (National Register Bulletin 38) for each item by marking "x" in the appropriate box or by entering information requested. If an item does not apply to the property being documented, enter "N/A" for "not applicable." For functions, architectural classifications, materials, and areas of significance, enter only categories and subcategories from the instructions. Place additional entries and narrative items on continuation sheets (NPS Form 10-900a). Use a typewriter, word processor, or computer, to complete all items.

**1. Name of Property**

historic name Johnstown Colonial Cemetery

other names/site number \_\_\_\_\_

**2. Location**

Street & number West Green and North Market Streets [N/A] not for publication

city, town Johnstown [N/A] vicinity

state New York code NY county Fulton code 035 zip code 12095

**3. State/Federal Agency Certification**

As the designated authority under the National Historic Preservation Act of 1966, as amended, I hereby certify that this  nomination  request for determination of eligibility meets the documentation standards for registering properties in the National Register of Historic Places and meets the procedural and professional requirements set forth in 36 CFR Part 60. In my opinion, the property  meets  does not meet the National Register criteria. I recommend that this property be considered significant  nationally  statewide  locally. ([ ] See continuation sheet for additional comments.)

J. W. Aldrich  
Deputy Commissioner for Historic Preservation  
Signature of certifying official

15 Dec. '97  
Date

State or Federal agency and bureau

In my opinion, the property  meets  does not meet the National Register criteria. ([ ] See continuation sheet for additional comments.)

N/A  
Signature of commenting or other official

Date

N/A  
State or federal agency and bureau

**4. National Park Service Certification**

I hereby certify that this property is:  
 entered in the National Register.  
 See continuation sheet.  
 determined eligible for the National Register. [ ] see continuation sheet.  
 determined not eligible for the National Register.  
 removed from the National Register.  
 other, (explain:)

Signature of keeper Robert S. Savage Date of Action 3/9/98

**5. Classification**

**Ownership of Property**  
(Check as many boxes as apply)

**Category of Property**  
(check only one box)

**Number of Resources within Property**  
(do not include previously listed resources in the count)

- private
- public-local
- public-State
- public-Federal

- building(s)
- district
- site
- structure
- object

Contributing	Noncontributing	
		buildings
1	(cemetery)	sites
2	(arch; stone wall)	structures
		objects
3		Total

**Name of related multiple property listings** (enter "N/A" if property is not part of a multiple property listing)

**Number of contributing resources previously listed in the National Register**

N/A

N/A

**6. Function or Use**

**Historic Function**  
(enter categories from instructions)

**Current Functions**  
(enter categories from instructions)

FUNERARY/Cemetery

FUNERARY/Cemetery

**7. Description**

**Architectural Classification**  
(enter categories from instructions)

**Materials**  
(enter categories from instructions)

NO STYLE

foundation N/A

walls Stone

roof N/A

other N/A

**Narrative Description**

(describe the historic and current condition of the property on one or more continuation sheets.)

United States Department of the Interior  
National Park Service

NATIONAL REGISTER OF HISTORIC PLACES  
CONTINUATION SHEET

Johnstown Colonial Cemetery  
Johnstown, Fulton Co. NY

Section number 7 Page 1

---

### Description

The Johnstown Colonial Cemetery is located at the north center of the City of Johnstown. Occupying a rectangular plot of 1.1 acres at the northwest corner of West Green and North Market Streets, the cemetery is sited on level, high ground, along the northern edge of a ridge running east and west. Several large shade trees stand within the cemetery proper. The current surroundings generally consist of modified residential and industrial buildings erected on surrounding streets between the mid-nineteenth and early twentieth centuries.

The cemetery parcel is enclosed on the north, south and east sides by a masonry wall of cut limestone and fieldstone, mortared and surmounted by a wide, flat coping of cut limestone slabs. Several failed and collapsed sections of stone wall were repaired and the stones re-set in 1996. The principal entrance to the cemetery is a double-leaf gate located near the mid-point of the south (West Green Street) wall. The gate consists of flanking, cut stone posts with limestone slab caps supporting a decorative wrought iron memorial arch bearing the emblem of the Daughters of the American Revolution dedicated in 1914. Originally, a stile consisting of projecting stone steps set in the southeast corner of the wall provided a secondary pedestrian entrance to the cemetery. Remnants of this stile were eliminated when the stone wall was stabilized at an undetermined date.

Extant evidence of the historic burial plan reflects a linear arrangement of grave markers since the late eighteenth century, the rows aligned north-south, with headstones facing east-west. The earliest burials in the cemetery are no longer denoted by extant markers. Through vandalism and lack of maintenance over time, many stones were damaged, toppled, or removed from their original locations. Preservation efforts during the twentieth century have re-set the markers in the historic linear pattern, though the precise locations of some burials commemorated by the stones are no longer discernible.

Approximately 150 grave markers remain within the cemetery enclosure; these generally date from the late eighteenth to the late nineteenth century. Most of the headstones are limestone or marble slabs; carving reflects the conventional range of forms, script and funerary motifs employed during the period of significance. The earliest extant stones exhibit the highest degree of vernacular carved embellishment, notably the urn, willow, entwined vine and swagged drapery mourning symbols popular during the first decades of the nineteenth century. By contrast, the mid-to late nineteenth century markers are relatively plain, the majority bearing simple inscriptions containing only the names and dates of the deceased.

**8. Statement of Significance**

**Applicable National Register Criteria**

(Mark an "x" in one or more boxes for the criteria qualifying the property for National Register listing.)

- A** Property is associated with events that have made a significant contribution to the broad patterns of our history.
- B** Property is associated with the lives of persons significant in our past.
- C** Property that embodies the distinctive characteristics of a type, period, or method of construction or represents the work of a master, or possesses high artistic values, or represents a significant and distinguishable entity whose components lack individual distinction.
- D** Property has yielded, or is likely to yield, information important in pre-history or history.

**Criteria Considerations**

(Mark "X" in all the boxes that apply.)

- A** owned by a religious institution or used for religious purposes.
- B** removed from its original location.
- C** a birthplace or grave.
- D** a cemetery.
- E** a reconstructed building, object or structure.
- F** a commemorative property.
- G** less than 50 years of age or achieved significance within the past 50 years.

**Areas of Significance**

(Enter categories from instructions.)

SETTLEMENT

FUNERARY ART

**Period of Significance**

ca. 1766-1914

**Significant Dates**

1766; 1914

**Significant Person**

(Complete if Criterion B is marked above.)

N/A

**Cultural Affiliation**

N/A

**Architect/Builder**

N/A

**Narrative Statement of Significance**

(Explain the significance of the property on one or more continuation sheets.)

**9. Major Bibliographical References**

**Bibliography**

(Cite the books, articles, and other sources used in preparing this form on one or more continuation sheets.)

**Previous documentation on file (NPS):** Primary location of additional data:

- preliminary determination of individual listing (36 CFR 67) has been requested
- previously listed in the National Register
- previously determined eligible by the National Register
- designated a National Historic Landmark
- recorded by Historic American Building Survey # \_\_\_\_\_
- recorded by Historic American Engineering Record # \_\_\_\_\_
- State historic preservation office
- Other State agency
- Federal agency
- Local government
- University
- Other

Name of repository: \_\_\_\_\_

United States Department of the Interior  
National Park Service

NATIONAL REGISTER OF HISTORIC PLACES  
CONTINUATION SHEET

Johnstown Colonial Cemetery  
Johnstown, Fulton Co. NY

Section number 8 Page 1

---

### Statement of Significance

The Johnstown Colonial Cemetery is significant under Criteria A, C and D as a rare, intact example of a burying ground associated with the earliest settlement and subsequent development of the present City of Johnstown. Originally the churchyard of St. John's Episcopal Church (established by Sir William Johnson, 1766), the walled cemetery of 1.1 acres remained the community's primary burial site until the last quarter of the nineteenth century. (The period of significance extends from the establishment of the cemetery to 1914, the year of the last recorded burial and the dedication of the memorial entrance arch.) The Johnstown Colonial Cemetery contains the graves of Johnstown's earliest settlers, numerous Revolutionary War veterans, and prominent community leaders. The arrangement and the carved ornamentation of the extant grave markers reflect the burial customs and the range of funerary motifs popular in the region during the period of significance. Venerated by the Johnstown community since the early twentieth century as an important vestige of its early settlement, the Colonial Cemetery is historically significant for its great age and rarity, as well as for the remarkable degree of integrity it retains to the present day.

The earliest permanent settlement at Johnstown was the result of efforts by Sir William Johnson to create a manorial estate in the wilderness. Born in Ireland in 1715, William Johnson came to America in 1738 to oversee development of his uncle's lands in the Mohawk Valley. Ambitious, shrewd yet diplomatic, Johnson established a successful trading relationship with the Six Nations of the Iroquois Confederacy, especially the Mohawk. He adopted Indian dress, respected Indian customs, learned their language and developed a reputation among the various tribes for fair dealings. On the eve of the French and Indian War in 1755, William Johnson was commissioned Major General and received Royal appointment as "Sole Agent and Superintendent of the Six Nations of Indians and their Allies". Through his untiring efforts under trying circumstances, Johnson secured the Iroquois as powerful military allies in the campaigns against the French. For his crucial services in fostering and preserving the Iroquois alliance, Sir William Johnson was made a baronet; he remained Britain's superintendent for Indian affairs north of the Ohio River until his death in 1774.

By 1760, Sir William Johnson had turned his attention to developing a manorial working estate designed to increase the value of his Mohawk Valley holdings in the vast Tryon County. He induced settlers to occupy the lands around Johnson Hall (National Historic Landmark, 1960), including 600 Scottish Highlander families who immigrated there at Johnson's invitation in 1773. The settlement at Johnstown became the seat of Sir William Johnson's baronial manor. Here, he established an Indian trading post, a mill, a smithy and a large working farm. Johnson organized the first school and recruited a schoolmaster; he organized a court system for Tryon County. He also established and funded construction of St. John's Episcopal Church, the

United States Department of the Interior  
National Park ServiceNATIONAL REGISTER OF HISTORIC PLACES  
CONTINUATION SHEETJohnstown Colonial Cemetery  
Johnstown, Fulton Co. NY

Section number 8 Page 2

first church north of the Mohawk River. (A granite cruciform monument at the west end of the nominated cemetery denotes the approximate location of the original church.)

The nominated Johnstown Colonial Cemetery originated as the community burying ground in the churchyard of St. John's. Built in 1766 of native stone, the first church building proved too small and structurally deficient, and was demolished in 1771. Stone recovered from this church was used to construct the extant wall that encloses the burying ground. Though no above-ground evidence of marked graves from the colonial era remains in the cemetery, records indicate that numerous interments occurred before and during the Revolutionary War. Because of its overall integrity and its establishment coinciding with the founding of Sir William Johnson's frontier community, the Johnstown Colonial Cemetery has the potential to yield archeological information regarding burial practices of Johnstown's earliest permanent European settlers, though this potential has not been investigated through systematic subsurface testing.

The extant collection of approximately 150 gravestones reflects the range of funerary imagery and stone carving practice common to the region during the period of significance. Ranging from the three-lobed headstones of the Federal period to modest-scaled obelisks and simple rectangular stones of the later nineteenth century, the limestone and marble grave markers exhibit such mourning motifs as the funerary urn, weeping willow, drapery swags or entwined vine and floral borders. The earliest extant inscribed stone marks the grave of Donald Fraser, who died in 1782; the latest burial in the cemetery, that of Catherine Paris (1914), is commemorated by a three-lobed granite marker carved with the urn motif to emulate the surrounding historic headstones. A total of 437 interments were recorded from inscriptions on tombstones that were extant early in the twentieth century.

The early history of the Johnstown community is reflected in the graves of soldiers, business and civic leaders and clergymen buried within its encompassing stone walls. Many Scottish surnames appear on the gravestones, reflecting the prominence of this immigrant population in the settlement and early development of Johnstown. Extant monuments denote the graves of at least 18 Revolutionary War veterans, including Major John Little (d. 1822), commander of the Johnstown garrison that repulsed the Loyalist raid of October 25, 1781, led by Sir John Johnson. Another Revolutionary veteran, Edwards Talmadge (d. 1821), established the important local leather glove-making industry, long a source of fame and prosperity for the Johnstown-Gloversville community.

Beginning in 1867, the municipal government of Johnstown assumed maintenance responsibility for the walled Colonial Cemetery. After burial space became exhausted in the 1880s, the municipality took a proprietary interest in preserving the historic cemetery for its significance as the original burying ground of the Johnstown settlement. At public dedication

United States Department of the Interior  
National Park ServiceNATIONAL REGISTER OF HISTORIC PLACES  
CONTINUATION SHEETJohnstown Colonial Cemetery  
Johnstown, Fulton Co. NY

Section number 8 Page 3

---

ceremonies held in 1914, the Daughters of the American Revolution presented the memorial arch above the cemetery gate to commemorate the Johnstown Colonial Cemetery as a local historic landmark.

With the opening of the nearby Johnstown (rural) Cemetery during the last quarter of the nineteenth century, the old Johnstown Colonial Cemetery fell into a long period of neglect. Over time, gravestones were removed, broken, or they became buried; portions of the stone wall collapsed and landscape maintenance became sporadic. Since the mid-1990s, renewed local awareness and appreciation of the old burying ground has led to a broad-based community effort to record, refurbish and maintain the historic Johnstown Colonial Cemetery as a rare and significant feature attesting to Johnstown's early development as a frontier settlement of the Mohawk Valley.

United States Department of the Interior  
National Park Service

NATIONAL REGISTER OF HISTORIC PLACES  
CONTINUATION SHEET

Johnstown Colonial Cemetery  
Johnstown, Fulton Co.

Section number 9 Page 1

---

**Major Bibliographical References**

Bedford, R. E. "The Old Colonial Cemetery." The Patriot, February 27, 1974,  
p. 4.

Hamilton, Milton W., ed. The Papers of Sir William Johnson. Vol. IV.  
Albany, 1928.

List of Burials in Old Colonial Cemetery, Johnstown, N.Y. Unpublished  
typescript, Office of City Historian, Johnstown, N.Y.

Minutes of Village Board, Johnstown: February 25, 1889; March 5, 1889.  
Office of City Clerk, Johnstown, N.Y.

**10. Geographical Data**

Acreage of property 1.1 acres

**UTM References**

Gloversville Quad.

1	1 8	5 5 1 0 8 8	4 7 6 1 7 3 0	2		5 5 1 0 8 8	4 7 6 1 6 7 9
	Zone	Easting	Northing		Zone	Easting	Northing
3		5 5 0 9 8 3	4 7 6 1 6 7 8	4		5 5 0 9 8 3	4 7 6 1 7 2 9
	Zone	Easting	Northing		Zone	Easting	Northing

**Verbal Boundary Description** The boundary of the nominated property includes all that parcel delineated on the enclosed tax map.

**Boundary Justification** The boundary of the nominated property encompasses the whole of the historic cemetery parcel as it existed throughout the period of significance.

**11. Form Prepared By**

name/title Raymond W. Smith, Program Analyst  
 organization NYS Office of Parks, Rec. & Historic Preservation date December, 1997  
 street & number Peebles Island, PO Box 189 telephone 518-237-8643  
 city or town Waterford state NY zip code 12188-0189

**Additional Documentation**

Submit the following items with the completed form:

**Continuation Sheets**

**Maps** A USGS map (7.5 or 15 minute series) indicating the property's location.

A Sketch map for historic districts and properties having large acreage or numerous resources.

**Photographs**

Representative black and white photographs of the property.

**Additional items**

(check with the SHPO or FPO for any additional items)

**Property Owner**

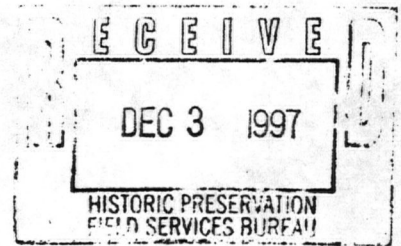
(Complete this item at the request of SHPO or FPO.)

name \_\_\_\_\_  
 street & number \_\_\_\_\_  
 city or town \_\_\_\_\_ state \_\_\_\_\_ zip code \_\_\_\_\_

**Paperwork Reduction Act Statement:** This information is being collected for applications to the National Register of Historic Places to nominate properties for listing or determine eligibility for listing, to list properties, and to amend existing listings. Response to this request is required to obtain a benefit in accordance with the National Historic Preservation Act, as amended (16 U.S.C. 470 et seq.).

**Estimated Burden Statement:** Public reporting burden for this form is estimated to average 18.1 hours per response including the time for reviewing instructions, gathering and maintaining data, and completing and reviewing the form. Direct comments regarding this burden estimate or any aspect of this form to the Chief, Administrative Services Division, National Park Service, P.O. Box 37127, Washington, DC 20013-7127; and the Office of Management and Budget, Paperwork Reductions Project (1024-0018), Washington, DC 20503.





*Board of Supervisors*

*Telephone 518-736-5540  
Fax: 518-762-0224*

20 November 1997

Ms. Ruth L. Pierpont, Director  
Historic Preservation Field Services Bureau  
NYS Office of Parks, Recreation and Historic Preservation  
Pebbles Island  
POB 189  
Waterford, New York 12188-0189

Dear Ms. Pierpont:

On behalf of the Fulton County Board of Supervisors, I wish to express support to place the Johnstown Colonial Cemetery, located in Johnstown, New York, on the National and State Registers of Historic Places. The City of Johnstown is known for its historic heritage and recognition of this cemetery will demonstrate its importance to the region's colonial history.

Some of the ancestors and founding fathers of Johnstown are buried in the Johnstown Colonial Cemetery, "cementing" its role in the history of the development of the United States of America. This recognition will be a "monument" for our community and help to ensure the cemetery's maintenance as a historical treasure.

Sincerely,

A handwritten signature in cursive script that reads "Joseph G. Salamack".

Joseph G. Salamack  
Chairman of the Board of Supervisors

JGS:cda

cc: Mayor Valchovic, City of Johnstown  
Lewis Decker, County Historian  
Noel S. Levee, City of Johnstown Historian

United States Department of the Interior  
National Park Service

National Register of Historic Places  
Continuation Sheet

Section number \_\_\_\_\_ Page \_\_\_\_\_

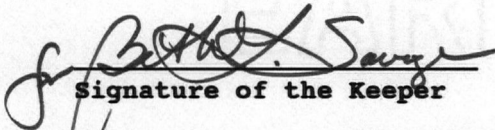
**SUPPLEMENTARY LISTING RECORD**

NRIS Reference Number: 98000129 Date Listed: 03/09/98

Johnstown Colonial Cemetery Fulton NY  
Property Name County State

N/A  
Multiple Name

This property is listed in the National Register of Historic Places in accordance with the attached nomination documentation subject to the following exceptions, exclusions, or amendments, notwithstanding the National Park Service certification included in the nomination documentation.

  
Signature of the Keeper

3/9/98  
Date of Action

=====

Amended Items in Nomination:

**8. Statement of Significance: Criteria**

Criterion D has not been justified and has been deleted as such.

This information was confirmed with NYSHPO staff by telephone.

**DISTRIBUTION:**

- National Register property file
- Nominating Authority (without attachment)

UNITED STATES DEPARTMENT OF THE INTERIOR  
NATIONAL PARK SERVICE

NATIONAL REGISTER OF HISTORIC PLACES  
EVALUATION/RETURN SHEET

REQUESTED ACTION: NOMINATION

PROPERTY NAME: Johnstown Colonial Cemetery

MULTIPLE NAME:

STATE & COUNTY: NEW YORK, Fulton

DATE RECEIVED: 1/23/98      DATE OF PENDING LIST: 2/02/98  
DATE OF 16TH DAY: 2/18/98      DATE OF 45TH DAY: 3/09/98  
DATE OF WEEKLY LIST:

REFERENCE NUMBER: 98000129

NOMINATOR: STATE

REASONS FOR REVIEW:

APPEAL: N DATA PROBLEM: N LANDSCAPE: N LESS THAN 50 YEARS: N  
OTHER: N PDIL: N PERIOD: N PROGRAM UNAPPROVED: N  
REQUEST: N SAMPLE: N SLR DRAFT: Y NATIONAL: N

COMMENT WAIVER: N

     ACCEPT           RETURN           REJECT      3/9/98 DATE

ABSTRACT/SUMMARY COMMENTS:

RECOM./CRITERIA Accept Arc

REVIEWER Savage      DISCIPLINE Architectural History

TELEPHONE \_\_\_\_\_      DATE 3/9/98

DOCUMENTATION see attached comments Y  N see attached SLR  N



JOHNSTOWN COLONIAL CEMETERY

JOHNSTOWN, FULTON CO. NY

N. SMITH, 1997

NEG E NY 5130, WATERFORD NY

GENERAL VIEW WEST

PHOTO 1



JOHNSTOWN COLONIAL CEMETERY

JOHNSTOWN, FULTON CO. NY

R. SMITH, 1997

NEG @ NY SHPO, WATERFORD NY

GENERAL VIEW SW

PHOTO 2



JOHNSTOWN COLONIAL CEMETERY

JOHNSTOWN, FULTON CO. NY

R. SMITH, 1997

NSG @ NY SHPO, WATERLOO NY

GRASSIOTES, VIEW EAST

PHOTO 3



JOHNSTOWN COLONIAL CEMETERY

JOHNSTOWN, FULTON CO. NY

R. SMITH, 1997

N36 @ NY SH 30, WATERFORD, NY

GENERAL VIEW EAST

~~Photo~~ H



JOHNSTOWN COLONIAL CEMETERY

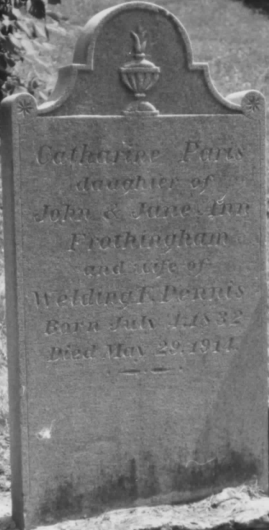
JOHNSTOWN, FULTON CO. NY

R. SMITH, 1997

NEG @ NY SHPO, WATERFORD, NY

~~DETAIL: EARLY 19<sup>TH</sup> C. GRAVESTONES~~

PHOTO 5

A black and white photograph of a gravestone for Catharine Paris. The stone is rectangular with a decorative, arched top featuring a central urn-like ornament. The inscription is in a cursive font. To the right, a portion of another gravestone is visible. The background shows a grassy area and some foliage.

Catharine Paris  
daughter of  
John & Jane Ann  
Frothingham  
and wife of  
Welding K. Perris  
Born July 1, 1832  
Died May 29, 1911

JOHNSTOWN COLONIAL CEMETERY

JOHNSTOWN, FULTON CO. NY

R. SMITH, 1997

NEG @ NY SHPO, WATERFORD, NY

PARIS: LATEST MACKER (1914)

PHOTO 6



JOHNSTOWN COLONIAL CEMETERY

JOHNSTOWN, FULTON CO. NY

R. SMITH, 1997

NE @ NY SHPO, WATERFORD, NY

MEMORIAL ARCH (1908) & WALL  
VIEW WEST

Photo 7



JOHNSTOWN COLONIAL CEMETERY

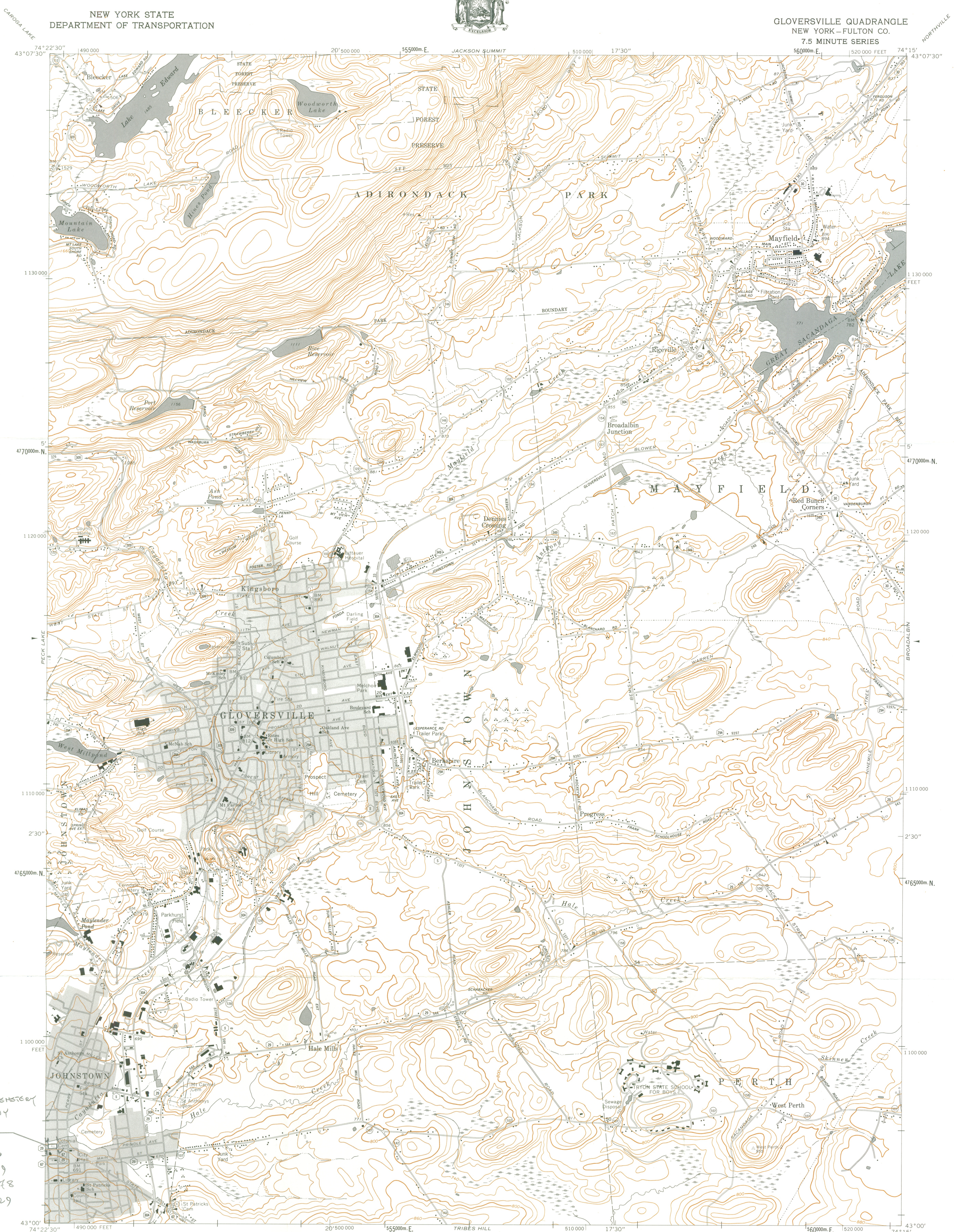
JOHNSTOWN, FULTON CO. NY

R. SMITH, 1997

NEG @ NY SH&P, WATERFORD NY

SITE: FIRST ST. JOHN'S CHURCH,  
VIEW NW

PHOTO 8



JOHNSTOWN COLONIAL CEMETERY  
JOHNSTOWN, FULTON CO. NY  
GLOVERSVILLE QUAD.  
18/  
1) 551088/4761730  
2) 551088/4761679  
3) 550983/4761678  
4) 550983/4761729

Prepared and published in 1983 by the New York State Department of Transportation, in cooperation with the U.S. Department of Transportation, Federal Highway Administration.

Map base from 1970 U.S. Geological Survey 7.5-minute quadrangle.

Map revisions made using 1981 aerial photography, construction plans, official records and other sources. Features revised include: highways and other transportation facilities; civil boundaries; recreation sites; hydrography; and buildings. Grey tint indicates intensely developed areas in which only landmark buildings are shown. Dark grey shows open water.

Revisions may not comply with National Map Accuracy Standards.

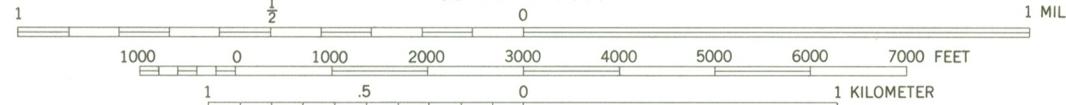
Correspondence concerning this and other maps of the Department of Transportation should be directed to: Map Information Unit, New York State Department of Transportation, State Campus, Albany, New York 12232.

1983 revisions by G. D. Schmidt



QUADRANGLE LOCATION

SCALE 1:24,000



Polyconic projection, 1927 North American datum.

1000-meter ticks based on the New York Transverse Mercator grid. Between 72° and 78° West Longitude, this grid is identical to Zone 18 of the Universal Transverse Mercator grid. Areas east of 72° and west of 78° are direct mathematical extensions of Zone 18.

10,000-foot ticks based on the New York Plane Coordinate grid, East Zone.

Magnetic declination for 1983 is approximately 13° West

Contours, at 20-foot intervals, shown unrevised from 1970 U.S. Geological Survey map. Datum is mean sea level.

INDEX TO 1:9600 (1" = 800') MAP COVERAGE

GLOVERSVILLE (north)
GLOVERSVILLE (south)

BOUNDARIES:

State.....	-----
County.....	-----
Town or City.....	-----
Incorporated Village.....	-----

ROADS:

Touring Route markers:	Divided highways and streets:
Interstate..... (I)	Wide mall.....
U.S. Highway..... (U.S.)	Narrow mall or barrier.....
State..... (S)	
State Highway number and limit..... (S)	Undivided highways and streets:
County road..... (C)	4 or more lanes.....
Interchange number..... (I)	Less than 4 lanes.....
	Vehicle track; trail.....

Control No.:

PROPERTY NAME: Johnstown Colonial Cemetery

OTHER NAME/ NOT APPLICABLE  
SITE No. :

MULTIPLE NAME: NOT APPLICABLE

ADDRESS/ Jct. of W. Green and N. Market Sts.  
BOUNDARY :

CITY: Johnstown

COUNTY: Fulton

STATE: NEW YORK

Restricted Location Information: Owner: LOCAL Resource Type: DISTRICT

Contributing Noncontributing

Buildings	0	0
Sites	1	0
Structures	2	0
Objects	0	0

Nomination/Determination Type: SINGLE RESOURCE

Nominator: STATE GOVERNMENT

Nominator Name:  
NOT APPLICABLE

Federal Agency: NOT APPLICABLE

NPS Park Name: NOT APPLICABLE

Certification: DATE RECEIVED/PENDING NOMINATION

Date: 01/23/98

Other Certification: NOT APPLICABLE

Historic Functions: FUNERARY

Historic Subfunctions: CEMETERY

Current Functions: FUNERARY

Current Subfunctions: CEMETERY

Level of Significance: LOCAL

Applicable Criteria: EVENT  
ARCHITECTURE/ENGINEERING

Significant Person's Name: NOT APPLICABLE

Criteria Considerations: CEMETERY

Area of Significance: EXPLORATION/SETTLEMENT  
ART

Periods of Significance: 1750-1799 1800-1824 Circa: Specific Sig. Years:  
1825-1849 1850-1874

Architect/Builder/Engineer/  
Designer:

Cultural Affiliation:

NOT APPLICABLE

NOT APPLICABLE

Other Documentation:

NOT APPLICABLE

HABS No. N/A

HAER No. N/A

Architectural NO STYLE LISTED  
Styles:

Describe Other Style: NOT APPLICABLE

Foundation Materials: NONE LISTED

Wall Materials: NONE LISTED

Roof Materials: STONE

Other Materials: NONE LISTED

Acreage: 1.1

UTM	Zone	Easting	Northing	Zone	Easting	Northing
-----	------	---------	----------	------	---------	----------

Coordinates:	18	/	5 51 088	/	47 61 730	
				/	/	/