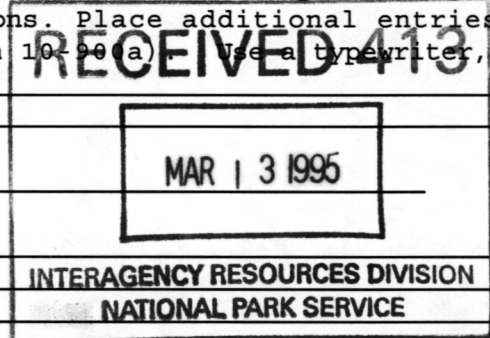


UNITED STATES DEPARTMENT OF THE INTERIOR  
NATIONAL PARK SERVICE  
NATIONAL REGISTER OF HISTORIC PLACES  
REGISTRATION FORM

OMB NO. 1024-0018, NPS FORM

This form is for use in nominating or requesting determinations for individual properties or districts. See instructions in How to Complete the National Register of Historic Places Registration Form (National Register Bulletin 16A). Complete each item by marking "x" in the appropriate box or by entering information requested. If an item does not apply to the property being documented, enter "N/A" for "not applicable." For functions, architectural classifications, materials, and areas of significance, enter only categories and subcategories from the instructions. Place additional entries and narrative items on continuation sheets (NPS Form 10-90 (a)). Use a typewriter, word processor, or computer, to complete all items.



1. Name of Property

historic name MEDINA ARMORY

other names/site number \_\_\_\_\_

2. Location

street & number 302 Pearl Street

[ ] not for publication

CITY Medina

[ ] vicinity

state New York code NY county Orleans code 073 zip code 14103

3. State/Federal Agency Certification

As the designated authority under the National Historic Preservation Act of 1966, as amended, I hereby certify that this [X] nomination [ ] request for determination of eligibility meets the documentation standards for registering properties in the National Register of Historic Places and meets the procedural and professional requirements set forth in 36 CFR Part 60. In my opinion, the property [X] meets [ ] does not meet the National Register criteria. I recommend that this property be considered significant [ ] nationally [ ] statewide [X] locally. ([ ] See continuation sheet for additional comments.)

J.W. Aldous  
Deputy Commissioner for Historic Preservation

9 March '95  
Date

NYS Office of Parks, Recreation and Historic Preservation

In my opinion, the property [ ] meets [ ] does not meet the National Register criteria. ([ ] See continuation sheet for additional comments.)

Signature of commenting or other official

Date

State or federal agency and bureau

4. National Park Service Certification

- I hereby, certify that this property is:
  - entered in the National Register.
  - [ ] See continuation sheet.
  - [ ] determined eligible for the National Register. [ ] see continuation sheet.
  - [ ] determined not eligible for the National Register.
  - [ ] removed from the National Register.

for Signature of keeper Supriya Sanyal Entered in the National Register 4/13/95 Date of Action

5. Classification

Ownership of Property/Category of Property/Number of Resources within Property
(Check as many (check box) (do not include previously listed
boxes as apply) resources in the count)

[ ]private [x]building(s) Contributing Noncontributing
[x]public-local [ ]district 1 buildings
[ ]public-State [ ]site sites
[ ]public-Federal [ ]structure structures
[ ]object objects
1 Total
Number of contributing resources previously
listed in the National Register: NA

NAME OF RELATED MULTIPLE PROPERTY DOCUMENTATION FORM:

ARMY NATIONAL GUARD ARMORIES IN NEW YORK STATE

6. Function or Use

Historic Function

Current Function

DEFENSE; Armory

RECREATION; YMCA

7. Description

Architectural Classification

Materials

(enter categories from instructions)

(enter categories from instructions)

LATE VICTORIAN; castellated style

foundation Medina sandstone

walls Medina sandstone

roof shingles; metal

other

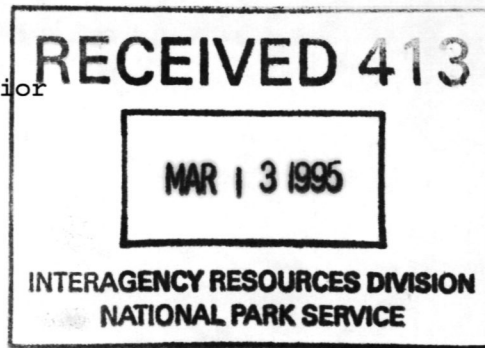
Narrative Description

See attached continuation sheets.

United States Department of the Interior  
National Park Service

NATIONAL REGISTER OF HISTORIC PLACES  
CONTINUATION SHEET

Medina Armory  
Medina, Orleans County



Section 7, Description, page 1

---

### Description

The Medina Armory (1901), a large, castellated style edifice constructed of Medina sandstone, is located in a quiet residential neighborhood in the northwest quadrant of the village of Medina. Medina is a small, yet bustling, urban center serving the surrounding rural agrarian region of northwest Orleans County. The armory is surrounded by relatively intact, mid- to late nineteenth and early twentieth century dwellings which, pending comprehensive survey of the village, may be eligible for the State and National Registers as an historic district. (The historic commercial core of the village, concentrated around Main and Center Streets, is included in the Main Street Historic District, NR: 1995.) The armory occupies a relatively flat, 1.1-acre corner lot at the intersection of Pearl Street and Prospect Avenue (State Route 63). The front (south) lawn of the parcel features scattered shrubbery and concrete sidewalks; a small parking lot is located next to (east of) the armory. There are no outbuildings located on the property.

The massive, rectangular armory consists of a two-story administration building with an attached drill shed. Both sections consist of random ashlar, Medina sandstone walls resting on a slightly raised foundation, also of random ashlar sandstone. The imposing, medieval-inspired administration building is rectangular and symmetrical in form and plan and is distinguished by a massive entrance pavilion on the south facade with engaged octagonal towers, crenelated parapets and a large, segmentally arched sally port containing a pair of deeply recessed, panelled oak doors with tripartite transom lights. Stepped gable ends distinguish the east and west elevations. The hipped and gable roofs of the administration building are covered with shingles and standing seam metal. Fenestration throughout the administration building is symmetrical; tall, narrow, rectangular openings with roughly hewn trim contain 1/1, double-hung sash. Iron grilles protect the first-story windows.

The nine-bay-deep, gable-roofed drill shed features pairs of narrow, flat-arched windows articulated by massive, stone buttresses. Secondary entrances (featuring four paneled doors with four-light transoms) are located on the east and west elevation of the drill shed. The rear (north) of the drill shed,

United States Department of the Interior  
National Park Service

NATIONAL REGISTER OF HISTORIC PLACES  
CONTINUATION SHEET

Medina Armory  
Medina, Orleans County

Section 7, Description, page 2

---

over looking Lee Road (an alley), features three groups of tall, narrow windows articulated by buttresses.

A modern, one-story, flat-roofed garage is attached to the rear (northeast) of the drill shed.

The interior survives with a high degree of integrity of design, materials and craftsmanship. Notable spaces include the entrance hall with a handsome oak staircase and a large company meeting room with elegant tin ceilings. Plaster walls, simple oak baseboards and paneled oak doors with simple wooden trim and transom lights are found throughout the first and second stories. Many spaces have been subdivided with low partition walls, most of which could be easily removed to restore the former spatial relationships of the various rooms and offices. The mostly intact drill shed features exposed steel trusses, wainscoted ceilings, a balcony and wooden floors.

**8. Statement of Significance**

**Applicable National Register Criteria**

(Mark an "x" in one or more boxes for the criteria qualifying the property for National Register listing.)

- A** Property is associated with events that have made a significant contribution to the broad patterns of our history.
- B** Property is associated with the lives of persons significant in our past.
- C** Property that embodies the distinctive characteristics of a type, period, or method of construction or represents the work of a master, or possesses high artistic values, or represents a significant and distinguishable entity whose components lack individual distinction.
- D** Property has yielded, or is likely to yield, information important in pre-history or history.

**Criteria Considerations: NA**

- A** owned by a religious institution or used for religious purposes.
- B** removed from its original location.
- C** a birthplace or grave.
- D** a cemetery.
- E** a reconstructed building, object or structure.
- F** a commemorative property.
- G** less than 50 years of age or achieved significance within the past 50 years.

**Area of Significance**

(Enter categories from instructions.)

Military History

Architecture

**Period of Significance**

1901 - ca. 1912

**Significant Dates**

1901; ca. 1912

**Significant Person**

(Complete if Criterion B is marked above.)

na

**Cultural Affiliation**

na

**Architect/Builder**

George L. Heins, State Architect

**Narrative Statement of Significance**

See attached continuation sheets.

**9. Major Bibliographical References**

See attached continuation sheets

**Previous documentation on file (NPS): Primary location of additional data:**

- preliminary determination of individual listing (36 CFR 67) has been requested
- previously listed in the National Register
- previously determined eligible by the National Register
- designated a National Historic Landmark
- recorded by Historic American Building Survey # \_\_\_\_\_
- recorded by Historic American Engineering Record # \_\_\_\_\_
- State historic preservation office
- Other State agency
- Federal agency
- Local government
- University
- Other

Name of repository:

Division for Historic Preservation

United States Department of the Interior  
National Park Service

NATIONAL REGISTER OF HISTORIC PLACES  
CONTINUATION SHEET

Medina Armory  
Medina, Orleans County

Section 8, Significance, page 1

---

**Statement of Significance**

The Medina Armory (1901) is architecturally significant as a remarkably intact, representative example of an early twentieth century National Guard armory in New York State. Designed by State Architect George L. Heins for the 29th Separate Company, the building retains a high degree of integrity of design, materials and craftsmanship and embodies the three distinctive characteristics of the building type as defined in the National Register Multiple Property Documentation Form (MPDF) for Army National Guard Armories in New York State (May 1993). 1: In terms of function, the armory serves as both a military facility and a social clubhouse for a local unit of the National Guard, as well as an imposing civic monument to military and government strength and presence within the community. 2: In terms of plan, the armory consists of an administration building with an attached drill shed at ground level. 3: In terms of design and decoration, the armory embodies the distinctive features of the fortress-like, castellated style that characterized many late nineteenth and early twentieth century armories. The armory is also historically significant for its association with the National Guard, an integral component of the American military system. Although no longer serving the National Guard, the building retains its obvious military character.

George L. Heins replaced Isaac G. Perry in 1899 as State Architect; he held the office until 1907. Heins generally continued to design armories in the castellated/Richardsonian Romanesque style popularized by Perry (see MPDF cover statement, Historic Overview). Further research is needed to document how many armories Heins designed during his tenure, but to date, seven are known to survive. They are:

1901	Medina Armory
1904	Gloversville Armory
1904	Flushing (17th Separate Company) Armory
1905	East Main Street (Rochester) Armory
1905	Oneonta Armory
1906	Oswego Armory
1907	West Jefferson (Syracuse) Armory

United States Department of the Interior  
National Park Service

NATIONAL REGISTER OF HISTORIC PLACES  
CONTINUATION SHEET

Medina Armory  
Medina, Orleans County

Section 8, Significance, page 2

---

The Gloversville, Oneonta, Oswego and Syracuse armories are already listed in the National Register; the others were determined eligible in May 1993. All but the Medina, Rochester and Syracuse armories still serve as active military facilities.

Like Perry's armories, Heins's armories incorporate features of Medieval Gothic military architecture, including soaring towers, crenelated parapets, massive sally ports and/or iron portcullises. Heins's armories, however, tend to reflect a more modern and stylized interpretation of medieval forms and details (Peckham, Oswego Armory, National Register Nomination Form, Section 8, page 2). The Medina Armory, believed to be Heins's first armory commission, is particularly distinguished by its use of Medina sandstone, an outstanding regionally quarried product renowned for its beauty and durability.

The Medina Armory is also historically significant under criterion A for its association with American military history in general and Army National Guard history in particular. The armory was built for the 29th Separate Company, mustered into the New York State National Guard on December 28, 1891 under the command of Captain A. S. Ross and including three officers and 55 enlisted men.<sup>1</sup> The 29th Separate Company was first housed in the upper

---

1. Unofficially the history of the unit was traced back to Col. Hesikiah Bowen's Rifles by the late Mr. Russell J. Waldo, former historian for the village of Medina. The "Rifles" were organized by Bowen in 1838-39 when the threat of war between Maine and New Brunswick caused President Van Buren to call for volunteers to defend the border against British troops. Although the Rifles never actually served in Maine (or anywhere else), the unit survived for several years in Medina. The Rifles were replaced by Linus Beecher's Light Guards who were little more than a social club. The name of the unit was changed to Pitts Light Guards several years later. Nothing else is presently known about the pre-1891 heritage of the 29th Separate Company.

United States Department of the Interior  
National Park Service

NATIONAL REGISTER OF HISTORIC PLACES  
CONTINUATION SHEET

Medina Armory  
Medina, Orleans County

Section 8, Significance, page 3

---

floors of the commercial building at 417 Main Street, a contributing component of the Main Street Historic District (NR: 1995). Agitation for a real armory began almost immediately; assemblyman and local attorney Fred Downs made the formal solicitation at Albany ("Medina Tribune," 1/28/97). Subsequent articles in the "Tribune" and "Medina Journal-Register" reveal that the present 250' x 210' lot was acquired during the summer of 1899, the contract for construction was awarded to Filkens & DeGraff (about whom nothing is currently known), and that excavation had commenced by September 1899. Final inspection of the completed building was held on November 4, 1901 by Inspector A. Passey of the State Armory Commission. Total costs, including \$11,000 for the land and \$46,160 for the building and fixtures, were \$57,160. The building originally had a flat roof; it was replaced by a hipped roof with stepped gable ends ca. 1912.

The 29th Separate Company served in the 1898 Spanish American War. The unit also participated in the Buffalo Street Car Strike of April 9-12, 1913, by which time it was known as Company F, Third Regiment, N.G., N.Y. The unit served in World War I as part of the 27th Division from April 1917 to February 1919. During its absence, a home guard unit of Buffalo's 74th Regiment was stationed in Medina. This unit was in existence for about 18 months. Company F, Third Regiment was federalized on November 25, 1919, under the command of A.E. Munson, and was redesignated Co. F. 108th Infantry NYNG. The unit later served during World War II, at which time it was known as Company L, 65th Regiment.

The general history of the National Guard (and the significance of its related armories) is discussed at length in Section E (Historic Overview) of the Multiple Property Documentation Form for Army National Guard Armories in New York State. In summary, the volunteer militia (i.e., the National Guard) has been, and to a large extent still is, the backbone of the American military system since the Colonial era. The nominated armory, like virtually all other National Guard armories, remains a prominent visual reminder of and monument to the pivotal role played by the volunteer militia in American military history.

United States Department of the Interior  
National Park Service

NATIONAL REGISTER OF HISTORIC PLACES  
CONTINUATION SHEET

Medina Armory  
Medina, Orleans County

Section 9, Bibliography, page 1

---

**Major Bibliographical References**

Albany, New York. Division for Historic Preservation. Research files.

Bland, Captain John R. Commander, Company L, 65th Infantry, N.Y.G. "History of the Company Since Original Muster in "1891," typescript, November 16, 1941.

Fogelson, Robert M. America's Armories: Architecture, Society and Public Order. Boston: President and Fellows of Harvard College, 1989.

Grinnell, Edsel. Medina Historical Society. Typescript, 1994.

Whittleton, Alfred and McElwee, Don. Typescript History of Company C, 1st Battalion (Mechanized) 174th Infantry NYANG, 1965.

Wright, Capt. Robert K., and Hylton-Greene, Renee. A Brief History of the Militia and the National Guard. Washington, D.C.: 1986.

Medina Armory, Medina, Orleans County

10. Geographical Data

Acreage of property 1.1 acres

**UTM References**

(Place additional UTM references on a continuation sheet.)

A	<u>1 8 </u>	<u>2 2 4 4 8 0 </u>	<u>4 7 9 0 8 2 7 </u>	B	<u> </u>	<u> </u>	<u> </u>	<u> </u>	<u> </u>	<u> </u>	<u> </u>
	Zone	Easting	Northing		Zone	Easting	Northing				
C	<u> </u>	<u> </u>	<u> </u>	D	<u> </u>	<u> </u>	<u> </u>	<u> </u>	<u> </u>	<u> </u>	<u> </u>
	Zone	Easting	Northing		Zone	Easting	Northing				

**Verbal Boundary Description**

The boundary is drawn to encompass the entire lot presently occupied by the armory. (See attached county tax map 079.36-2-37).

**Boundary Justification**

The boundary was drawn to encompass the fullest extent of land historically and presently associated with the nominated armory which, in this case, coincides with the entire 1.1-acre lot on which the armory is sited.

11. Form Prepared By

name/title Nancy L. Todd, Program Analyst  
organization NYSHPO, Division for Historic Preservation date March 1995  
street & number Pebbles Island, PO Box 189 telephone 518-237-8643  
city or town Waterford state NY zip code 12188-0189

Additional Documentation

Submit the following items with the completed form:

**Continuation Sheets**

**Maps**

- A **USGS map** (7.5 or 15 minute series) indicating the property's location.
- A **Sketch map** for historic districts and properties having large acreage or numerous resources.

**Photographs**

Representative **black and white photographs** of the property.

**Additional items**

(check with the SHPO or FPO for any additional items)

**Property Owner**

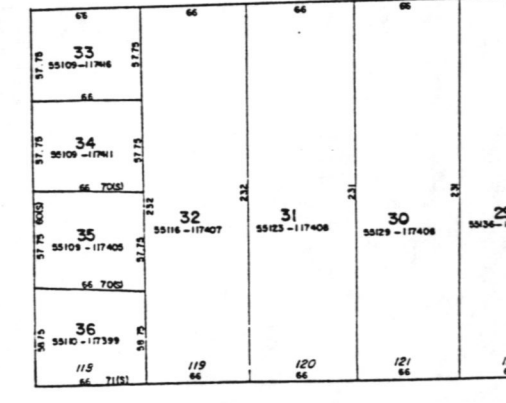
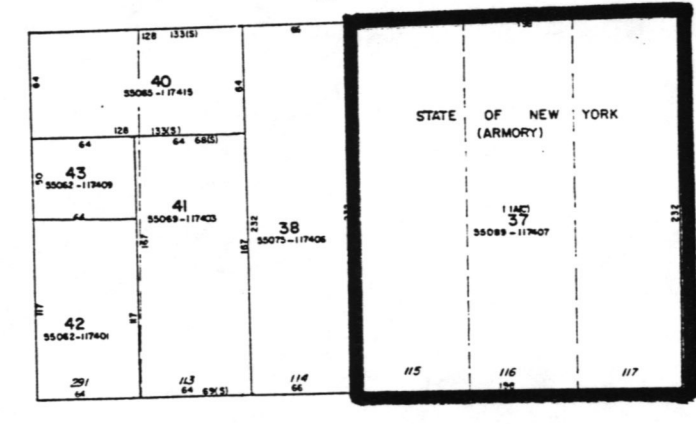
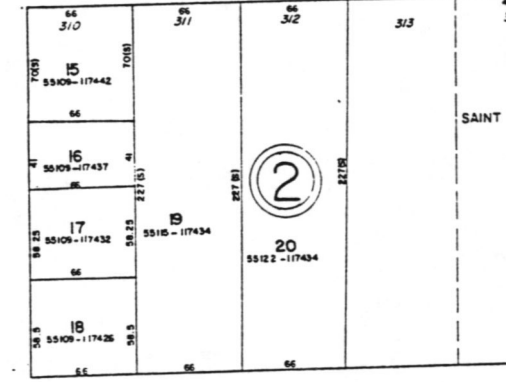
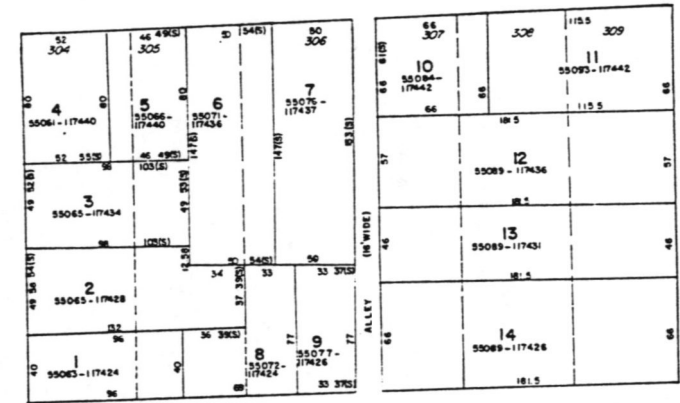
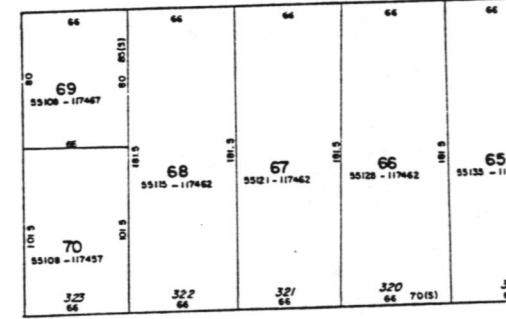
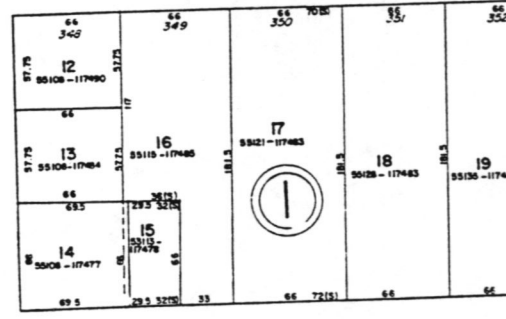
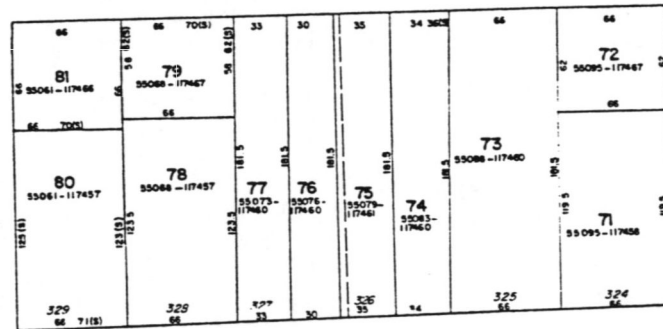
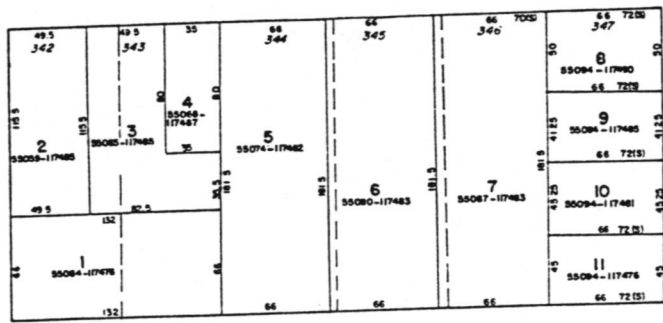
(Complete this item at the request of SHPO or FPO.)

name \_\_\_\_\_  
street & number \_\_\_\_\_  
city or town \_\_\_\_\_ state \_\_\_\_\_ zip code \_\_\_\_\_

**Paperwork Reduction Act Statement:** This information is being collected for applications to the National Register of Historic Places to nominate properties for listing or determine eligibility for listing, to list properties, and to amend existing listings. Response to this request is required to obtain a benefit in accordance with the National Historic Preservation Act, as amended (16 U.S.C. 470 et seq.).

**Estimated Burden Statement:** Public reporting burden for this form is estimated to average 18.1 hours per response including the time for reviewing instructions, gathering and maintaining data, and completing and reviewing the form. Direct comments regarding this burden estimate or any aspect of this form to the Chief, Administrative Services Division, National Park Service, P.O. Box 37127, Washington, DC 20013-7127; and the Office of Management and Budget, Paperwork Reductions Project (1024-0018), Washington,

E 550,500  
N 1174,000



E 550,500  
N 1174,000

Medina Armory, Medina, Orleans Co.  
Tax map 079.36-2-37

UNITED STATES DEPARTMENT OF THE INTERIOR  
NATIONAL PARK SERVICE

NATIONAL REGISTER OF HISTORIC PLACES  
EVALUATION/RETURN SHEET

REQUESTED ACTION: NOMINATION

PROPERTY Medina Armory  
NAME:

MULTIPLE Army National Guard Armories in New York State MPS  
NAME:

STATE & COUNTY: NEW YORK, Orleans

DATE RECEIVED: 3/13/95 DATE OF PENDING LIST: 3/28/95  
DATE OF 16TH DAY: 4/13/95 DATE OF 45TH DAY: 4/27/95  
DATE OF WEEKLY LIST:

REFERENCE NUMBER: 95000399

NOMINATOR: STATE

REASONS FOR REVIEW:

APPEAL: N DATA PROBLEM: N LANDSCAPE: N LESS THAN 50 YEARS: N  
OTHER: N PDIL: N PERIOD: N PROGRAM UNAPPROVED: N  
REQUEST: N SAMPLE: N SLR DRAFT: N NATIONAL: N

COMMENT WAIVER: N

ACCEPT  RETURN  REJECT 4/13/95 DATE

Entered in the  
National Register

ABSTRACT/SUMMARY COMMENTS:

RECOM./CRITERIA \_\_\_\_\_

REVIEWER \_\_\_\_\_ DISCIPLINE \_\_\_\_\_

TELEPHONE \_\_\_\_\_ DATE \_\_\_\_\_

DOCUMENTATION see attached comments Y/N see attached SLR Y/N



Medina Armory  
Medina, Orleans Co.

Photo: R. Bodo, 1993

Neg: OPRHF

Front (south) elevation



SUMMER DAY CAMP  
AGES 7-12  
PRG & OPEN HOUSE  
FOR FALL '93  
SAT MAY 10-12

PHOTOGRAPHIC SERVICE

Medina Armory

Medina, Orleans Co.

Photo: R. Bodo 1993

Neg: OPRHP

Front (south) and side  
elevations



Medina Armory  
Meding, Orleans Co.

Photo: R. Bodo, 1993

Neg: OP@HP

side elevation of  
drill shed



Medina Armory

Medina, Orleans Co.

Photo: R. Bodo, 1993

Neg: OPRHP

gym

**KEY FOLD BATES.**

Small 100 pages & covers . . . \$2.00

Large 100 pages . . . \$3.00

College 100 pages . . . \$4.00

Index . . . \$1.00

Tables . . . \$1.00

NO SMOKING



medina Armory  
medina, Orleans Co.

R. Bodo, 1993

Neg: OPETHP

Typical woodwork



Medina Armory

Medina, Orleans Co.

Photo: R. Bodo, 1993

Neg: OPRHP

Stair case



HINNH 87900 96 NHF

Medina Armory

Medina, Orleans Co.

R. Bodo, 1993; Negs: 0PEHF

Drill shed



Medina Armory

Medina, Orleans Co.

Photo: R. Bodo  
~~N. Todd~~, 1993

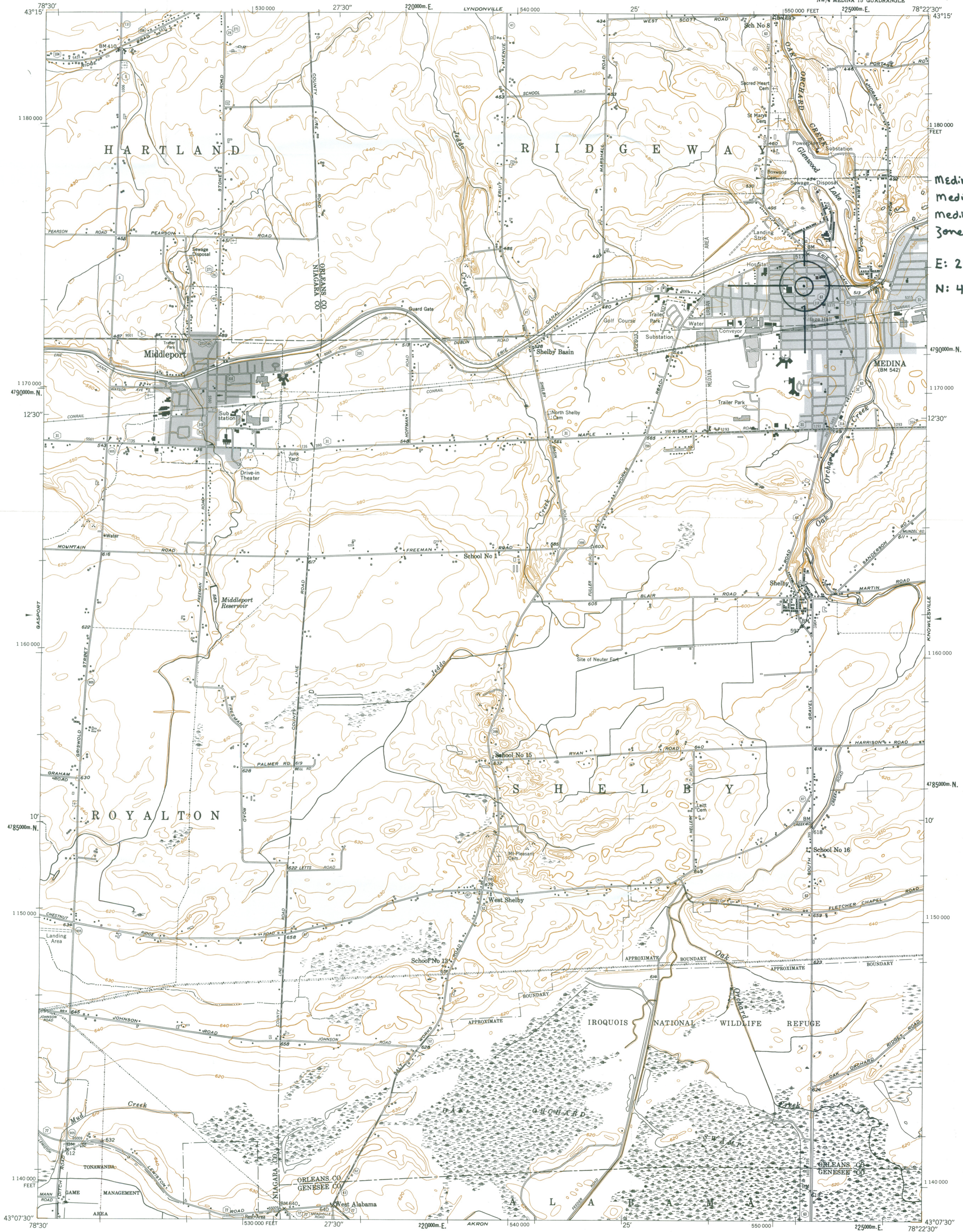
Neg: OPEHP

Typical corridor with  
massive oak doors

NEW YORK STATE DEPARTMENT OF TRANSPORTATION



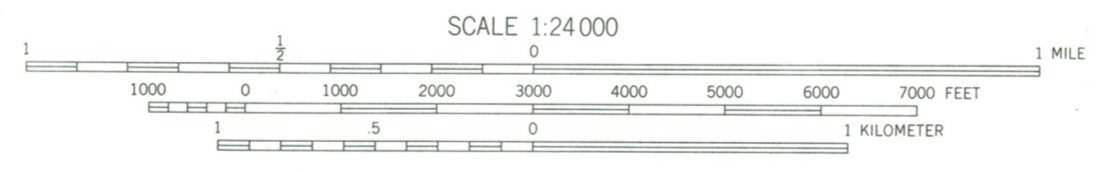
MEDINA QUADRANGLE NEW YORK 7.5 MINUTE SERIES PLANIMETRIC



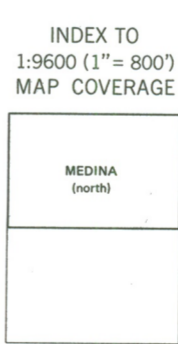
Medina Armory  
Medina, Orleans Co.  
Medina Quad  
Zone 18; 1:24,000

E: 224480  
N: 4790827

Prepared and published in 1976 by the New York State Department of Transportation, in cooperation with the U.S. Department of Transportation, Federal Highway Administration.  
Map base from 1951 U.S. Geological Survey 7.5-minute quadrangle.  
Map revisions made using 1974 aerial photography, construction plans, official records and other sources. Features revised include: highways and other transportation facilities; civil boundaries; recreation sites; hydrography; and buildings. Grey tint indicates intensely developed areas in which only landmark buildings are shown.  
Revisions may not comply with National Map Accuracy Standards.  
Correspondence concerning this and other maps of the Department of Transportation should be directed to: Map Information Unit, New York State Department of Transportation, State Campus, Albany, New York 12232.  
1976 revisions by A. R. Scarlata



SCALE 1:24,000  
1000-meter ticks based on the New York Transverse Mercator grid.  
Between 72° and 78° West Longitude, this grid is identical to Zone 18 of the Universal Transverse Mercator grid. Areas east of 72° and west of 78° are direct mathematical extensions of Zone 18.  
10,000-foot ticks based on the New York Plane Coordinate grid, West Zone



BOUNDARIES:

State	.....
County	.....
Town or City	.....
Incorporated Village	.....
Federal-Aid Urban Area	.....

ROADS:

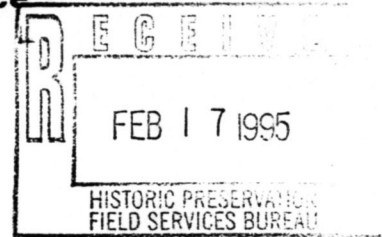
Touring Route markers:	Divided highways and streets:
Interstate..... (I)	Wide mall..... (W)
U. S. .... (U)	Narrow mall or barrier..... (N)
State..... (S)	Undivided highways and streets:
State Highway number and limit..... (R)	4 or more lanes..... (R)
County road..... (C)	Less than 4 lanes..... (L)
Interchange number..... (I)	Vehicle track; trail..... (V)

433 Main Street



Medina, NY 14103-1416

February 14, 1995



Nancy Todd  
NYS Office of Parks,  
Recreation, & Historic Preservation  
Historic Preservation Field Services Bureau  
Peebles Island, P.O. Box 189  
Waterford, NY 12188-0189

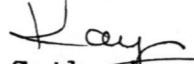
Dear Ms. <sup>Nancy</sup>Todd:

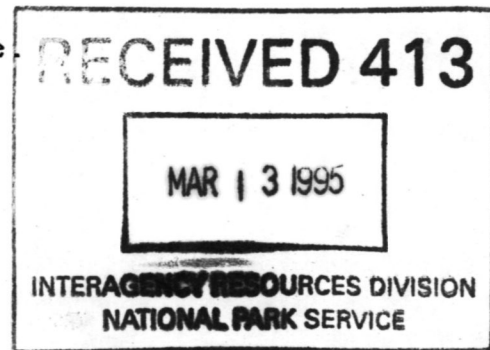
We were very pleased to receive the notice that the Medina Armory is presently being considered for National and State Register listing.

The armory is a magnificent structure and we are proud that it still serves the community. It is an outstanding example of adoptive reuse of a historic building.

We look forward to a positive response.

Sincerely,

  
Catherine S. Revelas



798-4287