

UNITED STATES DEPARTMENT OF THE INTERIOR
NATIONAL PARK SERVICE
NATIONAL REGISTER OF HISTORIC PLACES
REGISTRATION FORM

OMB NO. 1024-0018, NPS FORM

553
RECEIVED
APR 17 1992

This form is for use in nominating or requesting determinations for individual properties or districts. See instructions in How to Complete the National Register of Historic Places Registration Form (National Register Bulletin 16A). Complete each item by marking "x" in the appropriate box or by entering information requested. If an item does not apply to the property being documented, enter "N/A" for "not applicable." For functions, architectural classifications, materials, and areas of significance, enter only categories and subcategories from the instructions. Place additional entries and narrative items on continuation sheets (NPS Form 10-900a). Use a typewriter, word processor, or computer, to complete all items.

1. Name of Property

historic name FELT COBBLESTONE GENERAL STORE

other names/site number _____

2. Location

street & number 6452 Victor-Manchester Rd (Route 96) [] not for publication

town Victor [] vicinity

state New York code NY county Ontario zip code 14564

3. State/Federal Agency Certification

As the designated authority under the National Historic Preservation Act of 1966, as amended, I hereby certify that this [X] nomination [] request for determination of eligibility meets the documentation standards for registering properties in the National Register of Historic Places and meets the procedural and professional requirements set forth in 36 CFR Part 60. In my opinion, the property [X] meets [] does not meet the National Register criteria. I recommend that this property be considered significant [] nationally [] statewide [X] locally. ([] See continuation sheet for additional comments.)

Julia S. Stora 3/26/92
Deputy Commissioner for Historic Preservation Date
Signature of certifying official

State or Federal agency and bureau _____

In my opinion, the property [] meets [] does not meet the National Register criteria. ([] See continuation sheet for additional comments.)

Signature of commenting or other official _____ Date _____

State or federal agency and bureau _____

4. National Park Service Certification

I hereby certify that this property is:
[X] entered in the National Register.
[] See continuation sheet.
[] determined eligible for the National Register. [] see continuation sheet.
[] determined not eligible for the National Register.

[] removed from the National Register.
[] other, (explain:)

entered in the National Register
Signature of keeper Aelona Byers Date of Action 5/22/92

5. Classification

Ownership of Property
(Check as many boxes as apply)

Category of Property
(check only one box)

Number of Resources within Property
(do not include previously listed resources in the count)

- private
- public-local
- public-State
- public-Federal

- building(s)
- district
- site
- structure
- object

Contributing	Noncontributing	
1	1	buildings
		sites
		structures
		objects
1	1	Total

Name of related multiple property listings (enter "N/A" if property is not part of a multiple property listing)

Number of contributing resources previously listed in the National Register

Cobblestone Architecture of New York State

na

6. Function or Use

Historic Function

(enter categories from instructions)

COMMERCE; store

Current Functions

(enter categories from instructions)

COMMERCE; store

7. Description

Architectural Classification

(enter categories from instructions)

MID-19TH CENTURY; GREEK REVIVAL

Materials

(enter categories from instructions)

foundation Cobblestone; fieldstone

walls COBBLESTONE

roof shingles

other _____

Narrative Description

(describe the historic and current condition of the property on one or more continuation sheets.)

United States Department of the Interior
National Park Service

NATIONAL REGISTER OF HISTORIC PLACES
CONTINUATION SHEET

Felt Cobblestone Store
Victor, Ontario County

Section 7 page 1

DESCRIPTION

The Felt Cobblestone General Store (late 1830s) is located on the north side of State Route 96 in the hamlet of East Victor in the town of Victor in northwestern Ontario County. (Other than the New York State Thruway, Route 96 is the only primary east-west thoroughfare through northern Ontario County.) Once a quiet rural farming community, Victor is now a heavily developed suburban bedroom community serving the city of Rochester in nearby Monroe County. During most of the nineteenth and early twentieth centuries, East Victor was a crossroads hamlet centered around the intersection of McMahon and East Victor Roads with Route 96 at Mud Creek. Although a few scattered older buildings survive in the hamlet, most of the community itself has been engulfed by a variety of modern commercial, residential and professional development.

The store is located at the heart of the historic core of the hamlet and is situated on a 72' x 96' lot on the northwest corner of the intersection of McMahon Road and Route 96. The boundary is drawn to coincide with historic and current legal lot lines of the property. The building sits close to both roads. Small paved and gravel parking lots are located west of the store. A large, late nineteenth/early twentieth century barn is located on the same parcel behind (north of) the store. Because no direct historical association between the barn and store is known, the barn is a non-contributing component of the nomination.

The store is a two-story, three-bay, gable-roofed building with its gable end oriented southward toward Route 96. Built into a hill, the building is exposed one full story on the northwest corner. The walls are built of irregularly shaped, multi-colored, 2 1/2" - 3 1/2" field cobbles laid four stones per quoin on the front and side elevations, and three cobbles per quoin on the rear elevation. Horizontal and vertical mortar joints feature the typical "V"-shaped tooling. Limestone quoins (of the standard 12" x 6" x 18" dimension) articulate the corners of the building. The gable roof is clad with modern asphalt shingles and features a simple wooden cornice with prominent returns. The basement/foundation on the east, west and south elevations is of cut stone; the basement level on the north elevation is of large, rough field cobbles.

The three-bay, center-entrance front facade features a finely crafted, cut limestone storefront with wide piers resting on a watertable and supporting a wide entablature. Storefront windows contain two-over-two, double-hung sash and are ornamented with molded wood reveals and panels. (The wrought-iron window

United States Department of the Interior
National Park Service

NATIONAL REGISTER OF HISTORIC PLACES
CONTINUATION SHEET

Felt Cobblestone Store
Victor, Ontario County

Section 7 page 2

balustrades are recent additions.) The center entrance features a deeply recessed, paneled double-door within modern aluminum storm doors. Second-story windows contain twelve-over-twelve, double-hung sash and have limestone lintels and sills. (Modern aluminum storm windows have been added.) A semi-elliptical wood louver with limestone trim is located in the apex of the front gable end. A raised concrete platform spans the front facade; this early twentieth century addition replaced an older wooden platform.

Fenestration on the north (rear) facade is symmetrical and features two full-sized windows at the basement, first, and second stories and two small windows at the attic story. East and west (side) elevations are mostly blind. There is one irregularly placed second-story window on the east elevation and an irregularly placed second-story window and a door on the west elevation. A modern frame vestibule on the west elevation provides access to the rear of the first story.

The interior survives substantially intact. Still serving as commercial space, the first floor contains a single, large front public room for the display of goods and a small rear room used for storage and office space related to the operation of the store. The second story, which originally contained additional commercial space, has been converted into an apartment.

The late nineteenth/early twentieth century barn is a large, two-story, frame building with a fully exposed rear (west) fieldstone basement. The building is sheathed with vertical board siding and features irregular fenestration. Most windows contain eight-over-eight, double-hung sash. For the purpose of the present nomination, the barn does not contribute to the significance of the property according to the areas of significance or the period of significance defined for the cobblestone store. However, if and when a comprehensive survey of the East Victor is completed, the barn may be found eligible in the local context.

8. Statement of Significance

Applicable National Register Criteria

(Mark "X" in one or more boxes for the criteria qualifying the property for National Register listing.)

- A Property is associated with events that have made a significant contribution to the broad patterns of our history.
- B Property is associated with the lives of persons significant in our past.
- C Property that embodies the distinctive characteristics of a type, period, or method of construction or represents the work of a master, or possesses high artistic values, or represents a significant and distinguishable entity whose components lack individual distinction.
- D Property has yielded, or is likely to yield, information important in pre-history or history.

Criteria Considerations

(Mark "X" in all the boxes that apply.)

- A owned by a religious institution or used for religious purposes.
- B removed from its original location.
- C a birthplace or grave.
- D a cemetery.
- E a reconstructed building, object or structure.
- F a commemorative property.
- G less than 50 years of age or achieved significance within the past 50 years.

Area of Significance

(Enter categories from instructions.)

ARCHITECTURE

Period of Significance

ca. late 1830s

Significant Dates

ca. late 1830s

Significant Person

(Complete if Criterion B is marked above.)

Cultural Affiliation

NA

Architect/Builder

unknown

Narrative Statement of Significance

(Explain the significance of the property on one or more continuation sheets.)

9. Major Bibliographical References

Bibliography

(Cite the books, articles, and other sources used in preparing this form on one or more continuation sheets.)

Previous documentation on file (NPS): Primary location of additional data:

- | | |
|---|--|
| <input type="checkbox"/> preliminary determination of individual listing (36 CFR 67) has been requested | <input checked="" type="checkbox"/> State historic preservation office |
| <input type="checkbox"/> previously listed in the National Register | <input type="checkbox"/> Other State agency |
| <input type="checkbox"/> previously determined eligible by the National Register | <input type="checkbox"/> Federal agency |
| <input type="checkbox"/> designated a National Historic Landmark | <input type="checkbox"/> Local government |
| <input type="checkbox"/> recorded by Historic American Building Survey # _____ | <input type="checkbox"/> University |
| <input type="checkbox"/> recorded by Historic American Engineering Record # _____ | <input type="checkbox"/> Other |

Name of repository:
Division for Historic Preservation

United States Department of the Interior
National Park Service

NATIONAL REGISTER OF HISTORIC PLACES
CONTINUATION SHEET

Felt Cobblestone Store
Victor, Ontario County

Section 8 page 1

SIGNIFICANCE

The Felt Cobblestone General Store (ca. late 1830s) is architecturally significant as a largely intact example of the cobblestone method of construction in New York State and as a rare surviving example of commercial architecture in East Victor. The store embodies the distinctive characteristics of the cobblestone method of construction in the use of field cobbles laid in horizontal rows and bonded with limestone mortar, the use of limestone quoins to decorate and stabilize the corners of the building and the use of limestone lintels to ornament and reinforce the door and window openings. Typical of vernacular cobblestone buildings executed during the Middle Period (ca. 1835 - ca. 1845) of this particular method of construction, the store features medium-sized (2 1/2" - 3 1/2"), irregularly shaped, variously colored field cobbles laid four cobbles per 12" quoin on the front facade and side elevations and three cobbles per quoin on the rear elevation. Both the horizontal and vertical joints are carefully articulated with "V"-shaped tooling as is typical of Middle Period cobblestone construction techniques.

The Felt Cobblestone Store is one of approximately 101 extant cobblestone buildings in Ontario County, approximately 16 of which are located in Victor (town and village). In terms of its cobblestone masonry, the Felt Store is a relatively common, vernacular example of this method of construction in Ontario County in its use of variously colored, medium-sized field cobbles laid four cobbles per quoin on the front facade. However, in other respects, particularly in its finely crafted limestone storefront, the building is a highly sophisticated example of early nineteenth century cobblestone architecture.

In a statewide context, the Felt store is one of approximately 20 cobblestone commercial buildings in New York. Of these 20, approximately six served as stores, six were taverns, four were blacksmith shops, two were carriage shops, one was a warehouse and one was an offices. Other than its use of cobblestone as a building material, the Felt store (as well as all the other cobblestone commercial buildings) is like any other early to mid-nineteenth century general store in its siting at the center of the village (or any other relatively densely settled community), its large, open first-story space for commercial transaction, and its secondary upstairs space for auxiliary commercial, storage or residential use. Cobblestone commercial buildings were built in the smaller villages and hamlets where the construction materials were abundant and relatively inexpensive. They were never built in the larger urban

United States Department of the Interior
National Park Service

NATIONAL REGISTER OF HISTORIC PLACES
CONTINUATION SHEET

Felt Cobblestone Store
Victor, Ontario County

Section 8 page 2

areas. Compared to the other six cobblestone stores in New York, the Felt Store is among the best, most intact examples of the type, partly because of its overall integrity and partly because of its finely crafted limestone storefront.

In the local context, the Felt store is also significant as a rare surviving example of early nineteenth century architecture in East Victor. It is one of the few intact historic buildings in this crossroads hamlet, which began as a small milling community along Mud Creek. By 1874 the small, yet prosperous, hamlet boasted a saw mill, a grist mill, the Felt general store, another store, a school and more than a dozen dwellings (Atlas of Ontario County, p. 79). Title research suggests that the store was built between 1836, when Jabez Felt bought the property, and 1841, when the property and several other buildings were sold to settle the debts of Charles S. Felt upon his death. Between 1841 and 1907 there were nine deed transfers, but from 1907 to 1973 the store remained the property of the Goldfarb/Braiman family.

Although a comprehensive survey of the hamlet has not been conducted, it appears that the Felt Store is one of the oldest extant buildings in the community, and is certainly one of the most intact of the historic building stock. In terms of its form, massing and decorative detailing, the building is also significant as a rare surviving example of late Federal/early Greek Revival style architecture. It embodies the distinctive regional features of the period and style in its two-story, rectangular, gable-roofed form with gable end toward the street, its simple wood cornice with prominent returns, its three-bay, center-entrance facade, its storefront with Doric-inspired piers supporting a wide, unembellished entablature, and its Adamesque, louvered fan in the front gable end.

United States Department of the Interior
National Park Service

NATIONAL REGISTER OF HISTORIC PLACES
CONTINUATION SHEET

Felt Cobblestone Store
Victor, Ontario County

Section 9 page 1

BIBLIOGRAPHY

- Albany, NY. Division for Historic Preservation. Research Files.
- Atlas of Ontario County, New York. Philadelphia, PA: Pomeroy, Whitman & Co., 1874.
- Canandaigua, NY. Ontario County Historical Society. Survey Records and Research Files.
- Morris, Robert H. and Jane B. Photographic Survey of Ontario County Cobblestone Buildings, 1979-1981. Landmark Society of Western New York, Rochester.
- Roudabush, Robert. Unpublished inventory of cobblestone buildings in New York State, conducted 1976-1980; typescript on file at the Landmark Society of Western New York in Rochester.
- Schmidt, Carl F. Cobblestone Masonry. Scottsville, NY: 1966
- Shelgren, Olaf William, Lattin, Carry and Frasch, Robert W. Cobblestone Landmarks of New York State. Syracuse, NY: Syracuse University Press, 1978.
- Swartout, Barbara C. Ontario County Cobblestones. Canandaigua, NY: Ontario County Historical Society, 1981.

10. Geographical Data

Acreage of property less than one

UTM References

(Place additional UTM references on a continuation sheet.)

A	<u>1 8 </u>	<u>3 0 5 8 0 0 </u>	<u>4 7 6 0 5 3 0 </u>	B	<u> </u>	<u> </u>	<u> </u>
	Zone	Easting	Northing		Zone	Easting	Northing
C	<u> </u>	<u> </u>	<u> </u>	D	<u> </u>	<u> </u>	<u> </u>
	Zone	Easting	Northing		Zone	Easting	Northing

Verbal Boundary Description

(Describe the boundaries of the property on a continuation sheet.)

Boundary Justification

(Explain why the boundaries were selected on a continuation sheet.)

See item #7, Description Statement

11. Form Prepared By

name/title Nancy L. Todd, National Register Program Assistant
organization Division for Historic Preservation date March 1992
street & number ESP, Agency Building 1 telephone 518-474-0479
city or town Albany state NY zip code 12238-0001

Research documentation and draft nomination prepared by:
Saralinda Hooker, Preservation Consultant
Ontario County Historical Society
Canandaigua, New York 14424

Additional Documentation

Submit the following items with the completed form:

Continuation Sheets

Maps

A **USGS map** (7.5 or 15 minute series) indicating the property's location.

A **Sketch map** for historic districts and properties having large acreage or numerous resources.

Photographs

Representative **black and white photographs** of the property.

Additional items

(check with the SHPO or FPO for any additional items)

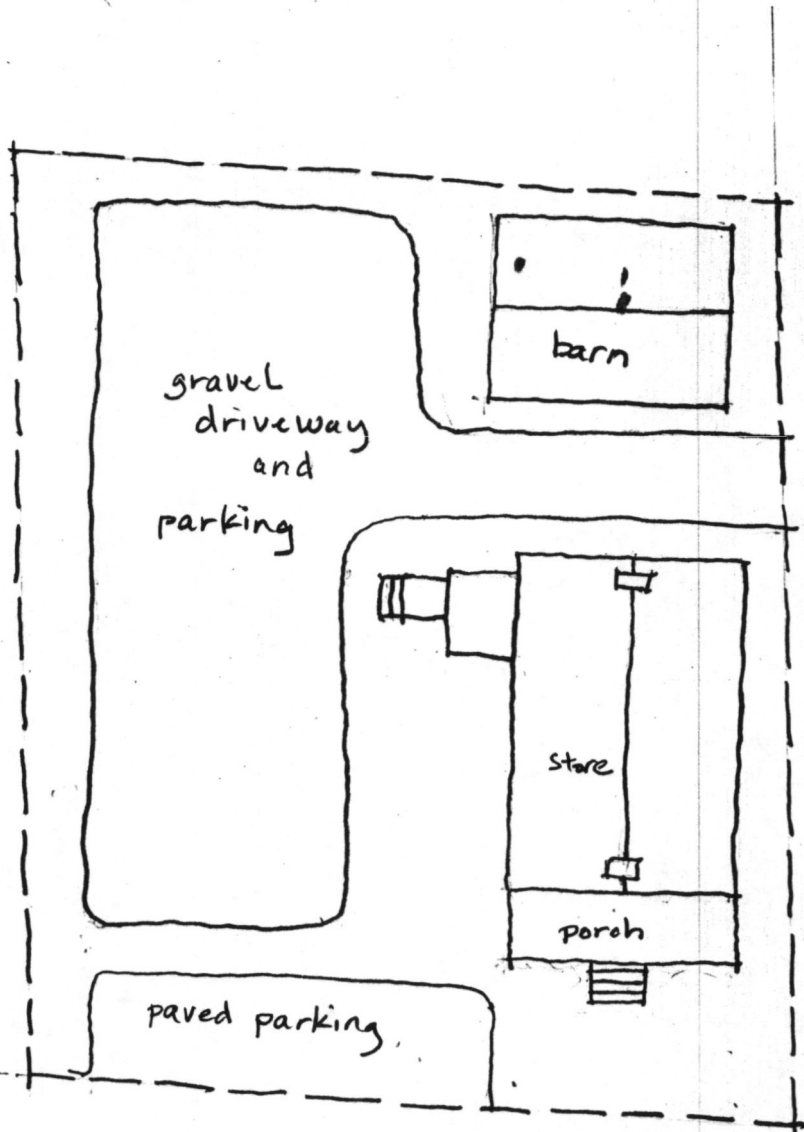
Property Owner

(Complete this item at the request of SHPO or FPO.)

name _____
street & number _____
city or town _____ state _____ zip code _____

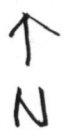
Paperwork Reduction Act Statement: This information is being collected for applications to the National Register of Historic Places to nominate properties for listing or determine eligibility for listing, to list properties, and to amend existing listings. Response to this request is required to obtain a benefit in accordance with the National Historic Preservation Act, as amended (16 U.S.C. 470 et seq.).

Estimated Burden Statement: Public reporting burden for this form is estimated to average 18.1 hours per response including the time for reviewing instructions, gathering and maintaining data, and completing and reviewing the form. Direct comments regarding this burden estimate or any aspect of this form to the Chief, Administrative Services Division, National Park Service, P.O. Box 37127, Washington, DC 20013-7127; and the Office of Management and Budget, Paperwork Reductions Project (1024-0018), Washington, DC 20503.



McMahon Road

Route 96



Felt Cobblestone Store, Victor Ontario County
Sketch Map

1" = 20' ±

United States Department of the Interior
National Park Service

National Register of Historic Places
Continuation Sheet

Section number _____ Page _____

Cobblestone Architecture of New York State MPS

Yates Co. NY

Date Listed

COVER

Substantive Review 5-11-92
AS

- 1. Angus Cobblestone Farmhouse and Barn Complex Substantive Review 5-11-92 AS
- 2. Barden Cobblestone Farmhouse Substantive Review 5-11-92 AS
- 3. Bates Cobblestone Farmhouse Entered in the National Register 5-11-92
- 4. Earl, Jephtha, Cobblestone Farmhouse Entered in the National Register 5-11-92
- 5. Nichols, William, Cobblestone Farmhouse Entered in the National Register 5-11-92
- 6. Spence, Dr. Henry, Cobblestone Farmhouse and Barn Complex Entered in the National Register 5-11-92
- 7. Supplee, Daniel, Cobblestone Farmhouse Entered in the National Register 5-11-92
- 8. Young--Leach Cobblestone Farmhouse and Barn Complex Entered in the National Register 5-11-92

ADDITIONAL DOCUMENTATION TO COVER

Substantive Review

5/22/92

- 9. Cobblestone Railroad Pumphouse Substantive Review 5/22/92
- 10. Felt Cobblestone General Store Entered in the National Register 5/22/92
- 11. First Baptist Church of Phelps Entered in the National Register 5/22/92
- 12. Harmon Cobblestone Farmhouse and Cobblestone Smokehouse 5/22/92

UNITED STATES DEPARTMENT OF THE INTERIOR
NATIONAL PARK SERVICE

NATIONAL REGISTER OF HISTORIC PLACES
EVALUATION/RETURN SHEET

REQUESTED ACTION: NOMINATION

PROPERTY Felt Cobblestone General Store
NAME:

MULTIPLE Cobblestone Architecture of New York State MPS
NAME:

STATE & COUNTY: NEW YORK, Ontario

DATE RECEIVED: 4/17/92 DATE OF PENDING LIST: 5/01/92
DATE OF 16TH DAY: 5/17/92 DATE OF 45TH DAY: 6/01/92
DATE OF WEEKLY LIST:

REFERENCE NUMBER: 92000553

NOMINATOR: STATE

REASONS FOR REVIEW:

APPEAL: N DATA PROBLEM: N LANDSCAPE: N LESS THAN 50 YEARS: N
OTHER: N PDIL: N PERIOD: N PROGRAM UNAPPROVED: N
REQUEST: N SAMPLE: N SLR DRAFT: **N** NATIONAL: N

COMMENT WAIVER: N

ACCEPT RETURN REJECT 5/22/92 DATE

Entered in the
National Register

ABSTRACT/SUMMARY COMMENTS:

RECOM./CRITERIA _____
REVIEWER _____
DISCIPLINE _____
DATE _____

DOCUMENTATION see attached comments Y/N see attached SLR Y **N**

CLASSIFICATION

count resource type

STATE/FEDERAL AGENCY CERTIFICATION

FUNCTION

historic current

DESCRIPTION

architectural classification
 materials
 descriptive text

SIGNIFICANCE

Period Areas of Significance--Check and justify below

Specific dates Builder/Architect
Statement of Significance (in one paragraph)

summary paragraph
 completeness
 clarity
 applicable criteria
 justification of areas checked
 relating significance to the resource
 context
 relationship of integrity to significance
 justification of exception
 other

BIBLIOGRAPHY

GEOGRAPHICAL DATA

acreage verbal boundary description
 UTMs boundary justification

ACCOMPANYING DOCUMENTATION/PRESENTATION

sketch maps USGS maps photographs presentation

OTHER COMMENTS

Questions concerning this nomination may be directed to

_____ Phone _____

Signed _____ Date _____



Historical
Windows

Felt Cobblestone General Store

Victor, Ontario County

Photo: N. Todd, 1992

Neg: OPRHP, Albany

View 1: Front (south) and
west elevations



Felt Cobblestone General store

Victor, Ontario county

Photo: N. Todd, 1992

Neg: OPRP, Albany

View 2: Front (south) and
east elevations



Whimsic
WINDOW

Felt Cobblestone General Store

Victor, NY, Ontario Co

Photo: N. Todd, 1992

Neg: OPRHP, Albany

View 3: Detail, east elevation



Felt Cobblestone General Store
Victor, Ontario County

Photo: S. Hooker, 1991

Neg: Ontario County Historical Society
Canandaigua NY

View 4: East and ^{north}~~south~~ (rear) elevations



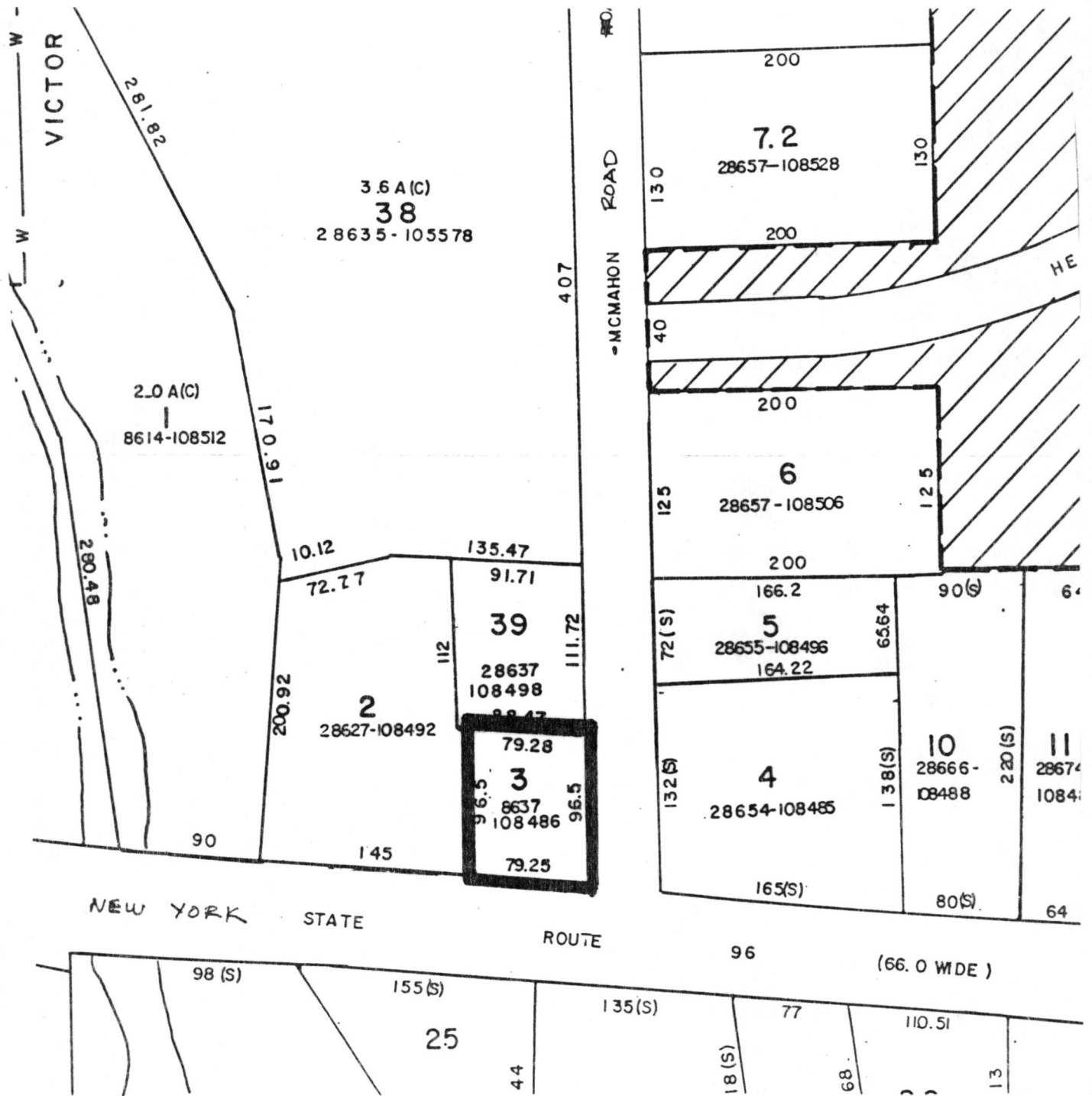
F&T Cobblestone General Store

Victor, Ontario County

Photo: S. Hooker, 1991

NEG: Ontario County Historical Society
Canandaigua NY

View 5: west and ^{north}~~south~~ (near) elevations
of store and non-contributing barn

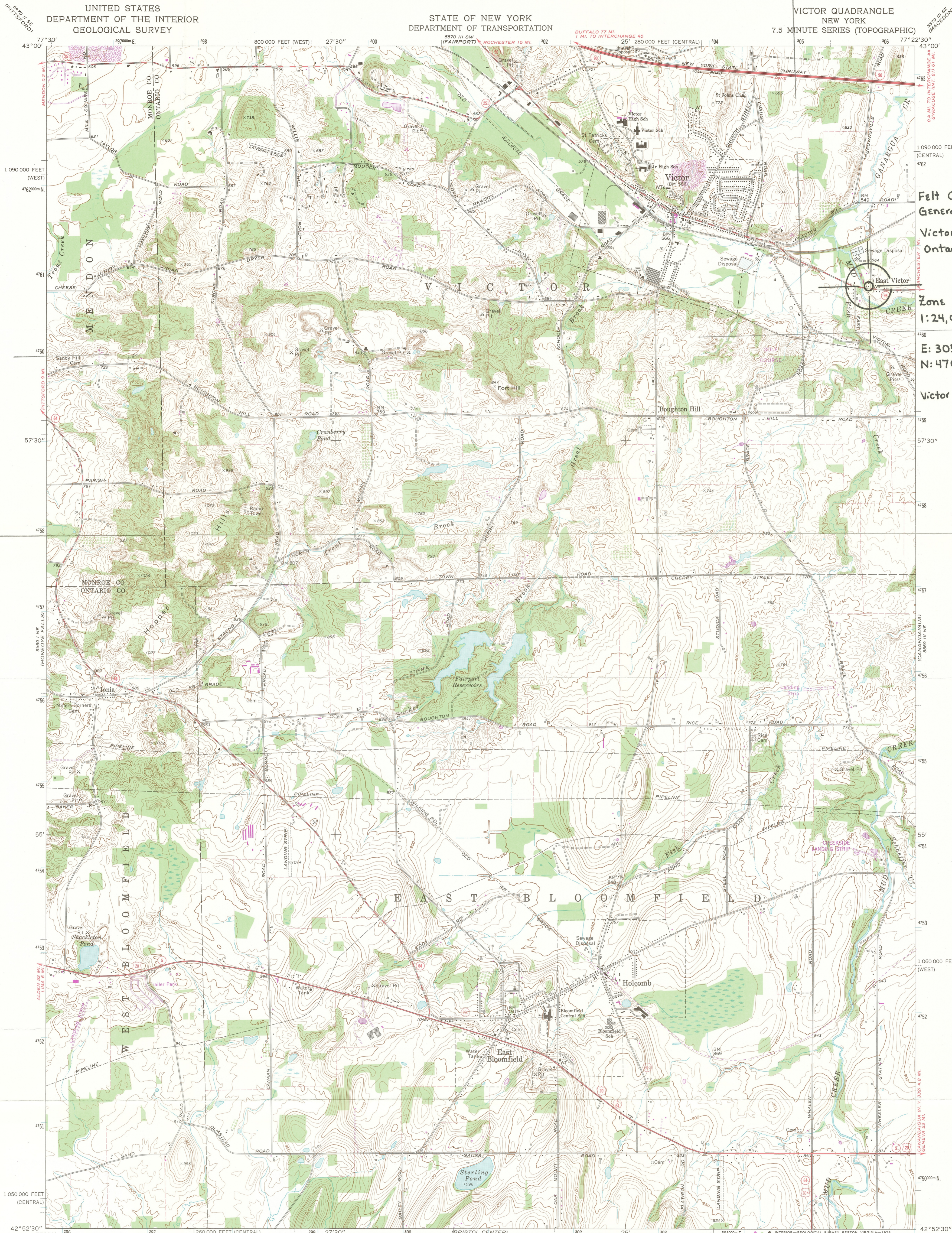


Felt Cobblestone Store, Victor, NY. ↗

Site Map, derived from Town of Victor Tax Map 028.12, Section 1-3

Scale - 1" = 100'

Heavy line delineates property boundary



Felt Cobblestone
General Store
Victor (Town)
Ontario County

Zone 18
1:24,000

E: 305800
N: 4760530

Victor Quad

Mapped, edited, and published by the Geological Survey

Control by USGS and USC&GS

Topography by photogrammetric methods from aerial

photographs taken 1971. Field checked 1971

Supersedes map dated 1951

Projection: New York coordinate system, central zone

(transverse Mercator)

10,000-foot grid ticks based on New York coordinate

system, central and west zones

1000-meter Universal Transverse Mercator grid ticks,

zone 18, shown in blue. 1927 North American datum

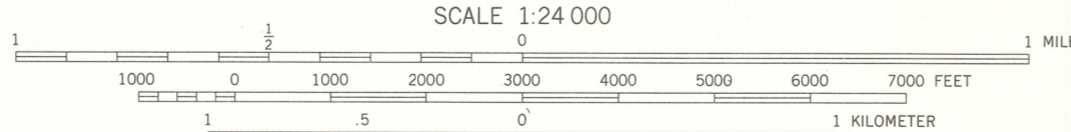
Fine red dashed lines indicate selected fence and field lines where

generally visible on aerial photographs. This information is unchecked

Revisions shown in purple compiled from aerial photographs

taken 1976 and other source data. This information not

field checked. Map edited 1978



CONTOUR INTERVAL 10 FEET
NATIONAL GEODETIC VERTICAL DATUM OF 1929

ROAD CLASSIFICATION	
Primary highway, hard surface	Light-duty road, hard or improved surface
Secondary highway, hard surface	Unimproved road
Interstate Route	U. S. Route
	State Route

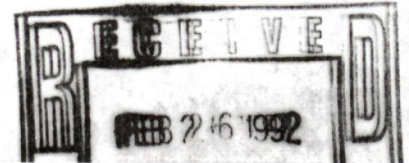


QUADRANGLE LOCATION

THIS MAP COMPLIES WITH NATIONAL MAP ACCURACY STANDARDS
FOR SALE BY U. S. GEOLOGICAL SURVEY, RESTON, VIRGINIA 22092
A FOLDER DESCRIBING TOPOGRAPHIC MAPS AND SYMBOLS IS AVAILABLE ON REQUEST

VICTOR, N. Y.
N4252.5—W7722.5/7.5
1971
PHOTOREVISED 1978
AMS 5569 IV NW—SERIES V821

OFFICE OF THE ONTARIO COUNTY HISTORIAN
3871 COUNTY ROAD #46
CANANDAIGUA, NY 14424
(716) 396-4034



Ms. Nancy Todd
Historic Preservation Field Services Bureau
NYS Office of Parks, Recreation and Historic Preservation
Governor Nelson A. Rockefeller Empire State Plaza
Albany, NY 12238

Dear Ms. Todd:

I am in receipt of your notices of the nomination of the following properties to the State and National Registers of Historic Places:

Felt Cobblestone General Store
6452 Route 96
Victor, NY

Harmon Cobblestone Farmhouse
983 Smith Rd
Phelps, NY

First Baptist Church of Phelps
26 Church St
Phelps, NY

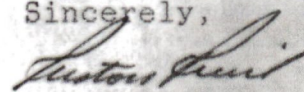
Cobblestone Railroad Pumhouse
County Road #42
Victor, NY

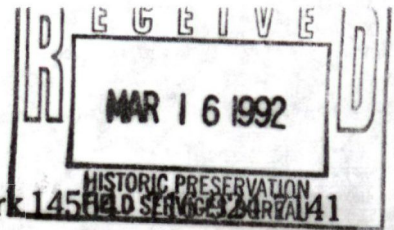
Dist. #7 Cobblestone Schoolhouse
236 High Street Ext.
Victor, NY

I would add the endorsement of this office to the nominations and hope that they would be listed.

As a point of interest, could you tell me who submitted the nomination papers? I am trying to maintain as complete a file as possible on the Register. As part of that file I would like to provide future researchers with a local source of information on the application process including the person or group which submitted the nomination. Any information would be appreciated.

Sincerely,


Preston E. Pierce
County Historian



TOWN OF VICTOR

Town Offices • 85 East Main Street • Victor, New York 14524

TOWN SUPERVISOR
Kenneth R. Wilson

March 12, 1992

DEPUTY SUPERVISOR
James F. Busch

Ms. Nancy Todd
Historic Preservation Field Services Bureau
New York State Office of Parks, Recreation and Historic Preservation
Governor Nelson A. Rockefeller Empire State Plaza
Albany, New York 12238

TOWN CLERK
Alice B. Hunt

TOWN JUSTICES
John J. Dwyer, Jr.
Gary R. Caron

Dear Ms. Todd,

COUNCIL MEMBERS
Charles A. Phillips, Jr.
Mary Joan Snyder
W. Preston Fisher
Gerald W. Barry

The Town of Victor is pleased that the State Review Board of the National and State Registers of Historic Places has nominated The Cobblestone Railroad Pumphouse, the District 7 Cobblestone Schoolhouse, and the Felt Cobblestone General Store to be part of the federal and state governments' official lists of historic properties worthy of preservation.

HIGHWAY SUPERINTENDENT
Robert A. Hendricks

The Cobblestone Railroad Pumphouse, County Road 42, Victor, Ontario County, New York, is unique in that it is reportedly the oldest standing railroad building in New York State and second oldest in the United States.

ASSESSORS
Leo A. Condon
Homer W. Cotton
Richard A. Larson

Two cobblestone privies at the District 7 Cobblestone Schoolhouse, 236 High Street Extension, Victor, Ontario County, New York, make this schoolhouse of historical significance.

TAX COLLECTOR
Mary O'Brien

The distinct architectural features of the cutstone and entablatures of the Felt Cobblestone General Store, 6452 Route 96, Victor, Ontario County, New York, make this structure worthy of recognition.

TOWN HISTORIAN
Babette Huber

Cobblestone structures are unique and indiginous to western New York State. Approximately 800 cobblestones have been identified in the United States. Of those 800, about 100 are in Ontario County, and fifteen of those are in the Town of Victor. The nominations represent the characteristics of cobblestone construction and are a good representative sampling. These and any of the cobblestones nominated should be accepted because of their uniqueness and inability to be replicated. The nominations have been maintained to preserve the integrity of cobblestone masonry and architectural style. They should, therefore, be recognized and be part of the National and State Registers of Historic Places.

Yours truly,
Babette Huber

Babette Huber
Victor Town Historian

xc: Mr. Kenneth R. Wilson, Supervisor
Ms. Jane Luce, Director of Development