

UNITED STATES DEPARTMENT OF THE INTERIOR
 NATIONAL PARK SERVICE
 NATIONAL REGISTER OF HISTORIC PLACES
 REGISTRATION FORM

OMB NO. 1024-0018, NPS FORM

RECEIVED
 OCT 21 1991
 1724

This form is for use in nominating or requesting determinations of eligibility for individual properties or districts. See instructions in Guidelines for Completing National Register Forms (National Register Bulletin 16). Complete each item by marking "x" in the appropriate box or by entering the requested information. If an item does not apply to the property being documented, enter "N/A" for "not applicable." For functions, styles, materials, and areas of significance, enter only the categories and subcategories listed in the instructions. For additional space use continuation sheets. Type all entries.

1. Name of Property

historic name Smith Metropolitan A.M.E. Zion Church
 other names/site number _____

2. Location

street & number Smith and Cottage Streets | | not for publication
 city, town Poughkeepsie | | vicinity
 state New York code 036 county Dutchess code 027 zip code 12601

3. Classification

Ownership of property	Category	Number of resources within property	
<input checked="" type="checkbox"/> private	<input checked="" type="checkbox"/> building(s)	Contributing	Noncontributing
<input type="checkbox"/> public-local	<input type="checkbox"/> district	<u>2</u>	<u>0</u> buildings
<input type="checkbox"/> public-State	<input type="checkbox"/> site	<u>0</u>	<u>0</u> sites
<input type="checkbox"/> public-Federal	<input type="checkbox"/> structure	<u>0</u>	<u>0</u> structures
	<input type="checkbox"/> object	<u>0</u>	<u>0</u> objects
		<u>2</u>	<u>0</u> Total

Name of related multiple property listings: NA Number of contributing resources previously listed in the National Register 0

4. State/Federal Agency Certification

As the designated authority under the National Historic Preservation Act of 1966, as amended, I hereby certify that this nomination request for determination of eligibility meets the documentation standards for registering properties in the National Register of Historic Places and meets the procedural and professional requirements set forth in 36 CFR Part 60. In my opinion, this property meets does not meet the National Register criteria. See continuation sheet.

Julia S. Stepien _____ Date OCT 11, 1991
 Signature of certifying official
 Deputy Commissioner for Historic Preservation
 State or Federal agency and bureau

In my opinion, the property meets does not meet the National Register criteria. See continuation sheet.

Signature of commenting or other official _____ Date _____
 State or federal agency and bureau _____

5. National Park Service Certification

I hereby certify that this property is:
 entered in the National Register.
 See continuation sheet.
 determined eligible for the National Register. see continuation sheet.
 determined not eligible for the National Register.
 removed from the National Register.
 other, (explain:)

Entered in the
 National Register

Melrose Byrum _____ 11/21/91

Signature of keeper _____ Date of Action _____

6. Function or Use

Historic Function

(enter categories from instructions)

RELIGION/religious structureDOMESTIC/single dwelling

Current Functions

(enter categories from instructions)

RELIGION/religious structureDOMESTIC/single dwelling

7. Description

Architectural Classification

enter categories from instructions)

LATE 19TH AND 20TH CENTURY REVIVALS/Late Gothic Revival

Materials(enter categories from instructions)

foundation BRICKwalls BRICK

roof SLATEother

Describe present and historic physical appearance.

Located at the corner of Smith and Cottage Streets in Poughkeepsie, Dutchess County, the Smith Metropolitan A.M.E. Zion Church occupies two lots in a neighborhood of mixed commercial and residential uses characteristic of this part of the city. The site is approximately one acre in size. The church complex is composed of two contributing buildings, the Smith Metropolitan A.M.E. Church (1908-10) and the church parsonage (1914). The church complex is located in the north-central section of the city. The principal elevation of the church faces east, while adjacent to the church to the south is a single-family house. The church and parsonage are not located in a historic district.

The church is a freestanding single-story Gothic style building with a raised basement, completed in 1910. This largely rectangular building contains a number of appended components, including a two-story tower to the north and projecting three and five story bays on the west and south elevations. The main (east) elevation is composed of a largely flat and unarticulated exterior surface punctuated by three pointed-arch stained glass windows with arched hood moldings and stone sills. The larger central window is divided into two sections. Near the apex of the east gable end are three narrow pointed-arch ventilation openings with stone sills. Both the windows and ventilation openings have pointed-arch surrounds of a russet-colored brick laid vertically. The basement level is demarcated on the principal elevation and around the building by a course of vertically laid dark red brick. Also at this level are four recessed windows containing one-over-one sash.

Extending from the principal elevation is an entrance pavilion composed of a pair of brick walls supporting an open-rafter wood truss roof, expressed only at the beginning of the entrance, covered with slate shingles. The vertically laid dark-red brick beltcourse continues along the sides of the pavilion walls. The main elevation also contains corner buttresses placed at an angle. The roof gable is capped with stone coping.

The church tower is connected to the main church building, but set back from the main elevation. The tower is surmounted by a pyramidal roof of slate shingles, the base of which contains the upper portions of the tower's corner piers; these piers are topped by enlarged decorative finials. The slate shingle roof extends below the upper story of the tower to form eaves: this roof is divided into sections by strips of painted metal.

On the first floor of the tower is a recessed pointed-arch doorway, the tympanum of which contains a relief panel. The upper tower contains a pointed-arch louvered aperture divided into two halves with a hood molding and an accompanying band of russet-colored brick trim: this louvered opening rests atop a narrow stone beltcourse. There is also a buttress placed at an angle and located at the southeast corner.

[X] See continuation sheet

United States Department of the Interior
National Park ServiceNATIONAL REGISTER OF HISTORIC PLACES
CONTINUATION SHEETSMITH AME ZION CHURCH
SMITH AND COTTAGE STREETS
POUGHKEEPSIE, DUTCHESS COUNTY
NEW YORK

Section number 7 Page 2

The rear or west elevation of the church is composed of a central three-sided projecting bay with a corbelled brick cornice surmounted by a moderately steep pitched slate shingle roof. The side walls of the bay contain pointed-arch stained glass windows with hood moldings and dark red brick trim. There is another such window on this rear elevation along with a recessed door, the upper part of which is framed by a rectangular hood molding. The upper portion of the elevation gable contains three pointed-arch ventilation apertures; the corner buttresses at the base are set at an angle. All window trim, louvered openings, and roof coping is of a rust-red color. The rear elevation has been altered with the addition of a new door leading to the sanctuary, and with a metal sided enclosure with a screen door serving as an entrance to the basement.

The side (north and south) elevations of the church are divided into four bays by stepped pier buttresses. In each bay is a pointed-arch stained glass window with accompanying hood molding and stone sill, while at the basement level each bay contains a single window containing one-over-one sash with an articulated stone sill and lintel. These sills and lintels, as well as the buttress capping, are made of red sandstone. The uppermost portion of each elevation terminates in a corbelled brick cornice. On the south elevation is a five-sided, polygonal projecting bay topped by a slate-shingle roof above a corbelled brick cornice. The projecting appendage contains one-over-one double-hung stained glass windows with brick lintels, stone sills and squared window heads in alternating bays.

The church's interior is composed of a single, main sanctuary occupying the entire main building block and projecting bays. Enclosed by a wood-truss roof, this assembly space is composed of a main floor with pew seating flanking a center aisle, a rear balcony, and a raised podium and pulpit along with a choir loft at the west end. This apsidal space is connected to the body of the sanctuary by a paired pointed arch portal framed by a strip of dark wood trim. The side wall surfaces of the sanctuary are articulated with a window sill-level strip of dark wood trim, while at the west end of the sanctuary is an upper level strip extending around the pointed arch aperture. There are four paneled doors contained within dark wood pointed frames, leading to the ministers' vestment rooms.

The ceiling of the sanctuary is composed of large framed square panels of diagonally-laid strips of dark wood. Spanning the ceiling surface is perhaps the most striking feature of the sanctuary, the exposed truss framing of the church roof. The dark wood diagonal strips also sheathe the under surface of the balcony, which is highlighted by a number of carved wood pendants located near the edge of the balcony. The sanctuary has been altered with the addition of hanging circular light fixtures and wall sconces (both added circa 1952), and ceiling fans (1982).

United States Department of the Interior
National Park Service

NATIONAL REGISTER OF HISTORIC PLACES
CONTINUATION SHEET

SMITH AME ZION CHURCH
SMITH AND COTTAGE STREETS
POUGHKEEPSIE, DUTCHESS COUNTY
NEW YORK

Section number 7 Page 3

The balcony is supported by a large wood beam resting on cast-iron pipe columns. Access to the balcony is provided by a staircase located in the southeast corner of the interior adjacent to the main entrance doors. Another component of the church's interior space is the vestibule connected to the entrance at the base of the tower. There is also a basement housing a kitchen, social room, and two small meeting rooms entered by way of paneled pocket doors: this basement has been altered with the addition of a concrete floor and linoleum (circa 1948), and acoustic ceiling paneling with fluorescent lighting.

The other contributing building located on the site is the parsonage, a two-story brick dwelling with a hipped asphalt shingle roof built in 1914. The dwelling contains a central dormer window, full-width porch, and one-over-one windows with decorative upper sash. Constructed of red-brick laid in English/Common bond juxtaposed with a continuous row of headers in a four-to-one relationship, the house has a second floor containing two pairs of one-over-one windows with decorative upper sash: this treatment of the muntins also appears in the first floor and attic windows. The parsonage retains a high degree of interior and exterior design integrity.

United States Department of the Interior
National Park ServiceNATIONAL REGISTER OF HISTORIC PLACES
CONTINUATION SHEETSMITH AME ZION CHURCH
SMITH AND COTTAGE STREETS
POUGHKEEPSIE, DUTCHESS COUNTY
NEW YORK

Section number 8 Page 2

town, "Long Row" became another center for the Black population during the 1840s and 1850s. A third settlement area was the neighborhood located along Catharine, Cottage, and Pine Streets. After its incorporation in 1854, Poughkeepsie experienced one of its greatest expansion periods throughout the Civil War and postwar periods. During its most intense period of development from the 1860s to the 1880s, Poughkeepsie's Black community grew rapidly, and by 1870 had a population of more than 500.(3)

Established in 1836, the African M.E. Zion Church in Poughkeepsie was founded fourteen years after the African Methodist Episcopal denomination was created in 1822: the first church service was held on November 12, 1837 at the Old Lancaster Schoolhouse on Church Street. The A.M.E. denomination expanded rapidly within New York State during the nineteenth century, organizing Black churches along the path of the underground railroad and transportation routes up the Hudson River Valley and northward into Canada. The A.M.E. Zion church was established by persons who formerly belonged to the first Methodist Episcopal Church of Poughkeepsie, which at one time had fifty-eight African American members.(4) The first permanent home of the African M.E. Zion Church was built in 1840 on Catherine Street between Mansion Street and Cottage Place. In 1862 a second church was constructed on the same site, and it was at this location that several important events took place, including a historic statewide convention of African Americans that convened on July 16th & 17th, 1863. The delegates to this convention drafted a resolution at the African M.E. Zion Church declaring that Blacks in New York were loyal to the Union and deserved the right to bear arms in order to end slavery: this activity reflected the example of the A.M.E. Zion Church as the best illustration of the close linkage between slavery and abolitionism among Black people.(5) In response to this meeting, a group of white residents threatened to riot and destroy the church in anger over having to possibly be drafted to fight in the Civil War. Faced with the danger of having the Catherine Street church building destroyed, the male members of A.M.E. Zion patrolled the area around the church with firearms. However, they were unable to control the mob of draft rioters, thus requiring the intervention of the governor who asked for assistance from the Vermont Volunteers.(6)

The congregation grew in membership during the post-Civil War decades, and in 1891 made plans to remodel the Catherine Street church. However, because of the need for additional space, the congregation eventually sold its Catherine Street building and purchased property for a new church at the nearby corner of Smith and Cottage Streets for \$700.(7) In 1894, before moving from its Catherine Street location, the church served as the venue for the 73rd Session of the New York Annual Conference of the A.M.E. Zion Church. During this meeting, a landmark event took place in which Mrs. A.J. Foote became the first woman deacon of any race to be ordained in any Methodist denomination.(8) In 1900, the church received a generous donation from William W. Smith, permitting

United States Department of the Interior
National Park ServiceNATIONAL REGISTER OF HISTORIC PLACES
CONTINUATION SHEETSMITH AME ZION CHURCH
SMITH AND COTTAGE STREETS
POUGHKEEPSIE, DUTCHESS COUNTY
NEW YORK

Section number 8 Page 3

the construction of a new church building on the lot at the corner of Cottage and Smith streets, where a small ironworks once existed. Smith, a co-founder of the Smith Brothers Cough Syrup Company and perhaps the most prominent and active philanthropist in Poughkeepsie and the Mid-Hudson Valley region, also presented the church with an endowment of seven hundred dollars.(9) The new church of the A.M.E. Zion congregation, designed by Poughkeepsie architect DuBois Carpenter, was built in 1910, and a parsonage was later constructed in 1914 on a lot to the rear of the church.

It was during the twentieth century that the Smith Metropolitan A.M.E. Zion Church established itself, aside from its religious function, as a major benevolent and social service institution in the Black community. As a church serving the Black community of Poughkeepsie, it performed the historic duties and activities traditionally associated with the African-American community church. The new church became a key institution in the Black community of Poughkeepsie throughout the early twentieth century. It served as its principal center of social and political activity, while functioning as a social service agency and a vehicle for political leadership among African-Americans. Through the efforts of such individuals as Bessie Payne and her mother, Mrs. Mary M.W. Harden, who established a highly successful program for the unemployed during the Great Depression, the church educated and found employment for its members, while offering and reaffirming human dignity and status to those individuals of a lower occupational level. As an example of the church's secular leadership, the Smith A.M.E. Zion Church encouraged its members at one point to put a downpayment "no matter how small" on an individually purchased piece of property. This gesture was intended to create a sense of ownership and enable future church congregations to more easily obtain a church charter. Property ownership was regarded as a clear indication that the prospective congregation had an adequate financial base for supporting and maintaining an affiliation with the African Methodist Episcopal church.(10)

The church membership also included an active group of distinguished parishioners. Among them were Gaius Bolin and his daughter, Jane. The elder Bolin was the first African-American graduate of Williams College, graduating in 1889, and after establishing his own law practice in 1895, became the first Black attorney to be appointed president of the Dutchess County Bar Association in 1945.(11) Jane Matilda Bolin, a 1928 graduate of Wellesley College earned a law degree from Yale in 1931, and in 1939 was appointed by New York City mayor Fiorello H. LaGuardia to a ten-year term as judge of the Family Court, making her the first Black female judge in the United States.(12) Additional members active in the Smith Metropolitan A.M.E. Zion Church have included Garrett A.H. Price, the first African-American medical doctor to establish a practice in Poughkeepsie, and Robert Wilfred Morgan, the first Black dentist to practice in the city.(13) As prominent men and women of leadership and accomplishment in the Black community, these church members reflect the

United States Department of the Interior
National Park ServiceNATIONAL REGISTER OF HISTORIC PLACES
CONTINUATION SHEETSMITH AME ZION CHURCH
SMITH AND COTTAGE STREETS
POUGHKEEPSIE, DUTCHESS COUNTY
NEW YORK

Section number 8 Page 4

importance of the Smith Metropolitan A.M.E. Church for the African-American community in Poughkeepsie.

The Smith Metropolitan A.M.E. Zion Church is also architecturally significant. The pronounced simplicity of the church building, as reflected in its single mass topped by a gable roof, facade and elevation treatments, and the design of its adjoining tower, reflects an important change that occurred in the design of nineteenth century Protestant community churches. Beginning in the mid-Nineteenth century, the American Ecclesiologists, taking their cue from their English counterparts, initiated an effort to establish uniform standards in the design of rural and small town churches. This effort was a response to the perception that these churches had become such diverse, even eclectic architectural expressions, that their lack of cohesive design projected an obfuscated image of the Protestant faith.

The Smith A.M.E. Zion church represents the urban variant, containing overtones of eclecticism, of the Ecclesiologist model as based on the prototype of the Medieval English parish church. The church building incorporates the principal features of the Ecclesiological church type such as a simple plan and massing, pitched slate roof, lancet windows, and buttressed brick walls enclosing a scissor-truss roof framing system into its design, but in place of the bell cote at the apex of the facade gable is a distinctive corner bell tower. The church building has also introduced a number of changes based on the programmatic requirements of the A.M.E. denomination. Unlike the typical Ecclesiological church and its thirteenth century rural English parish precedent, the Smith A.M.E. Zion Church contains an apse which serves as both a pulpit and choir loft, and includes an attached polygonal bay on its south elevation. However, the church does express a major Ecclesiologist quality, the emphasis placed on craft, which is reflected in the attention to the church's exterior architectural detail and the richness of the interior design of the sanctuary. The church interior, with its ceiling and balcony panelling, wall, door, and window trim, and scissor-truss roof framing, all of varnished and natural finish wood, is well-executed and completely intact, contributing to the architectural significance of the building.

Overall, this Gothic Revival church with Victorian design accents, constructed largely of red brick laid in English bond with decorative stone and brick trim, projects the image of an eclectic revival vernacular church. The textures and colors produced by the building's materials and decorative elements evoke the High Victorian esthetic associated with such architects as William Butterfield in England and (William Robert) Ware & Van Brunt in America, who were active from the 1870's to the 1890's. Even more significantly, the church is an expression and example of the kind of church design promoted by Richard Upjohn in his 1852 book Rural Architecture. Upjohn's treatise proposed buildings of a simple mass and plan composed of a single block

United States Department of the Interior
National Park ServiceNATIONAL REGISTER OF HISTORIC PLACES
CONTINUATION SHEETSMITH AME ZION CHURCH
SMITH AND COTTAGE STREETS
POUGHKEEPSIE, DUTCHESS COUNTY
NEW YORK

Section number 8 Page 5

articulated with lancet windows, and corner and side buttressing topped by steeply-pitched slate covered roofs: connected to the main building was a bell tower.

Another important characteristic of the church is its status of a landmark in the working class neighborhood in which it is located. It achieves this quality by virtue of its strong architectural presence: an attribute largely derived from the clarity of design expression and articulation of the main building block and its equally impressive bell tower.

In all, the Smith Metropolitan A.M.E. Zion Church has served as a highly significant social and religious institution in the African-American community of Poughkeepsie. In terms of its function in the history and development of the local Black community, the church has maintained a dynamic role as a provider of employment assistance, education, and support and as the setting for important events. The building is also significant as an expression of an important development in the conception and design of the small town or city Protestant church during the early twentieth century.

FOOTNOTES:

1. Lawrence H. Mamiya and Patricia A. Kaurouma, "You Never Hear About Their Struggles: Black Oral History in Poughkeepsie, NY," p. 57. Mamiya and Kaurouma have consulted Edmund Platt's History of Poughkeepsie 1683 to 1905 and Donald L. Robinson's Slavery in the Structure of American Politics 1765-1820 in their study of the early history of Blacks in Poughkeepsie.

2. Ibid.

3. Mamiya and Kaurouma, p. 58. Their research on Black migration in the Mid-Hudson Valley incorporated a Vassar College senior thesis by Denise Love Johnson entitled "Black Migration Patterns: A Case Study of the Origin & Development of the Black Population of Poughkeepsie, NY."

4. James H. Smith, History of Dutchess County, New York, Vol. 2, pp. 426-27. Information regarding the establishment of A.M.E. churches in New York State comes from Mamiya and Lorraine M. Roberts' article, "Invisible People, Untold Stories: A Historical Overview of the Black Community in Poughkeepsie" in Afro-Americans in New York Life and History, April, 1988, p. 79.

5. A.J. Williams-Myers, "The Arduous Journey: The African American Presence in the Hudson-Mohawk Region," p. 33.

6. Ibid., p. 37.

United States Department of the Interior
National Park ServiceNATIONAL REGISTER OF HISTORIC PLACES
CONTINUATION SHEETSMITH AME ZION CHURCH
SMITH AND COTTAGE STREETS
POUGHKEEPSIE, DUTCHESS COUNTY
NEW YORK

Section number 8 Page 6

-
7. "Of Unwavering Faith of Pastors and Members" by Fox Holden, Jr. in The Poughkeepsie Journal, 1937.
 8. Mamiya and Roberts, "Invisible People, Untold Stories: A Historical Overview of the Black Community in Poughkeepsie," April, 1988, p. 85.
 9. Holden, "Of Unwavering Faith of Pastors and Members."
 10. Mamiya and Kaurouma, pp. 64-65. The authors quote from C. Eric Lincoln's "Forward" to Gayraud S. Wilmore's Black Religion and Black Radicalism (1973).
 11. Mamiya and Roberts, "Invisible People: Untold Stories," pp. 83-84.
 12. Ibid., p. 83.
 13. Interview with Walter M. Patrice, June 7, 1991. Mr. Patrice is the church historian of the Smith Metropolitan A.M.E. Zion congregation. This information regarding these members of the church also appears in Mamiya and Roberts, "Invisible People: Untold Stories."

United States Department of the Interior
National Park Service

NATIONAL REGISTER OF HISTORIC PLACES
CONTINUATION SHEET

SMITH AME ZION CHURCH
SMITH AND COTTAGE STREETS
POUGHKEEPSIE, DUTCHESS COUNTY
NEW YORK

Section number 9 Page 2

Major Bibliographical References (cont'd):

Mamiya, L.H. and P. A. Kaurouma. "You Never Hear About Their Struggles: Black Oral History in Poughkeepsie, N.Y." Afro-Americans in New York Life and History, July, 1980, Vol. 4, No. 2; pp. 55-70.

Mamiya, L.H. and L.M. Robert. "Invisible People, Untold Stories: A Historical Overview of the Black Community in Poughkeepsie." Afro-Americans in New York Life and History, April, 1988, Vol. 12, No. 4; pp. 76-104.

Platt, Edmund. Eagle's History of Poughkeepsie from the Earliest Settlements, 1683 to 1905. Poughkeepsie, NY: Platt & Platt, 1905.

Smith, James H. History of Dutchess County, New York. Vol. II. Syracuse, NY: D. Mason & Co., 1882.

Williams-Myers, A.J. "The Arduous Journey: The African American Presence in the Hudson-Mohawk Region." The African American Presence in New York State History edited by Monroe Fordham. Albany, New York: The State University of New York, 1989.

United States Department of the Interior
National Park Service

NATIONAL REGISTER OF HISTORIC PLACES
CONTINUATION SHEET

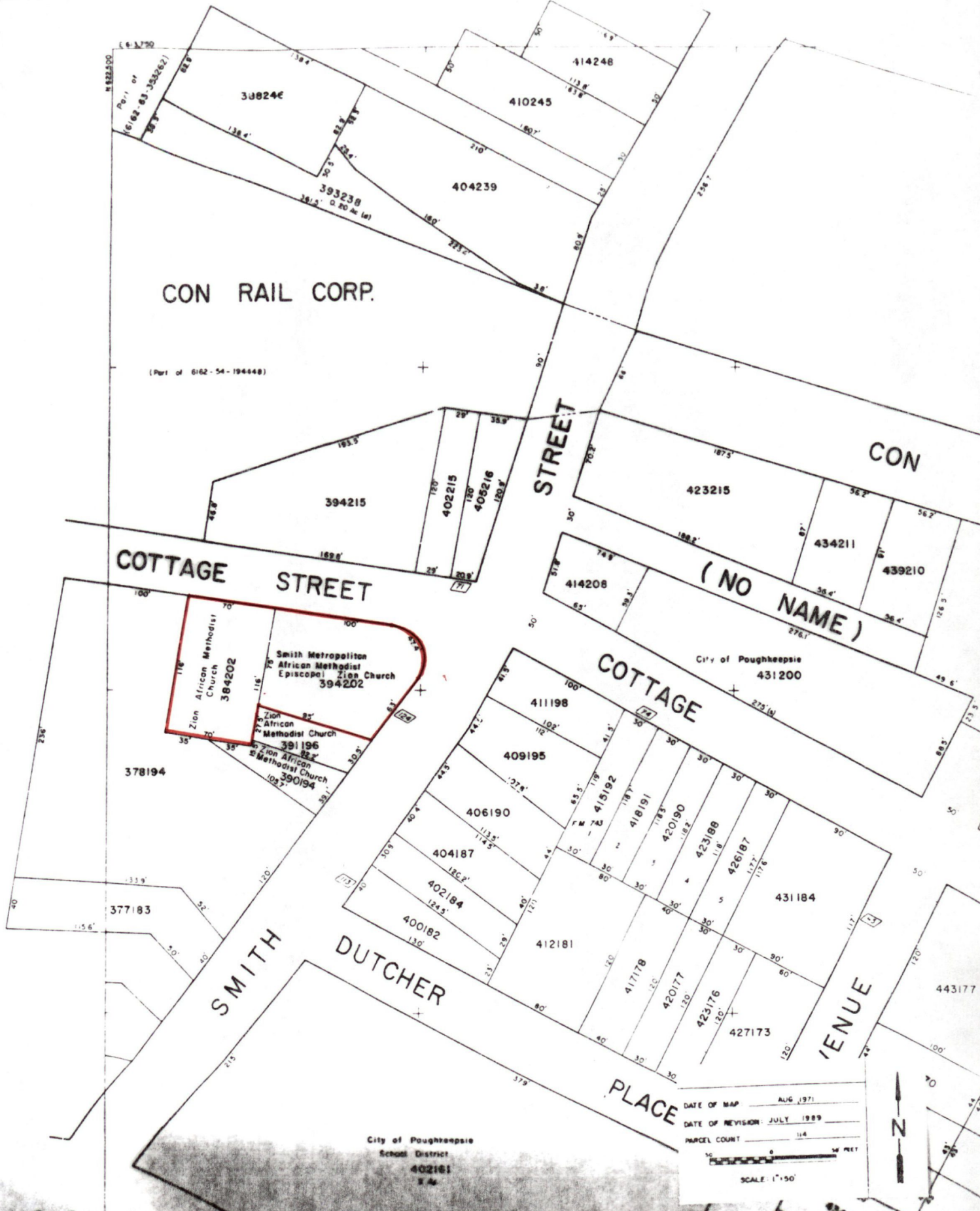
SMITH AME ZION CHURCH
SMITH AND COTTAGE STREETS
POUGHKEEPSIE, DUTCHESS COUNTY
NEW YORK

Section number 11 Page 2

Research and Documentation Prepared by:

Jeffrey Baumuel, intern
New York State Historic Preservation Office
Agency Building 1
Empire State Plaza
Albany, New York 12238

Smith Metropolitan A.M.E. Zion Church
 Smith and Cottage Streets, Poughkeepsie
 Dutchess County, New York



DATE OF MAP AUG 1971
 DATE OF REVISION JULY 1989
 PARCEL COUNT 114
 SCALE 1"=50'

City of Poughkeepsie
 School District
 402181
 S 4



Smith Metropolitan A.M.E. Zion Church
Smith and Cottage Streets, Poughkeepsie
Dutchess County, New York

USGS 7.5' Poughkeepsie Quadrangle
UTM Coordinates: 18 590180 4617540
Scale- 1:24000

UNITED STATES DEPARTMENT OF THE INTERIOR
NATIONAL PARK SERVICE

NATIONAL REGISTER OF HISTORIC PLACES
EVALUATION/RETURN SHEET

REQUESTED ACTION: NOMINATION

PROPERTY NAME: Smith Metropolitan AME Zion Church

MULTIPLE NAME:

STATE & COUNTY: NEW YORK, Dutchess

DATE RECEIVED: 10/21/91 DATE OF PENDING LIST: 11/05/91
DATE OF 16TH DAY: 11/21/91 DATE OF 45TH DAY: 12/05/91
DATE OF WEEKLY LIST:

REFERENCE NUMBER: 91001724

NOMINATOR: STATE

REASONS FOR REVIEW:

APPEAL: N DATA PROBLEM: N LANDSCAPE: N LESS THAN 50 YEARS: N
OTHER: N PDIL: N PERIOD: N PROGRAM UNAPPROVED: N
REQUEST: N SAMPLE: N SLR DRAFT: N NATIONAL: N

COMMENT WAIVER: N

ACCEPT RETURN REJECT 11/21/91 DATE

Entered in the
National Register

ABSTRACT/SUMMARY COMMENTS:

RECOM./CRITERIA _____
REVIEWER _____
DISCIPLINE _____
DATE _____

DOCUMENTATION see attached comments Y/N see attached SLR Y/N

CLASSIFICATION

___count ___resource type

STATE/FEDERAL AGENCY CERTIFICATION

FUNCTION

___historic ___current

DESCRIPTION

___architectural classification
___materials
___descriptive text

SIGNIFICANCE

Period Areas of Significance--Check and justify below

Specific dates Builder/Architect
Statement of Significance (in one paragraph)

___summary paragraph
___completeness
___clarity
___applicable criteria
___justification of areas checked
___relating significance to the resource
___context
___relationship of integrity to significance
___justification of exception
___other

BIBLIOGRAPHY

GEOGRAPHICAL DATA

___acreage ___verbal boundary description
___UTMs ___boundary justification

ACCOMPANYING DOCUMENTATION/PRESENTATION

___sketch maps ___USGS maps ___photographs ___presentation

OTHER COMMENTS

Questions concerning this nomination may be directed to

Phone

Signed Date



Smith Metropolitan AME Zion
Church

Smith and Cottage Streets,
Poughkeepsie Dutchess Co.
New York

Photo by: W. Patrice 1990

Neg: OPRHP, Albany

Photo No. 1: Front Facade
View from the East.



Smith Metropolitan AME Zion Church
Smith and Cottage Streets, Poughkeepsie
Dutchess County, New York

Photo by: W. Patrice, 1990

Neg: OPRHP, Albany

Photo NO. 2: Side (South) Elevation.



Smith Metropolitan AME Zion Church
Smith and Cottage Streets, Poughkeepsie
Dutchess County, New York

Photo by: W. Patrice, 1990

Neg: OPRHP, Albany

Photo NO. 3: Side (North) Elevation.



Smith Metropolitan AME Zion Church
Smith and Cottage Streets, Poughkeepsie
Dutchess County, New York

Photo by: W. Patrice, 1990

Neg: OPRHP, Albany

Photo NO. 4: Rear (west) Elevation.



Smith Metropolitan AME Zion Church
Smith and Cottage Streets, Poughkeepsie
Dutchess County, New York

Photo by: W. Petrice, 1990

Neg: OPRHP, Albany

Photo NO. 5: Interior, Sanctuary.



Smith Metropolitan AME Zion Church
Smith and Cottage Streets, Poughkeepsie
Dutchess County, New York

Photo by: W. Patrice, 1990

Neg: OPRHP, Albany

Photo No. 6: Interior, Sanctuary.



Smith Metropolitan AME Zion Church
Smith and Cottage Streets, Poughkeepsie
Dutchess County, New York

Photo by: W. Patrice, 1990

Neg: OPRHP, Albany

Photo No. 7: Parsonage



NEW YORK STATE
DEPARTMENT OF TRANSPORTATION

POUGHKEEPSIE QUADRANGLE
NEW YORK
7.5 MINUTE SERIES



SMITH METROPOLITAN
AME ZION CHURCH
SMITH AND COTTAGE STREETS
CITY OF POUGHKEEPSIE
DUTCHESS COUNTY, NEW YORK

USGS 7.5' POUGHKEEPSIE
QUADRANGLE

SCALE-1:24000

USCS COORDINATES:
18 E590180 N4617540

Published in 1989 by the New York State Department of Transportation, in cooperation with the U.S. Department of Transportation, Federal Highway Administration.

Map base from 1957 U.S. Geological Survey 7.5-minute quadrangle.

Map revisions made using aerial photography dated 1988, construction plans, official records and other sources. Features revised include: highways and other transportation facilities; civil boundaries; recreation sites; hydrography; and buildings. Gray tint indicates developed areas in which only landmark buildings are shown. Darker gray tint indicates open water features.

Revisions may not comply with National Map Accuracy Standards.

Correspondence concerning this and other maps of the Department of Transportation should be directed to: Map Information Unit, New York State Department of Transportation, State Campus, Albany, New York 12232.

Revisions by C.H. Lamb



SCALE 1:24 000

1 000 2 000 3 000 4 000 5 000 6 000 7 000 FEET

1 0 2 3 4 5 6 7 KILOMETER

Polyconic projection, 1927 North American datum.

1000-meter ticks based on the New York Transverse Mercator grid. Between 72° and 78° West Longitude, this grid is identical to Zone 18 of the Universal Transverse Mercator grid. Areas east of 72° and west of 78° are direct mathematical extensions of Zone 18.

10,000-foot ticks based on the New York State Plane Coordinate System, East Zone.

Magnetic declination for 1989 is approximately 13.5° West

Contours at 10-foot intervals, shown unrevised from 1957 U.S. Geological Survey map. Datum is mean sea level.

INDEX TO
1:8600 (1"=800')
MAP COVERAGE

POUGHKEEPSIE (north)	POUGHKEEPSIE (south)
----------------------	----------------------

BOUNDARIES:
State
County
Town or City
Incorporated Village

ROADS:
Touring Route Markers:
Interstate
U.S.
State
County
Interchange number

Divided:
Wide mall
Narrow mall or barrier

Undivided:
4 or more lanes
Less than 4 lanes

Vehicle track; trail

THE COUNTY OF DUTCHESS

Bob Kuhn

ROBERT W. ARLEY, JR.
COUNTY CLERK
EMIL W. GALLER, JR.
ASSISTANT COMMISSIONER

TELEPHONE (914) 485-6000
FAX (914) 485-9691

SEP 20 1991

To: Larry Gobrecht,
Bob Kuhn,
Historic Preservation Field Services Bureau

From: John Clarke, Senior Planner *JCF*

Date: September 20, 1991

Re: National and State Register Nominations for
Dutchess County

Our office has received notices that the following properties are being considered by the State Review Board at its next meeting:

- ~~X~~ 1. Smith Metropolitan A.M.E. Zion Church, Poughkeepsie
- 2. Bykenhulle, Hopewell Junction
- 3. Akin Free Library, Pawling
- 4. Bloomdale Historic District, Pleasant Valley
- 5. Halcyon Hall, Millbrook

Our department is aware of the historic significance of all five of these sites. I will not take the time to repeat the arguments in the nomination documentation. The Planning Department would like to simply state our strong support for these nominations. Too much of our historic heritage is threatened by neglect and insensitive development decisions. National Register listings will confer justified recognition of these historic properties and offer some measure of long-term protection.

Thank you for your continued interest in Dutchess County's history.