

UNITED STATES DEPARTMENT OF THE INTERIOR
NATIONAL PARK SERVICE
NATIONAL REGISTER OF HISTORIC PLACES
REGISTRATION FORM

OMB NO. 1024-0018, NPS FORM

2022
OCT 17 1989

This form is for use in nominating or requesting determinations of eligibility for individual properties or districts. See instructions in Guidelines for Completing National Register Forms (National Register Bulletin 16). Complete each item by marking "x" in the appropriate box or by entering the requested information. If an item does not apply to the property being documented, enter "N/A" for "not applicable." For functions, styles, materials, and areas of significance, enter only the categories and subcategories listed in the instructions. For additional space use continuation sheets. Type all entries.

1. Name of Property

historic name NATHANIEL LONGBOTHAM HOUSE
other names/site number _____

2. Location

street & number 1541 STONY BROOK ROAD | | not for publication
city, town STONY BROOK | | vicinity
state NEW YORK code 036 county SUFFOLK code 103 zip code 11790

3. Classification

Ownership of property	Category	Number of resources within property	
		Contributing	Noncontributing
<input checked="" type="checkbox"/> private	<input checked="" type="checkbox"/> building(s)	<u>2</u>	<u>0</u> buildings
<input type="checkbox"/> public-local	<input type="checkbox"/> district	<u>0</u>	<u>0</u> sites
<input type="checkbox"/> public-State	<input type="checkbox"/> site	<u>1</u>	<u>0</u> structures
<input type="checkbox"/> public-Federal	<input type="checkbox"/> structure	<u>0</u>	<u>0</u> objects
	<input type="checkbox"/> object	<u>3</u>	<u>0</u> Total

Name of related multiple property listings: NA Number of contributing resources previously listed in the National Register 0

4. State/Federal Agency Certification

As the designated authority under the National Historic Preservation Act of 1966, as amended, I hereby certify that this nomination request for determination of eligibility meets the documentation standards for registering properties in the National Register of Historic Places and meets the procedural and professional requirements set forth in 36 CFR Part 60. In my opinion, this property meets does not meet the National Register criteria. See continuation sheet.

[Signature]
Signature of certifying official
Deputy Commissioner for Historic Preservation
State or Federal agency and bureau

8/24/89
Date

In my opinion, the property meets does not meet the National Register criteria. See continuation sheet.

Signature of commenting or other official _____
State or federal agency and bureau _____

_____ Date

5. National Park Service Certification

I hereby certify that this property is:
 entered in the National Register.
 See continuation sheet.
 determined eligible for the National Register. see continuation sheet.
 determined not eligible for the National Register.
 removed from the National Register.
 other, (explain:)

Entered in the
National Register

[Signature] 11/16/89

[Signature] Signature of keeper Date of Action

6. Function or Use

Historic Function
(enter categories from instructions)
DOMESTIC/single dwelling

Current Functions
(enter categories from instructions)
DOMESTIC/single dwelling

7. Description

Architectural Classification
(enter categories from instructions)
COLONIAL

Materials(enter categories from instructions)
foundation STONE
walls WOOD
roof ASPHALT
other _____

Describe present and historic physical appearance.

The Nathaniel Longbotham House is situated on the extreme western edge of the unincorporated hamlet of Stony Brook in the northwest corner of Brookhaven Township, Suffolk County, New York (Map 1). The nominated property consists of a triangular .12-acre parcel containing the dwelling house, an early nineteenth century shed, and a late seventeenth or early eighteenth century well (Map 2). The resources, including two contributing buildings and one contributing structure, all enhance the historic significance of the property. The boundary of the nominated parcel is drawn to coincide with the legal lot lines of the property. The small parcel of land is all that remains associated with the house from what was once a 150-acre farm. Most of the original farm was upland which now belongs to the State University at Stony Brook. [1]

East and west of the parcel are other homes in a residential setting. One, the Hawkins-Mount House, is a National Historic Landmark. A second property, contiguous to the nominated resource, is a vernacular cottage built in 1937 by the owner of the Longbotham house. To the north are two undeveloped hillside acres and to the south is a parcel of several hundred acres, much of which is picturesque and unimproved. Roads as old as the house define two sides of the triangular parcel, which is nestled in a gully between two glacial hills. The house is a private residence that has been professionally restored. The work has focused on stabilization and conservation of original fabric. The possibility of transferring the house to a nonprofit organization is being explored, since the house is felt to have greater value as a public educational tool than as a private dwelling place.

The Longbotham house is part of an unusually intact context of local historic buildings. Other significant buildings, located along a three-quarter mile stretch of Stony Brook Road and Main Street beginning with the Longbotham house, include the Charles Seabury House (ca. 1800, English framing); the Hawkins-Mount House (ca. 1750/1770/1785, Anglo-Dutch framing), home of painters William Sydney and Shepherd Mount; the Jedediah Williamson House (ca. 1790); the Museums at Stony Brook, whose collections include many works of the Mount painters; the Country House Restaurant (circa 1730, Anglo-Dutch); the Joseph Smith Hawkins House (ca. 1790, English); the Baylis/Hawkins House (ca. 1790, English); the Stony Brook Grist Mill, a rare and important example of anchorbalk framing (ca. 1750, Dutch); the Stony Brook Church (ca. 1880), a striking shingle-sided structure designed by Stanford White; the Three Village Inn (ca. 1750, Anglo-Dutch); and the Stony Brook Shopping Center, built by Ward Melville in the 1940's as an example of historically sensitive contemporary construction. The intervening buildings consist of predominantly nineteenth-century vernacular residential architecture. The area may have historic district potential. It is hoped that the nomination of the Nathaniel Longbotham house will foster local interest in conducting a comprehensive survey and multiple property submission for the village of Stony Brook.

United States Department of the Interior
National Park ServiceNATIONAL REGISTER OF HISTORIC PLACES
CONTINUATION SHEETNATHANIEL LONGBOTHAM HOUSE
STONY BROOK ROAD, STONY BROOK
SUFFOLK COUNTY, NEW YORK

Section number 7 Page 2

GENERAL DESCRIPTION:

The Longbotham house comprises three visually and physically distinct in-line sections that are joined gable-to-gable and diminish in height from east to west. The largest and easternmost was built before 1746, which is the first documented date of its existence. It was probably constructed between 1735 and 1745, based on architectural evidence. It is a post, beam, and stud-wall-framed, story-and-a-half half-house that is 20 feet long and 26 feet deep. The smaller one-story middle section of the house was built between 1660 and 1746 and is also of post, beam, and stud-wall construction. It is 22 feet long and 16 feet deep. Once a freestanding cottage, it was joined to the half-house in the early eighteenth century when the half-house was built. It served as a kitchen at that time and continues as such today. The smallest, westernmost section of the house is a one-car garage built in 1952. This non-historic wood frame appendage was designed to harmonize with the house and it was added without disturbing the original fabric of the adjacent cottage.

EXTERIOR ARCHITECTURAL FEATURES:

Half-House: The half-house is arranged in three north-south bents (Figure 1). The first and second bents at the east end of the house define a chimney bay which, in south elevation, contains the front door. The door is a butt-hinged early nineteenth century replacement of the original, whose empty pintle holes remain in the east jamb stud. The second and third bents define a parlor bay that includes two windows. The present six-over-six sash are modern but they occupy mid-nineteenth-century frames. Portions of the original, heavy, eighteenth-century frames were reused within the walls as shims for the newer, smaller frames and were recovered in 1987 during restoration. They were vertically oriented, suggesting that they contained sash rather than casements, and their outer surfaces were rabbeted at the top and sides to receive the outside shingle edges and make a flush, watertight surface. The present outer shingles are early twentieth century and have a ten-inch exposure. A complete, intact set of yard-long, fourteen-inch-exposure, wrought-nailed, early-eighteenth century shingles are preserved underneath the outer sheathing. The shingles extend to ground level.

In east elevation, the house shows an exposed brick end panel, ten feet wide and eight feet high, laid in English bond. The existing nineteenth-century gable loft window is slightly narrower than the original window it replaced. The early frame, recovered in pieces, has a single heavy fixed horizontal muntin (almost certainly its sash were also fixed). The larger six-over-six window at the first-floor level is a 1950's addition; there was no early window at this location. The oil burner chimney that bisects the gable is modern.

United States Department of the Interior
National Park ServiceNATIONAL REGISTER OF HISTORIC PLACES
CONTINUATION SHEETNATHANIEL LONGBOTHAM HOUSE
STONY BROOK ROAD, STONY BROOK
SUFFOLK COUNTY, NEW YORK

Section number 7 Page 3

The dormer visible in north elevation was added in 1947. The dormer's construction disturbed only a small area of roof shingle and lath. The two first-floor windows and the door that separates them are in their original positions. The windows and their frames have the same history as those in the south wall. Although the door surround is original, the present door was borrowed in 1987 from the circa-1840 shed when the doorway, which had been enclosed within the wall for fifty years, was re-exposed.

Most of the west elevation is obscured by the abutting cottage; however, the tall window to the south is a twin to that on the east side and has undergone the same changes. The fixed two-pane frame to the north is early nineteenth century; one of its panes is original. The two-foot-square awning window near the gable peak is modern; it replaces a louver vent that was installed in the 1970's in the same space.

The west exterior wall of the half-house, hidden behind the adjacent cottage wall, was opened during restoration work. Among other interesting discoveries, it was noted that the wall lacked any evidence of exterior sheathing. It would appear that the wall never served as an exterior wall, suggesting that the cottage was appended to the half-house at the time of the latter's construction.

The steep, symmetrical half-house roof is now covered with asphalt shingle on a plywood base. The plywood lies over the original shingle lath. The chimney, whose crown was cut just below the roof ridge in the early 1980's, was reconstructed in 1987 based on a nineteenth-century photograph of the original.

Cottage: The south and north elevations of the central cottage section are the only visible facades, since the east and west walls abut the half-house and garage, respectively. The shingles seen in the south elevation are early twentieth century. Thick, yard-long riven shingles, which extend to ground level, survive underneath. Vacant nail holes indicate that these were repositioned in the eighteenth century, possibly at the time the houses were joined. The south door was installed in 1923 and the double-hung sash are twentieth-century replacements in a nineteenth-century frame. There is some indication that a seventeenth- or early-eighteenth century window once existed in this position.

The west and north walls are clad with tongue-in-groove horizontal sheathing that replaced the original shingles in an early-nineteenth century renovation. During this renovation the north and west walls were disassembled, the studs truncated, and a second reinforcing plate added under the sagging original on the north wall. Interior changes were made at the same time. For about sixty years the newer eight-inch-wide sheathing on these walls formed both the exterior and interior skin of the house, as attested to by the whitewash on its interior face. The door and west window in the north wall date from the same period,

United States Department of the Interior
National Park ServiceNATIONAL REGISTER OF HISTORIC PLACES
CONTINUATION SHEETNATHANIEL LONGBOTHAM HOUSE
STONY BROOK ROAD, STONY BROOK
SUFFOLK COUNTY, NEW YORK

Section number 7 Page 4

although the sash are modern replacements. The casement window in the cottage's northeast corner is mid-twentieth century. A patio of the same age occupies the space between the kitchen and the well.

On the east wall, which abuts the half-house, the exterior siding and plate-to-sill studs were removed in the early eighteenth century when the two buildings were joined. On the west wall the garage addition seals off three former exterior openings. The uppermost opening is a one-pane casement window that probably dates from the early-nineteenth century renovation. It has a delicate jewelry-like hand-wrought wire closure that is unusual. The second opening is an eighteen-inch-square, slatted pantry vent. The slats are formed by cutouts in the horizontal sheathing. The third opening, to the south, is a wide-beaded board-and-batten door that dates from the joining of the houses. Its early eighteenth century installation required the sawing off of one of the cottage's original rising braces. The door retains its original twist-turned wrought-iron hooks.

The wooden shingles of the symmetrical forty-five-degree roof were replaced with asphalt on plywood in the 1970's. As in the half-house, this plywood is laid atop the original shingle lath, which may be of seventeenth-century origin. Two segments of barge or rake board have been recovered: one is in place at the junction of the cottage roof and the half-house wall; the other was found loose in the cottage garret. The cottage chimney was cut to ridge level in the 1970's. It was rebuilt above that point in 1987 based on photographic evidence.

Garage: The one-car garage is shingle-sided to match the rest of the house. Its roof ridge is slightly offset from that of the cottage, as the cottage ridge is offset from that of the half-house. It has two small fixed-position, four-pane windows in its south wall, a car door on the west, and a regular door on the north. The asphalt-shingled roof has a lean-to profile with the long slope to the south.

FRAMING:

Half-House: The oak half-house frame consists of nine posts arranged in three extended bents (Figure 1). At the first-story ceiling level the posts are laced together by 6x7 girts. The vertical tenons of these girts are pegged into the mortises. All four corner posts, as well as the intermediate post on the west wall, have braces rising to the girts; the exception is the southeast corner post, where the front door precludes a brace. The only tie joints in the house occur at the jowled corner post heads. Here the end tie beams, which ride thirteen inches above the end girts, are half-dovetailed over the plates. A set of 6x5 joists, twenty-three inches apart, spans the parlor ceiling. Their horizontal tenons are treenailed into the front and interior girts. In the rear bedrooms a second set of joists of similar scantling, but twenty-one inches on center, are joined to the interior and rear girts.

United States Department of the Interior
National Park ServiceNATIONAL REGISTER OF HISTORIC PLACES
CONTINUATION SHEETNATHANIEL LONGBOTHAM HOUSE
STONY BROOK ROAD, STONY BROOK
SUFFOLK COUNTY, NEW YORK

Section number 7 Page 5

A set of 3x4 studs run vertically between the outer girts and the sills, between the interior girt and the cellar summer, between the girts and the plates and ties thirteen inches above, and between the end rafters and end ties. The five 6x4 rafters, whose carpenter's numerals are sequential, have three-inch-wide trenches in their upper faces to receive shingle lath. These trenches are ten inches apart. The upper outside faces of the corner posts are also trenched to receive the lath that supports the wall shingles. The 6x5 cellar sleepers, twenty-inches on center, are taper-tenoned without pegs into the sills and the cellar summer.

Cottage: The oak frame of the cottage consists of four shouldered, jowled corner posts bound north-south by 7x5 end ties and connected east-west by 6x6 plates (Figure 2). The post head offers a teazle tenon to the end tie, which overrides the plate and clinches it with a half-dovetail joint. Intermediate tie beams also bind the plates with half-dovetail joints. Studs run from the end ties and plates to the sills and also from the end rafters to the end ties. The 4x5 rafters, birdmouthed and spiked onto the plates, are bridled together at their apices and held fast with treenails. The raising numerals at these unions are in sequence. The upper rafter faces are trenched for lath at fourteen inch intervals.

The framing of the cottage indicates that it was a freestanding building that was added to the half-house at the time of the latter's construction. Rather than tying directly into the frame of the half-house, there is a duplication of sills and girts where the two buildings meet. The studs and exterior wall of the cottage were removed when it was attached to the half-house and the rising braces at the corner posts were sawn off. Nevertheless, the pockets for the studs in the sill and girt remain, and the braces's mortise and tenon remnants were left in the posts. This evidence affirms the existence of the original exterior wall in the cottage. The lack of exterior sheathing on the half-house wall indicates that the cottage was attached at the time the half-house was built, suggesting that the cottage is the older of the two buildings.

INTERIOR ARCHITECTURAL FEATURES:

Half-House: The original half-house first-floor plan consisted of a sixteen-by-sixteen foot parlor and four-foot-wide entry in front, and twin ten-foot square bedrooms at the rear. A wide, steep stair ascended in a straight run from the entry to the loft. An outdoor bulkhead led to the cellar, which underlay the entire half-house save for the chimney bay. The two twentieth-century modifications to this plan are the conversion of a portion of the west bedroom to a bath, and the addition of a loft dormer.

Parlor: The parlor has twelve-inch-wide southern yellow pine floorboards that are original. The room is girdled by a chair rail with

United States Department of the Interior
National Park ServiceNATIONAL REGISTER OF HISTORIC PLACES
CONTINUATION SHEETNATHANIEL LONGBOTHAM HOUSE
STONY BROOK ROAD, STONY BROOK
SUFFOLK COUNTY, NEW YORK

Section number 7 Page 6

a protruding cap and cavetto molding, and by a five-inch-tall baseboard with a large quirked bead on its upper edge. The baseboard was originally whitewashed. At a later date, probably at the end of the eighteenth century, it was painted Prussian blue. At some time in the late eighteenth or early nineteenth century, a coat of blue-green paint was continued from the baseboard onto the adjacent floor in a two-inch stripe, forming a painted floor border. This border expands to six-inches, where it makes a curviform sweep around the corner posts and also where it meets the end of the hearth. The same blue-green paint is continued at chair-rail height across the otherwise whitewashed corner posts.

The walls are plastered over hand-riven, non-accordion lath. Their surface history comprises eight coats of whitewash, some apparently with tinting agents, and as many coverings of wallpaper. In 1920 thin tongue-in-groove pine matchboard was applied over the papered walls. After photo documentation in 1986, the matchboard and wallpaper were removed and the plaster was restored. Two floor-to-ceiling fluted pilasters frame the fireplace. The balance of the end wall consists of raised, beveled pine panels set in rails and stiles. The wall is capped by a multiple-profile crown molding, which flares as it moves forward to form the two pilaster capitals. The original ceiling plaster was removed in the 1940's. Only the corners of the girts and posts were exposed when the plaster was still in place. These corners are delicately flat-chamfered and have lamb's tongue stops.

The brick fireplace measures seven-and-one-half-feet wide, four-and-one-half-feet high, and four-feet deep. The brick is laid in English bond and has an omega-shaped smoke channel. Its piers taper inward slightly toward the rear and support inch-thick sleepers. The 9x12 manteltree that rides atop the sleepers is one of two components in the house that are chestnut (the other includes the original window frames). Mud plaster clings to the lower flue and the beveled inside face of the manteltree. The hearth protrudes a foot into the room and is composed of large fieldstones.

Bedrooms: The two bedrooms were originally identical, as are the twin side-by-side doors leading to them from the parlor. Originally the floor was of southern yellow pine and the walls and ceilings were plastered. The original floors were replaced with random-length oak in the 1970's and the walls, sheetrocked in the 1940's, were insulated and re-plastered in 1987. As in the parlor, the ceiling beams have been left exposed for their educational value. The northeast corner post of the east bedroom is flat-chamfered but the medial post in the same bedroom four feet west of it is encased in an original beaded box. The bath that was sectioned off from the west bedroom in the 1940's was updated in 1987 with a shower-tub combination, a new toilet, and a pedestal sink. The Art Deco medicine chest was left in place.

United States Department of the Interior
National Park ServiceNATIONAL REGISTER OF HISTORIC PLACES
CONTINUATION SHEETNATHANIEL LONGBOTHAM HOUSE
STONY BROOK ROAD, STONY BROOK
SUFFOLK COUNTY, NEW YORK

Section number 7 Page 7

Entry/Stair: The east wall of the entry and stairwell at the southeast corner of the house contains fifteen-inch-wide horizontal sheathing. The west wall is vertically sheathed with the same material. Each board is beaded on both edges. The inside upper corner of the brick end panel is wider than the chimney and visible from the stairwell. Its exposed inner face is whitewashed. The lower stair landing consists of early-nineteenth century wide boards over the originals, which are extensions of the parlor floorboards. The west stringer and the first riser of the original stair are still in place; however, the balance of the stair was restored in 1987 based on paint evidence. Each stair has an eleven-inch rise over a seven-inch run and there are two pie-shaped winders at the top where the stair meets the chimney.

Loft: The loft retains its original floorboards. Hand-wrought lath nails and plaster burn indicate that there was an early, if not original, room in the northeast corner of the loft. There was also a small mid-nineteenth century room in the southwest corner. The two rooms likely co-existed until 1947. At present the loft is a single open room with a twentieth-century closet occupying part of the space that once fell within the eighteenth-century room. Although insulation has been introduced, all framing members are still visible in the room.

Cellar: The full-height cellar underlies the entire half-house, except for the chimney bay. Its walls are dry-laid local glacial erratics, one of which is six feet long and located beneath the chimney. The walls are pointed with poorly calcined mortar. Partially burnt clam and oyster shells permeate the sandy mix. Nearly seventy-five percent of this original mortar is in place. The east wall, which had bowed severely outward under the weight of the chimney, was shored up in 1987 with three cement buttresses reinforced with iron bar.

The forty-five-inch-wide board-and-batten entry door to the cellar retains one of its original strap hinges and leather washers. The door's boards are the same double-beaded sheathing as in the upstairs entry. It is scalloped along its outer edge to reflect the irregular profile of the cellar wall against which it closes. The sleepers under the parlor are original as are the draft strips trenched between them to seal the gaps between abutting floorboards. The sleepers have roughly the same dimensions and orientation as the floor joists above. The sleepers north of the cellar summer were replaced in the 1970's with modern two-by-eights. The dirt floor was covered with cement in 1957. The new oil-fired forced-air system uses a high-retention burner. Its two-and-one-half-inch ductwork is especially designed for low-impact retrofits. The plumbing is copper and the 100-amp Romex electrical circuits are protected by 15- and 20-amp circuit breakers.

Cottage: The plates, tie beams, and posts are exposed within the sixteen-by-fifteen foot kitchen of the one-room cottage. Some portions of eighteenth-century chair rail, probably dating to the joining of the

United States Department of the Interior
National Park ServiceNATIONAL REGISTER OF HISTORIC PLACES
CONTINUATION SHEETNATHANIEL LONGBOTHAM HOUSE
STONY BROOK ROAD, STONY BROOK
SUFFOLK COUNTY, NEW YORK

Section number 7 Page 8

houses, survive on the east and south walls. Below the chair rail on the south wall is a dado of eighteenth-century tongue-in-groove cedar wainscoting. Prior to the 1987 restoration, all four walls and the ceiling were covered with matchboard. Removal of this surface exposed circa-1870 plaster. The plaster was removed, insulation introduced, and the walls re-plastered. Although no early plaster survives, six early lath were found in the upper southwest corner of the room. These were photographed and were left undisturbed.

The vertically sheathed fireplace wall on the west end of the kitchen was installed during the early nineteenth century renovation. Its south door, cut from the same boards as the wall, opens into a five-foot-square entry room with an outside door. This door was sealed shut by the garage addition. The wide-beaded north door in this sheathed fireplace wall is older than the sheathing. The door and the two boards that form its jambs appear to have been recycled from an earlier wall. The door leads to a five-foot-square pantry also built during the early renovation. The two exterior walls of the pantry are nogged with bricks recycled from the cottage's original or early fireplace. They are set edge-wise in sandy lime mortar and are plastered. Wooden header strips set between studs compartmentalize the bricks to prevent excessive settling. These header strips are toe-nailed to the studs with machine-cut nails. The pantry shelves are original. Some of the supports for the shelves are half-heart-shaped.

The fireplace appears to have been rebuilt in the nineteenth century from earlier seventeenth-century materials. The brick from which it is built is the same recycled brick used for the pantry but the efficient form of this thirty-seven-inch-wide, thirty-two-inch-high, seventeen-inch-deep firebox with forward-leaning back suggests a much later date. The four-and-one-half-foot-deep external bake oven has its own flue which intersects the main chimney above the firebox. The rear two-thirds of the long bake oven are built upon two boards that are suspended over open space. A third one-inch-thick board nailed between studs supports the first two at the wall. At one time the chimney was threatening to collapse and damage the house frame. It has been reconstructed but the bake oven was left untouched due to its rarity and educational value.

The cottage retains its dry-laid glacial erratic foundation and portions of its original sills. The original floor and sleepers, which probably sat on the ground, were removed in the 1970's. A cinderblock foundation was set inside the original walls and modern two-by-eights were used to support the new floor. The present crawlspace has a poured-concrete pan.

Garage: The garage has a poured concrete floor, a cinderblock foundation wall, and two-by-four stud walls. Although it has electric service it is otherwise unfinished.

United States Department of the Interior
National Park ServiceNATIONAL REGISTER OF HISTORIC PLACES
CONTINUATION SHEETNATHANIEL LONGBOTHAM HOUSE
STONY BROOK ROAD, STONY BROOK
SUFFOLK COUNTY, NEW YORK

Section number 7 Page 9

INTEGRITY:

Exterior: Due primarily to the modest means of the nineteenth- and twentieth- century occupants, this house has seen little change and displays a remarkable degree of architectural integrity. The frames of the two principal components have not been altered appreciably since 1746 and the exterior integrity is excellent. The building today looks almost precisely as it does in a circa-1870 photograph. Allowing for the early nineteenth century sheathing on the west end of the cottage, that photograph probably shows the house virtually as it looked when the two buildings were joined. The modern additions include the garage, the shingles, the oil-burner chimney, and the dormer.

Interior: The degree of preservation is similarly good on the interior. The changes to the cottage that were completed in the early nineteenth century represent the only substantial alterations. These changes are historically important and enhance the interpretation of the house for the circa 1650 to 1850 period of significance.

Setting: The house was erected between two glacial hills and tucked in the acute vertex formed by the junction of two roads. Although only a fraction of the original home lot remains, the vertex in which the house sat has been preserved intact and looks much as it did in the 1870 photograph. Most of the original 150-acre farm was located above the gully and could not be seen from the house; therefore, the fact that it now belongs to the state university does not overly detract from the historical setting of the site.

OUTBUILDINGS AND OTHER IMPORTANT FEATURES:

Well: The seventeen-foot-deep well (one contributing structure) immediately behind the kitchen dates at least to the time the houses were joined. Its circular shaft is hand-lined with dry-laid glacial erratics in the same manner as the half-house cellar. Late nineteenth century documents characterize the well as unreliable and a hand pump was installed in the early 1900's. Its cylindrical cast-iron shaft was sunk through the well floor to a depth of one-hundred feet to assure a continuous water supply. Although the pump base probably was anchored to a wooden well cover, the current cover is cast cement. The pump is still in place and the original well shaft is in an excellent state of preservation.

Shed: The shed (one contributing building), built about 1840 judging from its construction, is nine feet tall, seven-and-one-half feet wide, and nine-and-one-half feet long. It sits on the edge of the property behind the cottage. Although it was shingled in the twentieth century to match the house, the shingles are underlain by original tongue-in-groove vertical sheathing. As in the pantry, slatted vent windows are cut from this sheathing. The roof, now asphalt, was originally wood shingle and

United States Department of the Interior
National Park Service

NATIONAL REGISTER OF HISTORIC PLACES
CONTINUATION SHEET

NATHANIEL LONGBOTHAM HOUSE
STONY BROOK ROAD, STONY BROOK
SUFFOLK COUNTY, NEW YORK

Section number 7 Page 10

is in place underneath. The shed is framed with reciprocal-sawn lighter members. While some of these are tenoned together without pegs, most are nailed. A cut-out at the north end of the roof ridge once accommodated a flue pipe. Several local residents recall that illicit liquor was manufactured in the shed during Prohibition and offered for sale at the house.

United States Department of the Interior
National Park Service

NATIONAL REGISTER OF HISTORIC PLACES
CONTINUATION SHEET

NATHANIEL LONGBOTHAM HOUSE
STONY BROOK ROAD, STONY BROOK
SUFFOLK COUNTY, NEW YORK

Section number 7 Page 11

FOOTNOTES:

1. The information presented in Items 7 and 8 is derived from the findings of a 600-page Yale University thesis on the house in nomination. Volume I discusses the architecture and conservation, Volume II traces the social history, and Volume III records the archaeological excavation conducted at the site.

8. Statement of Significance

Certifying official has considered the significance of this property in relation to other properties: nationally statewide locally

Applicable National Register Criteria A B C D

Criteria Considerations A B C D E F G

Areas of significance	Period of Significance	Significant Dates
<u>ARCHITECTURE</u>	<u>CIRCA 1660 TO 1850</u>	<u>NA</u>
<u>SETTLEMENT</u>	_____	_____
_____	_____	_____

_____	Cultural Affiliation
_____	<u>NA</u>
_____	_____
_____	_____

Significant Person	Architect/Builder
<u>NA</u>	<u>NA</u>
_____	_____
_____	_____

State significance of property, and justify criteria, criteria considerations, and areas and periods of significance noted above.

The Nathaniel Longbotham House is architecturally and historically significant as a representative, highly intact example of early-eighteenth century domestic architecture on central Long Island that recalls the early settlement of the hamlet of Stony Brook. The principal element of the house is a nine-post, heavy timber frame, one-and-one-half story half-house probably constructed between 1735 and 1745. The half-house plan is an important vernacular settlement period building type once common on central Long Island. The distinctive characteristics of the side-entrance type include a first-floor consisting of a single square room in front and twin rooms at the rear. A single end-chimney occupies most of one gable wall leaving room for a small entry wall and stairwell to the loft at the same end. The history of settlement period architecture on Long Island is often discussed with reference to two distinct periods including Period I, from the earliest settlement to the circa 1730's, and Period II, from the 1730's to about the time of the American Revolution. A rare variation of the standard Period I (1630-1735) house form, the Nathaniel Longbotham half-house displays an amalgamation of English and Dutch building practices that recalls the early ethnic vernacular building tradition of central Long Island. The Longbotham house retains both period I (1630-1735) and transitional Period II (1735-1776) details and finishes. Period I traits include delicately chamfered exposed posts and girts and a massive brick fireplace with omega-shaped smoke channel. Period II traits include the plastered ceiling, a number of boxed corner posts and the elaborate paneling applied to the fireplace wall. Additional generic settlement period characteristics of the half-house include the painted floor border in the parlor, the two original six-panel bedroom doors, the double-beaded stairwell sheathing, the sequentially numbered rafters trenched for roofing lath, and the original fourteen-inch-exposure, wrought-nailed, wood-shingle sheathing on the exterior. Attached to the half-house is a smaller cottage that appears to have been built between 1660 and 1746. The four-post framing of the cottage -- currently without comparison on Long Island -- appears to be an early example of a poor class workman's dwelling. Significant architectural features of the cottage include the heavy timber oak framing joined with teazle tenon and half-dovetail joints, the brick fireplace with external bake oven, the intact chair rail, the tree-nailed rafters with sequential raising numerals, and the early yard-long riven shingles on the exterior. The cottage wing of the house is highly significant as a rare surviving example of the less pretentious vernacular working class housing that may have been common during the settlement period in the region. Minor alterations to the house and the later outbuildings on the property also recall the continued occupation of the residence into

United States Department of the Interior
National Park Service

NATIONAL REGISTER OF HISTORIC PLACES
CONTINUATION SHEET

NATHANIEL LONGBOTHAM HOUSE
STONY BROOK ROAD, STONY BROOK
SUFFOLK COUNTY, NEW YORK

Section number 8 Page 2

the nineteenth century. Currently used as a private residence, the Nathaniel Longbotham house has been sensitively restored. It is one of the most intact and thoroughly documented settlement period houses in the region. The resource is a well-recognized local landmark that recalls local settlement and regional vernacular building practices during the early eighteenth century in central Long Island.

HISTORY OF THE COMMUNITY AND NOMINATED BUILDING:

Community History: The village of Stony Brook was settled in the third quarter of the seventeenth century by Englishmen from neighboring Setauket. For 250 years the community's livelihood was based equally on the land and sea. As the masted-ship era waned so did the fishing, overseas trade, and shipbuilding industries. By 1950 the metamorphosis from hamlet into suburb had begun. As farmer met developer, the agrarian community realized that its biggest asset was the land itself and holdouts often had to sell to keep apace of soaring land taxes. Today Stony Brook is again a dual-economy town: academic--over 20,000 students attend the state university--and service/residential--the town's quaint, expensive homes shelter thousands among the millions of metropolitan area commuters.

History of the Nominated Building: The prominent men of Setauket began awarding themselves land lots in undeveloped Stony Brook in the 1660's. These lots lay "...on the plain, in the hollow, in the thatch meadow, and on the West Line..." to use their words. The West Line is the Brookhaven/Smithtown border, which lies a few hundred yards west of the Longbotham house. Brookhaven records show that "The Inhabitants that drew their lots by the west line 1677 [were] Jacob Longbottom the first 20...Widdow Perry 13th being 25 acres...Joseph Longbottom fifteen [15th] 15 acres." Of the fifteen lots drawn, three fell into Longbotham hands.

"Widdow Perry," mother of Jacob and Joseph and grandmother of Nathaniel, married Henry Perring when her first husband, Jacob Longbotham, died. A torn page in the town records says that in the "...years of our lord god 1669...the above said Henry Pering...[shall] build or cause to be dun [a mill]...to [grind] sufficient meale of the corn...." An entry two years later reads, "17 December 1671 Henry Perring have freely given the mill now in the town [Setauket] to his two sonns [sic] in law that is to say Jacob Longbothem and Joseph Longbothem...." Jacob received his stepfather's house. Town records of 1678 show that Joseph built his own house in Setauket. As Setauket's millers, Jacob and Joseph were almost certainly men of wealth and prominence.

In 1716, Joseph Longbotham conveyed to his son Nathaniel the fifteen-acre West-Line lot and widow Perring's twenty-five acre lot. In the town equalizing of 1721, Joseph acquired several more lands including

United States Department of the Interior
National Park ServiceNATIONAL REGISTER OF HISTORIC PLACES
CONTINUATION SHEETNATHANIEL LONGBOTHAM HOUSE
STONY BROOK ROAD, STONY BROOK
SUFFOLK COUNTY, NEW YORK

Section number 8 Page 3

"5 akers...lying between ye path leading to stony brook & 10 akers more on ye nort side of ye hollow leading to Stony Brook." These are the two most likely candidates for what was to become Nathaniel's home lot and they were deeded to Nathaniel in 1726 along with other West Line holdings. On this land Nathaniel constructed his half-house, attaching an earlier cottage (of unknown origins) at the same time. The existence of the house is first documented in 1746, when the town commissioners laid out "a highway from Stoonny broock leading by Nathaniel Long bottoms house as the Road is Marked out...." How long the house had been there at that time can only be guessed.

The house Nathaniel built, though not commodious by today's standards, was significantly larger than average for the time and showed striking refinement in form and finish. The house and generous land holdings suggest that Nathaniel Longbotham enjoyed the financial benefit of his father's mill. Nathaniel had two sons, Samuel and William. In 1772 Nathaniel willed to Samuel "...all the remainder part of my land, with all the buildings, reserving to my wife the use of all my house during her life." Samuel's five offspring were girls. With no males to inherit the farm, he ordered in his will of 1813 that "...all my lands and the buildings thereon...be sold as soon after my decease and in such manner as shall appear to my executors to be most advantageous." Most of the land was sold to William Jayne in an 1814 deed that was never recorded but survived in the Jayne family. The home lot went to William Hawkins. Although this deed was not recorded, circumstantial evidence for the conveyance is suggestive. Hawkins was present as a witness at the signing of the Jayne conveyance, he assumes Samuel Longbotham's position on the federal census sheet (which lists homes in relatively consistent order of occurrence), and the previous owner of the house is referred to in a document filed at the end of the Hawkins tenancy.

With the change of families, the connection to the original Longbotham family was severed and the farm began to decline. Stony Brook Secrets, a history written in 1941, reports that William Hawkins felt "the structure was getting too old for comfortable living, so he started to build another one close by...The [new] structure remained uncompleted." Hawkins was a farmer of only average means. The value of the farm, as evaluated in a mid-nineteenth century census, was \$2,000, indicating a low-middle class position for the family. The farm was losing the status it enjoyed 100 years earlier.

William lived a long life with as many as eight others occupying the house. Of his five children, three were male. Two sons married but his last-born, Charles Edwin, lived in the house with William and his wife for fifty years. Records from 1871 show that "Eddie," as he was called, worked part-time at the local lumber mill, an indication that the farm was no longer self-supporting. On William's death in 1878, Eddie inherited the house. A Suffolk County Surrogate Court's report compiled in 1899 after Eddie's death states that the home lot "is to a large

United States Department of the Interior
National Park ServiceNATIONAL REGISTER OF HISTORIC PLACES
CONTINUATION SHEETNATHANIEL LONGBOTHAM HOUSE
STONY BROOK ROAD, STONY BROOK
SUFFOLK COUNTY, NEW YORK

Section number 8 Page 4

extent hilly, rocky, and of light soil, and subject to being gullied by ordinary rains.... There are only about 9 acres of cultivated land upon it and that is exhausted by previous crops. The house is small and of but one story, and very old. It is so low on the ground that water fills the cellar in heavy rains and thaws so that pork in barrels have been submerged. The deponent has seen. Deponent has been trying to find a buyer for this house and parcel of land for several months and he has not been able to find a buyer at the sum of \$700. That he would sell it for that sum if he could find a person who would give it." Claims against the estate actually exceeded its value. The report noted that for two years Eddie was "as helpless as a babe, entirely unable to do anything for himself. His spine was paralyzed. He was a heavy man and it required three men to lift him. He had no control of himself and had to be changed from one chair to another several times a day." This unusually explicit document suggests that over the course of two centuries this early Long Island farm and its occupants slid from one end of the socioeconomic spectrum to the other.

After ten years the farm was sold to a New York real-estate middleman who simultaneously sold it to John Lewis Childs. Childs was one of the wealthiest landowners in Stony Brook at the time. He was interested in adding the small parcels on the west side of Stony Brook Road to his 600-acre flower bulb nursery. The house was to be used for employee housing. In 1933 he deeded the property to Anthony Henslik, one of the many Bohemian immigrants who worked in his fields. In 1947 Henslik sold to Margaret Reynolds, who added the dormer, and in 1951 she conveyed it to Belitha Beasley, who added the garage. Ward Melville bought the house in 1956, rented it, and sold it in 1976 to Edward and June Davis. June Davis replaced the floor of the cottage and then sold it to local tree expert Hal Usher in 1984. In 1986 the house was purchased by the current owner, Steve Marlens. An archaeologist and preservationist, Marlens spent two years conserving the house. In 1987 it was visited by 1,000 community residents and in 1988 it was seen by 200 members of the Society for the Preservation of Long Island Antiquities.

REGIONAL CONTEXT:

Half-House: Long Island's early architecture has yet to be the focus of a major comprehensive scholarly investigation. From what is known, the Nathaniel Longbotham house appears to be one of central Long Island's only surviving examples of a nine-post symmetrical-roofed half-house. Moreover, it is an outstanding, innovative, and extremely well-preserved compendium of regional building traits. There are settlement period houses throughout Long Island that share individual regional characteristics with the Longbotham house such as the side-by-side bedroom doors, heavy single-span joists, exposed masonry end panels, trenched shingle lath systems, draft strips and interior girts. Nevertheless, only one other known example in central Long Island comes

United States Department of the Interior
National Park ServiceNATIONAL REGISTER OF HISTORIC PLACES
CONTINUATION SHEETNATHANIEL LONGBOTHAM HOUSE
STONY BROOK ROAD, STONY BROOK
SUFFOLK COUNTY, NEW YORK

Section number 8 Page 5

close to resembling the overall massing, configuration and structural make-up of the Longbotham house. The Miller Millard house in Miller Place, Long Island, is owned by the Miller Place Historical Society. The oldest portion of the house contains two joined buildings of the same period as the Longbotham house. They are nine-post, story-and-a-half half-houses with tie beams limited to an upper tier that is raised slightly over the girts. As in the Longbotham house, twin doors under the interior girt once led to identical rear bedrooms. The principal stylistic and structural difference is that the Miller Place house was built with an integral lean-to. While stylistically and structurally related to the half-house design of the Miller Place saltbox, the Nathaniel Longbotham house represents a different variation of the New English settlement period architectural type. In many ways the Nathaniel Longbotham house appears to be one of the last of its kind on central Long Island.

Cottage: The cottage is the only known example in the northeast of a First Period (1630-1735), four-post, one-room workman's house. Historian Abbott Lowell Cummings knows of none in New England. Architectural historian Dell Upton, an expert in southern colonial architecture, reports that he is aware of a single example (built about 1725) in Virginia. While the lack of information on comparable examples of four-post one-room cottages may, in part, be a function of the general poverty of research, the apparent rarity of the Nathaniel Longbotham house supports the property's historical and architectural significance.

ARCHITECTURAL AND HISTORICAL CONTEXT:

Location: The siting of this building between two hills is one of its most informative features. Although few examples of this kind of siting remain, it was once common and demonstrates that wind protection was a concern to early settlement period builders.

Half-House: The Longbotham house represents a blending of, and elaboration on, English and Dutch building traditions of the settlement period. Whereas European analogs can be found for most Period I (1630-1735) American structures, good examples relative to the Longbotham house appear to be lacking. As a result of the amalgamation of English and Dutch building traits, the resource is a vernacular American house that could have occurred only here; as such, the resource has much to contribute to the history of early American architecture.

Frame: The fat, single-span parlor joists are slightly downsized versions of the anchorbeams seen in Dutch and Huguenot buildings from Delaware to the northern Hudson Valley. In stone dwellings these anchorbeams are received by the masonry wall, while in frame dwellings each anchorbeam is supported by an anchorpost. In the Longbotham house there are no anchorposts. Instead, the Dutch-type joists are tenoned into a single interior girt which receives a second set of joists from

United States Department of the Interior
National Park ServiceNATIONAL REGISTER OF HISTORIC PLACES
CONTINUATION SHEETNATHANIEL LONGBOTHAM HOUSE
STONY BROOK ROAD, STONY BROOK
SUFFOLK COUNTY, NEW YORK

Section number 8 Page 6

the opposite side. The girt is the functional equivalent of an English summer beam; however, a true summer beam would occur at the center of the parlor, not at the end, and it would carry thin joists not massive ones. Thus, the interior girt is really an adaptation of the English summer beam to suit the demands of Dutch joists.

The innovative blending of Dutch and English architectural influences is also apparent in the three bents. The two outer bents are English. Their corner posts flare at the top to support the plate and end tie. The center bent is Dutch. Its posts do not flare and there are no dovetail joints. Instead, the posts are tied with mortise and tenon joints well below the post heads to form an extended anchorbent.

Exterior: The exposed masonry end panel is a Dutch-derived trait seen in eighteenth-century dwellings as far north as Schenectady, New York and Wethersfield, Connecticut, and as far south as Delaware. The trenched roof lath system is a Period I feature that evolved on both sides of the Long Island Sound, in Rhode Island, and on Staten Island. Sometimes this lath is affixed with treenails; however, at the Longbotham house it is nailed. Even rarer is the trenched wall shingle lath in the half-house, which is also present in examples at nearby Bridgeport, Connecticut. The draft strips trenched between sleepers replace subflooring and have roughly the same geographic distribution as the trenched shingle lath system. The original gable window frames are of important archaeological interest for, as far as is known, their thick, pegged frames with fixed massive horizontal center muntins are a transitional form that has not been documented elsewhere.

Interior: The single most important interior feature is the omega-shaped smoke channel in the rear of the firebox. Although not identical, it is similar in form to the hourglass-shaped smoke channels at the National Register listed Thompson House (ca. 1705) and the Satterly-Jurgensen House (ca. 1710) in nearby Setauket. It is possible that all three chimneys are the work of the same mason. While rectilinear smoke panels are common in Period I houses throughout the east, these curvaceous Long Island channels demonstrate that distinctive, creative, and striking architectural traits sometimes arose locally as well as regionally in early America.

A second important feature of the interior is that its characteristics, taken together, recall the transition from the First (1630-1735) to the Second (1735-1776) Period of early American architecture. The fireplace paneling, perhaps most characteristic of Second Period interior finishing, frames a massive fireplace that exhibits purely First Period characteristics. The parlor ceiling was plastered, a later trait, but the posts and girts that show through it are delicately chamfered, a strong First Period trait. The southeast corner post in the stairwell is chamfered, yet the girt that runs to it is boxed. The corner post in the east bedroom is chamfered, yet the

United States Department of the Interior
National Park ServiceNATIONAL REGISTER OF HISTORIC PLACES
CONTINUATION SHEETNATHANIEL LONGBOTHAM HOUSE
STONY BROOK ROAD, STONY BROOK
SUFFOLK COUNTY, NEW YORK

Section number 8 Page 7

intermediate post four feet from it is boxed. The juxtaposition of these individual architectural traits illustrates the transitional characteristics of the house.

Other architecturally significant features include the painted floor border in the parlor and the two six-panel bedroom doors, which demonstrate excellent craftsmanship. The double-beaded stairwell sheathing is a further example of typical period craftsmanship on Long Island. The cellar walls contain a great deal of exposed original mortar and the composition of this mortar is of interest to the study of early eighteenth-century building fabric.

Cottage: The cottage frame is significant for its contrasts with the framing system of the half-house. While the half-house is a rare hybrid whose complex and generously proportioned frame is executed with exactitude, the cottage frame shows English work at its crudest.

Frame: Traditional discussions of early Long Island architecture suggest that the smallest freestanding Long Island buildings contained at least six posts; the intermediate posts supported a chimney girt that defined a chimney bay. In the Longbotham cottage the chimney bay was formed simply by increasing the space between tie beams at one end of the house. While this is the most expedient means of creating a bay, the front and rear plates must span the entire distance between corner posts supported only by thin studs. The rear plate in the cottage failed for this reason early in the nineteenth century. Fortunately for historians, economic circumstances dictated that the owners repair it rather than replace the entire cottage. To save money during the renovation, bricks from the earlier chimney were recycled and used in the new chimney and pantry. The fancy chair rail and wainscoted dado that were installed when the two buildings were joined were lost when the walls needing repair were opened. The backside of the new tongue-in-groove exterior sheathing became the inside of the room. Thus, the cottage had passed through a complex series of changes, alterations and modifications: when the cottage was freestanding, its interior walls were unfinished (the backsides of the shingles were whitewashed); when the two houses were joined, additions of plaster, a chair rail, and wainscoting were completed to make the cottage worthy of the half-house; after the Hawkins renovation, the studs were once again left showing on two walls, while the better finish of the previous era survived on the other two walls.

Much of the region's architectural building stock that survives from the First Period is representative of the relatively capacious and pretentious dwellings built and owned by the most prosperous, landed men of that era. It is only in recent decades that historians and preservationists have taken an active interest in the study and protection of the simple vernacular abodes of the common working men of that period. The attention that this class of properties is now receiving has accentuated the growing awareness of the extreme rarity of

United States Department of the Interior
National Park ServiceNATIONAL REGISTER OF HISTORIC PLACES
CONTINUATION SHEETNATHANIEL LONGBOTHAM HOUSE
STONY BROOK ROAD, STONY BROOK
SUFFOLK COUNTY, NEW YORKSection number 8 Page 8

this building type. As a representative and highly intact example of a poor man's four-post, single-room cottage, the small wing of the Nathaniel Longbotham house may be a rare surviving example of this early building type.

SECONDARY CONTRIBUTING RESOURCES:

The well to the rear of the house is one of the few remaining wells in the area that may date to the First Period (1630-1735). It is in excellent condition, due to the fact that it is dry most of the time. Its strong and true walls of rounded glacial stones, laid without mortar, display the skill with which these important features were constructed. The well functioned as the principal source of water for the occupants of the house throughout the period of significance.

The shed is a representative example of mid-nineteenth century outbuilding construction. In contrast with the house framing, the light wood members of the shed reflect the changing building practices that had evolved over the two-hundred year occupation of the property from 1650 to 1850. The intact shed retains a high degree of historic fabric and contributes to the visual and historic context of the nominated resource. Along with the early nineteenth century modifications to the house, which include the rebuilding of the cottage fireplace and chimney, this resource recalls the continued use of the property during the first half of the nineteenth century. Few alterations to the nominated resource appear to have been completed after 1850, except for the circa 1950's changes of the modern era.

9. Major Bibliographical References

- Laoham, Edward A. Stony Brook Secrets. New York: Gotham Bookmart Press, 1942.
- Marlens, Steven I. "A Documentary History of the Longbotham-Hawkins-Marlens House, Stony Brook, Long Island, New York." Yale University, 1988.
- Marlens, Steven I. "The Nathaniel Longbotham House: Structural Analysis." Yale University, 1988.

Previous documentation on file (NPS):	<input type="checkbox"/> See continuation sheet
<input type="checkbox"/> preliminary determination of individual listing (36 CFR 67) has been requested	Primary location of additional data: <input checked="" type="checkbox"/> State historic preservation office
<input type="checkbox"/> previously listed in the National Register	<input type="checkbox"/> Other State agency
<input type="checkbox"/> previously determined eligible by the National Register	<input type="checkbox"/> Federal agency
<input type="checkbox"/> designated a National Historic Landmark	<input type="checkbox"/> Local government
<input type="checkbox"/> recorded by Historic American Buildings Survey # _____	<input type="checkbox"/> University
<input type="checkbox"/> recorded by Historic American Engineering Record # _____	<input type="checkbox"/> Other
	Specify repository: _____

10. Geographical Data

Acreeage of property .12 ACRES

UTM References

A	<u>18</u>	<u>65711000</u>	<u>45299400</u>	B	<u> </u>	<u> </u>	<u> </u>
	Zone	Easting	Northing		Zone	Easting	Northing
C	<u> </u>	<u> </u>	<u> </u>	D	<u> </u>	<u> </u>	<u> </u>
	Zone	Easting	Northing		Zone	Easting	Northing

See continuation sheet

Verbal Boundary Description

The nominated property consists of a triangular .12-acre parcel situated at the corner of Stony Brook Road and Woods Lane in the unincorporated hamlet of Stony Brook, Brookhaven Township, Suffolk County, Long Island, New York (see map 2).

See continuation sheet

Boundary Justification

The nominated parcel of land is all that remains associated with the house from what was once a 150-acre farm. Most of the original farm was upland which now belongs to the State University at Stony Brook.

See continuation sheet

11. Form Prepared By

name/title Robert D. Kuhn, Historic Preservation Program Assistant
organization Office of Parks, Rec., and Historic Preservation date August 1989
street & number Agency 1, Empire State Plaza telephone (518) 474-0479
city or town Albany state New York zip code 12238

United States Department of the Interior
National Park Service

NATIONAL REGISTER OF HISTORIC PLACES
CONTINUATION SHEET

NATHANIEL LONGBOTHAM HOUSE
STONY BROOK ROAD, STONY BROOK
SUFFOLK COUNTY, NEW YORK

Section number 11 Page 2

Research and Documentation Prepared by:

Steven Marlens
Historic Home Consultant
1541 Stony Brook Road
Stony Brook, New York 11790

Nathaniel Longbotham House
Stony Brook Road
Stony Brook, Suffolk County
Long Island, New York

NATH: L LONGBOTHAM
HALF - HOUSE
STONY BROOK
LONG ISLAND

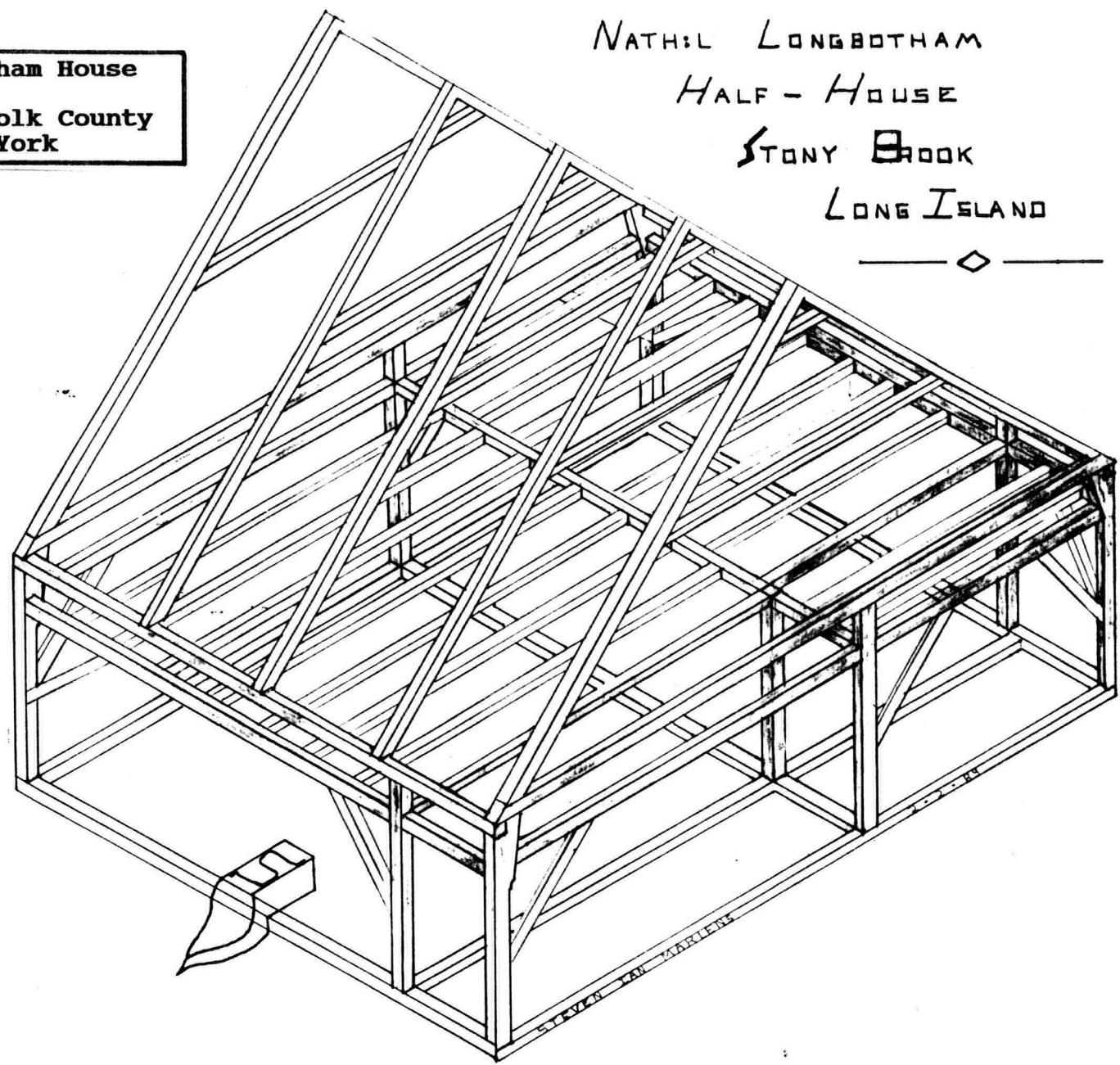


Figure 1 - Framing system of the Nathaniel Longbotham half-house.

**Nathaniel Longbotham House
Stony Brook Road
Stony Brook, Suffolk County
Long Island, New York**

ISOMETRIC VIEW OF CARCASS
FOUR-POST COTTAGE
NATHANIEL LONGBOTHAM HSE.

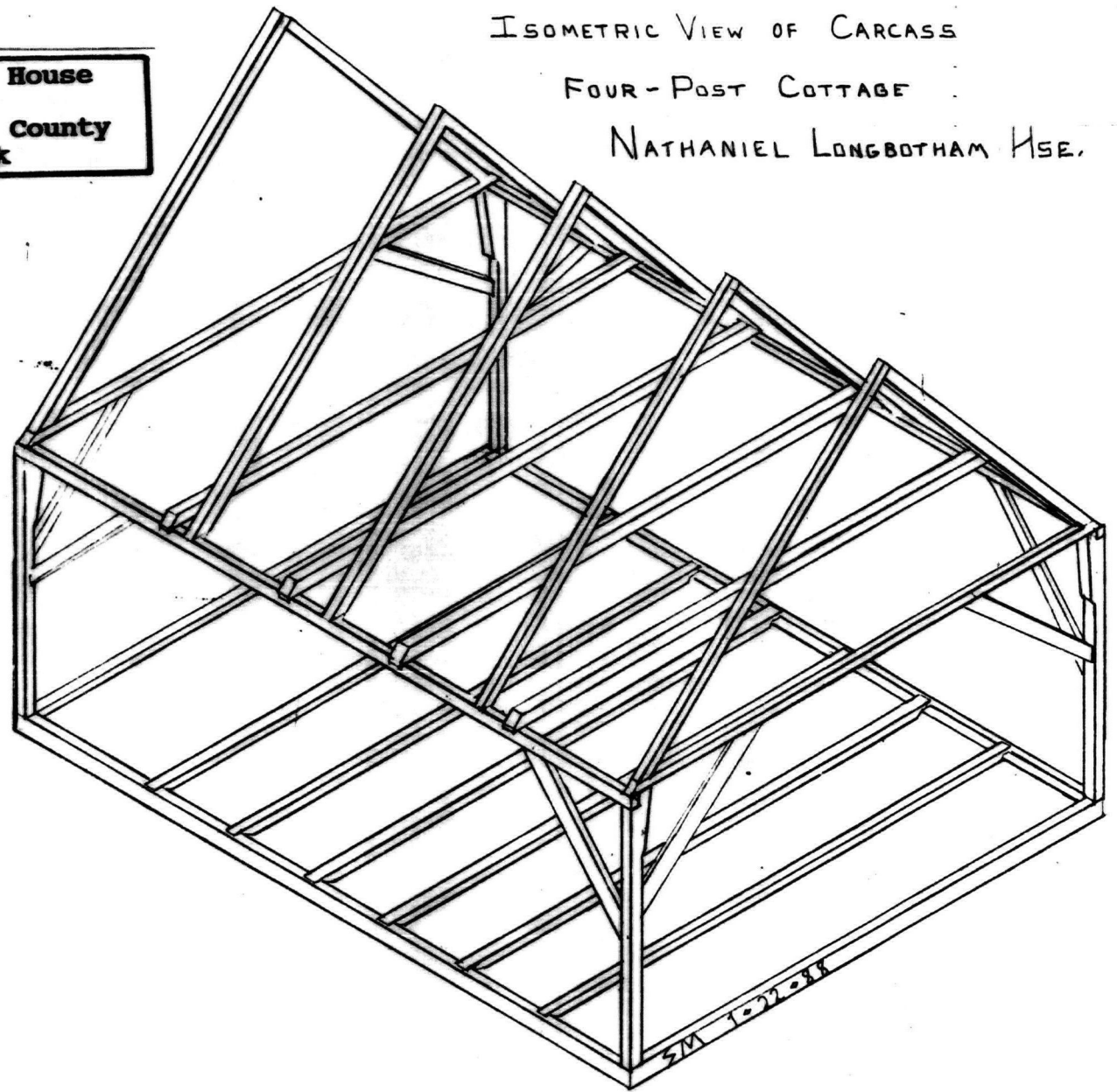
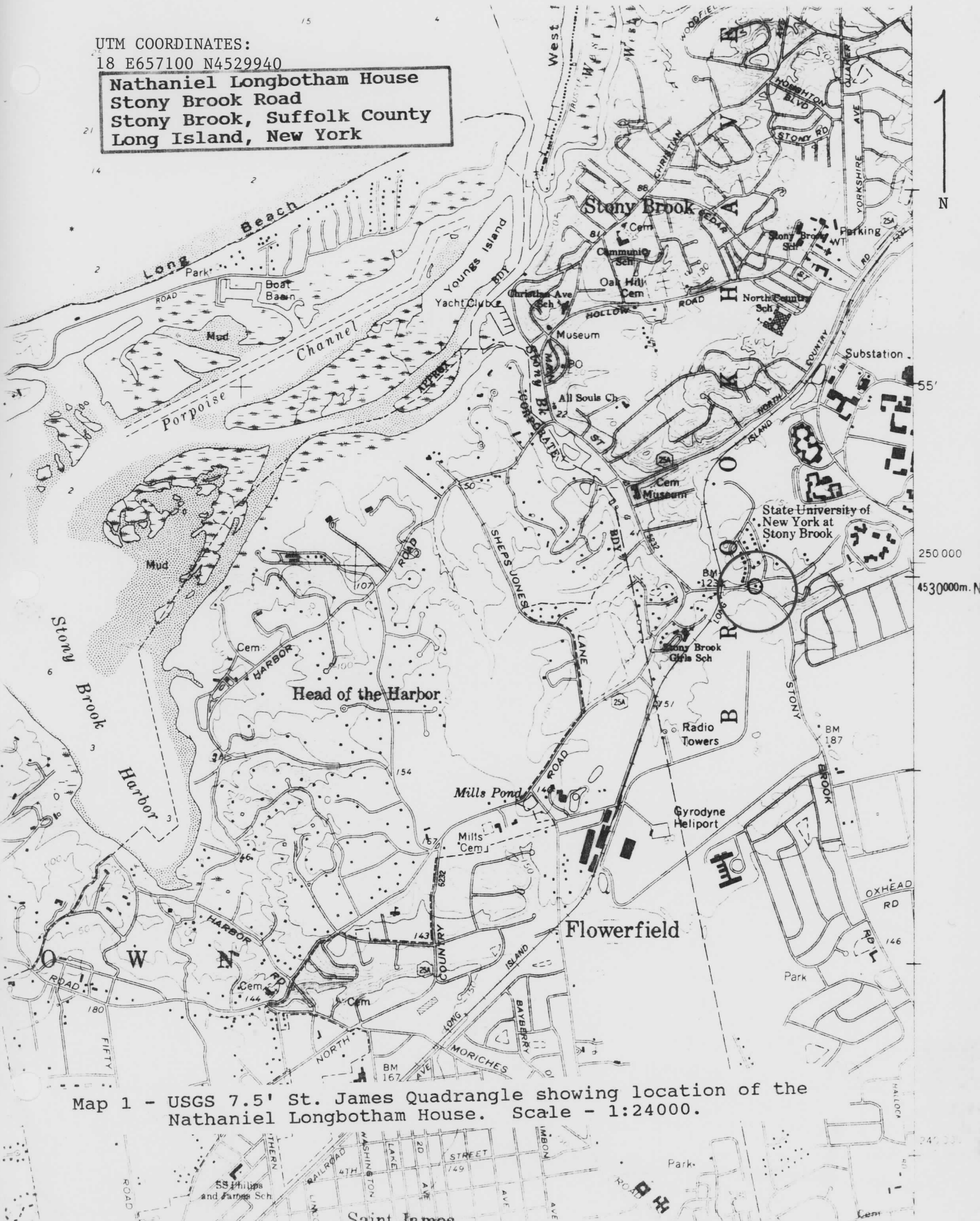


Figure 2 - Framing system of the Nathaniel Longbotham cottage.

UTM COORDINATES:
18 E657100 N4529940

Nathaniel Longbotham House
Stony Brook Road
Stony Brook, Suffolk County
Long Island, New York



Map 1 - USGS 7.5' St. James Quadrangle showing location of the Nathaniel Longbotham House. Scale - 1:24000.

NOV 13 1989

SEE SEC NO 220
MATCH Z LINE

SEE SEC NO 220
MATCH Z LINE



16.7A(c)
STATE UNIV OF NEW YORK

11
37.2A(c)
STATE UNIV OF NEW YORK

**Nathaniel Longbotham House
Stony Brook Road
Stony Brook, Suffolk County
Long Island, New York**

SLATED FOR DEVELOPMENT

Now UNDER DEVELOPMENT (6 HOUSES)

*HALF-ACRE OPEN SPACE (LIMITED)
GATE RECEIVED
SPEED LIMIT*

UNLESS DRAWN OTHERWISE, ALL PROPERTIES ARE WITHIN THE FOLLOWING DISTRICTS:
SCHOOL 1
FIRE 2A1
LIGHT 5.3.1
PAAR
HISTORICAL HSE 8.8
SEWER
HYDRANT
WATER I.L.L.S.
REFUSE

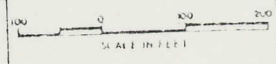
FOR PARCEL NO
SEE SEC NO 213

MATCH Z LINE

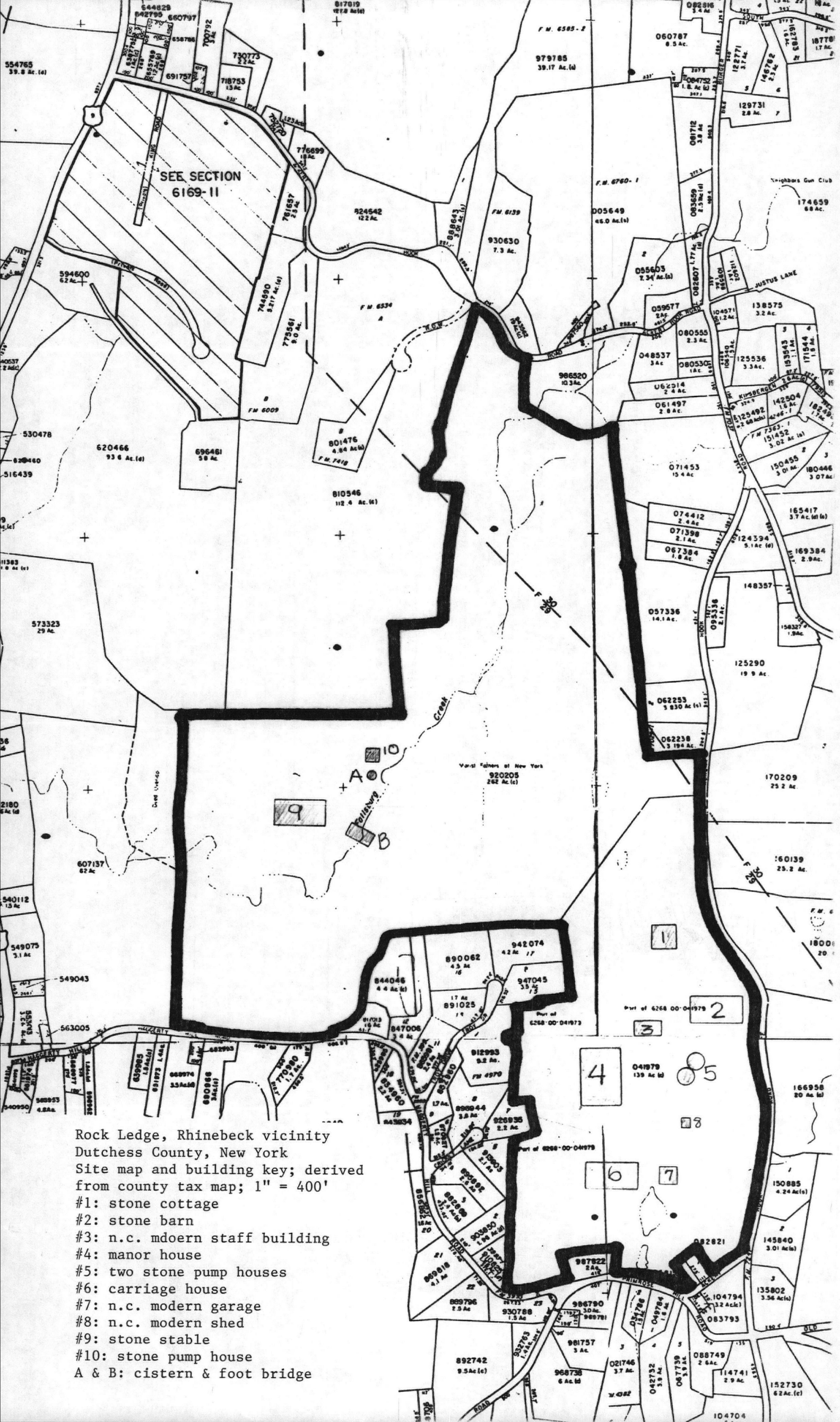
Legend	
Subdivision Lot No.	1-141
Used Dimension	50'
Scaled Dimension	62.5'
Dead Area	12A(10)
Lot Area	2A(11)
Hydrant District Line	11
Refuse District Line	2
Block No.	12
Parcel No.	23
Parcel No.	113

KEY MAP

220	240	247	248
249	247	248	273

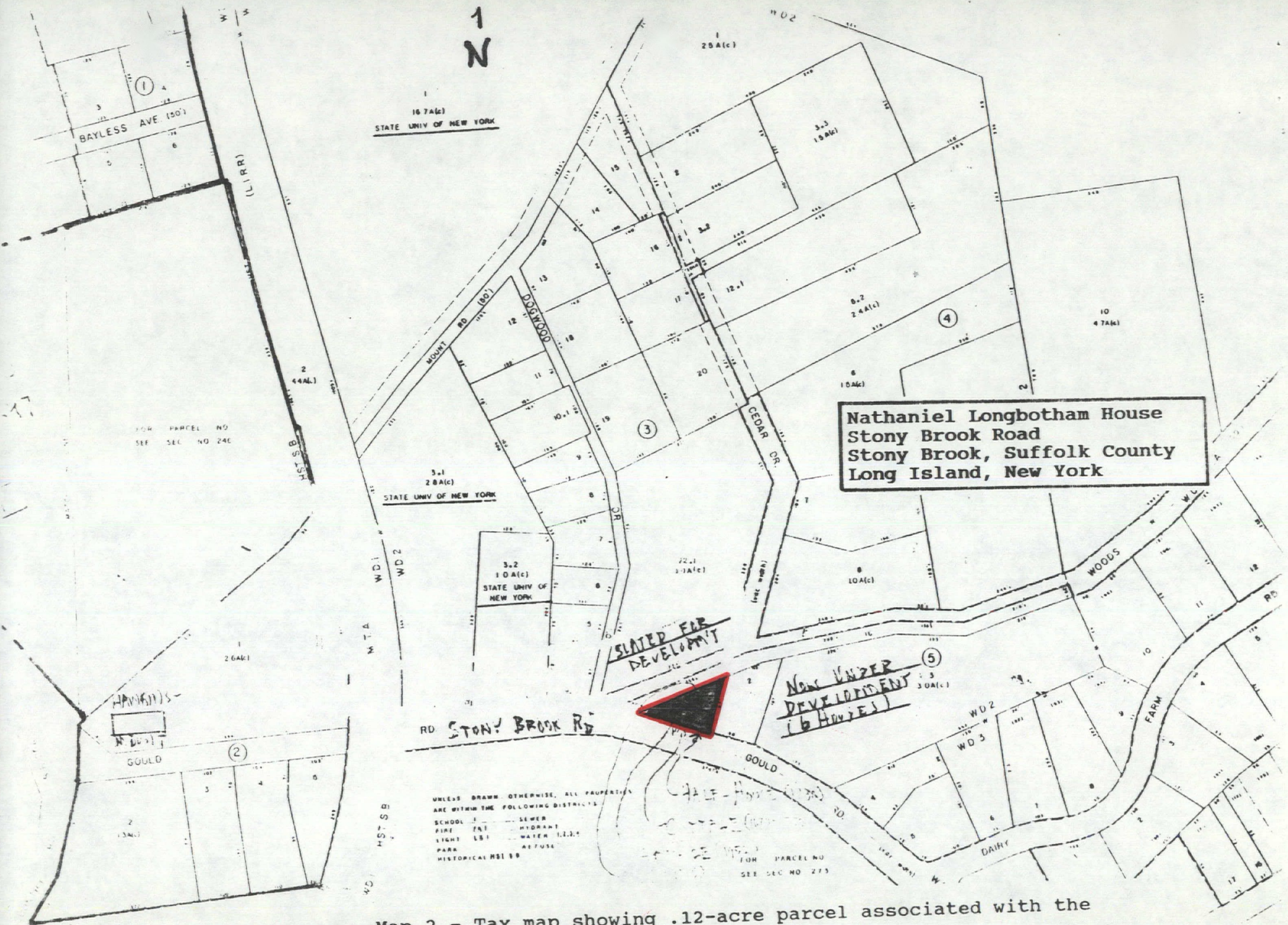


© COUNTY OF SUFFOLK
Real Property Tax Service
County Center
Riverhead, L.I., New York



Rock Ledge, Rhinebeck vicinity
 Dutchess County, New York
 Site map and building key; derived
 from county tax map; 1" = 400'

- #1: stone cottage
- #2: stone barn
- #3: n.c. modern staff building
- #4: manor house
- #5: two stone pump houses
- #6: carriage house
- #7: n.c. modern garage
- #8: n.c. modern shed
- #9: stone stable
- #10: stone pump house
- A & B: cistern & foot bridge



**Nathaniel Longbotham House
Stony Brook Road
Stony Brook, Suffolk County
Long Island, New York**

SLATED FOR DEVELOPMENT

**NOW UNDER DEVELOPMENT
(6 HOUSES)**

UNLESS DRAWN OTHERWISE, ALL PROPERTIES ARE WITHIN THE FOLLOWING DISTRICTS:
 SCHOOL S SEWER S
 FIRE FAI HYDRANT H
 LIGHT LST WATER W
 PARK P AT-RISK A
 HISTORICAL HSI HB

Map 2 - Tax map showing .12-acre parcel associated with the Nathaniel Longbotham House.

Legend

Parcel District Line	1	Highway District Line	11
Water District Line	3	Police District Line	12
Fire District Line	4	Block Line	13

KEY MAP

© COUN
Real Propert
River

UNITED STATES DEPARTMENT OF THE INTERIOR
NATIONAL PARK SERVICE

NATIONAL REGISTER OF HISTORIC PLACES
EVALUATION/RETURN SHEET

REQUESTED ACTION: NOMINATION

PROPERTY Longbotham, Nathaniel, House
NAME:

MULTIPLE
NAME:

STATE & COUNTY: NEW YORK, Suffolk

DATE RECEIVED: 10/17/89 DATE OF PENDING LIST: 10/31/89
DATE OF 16TH DAY: 11/16/89 DATE OF 45TH DAY: 12/01/89
DATE OF WEEKLY LIST:

REFERENCE NUMBER: 89002022

NOMINATOR: STATE

REASONS FOR REVIEW:

APPEAL: N DATA PROBLEM: N LANDSCAPE: N LESS THAN 50 YEARS: N
OTHER: N PDIL: N PERIOD: N PROGRAM UNAPPROVED: N
REQUEST: N SAMPLE: N SLR DRAFT: N NATIONAL: N

COMMENT WAIVER: N

ACCEPT RETURN REJECT 11/16/89 DATE

Entered in the
National Register

ABSTRACT/SUMMARY COMMENTS:

RECOM./CRITERIA _____
REVIEWER _____
DISCIPLINE _____
DATE _____

DOCUMENTATION see attached comments Y/N see attached SLR Y/N

CLASSIFICATION

___ count ___ resource type

STATE/FEDERAL AGENCY CERTIFICATION

FUNCTION

___ historic ___ current

DESCRIPTION

___ architectural classification
___ materials
___ descriptive text

SIGNIFICANCE

Period Areas of Significance--Check and justify below

Specific dates Builder/Architect
Statement of Significance (in one paragraph)

___ summary paragraph
___ completeness
___ clarity
___ applicable criteria
___ justification of areas checked
___ relating significance to the resource
___ context
___ relationship of integrity to significance
___ justification of exception
___ other

BIBLIOGRAPHY

GEOGRAPHICAL DATA

___ acreage ___ verbal boundary description
___ UTMs ___ boundary justification

ACCOMPANYING DOCUMENTATION/PRESENTATION

___ sketch maps ___ USGS maps ___ photographs ___ presentation

OTHER COMMENTS

Questions concerning this nomination may be directed to

_____ Phone _____

Signed _____ Date _____



Nathaniel Longbotham House
1541 Stony Brook Road, Stony Brook
Suffolk County, New York
Photo by: S. Marlens, 1989
Neg.: OPRHP, Albany
Photo No. 1: Front (south) facade of cottage.

Steve Marlens



Nathaniel Longbotham House
1541 Stony Brook Road, Stony Brook
Suffolk County, New York
Photo by: S. Marlers, 1989
Neg.: OPRHP, Albany
Photo No. 2: Front (south) facade of half-house.

Steve Marlers



Nathaniel Longbotham House
1541 Stony Brook Road, Stony Brook
Suffolk County, New York

Photo by: S. Marlens, 1989

Neg.: OPRHP, Albany

Photo No.3: Side (east) elevation of cottage with
contributing shed in rear.

Steve Marlens



Nathaniel Longbotham House
1541 Stony Brook Road, Stony Brook
Suffolk County, New York
Photo by: S. Marlens, 1989
Neg.: OPRHP, Albany
Photo No. 4: Rear (north) elevation of Half-house
and cottage.

Steve Marlens



Nathaniel Longbotham House
1541 Stony Brook Road, Stony Brook
Suffolk County, New York
Photo by: S. Marlens, 1989
Neg.: OPRHP, Albany
Photo No. 5: Interior view of half-house fireplace.

Steve Marlens



Nathaniel Longbotham House
1541 Stony Brook Road, Stony Brook
Suffolk County, New York
Photo by: S. Marlens, 1989
Neg.: OPRHP, Albany
Photo No. 6: Interior view of half-house loft.

Steve Marlens



Nathaniel Longbotham House
1541 Stony Brook Road, Stony Brook
Suffolk County, New York
Photo by: S. Marlens, 1989
Neg.: OPRHP, Albany
Photo No. 7: Interior view of cottage fireplace.

Steve Marlens



NEW YORK STATE
DEPARTMENT OF TRANSPORTATION

SAINT JAMES QUADRANGLE
NEW YORK-SUFFOLK CO.
7.5 MINUTE SERIES



GREENLAWN

Prepared and published in 1981 by the New York State Department of Transportation, in cooperation with the U.S. Department of Transportation, Federal Highway Administration.

Map base from 1967 U.S. Geological Survey 7.5-minute quadrangle.

Map revisions made using 1980 aerial photography, construction plans, official records and other sources. Features revised include: highways and other transportation facilities; civil boundaries; recreation sites; hydrography; and buildings. Grey tint indicates intensely developed areas in which only landmark buildings are shown.

Revisions may not comply with National Map Accuracy Standards.

Correspondence concerning this and other maps of the Department of Transportation should be directed to: Map Information Unit, New York State Department of Transportation, State Campus, Albany, New York 12232.

1981 revisions by T. D. Oare and A. Getson



Polyconic projection, 1927 North American datum.

1000-meter ticks based on the New York Transverse Mercator grid. Between 72° and 78° West Longitude, this grid is identical to Zone 18 of the Universal Transverse Mercator grid. Areas east of 72° and west of 78° are direct mathematical extensions of Zone 18.

10,000-foot ticks based on the New York Plane Coordinate grid, Long Island Zone.

Magnetic declination for 1981 is approximately 10° West

SPECIAL TOPOGRAPHIC EDITION

Contours, at 10-foot intervals, shown unrevised from 1967 U.S. Geological Survey map. Datum is mean sea level.

INDEX TO 1:9600 (1" = 800') MAP COVERAGE

SAINT JAMES (1981)
SAINT JAMES (1967)

BOUNDARIES:

State.....	-----
County.....	-----
Town or City.....	-----
Incorporated Village.....	-----

ROADS:

Touring Route markers:	Divided highways and streets:
Interstate.....	Wide mall.....
U. S.	Narrow mall or barrier.....
State.....	Undivided highways and streets:
County.....	4 or more lanes.....
State Highway number and limit.....	Less than 4 lanes.....
County road.....	Vehicle track; trail.....
Interchange number.....	

NATHANIEL LONGFORTH HOUSE
1541 STONY BROOK ROAD, STONY BROOK
SUFFOLK COUNTY, LONG ISLAND, NEW YORK
USGS 7.5' SAINT JAMES QUADRANGLE
SCALE - 1:24000
UTM COORDINATES: 18 E657100 N4529940



New York State Office of Parks, Recreation and Historic Preservation

The Governor Nelson A. Rockefeller Empire State Plaza
Agency Building 1, Albany, New York 12238-0001

NOV 13 1989

November 6, 1989

Ms. Delores Byers
National Park Service
Interagency Register Division (413)
P. O. Box 37127
Washington, D. C. 20013-7127

Dear Ms. Byers:

Enclosed as requested are the tax maps for the following:

Rock Ledge, Dutchess County

Nathaniel Longbotham House, Suffolk County

If you have any questions or require additional materials please feel to contact me at (518) 474-0479.

Sincerely,

Linda S. Abston
Senior Clerk

enc.