



BUILDING-STRUCTURE INVENTORY FORM

NYS OFFICE OF PARKS, RECREATION & HISTORIC PRESERVATION
DIVISION FOR HISTORIC PRESERVATION
(518) 474-0479

FOR OFFICE USE ONLY	
UNIQUE SITE NO.	_____
QUAD	_____
SERIES	_____
NEG. NO.	_____

YOUR NAME: Melodye K. Moore DATE: 10/88
P.O. Box 88
 YOUR ADDRESS: Poughkeepsie, NY 12602 TELEPHONE: (914) 471-1630
 ORGANIZATION (if any): Dutchess County Historical Society

IDENTIFICATION

Component 2

1. BUILDING NAME(S): Nine Partners Meeting House and cemetery
2. COUNTY: Dutchess TOWN/CITY: Washington VILLAGE: Millbrook
3. STREET LOCATION: Route 343
4. OWNERSHIP: a. public b. private
5. PRESENT OWNER: Nine Partners Burial Ground Asso. ADDRESS: Box 662, Millbrook, NY 12545
6. USE: Original: Meeting house/cemetery Present: Meeting house/cemetery
7. ACCESSIBILITY TO PUBLIC: Exterior visible from public road: Yes No
Interior accessible: Explain by appointment

DESCRIPTION

8. BUILDING MATERIAL: a. clapboard b. stone c. brick d. board and batten
e. cobblestone f. shingles g. stucco other: _____
9. STRUCTURAL SYSTEM: (if known) a. wood frame with interlocking joints (roof)
b. wood frame with light members
c. masonry load bearing walls
d. metal (explain) _____
e. other _____
10. CONDITION: a. excellent b. good c. fair d. deteriorated
11. INTEGRITY: a. original site b. moved if so, when? _____
c. list major alterations and dates (if known): Unknown date: narthex partitioned from interior space.
1970s: gutters added.
1980: new roof.

12. PHOTO:

13. MAP:

(also see continuation sheet)

Property boundary and U.S.G.S. maps attached

photos by: Neil Larson
 (unless otherwise noted)
 Dutchess County Historical Society
 549 Main Street, P.O. Box 88
 Poughkeepsie, NY 12602

14. THREATS TO BUILDING: a. none known b. zoning c. roads
 d. developers e. deterioration
 f. other: _____
15. RELATED OUTBUILDINGS AND PROPERTY:
 a. barn b. carriage house c. garage c and e
 d. privy e. shed f. greenhouse non-contributing
 g. shop h. gardens
 i. landscape features: cemetery-contributing
 j. other: well pump, original sundial-contributing
16. SURROUNDINGS OF THE BUILDING (check more than one if necessary):
 a. open land b. woodland
 c. scattered buildings
 d. densely built-up e. commercial
 f. industrial g. residential
 h. other: _____

17. INTERRELATIONSHIP OF BUILDING AND SURROUNDINGS:
 (Indicate if building or structure is in an historic district)

See continuation sheet.

18. OTHER NOTABLE FEATURES OF BUILDING AND SITE (including interior features if known):

See continuation sheet.

SIGNIFICANCE

19. DATE OF INITIAL CONSTRUCTION: 1780

ARCHITECT: function carried out by meeting

BUILDER: unknown

20. HISTORICAL AND ARCHITECTURAL IMPORTANCE:

See continuation sheet.

21. SOURCES: see Cover form, Bibliographical References #9.

22. THEME: Dutchess County Quaker Meeting Houses.

17. Interrelationship of Building and Surroundings.

Located in a rural setting on the outskirts of the Village of Millbrook near the junction of Route 343 and Church Street in a small neighborhood containing both nineteenth and twentieth century structures. The meeting house is sited in the southeast corner of the nominated property containing nine acres. The cemetery, which contributes to the significance of the property, extends outward from the building to the west and to the north. The front lawn of the property descends gently to the road on the south. The south property line is defined by a fence with brick entrance gates. The nominated boundaries conform to the original limits of the lot.

Contributing buildings: 1

Structures: 1

Objects: 1

Buildings: 2

Contributing sites: 1

Non-contributing sites: 1

18. Other Notable Features of Building and Site.

The Nine Partners Meeting House is a two-story gable-roofed building constructed of brick laid up in Flemish bond on the principal (south) facade and common on other elevations. Fenestration on the first floor of the main (south) facade which is parallel to the ridge lines consists of two side-by-side units of a central door flanked by two windows. This pattern is identical to that of the meeting houses at Oswego, Crum Elbow, Beekman and Stanford. Second story windows are located directly above those of the first floor. The first floor openings are surmounted by suppressed relieving arches. This fenestration is reproduced on the rear facade of the building. The gable ends are both pierced by two windows on each floor. All the windows (12 over 12) have three-panel shutters. The shutters, doors, and window sash are all painted white. The two rear doors, intended as carriage entrances, are placed extraordinarily high in the wall, even with the floor level of the top rising bench. The interior is divided into two meeting spaces by a central partition composed of rectangular panelled units hung so that they can be raised or lowered in a sash fashion. A partitioned gallery, conforming to the division of space in the first floor, extends from east, west and south walls. The gallery benches are tiered to allow uninterrupted vision. As was the case at Creek Meetinghouse, the open area created by the gallery was constructed to allow it to be closed off by a plants and timber deck when not in use. Unique to Nine Partners Meeting House is a long, narrow vestibule created by a board partition erected parallel to the front (south) wall. The space is not an original feature. The vestibule has doorways into each side of the ground floor meeting space and incorporates the

Continuation Sheet

Dutchess County Quaker Meeting Houses Thematic Resources

Nine Partners Meeting House and Cemetery

Millbrook, Dutchess County, New York

Page 3

entrances to the enclosures in the southeast and southwest corners containing two-run stairs that lead to the partitioned gallery. The location of the stairs in corners of the outside walls is similar to both Oblong and Creek Meeting Houses. The interior wall treatment combines whitewashed plaster walls and unpainted horizontal wideboard panelling. Columns within this building are rounded rather than chamfered as is the case in all of the other meetinghouses. Nine Partners Meeting House retains its original stoves and the original benches, arranged in the traditional configuration.

The cemetery is fairly large in relation to other burial grounds associated with meeting homes and encompasses approximately twelve acres and contains hundreds of stones. The earliest stones, dated in the late eighteenth century with the meeting house, are concentrated near to the building southwest of the circular roadway that approaches the south facade. The well and pump are also in this area (the sundial is central in the driveway). As the cemetery emanates to the north and west of the meeting house, the stones become later and more typical of mainstream taste in the mid and late nineteenth century. Nevertheless, Quaker names predominate and the trend away from the plain markers is evidence of the continual paradox of Quaker life and the gradual lessening of self-restraint as the century went on. The cemetery contains Orthodox Quakers as well, who became more conventional in their attitudes about religion and life. Therefore, at a certain point, the Nine Partners Burial Ground becomes indistinguishable from most other small rural or church burial grounds of the period with a modest but eclectic array of Victorian grave stone types popular in the period and available from local tradesmen. The undulating landscape is distinguished by mature trees, winding roadways and well-kept lawns.

20. The Nine Partners Meeting House.

The Nine Partners Meeting House is architecturally and historically significant as an outstanding example of a traditional Quaker meeting house that recalls the growth and development of the Society of Friends in Dutchess County. The Nine Partners meeting is one of the oldest Quaker settlements in the country, having been established almost simultaneously with the first Quaker settlement at Oldong (c. 1740's). Nine Partners became one of the largest and most influential meetings in the region, spawning numerous other meetings in Dutchess and Orange Counties and serving as a central meeting place for Friends from more remote regions. The first two meeting houses at South Millbrook were constructed in 1745 and 1751. The present building, completed in 1780, embodies the distinctive characteristics of the fully developed, traditional Quaker meeting house form, including a balanced, symmetrically composed primary facade oriented to the ridge line of the gable roof with double entrances on the exterior and a fully fenestrated, divided meeting room on the interior with entrances on the exterior and movable partitions, a raised platform for furing benches and a complement of narrow upright benches in an intact arrangement. Historic stoves and lighting also survive. This building is also particularly

Continuation Sheet

Dutchess County Quaker Meeting Houses Thematic Resources

Nine Partners Meeting House and Cemetery

Millbrook, Dutchess County, New York

Page 4

distinctive within the group of Dutchess County meeting houses for its unusual large size, brick construction and refined architectural detail, all reflecting the prosperity of its members, who were generally considered less detached and more worldly than other Friends communities, and the prominent status of the quarterly meeting in the Quaker social and religious network. The Nine Partners Meeting House is an outstanding example of Quaker architecture and dramatically illustrates the extent to which the Friends' idea of planners could be expressed in a highly sophisticated and powerful stylistic statement. Although pretentious in the local Quaker context, the building is conspicuously restrained. The interplay of skilled craftsmanship revealed in the precise masonry, the monumental scale, and the highly tooled woodwork--and the stark absence of decoration is very effective in demonstrating the aesthetic legitimacy of the testimony of planners and thereby its intellectual and moral legitimacy as well.

Yet the growing interaction between Friends and the rest of the world as witnessed in the New Partners community led to tension within the society.

In 1828, the Society of Friends separated into two groups: Hicksites, who continued to adhere to traditional Quaker practices, and Orthodox, who were influenced by nineteenth-century evangelical revivals and eventually adopted many traditions and religious practices associated with protestant sects (including more highly developed churchlike architectural forms). The Nine Partners Meeting House was retained by Hicksite Quakers; however, the membership of the meeting dwindled throughout the nineteenth century. Today the building continues to be used by Friends for special services, thus retaining a continuing link with this important Quaker settlement. The adjacent cemetery has been greatly enlarged beyond its initial concentration of Friends burials and has long been maintained by a non-Quaker association; however, local Quakers continued to be buried there into the twentieth century and although it has acquired a picturesque appearance continues as a representation of the Quaker presence in the community and as an appropriate setting for the meeting house.

Quakers settled in South Millbrook, once called Mechanic, as early as the 1740's, almost simultaneously with the Oblong Area. In 1744 the Purchase quarterly meeting set up the first monthly meeting north of the Putnam Highlands and entitled it "Oblong and Nine Partners." The monthly meeting thereafter met alternately at the two locations. The Oblong and Nine Partners Monthly Meeting was divided in 1769 and each became a monthly meeting in its own right. Nine Partners would later become a quarterly meeting.

As a monthly and quarterly meeting Nine Partners became important within the network of Dutchess County meetings and was the "mother" of numerous other meetings. Meetings that were "allowed" by Nine Partners and attached to it as preparative meetings (eventually becoming monthly meetings in their own right) included: Oswego, Creek, and North East in Dutchess County, New Cornwall and New Marlborough in Orange County; Saratoga and East Hoosick in Washington

Continuation Sheet

Dutchess County Quaker Meeting Houses Thematic Resources

Nine Partners Meeting House and Cemetery

Millbrook, Dutchess County, New York

Page 5

County; and Adolphus Town in Ontario, Canada. The connections included organizational assistance and supervision and frequently members of the "mother" meeting removed to these locations. In addition to these meetings, many Nine Partners Friends moved from Dutchess County to other Friends' centers to the north and west, particularly in the Rochester area.

As was typically the case, the first Friends to arrive in the area had their meetings in private homes. The first meeting house to serve Nine Partners Friends was built in 1745 on six acres of land conveyed to the Meeting by Aaron Haight. This first meeting house, constructed of logs, was replaced in 1751. The second meeting house burned late in 1778 and Friends began to discuss a new meetinghouse. Plans were made and approval was received from the Quarterly meeting to build a house forty feet by fifty feet with twenty inch walls at an estimated cost of 600 pounds. At the time of the completion of the exterior, with no interior work done, the building had already cost 1151 pounds. Some of the overrun may be attributable to the inexperience of local Friends in building with brick.

The meeting house was completed in 1780, that date being recorded in the brick in the rear facade. The finished structure, estimated to be able to seat 1,000 people, was constructed mostly of local materials. All the iron work, including the nails, are reputed to have been made by a local smith and the bricks are said to have been made from clay in the locality. The stoves which heated the building were cast locally and the sundial on the south side of the meeting house was designed by Friend Jacob Willets and cast by John H. Wing.

The finished meeting house was a symbol of the prosperity and importance of the Nine Partners Friends. As a monthly and quarterly meeting it was the place where Friends from all over the region would gather to conduct business. This of course, necessitated the unusually large size of the building. It is probable, too, that the Nine Partners Friends, who already had a reputation for some degree of pretention, would be more than usually concerned with the appearance and quality of the building. While it conforms to the traditional style, it is more refined and more attention is given to detail.

The Nine Partners area was unique in early Dutchess County Quaker history in that it was not remote and isolated. Adjacent to the Friends community were two other small communities that were more "worldly." Attitudes of withdrawal that prevailed in more rural Quaker communities did not survive intact at Nine Partners and Friends of this meeting entered strongly into the business life of the area. Nine Partners Friends such as the Harts, Lanes, and Merritts later moved to Poughkeepsie as it developed as the county center for business and industry. The business success of the Nine Partners Friends led to the acquisition of moderate wealth and affluence, a condition that set them apart from the rest of the Quaker community. Travelling Friends' ministers were often shocked at the luxury of these Friends' homes and warned of the dangers of worldliness and neglect of spiritual concerns.

Continuation Sheet

Dutchess County Quaker Meeting Houses Thematic Resources

Nine Partners Meeting House and Cemetery

Millbrook, Dutchess County, New York

Page 6

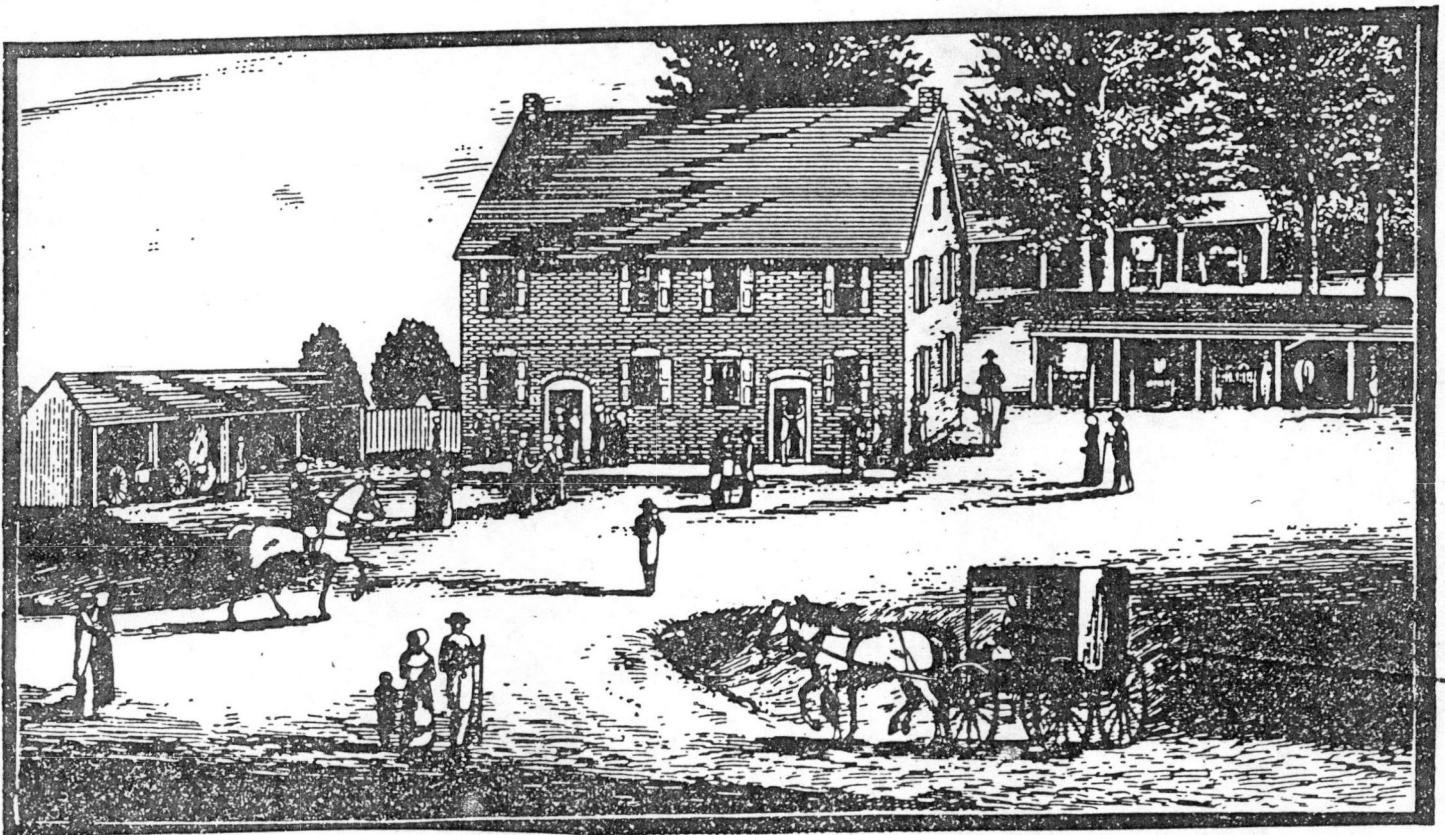
At the time of the Separation (1828), the meeting house was retained by the Hicksites. By the late nineteenth century their membership had dwindled and they could no longer maintain the building and its adjoining cemetery. In 1897 the property was transferred to the Nine Partners Burial Association who agreed to preserve the building "after the manner of a Friends' Meeting House, in present simplicity within and without." Friends have continued use of the building for meetings and special services and have continued to bury their dead in the cemetery.

A significant building no longer standing that was associated with the Nine Partners Meeting was the Nine Partners School. The building, a remodeled and enlarged store, stood to the east of the meeting house. Opened in 1796, it was known as one of the finest Boarding Schools in the country. Notable among the students who attended the Nine Partners Boarding school were Lucretia Coffin Mott and Daniel Anthony, the father of Susan B. Anthony.

Dutchess County Quaker Meeting Houses Thematic Resources
Nine Partners Meeting House and Cemetery
Millbrook, Dutchess County

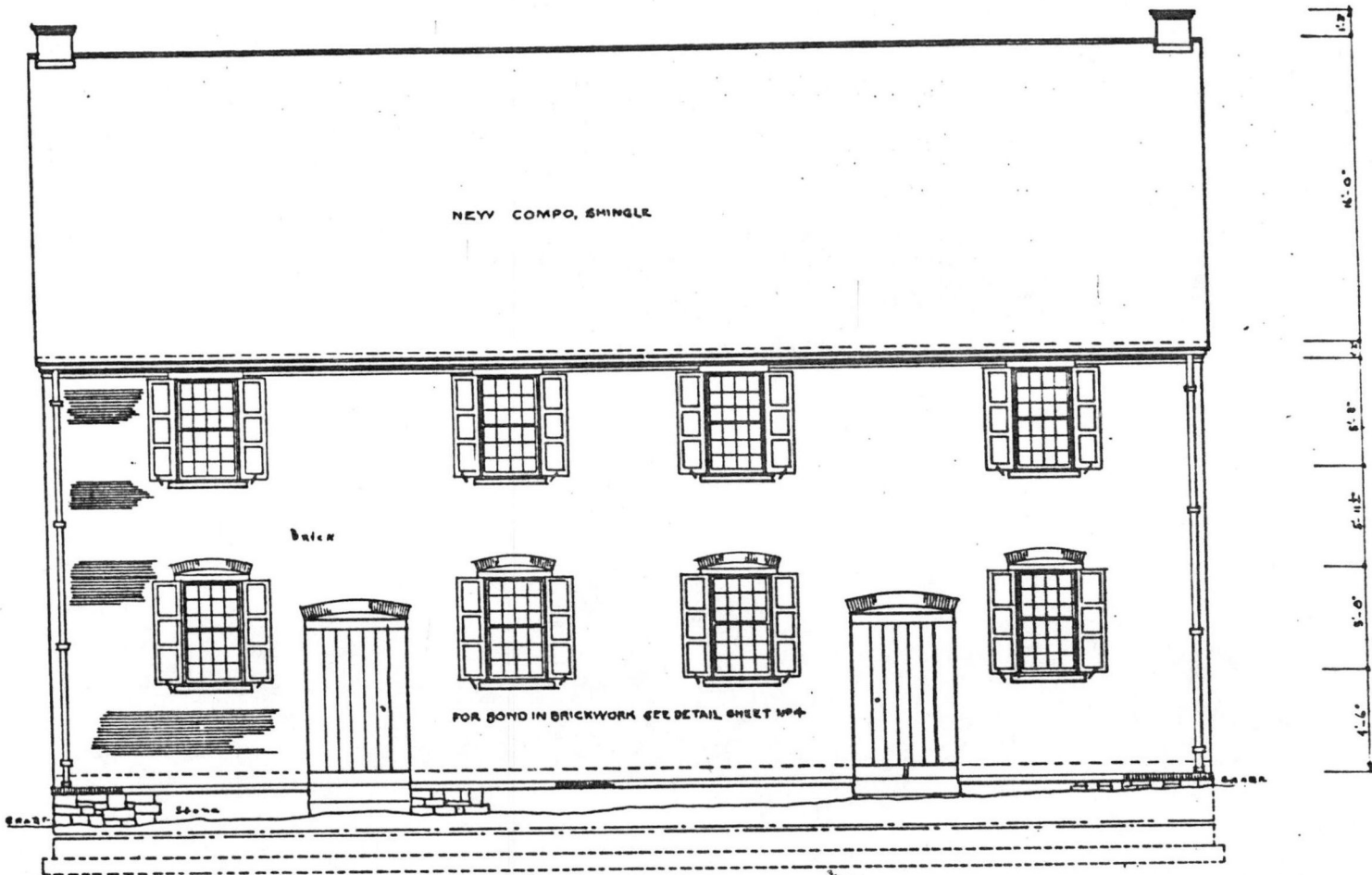
Drawing of Nine Partners Meeting House, n.d.
in Poughkeepsie Journal 6-28-81

Journal Historic Dutchess County Sunday, June 28, 1981



NINE PARTNERS MEETING HOUSE IN MILLBROOK: The Nine Partners Meeting House in the Village of Millbrook was constructed in 1780 after the destruction by fire of the first meetinghouse. The Nine Partners Boarding School, which was associated with the meeting, was opened in 1796 and was long recognized as an outstanding institution. Oakwood School is the successor of the Nine Partners School now demolished.

Millbrook



SOUTH ELEVATION
SCALE 1/4" = 1'-0"

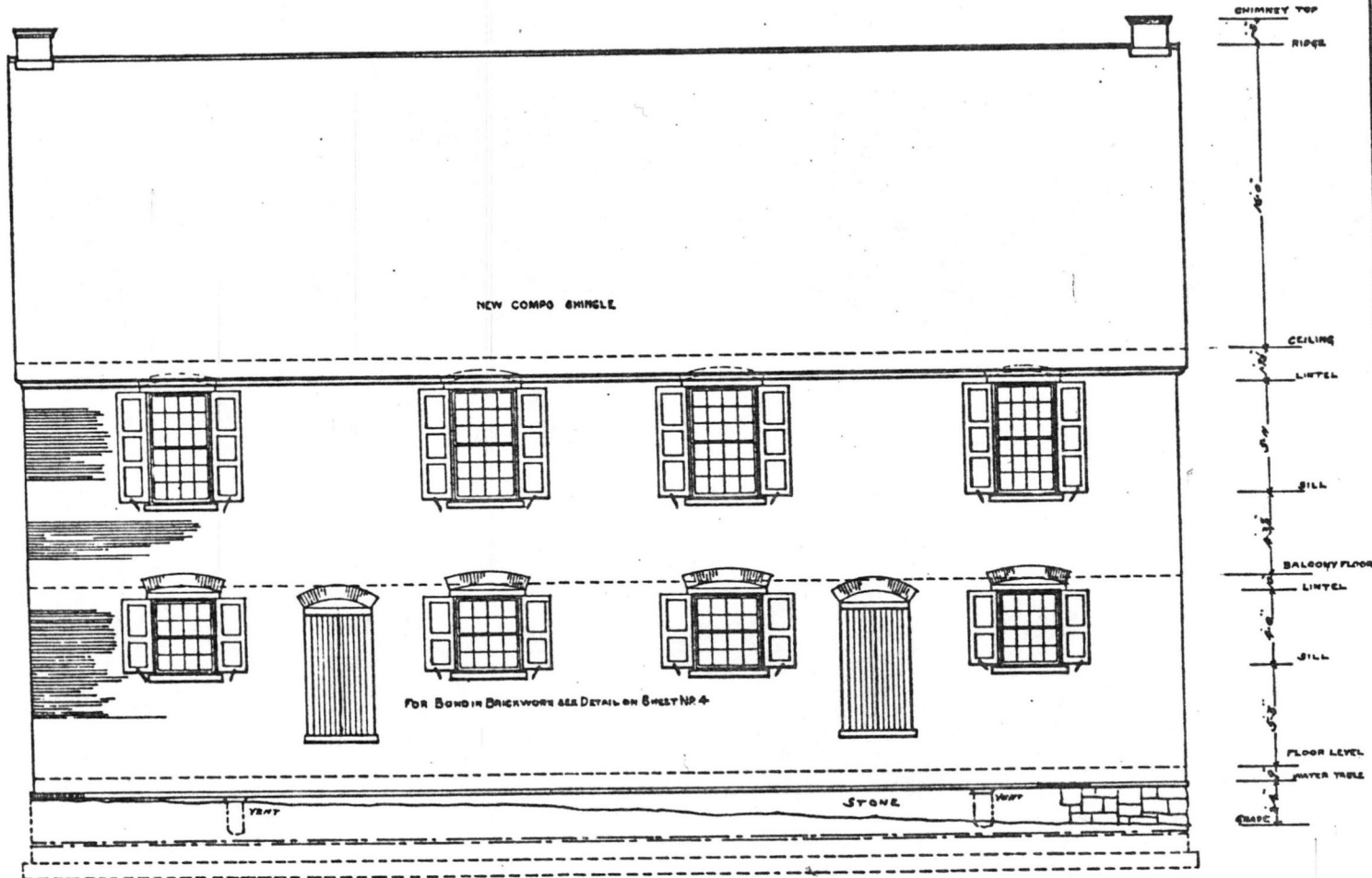
SCALE 1/4" = 1'-0"
METRIC SCALE

GEORGE FETTES DEL.
ALBERT ARBUCKLE DEL.

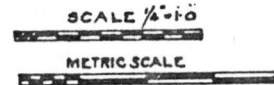
HISTORIC AMERICAN BUILDINGS SURVEY OP263-6907 <small>UNDER DIRECTION OF UNITED STATES DEPARTMENT OF THE INTERIOR NATIONAL PARK SERVICE, BRANCH OF PLANS AND DESIGN</small>	NAME OF STRUCTURE NINE PARTNERS MEETING HOUSE MILLBROOK DUTCHESS COUNTY NEW YORK	SURVEY NO. N.Y. 4129	HISTORIC AMERICAN BUILDINGS SURVEY SHEET 3 OF 8 SHEETS	<small>DATE OF DRAWING</small> <small>SCALE</small>
--	---	-------------------------	--	--

*Dutchess Co. Quaker Meeting House TR
Nine Partners Meeting House
Millbrook, Dutchess Co.*

Handwritten note: 1/2" = 1'-0"



NORTH ELEVATION
SCALE 1/2" = 1'-0"



GEORGE FETTES DEL.
ALBERT ARBUCKLE DEL.

HISTORIC AMERICAN
BUILDINGS SURVEY O.P. 265-6907
UNDER DIRECTION OF UNITED STATES DEPARTMENT OF THE INTERIOR
NATIONAL PARK SERVICE, BRANCH OF PLANS AND DESIGN

NAME OF STRUCTURE
NINE PARTNERS MEETING HOUSE
MILLBROOK DUTCHESS COUNTY NEW YORK



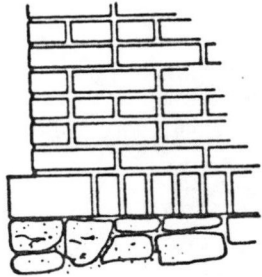
SURVEY NO.
NY.4129

HISTORIC AMERICAN
BUILDINGS SURVEY
SHEET 6 OF 8 SHEETS

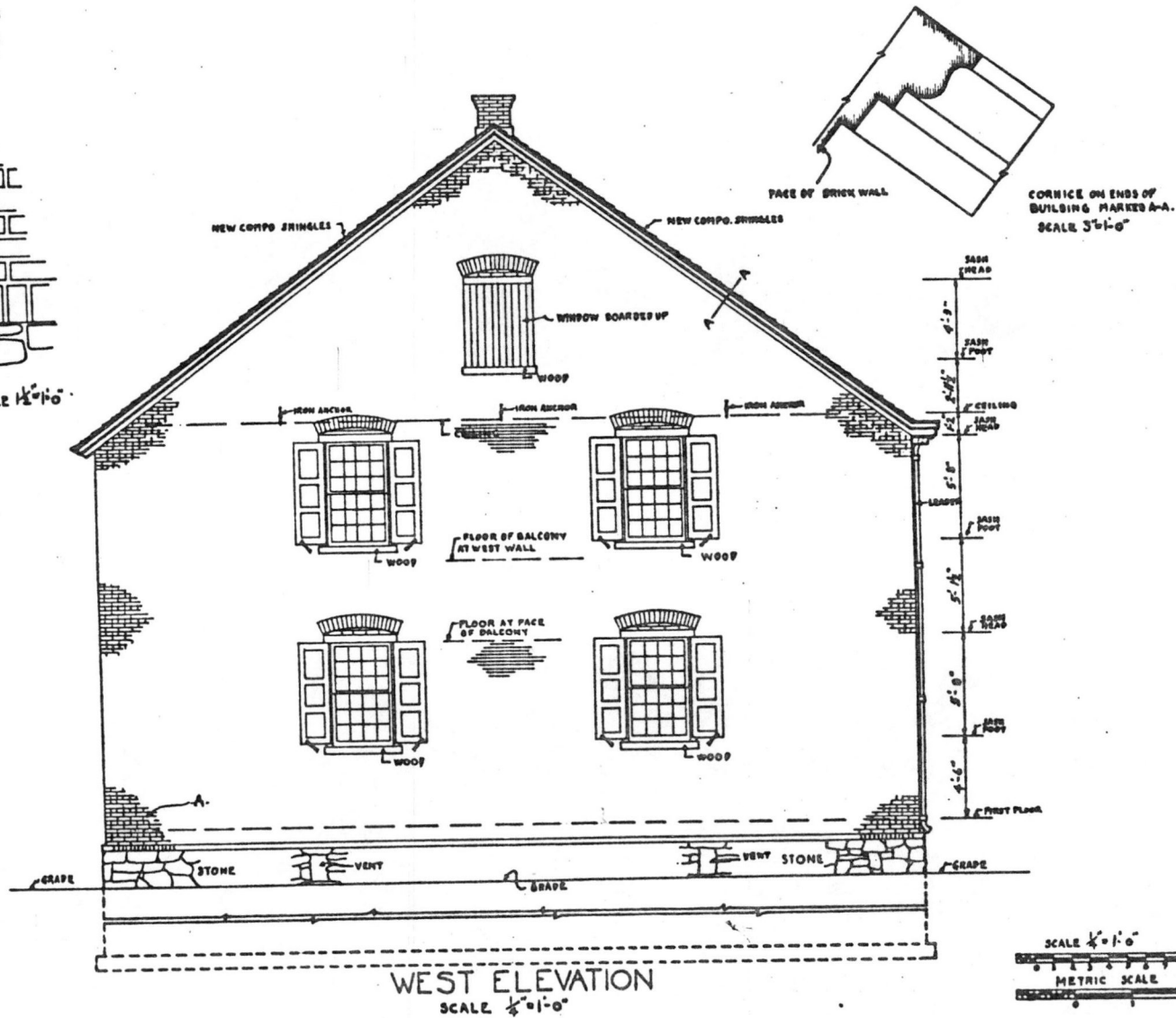
UNIVERSITY OF MICHIGAN
LIBRARY

Handwritten note: Dutchess County Quaker Meeting Hse
Nine Partners Meeting House
Millbrook, Dutchess Co

NOTE
 BRICK ON THIS ELEVATION
 ARE LAYED TWO STRETCHER
 AND ONE HEADER COURSE
 WITH ONE HALF INCH JOINTS
 OF ORIGINAL LIME MORTAR



A-A ELEVATION SCALE 1/2"=1'-0"



ALBERT ARBUCKLE DEL.

HISTORIC AMERICAN
 BUILDINGS SURVEY O.P. 265 - 6907
UNDER SUPERVISION OF OFFICE OF THE SECRETARY OF THE INTERIOR
 NATIONAL PARK SERVICE, DIVISION OF PLANS AND SPECIFICATIONS

NAME OF STRUCTURE
NINE PARTNERS MEETING HOUSE
 MILLBROOK DUTCHESS COUNTY NEW YORK

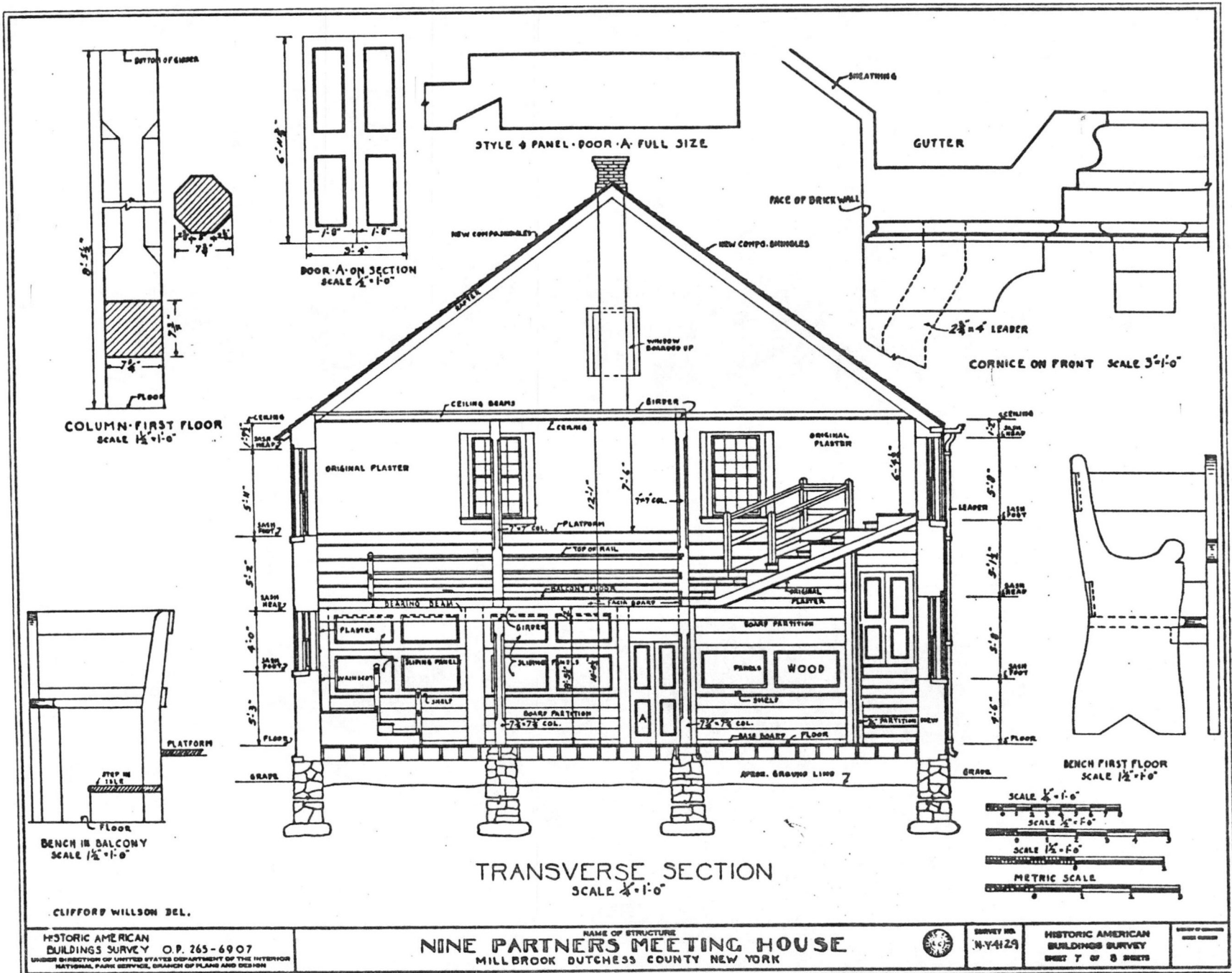


SURVEY NO.
 124

HISTORIC AMERICAN
 BUILDINGS SURVEY
 SHEET 4 OF 8 SHEETS

DATE OF CONSTRUCTION
 1742

Dutchess Co. Quaker Meeting Houses T R
 Nine Partners Meeting House
 millbrook, Dutchess Co.



HISTORIC AMERICAN BUILDINGS SURVEY O.P. 265-6907
 UNDER SUPERVISION OF UNITED STATES DEPARTMENT OF THE INTERIOR
 NATIONAL PARK SERVICE, BRANCH OF PLANS AND DESIGN

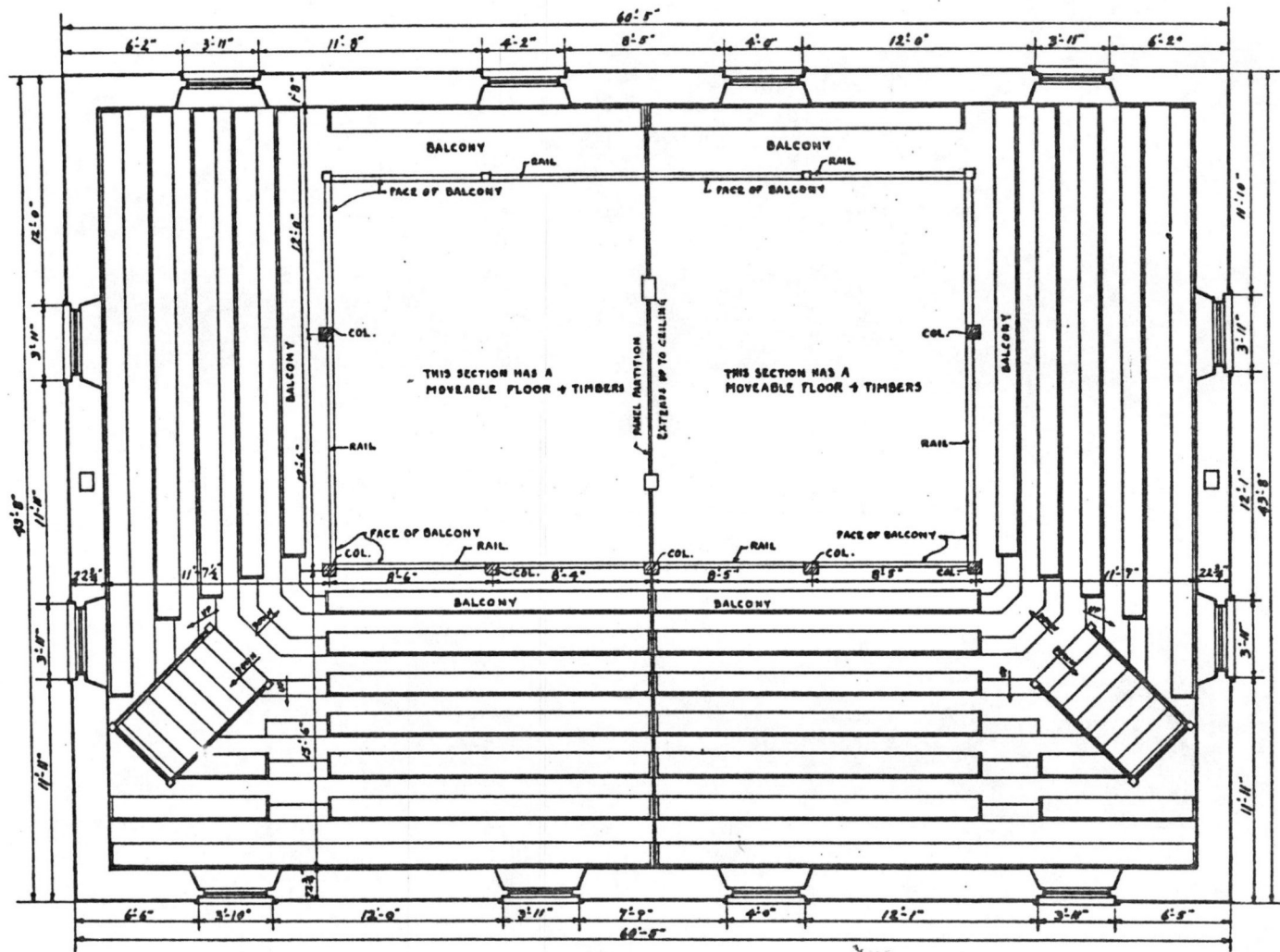
NAME OF STRUCTURE
NINE PARTNERS MEETING HOUSE
 MILLBROOK DUTCHESS COUNTY NEW YORK



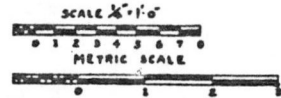
SURVEY NO.
 N.Y. 4129

HISTORIC AMERICAN BUILDINGS SURVEY
 SHEET 7 OF 8 SHEETS

*Dutchess County Quaker Meeting House TR
 Nine Partners Meeting House
 Millbrook, Dutchess Co.*



SECOND FLOOR PLAN
SCALE $\frac{1}{4}'' = 1'-0''$



CLIFFORD WILLSON DEL.

HISTORIC AMERICAN OR 265 - 6907
BUILDINGS SURVEY
UNDER DIRECTION OF UNITED STATES DEPARTMENT OF THE INTERIOR
NATIONAL PARK SERVICE, BRANCH OF PLANS AND DESIGN

NAME OF STRUCTURE
NINE PARTNERS MEETING HOUSE
MILLBROOK DUTCHESS COUNTY NEW YORK

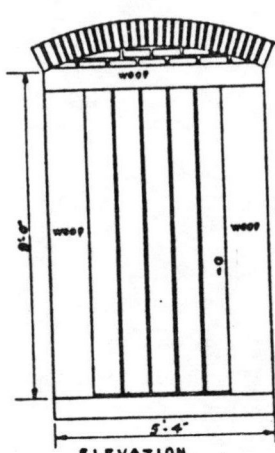


SURVEY NO.
N.Y. 4129

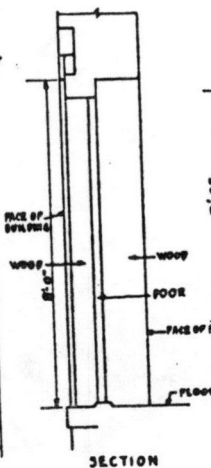
HISTORIC AMERICAN
BUILDINGS SURVEY
SHEET 2 OF 6 SHEETS

UNIVERSITY OF MICHIGAN
LIBRARY

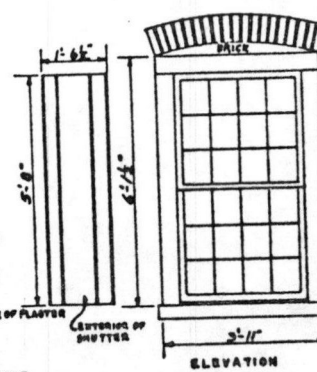
Dutchess County Quaker Meeting House TR
Nine Partners Meeting House
Millbrook, Dutchess Co.



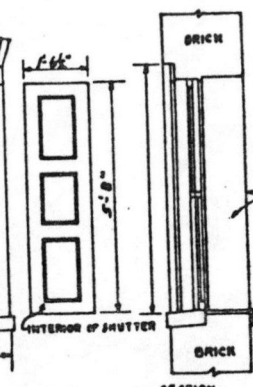
ELEVATION



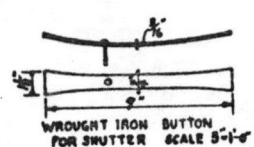
SECTION



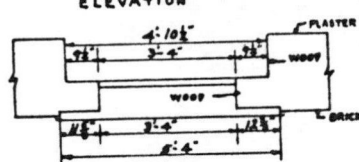
ELEVATION



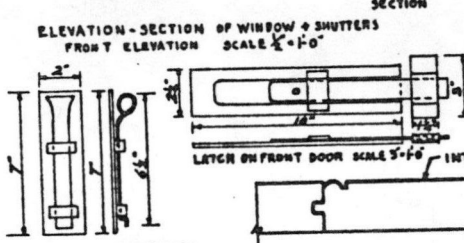
SECTION



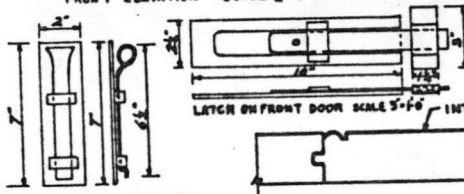
WROUGHT IRON BUTTON FOR SHUTTER SCALE 5/8"=1'-0"



PLAN - ELEVATION - SECTION OF FRONT DOOR A B SCALE 1/4"=1'-0"



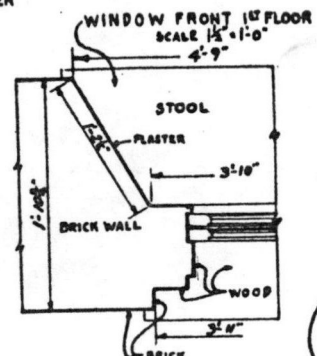
ELEVATION - SECTION OF WINDOW + SHUTTERS FROM FRONT ELEVATION SCALE 1/4"=1'-0"



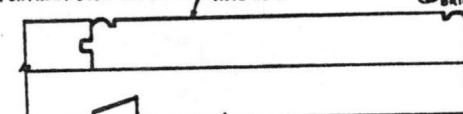
LATCH ON FRONT DOOR SCALE 5/8"=1'-0"



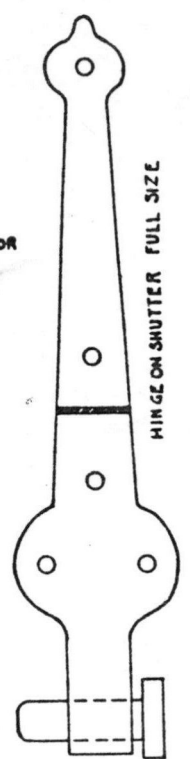
LATCH ON SHUTTERS SCALE 5/8"=1'-0"



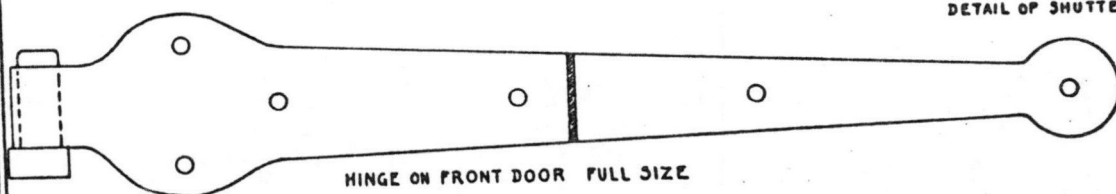
WINDOW FRONT 1ST FLOOR SCALE 1/4"=1'-0"



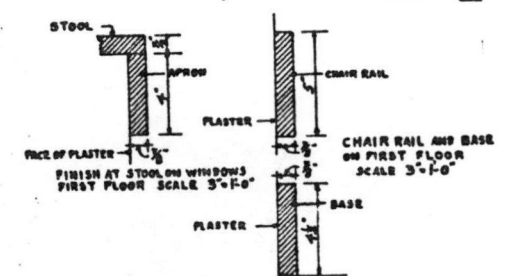
EXTERIOR DETAIL OF SHUTTER FULL SIZE



HINGE ON SHUTTER FULL SIZE

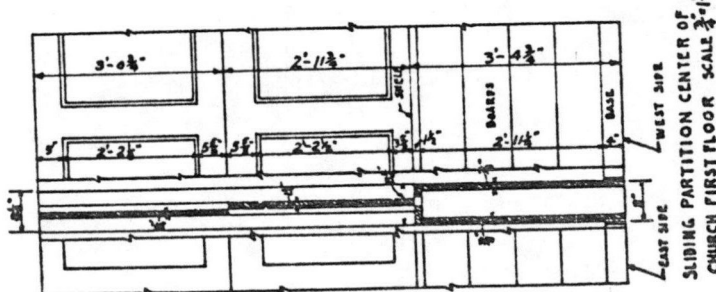


HINGE ON FRONT DOOR FULL SIZE

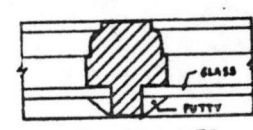


FINISH AT STOOL ON WINDOWS FIRST FLOOR SCALE 3/8"=1'-0"

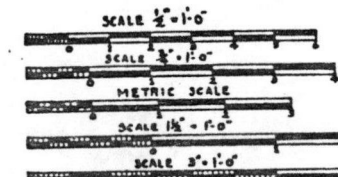
CHAIR RAIL AND BASE ON FIRST FLOOR SCALE 3/8"=1'-0"



SLIDING PARTITION CENTER OF CHURCH FIRST FLOOR SCALE 1/4"=1'-0"



MUNTIN FULL SIZE



CLIFFORD WILLSON DEL.
 HISTORIC AMERICAN BUILDINGS SURVEY O.P. 265-6907
 UNDER DIRECTION OF UNITED STATES DEPARTMENT OF THE INTERIOR
 NATIONAL PARK SERVICE, BRANCH OF PLANS AND DESIGN

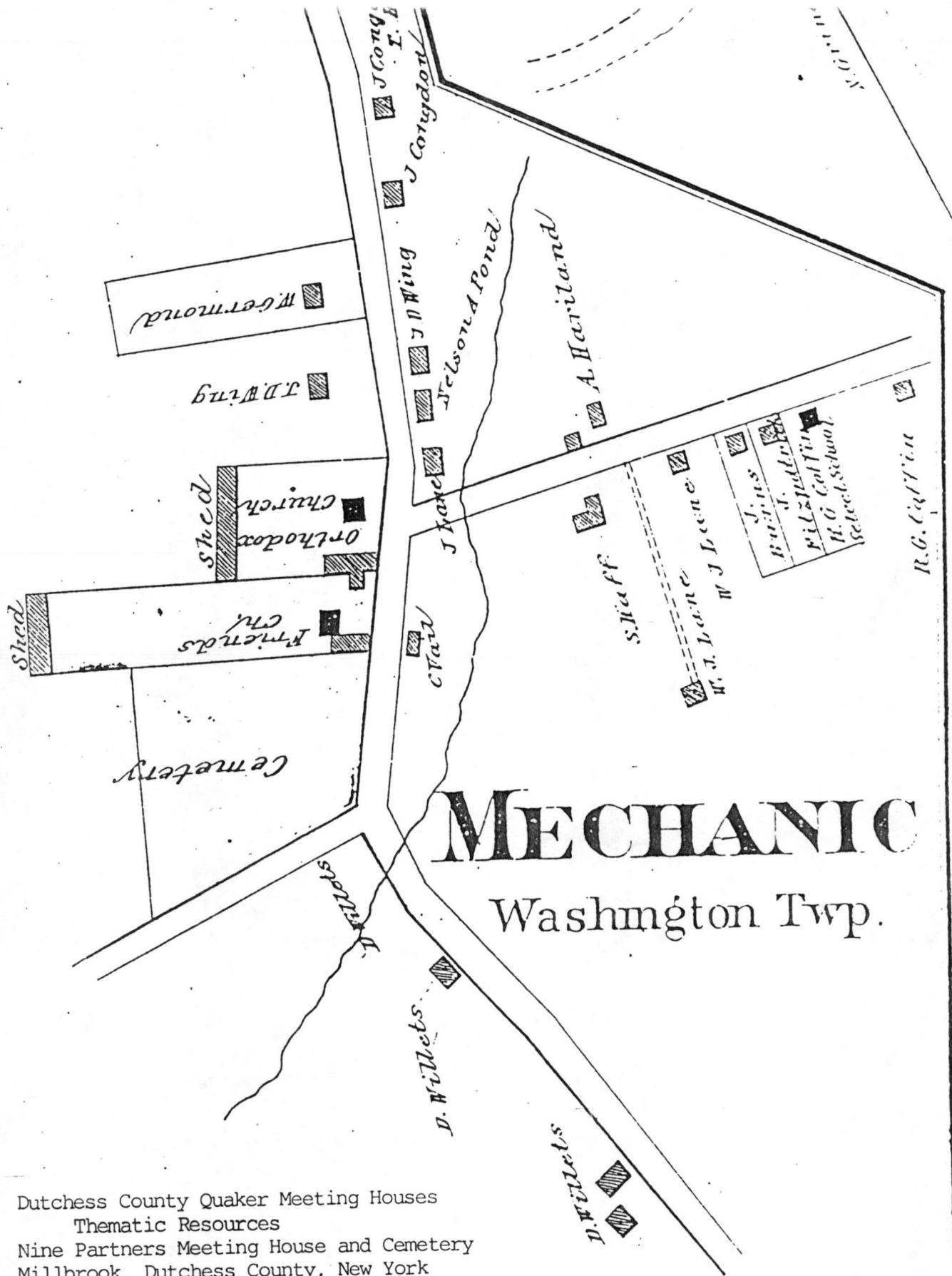
NAME OF STRUCTURE
NINE PARTNERS MEETING HOUSE
 MILLBROOK DUTCHESS COUNTY NEW YORK



SURVEY NO.
 N.Y. 489

HISTORIC AMERICAN BUILDINGS SURVEY
 SHEET 8 OF 8 SHEETS

*Quaker
 Dutchess County Meeting houses T. R.
 Nine Partners Meeting House
 Millbrook, Dutchess Co.*

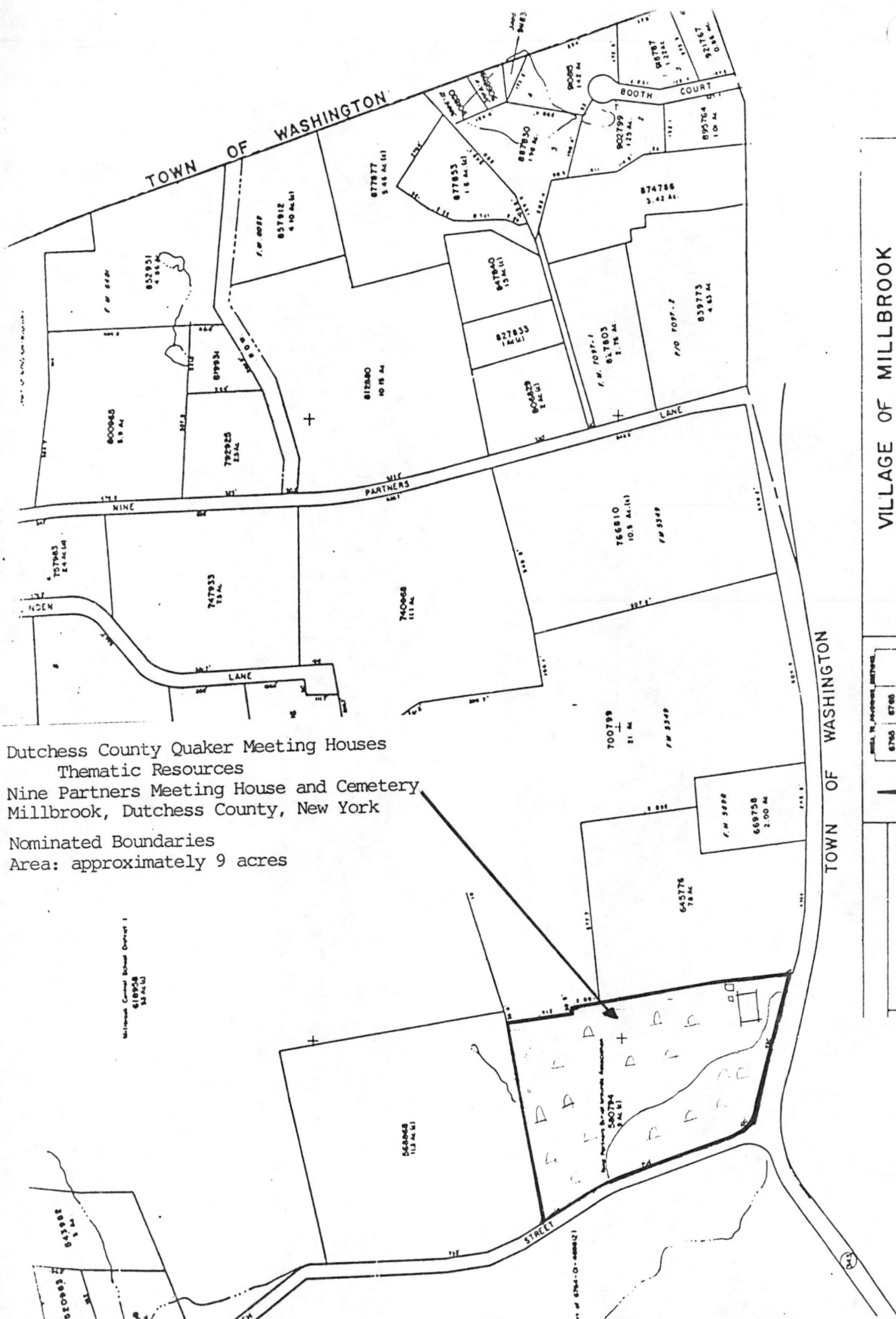


MECHANIC

Washington Twp.

Dutchess County Quaker Meeting Houses
 Thematic Resources
 Nine Partners Meeting House and Cemetery
 Millbrook, Dutchess County, New York

Historic setting, from: New Illustrated Atlas
 of Dutchess County, New York. Reading, PA:
 Reading Publishing House. 1876.

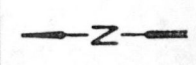


Dutchess County Quaker Meeting Houses
 Thematic Resources
 Nine Partners Meeting House and Cemetery
 Millbrook, Dutchess County, New York
 Nominated Boundaries
 Area: approximately 9 acres

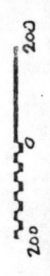
VILLAGE OF MILLBROOK
 TOWN OF WASHINGTON
 DUTCHESS COUNTY, NEW YORK

6764-02

8760	03	8764	01
8765	04	8764	02



DATE OF MAP	SEPT. 1971
DATE OF REVISION	JAN. 1979
PARCEL COUNTY	43



United States Department of the Interior
National Park Service

National Register of Historic Places
Continuation Sheet

Section number _____ Page _____

SUPPLEMENTARY LISTING RECORD

NRIS Reference Number: 89000300

Date Listed: 04/27/89

Nine Partners Meeting House
and Cemetery
Property Name

Dutchess
County

NY
State

Dutchess County Quaker Meeting Houses Thematic Resources
Multiple Name

This property is listed in the National Register of Historic Places in accordance with the attached nomination documentation subject to the following exceptions, exclusions, or amendments, notwithstanding the National Park Service certification included in the nomination documentation.

for Beth L. Savage
Signature of the Keeper

4-27-89
Date of Action

=====

Amended Items in Nomination:

Correct counts of contributing and noncontributing resources:

- 1 C building
- 2 NC buildings
- 1 C structure
- 1 C object
- 1 C site

This information was confirmed with Kathleen LaFrank, National Register Director, NYSHPO, by telephone.

DISTRIBUTION:

National Register property file
Nominating Authority (without nomination attachment)

United States Department of the Interior
National Park Service

National Register of Historic Places
Continuation Sheet

Section number _____ Page _____

Multiple Resource Area
Thematic Group

Name Dutchess County Quaker Meeting Houses TR
State Dutchess County, NEW YORK

Nomination/Type of Review	Date/Signature
Cover Substantive Review	for Keeper <u>Beth L. Sarge 4/27/89</u>
1. Beekman Meeting House and Friends' Cemetery Substantive Review	for Keeper <u>Beth L. Sarge 4/27/89</u>
2. Clinton Corners Friends Church Entered in the National Register	for Keeper <u>Delores Byers 4/27/89</u>
3. Creek Meeting House and Friends' Cemetery Entered in the National Register	for Keeper <u>Delores Byers 4/27/89</u>
4. Crum Elbow Meeting House and Cemetery Entered in the National Register	for Keeper <u>Delores Byers 4/27/89</u>
5. Nine Partners Meeting House and Cemetery Substantive Review	for Keeper <u>Beth L. Sarge 4/27/89</u>
6. Oswego Meeting House and Friends' Cemetery Entered in the National Register	for Keeper <u>Delores Byers 4/27/89</u>
7. Poughkeepsie Meeting House (Montgomery Street) Entered in the National Register	for Keeper <u>Delores Byers 4/27/89</u>
8. Poughkeepsie Meeting House (Hooker Avenue) Entered in the National Register	for Keeper <u>Delores Byers 4/27/89</u>
9. _____	Keeper _____
10. _____	Keeper _____

UNITED STATES DEPARTMENT OF THE INTERIOR
NATIONAL PARK SERVICE

NATIONAL REGISTER OF HISTORIC PLACES
EVALUATION/RETURN SHEET

REQUESTED ACTION: NOMINATION

PROPERTY NAME: Nine Partners Meeting House and Cemetery

MULTIPLE NAME: Dutchess County Quaker Meeting Houses TR

STATE & COUNTY: NEW YORK, Dutchess

DATE RECEIVED: 3/16/89 DATE OF PENDING LIST: 3/28/89
DATE OF 16TH DAY: 4/13/89 DATE OF 45TH DAY: 4/30/89
DATE OF WEEKLY LIST:

REFERENCE NUMBER: 89000300

NOMINATOR: STATE

REASONS FOR REVIEW:

APPEAL: N DATA PROBLEM: N LANDSCAPE: N LESS THAN 50 YEARS: N
OTHER: N PDIL: N PERIOD: N PROGRAM UNAPPROVED: N
REQUEST: N SAMPLE: N SLR DRAFT: Y NATIONAL: N

COMMENT WAIVER: N

ACCEPT RETURN REJECT 4/27/89 DATE

ABSTRACT/SUMMARY COMMENTS:

Outstanding, well-preserved representative of early growth and development of the Society of Friends in Dutchess County. Particularly notable for its size, brick construction, refined detailing, and association with one of the largest and most influential meetings in the region.

RECOM./CRITERIA Accept A+C
REVIEWER Jawze
DISCIPLINE Architectural History
DATE 4/27/89

DOCUMENTATION see attached comments Y/N see attached SLR Y/N

CLASSIFICATION

count resource type

STATE/FEDERAL AGENCY CERTIFICATION

FUNCTION

historic current

DESCRIPTION

architectural classification
 materials
 descriptive text

SIGNIFICANCE

Period Areas of Significance--Check and justify below

Specific dates Builder/Architect
Statement of Significance (in one paragraph)

summary paragraph
 completeness
 clarity
 applicable criteria
 justification of areas checked
 relating significance to the resource
 context
 relationship of integrity to significance
 justification of exception
 other

BIBLIOGRAPHY

GEOGRAPHICAL DATA

acreage verbal boundary description
 UTMs boundary justification

ACCOMPANYING DOCUMENTATION/PRESENTATION

sketch maps USGS maps photographs presentation

OTHER COMMENTS

Questions concerning this nomination may be directed to

_____ Phone _____

Signed _____ Date _____

Dutchess County Quaker Meeting
Houses Thematic Resources

Nine Partners Meeting House and
Cemetery

Millbrook, Dutchess County

Neil Larson, circa 1986

Neg: Dutchess County Historical
Society, Poughkeepsie, NY 12602

View: exterior, southwest
perspective (1)



Dutchess County Quaker Meeting
Houses Thematic Resources

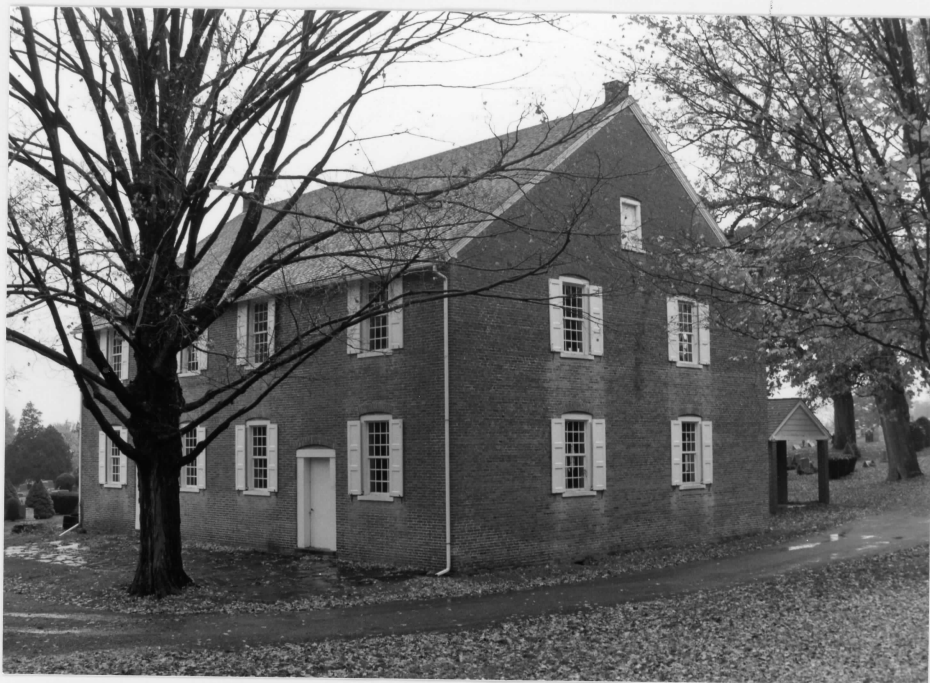
Nine Partners Meeting House and
Cemetery

Millbrook, Dutchess County

Neil Larson, circa 1986

Neg: Dutchess County Historical
Society, Poughkeepsie, NY 12602

View: (2) exterior
southeast perspective



Dutchess County Quaker Meeting
Houses Thematic Resources

Nine Partners Meeting House and
Cemetery

Millbrook, Dutchess County

Neil Larson, circa 1986

Neg: Dutchess County Historical
Society, Poughkeepsie, NY 12602

View (3) exterior, northeast
perspective from cemetery

showing non-contributing brick
garage (left) and storage
shed (center) (3)



Dutchess County Quaker Meeting
Houses Thematic Resources

Nine Partners Meeting House and
Cemetery

Millbrook, Dutchess County

Melodye K. Moore, 1986

Neg: Dutchess County Historical
Society, Poughkeepsie, NY 12602

View: (4) interior, vestibule
looking out east



Dutchess County Quaker Meeting
Houses Thematic Resources

Nine Partners Meeting House and
Cemetery

Millbrook, Dutchess County
Melodye K. Moore, 1986 (5)

Neg: Dutchess County Historical
Society, Poughkeepsie, NY 12602
View; interior, east side, look-
ing towards facing benches and
partition. (5)

Millbrook, Dutchess County



Dutchess County Quaker Meeting
Houses Thematic Resources

Nine Partners Meeting House and
Cemetery

Millbrook, Dutchess County
Melodye K. Moore, 1986

Neg: Dutchess County Historical
Society, Poughkeepsie, NY 12602
View: (6) interior, east side,
looking towards facing benches

and showing gallery. (6).



Dutchess County Quaker Meeting
Houses Thematic Resources

Nine Partners Meeting House and
Cemetery

Millbrook, Dutchess County
Melodye K. Moore, 1986

Neg: Dutchess County Historical
Society, Poughkeepsie, NY 12602

View: (7) interior, west side,
looking towards facing benches.

gallery opening closed with
decking. (7)



Dutchess County Quaker Meeting
Houses Thematic Resources

Nine Partners Meeting House and
Cemetery

Millbrook, Dutchess County
Melodye K. Moore, 1986

Neg: Dutchess County Historical
Society, Poughkeepsie, NY 12602

View: (8) cemetery, looking
southwest, north of meetinghouse



Dutchess County Quaker Meeting
Houses Thematic Resources

Nine Partners Meeting House and
Cemetery

Millbrook, Dutchess County

Neil Larson, circa 1986

Neg: Dutchess County Historical
Society, Poughkeepsie, NY 12602

View: (9) cemetery looking
southeast, meeting house

background.



Dutchess County Quaker Meeting
Houses Thematic Resources

Nine Partners Meeting House and
Cemetery

Millbrook, Dutchess County

Neil Larson, circa 1986

Neg: Dutchess County Historical
Society, Poughkeepsie, NY 12602

View: (10) cemetery, looking
northeast, north of meetinghouse

background.



Dutchess County Quaker Meeting
Houses Thematic Resources

Nine Partners Meeting House and
Cemetery

Millbrook, Dutchess County

Neil Larson, circa 1986

Neg: Dutchess County Historical
Society, Poughkeepsie, NY 12602

View: (11) cemetery,
looking southwest.



Dutchess County Quaker Meeting
Houses Thematic Resources

Nine Partners Meeting House and
Cemetery

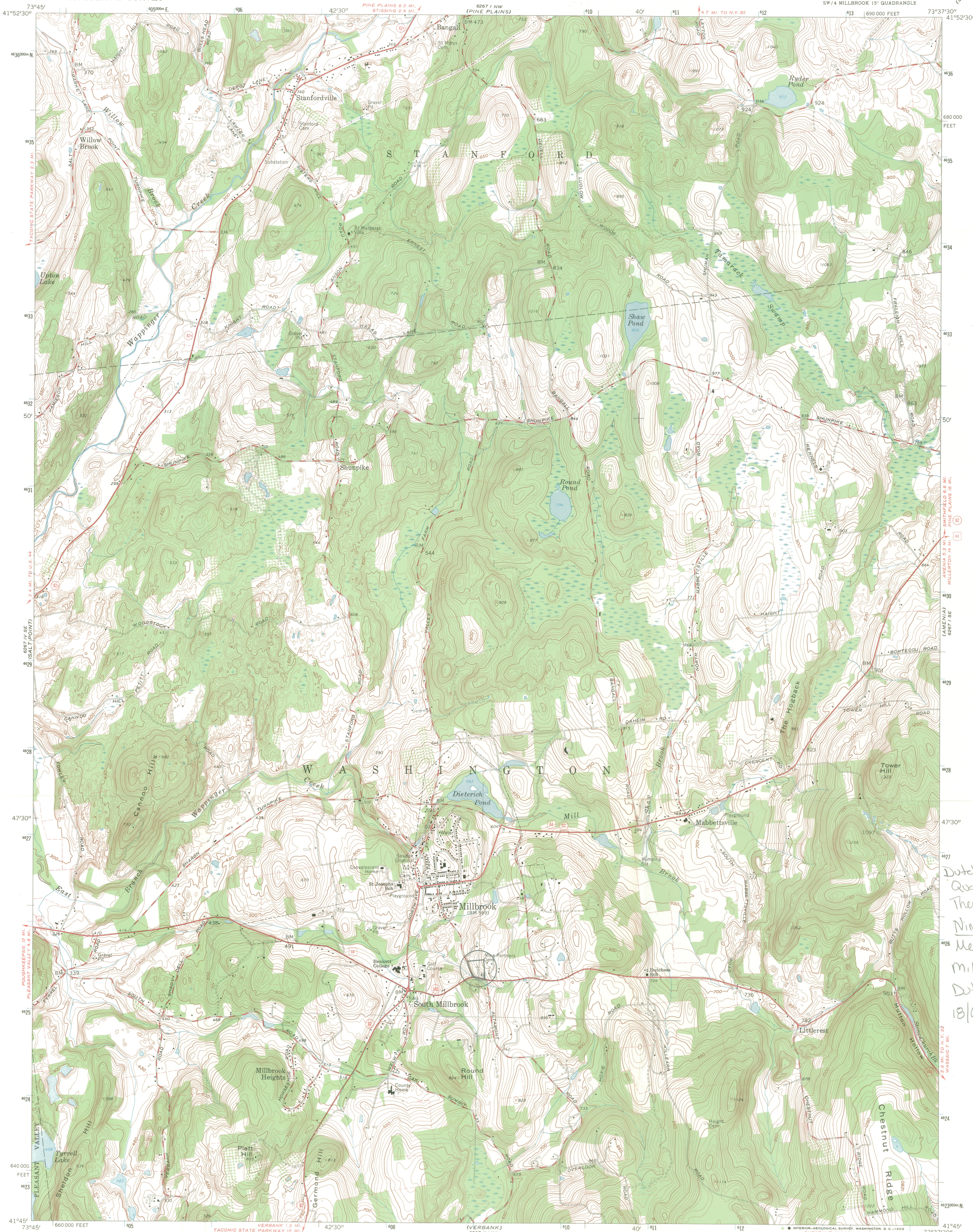
Millbrook, Dutchess County

Neil Larson, circa 1986

Neg: Dutchess County Historical
Society, Poughkeepsie, NY 12602

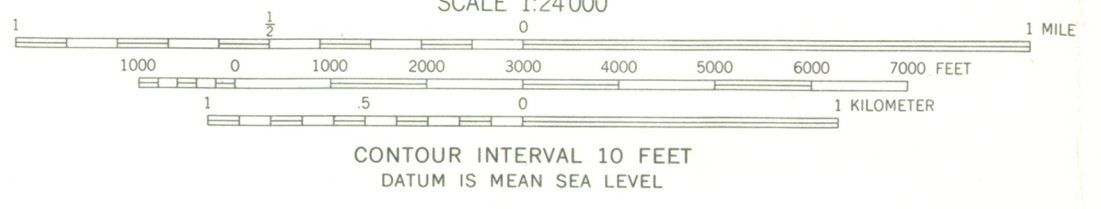
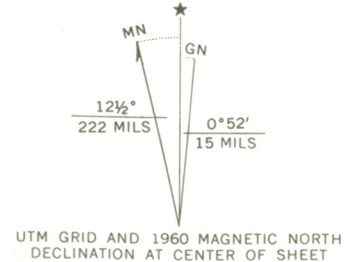
View: (12) cemetery, grave
marker dated 1799.





Dutchess County
Quaker Meeting House
Thematic Resources
Nine Partners
Meeting House
Millbrook,
Dutchess County
18/609030/4625480

Mapped, edited, and published by the Geological Survey
Control by USGS and USC&GS
Topography from aerial photographs by photogrammetric methods
and by plane-table surveys 1944. Aerial photographs taken 1942
Revised 1960
Polyconic projection. 1927 North American datum
10,000-foot grid based on New York coordinate system, east zone
1000-meter Universal Transverse Mercator grid ticks,
zone 18, shown in blue
Fine red dashed lines indicate selected fence and field lines where
generally visible on aerial photographs. This information is unchecked



ROAD CLASSIFICATION

Heavy-duty	Light-duty
Medium-duty	Unimproved dirt
U.S. Route	State Route

MILLBROOK, N. Y.
SW/4 MILLBROOK 15' QUADRANGLE
N4145-W7337.5/7.5
1960
AMS 6267 1 SW-SERIES V821

THIS MAP COMPLIES WITH NATIONAL MAP ACCURACY STANDARDS
FOR SALE BY U. S. GEOLOGICAL SURVEY, WASHINGTON, D. C. 20242
A FOLDER DESCRIBING TOPOGRAPHIC MAPS AND SYMBOLS IS AVAILABLE ON REQUEST