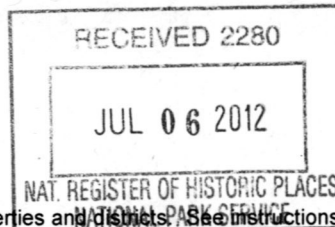


United States Department of the Interior  
National Park Service



531

### National Register of Historic Places Registration Form

This form is for use in nominating or requesting determinations for individual properties and districts. See instructions in *How to Complete the National Register of Historic Places Registration Form* (National Register Bulletin 16A). Complete each item by marking "x" in the appropriate box or by entering the information requested. If an item does not apply to the property being documented, enter "N/A" for "not applicable." For functions, architectural classification, materials, and areas of significance, enter only categories and subcategories from the instructions. Place additional entries and narrative items on continuation sheets (NPS Form 10-900a). Use a typewriter, word processor, or computer to complete all items.

#### 1. Name of Property

historic name AnSCO Company Charles Street Factory Buildings

other names/site number Agfa-AnSCO, General Aniline and Film (GAF), Anitec

#### 2. Location

street & number 15 & 17 Charles Street, 219 Clinton Street [ ] not for publication

city or town Binghamton [ ] vicinity

state New York code NY county Broome code 007 zip code 13905

#### 3. State/Federal Agency Certification

As the designated authority under the National Historic Preservation Act, as amended, I hereby certify that this [X] nomination [ ] request for determination of eligibility meets the documentation standards for registering properties in the National Register of Historic Places and meets the procedural and professional requirements as set forth in 36 CFR Part 60. In my opinion, the property [X] meets [ ] does not meet the National Register criteria. I recommend that this property be considered significant [ ] nationally [ ] statewide [X] locally. ([ ] see continuation sheet for additional comments.)

*Ruth A. Purpurt DBHPO*

*6/29/12*

Signature of certifying official/Title

Date

State or Federal agency and bureau

In my opinion, the property [ ] meets [ ] does not meet the National Register criteria. ([ ] see continuation sheet for additional comments.)

Signature of certifying official/Title

Date

State or Federal agency and bureau

#### 4. National Park Service Certification

I hereby certify that the property is:

- entered in the National Register  
[ ] see continuation sheet
- determined eligible for the National Register  
[ ] see continuation sheet
- determined not eligible for the National Register
- removed from the National Register
- other (explain) \_\_\_\_\_

*for* Signature of the Keeper  
*Alexis Obermeyer*

date of action

*8/22/12*

Ansco Company Charles Street Factory Buildings  
Name of Property

Broome County, New York  
County and State

**5. Classification**

**Ownership of Property**  
(check as many boxes as apply)

**Category of Property**  
(Check only one box)

**Number of Resources within Property**  
(Do not include previously listed resources in the count)

- private
- public-local
- public-State
- public-Federal

- building(s)
- district
- site
- structure
- object

Contributing	Noncontributing	
3	0	buildings
0	0	sites
0	0	structures
0	0	objects
<b>3</b>	<b>0</b>	<b>TOTAL</b>

**Name of related multiple property listing**  
(Enter "N/A" if property is not part of a multiple property listing)

**Number of contributing resources previously listed in the National Register**

**BROOME COUNTY INDUSTRIAL RESOURCES MPDF** \_\_\_\_\_ 0 \_\_\_\_\_

**6. Function or Use**

**Historic Functions**  
(enter categories from instructions)

**Current Functions**  
(Enter categories from instructions)

INDUSTRY/PROCESSING/MANUFACTURING

Manufacturing Facility

Industrial Storage/warehouse

\_\_\_\_\_

\_\_\_\_\_

\_\_\_\_\_

\_\_\_\_\_

COMMERCIAL/business

DOMESTIC/multiple dwelling

\_\_\_\_\_

\_\_\_\_\_

\_\_\_\_\_

\_\_\_\_\_

**7. Description**

**Architectural Classification**  
(Enter categories from instructions)

**Materials**  
(Enter categories from instructions)

NO STYLE

\_\_\_\_\_

\_\_\_\_\_

\_\_\_\_\_

foundation concrete

walls brick, concrete block

\_\_\_\_\_

roof built-up

other \_\_\_\_\_

**Narrative Description**

(Describe the historic and current condition of the property on one or more continuation sheets)

**United States Department of the Interior  
National Park Service**

**National Register of Historic Places  
Continuation Sheet**

Section 7 Page 1

**ANSCO COMPANY CHARLES  
STREET FACTORY BUILDINGS**

**Name of Property**  
**Broome County, New York**  
**County and State**

The AnSCO Company Charles Street Factory Buildings are located in the city of Binghamton's First Ward, which extends west from the Chenango River with Clinton Street as its spine.<sup>1</sup> The three nominated buildings are the only extant factory buildings related to the AnSCO Company's factory on Charles Street (and vicinity), once a large complex that was located near the Erie Railroad (E.R.R.) and Delaware, Lackawanna & Western (D.L. & W.) Railroad lines, which run east-west in the neighborhood. These lines would have served as a valuable transportation route for the company, allowing it to bring in raw materials and ship out finished products. When AnSCO first established a presence in the neighborhood around 1900, as the Monarch Paper Company, this area of Binghamton was sparsely developed. However, by the twentieth century, when the company underwent significant expansion of its Charles Street facility, the area was a mixed industrial, commercial and residential neighborhood. Numerous bars and taverns were located on nearby Clinton Street, catering to the workforce. Like other areas in Broome County, the neighborhood grew up as a "walk-to-work" area similar to the Endicott-Johnson Company in Endicott and Johnson City or the IBM company in Endicott. Today, Clinton Street is predominantly characterized by a mix of low-scale commercial and former industrial buildings, several of which have been individually listed on the register.

The nominated buildings were originally part of a complex of more than fifty industrial buildings located on both the east and west sides of Charles Street between Jarvis Street and along Clinton Street that were used for making photographic films and papers and related activities. Most of the AnSCO buildings were demolished in 2000, and today this area is surrounded by vacant land, as well as several small freestanding houses and commercial buildings. The three buildings included in the nomination are the neighboring 15 Charles Street and 17 Charles Street, both of which were constructed during the early phase of construction at this location in 1910-1911, and 219 Clinton Street, which was built as a warehouse for the AnSCO company in 1953-54. The Clinton Street building is not contiguous to the Charles Street buildings; however, it is only one-half block away and it is visible from 15 Charles Street. It is also the only other surviving building associated with the company

<sup>1</sup> The AnSCO company had many different names throughout its over 100 year history; however, it is commonly referred to as AnSCO. These names are noted on the cover page of this document, but for convenience the name AnSCO will be used in reference to the company. A more thorough company history, including all name changes, is noted in the associated Multiple Property Documentation Form *Industrial Resources of Broome County, New York*.

**United States Department of the Interior  
National Park Service**

**National Register of Historic Places  
Continuation Sheet**

Section 7 Page 2

**ANSCO COMPANY CHARLES  
STREET FACTORY BUILDINGS**

**Name of Property**  
**Broome County, New York**  
**County and State**

at this important factory location and it represents AnSCO's last important era as a profitable business in Binghamton. The building at 15 Charles Street was identified in a 1939 AnSCO publication as the Paper Plant, while a 1918 Sanborn map identified the smaller building at 17 Charles Street as the Power House and Boiler House. Each of the AnSCO buildings was identified with a number: 15 Charles Street has a large painted "10" on its east, Charles Street, elevation, and 17 Charles Street has a painted "12." Both numbers are indicated on the 1918 Sanborn maps. The Charles Street buildings are similar in design and materials. The building at 219 Clinton Street reflects mid-century design and construction practices.

**15 Charles Street**

The building at 15 Charles Street, the larger of the two neighboring factory buildings on Charles Street, is a long rectilinear industrial loft building (approximately 45 feet wide and 230 feet long). It is built of brick and features a heavy timber post and beam framing system. The building spans the width of the block, with elevations facing onto Jarvis Street to the west and Charles Street to the east. The elevated concrete foundation and water table is scored to resemble stone blocks. The general mass of the building is rectangular with numerous, regularly spaced, segmentally arched windows to provide interior lighting. A wedge-shaped form (added between 1914-1918) is located on the south elevation, towards the eastern Charles Street side, and contained storage space, an elevator (in 1918), and a reinforced concrete fire stair tower. The north elevation of the building has a small rectangular stair tower (original) with a historic, ca. 1950s, one-story unit that wraps its north and west sides.

The building is three bays deep on its east and west elevations and ten bays long on its north and south sides. All elevations feature brick pilasters, which project slightly above the roofline, that are spaced approximately thirty-four-feet on center, and the building features a corbelled frieze. Between each set of pilasters on the north and south sides are three segmental arched windows; the smaller east and west sides feature sets of two windows between each. Windows are generally one-over-one double-hung aluminum replacement units with stone sills. Some windows have been filled in. A small penthouse unit is visible on the roof, located in the southwestern corner of the building. Entry doors are located at the southern bay of the east elevation and on the westernmost bay of the north elevation. At the southwest corner of the building, curved metal conduits are

**United States Department of the Interior  
National Park Service**

**National Register of Historic Places  
Continuation Sheet**

Section 7 Page 3

**ANSCO COMPANY CHARLES  
STREET FACTORY BUILDINGS**

**Name of Property**  
**Broome County, New York**  
**County and State**

present, remnants of the previous connection between the building at 15 Charles Street and the 1946 power plant located southwest of the building. The 1946 power plant is no longer extant. As visible in the 1960s aerial image of the factory site, these conduits once carried the electrical current over Clinton Street and Jarvis Street, connecting to the façade of the building with a series of arched metal tubes. While the overhead conduits are long since removed, the remnants of this system connecting to the building are still visible on the exterior.

The interior of 15 Charles Street has been rehabilitated; however, it still retains much of its original historic character as an industrial loft building. Flexible interior spaces were typical of industrial buildings of the era, as machinery and work spaces could be altered and rearranged as needed. Entrance is via a small door on the southeast corner of the Charles Street elevation that provides access to a stair, elevators and to the basement or ground floor space. The first floor is currently used as storage but retains much of its original open-plan character and is similar in appearance to the upper floors. The open, three-bay (east-west along the length of the building) heavy-timber structural system used throughout the building is visible, with slightly wider, approximately twelve-foot-wide on center bays to the north and south of the central bay. The basement features large, approximately ten-inch by ten-inch, wood columns and they are set approximately eight foot on center from east to west, supporting the wood floors above. As an example of a factory from the later stages of mill construction, the building features metal plates connecting the wood columns and beams, providing additional stability to the frame. This heavy-duty construction, especially in the basement, is an indication of the heavy load of the photographic paper machinery that was originally installed in the building. Ceilings are the exposed wood from the floor above, and walls are painted brick.

The upper floors have been randomly divided into several different office, industrial, and residential functions and the floors have random circulation patterns. On the upper stories, the column grid, composed of the same wood columns and metal brackets, features eight inch columns set on a similar eight-foot east-west grid. The first floor contains corporate style offices and labs on the west end and the lower level of a two-story dance studio on the east end. These two developed spaces bracket the as-yet undeveloped center portion of original open factory space. Finished first floor spaces typically feature carpet tile flooring, simply finished, brightly painted dry wall partitions set between exposed columns and the painted underside of the wood flooring above.

**United States Department of the Interior  
National Park Service**

**National Register of Historic Places  
Continuation Sheet**

Section 7 Page 4

**ANSCO COMPANY CHARLES  
STREET FACTORY BUILDINGS**

**Name of Property**  
**Broome County, New York**  
**County and State**

Duct work is exposed, accenting the industrial character of the space. Lighting is typically pendants with simple metal shades. Brick interior walls are exposed but painted. Many of the historic sliding metal doors are still intact and visible in many tenant spaces. The lower level of the dance studio features a lobby and waiting rooms with similar finishes. Overall the preservation of most historic features and finishes and the lack of an "overly finished" quality to the spaces reinforces the industrial character of the space.

The second floor of the building contains a broad, curving hallway of painted and unfinished exposed brick, carpet-tiled floors and exposed columns that access student apartment suites. The suites are unusually open and spacious in configuration, taking advantage of the vast open space available. While irregularly configured, each suite contains a windowless central lounge area with kitchen and restrooms and adjacent, individual, large bed/study rooms. Finishes are similar to those used throughout the building, including carpet or wood floors, painted brick or new wall surfaces, and exposed wood ceilings with ducts and industrial style light fixtures. Some historic metal fire doors are featured in the student housing spaces, reinforcing the simple industrial feel in these spaces. Accessed separately at the northeast corner via an internal stair, the second level of the dance studio features large open studio spaces revealing the column grid, wood floors and ceilings, painted walls and visible ductwork.

The third floor is divided into similar six-bedroom and three-bedroom student suites, in a configuration similar to the second floor, accessed by a broad, open single-loaded twelve-foot (one-bay) wide hall. The finishes and appearance are similar to those on the lower floors, and this floor also retains much of the simplicity, functional design and industrial fittings inherent to this type of early industrial design.

**17 Charles Street**

Once used as a power house, 17 Charles Street is located northeast of 15 Charles Street. The powerhouse is a smaller, two-story, three-bay by three-bay building, approximately sixty-foot-square. The building is constructed of reinforced concrete with a steel skeleton and simple steel columns. However, like 15 Charles, it was clad in brick and is similar in design, featuring brick pilasters with segmental-arched window openings, here set in pairs in each bay. In the northernmost bay of the eastern elevation is a large segmental-arched

**United States Department of the Interior  
National Park Service**

**National Register of Historic Places  
Continuation Sheet**

Section 7 Page 5

**ANSCO COMPANY CHARLES  
STREET FACTORY BUILDINGS**

**Name of Property**  
**Broome County, New York**  
**County and State**

window unit on the ground level; this is a replacement but sympathetic to the design of the building. The north elevation features a projecting metal canopy above a large, contemporary, segmental-arched entry door and window unit, which is also complementary to the building's appearance. A one-story addition was added to the building's west elevation prior to 1950. Historically, 17 Charles Street and 15 Charles Street were linked via a subterranean connection in the basement.

No. 17 Charles Street is now used as a physical therapy office; however, the interior of the building retains its sense of simple, minimally designed and unfinished industrial space. Like 15 Charles, the building retains exposed brick walls. The main entry lobby for the building is located on the northeastern corner of the building, entered via a contemporary door on the north elevation. The lobby space forms an inverted U-shape around a large modern elevator and features a tile floor, new walls and a glass and metal storefront on either side of the elevator. A small full-length window is located to the east side of the elevator, while a metal and glass door, located on the west side, provides access to a medical supply office. The lobby features original exposed brick walls that subdivided the building, serving as a fire separation wall between two potentially dangerous spaces, the boiler room and the dynamo/engine room. As depicted in the 1918 sanborn map, two masonry openings near the exterior walls are present, and the three layered brick segmental arched openings match the headers of the original exterior window openings.<sup>2</sup> The small segmental arched "window" opening visually connecting the two rooms appears to be a more recent, albeit sympathetic, modification, as its redundant header appears cut into the existing brick pattern and the arched head only contains two rows of bricks. Extant metal bracket pieces above the window likely supported a large metal fire door that could be used to close off the door opening. The steel skeleton of the building is visible in most of the spaces, and ducts are generally left exposed, reinforcing the sense of simply finished industrial space.

The second floor of the building is similarly designed and features the same mix of some modern materials with many historic elements. This floor features a small waiting area, accessed via the elevator or stair from the primary building lobby. Also divided into private medical office spaces, this floor features carpet, exposed

<sup>2</sup> There is no exterior evidence, such as a variation in brick color or pattern, at the visible east elevation that supports that this building had a large addition.

**United States Department of the Interior  
National Park Service**

**National Register of Historic Places  
Continuation Sheet**

Section 7 Page 6

**ANSCO COMPANY CHARLES  
STREET FACTORY BUILDINGS**

**Name of Property**  
**Broome County, New York**  
**County and State**

brick walls at the exterior and the central brick fire wall and a minimum number of new walls simply finished and painted. A half-height divider is located along the north side of the building, sectioning off desks and workspace. The steel skeleton of the building remains exposed throughout, reinforcing the cage-like grid of the columns and the industrial character of the building. While the building has been partitioned and some new materials have been used to create offices, its structural system is exposed in many areas and its minimal industrial character is quite apparent.

**219 Clinton Street**

The building at 219 Clinton Street was designed and constructed nearly a half-century later and reflects period design and construction for wide-span space for industrial warehouses. The large rectangular building, approximately 150-feet long on Clinton Street by 225-feet deep along Rogers Street, is a raised one-story building with a poured concrete foundation, walls of concrete block with some brick cladding on the primary elevations, and a membrane roof. Fenestration on the building is minimal, and only a few irregular window openings, now filled with glass block, are located on the north elevation. One of the most prominent elements of the building is a long truck dock on the east elevation. Shielded with a large open canopy with a corrugated metal roof, this elevation features numerous bays with freight doors on an elevated platform used for shipping.

The AnSCO Company Charles Street Factory Buildings are the sole remaining extant buildings at what was once a large campus of industrial buildings in this area with a direct connection to the AnSCO camera and film company. They retain a high level of integrity.

AnSCO Company Charles Street Factory Buildings  
Name of Property

Broome County, New York  
County and State

**8. Statement of Significance**

**Applicable National Register Criteria**

(Mark "x" in one or more boxes for the criteria qualifying the property for National Register listing.)

- A** Property associated with events that have made a significant contribution to the broad patterns of our history.
- B** Property is associated with the lives of persons significant in our past.
- C** Property embodies the distinctive characteristics of a type, period, or method of construction or that represents the work of a master, or possesses high artistic values, or represents a significant and distinguishable entity whose components lack individual distinction.
- D** Property has yielded, or is likely to yield, information important in prehistory or history.

**Criteria Considerations**

(Mark "x" in all boxes that apply.)

- A** owned by a religious institution or used for religious purposes.
- B** removed from its original location
- C** a birthplace or grave
- D** a cemetery
- E** a reconstructed building, object, or structure
- F** a commemorative property
- G** less than 50 years of age or achieved significance within the past 50 years

**Areas of Significance:**

(Enter categories from instructions)

INDUSTRY

ARCHITECTURE

**Period of Significance:**

1910 - 1954

**Significant Dates:**

1910-1911 original construction

ca. 1914-1918 wedge addition to 15 Charles

1953-54 warehouse construction

**Significant Person:**

N/A

**Cultural Affiliation:**

N/A

**Architect/Builder:**

Frank W. O'Connell, Inc. contractors (219 Clinton)

**Narrative Statement of Significance**

(Explain the significance of the property on one or more continuation sheets.)

**9. Major Bibliographical References**

**Bibliography**

(Cite the books, articles, and other sources used in preparing this form on one or more continuation sheets.)

**Previous documentation on file (NPS):**

- preliminary determination of individual listing (36 CFR 67) has been requested.
- previously listed in the National Register
- previously determined eligible by the National Register
- designated a National Historic Landmark
- recorded by historic American Building Survey # \_\_\_\_\_
- recorded by Historic American Engineering Record # \_\_\_\_\_

**Primary location of additional data:**

- State Historic Preservation Office
- Other State agency
- Federal Agency
- Local Government
- University
- Other repository: \_\_\_\_\_

**United States Department of the Interior  
National Park Service**

**National Register of Historic Places  
Continuation Sheet**

Section 8 Page 1

**ANSCO COMPANY CHARLES  
STREET FACTORY BUILDINGS**

**Name of Property**  
**Broome County, New York**  
**County and State**

The AnSCO Company Charles Street Factory Buildings are significant as the only remaining industrial buildings associated with the AnSCO Company's Charles Street Factory Complex and as intact examples of industrial buildings representative of their periods and methods of construction.<sup>3</sup> AnSCO, a nationally significant camera and film company, was one of Binghamton's largest and most important industries. In its later years, AnSCO was "the only domestic manufacturer to compete with Kodak in offering a full line of photographic materials and equipment."<sup>4</sup> The buildings at 15 and 17 Charles Street, built in the early twentieth century as AnSCO was emerging as a nationally significant company, are the earliest existing buildings with ties to AnSCO. The larger building (15 Charles) was constructed in 1910 and used in the production of specialized photographic papers. The adjacent building (1911) was the company's original powerhouse. While 15 Charles is an example of typical late nineteenth century industrial architecture, brick with heavy timber post and beam framing, the powerhouse reflects emerging modern construction methods, built of reinforced concrete, here used to enhance fire protection. In style, however, its brick-clad exterior was similar to the adjacent factory. By the mid-twentieth century, after significant new construction, especially in the 1930s, these buildings were part of a sprawling campus of factory buildings at this location that spilled over onto adjacent streets and encompassed several acres. The building at 219 Clinton Street was built in 1953-54 as a new modern warehouse for the now nationally significant camera manufacturer. Constructed of concrete block and steel with brick cladding on primary elevation, the building's form reflects the company's growing reliance on trucks and tractor trailers for shipping their products, as the nation's highway system supplanted the rail system for transportation in the mid-1900s. After the demise of the AnSCO company at the end of the twentieth century, the massive Charles Street complex was largely demolished in 2000. The nominated buildings, the only buildings in the complex to survive the demolition, are important reminders of this once prominent company's role in the history of

<sup>3</sup> This expansive industrial campus centered around Charles Street, but grew to include areas on neighboring Jarvis, Clinton, and Elm Streets. For ease in referring to these buildings, and as Charles Street was the historical center of the factory complex, this factory site is referred to as the Charles Street Factory.

<sup>4</sup> Bergmann Associates, *The First Ward Redevelopment Plan for the City of Binghamton, New York*, report (Rochester, Nov 2010), 5, accessed December 12, 2011, <http://www.cityofbinghamton.com/userfiles/file/First%20Ward%20Redevelopment%20Plan/Drafts%20of%20pre-nomination%20study/Final%20Document%20-%20Sec%201.pdf>.

**United States Department of the Interior  
National Park Service**

**National Register of Historic Places  
Continuation Sheet**

Section 8 Page 2

**ANSCO COMPANY CHARLES  
STREET FACTORY BUILDINGS**

**Name of Property  
Broome County, New York  
County and State**

Binghamton and the west side neighborhood. They represent an industry that played a strong role in shaping the character of Binghamton as a center for innovation and technical prowess.<sup>5</sup>

**A History of Industry in Broome County<sup>6</sup>**

Industry has played a key role in shaping and defining the culture of Broome County since the earliest settlement began in the region in the late eighteenth century. With its prominent role as a transportation center for the region, first from its prime location on the Susquehanna and Chenango Rivers and later as a railroad hub, the city of Binghamton became the home of many of Broome County's prominent industries. As the nation moved into the twentieth century, Broome County became home to several nationally and internationally prominent companies that left an indelible mark on our lives today. After World War II, industry began a slow decline in the region, following national trends, and many of the area's stalwart companies were forced to close their doors or relocate elsewhere, meaning thousands of lost jobs. Today, Binghamton and Broome County are using this proud legacy of industrial history for new growth and development and as a basis for historic preservation projects and heritage tourism.

During its early history, from the late eighteenth until the mid-nineteenth centuries, logging and timber were the region's dominant industries, making use of the region's vast forested land. Rafts of logs, lashed together, were floated down rivers and streams from the interior areas of the county to the markets in Binghamton and beyond. When this sector dried up by the 1850s, other significant industries emerged in the county. Binghamton was the center of a thriving woodworking and furniture making industry in the mid-1800s. The city's dominant industry during the late nineteenth and early twentieth century was the cigar manufacturing industry. During this era, Binghamton was second in the nation only to New York City in cigar production.

<sup>5</sup> A commercial building located at 171-177 Clinton Street in Binghamton (NR 2002) also has ties to AnSCO and was used as an office building by the company. It was not constructed by the company as an industrial building. Also, the company in its later stages constructed an Art Moderne-style building at 18 Park Street/25 Ozalid in Johnson City in 1947. More information on this building can be found in the Johnson City Historic District nomination, listed 2011.

<sup>6</sup> For more information on the history and development of industry in Broome County, see the associated Multiple Property Documentation Form *Industrial Resources of Broome County, New York*.

**United States Department of the Interior  
National Park Service**

**National Register of Historic Places  
Continuation Sheet**

Section 8 Page 3

**ANSCO COMPANY CHARLES  
STREET FACTORY BUILDINGS**

**Name of Property**  
**Broome County, New York**  
**County and State**

By the dawn of the twentieth century, shoe manufacturing became one of Broome County's most prominent industries. The Endicott-Johnson Company, located in Johnson City and Endicott, just west of Binghamton, grew into a massive company that included numerous tanneries and shoe-making factories. The company gave shape to the Johnson City and Endicott communities, establishing them as planned factory towns and shaping their growth and development. EJ, under leader George F. Johnson, became well known for its paternalistic welfare capitalism program, known as the "Square Deal," which was an agreement between workers and management intended to maintain the peace and stall unionization. The company had a tremendous influence over the daily lives of its employees, offering things like insurance, medical care and even houses to workers, and a wide variety of entertainment and recreation was available as well. Company plays, bands and sports teams were among the many activities and groups associated with Endicott-Johnson.

Broome County also had thriving technology and aerospace industries in the nineteenth century, becoming a center for invention and new technologies in the twentieth century. Now a household name for computers and software, the International Business Machine (IBM) company has roots in Endicott, at its Plant No. 1, which it established in 1905. Here, IBM established not only a sprawling complex of reinforced concrete factory buildings at North Street and McKinley Avenue (extant, National Register Eligible), built largely between the 1900s until the 1940s, but a research laboratory and school building to train and educate the workers and salespeople. In Endicott, IBM made significant developments in technology, data processing and computer technologies. Broome County was also home to the Link Aviation Company, which pioneered flight simulation to train pilots safely and effectively. The Link Trainer was an important invention as it pioneered what we now call "virtual reality," creating a machine that simulated the process of another machine. Link Trainers were widely used to train pilots during World War II, and flight simulation is still used to train commercial, military and private pilots today.

After World War II, many of Broome County's largest and most prominent companies slowly began to decline. This was part of a national trend in post-war America, as companies struggled to compete with emerging foreign markets. Many companies were forced to reduce their workforce, close their doors all together, or relocate manufacturing overseas in order to stay in business. Locally in Broome County, the three largest companies,

**United States Department of the Interior  
National Park Service**

**National Register of Historic Places  
Continuation Sheet**

Section 8 Page 4

**ANSCO COMPANY CHARLES  
STREET FACTORY BUILDINGS**

**Name of Property**  
**Broome County, New York**  
**County and State**

including IBM, Endicott-Johnson and Ansco, all suffered in the second half of the twentieth century. As IBM became an international company, the factory in Endicott became outdated and outgrown, and by 2004 the company had sold all of its Endicott properties, maintaining a minimal presence in the community. Endicott-Johnson failed to keep pace with growing footwear trends after World War II and also faced stiff foreign competition. After the death of company visionary George F. Johnson in 1948, EJ underwent a series of leadership changes, which resulted in cuts and changes to the company. After selling off various departments in the 1990s, Endicott-Johnson closed its doors in 2004.

**A History of the Ansco Company<sup>7</sup>**

The Ansco Company was once one of the nation's leading manufacturers of cameras and photographic films and papers during the twentieth century.<sup>8</sup> The company's roots date back to an era of great experimentation in the nascent field of photography, which emerged in the early 1800s. During the mid to late nineteenth century, photography developed from just a novelty or a toy to become a more serious art form. As artists began to push the boundaries of what camera equipment and photographic films could do, Ansco developed new and more sophisticated photo products as well.

During much of the twentieth century, Ansco operated two primary factory locations in Broome County. The Charles Street factory produced the photographic films and papers and also contained administrative and research facilities. A large warehouse, located at 219 Clinton Street near the Charles Street facility, built 1953-54, was also used by Ansco in its later phases. A separate factory on Corliss Avenue in Johnson City, which later relocated to 16 Emma Street (also nominated) in Binghamton, manufactured cameras. Other sites included a factory in Afton, Chenango County, NY (built 1916, demolished 1935), and a former New York State Electric and Gas (NYSEG) building (determined eligible for listing), now expanded into the Engineering Innovation

<sup>7</sup> For additional information on the history of the Ansco company, see *Industrial Resources of Broome County, New York Multiple Property Documentation Form*, E-35 – E-38, E-41 – E-42.

<sup>8</sup> The Ansco company had many different names throughout its over 100 year history, although the company is commonly referred to as Ansco. To avoid confusion in this nomination, these names are noted on the cover page of this document. A more thorough company history, including all name changes, is noted in the associated Multiple Property Documentation Form *Industrial Resources of Broome County, New York*.

United States Department of the Interior  
National Park Service

National Register of Historic Places  
Continuation Sheet

Section 8 Page 5

**ANSCO COMPANY CHARLES  
STREET FACTORY BUILDINGS**

**Name of Property**  
**Broome County, New York**  
**County and State**

Center and used by Binghamton University, in Vestal.<sup>9</sup> This building was constructed in 1958, designed and built by the Austin Company, to serve as the new administration building. In the later phases of its history, the Ansco company built the Art Moderne building at 18 Park Street/25 Ozalid in Johnson City in 1947.<sup>10</sup> Other buildings may have had minimal ties to Ansco; however, its primary factory sites were the Charles Street factory for films and papers and the Corliss Avenue, later Emma Street, factory for cameras.

The Ansco company began in Binghamton in 1898 as the Westcott Photo Specialty Company, located at 170 Washington Street, founded by Melvin DeVer Westcott to manufacture a special type of paper used for photography, marketed as the "Monarch Brand." Following Westcott's death in 1899, the E. & H. T. Anthony & Co. of New York City acquired the company in 1900.<sup>11</sup> After acquiring the Westcott company, the Anthony company moved all its photographic papermaking to Binghamton, renaming the company the Monarch Paper Company. In 1900, the Monarch Paper Company relocated from the Washington Street location to facilities located at 29-31 Charles Street. In 1901 the company became the Anthony & Scovill Company after a merger with the Scovill & Adams Company. In 1907 the firm was again renamed, as Ansco, merging the two former names into a new moniker.<sup>12</sup>

The early decades of the twentieth century appear to have been very successful and profitable for Ansco in Broome County. In 1910 the company enlarged its Charles Street factory complex, and in May of that year, Ansco purchased the former Marshall Furniture Company plant, located on Corliss Avenue in Lestershire (now Johnson City). Production of cameras commenced at this site in October of 1910. During the early decades of the 1900s, the Ansco company grew and expanded, enlarging its primary Charles Street factory. Finally, in

<sup>9</sup> The Afton plant was built to manufacture film-grade nitrocellulose, a primary ingredient in flexible film base. However, shortages of nitrocellulose during World War I severely affected Ansco. The newly built Afton plant was never used because by the time it was completed, film-grade nitrocellulose became available to the civilian market at a very low cost as the war was winding down, rendering the plant unnecessary. Michael R. Peres, *Focal Encyclopedia of Photography: Digital Imaging, Theory and Applications, History, and Science* (Oxford: Focal Press, 2007), 42-43.

<sup>10</sup> More information on this building can be found in the Johnson City Historic District nomination, listed 2011.

<sup>11</sup> "Melvin DeVer Westcott," Westcott Family Genealogical Forum, January 8, 2010, <http://genforum.genealogy.com/westcott/messages/973.html>.

<sup>12</sup> William L. Camp, "ANSCO Chronology," Bill's Photo History, March 12, 2004. <http://billsphotohistory.com/3.html>.

**United States Department of the Interior  
National Park Service**

**National Register of Historic Places  
Continuation Sheet**

Section 8 Page 6

**ANSCO COMPANY CHARLES  
STREET FACTORY BUILDINGS**

**Name of Property**  
**Broome County, New York**  
**County and State**

1916 the company's primary stockholders held a vote, approving the transfer of AnSCO's headquarters from New York City to Binghamton.<sup>13</sup>

Despite introducing several popular cameras in the 1910s, by the 1920s, sales and profits were lagging for AnSCO. As an attempt to stimulate new growth and profits, in 1928 Agfa, a unit of the large German chemical conglomerate I.G. Farben, acquired AnSCO, becoming known afterwards as Agfa-AnSCO. In May of 1928, Agfa-AnSCO, revitalized with the injection of European money into the company, began making significant upgrades to its facilities in Broome County, constructing massive new buildings at the existing Charles Street factory site.

With this new influx of capital and energy, the 1930s were more successful for the Agfa-AnSCO company. Despite the devastation of a 1935 flood to the film factories on Charles Street, the company continued to grow both its product lines and its Broome County facilities. In the mid-1930s the AnSCO company was investing in its factories in Binghamton and undertook new modernization and upgrade projects for its paper and camera divisions. At the Charles Street paper plant, new state-of-the-art reinforced concrete buildings were constructed. Meanwhile, the company acquired the former General Cigar Company Building at 16 Emma Street in 1937 and moved production of cameras from the older Corliss Avenue buildings in Johnson City to the more modern facility on Emma Street.<sup>14</sup>

The German control that had helped a struggling AnSCO emerge more successful in the 1930s soon proved problematic. In late 1939, Agfa-AnSCO's holding company became known as General Aniline & Film Company (GAF), at which time Agfa-AnSCO became a subsidiary of GAF. After the United States entered World War II in 1941, Agfa-AnSCO was considered "enemy property" and the company was seized by the federal government. Federal agents were stationed at the company to supervise operations. As at other companies during the war, production was shifted to more military-related products. Camera production was halted, and Agfa-AnSCO manufactured optical devices such as sextants and range finders. In 1942, the company introduced the first color film that could be user-processed to the American market. However, all of the material went towards

<sup>13</sup> Refer to the 1918 Sanborn map for Binghamton, Sheet 37.

<sup>14</sup> Camp, "ANSCO Chronology."

**United States Department of the Interior  
National Park Service**

**National Register of Historic Places  
Continuation Sheet**

Section 8 Page 7

**ANSCO COMPANY CHARLES  
STREET FACTORY BUILDINGS**

**Name of Property**  
**Broome County, New York**  
**County and State**

governmental uses and was not available to the general consumer. Later that same year, the company was put under control of the Alien Property Custodian (APC). In 1944 the name "Agfa" was dropped from the company moniker, and the company adopted a new red-white-and-blue color scheme as an attempt to Americanize the business.<sup>15</sup>

Under government control during World War II, the company stagnated. Ansco returned to manufacturing amateur cameras and films in 1945, updating the versions of cameras that it offered before the war while introducing several new models. However, the company was beset with internal discord. Under government control, leadership appointments were awarded based on political connections and influence rather than on merit, and the company went through a string of directors. A growing sign of the times, Ansco cameras increasingly were made overseas, in places like Germany, Japan and Hong Kong, and were of average quality. It was not until 1965 that the company was relinquished from governmental control, being taken over by General Aniline & Film Company (GAF) in 1967.<sup>16</sup>

Several factors beginning in the 1970s made it increasingly difficult for GAF to compete in the market. In this decade, GAF sold its photographic division, splitting it into two divisions. By the 1980s it became increasingly difficult for GAF to compete with the Kodak company's hold on the film industry, and in 1981 the Binghamton GAF plant was purchased by Andlinger & Company. The company was split into two separate units, the Ozalid company and the Anitec Image Corporation, which maintained the production of photographic film and paper. As Anitec the company continued operations for over a decade, although in 1998 the company was purchased by International Paper, a division of the Eastman Kodak Company. Only forty days following the purchase of the Anitec company, International Paper announced the closure of the Binghamton factory.<sup>17</sup> The former Ansco

<sup>15</sup> Camp, "ANSCO Chronology." Also, Charles Browne, *Ansco: Cameras, Construction & Community* (Binghamton, NY: Roberson Museum, 2002), 11-12.

<sup>16</sup> Camp, "ANSCO Chronology." Also, Browne, 12.

<sup>17</sup> Browne, 14.

**United States Department of the Interior  
National Park Service**

**National Register of Historic Places  
Continuation Sheet**

Section 8 Page 8

**ANSCO COMPANY CHARLES  
STREET FACTORY BUILDINGS**

**Name of Property**  
**Broome County, New York**  
**County and State**

camera facility on Corliss Avenue (originally Marshall Furniture Company, 1890s), in Johnson City was demolished in 2009.<sup>18</sup>

For over a century, the AnSCO company had a significant presence in Binghamton's First Ward neighborhood. Much of the surrounding neighborhood developed around the AnSCO factory. While not a planned worker's community in the style of those in nearby Lestershire (Johnson City) or Endicott, the community developed as a factory neighborhood populated by the many employed at the AnSCO factory. Houses sprung up in this neighborhood, especially during the 1920s through the mid-twentieth century, creating a "walk to work" community. Clinton Street in this area became known as "bar mile" due to the growth of numerous bars, taverns and other establishments, all catering to the AnSCO factory workers.<sup>19</sup> As the AnSCO factory on Charles Street grew in size and prominence in the early half of the twentieth century, so, too, did the surrounding community, and the factory became enmeshed in the daily life and character of Binghamton's First Ward.

**15 and 17 Charles Street**

Built in the early twentieth century, the buildings at 15 and 17 Charles Street were constructed during the earliest growth phase of the AnSCO company. AnSCO established a presence on Charles Street in 1900, when the Monarch Paper Company (which became a part of the Anthony & Scoville Company, later AnSCO, the following year) was located at 27-31 Charles Street. Located in a relatively diminutive wood framed structure, from these humble roots the AnSCO factory's Charles Street factory grew.

Following a devastating fire that destroyed many of the company's wood framed buildings in 1907, the AnSCO company saw the immediate need to create fire resistant factory buildings. The design and construction of 15 Charles Street in 1910 was a direct result of the movement to create more modern factory buildings. The building was built with a solid masonry exterior to provide some measure of fire resistance; however, its heavy wood framing and wood floors and ceilings still rendered the interior susceptible to fire. Utilizing a

<sup>18</sup> "Broome County, NY," Former Industrial Site in Endicott- Johnson Corridor to Be Demolished, November 23, 2009, <http://www.gobroomecounty.com/countyexec/former-industrial-site-endicott-johnson-corridor-be-demolished>.

<sup>19</sup> Bergmann Associates, 5.

United States Department of the Interior  
National Park Service

National Register of Historic Places  
Continuation Sheet

Section 8 Page 9

**ANSCO COMPANY CHARLES  
STREET FACTORY BUILDINGS**

**Name of Property**  
**Broome County, New York**  
**County and State**

construction method that had been widely used for factories throughout the 1700 and 1800s, the building at 15 Charles Street was built in the final stages of this type of industrial building. In 1910, the use of steel reinforced concrete as an improved fire resistant factory construction system was just becoming widely known and appreciated, based on the success of the Packard Automobile Plant in Detroit, Michigan, designed by notable industrial architect Albert Kahn between 1903 and 1910.

No. 15 Charles Street was designed to serve various processes in the manufacturing of photographic papers. Shortly after its erection, the building housed a baryta (a type of high-quality paper used for black and white photography) department in its basement, paper coating in its ground level, cutting and packing on the second floor, and paper box factory and storage on the third floor. An advertisement for the company's widely popular Cyko brand paper (manufactured at 15 Charles Street) from 1913 boasted that the paper plant was the second largest in the world and the most modern and best equipped.<sup>20</sup> In a smaller area to the east end of the building, a laboratory was located in the basement and first floor, while storage was accommodated on the second and third floors.<sup>21</sup> A three-story, two-bay wedge-shaped addition was constructed at the building's southeast corner somewhere between 1914 and 1918 and was used to house storage and an elevator.<sup>22</sup> The building continued to function throughout most of its history as Ansco's primary photographic paper factory, being noted as the "Paper Plant" in a company-issued publication in 1939.<sup>23</sup>

The interior of 15 Charles Street appears to have been rather unusual among general industrial buildings in several aspects. Like the film manufacturing that occurred in neighboring buildings, the paper manufacturing process was light-sensitive. Whereas many other types of industrial buildings sought to maximize interior

<sup>20</sup> "AnSCO Advertisement," *Photo-era Magazine* 31 (1913): 329.

<sup>21</sup> Based on descriptions in the Sanborn map from 1918.

<sup>22</sup> While highly sympathetic to the design of the original building, the addition is notable when comparing the slight variation in cornice height and detail. As this portion of the building is not visible in a 1914 image of the factory, it is present on the 1918 Sanborn map for the area, dating it to between these few years. Ansco Company. *Cyko: The Positive of Photography*. Binghamton, N.Y., 1914.

<sup>23</sup> *The Story of Agfa Ansco: 1842-1939* (Binghamton, NY: Agfa Ansco, 1939), 21. While this document highlights the company's prominence in the photographic paper industry, due to the function of the existing nominated buildings, Ansco was also a significant manufacturer of photographic films. Ansco film had a prominent role in the motion picture industry and aerial and space photography. For additional information on the company's significance in this area, see *Industrial Resources of Broome County, New York Multiple Property Documentation Form*, E-37, E-41 and other pages.

United States Department of the Interior  
National Park Service

National Register of Historic Places  
Continuation Sheet

Section 8 Page 10

**ANSCO COMPANY CHARLES  
STREET FACTORY BUILDINGS**  
Name of Property  
Broome County, New York  
County and State

illumination, at 17 Charles Street the desire was the opposite. Paper manufacturing and coating took place in the basement in dark rooms, dimly lit by orange safe lights.<sup>24</sup> Also installed in the building were light traps "resembling a winding maze" that helped to prevent light from penetrating into sensitive areas of the production spaces.<sup>25</sup> While the building was designed with numerous windows, probably to allow for good ventilation of the chemical fumes within the building, as paper manufacturing expanded to other floors and ventilation technology developed the company appears to have infilled many of the windows of the building, as evident in a ca. 1963 photo of the building (see page 11-7).<sup>26</sup> Another notable interior feature of the building was the carefully controlled environment necessitated by the manufacturing process. Described in a 1942 AnSCO publication:

*At the Agfa AnSCO plant the air is washed and filtered before it is allowed to enter, and air pressure is maintained at a higher point within the building than outside, to prevent the infiltration of the outside air. Whether it is hot and humid July afternoon, or a sub-zero night in February, the temperature and humidity of every room must be maintained within the definite limits required for the different manufacturing operations.*<sup>27</sup>

Designed and built in 1911, only a year after its neighbor, 17 Charles Street demonstrates the next phase of fire resistant industrial buildings, the steel reinforced concrete building. In 1915, J.G. White Engineering Corp. of New York City undertook improvements to the power plant.<sup>28</sup> While 15 Charles Street required fire resistance, since volatile and potentially flammable chemicals and paper were stored inside, 17 Charles Street, designed to house the boilers and dynamos, was also created with fire safety in mind. No. 17 Charles Street was the factory complex's power house. In an age before smaller electrical engines could be used to power each individual machine, factories relied on large central power sources to drive machinery. Here, boilers would have been used to create steam, which in turn was used by the dynamos, a widely used type of generator, to create direct current

<sup>24</sup> Ibid.

<sup>25</sup> *Agfa AnSCO, 1842-1942: 100 Years of American Photography* (General Aniline & Film, 1942), 19.

<sup>26</sup> Browne, 3.

<sup>27</sup> *Agfa AnSCO, 1842-1942: 100 Years of American Photography*, 19.

<sup>28</sup> The extent of the improvements that J.G. White Engineering undertook at the AnSCO power plant are unclear, and no building permits have been uncovered. Comparing an earlier 1914 image of the building and a 1918 Sanborn map of the building does not appear to indicate the building was substantially enlarged or altered. The 1918 Sanborn map also identified the building as being built in 1911. The company may have expanded and enlarged the equipment and machinery within the building. "Construction," *Electrical World* 66, no. 23 (1915): 1286,

<http://books.google.com/books?id=Jm0fAQAAMAAJ&dq=AnSCO%20power%20house&pg=PA1286#v=onepage&q&f=false>.

**United States Department of the Interior  
National Park Service**

**National Register of Historic Places  
Continuation Sheet**

Section 8 Page 11

**ANSCO COMPANY CHARLES  
STREET FACTORY BUILDINGS**

**Name of Property**  
**Broome County, New York**  
**County and State**

electricity for factories. As a result of these large machines, a great deal of heat was generated that could put the building at risk for fire. There was also potential for sparks and electrical surges. The powerhouse was designed using a brick-clad steel reinforced concrete skeleton with concrete floor slabs, which created a fire resistant building. In addition to its construction method, 17 Charles Street also contained other features to assist in temperature control, such as two ninety-ton ice machines and ammonia coils mounted on the roof, which acted as a method of heat exchange to cool the building. While the Charles Street building appears to have continued to serve as the primary power house for several decades, with the construction of a large modern power plant on the south side of Clinton Street in 1946, it appears the building at 17 Charles Street was used as a secondary power source and boiler facility.<sup>29</sup>

**219 Clinton Street**

While the AnSCO company had constructed a large reinforced concrete warehouse building at Charles Street near Field Street in 1936, by the 1950s a changing transportation system created the need for a new, modern warehouse and shipping building. With the growth of the national highway system and improved local roads in the post-World War II era, the use of vehicular transport, via tractor trailers and trucks, became increasingly popular to ship goods and products. In this era, the use of railroads as the primary mode of transporting goods significantly declined.

In August of 1953, AnSCO announced plans to build a new warehouse building, to be used primarily to house photographic film and paper, on Clinton Street near Roger Street. The building would be built on property on Clinton Street located along the railroad lines, where AnSCO operated a small storage and shipping building. The company also requested some upgrades be made to accommodate the new warehouse, including a new waste water line to be laid under Clinton Street. Once the company received approvals from the city, Frank W. O'Connell, Inc. was selected to construct the building from the designs of the AnSCO engineers, and ground was

<sup>29</sup> With the construction of the new power plant, the old power plant was slated to be "dismantled" (likely meaning that the machinery would be dismantled and removed) and the paper manufacturing operations would be expanded into the power plant. "AnSCO Plans New Plant at \$750,000 Cost," *Binghamton Press*, April 13, 1945, 14.

**United States Department of the Interior  
National Park Service**

**National Register of Historic Places  
Continuation Sheet**

Section 8 Page 12

**ANSCO COMPANY CHARLES  
STREET FACTORY BUILDINGS**

**Name of Property**  
**Broome County, New York**  
**County and State**

broken in fall of 1953. The cost of construction was given at \$250,000.<sup>30</sup> The building was simply designed with a steel skeleton and concrete block walls, clad in brick on elevations facing the street in an attempt to make it resemble the existing brick AnSCO buildings nearby. The Clinton Street warehouse featured access to the rail lines at the building's south side via loading docks that could accommodate up to three freight cars. The east side of the building was designed to accommodate trucks, designed with a canopy and truck docks to accommodate up to eleven vehicles. Construction of the building was completed in Spring of 1954.<sup>31</sup> The building was used by AnSCO until the 1990s and became the new shipping and receiving warehouse for the All-Spec Finishing Corporation in 1992.

**Industrial Architecture**

Industrial architecture is a broad category which includes many types of buildings that once served as factories, manufacturing plants, machine shops, and other types of functions. New York State passed a law on factory regulation in 1914 that defined a "factory" as any place where goods or products were manufactured or repaired, cleaned or sorted. Buildings such as mills, workshops, manufacturing businesses and all associated buildings, sheds and structures were included in this definition. The term factory can be used to describe a single building or to an entire facility of composed of any number of structures, and the term is synonymous with industrial architecture.<sup>32</sup>

The earliest industrial buildings typically featured simple, utilitarian designs based on function and the needs dictated by the interior production.<sup>33</sup> Industrial buildings of the nineteenth century relied on the natural elements for interior illumination, ventilation and even for the power to drive the belts and shafts, which in turn operated machinery. As a result, industrial buildings are often constructed in phases, with additions added to the building as need dictated and typically featured numerous window voids. Industrial buildings were typically not thought of as true "architecture" in the nineteenth-century, and in fact many architects lacked interest in

<sup>30</sup> "AnSCO Addition," *Binghamton Press*, January 25, 1954.

<sup>31</sup> "AnSCO Warehouse To Be Built on Firm's First Ward Property," *Binghamton Press*, February 18, 1953.

<sup>32</sup> Betsy H. Bradley, *The Works: The Industrial Architecture of the United States* (New York: Oxford University Press, 1999), 7-8.

<sup>33</sup> This bias is still present among historians and scholars, as there are few comprehensive studies of industrial architecture available. One of the best sources is Betsy Bradley's *The Works*, from which much of this discussion is taken.

**United States Department of the Interior  
National Park Service**

**National Register of Historic Places  
Continuation Sheet**

Section 8 Page 13

**ANSCO COMPANY CHARLES  
STREET FACTORY BUILDINGS**

**Name of Property  
Broome County, New York  
County and State**

industrial architecture due to the financial and economic limitations and a belief in the lack of artistic possibilities in their design. Factory design was often a mix of common empirical engineering with engineering based on rationalized, technological planning. Prior to the development of specialized engineers or architects, early factory design also involved a bit of luck and trial and error by builders and craftspeople.<sup>34</sup> As a result, most nineteenth-century industrial buildings were designed as anonymous collaborations between industrialists, engineers, local carpenters and mill builders.

Fires were a major concern of nineteenth-century industrial buildings, which often featured heated boilers to drive machinery, gas lighting and volatile compounds. As a result many industrial buildings were built utilizing fire retardant materials. Resistance to fire would be a major driving force behind the development of new construction methods and materials in industrial architecture in the nineteenth and twentieth centuries.

One of the most common industrial construction methods in the nineteenth century in New York State is brick or stone with heavy timber framing, a method broadly known as mill construction for its early and widespread use in the construction of fabric and textile mills in Massachusetts and New England in the early 1800s. Later in the century the use of iron or steel framing became more popular, as technology advanced and allowed for improvements in fire resistance. These types of buildings were generally long and narrow and typically featured numerous windows along the elevations, maximizing interior illumination and ventilation. Sometimes skylights or rooftop monitors were used to illuminate upper floors. Exterior features could consist of external fire escapes and ladders, loading bays (sometimes raised or covered), hoists, and other functional features. Flat roofs were popular, and could be used to accommodate water tanks and elevator penthouses.<sup>35</sup>

By the end of the nineteenth century other materials were also introduced to industrial architecture. The use of structural iron as a building material was introduced to industrial architecture as early as the 1820s, used in the framing and as structural columns in textile mills. Cast iron was frequently used for columns, preferred over wrought iron for the fact that it would develop a surface patina of rust that would not compromise its structure,

<sup>34</sup> Bradley, 14-15.

<sup>35</sup> Bradley, 137-138.

**United States Department of the Interior  
National Park Service**

**National Register of Historic Places  
Continuation Sheet**

Section 8 Page 14

**ANSCO COMPANY CHARLES  
STREET FACTORY BUILDINGS**

**Name of Property**  
**Broome County, New York**  
**County and State**

while wrought iron would rust more thoroughly leading to structural deficiency. As early as the 1870s builders introduced the use of unglazed, hollow terra cotta tiles into industrial construction. Often used in tandem with steel or iron framing, this system was used in exterior curtain wall construction, either exposed or covered with stucco or brick. The interior air spaces of the hollow terra cotta tiles allowed for insulation, and the system was noted as more heat and moisture proof than brick.<sup>36</sup>

One of the next major milestones in industrial architecture was the development and refinement of steel reinforced concrete. This building system was initially pioneered by Ernest Ransom, who, at the end of the nineteenth century, invented a method for embedding steel rods into concrete as a means of creating a solid, fireproof system of construction. This new structural system could then support concrete floor slabs, eliminating a wood structural system which was highly susceptible to fires and collapse in industrial applications. While this new structural system eliminated the threat of fires it also had the added benefit of creating large, open floor plans with flexible interior spaces, which could later be configured with partitions depending on the needs of the company within. Reinforced concrete structural systems were also modular, meaning they were composed of a repetition of equally sized units or "modules." Modularity made them less expensive and easier to construct since components could be manufactured of equal size and shape and quickly installed on site, with little customizing of individual features or elements, therefore reducing expensive hand-building labor. Nonstructural walls were inserted in the space between the concrete columns and, since they were non-load bearing, could be comprised solely of industrial metal-sash windows, occasionally with a narrow spandrel of brick, allowing light to flood the interior spaces. This construction system was popularized by Detroit-based architect Albert Kahn, who showcased the technology in his landmark Packard Automobile Plant in Detroit, built between 1903 and 1911. Kahn and his contemporaries, including the Boston-based firm of Lockwood, Green and Company, built reinforced concrete industrial buildings across the country. During this era, industrial architecture began to emerge as a distinct architectural and engineering field requiring specialized

<sup>36</sup> Bradley, 137-139.

**United States Department of the Interior  
National Park Service**

**National Register of Historic Places  
Continuation Sheet**

Section 8 Page 15

**ANSCO COMPANY CHARLES  
STREET FACTORY BUILDINGS**

**Name of Property**  
**Broome County, New York**  
**County and State**

designers, elevating industrial architecture out of the realm of anonymous local builders working by trial and error and into practice as a specialized and scientific field.<sup>37</sup>

The use of steel reinforced concrete for industrial architecture was widely used throughout the 1910s and 1920s and was common for several decades afterwards. During the 1930s the use of steel framing, often clad in brick or terra cotta tile, became more popular for industrial buildings. While structural steel had been used for industrial buildings beginning in the late nineteenth century, by the turn of the twentieth century steel began to replace cast iron as a structural material. Steel offered great tensile and compressive strength, allowing for stability, wide spans, and resistance to the vibrations of machinery. Steel could be manufactured into standardized members, quickly assembled on site. Riveting replaced the earlier bolts as a fastening system, but by the 1920s, welds were used to connect steel members, a small but significant improvement that created stronger connections between steel members, allowing for lighter frames. Similar to reinforced concrete, steel skeletons offered nonstructural walls that could feature multiple large windows, large and flexible open interiors that could be adapted for a variety of different uses, and also an improved level of resistance to fire. Steel columns and beams could be encased in poured concrete to provide resistance to fire, or could have concrete sprayed on to them, a material sometimes known as Gunitite. As electrical technology improved, the need for exterior illumination was less critical, and smaller windows could be utilized. Likewise internal environmental systems improved, creating better ventilation that helped to reduce the risk for fires. Internal sprinkler systems, utilized since the 1880s, also became more common place.<sup>38</sup>

The buildings at 15 and 17 Charles Street are excellent examples of the type of simple, functional industrial architecture of the early twentieth century. Both buildings reflect the simple, austere appearance of industrial buildings from the early nineteenth century. These buildings both feature numerous segmental-arched windows, which in the era before good electrical light would have been critical to provide interior illumination. They also aided in ventilating the building. Both buildings were constructed to offer the highest degree of fire resistance

<sup>37</sup> Refer to Reyner Banham, *A Concrete Atlantis: U.S. Industrial Building and European Modern Architecture, 1900-1925* (Cambridge, MA: MIT Press, 1986), 31.

<sup>38</sup> Bradley, 150-154.

**United States Department of the Interior  
National Park Service**

**National Register of Historic Places  
Continuation Sheet**

Section 8 Page 16

**ANSCO COMPANY CHARLES  
STREET FACTORY BUILDINGS**

**Name of Property**  
**Broome County, New York**  
**County and State**

available at the time. The buildings represent a turning point in industrial construction, built just before reinforced concrete buildings became widely utilized for factory construction, including other AnSCO buildings at the Charles Street plant built in the 1920s, 30s and 40s. The large building at 15 Charles Street was constructed as a load-bearing brick building, with a heavy wood timber system for columns and floors. While the wood would be susceptible to fire, the brick exterior provided some fire resistance. The adjacent 17 Charles Street, created as a power house, would have had more serious fire resistance issues, as it was the location of several boilers and dynamos used to power other AnSCO buildings. As a result, it was constructed of reinforced concrete with a brick skin, giving it additional fire resistance. The 1918 Sanborn map indicates that 17 Charles Street historically featured ammonia coils on the roof, which were used to help cool the building and protect it from overheating. A tall brick chimney once stood adjacent to the building at 17 Charles Street, but it appears to have been removed before the 1960s, perhaps once the new, larger power plant was constructed in 1946. Overall, both buildings are excellent and largely intact examples of early twentieth century industrial buildings.

The building at 219 Charles Street reflects common architectural design for industrial warehouses in the mid-twentieth century. The simple concrete block and steel frame system provided durable and affordable construction, while also creating vast open interiors suitable for storage. While located adjacent to rail lines, the multiple bays on the building's east elevation reflect the growing importance of shipping via tractor trailers on the nation's growing highway system in the 1950s and the need for multiple modes, and therefore multi-modal buildings, for transporting raw materials and finished goods.

**Conclusion**

The AnSCO Company Charles Street Factory Buildings represent a rare remaining collection of factory buildings with strong ties to the nationally significant AnSCO camera and film company. Once part of a sprawling industrial site that dominated Binghamton's First Ward neighborhood through most of the twentieth century, they are now the only reminders of its presence. The nomination includes buildings constructed at the earliest phase of growth for AnSCO in the early twentieth century as well as a building constructed when the company was at the zenith of its importance in the mid-1900s. Together, they are a reminder of Binghamton's golden age of technological development and its contribution to our nation in the twentieth century.

United States Department of the Interior  
National Park Service

National Register of Historic Places  
Continuation Sheet

Section 9 Page 1

**ANSCO COMPANY CHARLES  
STREET FACTORY BUILDINGS**  
Name of Property  
Broome County, New York  
County and State

**Bibliography**

*Agfa Ansco, 1842-1942: 100 Years of American Photography.* General Aniline & Film, 1942.

"AnSCO Advertisement." *Photo-era Magazine* 31 (1913): 329.

<http://books.google.com/books?id=oh3OAAAAMAAJ&dq=AnSCO%20%22paper%20plant%22&pg=PA329#v=onepage&q&f=false>.

AnSCO Company.. *Cyko : The Positive of Photography.* Binghamton, N.Y.: Company, 1914.

Bergmann Associates. *The First Ward Redevelopment Plan for the City of Binghamton, New York.* Report. Rochester, Nov 2010. Accessed December 12, 2011.

<http://www.cityofbinghamton.com/userfiles/file/First%20Ward%20Redevelopment%20Plan/Drafts%20of%20pre-nomination%20study/Final%20Document%20-%20Sec%201.pdf>.

*Binghamton Press.* "AnSCO Addition." January 25, 1954.

[http://fultonhistory.com/Newspaper%204/Binghamton%20NY%20Press%20Grayscale/Binghamton%20NY%20Press%20Grayscale%201954.pdf/Binghamton%20NY%20Press%20Grayscale%201954%20-%2000868.pdf#xml=http://fultonhistory.com/dtSearch/dtisapi6.dll?cmd=getpdfhits&u=5ad04700&DocId=5814055&Index=Z%3a%2fFulton%20Historical&HitCount=4&hits=33b+340+341+343+&SearchForm=C%3ainetpubwwwrootFulton\\_New\\_form.html&.pdf](http://fultonhistory.com/Newspaper%204/Binghamton%20NY%20Press%20Grayscale/Binghamton%20NY%20Press%20Grayscale%201954.pdf/Binghamton%20NY%20Press%20Grayscale%201954%20-%2000868.pdf#xml=http://fultonhistory.com/dtSearch/dtisapi6.dll?cmd=getpdfhits&u=5ad04700&DocId=5814055&Index=Z%3a%2fFulton%20Historical&HitCount=4&hits=33b+340+341+343+&SearchForm=C%3ainetpubwwwrootFulton_New_form.html&.pdf).

*Binghamton Press.* "AnSCO May Construct Clinton St. Warehouse." August 19, 1953.

[http://fultonhistory.com/Newspaper%204/Binghamton%20NY%20Press%20Grayscale/Binghamton%20NY%20Press%20Grayscale%201953%20pdf/Binghamton%20NY%20Press%20Grayscale%201953%200%208012.pdf#xml=http://fultonhistory.com/dtSearch/dtisapi6.dll?cmd=getpdfhits&u=37276de5&DocId=5808900&Index=Z%3a%2fFulton%20Historical&HitCount=14&hits=4c9+4cc+4ce+4cf+4dc+4e2+9a6+9be+c20+c2c+dda+e27+e54+e75+&SearchForm=C%3ainetpubwwwrootFulton\\_New\\_form.html&.pdf](http://fultonhistory.com/Newspaper%204/Binghamton%20NY%20Press%20Grayscale/Binghamton%20NY%20Press%20Grayscale%201953%20pdf/Binghamton%20NY%20Press%20Grayscale%201953%200%208012.pdf#xml=http://fultonhistory.com/dtSearch/dtisapi6.dll?cmd=getpdfhits&u=37276de5&DocId=5808900&Index=Z%3a%2fFulton%20Historical&HitCount=14&hits=4c9+4cc+4ce+4cf+4dc+4e2+9a6+9be+c20+c2c+dda+e27+e54+e75+&SearchForm=C%3ainetpubwwwrootFulton_New_form.html&.pdf).

*Binghamton Press.* "AnSCO Plans New Plant at \$750,000 Cost." April 13, 1945.

<http://fultonhistory.com/Newspaper4/Binghamton%20NY%20Press%20Grayscale/Binghamton%20NY%20Press%20Grayscale%201945%20pdf/Binghamton%20NY%20Press%20Grayscale%201945%20-%2000865.pdf>.

*Binghamton Press.* "AnSCO Warehouse Ordinances Win Speedy OK." September 9, 1953.

[http://fultonhistory.com/Newspaper%204/Binghamton%20NY%20Press%20Grayscale/Binghamton%20NY%20Press%20Grayscale%201953%20pdf/Binghamton%20NY%20Press%20Grayscale%201953%200%208835.pdf#xml=http://fultonhistory.com/dtSearch/dtisapi6.dll?cmd=getpdfhits&u=5f0cd5d3&DocId=5809718&Index=Z%3a%2fFulton%20Historical&HitCount=11&hits=1ff+200+21d+224+245+24f+2c7+306+3c9+3d3+3f4+&SearchForm=C%3ainetpubwwwrootFulton\\_New\\_form.html&.pdf](http://fultonhistory.com/Newspaper%204/Binghamton%20NY%20Press%20Grayscale/Binghamton%20NY%20Press%20Grayscale%201953%20pdf/Binghamton%20NY%20Press%20Grayscale%201953%200%208835.pdf#xml=http://fultonhistory.com/dtSearch/dtisapi6.dll?cmd=getpdfhits&u=5f0cd5d3&DocId=5809718&Index=Z%3a%2fFulton%20Historical&HitCount=11&hits=1ff+200+21d+224+245+24f+2c7+306+3c9+3d3+3f4+&SearchForm=C%3ainetpubwwwrootFulton_New_form.html&.pdf).

United States Department of the Interior  
National Park Service

National Register of Historic Places  
Continuation Sheet

Section 9 Page 2

**ANSCO COMPANY CHARLES  
STREET FACTORY BUILDINGS**  
Name of Property  
Broome County, New York  
County and State

- Binghamton Press*. "AnSCO Warehouse To Be Built on Firm's First Ward Property." February 18, 1953.  
[http://fultonhistory.com/Newspaper%204/Binghamton%20NY%20Press%20Grayscale/Binghamton%20NY%20Press%20Grayscale%201953%20pdf/Binghamton%20NY%20Press%20Grayscale%201953%20%209239.pdf#xml=http://fultonhistory.com/dtSearch/dtisapi6.dll?cmd=getpdfhits&u=2e4751d1&DocId=5810122&Index=Z%3a%2fFulton%20Historical&HitCount=12&hits=4f2+4f3+4fb+513+7d5+81e+8b1+8d6+8ff+91e+9b7+9c4+&SearchForm=C%3ainetpubwwwrootFulton\\_New\\_form.html&.pdf](http://fultonhistory.com/Newspaper%204/Binghamton%20NY%20Press%20Grayscale/Binghamton%20NY%20Press%20Grayscale%201953%20pdf/Binghamton%20NY%20Press%20Grayscale%201953%20%209239.pdf#xml=http://fultonhistory.com/dtSearch/dtisapi6.dll?cmd=getpdfhits&u=2e4751d1&DocId=5810122&Index=Z%3a%2fFulton%20Historical&HitCount=12&hits=4f2+4f3+4fb+513+7d5+81e+8b1+8d6+8ff+91e+9b7+9c4+&SearchForm=C%3ainetpubwwwrootFulton_New_form.html&.pdf).
- Browne, Charles. *AnSCO: Cameras, Construction & Community*. Binghamton, NY: Roberson Museum, 2002.
- Camp, William L. "ANSCO Chronology." Bill's Photo History. March 12, 2004. Accessed November 14, 2011.  
<http://billsphotohistory.com/3.html>.
- Chaffee, Bob. "Anitec Facilities 1999." Photographic Memorabilia. January 27, 2011.  
[http://www.photomemorabilia.co.uk/Ilford/Anitec\\_Binghamton.html](http://www.photomemorabilia.co.uk/Ilford/Anitec_Binghamton.html).
- "Construction." *Electrical World* 66, no. 23 (1915): 1286.  
<http://books.google.com/books?id=Jm0fAQAAMAAJ&dq=AnSCO%20power%20house&pg=PA1286#v=onepage&q&f=false>.
- Fredrickson, Maggie, Fredrickson Bruce, and Cattaraugus County Bicentennial History Book Committee. *Cattaraugus County Bicentennial History 1808-2008 : 200 Years of Adventure--past, Present and Future*. [s.l.]: [s.n.], 2008.
- Marder, William, and Estelle Marder. *Anthony, the Man, the Company, the Cameras: An American Photographic Pioneer : 140 Year History of a Company from Anthony to AnSCO, to GAF*. Edited by Robert G. Duncan. Plantation, Fla.: Pine Ridge Pub., 1982.
- Peres, Michael R. *Focal Encyclopedia of Photography: Digital Imaging, Theory and Applications, History, and Science*. Oxford: Focal Press, 2007.
- The Story of Agfa AnSCO: 1842-1939*. Binghamton, NY: Agfa AnSCO, 1939.
- Walkowski, Jennifer. *Industrial Resources of Broome County, New York Multiple Property Documentation Form*. Report. Buffalo: Clinton Brown Company Architecture, 2012.

**Also:**

- Sanborn Fire Insurance Maps
- Ancestry.com database files including census records
- HeritageQuest database files
- Vertical Files, Local History and Genealogy Center, Binghamton Public Library, Binghamton, NY.



United States Department of the Interior  
National Park Service

National Register of Historic Places  
Continuation Sheet

Section 10 Page 1

**ANSCO COMPANY CHARLES  
STREET FACTORY BUILDINGS**

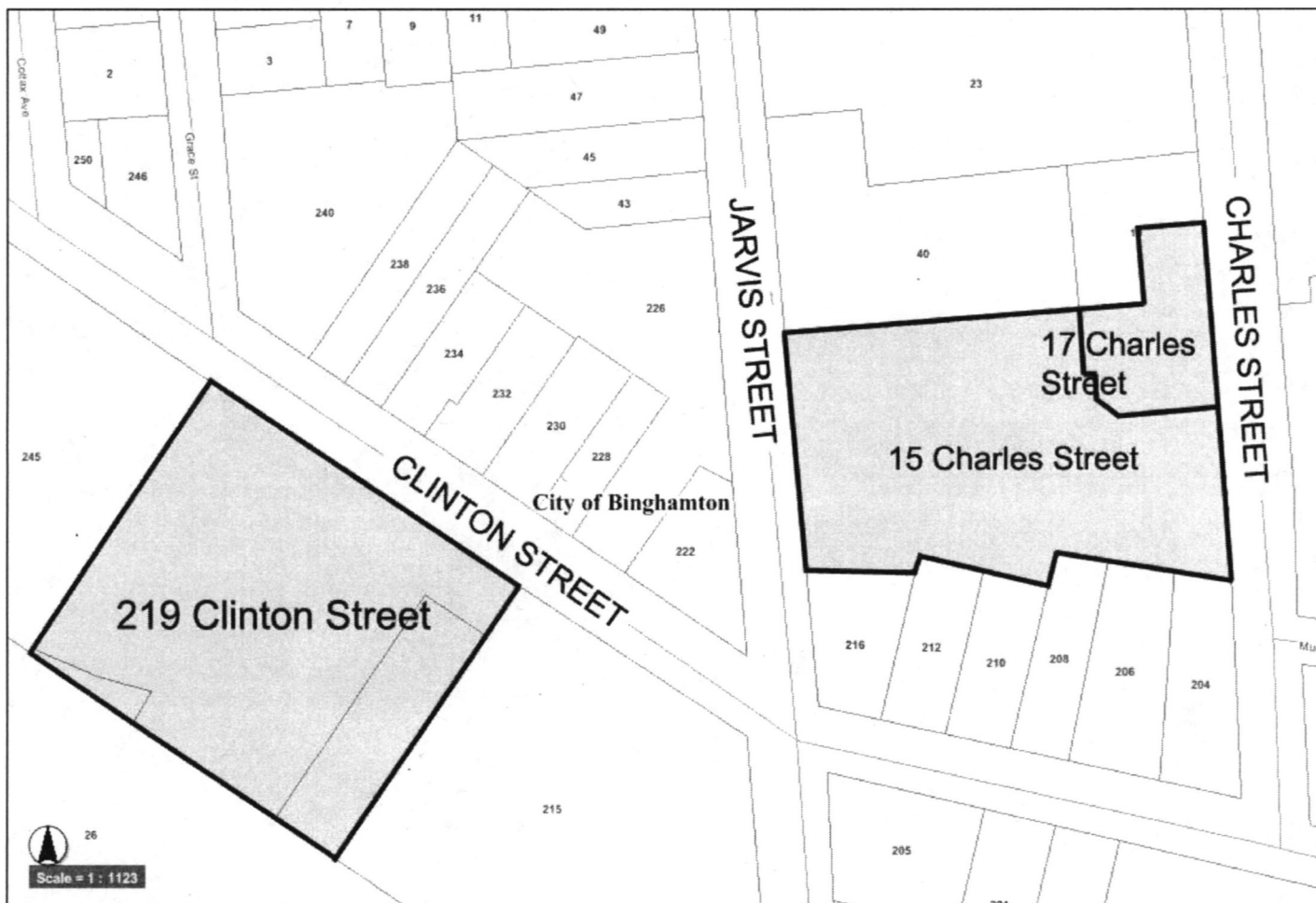
Name of Property  
Broome County, New York  
County and State

**Verbal Boundary Description**

The boundary, which includes two discontinuous parcels, is indicated by a heavy line on the enclosed tax map with scale.

**Boundary Justification**

The boundary was drawn to encompass the lots currently associated with these buildings. The Charles Street buildings are adjacent, while the Clinton Street building is across the street and separated by several intervening, unrelated buildings. Once part of a much larger complex of factory buildings used by the AnSCO company from the 1910s until 1998, these buildings are the only surviving buildings associated with the Charles Street factory .



United States Department of the Interior  
National Park Service

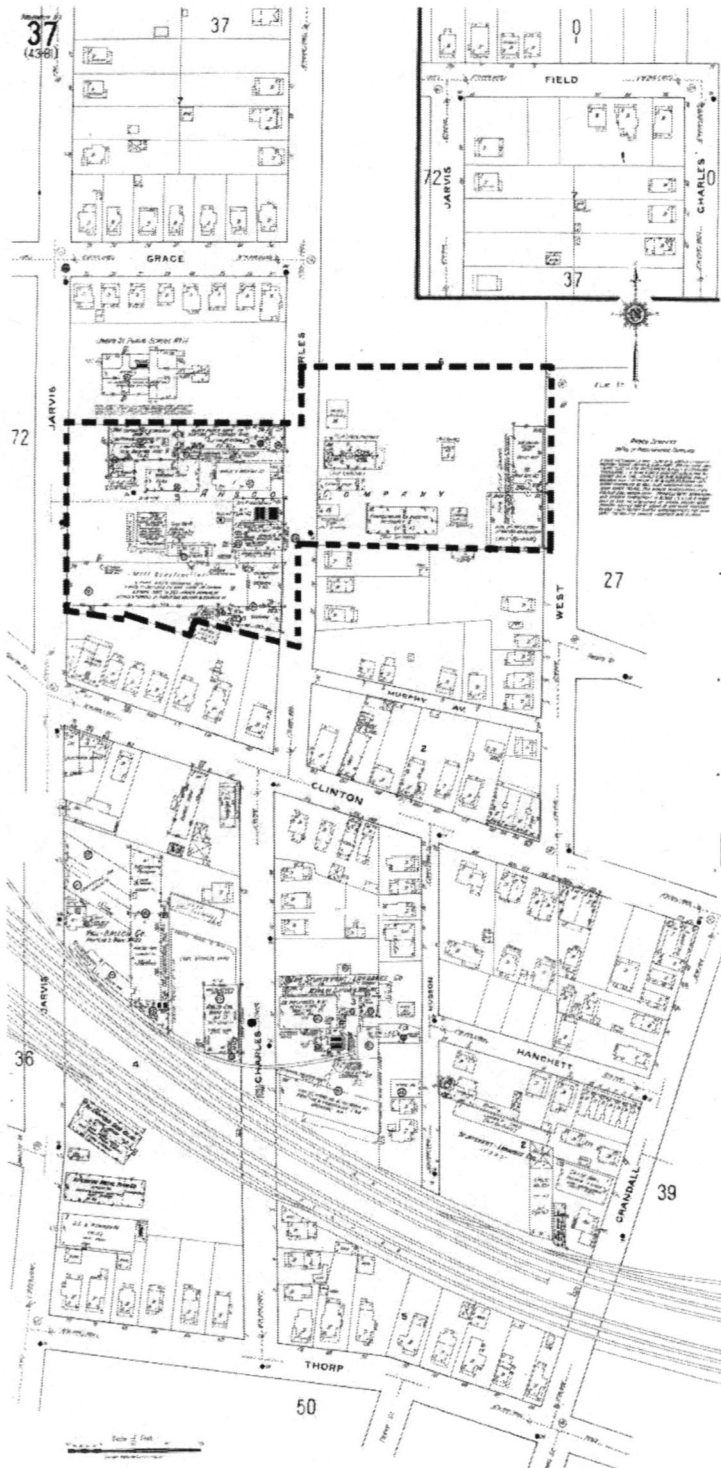
National Register of Historic Places  
Continuation Sheet

Section addendum Page 1

**ANSCO COMPANY CHARLES  
STREET FACTORY BUILDINGS**

Name of Property  
Broome County, New York  
County and State

Additional Information



**Combined 1918 Sanborn Maps of Site**

Dashed line indicates approximate boundaries of AnSCO company factory site on Charles Street.

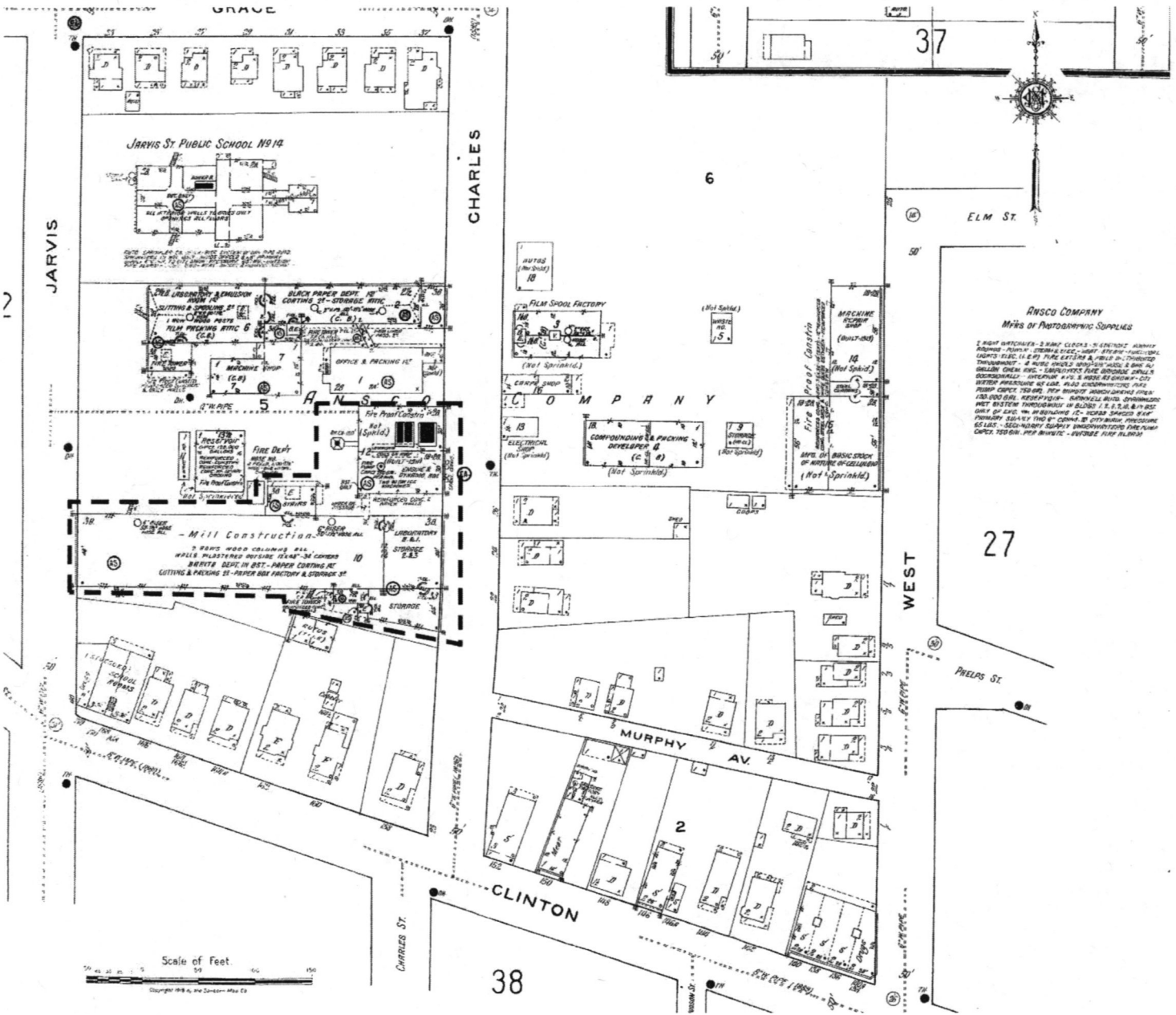
United States Department of the Interior  
National Park Service

National Register of Historic Places  
Continuation Sheet

Section addendum Page 2

**ANSCO COMPANY CHARLES  
STREET FACTORY BUILDINGS**

Name of Property  
Broome County, New York  
County and State



Detail of 1918 Sanborn Map

Dashed lines indicate location of 15 Charles Street and 17 Charles Street in relation to other neighboring AnSCO properties.

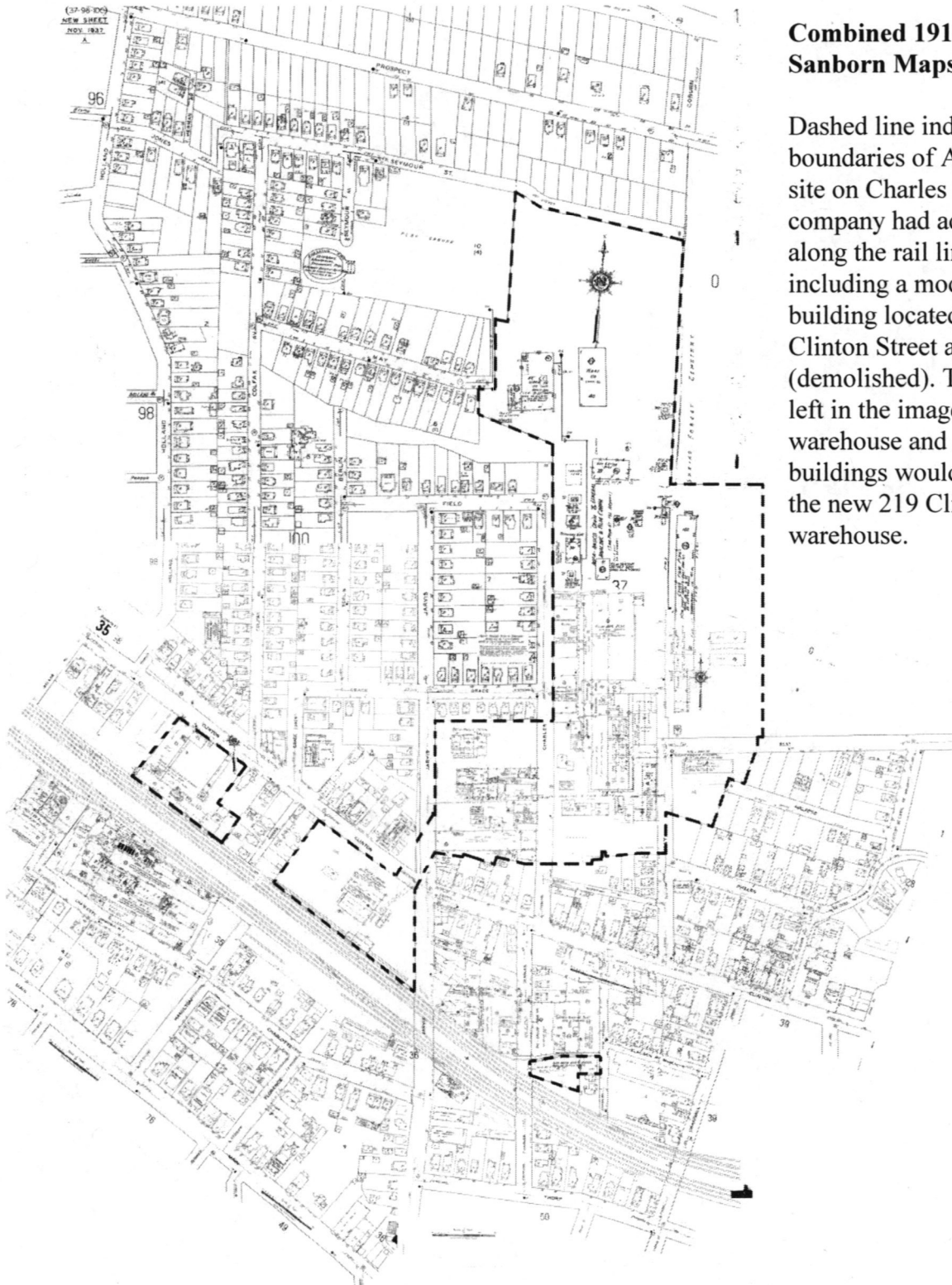
United States Department of the Interior  
National Park Service

National Register of Historic Places  
Continuation Sheet

Section addendum Page 3

**ANSCO COMPANY CHARLES  
STREET FACTORY BUILDINGS**

Name of Property  
Broome County, New York  
County and State



**Combined 1918 – Updated to 1950  
Sanborn Maps of Site**

Dashed line indicates approximate boundaries of AnSCO company factory site on Charles Street. Note that the company had additional facilities along the rail lines near Clinton Street including a modern power house building located at the corner of Clinton Street and Jarvis Street (demolished). The dotted box to the left in the image is the existing warehouse and shipping yard. These buildings would be demolished for the new 219 Clinton Street warehouse.

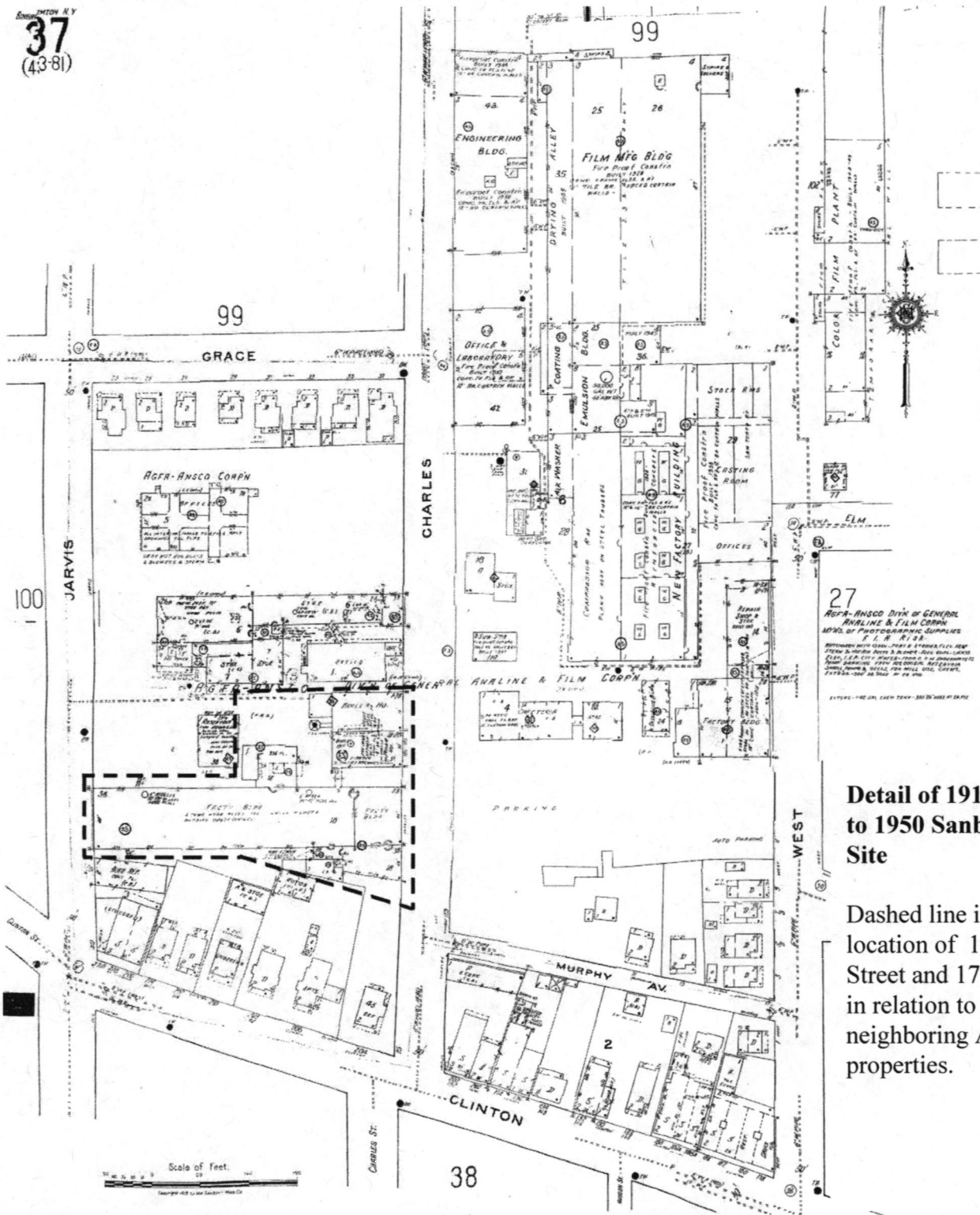
United States Department of the Interior  
National Park Service

National Register of Historic Places  
Continuation Sheet

Section addendum Page 4

**ANSCO COMPANY CHARLES  
STREET FACTORY BUILDINGS**

Name of Property  
Broome County, New York  
County and State



27  
AGFA-ANSCO DIVN OF GENERAL  
ANALINE & FILM CORPN  
MFGS OF PHOTOGRAPHIC SUPPLIES  
P. O. B. R. 28

RETIRED WITH GRAD. PAID & STAMPA FILM REEL  
FROM 30-1000000000 & 30-1000000000  
ELN. L.P. CO. & WARR. CO. & WARR. CO. & WARR. CO.  
STAMP WORKS. 1000000000 & 1000000000  
STAMP WORKS. 1000000000 & 1000000000  
STAMP WORKS. 1000000000 & 1000000000

STREETS - 1/4 IN. EACH YEAR - 300' WIDE AT 1/4 IN.

**Detail of 1918 – Updated  
to 1950 Sanborn Map of  
Site**

Dashed line indicates  
location of 15 Charles  
Street and 17 Charles Street  
in relation to other  
neighboring AnSCO  
properties.

United States Department of the Interior  
National Park Service

National Register of Historic Places  
Continuation Sheet

Section addendum Page 5

**ANSCO COMPANY CHARLES  
STREET FACTORY BUILDINGS**

**Name of Property**  
**Broome County, New York**  
**County and State**

Historic Images



**Cover, "Cyko Paper" Promotional  
Booklet, AnSCO Company (1914)**

Although somewhat stylized and simplified, this view is clearly taken looking north-west from Charles Street just north of Clinton Street. The large rectangular building in the foreground is 15 Charles Street (the paper plant), while the building to its right is 17 Charles Street. Note the tall AnSCO chimney to the rear (west) of the power plant. The building with the hipped roof appears to be the original Monarch Paper Company building, Building No. 1, which was first occupied in 1900 and demolished in 1960. The long rectangular building next to that with the stepped gable front was used for various paper and laboratory purposes. The function and identity building in the background is a mystery, as it does not appear on the 1918 Sanborn map.

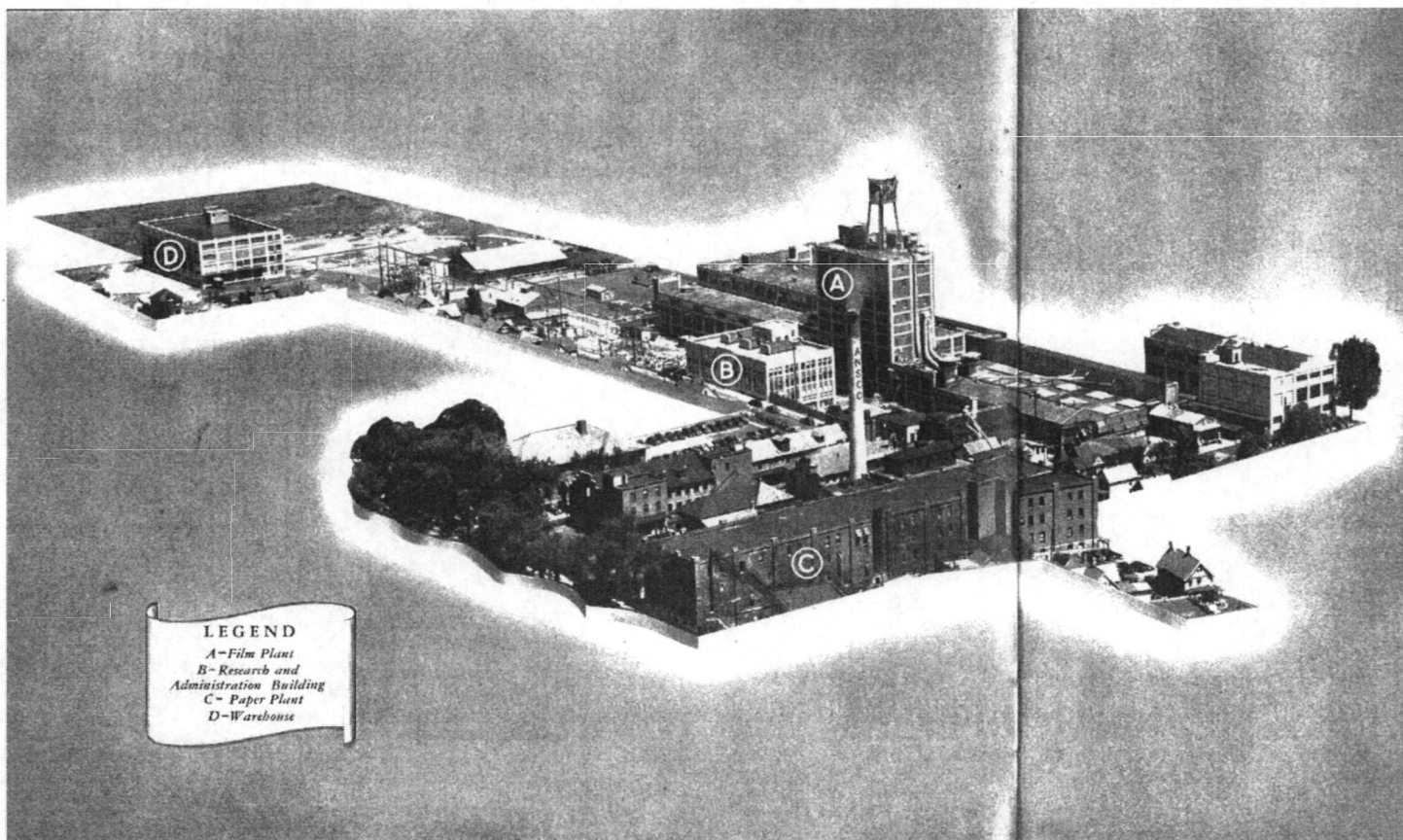
United States Department of the Interior  
National Park Service

National Register of Historic Places  
Continuation Sheet

Section addendum Page 6

**ANSCO COMPANY CHARLES  
STREET FACTORY BUILDINGS**

Name of Property  
Broome County, New York  
County and State



**The AnSCO Company Charles Street Factory, 1939**

From *The Story of Agfa AnSCO 1842-1939*, page 4-5

An excellent image of the Charles Street Factory before World War II. Here, 15 Charles Street is marked with a "C" as the Paper Plant (bottom center), with the Power House and Boiler House building just behind it. Behind are the large reinforced concrete film plant and the Administration Building. This image gives a good view of the size and configuration of the factory site.

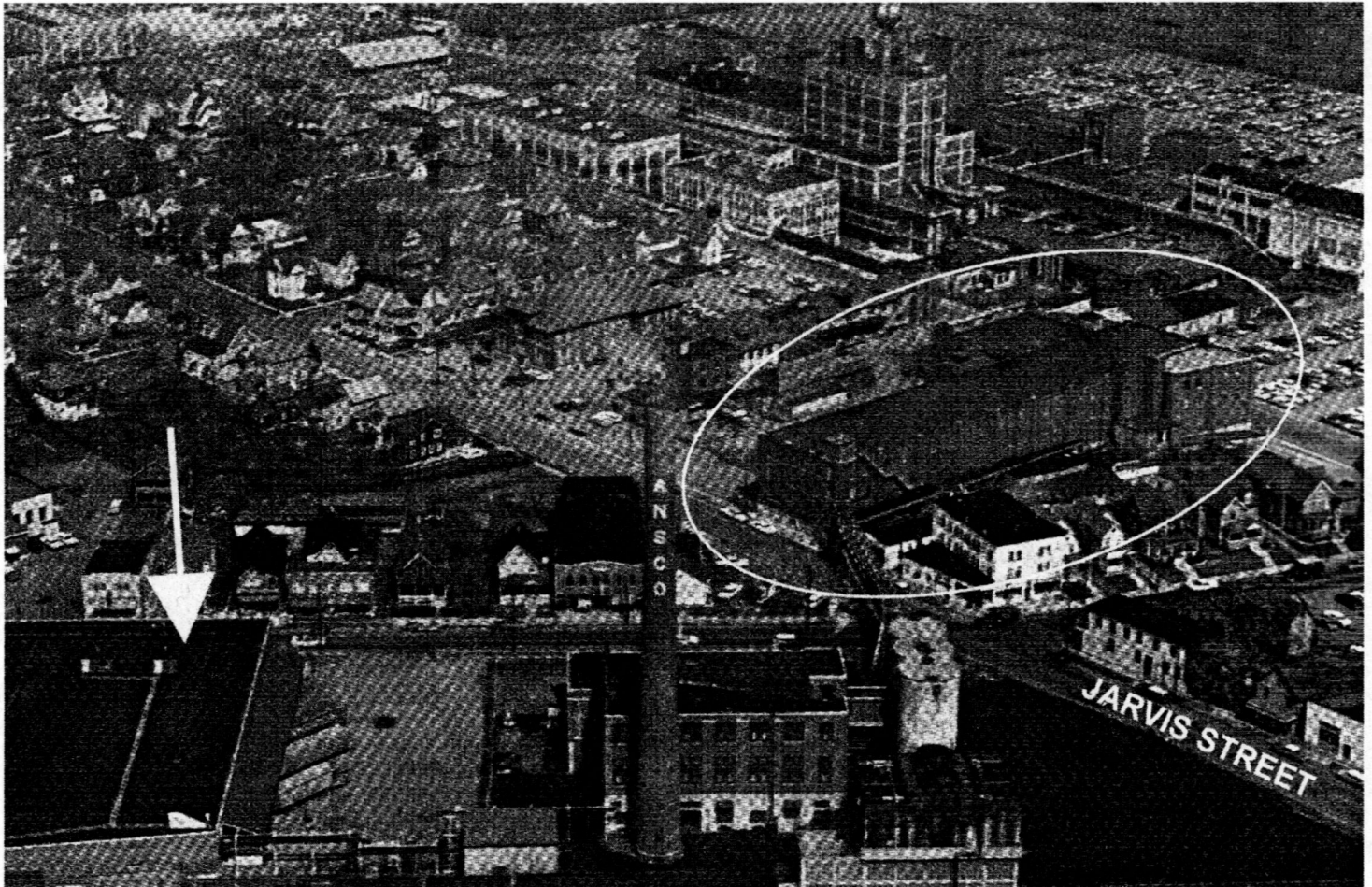
United States Department of the Interior  
National Park Service

National Register of Historic Places  
Continuation Sheet

Section addendum Page 7

**ANSCO COMPANY CHARLES  
STREET FACTORY BUILDINGS**

**Name of Property**  
**Broome County, New York**  
**County and State**



**Aerial View of AnSCO Factory, ca. 1964**

From *AnSCO: Cameras, Construction & Community*, page 3.

This view shows the size and scale of the AnSCO company facilities along Jarvis and Charles Streets near Clinton Street after World War II. The buildings at 15 and 17 Charles Street are circled for reference, and an arrow marks the 219 Clinton Street warehouse. Notice the large new power plant in the foreground of the image (bottom, center) which was built in 1946. The raised conduits are visible, crossing over Charles Street to the building's north, connecting to the west elevation of 15 Charles Street. This power facility appears to have been constructed to boost the capacity or replace the functionality of the smaller and older 17 Charles Street building.

**Construction of the new AnSCO Factory Building, 1929**

From *AnSCO: Cameras, Construction & Community*, page 9.

United States Department of the Interior  
National Park Service

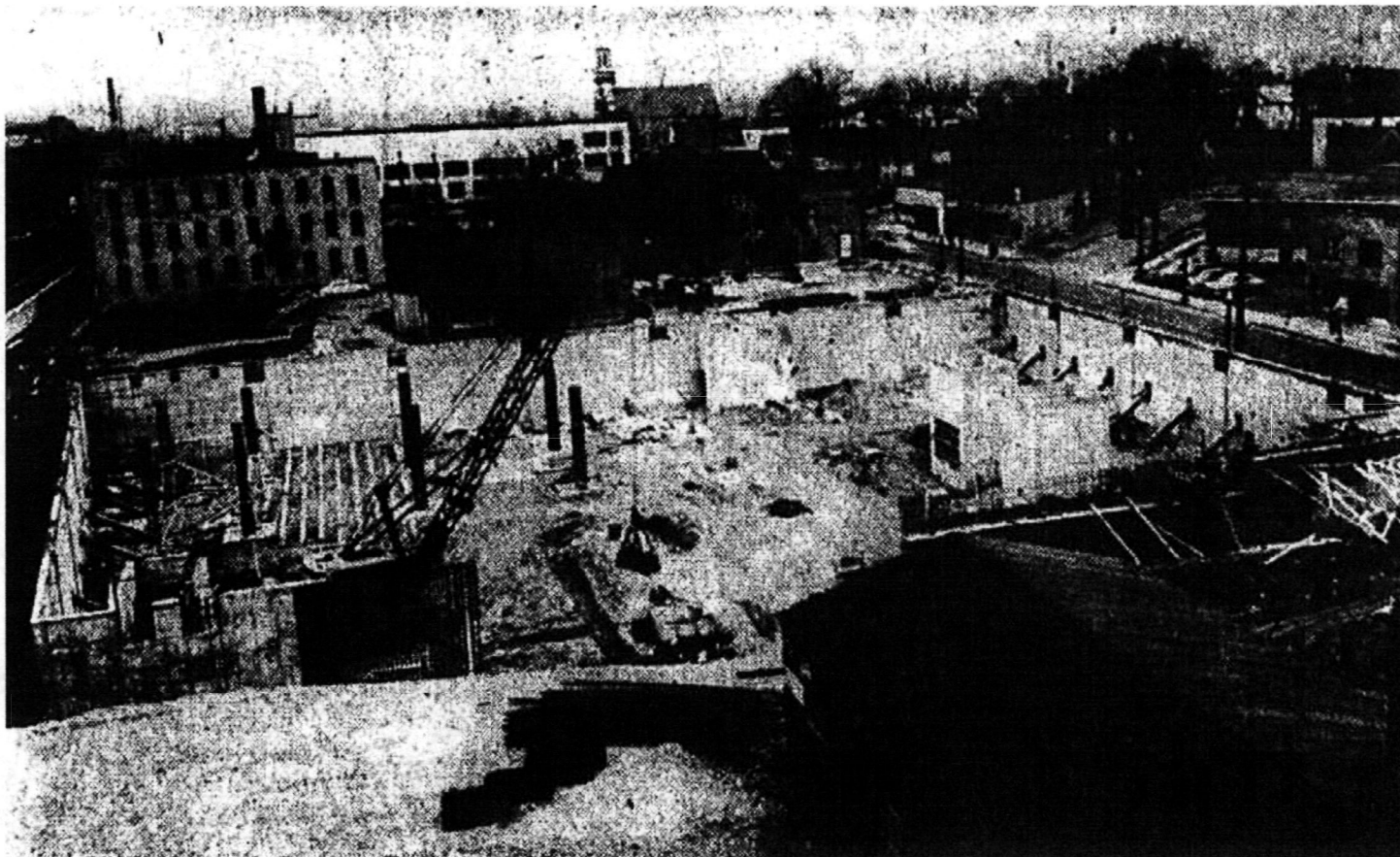
National Register of Historic Places  
Continuation Sheet

Section addendum Page 8

**ANSCO COMPANY CHARLES  
STREET FACTORY BUILDINGS**

Name of Property  
Broome County, New York  
County and State

An excellent example of the newer reinforced concrete factory buildings that were added to the Charles Street beginning in the 1920s. The building here is the Film Plant which, when crowned with its large water tower, would become synonymous with the Ansco Charles Street plant.



**Construction of the new Ansco Warehouse at Clinton Street, 1954**

*From Binghamton Press. "Ansco Addition." January 25, 1954.*

This image shows the construction of the foundation for the Ansco warehouse in January of 1954, where it was noted that construction had started in fall of 1953. This image shows the large interior volume of the building, provided by its grid of structural steel, as well as its exterior shell of concrete block, clad in brick at the Clinton Street elevation.

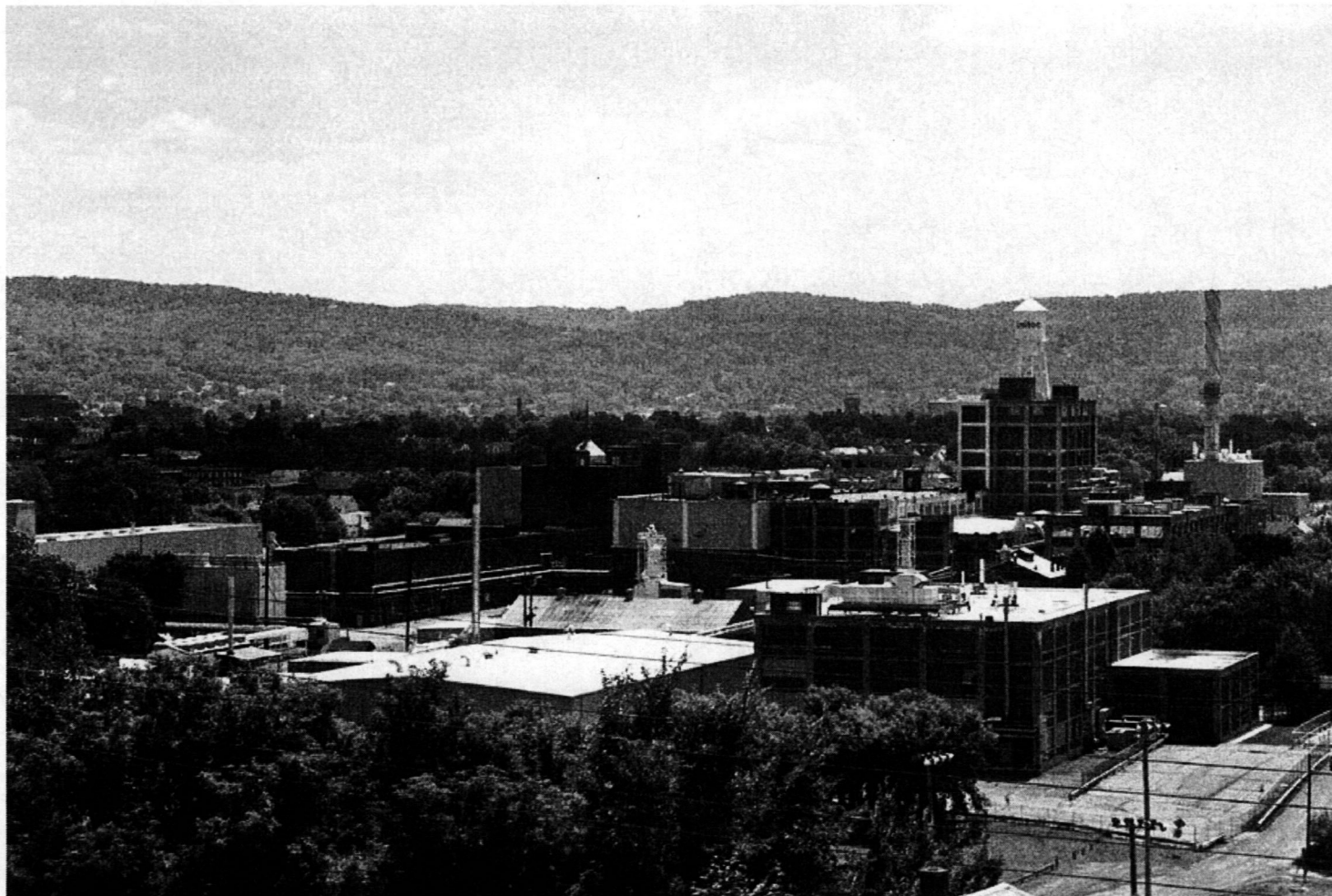
United States Department of the Interior  
National Park Service

National Register of Historic Places  
Continuation Sheet

Section addendum Page 9

**ANSCO COMPANY CHARLES  
STREET FACTORY BUILDINGS**

**Name of Property**  
**Broome County, New York**  
**County and State**



**The AnSCO (Anitec) Factory, Charles Street (1999, by Bob Chaffee)**

This image, taken looking south-west from around the northern end of Charles Street shows the expanse of buildings, largely reinforced concrete buildings from the 1920s-1950s. 15 and 17 Charles Street are located just outside of this image, at the right. The buildings in this view would all be demolished in 2000 to make way for redevelopment.

United States Department of the Interior  
National Park Service

National Register of Historic Places  
Continuation Sheet

Section addendum Page 10

**ANSCO COMPANY CHARLES  
STREET FACTORY BUILDINGS**

Name of Property  
Broome County, New York  
County and State



**Aerial view of former AnSCO Company Charles Street factory site, 2010**

In a comparison between the historic aerial images from 1939 and 1964, note that the majority of the former AnSCO company factory has been demolished. The sole remaining significant buildings, here circled, are those at 15 and 17 Charles Street and 219 Clinton Street. The brick industrial buildings on Charles Street represent some of the earliest buildings built by the AnSCO company in Binghamton.

United States Department of the Interior  
National Park Service

**ANSCO COMPANY CHARLES  
STREET FACTORY BUILDINGS**

**National Register of Historic Places  
Continuation Sheet**

Name of Property

Broome County, New York

County and State

Section number photos Page 1

---

Photographer: Jennifer Walkowski and Clinton E. Brown  
Clinton Brown Company Architecture  
653 Main Street, Suite 104  
Buffalo, New York 14203

Date: 2011-2012

Tiff Files: CD-R of .tiff files on file at  
National Park Service  
Washington DC

and

New York SHPO  
PO Box 189  
Waterford, NY 12188

Photo List:

- 0001 - 15 Charles Street, east elevation looking NW
- 0002 - 15 Charles Street, east elevation (note two bays at left are historic addition)
- 0003 - 17 Charles Street, east elevation looking NW
- 0004 - 17 Charles Street (foreground) and 15 Charles Street (rear), looking SW
- 0005 - 15 Charles Street, north and west elevations looking SE
- 0006 - 17 Charles Street, first floor interior of physical therapy space, showing fire wall
- 0007 - 17 Charles Street, second floor interior, looking south
- 0008 - 15 Charles Street, entry lobby from west entrance door
- 0009 - View of typical, un-rehabilitated basement space
- 0010 - 15 Charles Street, view of un-rehabilitated area of first floor
- 0011 - 15 Charles Street, first floor corridor, showing retention of historic industrial features
- 0012 - 15 Charles Street, detail of first floor interior showing construction method (visible throughout building)
- 0013 - 15 Charles Street, first floor view of Catholic Housing offices
- 0014 - 15 Charles Street, first floor view of FLI premises
- 0015 - 15 Charles Street, dance studio reception space
- 0016 - 15 Charles Street, view of typical stair
- 0017 - 15 Charles Street, open hallway typical of 2<sup>nd</sup> and 3<sup>rd</sup> floor
- 0018 - 15 Charles Street, elevator lobby, showing retained freight elevator

See continuation sheet

United States Department of the Interior  
National Park Service

**ANSCO COMPANY CHARLES  
STREET FACTORY BUILDINGS**

**Name of Property**

**National Register of Historic Places  
Continuation Sheet**

**Broome County, New York**

**County and State**

Section number photos Page 2

---

- 0019 - 15 Charles Street, typical student suite common room view
- 0020 - 15 Charles Street, typical student suite, showing intact fire doors
- 0021 - 15 Charles Street, typical student suite, common room
- 0022 - 15 Charles Street, typical student suite bedroom, showing pervasive industrial character
- 0023 - 15 Charles Street, second floor dance studio
- 0024 - 219 Clinton Street, east elevation looking SW
- 0025 - 219 Clinton Street, east elevation

See continuation sheet

UNITED STATES DEPARTMENT OF THE INTERIOR  
NATIONAL PARK SERVICE

NATIONAL REGISTER OF HISTORIC PLACES  
EVALUATION/RETURN SHEET

REQUESTED ACTION: NOMINATION

PROPERTY NAME: AnSCO Company Charles Street Factory Buildings

MULTIPLE NAME: Industrial Resources of Broome County, New York MPS

STATE & COUNTY: NEW YORK, Broome

DATE RECEIVED: 7/06/12      DATE OF PENDING LIST: 7/31/12  
DATE OF 16TH DAY: 8/15/12      DATE OF 45TH DAY: 8/22/12  
DATE OF WEEKLY LIST:

REFERENCE NUMBER: 12000531

REASONS FOR REVIEW:

APPEAL: N    DATA PROBLEM: N    LANDSCAPE: N    LESS THAN 50 YEARS: N  
OTHER: N    PDIL: N    PERIOD: N    PROGRAM UNAPPROVED: N  
REQUEST: Y    SAMPLE: N    SLR DRAFT: N    NATIONAL: N

COMMENT WAIVER: N

ACCEPT     RETURN     REJECT    8/22/12 DATE

ABSTRACT/SUMMARY COMMENTS:

RECOM./CRITERIA ARC  
REVIEWER aburnally      DISCIPLINE \_\_\_\_\_  
TELEPHONE \_\_\_\_\_      DATE \_\_\_\_\_

DOCUMENTATION see attached comments Y/N see attached SLR Y/N

If a nomination is returned to the nominating authority, the nomination is no longer under consideration by the NPS.



Ansco Company Charles Street Factory  
Buildings  
Broome County NY  
0001

**ANSCO COMPANY CHARLES STREET  
FACTORY BUILDINGS**

Binghamton, NY

Broome County

Photo 1

NY\_BroomeCounty\_AnscoCompanyCharlesStree  
tFactoryBuildings\_0001.tif



10

11

AnSCO Company Charles Street  
Factory Bldgs  
Broome Co NY  
0002

BROWN: - east\_facade.tif

**ANSCO COMPANY CHARLES STREET  
FACTORY BUILDINGS**

Binghamton, NY

Broome County

Photo 2

NY\_BroomeCounty\_AnSCOCompanyCharlesStree  
tFactoryBuildings\_0002.tif



Ansco Company Charles Street  
Factory Building  
Broome Co NY  
0003

brown: Charles\_exterior\_look!na\_NW.tif

**ANSCO COMPANY CHARLES STREET  
FACTORY BUILDINGS**

Binghamton, NY

Broome County

Photo 3

NY\_BroomeCounty\_AnscoCompanyCharlesStree  
tFactoryBuildings\_0003.tif



Anseo Company Charles Street  
Factory Buildings  
Broome Co NY  
0004

external view.tif

**ANSCO COMPANY CHARLES STREET  
FACTORY BUILDINGS**

Binghamton, NY

Broome County

Photo 4

NY\_BroomeCounty\_AnseoCompanyCharlesStreet  
FactoryBuildings\_0004.tif



AnSCO Company Charles Street  
Factory Buildings  
Broome Co NY  
0005

external\_look\_ina\_SE.tif

**ANSCO COMPANY CHARLES STREET  
FACTORY BUILDINGS**

Binghamton, NY

Broome County

Photo 5

NY\_BroomeCounty\_AnSCOCompanyCharlesStree  
tFactoryBuildings\_0005.tif



Anseo Company Charles  
Sheet Factory Buildings  
Broome Co NY  
0006

Broome: 12 Charles - Reception.tif

**ANSCO COMPANY CHARLES STREET  
FACTORY BUILDINGS**

Binghamton, NY

Broome County

Photo 6

NY\_BroomeCounty\_AnseoCompanyCharlesStree  
tFactoryBuildings\_0006.tif

Southern Tier  
Physical Therapy  
Associates



RECEPTION

AnSCO Company Charles  
Street Factory Bldg  
Broome Co NY  
0007

17 Charles Street - 2nd Floor - 414

Broome

**ANSCO COMPANY CHARLES STREET  
FACTORY BUILDINGS**

Binghamton, NY

Broome County

Photo 7

NY\_BroomeCounty\_AnSCOCompanyCharlesStree  
tFactoryBuildings\_0007.tif



Brown: entry\_lobby.tif

**ANSCO COMPANY CHARLES STREET  
FACTORY BUILDINGS**

Binghamton, NY

Broome County

Photo 8

NY\_BroomeCounty\_AnscoCompanyCharlesStree

tFactoryBuildings\_0008.tif

Anseo Company  
Charles Street  
Factory Bldgs  
Broome Co NY  
0008



AnSCO Company Charles Street  
Factory Bldg  
Broome Co NY  
0009

**ANSCO COMPANY CHARLES STREET  
FACTORY BUILDINGS**

Binghamton, NY

Broome County

Photo 9

NY\_BroomeCounty\_AnSCOCompanyCharlesStree  
tFactoryBuildings\_0009.tif



AnSCO Company Charles  
Street Factory Bldgs  
Broome Co NY  
0010

Basement.tif

**ANSCO COMPANY CHARLES STREET  
FACTORY BUILDINGS**

Binghamton, NY

Broome County

Photo 10

NY\_BroomeCounty\_AnSCOCompanyCharlesStree  
tFactoryBuildings\_0010.tif



Anseo Company Charles Street  
Factory Bldg  
Broome Co. NY  
0011

4 12 14 15 16 17 18 19 20 21 22 23 24 25 26 27 28 29 30 31 32 33 34 35 36 37 38 39 40 41 42 43 44 45 46 47 48 49 50 51 52 53 54 55 56 57 58 59 60 61 62 63 64 65 66 67 68 69 70 71 72 73 74 75 76 77 78 79 80 81 82 83 84 85 86 87 88 89 90 91 92 93 94 95 96 97 98 99 100

**ANSCO COMPANY CHARLES STREET  
FACTORY BUILDINGS**

Binghamton, NY

Broome County

Photo 11

NY\_BroomeCounty\_AnseoCompanyCharlesStree

tFactoryBuildings\_0011.tif



brown: 1st...f1...detail.tif

Ansco Company  
Charles Street  
Factory Bldg  
Broome Co NY  
0612

**ANSCO COMPANY CHARLES STREET  
FACTORY BUILDINGS**

Binghamton, NY

Broome County

Photo 12

NY\_BroomeCounty\_AnscoCompanyCharlesStree

fFactoryBuildings\_0012.tif



AnSCO Company Charles Street  
Factory Bldg  
Broome Co NY  
0013

PRINTED ON RECYCLED PAPER

**ANSCO COMPANY CHARLES STREET  
FACTORY BUILDINGS**

Binghamton, NY

Broome County

Photo 13

NY\_BroomeCounty\_AnSCOCompanyCharlesStree

tFactoryBuildings\_0013.tif



**FLI**

Finger Laxes Instr

[www.flicam.com](http://www.flicam.com)

Engineering

because your imo

Ansco Company Charles  
Sheet Factory Bldg  
Broome Co NY  
0014

BROWN:

FLI\_SPACE.tif

**ANSCO COMPANY CHARLES STREET  
FACTORY BUILDINGS**

Binghamton, NY

Broome County

Photo 14

NY\_BroomeCounty\_AnscoCompanyCharlesStree  
tFactoryBuildings\_0014.tif



Anseo Company Charles  
Street Factory Bldg  
Broome Co NY

0015

Brown: studio-reception-list-for.tif

**ANSCO COMPANY CHARLES STREET  
FACTORY BUILDINGS**

Binghamton, NY  
Broome County  
Photo 15

NY\_BroomeCounty\_AnseoCompanyCharlesStree  
tFactoryBuildings\_0015.tif



Brown: typical\_stair.tif

**ANSCO COMPANY CHARLES STREET  
FACTORY BUILDINGS**

Binghamton, NY

Broome County

Photo 16

NY\_BroomeCounty\_AnscoCompanyCharlesStree

tFactoryBuildings\_0016.tif

Ansco Company  
Charles Street  
Factory Bldgs  
Broome Co NY  
0016



Anso Company Charles  
Street Factory Bldg  
Broome Co NY  
0017

Broome County Historical Society  
100 North Main Street  
Binghamton, NY 13902

**ANSCO COMPANY CHARLES STREET  
FACTORY BUILDINGS**

Binghamton, NY

Broome County

Photo 17

NY\_BroomeCounty\_AnsoCompanyCharlesStree  
tFactoryBuildings\_0017.tif



AnSCO Company Charles  
Street Factory Bldg  
Broome Co NY  
0018

From: 2nd Floor Elevators.tif

**ANSCO COMPANY CHARLES STREET  
FACTORY BUILDINGS**

Binghamton, NY

Broome County

Photo 18

NY\_BroomeCounty\_AnSCOCompanyCharlesStree

tFactoryBuildings\_0018.tif



Ansco Company Charles  
Street Factory Bldg  
Broome Co NY  
0019

broome: tFactoryBuildings\_0019.tif

**ANSCO COMPANY CHARLES STREET  
FACTORY BUILDINGS**

Binghamton, NY

Broome County

Photo 19

NY\_BroomeCounty\_AnscoCompanyCharlesStree  
tFactoryBuildings\_0019.tif



Anseo Company Charles  
Street Factory Bldg  
Broome Co NY  
0020

Broome County, NY  
Suite Common Room.tif

**ANSCO COMPANY CHARLES STREET  
FACTORY BUILDINGS**

Binghamton, NY  
Broome County  
Photo 20

NY\_BroomeCounty\_AnscoCompanyCharlesStree  
tFactoryBuildings\_0020.tif



AnSCO Company Charles Street  
Factory Bldgs  
Broome Co NY  
0021

**ANSCO COMPANY CHARLES STREET  
FACTORY BUILDINGS**

Binghamton, NY

Broome County

Photo 21

NY\_BroomeCounty\_AnSCOCompanyCharlesStree  
tFactoryBuildings\_0021.tif



Anseo Company  
Charles Street Factory  
Bldg  
Broome Co NY  
0022

broome: tftp://sui.telnetroom copy.tif

**ANSCO COMPANY CHARLES STREET  
FACTORY BUILDINGS**

Binghamton, NY

Broome County

Photo 22

NY\_BroomeCounty\_AnseoCompanyCharlesStree  
tFactoryBuildings\_0022.tif



AnSCO Company Charles  
Street Factory Bldg  
Broome Co NY  
0023

2nd fl dance studio.tif

**ANSCO COMPANY CHARLES STREET  
FACTORY BUILDINGS**

Binghamton, NY

Broome County

Photo 23

NY\_BroomeCounty\_AnSCOCompanyCharlesStree  
tFactoryBuildings\_0023.tif



ALL SPEC  
FINISHING  
LINTON STREET

ALL SPEC FINISHING  
LINTON STREET  
PHOTOGRAPHY

Ansco Company Charles  
Street Factory Bldg  
Broome Co. NY

0024

219-011ntonl-east-elevation.tif

**ANSCO COMPANY CHARLES STREET  
FACTORY BUILDINGS**

Binghamton, NY

Broome County

Photo 24

NY\_BroomeCounty\_AnscoCompanyCharlesStree

tFactoryBuildings\_0024.tif



ALLSPEC FINISHING INC.  
8071 770-0174

Anseo Company Charles  
Street Factory Bldg  
Broome Co NY  
0025

219-Charles-exterior.tif

**ANSCO COMPANY CHARLES STREET  
FACTORY BUILDINGS**

Binghamton, NY

Broome County

Photo 25

NY\_BroomeCounty\_AnscoCompanyCharlesStree  
tFactoryBuildings\_0025.tif

**Anso Company Charles Street Factory Buildings**  
City of Binghamton, Broome County, NY

15 & 17 Charles St. & 219 Clinton St.  
Binghamton, NY 13905

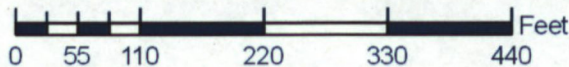


4662100

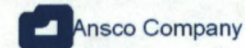
4662100



422900  
1:2,000  
1 inch = 167 feet  
Datum: NAD 1983 UTM Zone 18N



423200

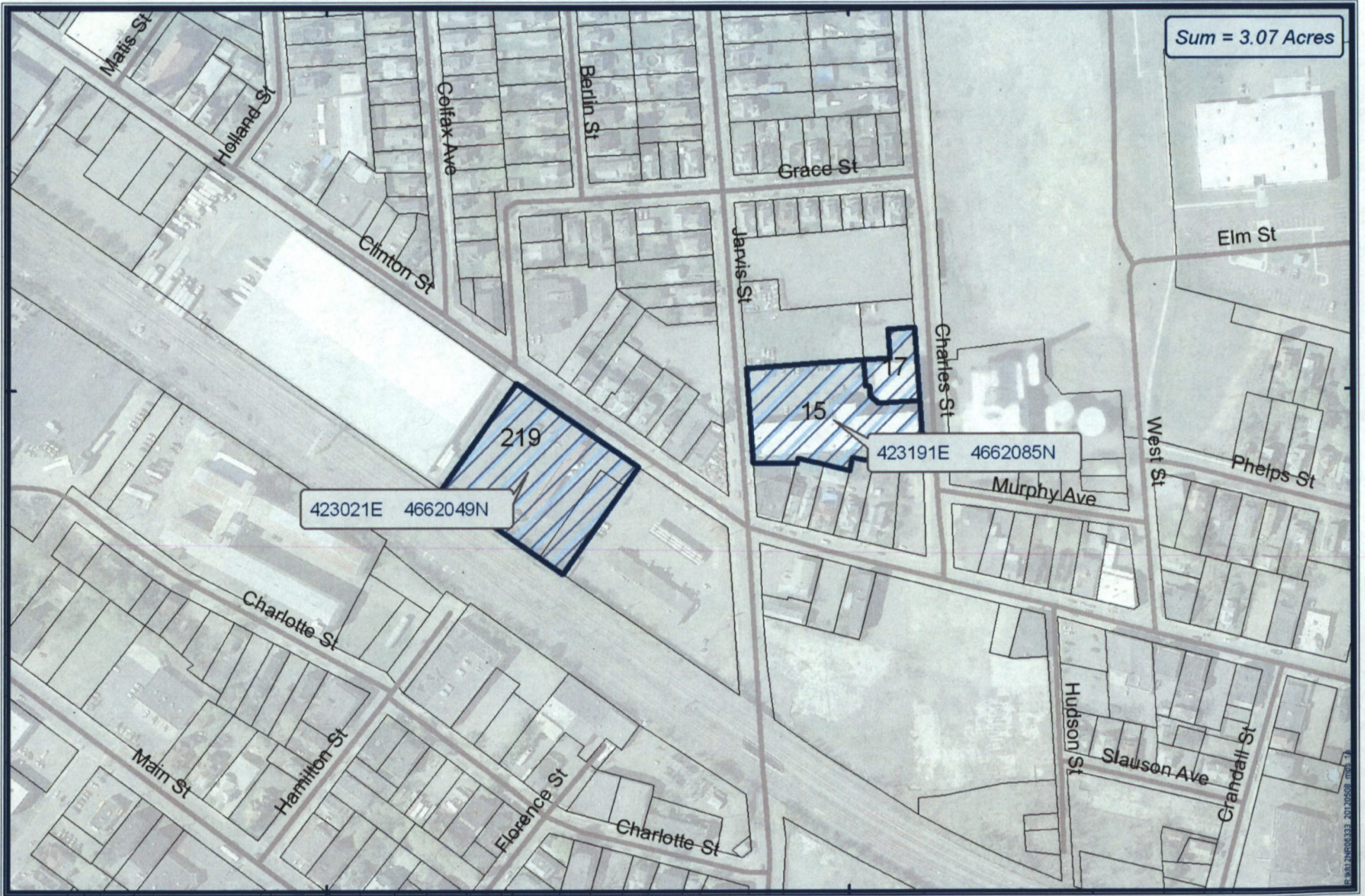


Othoimagery courtesy of:  
NYS DHSES  
<http://www.orthos.dhSES.ny.gov/>



**AnSCO Company Charles Street Factory Buildings**  
City of Binghamton, Broome County, NY

15 & 17 Charles St. & 219 Clinton St.  
Binghamton, NY 13905



4662100

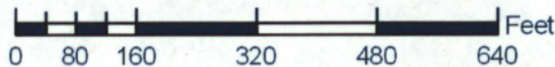
4662100




1:3,000  
1 inch = 250 feet

Datum: NAD 1983 UTM Zone 18N

422900



423200

 AnSCO Company

Tax Parcel Data Courtesy of:  
Broome Co. RPS  
<http://broomegis.co.broome.ny.us/website>



AnSCO Company Charles Street Factory Buildings  
City of Binghamton, Broome County, NY

15 & 17 Charles St. & 219 Clinton St.  
Binghamton, NY 13905

4663000

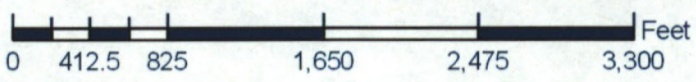
4663000

4662000

4662000

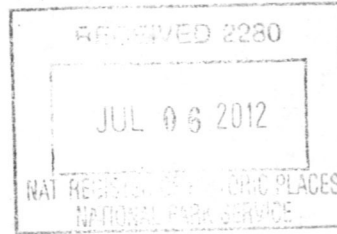


422000  
1:12,000  
1 inch = 1,000 feet  
Datum: NAD 1983 UTM Zone 18N



USGS Topo Quadrangle from:  
Services@arcgisonline.com





**Andrew M. Cuomo**  
Governor

**Rose Harvey**  
Commissioner

**New York State Office of Parks,  
Recreation and Historic Preservation**

Historic Preservation Field Services Bureau • Peebles Island, PO Box 189, Waterford, New York 12188-0189

518-237-8643

www.nysparks.com

29 June 2012

Alexis Abernathy  
National Park Service  
National Register of Historic Places  
1201 Eye St. NW, 8<sup>th</sup> Floor  
Washington, D.C. 20005

---

Re: National Register Nominations

Dear Ms. Abernathy:

I am pleased to enclose the following National Register nominations to be considered for listing by the Keeper of the National Register:

Industrial Resources of Broome County New York MPDF  
Anso Company Charles Street Factory Buildings, Broome County  
General Cigar Factory-Anso Camera Factory Building, Broome County  
Hartsdale Pet Cemetery, Westchester County

Thank you for your assistance in processing these proposals. Please feel free to call me at 518.237.8643 x 3261 if you have any questions.

Sincerely:

Kathleen LaFrank  
National Register Coordinator  
New York State Historic Preservation Office