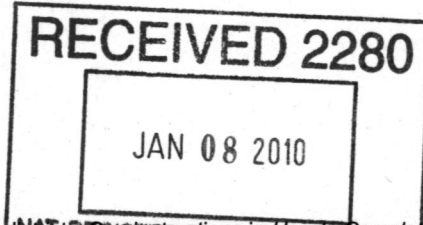


United States Department of the Interior  
National Park Service

National Register of Historic Places  
Registration Form

024



This form is for use in nominating or requesting determinations for individual properties and districts. See instructions in How to Complete the National Register of Historic Places Registration Form (National Register Bulletin 16A). Complete each item by marking  in the appropriate box or by entering the information requested. If an item does not apply to the property being documented, enter "N/A" for "not applicable." For functions, architectural classification, materials, and areas of significance, enter only categories and subcategories from the instructions. Place additional entries and narrative items on continuation sheets (NPS Form 10-900a). Use a typewriter, word processor, or computer, to complete all items.

1. Name of Property

historic name Brand, John, Jr., House

other name/site number Parkside Apartments

2. Location

street & number 351 Maple Ave  not for publication

city or town Elmira  vicinity

state New York code NY county Chemung code 015 zip code 14904

3. State/Federal Agency Certification

As the designated authority under the National Historic Preservation Act, as amended, I hereby certify that this  nomination  request for determination of eligibility meets the documentation standards for registering properties in the National Register of Historic Places and meets the procedural and professional requirements set forth in 36 CFR Part 60. In my opinion, the property  meets  does not meet the National Register criteria. I recommend that this property be considered significant  nationally  statewide  locally. ( See continuation sheet for additional comments.)

Rudolph Paupton DSHPO

1/4/10

Signature of certifying official/Title

Date

New York State Office of Parks, Recreation and Historic Preservation  
State or Federal agency and bureau

In my opinion, the property  meets  does not meet the National Register criteria. ( See continuation sheet for additional comments.)

Signature of certifying official/Title

Date

State or Federal agency and bureau

4. National Park Service Certification

I hereby certify that the property is:

- entered in the National Register.
  - See continuation sheet.
- determined eligible for the National Register
  - See continuation sheet.
- determined not eligible for the National Register.
- removed from the National Register.
- other, (explain:)

Signature of the Keeper

Date of Action

[Signature]

2/22/10

**5. Classification**

**Ownership of Property**  
(check as many boxes as apply)

**Category of Property**  
(check only one box)

**Number of Resources within Property**  
(Do not include previously listed resources in the count.)

- public-local
- private
- public-State
- public-Federal

- district
- building(s)
- site
- structure
- object

Contributing	Noncontributing	
1		buildings
		sites
		structures
		objects
1		Total

**Name of related multiple property listing**  
(Enter "N/A" if property is not part of a multiple property listing.)

**Number of contributing resources previously listed in the National Register**

N/A

0

**6. Function or Use**

**Historic Function**  
(Enter categories from instructions)

**Current Function**  
(Enter categories from instructions)

DOMESTIC/ single dwelling  
\_\_\_\_\_  
\_\_\_\_\_  
\_\_\_\_\_  
\_\_\_\_\_  
\_\_\_\_\_  
\_\_\_\_\_  
\_\_\_\_\_

DOMESTIC/ multipledwelling  
\_\_\_\_\_  
\_\_\_\_\_  
\_\_\_\_\_  
\_\_\_\_\_  
\_\_\_\_\_  
\_\_\_\_\_  
\_\_\_\_\_

**7. Description**

**Architectural Classification**  
(Enter categories from instructions)

**Materials**  
(Enter categories from instructions)

Queen Anne  
\_\_\_\_\_  
\_\_\_\_\_  
\_\_\_\_\_

foundation stone

walls brick

roof asphalt, metal

other \_\_\_\_\_

**Narrative Description**

(Describe the historic and current condition of the property on one or more continuation sheets.)

Brand, John, Jr., House  
Chemung County, New York

**NATIONAL REGISTER OF HISTORIC PLACES  
CONTINUATION SHEET**

Section number 7 Page 1

The Brand house is located on a 0.82-acre lot at 351 Maple Avenue in the City of Elmira, Chemung County, New York. The surrounding area is predominantly residential in character with medium to large-scale houses set on medium and large grassed lawns with large mature specimen trees. To the immediate northwest is Brand Park; diagonally across Maple Avenue to the northwest, the area is dominated by a mix of small-scale commercial, industrial, and residential properties.

The Brand house is a large-scale two and one-half-story Queen Anne style residence that faces Maple Avenue to the west and Catherine Street to the north, beyond which is Brand Park. The building is essentially rectangular, set on an east-west axis, with octagonal engaged towers at the northwest and southwest corners and is topped by gambrel-form cross gables. The towers, which flank the principal entrance facing Maple Avenue, terminate in conical roofs.

The basement and first floor of the building are constructed of random ashlar rock-faced granite, while the wood-frame upper stories are sheathed with scalloped wood shakes. Entrance porches, which are remnants of the original wrap-around veranda, composed of rock-faced random-ashlar granite piers that support clustered Tuscan porch posts that in turn support gabled pedimented roofs embellished with foliate carved decoration. Fenestration is generally regular, with window openings occurring singly or in pairs and fitted with one-over-one double-hung sash; the building also features large-scale Palladian windows in the west attic gable and on the south elevation at the landing of the main stairway. Other decorative window elements include a horizontally oriented oval and a stepped line of rectangular windows below the north gambrel gable [Figure 1]

The interior of the building is organized around a central longitudinal passage with a perpendicular secondary stair hall to the south of this, roughly one-third of the distance from the front (west) elevation and the rear. The two-flight main stair features elaborate varnished oak elements including turned balusters, applied carved ornament and a large open-sided plinth element that appears to be intended for use as a display case; the broad landing is lit by a large Palladian window with foliate-pattern leaded stained glass in orange and yellow hues above a broad window seat. [Figures 3-5] A secondary stair is located in the rear, original service area of the building.

Interior finishes are composed of plaster walls with elaborate Colonial Revival style varnished woodwork executed in oak. Doorways are trimmed with reeded architrave surrounds; in many of the rooms with wood ceiling cornice, the surrounds are surmounted by high cornices that are embellished with a foliate carved applied ornament. [Figures 6 and 7] Fireplaces in the house vary in decorative treatment, but all have mirrored overmantels and elaborate tile hearths and firebox surrounds. The surrounds are further embellished with large figural bas-relief plaques glazed in colors that match or complement the surrounding field tiles. Two examples are illustrated in Figures 8 & 9. The principal hall, stair hall and original dining room are all furnished with a boldly paneled wainscot below a chair rail. [Figures 2, 3 and 5]

Landscaping consists of open lawns punctuated by large maple trees and foundation and accent plantings of deciduous shrubs.

Brand, John, Jr., House  
Chemung County, New York

**NATIONAL REGISTER OF HISTORIC PLACES  
CONTINUATION SHEET**

Section number 7 Page 2

---



**Figure 1**



**Figure 2**

Brand, John, Jr., House  
Chemung County, New York

**NATIONAL REGISTER OF HISTORIC PLACES  
CONTINUATION SHEET**

Section number 7 Page 3

---



Figure 3



Figure 4

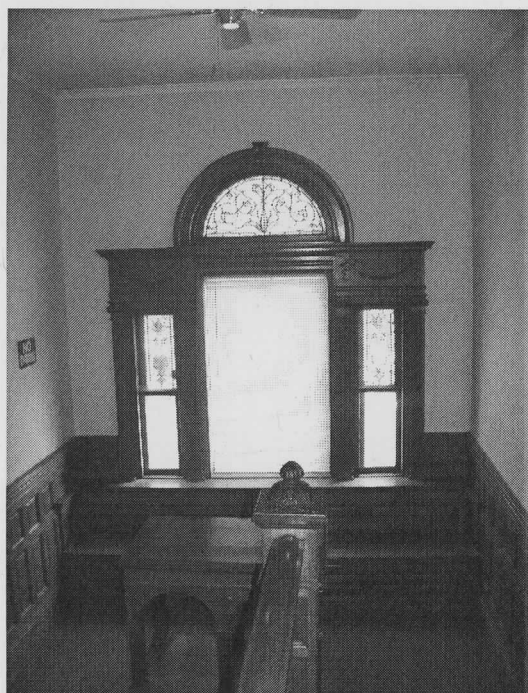


Figure 5

Brand, John, Jr., House  
Chemung County, New York

**NATIONAL REGISTER OF HISTORIC PLACES  
CONTINUATION SHEET**

Section number 7 Page 4

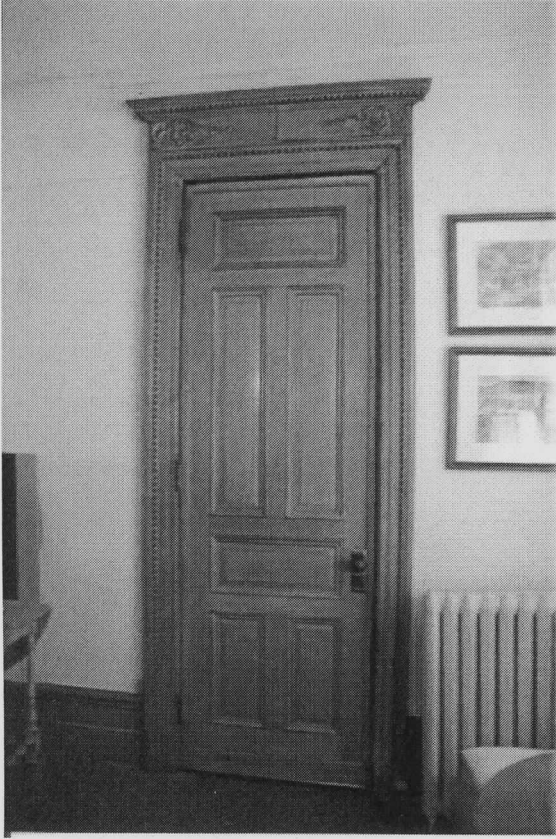


Figure 6



Figure 7



Figure 8



Figure 9

Brand, John, Jr., House  
Name of Property

Chemung County, New York  
County and State

## 8. Significance

### Applicable National Register Criteria

(Mark "x" in one or more boxes for the criteria qualifying the property for National Register listing.)

- A** Property is associated with events that have made a significant contribution to the broad patterns of our history.
- B** Property is associated with the lives of persons significant in our past.
- C** Property embodies the distinctive characteristics of a type, period, or method of construction or represents the work of a master, or possesses high artistic values, or represents a significant and distinguishable entity whose components lack individual distinction.
- D** Property has yielded, or is likely to yield, information important in prehistory or history.

### Criteria Considerations

(Mark "x" in all the boxes that apply.)

Property is:

- A** owned by a religious institution or used for religious purposes.
- B** removed from its original location.
- C** a birthplace or grave.
- D** a cemetery.
- E** a reconstructed building, object, or structure.
- F** a commemorative property.
- G** less than 50 years of age or achieved significance within the past 50 years.

### Narrative Statement of Significance

(Explain the significance of the property on one or more continuation sheets.)

## 9. Major Bibliographical References

### Bibliography

(Cite the books, articles, and other sources used in preparing this form on one or more continuation sheets.)

### Previous documentation on file (NPS):

- preliminary determination of individual listing (36 CFR 67) has been requested
- previously listed in the National Register
- previously determined eligible by the National Register
- designated a National Historic Landmark
- recorded by Historic American Buildings Survey # \_\_\_\_\_
- recorded by Historic American Engineering Record # \_\_\_\_\_

### Areas of Significance

(enter categories from instructions)

ARCHITECTURE

### Period of Significance

ca. 1890 - ca. 1930

### Significant Dates

### Significant Persons

(Complete if Criterion B is marked above)

N/A

### Cultural Affiliation

N/A

### Architect/Builder

Otis Dockstader and John Considine

### Primary location of additional data:

- State Historic Preservation Office
- Other State agency
- Federal agency
- Local government
- University
- Other Name of repository: \_\_\_\_\_

Brand, John, Jr., House  
Chemung County, New York

**NATIONAL REGISTER OF HISTORIC PLACES  
CONTINUATION SHEET**

Section number 8 Page 1

The John Brand, Jr. House is significant under Criterion C as a distinguished and largely intact representative example of a large-scale Queen Anne/Shingle style residence in the City of Elmira, New York. Constructed ca. 1890, the house combines Queen Anne massing and fenestration with sheathing and decorative elements associated with the Shingle style and the early Colonial Revival. The building displays a high level of craftsmanship in its use of high-quality period materials, i.e. cut stone, patterned and shaped shingles and interior oak woodwork, leaded glass, and tile. Built from designs by local architects Otis Dockstader and John Considine, the house illustrates the prosperity of late nineteenth-century Elmira and the taste of its business leaders of that period.

European-American settlement of Elmira began around 1800; by the 1850s, the city had become a prosperous business, manufacturing and railroad center in the region, known as the "Queen City of the Southern Tier". The city experienced a major growth period from the 1850s through the end of the century due to its importance as a manufacturing, transportation and commercial center; its economy flourished during the Civil War as its manufacturers sold large quantities of goods to the federal government. Foundries, manufactories, glass plants and fabric and clothing mills were well serviced by several mainline railroads, including the Erie, the Pennsylvania and, after 1882, the Delaware, Lackawanna & Western, all of which had at least secondary yards, fueling and maintenance facilities in the city.

As in other northern areas, notably the Connecticut River valley and southern Ontario between Buffalo and Detroit, the Chemung River valley counted the production of "wrapper" tobacco among its important cash crops. These climates, with a high percentage of overcast days, encouraged certain strains of tobacco like the Connecticut Shade variety to produce large, thin, and relatively vein-free leaves prized for creating the outer wrappers of cigars. John Brand Jr. became wealthy as a wholesaler of leaf tobacco and by the late 1880s, he and his wife, the former Clara E. Woodruff, were able to build a stylish new house on one of the newly created lots on the former Sly/Robinson family farmlands along Maple Avenue. The land was purchased from Emma A. Robinson, a descendent of the Sly family. Many of the streets around this area were named for members of the Sly family: Catherine Street (Catherine Sly), Spaulding Street (Kate S. Spaulding), Robinson Street (David C. Robinson -Mayor of Elmira), and Baldwin Street (John S. Baldwin). In addition to his business, Brand was active in community affairs as a member of the Newtown Battlefield Commission, member of the Parks Commission and an Alderman representing the 8th Ward in the 1880s. In 1924, John Brand, Jr. donated the south wing of the Home for the Aged on Central Avenue (Lindenwald Haus) in memory of his mother, Margaret Brand. Brand Park, immediately north of his residence, was named in his honor.

The house was designed by Otis Dockstader and John Considine<sup>1</sup>, which likely narrows the date of the design to the period 1886-1889 when Considine was in training in the office of Pierce & Dockstader.<sup>2</sup> Despite his early association with Joseph Pierce, who in 1890 formed half of the prominent and well-documented Elmira architectural firm of Pierce & Bickford,

<sup>1</sup> Howell, Janet Heller, "Historic Maple Avenue/Elmira, New York/First 2 Blocks/1793-1999. Pamphlet. Elmira, NY: Harold & Winnie Watts, Margie Drake and Kerbein Printing, 1999.

<sup>2</sup> [freepages.genealogy.rootsweb.ancestry.com/~twintiers/sket6.html](http://freepages.genealogy.rootsweb.ancestry.com/~twintiers/sket6.html)

Brand, John, Jr., House  
Chemung County, New York

**NATIONAL REGISTER OF HISTORIC PLACES  
CONTINUATION SHEET**

Section number 8 Page 2

Dockstader and his overall career and oeuvre remain somewhat obscure.<sup>3</sup> Born in Tioga County Pennsylvania in 1851, Dockstader studied civil engineering at Cook Academy in Montour Falls before working as a draftsman in the offices of Warren Hayes, beginning in 1877. Before going into practice with Joseph Pierce in 1883, Dockstader worked designing bridges for the Delaware, Lackawanna & Western Railroad. Pierce and Dockstader ended their partnership in 1890; in 1893, Dockstader was ejected from the Elmira chapter of the American Institute of Architects for "unprofessional conduct", possibly at the instigation of Pierce and Pierce's new partner, Hiram Bickford.<sup>4</sup>

Considine was born in Watkins (Glen), Schuyler County, New York in 1867 and after various short-term jobs, entered the Pierce & Dockstader office in 1886, "with whom he studied architecture three years. Mr. Considine has designed work for Washington, D. C., and Albuquerque, N. M., besides many of the finest residences in Elmira. In 1889 he embarked in business by himself with an office at 326 East Water Street. He is a member of the B.P.O.E. of Elmira and thirtieth Separate Company National Guards. ... His work shows careful thought, skillful architectural knowledge; and thorough application of the best modern principles in his profession. He has been eminently successful."<sup>5</sup>

The Brand House reflects the skillful hand of its designers in its successful intermingling of several related strains of residential design of the 1880s and '90s, i.e. the Queen Anne, Shingle and Colonial Revival styles. The building's overall massing is in the Queen Anne mold, with its rock-faced granite first story and massive engaged octagonal towers with conical roofs as well as the picturesque use of a polygonal projected north bay a diagonal band of small windows below one of the rooflines. The upper floors of the exterior reflect the Shingle Style in the use of shake siding that follows the line of curved elements where they occur and in the use of large gambrel dormers. Exterior and interior detailing draws from the eclectic mixture of Queen Anne forms and motifs and generically neoclassical Colonial/Georgian Revival found in Shingle and later Queen Anne design. Decorative elements include foliate cornice and pediment ornament, varnished hardwood woodwork that combines late Victorian scale and form with freely interpreted neoclassical detailing and materials such as glazed tile, and stained and leaded glass accent panels in several windows. In the Brand House, these materials are used lavishly throughout the principal spaces on the first and second floors.

The Brand House survives an important example of large-scale eclectic Queen Anne style domestic architecture in Elmira and a reflection of the city's late-nineteenth century prosperity and sophistication and an example of two of Elmira's many leading architects of the period.

---

<sup>3</sup> Among Dockstader's works that have recently come to light are the Presbyterian Church of Atlanta, Atlanta, NY [NR proposed as of this writing], the Friendship Free Library, Friendship, NY [NR: 2008] and a nearly identical library in Lancaster, NY, the St. Ann's Federation Building in Hornell, NY [NR: 2001], as well as several residences in Elmira's Near Westside Historic District [NR: 1983]

<sup>4</sup> Reed, Roger, *Architects of Standing...*, pg 33.

<sup>5</sup> [freepages.genealogy.rootsweb.ancestry.com/~twintiers/sket6.html](http://freepages.genealogy.rootsweb.ancestry.com/~twintiers/sket6.html)

Brand, John, Jr., House  
Chemung County, New York

**NATIONAL REGISTER OF HISTORIC PLACES  
CONTINUATION SHEET**

Section number 9 Page 1

---

-----, [freepages.genealogy.rootsweb.ancestry.com/~twintiers/sket6.html](http://freepages.genealogy.rootsweb.ancestry.com/~twintiers/sket6.html)

Englert, Robert T., National Register form, *Erste Deutsche Evangelische Kirche, Elmira, Chemung County*, 2007.

Englert, Robert T., National Register form, *Trinity Church, Elmira, Chemung County* 2007.

Howell, Janet Heller, "Historic Maple Avenue/Elmira, New York/First 2 Blocks/1793-1999. Pamphlet. Elmira, NY: Harold & Winnie Watts, Margie Drake and Kerbein Printing, 1999.

Towner, Ausburn, *Our county and its people : a history of the valley and county of Chemung from the closing years of the eighteenth century*, Syracuse, N.Y.: D. Mason, 1892.

Brand, John, Jr., House  
Name of Property

Chemung County, New York  
County and State

## 10. Geographical Data

Acreage of Property 0.82

### UTM References

(Place additional boundaries of the property on a continuation sheet.)

1 18 351320 4660590  
Zone Easting Northing

2 18  
Zone Easting Northing

3 18  
Zone Easting Northing

4 18  
Zone Easting Northing

See continuation sheet

### Verbal Boundary Description

(Describe the boundaries of the property on a continuation sheet.)

### Boundary Justification

(Explain why the boundaries were selected on a continuation sheet.)

## 11. Form Prepared By

name/title Robert T. Englert, Historic Preservation Program Analyst  
organization NYS Office of Parks, Recreation & Historic Preservation date September 2009  
street & number PO Box 189 telephone 518-237-8643  
city or town Waterford state NY zip code 12188-0189

### Additional Documentation

Submit the following items with the completed form:

#### Continuation Sheets

#### Maps

- A **USGS map** (7.5 or 15 minute series) indicating the property's location.
- A **Sketch map** for historic districts and properties having large acreage or numerous resources.

#### Photographs

Representative black and **white photographs** of the property.

#### Additional items

(Check with the SHPO or FPO for any additional items)

### Property Owner

(Complete this item at the request of SHPO or FPO.)

name/title Harold & Winnie Watts  
street & number 352 Maple Ave telephone \_\_\_\_\_  
city or town Elmira state NY zip code 14904

**Paperwork Reduction Act Statement:** This information is being collected for applications to the National Register of Historic Places to nominate properties for listing or determine eligibility for listing, to list properties, and to amend existing listings. Response to this request is required to obtain a benefit in accordance with the National Historic Preservation Act, as amended (16 U.S.C. 470 *et seq.*).

**Estimated Burden Statement:** Public reporting burden for this form is estimated to average 18.1 hours per response including time for reviewing instructions, gathering and maintaining data, and completing and reviewing the form. Direct comments regarding this burden estimate or any aspect of this form to the Chief, Administrative Services Division, National Park Service, P.O. Box 37127, Washington, DC 20013-7127; and the Office of Management and Budget, Paperwork Reductions Projects (1024-0018), Washington, DC 20503.

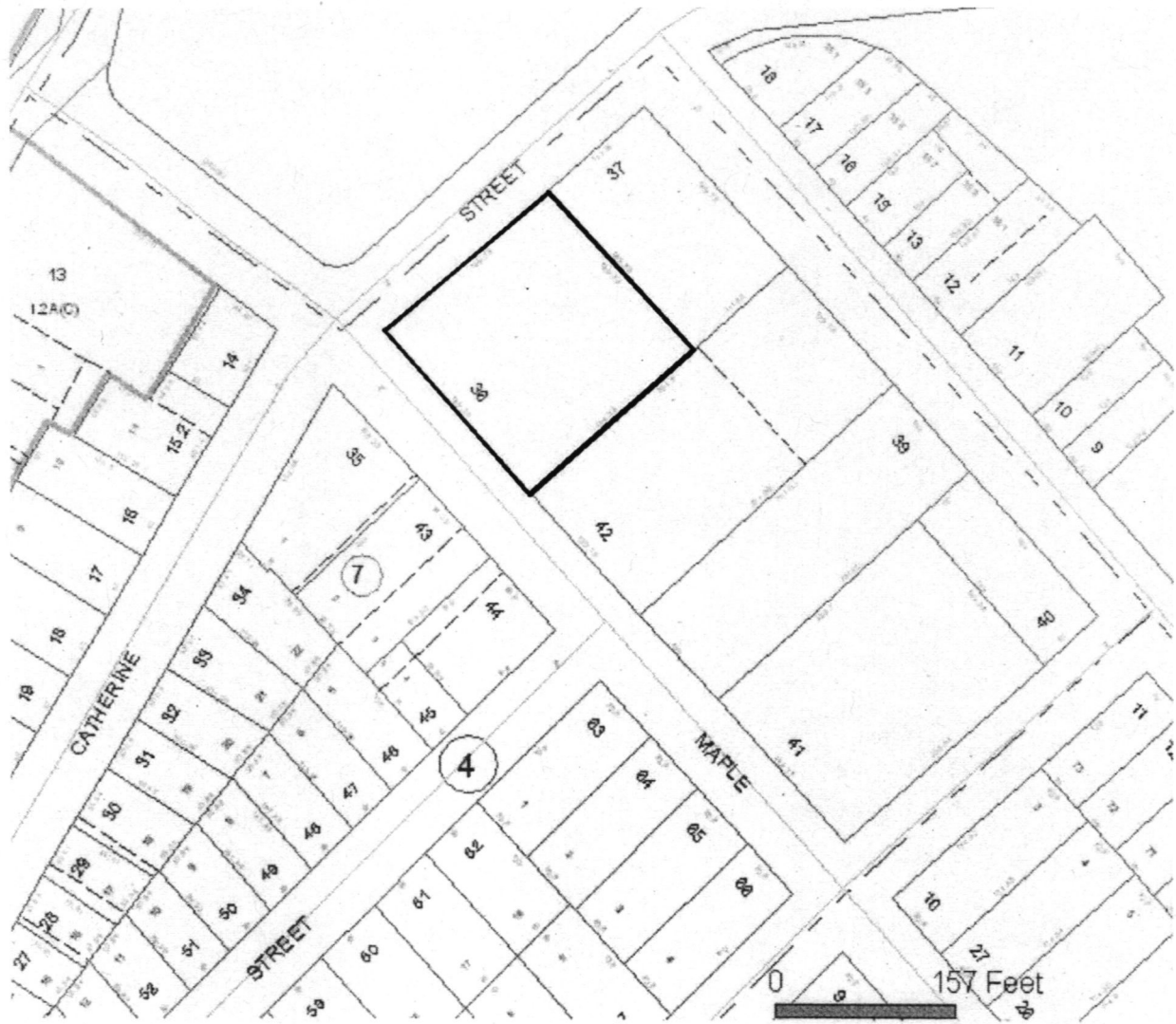
Brand, John, Jr., House  
Chemung County, New York

**NATIONAL REGISTER OF HISTORIC PLACES  
CONTINUATION SHEET**

Section number 10 Page 1

**Boundary Description:**

The nominated property is a square city lot of 0.82 acres, as depicted by the heavy black line on the attached section of the City of Elmira tax map.



North ↑

**Boundary Justification:**

The nomination boundary represents the parcel that is associated with the John Brand, Jr. House.

Brand, John, Jr., House  
Chemung County, New York

**NATIONAL REGISTER OF HISTORIC PLACES  
CONTINUATION SHEET**

Section number Photos Page 1

---

Photographs

Photographer: Robert Englert  
Historic Preservation Field Services Bureau  
Peebles Island  
PO Box 189  
Waterford, NY 12188-0189

Date: June 9, 2009

Tiff Files: CD-R of .tiff files on file at  
National Park Service  
Washington, DC

Historic Preservation Field Services Bureau  
Peebles Island  
PO Box 189  
Waterford, NY 12188-0189

NY\_ Co\_

1. Exterior, View to SE
2. Exterior, View to E
3. Interior, Main Stair, View to SSW
4. Interior, Main Stair landing and Palladian window, View to S
5. Interior, Typical woodwork, View to E





BRAND, JOHN, JR., HOASE

CHEMUNG CO., NY

1 of 5



BRAND, JOHN, JR., HOUSE

CHEMUNG W., NY

2 of 5



BRAND, JOHN, JR., HOUSE

CHEMUNG CO., NY

3 of 5



BRAND, JOHN, JR., HOUSE

CHEMUNG CO., NY

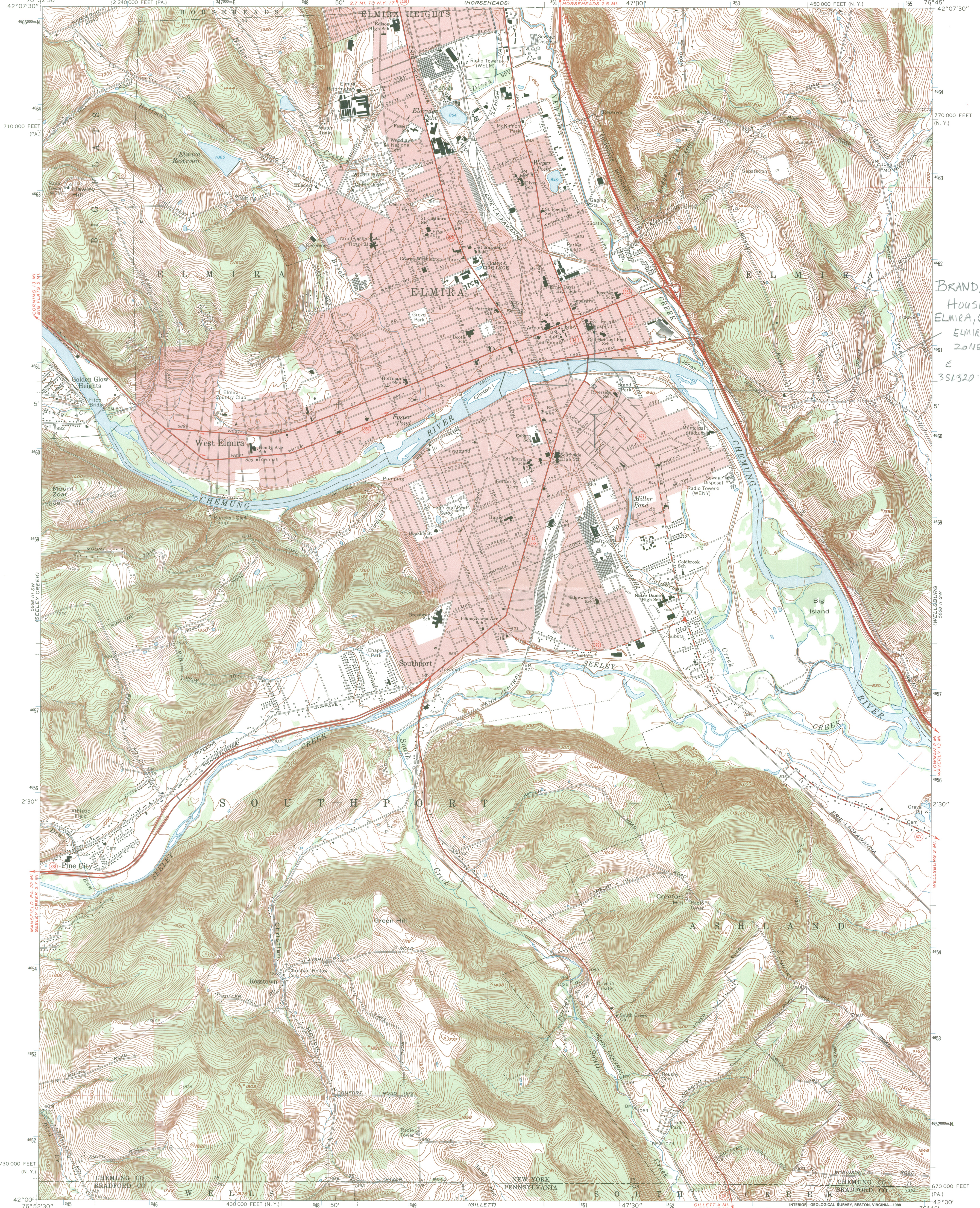
4 of 5



BRAND, JOHN, JR., HOUSE

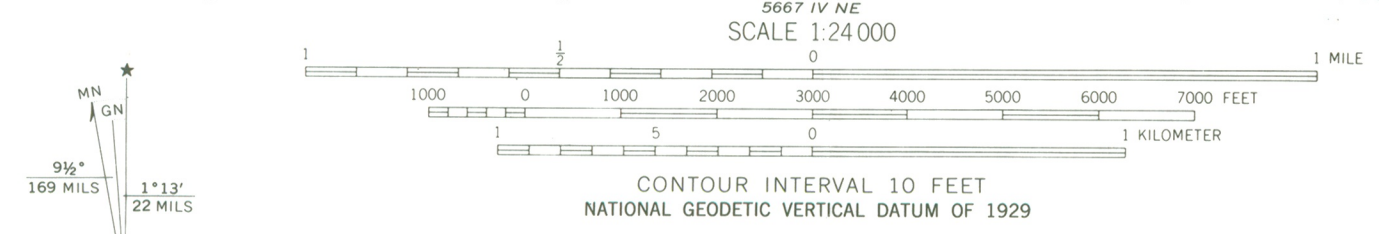
CHEMUNG CO., NY

5 of 5



BRAND, JOHN, JR.,  
HOUSE  
ELMIRA, CHEMUNG CO, NY  
ELMIRA QUAD  
ZONE 18  
E N  
351320 4660590

Mapped, edited, and published by the Geological Survey  
Revised in cooperation with New York Department of Transportation  
Control by USGS and USC&GS  
Topography by photogrammetric methods from aerial  
photographs taken 1948. Field checked 1953. Revised  
from aerial photographs taken 1968. Field checked 1969  
Polyconic projection. 1927 North American datum  
10,000-foot grids based on New York coordinate system,  
central zone, and Pennsylvania coordinate system, north zone  
1000-meter Universal Transverse Mercator grid ticks,  
zone 18, shown in blue  
Fine red dashed lines indicate selected fence and field lines where  
generally visible on aerial photographs. This information is unchecked  
Red tint indicates areas in which only landmark buildings are shown



ROAD CLASSIFICATION

Primary highway, all weather, hard surface	Light-duty road, all weather, improved surface
Secondary highway, all weather, hard surface	Unimproved road, fair or dry weather
	State Route



THIS MAP COMPLIES WITH NATIONAL MAP ACCURACY STANDARDS  
FOR SALE BY U.S. GEOLOGICAL SURVEY, DENVER, COLORADO 80225, OR RESTON, VIRGINIA 22092  
A FOLDER DESCRIBING TOPOGRAPHIC MAPS AND SYMBOLS IS AVAILABLE ON REQUEST

To place on the predicted North American Datum 1983,  
move the projection lines 4 meters south and  
26 meters west as shown by dashed corner ticks

ELMIRA, N. Y.—PA.  
SE/4 ELMIRA 15' QUADRANGLE  
42076-A7-TF-024

1969  
DMA 5668 III SE—SERIES V821



New York State Office of Parks,  
Recreation and Historic Preservation  
Historic Preservation Field Services Bureau  
Peebles Island  
P.O. Box 189  
Waterford, New York 12188-0189

Re: John Brand Jr. House  
351 Maple Avenue  
Elmira, New York  
Chemung County

Dear Sir or Madam;

The Elmira City Historic Preservation Commission, at its regular meeting held November 13, 2009 voted to endorse the nomination of the above named property to the State and National Register of Historic Places.

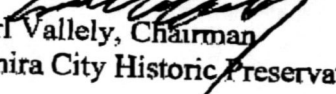
The structure is significant under Criterion C as a largely intact example of the Queen Anne/Shingle style of residential architecture that, while it is presently an example of adaptive reuse as a multiple residence, retains its exterior features and to the largest degree, interior details as well.

The house is located in a district of homes constructed at the close of the nineteenth century. This area is currently under a state funded survey and assessment as a potential nominee to the Register as a Historic District.

The Brand family, original owners and constructors of the residence played a significant role in the affairs of the community in the late nineteenth and early twentieth century. The adjacent public park and municipal swimming pool were named in honor of John Brand Jr.

The Commission feels that the John Brand Jr. House, both architecturally and historically meets the criterion for listing on the Register and that its inclusion will have significant benefit to the neighborhood, the City of Elmira and to New York.

Sincerely

  
Carl Vallely, Chairman  
Elmira City Historic Preservation Commission



## CITY OF ELMIRA NEW YORK

---

---

Office of the Mayor  
CITY HALL • 317 EAST CHURCH STREET • ELMIRA, NEW YORK 14901  
www.cityofelmira.net • jtonello@cityofelmira.net

**John S. Tonello**  
Mayor

Office: (607) 737-5644  
Fax: (607) 737-5824

December 6, 2009

Ruth L. Pierpont  
Director  
Division of Historic Preservation  
New York State Office of Parks, Recreation and Historic Preservation  
P.O. Box 189  
Waterford, New York 12188-0189

Dear Ms. Pierpont:

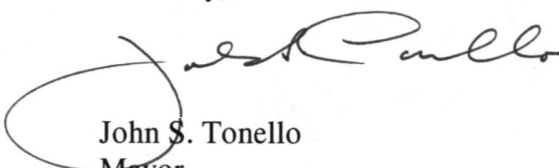
Please accept this letter as formal notification of the City of Elmira's support for the nomination of the **John Brand Jr. House (351 Maple Avenue)** to the State and National Registers of Historic Places.

At the city's Nov. 24 Historic Preservation Commission Meeting, the members unanimously approved resolutions recommending this property be included on the State and National Historic Registry. A separate report submitted by Chairman Carl Valley will detail the commission's recommendations.

The John Brand Jr. House is a particular fine example of Elmira's historic architecture. It also sits within a district that's currently being studied for broader historic preservation efforts. As mayor, it is my goal to see that important structures such as this one are preserved in ways that are consistent with Elmira's heritage.

If you have any questions, please feel free to contact me.

Sincerely,



**John S. Tonello**  
Mayor

Cc: Carl Valley

**RESOLUTION**

**NO. 09-11-02**

By Commissioner Humphries:  
Seconded by Commissioner Horton

WHEREAS, Mr. Harold Watts, property owner of 351 Maple Avenue, Elmira, New York, stated that he is in favor of the proposed nomination. Photographs of the property were submitted to the Commission. This has been a 13 unit apartment house since 1934. Mr. Watts has owned the property since 1977, and

WHEREAS, the commission agreed that this is a significant property in the community. The property is well maintained and close to its original integrity. Commissioner Butcher stated that he is concerned with the number of apartments in the property and the structure being a rental property, but he is in favor of the nomination, and

WHEREAS, a legal advertisement of this request, along with the date, time and location of this meeting was published in the Elmira Star Gazette on November 14, 2009. The property owner was contacted by certified mail as notification of this request, along with the date, time and location of this meeting, and

WHEREAS, with the exception of comments made by the applicant, there were no comments from the public regarding this request, and

NOW, THEREFORE, BE IT

RESOLVED, that the Elmira City Historic Preservation Commission has reviewed the request from the New York State Office of Parks, Recreation and Historic Preservation and that said Commission hereby recommends that the John Brand Jr. House located at 351 Maple Avenue, Elmira, New York be nominated to the State and National Registers of Historic Places as proposed on this date.

**ADOPTED BY THE FOLLOWING VOTE**

**AYES**

X COMMISSIONER HUMPHRIES  
X COMMISSIONER DELGROSSO  
X COMMISSIONER MCINERNY  
X COMMISSIONER BUTCHER  
X COMMISSIONER HORTON  
X CHAIRMAN VALLELY

**NAYS**

11/24/09

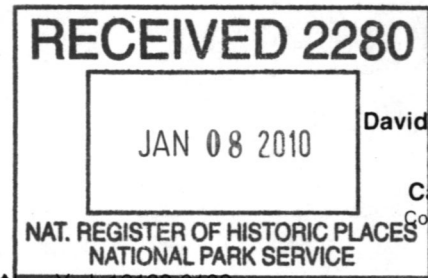


**New York State Office of Parks,  
Recreation and Historic Preservation**

Historic Preservation Field Services Bureau • Peebles Island, PO Box 189, Waterford, New York 12188-0189

518-237-8643

www.nysparks.com



David A. Paterson  
Governor

Carol Ash  
Commissioner

January 8, 2010

Ms. Alexis Abernathy  
National Park Service  
National Register of Historic Places  
1201 Eye St. NW  
8<sup>th</sup> Floor  
Washington, D.C. 20005

Re: Transmittal of National Register  
Nominations

Dear Ms. Abernathy:

I am pleased to transmit five new National Register nominations to be considered for listing by the Keeper of the National Register as follows:

William S. Gerity House, Elmira, Chemung Co., NY

Methodist Episcopal Church, Stony Creek, Warren Co., NY

John Brand, Jr. House, Elmira, Chemung Co., NY

Presbyterian Church of Atlanta, Steuben Co., NY

Vestal Central School, Vestal, Broome Co., NY

Thank you for your assistance in processing these proposals. Please feel free to call on me at 518-237-8643 ext. 3258 if any questions arise.

Sincerely,

Mark L. Peckham  
National Register  
Program Coordinator

enclosures