

919

National Register of Historic Places Registration Form

This form is for use in nominating or requesting determinations for individual properties and districts. See instructions in How to Complete the National Register of Historic Places Registration Form (National Register Bulletin 16A). Complete each item by marking "x" in the appropriate box or by entering the information requested. If an item does not apply to the property being documented, enter "N/A" for "not applicable." For functions, architectural classification, materials, and areas of significance, enter only categories and subcategories from the instructions. Place additional entries and narrative items on continuation sheets (NPS Form 10-900a). Use a typewriter, word processor, or computer to complete all items.

1. Name of Property

historic name Lowville Masonic Temple

other names/site number _____

2. Location

street & number 7552 South State Street

village Lowville [] vicinity

state New York code NY county Lewis code 049 zip code 13367

3. State/Federal Agency Certification

As the designated authority under the National Historic Preservation Act, as amended, I hereby certify that this [X] nomination [] request for determination of eligibility meets the documentation standards for registering properties in the National Register of Historic Places and meets the procedural and professional requirements as set forth in 36 CFR Part 60. in my opinion, the property [X] meets [] does not meet the National Register criteria. I recommend that this property be considered significant [] nationally [] statewide [X] locally. ([] see continuation sheet for additional comments.)

Russell Purpoint DPHPO

7/28/08

Signature of certifying official/Title : Deputy Commissioner for Historic Preservation

Date

New York State Office of Parks, Recreation & Historic Preservation

In my opinion, the property [] meets [] does not meet the National Register criteria. ([] see continuation sheet for additional comments.)

Signature of certifying official/Title

Date

State or Federal agency and bureau

4. National Park Service Certification

I hereby certify that the property is:

- entered in the National Register [] see continuation sheet
- determined eligible for the National Register [] see continuation sheet
- determined not eligible for the National Register
- removed from the National Register
- other (explain)

for

Signature of the Keeper

date of action

Colson D. Beall 9.19.08

**United States Department of the Interior
National Park Service**

National Register of Historic Places

**Lowville Masonic Temple
Lowville, Lewis County, New York**

Continuation Sheet

Section 7 Page 1

Description

The Lowville Masonic Temple, built in 1928-29, is a two-story, five-bay wide, Georgian Revival style building in the historic core of the village of Lowville. The rectangular, flat-roofed brick building with classically inspired, cast-stone trim is surrounded by a variety of nineteenth and early twentieth century commercial, civic and religious buildings that appear to meet the National Register criteria for listing as a district; however, further research is needed to assess the specific integrity and areas of significance of these adjacent buildings, both individually and collectively. The former Masonic Temple, now housing the Lewis County Historical Society, occupies most of its one-acre village lot, the terrain of which slopes sharply eastward toward Mill Creek, thereby fully exposing the basement level at its rear (east) elevation. The front of the building abuts the sidewalk that unifies this block of South State Street; similarities of materials, scale, set-back and cornice lines among the buildings provide a cohesive downtown streetscape. A parking lot flanks the building on the south and east (rear) sides; there are no outbuildings on the nominated property.

The building is roughly L-shaped, consisting of a main (front) block (oriented on a north-south axis) and a larger rear block, set back slightly on its south elevation, extending eastward from the rear of the main block. The overall dimensions of the building are 120' by 50'. The five-bay-wide, center-hall front (west) elevation of the main block is lavishly ornamented with Georgian-inspired cast-stone details. Of particular note are the paired, two-story, fluted pilasters that flank the main entrance, which is accentuated by a bracketed entablature supporting an elaborate, broken scroll pediment. (The historic, double-leaf door has been replaced by a modern steel door.) The slightly raised foundation is embellished with cast-stone blocks designed to resemble rusticated masonry; similarly, the cast-stone corner quoins convey a sense of real stone construction. The entire façade is spanned by a full, entablature embellished with dentils and modillions. Above the entablature is a parapet constructed of alternating panels of solid brick and cast stone, the latter of which feature high relief, balustrade-like ornamentation. The parapet is dominated by a centrally placed, flat-arched, cast-stone pediment (corresponding with the paired pilasters flanking the front entrance) that features an oval medallion with a bas-relief, Masonic symbol, i.e., the square and compass. Fenestration is symmetrical; large, rectangular second-story window openings contain their original 15/15 double-hung sash with simple, cast-stone trim. First-story window openings contain large, round-arched upper sash with radiating tracery and 10-paned lower sash. The openings are surmounted by brick lintels with cast-stone keystones. The areas below the windows feature decorative cast-stone panels fronted by wrought-iron balustrades.

**United States Department of the Interior
National Park Service**

National Register of Historic Places

**Lowville Masonic Temple
Lowville, Lewis County, New York**

Continuation Sheet

Section 7 Page 2

The south (side) and east (rear) elevations, both of which overlook parking lots, are extremely utilitarian in construction and character. Small, irregularly spaced metal casement and/or double-hung sash provide minimal light and ventilation on the upper stories of these elevations (particularly the Masons' public meeting hall). Large, multi-paned metal windows provide light and ventilation to the Masons' former dining hall in the fully exposed basement level of the large, rear wing.

The interior features of the building survive virtually intact, in terms of both room configuration and decorative fabric. The following discussion describes the interior spaces based on their original uses; current uses are also included. The main entrance opens onto a long hallway oriented on an east-west axis. The hallway was originally flanked on both sides by colonnades of fluted, Doric order columns that defined the smoking room in the northern half of the main block and the card room on the southern half of the main block. (The colonnade survives, but has been filled in with modern French doors to separate office space and display rooms for the historical society.) The former card room is distinguished by an intact, Georgian-inspired mantelpiece and simple cove molding. The east end of the hallway features a large, segmentally arched doorway that provides access to the stairwell behind the former card room and a regalia room and small office behind the former smoking room before opening onto the large, two-story meeting room. By far the grandest space in the building, the roughly rectangular meeting room is distinguished by bold, cove molding and elaborate, Georgian inspired woodwork. The front end of the room, accessed by two doors, contains a tri-partite, arcaded wall (articulate by fluted pilasters and bold, round-arched moldings) that once contained seating and furniture related to the leaders of the fraternal order; secondary seating, mostly pew-like benches, lined the side walls for members of the order. A large altar, the focal point of Masonic rituals, once stood at the center of the room. The rear (east) end of the meeting hall features a centrally placed stage flanked by fluted columns. Small, regularly placed, rectangular windows light the first story of the hall, above which runs a full, heavily molded, wood entablature. The upper-story of the hall contains a balcony at the west end.

The second story of the main block contains the Masons' former billiard room, which runs the full width of the front of the building. Behind (east of) the north half of the billiard room is the former Ladies' Sitting Room, which now serves as a storage area for the historical society. Behind (east of) the south half of the billiard room is the stairwell, a hallway, and a coatroom, through which access to the balcony is gained. All fabric is original, but is essentially vernacular in character and embellishment.

**United States Department of the Interior
National Park Service**

National Register of Historic Places

**Lowville Masonic Temple
Lowville, Lewis County, New York**

Continuation Sheet

Section 7 Page 3

The basement of the building originally contained a full bowling alley (mostly under the main block) and a large dining room (mostly under the Masons' meeting room.) When the historical society took over the building, the still-active Masons moved all of their furniture and accessories from the main meeting room into the former dining room. The historical society now occupies the former meeting room. Never formally decorated, the former dining room survives intact to its date of origin.

Lowville Masonic Temple
Lowville, Lewis County, New York

Statement of Significance

Applicable National Register Criteria

(Mark "x" in one or more boxes for the criteria qualifying the property for National Register listing.)

- A** Property associated with events that have made a significant contribution to the broad patterns of our history.
- B** Property is associated with the lives of persons
- C** Property embodies the distinctive characteristics of a type, period, or method of construction or represents the work of a master, or possesses high artistic values, or represents a significant and distinguishable entity whose components lack individual distinction.
- D** Property has yielded, or is likely to yield, information important in prehistory or history.

Criteria Considerations

(Mark "x" in all boxes that apply.)

- A** owned by a religious institution or used for religious purposes.
- B** removed from its original location
- C** a birthplace or grave
- D** a cemetery
- E** a reconstructed building, object, or structure
- F** a commemorative property
- G** less than 50 years of age or achieved significance within the past 50 years

Narrative Statement of Significance

(Explain the significance of the property on one or more continuation sheets.)

9. Major Bibliographical References:

Lang, Ossian. *History of Freemasonry in the State of New York*. New York, 1922.

Previous documentation on file (NPS):

- preliminary determination of individual listing (36 CFR 67) has been requested.
- previously listed in the National Register
- previously determined eligible by the National Register
- designated a National Historic Landmark
- recorded by historic American Building Survey

- Recorded by Historic American Engineering Record

Areas of Significance:

(Enter categories from instructions)

Social History

Architecture

Period of Significance:

1928-29

Significant Dates:

1928-29

Significant Persons:

na

Cultural Affiliation:

NA

Architect/Builder:

R. E. Sluyter

Primary location of additional data:

- State Historic Preservation Office
- Other State agency
- Federal Agency
- Local Government
- University
- Other repository: Lewis County Historical Society

**United States Department of the Interior
National Park Service
National Register of Historic Places**

**Lowville Masonic Temple
Lowville, Lewis County, New York**

Continuation Sheet

Section 8 Page 1

Significance

The Lowville Masonic Temple is architecturally significant as a substantially intact example of Georgian-inspired civic architecture in the village of Lowville. Built in 1928-1929 as a meeting hall for the local order of Masons, the building is also significant under criterion A for its association with one of America's most important fraternal organizations.

The area that became Lowville originally was included in a vast tract of land known as the Macomb Purchase of 1791, which was assembled from lands ceded by the Oneida Indian nation following the Revolutionary War. A portion of these lands were further subdivided the following year, when they were acquired by four principal investor/speculators as the Black River Tract. The region's abundant timber, water resources and fertile agricultural lands attracted settlers primarily from New England, who rushed to purchase farms and building lots offered by Nicholas Low through his agent, Silas Stow. Situated near the confluence of Mill Creek with the Black River, Lowville was first settled in 1799. The community grew as the principal residential, civic and commercial center of Lewis County, becoming an incorporated village in 1854.

The first meeting of Lowville's Masonic lodge was held May 20, 1848. The Free and Accepted Masons Lodge No.134 was the first Masonic lodge established in Lewis County. The Lowville lodge for many years met in upper-story rooms of a series of commercial buildings. In 1869, the Masons actually sold and purchased bonds to underwrite the cost of constructing their third-floor meeting space above a commercial building then under construction. In 1891, the Masons purchased an existing commercial building for use as their lodge, which afforded the group multiple rooms for various functions. In 1928-1929 the nominated Lowville Masonic Temple building was constructed on South State Street near the center of Lowville's commercial district. Architect R. E. Sluyter of Herkimer Plans prepared the plans for the building. Erected by Lowville contractors W. H. Rich & Sons, the Masonic Temple Building was fully furnished and ready for occupancy March 15, 1929.

The Lowville Masonic Temple meets Criterion C in the area of architecture as a substantially intact, representative example of a Georgian Revival style civic building in the Village of Lowville. It also meets Criterion A in the area of social history as an integral part of the history of Lowville and surrounding Lewis County. Built in 1928-1929 and still in use as a Masonic meeting hall, the building typifies social and fraternal halls of the period, with special-purpose rooms on the basement and first-floor levels and a ceremonial meeting space on the second floor.

The Grand Lodge of New York was organized in 1782. After separating from the Grand Lodge of England in 1787, the order assumed the title of Grand Lodge of the Free and Accepted Masons of the State of New York. By 1800, 91 lodges were enrolled and active in New York State, with a total membership of 5,000. In 1848, Lowville's Lodge #134 was authorized in Lewis County. With its Georgian Revival form and embellishments, the nominated Masonic Temple building of

United States Department of the Interior
National Park Service
National Register of Historic Places

Lowville Masonic Temple
Lowville, Lewis County, New York

Continuation Sheet

Section 8 Page 3

and D. A. Stewart. In 1856 the lodge moved to new quarters on the third floor of what is now known as the Samuel A. Loiselle block and remained there until 1869, when it was moved to the present site following the big fire of January 17, 1869. This fire which broke out early Sunday morning in the old hotel owned by William Howell, destroyed the buildings fronting on State Street both north and south of the hotel for 210 feet. For a time the fire threatened to wipe out the entire business section of the village.

The question of owning its own hall had been discussed by the members on several occasions but not until after the fire was tangible action taken toward that end. During the season of 1869 new brick buildings were erected to replace those destroyed. Lowville Lodge, No. 134 F. and A.M, and Lowville Chapter, No 223, R. A. M., took action and erected the third story over the Austin and Reed Block now known as the Journal and Republican block. The cost of this first property venture was \$6,000. To meet the first indebtedness the money came from the sale of bonds and other sources as follows: Bonds issued in September 1869, at 7 percent amounting to \$3,250. Six thousand dollars was a lot of money back in those days and it required a great deal of courage for our brethren to thus plunge in debt. Only their true love for Masonry and the things for which Masonry stood, and still stands today, prompted them to make the sacrifices they did. It meant sacrifices in every sense of the word, for every member bought as many of the bonds as he possibly could. Even then it was necessary to sell a large number of the bonds outside of the membership. Stories of the early struggles of the lodge have been handed down from generation to generation, but the records of 1869 and 1871 give mute testimony to the difficulty of raising money in those days. The bonds all sold; the lodge in 1871 still was faced with the problem of raising a balance of \$2,750. After a vigorous campaign for funds a total of \$922 was subscribed. A short time later an excursion was held to the famous St. Lawrence river, including a tour among the Thousand Islands, which resulted in \$700 more being added to the coffers. Then followed a concert which brought in \$173 more. Taking fresh heart both the lodge and chapter put their shoulders to the wheel and earned the balance. In 1885 the outstanding bonds were called and a reissue made bearing 5 percent interest.

The membership of the lodge during this period gradually increased and it was not long until the hall facilities were overcrowded. In July, 1891, the lodge and chapter purchased the Van Brocklin store for \$6,000, thus permitting of an addition to their rooms to include an ante-room and a club room. At that time bonds were issued amounting to \$7,200 at 4 percent. On December 18, 1907, the last of this issue was paid and cancelled. During the first 32 years, \$2,000 of the last issue of bonds were redeemed, whereas the remaining \$5,200 was redeemed in 16 years. Lowville Lodge was originally in the old Jefferson-Lewis Masonic district, but as new lodges began to spring up throughout these two counties, the work of the district deputy and assistant grand lecturer grew to such proportions that it was almost impossible to give justice to their tasks. This condition also existed in other parts of the state and a number of years ago Grand Lodge made a redistribution of

United States Department of the Interior
National Park Service
National Register of Historic Places

Lowville Masonic Temple
Lowville, Lewis County, New York

Continuation Sheet

Section 8 Page 4

all the districts. Thus was created what is now the First Lewis-Jefferson district and the Second Lewis-Jefferson district. Lowville Lodge is now in the First Lewis-Jefferson district. A large number of our brethren have risen to fame in our mystic circle and have been honored by Grand Lodge appointments. James L. Knox served as District Deputy Grand Master during 1874 and 1875. A.M. Lanpher was the next member so honored, serving as District Deputy Grand Master in 1885 and 1886. S. Brown Richardson, father of Harold Jay Richardson, past Grand Master of Masons in the State of New York, and beloved by every member of Lowville Lodge, was District Deputy Grand Master in 1892 and 1893.

The same year, 1893, William T. Bush, who has served the lodge the past 16 years as treasurer, was appointed Assistant Grand Lecturer. Gilbert R. Easton served as District Deputy Grand Master from 1902 to 1904. George M. Rice served as District Deputy Grand Master in 1925. In all probability there was no member of Lowville Lodge served on the staff of Grand Lodge, who has put any more heart in his work, than has Rev. Cuthbert C. Frost, and a very dear personal friend of Past Grand Master Richardson. Brother Frost was appointed, Grand Chaplain in 1924. He served continuously since then. He was made a Mason on November 3, 1905, while serving the pastorate of the Presbyterian Church in this village.

May 6, 1925, is a date that never will be forgotten by members of the lodge now living, or those who are "made" in years to come. It was on that date that Harold Jay Richardson was elected Grand Master of the Grand Lodge of the State of New York at the 145th annual communication held in New York City. Harold Jay Richardson, was "raised" to the sublime degree of Master Mason in Lowville Lodge on November 3, 1905. His pleasing personality and the fact that he is possessed of a broad and liberal mind soon brought him well earned reward. He passed through the various "chairs" and was elected master of the lodge in 1912. The following year he was appointed District Deputy Grand Master and served this district with marked credit. While he was serving in this capacity, the corner stone of the Masonic Temple in New York city was laid by the then Grand Master, Charles Smith, of Oneida. The question of picking a Deputy Grand Master to serve on this occasion came up and Harold Jay Richardson was selected. His popularity grew throughout the state and in 1918 he was duly elected Junior Grand Warden. In 1920 he advanced to Senior Grand Warden and two years later became Deputy Grand Master. And on the 6th day of May, 1926, he was unanimously elected Grand Master, which position placed him at the head of over 220,000 Masons in New York State.

New York State is the largest jurisdiction in the United States and ranks one-tenth of the membership of the order in North America. On June 18, 1926, Lowville Lodge tendered Grand Master Richardson a reception in honor of his elevation to the highest office in the craft. Over 6,000 people, mostly Masons, gathered in the village that day to pay honor to the "Prince of the North Country" as he was referred to by the press. The affair was held on the fair grounds and all

United States Department of the Interior
National Park Service
National Register of Historic Places

Lowville Masonic Temple
Lowville, Lewis County, New York

Continuation Sheet

Section 8 Page 5

the lodges in the Lewis-Jefferson districts took part. The program opened with a barbecue in the afternoon followed by a mammoth parade at 6 o'clock which passed through the principle streets of the village. In the evening a program of addresses took place on the fair grounds. All the leading Grand Lodge officers were present and paid high tribute to "Harold." It was by far the most colorful event in the history of Lowville and the most impressive Masonic demonstration ever held in northern New York. The lodge has always been progressive and its membership has increased accordingly. At the present time there are 408 members on the Blue Lodge roll and 179 on the rolls of the Chapter.

The lodge quarters were outgrown several years ago and it was through the efforts of several prominent brethren, the central figure of whom was the late S. Brown Richardson, began to plan for a new temple. On October 6, 1922, the Lodge and Chapter purchased the building adjacent to their present quarters, known as the Murray property. The price paid was \$7,000. At the same time they bought a strip of land in the back and adjoining the Murray lot, 20x80 feet from M. A. Mahar, owner of the Hotel Bateman, thus giving them a right of way from Shady Avenue by way of the Town Hall to the rear of their property. The sum of \$500 was paid for this piece of land. Impetus was given the proposed temple movement four years ago when a committee, consisting of S. Brown Richardson, as chairman, George Shepard, George M. Rice, William T. Bush, A. C. Burdick and Miller G. Sherwood, was appointed to devise ways and means for the project. A campaign for funds was immediately launched with the result that a total of \$28,000 was subscribed for over a five year period.

The enthusiasm of the workers in the campaign ran at fever heat, and the membership reacted with the same enthusiasm. For one reason or another, the temple movement gradually dropped from the lime-light, shortly after the close of the campaign for funds and was not revived until the last few months of 1927. Charles H. Arthur was master of the lodge at that time, and he appointed a special committee to look over various available properties in the village with the view of bringing the temple question to a head. Options were secured on the Waters property on State Street and also on Mae Moore property on Dayan Street. These options were taken because of the view of a number of members that it might be more advantageous for the Lodge to buy a desirable private residence and convert it into a temple. R. E. Shuyter, of Herkimer, a widely-known architect who has had considerable experience in building Masonic temples, was called in and after going over the various sites informed the committee that the best site they could choose to erect the temple was on the Murray lot. Mr. Shuyter discouraged them from buying a residence and fixing it over. Finally he was authorized to submit plans for a new temple, which he promptly did, and on January 6, 1928, the Lodge voted to accept them and proceed with the building.

The contract for the building of the temple was originally awarded to William Lyon & Sons of Herkimer, but a few days later was purchased by W. H. Rich & Sons of this village. Brother Henry

**United States Department of the Interior
National Park Service
National Register of Historic Places**

**Lowville Masonic Temple
Lowville, Lewis County, New York**

Continuation Sheet

Section 8 Page 6

Rich, a member of this firm, is a member of this lodge. The corner stone of the new temple was laid April 14, 1928, by M. W. Harold J. Richardson, Grand Master of the State of New York, with a silver trowel presented by the master of the local lodge, Stewart J. Harris. The following officers of the Grand Lodge participated in the ceremonies: John A. Dutton, Deputy Grand Master; Charles H. Johnson, Senior Grand Warden; R. Elliott Owens, Junior Grand Warden; Millard V. H. Hamblin, Acting Grand Marshall; Robert J. Kenworthy, Grand Secretary. Under the able supervision of the building committee, consisting of S. Brown Richardson, deceased, honorary chairman; Leon S. Miller, chairman; Charles H. Arthur, George M. Rice, Edward J. Boshart, Albert C. Burdick and Earl H. Barnes, the building was completed and furnished by March 15, 1929, on which date the Lodge held its first meeting in its new quarters.

The new temple measures 120x50 feet, with an imposing front of red brick and gray stone in the colonial style of architecture. The building is two stories and basement in front with one story above the basement in the rear. On the right of the entrance on the first floor is a card room and on the left a spacious lounge room with fireplace. A unique feature of the building is the large lodge room on the first floor, with its beautiful furnishings, perfect acoustics and wonderful indirect lighting effects. The first floor also accommodates a large coat room, toilet and regalia room. On the second floor is located the billiard and pool room and a ladies' reception and committee room. The basement is equipped with bowling alleys and shuffleboard and contains the large dining hall with a completely furnished kitchen. The building is heated throughout with steam generated by an oil burner. This stately building will stand for generations as monument to the loyalty and sacrifice of the present members of the Craft who had the courage, ability and energy to construct this magnificent temple.

[Thus ends the newspaper account. In 2000 when Lewis County Historical Society purchased the Temple there were approximately 100 members on the rolls of the "Blue Lodge" (though not all were active.) As other Lodges have closed, the Blue Lodge has embraced brothers interested in retaining an affiliation with this, the largest Lodge in Lewis County. The decline in membership continues; in 2008 there are a total of 79 members of the Lowville Lodge No. 134, F. and A. M.]

Lowville Masonic Temple
Lowville, Lewis County, New York

10. Geographical Data

Acreeage of Property approximately one acre

UTM References: Lowville Quad, zone 18
1: 460495/4848151

Verbal Boundary Description: The boundary of the nominated property coincides with the legal lot lines associated with the nominated resources as delineated on the attached county tax map (Tax Map #vvvv).

Boundary Justification: The boundary coincides with the entire extent of land historically and currently associated with the nominated building.

11. Form Prepared By: research by the Lewis County Historical Society.

contact: Raymond Smith and Nancy Todd, Program Analysts

organization Division for Historic Preservation date July, 2008

street & number Peebles Island, Box 189 telephone (518) 237-8643 x 3260

city or town Waterford state NY zip code 12188

Additional Documentation

Submit the following items with the completed form:

Continuation Sheets

Maps

A **USGS map** (7.5 or 15 minute series) indicating the property's location

A **Sketch map** for historic districts and properties having large acreage or numerous resources.

Photographs

Representative **black and white photographs** of the property.

Property Owner (Complete this item at the request of the SHPO or FPO)

name _____

street & number _____ telephone _____

city or town _____ state _____ zip code _____

**United States Department of the Interior
National Park Service**

**National Register of Historic Places
Continuation Sheet**

**Lowville Masonic Temple
Lowville, Lewis Co., NY**

Photographs

Photo Key

Lowville Masonic Temple
Lowville, Lewis County, NY
R. Smith and T. Bowman, 2008
Digital images @ NYSHPO, Waterford NY

Photo No.:

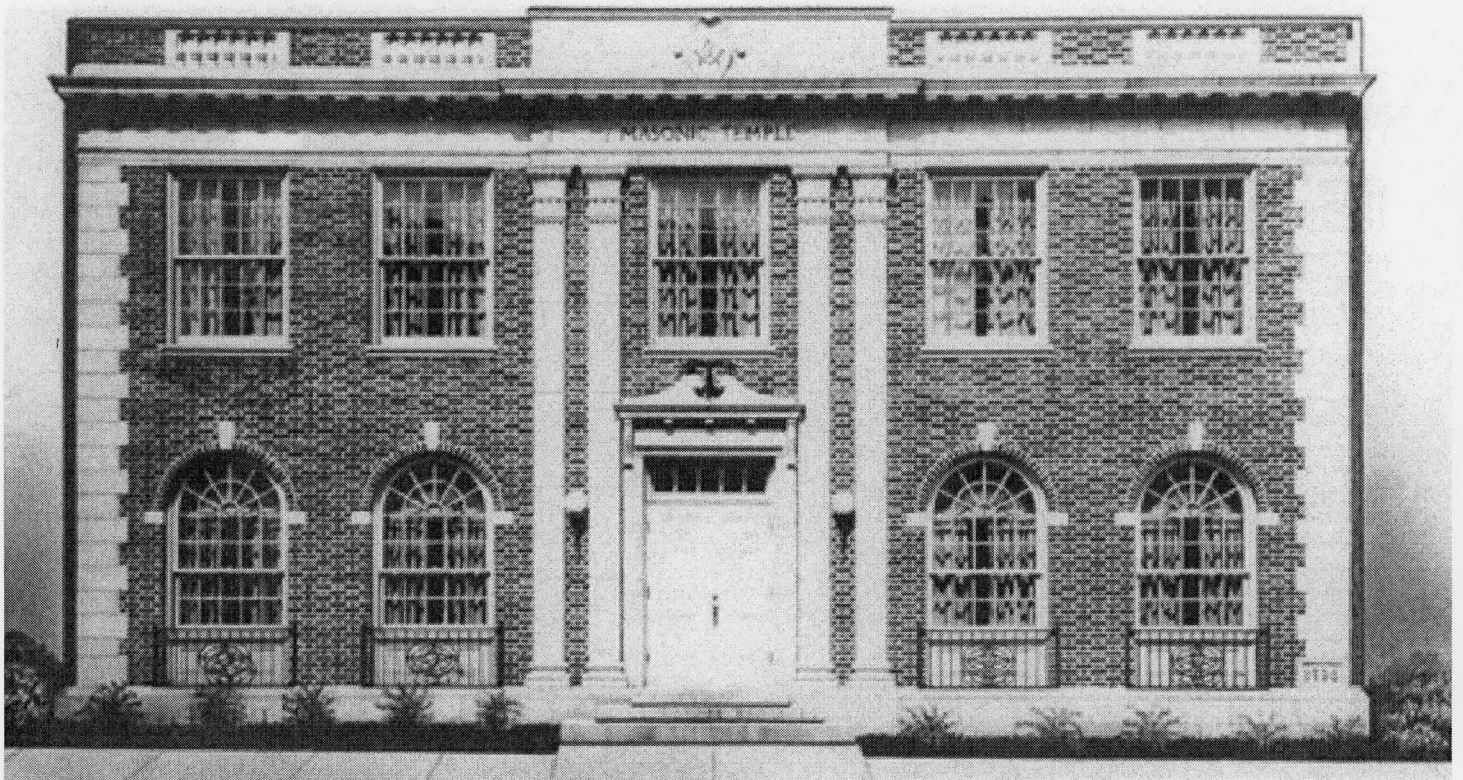
1. Principal (West) elevation, view E;
2. Façade detail, view E;
3. South and rear (East) walls, view NW;
4. Main Masonic meeting hall (former), from balcony;
5. Current Masonic meeting room (former dining room).

United States Department of the Interior
National Park Service

National Register of Historic Places
Continuation Sheet

Continuation Sheet

Lowville Masonic Temple
Name of Property
Lowville, Lewis Co. NY
County and State



Principal (west) elevation, 1920s historic view

United States Department of the Interior
National Park Service

National Register of Historic Places
Continuation Sheet

Continuation Sheet

Lowville Masonic Temple
Name of Property
Lowville, Lewis Co., NY
County and State



Entrance foyer, 1920s historic view



Entrance foyer, current view

United States Department of the Interior
National Park Service

National Register of Historic Places
Continuation Sheet

Continuation Sheet

Lowville Masonic Temple

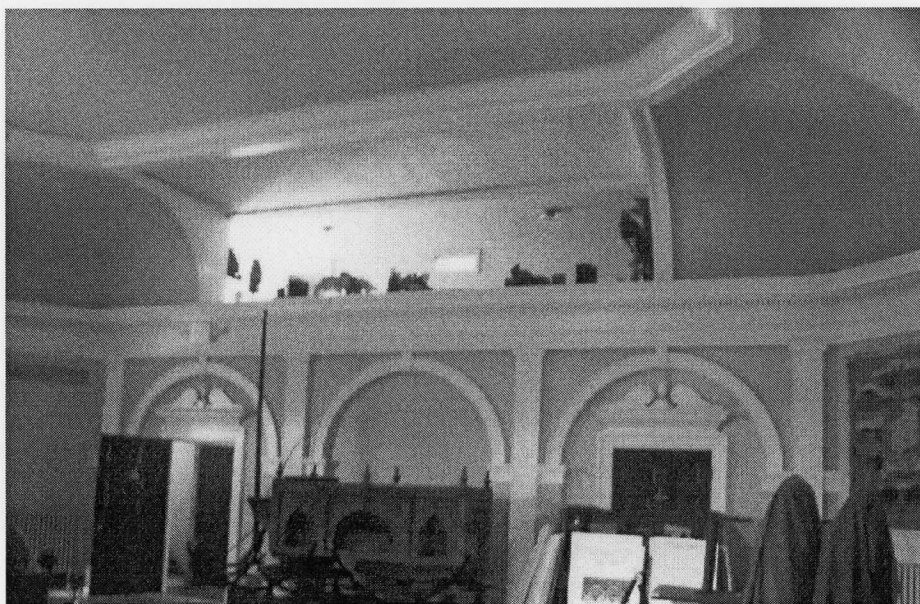
Name of Property

Lowville, Lewis Co. NY

County and State



Main meeting hall, 1920s historic view

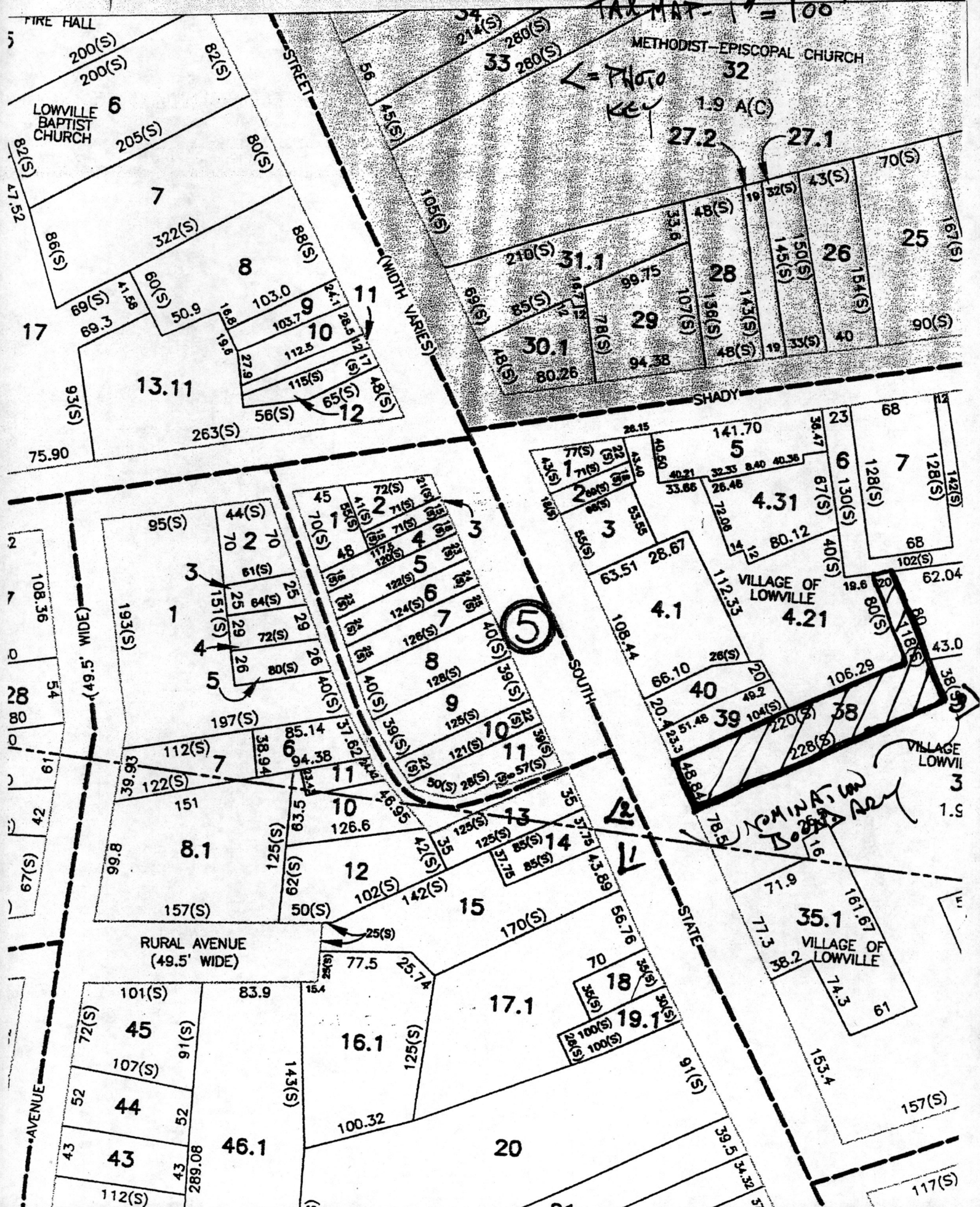


Main meeting hall (former), current view

Ray Smith - Temple

LOWVILLE MASONIC LODGE NO. 100
LOWVILLE LODGE A. N. S. 100

TAX MAP - 1" = 100'



METHODIST-EPISCOPAL CHURCH

LOWVILLE BAPTIST CHURCH

Photo KEY

1.9 A(C)

SHADY

VILLAGE OF LOWVILLE

NOMINATION Board
[Signature]

VILLAGE OF LOWVILLE

5

VILLAGE OF LOWVILLE

VILLAGE OF LOWVILLE

157(S)

117(S)

UNITED STATES DEPARTMENT OF THE INTERIOR
NATIONAL PARK SERVICE

NATIONAL REGISTER OF HISTORIC PLACES
EVALUATION/RETURN SHEET

REQUESTED ACTION: NOMINATION

PROPERTY Lowville Masonic Temple
NAME:

MULTIPLE
NAME:

STATE & COUNTY: NEW YORK, Lewis

DATE RECEIVED: 8/06/08 DATE OF PENDING LIST: 8/25/08
DATE OF 16TH DAY: 9/09/08 DATE OF 45TH DAY: 9/19/08
DATE OF WEEKLY LIST:

REFERENCE NUMBER: 08000919

REASONS FOR REVIEW:

APPEAL: N DATA PROBLEM: N LANDSCAPE: N LESS THAN 50 YEARS: N
OTHER: ~~N~~ PDIL: N PERIOD: N PROGRAM UNAPPROVED: N
REQUEST: Y SAMPLE: N SLR DRAFT: Y NATIONAL: N

COMMENT WAIVER: N

ACCEPT RETURN REJECT 9.19.08 DATE

ABSTRACT/SUMMARY COMMENTS:

Entered in
The National Register
of
Historic Places

RECOM./CRITERIA _____

REVIEWER _____ DISCIPLINE _____

TELEPHONE _____ DATE _____

DOCUMENTATION see attached comments Y/N see attached SLR Y/N

If a nomination is returned to the nominating authority, the nomination is no longer under consideration by the NPS.

Missing Core Documentation

Property Name

Lowville Masonic Temple

County, State

Lewis County,
New York

Reference Number

08000919

The following Core Documentation is missing from this entry:

Nomination Form

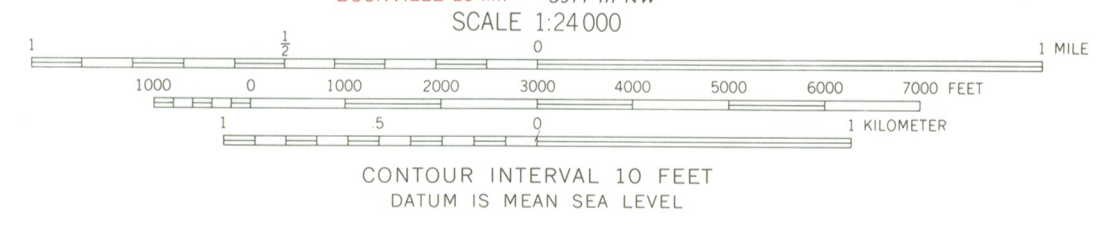
Photographs

USGS Map



LOWVILLE MASONIC TEMPLE
LOWVILLE, LEWIS CO. NY
LOWVILLE QUAD.
18 / 460496 / 4848151

Mapped, edited, and published by the Geological Survey
Control by USGS and USC&GS
Topography by photogrammetric methods from aerial
photographs taken 1966. Field checked 1966
Polyconic projection. 1927 North American datum
10,000-foot grid based on New York coordinate system, central zone
1000-meter Universal Transverse Mercator grid ticks,
zone 18, shown in blue
Fine red dashed lines indicate selected fence and field lines where
generally visible on aerial photographs. This information is unchecked
Map photinspected 1980
No major culture or drainage changes observed



ROAD CLASSIFICATION

Primary highway, all weather, hard surface	Light-duty road, all weather, improved surface
Secondary highway, all weather, hard surface	Unimproved road, fair or dry weather
	State Route



LOWVILLE, N. Y.
SW/4 LOWVILLE 15' QUADRANGLE
N4345-W7522.5/7.5
1966
PHOTOINSPECTED 1980
AMS 5971 IV SW-SERIES V821

THIS MAP COMPLIES WITH NATIONAL MAP ACCURACY STANDARDS
FOR SALE BY U.S. GEOLOGICAL SURVEY
DENVER, COLORADO 80225, OR RESTON, VIRGINIA 22092
A FOLDER DESCRIBING TOPOGRAPHIC MAPS AND SYMBOLS IS AVAILABLE ON REQUEST

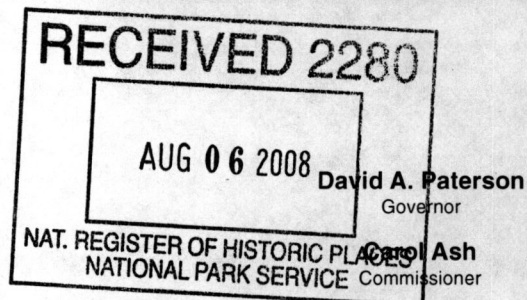


New York State Office of Parks, Recreation and Historic Preservation

Historic Preservation Field Services Bureau • Peebles Island, PO Box 189, Waterford, New York 12188-0189

518-237-8643

www.nysparks.com



August 8, 2008

Ms. Alexis Abernathy
National Park Service
National Register of Historic Places
1201 Eye St. NW
8th Floor
Washington, D.C. 20005

Re: Transmittal of National Register
Nominations

Dear Ms. Abernathy:

I am pleased to transmit four new National Register nominations to be considered for listing by the Keeper of the National Register as follows:

Lowville Masonic Temple, Lewis Co., NY

Hudson Almshouse, Columbia Co., NY (individual nomination within listed district)

Strand Theater, Plattsburgh, Clinton Co., NY

Roe Cobblestone Schoolhouse, Butler, Wayne Co., NY (NYS Cobblestone MPDF)

In addition, I am enclosing replacement pages for the Friendship Free Library nomination in Allegany Co. that we had sent in earlier. These pages supplement some of the narrative information provided earlier and we have moved the embedded photos to separate continuation sheets.

Thank you for your assistance in processing these proposals. Please feel free to call on me at 518-237-8643 ext. 3258 if any questions arise.

Sincerely,

Mark L. Peckham
National Register
Program Coordinator

enclosures

