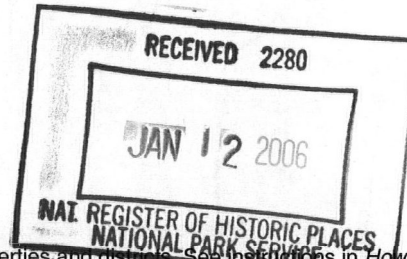


United States Department of the Interior
National Park Service

National Register of Historic Places
Registration Form



This form is for use in nominating or requesting determinations for individual properties and districts. See instructions in *How to Complete the National Register of Historic Places Registration Form* (National Register Bulletin 16A). Complete each item by marking "X" in the appropriate box or by entering the information requested. If an item does not apply to the property being documented, enter "N/A" for "not applicable." For functions, architectural classification, materials, and areas of significance, enter only categories and subcategories from the instructions. Place additional entries and narrative items on continuation sheets (NPS Form 10-900a). Use a typewriter, word processor, or computer, to complete all items.

1. Name of Property

historic name Davis, Charles Homer, House

other name/site number _____

2. Location

street & number 381 West Neck Road not for publication

city or town Lloyd Harbor N/A vicinity

state New York code NY county Suffolk code 103 zip code 11743

3. State/Federal Agency Certification

As the designated authority under the National Historic Preservation Act, as amended, I hereby certify that this nomination request for determination of eligibility meets the documentation standards for registering properties in the National Register of Historic Places and meets the procedural and professional requirements set forth in 36 CFR Part 60. In my opinion, the property meets does not meet the National Register criteria. I recommend that this property be considered significant nationally statewide locally. (See continuation sheet for additional comments.)

Miranda Carter, SA/PO 12/14/05
Signature of certifying official/Title Date

New York State Office of Parks, Recreation and Historic Preservation
State or Federal agency and bureau

In my opinion, the property meets does not meet the National Register criteria. (See continuation sheet for additional comments.)

Signature of certifying official/Title Date

State or Federal agency and bureau

4. National Park Service Certification

I hereby certify that the property is:

- entered in the National Register. See continuation sheet.
- determined eligible for the National Register See continuation sheet.
- determined not eligible for the National Register.
- removed from the National Register.
- other, (explain:)

Edson H. Beall
Signature of the Keeper

2/22/06
Date of Action

5. Classification

Ownership of Property
(check as many boxes as apply)

- public-local
- private
- public-State
- public-Federal

Category of Property
(check only one box)

- district
- building(s)
- site
- structure
- object

Number of Resources within Property
(Do not include previously listed resources in the count.)

Contributing	Noncontributing	
1	1	buildings
_____	_____	sites
_____	_____	structures
_____	_____	objects
1	1	Total

Name of related multiple property listing
(Enter "N/A" if property is not part of a multiple property listing.)

N/A

Number of contributing resources previously listed in the National Register

N/A

6. Function or Use

Historic Function
(Enter categories from instructions)

DOMESTIC/residence

Current Function
(Enter categories from instructions)

DOMESTIC/residence

7. Description

Architectural Classification
(Enter categories from instructions)

Second Empire

Materials
(Enter categories from instructions)

foundation masonry

walls wood

roof slate

other _____

Narrative Description

(Describe the historic and current condition of the property on one or more continuation sheets.)

Davis, Charles Homer, House
Suffolk County, New York

**NATIONAL REGISTER OF HISTORIC PLACES
CONTINUATION SHEET**

Section number 7 Page 1

DESCRIPTION

Located on a small rise on the west side of West Neck Road, the Charles Homer Davis House is a clapboard-clad, three bay, double pile, two and one-half story, Second Empire-style house resting on an elevated brick and stone foundation. A truncated tower is appended to the southern side of the building. Service facilities project from the rear of the house, and a porch shades the ground story on the eastern and southern sides of the house. Foliate-shaped roof cresting decorates the ridgeline of the slate-shingled mansard roof. The main part of the building is forty feet wide and forty-two feet deep, while the service area is approximately sixteen feet wide and twenty feet deep. The house is reached by a curving driveway that survives from the original landscape layout. A pool and a non-contributing guest house/small stable are located south of the main building.

Eastern Façade

The main or eastern façade of the structure overlooks West Neck Road. Its three bays are clearly delineated by symmetrically placed window and door openings on each floor and dormers in the Mansard. The three bay porch, almost five feet above the ground, is reached by a central stairway. Paired chamfered posts, crowned by simplified capitals, support its roof. Cutwork brackets in a foliate design spring longitudinally from capitals of each interior post, while volute-shaped brackets spring transversely from each capital, adorning the porch eave and porch beams. Vase-shaped turned balusters topped by curved profile rails form the balustrade. The central entrance is framed by a deep ogee molding. The paneled stile-and-rail double-doors of the entry have a large upper panel of leaded glass and retain the period hardware. A three-light horizontal transom surmounts the door. The entire entry ensemble is topped by a horizontal ogee-molded cornice. The flanking paired windows are encircled by the same molding as used on the door frame and top a pair of recessed spandrel panels. The windows hold double hung-sash, and are topped by horizontal ogee-molded cornices.

The three bays of the second story have paired windows generally matching those on the first floor, with the exception that the spandrel panels are eliminated. A deeply overhanging eave, decorated with large modillions, separates the second floor from the mansard. The three dormers are highly decorated. Each arched opening is flanked by a volute scroll decoration, while modillions project to support a large triangular pediment above each opening. The central window is distinguished from the others in that it consists of paired arched openings with two over two double-hung sash, while the flanking dormers have larger single arched openings that are also filled with two over two sash.

Northern Façade

The northern façade facing the former carriage house is clearly a minor façade and appears to have retained all of its original features. The openings in the wall are asymmetrical reflecting the use of the interior. At the eastern end of the façade on the ground floor level is an eight-foot wide bay window that projects three feet out from the wall, providing light into a small parlor. The bay is further decorated by a paneled dado and a modillioned cornice. To the west of the bay window are two windows, flanking an internal chimney that provides illumination for the dining room. These windows retain the original two over two sash. The second floor windows, one placed at either end of the main façade, match the windows on the ground floor. In the mansard, the dormers match the flanking dormers on the east façade and alternate with a pair of chimneys. The

Davis, Charles Homer, House
Suffolk County, New York

**NATIONAL REGISTER OF HISTORIC PLACES
CONTINUATION SHEET**

Section number 7 Page 2

chimneys are decorated with two corbelled stringcourses, one parallel to the springing line of the window arches, and the other at the height of the iron cresting. Above the upper stringcourse, the chimneys are further decorated with recessed paneling. The appended service wing is clearly visible. The later addition of a second floor eave juts into a window on the western elevation of the main house. Windows with moldings and two over two sash are arrayed functionally on the walls of the two floors, with three windows on the second floor and one on the first.

Western Façade

Most of the western or rear façade of the building is visible, although partially obscured by the service wing. It has generally the same fenestration and decorative forms of the previous two elevations with a few exceptions. The dormers are smaller and have segmental arched pediments. The second floor windows alternate as single and paired windows, and the first floor windows and central entry align with those on the eastern façade. A porch with columns matching the main façade, but lacking brackets or modillions, wraps around on the southern façade.

The Tower

A three-story tower is appended to the southwest corner of the main mass of the building. With three sides exposed, each elevation is almost identical. The ground floor has a double window located in the center of each elevation and matches those found on the first floor of the main facade. The second story has slightly smaller two over two double sash windows in the center of each wall. On the southern and eastern elevations, the window heads abut large brackets that support balconnettes with wrought iron railings. The fenestration on the third floor follows the same disposition of the lower floors, but is articulated as paired arches with exaggerated keystones. These windows are surmounted by triangular pediments supported by large modillions. The tower is capped by a modillioned cornice. Its mansard roof was removed approximately forty years ago.

The Southern Façade

The remainder of the southern exterior not taken up by the tower is a virtual mirror image of the northern façade, with a bay window and a standard double hung window flanking a hidden chimney on the ground floor. The second floor mirrors its counterpart to the east with the exception of a small bathroom window just east of the larger western sash. The dormers and centrally placed chimney also mirror those found on the eastern façade.

Interior

The interior plan is a straightforward center hall type. On the ground floor, the center hall and main stair are flanked by a large parlor on the south and small parlor leading via large pocket doors to a dining room on the north. At the rear of the large parlor, a wide hall leads to the tower room, while the kitchen wing is accessed via the dining room. The second floor is given over to large bedrooms. The hall window on this level has a window seat over the main entrance. The third floor, formerly used for service quarters, is very plain in its treatment. This level is reached via a small stair on the north side of the second floor.

Davis, Charles Homer, House
Suffolk County, New York

**NATIONAL REGISTER OF HISTORIC PLACES
CONTINUATION SHEET**

Section number 7 Page 3

The service wing in the rear has been remodeled with a new kitchen on the ground floor (saving the tiled oven space) and a living space on the second floor. The two spaces are connected via a stair on the northern side of the wing. The basement is accessed from the kitchen and reveals the stone and brick foundation with arched brick piers in the exterior foundations walls.

The interior of the building is remarkably intact with most original floor finishes, several mantelpieces and ceiling medallions having survived. The ground floor parlors have retained their Second Empire-style mantels and crown moldings, while the dining room has an Eastlake-era replacement fireplace mantel. The wood floor of the entry hall has a pattern of alternating dark and light woods. The floor of the hall to the tower is chevron patterned, while the northern parlor floor has a rough floor, with tack marks indicating that it was once carpeted. The dining room floor may also have been carpeted. Ceiling medallions with classical motifs are found in each of the main rooms on the ground floor. The second level hall floor has a dark striped border with a diagonal pattern at the eastern end. A modern bath was added in the middle of the southern side of the floor. Most bedrooms on the floor have retained original sinks (either in-room or in closets) and marble mantels.

8. Significance

Applicable National Register Criteria

(Mark "x" in one or more boxes for the criteria qualifying the property for National Register listing.)

- A** Property is associated with events that have made a significant contribution to the broad patterns of our history.
- B** Property is associated with the lives of persons significant in our past.
- C** Property embodies the distinctive characteristics of a type, period, or method of construction or represents the work of a master, or possesses high artistic values, or represents a significant and distinguishable entity whose components lack individual distinction.
- D** Property has yielded, or is likely to yield, information important in prehistory or history.

Criteria Considerations

(Mark "x" in all the boxes that apply.)

Property is:

- A** owned by a religious institution or used for religious purposes.
- B** removed from its original location.
- C** a birthplace or grave.
- D** a cemetery.
- E** a reconstructed building, object, or structure.
- F** a commemorative property.
- G** less than 50 years of age or achieved significance within the past 50 years.

Narrative Statement of Significance

(Explain the significance of the property on one or more continuation sheets.)

Areas of Significance

(enter categories from instructions)

Social History _____

Architecture _____

Period of Significance

C. 1869 _____

Significant Dates

Significant Persons

(Complete if Criterion B is marked above)

Cultural Affiliation

N/A _____

Architect/Builder

Charles Homer Davis _____

9. Major Bibliographical References

Bibliography

(Cite the books, articles, and other sources used in preparing this form on one or more continuation sheets.)

Previous documentation on file (NPS):

- preliminary determination of individual listing (36 CFR 67) has been requested
- previously listed in the National Register
- previously determined eligible by the National Register
- designated a National Historic Landmark
- recorded by Historic American Buildings Survey # _____
- recorded by Historic American Engineering Record # _____

Primary location of additional data:

- State Historic Preservation Office
- Other State agency
- Federal agency
- Local government
- University
- Other Name of repository: _____

Davis, Charles Homer, House
Suffolk County, New York

**NATIONAL REGISTER OF HISTORIC PLACES
CONTINUATION SHEET**

Section number 8 Page 1

STATEMENT OF SIGNIFICANCE

Built circa 1869, the Charles Homer Davis House is an excellent example of a large Second Empire-style house in an area where few houses of this sumptuousness, style or size were built in the mid-to-late nineteenth century. It is in a remarkable state of preservation, having retained all but its tower roof and front balconette on the exterior, while virtually all decorative material, including floor finishes have survived on the interior. Architectural details of the house can be linked to details from pattern books of the period, particularly Cummings and Miller's *Modern American Architecture* (1867). Consequently, the Charles Homer House is considered significant under Criterion C as an excellent example of its type, given its high style design and remarkable state of preservation. The house is also significant under Criterion A for its association with Charles Homer Davis, a successful New York City businessman who returned to West Neck to established one of the earliest estate properties in the Lloyd Harbor area in the Town of Huntington.

HISTORICAL BACKGROUND

Lloyd Harbor is a village in Suffolk County that was incorporated in 1926 and named for the Lloyd family who were the original seventeenth and eighteenth century landowners of the neck of land that extended out into Long Island Sound between Huntington and Cold Spring Harbors. The incorporated village included a number of estates of wealthy residents along West Neck Road, such as Roland Conklin, who made his fortune in sugar (the land is now part of the Seminary of the Immaculate Conception), and Marshall Field III whose property became Caumsett State Park (listed in the National Register of Historic Places in 1979). Wealthy businessman Charles Homer Davis was also attracted to West Neck Road and predated Conklin and Field by several decades. When Davis settled in the area known as West Neck, the adjacent section known as Lloyd Neck was actually part of Queens County, annexed by Suffolk County in 1885 by an act of the State Legislature.

Charles Homer Davis (1828-1884) was a classic "Horatio Alger" example of the type of person who was raised in a small village, moved to a large city, became successful and then returned to his hometown, settling on a large estate. According to his obituary in the *Long-Islander* (14 February 1884), Charles Homer Davis was born in the vicinity at West Neck in 1828. He apprenticed in the dry goods store of local resident Zophar Oakley and left for Manhattan to seek his fortune upon on reaching his majority. Since Davis' home town was known for its brick kilns, it seemed a matter of course that Davis entered into a partnership in a Manhattan brick yard, real estate and building company that was located at the foot of 36th Street.¹ According to city directories and the *New York Times*, Davis lived in Manhattan with his wife Adeline (they were married in 1851) and his occupation was listed as a builder.

Most of the new houses his company advertised for sale were in the Murray Hill section of Manhattan, an area that was extremely fashionable as early as the 1850s.² According to his obituary, Davis was very successful,

¹ Davis placed numerous advertisements for his business in the New York Times between 1857 and 1876. These ads were accessed by Proquest's online subscription database service.

² See also *New York City Directory*, 1869, accessed online at Ancestry.com on 7 October 2005. The Davis genealogy is also on file at the Huntington Historical Society.

Davis, Charles Homer, House
Suffolk County, New York

**NATIONAL REGISTER OF HISTORIC PLACES
CONTINUATION SHEET**

Section number 8 Page 2

“accumulating a very large fortune consisting mainly of real estate in New York City.”³ In the 1869 *City Directory* for New York City, his occupation was again listed as a builder, but this time his residence was on East 17th Street, some distance from his business still located at the foot of 36th Street. Also in 1869, he left Manhattan to return to West Neck to live on his new estate on West Neck Road and a large, Second Empire Style house that rested on a rise overlooking the road. The 1870 U.S. Census listed Davis as head of the household in West Neck, at home with his family of three and three Irish Servants. The house and land were valued at \$10,000 and his personal property at \$2,000. Davis continued to maintain his business in Manhattan until its sale in 1876. He also remained active in the Brick Presbyterian Church in New York City and was noted as a wedding guest at society weddings until 1880.⁴

With a background in speculative real estate in the fashionable sections of Manhattan, Davis would have kept up on the latest house styles, particularly for his showcase estate in his hometown on Long Island. The French Second Empire style, first introduced in 1852 in Manhattan by European trained Detlef Lienau had become the rage after the Civil War, following the popularity and demands for French fashion and the consolidation of the French empire by Napoleon III. Periodicals such as *Godey's Lady's Book* published Second Empire house designs in almost every issue in the mid-nineteenth century. George Woodward, Calvert Vaux, Comstock and Bicknell, and Marcus Cummings all published architectural pattern books with illustrations of buildings, including those in the French Second Empire style. In 1872, the *New York Times* proclaimed that a Mansard Mania was sweeping the country.⁵

Davis reflected the latest fashion in the creation of his house, given the mania for things French. Since his listed occupation was a builder, it is likely that he was involved in the design and construction of the house, probably relying on images from pattern books and periodicals for the design. Virtually every element of the house, from dormers to mantels to china sinks, reflected the latest fashion of 1869. In fact, the dormer and window details appear to be based on plates 27 and 28 of Cummings and Miller's *Modern American Architecture* (1868). The impressive design and estate was also illustrated in the *History of Suffolk County*, published in 1882 that often featured lithographs of buildings of benefactors who contributed to the cost of the publication.

After Davis's death in 1884, his wife became the owner of the property and remained on the estate until her death in 1895. The property remained her family until 1927, when it was sold to Leander Faber, a New York State Supreme Court Judge in the Second Judicial District. Over the years, parts of the estate were sold off and the carriage house became the main residence of the adjacent property to the north and the windmill was demolished at some unknown date. The house also lost its tower roof in the early 1960s and the balconette over the front porch was removed at some point. In the 1970s and 1980s, Payson family who owned the property at the time began to slowly restore the house and eventually sold the house to musician and recording artist Taylor Dayne (Leslie Wunderman). Around 1993, Stephen and Linda Meresman bought the house and remaining property and continue the restoration work that was begun previously. In a recent architectural survey by the Town of Huntington, only eight Second-Empire houses were listed as extant and the Davis house is by far the most spectacular and the most intact.

³ *Long-Islander* Obituary, 14 February 1884.

⁴ *New York Times*, 29 April 1880.

⁵ Editorial, November 1872. See also DD. Reiff. *Houses from Books*. (PSU Press, 2000): Chapter 4.

Davis, Charles Homer, House
Suffolk County, New York

**NATIONAL REGISTER OF HISTORIC PLACES
CONTINUATION SHEET**

Section number 9 Page 1

BIBLIOGRAPHY

Cummings, Marcus F. and Charles C. Miller. *Modern American Architecture*. Toledo, OH: S. Bailey & Co., 1868.

History of Suffolk County, New York, with Illustrations, Portraits, & Sketches of Prominent Families and Individuals. New York: W.W. Munsell, 1882.

Lloyd Harbor—A Brief History. Found Online at http://www.lloydharbor-ny.org/village/lh_brief_history.htm, November 2005.

Long Islander Obituary, February 14, 1884.

New York City Directory, 1869, accessed online at *Ancestry.com* on October 7, 2005. The Davis genealogy is also on file at the Huntington Historical Society

New York Times, April 29, 1880.

Reiff, Daniel D. *Houses from Books :Treatises, Pattern Books, and Catalogs in American Architecture, 1738-1950: a history and guide, Chapter 4*. University Park, Pa.: Pennsylvania State University Press, c2000.

Ross, Peter. *A History of Long Island*. New York: The Lewis Publishing Co., 1902.

Davis, Charles Homer, House
Name of Property

Suffolk County, New York
County and State

10. Geographical Data

Acreage of Property ± 2 acres

UTM References

(Place additional boundaries of the property on a continuation sheet.)

1 18 630160 4527870
Zone Easting Northing

2 18
Zone Easting Northing

3 18
Zone Easting Northing

4 18
Zone Easting Northing

See continuation sheet

Verbal Boundary Description

(Describe the boundaries of the property on a continuation sheet.)

Boundary Justification

(Explain why the boundaries were selected on a continuation sheet.)

11. Form Prepared By

name/title Steven Bedford, Ph.D., Architectural Historian
organization _____ date 30 November 2005
street & number 72 Cedar Street phone (860) 489-9908
city or town Hartford state CT zip code 06106

Additional Documentation

Submit the following items with the completed form:

Continuation Sheets

Maps

- A **USGS map** (7.5 or 15 minute series) indicating the property's location.
- A **Sketch map** for historic districts and properties having large acreage or numerous resources.

Photographs

Representative black and **white photographs** of the property.

Additional items

(Check with the SHPO or FPO for any additional items)

Property Owner

(Complete this item at the request of SHPO or FPO.)

name/title Linda & Stephen Meresman
street & number 381 West Neck Road telephone (631) 424-3428
city or town Lloyd Harbor state NY zip code 11743

Paperwork Reduction Act Statement: This information is being collected for applications to the National Register of Historic Places to nominate properties for listing or determine eligibility for listing, to list properties, and to amend existing listings. Response to this request is required to obtain a benefit in accordance with the National Historic Preservation Act, as amended (16 U.S.C. 470 *et seq.*).

Estimated Burden Statement: Public reporting burden for this form is estimated to average 18.1 hours per response including time for reviewing instructions, gathering and maintaining data, and completing and reviewing the form. Direct comments regarding this burden estimate or any aspect of this form to the Chief, Administrative Services Division, National Park Service, P.O. Box 37127, Washington, DC 20013-7127; and the Office of Management and Budget, Paperwork Reductions Projects (1024-0018), Washington, DC 20503.

Davis, Charles Homer, House
Suffolk County, New York

**NATIONAL REGISTER OF HISTORIC PLACES
CONTINUATION SHEET**

Section number 10 Page 1

VERBAL BOUNDARY DESCRIPTION

BEGINNING at a monument on the westerly side of West Neck Road distant 240.75 feet northerly from the corner formed by the intersection of the northerly side of Middle Hollow Road with the westerly side of West Neck Road; running thence south 52 degrees 0 minutes 40 seconds west, along said land 437.25 feet; thence the following three courses and distances through land north 41 degrees 19 minutes west, 221.19 feet; then north 50 degrees 50 minutes 50 seconds east, 123.59 feet to a stake; then north 61 degrees 41 minutes 50 seconds east, 299.15 feet to the westerly side of West Neck Road; thence along the westerly side of West Neck Road south 48 degrees 7 minutes 30 seconds east, 160.69 feet then south 51 degrees 36 minutes 50 seconds east, 15.38 feet to the monument at the point or place of BEGINNING.

SAID PREMISES being known as and by street number 381 West Neck Road, Lloyd Harbor, New York, as shown on the accompanying property map.

BOUNDARY JUSTIFICATION

Property boundary reflects the remaining historic estate that existed during the period of significance.

Davis, Charles Homer, House
Suffolk County, New York

**NATIONAL REGISTER OF HISTORIC PLACES
CONTINUATION SHEET**

Section number 11 Page 1

Edited by:

Virginia L. Bartos, Ph. D.
Historic Preservation Program Analyst
NYS OPRHP
Peebles Island State Park
PO Box 189
Waterford NY 12188
(518) 237-8643 ext. 3256

Davis, Charles Homer, House
Suffolk County, New York

**NATIONAL REGISTER OF HISTORIC PLACES
CONTINUATION SHEET**

Section number Page 1

PHOTOGRAPH LIST

Charles Homer Davis House, 381 West Neck Road, Village of Lloyd Harbor

Photographs taken by Virginia L. Bartos on 17 October 2005. Negatives on file in the offices of the Field Services Bureau of the New York State Office of Parks, Recreation and Historic Preservation, Peebles Island State Park, Waterford, New York.

Photo # 1: East Façade, view looking northwest.

Photo #2: North Façade, view looking southwest.

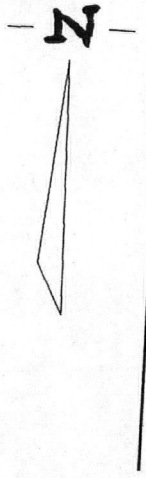
Photo #3: Tower/Southern Facade, view looking north.

Photo #4: West Façade, view looking east.

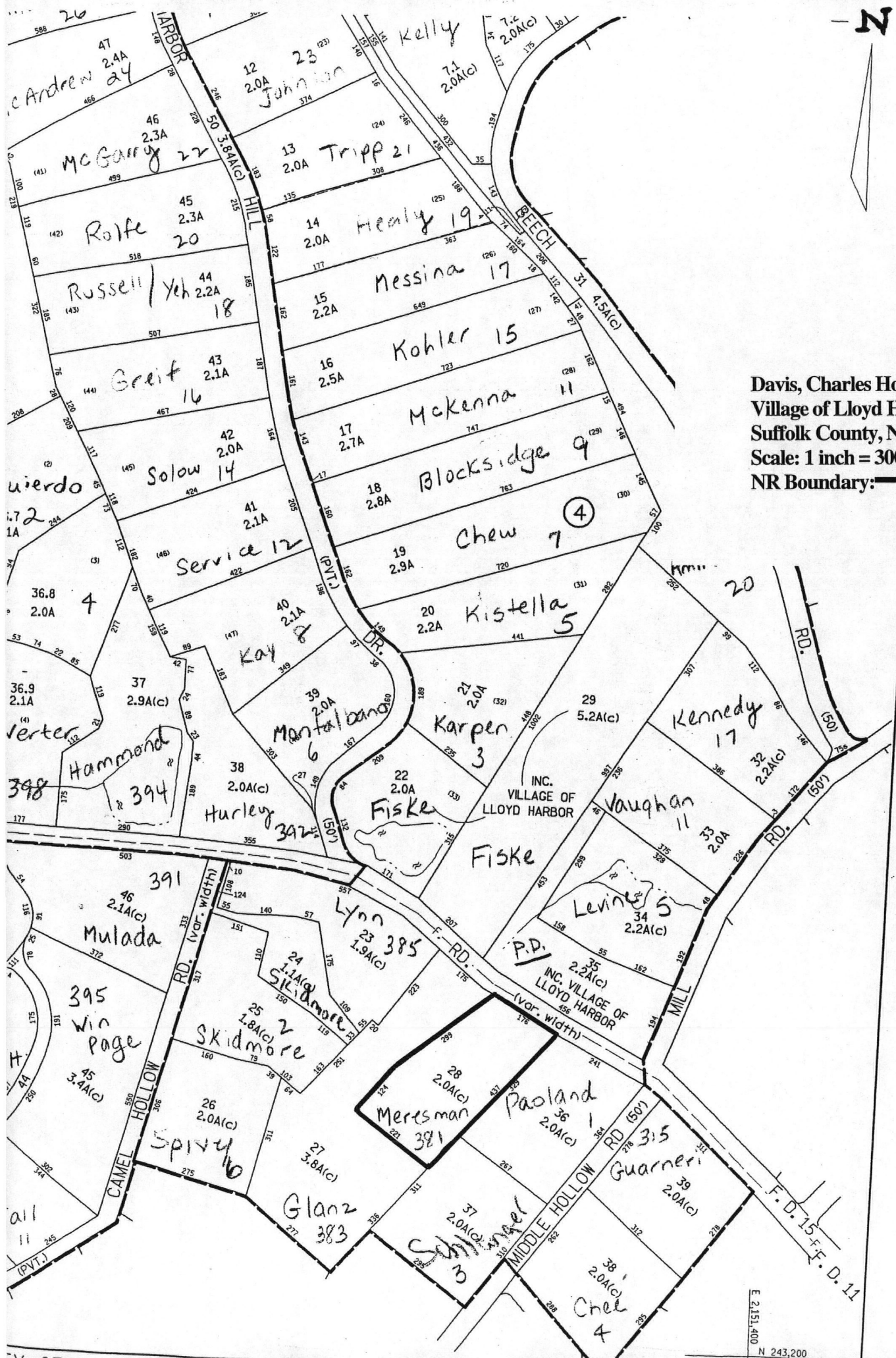
Photo #5: Interior view of southside parlors.

Photo #6: View of central hallway.

Photo #7: View of curved drive, looking toward West Neck Road.



Davis, Charles Homer, House
Village of Lloyd Harbor
Suffolk County, New York
Scale: 1 inch = 300 feet
NR Boundary: **_____**



E 2151,400
N 243,200

UNITED STATES DEPARTMENT OF THE INTERIOR
NATIONAL PARK SERVICE

NATIONAL REGISTER OF HISTORIC PLACES
EVALUATION/RETURN SHEET

REQUESTED ACTION: NOMINATION

PROPERTY Davis, Charles Homer, House
NAME:

MULTIPLE
NAME:

STATE & COUNTY: NEW YORK, Suffolk

DATE RECEIVED: 1/12/06 DATE OF PENDING LIST: 2/03/06
DATE OF 16TH DAY: 2/18/06 DATE OF 45TH DAY: 2/25/06
DATE OF WEEKLY LIST:

REFERENCE NUMBER: 06000057

REASONS FOR REVIEW:

APPEAL: N DATA PROBLEM: N LANDSCAPE: N LESS THAN 50 YEARS: N
OTHER: N PDIL: N PERIOD: N PROGRAM UNAPPROVED: N
REQUEST: N SAMPLE: N SLR DRAFT: N NATIONAL: N

COMMENT WAIVER: N

ACCEPT RETURN REJECT 2/22/06 DATE

ABSTRACT/SUMMARY COMMENTS:

Entered in the
National Register

RECOM./CRITERIA _____

REVIEWER _____ DISCIPLINE _____

TELEPHONE _____ DATE _____

DOCUMENTATION see attached comments Y/N see attached SLR Y/N

If a nomination is returned to the nominating authority, the nomination is no longer under consideration by the NPS.



DAVIS, CHARLES HOMER, HOME
VILLAGE OF LLOYD HARBOR
SUFFOLK COUNTY NY
PHOTO #1



DAVIS, CHARLES ADNER, HOUSE
Village of Lloyd Harbor
Suffolk County NY
Photo # 2



DAVIS, CHARLES HOMER, HOUSE
Village of Lloyd Harbor
Suffolk County NY
Photo # 3



DAVIS, CHARLES HOMER, HOUSE
Village of Lloyd Harbor
Suffolk County NY
Photo # H



DAVIS, CHARLES HOMER, HOUSE
Village of Lloyd Harbor
Suffolk County NY

Photo # 5



DAVIS, CHARLES HOMER, HOUSE
Village of Lloyd Harbor
Suffolk County NY

Photo # 6



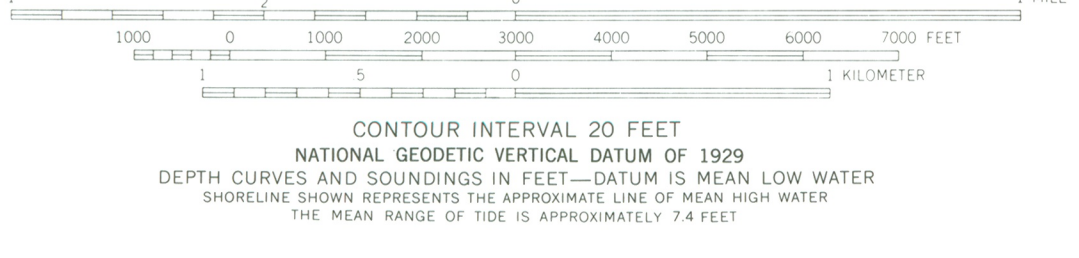
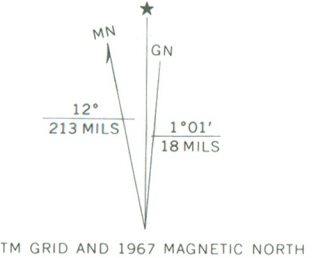
DAVIS, CHARLES HOMER, HOUSE
Village of Lloyd Harbor
Suffolk County NY

Photo # 17



DAVIS CHARLES HITEE HOUSE
VILLAGE OF LLOYD HARBOR
SUFFOLK COUNTY NY
LLOYD HARBOR ROAD
UTM REFERENCE:
18/630160/4527870

Mapped by the Army Map Service
Edited and published by the Geological Survey
Revised by the Geological Survey in cooperation with New York
Department of Transportation
Control by USGS, USCGS and USCE
Topography by planetable surveys 1931-1932.
Revised from aerial photographs taken 1966. Field checked 1967
Selected hydrographic data compiled from USCGS Charts 221
and 224 (1967). This information is not intended for navigational purposes
Polyconic projection. 1927 North American datum
10,000-foot grids based on New York coordinate system, Long Island zone,
and Connecticut coordinate system
1000-meter Universal Transverse Mercator grid ticks, zone 18,
shown in blue
Red tint indicates areas in which only landmark buildings are shown



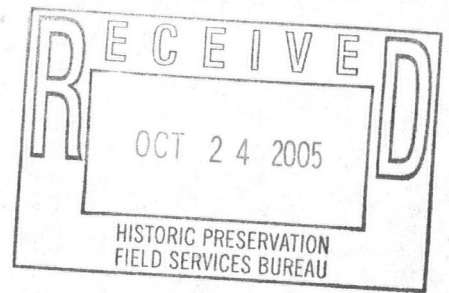
ROAD CLASSIFICATION

Heavy-duty	Light-duty
Medium-duty	Unimproved dirt
	State Route

THIS MAP COMPLIES WITH NATIONAL MAP ACCURACY STANDARDS
FOR SALE BY U.S. GEOLOGICAL SURVEY
DENVER, COLORADO 80225, OR RESTON, VIRGINIA 22092
A FOLDER DESCRIBING TOPOGRAPHIC MAPS AND SYMBOLS IS AVAILABLE ON REQUEST

To place on the predicted North American Datum 1983
move the projection lines 6 meters south and
36 meters west as shown by dashed corner ticks

LLOYD HARBOR, N. Y. - CONN.
NW/4 NORTHPORT 15' QUADRANGLE
40073H4-TF-024
1967
DMA 6365 IV NW - SERIES V821



STATEMENT OF OWNER SUPPORT

Before an individual nomination proposal will be reviewed or nominated, the owner(s) of record must sign and date the following statement:

^{we} Linda S. + Stephen E. Meresman ^{are} ~~am~~ the owners of the property at
(print or type owner name)

381 West Neck Rd., Lloyd Harbor, NY 11743
(street number and name, city, village or town, state of nominated property)

^{we} support its consideration and inclusion in the State and National Registers of Historic Places.

Linda S. Meresman Stephen E. Meresman 10/19/05
(signature and date)

381 West Neck Road
Lloyd Harbor, N.Y. 11743

(mailing address)