

1379

United States Department of the Interior  
National Park Service

National Register of Historic Places  
Registration Form

This form is for use in nominating or requesting determinations for individual properties and districts. See instructions in *How to Complete the National Register of Historic Places Registration Form* (National Register Bulletin 16A). Complete each item by marking "x" in the appropriate box or by entering the information requested. If an item does not apply to the property being documented, enter "N/A" for "not applicable." For functions, architectural classification, materials, and areas of significance, enter only categories and subcategories from the instructions. Place additional entries and narrative items on continuation sheets (NPS Form 10-900a). Use a typewriter, word processor, or computer, to complete all items.

1. Name of Property

historic name Entranceways at Main Street at Lamarck Drive and Smallwood Drive

other name/site number \_\_\_\_\_

2. Location

street & town Main Street at Lamarck Drive and Smallwood Drive  not for publication

city or town Town of Amherst  vicinity

state New York code NY county Erie County code 029 zip code 14226

3. State/Federal Agency Certification

As the designated authority under the National Historic Preservation Act, as amended, I hereby certify that this  nomination  request for determination of eligibility meets the documentation standards for registering properties in the National Register of Historic Places and meets the procedural and professional requirements set forth in 36 CFR Part 60. In my opinion, the property  meets  does not meet the National Register criteria. I recommend that this property be considered significant  nationally  statewide  locally. ( See continuation sheet for additional comments.)

M. J. Callahan, SA Signature of certifying official/Title 10/08/05 Date

State of Federal agency and bureau \_\_\_\_\_

In my opinion, the property  meets  does not meet the National Register criteria. ( See continuation sheet for additional comments.)

Signature of certifying official/Title \_\_\_\_\_ Date \_\_\_\_\_

State or Federal agency and bureau \_\_\_\_\_

4. National Park Service Certification

I hereby certify that the property is:

- entered in the National Register.  See continuation sheet.
- determined eligible for the National Register  See continuation sheet.
- determined not eligible for the National Register.
- removed from the National Register.
- other, (explain): \_\_\_\_\_

Edson H. Beall Signature of the Keeper 12.7.05 Date of Action

**5. Classification**

**Ownership of Property**  
(check as many boxes as apply)

**Category of Property**  
(check only one box)

**Number of Resources within Property**  
(Do not include previously listed resources in the count.)

- public-local
- private
- public-State
- public-Federal

- district
- building(s)
- site
- structure
- object

Contributing	Noncontributing	
_____	_____	buildings
_____	_____	sites
2	_____	structures
_____	_____	objects
2	_____	Total

**Name of related multiple property listing**  
(Enter "N/A" if property is not part of a multiple property listing.)

**Number of contributing resources previously listed in the National Register**

Multiple Resources Associated with the Suburban Development of Buffalo, N. Y.      N/A

**6. Function or Use**

**Historic Function**  
(Enter categories from instructions)

**Current Function**  
(Enter categories from instructions)

LANDSCAPE/Street Furniture  
\_\_\_\_\_  
\_\_\_\_\_  
\_\_\_\_\_  
\_\_\_\_\_  
\_\_\_\_\_  
\_\_\_\_\_  
\_\_\_\_\_

LANDSCAPE/Street Furniture  
\_\_\_\_\_  
\_\_\_\_\_  
\_\_\_\_\_  
\_\_\_\_\_  
\_\_\_\_\_  
\_\_\_\_\_  
\_\_\_\_\_

**7. Description**

**Architectural Classification**  
(Enter categories from instructions)

**Materials**  
(Enter categories from instructions)

Late 19<sup>th</sup> and Early 20<sup>th</sup> Century Revivals/Tudor Revival  
\_\_\_\_\_  
\_\_\_\_\_

foundation      stone

walls              Random Ashlar Stone

roof                Standing Seam Copper

other               Cut metal sign posts,westhervanes  
Original light fixtures

**Narrative Description**

(Describe the historic and current condition of the property on one or more continuation sheets.)

Entranceway at Main Street at Lamarck Drive and Smallwood Drive  
Erie County, New York  
Multiple Resources Associated with the Suburban Development of Buffalo, New York

**United States Department of the Interior National Park Service**

**NATIONAL REGISTER OF HISTORIC PLACES  
CONTINUATION SHEET**

Section 7 Page 1

---

**NARRATIVE DESCRIPTION**

The nominated resource is a set of complementary suburban residential subdivision entranceways, located on the north and south side of Main Street (New York Route 5) at Smallwood Drive and Lamarck Drive in the Town of Amherst, NY. The surrounding area has residential subdivisions built in the 1920's on the four-lane Main Street (formerly Williamsville Road) in Snyder, between the nearby communities of Williamsville and Eggertsville in the Buffalo suburb of Amherst. The immediate surroundings include large lawn areas of the adjacent residences behind these entranceways.

The entranceway at Main Street at Lamarck Drive is made up of two symmetric groupings of stone structures set on either side of the drive. Each is dominated by a tall, capped, stone post topped with a large, cut metal pictorial sign, with flanking stone half-walls, engaged to form a subtly Y-shaped plan that is oriented outward, parallel to Lamarck Drive. Corresponding stone half-walls that are U-shaped in plan form a square area through which new concrete sidewalks run along Lamarck Drive. The design has appreciable early 20<sup>th</sup> century Tudor Revival influences associated with suburban residential subdivisions of the period. The entranceway is in fair condition.

The approximately 4 foot by 4 foot by 12 foot high posts and 4 foot high half-walls are of quarry-faced random ashlar limestone stonework on a cut and smooth finished chamfered stone base. The posts have chamfered edges. Several contrasting tan- and brown-colored cut granite blocks are randomly located on the posts and are located at the top mid-points of the half-walls. The half-walls are coped with recently installed rectangular cut and finished stone slabs with rough cut edges projecting over the half-walls. The posts are capped with an octagonal pyramid of three successively smaller cast concrete courses with slightly flared projecting edges. Original, hexagonal metal and glass light fixtures are hung on the Main Street faces of the posts from metal hooks. Only the hooks remain on the Lamarck Drive faces.

The signs, parallel with Main Street, are fixed, approximately 11 foot long by 3 ½ foot high, painted metal panels cut out to depict scenes in silhouette. Notably the two neither match nor mirror each other. A Native American domestic scene of two trees, two teepees, a camp fire with trestle, and two figures carrying a deer suspended from a pole are portrayed on the west sign. A two-story, Tudor Revival-styled house with a central two-story front gable with a large arched Tudor entry, hipped side wing with windowed walls on one side, and arcade on the other that reduces to a solid wooden garden fence with two arched openings on either side of four poplar trees is portrayed on the east sign. The signs are braced from below by filigree metal brackets.

The entranceway at Main Street at Smallwood Drive is comprised of two symmetric groupings of stone gatehouses and posts set on either side of the drive, oriented toward Main Street. Each is dominated by an octagonal gatehouse structure formed by four pairs of stained heavy timber columns that rest on quarry-faced random ashlar half-walls on cut stone, chamfered bases, which flank the concrete public sidewalk running parallel to Smallwood Drive on the centerline of the gatehouse; the Main Street sidewalk runs in front of the gatehouses. The heavy timber columns are braced with pegged heavy timber brackets that support a heavy timber lintel on the open sides and that form a lancet-head arch on the other sides. The steeply pitched and flared, standing seam copper roofs topped with weathervanes depicting flying birds rise to a height of nearly two stories.

On the Smallwood Drive sides of the gatehouses stand tall, slightly tapered, quarry-faced random ashlar stone posts with chamfered corners on cut-stone bases and that are topped with flat cast concrete capitals on which sit wrought iron balustrades with filigreed corners. Original, hexagonal metal and glass light fixtures are hung on the Smallwood Drive faces of the posts from metal brackets. Again, the design has appreciable early 20<sup>th</sup> century Tudor Revival influences associated with suburban residential subdivisions of the period.

Entranceway at Main Street at Lamarck Drive and Smallwood Drive  
Erie County, New York  
Multiple Resources Associated with the Suburban Development of Buffalo, New York

**United States Department of the Interior National Park Service**

**NATIONAL REGISTER OF HISTORIC PLACES  
CONTINUATION SHEET**

Section 7 Page 2

---

The entranceway ensemble has historic integrity in terms of location, design, setting, materials, workmanship, feeling, and association, and is in fair condition, despite observable changes in light fixture installations and some badly executed repairs. These entranceways are in their original location, are of original design, setting, and materials, and are serving their original function of marking the vehicle and pedestrian entrance to a residential subdivision, and in the case of the Smallwood entrance, providing shelter for transit commuters. The nearby residences are original, the only known change in the original setting being the widening of Main Street in the late 1920's.

These entranceways were built circa 1926 by prominent area builder/developer Charles S. Burkhardt who had purchased land for early developments in the Town of Amherst to create residential subdivisions, including Audubon Terrace and Audubon Terrace South, for which these entranceways were constructed.

**8. Significance**

**Applicable National Register Criteria**

(Mark "x" in one or more boxes for the criteria qualifying the property for National Register listing.)

- A** Property is associated with events that have made a significant contribution to the broad patterns of our history.
- B** Property is associated with the lives of persons significant in our past.
- C** Property embodies the distinctive characteristics of a type, period, or method of construction or represents the work of a master, or possesses high artistic values, or represents a significant and distinguishable entity whose components lack individual distinction.
- D** Property has yielded, or is likely to yield, information important in prehistory or history.

**Criteria Considerations**

(Mark "x" in all the boxes that apply.)

Property is:

- A** owned by a religious institution or used for religious purposes.
- B** removed from its original location.
- C** a birthplace or grave.
- D** a cemetery.
- E** a reconstructed building, object, or structure.
- F** a commemorative property.
- G** less than 50 years of age or achieved significance within the past 50 years.

**Narrative Statement of Significance**

(Explain the significance of the property on one or more continuation sheets.)

**Areas of Significance**

(enter categories from instructions)

ARCHITECTURE

COMMUNITY PLANNING AND DEVELOPMENT

LANDSCAPE ARCHITECTURE

**Period of Significance**

Ca. 1926-1955

**Significant Dates**

Ca. 1926

**Significant Persons**

(Complete if Criterion B is marked above)

N/A

**Cultural Affiliation**

N/A

**Architect/Builder**

Charles S. Burkhardt, Developer

**9. Major Bibliographical References**

**Bibliography**

(Cite the books, articles, and other sources used in preparing this form on one or more continuation sheets.)

**Previous documentation on file (NPS):**

- preliminary determination of individual listing (36 CFR 67) has been requested
- previously listed in the National Register
- previously determined eligible by the National Register
- designated a National Historic Landmark
- recorded by Historic American Buildings Survey # \_\_\_\_\_
- recorded by Historic American Engineering Record # \_\_\_\_\_

**Primary location of additional data:**

- State Historic Preservation Office
- Other State agency
- Federal agency
- Local government
- University
- Other Name of repository: \_\_\_\_\_

Entranceway at Main Street at Lamarck Drive and Smallwood Drive  
Erie County, New York  
Multiple Resources Associated with the Suburban Development of Buffalo, New York

**United States Department of the Interior National Park Service**

**NATIONAL REGISTER OF HISTORIC PLACES  
CONTINUATION SHEET**

Section 8 Page 1

---

**NARRATIVE STATEMENT OF SIGNIFICANCE**

The entranceways at Main Street at Lamarck Drive in the Town of Amherst, NY is significant under Criterion A and Criterion C as intact, relatively rare, early twentieth-century Tudor Revival-style suburban residential subdivision entranceways associated with the local historical development of the once-rural Town of Amherst into a residential suburb community of the city of Buffalo, and the national historic development of suburbanization, with the transformation of the rural landscape into suburban estates and residential subdivisions through the process of land development associated with modes of transportation on the edges of cities.

These entranceways are part of a thematic grouping of entranceways and street furniture including stone walls and signposts along the Main Street (New York Route 5) corridor that is associated with the creation of early twentieth-century suburban estates and residential subdivisions. Developers built these entranceways in the 1920's to advertise their development as a "desirable location," "where homes of character are being built," and as "the most desirable place for discriminating Buffalonians to reside in," as newspaper advertisements and builders stated at the time. Increased mobility by means of railroads, trolleys, and automobiles into the formerly rural Town of Amherst from the industrialized city of Buffalo to the south facilitated access and growth.

The nominated resource is a set of complementary suburban residential subdivision entranceways, located on the north and south side of Main Street (New York Route 5) at Smallwood Drive and Lamarck Drive in the Town of Amherst, NY. The entranceway at Main Street at Smallwood Drive is dominated by octagonal gatehouse structures, and it is likely that they provided shelter as people waited for the electric trolleys to and from Buffalo. The entranceway at Main Street at Lamarck Drive consists of a pair of tall stone posts and corresponding stone half-walls, which offered no shelter, yet still effectively denoted the development. Built circa 1926, both designs have appreciable early 20<sup>th</sup> century Tudor Revival influences associated with suburban residential subdivisions of the period, in particular Audubon Terrace and Audubon Terrace South for which they were built. Their natural, durable, and simple materials were intended to reflect the qualities of the projected subdivisions behind them, and their stylistic references reflect the popularity of eclecticism. The structures presence and style also speaks to the need to clearly mark these sites as cultured settlements. This theme is touched on in the design of the sign panels at Lamarck Drive which tell a romanticized story about the "civilization" and domestication of the untamed aboriginal land.

Audubon Terrace South was created by prominent area developer Charles S. Burkhardt who had purchased land for early developments in the Williamsville area where he had moved to create residential subdivisions after starting his development career in Buffalo. The designers of the entranceway have not been determined. The entranceway at Main Street at Smallwood Drive may have been built by Trayfield Corporation (per Fox, A. Erie County's Architectural Legacy). The entranceway at Main Street at Lamarck Drive may have been designed by the James W. Kideney, the principal architect associated with the Burkhardt Company.

The Main Street and Lamarck Drive entranceway represents the opening to the suburban residential subdivision of Audubon Terrace South in the Town of Amherst north of the City of Buffalo that transformed a local rural landscape into a twentieth-century community. It also represents the broader concurrent course of such transformation throughout the nation as the development of transportation modes facilitated the freedom for most Americans to choose where they lived distinct from where they worked. The architecture of this entranceway not only heralded a new way of living in Audubon Terrace – "the Queen City (Buffalo) is indeed fortunate in having this country charm at her doorsteps" a community of "wide-awake and progressive citizens who will profit in body, mind, and purse by the acquisition of parcels of nature's favored soil", as *Audubon Topics* put it - it heralded a new way of living in an American community.

**United States Department of the Interior  
National Park Service**

Entranceways at Main St. at Lamarck and Smallwood Drives  
Erie County, New York

**REGISTER NATIONAL OF HISTORIC PLACES  
CONTINUATION SHEET**

Section 9 Page 1

---

**Bibliography**

Audubon Terrace. Promotional Booklet by Burkhardt Co., with photographs and maps of early stages of the development.

"Audubon Topics." Monthly newsletter published by Chas S Burkhardt Company for Audubon Terrace residents, 1926-27.

Bero Associates Architects. "Intensive level survey of Historic Resources, Town of Amherst, Erie County, New York." August 6, 1998.

"Burkhardt Co. Developers of vast Audubon Terrace Tract." *Buffalo Times*. October 30, 1927.

Charles Burkhardt Obituary. *Amherst Bee*. February 28, 1946.

Duax, Caroline. "Landmark Designation Application Form." 2002.

Eggertsville – Snyder Map. *Sanborn Map Co.* 1923 and 1932.

Englert, Robert T. "Browncroft Historic District National Register Nomination." 2003.

Grande, Joseph A. *Glancing back: A Pictorial History of Amherst, New York*. Virginia Beach, Virginia: Donning Company Publishers. 2000.

Grande, Joseph A. *Images of America, Amherst*. Charleston, South Carolina: Arcadia Publishing. 2004.

"Historic Residential Suburbs." *National Register Bulletin*. Washington D.C.: U.S. Department of the Interior National Park Service, 2002.

"Leadership by right of our Accomplishments." *Buffalo Times*. October 30, 1927.

McAlester, Virginia & Lee. *A Field Guide to American Houses*. New York: Alfred A. Knoph, 2000.

"Map of Subdivisions of Amherst." *Buffalo Times*. October 30, 1927.

"Part of Main Street Will Be Widened to Sixty Feet." *Buffalo-Courier Express*, September 5, 1935.

Town of Amherst:

Engineering department  
Planning Department  
Assessor's Office  
Archival Center

Others:

Amherst Museum  
Buffalo and Erie County Public Library

---

## 10. Geographical Data

---

Acreage of Property less than one acre

### UTM References

(Place additional boundaries of the property on a continuation sheet.)

1 17 681520 4758610  
Zone Easting Northing

2  
Zone Easting Northing

3  
Zone Easting Northing

4  
Zone Easting Northing

See continuation sheet

### Verbal Boundary Description

(Describe the boundaries of the property on a continuation sheet.)

### Boundary Justification

(Explain why the boundaries were selected on a continuation sheet.)

---

## 11. Form Prepared By

---

name/title Claire L.. Ross, Program Analyst (Consultant Clinton Brown, see contiuation sheet)

organization NYS Office of Parks, Recreation and Historic Preservation date August 15, 2005

street & number Peebles Island, P. O. Box 189 telephone 518-237-8643

city or town Waterford state NY zip code 12188

---

## Additional Documentation

---

Submit the following items with the completed form:

### Continuation Sheets

### Maps

A **USGS map** (7.5 or 15 minute series) indicating the property's location.

A **Sketch map** for historic districts and properties having large acreage or numerous resources.

### Photographs

Representative black and **white photographs** of the property.

### Additional items

(Check with the SHPO or FPO for any additional items)

---

## Property Owner

---

(Complete this item at the request of SHPO or FPO.)

name/title Susan J. Gerlick, Supervisor, Town of Amherst

street & number 5583 Main Street telephone 716-631-7000

city or town Williamsville state N. Y. zip code 14221

---

**Paperwork Reduction Act Statement:** This information is being collected for applications to the National Register of Historic Places to nominate properties for listing or determine eligibility for listing, to list properties, and to amend existing listings. Response to this request is required to obtain a benefit in accordance with the National Historic Preservation Act, as amended (16 U.S.C. 470 *et seq.*).

**Estimated Burden Statement:** Public reporting burden for this form is estimated to average 18.1 hours per response including time for reviewing instructions, gathering and maintaining data, and completing and reviewing the form. Direct comments regarding this burden estimate or any aspect of this form to the Chief, Administrative Services Division, National Park Service, P.O. Box 37127, Washington, DC 20013-7127; and the Office of Management and Budget, Paperwork Reductions Projects (1024-0018), Washington, DC 20503.

*Entranceways at Main St. at Lamarck and Smallwood Drives  
Erie County, New York*

**NATIONAL REGISTER OF HISTORIC PLACES  
CONTINUATION SHEET**

Section number 10 Page 1

---

**Geographical Data:**

Verbal Boundary Description:

The nominated property at Main Street, Lamarck Drive and Smallwood Drive, includes stone entranceway structures and a plot of land extending approximately two feet beyond the structures within the Town of Amherst right-of-way and New York State Route 5 (Main Street) right-of-way. The boundary has been drawn to include the four sets of stone entranceways, forming a rectangle, which crosses Main Street. The boundary for the nomination has been drawn to coincide with the Town of Amherst map with an approximate scale: 1" to 20'. A heavy black line on the accompanying map provided by the Town of Amherst shows the nominated plot.

Boundary Justification:

The boundary of the nominated property has been drawn to reflect the significance of the structures at the four corners of this intersection as a historic unit. The structures at these corners are contained within a minimal rectangle and reflect the complete extent of this historic resource during its construction and period of significance.



# TOWN OF AMHERST

## ENGINEERING DEPARTMENT

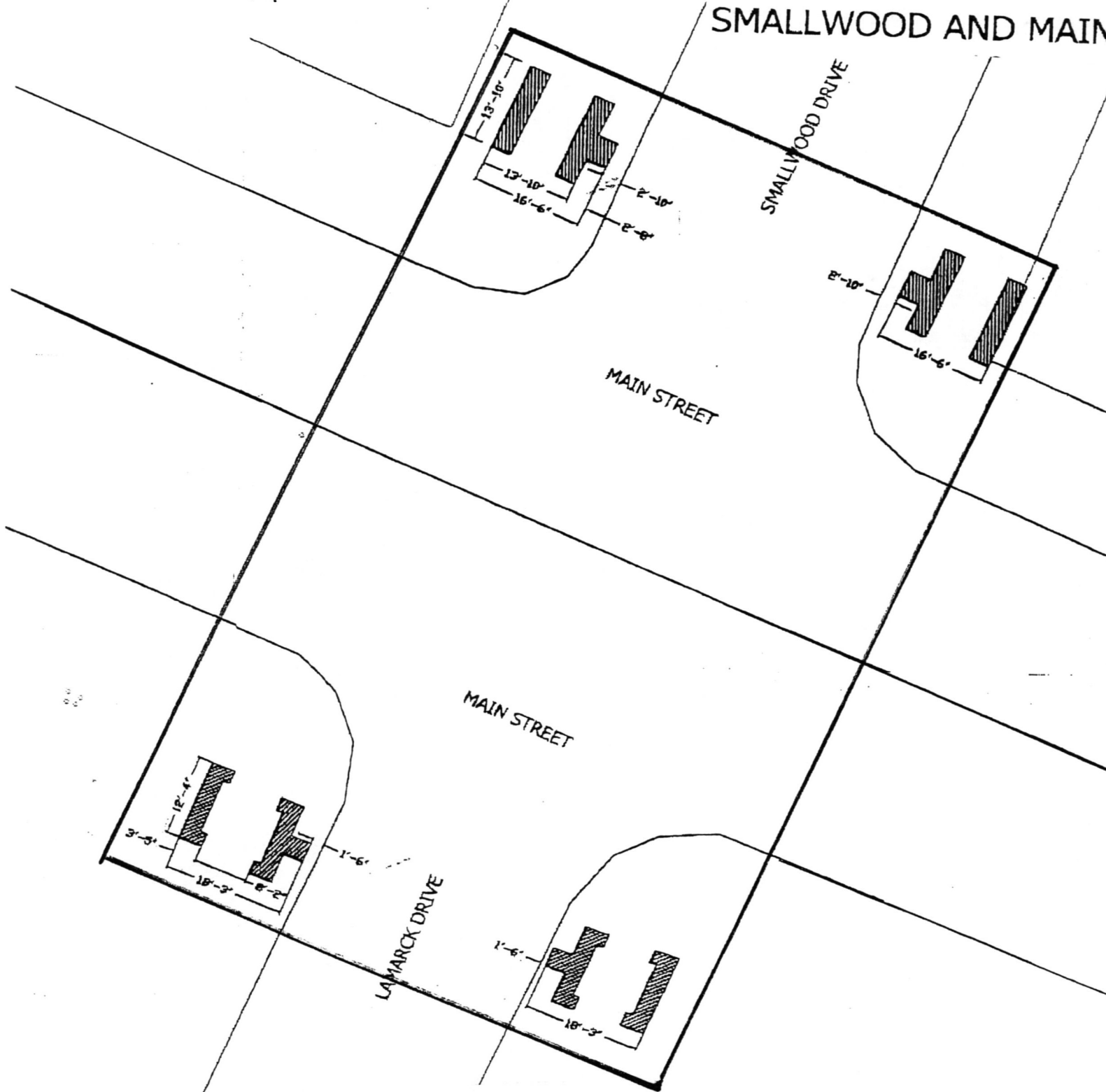
1100 NORTH FOREST ROAD  
WILLIAMSVILLE, NEW YORK 14221

PHONE: (716) 631-7154  
FAX: (716) 631-7222

PAUL M. BOWERS, P.E., DEE - TOWN ENGINEER



### SMALLWOOD AND MAIN



### LAMARCK AND MAIN

*Entranceways at Main St. at Lamarck and Smallwood Drives  
Erie County, New York*

**NATIONAL REGISTER OF HISTORIC PLACES  
CONTINUATION SHEET**

Section number 11 Form Prepared By Page 1

---

National Register Nomination Form Prepared by:

Clinton E. Brown, RA, AIA  
Clinton Brown Architecture, pc  
2100 Rand Building  
14 Lafayette Square  
Buffalo, New York 14203

*Entranceways at Main St. at Lamarck and Smallwood Drives  
Erie County, New York*

**NATIONAL REGISTER OF HISTORIC PLACES  
CONTINUATION SHEET**

Section number PHOTOGRAPHS Page 1

---

Name of Property: Entranceways at Main St. at Lamarck and Smallwood Drives

Location, County, State: Main Street at intersections with Lamarck and Smallwood Drives

Photographs by: name, year, address: SHPO Staff, June 30, 2005

Negatives at: address: SHPO, Peebles Island, P. O. Box 189, Waterford, New York 12188

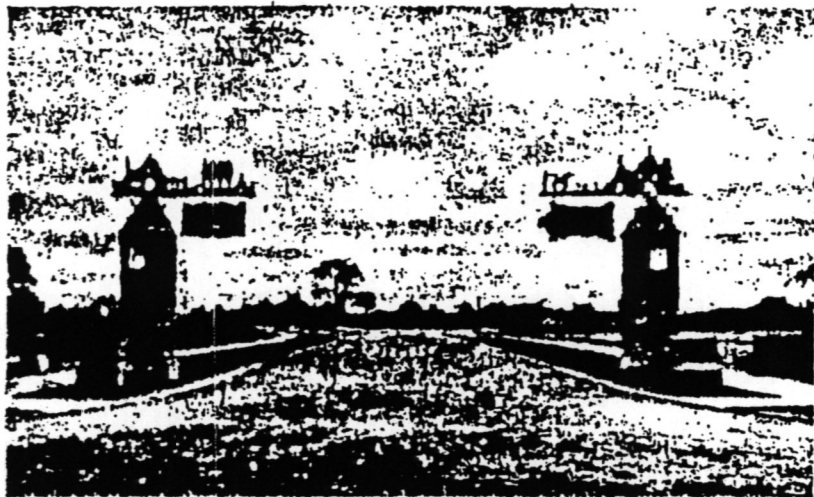
Key to Photographs:
---------------------

1. View looking at Lamarck Drive entranceway from the north side of Main Street.
2. View looking at Smallwood Drive entranceway from the north-west side of Main Street.
3. View looking from Smallwood Drive, showing Smallwood and Lamarck entranceways.

Entranceway at Main Street at Lamarck Drive and Smallwood Drive  
Erie County, New York  
Multiple Resources Associated with the Suburban Development of Buffalo, New York

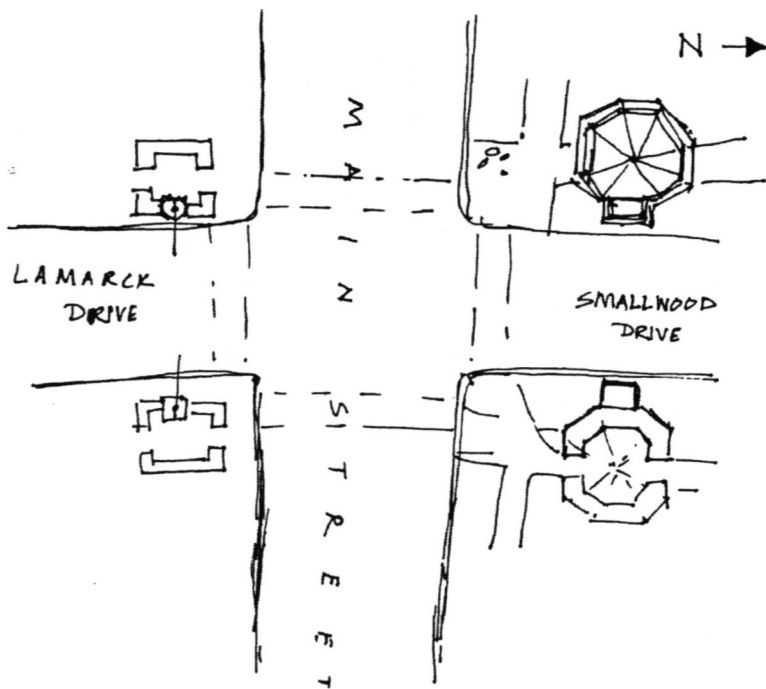
United States Department of the Interior National Park Service

NATIONAL REGISTER OF HISTORIC PLACES  
CONTINUATION SHEET



The View Through the Lamarck Drive Gates

Lamarck Drive Entranceway, Audubon Topics. 1926.



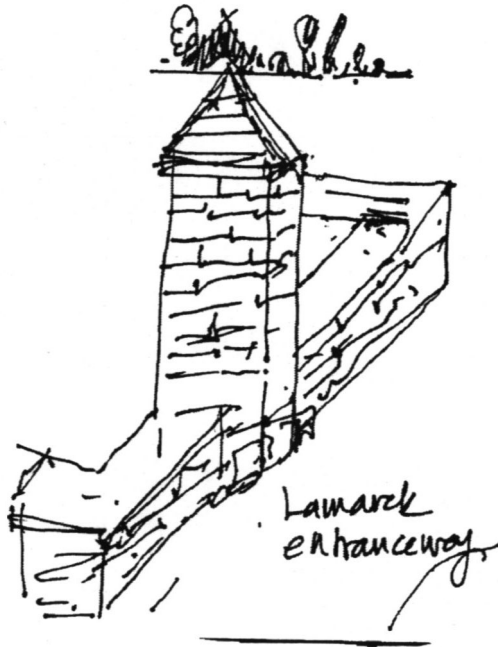
Sketch Map showing layout of intersection at Main Street and Lamarck Drive and Smallwood Drive.

Entranceway at Main Street at Lamarck Drive and Smallwood Drive  
Erie County, New York  
Multiple Resources Associated with the Suburban Development of Buffalo, New York

**United States Department of the Interior National Park Service**

**NATIONAL REGISTER OF HISTORIC PLACES  
CONTINUATION SHEET**

Page 2



Sketch showing Entranceway at Main Street at Lamarck Drive.



Sketch showing Entranceway at Main Street at Smallwood Drive.

UNITED STATES DEPARTMENT OF THE INTERIOR  
NATIONAL PARK SERVICE

NATIONAL REGISTER OF HISTORIC PLACES  
EVALUATION/RETURN SHEET

REQUESTED ACTION: NOMINATION

PROPERTY NAME: Entranceways at Main Street at Lamarck Drive and Smallwood Drive

MULTIPLE NAME: Suburban Development of Buffalo, New York MPS

STATE & COUNTY: NEW YORK, Erie

DATE RECEIVED: 10/28/05      DATE OF PENDING LIST: 11/21/05  
DATE OF 16TH DAY: 12/06/05      DATE OF 45TH DAY: 12/11/05  
DATE OF WEEKLY LIST:

REFERENCE NUMBER: 05001379

REASONS FOR REVIEW:

APPEAL: N    DATA PROBLEM: N    LANDSCAPE: N    LESS THAN 50 YEARS: N  
OTHER: N    PDIL: N    PERIOD: N    PROGRAM UNAPPROVED: N  
REQUEST: N    SAMPLE: N    SLR DRAFT: N    NATIONAL: N

COMMENT WAIVER: N

ACCEPT     RETURN     REJECT    12.7.05 DATE

ABSTRACT/SUMMARY COMMENTS: Entered in the National Register

RECOM./CRITERIA \_\_\_\_\_

REVIEWER \_\_\_\_\_ DISCIPLINE \_\_\_\_\_

TELEPHONE \_\_\_\_\_ DATE \_\_\_\_\_

DOCUMENTATION see attached comments Y/N see attached SLR Y/N

If a nomination is returned to the nominating authority, the nomination is no longer under consideration by the NPS.



MRA with the Suburban Development  
of Buffalo, New York

Entrance Ways at Main Street at Lamanck  
and Smallwood Drives

Town of Amherst, Erie County, N.Y.

Photo by: SHPO Staff, June 30, 2005  
Neg. at: SHPO, Peckles Island, Box 189,  
Walsh Island, N.Y. 12188

View: looking at Lamanck Drive  
Entrance Way from north side of Main St



MRA with the Suburban Development  
of Buffalo, New York

Entrance ways at Main Street at  
Lamanck and Smallwood Drive

Town of Amherst, Erie County, N.Y.

Photo by: SHPO Staff, June 30, 2005

Neg # : SHPO Reehley Island, P.O. Box  
189, Waterford, N.Y. 12188

2  
View: looking at Smallwood Drive  
entrance way from north-west side of Main St.



MRA with Suburban Development  
of Buffalo, New York

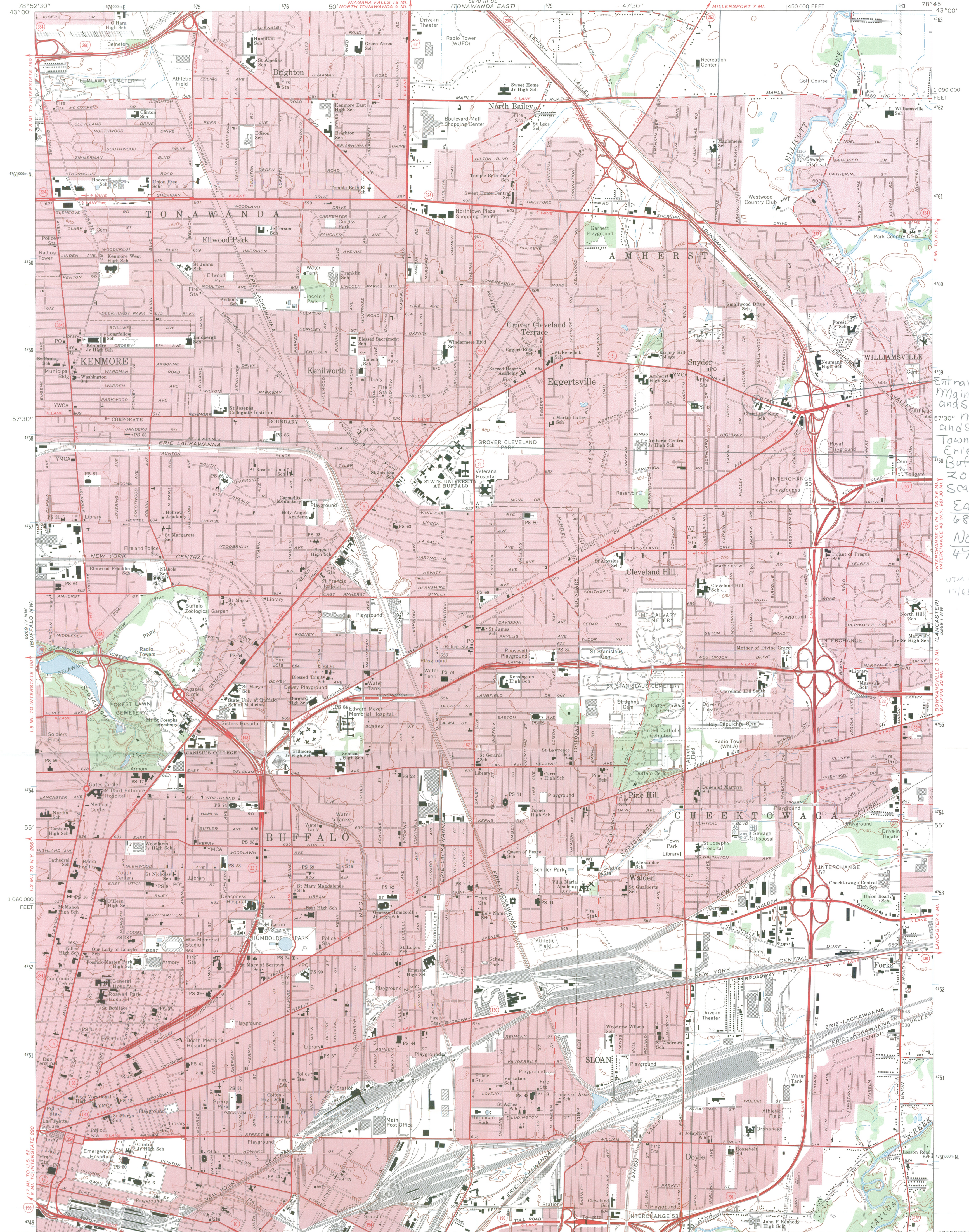
Entranceways at Main Street at  
Lamarck and Smallwood Avenue

Town of Amherst, Erie County, N. Y.

Photoby: SHPO staff, June 30, 2005

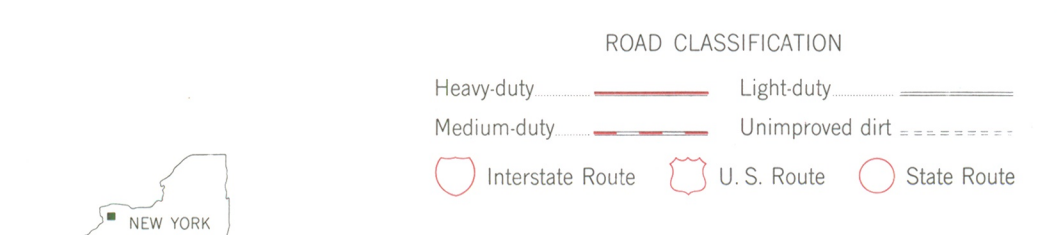
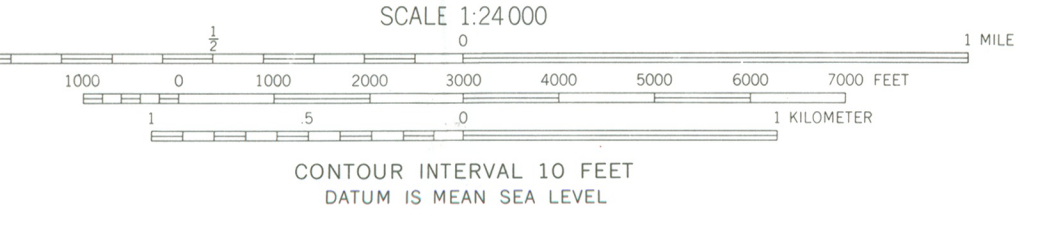
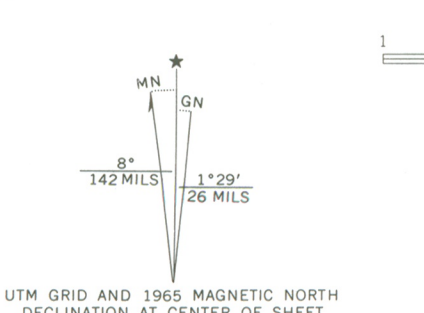
Neg # : SHPO, Peckles Island. P.O. Box 189,  
3 Walpole N. Y. 12188

View looking south from Smallwood  
Avenue, showing Smallwood and  
Lamarck entranceways



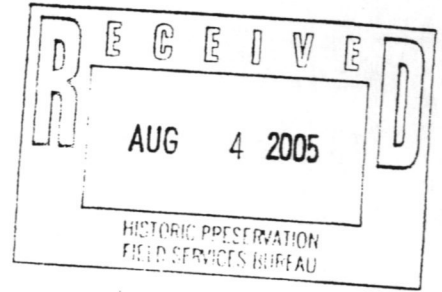
Entrance ways at  
Main St. at Lamarck  
and Smallwood Drives  
57°30' Main St. at Lamarck  
and Smallwood Drives  
Town of Amherst,  
Erie County, N.Y.  
Buffalo N.E. Quad  
Zone 17  
Scale: 1:24,000  
Easting  
681520  
Northing  
4758610  
UTM correction 1/1/08  
17681522/4758827

Mapped, edited, and published by the Geological Survey  
in cooperation with New York Department of Public Works  
Control by USGS, USC&GS, USCE, and U.S. Lake Survey  
Planimetry compiled by U.S. Corps of Engineers from  
aerial photographs taken 1942. Topography by  
planetable surveys 1948. Revised 1965  
Polyconic projection. 1927 North American datum  
10,000-foot grid based on New York coordinate system, west zone  
1000-meter Universal Transverse Mercator grid ticks,  
zone 17, shown in blue  
Red tint indicates areas in which only landmark buildings are shown



BUFFALO NE, N. Y.  
NE/4 BUFFALO 15' QUADRANGLE  
N4252.5-W7845.7.5  
1965  
AMS 5269 IV NE-SERIES V821

THIS MAP COMPLIES WITH NATIONAL MAP ACCURACY STANDARDS  
FOR SALE BY U.S. GEOLOGICAL SURVEY, WASHINGTON, D. C. 20242  
A FOLDER DESCRIBING TOPOGRAPHIC MAPS AND SYMBOLS IS AVAILABLE ON REQUEST



STATEMENT OF OWNER SUPPORT

Before an individual nomination proposal will be reviewed or nominated, the owner(s) of record must sign and date the following statement:

I, Susan J. Grelick, am the owner of the property at  
(print or type owner name)  
Entranceway at Main Street at Lamarck Drive and Smallwood Drive  
Entranceway at Main Street at Roycroft Boulevard; Amherst NY  
(street number and name, city, village or town, state of nominated property)

I support its consideration and inclusion in the State and National Registers of Historic Places.

Susan J. Grelick 7/25/05  
(signature and date)

5583 Main Street

Williamsville, NY 14221

\_\_\_\_\_  
(mailing address)



# TOWN OF AMHERST

## ERIE COUNTY, NEW YORK

5583 MAIN STREET  
WILLIAMSVILLE, NEW YORK 14221  
PHONE: 716-631-7013  
FAX 716-631-7036  
www.amherst.ny.us

SUSAN J. GRELICK  
Supervisor  
716-631-7032

SUSAN K. JAROS  
Town Clerk  
716-631-7045

MICHAEL G. MCGUIRE  
Deputy Supervisor and Councilmember

Councilmembers:  
WILLIAM L. KINDEL  
WILLIAM A. O'LOUGHLIN, JR.  
SHELLY SCHRATZ  
DANIEL J. WARD  
JANE S. WOODWARD

September 12, 2005

NYS Office of Parks, Recreation and Historic Preservation  
Field Service Bureau  
Peebles Island  
P.O. Box 189  
Waterford, NY 12188-0189

ATTN: Ms. Claire Ross

SUBJECT: Entranceways at Main Street at Lamarck Drive and Smallwood Drive  
Entranceway at Main Street at Roycroft Boulevard

Dear Ms. Ross:

As Chief Municipal Officer of the Town of Amherst, I am writing to concur with the Amherst Historic Preservation Commission's support for the nomination of the two structures listed above to the State and National Register of Historic Places within the context of a Multiple Property Document Nomination.

The Commission, after due consideration, finds that these structures meet the following criteria established by the National Park Service of the U.S. Department of the Interior:

These resources are eligible under Criterion A for representing trends in residential development in the Town of Amherst during the early decades of the twentieth century.

These resources are also eligible under Criterion C for embodying landscape and community planning design philosophies of the period.

I am in support of the nomination of the Entranceways to the State and National Register of Historic Places.

Very truly yours,

Susan J. Grelick  
Supervisor

EMK/SJG

Ellen K. Hironaka, Preservation Supervisor, Letter to SHPO re Entranceways



# TOWN OF AMHERST

ERIE COUNTY, NEW YORK

5583 MAIN STREET  
WILLIAMSVILLE, NEW YORK 14221  
PHONE: 716-631-7013  
FAX 716-631-7036  
www.amherst.ny.us

## HISTORIC PRESERVATION COMMISSION

ALBERT J. GILEWICZ, Chair

DANIEL J. WARD  
Councilmember/Liaison

Ms. Claire Ross  
Historic Preservation Field Service Bureau  
New York State Office of Parks, Recreation  
And Historic Preservation  
Peebles Island  
P.O. Box 189  
Waterford, New York 12188-0189

Gloria Ciminelli, Vice-Chair  
Richard H. Cole  
Addison J. McGowan  
Nancy B. Mingus  
Dr. Elizabeth Pena  
Jacqueline C. Simon

September 14, 2005

RE: Mul. Res. Associated with Sub. Dev of Buffalo, NY  
Entranceway at Main St. at Roycroft Blvd.  
Entranceway at Main St. at Lamark Dr. and Smallwood Dr.  
Town of Amherst, Erie County

Dear Ms. Ross:

On behalf of the Town of Amherst Historic Preservation Commission, please be advised that the Commission members unanimously support the designation of the entranceways as historic structures worthy of preservation and protection. These structures have become well know landmarks within the Town and their existence graces the main arterial leading from the outer expressway into the City of Buffalo.

We have reviewed the contents of the application and believe the overall context within which the justification has been established is adequate for action. While many components could be modified, the overall framework within which the designation is set forth should be adequate for action by the State Review Board. Thus, as opposed to editing text, we again state the following:

- The entranceways reflect a critical period of time in the development of Amherst as well as the country as a whole when development expanded beyond the city borders.
- The entranceways are associated with numerous local individuals of historic significance on land equally significant in the development of Amherst.
- The structures remain virtually intact from their original construction and thus warrant protection and preservation from demolition or perhaps even worse, inappropriate modifications by well meaning individuals or groups.
- The structures have become a significant contributor to the quality of life of the Town creating a warm and welcoming physical presence on a highly traveled arterial in Western New York.

Thus, it is with great interest and strong support that we recommend and encourage the State Review Board to approve this nomination to the National and State Registers of Historic Places.

Respectfully submitted

  
Albert J. Gilewicz, Chair

Cc: Town of Amherst, Supervisor's Office  
Historic Preservation Commission Members