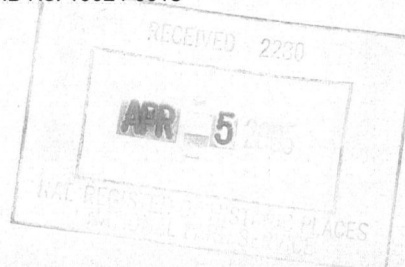


444

United States Department of the Interior
National Park Service

National Register of Historic Places
Registration Form



This form is for use in nominating or requesting determinations for individual properties and districts. See instructions in *How to Complete the National Register of Historic Places Registration Form* (National Register Bulletin 16A). Complete each item by marking "x" in the appropriate box or by entering the information requested. If an item does not apply to the property being documented, enter "N/A" for "not applicable." For functions, architectural classification, materials, and areas of significance, enter only categories and subcategories from the instructions. Place additional entries and narrative items on continuation sheets (NPS Form 10-900a). Use a typewriter, word processor, or computer, to complete all items.

1. Name of Property

historic name Saturn Club

other name/site number N/A

2. Location

street & town 977 Delaware Avenue not for publication

city or town Buffalo vicinity

state New York code NY county Erie code 029 zip code 14209

3. State/Federal Agency Certification

As the designated authority under the National Historic Preservation Act, as amended, I hereby certify that this nomination request for determination of eligibility meets the documentation standards for registering properties in the National Register of Historic Places and meets the procedural and professional requirements set forth in 36 CFR Part 60. In my opinion, the property meets does not meet the National Register criteria. I recommend that this property be considered significant nationally statewide locally. (See continuation sheet for additional comments.)

Signature of certifying official/Title [Signature]

Date 3/25/05

State of Federal agency and bureau _____

In my opinion, the property meets does not meet the National Register criteria. (See continuation sheet for additional comments.)

Signature of certifying official/Title _____

Date _____

State or Federal agency and bureau _____

4. National Park Service Certification

I hereby certify that the property is:

entered in the National Register.

See continuation sheet.

determined eligible for the National Register

See continuation sheet.

determined not eligible for the National Register.

removed from the National Register.

other, (explain:) _____

Signature of the Keeper [Signature]

Date of Action 5/19/05

Saturn Club
Name of Property

Erie County, New York
County and State

5. Classification

Ownership of Property
(check as many boxes as apply)

Category of Property
(check only one box)

Number of Resources within Property
(Do not include previously listed resources in the count.)

- public-local
- private
- public-State
- public-Federal

- district
- building(s)
- site
- structure
- object

Contributing	Noncontributing	
one	one	buildings
_____	_____	sites
_____	_____	structures
_____	_____	objects
one	one	Total

Name of related multiple property listing
(Enter "N/A" if property is not part of a multiple property listing.)

Number of contributing resources previously listed in the National Register

N/A

N/A

6. Function or Use

Historic Function
(Enter categories from instructions)

Current Function
(Enter categories from instructions)

social club

social club

7. Description

Architectural Classification
(Enter categories from instructions)

Materials
(Enter categories from instructions)

LATE 19TH AND EARLY 20TH CENTURY REVIVALS/
Tudor Revival style

foundation stone
walls brick
stone trim
roof slate
other half-timbering

Narrative Description

(Describe the historic and current condition of the property on one or more continuation sheets.)

Saturn Club
Erie County, New York

**NATIONAL REGISTER OF HISTORIC PLACES
CONTINUATION SHEET**

Section number 7 Page 1

DESCRIPTION

The Saturn Club is a brick and stone building that is arranged in a series of four wings that surround a central flagstone-paved court (referred to as the main inner court). The west wing contains the entrance lobby, main stairway; cocktail lounge (former billiard room) and Lounge; the north wing contains the main dining room and kitchen facilities; the east wing holds the Grille (the main bar); and the south wing houses the swimming pool and original athletic facilities. Each wing is two-and-one-half stories in height, except for the east wing, which is only one story high. Slate, saddleback roofs cover each of the wings. The west wing, overlooking Delaware Avenue from behind a wide, tree-shaded lawn, is the only public face of the clubhouse; the main rooms of the other wings look upon the inner court. Corridors running through the ground floor of each wing make an internal circuit around the court. Rooms on the second and third floors of the west, north, and south wings are also arranged along a similar corridor system. This description incorporates passages from a 1985 book by club member George Goodyear, *One Hundred Years, 1885-1985*, in which the author gives a detailed account of the interior of the building and its furnishings. A health and athletic facility built in 2002 at the rear of the clubhouse and attached to the east wing is a non-contributing structure.

Exterior

The Saturn Club is located on the east side of Delaware Avenue, a once-fashionable residential street that has many historic residences and churches. Directly across the street is George F. Newton's Hellenic Orthodox Church of the Annunciation (built as the North Presbyterian Church) of 1904, which is listed on the National Register of Historic Places. The adjacent property on the south is John Coxhead's Richardsonian Romanesque Delaware Avenue Baptist Church of 1894. A driveway along the north side of the clubhouse leads to a parking lot at the rear of the building on Utica Street, the next street north of the club property. The adjacent to the club property on the north is a late-nineteenth-century house that is now used for medical offices. At the corner of Utica Street, is a two-story modern brick office building. Behind that, adjacent to the parking lot on Utica Street, is a large red brick dwelling designed by Buffalo architect Edward Austin Kent in the late nineteenth century and now used as a small office building. To the rear of this building and abutting the north and west boundaries of club's property is a nineteenth-century brick carriage barn that is now used for a dental office. Abutting the rear of the property are the rear yards of a Second Empire style house and a Queen Anne dwelling, both of which are now used as small office buildings. These building face Linwood Avenue.

The façade of the west wing of the Saturn Club faces Delaware Avenue from behind a wide, tree-shade lawn and is the only part of the building familiar to the public. (The other elevations continue the style of the front of the building.) The red brick walls are laid in Flemish diagonal bond with flared headers, a late medieval form of brickwork that produces an attractive pattern of diagonal lines crossing each other. Limestone is used for trim elements, including quoins, window frames, water table, and copings. All of the windows are flat-headed casement windows with small square panes and molded stone labels. The west wing is composed of four sections: at the north or left side is a small half-timbered unit that contains a side entrance on the ground floor, a window on the second floor, and a dormer on the third floor. This unit is recessed several feet from the line of the main portion of the building. The main part of the west wing is a long structure resembling a large house six bays wide. Tall chimneys rise through the gable ends and from the center of the ridge of a steeply sloping saddleback roof. A stone stringcourse across the front of this part of the building defines the height of the second floor. A two-story brick porch projecting from the front of the building between the fourth and fifth southern bays forms the main entrance to the clubhouse. The porch, which has stone buttresses at the forward angles, is the main feature of the façade. Its ground floor has a broad segmental stone arch behind which is the massive oak door that opens into the entrance lobby. Between the arch and a casement window in the second level is a carved stone relief depicting the planet Saturn. Above the window is another stone relief showing the prow of a ship in the form of a dragon from which projects a flagpole. The porch terminates in a crenellated parapet. To the south of the main unit is a lower, one-and-a-half story section beneath a saddleback slate roof. A wide, stone bay window rising into the roof occupies the center of this part of the building and lights the main lounge. The last unit of the façade is a two-story blank brick wall that shelters outdoor paddle tennis courts behind it.

Ground Floor: Main Inner Court

The 93-by -50-foot court space appears today as it did when Goodyear described it:

Saturn Club
Erie County, New York

**NATIONAL REGISTER OF HISTORIC PLACES
CONTINUATION SHEET**

Section number 7 Page 2

The main inner court . . . has six entrances: on the west from the main hall; two entrances on the north, from the dining room, and from the cloistered walk [a glazed brick and timber covered passageway connecting the Grille and the Dining Room]; on the east from the grill; in the southeast corner from the south corridor; on the south from the center of the south corridor. . . . The east entrance, from the grill, opens onto a landing, with two sets of nine steps each leading downward on each side to the court level. Below the heavy stone balustrade is a fountain . . . Above this east doorway is a stone panel, designed by Lucius Bartlett, showing Saturn holding a stein of beer and a lank Puritan before him with his left hand raised in horror. . . . A prominent feature of the north side is the two-story bay in the center, the lower windows in the dining room, the upper windows in the founder's room, the two divided by a wide band of carved escutcheons, and the whole surmounted by a steep gable including a bargeboard deeply incised with extended quatrefoils. A less prominent gable is at the west end.

Originally the courtyard surface was largely grass, with flagstones around the edges. About 1950 almost the entire surface, except around the trees and the planted beds at the edges, was covered with flagstones . . . In the spring of 1964, a square permanent dance floor, 25 by 25 feet, of a specially mixed concrete, was placed in the center of the court. . . Both luncheons and dinners have often been served in the courtyard during the summer.¹

A smaller court opens from the main court at its northeast corner and is screened from the larger space by a covered passageway referred to as the cloistered walk. This smaller court measures 42 by 20 feet and has a fountain in the center. This small open area is overlooked by a bay window in the east end of the Dining Room.

Ground Floor: West Wing

The main entrance to the clubhouse is located in the center of the west wing and is recessed beneath a segmental arch in the projecting porch. Once inside, one enters the central lobby, with, at the left, the front desk and a small business office. These facilities are separated from the lobby by a timber-framed screen that has display cases below a counter. Adjacent to this area, a circular stone staircase leads to the second and third floors. The lobby terminates in a pair of doors that open into the court. Above this arched opening appear the lines: *Then Hail, O Saturn, Hail thou Age of Gold, Ere Hair turn Silver ere the Blood run Cold.* (The lines come from a poem written by Saturn Club member Robert Cameron Rogers on the occasion of the opening in 1890 of the former clubhouse.) This doorway is located in the east wall of a wide, north-south corridor referred to as the main hall. This space, like the lobby, is constructed of plaster walls with limestone trim, flagstone flooring, and a beamed ceiling. It runs perpendicular to the lobby and forms the first section of the corridor circuit that surrounds the court on this level.

From the left or west side of the landing at the north end of the hall a segmental arch covers a flight of two steps that lead down to a cocktail lounge and dining room that was the original billiard room. This ivory-colored room was redecorated in 1985 when scenic wallpaper depicting French naval vessels in a port was installed on all four walls and the inscription *Sir, said Herbert Spencer, "to play a good game of billiards is the mark of a well-rounded education; to play too good a game of billiards is the mark of an ill-spent youth,* which had been removed in an earlier renovation, was repainted on the arch above the window in the north wall. From the right side of the landing, two steps lead up to a short corridor that connects with the side entrance vestibule that contains a staircase rising to the second floor.

On the west side of the main hall, south of the lobby, two flights of stairs beneath twin pointed arches lead down into the Lounge. This room looks onto Delaware Avenue through a large bay window in the west wall. This room is two stories high and covered with a wooden hammer beam ceiling, the trusses of which are supported on corbels carved with images of Roman gods. At the south end of this room is a raised stage beneath a proscenium arch; on the north end is a large fireplace above which is a balcony that runs the entire width of the room. What Goodyear said of this hall in 1985 is still true:

The entrance to the main lounge from the central hall is thru two heavy stone arches, with three descending steps. This room, the most important in the club, is a full two stories in height, with an overhanging balcony along the north wall, and a raised stage at the south end. A two-story bay entered under a high stone arch, on the west (street) side, is closed by a two-story

¹ *Ibid.*, pp. 82.

*Saturn Club
Erie County, New York*

**NATIONAL REGISTER OF HISTORIC PLACES
CONTINUATION SHEET**

Section number 7 Page 3

bay window. An alcove in the southeast corner, entered thru a single arched opening similar to those between the lounge and central hall, and containing a small fireplace, forms in effect a separate room. The ceiling of the lounge is of open timber and planks resting on heavy timber trusses, the hammer beams ends of which are carved into the leering faces of monks. Beneath these are a series of six grotesque stone corbels, designed by Lucius Bartlett and depicting Saturn and his family (Saturn, his wife Ops, his father Uranus, his mother Gaea, his son Jupiter, and Jupiter's wife Juno). The lower walls of the room are covered with oak-paneled wainscot, and the upper wall spaces, between the open timbers, with a rough plaster surface. A line of casement windows along the upper portion of the north half of the east wall (looking into the central hall of the second floor) gives a clerestory effect. On the wall between these windows and the oak wainscot is inscribed the Saturn verse from Fitzgerald's translation of the *Rubaiyat of Omar Khayyam: Up from Earth's Center through the Seventh Gate/I rose, and on the throne of Saturn sate, /And many a Knot unravell'd by the Road, /But not the Master-knot of Human Fate. . . .* The fireplace is flanked by a window on each side. Stretching across the plaster surface immediate above the oak wainscot is the legend *Good Company and Good Discourse are the Very Sinews of Virtue* from Izaak Walton's *Compleat Angler. . . .* Underneath the balcony, on the north wall above the oak wainscot, is emblazoned Saturn's famous motto—*Where the Women Cease from Troubling and the Wicked Are at Rest*. The two-story window in the large bay on the west side is the principle source of light in the room. In July 1927, the second (from the top) row of this window was provided with a unique stained glass pictorial presentation of the procession from the old to the new clubhouse on October 21, 1922.²

At the north end of the west façade, and recessed several feet from it, is the side entrance. This entrance is beneath a stone segmental arch above which is a half-timbered section with a dormer in the roof above that. This entrance was formerly known as the women's entrance because the winding staircase inside the lobby leads to the Women's Dining Room on the second floor.

Ground Floor: North Wing

Off of the main hall on the north is a small coat room (on the west side) and, further on, on the right or east side, the segmental-arched entrance to the main Dining Room. What Goodyear said in 1985 of the dining room is still true:

The main dining room . . . has three bays well lighted by bay windows, two on the south facing the main inner court, and the third on the east facing the small inner court. Also on the east, just south of the bay on that side, is an oak door opening onto the cloistered walk leading to the rear wing. On the south, between the two bays, is another oak door opening onto the main inner court. The room itself is finished entirely in oak paneling extending from floor to ceiling. Its main entrance is on the west, through a [segmental] stone arch. The plaster ceiling is divided into three sections by beams extending across the width of the room. Both these beams and the plaster cornices surmounting the walls are molded with a decorative vine motif. The centers of each of the three sections of the ceiling are decorated with 8-pointed star moldings of heraldic design, from each of which is suspended a chandelier. . . . The floor is of random width planks, held in place by large wooden dowels. On the north wall is a paneled door opening to the kitchen and east of this a shallow stone fireplace. . . . Extending along the entire north side of the dining room is the kitchen; to the east of the kitchen, the service stairs . . . and beyond that a room which has served variously as a business office, later as employees' lounge, and is now the manager's office.³

Ground Floor: East Wing

The east wing on the ground floor contains the Grille, the main clubhouse bar. Goodyear's description of the Grille still holds true:

In style the grill is a tap room of an English 16th-century inn, filling the entire east end of the main court. The framework is of timber, with the wall and ceiling spaces between the timbers filled with plaster. . . . There are two immense fireplaces, one in the east and the other in the south wall. Over the east fireplace is a panel of colored tiles, made in Holland from a sketch by Lucius E. Bartlett, showing Saturn lolling before a fire. It bears an inscription from Shakespeare, *Shall I not take mine*

² George Goodyear, *One Hundred Years, 1885-1985* (Buffalo: Saturn Club, 1985), pp. 65-67. Since the admission of women to club membership, the motto has been altered to read "Where the Wicked cease from Troubling and the Weary are at rest."

³ *Ibid.*, pp. 72-73.

Saturn Club
Erie County, New York

**NATIONAL REGISTER OF HISTORIC PLACES
CONTINUATION SHEET**

Section number 7 Page 4

*ease in mine inn? . . . On the wall over the south fireplace is the verse: Which is the properest day to drink, /Saturday, Sunday, Monday? /Each is the properest day, I think, /Why should I name but one day? . . . The bar, with the usual counter, is at the north end of the room. The following verse (from Thomas Moore's *The Young May Moon*) appears on the wall behind it: *And the best of all ways/To lengthen our days/Is to steal a few hours from the night.* On the right or east side of the bar is a door to a small wash room.*

On the west or courtyard side of the grill proper, there are two large bays. . . . Between the bays is a heavy oak door opening directly onto the main inner court. Over this door is the short inscription: *Qui a bu, boira.* [Who has drunk, will drink again.] . . . The chandelier in the center of the room, together with the wall brackets, came from the old clubhouse. In back of the bar, reached from the corridor connecting the grill room with the rear club entrance, is a small coat room. Over the door to this room is inscribed Verse 11 from Psalm 104 (one of the few inscriptions in the club not in the old clubhouse): *They give drink to every beast of the field; the wild asses quench their thirst . . .* At its far or northern end, west of the bar proper, the grill opens onto a corridor leading to the rear entrance [to which, in 1964] a small vestibule was added on the exterior. Opposite the rear entrance, another heavy oak door off this corridor opens directly onto the smaller of the inner courts. Nearer the grill, on the courtyard side, another heavy oak door opens onto the cloistered walk [this is a glazed brick and timber passageway] leading to the main dining room. Beyond the rear entrance the corridor turns westward, leading to the kitchen and other service facilities.⁴

Ground Floor and Basement: South Wing

The south wing houses the club's original athletic facilities. The east-west corridor of the south wing gives access to the swimming pool (on the south side of the corridor). At the east end of the corridor is the indoor entrance to the Grille and stairs that lead down to the south wing basement sport facilities. Stairs at the west end of the corridor also give access to the basement bowling alley and related athletic facilities. Most of Goodyear's description of the south wing still rings true:

The south corridor, from the central hall to the rear of the club, is lined with photographs of all the club's deans . . . The north wall of the corridor looks out upon the central court, through a series of four quadruple and one double casement windows. In the center of the north wall is a bay, containing spiral staircases, one leading to the second floor and one leading to the basement. At its east end there is a landing with a series of five steps leading up to the grill, and opposite the bottom step is a small door opening onto the courtyard. The south wall of the corridor contains two doors, one the entrance to a small barber shop and the other an entrance . . . to the swimming pool.

The athletic or bath department consists of a large locker room with three squash courts on the east side, an exercise room at the south end, and a 'recovery' room with three cots. The 'recovery' room is used variously for an afternoon nap, for actual recovery after a strenuous night, and as a free place to spend the night. Just north of the 'recovery' room is a short corridor leading to the swimming pool. Off this corridor lead also a hot room, . . . a rubbing room. . a steam room, and a shower room with four showers.

On the roof above part of this complex is a sunning area. In the clubhouse as it was in 1922, the locker room extended only as far south as the swimming pool, shower room and recovery room, and was the equivalent of two stories in height. In addition, only the two northernmost squash courts were built at the time. In 1928, a one-story addition to the locker room . . . was constructed . . . The third squash court was probably added at the same time. [Bley & Lyman's blueprints for the locker room addition are in possession of the club.] In 1931, a second addition was built . . . It consisted of an exercise room and sunning roof . . . The roof of the locker room addition was first used for sun bathing in 1928.

There are two other active athletic facilities in the club—the bowling alleys and the paddle tennis courts. The bowling alleys were part of the club as built in 1922, and are reached via the stone stairway descending from the south end of the main central hall. The alleys are directly beneath the main lounge, entrance lobby, front desk and cloakroom. . . . The

⁴ *Ibid.*, p. 72.

*Saturn Club
Erie County, New York*

**NATIONAL REGISTER OF HISTORIC PLACES
CONTINUATION SHEET**

Section number 7 Page 5

paddle tennis courts were built in 1967; the first one in the summer, just outside and west of the locker room extension; and the second over the new room built later in the year for the accommodation of both bowlers and paddle tennis players. The new room beneath the south lawn, 26 by 46 feet in size, as built in 1967, constitutes an extremely useful addition to the club facilities, with a 'temporary' bar, a women's wash room, . . . and an exit to the paddle tennis courts above.

The remainder of the basement is occupied by a lounging room for employees, storage room for food, supplies, records, etc., shop and maintenance facilities, and the heating plant.⁵

Second Floor: West Wing

One reaches the second floor by way of the spiral main staircase in the entrance lobby. From the second floor lobby, we can still follow Goodyear's tour of the building:

One step down from the south side of this lobby is the balcony of the main lounge. On the west side of the lobby are the oak double doors to the library [a rectangular room paneled in dark oak and overlooking Delaware Avenue], while eastward the lobby opens into the main second floor hall, extending north and south. . . . On the west wall, south of the second floor lobby, is a triple casement clerestory window, then two steps downward as the hall narrows southward two more triple casement clerestory windows, all overlooking the main lounge. At the south end the hall opens onto a short corridor and thence to a long corridor extending the full length of the south wing. . . . At the north end of the hall is a doorway over which is inscribed the legend: *The Lord loveth a cheerful loser*. This doorway opens into a corridor leading to the north wing.⁶

From the landing on the second floor reached from the side entrance lobby (also known as the women's' entrance), one has direct access to the two-story Women's Dining Room. This important club room looks the same today as it did when Goodyear described it as follows:

The room can be reached through a short corridor from the main second floor hall, but its main entrance, through double doors on its north side, is from the second floor side lobby. Inside the lounge, and above these double doors, is a plaster panel representing Saturn emptying a cornucopia of fruit at the feet of Venus, designed by Lucius E. Bartlett. In the center of the south wall is a peak-hooded Norman fireplace of stone. To its right is an arched niche or shrine . . . containing a primitive carved Virgin . . . The ceiling beams and joists and open plank work were painted by William C. Francis . . . The sides of the beams portray scenes from the story of Aucassin and Nicolette, and the inscription in antique letters reciting the story itself in brief. The mural on the north wall, also painted by William C. Francis, in 1925, depicts the myth of Aphrodite springing from the sea and finding refuge in the blessed isle of Cytherea, and contains the inscription, *Ah, Poets, leave the sordid earth awhile; it may be we shall touch the Happy Isle*.

On the street or west side, the lounge is connected, through three wide arched openings, to a long loggia. Four quadruple casement windows in the loggia, three on the west, and one on the north, overlook Delaware Avenue. At the south end of the loggia is a moveable bar. The floor is paved with 6-inch tiles similar to the ones in the side entrance ante-room below.⁷

Second Floor: North Wing

Also from the landing at the top of the steps from the side entrance, we can still follow Goodyear's description of the second floor of the north wing:

⁵ *Ibid.* pp. 76-77.

⁶ *Ibid.* 83.

⁷ *Ibid.*, pp. 86-87.

*Saturn Club
Erie County, New York*

**NATIONAL REGISTER OF HISTORIC PLACES
CONTINUATION SHEET**

Section number 7 Page 6

The second floor side lobby is connected to the side entrance lobby on the ground floor by the stairway previously described. . . . At the east end a door leads to a small [paneled] cocktail room with a recessed bar [this room is now known as the Mirror Bar] and a fine parquet floor. . . . Beyond the cocktail room is the large private dining room [where] . . . the deans eat in solemn ritual on the night the new dean is chaired. In 1984, it was officially named . . . the 'Deans' Room.' . . . Beyond the Deans' Room is a smaller paneled room, available for dining or smaller parties.

Both the Deans' Room and the smaller paneled room beyond open onto a corridor serving the north wing of the second floor. At its end is a small room once used as a card room . . . On the south or main courtyard side there were at one time a large card room at the east end, and next to it a smaller 'poker' room. In 1928 these two rooms were made into one, permitting its use of stag lunches and dinners. In 1954 . . . it was officially named the 'Founders' Room.' Between this room and the main second floor hall is the men's second floor wash room, with antiquated plumbing.⁸

Second Floor: South Wing

This part of the building remains as Goodyear described it in 1985:

As originally built, the clubhouse contained extensive living quarters, 22 rooms in all, lining the south corridors of the second and third floors. The rooms on the third floor of the north wing were less pretentious and used only occasionally by staff members. [On Bley & Lyman's plans, these rooms were labeled for use by servants.] The rooms in the south wing, however, were for members and their guests. . . . There are bath rooms between rooms 221 and 223, rooms 227 and 229, and rooms 230 and 232, and bath rooms at the ends of rooms 222 and 226. The plumbing is mostly the original installation of 1922. In 1938, rooms 222 and 224, on the south side of the second floor corridor, were converted into what has come to be known as the 'Log Cabin.' It is an attractive pine-paneled room decorated with sporting prints. . . . In one end is a recessed bar alcove, and a bath room at the other end.⁹

Third Floor

The third floor contains small bedrooms and several bathrooms that have not been used since 1968 for anything but storage.

⁸ *Ibid.*, pp. 87-88.

⁹ *Ibid.*, p. 88.

Saturn Club

Erie County, New York
County and State

Name of Property

8. Statement of Significance

Applicable National Register Criteria

(Mark "x" in one or more boxes for the criteria qualifying the property for National Register listing.)

- A** Property is associated with events that have made a significant contribution to the broad patterns of our history.
- B** Property is associated with the lives of persons significant in our past.
- C** Property embodies the distinctive characteristics of a type, period, or method of construction or represents the work of a master, or possesses high artistic values, or represents a significant and distinguishable entity whose components lack individual distinction.
- D** Property has yielded, or is likely to yield, information important in prehistory or history.

Criteria Considerations

(Mark "x" in all the boxes that apply.)

Property is:

- A** owned by a religious institution or used for religious purposes.
- B** removed from its original location.
- C** a birthplace or grave.
- D** a cemetery.
- E** a reconstructed building, object, or structure.
- F** a commemorative property.
- G** less than 50 years of age or achieved significance within the past 50 years.

Narrative Statement of Significance

(Explain the significance of the property on one or more continuation sheets.)

Areas of Significance

(enter categories from instructions)

ARCHITECTURE

SOCIAL HISTORY

Period of Significance

1921-1954

Significant Dates

1922; building dedicated

Significant Persons

(Complete if Criterion B is marked above)

N/A

Cultural Affiliation

N/A

Architect/Builder

Bley & Lyman, Architects

Harry Williams. Builder

9. Major Bibliographical References

Bibliography

(Cite the books, articles, and other sources used in preparing this form on one or more continuation sheets.)

Previous documentation on file (NPS):

- preliminary determination of individual listing (36 CFR 67) has been requested
- previously listed in the National Register
- previously determined eligible by the National Register
- designated a National Historic Landmark
- recorded by Historic American Buildings Survey # _____
- recorded by Historic American Engineering Record # _____

Primary location of additional data:

- State Historic Preservation Office
- Other State agency
- Federal agency
- Local government
- University
- Other Name of repository: _____

*Saturn Club
Erie County, New York*

**NATIONAL REGISTER OF HISTORIC PLACES
CONTINUATION SHEET**

Section number 8 Page 1

SIGNIFICANCE

The Saturn Club at 977 Delaware Avenue in Buffalo, New York, is an outstanding example of early-twentieth-century Tudor Revival architecture by the prominent local firm of Bley & Lyman. The principal designer, Duane Lyman, was a member of the club and a leading society architect in Buffalo. The fourth home of one of the city's important social association whose founders had modeled its governance on academic lines, the building reflects the Collegiate Gothic style of architecture that at the time was especially identified with the career of Boston architect Ralph Adams Cram. The clubhouse, which opened in 1922, preserves to a remarkable degree the integrity of its original exterior and interior features. Various clubrooms still display poetic inscriptions chosen by club members as well as mural decorations and carvings by locally important artists. The club also still owns many pieces of furniture that were purchased when the building was placed in operation.

The formation of private clubs--associations of like-minded individuals for the purpose of fostering camaraderie--began in England in the early eighteenth century. The first associations that might be called clubs were groups of men who met in reserved rooms in taverns or coffee houses. The first clubhouse constructed exclusively from membership subscriptions was the Albion Hotel in London, which went up in the 1750s. Other clubhouses that followed in London in the late eighteenth century emulated the look of domestic architecture established by the Albion. The most well-known and influential London club buildings were the Reform Club of 1842 and the Traveler's Club of 1837, both designed by Sir Charles Barry, the co-architect of the Houses of Parliament. Barry firmly established the Renaissance palace as the model for private clubs. The Reform Club was also the first club to have residential rooms for members. The Renaissance or Neo-Classical style remained popular for clubhouses in England and the United States well into the twentieth century.

The club movement reached its peak in the English-speaking world in the late nineteenth century. During this time, many clubs formed in large cities all across America. The most important, in terms of the influence of their Neo-Classical architecture on clubhouse design, were McKim, Mead and White's University Club of 1899 on Fifth Avenue in New York City, with its magnificent Renaissance palace exterior and grand vaulted interiors, and the Century Club of 1891, by the same architects, nearby on Forty-Third Street. In terms of the makeup of the membership, Buffalo's Saturn Club resembled that of these two well-known organizations, which limited admission to well-educated and artistic gentlemen.

On the evening of October 21, 1885, Carleton Sprague invited thirteen friends, including William F. Kip, Francis Almy, and John B. Olmsted, to his house at 704 Main Street for the purpose of forming a new club for young, up-and-coming men. The Buffalo Club, which had been established in the 1860s, seemed too conservative for Sprague, who wanted the new association to be made up of college graduates. Several names for the new group were proposed, including University Club and College Club (a college degree was to be a required asset for membership). But Almy's suggestion that the new group meet on Saturdays and, for that reason, be called the Saturn Club carried the evening. To reinforce the lighthearted intellectual image of the new association, he also proposed, perhaps half in jest, that the directors of the new club be called the faculty and that executive directors adopt the academic titles of dean, registrar, and bursar and wear academic attire. A constitution was approved and the three principals assumed office that night. One of the first orders of business was to start inviting others to join the association.

The club grew quickly in membership and wealth and moved several times in its early years to ever better quarters. Initially, the group met in a house owned by Sprague's grandfather at 25 Johnson Park. By 1886, the members could afford to rent three rooms at the rear of a dwelling at 640 Main Street. The following year, they moved to another rented house, a small Second Empire style dwelling at 331 Delaware Avenue; two years later the club re-located to a larger, Italianate cottage at 393 Delaware Avenue, opposite the Buffalo Club.

In 1889, the club, which now consisted of 150 members, became formally incorporated in Erie County and laid plans to construct its own building. By the end of January, Sprague could report that over \$13,000 had been raised for the project; during the following month, the directors purchased a lot at the southeast corner of Delaware Avenue and Edward Streets for the construction of a three story brick building to be designed by the rising firm of Marling & Burdett of Buffalo. Construction proceeded apace, and the

Saturn Club
Erie County, New York

**NATIONAL REGISTER OF HISTORIC PLACES
CONTINUATION SHEET**

Section number 8 Page 2

new building was ready to be dedicated on December 13, 1890.¹ At that time, John Olmsted penned a hymn that concluded with the words "Where the women cease from troubling and the wicked are at rest," a motto, that became inscribed above main staircase windows.² "These years, before the turn of the century," wrote George Goodyear, an historian of the club, "were the halcyon days of the Saturn Club—the days when the club was a true refuge of man from woman, the days before women's suffrage and women's liberation became issues of the time. . . . There were evenings of papers by members, poetry, reading, music, slight-of-hand exhibitions, fencing and boxing exhibitions, lectures on many subjects, and 'psychological experiments.'"³ (Duane Lyman's building, however, included special facilities for use by women, notably, the Women's Dining Room, which is one of the clubhouses' finest spaces. Over the years, wives of many Saturn Club members held membership in the city's all-female Garrett Club.) Although as early as the 1890s the gentlemen had discussed the notion of opening club membership to women, no affirmative action was taken to amend the all-male rule until 1988.

With a proper clubhouse, the Saturn Club membership swelled to include some of the leading lights of Buffalo at a time when it was the eighth largest city in the nation. Active in its doings were such men as Roswell Park, the noted physician, J. N. Larned, the nationally-known librarian, Lars G. Sellstedt, Buffalo's leading painter, James W. Wadsworth, U. S. Senator from New York, J. N. Adam, the owner of Western New York's largest department store, and A. Conger Goodyear, a devoted patron of the arts and later founder of the Museum of Modern Art. "Our one hundred and fifty members represent all that is best in Buffalo's intellect and culture," asserted Dean Carl T. Chester at the building's dedication in 1890. "Our club should not be merely for our enjoyment," he continued, but should "always be weightily in favor of whatever tends to the intellectual advancement of this city."⁴

By 1914, the directors of the club were again talking about enlarging the Delaware Avenue clubhouse, which had already been expanded in 1896 and 1906. With the club membership now at 350, the facilities were felt to be inadequate—especially the athletic facilities—to the demands of twentieth-century club life. A building committee took charge of looking into enlarging the existing structure, but no action resulted from their positive recommendation. In 1917, another committee proposed demolishing the existing structure and building a new clubhouse on the site. At this time, the directors asked the firm of Lansing, Bley & Lyman to prepare a plan for the new structure. (Duane Lyman, who would be a member of the Saturn Club for over fifty years, was one of the partners in the firm.) The firm drew detailed plans for a handsome, seven-story building in the Renaissance palace style that had been traditional for urban clubhouses since the nineteenth century. But with the war on, club members were reluctant to embark on so major a project, and the faculty decided to wait until peace came to pursue further the issue of a new clubhouse.

Eventually, in December 1920, a new building committee suggested selling the existing clubhouse and erecting a new building elsewhere. Duane Lyman (his firm was now Bley & Lyman) was asked to develop new plans for a clubhouse, together with Ralph Plumb, a club member. By February 1921, the club had purchased the property at 977 Delaware Avenue, an address on one of the nation's most fashionable avenues,⁵ and approved Lyman's plans for a picturesque Tudor style building enclosing an open court. On October 21, 1921, the cornerstone of the new building, which would cost \$500,000, was laid. Exactly one year later, on October 21, 1922, the clubhouse was dedicated with an elaborate ceremony that featured members in full academic regalia proceeding from the old clubhouse to the new one.

Over the years, few substantive changes have been made to Bley & Lyman's building; even during renovations undertaken in 1936 and 1985, existing exterior and interior features were respected. In 2002, the addition of a new athletic facility at the back of the building (a non-contributing structure) did not compromise the historic clubhouse.

¹ This building, which no longer stands, was enlarged in 1896 and 1906.

² The quote comes from the female short story writer and novelist Frances Courtenay Baylor's book *On Both Sides* (Philadelphia: Lippincott, 1886), p. 453. According to *Historical Sketch of the Saturn Club of Buffalo, New York* (Buffalo: Saturn Club, 1922), p. 27, a copy of the novel was kept in the club library. The motto, which was transferred to the 1922 clubhouse where it appeared beneath the balcony in the Lounge, has since been modified to read "Where the Wicked cease from Troubling and the Weary are at rest."

³ George Goodyear, *One Hundred Years, 1885-1985* (Buffalo: Saturn Club, 1985), p. 20.

⁴ *Ibid.*, p. 25.

⁵ For a history of Delaware Avenue, see Francis R. Kowsky, "Delaware Avenue," in *The Grand American Avenue, 1850-1920*. Edited by J. Cigliano and S. B. Landau (San Francisco: Pomegranate Books, 1994), pp. 35-64.

Saturn Club
Erie County, New York

**NATIONAL REGISTER OF HISTORIC PLACES
CONTINUATION SHEET**

Section number 8 Page 3

A native of Lockport, New York, Duane S. Lyman (1886-1966) studied architecture at Yale University. After graduating in 1908, he followed the example of many young architects of the time and travel abroad. An extended stay in Europe with his bride, Elizabeth Stimson, ended in 1913 when, on the eve of World War I, the couple returned to Buffalo. Lyman began his professional career then with the firm of Lansing & Bley. The following year, Lyman joined the Saturn Club. Presumably, he was chiefly responsible for the proposal for a Renaissance style clubhouse that Lansing, Bley & Lyman submitted to the club in 1917. When Lyman volunteered for military service during the war, however, he severed his ties with the firm

Coming home to Buffalo after the war, Lyman formed a partnership with Lawrence Bley that lasted twenty years. The new Saturn Club was one of the first commissions to come their way. Many would list it as the best building Lyman designed. Other prominent structures by Lyman in Buffalo include 800 West Ferry, a large apartment building that is still one of the city's best addresses, the Annie Lang Miller house (1929-1933), a large stone mansion that shares the Tudor Revival style with the clubhouse, and Christ the King Chapel at Canisius College (designed in 1949, by which time Lyman was working alone). Among other works were over 100 school buildings, many churches, and numerous large city and suburban houses, including Lyman's own residence at 78 Oakland Place. At a time when earnest modernist architects of the International Style sought to express the new age in buildings inspired by industrial design and made of the new materials of plate glass and steel, Lyman celebrated the warm textures of the traditional materials of brick, stone and wood and the reassuring feeling of the past. A talented conservative, Lyman could design in a variety of historical styles with finesse; his buildings always display fine craftsmanship and good taste. When Lyman died in 1966, local newspapers described him as the Dean of Western New York Architects.

For his design of the Saturn Club, Duane Lyman evidently paid close attention to recent developments in academic architecture. For the Saturn Club's closest neighbors, architecturally speaking, were not its Renaissance palace predecessors but the rambling, Tudor style quadrangles of such institutions as the University of Pennsylvania, Washington University, and Princeton University. Since the late 1890s, American institutions of higher education had espoused a late medieval English vocabulary for campus architecture that looked to the historic buildings at Oxford and Cambridge for inspiration. Those venerable schools had been constructed in a series of low buildings surrounding open cloisters or "quads." Cope and Stewardson's Undergraduate Quadrangle at the University of Pennsylvania of 1895 led the way in this movement. Other campuses quickly followed the lead of the Philadelphia institution: Washington University in St. Louis hired the same firm in 1899 to design its new campus; Yale commissioned James Gamble Rogers in 1917 to lay out Memorial Quadrangle, and in 1913 Princeton called on Ralph Adams Cram, the country's leading advocate for "modern" Gothic architecture, to design the acclaimed Graduate College. For many architects and educators, Princeton's buildings defined the term Collegiate Gothic that came to be used to describe this genre of architecture. "Gothic architecture," wrote Woodrow Wilson, president of Princeton, "has pointed everyman's imagination to the earliest traditions of learning in the English-speaking race."⁶ It was certainly in this spirit that Duane Lyman adapted the Collegiate Gothic style to the design of the Saturn Club, where character and ambience counted for far more than did modernity.

The Delaware Avenue clubhouse is, in truth, the best local example of Collegiate Gothic architecture. With considerable skill and subtlety, Lyman orchestrated a diverse vocabulary of late medieval British architectural elements: the quadrangle ground plan, with low rise, picturesque elevations surrounding an open court; brick walls laid in Flemish diagonal bond and trimmed with limestone quoins, labels, and segmental arches; crenellated parapets; half-timbered gables; carved verge boards, mullioned-and-transomed windows with small diamond or square leaded panes; slate saddleback roofs; and numerous bay windows.⁷ Although higher education was not its function, the Saturn Club was presided over by a dean and cap-and-gowned "faculty" proud of their education. In creating a fictional "Olde English" campus environment, Lyman fashioned an elaborate architectural pleasantry that mirrored the club's tongue-in-cheek academic pretensions. What better way to promote the sense of community, the mood of high spirits, and the aspiration to high-mindedness that molded the life of the club?

The various inscriptions, murals, and carvings in the club's interior partake of this light hearted mood of erudition. Most of the imagery comes from literary sources that would have been familiar to college-educated people in the early twentieth century.⁸ A recurring theme is that of Saturn, the Roman god of agriculture, whose reign was marked by a golden age of happiness and virtue.

⁶ Raymond P. Rhinehart, *Princeton University* (New York: Princeton Architectural Press, 2000), p. 41.

⁷ Harry Williams was the general contractor for the construction of the clubhouse.

⁸ For an explanation of the many inscriptions in the building, see *Historical Sketch of the Saturn Club of Buffalo, N.Y.* (Buffalo: Saturn Club, 1922); *Forty Years, 1885-1925* (Buffalo: Saturn Club, 1925), pp. 23, 29, 30, and 111; and Goodyear, *op. cit.*, pp. 60.72.

Saturn Club
Erie County, New York

**NATIONAL REGISTER OF HISTORIC PLACES
CONTINUATION SHEET**

Section number 8 Page 4

(Members also surely knew that the Roman holiday of Saturnalia was a time of feasting and merrymaking.) Lucius E. Bartlett (1860-1945), a well-known local illustrator and lithographer who had joined the club in 1914, designed many of the carvings. Bartlett, who served as director of the Albright Art Gallery (the present Albright-Knox Art Gallery) from 1930 to 1939, had had special training in his youth in the design of decorative stone carvings. For the club, Bartlett provided drawings for reliefs over the main entrance, portraying the planet Saturn (and based on an illustration in Elihu Vedder's popular 1884 edition of Edward Fitzgerald's translation of the Rubaiyat of *Omar Khayyam*), on the six stone corbels in the lounge, representing Saturn and his family⁹, in the women's room, showing Saturn presenting the goddess Venus with a cornucopia, and above the courtyard entrance to the Grille, depicting Saturn quaffing a stein of beer. Bartlett, who over the years furnished designs for many of the club's invitations (and presumably, the club playing cards), also made the sketch for the tile over-mantel in the Grille that shows Saturn relaxing before a fire mouthing Shakespeare's "Shall I not take mine ease in mine Inn?" Bartlett's charming designs were the perfect complement to Lyman's evocative architecture.

Another artist who contributed to the decoration of the building was the painter William C. Francis (d. 1945). Although Francis was a member of an old Buffalo family, held a degree from Columbia University, and had been a McKim Fellow at the American Academy in Rome, he preferred to join the University Club rather than the Saturn Club. Between 1913, when he returned to Buffalo from abroad, until he moved to the Hudson Valley in the 1930s, Francis created murals in a number of Buffalo buildings. Those in the M&T Bank (built as the Buffalo Savings Bank) on Main Street in downtown Buffalo and in the First Presbyterian Church on Symphony Circle are among the most important that still exist. In the Saturn Club, Francis decorated the Women's Dining Room with subjects aimed at a feminine audience. On the four massive wooden ceiling beams, he recounted, in a flat and colorful style reminiscent of the British Pre-Raphaelite artists, the medieval love story of Aucassain and Nicolette. On the south wall of the room, Francis painted a charming mural celebrating the birth of Venus from the foam of the sea and her arrival on the fortified Island of Cythera, the land of love.¹⁰

In 1925, when the Saturn Club was forty years old and the present building was nearly new, architect Duane Lyman and artist Lucius Bartlett were appointed members of a committee formed to celebrate the anniversary. The publication that resulted from their efforts concluded with the statement that the Saturn Club had "members of all ages, but whatever their ages may be, as sons of Saturn they have what the Saturn Club has always had, what it will always have, and what is one of the best things in the world to have, the youthful heart."¹¹

⁹ For Bartlett's description of these corbels, see *Forty Years, 1885-1925*, pp. 106-107.

¹⁰ Lyman T. Coppins (1874-1943), a well-known interior decorator in Buffalo, took charge of decorating the clubrooms. Presumably, Coppins painted the various inscriptions in Gothic lettering and, perhaps with Lyman, choose the furniture, many pieces of which still exist at the club. (A scheme for arranging the furniture, possibly by Coppins, is penciled onto Bley & Lyman's plan #7A.) Furniture came from the Johnston-Kurtz Furniture Company of Buffalo.

¹¹ *Forty Years, op. cit.*, p. 136.

Saturn Club
Erie County, New York

**NATIONAL REGISTER OF HISTORIC PLACES
CONTINUATION SHEET**

Section number 9 Page 1

Bibliography

Books and Articles

"Bartlett, Lucius E., 84, Dies; Noted as Lithographer," *Buffalo Evening News*, January 26, 1945, in *Local Biographies* scrapbook, series 13, p. 13, Buffalo and Erie County Public Library, local history division.

"Bartlett, L.E., Dies; Noted as Lithographer," *Buffalo Courier Express*, January 27, 1945, in *Local Biographies* scrapbook, series 13, p.13, Buffalo and Erie County Public Library, local history division.

"Beautiful New Home of the Saturn Club," *Buffalo Times*, November 5, 1922, photogravure section, p.3.

Clubs, Associations and Fraternal Organizations of Buffalo scrapbook, vol. 4, pp. 47-96, Buffalo and Erie County Public Library, local history division.

"Coppins, Lyman T., Decorator, Dies," *Buffalo Courier Express*, January 21, 1943, p. 3.

"Duane Lyman Dies: Dean of Architects," *Buffalo Courier-Express*, May 1, 1966, p.B6

Forty Years, 1885-1925. Buffalo: Saturn Club, 1925.

"Francis, W.C., Dies; Painted Bank Murals," *Buffalo Courier Express*, September 9, 1945, sec. 5, p. 3.

Goodyear, George F. *One Hundred Years, 1885-1985*. Buffalo: Saturn Club, 1985.

Grant, Ian. "Clubs," *Grove Dictionary of Art*. New York: Oxford University Press, 2004.

Historical Sketch of the Saturn Club of Buffalo. Buffalo: Saturn Club, 1922.

Kowsky, Francis R. "Delaware Avenue," *The Grand American Avenue, 1850-1920*. Edited by J. Cigliano and S. B. Landau. San Francisco: Pomegranate Books, 1994, pp. 35-64.

Lejeune, A, and Lewis, M.. *The Gentlemen's Clubs of London*. London: Murray, 1979.

Lewis, Michael J. *The Gothic Revival*. New York, Thames & Hudson, 2002.

Licata, Elizabeth. "The Ever-Evolving Saturn Club," *Buffalo Spree* (Nov.-Dec., 2001), pp. 7-11.

Loth, Calder, and Sadler, Julius Trousdale. *The Only Proper Style: Gothic Architecture in America*. Boston: New York Graphic Society, 1975.

"New Home of the Saturn Club," *Buffalo Commercial Advertiser*, September 13, 1922, p. 13.

Saturn Club
Erie County, New York

**NATIONAL REGISTER OF HISTORIC PLACES
CONTINUATION SHEET**

Section number 9 Page 2

Reisem, Richard, and Olnek, Andy. *Classic Buffalo: A Heritage of Distinguished Architecture*. Buffalo: Canisius College Press, 1999.

“Saturn Club,” *Buffalo Sunday Express*, November 20, 1922, ill., sec. 2, p. 6. (This article in the photogravure section of the paper reproduces several Bley & Lyman drawings, dated March 1921, of the exterior and interior of the new building.)

“Saturn Club Flits to its Luxurious New Home,” *Buffalo Times*, October 20, 1922, sec. 5, p. 3.

“Saturn Club Lays Cornerstone for its \$500,000 Home,” *Buffalo Courier-Express*, October 22, 1921, p. 7.

“Saturn Club Orbit,” *Buffalo Commercial Advertiser*, December 13, 1890, p. 11.

“Saturn Club Spending \$1 Million on Renovation,” *Business First*, February 193, 2002, p. 3.

Smith, H. Katherine. “Saturn Club Ever Abode of Pranks, Poetry,” *Buffalo Courier-Express*, January 10, 1932, sec. 9, p. 1.

“To Lay Corner Stone of New Saturn Club,” *Buffalo Commercial Advertiser*, October 21, 1921, p. 12.

Other Materials in Possession of the Saturn Club

Almy, Frederic. “Farewell to old Saturn Club,” October 21, 1922 (typescript).

Saturn Club Memorabilia, scrapbooks, vols. 1-6 (1886-1967)

Lansing, Bley and Lyman, Architects. *Proposed Building for the Saturn Club of Buffalo*, unpublished pamphlet, 1917.

“Locker Room Addition.” Three sheets of blue prints from Bley & Lyman dated July 21, 1929.

The following numbered and dated architectural plans bearing the stamp of Bley & Lyman, Architects, are in the club’s business office:

- 1A. “Revised Plot Plan,” (dated 7-13-21)
2. “Foundation Plan” (dated 6-8-21)
3. “Footing Sections—North and South” (dated 6-8-21)
4. “Footing Sections—East and West” (dated 6-8-21)

*Saturn Club
Erie County, New York*

**NATIONAL REGISTER OF HISTORIC PLACES
CONTINUATION SHEET**

Section number 9 Page 3

- 5A. "Revised Basement Floor Plan" (dated 6-23-21 with modification dated 7-12-21 and 9-14-21)
- 7A. "Revised First Floor Plan; Furniture Symbols" (dated 7-12-21 and 9-14-21)
- 8. "First Floor Plan; Second Floor Framing" (dated 6-8-21; revised 9-14-21)
- 11A. "Revised Third Floor Plan" (dated 6-23-21)
- 14A. "Revision of Framing, East End Athletic Wing" (undated)
- 17. "South Elevation; West Elevation:" (dated 6-8-21)
- 18. "East Elevation; North Elevation" (dated 6-8-21)
- 20. "Alternative Design, Entrance Court to Main Hall; Court Elevation Looking North; Court Elevation of Grille: Section on Line C-C" (dated 6-8-21)

Web Sites

<http://ah.bfn.org/a/del/977/> (Buffalo as an Architectural Museum)

www.saturnclub.org

Saturn Club
Name of Property

Erie County, New York
County and State

10. Geographical Data

Acreege of Property 1.69 acres

UTM References

(Place additional boundaries of the property on a continuation sheet.)

1 17 673850 4752880
Zone Easting Northing

2
Zone Easting Northing

3
Zone Easting Northing

4
Zone Easting Northing

See continuation sheet

Verbal Boundary Description

(Describe the boundaries of the property on a continuation sheet.)

Boundary Justification

(Explain why the boundaries were selected on a continuation sheet.)

11. Form Prepared By

name/title Claire L. Ross Program Analyst (Consultant: Dr. Francis Kowsky drafted nomination)
organization NYS Office of Parks, Recreation and Historic Preservation date January 4, 2005
street & number Peebles Island, P. O. Box 189 telephone 518-237-8643
city or town Waterford state NY zip code 12188

Additional Documentation

Submit the following items with the completed form:

Continuation Sheets

Maps

- A **USGS map** (7.5 or 15 minute series) indicating the property's location.
- A **Sketch map** for historic districts and properties having large acreage or numerous resources.

Photographs

Representative black and **white photographs** of the property.

Additional items

(Check with the SHPO or FPO for any additional items)

Property Owner

(Complete this item at the request of SHPO or FPO.)

name/title Dean William J. Williamson, Jr., Saturn Club
street & number 977 Delaware Avenue telephone 716-884-8800
city or town Buffalo state NY zip code 14209

Paperwork Reduction Act Statement: This information is being collected for applications to the National Register of Historic Places to nominate properties for listing or determine eligibility for listing, to list properties, and to amend existing listings. Response to this request is required to obtain a benefit in accordance with the National Historic Preservation Act, as amended (16 U.S.C. 470 *et seq.*)

Estimated Burden Statement: Public reporting burden for this form is estimated to average 18.1 hours per response including time for reviewing instructions, gathering and maintaining data, and completing and reviewing the form. Direct comments regarding this burden estimate or any aspect of this form to the Chief, Administrative Services Division, National Park Service, P.O. Box 37127, Washington, DC 20013-7127; and the Office of Management and Budget, Paperwork Reductions Projects (1024-0018), Washington, DC 20503.

Saturn Club
Erie County, New York

**NATIONAL REGISTER OF HISTORIC PLACES
CONTINUATION SHEET**

Section number 10 Page 1

Geographical Data:

Verbal Boundary Description:

The boundary for the Saturn Club, 977 Delaware Avenue, Buffalo, New York is shown as a heavy black line on the accompanying Buffalo City Tax Map, map index number 100.47, scale: 1" to 50'.

Boundary Justification:

The boundary for the nomination has been drawn to coincide with the current legal lot line for the property as drawn on the Buffalo City Tax Map.

*Saturn Club
Erie County, New York*

**NATIONAL REGISTER OF HISTORIC PLACES
CONTINUATION SHEET**

Section number 11 Form Prepared By: Page 1

National Register Nomination Prepared By:

Dr. Francis R. Kowsky
Consultant
62 Niagara Falls Boulevard
Buffalo, New York 14214

Saturn Club
Erie County, New York

**NATIONAL REGISTER OF HISTORIC PLACES
CONTINUATION SHEET**

Section number PHOTOGRAPHS Page 1

Name of Property: Saturn Club

Location, County, State: 977 Delaware Avenue, Buffalo, New York (Erie)

Photographs by: Dr. Francis R. Kowsky, 1/22/05

Negatives at: 62 Niagara Falls Boulevard, Buffalo, New York 14214


Key to Photographs:

1. Façade view from the northwest.
2. View of the east wind, (housing the Grill) of the inner court.
3. View of dining room bay window in the east end of the north wing.
4. View of the entrance lobby and vestibule.
5. View of main hall corridor in the west wing.
6. View of bay window northwest corner of the cocktail lounge (former billiard room).
7. View of north wall and balcony of the Lounge.
8. View of the Grill from the south end of the room.



Saturn Club
 977 Delaware Ave.
 Buffalo, N. Y.
 Buffalo City Tax
 Map
 Scale: 1"-50'

Heavy Black line
 is the property
 boundary

PREPARED BY
 AERO SERVICE
 LITHO Philadelphia, Pennsylvania 19138
 PREPARED FOR
 DIVISION OF REAL PROPERTY TAX SERVICES
 ERIE COUNTY, NEW YORK © 1981

NOTES
 THIS MAP WAS PREPARED FOR TAX PURPOSES ONLY
 AND IS NOT TO BE REPRODUCED OR USED
 FOR SURVEYING OR CONVEYANCING.
 MAP CONVERTED TO AUTOCAD DIGITAL FORMAT BY
 ANALYTICAL SURVEYS, INC. IN COOPERATION WITH
 WELER MAPPING INC. NOV. 1998

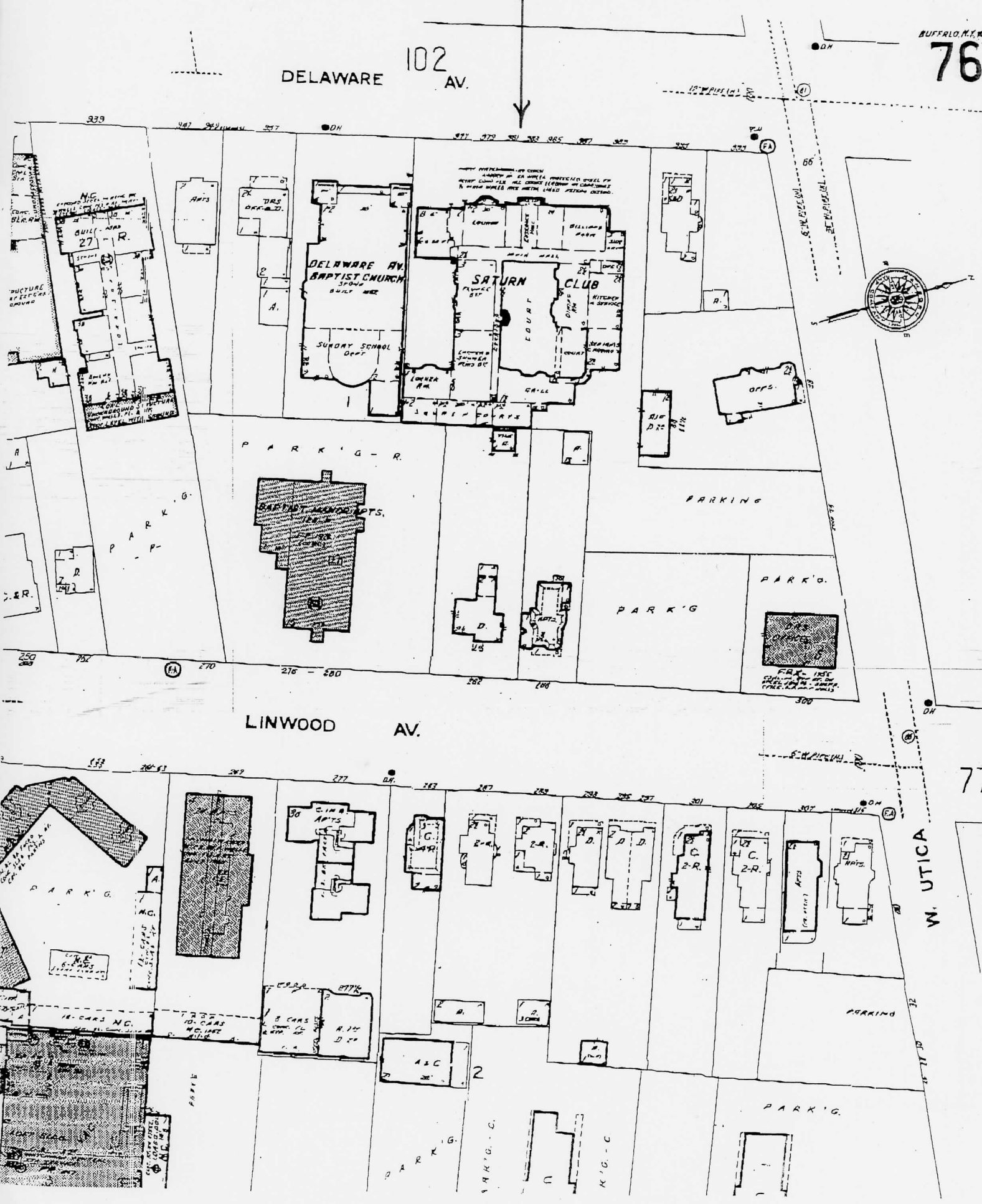
REVISION TABLE	
DATE	MADE BY

SPECIAL DISTRICTS		
SCHOOL	BUFFALO PUBLIC SCHOOL DISTRICT	DRAINAGE
	FIRE	CITY OF BUFFALO FIRE DISTRICT
		SEWER
		WATER

Saturn Club, 977 Delaware Ave., Buffalo, N. Y.

BUFFALO, N. Y., 1901

76



DELAWARE 102 AV.

P A R K I N G - R.

LINWOOD AV.

W. UTICA

71

UNITED STATES DEPARTMENT OF THE INTERIOR
NATIONAL PARK SERVICE

NATIONAL REGISTER OF HISTORIC PLACES
EVALUATION/RETURN SHEET

REQUESTED ACTION: NOMINATION

PROPERTY Saturn Club
NAME:

MULTIPLE
NAME:

STATE & COUNTY: NEW YORK, Erie

DATE RECEIVED: 4/05/05 DATE OF PENDING LIST: 5/11/05
DATE OF 16TH DAY: 5/26/05 DATE OF 45TH DAY: 5/19/05
DATE OF WEEKLY LIST:

REFERENCE NUMBER: 05000444

REASONS FOR REVIEW:

APPEAL: N DATA PROBLEM: N LANDSCAPE: N LESS THAN 50 YEARS: N
OTHER: N PDIL: N PERIOD: N PROGRAM UNAPPROVED: N
REQUEST: N SAMPLE: N SLR DRAFT: N NATIONAL: N

COMMENT WAIVER: N

ACCEPT RETURN REJECT 5/19/05 DATE

ABSTRACT/SUMMARY COMMENTS:

Entered in the
National Register

RECOM./CRITERIA _____

REVIEWER _____ DISCIPLINE _____

TELEPHONE _____ DATE _____

DOCUMENTATION see attached comments Y/N see attached SLR Y/N

If a nomination is returned to the nominating authority, the nomination is no longer under consideration by the NPS.



1
Satur nClub

977 Delaware Ave.

Buffalo, New York

Erie County

Photo by: Dr. Francis Kowsky, 1-22-05

Neg # : 62 Niagara Falls Blvd.,
Buffalo, N.Y. 14214

F0000, 01/25/05
View: From the north west facade.



2

Saturn Club

977 Delaware Ave

Buffalo, N.Y. 14209

Erie County

042713-042713-P1-2004
Photos by: Dr. Francis Kowsky, 1-22-05

Negat: 62 Niagara Falls Blvd., Buffalo,
N.Y. 14214

0000-01-15-05
View: East wing (housing the Grill)
of the inner court.



3 Saturn Club
977 Delaware Ave.
Buffalo, N.Y. 14209

Eric County

Photo by Dr. Francis Kosky, 1-22-05

Neg. # 62 Niagara Falls Blvd, Buffalo,
N.Y. 14214

View: Dining Room bay window
in the east end of the north
wing.



4 Saturn Club
974 Delaware Ave.
Buffalo, N.Y. 14209

Erle County

Photo by: Dr. Francis Kowosky, 1-22-05

Negat: 62 Niagara Falls Blvd.,
Buffalo, N.Y. 14214

View: Interior entrance lobby
and vestibule.



5 Saturn Club
977 Delaware Ave
Buffalo, N.Y. 14209
Erie County

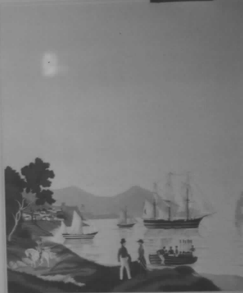
042713-042713-R1-E007
Photo by: Dr. Francis Koscky; 1-22-25
Negat: La Niogara Falls Blvd., Buffalo,
N.Y. 14214

00000-01-25-05
View: Inter, Main Hall corridor
in the west wing.



"Sir said Herbert Spencer" to play a good game of
billiards is the mark of a well rounded education.

to play too good a game of billiards
is the mark of an ill spent youth.



6 Saturn Club
977 Delaware Ave
Buffalo, N.Y. 14209

Erie County

Photo by: Dr. Francis Kosky, 1-22-85

Negat: 62 Niagara Falls Blvd.,
Buffalo, N.Y. 14214

View: Interior of bay window
north west corner of the cocktail
lounge (former billiard room).



7 Saturn Club
977 Delaware Ave
Buffalo, N.Y. 14209
Erie County

Photo by: Dr. Francis Kowsky, 1-22-05

Neg # 62 Niagara Falls Blvd.,
Buffalo, N.Y. 14214

View: Interior, north wall and
balcony of the Lounge.



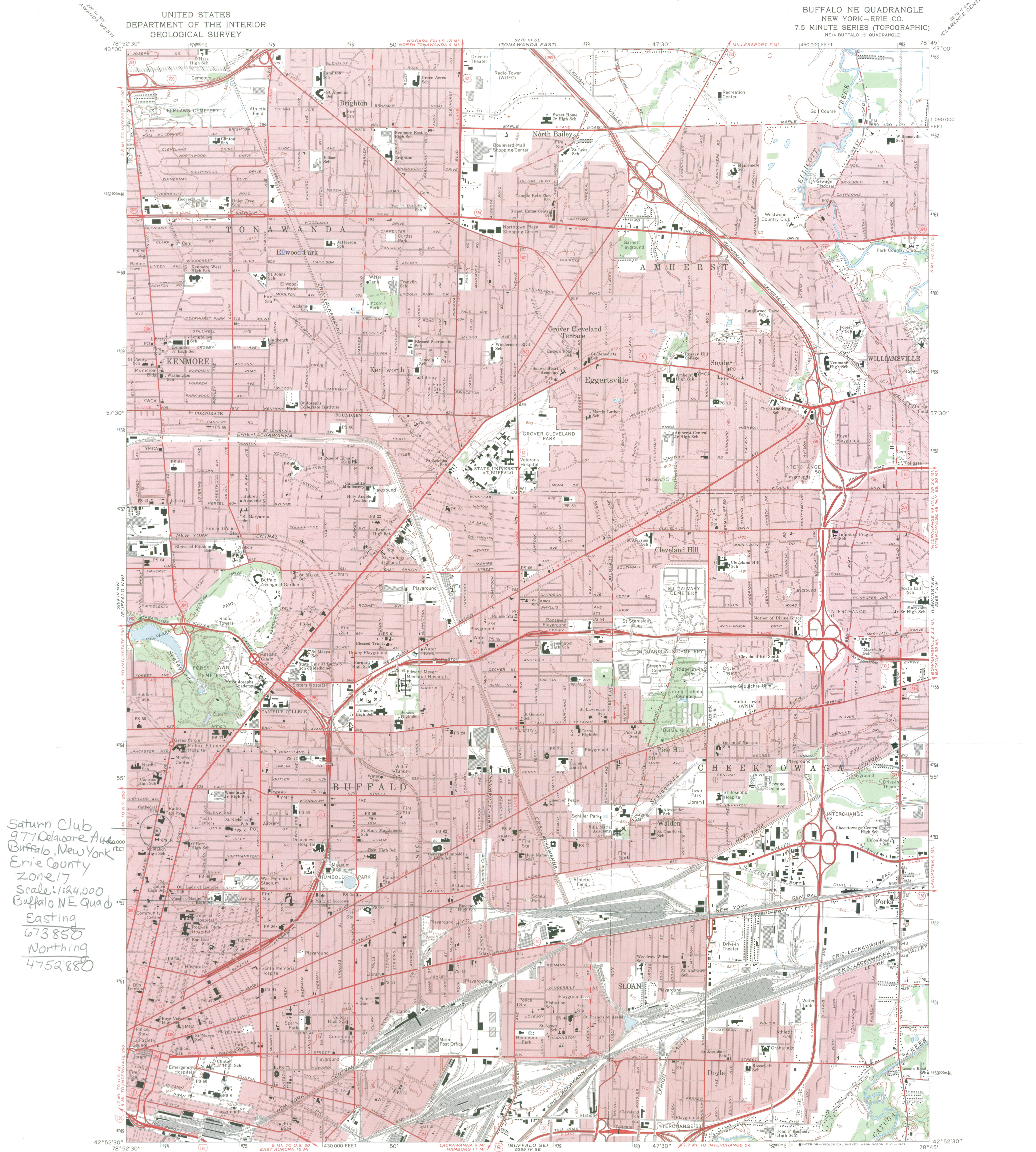
8 Satarn Club
977 Delaware Ave.
Buffalo, N.Y. 14209

Eric County

Photos by: Dr. Francis Kowalsky, 1-22-05

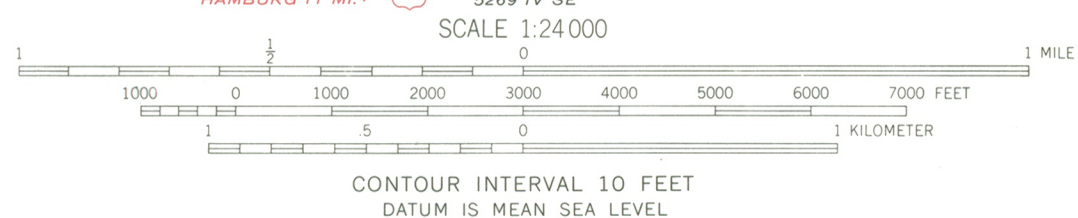
Negat: 62 Niagara Falls Blvd., Buffalo,
N.Y. ~~14209~~ 14214

View: Interior Grill from the
south end of the room.



Saturn Club
977 Delaware Ave
Buffalo, New York
Erie County
Zone 17
Scale: 1:24,000
Buffalo NE Quad
Easting
673850
Northing
4752880

Mapped, edited, and published by the Geological Survey in cooperation with New York Department of Public Works Control by USGS, USCGS, USCE, and U.S. Lake Survey Planimetry compiled by U.S. Corps of Engineers from aerial photographs taken 1942. Topography by planetable surveys 1948. Revised 1965
Polyconic projection. 1927 North American datum 10,000-foot grid based on New York coordinate system, west zone 1000-meter Universal Transverse Mercator grid ticks, zone 17, shown in blue
Red tint indicates areas in which only landmark buildings are shown



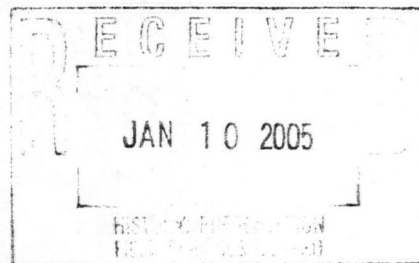
ROAD CLASSIFICATION

Heavy-duty	Light-duty
Medium-duty	Unimproved dirt
Interstate Route	U.S. Route
	State Route



BUFFALO NE, N. Y.
NE/4 BUFFALO 15' QUADRANGLE
N4252.5-W7845/7.5

THIS MAP COMPLIES WITH NATIONAL MAP ACCURACY STANDARDS
FOR SALE BY U. S. GEOLOGICAL SURVEY, WASHINGTON, D. C. 20242
A FOLDER DESCRIBING TOPOGRAPHIC MAPS AND SYMBOLS IS AVAILABLE ON REQUEST



STATEMENT OF OWNER SUPPORT

Before an individual nomination proposal will be reviewed or nominated, the owner(s) of record must sign and date the following statement:

X The Saturn Club, am the owner of the property at
(print or type owner name)

977 Delaware ave Buffalo, NY 14209
(street number and name, city, village or town, state of nominated property)

I support its consideration and inclusion in the State and National Registers of Historic Places.

William J. Williamson Jr 1/6/05
William J. Williamson Jr (signature and date)
Dean

Same as above

(mailing address)

CITY OF BUFFALO
OFFICE OF THE MAYOR

JAN 11 2005

ANTHONY M. MASIELLO
MAYOR

January 10, 2005

Claire L. Ross, National Register Program Analyst
NYS Office of Parks, Recreation and Historic Preservation
Historic Preservation Field Services Bureau
Peebles Island, P.O. Box 189
Waterford, New York 12188-0189

Re: **The Saturn Club**
977 Delaware Avenue
Buffalo, New York, County of Erie

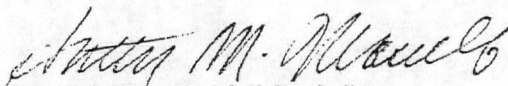
The Buffalo Electric Vehicle Company Building
1219-1247 Main Street
Buffalo, New York, County of Erie

Dear Ms. Ross:

I concur with the decision of the Buffalo Preservation Board to waive 30-days of Buffalo's 60-day comment period so that your office has had the opportunity to refine the draft nominations of the above captioned properties to the State and National Registers of Historic Places.

If you have any questions concerning this matter, please do not hesitate to contact me at (716) 851-4841.

Sincerely,


Anthony M. Masiello
Mayor

AMM/sa

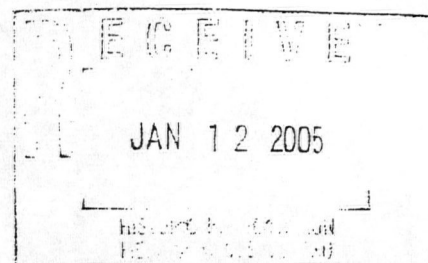


BUFFALO PRESERVATION BOARD

901 City Hall
Buffalo, New York 14202
(716) 851-5029

Thomas W. Marchese, Secretary

January 10, 2005



Claire L. Ross, National Register Program Analyst
NYS Office of Parks, Recreation and Historic Preservation
Historic Preservation Field Services Bureau
Peebles Island, P.O. Box 189
Waterford, New York 12188-0189

Re: The Saturn Club
977 Delaware Avenue
Buffalo, New York, County of Erie

The Buffalo Electric Vehicle Company Building
1219-1247 Main Street
Buffalo, New York, County of Erie

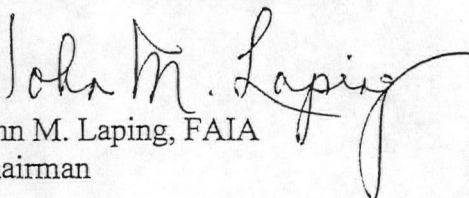
Dear Ms. Ross:

At its meeting on January 6, 2005, the Buffalo Preservation Board approved the request from your office to waive 30-days of Buffalo's 60-day comment period so that your office has had the opportunity to refine the draft nominations of the above captioned properties to the State and National Registers of Historic Places.

If you have any questions concerning this matter, please do not hesitate to contact Thomas W. Marchese, Executive Secretary, at (716) 851-5029.

Sincerely,

Buffalo Preservation Board


John M. Laping, FAIA
Chairman

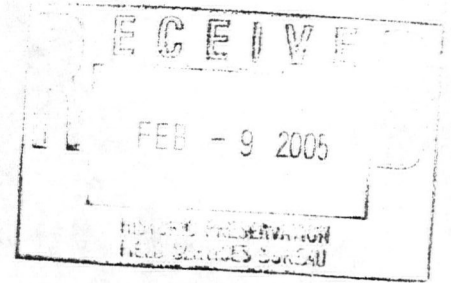
JML: tm



CITY OF BUFFALO
OFFICE OF THE MAYOR

ANTHONY M. MASIELLO
MAYOR

February 7, 2005



Clair L. Ross
National Register Program Analyst
NYS Office of Parks, Recreation and Historic Preservation
Historic Preservation Field Services Bureau
Peebles Island, P.O. Box 189
Waterford, NY 12188-0189

**RE: The Saturn Club
977 Delaware Avenue
Buffalo, New York, Erie County**

Dear Ms. Ross:

I concur with the Buffalo Preservation Board's support for the nomination of the property listed above to the State and National Registers of Historic Places.

The Board, after due consideration, finds that the property met the following criteria established for listing on the State and National Registers of Historic Places.

- That the Saturn Club is associated with events that have made significant contribution to the broad patterns of our history.
- That the Saturn Club embodies the distinctive characteristics of a type, period, or method of construction or represents the work of a master, or possesses high artistic values, or represents a significant and distinguishable entity whose components lack individual distinction.

I am in support of the nomination of the Saturn Club to the State of National Registers of Historic Places.

Sincerely,

Anthony M. Masiello
Mayor

AMM/gk

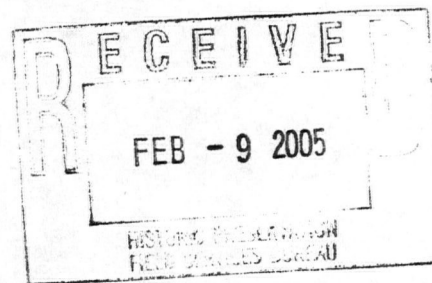


BUFFALO PRESERVATION BOARD

901 City Hall
Buffalo, New York 14202
(716) 851-5029

Thomas W. Marchese, Secretary

February 7, 2005



Claire L. Ross, National Register Program Analyst
NYS Office of Parks, Recreation and Historic Preservation
Historic Preservation Field Services Bureau
Peebles Island, P.O. Box 189
Waterford, New York 12188-0189

**Re: The Saturn Club
 977 Delaware Avenue
 Buffalo, New York, County of Erie**

Dear Ms. Ross:

At its meeting on February 3, 2005, the Buffalo Preservation Board met to consider the nomination of the property listed above to the State and National Registers of Historic Places.

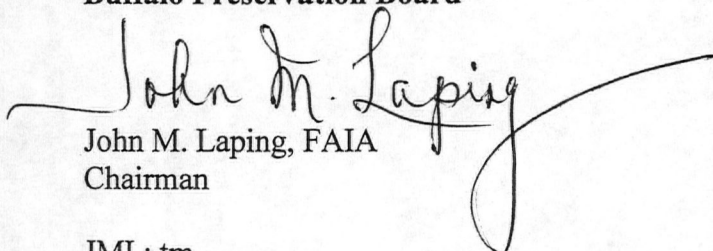
The Board after due consideration, finds that the property met the following criteria established for listing on the State and National Registers of Historic Places.

- That the Saturn Club is associated with events that have made a significant contribution to the broad patterns of our history.
- That the Saturn Club embodies the distinctive characteristics of a type, period, or method of construction or represents the work of a master, or possesses high artistic values, or represents a significant and distinguishable entity whose components lack individual distinction.

Consequently, we support the nomination of the Saturn Club to the State and National Registers of Historic Places.

Sincerely,

Buffalo Preservation Board

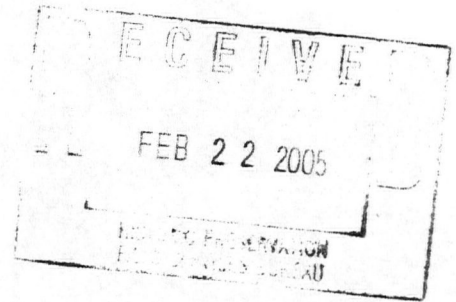

John M. Laping, FAIA
Chairman

JML: tm



THE SATURN CLUB

February 15, 2005



New York State Office of Parks, Recreation and Historic Preservation
Historic Preservation Field Services Bureau
Claire Ross, Director
Peebles Island
PO Box 189
Waterford NY 12188-0189

Dear Ms. Ross:

This letter is in reply to the letter addressed to me from Ruth L. Pierpont dated February 8, 2005.

This is to officially inform the New York State Office of Parks, Recreation and Historic Preservation that by vote of the Board of Directors of The Saturn Club it was unanimously agreed without objection to proceed to permit the Saturn Club building, of which we are the owner, to be listed in the National and State Registers of Historic Places.

Should you need any further information, please feel free to contact me.

Very truly yours,

William J. Williamson, Jr.
Dean

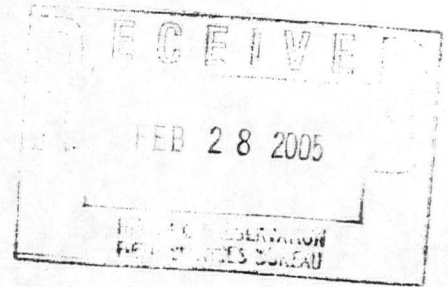
wjw/lmr



THE SATURN CLUB

February 23, 2005

Ms. Ruth L. Pierpont
Director
Historical Preservation Society
Field Service Bureau
Peeples Island
PO Box 189
Waterford, New York 12118-0189



Dear Ms. Pierpont,

I was very excited to receive your letter of February 8, 2005 informing me that The Saturn club at 977 Delaware Avenue in Buffalo, New York was to be considered by the State Review Board for nomination to the National and State Registers of Historic Places.

For the past five years I have been the General Manager of The Saturn Club and I have dreamed of the day that this event would occur. As a student of history and architecture there are few buildings with such a rich history and fine craftsmanship. I support the nomination 100%.

If I can be of further assistance with this process, please do not hesitate to contact me.

Sincerely,

Vincent J. C. Tracy, CCM
General Manager