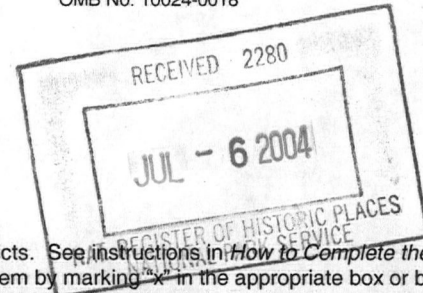


United States Department of the Interior
National Park Service



National Register of Historic Places Registration Form

This form is for use in nominating or requesting determinations for individual properties and districts. See instructions in *How to Complete the National Register of Historic Places Registration Form* (National Register Bulletin 16A). Complete each item by marking "X" in the appropriate box or by entering the information requested. If an item does not apply to the property being documented, enter "N/A" for "not applicable." For functions, architectural classification, materials, and areas of significance, enter only categories and subcategories from the instructions. Place additional entries and narrative items on continuation sheets (NPS Form 10-900a). Use a typewriter, word processor, or computer to complete all items.

1. Name of Property

historic name Maple Grove Cemetery

other names/site number _____

2. Location

street & number 83-15 Kew Gardens Road [] not for publication

city or town Kew Gardens [] vicinity

state New York code NY county Queens code 081 zip code 11415-0086

3. State/Federal Agency Certification

As the designated authority under the National Historic Preservation Act, as amended, I hereby certify that this [X] nomination [] request for determination of eligibility meets the documentation standards for registering properties in the National Register of Historic Places and meets the procedural and professional requirements as set forth in 36 CFR Part 60. In my opinion, the property [X] meets [] does not meet the National Register criteria. I recommend that this property be considered significant [] nationally [] statewide [X] locally. ([] see continuation sheet for additional comments.)

Maria Carla SAPO
Signature of certifying official/Title

6/21/04
Date

New York State Office of Parks, Recreation & Historic Preservation
State or Federal agency and bureau

In my opinion, the property [] meets [] does not meet the National Register criteria. ([] see continuation sheet for additional comments.)

Signature of certifying official/Title

Date

State or Federal agency and bureau

4. National Park Service Certification

I hereby certify that the property is:

- entered in the National Register [] see continuation sheet
- [] determined eligible for the National Register [] see continuation sheet
- [] determined not eligible for the National Register
- [] removed from the National Register
- [] other (explain) _____

Robert H. Ball
Signature of the Keeper

8/20/04
date of action

Maple Grove Cemetery
Name of Property

Queens County, New York
County and State

5. Classification

Ownership of Property
(check as many boxes as apply)

Category of Property
(Check only one box)

Number of Resources within Property
(Do not include previously listed resources in the count)

- private
- public-local
- public-State
- public-Federal

- building(s)
- district
- site
- structure
- object

Contributing	Noncontributing	
<u>1</u>	<u>2</u>	buildings
<u>2</u>	<u>0</u>	sites
<u>10</u>	<u>0</u>	structures
		objects
13	2	TOTAL

Name of related multiple property listing
(Enter "N/A" if property is not part of a multiple property listing)

Number of contributing resources previously listed in the National Register

N/A

N/A

6. Function or Use

Historic Functions
(enter categories from instructions)

Current Functions
(Enter categories from instructions)

FUNERARY/Cemetery

LANDSCAPE

FUNERARY/Cemetery

LANDSCAPE

7. Description

Architectural Classification
(Enter categories from instructions)

Materials
(Enter categories from instructions)

N/A

foundation N/A

walls N/A

roof N/A

other N/A

Narrative Description
(Describe the historic and current condition of the property on one or more continuation sheets)

United States Department of the Interior
National Park Service

National Register of Historic Places
Continuation Sheet

Section 7 Page 1

Maple Grove Cemetery
Name of Property
New York County, New York
County and State

7. Narrative Description

Maple Grove Cemetery is located in Kew Gardens, central Queens County, New York. The 65-acre cemetery is roughly bounded by 83rd Avenue to the north, Queens Boulevard and the Van Wyck Expressway to the east, 86th Road to the south, and Kew Gardens Road to the west. This area is known as "The Backbone of Long Island," due to its hilly topography formed by a glacial terminal moraine. The cemetery consists of two distinct areas developed at different times. Monumental Park which makes up the northern third of the cemetery was laid out in 1875 and exhibits influences of the Rural Cemetery Movement. Though the land for the other section, known as Memorial Park, is part of the original 1875 land acquisition, this section was not opened until 1943. Occupying the southern two-thirds of the cemetery, Memorial Park, as its name denotes, is a typical example of twentieth-century memorial park design with brass markers flush to the ground and large lawns.

The plan of the older part of the cemetery is irregular and incorporates a labyrinth of panoramic winding roads over hilly terrain that form distinct burial areas. The areas that make up Monumental Park are named Prospect, Maple, Central, Linden, Summit, Border, and South Border. The main entrance to Monumental Park is through the original stone entrance posts at Kew Gardens Road. As one enters the main gates one is immediately aware of the cemetery's mature trees, many of which predate the cemetery. The trees and shrubs that shade the cemetery are mostly Oak, Black Birch, Eastern White Pine, Japanese Red Maple, Goldenrod Tree, as well as Weeping Hydrangea trees and Old Roses. There are footpaths by some graves, and many different types of shrubs and plantings. The Summit section is notable for its cobblestone retaining wall - 150 feet long, 3 feet thick, 2 and 1/2 feet above ground at the lowest point, and 10 feet at the highest point. In many areas, the roads are at a lower level than the burial areas so stone steps provide access to the plots. Monumental Park contains stone monuments, statues, headstones, and a small number of mausolea.

Though the newer section - Memorial Park - continues the curvilinear street plan of the older section, the names of the burial areas are decidedly less romantic: Sections A, B (aka Presidential Circle), C, D, E, F, G, H, I, J, K and L. Carefully placed groups of trees and shrubs help to define the various lawn areas. The topography in Memorial Park is fairly level, unlike Monumental Park. The land here was excavated and regraded forming large open lawns. While the burial sections are uncluttered many feature a visual focal point including circular peristyles (by Erkins Studio) in Section I, an Italian Florentine well head with cherubs (by Erkins Studio) in Section K, a rose garden in Section L, a formal flagstone path with central reflecting orb ("Silver Sphere") in Section G, and a Peter Pan Garden with sculpture in Section H. The entrance gates at Queens Boulevard open to two wide roads with a grassy median. On one side is the Bell Garden, which has the original bell from the Administration Building as a center piece, and the other is Liberty Garden which has a memorial to the centennial of the Statue of Liberty. These two small hilly sections allow tombstones, which are all the same size and organized in a linear pattern, the rest of Memorial Park has flush bronze markers. Though Memorial Park has elements of classical formality it also has some picturesque elements like the irregular-shaped lake with waterfall and willow trees in Section C. The Presidential Circle (Section B) is a tribute to the past presidents of Maple Grove as well as a memorial to the 21 people interred at Maple Grove that died on September 11th, 2001 at the World Trade Center disaster. There is a large flagpole and around the base with 21 star lights.

**United States Department of the Interior
National Park Service**

**National Register of Historic Places
Continuation Sheet**

Section 7 Page 2

Maple Grove Cemetery
Name of Property
New York County, New York
County and State

The estimated count of interred at Maple Grove is approximately 83,000. Of this number roughly 30,000 burials are in the older section with the remaining in the newer section. Monumental is full to capacity except for active family plots and unused plots that have been sold back to the cemetery.

The gravemarkers in Monumental Park represent a wide range of styles, materials, craftsmanship, and designs collectively chronicling the history of funerary art and customs in the community. They represent the work of craftsmen and artists who captured the essence of the society's views and perceptions of death during the historic period. The stone markers are made of granite, marble, and polished granite. Many of the stones were quarried from the cemetery's former quarry, which was located along the east side of the cemetery. There are also simpler stones of brownstone and limestone, in the form of monuments and tablets. Some of the stones have been moved here from pre-1875 gravesites.

Much of the significant funerary art found in the cemetery dates from the late-nineteenth and early twentieth century and reflects the influences of the romantic movement in popular literature and art during the Victorian period. Characterized by elements of nature, strong sentimentality and a fascination with antiquities, funerary art of the period displays a wide variety of elaborate code-like elements designed to express these ideals. Popular motifs of the period that are exhibited in Maple Grove include urns (symbol of the soul), angels (guide to Heaven), and garlands (victory in death). Many of the Victorian-era markers are Greek, Egyptian and Gothic in inspiration. The grave markers that date from the early- to mid-twentieth century are generally simpler in design and stripped of the elaborate ornamentation and sentimentality common to Victorian markers. Interest in classical formality, especially that inspired by Greek architecture, became popular for twentieth-century grave stones. Several of the markers from the 1930s show influences of the Art Deco.

Contributing buildings and structures on the cemetery grounds include the Administration Building, a receiving vault, and a small number of mausolea. The Administration Building was designed and built by James E. Ware in 1880. It is located at the main entrance on Kew Gardens Road and the top of Lefferts Boulevard. There are two non-contributing maintenance buildings from the late 1940s and 1960s in Memorial Park.

Though there have been additions to the original Administration Building, it retains sufficient integrity of design. The 1-1/2 story building is built of stone from the cemetery's quarry with wood shingles at the upper floor. This Queen Anne-inspired building is notable for its pyramidal-roofed belltower which originally housed a bell as this building was also used as a chapel early on. (The bell has since been removed and relocated to the Bell Garden in the Memorial Park section of the cemetery.) The original marker with the date "1880" can be seen in the south façade of the Administration Building. In October of 1925, architect W. H. Spaulding made alterations and additions. Further additions were made in 1962 by Architects Ryder, Struppman and Neuman of Jamaica, adding a Mosler vault and file room with the dimensions of 20 feet 6 inches by 28 feet. The one-story bay at the front of the building, where the President's office is located, is also an addition (dimensions of 18 feet by 16 feet 8 inches). The material used to surface the front extension is stucco over brick and concrete. Attached to the vault and file room extension is a contributing 1831 blacksmith shop predating the cemetery, and now used for maintenance. This two-story rustic building is made of rough hewn stone and the interior still retains the wood beams throughout. Attached to the east side of the blacksmith shop is a non-historic (1975) garage.

**United States Department of the Interior
National Park Service**

**National Register of Historic Places
Continuation Sheet**

Section 7 Page 3

Maple Grove Cemetery
Name of Property
New York County, New York
County and State

The receiving vault, also designed by Ware is located in the Linden section of the cemetery. Built into a hillside, the vault has stone retaining walls, a large round-arched entrance surround in stone, and a brick wall and stone parapet with the date "1875." The original doors for the vault have been replaced with a modern overhead garage door.

In addition to possessing features significant in landscape architecture, funerary design, and architecture, Maple Grove Cemetery contains the graves of many prominent historical figures of the local community.

Maple Grove Cemetery

Queens County, New York

Name of Property

County and State

8. Statement of Significance

Applicable National Register Criteria

(Mark "x" in one or more boxes for the criteria qualifying the property for National Register listing.)

- A** Property associated with events that have made a significant contribution to the broad patterns of our history.
- B** Property is associated with the lives of persons significant in our past.
- C** Property embodies the distinctive characteristics of a type, period, or method of construction or that represents the work of a master, or possesses high artistic values, or represents a significant and distinguishable entity whose components lack individual distinction.
- D** Property has yielded, or is likely to yield, information important in prehistory or history.

Criteria Considerations

(Mark "x" in all boxes that apply.)

- A** owned by a religious institution or used for religious purposes.
- B** removed from its original location
- C** a birthplace or grave
- D** a cemetery
- E** a reconstructed building, object, or structure
- F** a commemorative property
- G** less than 50 years of age or achieved significance within the past 50 years

Narrative Statement of Significance

(Explain the significance of the property on one or more continuation sheets.)

9. Major Bibliographical References

Bibliography

(Cite the books, articles, and other sources used in preparing this form on one or more continuation sheets.)

Previous documentation on file (NPS):

- preliminary determination of individual listing (36 CFR 67) has been requested.
- previously listed in the National Register
- previously determined eligible by the National Register
- designated a National Historic Landmark
- recorded by historic American Building Survey # _____
- recorded by Historic American Engineering Record # _____

Areas of Significance:

(Enter categories from instructions)

- Art
- Landscape Architecture
- Architecture
- Social History

Period of Significance:

1875-1947

Significant Dates:

- 1875
- 1936
- 1943

Significant Person:

N/A

Cultural Affiliation:

N/A

Architect/Builder:

James E. Ware

George W. McClure & Son

United States Department of the Interior
National Park Service

National Register of Historic Places
Continuation Sheet

Section 8 Page 1

Maple Grove Cemetery
Name of Property
Queens County, New York
County and State

8. Statement of Significance

Introduction

Maple Grove Cemetery in Kew Gardens, central Queens County, is significant for embodying the characteristics of two popular landscape design ethics for cemeteries in America. The oldest developed section of the cemetery, Monumental Park, dating from 1875, exhibits the influences of the rural cemetery movement of the nineteenth century. The aptly-named Memorial Park, opened in 1943, is a typical example of memorial park cemetery design of the twentieth century. On the grounds of Maple Grove are examples of cemetery architecture and funerary art that reflect the changing aesthetic tastes and social attitudes about death from the founding of the cemetery in the Victorian period up to the modern era. The period of significance for Maple Grove Cemetery spans from 1875 to 1947. The cemetery derives additional historical significance as the final resting place for many of the area's most prominent citizens.

History of Maple Grove

Maple Grove, a non-sectarian cemetery, was organized in 1875. Planning for the cemetery dates to about 1869 when six businessmen from Brooklyn acquired about 75 acres of undeveloped land for the cemetery from Mrs. Mary A. Webb. An agreement was signed that gave Mrs. Webb one half the proceeds of the sale of burial plots in the planned cemetery. Additional parcels were also acquired from George Nostrand and Abraham K. Fleet. The location was chosen to ensure a strictly rural cemetery, and at the same time afford convenient transportation to a growing urban population. The trip via Long Island Railroad from the 34th Street Ferry took twenty minutes to the Maple Grove Station. A quarry was established on the Hoffman Boulevard side of the cemetery (now Queens Blvd.) which was very lucrative for the cemetery association. Mr. John Donaldson became the quarryman on the property and paid for the granite and marble he dug from the quarry. Not only did the quarry provide the stone for gravemarkers but much of it was sold to the early builders of homes in Richmond Hill.

Maple Grove Cemetery is historically significant as part of the development of Richmond Hill and later Kew Gardens in central Queens. According to the *Encyclopedia of New York City*:

Much of the area was acquired in 1868 by Albon P. Man, who developed the neighborhood of Richmond Hill to the south, chiefly along Jamaica Avenue, while leaving undeveloped the hilly land to the north. Maple Grove Cemetery on Kew Gardens Road opened in 1875. A station was built for mourners in October and trains stopped there from mid November . . . In the 1890s the executors of Man's estate laid out the Richmond Hill Golf Course on the hilly terrain south of the railroad. This remained in use until it was bisected in 1908 by the main line of the Long Island Rail Road, which had been moved six hundred feet to the south to eliminate a curve. The golf course was then abandoned and a new station was built on Lefferts Boulevard. Man's heirs Alrick Man and Albon Man Jr. decided to lay out a new community and called it at first Kew and then Kew Gardens after the well-known botanical gardens in England. The architects of the development favored English and neo-Tudor

United States Department of the Interior
National Park Service

National Register of Historic Places
Continuation Sheet

Section 8 Page 2

Maple Grove Cemetery
Name of Property
Queens County, New York
County and State

styles, which still predominate in many sections. In 1910 the property was sold piecemeal by the estate and during the next few years streets were extended, land graded, and water and sewer pipes installed.¹

The first president of the cemetery was William Sterling Cogswell (1841-1935). He remained the president 60 years until his death, when his son George Cogswell became president. William S. Cogswell was a Lieutenant Colonel who fought in the Civil War battles of Gettysburg and Antietam. He studied law after the war and was admitted to the bar in 1868. He had law offices in Jamaica and Brooklyn for many years. He served as vestryman and warden of Grace Episcopal Church in Jamaica. In 1880 he served as a delegate to the Republican National Convention. Besides his duties as President of Maple Grove Cemetery, Cogswell maintained the duty of recorder of the Loyal Legion, an organization of Civil War officers and their descendants. He spearheaded a major campaign to erect the Soldiers and Sailors Monument in Jamaica.

The earliest section of the cemetery to be developed was the northern third known as Monumental Park. The original plots were laid out and names were chosen. They were Maple, Summit, Prospect, Lake, Ocean, South Border (1879), Hillside, Central and Terrace. The first burial in Maple Grove took place in 1876.² By the 1880's most of the Maple Plot was filled and a large portion of the Prospect section. By 1892 Maple was full, Prospect was three-quarters full, Summit was two-thirds full, and Central and South Border were both half full. Linden and Border - combined from earlier developed plots (Hillside and Ocean) - were created at the same time as the other sections, but these lots filled up last, in the early 1930's through the early 1940's. The original cemetery was roughly 75 acres, and in the 1930's ten acres on the north side of Queens Boulevard (the plot on that side was called Sunnyside) were sold to make way for the subway and the Van Wyck Expressway.

The cemetery was accessible via rail transportation. In 1882 the railroad near Maple Grove was completed, but the new station was soon abandoned and the rails removed due to changes in ownership by the railroad companies. In 1883 the cemetery provided transportation from the Richmond Hill train depot to accommodate visitors. In 1884 the Long Island Railroad relayed rails to the Maple Grove depot and the station was opened. A 1908 booklet on Maple Grove Cemetery mentions the various convenient ways to travel to the cemetery from both Brooklyn and New York. The brochure notes, for example, that "To reach the cemetery from Manhattan, take train at Pennsylvania Station (7th Avenue and 33rd St.) for Kew. There are now forty-eight trains stopping daily at Kew...and running time from New York is only SIXTEEN MINUTES. Excursion ticket forty-eight cents Casket can be placed in rear vestibule of any train. A hearse will be waiting at Kew Station"³

As burial plots in Monumental continued to fill, the cemetery association began planning for Memorial Park in the southern two-thirds of the property in 1936. They commissioned George W. McClure & Son, a landscape architecture firm from Buffalo, to design the new section. Memorial Park opened in 1943 and was completed in 1947 according to landscape plans on file at the cemetery office. The landscape design of Memorial Park represents a reaction against many of the tenets of the nineteenth-century rural cemetery movement.

¹ Vincent Seyfried, entry on Kew Gardens in *The Encyclopedia of New York City* (New Haven: Yale University Press, 1995), p. 635.

² The first burial was Edward H. Sprague, a one-year-old child, who died of smallpox.

³ Booklet on Maple Grove Cemetery, 1908, p. 6.

United States Department of the Interior
National Park Service

National Register of Historic Places
Continuation Sheet

Section 8 Page 3

Maple Grove Cemetery
Name of Property
Queens County, New York
County and State

Monumental Park as an Expression of the Rural Cemetery Movement

Prior to the 1830s there were few if any regularly organized cemetery organizations in this country. The custom at this point was to inter loved ones in churchyards. The long established custom of burying the dead in cemeteries surrounding churches led, eventually, to the realization that organisms carrying cholera, typhoid, tuberculosis and other diseases were being returned to the local water supplies; this proved to be a major consideration in the movement to place cemeteries outside the congested urban areas. The rural cemetery movement also drew upon the English naturalistic landscape movement of the late eighteenth century, with its romanticization of death and mourning and its perfection of the art of artificially improving the land. The rural cemeteries were a response to both the physical and moral ills of urban life. As the crowded cities grew and the need for natural environments flourished, the rural cemetery provided healthful and recreational relief from urbanization. The movement was an outgrowth of prevailing romantic attitudes towards nature, which was thought, in its pure state, to have the power to heal, inspire and instruct. As such, it was the site of the cemetery that was the predominant design element. The rural cemetery also inspired the use of sculpture to commemorate the dead in a way that small, crowded church yards never could. As attitudes about death were modified from views that feared eternal punishment to ones that heralded death as a reunion with God and with loved ones, the corpse was no longer buried and forgotten, but now viewed as an object of sentimental veneration.

In America, the rural cemetery was introduced with the founding of Mt. Auburn Cemetery in Cambridge, Massachusetts (1831), Laurel Hill Cemetery in Philadelphia (1836), and Green-Wood Cemetery in Brooklyn in 1838. In 1847 the New York Legislature passed a general act for the incorporation of rural cemeteries. By 1865 there were 7 rural cemeteries in New York State. Maple Grove Cemetery opened in 1875 as a non-sectarian cemetery.

The location of Maple Grove on a terminal moraine, left over from the Ice Age, provided landscaping that was unsurpassed for a rural cemetery. It stood high above the communities of Richmond Hill and (later) Kew Gardens. The cemetery has rolling hills, winding paths, cobblestone walls, large trees, deciduous shrubbery, weeping hydrangeas, and verdant grass. The overall design of the cemetery represents one of the three most popular landscape ethics of the mid-nineteenth century: the Picturesque (the other two being the Beautiful and the Rustic). Based in part on the English landscape garden idiom, the Picturesque landscape/rural cemetery offered a variety of spatial relationships designed to create a series of landscape paintings or pictures, in direct contrast with the rigid urban grid forms of the time. Both natural and manipulated landforms, as well as indigenous and introduced plants, were used to enframe views and vistas, create pedestrian or vehicular sequences and support and/or display architecture or art.

Funerary Art and Architecture in Monumental Park

The grounds of Monumental Park feature examples of cemetery architecture and funerary art representing the Victorian period of taste for picturesque romanticism and lavish artistic expression. The cemetery contains records in stone of the feelings and attitudes about death as expressed by relatives of the deceased by the families and craftsmen who created the memorials. These feelings are expressed in the design of the memorials,

United States Department of the Interior
National Park Service

National Register of Historic Places
Continuation Sheet

Section 8 Page 4

Maple Grove Cemetery
Name of Property
Queens County, New York
County and State

the materials, size, lettering, and choice of words that are used to remember the dead, as well as by the pastoral setting.

There is a wide variety of grave markers and monuments in terms of size, style, and material. Many different decorative carvings, symbols and epitaphs are used. The directions in which the stones face are not in any particular order, but follow the topography of the grounds. The monuments are mostly of Victorian style, made of granite, marble, and polished granite. Many of the gravemarkers are made of stone from the cemetery's quarry. There are also simpler stones of brownstone and limestone, in the form of monuments and tablets. Some of the stones have been moved to Maple Grove from pre-1875 gravesites. The various revival styles of architecture are found among the memorials: Gothic, Greek, and Egyptian. Obelisks were, of course, Egyptian Revival in style and are common throughout the cemetery. In ancient Egypt, the obelisk was erected to commemorate the achievements of a person and to provide a visual reminder of the person and to signify eternal life. As such, markers like the obelisk became symbols for the Christian belief in eternity of the spirit. Among the most poignant graves in the cemetery are those of the babies and children of which there are many. Celtic crosses are not uncommon markers. Some of them are tall and elaborately carved. Draped urns and slabs, denoting a melancholy air, are also frequent. There are also some large boulders marking graves, as in the case of Harry Guess's plot. It was apropos, considering Mr. Guess was a leading figure in the metallurgical deposits.

The monument to the Pyramid Lodge No. 490 F. & A.M., located in Prospect section, is a tall Egyptian Revival monument with surrounding burial plots. The granite monument has battered (slanted) walls, lotus capitals, a cavetto cornice, and a winged sun disk. The monument is engraved with the unveiling date "June 24th, 1893," and features incised carvings of Masonic symbols including a compass.

Many distinctive family burial plots can be found in Maple Grove. Low stone walls or an iron fence usually defines these plots with a monument in the enclosure. The Portong family monument (ca. 1901) is an outstanding example of this type featuring a polished granite base crowned with a classically draped female figure sculpted in marble holding a chain with a large anchor at the end, the symbol of hope. Other examples of family plots and monuments include the Wagner monument (ca. 1930s) with brownstone walls and a monument topped by a draped urn (Roman symbol of death) and the Snedeker family monument in Maple Section with its tall stone obelisk surrounded by small headstones for each of the family members.

One of the most beautiful sculptural pieces in the cemetery is the Edward Burling Briggs and Lulu W. Briggs monument in the Prospect section dating from 1907 with a rough hewn stone base with ivy (symbol of fidelity, eternal life, and undying affection) and ferns (symbol of humility, frankness, and sincerity) surmounted by an angel in classical drapery. Signs and symbols of nature can be found on many of Maple Grove's gravestones. The Willumsen monument (ca. 1901) in Prospect section, for example is a representation of a tree trunk with carvings of ferns (symbol of humility) and vines.

The Rohe monument (ca. 1930s) in Prospect section is a distinguished example of bas relief Art Deco sculpture. It features an angel with pointed arches above. The Radke-Bender monument in the Maple section is another

United States Department of the Interior
National Park Service

National Register of Historic Places
Continuation Sheet

Section 8 Page 5

Maple Grove Cemetery
Name of Property
Queens County, New York
County and State

fine example of Art Deco design. This pink sandstone monument with bas relief carving features an angel with elaborate drapery and flowing hair overlooking a pool of water. This stone, dating from 1929, abounds with Christian symbols including a lily (symbol of purity), cross, and a dove (symbol of peace).

Many of the twentieth-century markers show the simple, clean lines inspired by Greek art and architecture such as the granite marker for Don Marquis which represents a Greek temple with an urn in front. The C.D. Seib headstone (n.d.) in Maple section has a Greek entablature with triglyphs and metopes. This is crowned by a woman in a classical robe holding a wreath in one hand and grapes (symbol of the Blood of Christ) in another.

The granite gravestones in the Linden and Border sections of Monumental Park date from the 1930s and 1940s and are more in line with one another, with a sense of order, and, in the case of the Border section, are all low triangular-shaped slabs.

There are only a few mausoleums, made of granite and marble, with stained glass windows. The most prominent is the Gothic-style Riker Vault built into one of the hills. This mausoleum has a stone wall and a pointed arch entrance with metal grillework. The Bailey mausoleum is also built into the topography with its mounded, tumulus-like top planted with grass. The Mercado mausoleum is a very simple classical-style stone mausoleum with stone steps leading up to it. The cemetery's Receiving Vault, built by architect James E. Ware, is located in the Linden section and is also built into a hill. James E. Ware was also the architect of the Administration Building (1880).

The original agreement between Ware and the cemetery association, indicated that in exchange for designing the administration building, receiving vault, and entrance gates, he would receive \$100.00 and a lot for 12 graves in the cemetery. Ware (d. 1918) and his family are buried on a prominent lot, facing the center of the cemetery in the Prospect Section. According to the New York City Landmarks Preservation Commission:

James Edward Ware (1846-1918), a native New Yorker, studied at the College of the City of New York, was apprenticed to Robert Griffith Hatfield, and began architectural practice in the city in 1869. Ware was an early pioneer in the design of fireproof warehouses; his work in that field included the Manhattan Storage and Warehouse Company's buildings. Ware achieved distinction as a designer of multiple dwellings and was particularly interested in improving the design of tenement buildings, and is best known for his "dumbbell plan" which was a pioneering effort in that field. He achieved recognition for a model tenement design in 1878. A notable example of his work in model housing is the First Avenue Estate constructed for City and Suburban Homes Company. Ware designed many residences in a variety of styles, as well as churches, hotels, and apartment buildings.⁴

Ware has designed many residences in Carnegie Hill and the Upper West Side in Manhattan. He was also credited with designing Halcyon Hall, a Tudor style residence in Millbrook, New Jersey. It was built in 1893 for the publisher H.J. Davison, Jr. Other credits of James E. Ware are the two stone buildings of

⁴ *Expanded Carnegie Hill Historic District Designation Report*. (New York City Landmarks Preservation Commission, December 21, 1993), p. 343.

United States Department of the Interior
National Park Service

National Register of Historic Places
Continuation Sheet

Section 8 Page 6

Maple Grove Cemetery
Name of Property
Queens County, New York
County and State

Mohonk Mountain House in New Paltz (1899-1902) as well as the interior of Madison Avenue Presbyterian Church in New York City (1891).

Memorial Park

As Monumental Park began to fill, plans were made in 1936 for the new section according to letters between George Cogswell, President of Maple Grove and George W. McClure & Son, landscape architects in Buffalo. Memorial Park opened in 1943 with some of the sections finished a few years after the opening. The firm's designs date from 1942 to 1947 and are on file at the cemetery office. George Wilson McClure was the senior member of the firm. It is likely that the plans for Memorial Park were done by his son, George E. McClure (1879-1971) since George W. died in 1939 at the age of 92.⁵ The March 12, 1971 obituary from the *Buffalo Evening News* for George E. McClure states he was also 92 years old at the time of his death.

With his father, George W. McClure, he planned the landscaping for many large estates in Buffalo's Delaware district. Mr. McClure also designed memorial parks, completing about 250 projects around the country. Mr. McClure was a native of Edinburgh, Scotland. He came to the United States in 1889. Mr. McClure was an orchid specialist at Shaw's Botanical Gardens in St. Louis, Mo., where he met his wife, the former Ida Norton. They were married in 1904 and came to Buffalo two years later.⁶

Correspondence between Cogswell and George McClure mention some of the landscape firm's other memorial park designs including Vestal Hills Memorial Park in Binghamton, NY, Crown Hill Memorial Park in Utica, NY, McKean County Memorial Park in Bradford, PA, and Hiram Memorial Gardens in Delaware County, PA. The letters also mention memorial parks by McClure in Marion, Ohio, and Washington, D.C.

The land on which Memorial Park is located is part of the original 75 acres acquired by the cemetery association at its inception though its design is very different from that of the older section. This is perhaps most striking in the more level topography. The land for Memorial Park was excavated and regraded with large stones being removed. Three inches of topsoil were added and spacious, curving drives were laid out to accommodate automobiles. The serpentine road system was reminiscent of rural cemeteries but it did not have the intricate pathways and secondary roads.

The names of each section were given letters rather than names. Sections E and B were finished first. The sections are curved and irregularly shaped, not unlike the plots in the old section, but the landscape here is much more open with expanses of lawn and well-placed groupings of trees and shrubs along the edges. The effect of the smooth lawn is maintained through the use of flush memorial markers rather than upright headstones. Bronze markers were chosen for uniformity, durability, and strength.

⁵ According to the *Buffalo Evening News*, October 9, 1939, George W. McClure "was born in Scotland and trained there. He came to America in 1890 and entered landscape architecture in Buffalo in 1895."

⁶ Obituary for George E. McClure, *Buffalo Evening News*, March 12, 1971.

United States Department of the Interior
National Park Service

National Register of Historic Places
Continuation Sheet

Section 8 Page 7

Maple Grove Cemetery
Name of Property
Queens County, New York
County and State

Memorial Park is an example of a perpetual care lawn cemetery of the twentieth century that represents a transformation of the "rural" cemetery ideal that began in the last half of the nineteenth century. The landscape design de-emphasized monuments in favor of unbroken lawn scenery. Natural beauty and economy were two of the key elements of modern cemetery planning. Rolling terrain and picturesque roughness were removed in favor of a less-cluttered landscape with flatter topography. The use of mechanized equipment made it much easier to efficiently maintain the memorial park cemetery with its level grounds and flush markers.

The landscape designers of memorial parks used nature exclusively as a backdrop. Memorial-park designs were much like twentieth-century suburban landscape designs with wide streets, large lawns, flowering trees, and planting beds. In *The Last Great Necessity: Cemeteries in American History*, David Charles Sloane explores the familiar suburban look of the memorial park.

Memorial parks offered the customer a uniform landscaped garden, which due to the strict regulations, would remain familiar throughout the years. No lot would disappear behind a statue. The landscaping would never overgrow or overflow another lot. The spacious lawns were reminiscent of . . . suburban front lawns The lawns' luxuriance and expanse, suggesting wealth, permanence, and stability, were familiar, easy to maintain, and scenic The memorial park had a natural setting and a pleasing ambiance of hospitality and comfort that reflected American acceptance of the suburb and conquest of the wildness of nature.⁷

Many of the burial sections are developed around a thematic "court" depicting a single feature or sculpture like the Florentine Well in Section K, the Presidential Circle with flagpole in Section B, and the Peter Pan Garden with sculpture in Section H. The plantings were limited to ornamental and shade trees placed around the sections as well as a few shrubs and flower beds surrounding key features.

Attitudes Towards Death

The design of Memorial Park represents a shift in society's attitudes towards death in the twentieth century. Memorial Park's design broke from the Romantic ideas and sentimentality of Monumental Park. Overt symbols of death and religion were less visible in Memorial Park than in Monumental Park. The landscape design of Memorial Park is clearly a reflection of the modern age and society's views towards death.

Philippe Aries has written that the modern attitude toward death, which he defines as the "the interdiction of death in order to preserve happiness," was born in American around the beginning of the twentieth century. . . . According to Aries, Americans refused to suppress everything that reminded them of death and the dead. Americans were willing to mute death's presence, to place the dying in the hands of physicians, to allow funeral directors to orchestrate funerals, and to bury the dead in places that evoked little evidence of death Part of the reason that new attitudes toward the dead developed was that America has had a dramatic drop in the death rate during the twentieth

⁷ David Charles Sloane, *The Last Great Necessity: Cemeteries in American History*, (Baltimore: The Johns Hopkins University Press, 1991), p. 182.

United States Department of the Interior
National Park Service

National Register of Historic Places
Continuation Sheet

Section 8 Page 8

Maple Grove Cemetery
Name of Property
Queens County, New York
County and State

century⁸

A brochure for Memorial Park on file at the cemetery office stresses "...that those who come to visit, depart, not with a feeling of melancholy, but with a lift of spirit."

People Interred in Maple Grove

Many prominent citizens of both Queens and Brooklyn are buried in Maple Grove Cemetery. Many of the descendants of Queens' and Brooklyn's earliest settlers are interred here including members of the Lott, Snedeker, Suydam, Van Siclén, Wycoff, Vanderveer, DeBeviöse, Rapalje, Briggs, and Van Wyck families. The names are intertwined on the gravestones, as many of them being in the same social class intermarried. The Lott and Snedeker families were moved from earlier gravesites in Queens. Lott family members were buried on the Napier Farm, roughly around 109th Street, north of Jamaica Avenue, in Richmond Hill. The land was sold around the time that Albon Platt Man started to develop that area and the remains removed to Maple Grove. Many of the original marble tablets for the Lott families can be seen alongside the next generations' more stylish tombstones.

John J. Sutphin (1835-1907), for which Sutphin Boulevard is named, is in the Maple section. He was a Democratic leader for more than three decades, helped organize the Bank of Jamaica and held that Presidency until his death. He was a generous man, giving away most of his fortune in the amount of over \$1,500,000 to help friends and the needy, including the rent of 55 families. His funeral was one of the largest ever held in Jamaica. He was also one of Maple Grove's first trustees.

Others include Theodore F. Archer (1837-1893), realtor and developer (Archer Avenue); Frederick Dunton, founder of Hollis and involved in the development of that area; Albon Platt Man II who, along with his brother Alrick, engineered and designed the Richmond Hill Golf Course into Kew Gardens; and Frederick Backus, director of the Cord-Meyer Development Corporation, builders of early Forest Hills. Buried here is also Isaac Newton Failor (1851-1925), first principal of 1899 Richmond Hill High School.

Paul Stier (1874-1916), Ridgewood's largest home builder of the early 1900's, is buried in Maple Grove. He built many brick row houses in a neighborhood that became known as "Stierville." His was a partner of the firm Stier & Bauer (August Bauer). Stier was also elected Sheriff of Queens County on January 1, 1916 and was given a sheriff's badge of solid gold with a 4-1/3 carat diamond and 203 small diamonds spelling his name and office. In November 1916 he was called out to answer a complaint about a squatter, Mr. Taff, who refused to vacate property in Whitestone where the former Mary Pickford Movie Studios was located. Taff shot and killed Stier (age 42) with his rifle. A standoff with 40 policemen with revolvers tried to stop Taff, but he continued to shoot a few more men.⁹

⁸ Sloane, p. 173-174. See Philippe Aries, "Forbidden Death," in *Death: Current Perspectives*, ed. Edwin S. Shnidman (Palo Alto, CA: 1976), pp. 77-78.

⁹ New York Times, 1916. Timesweekly Newspaper, Ridgewood, Queens, 2000.

United States Department of the Interior
National Park Service

National Register of Historic Places
Continuation Sheet

Section 8 Page 9

Maple Grove Cemetery
Name of Property
Queens County, New York
County and State

Some prominent architects are interred at Maple Grove. James E. Ware, architect of the cemetery's Administration Building and many New York landmarks has a prominent spot in the cemetery. Other architects buried there are Daniel Stage, who designed many Richmond Hill homes, as well as the Haugaard family, also know as the State Architects and City Planning Commissioners.

Elisabeth Riis, wife of urban reformer, author and photojournalist Jacob Riis, is buried in the Summit section with a small, modest stone, topped with a reclining lamb. Jacob Riis called her his "Lammet" (Lamb in Danish). Elisabeth wrote one of the chapters in Jacob's book, *The Making of an American*. She died in 1905 and Jacob donated three stained glass windows in her memory to the Church of the Resurrection in Richmond Hill (NR-listed). Jacob lived near the cemetery on 120th Street and walked up to the cemetery and planted two beech tree saplings from his yard at Elisabeth's gravesite. The trees now tower over the tiny grave and make quite an impression.

On a hill in Maple, is the marker for Charles Manly (1876-1927), an aeronautics pioneer, flying a plane that he and Samuel Langely designed in early 1903. Manly designed a five-cylinder radial engine in December of 1901. He was chosen in 1903 to fly the Aerodrome plane in October. His first attempt failed and the plane crashed. Another attempt on December 8th, also ended in a crash. Of course, a few weeks later the Wright brothers were the first to keep a plane in the air. Manly went on to become an authority on automotive transportation, power generation, and transmission.

The South Border section, which runs along Kew Gardens Road has the fewest monuments. Here the poorest are interred, with a large number of African Americans, as Maple Grove was one of the first cemeteries in the area to allow burial of African Americans. They were noted in the interments books with a notation next to their names, "colored." Many immigrants, infants, and stillborn babies are also buried in this section as well as many who died during the 1918 influenza epidemic. Most of the stones in this section are plainer and sparse, and some of the inscriptions have been washed away by time.

There are many interesting people buried in South Border and further research is being done. Millie Tunnel, reported to be 111 years old at her death, is buried here. She is reported to have served George Washington as a slave at her owner's plantation. She took her owner's last name (Tunnel, George) and when he died he freed her and she moved to Jamaica with her family. She died there in 1896.

Another African American of important note is Samuel Cisco (died 1897). Colored schools were established under private auspices in Jamaica as early as the 1820's. It was not until 1886 that the town appropriated \$4,000 to build a school for colored people. Public School #2 opened that year with an attendance of 70. In 1890 Mary Ann Shaw, 20 years old, became the first black principal in Queens, for PS #2. In 1892 a group of black parents filed a suite with the New York Supreme Court to argue admission for their children to white schools on the ground that colored schools were inferior. Samuel Cisco was part of this group, as well as Joseph Teagle, also buried at Maple Grove. The justice ruled that it was not unlawful to provide separate schools for colored children, but that the children were entitled to equal educational facilities. Cisco was in and out of jail from March of 1896 until before his death in 1897, fighting for this cause. After his death, his wife continued the

**United States Department of the Interior
National Park Service**

**National Register of Historic Places
Continuation Sheet**

Section 8 Page 10

Maple Grove Cemetery
Name of Property
Queens County, New York
County and State

battle, only to lose in the highest court in February of 1900. However, when elected to the State Legislature, her attorney, George Wallace, authored a bill that removed all distinction of color to New York admissions. Gov. Theodore Roosevelt signed that bill in April 1900. George Wallace is also buried South Border.

Delia Loughlin, "The Bluebird of Mulberry Bend," 23 years old, is buried in South Border. She died on November 14, 1892. Her life went astray and she lived a destitute life in the slums off the Bowery. She was a prostitute, drank liquor, and took drugs, and was in and out of prison. She was rescued from the streets by the Door of Hope Mission and became an inspiration to others like her in Mulberry Bend.

There is a monument at Maple Grove called the Florence Crittenton Mission, named after Mr. Crittenton's 5-year-old daughter who passed away. This mission took in young girls who were either pregnant or runaways.

Others of interest are Giuseppe Izzo, an Italian who was killed by electric shock as noted on his tombstone. He was electrocuted by the third rail of the Long Island Railroad in 1915 when he was working for them. Only 20 years old, he was to return to Italy the following day to join the army.

There are two separate graves of dogs in the cemetery, with headstones. One is "Julia," a Dalmatian that saved five people from a fire. The inscription on her stone reads, "My only true friend." The other dog is "Daisy" who saved her master from a fire. Dogs were not allowed to be buried in human cemeteries, but these two are documented in the interment books, as well as articles in the newspapers, with burial sites being "undisclosed."

Alfred H. Grebe (1895-1935), the radio pioneer and broadcaster, died at age 40 and is buried in Prospect along with his family. He designed the "Synchophase" radio in the 1920's and broadcast radio programs from his factory in Richmond Hill.

Also buried in the Prospect section is Ann Wilkins (1806-1857), an extraordinary woman. She became a mission to Africa in 1837, when it was unheard of for women to travel to this continent. She crossed the Atlantic six times and served in Liberia as a Christian teacher, and returned in ill health and died. She was buried on her family's farm in New Jersey and when that was sold, her body was moved to Maple Grove by The Women's Foreign Methodist Missionary. The group built a beautiful polished black granite monument and her original marker lies on the ground below it.

In 1879 Count Johannes, a flamboyant Shakespearean actor, was buried in the Maple section. There was a bounty put on his head and brains for \$500 after he was buried. Numerous newspaper articles of the time make note of the special "watch" put on his grave to keep grave robbers away.

There are many veterans buried at the cemetery including those from the Civil War and the Spanish American War. Dr. Zacariah Dennler (1840-1890), was a Civil War surgeon, working under the 10th New York Heavy Artillery and the 7th Infantry Regiment (African American troops). He had tickets to be at the Ford Theater the night Lincoln was assassinated, but had to work at the hospital instead, and when Lincoln was brought in, it was his probe that removed the bullet. The other Civil War veteran of interest is Henry R. Heath (died 1908), one of

**United States Department of the Interior
National Park Service**

**National Register of Historic Places
Continuation Sheet**

Section 8 Page 11

Maple Grove Cemetery
Name of Property
Queens County, New York
County and State

the first trustees of Maple Grove, who was reported to be the first prisoner to shake hands with Lincoln when the first exchange of prisoners was made.

Other noted persons are buried in Maple Grove Cemetery include P.H. Cannon, also known as Henry Hatton (1837-1922), author of Magic Books and a founder of The Magician's Society; Sam Loyd (1841-1911), inventor of puzzles such as 14-15 and the Trick Donkey; Tony Sbarbaro (1897-1969), drummer of The Original Dixieland Jazz Band, recording the first jazz record in 1917; Jimmy Rushing (1903-1972), first vocalist with Count Basie; and Don Marquis (1878-1937), author and a member of the round table at the Algonquin Hotel (1878-1937).

Special mention is made of the undertakers that served Maple Grove. One of the cemetery's undertakers, William H. Simonson (1860-1923) is buried there, with the Simonson family still practicing the business into the fourth generation. Most of the funeral arrangements for Richmond Hill residents have been handled by the Simonsons. Joseph Everitt (1822-184) handled most of the residents of Jamaica and his son, William, continued the business after his passing. Joseph Everitt is buried in the Maple section. Stephen Merritt of New York City, although not buried at Maple Grove, was an undertaker, a reverend, a politician, and a very wealthy man. He buried President Ulysses Grant as well as the poor immigrants from tenement neighborhoods. He became very religious in his later years because of an encounter with an African boy named Kaboo (later Samuel Morris), who changed his life forever. Samuel Morris taught him about life, charity and Godliness. Merritt searched the Missions and the hospitals to help the sick and later, bury these poor people. There are over three hundred adults and many children on an unmarked hilltop mound in the Summit section. The earliest plots owned by Merritt were in the South Border. Merritt was also the first man to train a woman, Lina D. Oduo, in embalming in 1899.

Conclusion

Maple Grove Cemetery is a remarkable record of the evolution of cemetery design in America. Its early section, Monumental Park, is a distinguished, intact example of rural cemetery design of the nineteenth century while the more recent section embodies the characteristics of twentieth century memorial park design. The cemetery continues to convey its sense of time and place and retains a high level of integrity of setting, design, materials, workmanship, feeling, and association.

United States Department of the Interior
National Park Service

National Register of Historic Places
Continuation Sheet

Section 9 Page 1

Maple Grove Cemetery
Name of Property
Queens County, New York
County and State

Bibliography

Ammarell, Natalie Ph.D. The History of Maple Grove Cemetery's South Border, 2002.

Ballenas, Carl. "The History of Maple Grove Cemetery," 1975.

Ballenas, Carl and Nancy Cataldi. *Images of America: Richmond Hill*. Arcadia Publishing, 2002.

Berg, Shary Page. Maple Grove Cultural Landscape Assessment. Cambridge, MA, 2001.

The Brooklyn Eagle. 1875-1902.

Buffalo Evening News. Obituary for George W. McClure, October 9, 1939 and George E. McClure, March 11, 1971.

Demay, Joseph, Jr. Website at OldKewGardens.com. 2002.

Expanded Carnegie Hill Historic District Designation Report. New York: New York City Landmarks Preservation Commission, December 21, 1993.

Jackson, Kenneth T. (ed.) *The Encyclopedia of New York City*. New Haven: Yale University Press, 1995.

Master Plan: Maple Grove. Grove-Blair Hines and Associates, March 2002.

The New York Herald Newspaper. 1875-1906.

Palmer, Noyes. Superintendent Records Maple Grove Cemetery, 1875-1905.

The Richmond Hill Record. 1873-1925.

Sloane, David Charles. *The Last Great Necessity: Cemeteries in American History*. Baltimore: The Johns Hopkins University Press, 1991.

The Sun Newspaper. 1875-1899.

The World Newspaper. 1875-1906.

Maple Grove Cemetery
Name of Property

Queens County, New York
County and State

10. Geographical Data

Acreage of Property approx. 65 acres

UTM References (See Continuation Sheet)

(Place additional UTM references on a continuation sheet.)

1 18 | |
Zone Easting Northing

3 18 | |
Zone Easting Northing

2 18 | |

4 18 | |

Verbal Boundary Description

(Describe the boundaries of the property on a continuation sheet.)

Boundary Justification

(Explain why the boundaries were selected on a continuation sheet.)

11. Form Prepared By (*See Continuation Sheet for author)

name/title Contact: Kathy Howe, Historic Preservation Specialist

organization NYS Office of Park, Recreation and Historic Preservation date 01-12-04
Field Services Bureau

street & number P.O. Box 189, Field Services Bureau telephone 518-237-8643, ext. 3266

city or town Waterford state NY zip code 12188

Additional Documentation

Submit the following items with the completed form:

Continuation Sheets

Maps

A **USGS map** (7.5 or 15 minute series) indicating the property's location

A **Sketch map** for historic districts and properties having large acreage or numerous resources.

Photographs

Representative **black and white photographs** of the property.

Additional items

(Check with SHPO or FPO for any additional items)

Property Owner (Complete this item at the request of the SHPO or FPO)

name Maple Grove Cemetery Attn: Linda Mayo-Perez, President/CEO

street & number 83-15 Kew Gardens Road, P.O. Box 150086 telephone 718-544-3600

city or town Kew Gardens state NY zip code 11415-0086

Paperwork Reduction Act Statement: This information is being collected for applications to the National Register of Historic Places to nominate properties for listing or determine eligibility for listing, to list properties, and to amend existing listings. Response to this request is required to obtain a benefit in accordance with the National Historic Preservation Act, as amended (16 U.S.C. 470 *et seq.*)

Estimated Burden Statement: public reporting burden for this form is estimated to average 18.1 hours per response including time for reviewing instructions, gathering and maintaining data, and completing and reviewing the form. Direct comments regarding this burden estimate or any aspect of this form to the Chief, Administrative Services Division, National Park Service, P.O. Box 37127, Washington, D.C. 20503

United States Department of the Interior
National Park Service

National Register of Historic Places
Continuation Sheet

Section 10 Page 1

Maple Grove Cemetery
Name of Property
Queens County, New York
County and State

10. Geographical Data

UTM References

	<u>Zone</u>	<u>Easting</u>	<u>Northing</u>
1)	18	599528	4506995
2)	18	599701	4506854
3)	18	599454	4506493
4)	18	599069	4506790
5)	18	598987	4507069
6)	18	599190	4507174

Verbal Boundary Description

The boundary of Maple Grove Cemetery is shown as the solid line on the accompanying tax map.

Boundary Justification

The nominated property consists of the entire parcel (approx. 65 acres) that historically and presently makes up Maple Grove Cemetery. This includes Monumental Park, in the northern part of the cemetery, and Memorial Park, in the southern portion. The boundary coincides with the current legal lot for the property.

**United States Department of the Interior
National Park Service**

**National Register of Historic Places
Continuation Sheet**

Section 11 Page 1

Maple Grove Cemetery
Name of Property
Queens County, New York
County and State

Research and form prepared by
Nancy Cataldi
Richmond Hill Historical Society
86-22 109th Street
Richmond Hill, New York 11418
718-847-6070

**United States Department of the Interior
National Park Service**

**National Register of Historic Places
Continuation Sheet**

Section 11 Page 2

Maple Grove Cemetery
Name of Property
Queens County, New York
County and State

List of Photos

Maple Grove Cemetery

Queens County, NY

Photographer: Nancy Cataldi

Date: November 2003

Negatives: Nancy Cataldi, 86-22 109th Street, Richmond Hill, NY 11418

1. Administration Building from across Kew Gardens Road, looking northeast.
2. Front addition of Administration Building, looking northeast.
3. Administration Building from inside the cemetery, looking northwest.
4. Administration Building with 1831 blacksmith shop at right, looking northwest.
5. Blacksmith shop attached at rear of Administration Building, looking west.
6. Maple Plot, grave and surroundings of Henry Heath, Civil War veteran.
7. Road between Maple and Summit sections, looking northeast.
8. Maple Plot, Snedeker obelisk and surroundings, looking northeast.
9. Maple Plot, Humorist Don Marquis' grave and surroundings, looking east.
10. Maple Plot, Lott Family section, looking southwest.
11. Maple Plot, headstone of John Sutphin, Queens forefather, looking east.
12. Maple Plot, Radke-Bender headstone, looking north.
13. Maple Plot, 1892 iron gate, looking west.
14. Maple Plot, Seib Angel and weeping hydrangea tree, looking south.
15. Road between Maple and Prospect Plots (Maple on right), looking north.
16. Prospect Plot, headstone of architect James E. Ware, looking north.
17. Prospect Plot, Pyramid Lodge monument, looking east, Maple Plot behind.
18. Prospect Plot, Briggs Angel, looking north.
19. Prospect Plot, Willumsun tree trunk marker, looking west.
20. Prospect Plot, Grebe Family plot, radio pioneer, looking north.
21. Prospect Plot, Rohe headstone, looking north.
22. Prospect Plot, Somers gravestones, looking south.
23. Prospect Plot, close-up of Angel, looking north.
24. Prospect Plot, monument to Ann Wilkins, Missionary to Liberia, looking north.
25. Summit Plot, crowned cross gravestone of John E. Bond, looking southeast.
26. Summit Plot, obelisk, looking southeast.
27. Summit Plot, gravestone of Albon Platt Man II, co-founded of Kew Gardens.
28. Summit Plot, grave of Elisabeth Riis, wife of Jacob Riis. Note the two beech trees planted by Jacob Riis.
29. Summit Plot, gravestone with child, Ordenstein grave, looking southeast.
30. South Border, gravemarkers along Kew Gardens Road, looking east.
31. South Border, middle of section, along Kew Gardens Road, Summit Plot to left.
32. South Border, looking southwest toward Kew Gardens Road.
33. South Border, flush to ground stone of "Little Jack," a small child, looking south.

United States Department of the Interior
National Park Service

National Register of Historic Places
Continuation Sheet

Section 11 Page 3

Maple Grove Cemetery
Name of Property
Queens County, New York
County and State

34. South Border, view of large oak tree, looking east.
35. South Border, lamb on top of stone of Peter Healy, looking south.
36. South Border, flush to ground stone of "Julia, the Dog," looking west.
37. South Border, gravestone of Giuseppe Izzo, looking west.
38. Central Plot, Wagner Urn, looking north.
39. Central Plot, looking north.
40. Linden Plot, Receiving Tomb designed by James E. Ware, looking northeast.
41. Linden Plot, road between Linden and Summit, looking south.
42. Linden Plot, looking northwest.
43. Border Plot, overall view looking east.
44. Border Plot, overall view, looking northeast.
45. Memorial Park, Peter Pan Garden, looking southwest.
46. Memorial Park, 9/11 Flagpole, Presidential Circle, looking northwest.
47. Memorial Park, 9/11 Memorial Stone, Presidential Circle
48. Memorial Park, 9/11 Star Memorial, Presidential Circle
49. Memorial Park, Section B, looking east.
50. Memorial Park, Section C, lake, looking southwest.
51. Memorial Park, Section G, looking southeast.
52. Memorial Park, Section E, looking south.
53. Section I, Peristyle, looking east.
54. Section K, Florentine Well Head, looking north.
55. Memorial Park, Liberty Garden.
56. Memorial Park, Bell Garden.

Additional Documentation (on file at cemetery office)

- Sanborn Map, March 2003.
- Site Plan of Maple Grove Cemetery showing plots, 2003.
- Ca. 1869-1873 Belcher-Hyde (?) map of Maple Grove Cemetery.
- 1908 map of Maple Grove Cemetery and vicinity, from 1908 brochure book
- Maple Grove Cemetery, 1908 brochure, 10 pages.
- Plan of Administration Building, Certificate of Occupancy Survey for New Additions, Borough of Queens, ca. 1962.
- Plot Plans of Sections B - L, Maple Grove Memorial Park, by G.W. McClure & Son, Landscape Architects, Buffalo, NY, various dates between 1942 and 1947.
- Brochure for Maple Grove Cemetery, n.d. (ca. 1960s?).
- Obituary for Millie Tunnel, 111-year old ex-slave, January 1896 (source?).
- Woman tending grave in Maple Grove, ca. 1912.
- Long Island Railroad Main Line, Maple Grove, 1903.
- Letter from Stephen Merritt, Undertaker, re/burial of Helen Mae Flanagan and Chas. A. Flanagan, n.d.
- Architect James E. Ware's letter to the cemetery association regarding payment, November 30, 1875.

**United States Department of the Interior
National Park Service**

**National Register of Historic Places
Continuation Sheet**

Section 11 Page 4

Maple Grove Cemetery

Name of Property

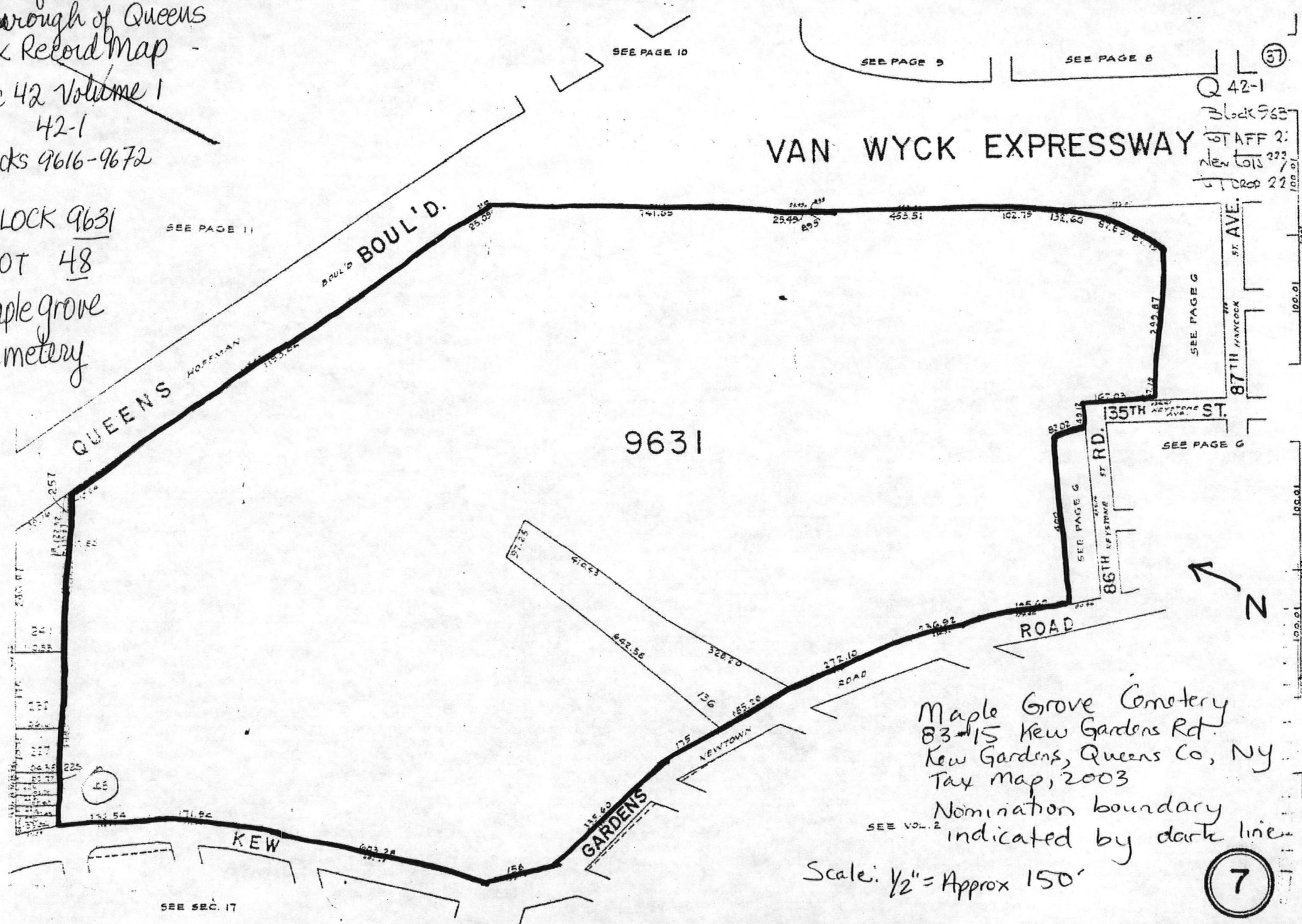
Queens County, New York

County and State

- George Jones (Count Joannes), portrait, ca. 1879.
- Photo of Peter Conklin.
- Picture of Delia Laughlin.
- Photograph of Elisabeth Riis with husband Jacob, ca. 1876.
- Photos/pictures of John Sutphin, William Cogswell, Sam Loyd, Don Marquis.
- Portrait of Ann Wilkins, Missionary to Liberia.

Dept. of Taxation + Finance
Borough of Queens
Tax Record Map
Sec 42 Volume 1
42-1
Blocks 9616-9672

BLOCK 9631
LOT 48
Maple Grove
Cemetery



SEE PAGE 9 SEE PAGE 8 (57)
Q 42-1
Block 9631
STAFF 2:
New Lots 223
Cross 22

SEE PAGE 11

SEE PAGE G

SEE PAGE G

SEE SEC. 17

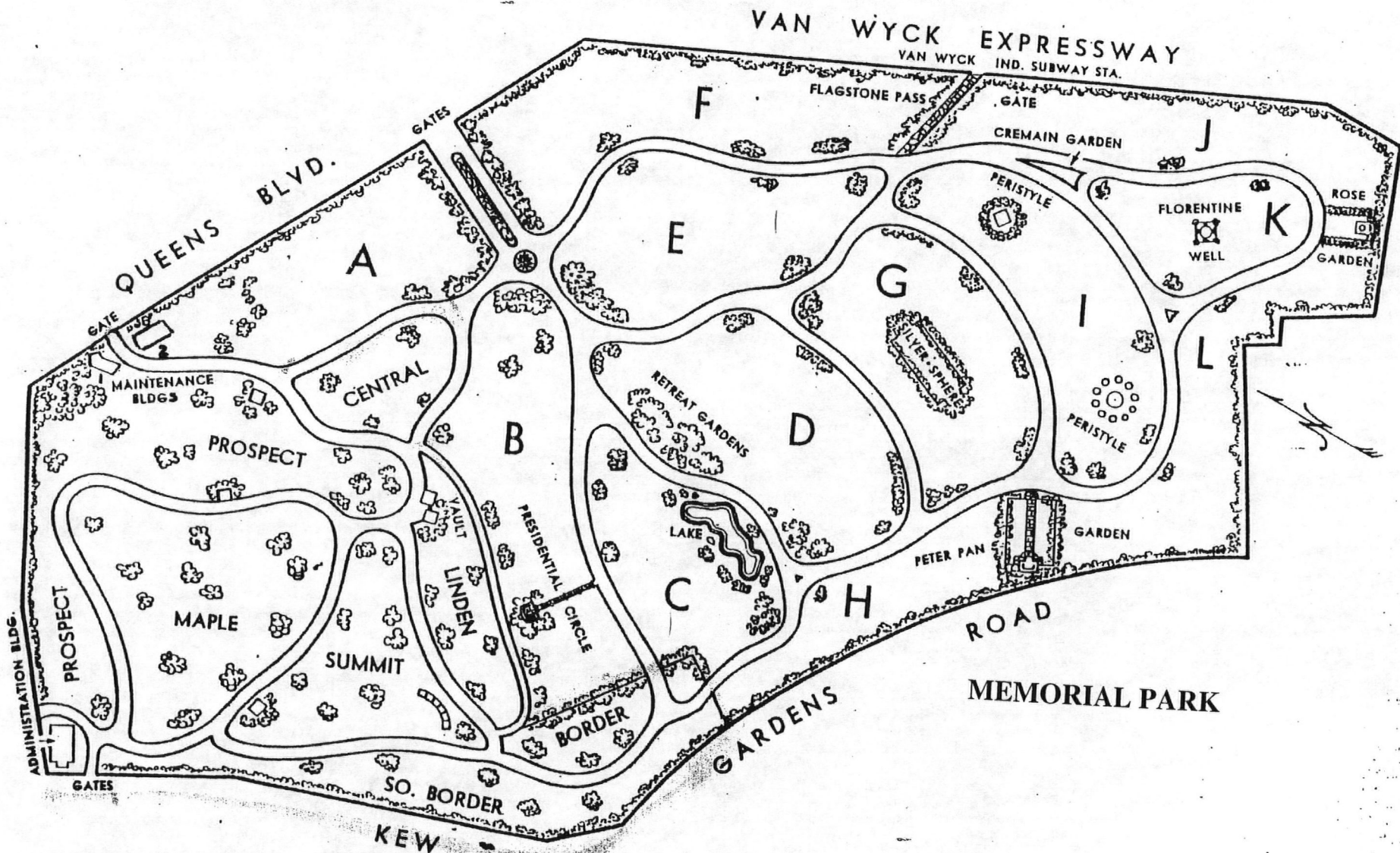
Maple Grove Cemetery
83-15 Kew Gardens Rd.
Kew Gardens, Queens Co, NY
Tax Map, 2003
Nomination boundary
indicated by dark line

Scale: 1/2" = Approx 150'

(7)

MAPLE GROVE CEMETERY

2003



MONUMENTAL PARK

1908 Photographie Copy Maple Grove Booklet

QUEENSBORO BRIDGE CARS FROM FOOT OF EAST 59TH STREET
DIRECT TO CEMETERY ENTRANCE (FARE 5 CENTS).

From New York

TO REACH THE CEMETERY from Manhattan, take train at Pennsylvania Station (7th Ave. and 33d St.) for Kew. There are now forty-eight trains stopping daily at Kew (coming from both directions) and the running time from New York is only SIXTEEN MINUTES.

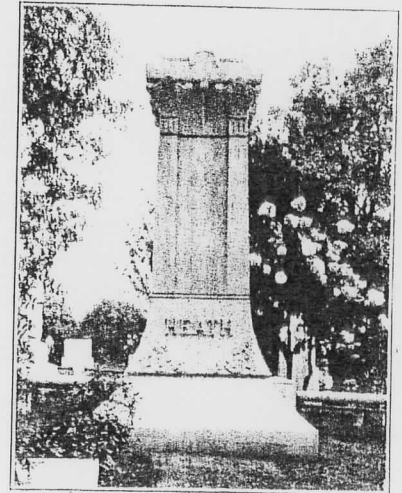
Excursion ticket forty-eight cents. See page twenty-five of this book for other rates. Casket can be placed in rear vestibule of any train.

A hearse will be in waiting at Kew Station, when notice is given that it will be required, no charge being made for use of same. It will be seen that the expense of reaching the cemetery by train is very slight.

Carriage funerals take East 34th Street Ferry, or Queensboro Bridge, to Long Island City, or 92d Street Ferry to Astoria. The carriage route from Long Island City is by Thomson Avenue and Hoffman Boulevard, an excellent macadamized road extending the entire distance.

Carriage route from Astoria is by Grand Street, leading into Thomson Avenue.

Funerals crossing Houston Street Ferry, or Williamsburg Bridge, will reach the Cemetery by Metropolitan Avenue. See guide-map at end of book.



Six

Heath-Maple

THE TROLLEYS MENTIONED BELOW NOW CONNECT WITH QUEENSBORO BRIDGE CARS FROM JAMAICA. STOPPING AT CEMETERY ENTRANCE ON QUEENS BOULEVARD. CONNECTION IS MADE AT THE JUNCTION OF JAMAICA AVENUE AND QUEENS BOULEVARD.

From Brooklyn

HERE ARE AT PRESENT three ways of reaching the Cemetery from Brooklyn, aside from driving.

First: By the Atlantic Avenue division of the Long Island Railroad (or subway) to Jamaica changing there to train on the main line, stopping at Kew Station, located at the western entrance of the Cemetery. Distance from Jamaica to Kew, one mile and a half (fare five cents). Forty-eight trains daily (going and coming). Will meet train with hearse when notified (no charge).

Second: By Myrtle Avenue elevated train, changing at Wyckoff Avenue to Richmond Hill trolley. The terminus of the trolley line is at Lefferts Avenue, which leads directly to the Cemetery (a delightful twenty minutes' walk through the most attractive part of Richmond Hill).

Third: By Fulton Street, or Lexington Avenue, elevated train to Cypress Hills, changing there to Richmond Hill trolley, leaving car at Lefferts Avenue, and taking twenty minutes' walk as above.

The distance from the Borough Hall, Brooklyn, to the Cemetery is nine miles, and from the borough line three miles.



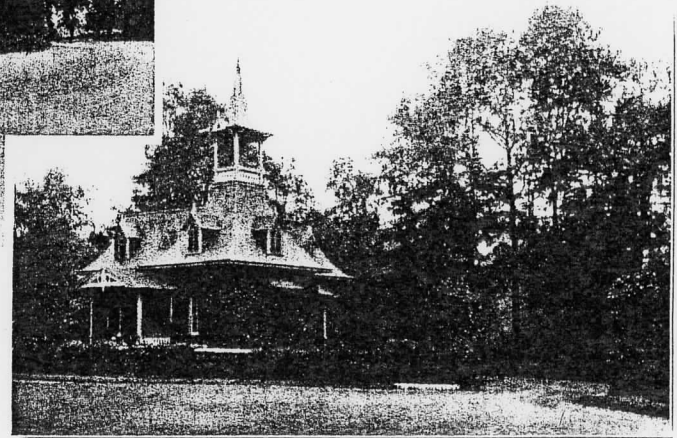
Eight



Twenty-four



OFFICE AND CHAPEL



LODGE





Twenty-three

CROSSING THE BAR

When I am dying, say,
And one clear day I lie,
As peacefully as in my infancy, of the bay,
When I put on the sea,
But such a calm as morning comes it deep,
I would for wind and foam,
When that which draws from out the boundless deep
Draws me out hence,
Lullam and lullam hush,
And after that the dark!
And may there be no sadness of farewell,
When I embark,
For tho' from out our bourne of Time and Place
The flood may bear me far,
I hope to see my Pilot face to face
When I have cross'd the bar.

ALFRED LORD TENNYSON



The entrance to Maple Grove from Queens Boulevard at Kew Gardens, Long Island

THE TIME comes in the life of every family when the need for a burial plot arises. But too frequently it happens that its final selection is left until the moment it is required, which invariably results in a hasty and often ill-considered purchase.

To obviate such an occurrence by the selection at this time of a suitable and convenient burial plot for the future needs of your family is in itself

important. But an even more imperative reason for such a purchase now is evinced by the fact that the number of remaining plots in the cemeteries within the Metropolitan area of New York is fast diminishing. When the present cemeteries are filled, no additional ones will be available.

Maple Grove Cemetery is fortunate in still having many beautiful plots available. Located in Kew Gardens, Long Island, it is conveniently



Maple Drive pictured above is one of the many attractive roads that wind in and about through Maple Grove

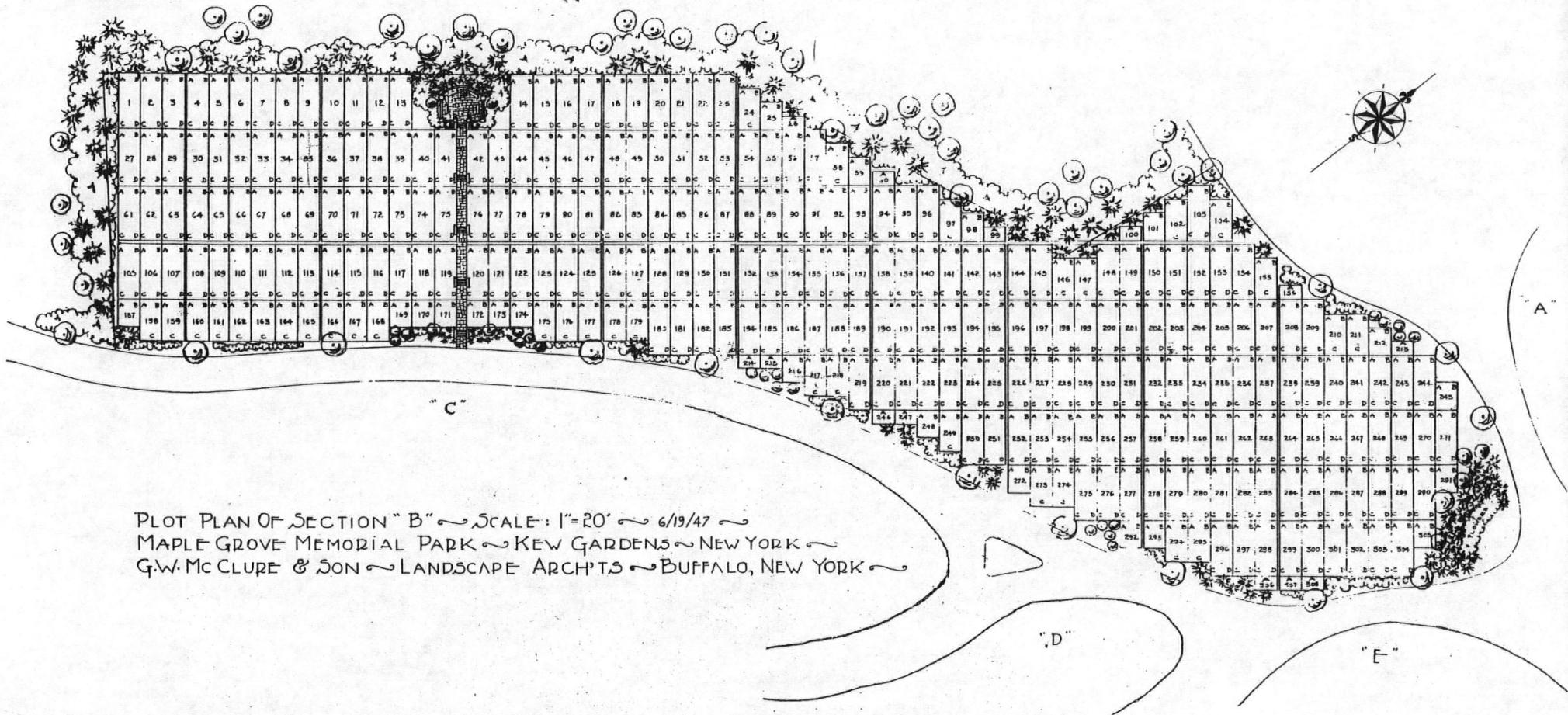


A typical scene on Summit Drive shaded with stately maples. Such roads make all sections of Maple Grove conveniently accessible

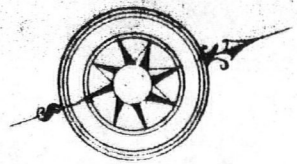
accessible from all sections, either by motor or train, being only twenty minutes from Pennsylvania Station, New York, via the Long Island Railroad.

Maple Grove was founded in 1875, and is one of the most attractive cemeteries in New York. Here stately old trees cast their shade over acres of beautiful landscaped ground. Paths wind in and out by well-kept plots, which all combine to

"B"

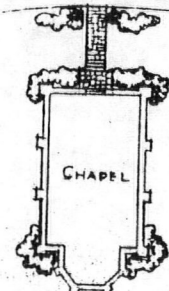
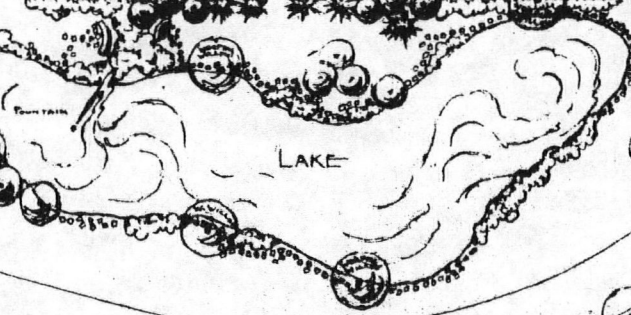
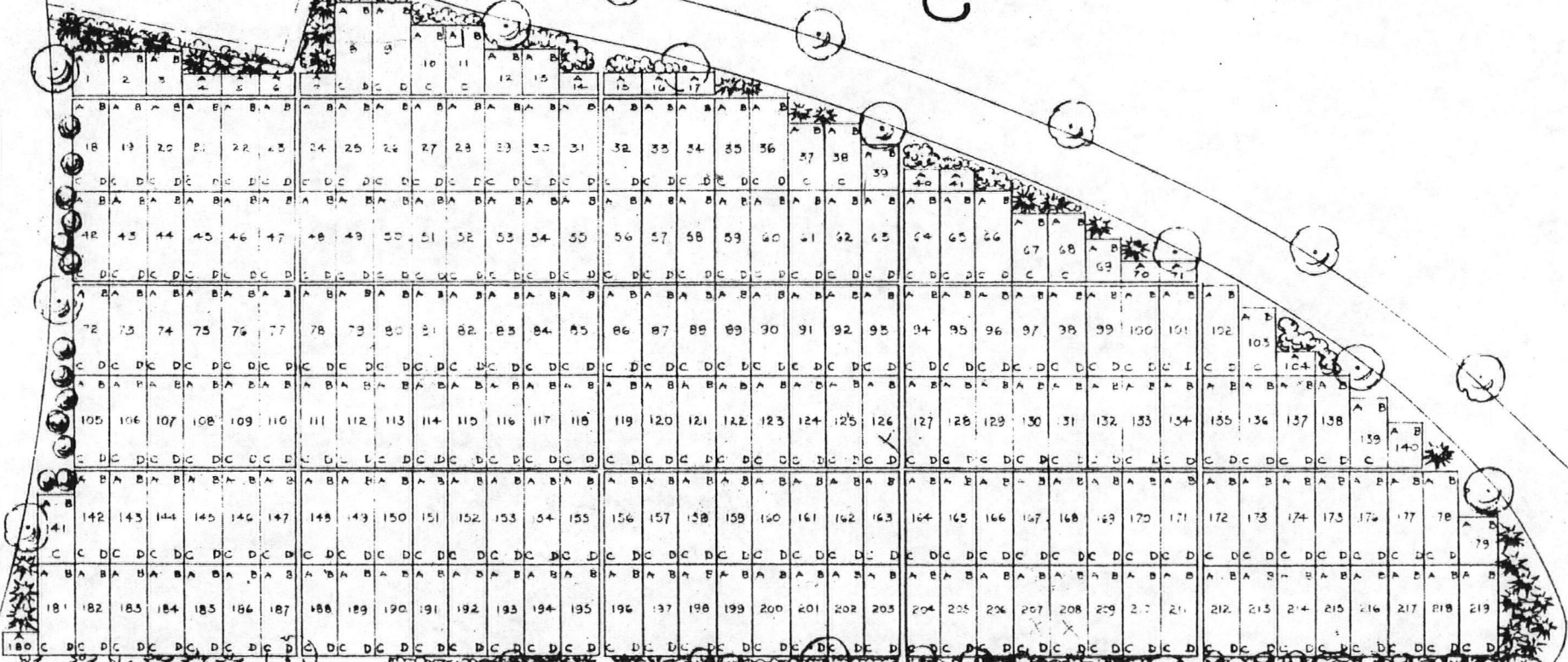


PLOT PLAN OF SECTION "B" ~ SCALE: 1"=20' ~ 6/19/47 ~
 MAPLE GROVE MEMORIAL PARK ~ KEW GARDENS ~ NEW YORK ~
 G.W. MCCLURE & SON ~ LANDSCAPE ARCH'TS ~ BUFFALO, NEW YORK ~



SECT "B"

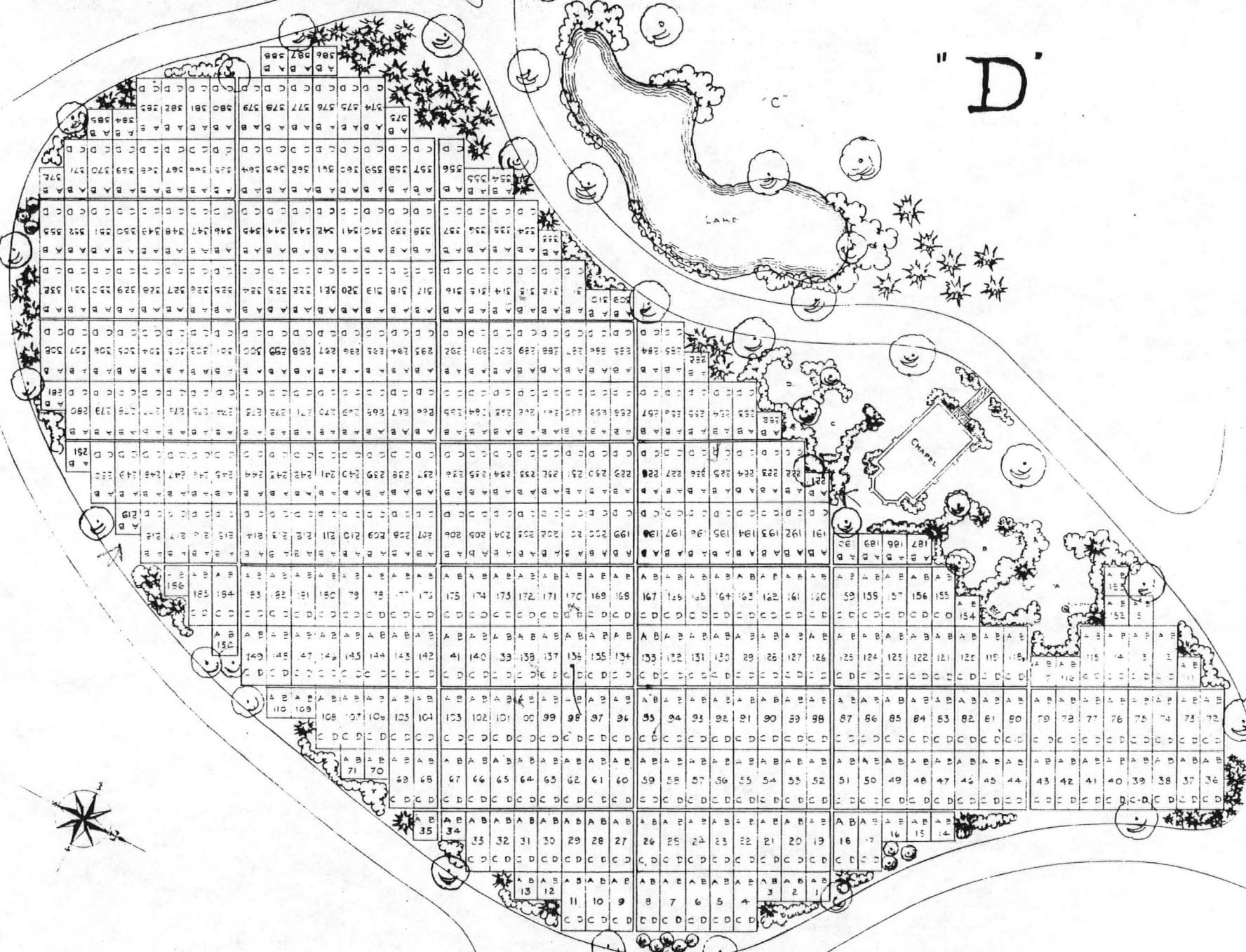
"C"



SECT "D"

1. PLOT PLAN OF SECTION "C" ~ SCALE 1"=20' ~ 10/23/46 ~
 2. MAPLE GROVE MEMORIAL PARK ~ KEW GARDENS, NEW YORK ~
 G.W. McCLURE LANDSCAPE ARCHITECTS ~ BUFFALO, NEW YORK ~

"D"

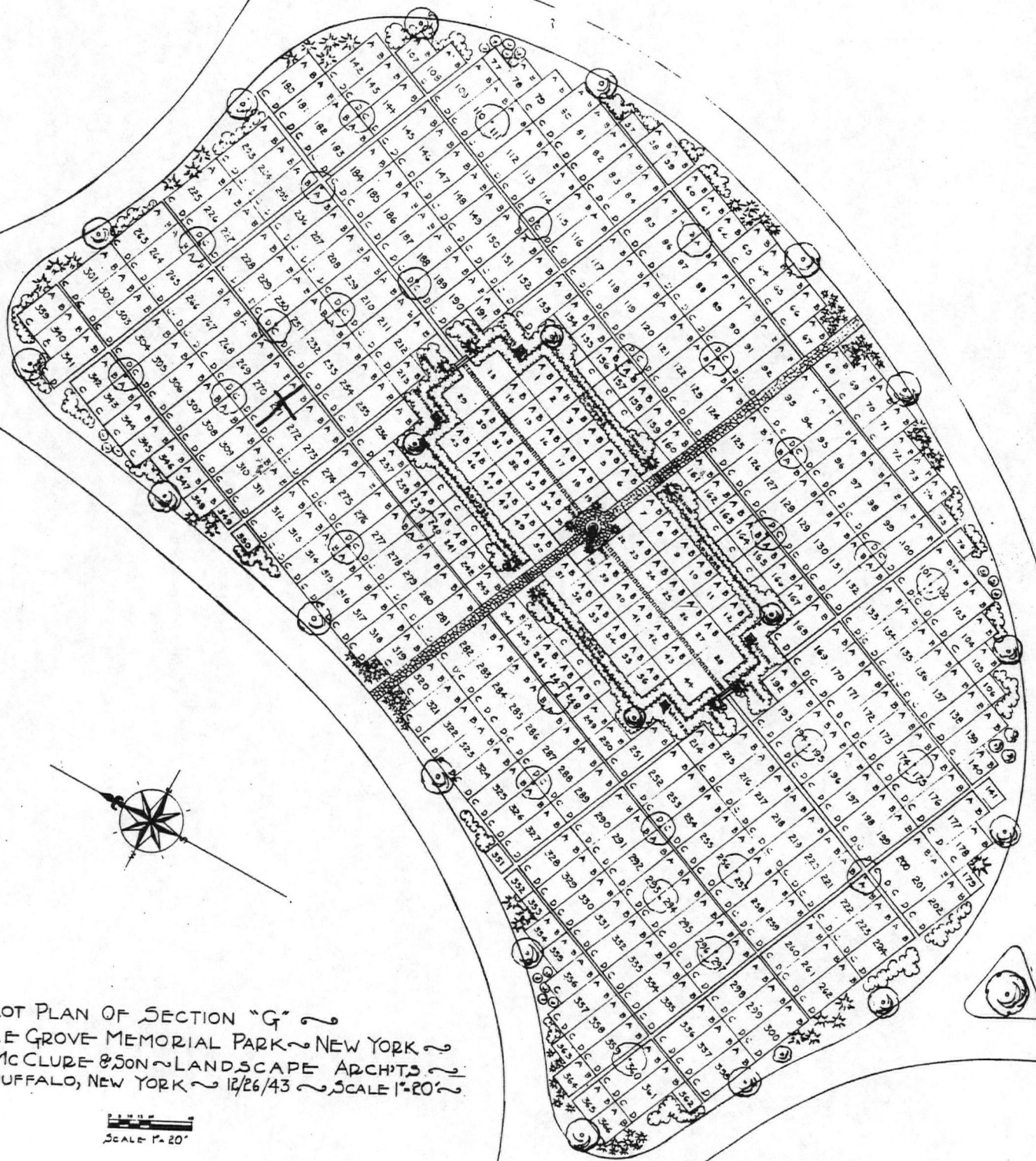


SCALE 1"=20'

~ LOT PLAN OF SECTION "D" ~
 MAPLE GROVE MEMORIAL PARK ~ N.Y.
 G.W. McCLELLAN & SONS LANDSCAPE ARCHITECTS
 ~ BUFFALO, NEW YORK ~ 8/14/43 ~

7.3

h't



~ LOT PLAN OF SECTION "G" ~
 MAPLE GROVE MEMORIAL PARK ~ NEW YORK ~
 G.W. McCLURE & SON ~ LANDSCAPE ARCHTS ~
 BUFFALO, NEW YORK ~ 12/26/43 ~ SCALE 1"=20' ~

SCALE 1"=20'

"G"

Avare E-164 D

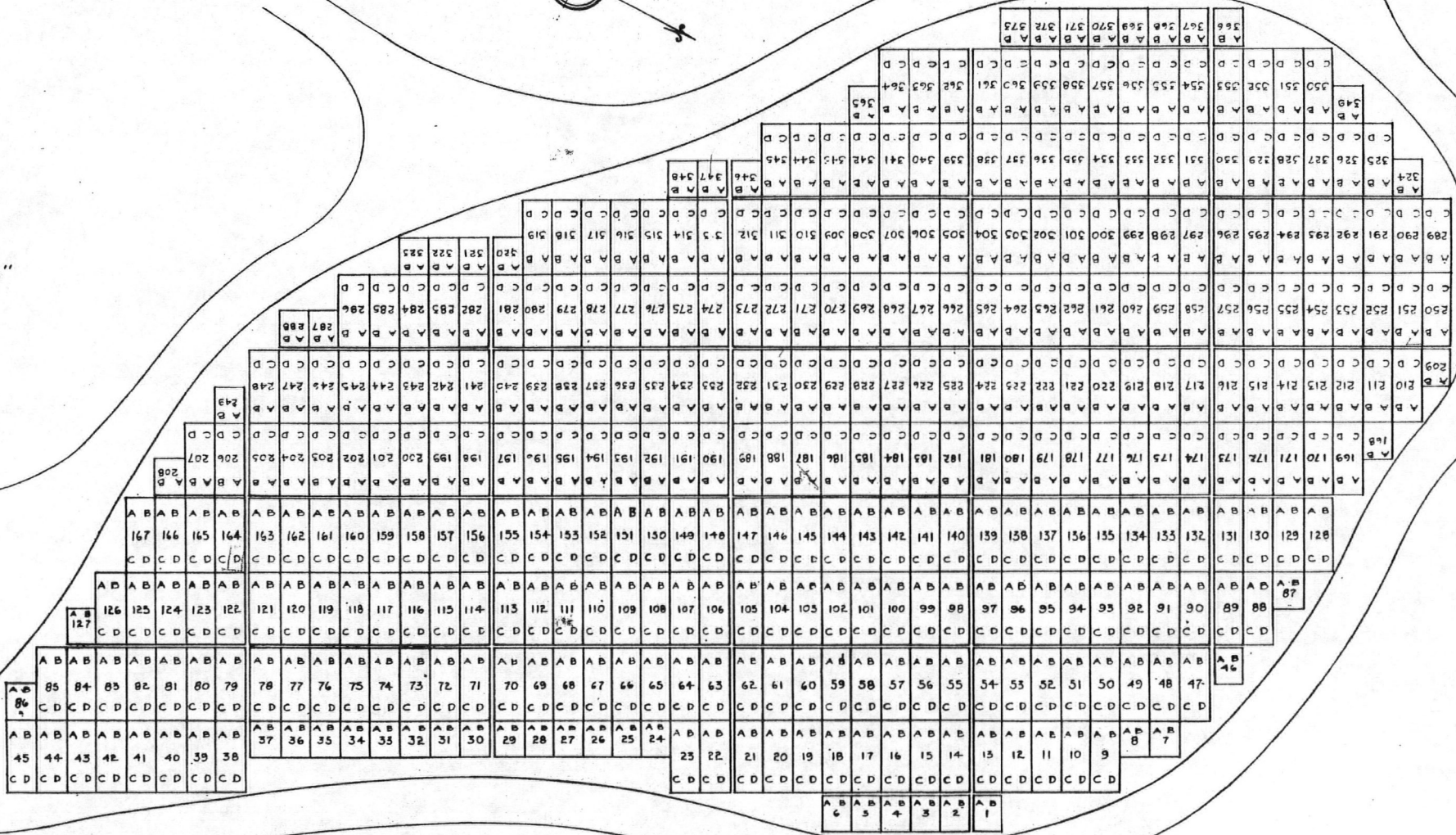
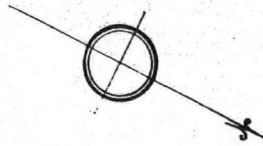
E 245 A

269 C

"E"

"D"

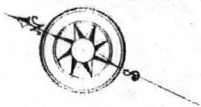
"G"



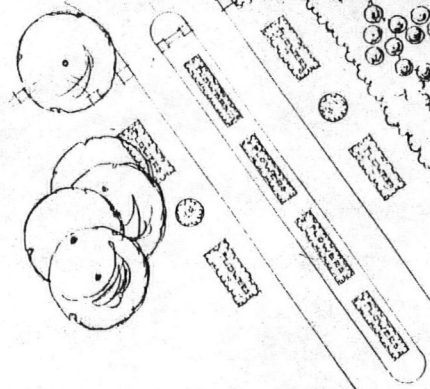
7.5

"F"

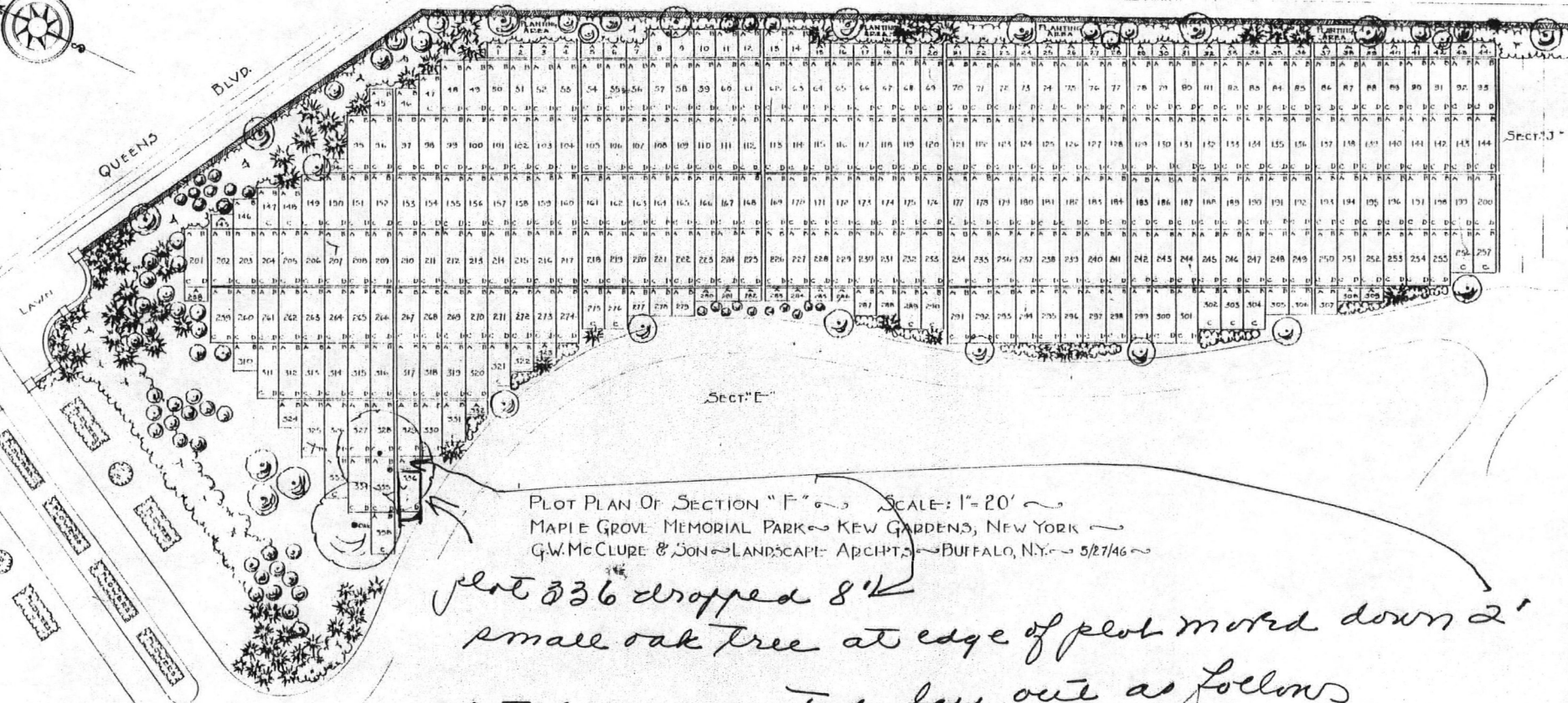
VAN WYCK BLVD.



QUEENS BLVD.



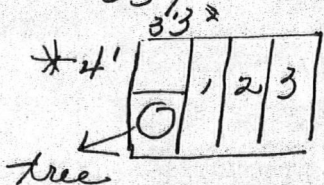
7.6



PLOT PLAN OF SECTION "F" SCALE: 1"=20'
 MAPLE GROVE MEMORIAL PARK - KEW GARDENS, NEW YORK
 G.W. McCURE & SON - LANDSCAPE ARCHTS. - BUFFALO, N.Y. - 5/27/46

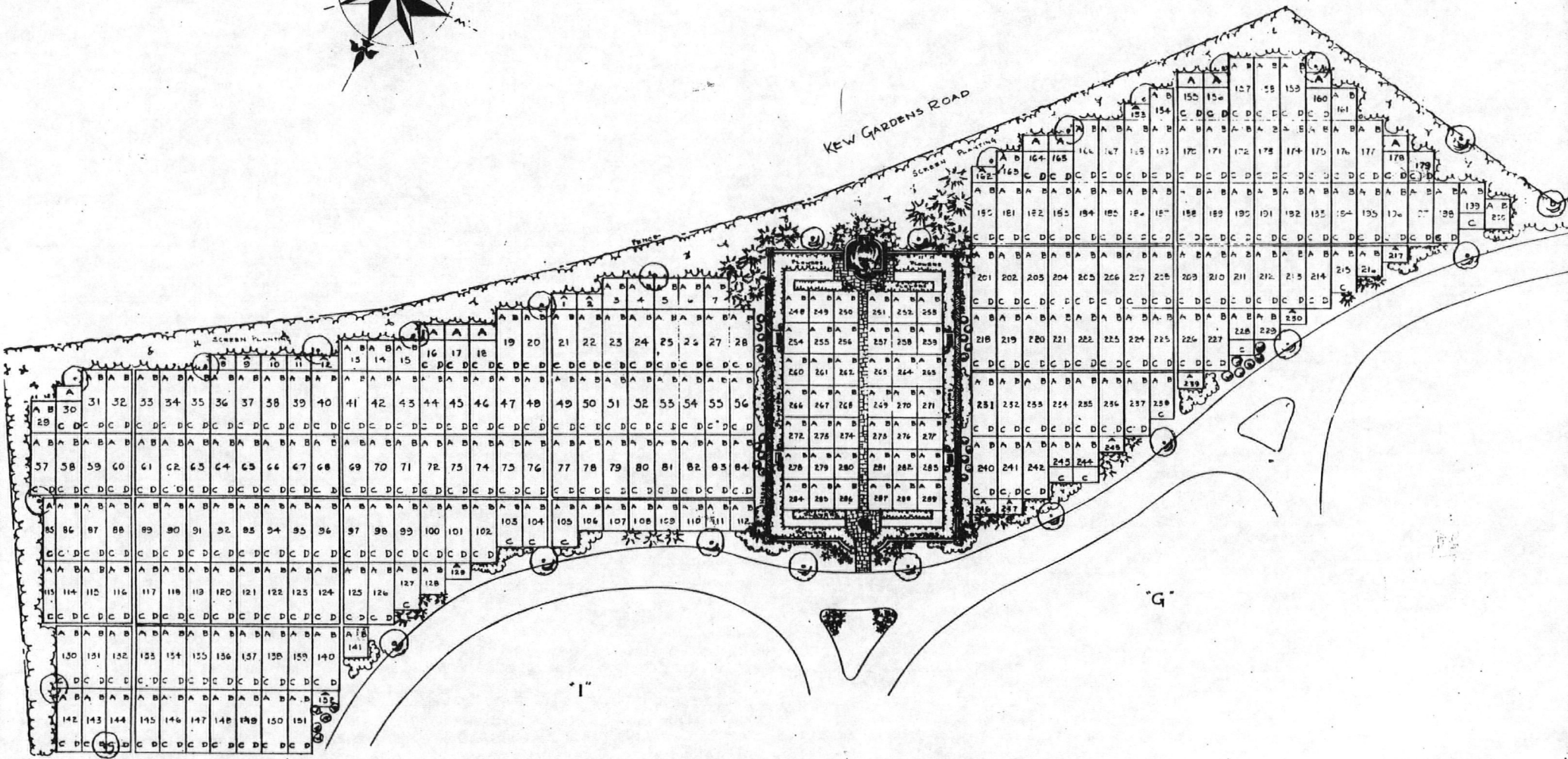
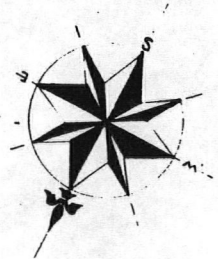
plot 336 dropped 8'
 small oak tree at edge of plot moved down 2'

plot 337 inserted lay out as follows



X can be sold for ashes 4' x 3'
 yr. 1-2-3 regular size grass
 3'3 ea x 8'

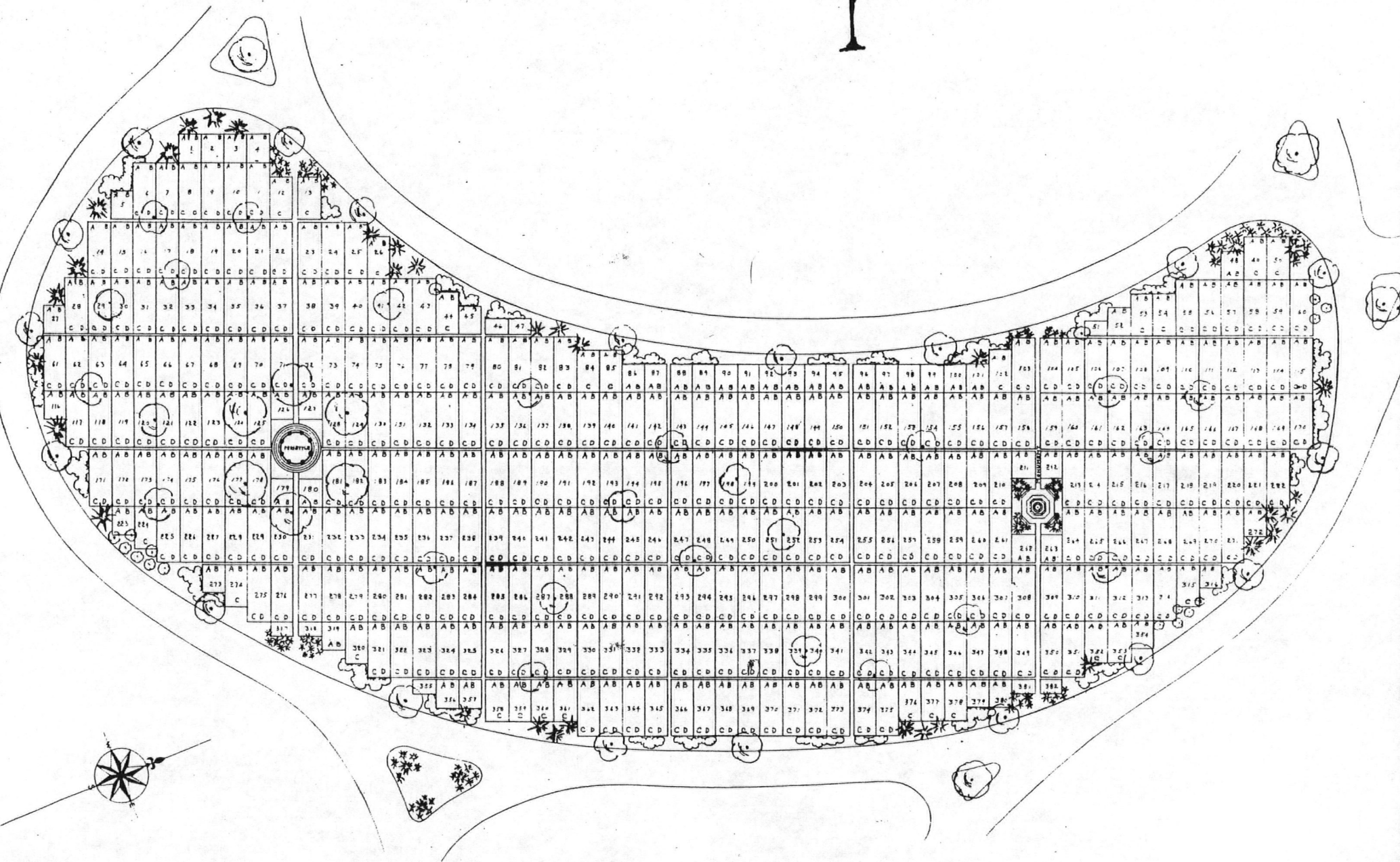
"H"



77 PLOT PLAN OF SECTION "H" ~ MAPLE GROVE MEMORIAL PARK ~ KEW GARDENS, NEW YORK
 G.W. McCLURE & SON ~ LAND ARCHITECTS ~ BUFFALO, NEW YORK.

9/15/44

"I"



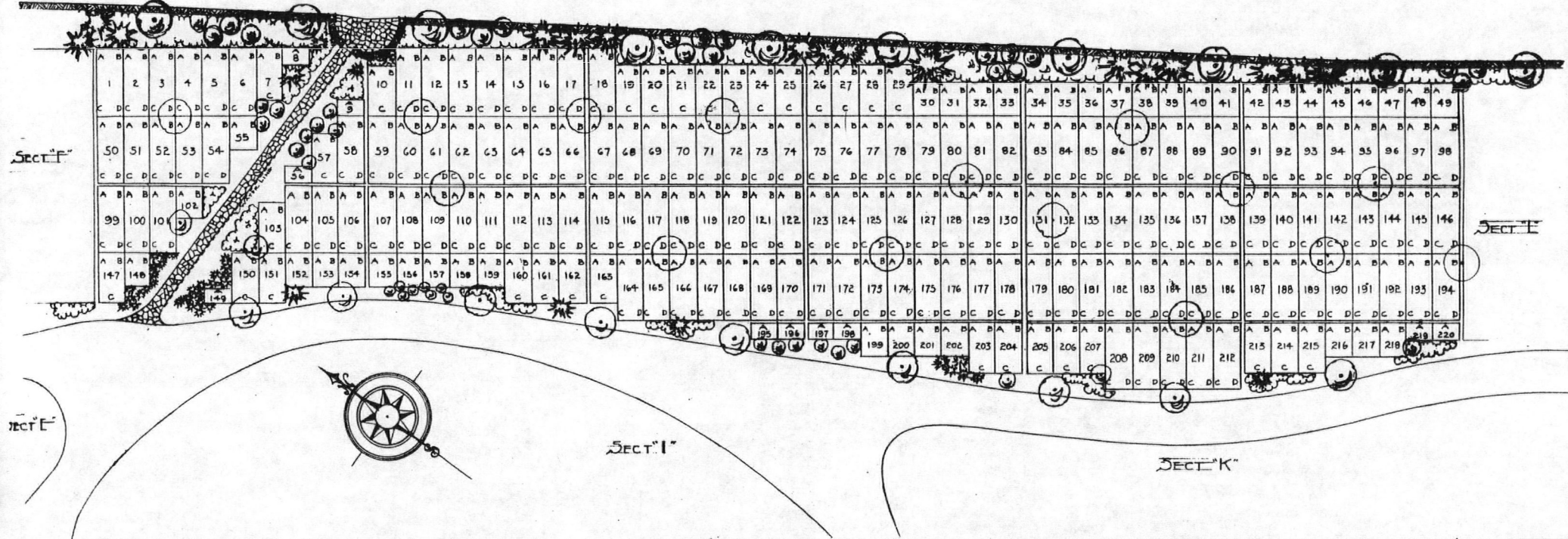
7.8

~ LOT PLAN OF ~ ON "I" ~ MAPLE GROVE MEMORIAL PARK ~
 ~ G.W. MCCLURE & SON ~ LANDSCAPE ARCHITECTS ~ BUFFALO, NEW YORK ~

~ 3/8/44

"J"

VAN WYCK BLVD.

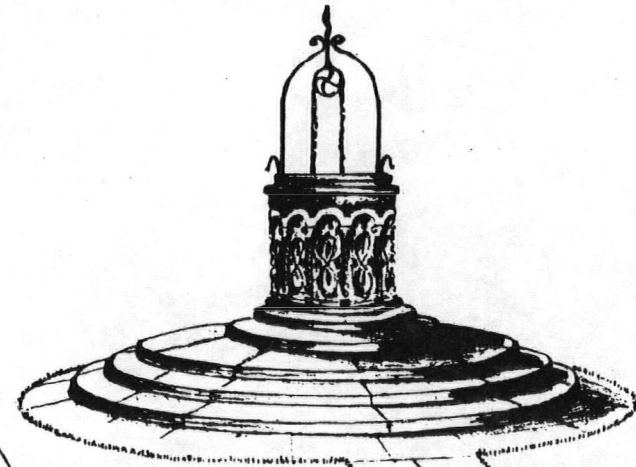


PLOT PLAN OF SECTION "J" ~ MAPLE GROVE MEMORIAL PARK ~ KEW GARDENS, NEW YORK ~ 10/3/45 ~
 G.W. McCLURE & SON ~ LANDSCAPE ARCHITECTS ~ BUFFALO, NEW YORK ~ SCALE 1"=20' ~

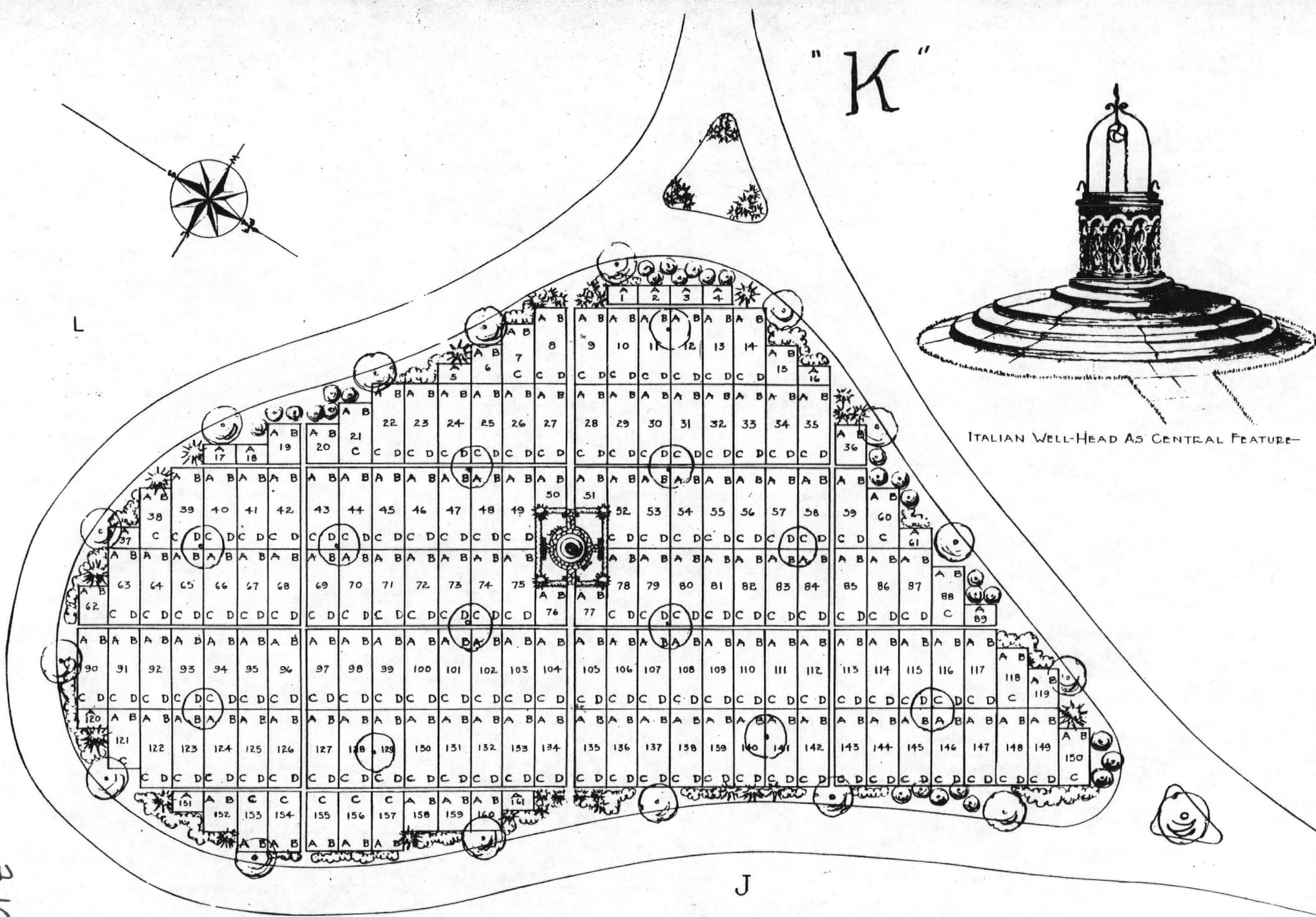
207 a
 212 D
 211 B

b.t

"K"



ITALIAN WELL-HEAD AS CENTRAL FEATURE-

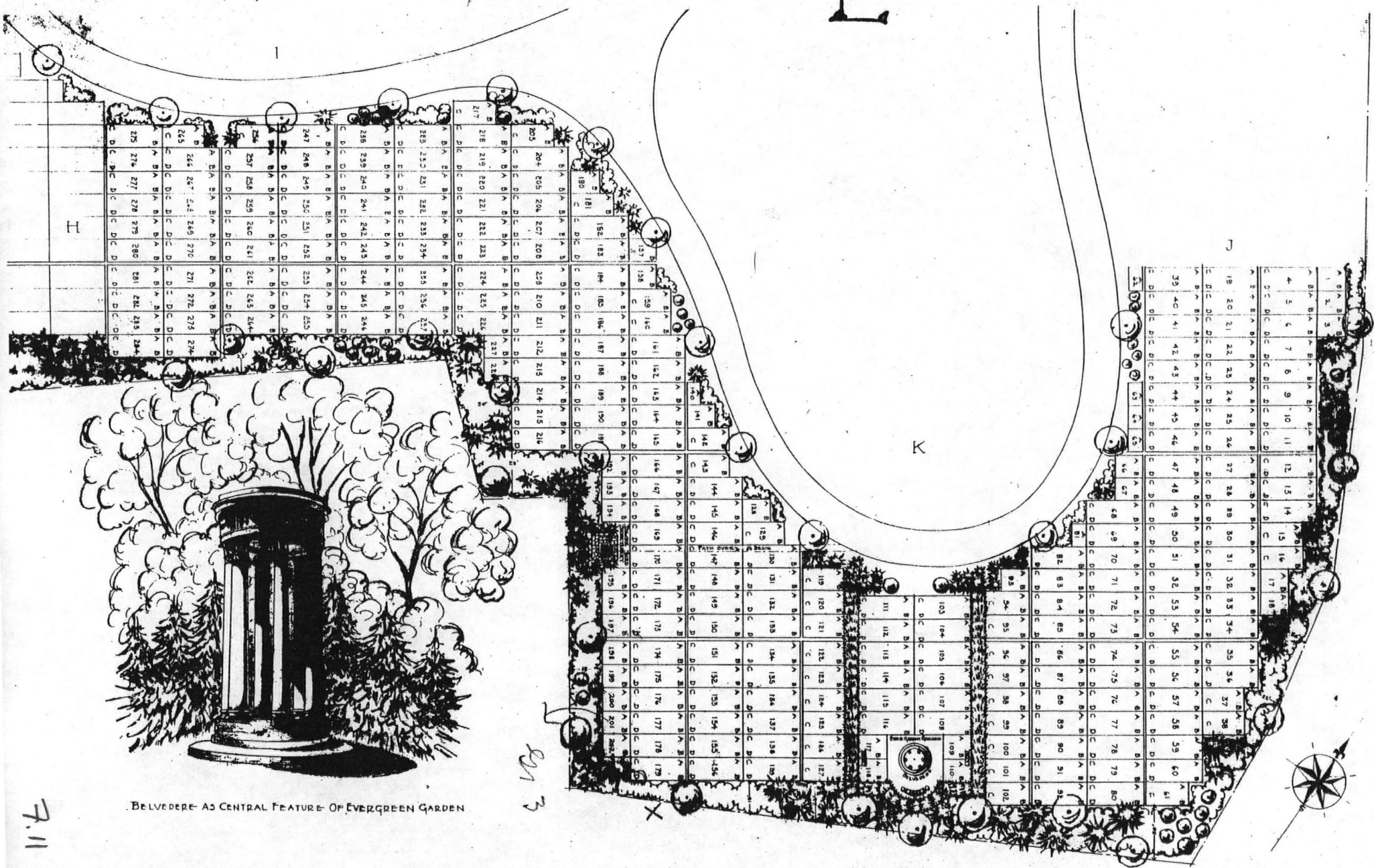


7.10

PLOT PLAN OF SECT "K" ~ MAPLE GROVE MEMORIAL PARK ~ N. YORK ~ 1/27/45 ~ G.W. McCLURE & SON ~ LANDSCAPE ARCHITECTS ~ BUFFALO, N.Y. ~ SCALE 1"=20' ~

179 a - 384
 B - 1-2-34

"L"

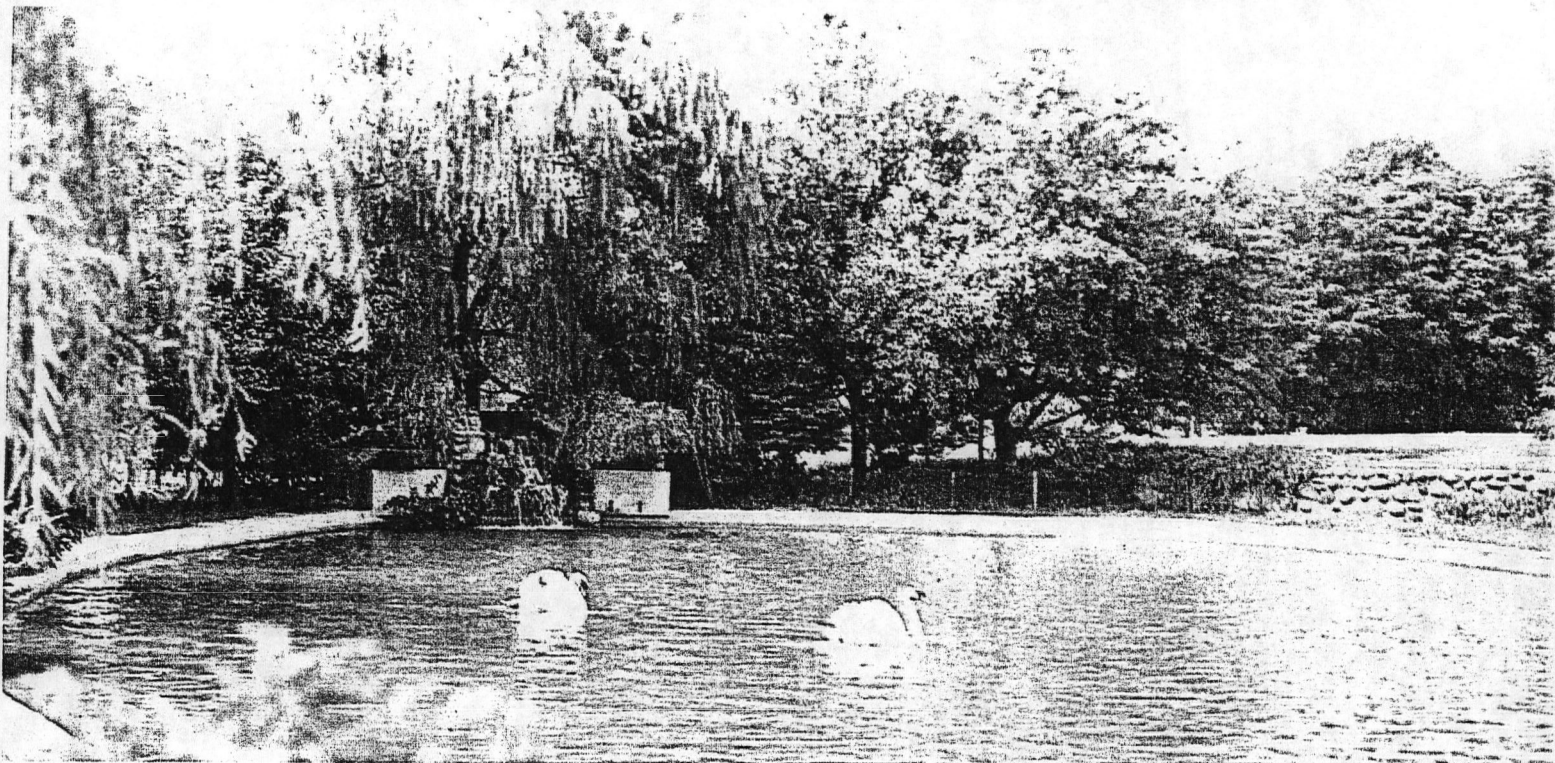


7.11

BELVEDERE AS CENTRAL FEATURE OF EVERGREEN GARDEN

PLOT PLAN FOR SECTION "L" ~ MAPLE GROVE MEMORIAL PARK ~ Kew Garden ~ NEW YORK ~
 G.W. McCURE & SONS LANDSCAPE ARCHTS. BUFFALO, N.Y. ~ SCALE: 1" = 20' ~ 145

MAPLE GROVE



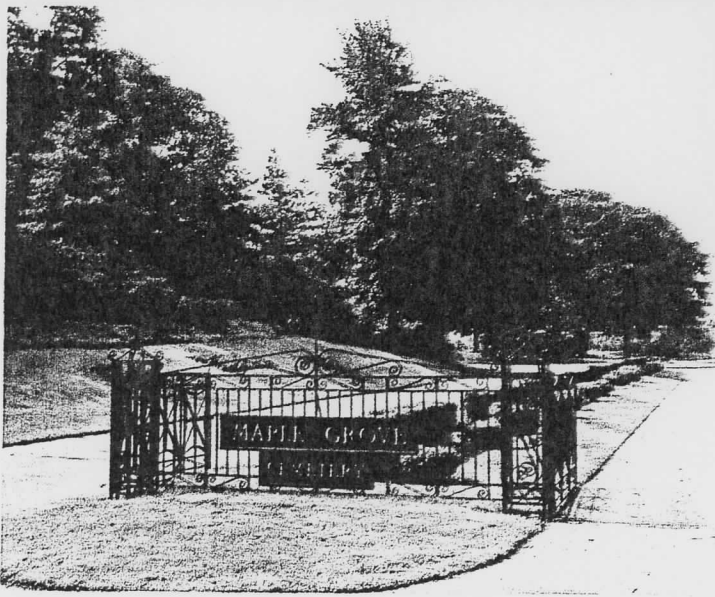
Swan Lake in Memorial Park Area.

CEMETERY

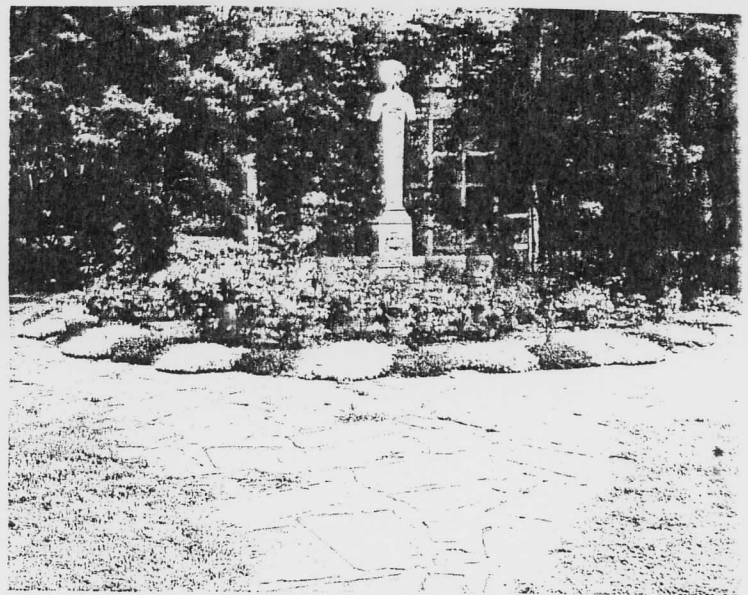
ESTABLISHED 1875 • NON SECTARIAN

A haven of peace and beauty within a great city

Administration Office: 83-15 KEW GARDENS ROAD, KEW GARDENS, N. Y. 11415



Gates at Queens Boulevard . . . Lead to wide roads convenient for parking close to one's own plot.



Peter Pan Garden.

MAPLE GROVE

an intimate family resting place

In 1875, Maple Grove Cemetery Association, a non-profit organization unpublicized and without commercial drive, was founded to serve the needs of the community in a family-like atmosphere. Today, approaching its centennial, MAPLE GROVE is unique in that it is easily accessible by subway, bus or car, combining within the very heart of the City, both a traditional Monumental Area and a modern Memorial Park, developed in 1943.

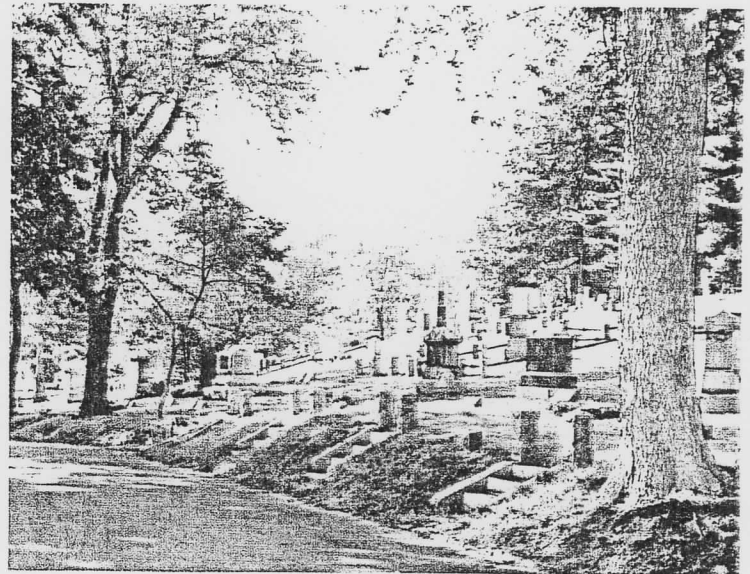
With natural beauty, MAPLE GROVE blends harmoniously the old and new concept of cemeteries, making it a place of spiritual peace and restfulness.

Stately century old maples and oaks tower over granite monuments on the multi-leveled terrain of the traditional area that descends to the gently rolling expanse of the Memorial Park. Selective landscaping gives full view of its spaciousness and the charm of its lake, retreat gardens and other features.

Our staff, aided by modern equipment, maintains the beauty of the grounds.

From a simple single grave or cremain garden space to mausoleum sites, MAPLE GROVE still offers a desirable choice to answer every individual need or taste.

While traditional headstones grace the Monumental Area, in the Park memorial bronze plaques are set flush with the turf. If desired, they may be equipped with finely molded bronze urns that provide receptacles for cut flowers which can be concealed when not in use.

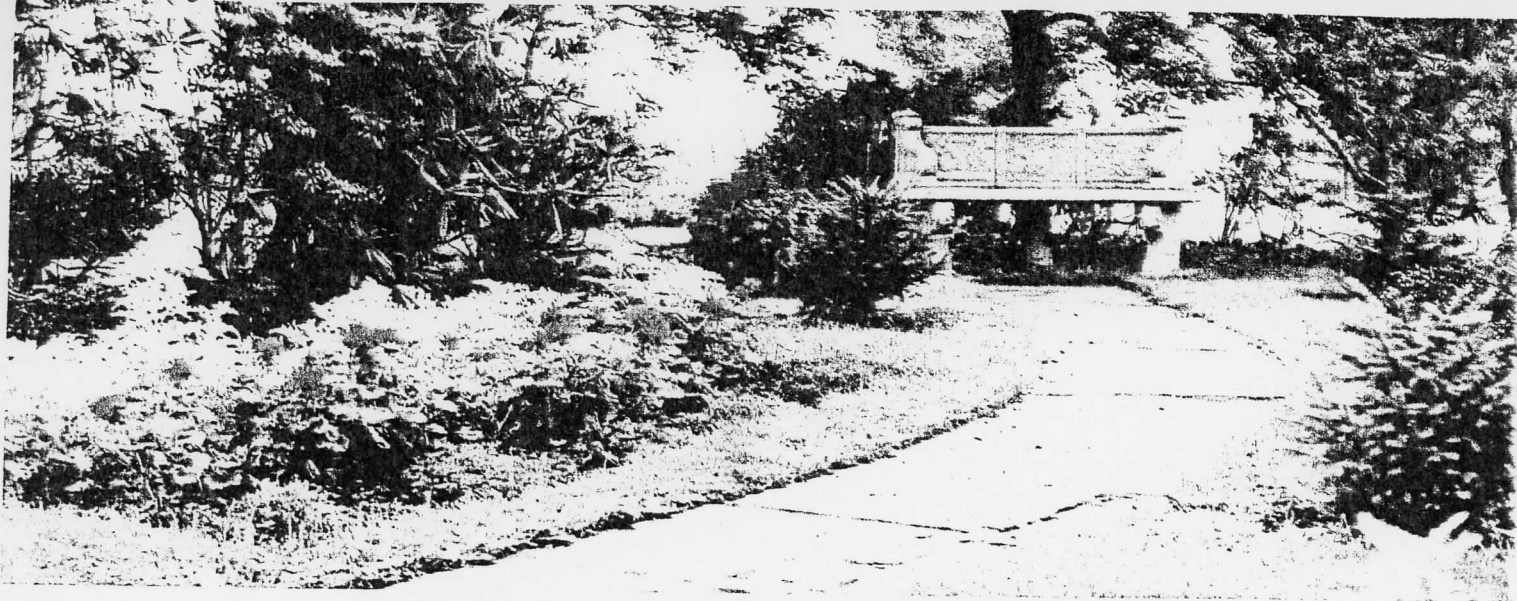


A view of the traditional Monumental Area.

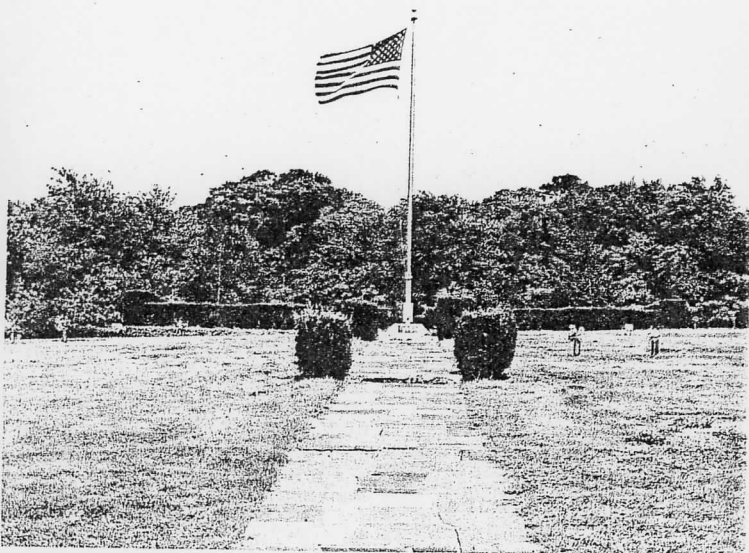
FOR PEACE C

To provide cemetery property in advance of need is a consideration you owe to yourself, your family and executors.

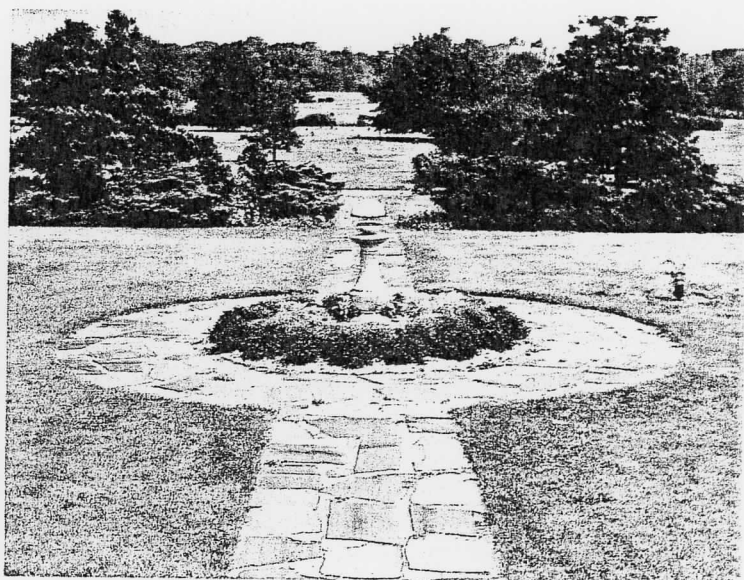
Moreover, there are practical reasons to do so while you can make your selection leisurely and wisely. By purchasing in advance of need, installment payments may be arranged. Avoid the hurried search for a suitable plot when rational thinking may be clouded by overwrought emotions at the time of bereavement. Urgency to act under pressure of time can easily result in unnecessary expenses. If cemetery property has already been provided for, the Funeral Director can make all necessary interment arrangements without disturbing the bereaved.



Retreat Gardens . . . Designed for undisturbed meditation and rest.



Presidential Circle . . . The high point in the Park, commanding a panoramic view of the Memorial Park area.



The view from the Silver Sphere.

MIND...SELECT YOUR PLOT NOW!

There is satisfaction in selecting a plot in MAPLE GROVE where ownership is FOREVER—no plots can be reclaimed by the cemetery. After all plots are sold MAPLE GROVE CEMETERY will continue to serve and to maintain the grounds and plots as provided for by the income from the Endowment and Permanent Maintenance Trust Funds.

There is convenience in selecting MAPLE GROVE because it is so accessible. The "F" and "E" express trains of the Independent Subway System stop four short blocks from the gates of the Administration Office and the "E" trains also stop at the Van Wyck Boulevard Station located about twenty feet from the cemetery's pedestrian gate to the Memorial Park Area.

Buses from all directions stop near the gates and the net of Express Parkways surrounds MAPLE GROVE. The BMT elevated Jamaica Line and the Long Island Railroad are additional transit facilities within convenient reach.

You are cordially invited to visit MAPLE GROVE and, while doing so, please stop at the Administration Office where information about available plots, their locations, prices, methods of payment and any other detail that you may desire to obtain, will be furnished to you with the friendly courtesy and understanding that are traditional at MAPLE GROVE. We do not employ salesmen, and there will be no follow up or sales pressure.



Gates at Administration Office.

MAPLE GROVE

Ideally located for convenient access from all parts of the Metropolitan area and Long Island.

FROM MANHATTAN:

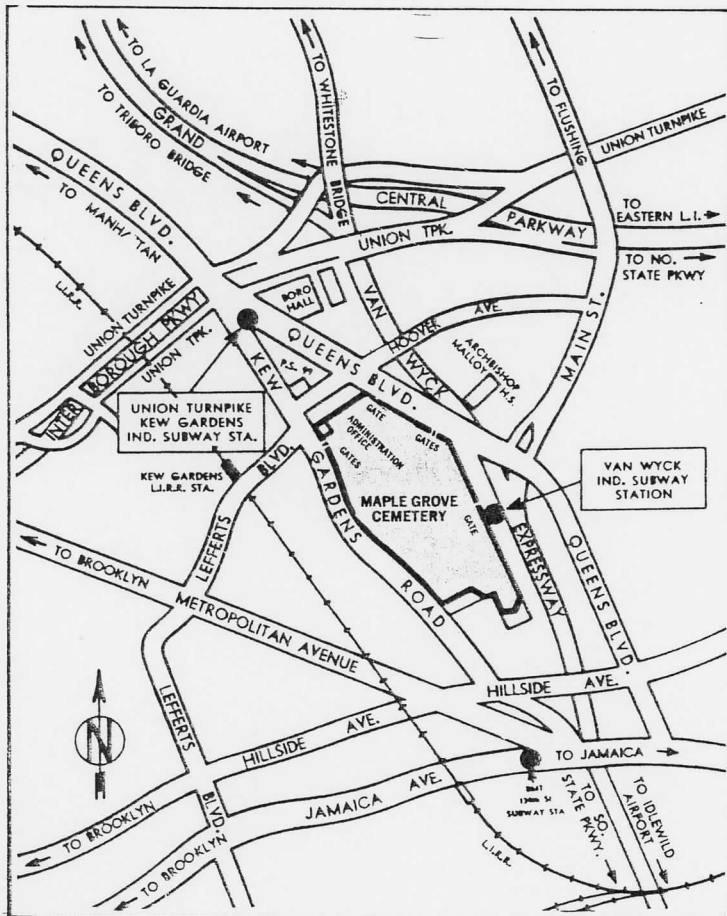
- Subway 8th Avenue Independent to Van Wyck Station
6th Avenue Independent to Union Turnpike Station
- L. I. Railroad to Kew Gardens Station
- Bus Starting from 2nd Avenue & 60th Street to entrance on Queens Boulevard
- Auto Queens Borough Bridge, east on Queens Boulevard to Park entrance

FROM BROOKLYN:

- Subway 8th Avenue to Van Wyck Station
BMT to 121st Street Station, bus on Lefferts Boulevard (119th Street) to Maple Grove
- Auto Belt Parkway & Southern State Parkway to Van Wyck Expressway along Queens Boulevard to entrance
Via Interborough Parkway

FROM LONG ISLAND:

- Auto Grand Central Parkway to Queens Boulevard or Southern State Parkway to Van Wyck Expressway to Queens Boulevard entrance



MAPLE GROVE CEMETERY ASSOCIATION
Administration Office:

83-15 Kew Gardens Rd., Kew Gardens, N. Y. 11415

212 LIggett 4-3600

212 LIggett 4-3601

News - African Americans, History

Source- ? ; Jan. 1896:

LONG ISLAND./ DEATH OF MILLIE TUNNELL./ AN AGED NEGRESS, WHO, AS A SLAVE, WAITED ON WASHINGTON.

Millie Tunnell, the oldest inhabitant of Long Island, died at Jamaica yesterday of old age. She was 111 years old last March. Up to a year or two ago she was very strong and active, but lately she has been failing rapidly. It is said that less than five years ago she could see to thread a needle. Recently she lost the sight of one eye and has been deaf for some time. She has lived in Jamaica about sixty years. She got her name of Tunnell from her owner in the old slavery days, Henry Tunnell, a wealthy planter of Accomac county, Va. In her youth she waited upon General Washington, when he visited her master's estate. As a slave she married and had children. The eldest of these, Martha, has kept her mother for many years. When Henry Tunnell died, a number of years before the war, he set all his slaves free. They lived in the South for a while and then came North, settling in Jamaica, where they have lived ever since. At first Millie and her daughter Martha went out to service, but they wanted to be together and though they were in some of the finest families in the place, they preferred a rough cottage where they could be together. The remains will be buried to-morrow afternoon in Maple Grove cemetery.



JAN. 1896

Jamaica. Afro-Am. Rec. PRE. 1904

Established 1845

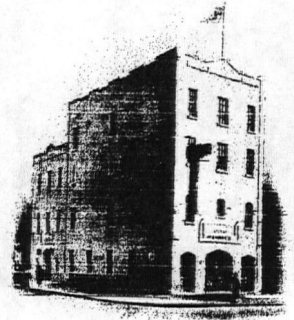
STEPHEN MERRITT

BURIAL AND CREMATION CO.
UNDERTAKERS, FUNERAL DIRECTORS

234 EIGHTH AVE., AT 22ND STREET
PHONE: CHELSEA 3-1200 S. L. BUCKINGHAM, MGR.
ADDRESS ALL COMMUNICATIONS TO THE CORPORATION



REV. STEPHEN MERRITT



NEW YORK CITY

Maple Grove Cemetery
Gentlemen
you will please open
grave 55 lot 300 Summit Plot
for Burial Helen Mae Flannigan
with her husband
Chas A Flannigan

STEPHEN MERRITT BURIAL & CREMATION CO.

Stephen Merritt Pres.
S. L. Buckingham Secy

OWNER-

stephen merritt

Dec'd - Helen Mae Flannigan
Killed Summit 300 - # 55

Warr
297 Proof

Office of

James E. Ware,

ARCHITECT.

No. 697 Broadway,

New York, Nov. 30th - 1875

Dear Sir,

I propose to, complete and furnish all necessary plans etc, specifications together with working drawings and details for Stone Cottage as per Design No. 3, and superintend the construction of same, for, and in consideration of One hundred (\$100⁰⁰) dollars in cash, and one plot of ground in the Maple Grove Cemetery, L. I., in a good location, containing area for ^{at least} twelve (12) graves; Provided, the necessary travelling expenses are paid by the association and the building is completed by the time mentioned in the building contract, and the cash paid upon the completion of the usual working drawings necessary to enclose the building.

I further agree to make no extra charge for work done on plans and specifications for receiving vault, and will furnish upon application within a reasonable time plans

and specifications for principal entrance
gates, posts and fence work without making
an extra charge.

I remain

Yours very truly

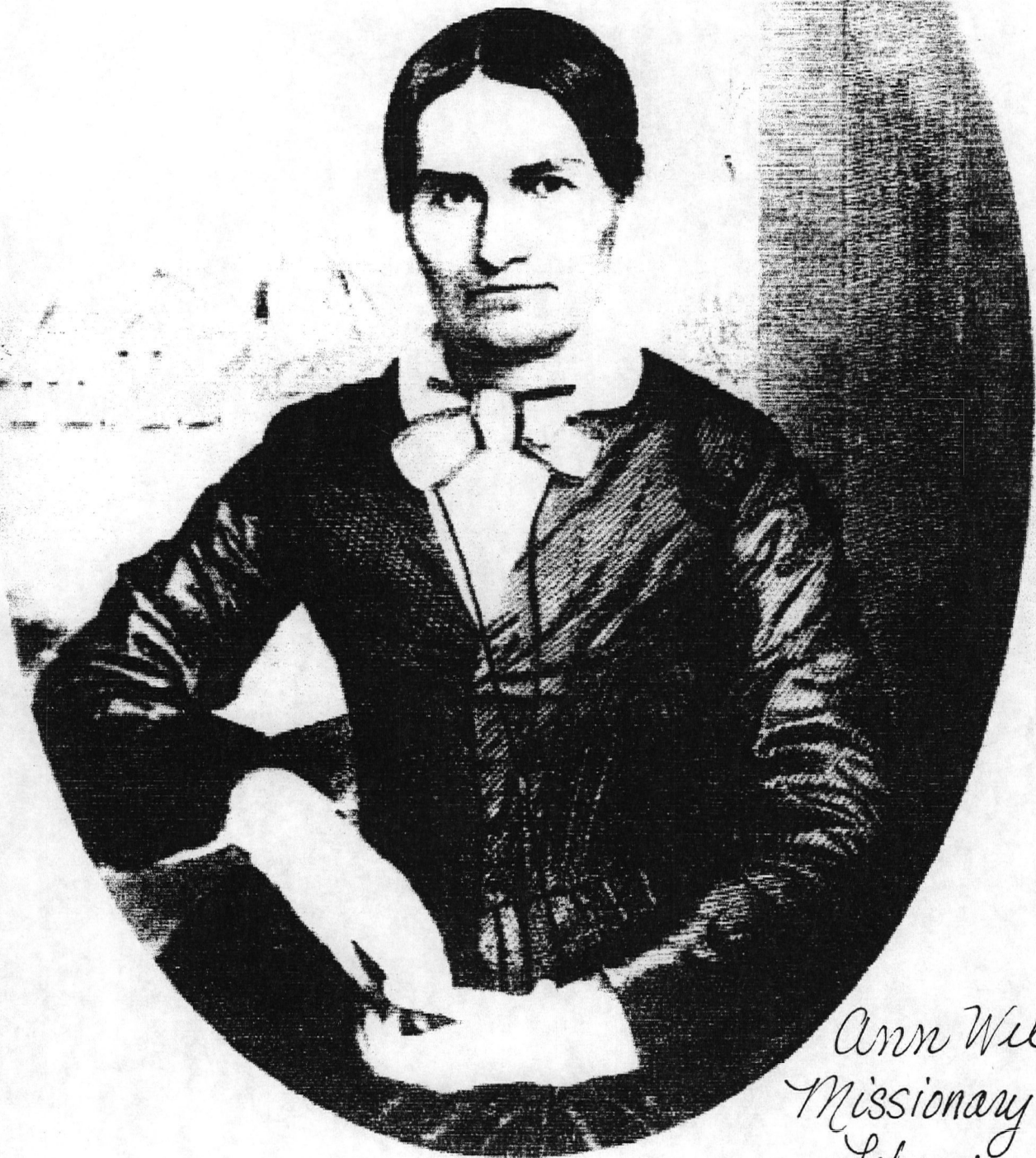
James E. Ware

To
Mr. Charles L. Goodwin Secy
Nash Grove Lumber Assn.
M.

Accepted Dec 3/15
Chas L Goodwin

James E. Ware
Nov 23/15

off.



*Ann Wilkins
Missionary to
Liberia*

Warren, Boston [Reproduction, Methodist Prints]
mailto: /Macintosh%20HD/System%20Folder/
Preferences/Netscape%20Users/nancy%20cataldi/

*prospect 340
Died 1857
reinterred 1886 maple grove*

UNITED STATES DEPARTMENT OF THE INTERIOR
NATIONAL PARK SERVICE

NATIONAL REGISTER OF HISTORIC PLACES
EVALUATION/RETURN SHEET

REQUESTED ACTION: NOMINATION

PROPERTY NAME: Maple Grove Cemetery

MULTIPLE NAME:

STATE & COUNTY: NEW YORK, Queens

DATE RECEIVED: 7/06/04 DATE OF PENDING LIST: 7/27/04
DATE OF 16TH DAY: 8/11/04 DATE OF 45TH DAY: 8/19/04
DATE OF WEEKLY LIST:

REFERENCE NUMBER: 04000874

REASONS FOR REVIEW:

APPEAL: N DATA PROBLEM: N LANDSCAPE: N LESS THAN 50 YEARS: N
OTHER: N PDIL: N PERIOD: N PROGRAM UNAPPROVED: N
REQUEST: N SAMPLE: N SLR DRAFT: N NATIONAL: N

COMMENT WAIVER: N

ACCEPT RETURN REJECT 8/20/04 DATE

ABSTRACT/SUMMARY COMMENTS:

Entered in the
National Register

RECOM./CRITERIA _____

REVIEWER _____ DISCIPLINE _____

TELEPHONE _____ DATE _____

DOCUMENTATION see attached comments Y/N see attached SLR Y/N

If a nomination is returned to the nominating authority, the nomination is no longer under consideration by the NPS.

①

LOOKING NORTH



MAPLE GROVE CEMETERY KEW GARDENS, NY

ADMINISTRATION BUILDING - MAIN ENTRANCE - KEW GARDENS ROAD

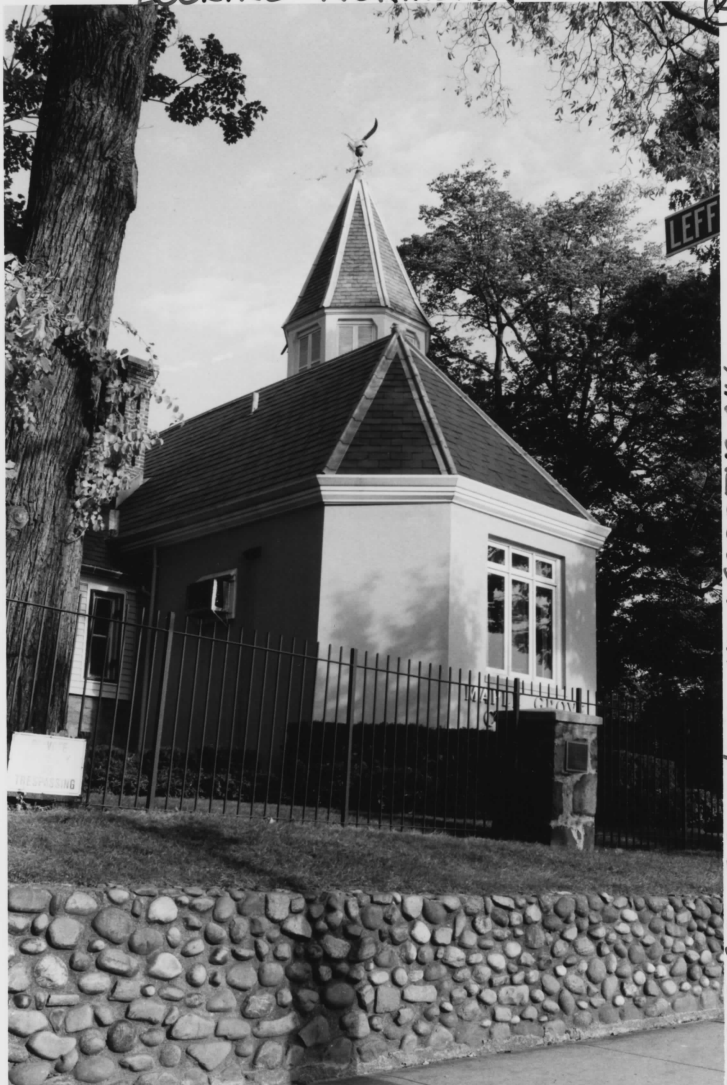
Maple Grove Cemetery
Queens Co, N.Y.
1.

© Nancy
Catalano

ORIGINAL FILED 710325 0212 N N

LOOKING NORTHEAST

2



MAPLE GROVE CEMETERY KEW GARDENS, NY

ADDED WING TO ADMINISTRATION BLOG.

Maple Grove Cemetery
Queens Co, ny

2

DUGGAL B/MC70325 0212

photo by
nancy cataldi ©

3) LOOKING NORTHWEST



Kew Gardens, NY

ADMINISTRATION BLDG - JAMES E. WARE ARCHITECT MAPLE GROVE Cemetery

Maple Grove Cemetery
Queens Co, NY

3.
photo

by nancy cataldi

DUGGAL B/WIC433250212.NH

4



Kew Gardens, NY

ADMINISTRATION BUILDING LOOKING SOUTHWEST MAPLE GROVE CEMETERY

Maple Grove Cemetery
Queens Co, NY
4

photo by
nancy cataldi

BU66RL BWM21274 0212 HN

5)

LOOKING WEST



MAPLE GROVE Cemetery KEW GARDENS

1831 BLACKSMITH SHOP ATTACHED TO Administration BLS.

photo by
nancy cataldi

Maple Grove Cemetery
Queens Co. N.Y.

5

LIBRARY B/W/2007/4 0212 10M

6

LOOKING Southeast



Henry Heath - MAPLE MAPLE GROVE Cemetery Kew Gardens NY

DUGGAL B/M 19460 C 2 H 2

Photo by
Nancy
Catalano

Maple Grove Cemetery
Queens Co., NY

6.



LOOKING N.E. Between MAPLE (L) + Summit (R)

MAPLE GROVE CEMETERY KEW GARDENS, NY

photo by Nancy Catalano ©

Maple Grove Cemetery
Queens County, NY
7.

USGRL B/M110274 022 N M

8

72

N. EAST



MAPLE GROVE CEMETERY KEW GARDENS

LOOKING EAST - MAPLE PLOT - SNEDEKER OBELISK & STONES

Maple Grove Cemetery
Queens Co, NY
8.

DUGGAL B/W 11274 0212 M 1

photo
by
Nancy Cataldi
©

9
LOOKING EAST



MAPLE GROVE CEMETERY, KEW GARDENS, N.Y.

MAPLE SECTION - DON MAROULS GRAVE - LOOKING EAST

photo by
nancy cataldi

Maple Grove Cemetery
Queens County, NY
9.

MUSGRAVE B/10/23/74 0212 N 2

LOOKING SOUTHWEST

27



Kew Gardens
Maple Grove Cemetery

LOTT FAMILY + TRANSFERRED MEMBERS

MAPLE

Maple Grove Cemetery
Queens County, NY

10

photo by
Nancy Cataldi ©

UNIVERSITY MICROFILMS/12/74 0212 N 1

11 Looking East



Kew Gardens, NY

JOHN SUTPHIN MAPLE MAPLE GROVE cemetery

Maple Grove
Cemetery
Queens Co, NY

DUGGAL B/WF490460 0212 N 1

11.

Photo by
Murray Catfaldin



MAPLE GROVE CEMETERY, NY 1
KEW GARDENS

RADKE-BENDER

MAPLE PLOT

Maple Grove
Cemetery

Queens Co., NY

DUBGAL B/WF121460 0212 N 2

12.

© 2007 Nancy Cataldi
photo by

LOOKING WEST



IRON GATE

MAPLE SECTION

MAPLE GROVE

CEMETERY Kew

Gardens, New York

photo by

nancy cataldi

Maple Grove Cemetery
Queens Co, ny
13.

DIGITAL E/M/08/460 0212



SEIB PLOT - MAPLE SEC. - MAPLE GROVE NYC

Maple Grove
Cemetery
Queens Co. NY
14.

DUGAL B/M(04)460 0212 N 3

photo by:
Nancy Cataldi

15 MAPLE ON RIGHT - PROSPECT AHEAD



MAPLE GROVE CEMETERY KEW GARDENS, NY

Between MAPLE + PROSPECT LOOKING NORTH

Maple Grove Cemetery
Queens Co, n.y
51.

photo by
nancy
catalduci©

DIGSRL B/W/2512/9 0212 H 2



MAPLE GROVE CEMETERY KEW GARDENS, NY

JAMES E. WARE - ARCHITECT OF MG - PROSPECT

Maple Grove
Carrington
Queens Co, NY

DUGGAL B/WL611274 0212 M

16.

17 LOOKING EAST (MAPLE BEHIND)



MAPLE GROVE CEMETERY - KEW GARDENS N.Y.

PYRAMID LODGE - PROSPECT 1

Maple Grove
Cemetery

DUGGAL B/WC180460 0212 N 2

Queens Co, Ny

17.

photo by
Nancy

©
estate



MAPLE GROVE CEMETERY
 KEW GARDENS CEMETERY
 New York

BRIGGS - PROSPECT

Maple Grove
Cemetery
Queens Co. ny

18.

photo by
nancy cataldi ©



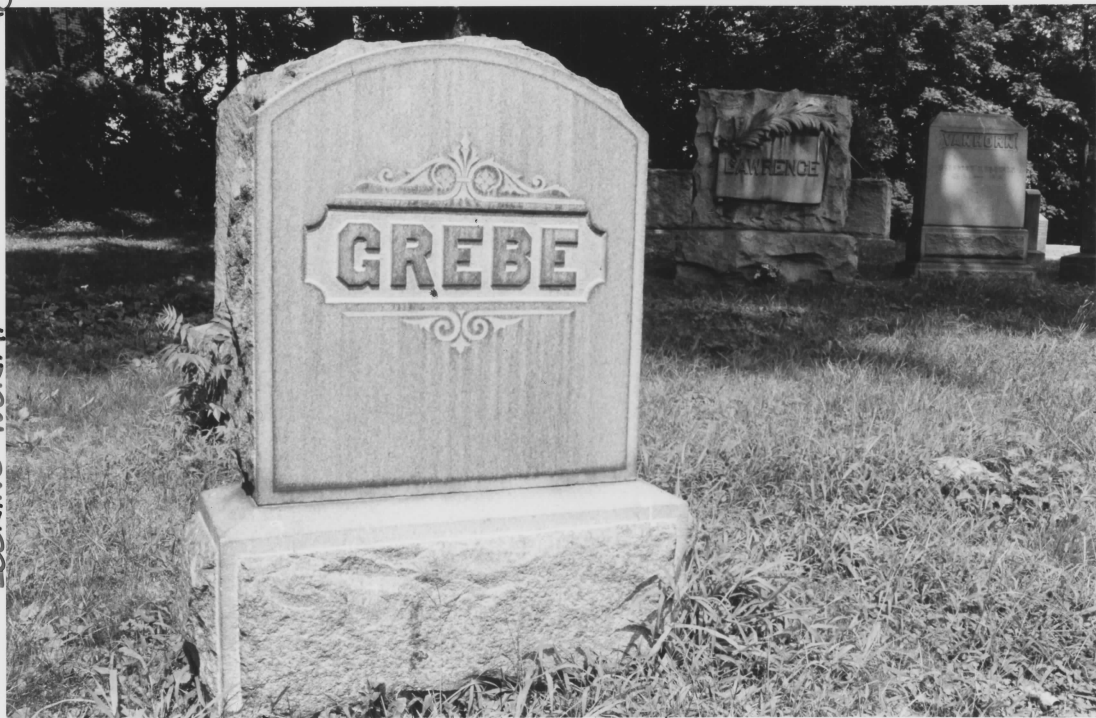
MAPLE GROVE CEMETERY KEW GARDENS, New York

Maple Grove Cemetery
Queens Co, NY
19

DUGGAL B/W(41)460 0212 N 3

photo
by
nancy cataldi ©
19.

LOOKING NORTH



GREBE FAMILY PLOT

PROSPECT

MAPLE GROVE CEMETERY KEW GARDENS - NY

Nancy Cataldi ©

Maple Grove Cemetery
Queens Co, NY
20.

DUGGRL HALLS 0460 0212 N 2

21

LOOKING NORTH



MAPLE GROVE CEMETERY KEW GARDENS NY

ROHE

PROSPECT

Maple Grove Cemetery
Queens Co, NY

DUGGAL B/WL32J460 0212 N 2

21.

Marion Caldwell



NEW YORK
Kew Gardens
MAPLE GROVE CEMETERY

SOMERS - PROSPECT

Maple Grove Cemetery
Queens Co. NY

22

DUGGAL B/WL30J460 0212 N 1

photo by
nancy cataldi ©

23

Looking North



MAPLE GROVE CEMETERY KEW GARDENS, NY

ANGEL PROSPECT

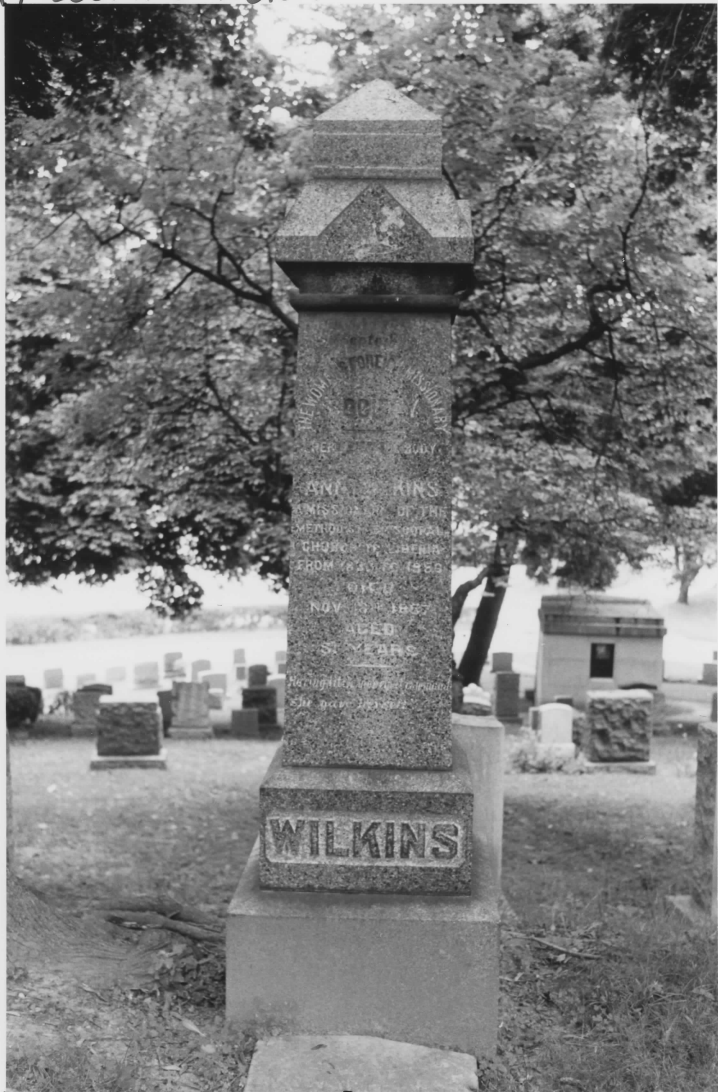
Maple Grove Cemetery
Queens Co, NY

23.

photo by
nancy
cataldi

22 N N N 1160926 0911 N N N 22 GALAXY INC 1463926 0911 N N N 22

24 LOOKING NORTH



MAPLE GROVE CEMETERY

ANN WILKINS (MISSIONARY) PROSPER

Maple Grove Cemetery
Queens Co, NY

24

DUGGAL B/W[24]460 0212 N N

Photo
by Nancy Cataldi ©

25 LOOKING SOUTHEAST



MAPLE GROVE CEMETERY - KEW GARDENS, NY

JOHN E BOND

summit

Maple Grove Cemetery
Queens Co, ny

25

DUGGAL B/WC723460 0212 N 1

photo by nancy cataldi



Kew Gardens, NY

OBELISK MAPLE GROVE cemetery summit

Maple Grove Cemetery
Queens Co, NY
26

DUGGAL B71073325 0212 N 1

Photo by Calabro
Nancy

27

LOOKING WEST



ALBON PLATT MAN
BORN NOV. 14, 1845
DIED APRIL 27, 1920
GOD IS LOVE

ALBON PLATT MAN II

IMAGE 14B Summit

Maple Grove Cemetery
Queens Co, NY
27

DUGGAL B/W[25]325 0212 N-2

photo
by nancy catala

28

LOOKING NORTH



MAPLE GROVE CEMETERY - KEW GARDENS, NY

Elisabeth Riis - trees planted by Jacob Riis - Summit

Maple Grove Cemetery
Queens Co, NY

28

DUGGAL B/W[59J460 0212 N 2

photo
by
Nancy Catadda ©

29 LOOKING SOUTHEAST



MAPLE GROVE CEMETERY KEW GARDENS NY

ORDENSTEIN - Summit

Maple Grove Cemetery
Queens Co, N.Y

29

DUGGAL B-WF73J460 0212 N N

photo
by nancy
cataldi

30
LOOKING EAST



SOUTH BORDER ALONG KEW GARDENS ROAD

MAPLE GROVE CEMETERY, KEW GARDENS, NY

Photo by
Nancy Cataldi

Maple Grove Cemetery
Queens Co, NY
30

DIGITAL B/MJ 3460 0212112



NEW GARDENS NY

SOUTH BORDER - LOOKING EAST - MAPLE GROVE cemetery

Maple Grove Cemetery
Queens Co, NY
31

LIBRARY
M153274 U212 N 2

photo by
Nancy Caldwell
(C)

32



South Border - looking Southwest

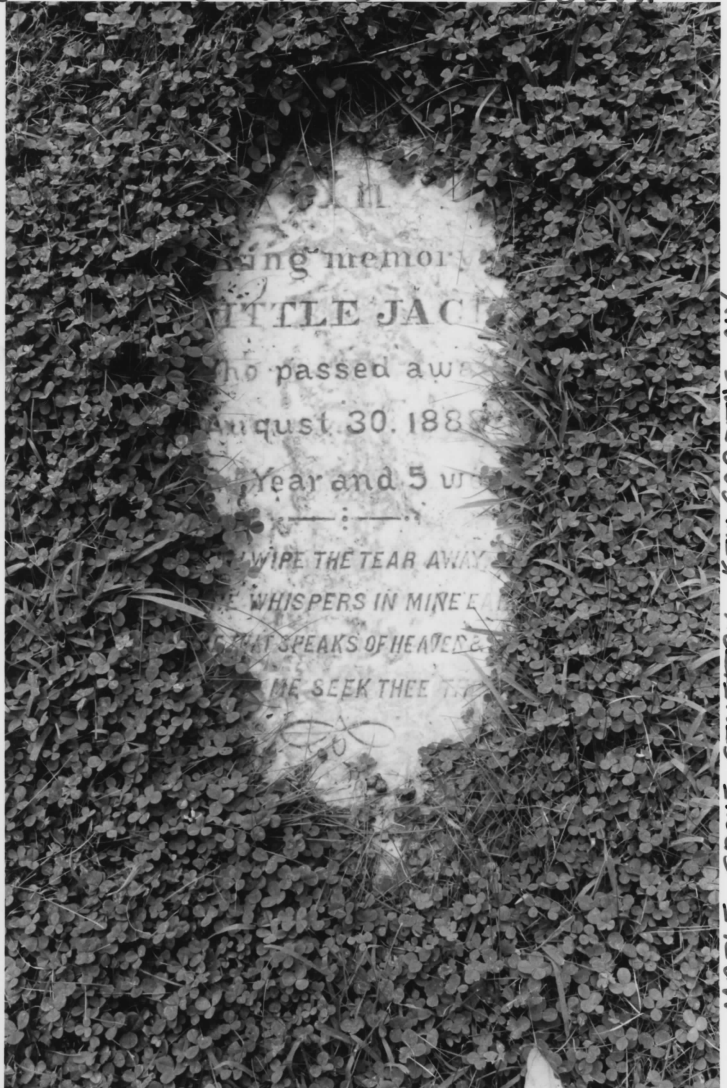
MAPLE GROVE CEMETERY KEW GARDENS, N.Y.

JNC173J926 0911 N N N 22

McG 6 Grove Cemetery
Queens Co, NY

32

©
Photo by
Nancy Cottrell



MAPLE GROVE CEMETERY KEW GARDENS, NY

FLUSH WITH GROUND "LITTLE JACK" SOUTH BORDER

Maple Grove
Cemetery
Queens Co, ny

33

DUGGAL B/W 563460 0212 N 2

photo by
Manny Catalano

34

LOOKING EAST



MAPLE GROVE CEMETERY KEW GARDENS NY
FOER

LARGE OAK + SPARSE GRAVES SOUTH SIDE

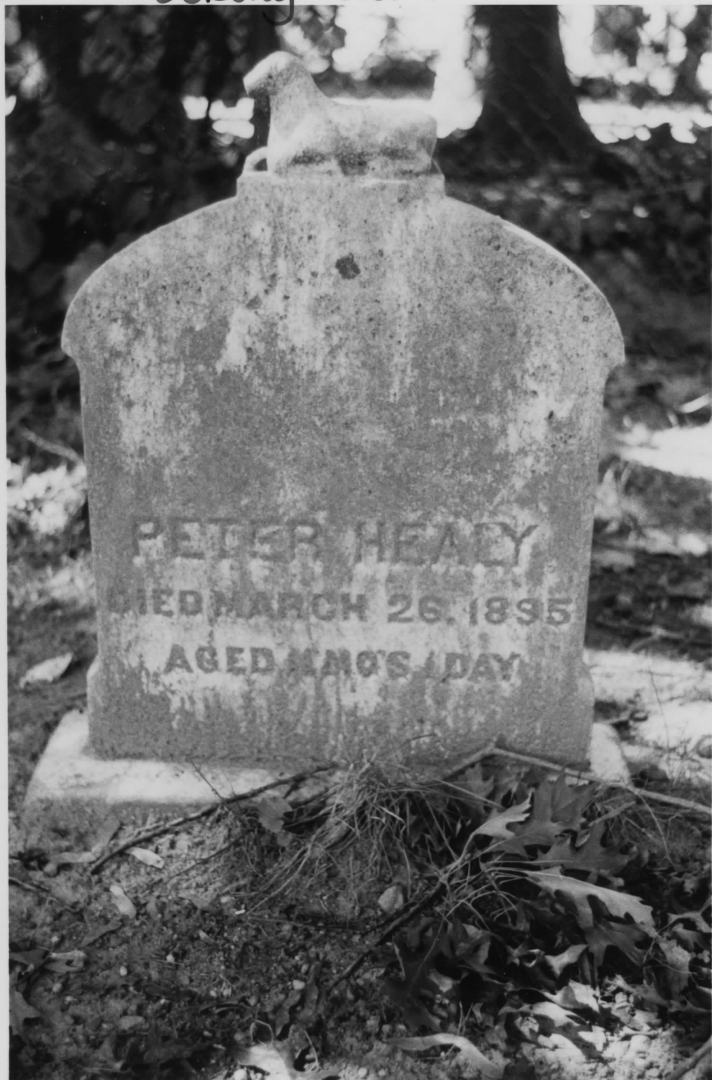
Maple Grove Cemetery
Queens Co, NY

DUGGAL B-MLU1325 0212 N H

34

photo by
nancy cataldi ©

35 Looking South



MAPLE GROVE CEMETERY Kew Gardens, NY

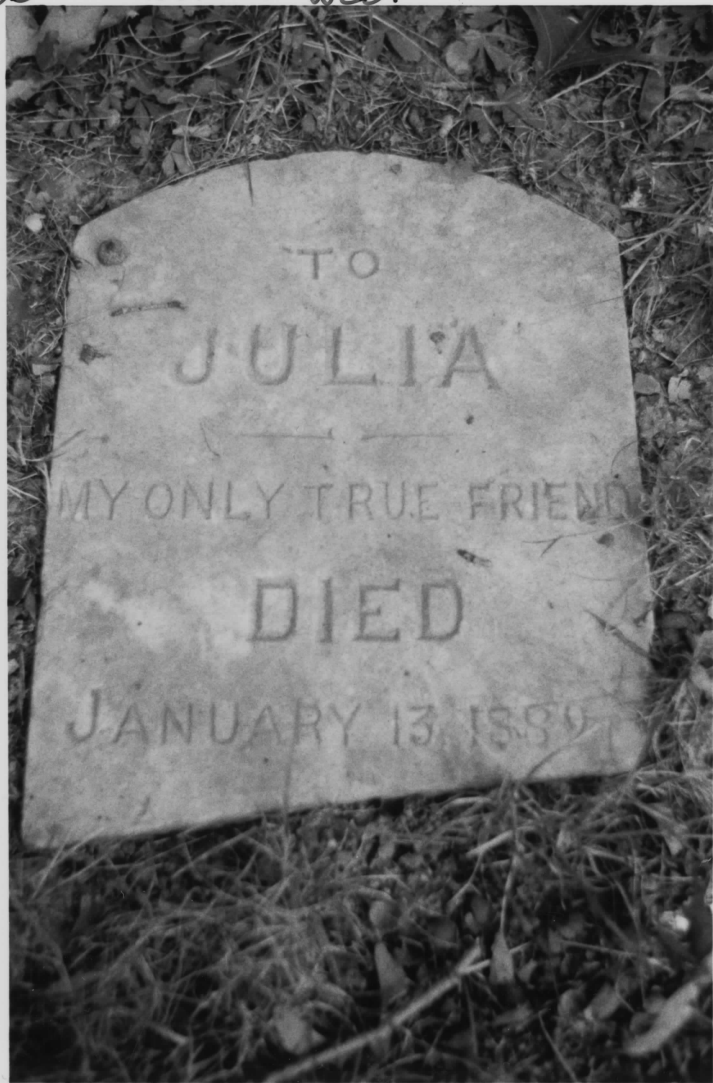
Peter Healy South Border

Maple Grove Cemetery
Queens Co, NY

35

photo by
nancy cataldi

22 N N N 11610926 0911 N N N 22 GALAXY INC161J926 0911 N N N 22



MAPLE GROVE CEMETERY KEW GARDENS, NY

Julia The DOG - SOUTH BORDER



OF
 WOTHEP
 VALIER
 JET MAY 25 1818
 FATHER
 VALIER
 DIED NOV 18 1810
 FATHER
 DOTTI GIU
 DIED AUG 25 1815
 In God's hands
 our souls are safe

GIUSEPPE IZZO
 DIED BY ELECTRIC SHOCK
 JUNE 13, 1915
 AGE 20 YEARS

MAPLE GROVE CEMETERY KEW GARDENS, NY

G. IZZO SOUTH BORDER

photo by
Manny Cataldi

Maple Grove Cemetery

GALAXY INC 117926 0911 N N N 62

Queens Co, ny

37.



NY
MAPLE GROVE CEMETERY KEW GARDENS

WAGNER-MONUMENT - CENTRAL PLOT

Made Grove Cemetery
Queens Co., N.Y.

38

DUGGAL B/WC44J279 0212 N 1

photo by
Nancy Cataldi ©



Central Plot Maple Grove Cemetery

Maple Grove Cemetery
Queens Co., NY
39

DUGGILL 2-11-11 463460 0212 N 1

40



MAPLE GROVE CEMETERY Kew Gardens, NY

Receiving Tomb James E. Ware

LINDEN Section

Maple Grove Cemetery
Queens Co, ny

40

GALAXY INC. 1201926 0911 1111112

© Photos by Nancy Cataldi

41

LOOKING SOUTH



NEW GARDENS NY

ROAD Between Summit + Linden

MAPLE GROVE cemetery

Maple Grove Cemetery
Queens Co., NY

41.

manuscript catalog

photo by

DIGITAL ERM451274 0212 H 1



LINDEN SECTION

LOOKING NORTHWEST

MAPLE GROVE CEMETERY KEW GARDENS, N.Y.

Photo by
Mama
Catala

Maple Grove Cemetery
Queens Co, ny
42

GALAXY INC 148J92A09J N N N 12

43



Kew Gardens NY

Border Section Looking East Maple Grove Cemetery

Maple Grove Cemetery
Queens Co., ny
43

GALAXY INC 1091927 0911

photo
by nancy cataldi ©

44



Kew Gardens, N.Y.

BORDER SECTION Looking Northeast maple grove Cemetery

Maple Grove Cemetery
Queens Co. N.Y.

GALAXY JNC1127926 0911 N N N 12

44

photo by
nancy
catalitic

Peter Pan Garden Memorial Park MAPLE GROVE

Looking South

K
E
W
G
A
R
D
E
N
S



Maple Grove Cemetery
Queens Co, NY

45

UNIVERSAL B/W 31601 0212 1-3

9/11+ Flaggpole President's Circle MAPLE GROVE

K
E
W
G
A
R
D
E
N
S

N
Y



Maple Grove Cemetery
Queens Co, NY
46

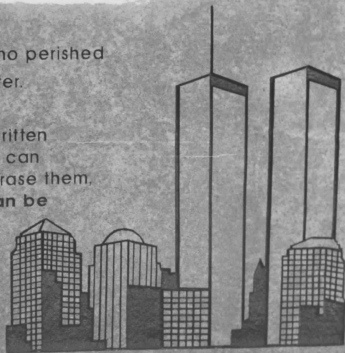
DUGGAL B/WI210601 0212 1-3

These Starlights honor the memory of those who perished
on September 11, 2001 at the World Trade Center.

"...The laws that govern mankind cannot be written
on the water as that is always changing, nor can
they be written in the sand as the wind will erase them,
but if they are written in the stars they can be
read and remembered forever.

Navajo Legend

Maple Grove Cemetery
September 25, 2003



K
E
W
G
A
R
D
E
N
S
N
Y

Maple Grove Cemetery
Queens Co, NY

47

US95818/M114601 0212 1-1

9/11 Star Memorial

Memorial Park

MAPLE GROVE



X
E
W
G
A
R
D
E
N
S
N
Y

48 #

Maple Grove Cemetery
Queens Co, ny

48

DUGGILL 07/01/1960 1 0212 1 1

Sec B looking east Memorial Park maple grove cemetery



K
E
W
G
A
R
D
E
N
S
N
Y

Maple Grove Cemetery
Queens Co, NY

49

QUEENSLAND MUSEUM 10212 1-2

Sect "C" Frozen Lake/waterfall Memorial Park maple grove Cemetery



looking southeast

K
E
W
G
A
R
D
E
N
S
N
Y

Maple Grove Cemetery
Queens Co, N.Y

50

DISPERSAL/M/301601 0212 1-2

Section G - Memorial Park - maple grove cemetery



Kew
gardens
NY

Maple Grove Cemetery
Queens Co., N.Y.

51

DUGGAL 1591601 0212 1-3

section 2 Memorial Park Maple Grove Cemetery

Looking South



KEY
GARDEN
2 NY

5
8

Maple Grove Cemetery
Queens Co. NY

52

DIGITAL BY MICHAEL J. O'NEILL 0212 1-2

sect i Peristyle Memorial Park Maple Grove Cemetery

looking east

KEW
GARDENS
N.Y.



53

9

Maple Grove Cemetery
Queens Co., NY

53

DUGBRL EMTS 0601 0212 1-2

Florentine well Head Memorial Park - Maple Grove Cemetery sec K

Looking North

K
E
G
A
R
D
S
N
Y



54

K

Maple Grove Cemetery
Queens Co, NY

54

DUPONT B/W/1573601 0212 1-2

Liberty Garden

Maple grove Cemetery

Kew gardens

N
Y

Looking North



Maple Grove Cemetery
Queens Co, NY

55

QUEENSLAND 19450601 0212 1-1

Bell Garden Memorial Park

MAPLE GROVE Cemetery

looking north

NEW GARDENS NY

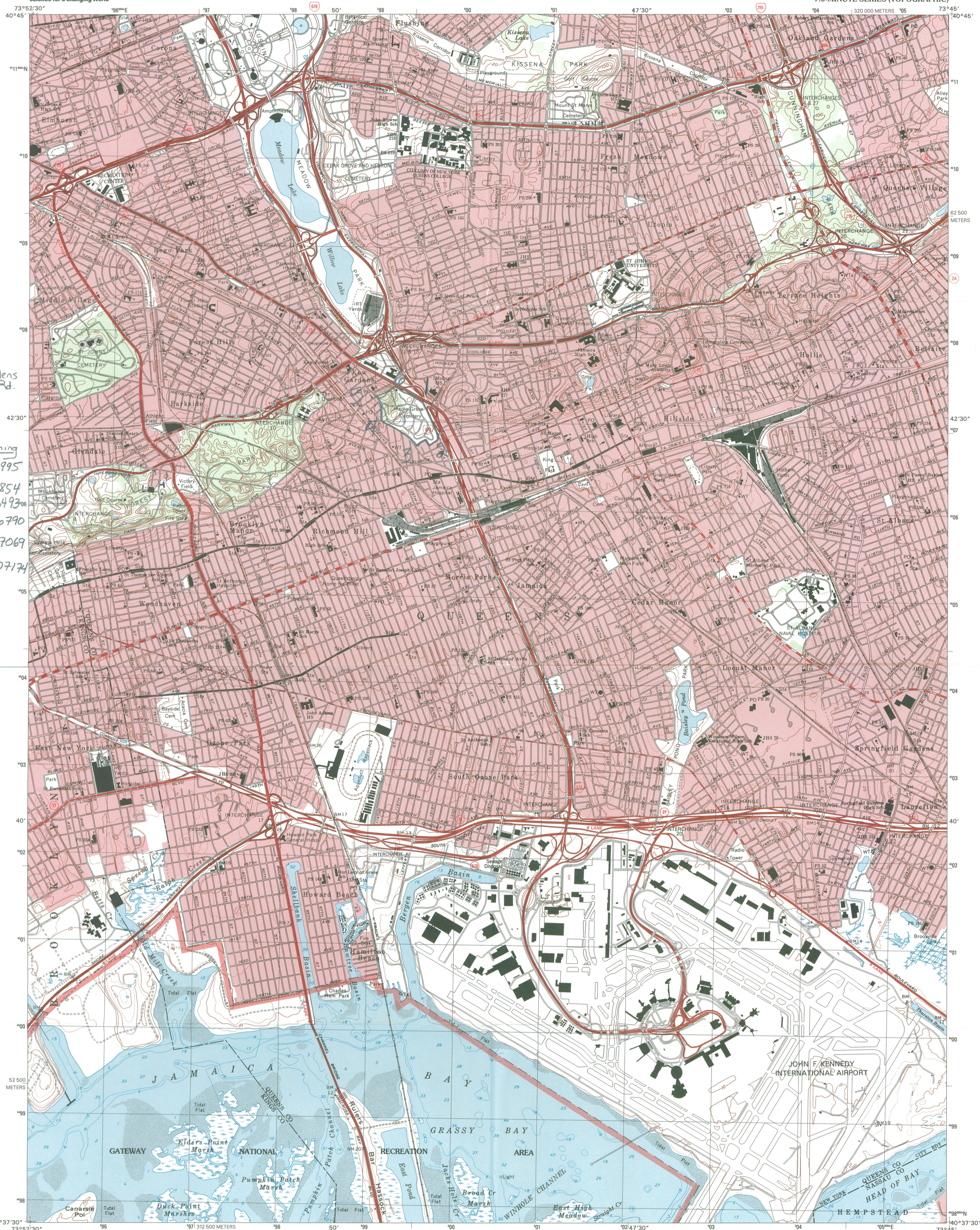


56 Y2

Maple Grove Cemetery
Queens Co, ny

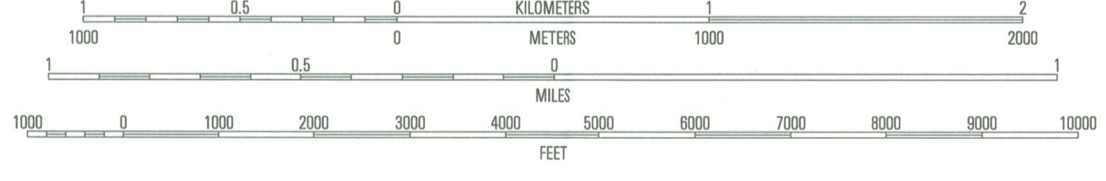
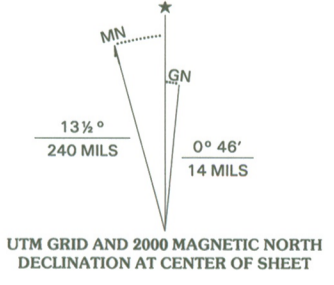
56

MUSEUM F/ML61J601 0212 1-1



Maple Grove Cemetery
83-15 Kew Gardens Rd.
Queens Co, NY
UTM Coordinates
Zone 18
Easting Northing
1) 599528 4506995
2) 599701 4506854
3) 599454 4506493
4) 599069 4506790
5) 598987 4507069
6) 599190 4507174
Jamaica Quad
1:24000

Produced by the United States Geological Survey
Topography compiled 1953. Planimetry derived from imagery taken 1994 and other sources. Survey control current as of 1956
Selected hydrographic data compiled from USCGS Chart 542 (1967)
This information is not intended for navigational purposes
North American Datum of 1983 (NAD 83). Projection and 1 000-meter grid: Universal Transverse Mercator, zone 18
2 500-meter ticks: New York Coordinate System of 1983 (Long Island zone)
North American Datum of 1927 (NAD 27) is shown by dashed corner ticks. The values of the shift between NAD 83 and NAD 27 for 7.5-minute intersections are obtainable from National Geodetic Survey NADCON software
There may be private inholdings within the boundaries of the National or State reservations shown on this map
Landmark buildings verified 1956



CONTOUR INTERVAL 10 FEET
SUPPLEMENTARY CONTOUR INTERVAL 5 FEET
NATIONAL GEODETIC VERTICAL DATUM OF 1929
TO CONVERT FROM FEET TO METERS, MULTIPLY BY 0.3048
DEPTH CURVES AND SOUNDINGS IN FEET, DATUM IS MEAN LOWER LOW WATER
THE RELATIONSHIP BETWEEN THE TWO DATUMS IS VARIABLE
THE MEAN RANGE OF TIDE IS APPROXIMATELY 5.5 FEET

THIS MAP COMPLIES WITH NATIONAL MAP ACCURACY STANDARDS
FOR SALE BY U.S. GEOLOGICAL SURVEY, P.O. BOX 25286, DENVER, COLORADO 80225
A FOLDER DESCRIBING TOPOGRAPHIC MAPS AND SYMBOLS IS AVAILABLE ON REQUEST



ROAD CLASSIFICATION
Primary highway
hard surface
Secondary highway
hard surface
Light-duty road, hard or
improved surface
Unimproved road
Interstate Route
U.S. Route
State Route

1	2	3	1 Central Park
2	3	4	2 Flushing
3	4	5	3 Sea Cliff
4	5	6	4 Brooklyn
5	6	7	5 Lumbrook
6	7	8	6 Coney Island
7	8		7 Far Rockaway
8			8 Lawrence

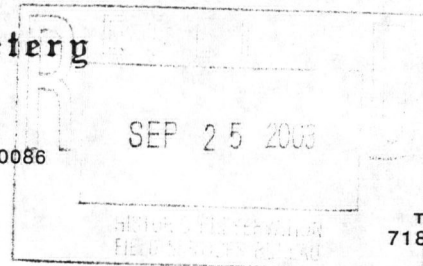
ADJOINING 7.5' QUADRANGLE NAMES

JAMAICA, NY
1994
NIMA 6265 III NE-SERIES V821



Maple Grove Cemetery

83-15 KEW GARDENS ROAD
P.O. BOX 150086
KEW GARDENS, NEW YORK 11415-0086



TELEPHONE
718-544-3600
FAX
718-544-2227

September 22, 2003

Kathleen A. Howe
Historic Preservation Specialist
New York State Office of Parks
Recreation and Historic Preservation
Historic Preservation Field Services Bureau
Peebles Island, PO Box 189
Waterford, NY 12188

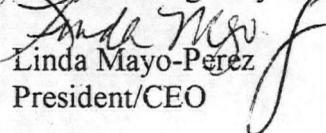
Dear Ms. Howe:

Thank you for including us on your tour of potential National Register sites in Queens last week. We are delighted to be considered for potential listing on the State and National Register. The National Register status, if acquired, will be a wonderful enhancement to the historic work currently in progress in the Richmond Hill/Kew Gardens communities. The future has such promise when we better understand our past and honor those who came before us. This is one of our objectives here at Maple Grove. We understand that for Maple Grove to continue its mission it must consider the value of its past while investing in the future.

We plan to proceed with the completion of a nomination submission for you to present to the New York State Board of Historic Preservation and subsequently to the National Park Service. Nancy Cataldi, who brings a wealth of expertise and historic context to this project, will again assist us in preparing the nomination submission. She will be in contact with you should questions arise about the guidelines we discussed at our meeting last week.

We look forward to being considered for this special status and making new friends for Maple Grove. At any time please feel free to contact me either by phone: 718-544-3600 or by e-mail: Linda.Mayo-Perez@maplegrove.biz.

Many blessings to you this day,


Linda Mayo-Perez
President/CEO