

435

### National Register of Historic Places Registration Form

This form is for use in nominating or requesting determinations for individual properties and districts. See instructions in *How to Complete the National Register of Historic Places Registration Form* (National Register Bulletin 16A). Complete each item by marking "x" in the appropriate box or by entering the information requested. If an item does not apply to the property being documented, enter "N/A" for "not applicable." For functions, architectural classification, materials, and areas of significance, enter only categories and subcategories from the instructions. Place additional entries and narrative items on continuation sheets (NPS Form 10-900a). Use a typewriter, word processor, or computer to complete all items.

#### 1. Name of Property

historic name Covewood Lodge

other names/site number \_\_\_\_\_

#### 2. Location

street & number 120 Covewood Lodge Rd [ ] not for publication

hamlet Big Moose [ ] vicinity

state New York code NY county Herkimer code 043 zip code 13331

#### 3. State/Federal Agency Certification

As the designated authority under the National Historic Preservation Act, as amended, I hereby certify that this [ X ] nomination [ ] request for determination of eligibility meets the documentation standards for registering properties in the National Register of Historic Places and meets the procedural and professional requirements as set forth in 36 CFR Part 60. In my opinion, the property [ X ] meets [ ] does not meet the National Register criteria. I recommend that this property be considered significant [ ] nationally [ ] statewide [ X ] locally. ([ ] see continuation sheet for additional comments.)

*Michelle Carter, SAPP*

*2/24/04*

Signature of certifying official/Title : Commissioner for Historic Preservation

Date

New York State Office of Parks, Recreation & Historic Preservation

In my opinion, the property [ ] meets [ ] does not meet the National Register criteria. ([ ] see continuation sheet for additional comments.)

Signature of certifying official/Title

Date

State or Federal agency and bureau

#### 4. National Park Service Certification

I hereby certify that the property is:

- entered in the National Register [ ] see continuation sheet
- determined eligible for the National Register [ ] see continuation sheet
- determined not eligible for the National Register
- removed from the National Register
- other (explain)

Signature of the Keeper

date of action

*Edson H. Beall* *5/12/04*



**United States Department of the Interior  
National Park Service**

**National Register of Historic Places**

**Continuation Sheet**

**Covewood, Big Moose  
Big Moose, Herkimer County, NY**

Section   7   Page   1  

---

**Description**

Covewood Lodge, a summer camp complex on Big Moose Lake in the west central region of New York's Adirondack Park, consists of a main lodge surrounded by ten historic cottages and related dependencies built primarily during the 1920s. The 50-acre property sits on the south side of Big Moose Lake, about three miles west of NY 28, the main north-south thoroughfare through this sparsely settled area of the Adirondacks. Most of the nominated acreage is undeveloped wilderness interrupted only by a few hiking paths. The clearing on which the complex is located is about one acre in extent, much of which slopes northward down to the lake's edge. A few level areas provide space for small gravel parking lots and grassy recreation fields. Neighboring properties contain a broad range of residential facilities, from small seasonal cabins or cottages to grand, year-round houses, from early twentieth century buildings to early twenty-first century summer retreats.

The focal point of the complex is the main lodge, a large, T-shaped rustic camp building built in 1923. It is built of logs and sheathed with vertically and diagonally laid planks. The main block of the lodge is a rectangular, two and one-half story, gable-roofed building oriented on an east-west axis with the front (north) façade overlooking the lake. It is seven bays wide and four bays deep and features generally symmetrical fenestration throughout. Rectangular window openings (in single, paired or tripartite configurations) contain a variety of windows types, including large windows on the first story with multi-light transoms and variously sized double-hung sash on the upper stories. Built into a hill that slopes gently down to the lake, the front façade of the main block rests on a full, raised stone and concrete foundation, above which rises a two-story verandah supported by massive trees trunks. The second-story of the verandah features four sleeping porches that were originally open on three sides to gain full exposure to fresh air. (During the 1940s, these porches were enclosed with large windows and bark-covered, plank siding.) The first story of this verandah wraps around the west (side) elevation. The primary entrance is centrally located on the front façade and is reached by a divided stone staircase constructed of stone-slab steps and large, random-laid fieldstone retaining walls and balustrades. At the base of the steps, gravel paths lead directly to the water's edge. The secondary entrance, located on the west side, is reached via a single-run staircase, also constructed of stone slabs and random ashlar.

United States Department of the Interior  
National Park Service

National Register of Historic Places

Continuation Sheet

Covewood, Big Moose  
Big Moose, Herkimer County, NY

Section 7 Page 2



Front steps

The first story of the main block contains the main public spaces, including a large sitting room and a large dining room divided by a spacious entrance foyer. Each of these rooms feature massive stone fireplaces, exposed trusses and arches of stripped tree trunks and/or limbs, rustic board and batten walls, and wide plank floors. (The board and batten wall coverings may have been added in the 1940s. Walls originally may have been sheathed with narrow, tongue-in-grove wainscoting, as evinced on several tongue-in-grove covered ceilings.) Door openings are surrounded by split and stripped tree limbs. In the dining room, dozens of original dining chairs built of tree limbs with rattan backs and seats still survive. Many original Adirondack style tables and benches also survive in the sitting room and on the front porch. Of particular note is a table with the word "COVEWOOD" crafted from sticks, and a porch swing constructed of bent tree limbs and branches.

United States Department of the Interior  
National Park Service

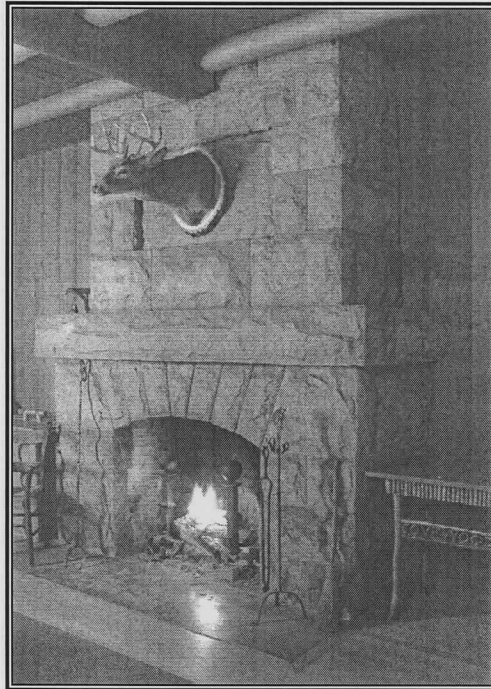
National Register of Historic Places

Continuation Sheet

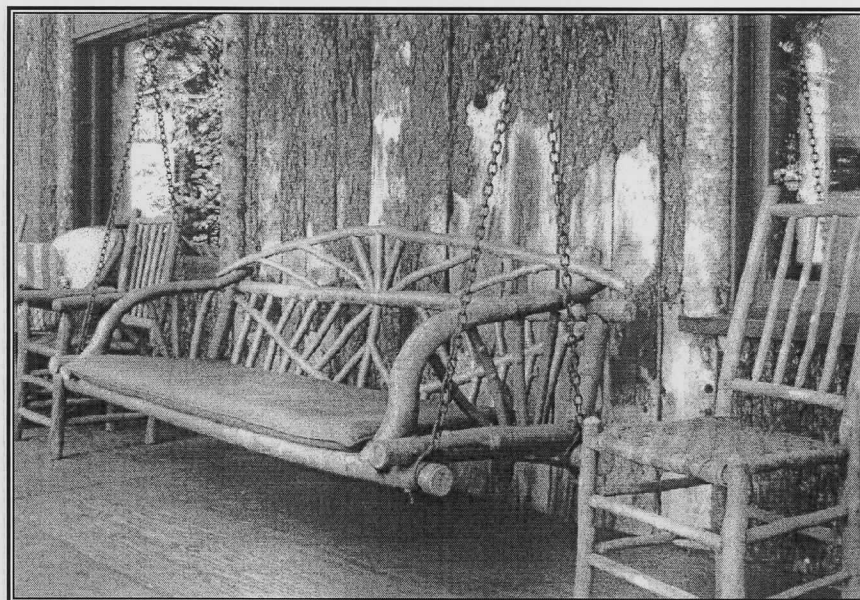
Covewood, Big Moose  
Big Moose, Herkimer County, NY

Section 7 Page 3

---



Fireplace in main parlor



Furniture on front porch

United States Department of the Interior  
National Park Service

National Register of Historic Places

Continuation Sheet

Covewood, Big Moose  
Big Moose, Herkimer County, NY

Section 7 Page 4

---



Staircase, entrance parlor

The entrance foyer contains a wide staircase with newel posts and balustrades of stripped tree trunks and limbs. Access to the eleven guestrooms on the second story is provided via this staircase. (These individual rooms, whose guests formerly shared wash facilities, have been converted into four guest apartments, each with one or two bedrooms, a small kitchenette and/or a modern bathroom.)

**United States Department of the Interior  
National Park Service**

**National Register of Historic Places**

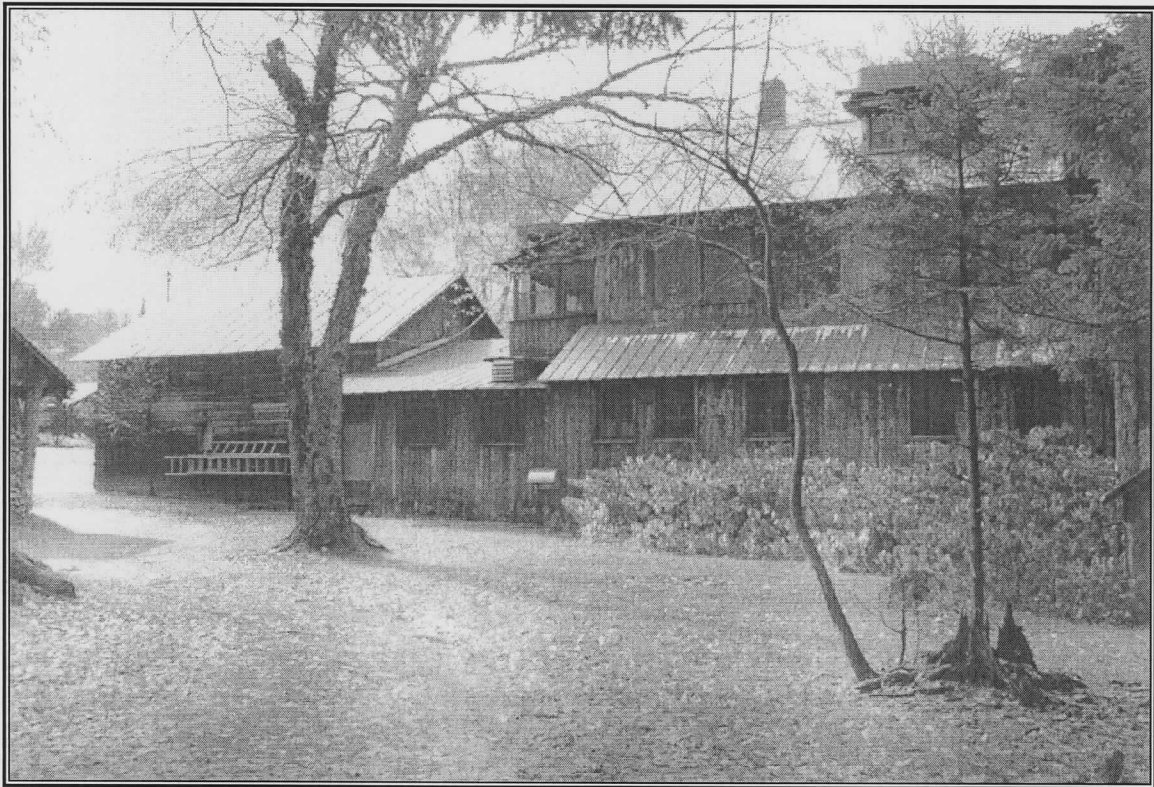
**Continuation Sheet**

**Covewood, Big Moose  
Big Moose, Herkimer County, NY**

**Section   7   Page   5**

---

The basement level of the main block originally contained service and work spaces devoted to the seasonal operation of Covewood. These spaces now contain storage and children's game rooms. In the 1950s, shed-roofed dormers were added on the north and south slopes of the main block's roof in order to provide living space in the attic for the owners. The two-story rear ell contains a large kitchen (once used to prepare all meals for all guests) and a secondary public sitting room. The upper story of the ell contains secondary guestrooms that have been incorporated into the various upstairs apartments.



East side of main lodge with ice house at rear

United States Department of the Interior  
National Park Service

National Register of Historic Places

Continuation Sheet

Covewood, Big Moose  
Big Moose, Herkimer County, NY

Section 7 Page 6

---



Detail of door and window trim and bark-covered siding

Clustered around the main lodge are six cottages and four dependencies that date from the early 1920s to the mid-1930s and one cottage that dates to the late 1940s. Five of the six cottages, including "Cedar," "Spruce," "Birch," "Henry Covey," "Raccoon," and "Earl Covey," are one to one and one-half stories in height and contain two to four bedrooms. All are rustic cottages with vertical, bark-covered plank siding and front verandahs supported by stripped tree trunks with balustrades of stripped tree limbs. The plans of the cottages range from simple rectangles to slightly more elaborate T- or L-shaped configurations. Although the interior fabric of many of these cottages was modified in the 1950s and 1960s, most contain their original, massive stone fireplaces and basic room configurations. (The most obvious changes include the installation of efficiency or full kitchens and modern plumbing.) "Henry Covey" cottage was the first building on the property: built in 1921, the Covey family lived there while constructing the main lodge. "Earl Covey" cottage, built in the late 1940s, is a simple, rectangular cottage nearly identical to the 1920s/30s cottages. The sixth cottage, the "Mary Alden," once a playhouse for the builder's daughter, is now a tiny studio cottage. (It is the only cottages sheathed with rough, board-and-batten siding rather than bark-covered planks.)

United States Department of the Interior  
National Park Service

National Register of Historic Places

Continuation Sheet

Covewood, Big Moose  
Big Moose, Herkimer County, NY

Section 7 Page 7

---



Birch (above; and foreground, below) and Spruce (background, below)



United States Department of the Interior  
National Park Service

National Register of Historic Places

Continuation Sheet

Covewood, Big Moose  
Big Moose, Herkimer County, NY

Section 7 Page 8



Henry Covey (above) and Mary Alden (below)



United States Department of the Interior  
National Park Service

National Register of Historic Places

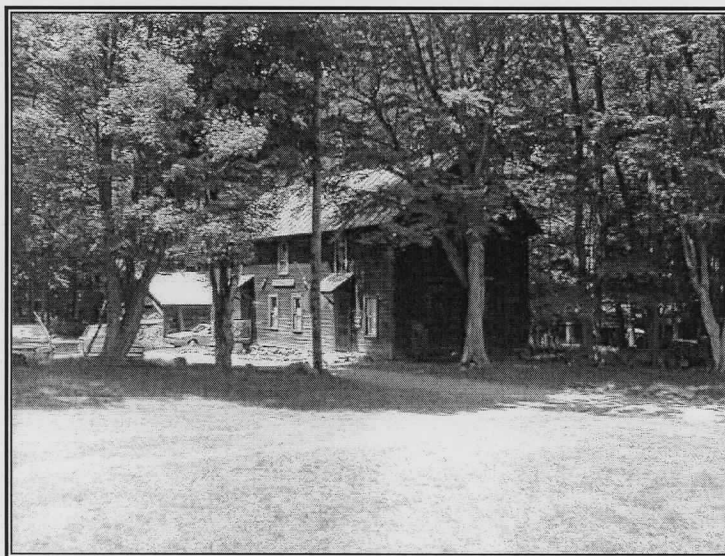
Continuation Sheet

Covewood, Big Moose  
Big Moose, Herkimer County, NY

Section 7 Page 9

---

Dependencies related to the operation of facility include a large, one and one-half story ice house (attached to rear of main lodge by means of a small, one-story hyphen), housekeeping staff quarters, a woodshed, and a gardener's cottage. All were built in the mid-1920s. The housekeeping quarters is a large, two-story, rectangular cottage with vertical, bark-covered plank siding and a standing seam metal gable roof. This building originally housed the laundry facility on the first story and a large sleeping loft for full-time staff on the second story. The first story now contains a smaller, more modern laundromat and several small common areas for summer staff. Although much of the current staff come in daily, the seasonal, residential staff still sleep on the second story of the housekeepers' quarters. The former icehouse serves as storage space, as does the "Hill" cottage. Originally, "Hill" served as quarters for the carpenters and laborers who built the main lodge and cottages. When the complex was complete, "Hill" became the gardener's cottage. The woodshed, located between the ice house and "Raccoon," consists of a rectangular, open-faced, gable-roofed building with a small, shed-roofed wing attached to the west side. It is sheathed with horizontal, bark-covered planks.



Staff/Housekeeping quarters

Two non-contributing buildings are located on the property. "Outlet" cottage, although similar to the other guest cottages, was moved to Covewood in the 1950s. The shop/maintenance building, set far off in the southwest corner of the complex, either dates from the 1950s/60s or is an older, much altered rustic outbuilding with a large, attached machine shed.

**8. Statement of Significance**

**Applicable National Register Criteria**

(Mark "x" in one or more boxes for the criteria qualifying the property for National Register listing.)

- A** Property associated with events that have made a significant contribution to the broad patterns of our history.
- B** Property is associated with the lives of persons significant in our past.
- C** Property embodies the distinctive characteristics of a type, period, or method of construction or represents the work of a master, or possesses high artistic values, or represents a significant and distinguishable entity whose components lack individual distinction.
- D** Property has yielded, or is likely to yield, information important in prehistory or history.

**Criteria Considerations**

(Mark "x" in all boxes that apply.)

- A** owned by a religious institution or used for religious purposes.
- B** removed from its original location
- C** a birthplace or grave
- D** a cemetery
- E** a reconstructed building, object, or structure
- F** a commemorative property
- G** less than 50 years of age or achieved significance within the past 50 years

**Narrative Statement of Significance:** See continuation sheets

**Areas of Significance:**

(Enter categories from instructions)

Recreation

Architecture

**Period of Significance:**

1922 - 1948

**Significant Dates:**

1922; 1923-24; mid 1920s – early 1930s; 1948

**Significant Person:**

NA

**Cultural Affiliation:**

NA

**Architect/Builder:**

Earl Covey

**9. Major Bibliographical References**

Covey, Frances Alden. *The Earl Covey Story*. Hicksville, NY: Exposition Press, Inc. 1964.

**Previous documentation on file (NPS):**

- preliminary determination of individual listing (36 CFR 67) has been requested.
- previously listed in the National Register
- previously determined eligible by the National Register
- designated a National Historic Landmark
- recorded by historic American Building Survey # \_\_\_\_\_
- recorded by Historic American Engineering Record # \_\_\_\_\_

**Primary location of additional data:**

- State Historic Preservation Office
- Other State agency
- Federal Agency
- Local Government
- University
- Other: \_\_\_\_\_

**United States Department of the Interior  
National Park Service**

**National Register of Historic Places**

**Continuation Sheet**

**Covewood, Big Moose  
Big Moose, Herkimer County, NY**

Section 8 Page 1

---

---

**Significance**

Built during the 1920s, Covewood Lodge is architecturally and historically significant as an intact, representative example of a summer cottage complex in the west central region of New York's Adirondack Park. Like scores of other such complexes on dozens of lakes in the Adirondacks, Covewood Lodge on Big Moose Lake consists of a large, rustic main lodge surrounded by small, rustic cottages and service dependencies nestled in the woods near the water's edge. Characteristic of the building type and period, the components of Covewood are constructed of rough, natural materials—such as tree trunks, limbs and branches, bark-covered planks and undressed stones and boulders—gathered on the site. Manipulation of the landscape at these types of summer camps is minimal. With the exception of a front lawn that gently slopes down to the lake, a few small grassy areas, several gravel paths, and a dirt access road with a circular driveway and associated parking, the entire 50-acre extent of Covewood has been left in its natural state: thick stands of mature deciduous and conifer woods, scattered copses, boulder-littered fields and craggy rock outcroppings surround the lake-side cluster of man-made buildings, all of which are designed to complement the adjacent wilderness.

A cursory review of the building type in the Adirondacks reveals that Covewood is a largely intact, representative example of the period in terms of size (of the property, number of buildings, and scale of each building), level of architectural sophistication, and quality of craftsmanship. Similarly, in the context of Big Moose Lake, Covewood is a typical seasonal retreat: local tradition asserts that during the first half of the twentieth century, there were as many as ten such lodges or inns with associated cottages all around the lake. However, few of the other nine complexes survive at all. Those that do survive possess little, if any, integrity: in many cases, the main lodges were lost to fire. In cases where the older cottages survive, many have been significantly altered and/or compromised by modern infill. In other cases, intact clusters or groups of cottages have been sold off to individual owners. Covewood Lodge is the oldest, and only surviving group that continues to operate as a seasonal retreat: the current owners, innkeepers at Covewood since the early 1950s, still rent rooms and cottages to summer guests from all over the United States.

**United States Department of the Interior  
National Park Service**

**National Register of Historic Places**

**Continuation Sheet**

**Covewood, Big Moose  
Big Moose, Herkimer County, NY**

Section 8 Page 2

---

---

Covewood Lodge was built in 1924-25 by Earl Covey, son of Henry Covey, who was a wilderness guide during the 1880s in the Old Forge region of the Adirondack Mountains. Henry built a number of rustic camps in the area, including a summer lodge on Third Lake and "Camp Crag" on the north shore of Big Moose Lake. The Coveys wintered in Old Forge, but spent most of the year at their wilderness retreats. Earl's mother died in 1890 and his brother died in 1892; at age 16, Earl and his father took up permanent residence at Camp Crag, where they engaged in on-going construction projects at the main lodge and associated cottages. Earl also became a wilderness guide for visiting city folk and was soon familiar with every aspect of Big Moose Lake. After marrying Addie Butts in 1895, Earl purchased property on nearby Twitchell Lake and built a rustic lodge that contained two rooms for his family and seven rooms for summer boarders. The Twitchell Lake Inn was receiving guests by 1899; during the next few years, Earl built several small cottages around the main inn. During the first two decades of the twentieth century, Earl remained busy building camps for several friends in the area; when he was not constructing retreats, he was guiding hikers and hunters in the wilderness. Addie was left to run Twitchell Lake Inn; apparently she was also in charge of Camp Crag, as Earl's father, Henry, grew older and less able to handle the chores of a seasonal inn. (Both Camp Crag and the Twitchell Lake Inn are long gone.)

In 1921, Earl purchased roughly 50 acres on the south side of Big Moose Lake (opposite Camp Crag.) A small cottage (later named the "Henry Covey") was built to house the family while Earl and his laborers (who built and lived in a two-story staff lodge) began working on the main lodge. The main lodge was finished around 1923; the first summer boarders were taken in in 1924. Shortly thereafter, five small guest cottages ("Cedar," "Spruce," "Birch," "Raccoon," and "Earl Covey") and three support structures (an icehouse, a large woodshed, and a gardener's cottage) were completed. A rustic playhouse, a small-scale replica of the guest cottages, was built for Earl and Addie's daughter, Mary. Now known as the "Mary Alden," the former playhouse became a honeymoon cottage during the 1930s. Once again, Addie appears to have been left in charge of operating the various business ventures, while Earl pursued his passions for building yet more rustic retreats for clients and conducting tours of the wilderness.

**United States Department of the Interior  
National Park Service**

**National Register of Historic Places**

**Continuation Sheet**

**Covewood, Big Moose  
Big Moose, Herkimer County, NY**

Section 8 Page 3

---

---

In 1938, the Coveys leased the property to a Gladys Bourner, a "regular" at Covewood for many years. The terms of the lease allowed the Coveys to retain summer residence in one of the cottages. In 1951, Covewood was purchased by Major and Mrs. C.V. Bowes. The following year, Earl died. Addie stayed on at Covewood until her death in 1961. The Bowes continue to operate Covewood Lodge as a seasonal summer retreat.

---

10. Geographical Data

---

Acreeage of Property approximately 50 acres

UTM References: Eagle Bay Quad, 1:25,000; Zone 18

1: 511650/4851440

2: 511860/4851580

3: 512130/4851200

4: 511920/4851000

**Verbal Boundary Description:** The boundary of the nominated property coincides with the legal lot lines as delineated on the attached county tax map.

**Boundary Justification:** The boundary coincides with the full extent of land historically associated with the nominated resource.

---

11. Form Prepared By:

---

name/title Nancy L. Todd, Program Analyst

organization Division for Historic Preservation

date February 2003

street & number Peebles Island, Box 189

telephone (518) 237-8643 x 3262

city or town Waterford

state NY zip code 12188

**Additional Documentation**

Submit the following items with the completed form:

**Continuation Sheets**

**Maps**

A **USGS map** (7.5 or 15 minute series) indicating the property's location

A **Sketch map** for historic districts and properties having large acreage or numerous resources.

**Photographs**

Representative **black and white photographs** of the property.

**Property Owner** (Complete this item at the request of the SHPO or FPO)

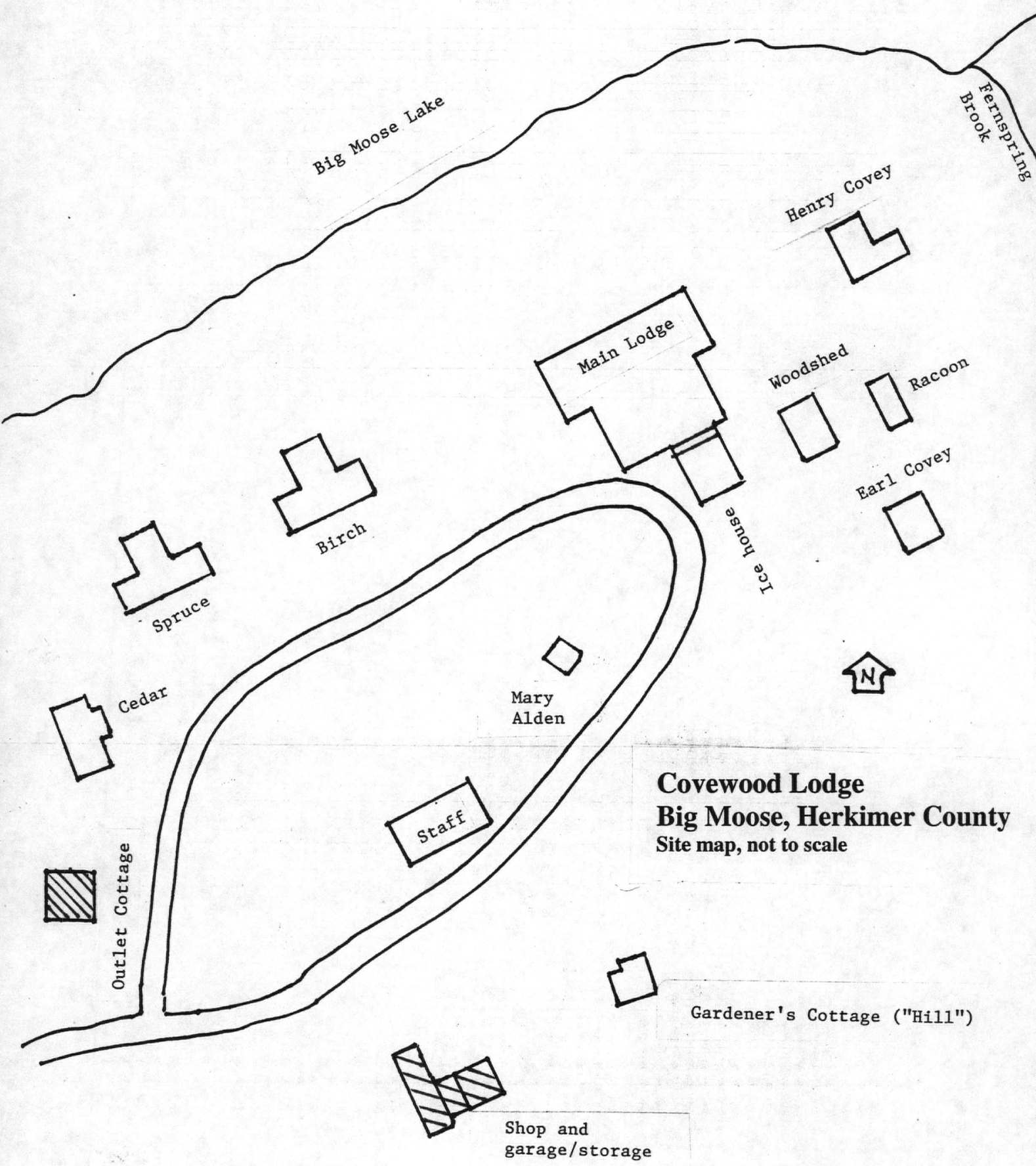
name \_\_\_\_\_

street & number \_\_\_\_\_ telephone \_\_\_\_\_

city or town \_\_\_\_\_ state \_\_\_\_\_ zip code \_\_\_\_\_

---





Big Moose Lake

Fernspring Brook

Henry Covey

Main Lodge

Woodshed

Racoon

Earl Covey

Ice house

Birch

Spruce

Cedar

Mary Alden

Staff

Outlet Cottage

**Covewood Lodge**  
**Big Moose, Herkimer County**  
Site map, not to scale

Gardener's Cottage ("Hill")

Shop and garage/storage



UNITED STATES DEPARTMENT OF THE INTERIOR  
NATIONAL PARK SERVICE

NATIONAL REGISTER OF HISTORIC PLACES  
EVALUATION/RETURN SHEET

REQUESTED ACTION: NOMINATION

PROPERTY NAME: Covewood Lodge

MULTIPLE NAME:

STATE & COUNTY: NEW YORK, Herkimer

DATE RECEIVED: 4/01/04      DATE OF PENDING LIST: 4/21/04  
DATE OF 16TH DAY: 5/06/04      DATE OF 45TH DAY: 5/15/04  
DATE OF WEEKLY LIST:

REFERENCE NUMBER: 04000435

REASONS FOR REVIEW:

APPEAL: N DATA PROBLEM: N LANDSCAPE: N LESS THAN 50 YEARS: N  
OTHER: N PDIL: N PERIOD: N PROGRAM UNAPPROVED: N  
REQUEST: N SAMPLE: N SLR DRAFT: N NATIONAL: N

COMMENT WAIVER: N

ACCEPT       RETURN       REJECT      5/12/04 DATE

ABSTRACT/SUMMARY COMMENTS:

Entered in the  
National Register

RECOM./CRITERIA \_\_\_\_\_

REVIEWER \_\_\_\_\_ DISCIPLINE \_\_\_\_\_

TELEPHONE \_\_\_\_\_ DATE \_\_\_\_\_

DOCUMENTATION see attached comments Y/N see attached SLR Y/N

If a nomination is returned to the nominating authority, the nomination is no longer under consideration by the NPS.





Covewood Lodge

Big moose, Herkimer Co

Photo & Neg: N. Todd, 2003

OPRHP

View: main lodge, front (north)  
and west facades





Covewood Lodge

Big Moose, Herkimer Co.

Photo & neg: n. Todd, 2003

OPRHP

main lodge, looking into main parlor  
from front foyer



A

Covewood Lodge,  
Big Moose, Herkimer Co.

Photo & Neg: ~~Ma~~Todd, 2003  
OPRHP

View: main Lodge, fireplace  
in front foyer



CoveWood Lodge  
Big moose, Herkimer Co.




Photo & Neg: N Todd, 2003  
OPR HP

"Spruce" Cottage



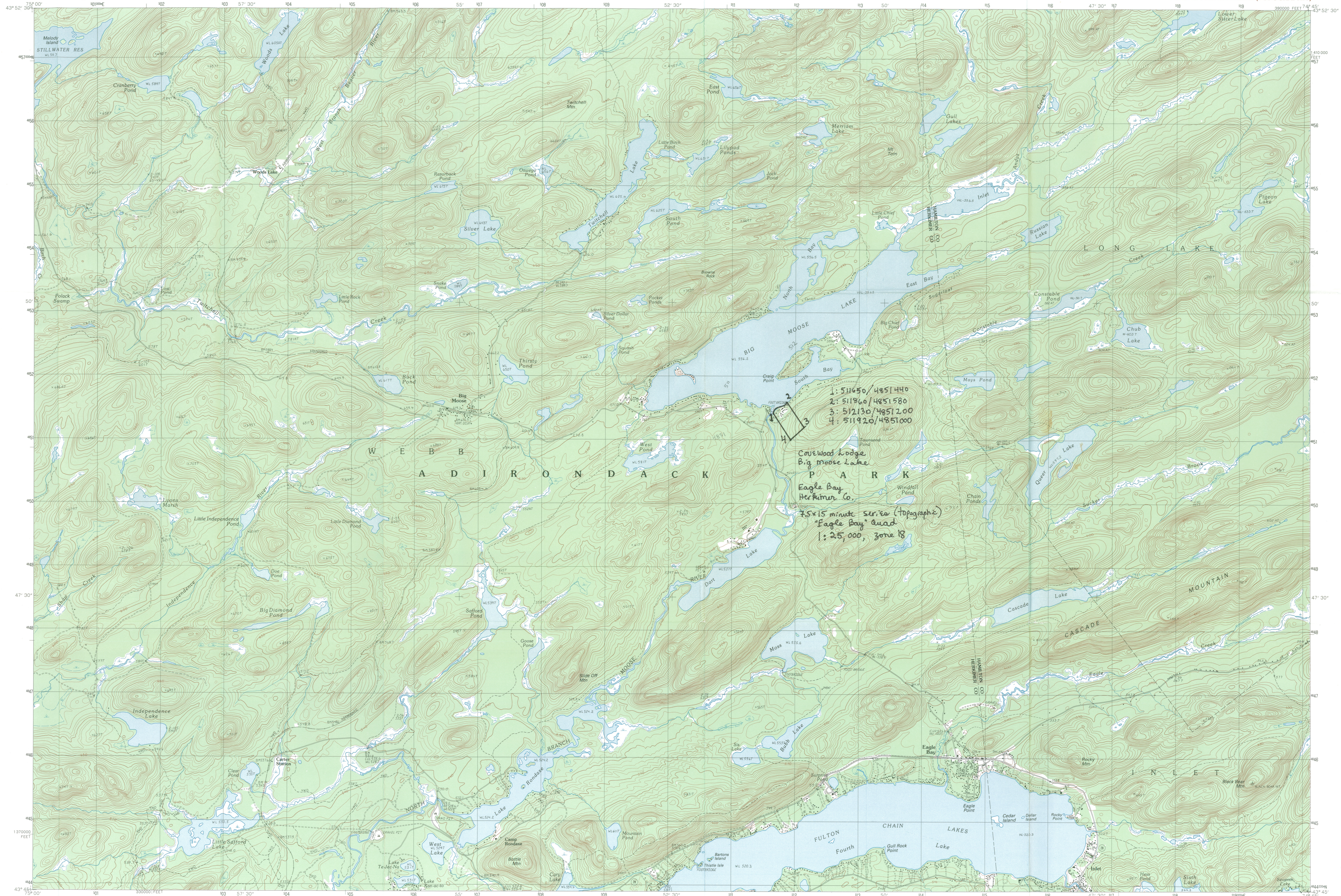


Covewood Lodge

Big moose, Herkimer Co.

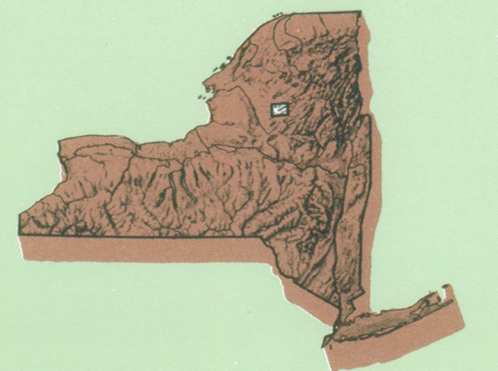
Photo & Neg: n Todd, 2003

main lodge, front porch  
typical rustic, hand-crafted furniture



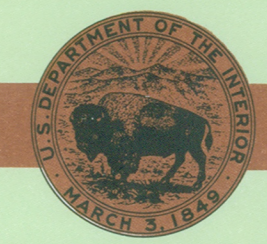
# Eagle Bay NEW YORK

1:25 000-scale metric topographic map



### 7.5 X 15 MINUTE QUADRANGLE SHOWING

- Contours and elevations in meters
- Highways, roads and other manmade structures
- Water features
- Woodland areas
- Geographic names



GEOLOGICAL SURVEY

PROVISIONAL EDITION 1989

PRODUCED BY THE UNITED STATES GEOLOGICAL SURVEY CONTROL BY AERIAL PHOTOGRAPHS TAKEN 1981-82 FIELD CHECKED 1983 MAP EDITED 1989 PROJECTION 1983-METER UNIVERSAL TRANSVERSE MERCATOR GRID 1983-METER UNIVERSAL TRANSVERSE MERCATOR PROJECTION 1983-METER UNIVERSAL TRANSVERSE MERCATOR GRID 10,000-FOOT STATE GRID TICS NEW YORK EAST ZONE 1983 MAGNETIC NORTH DECLINATION 1490 WEST VERTICAL DATUM NATIONAL GEODETIC VERTICAL DATUM OF 1985 HORIZONTAL DATUM 1927 NORTH AMERICAN DATUM To place on the predicted North American Datum of 1983, move the projection lines as shown by dashed corner ticks (2 meters south and 30 meters west) There may be private inholdings within the boundaries of any Federal or State reservations shown on this map. No distinction made between houses, barns, and other buildings

### CONTOUR INTERVAL 6 METERS

CONTROL AND FIELD ESTABLISHED ELEVATIONS SHOWN TO THE NEAREST 0.1 METER OTHER ELEVATIONS SHOWN TO THE NEAREST METER

THIS MAP COMPLES WITH NATIONAL MAP ACCURACY STANDARDS

### CONVERSION TABLE

| Meters | Feet    |
|--------|---------|
| 1      | 3.2808  |
| 2      | 6.5617  |
| 3      | 9.8425  |
| 4      | 13.1234 |
| 5      | 16.4042 |
| 6      | 19.6850 |
| 7      | 22.9659 |
| 8      | 26.2467 |
| 9      | 29.5276 |
| 10     | 32.8084 |

To convert meters to feet multiply by 3.2808  
To convert feet to meters multiply by 0.3048

### ADJOINING MAPS

| 1             | 2                | 3             |
|---------------|------------------|---------------|
| 1 Stillwater  | 2 Beaver River   | 3 Forest Lake |
| 4 Number Four | 5 Reservoir Lake | 6 Thendara    |
| 7 Old Forge   | 8 Wakely Mtn     |               |

ISBN 0-607-42071-5  
9 780607 420715

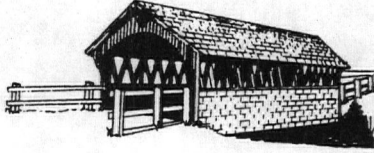
### ROAD LEGEND

- Improved Road
- Unimproved Road
- Trail
- Interstate Route
- U.S. Route
- State Route

PROVISIONAL MAP  
Produced from original manuscript drawings. Information shown as of date of photography.

# TOWN OF WEBB

RICHARD S. RISLEY - Councilman  
Old Forge, New York  
DANFORTH J. RIVET JR. - Councilman  
Old Forge, New York  
MICHAEL A. ROSS - Councilman  
Old Forge, New York  
DAVID P. WINSLOW - Councilman  
Old Forge, New York

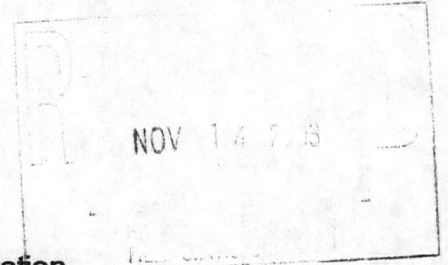


NANCI T. RUSSELL - Town Clerk  
Old Forge, New York  
CASEY C. CROFUT - Highway Superintendent  
Old Forge, New York  
CAROL D. RIVET - Tax Collector  
Old Forge, New York

**ROBERT A. MOORE • SUPERVISOR**

November 11, 2003

Ms. Nancy Todd  
Historic Preservation Field Services Bureau  
New York State Office of Parks, Recreation and Historic Preservation  
Peebles Island, Box 189  
Waterford, New York 12188-0189



Re: Covewood Lodge, Big Moose Lake

Dear Ms. Todd:

On behalf of the Town of Webb, I would like to acknowledge and endorse the consideration of Covewood Lodge for nomination to the National and State Register's of Historic Places.

The Covewood Lodge is rich in history and represents a true Adirondack retreat. Your consideration of this property is an excellent decision.

Sincerely,

A handwritten signature in cursive script that reads "R. A. Moore". The signature is written in black ink and is positioned above the printed name.

Robert A. Moore  
Supervisor

TOWN OF WEBB HISTORIAN  
PEG MASTERS

P. O. Box 914, Old Forge, NY 13420

Phone: 315.369.3281 Fax: 315.369.6022 Email: historian@masterpieces.com

December 2, 2003

DEC 5 2003

DEC - 5 2003

Ms. Ruth Pierpont  
Director of Historic Preservation Field Service Bureau  
Peebles Island, PO Box 189  
Waterford, NY 12188-0189

Dear Ms. Pierpont,

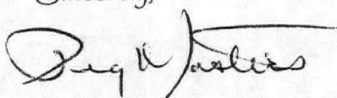
I am pleased to hear that Covewood Lodge, Big Moose, NY in the Town of Webb is under consideration for the list of National and State Registers of Historic Places. Your letter arrived while I was out of town in Australia, but I am delighted to add a few comments of support for the nomination of this property.

As you know, the inclusion of State Registered Historic Places in our corner of the Adirondack Park are sadly underrepresented. This may be due to the harsh climate that aggravates the integrity of wooden structures at an alarming pace. Yet Covewood Lodge has been continually and lovingly maintained by Major and Diane Bowes to an extraordinary standard. Thanks to them, the Lodge stands today as a shining tribute to the indigenous workmanship of our regional craftsmen and represents a historical link to the grand hotel lifestyle of a century ago that is so much a part of our heritage.

Earl Covey, the builder of Covewood Lodge, was a man of exemplary talent and character. He honed his carpentry skills under an apprenticeship with his father Henry Covey - one of the 19th Century pioneer settlers of the Big Moose region. This family stood at the threshold of our modern day history of the Adirondacks as a health and recreation destination. One regional author recalled seeing a photo of Earl Covey taken in 1893 where Earl helped to carry an ailing widow into a wilderness resort - sitting in a rocking chair on top of a stretcher.

Earl understood and loved the natural world of the Adirondacks and his buildings reflect the sensitivity and appreciation he had for this rugged environment. His contributions to his community are legendary and decades after his death, tales of Earl's virtues and hospitality have not been forgotten. Listing Covewood Lodge on the register of historic places will help to perpetuate the legacy of our local craftsmen and share a valued family history with generations to come.

Sincerely,



Peg Masters, Town of Webb Historian

NOV - 7 2003

# STATEMENT OF OWNER SUPPORT

Before an individual nomination proposal will be reviewed or nominated, the owner(s) of record must sign and date the following statement:

WE, C.V. Bowes Jr. Pres. Douglas Bowes (verbal approval)  
Diane F. Bowes Sec.  
Dennis McDade (verbal approval)  
(print or type owners names)

are the owners of the property at

Covewood Lodge, Big Moose, Herkimer County, NY

We support its nomination to the State and National Registers of Historic Places.

Sign and date below, and provide legal mailing address(s) of owner(s)

Diane F. Bowes - Secty - Big Moose Lake  
Eagle Bay, NY, 13331

C.V. Bowes Jr. Pres. - Big Moose Lake  
Eagle Bay  
NY 13331

Dennis McDade (Treas)  
45 Old Mill Rd  
Greenwich, CT  
06831

Douglas Bowes  
2505 Tarpon Rd  
Naples, FL  
34102