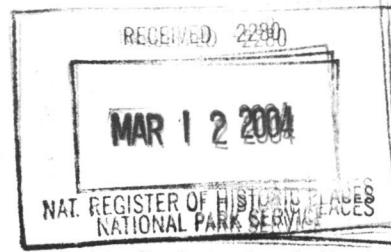


United States Department of the Interior
National Park Service



National Register of Historic Places
Registration Form

This form is for use in nominating or requesting determinations for individual properties and districts. See instructions in *How to Complete the National Register of Historic Places Registration Form* (National Register Bulletin 16A). Complete each item by marking "x" in the appropriate box or by entering the information requested. If an item does not apply to the property being documented, enter "N/A" for "not applicable." For functions, architectural classification, materials, and areas of significance, enter only categories and subcategories from the instructions. Place additional entries and narrative items on continuation sheets (NPS Form 10-900a). Use a typewriter, word processor, or computer, to complete all items.

1. Name of Property

historic name Valley Paper Mill Chimney and Site

other name/site number n/a

2. Location

street & town NY 143 at CR 111 not for publication

city or town Alcove vicinity

state New York code NY county Albany code 001 zip code 12046

3. State/Federal Agency Certification

As the designated authority under the National Historic Preservation Act, as amended, I hereby certify that this nomination request for determination of eligibility meets the documentation standards for registering properties in the National Register of Historic Places and meets the procedural and professional requirements set forth in 36 CFR Part 60. In my opinion, the property meets does not meet the National Register criteria. I recommend that this property be considered significant nationally statewide locally. (See continuation sheet for additional comments.)

Mike Costa, 5/10/15/04
Signature of certifying official/Title _____ Date _____
Commissioner, NY State Office of Parks, Recreation & Historic Preservation
New York State Historic Preservation Officer

State of Federal agency and bureau _____

In my opinion, the property meets does not meet the National Register criteria. (See continuation sheet for additional comments.)

Signature of certifying official/Title _____ Date _____

State or Federal agency and bureau _____

4. National Park Service Certification

I hereby certify that the property is:

- entered in the National Register.
 See continuation sheet.
- determined eligible for the National Register
 See continuation sheet.
- determined not eligible for the National Register.
- removed from the National Register.
- other, (explain:) _____

for
Signature of the Keeper _____ Date of Action 4/21/04
Edson H. Beall

Valley Paper Mill Chimney and Site
Name of Property

Albany, New York
County and State

5. Classification

Ownership of Property

(check as many boxes as apply)

- public-local
- private
- public-State
- public-Federal

Category of Property

(check only one box)

- district
- building(s)
- site
- structure
- object

Number of Resources within Property

(Do not include previously listed resources in the count.)

Contributing	Noncontributing	
_____	_____	buildings
1	_____	sites
1	_____	structures
_____	_____	objects
2	0	Total

Name of related multiple property listing

(Enter "N/A" if property is not part of a multiple property listing.)

n/a

Number of contributing resources previously listed in the National Register

n/a

6. Function or Use

Historic Function

(Enter categories from instructions)

Industry/Processing/Extraction/ Manufacturing Facility

Current Function

(Enter categories from instructions)

Vacant/Not in use

7. Description

Architectural Classification

(Enter categories from instructions)

n/a

Materials

(Enter categories from instructions)

foundation Stone
walls Brick

roof

other

Narrative Description

(Describe the historic and current condition of the property on one or more continuation sheets.)

*The Valley Paper Mill Chimney and Site
Coeymans, Albany County*

**NATIONAL REGISTER OF HISTORIC PLACES
CONTINUATION SHEET**

Section number 7 Page 1

The Valley Paper Mill Chimney and Site (1844-1891) is located in the southwest portion of the town of Coeymans in what was historically known as the hamlet of Stevensville.¹ The Valley Paper Mill site and its surviving chimney are prominently situated on the southeast corner of the intersection of New York State Route 143 and Albany County Route 111. The site and structure occupy a less than one-acre parcel. The nominated property is bounded on the south by the Hannacroix Creek and Route 143, on the west by CR 111, on the north and east by open land and scattered homes. The nominated property includes the surviving 1844 Valley Paper Mill chimney (one contributing structure) and the site of the former straw pulp paper mill (one contributing site).

Contributing structure: 1

Contributing site: 1

The Valley Paper Mill chimney is a rectangular tapered brick chimney, which is erected atop a coursed stone foundation. The structure measures 9.5 by 9.5 feet at its base and rises 110 from its base to its terminus. A corbeled brick frieze ornaments the top of the chimney, which supports a square stage pierced on each of its four faces by two Gothic arched openings. A second brick corbel course separates the top of the stage from a simple cornice. A vent (draft) hole pierced the chimney at its base.

The site of the Valley Paper Mill is an open area of less than one acre. Centered on the site, just north of the chimney is a raised concrete slab. After the mill was destroyed by fire in 1891 the site was leveled and filled. At some point after the site settled a creamery was built on a portion of the mill site. This building was later used as a tavern. It was demolished in the mid-twentieth century. This new construction was built on a thick concrete slab placed over the site of the original mill and only occupies a small portion of the original mill site. A significant portion of the mill site remains undisturbed from the post fire era. As such, the site has the potential to yield a significant amount of information about the construction of the mill, its hydro engineering, the layout and operation of the factory, and the daily lives of its workers.

Albany County presently owns the site. The ownership of the it recently passed from Albany County to the Open Space Institute who is working with the Alcove Preservation Association to use the space as a passive and park with historical interpretation of the site. It is also planning to incorporate the park into an existing network protected open space in the community.

¹ The hamlet of Stevensville included smaller communities. These included the enclave if Indian Fields, which was obliterated and inundated when the City of Albany constructed the Alcove Reservoir. The other community is that if Alcove. The historic core of Alcove was previously listed to the NY State and National Registers of Historic Places in 1980.

8. Significance

Applicable National Register Criteria

(Mark "x" in one or more boxes for the criteria qualifying the property for National Register listing.)

- A** Property is associated with events that have made a significant contribution to the broad patterns of our history.
- B** Property is associated with the lives of persons significant in our past.
- C** Property embodies the distinctive characteristics of a type, period, or method of construction or represents the work of a master, or possesses high artistic values, or represents a significant and distinguishable entity whose components lack individual distinction.
- D** Property has yielded, or is likely to yield, information important in prehistory or history.

Criteria Considerations

(Mark "x" in all the boxes that apply.)

Property is:

- A** owned by a religious institution or used for religious purposes.
- B** removed from its original location.
- C** a birthplace or grave.
- D** a cemetery.
- E** a reconstructed building, object, or structure.
- F** a commemorative property.
- G** less than 50 years of age or achieved significance within the past 50 years.

Narrative Statement of Significance

(Explain the significance of the property on one or more continuation sheets.)

Areas of Significance

(enter categories from instructions)

Industry

Period of Significance

1844-1891

Significant Dates

1844, 1891

Significant Persons

(Complete if Criterion B is marked above)

n/a

Cultural Affiliation

n/a

Architect/Builder

n/a

9. Major Bibliographical References

Bibliography

(Cite the books, articles, and other sources used in preparing this form on one or more continuation sheets.)

Previous documentation on file (NPS):

- preliminary determination of individual listing (36 CFR 67) has been requested
- previously listed in the National Register
- previously determined eligible by the National Register
- designated a National Historic Landmark
- recorded by Historic American Buildings Survey # _____
- recorded by Historic American Engineering Record # _____

Primary location of additional data:

- State Historic Preservation Office
- Other State agency
- Federal agency
- Local government
- University
- Other Name of repository: _____

*The Valley Paper Mill Chimney and Site
Coeymans, Albany County*

**NATIONAL REGISTER OF HISTORIC PLACES
CONTINUATION SHEET**

Section number 8 Page 1

The Valley Paper Mill Chimney and Site is historically significant for its association with the more than four centuries of continuous industrial development and heritage in the town of Coeymans, Albany County. The surviving Gothic Revival inspired chimney serves as a visual landmark in the community and is an identifiable symbol of the hamlet of Alcove. It is one of only a few intact features associated with the numerous mills and industries that once lined the town's two powerful watercourses, the Hannacroix and the Coeymans Creeks. The site of the Valley Paper Mill remains largely undisturbed since fire destroyed the industrial complex in 1891. For more than a century little activity has occurred on the site. As a result, the site has the potential to yield information about the straw paper industry, the evolution of this industry's building typology, and the technology associated with this important local industry.

Alcove is one of several small hamlets that evolved in the town of Coeymans. The town, which was incorporated in 1791, was settled in 1673 with the arrival of Barent Pietersz Koijemans (the Dutch spelling of Coeymans). Coeymans had arrived in New Amsterdam (New York), from Texel, Holland in 1639. In that same year he was indentured to the Patroon, Killian Van Rensselaer, to serve as an apprentice in his Rensselaerwick (Albany) mills. After more than 30 years working for and leasing land and mills from the Patroon, Coeymans purchased a vast land tract along the Hudson River south of the Patroon's land.

At the time of Coeymans arrival on his patent in 1672 records show that Cryn Cornelissen and Hans Jansen were already operating a mill on the Coeymans Creek. This earliest industrial venture is believed to predate Coeymans arrival by 20 years and represents the initial phase of the town's industrial growth. After his arrival Coeymans quickly established a number of mills along the mouth of a creek within his new patent² These included a large grist and sawmill complex. In later years the complex would be augmented by the construction of another sawmill, gristmill, and plastermill. During the late seventeenth and early eighteenth centuries Coeymans and his family would amass a sizable and lucrative milling operation in addition to a general trade business along the Hudson River.

The upland western portion of Coeymans developed slowly during the seventeenth and eighteenth centuries. Development centered on the Hannacroix Creek, which provided an excellent source of hydropower. Along the creek three hamlets emerged. These settlements were Stevensville, Coeymans Hollow, and Aquetuck. All three communities contained a number of early mills. The first industrial development in Stevensville occurred with the construction of a gristmill on the Hannacroix by Casperus Ackerman in the early 1770s. In 1810 Spafford's Gazetteer of New York records the town as having 10 gristmills, 9 sawmills and one carding 7 fulling mill. By 1824 Spafford records 4 gristmills, 12 sawmills, 3 fulling mills, 2 carding machines, and two asheries in the town.

². The creek is historically known as the Onesquethaw. The name of the creek officially changes from Onesquethaw to Coeymans as it passes from the town of Bethlehem into the town of Coeymans in honor of the community's progenitor.

*The Valley Paper Mill Chimney and Site
Coeymans, Albany County*

**NATIONAL REGISTER OF HISTORIC PLACES
CONTINUATION SHEET**

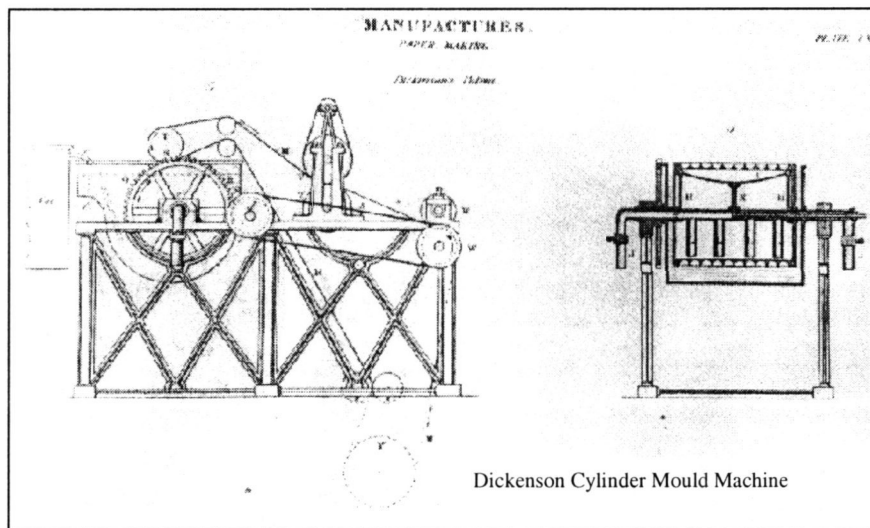
Section number 8 Page 2

In 1854 the number of industrial sites in the town had coalesced to include two paper mills, two gristmills and three saw mills. By the close of the nineteenth century virtually none of the small enterprises that had evolved in the community over the previous two centuries survived.

In the late nineteenth and early twentieth century the industrial development of the town shifted from small, localized industrial sites to larger centralized commercial ventures. Brick making at several yards along the banks of the Hudson River and an extensive ice harvesting and transport business formed the industrial core of the town.³ An iron foundry in the village of Ravena, several active quarries in the western portion of the town, and the burgeoning New York Central rail yard⁴ also developed during this era. In addition to these long-term ventures, an apple processing plant, the Twentieth Century Aircraft Corporation (a small aircraft manufacturing company), and the Knaust (later Frangella Brothers) mushroom canning operations were sited in the town.

The last phase of the town's industrial development occurred in 1962 with the arrival of the Atlantic Cement Company. This company established one of the nation's largest cement manufacturing facilities at the time in the community. Still in operation today under the ownership of the multinational corporation Lafarge, the cement plant along with the Powell & Minnock brickyard remain the last operating industrial facilities in the community.

The history of the Valley Paper Mill begins in the middle phase of the town's industrial development. In 1844 Ephraim Andrews constructed a small cloth dressing and carding mill on the Hannacroix at Alcove. In 1848 John E. Andrews converted the mills for the production of straw wrapping paper. Two overshot wheels powered the mill. The



dam and impound were located west of the mill. In 1854 Andrews went into partnership with W. S. Briggs. At that time the mill was converted from waterpower to steam with the introduction

³ These yards included the Powell & Minnock, Sutton & Suderly, Hardwick & Walsh, Roah Hook, Zeigler & Zeigler, Sutton & Sinsabaugh, and Adamo's brick yards.

⁴ The West Shore Railroad leased track from The New York Central Railroad in 1881 and began the development of a significant freight rail yard in Coeymans (Ravena). The yard was relocated to Selkirk, Albany County in the 1920s.

*The Valley Paper Mill Chimney and Site
Coeymans, Albany County*

**NATIONAL REGISTER OF HISTORIC PLACES
CONTINUATION SHEET**

Section number 8 Page 3

of a boiler, chimney, steam engine and cylinder paper machine. During this era there were two types of machines available for the commercial production of paper in continuous sheets. The first of these machines was known as a Fourdrinier. This machine was first developed and patented by Frenchman, Nicholas-Louis Roberts in 1799. An English patent for the machine was granted to John Gamble and French brothers, Henry and Sealy Fourdrinier in 1801. In 1827 Henry Barclay, purchased the first Fourdrinier to arrive in America for his paper mill in Saugerties, New York. The second type of paper machine to be developed during this era was known and a Cylinder Mould Machine. Unlike the Fourdrinier, which placed wet pulp between two rollers on a continuous web, the cylinder machine consisted of a perforated drum (cylinder) which was partly immersed in the pulp vat. The drum was attached to a vacuum pump, which caused pulp fibers to adhere to it as it passed through he vat. A continuous belt of felt passed along the cylinder and removed the wet thin sheet of pulp. Patents for the cylinder machine were granted in 1807 and a second for a duplex version that could produce duplex paper from two cylinders created the forerunner of (card) board making.

It was a Cylinder Mould machine that was installed in the Valley Mill in Coeymans. To augment the process a pulp mill would also have been in operation. The pulp for the mill would have been derived primarily from straw. The straw was obtained from the by-products of threshing cereal grains. Farmers would bring bailed or loose straw (generally rye) to the mill where it was weighed and the farmer paid the prevailing wage for the raw materials. The straw would be brought to the pulping operation in the mill where it was mixed with water and most likely lime (an alkali) and heated in vats. Once "cooked" the material was allowed season for several hours. It was then processed through a machine that would "beat the material to establish the necessary fibers for the production process. It is also during this phase that the pulp is washed of any remaining alkali residue from the pulping process. John Andrews, the owner of the Valley Paper Mill, was issued a patent on a stock washing machine that no doubt was in use at the Alcove mill.

It is most likely that the pulping operation was powered by the original water wheel while the cylinder press was operated by steam. Briggs ultimately purchased the mill. In 1871 W.S. Briggs and his sons, Newton S., Ralph B., and Amos D. acquired the mill under the name of W.S. Briggs and Sons. In 1874 the business was sold to Amos. The mill was improved in 1883 with the addition of a new steam engine and water wheel. From this period there are two descriptions of the mills power plant. The first describes the mill has having power rating that included 125 horse power from a steam engine with an additional 150 horse power being produced by hydro power. Another account cites that the plant derives 90-horse power from one steam engine and a total of 130-horse power being derived from four water (turbines) wheels.⁵ This would give the mill an overall power rating of 220-horse power, which clearly indicates that the mill was a significant operation. By 1885 the Valley paper Mill had the capacity to produce one-half ton of straw paper at any one time. The mill was operating with four pulp engines and

⁵ Two water wheels are rated at 15, one at 30 and one at 80-horse power.

*The Valley Paper Mill Chimney and Site
Coeymans, Albany County*

**NATIONAL REGISTER OF HISTORIC PLACES
CONTINUATION SHEET**

Section number 8 Page 4

two cylinder machines. It could achieve a capacity of a reported 3.5 tons in 24-hours of straw wrapping paper.

During this same period two other paper mills were in operation along the banks of the Hannacroix Creek. These included the Croswell Paper Mill, just outside the town of Coeymans in the town of New Baltimore. This mill also operated using a combination of steam and hydropower. It produced straw hanging paper and was rated as having an output of one ton in 24-hours. The Croswell Mill ceased operation in 1897. Only remnants of its hydropower system remain today. The third mill was the Ravine Paper mill in the hamlet of Coeymans. Built as a paper mill the facility operated from 1832 until the 1890s when it closed. It appears to have only operated sporadically during its later years. Its production capacity reached 2.5 tons in 24 hours. The Ravine mill was demolished in the early twentieth century and its foundation reused for the construction of a home.

From the turning of the first water wheel, erected in the mid seventeenth century along the Onesquethaw (Coeymans) Creek by Cryn Cornelissen and Hans Jansen to the current annual production of two-million tons of cement by Lafarge America, the town of Coeymans boasts more than three and one-half centuries of continuous industrial history. During this extraordinary period of time scores of water and steam powered industrial facilities have been constructed in the community only to be obliterated from the landscape by changing technology and economics. Today, within the town of Coeymans only a few extant remnants exist of the extensive nineteenth century milling and industrial operations that once populated the creek banks of the community. Retaining walls, rock cuts, sluice ways, partial foundations, and the rubble from old dams litter the banks of both the Hannacroix and Coeymans Creeks. However, none of these remains have engendered the iconographic quality or the fierce community connection that has been associated with the Valley Paper Mill chimney and the hamlet of Alcove (Stevensville). For more than a century this monolithic tower has stood sentry to this small hamlet marking its location in the community.

*The Valley Paper Mill Chimney and Site
Coeymans, Albany County*

**NATIONAL REGISTER OF HISTORIC PLACES
CONTINUATION SHEET**

Section number 9 Page 1

Bibliography

Beers, S.N. & D.G., New Topographical Atlas of the Counties of Albany & Schenectady, New York. Philadelphia: Stone & Stewart. 1866. Reprint ed. Churchville, NY: Martin Wehle. 1975.

Combination Atlas Map of Albany County. Philadelphia: Everts, Ensign & Everts, 1876.

French, J.H. Gazetteer of the State of New York. Syracuse, New York: R.P. Smith. 1860.

Friday, Chuck. "Field of Reams, The Hannacroix Creek Paper Mills." Unpublished manuscript. Ravena, New York. 2003.

Giddings, Edward D. Coeymans Past and Present. Ravena, N.Y.: Coeymans Tri-Centennial Committee, 1973.

Howell & Tennet. History of the County of Albany. W.W. Munsell & Co. New York. NY. 1886.

Parker, Amasa J., ed. Landmarks of Albany County. Syracuse, N.Y.: Mason & Co. Publishers, 1897.

Spafford, Horation Gates. A Gazetteer of the State of New York. Syracuse, New York: R.P. Smith. 1813.

Valley Paper Mill Chimney and Site
Name of Property

Albany, New York
County and State

10. Geographical Data

Acreage of Property Less than one acre

UTM References

(Place additional boundaries of the property on a continuation sheet.)

1 18 588501 4702680

Zone Easting Northing

3

Zone Easting Northing

2

Zone Easting Northing

4

Zone Easting Northing

See continuation sheet

Verbal Boundary Description

(Describe the boundaries of the property on a continuation sheet.)

Boundary Justification

(Explain why the boundaries were selected on a continuation sheet.)

11. Form Prepared By

name/title John A. Bonafide, Historic Preservation Information Systems Manager

organization NYSOPRHP date September 2003

street & number PO Box 189 telephone 518-237-8643

city or town Waterford state NY zip code 12188-0189

Additional Documentation

Submit the following items with the completed form:

Continuation Sheets

Maps

A **USGS map** (7.5 or 15 minute series) indicating the property's location.

A **Sketch map** for historic districts and properties having large acreage or numerous resources.

Photographs

Representative black and **white photographs** of the property.

Additional items

(Check with the SHPO or FPO for any additional items)

Property Owner

(Complete this item at the request of SHPO or FPO.)

name/title Town of Coeymans

street & number _____ telephone _____

city or town _____ state NY zip code _____

Paperwork Reduction Act Statement: This information is being collected for applications to the National Register of Historic Places to nominate properties for listing or determine eligibility for listing, to list properties, and to amend existing listings. Response to this request is required to obtain a benefit in accordance with the National Historic Preservation Act, as amended (16 U.S.C. 470 *et seq.*).

Estimated Burden Statement: Public reporting burden for this form is estimated to average 18.1 hours per response including time for reviewing instructions, gathering and maintaining data, and completing and reviewing the form. Direct comments regarding this burden estimate or any aspect of this form to the Chief, Administrative Services Division, National Park Service, P.O. Box 37127, Washington, DC 20013-7127; and the Office of Management and Budget, Paperwork Reductions Projects (1024-0018), Washington, DC 20503.

*The Valley Paper Mill Chimney and Site
Coeymans, Albany County*

**NATIONAL REGISTER OF HISTORIC PLACES
CONTINUATION SHEET**

Section number 10 Page 1

Verbal Boundary Description

The boundary for the nominated property is shown as the heavy black outline on the accompanying map entitled The Valley Paper Mill Chimney and Site, Coeymans, Albany County, New York.

Boundary Justification

The boundary for the nomination has been drawn to coincide with the current legal lot for the property.

*The Valley Paper Mill Chimney and Site
Coeymans, Albany County*

**NATIONAL REGISTER OF HISTORIC PLACES
CONTINUATION SHEET**

Section number 11 Page 1

Research Provided by:

Chuck Friday
Ravena, New York
(see bibliography)

*The Valley Paper Mill Chimney and Site
Coeymans, Albany County*

**NATIONAL REGISTER OF HISTORIC PLACES
CONTINUATION SHEET**

Section number Photographs

**The Valley Paper Mill Chimney and Site
Coeymans, Albany County**

Photo by: John A. Bonafide, 2003

NYS OPRHP, Waterford, NY

Neg. at: NYS OPRHP, Waterford, NY

Photographs

1. Chimney, view northwest
2. Mill site, view north

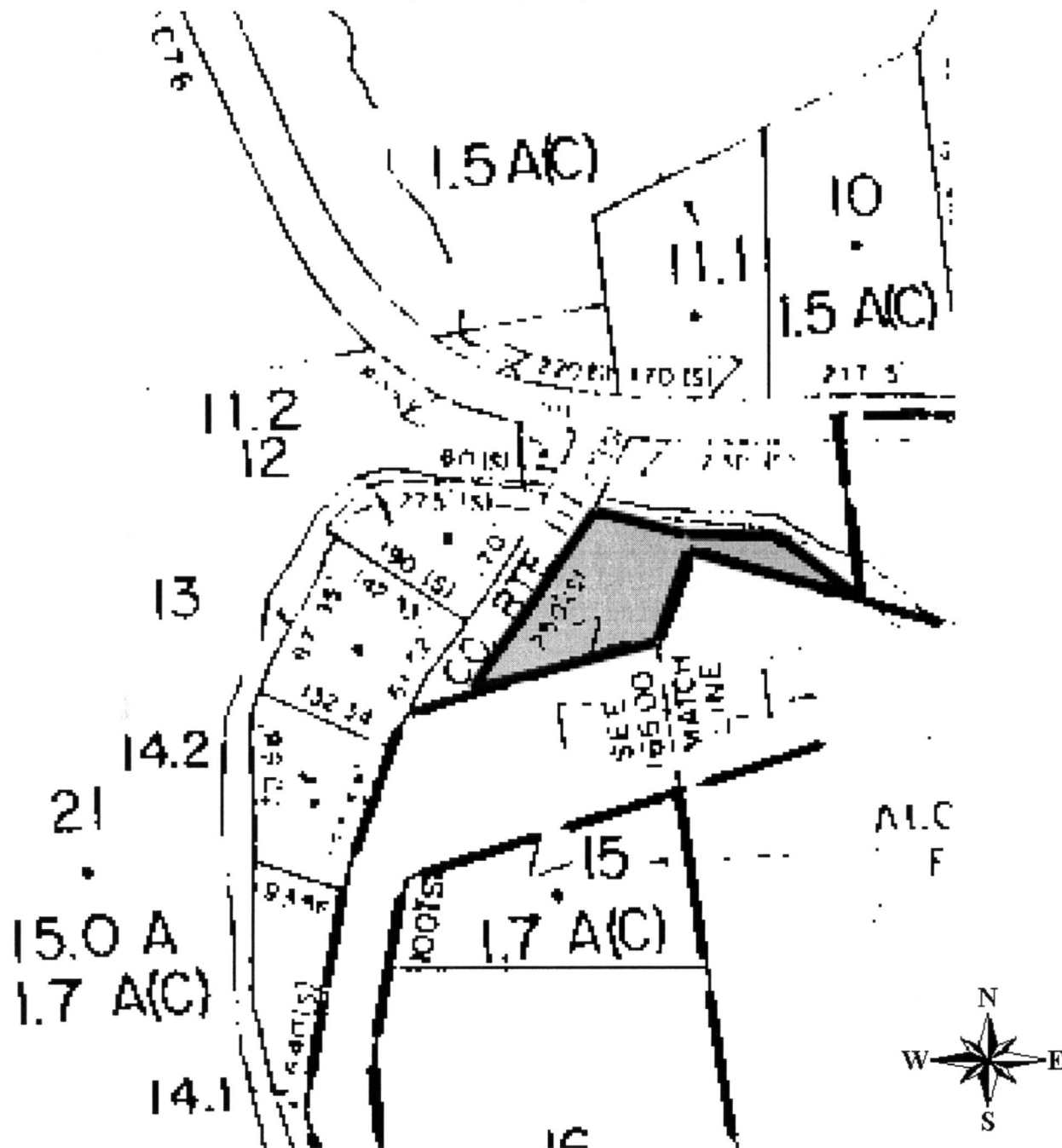
The Valley Paper Mill Chimney and Site
Coeymans, Albany County

NATIONAL REGISTER OF HISTORIC PLACES
CONTINUATION SHEET

Section number Photo

The Valley Paper Mill Chimney and Site

Coeymans, Albany County, New York



Scale 1 inch equals XXX feet
boundary —

**NATIONAL REGISTER OF HISTORIC PLACES
CONTINUATION SHEET**

The Valley Paper Mill Chimney and Site
Coyemans, Albany County

Section number Photo

The Valley Paper Mill Chimney and Site
Coyemans, Albany County, New York
Historic Photograph, ca. 1890



*The Valley Paper Mill Chimney and Site
Coeymans, Albany County*

**NATIONAL REGISTER OF HISTORIC PLACES
CONTINUATION SHEET**

Section number Photo

The Valley Paper Mill Chimney and Site

Coeymans, Albany County, New York
Historic Photograph, ca. 1891, Post Fire



UNITED STATES DEPARTMENT OF THE INTERIOR
NATIONAL PARK SERVICE

NATIONAL REGISTER OF HISTORIC PLACES
EVALUATION/RETURN SHEET

REQUESTED ACTION: NOMINATION

PROPERTY NAME: Valley Paper Mill Chimney and Site

MULTIPLE NAME:

STATE & COUNTY: NEW YORK, Albany

DATE RECEIVED: 3/12/04 DATE OF PENDING LIST: 3/31/04
DATE OF 16TH DAY: 4/15/04 DATE OF 45TH DAY: 4/25/04
DATE OF WEEKLY LIST:

REFERENCE NUMBER: 04000350

REASONS FOR REVIEW:

APPEAL: N DATA PROBLEM: N LANDSCAPE: N LESS THAN 50 YEARS: N
OTHER: N PDIL: N PERIOD: N PROGRAM UNAPPROVED: N
REQUEST: N SAMPLE: N SLR DRAFT: N NATIONAL: N

COMMENT WAIVER: N

ACCEPT RETURN REJECT 4/21/04 DATE

ABSTRACT/SUMMARY COMMENTS:

**Entered in the
National Register**

RECOM./CRITERIA _____

REVIEWER _____ DISCIPLINE _____

TELEPHONE _____ DATE _____

DOCUMENTATION see attached comments Y/N see attached SLR Y/N

If a nomination is returned to the nominating authority, the nomination is no longer under consideration by the NPS.



VALLEY Paper Mill Chimney and Site
Coeymans, Albany Co.

Photo 1

W



Valley Paper Mill Chimney & Site

Coymans, Albany Co.

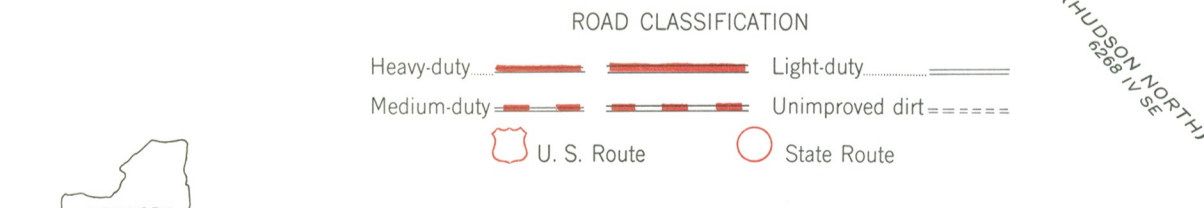
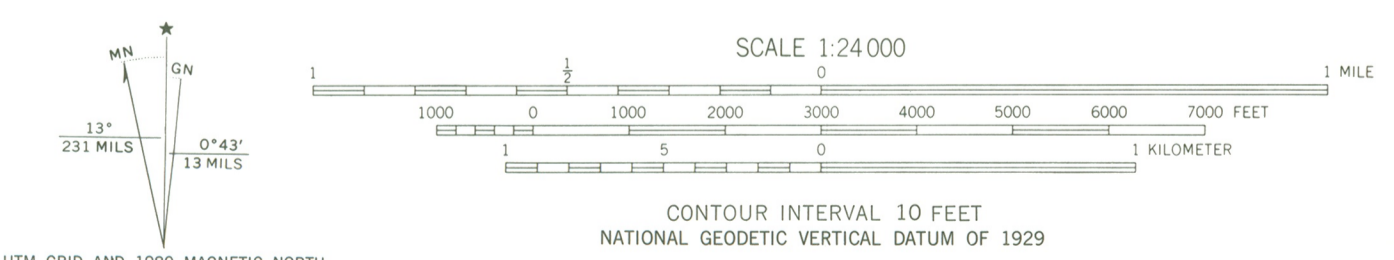
Photo 2

3



VALLEY FARM Mill Chimney and S.W. Coeymans, Albany County Zone 18 ALCOVE QUAD 5885D1 470268D

Mapped, edited, and published by the Geological Survey
Control by USGS, USC&GS, and USCE, and New York State Geodetic Survey
Topography from aerial photographs by stereophotogrammetric methods. Aerial photographs taken 1952. Field check 1953
Polyconic projection
10,000-foot grid based on New York coordinate system, east zone
1000-meter Universal Transverse Mercator grid ticks, zone 18, shown in blue. 1927 North American Datum
To place on the predicted North American Datum 1983 move the projection lines 5 meters south and 35 meters west as shown by dashed corner ticks
There may be private inholdings within the boundaries of the National or State reservations shown on this map



ALCOVE, N.Y.
N 4222.5 — W 7352.5 / 7.5

THIS MAP COMPLIES WITH NATIONAL MAP ACCURACY STANDARDS
FOR SALE BY U.S. GEOLOGICAL SURVEY
DENVER, COLORADO 80225, OR RESTON, VIRGINIA 22092
A FOLDER DESCRIBING TOPOGRAPHIC MAPS AND SYMBOLS IS AVAILABLE ON REQUEST

(FREEHOLD)
1988

(W 7352.5)
1988

OCT 27 2003



October 24, 2003

Mr. John Bonafide
Information Systems Manager
NYS Parks, Recreation &
Historic Preservation
PO Box 189
Waterford, NY 12188-0189

Dear Mr. Bonafide:

The destruction of Alcove Mill stonewalls during highway reconstruction, and the proposed burning of the Albany Water Board Barns located on Water Board Road, both within the "Alcove Historic District", were a catalyst in the 1994 formation of Alcove Preservation Association. We realized the need for a combined voice to preserve Alcove's history and retain the character of a mid-1800's crossroads community centered around an industrial mill system or it would be lost.

Of primary concern was the Valley Paper Mill Chimney. Realizing its unique design, age, and almost pristine condition caused us to form a committee in 1995 to investigate avenues that would preserve the chimney and make more attractive the corner lot at SR 143 and CR 111. After many meetings, contacts, and information gathering, we are pleased to have it considered for nomination on the State and National Register of Historic Places. The status of being on the Register was paramount in keeping the Water Board Barns from being destroyed, as we would like it to help us preserve the chimney. Alcove Preservation Association is in the process of establishing a site and management plan for the Valley Paper Mill property including the chimney and archaeological remnants of the mills stone foundation. A listing on the Register would greatly benefit our endeavors.

Thank you for considering the nomination. We appreciate your continual concern and interest in the preservation of our State's history.

Sincerely,

A handwritten signature in cursive script that reads "Thomas F. Sweeney".

Thomas F. Sweeney
President

cc: Peter Clouse

JOHN A. GRAZIANO, JR
MINORITY LEADER



PETER T. CLOUSE
DEPUTY MINORITY LEADER

CHRISTINE M. BENEDICT
MINORITY WHIP

COUNTY OF ALBANY
COUNTY LEGISLATURE
MINORITY CONFERENCE
13 Einie Dr., Coeymans, NY 12045
(518) 756-6636 (phone and fax)

10/26/2003

John Bonafide
Information Systems Manager
New York State Office of Parks, Recreation and Historic Preservation
P.O. Box 189
Waterford, NY 12188-0189

Re: Letter of Support – Application of Valley Paper Mill property located in Alcove, NY
for inclusion on National and State Registers of Historic Places


Dear Mr. Bonafide:

It is indeed my pleasure to write this letter of support for the application of Valley Paper Mill (Alcove, NY) for inclusion on both the National and New York State Registers of Historic Places.

I am very familiar with this unique site and have worked with the Alcove Preservation Association (APA) for a number of years in an effort to research many aspects of the property and obtain it from Albany County following its in rem foreclosure. As a result of these efforts, we have been able to accumulate much of the land title information for the property and, as the enclosed copy of Resolution 418, adopted by the Albany County Legislature on 10/14/2003, reflects, ownership of this site is in the process of being transferred out of Albany County's name.

In addition to the impressive 98-foot tall brick chimney which still stands today as the entrance to the Alcove Historic District, the site has a long and distinguished history as an early manufacturing site. Based upon the work of a local volunteer historian, we know that the Hannacroix Creek was home to three paper mills, of which the Valley Paper Mill site is one of the best documented.

There are a number of talented and dedicated people whose mission it is to preserve this location for the benefit of current and future generations and, with its inclusion on these historic places registers, our community will be better able to tell its story.

Thank you for your consideration of this application. Please do not hesitate to contact me if I may be of any further assistance.

Very truly yours,


PETER CLOUSE

Albany County Legislator – 37th District (Coeymans, Ravena, Coeymans Hollow and Alcove)
Deputy Minority Leader
PTC/nmrd
Enc.

RESOLUTION NO. 418

AUTHORIZING THE CONVEYANCE OF REAL PROPERTY LOCATED AT 1561 STATE ROUTE 143 IN THE TOWN OF COEYMANS (CHIMNEY TOP SITE) TO THE OPEN SPACE INSTITUTE

Introduced: 10/14/03

By Audit and Finance Committee, Messrs. Houghtaling and Clouse:

WHEREAS, The County of Albany has acquired, through in rem foreclosure, title to a parcel of real property known as Chimney Top at 1561 State Route 143 in the Town of Coeymans, and

WHEREAS, The Open Space Institute has expressed an interest in acquiring the 1.7-acre parcel for \$6,323.88 in delinquent taxes to allow the non-profit Alcove Preservation Association to preserve the site as a small park and maintain the intact 110-foot chimney which was once part of one of the County's earliest paper mills, and

WHEREAS, The Open Space Institute further indicates that the chimney is an important relic of Albany County's industrial history and located just outside the boundary of Alcove's National Historic District, and

WHEREAS, The Commissioner of the Department of Management and Budget has recommended that the County transfer the Chimney Top parcel at 1561 State Route 143 in the Town of Coeymans to the Open Space Institute for the sum mentioned above to permit its preservation as a small park, now, therefore be it

RESOLVED, By the Albany County Legislature that the County Executive is authorized to execute on behalf of the County any documents necessary to convey the aforementioned parcel to the Open Space Institute for \$6,323.88, and, be it further

RESOLVED, That the County Attorney is authorized to approve said conveyance as to form and content, and said conveyance shall include a provision in which the County has the right of reacquisition if the 1.7-acre Chimney Top site at 1561 State Route 143 is no longer used for the aforementioned purposes, and, be it further

RESOLVED, That the Clerk of the County Legislature is directed to forward certified copies of this resolution to the appropriate County Officials.

Resolution was amended by Messrs. Houghtaling and Clouse as follows:

ADD: to the first WHEREAS clause (following "1561 State Route 143") also known as the Valley Paper Mill Property (tax map number 165.-1-15)".

ADD: to the fourth WHEREAS clause (following "1561 State Route 143") also known as the Valley Paper Mill Property (tax map number 165.-1-15)".

ADD: to the second RESOLVED clause (following "1561 State Route 143") also known as the Valley Paper Mill Property (tax map number 165.-1-15)".

Amendment was passed by unanimous vote.

Resolution as amended was adopted by unanimous vote. 10/14/03