

United States Department of the Interior
National Park Service

National Register of Historic Places
Registration Form

This form is for use in nominating or requesting determinations of eligibility for individual properties or districts. See instructions in *How to Complete the National Register of Historic Places Registration Form* (National Register Bulletin 16A). Complete each item by marking "x" in the appropriate box or by entering the information requested. If an item does not apply to the property being documented, enter "N/A" for "not applicable." For functions, architectural classification, materials and areas of significance, enter only categories and subcategories listed in the instructions. Place additional entries and narrative items on continuation sheets (NPS Form 10-900a). Use a typewriter, word processor, or computer, to complete all items.

1. Name of Property

historic name Manion's General Store

other names/site number _____

2. Location

street & number 52 Ferndale Road

not for publication

city or town Ferndale

vicinity

state New York

code NY

county Sullivan

code 105

zip code 12734

3. State/Federal Agency Certification

As the designated authority under the National Historic Preservation Act, as amended, I certify that this nomination request for determination of eligibility meets the documentation standards for registering properties in the National Register of Historic Places and meets the procedural and professional requirements set forth in 36 CFR Part 60. In my opinion, the property meets does not meet the National Register criteria. I recommend that this property be considered significant nationally statewide locally. See continuation sheet for additional comments.

Signature of certifying official/Title

Date

State or Federal agency and bureau

In my opinion, the property meets does not meet the National Register criteria. See continuation sheet for additional comments.

Signature of certifying official/Title

Date

State or Federal agency and bureau

4. National Park Service Certification

I hereby certify that this property is:

entered in the National Register.
 See continuation sheet.

determined eligible for the National Register.
 See continuation sheet.

determined not eligible for the National Register.

removed from the National Register.

other, (explain:) _____

Signature of the Keeper

Date of Action

Edson A. Beall 4-15-04

Manion's General Store

Name of Property

Sullivan County, New York

County and State

5. Classification

Ownership of Property

(Check as many boxes as apply)

- private
- public-local
- public-State
- public-Federal

Category of Property

(Check only one box)

- building(s)
- district
- site
- structure
- object

Number of Resources within Property

(Do not include previously listed resources in the count.)

Contributing	Noncontributing	
1	0	buildings
0	0	sites
0	0	structures
0	0	objects
1	0	Total

Name of related multiple property listing

(Enter "N/A" if property is not part of a multiple property listing.)

N/A

Number of contributing resources previously listed in the National Register

0

6. Function or Use

Historic Functions

(Enter categories from instructions)

COMMERCE/TRADE/department store

Current Functions

(Enter categories from instructions)

COMMERCE/TRADE/specialty store

7. Description

Architectural Classification

(Enter categories from instructions)

no style

Materials

(Enter categories from instructions)

foundation stone

walls wood

roof metal

other

Narrative Description

(Describe the historic and current condition of the property on one or more continuation sheets.)

United States Department of the Interior
National Park Service

Manion's General Store
Ferndale, Sullivan County, New York

National Register of Historic Places Continuation Sheet

Section number 7 Page 1

Manion's General Store is located in the small hamlet of Ferndale, Sullivan County, New York. Ferndale, originally Liberty Falls, is a few miles south of the village of Liberty and west of NY 17, the major north-south highway through the middle of the county. The hamlet is dispersed around the intersection of Ferndale Road (CR 71), which runs east-west, and Ferndale Loomis Road (Town Road 3), which runs north-south. The Mongaup River runs through the hamlet, paralleling Ferndale Loomis Road, as does the right-of-way for the O&W Railroad. Manion's store occupies a small site at the northwest corner of Ferndale Road and Ferndale Loomis Road, the main crossroads of the hamlet. North of the store, a group of nineteenth and early twentieth century residences line both sides of Ferndale Loomis Road, which rises steeply to the intersection of Upper Ferndale Road, where a small two-room wood-frame school survives adjacent to the Shelburne Playhouse (also proposed for NR listing). Upper Ferndale Road was once developed with at least five small hotels or resorts. With the exception of the Shelburne Playhouse, little evidence of them survives today. South of the store, Ferndale Loomis Road also rises steeply from the intersection. This section of the road is the nucleus of the early twentieth century hamlet. The railroad station, several residences, and a few commercial buildings survive; however, a number of others are deteriorated or have been demolished. East and west of the store, scattered historic resources remain, some representing the hamlet's nineteenth-century development.

Built c1915-1925, Manion's General Store is remarkable for its size and extremely high level of integrity. The large rectangular wood-frame building is two and one-half stories tall, five bays wide and three bays deep (71' x 31'). The building sits on a dressed-stone foundation and is built into the hillside so that the basement is exposed on the west elevation. The western half of the building has a deep basement, while the eastern half has only a crawl space. It is possible that the basement survives from an earlier building on the site; however, the building itself was constructed in a single phase. The store is surmounted by a broad gable roof with deep overhanging eaves and exposed rafters with beaded-board soffits resting on small decorative brackets. One large cross-gabled dormer is centered over the storefront. The standing-seam metal roofing is a contemporary

See continuation sheet

United States Department of the Interior
National Park Service

Manion's General Store
Ferndale, Sullivan County, New York

National Register of Historic Places Continuation Sheet

Section number 7 Page 2

replacement. The building is sided with clapboard and features narrow corner boards. Widely spaced windows are placed to accommodate interior functional divisions. Window openings feature narrow wooden moldings and non-historic shutters. Most contain one-over-one double-hung wooden sash windows. On the north elevation, a contemporary oriel window has replaced an original ground level door in the center bay. The single wooden panel door was apparently relocated one bay to the north. On the south elevation, the center bay features a ground level door, which provides access to the basement, double wooden paneled doors to the first story (accessed by a contemporary wooden stair) and a wooden paneled "freight door" to the second floor, originally served by a hoist. On the rear elevation, windows on the exposed basement level are sheltered by a shed-roofed porch on wooden posts. On the eastern third of the rear elevation, a second-story door provides access to what was originally an apartment in this section of the building. The current wooden stair and deck is a contemporary replacement. Windows in each gable and in the dormer light the attic.

The major feature of the façade is a large wooden storefront. Access to the storefront is provided by a wooden stoop with a double stair and a wooden railing. Due to changes in the roadbed, the current stair, while similar to the original, is somewhat higher; the railing is contemporary. The storefront is defined by a wide, recessed center entrance flanked by large windows. Original lettering over the entrance reads "Fred Manion, General Merchandise." A second entrance in the recess east of the door provided access to the post office. The storefront retains original wooden moldings, including vertical wooden muntins and paneled aprons. Horizontal wooden muntins were added in the last few decades for stability. The entire storefront is surmounted by a narrow projecting wooden cornice and flanked by small square window openings.

The interior of the building retains almost complete integrity of plan, functional features, and finishes. On each of the four levels (basement, two floors, and attic), the majority of the space is open. The eastern third of the first floor was originally divided off to accommodate a post office. An original counter with drawers and upper

See continuation sheet

United States Department of the Interior
National Park Service

Manion's General Store
Ferndale, Sullivan County, New York

National Register of Historic Places Continuation Sheet

Section number 7 Page 3

wall with glass windows survives, and the location of the original post office boxes is apparent. A extremely wide, heavy central stair in the western third of the building provides access to all four levels. On the first floor, there are double wooden panel doors at the entrance to the basement stage and a similar set originally enclosed the stage to the second floor. The remainder of the first floor is open and original wooden shelving survives on all walls; one long wooden counter divides off the rear section of the floor and additional counters survive in storage. On the second floor, the western two-thirds of the building is also open, with shelving along the walls. The floor joists for the attic are exposed and there is no evidence of an original second-floor ceiling. On the eastern third of the second floor, over the post office, the space is divided into a five-room apartment, originally the postmaster's quarters. The apartment retains its original moldings and finishes. The attic story is a single undivided space, including the gabled dormer. Rafters and collar beams are exposed and original wooden sheathing boards can be seen.

See continuation sheet

Manion's General Store

Name of Property

Sullivan County, New York

County and State

8 Statement of Significance

Applicable National Register Criteria

(Mark "x" in one or more boxes for the criteria qualifying the property for National Register listing.)

- A Property is associated with events that have made a significant contribution to the broad patterns of our history.
B Property is associated with the lives of persons significant in our past.
C Property embodies the distinctive characteristics of a type, period or method of construction or represents the work of a master, or possesses high artistic values, or represents a significant and distinguishable entity whose components lack individual distinction.
D Property has yielded, or is likely to yield, information important in prehistory or history.

Criteria considerations

(mark "x" in all the boxes that apply.)

Property is:

- A owned by a religious institution or used for religious purposes.
B removed from its original location.
C a birthplace or grave.
D a cemetery.
E a reconstructed building, object or structure.
F a commemorative property.
G less than 50 years of age or achieved significance within the past 50 years.

Narrative Statement of Significance

(Explain the significance of the property on one or more continuation sheets.)

9. Major Bibliographical References

Bibliography

(cite the books, articles, and other sources used in preparing this form on one or more continuation sheets.)

Previous documentation on file (NPS):

- preliminary determination of individual listing (36 CFR 67) has been requested
previously listed in the National Register
previously determined eligible by the National Register
designated a National Historic Landmark
recorded by Historic American Buildings Survey
recorded by Historic American Engineering Record

Areas of Significance

(Enter categories from instructions)

commerce
architecture

Period of Significance

c1915-c1925

Significant Dates

na

Significant Person

(Complete if Criterion B is marked above)

na

Cultural Affiliation

na

Architect/Builder

unknown

Primary location of additional data

- x State Historic Preservation Office
Other State agency
Federal agency
Local government
University
Other

Name of repository:

United States Department of the Interior
National Park Service

Manion's General Store
Ferndale, Sullivan County, New York

National Register of Historic Places Continuation Sheet

Section number 8 Page 1

Manion's General Store is significant for its association with the growth and development of Ferndale and as an extremely intact example of a typical early twentieth century mixed-use commercial building. Constructed c1915-c1925, the building incorporated a department store and a post office, two functions typically housed in buildings of this type. Manion's served the small hamlet of Ferndale during its heyday as a resort community in the early twentieth century, when hundreds of hotels were operating in the Liberty-Ferndale area, the heart of the Jewish resort region. The store was constructed by Fred and Thomas Manion, two members of a prominent local family. The two brothers served as store manager and postmaster, respectively. Manion's was a large concern, noted for providing a wide range of hardware and household goods to the hamlet and surrounding region. In overall form, the building is typical of the multi-function buildings found in hamlets throughout Sullivan County. The large rectangular building is modest and unembellished; its most important feature is the large three-bay wooden storefront. On the interior, the first floor is divided into retail space (west side) and post office (east side), both retaining all of the appropriate built-in cupboards, shelving, counters, and post office window. On the second floor, the space over the post office is finished as a five-room apartment for the postmaster. On the retail side of the building, a wide central stair provides access to the basement, second floor and attic, all of which were apparently used as storage space for the store's large inventory. Fred Manion operated the store almost until his death in 1979, and the post office remained in the building until the 1980s. During this long tenure, the building remained virtually unchanged, and functional divisions and period finishes survive throughout. Manion's General Store is remarkable for its ability to illustrate typical patterns of commerce in small hamlets such as Ferndale.

Jewish Settlement in the Catskills

The first Jews arrived in the western Catskills c1900. These Jews immigrated from eastern Europe to escape "economic decline and physical persecution" in their homelands.¹ Many settled in the western Catskills, where

¹ Gerald Sorin, *A Time for Building: The Third Migration 1880-1920* (Baltimore: Johns Hopkins University Press, 1992), 1.

United States Department of the Interior
National Park Service

Manion's General Store
Ferndale, Sullivan County, New York

National Register of Historic Places Continuation Sheet

Section number 8 Page 2

they became active first in farming and later, particularly when farms failed to provide a dependable income, in resort activities. Perhaps the most significant even in the development of the Jewish resort culture in the Catskills was the arrival of the railroad, a convenient and inexpensive route to a natural paradise relatively close to the city. The O&W headed north from New York City to Middletown before traveling northwest through the heart of Sullivan County and making stops at Summitville, Mountaindale, Centerville, Fallsburg, Ferndale, Liberty, and beyond. In 1886 the railroad published its first issue of *Summer Homes*, which promoted the area's scenic and recreational attractions. Although many of the early ads specified "no Jews," this began to change in the early twentieth century, and soon many of the ads were written with assurances such as "dietary laws observed" to attract a Jewish clientele. By the 1920s, the number of small hotels began to multiply greatly until they numbered in the hundreds, launching a "Golden Age" of small hotels in the Catskills owned by and catering to Jewish vacationers from New York City. These were concentrated in southern Ulster and western Sullivan Counties, particularly in the Sullivan County townships of Liberty, Thompson and Fallsburg.

Town of Liberty

The town of Liberty, formed on 31 March 1807, is the fourth oldest of Sullivan County's towns. The ninety-five square mile town is in the north-central part of the county. Liberty's earliest European-American settlers, many of whom were from Connecticut, arrived in the last years of the eighteenth century and settled northwest of the village of Liberty near Broadhead Pond (now Revonah Lake). Liberty's pattern of development was similar to that of other Sullivan County towns, with subsistence farms and tanneries dominating the economy until the Civil War, after which the hemlock forests were too depleted to support tanning. In the late nineteenth century, the Catskills began to attract tourists; they also became a popular destination for tuberculosis patients from New York City, particularly working-class sufferers who lacked the resources to travel to more renowned but farther locations, such as the Adirondacks. The town of Liberty, which boasted a high elevation, became the site of the large and well-known Loomis Sanitarium, built in 1896 with the support of J.P. Morgan, who had lost

See continuation sheet

United States Department of the Interior
National Park Service

Manion's General Store
Ferndale, Sullivan County, New York

National Register of Historic Places Continuation Sheet

Section number 8 Page 3

wife to the disease. Soon, spurred on by advertising for the O&W Railroad, tubercular patients and their families began flocking to the Liberty area, both sparking and overwhelming the nascent resort industry.

The hamlet of Ferndale is just south of the village of Liberty. Originally known as Liberty Falls, the hamlet remained a small valley crossroads until the arrival of the O&W Railroad in 1872. In c1870, the hamlet was noted as having about one hundred inhabitants and one hotel, a schoolhouse, two stores, two groceries, a grist mill, two tanneries, three saw mills, one wagon shop, and a blacksmith shop.² Its most important business was probably the large Liberty Falls Sole Leather Tannery. After 1872, Liberty Falls acquired a railroad station (extant). It was also noteworthy as the site of a one-hundred-foot-high wooden railroad trestle, which stretched more than one thousand feet over the Mongaup River valley (the trestle was later replaced by an iron one, which is no longer extant).

In the late 1880s, *Summer Homes* advertised three farms with guest accommodations in what was still known as Liberty Falls; in the next decade, numerous other boarding houses and hotels opened in the immediate area. In 1897, the O&W Railroad changed the name of the Liberty Falls station to Ferndale in an effort to disassociate the hamlet from Liberty's reputation as a haven for the sick and create a more enticing image for potential tourists. Beginning in c1912, the first Jewish vacationers began to frequent Ferndale, and by the 1920s, the number of Jewish boarding houses had increased significantly. Ferndale (along with Parksville and Swan Lake) became one of several locations in the town of Liberty with an exceptionally large number of hotels. The Catskill Institute has collected the names of fifty-seven small hotels in Ferndale alone. These include the Shelburne, Upper Ferndale Country Club, Empire Hotel, Balfour Hotel, Stier's Hotel, Ferndale Mansion and Kanco Inn. The world famous Grossinger's Hotel was located only a few miles away. By the 1960s, when Grossinger's and other large-scale hotels dominated the resort market, the small hotels had begun to decline.

² *Gazetteer and Business Directory of Sullivan County for 1872-73* (Syracuse: Hamilton Child: 1872).

United States Department of the Interior
National Park Service

Manion's General Store
Ferndale, Sullivan County, New York

National Register of Historic Places Continuation Sheet

Section number 8 Page 4

Many were abandoned and/or destroyed by fire. Although numerous buildings survive today, most of them have been adapted for other uses.

During the resort era, the hamlet of Ferndale was a busy service community with many thriving businesses that supported the hotel trade. The railroad station was always crowded with wagons and taxies to take visitors up the hills to the nearby resorts. After a large fire on 16 June 1913 destroyed much of its business district, the hamlet was quickly redeveloped, and during the next few decades, Ferndale boasted a pharmacy (with ice cream parlor), Katz's Bakery, Wolf's Meat and Poultry Market, a barber shop, a synagogue and Steigler's Dairy. One of the most typical and important features of Sullivan County's resort towns was the steam laundry. In Ferndale, the huge three-story laundry was located across the street from the pharmacy. Fleets of green trucks would drop off and pick up towels and linens from the area's many hotels.

Manion's General Store

The Manion family, of Irish descent, had apparently settled in Sullivan County by the 1860s. An obituary for a James H. Manion (1865-1940) notes that he was born on a farm in nearby Swan Lake. In the early twentieth century, a large extended Manion family lived in Ferndale. Among them were William and Anna Cain Manion, who occupied a large residence on the west side of Ferndale Loomis Road, immediately behind the general store. The senior Manions had six children. Fred Manion (1893-1979), proprietor of the general store, was born in Ferndale and some or all of his four siblings were also Ferndale natives. Most of them remained local. Thomas Manion (1891-1966) was the postmaster and William J. Manion (1890-1946) was a justice of the peace and town board member. Winifred Manion Ryan, a sister, also remained in Ferndale, occupying a residence on the east side of Ferndale Loomis Road, while Joseph Manion moved to Buffalo, where he managed a cable company. A sixth sibling, Mother M. Regis, became a nun and was stationed at the College of New Rochelle.

United States Department of the Interior
National Park Service

Manion's General Store
Ferndale, Sullivan County, New York

National Register of Historic Places Continuation Sheet

Section number 8 Page 5

Postcards printed before 1900 show an earlier commercial building on the site of Manion's store. This was most likely the post office/grocery building destroyed in the 1913 fire. The latter was described as a large three-story wood-frame building with twenty-eight rooms. At the time it burned, this building housed the post office and J. Benjamin's grocery on the first floor and apartments above.³ The original date of construction for this building is unknown; however, the upper floors could have also been used as lodging for an inn in an earlier period.

The owner and/or proprietor (other than "J. Benjamin") of the earlier building are not known; however, it is believed that Fred and Thomas Manion constructed the nominated building sometime after the 1913 fire. At the date of the fire, the Manion brothers were twenty and twenty-two years old, perhaps too young to have acquired the capital to invest in such a large building and inventory to fill it. It is possible that their parents, whose home was on an adjacent parcel, assisted them or that the building was constructed slightly later; however, construction most likely occurred within a decade of the fire.

Fred Manion carried a wide variety of merchandise, including household goods (such as pots and pans), hardware, paint, clothing, shoes, feed and grain, harnesses, and packaged food, such as bread, soup, flour and candy. The building was clearly designed with a large retail operation in mind. The substantial size of the structure, large open spaces on each floor and in the attic, extensive built-in shelving, and a wide, heavy central stair from basement to attic all provided for the efficient storage and movement of large quantities and different types and sizes of goods. On the west end elevation, wide double doors providing exterior access to the basement and first floor and a large freight door with hoist on the second floor all facilitated the transfer of stock to and from the store.

³ Delbert VanEtten, "The Ferndale Fire," article excerpted from unknown periodical, collection of the Sullivan County Historical Society, Hurleyville, New York.

United States Department of the Interior
National Park Service

Manion's General Store
Ferndale, Sullivan County, New York

National Register of Historic Places Continuation Sheet

Section number 8 Page 6

The building's functional divisions and finishes also clearly reflect its intended uses. On the first floor, the space is divided for retail and post office use. The retail space, which occupies approximately two-thirds of the floor, is open and oriented around the center stair. The post office is divided off by a wall with postal windows and built-in drawers, shelves, and, originally, postal boxes. While a central double door serves the entire first floor, an adjacent single door in the angled recess allows separate entrance into the post office space. The second floor is also divided into open storage space with minimal finishes and a five-room apartment for the postmaster. The latter, which has a separate entrance on the rear of the building, features plaster walls and period moldings throughout. The attic is a single unobstructed space well lit by full size gable end windows and a window in the large cross-gabled dormer on the front of the building.

While Tom Mansion, who apparently never married, lived in the postmaster's quarters, his brother Fred resided in Liberty with his wife, Florence McCallum, and their daughter, Jane Manion (Doughty), who gave them twelve grandchildren. Fred Manion was a successful businessman who served on the board of the Sullivan County National Bank of Liberty for most of his adult life. Despite his success, he continued to operate the Ferndale store until the late 1970s. He made few if any changes to the building, thus accounting for its remarkable state of preservation and ability to illustrate early twentieth century commercial practices.

Manion's General Store

Name of Property

Sullivan County, New York

County and State

10. Geographical Data

Acreage of property less than one acre

UTM References

(Place additional UTM references on a continuation sheet.)

1	18	521662	4624486	3			
	Zone	Easting	Northing		Zone	Easting	Northing
2				4			

See continuation sheet

Verbal Boundary Description

(Describe the boundaries of the property on a continuation sheet.)

Boundary Justification

(Explain why the boundaries were selected on a continuation sheet.)

11. Form Prepared By

name/title Kathleen LaFrank, Program Analyst

organization New York State Historic Preservation Office date October 2003

street & number Peebles Island State Park, Box 189 telephone 518-237-8643 x 3261

city or town Waterford state New York zip code 12188

Additional Documentation

Submit the following items with the completed form:

Continuation Sheets

Maps

- A **USGS map** (7.5 or 15 minute series) indicating the property's location.
- A **Sketch map** for historic districts and properties having large acreage or numerous resources.

Photographs

Representative **black and white photographs** of the property.

Additional items

(Check with the SHPO or FPO for any additional items)

Property Owner

(Complete this item at the request of the SHPO or FPO.)

name _____

street & number _____ telephone _____

city or town _____ state _____ zip code _____

Paperwork Reduction Act Statement: This information is being collected for applications to the National Register of Historic Places to nominate properties for listing or determine eligibility for listing, to list properties and to amend existing listings. Response to this request is required to obtain a benefit in accordance with the National Historic Preservation Act, as amended (16 U.S.C.470 *et seq.*)

Estimated Burden Statement: Public reporting burden for this form is estimated to average 18.1 hours per response including time for reviewing instructions, gathering and maintaining data and completing and reviewing the form. Direct comments regarding this burden estimate or any aspect of this form to the Chief, Administrative Services Division, National Park Service, P.O. Box 37127, Washington, DC 20013-7127; and the Office of Management and Budget, Paperwork Reductions Projects (1024-0018), Washington, DC 20503.

United States Department of the Interior
National Park Service

Manion's General Store
Ferndale, Sullivan County, New York

National Register of Historic Places Continuation Sheet

Section number 9 Page 1

Bibliography

Evers, Alf. *The Catskills: From Wilderness to Woodstock*. rev. ed. Woodstock: Overlook Press, 1992.

Gazetteer and Business Directory for Sullivan County for 1872-73. Syracuse: Hamilton Child, 1872.

Helmer, William F. *O&W: The Long Life and Slow Death of the New York, Ontario and Western Railway*. Hensonville, NY: Blackdome, 2000.

Hurleyville, New York. Sullivan County Historical Society. Ferndale File.

O&W Railroad. *Summer Homes*. n.p., 1930.

Sorin, Gerard. *A Time for Building: The Third Migration 1880-1920*. Baltimore: Johns Hopkins University Press, 1992.

Wakefield, Manville B. *To the Mountains by Rail*. Grahamsville: Wakefield Press, 1970.

Manion's General Store

Name of Property

Sullivan County, New York

County and State

10. Geographical Data

Acreage of property less than one acre

UTM References

(Place additional UTM references on a continuation sheet.)

1	18	<u>521662</u>	<u>4624486</u>	3			
	Zone	Easting	Northing		Zone	Easting	Northing
2				4			

See continuation sheet

Verbal Boundary Description

(Describe the boundaries of the property on a continuation sheet.)

Boundary Justification

(Explain why the boundaries were selected on a continuation sheet.)

11. Form Prepared By

name/title Kathleen LaFrank, Program Analyst

organization New York State Historic Preservation Office date October 2003

street & number Peebles Island State Park, Box 189 telephone 518-237-8643 x 3261

city or town Waterford state New York zip code 12188

Additional Documentation

Submit the following items with the completed form:

Continuation Sheets

Maps

- A **USGS map** (7.5 or 15 minute series) indicating the property's location.
- A **Sketch map** for historic districts and properties having large acreage or numerous resources.

Photographs

Representative **black and white photographs** of the property.

Additional items

(Check with the SHPO or FPO for any additional items)

Property Owner

(Complete this item at the request of the SHPO or FPO.)

name _____

street & number _____ telephone _____

city or town _____ state _____ zip code _____

Paperwork Reduction Act Statement: This information is being collected for applications to the National Register of Historic Places to nominate properties for listing or determine eligibility for listing, to list properties and to amend existing listings. Response to this request is required to obtain a benefit in accordance with the National Historic Preservation Act, as amended (16 U.S.C.470 *et seq.*)

Estimated Burden Statement: Public reporting burden for this form is estimated to average 18.1 hours per response including time for reviewing instructions, gathering and maintaining data and completing and reviewing the form. Direct comments regarding this burden estimate or any aspect of this form to the Chief, Administrative Services Division, National Park Service, P.O. Box 37127, Washington, DC 20013-7127; and the Office of Management and Budget, Paperwork Reductions Projects (1024-0018), Washington, DC 20503.

United States Department of the Interior
National Park Service

Manion's General Store
Ferndale, Sullivan County, New York

National Register of Historic Places Continuation Sheet

Section number 10 Page 1

Verbal Boundary Description

The boundary is indicated by a heavy line on the enclosed map with scale.

Boundary Justification

The boundary includes the original parcel associated with the property.

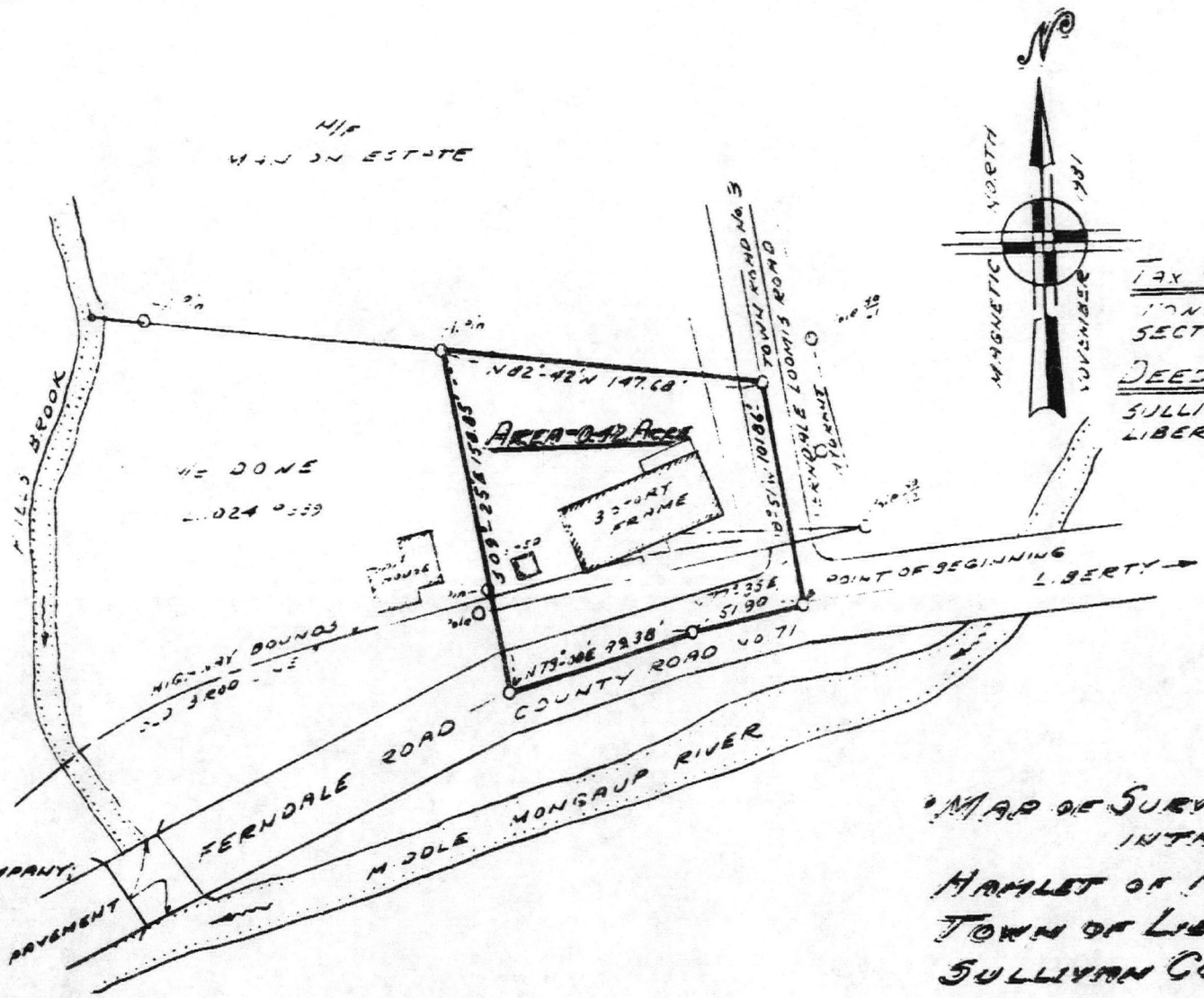
copies from the original of this survey may not be used with an original of the land surveyor's seal or his embossed seal shall not be considered to be a valid true copy."

any authorized alteration or addition to a survey or plan bearing a licensed land surveyor's seal is a violation of section 7209, sub-division 2, of the New York State Education Law."

Guarantees or Certifications indicated hereon certify that this survey was prepared in accordance with the existing Code of Practice for Land Surveyors adopted by the New York State Association of Professional Land Surveyors. Said guarantees or certifications shall run only to the person for whom the survey is prepared, and on behalf of the title company, governmental agency and lending institution listed hereon, and the assignees of the lending institution. Guarantees or certifications are not transferable to other institutions or subsequent owners."

CERTIFIED TO:
 MR. ERIC GERRY;
 PORT TLE GUARANTEE COMPANY;
 THE SILVERMAN GUMME
 ATTORNEY

Thomas D. Martin
 THOMAS D. MARTIN P.L.S. No. 48361



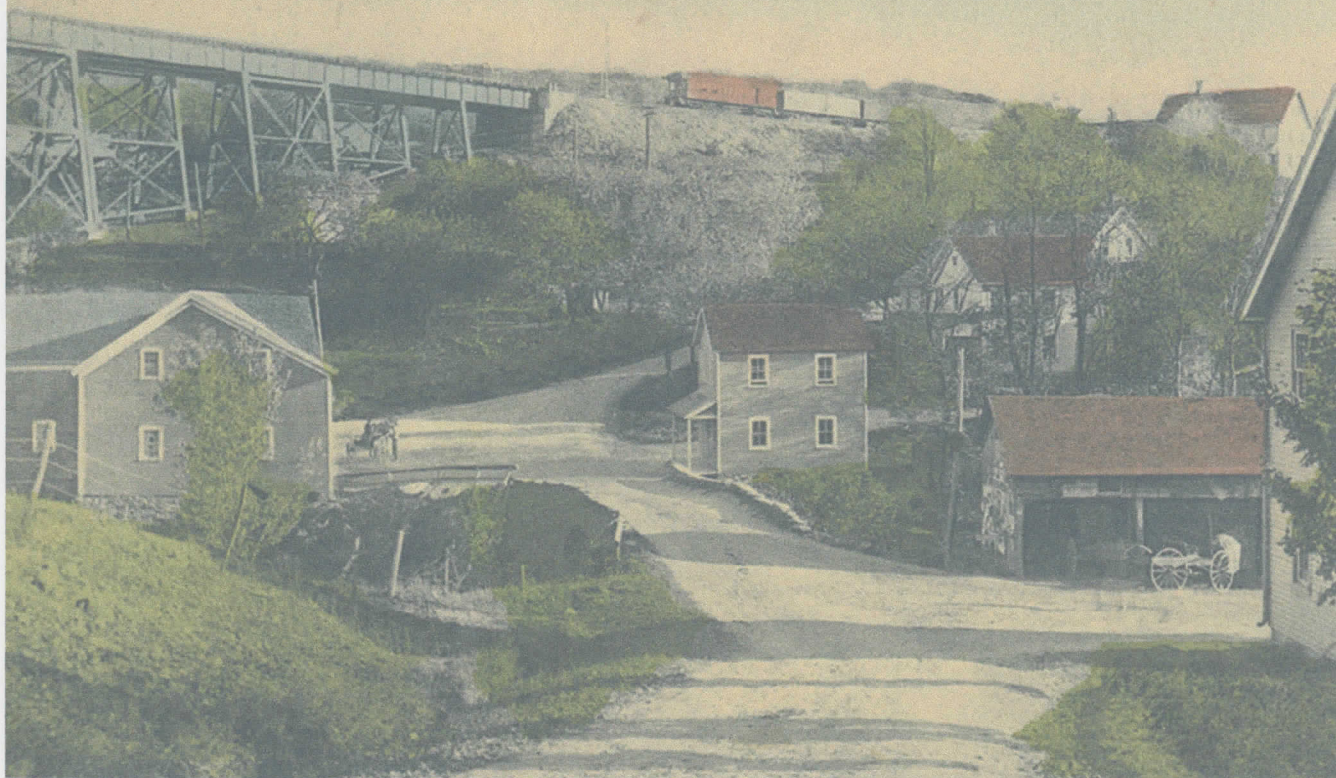
TAX MAP REFERENCE
 TOWN OF LIBERTY
 SECTION 36 BLOCK 1 LOT 50
 DEED REFERENCE:
 SULLIVAN COUNTY
 LIBER 359 PAGE 111

MAP OF SURVEY OF LAND
 IN THE
 HAMLET OF FERNDALE
 TOWN OF LIBERTY
 SULLIVAN COUNTY, N.Y.
 FLORENCE M. MANION
 TO
 GERRY
 SCALE: 1"=50' NOVEMBER 1981

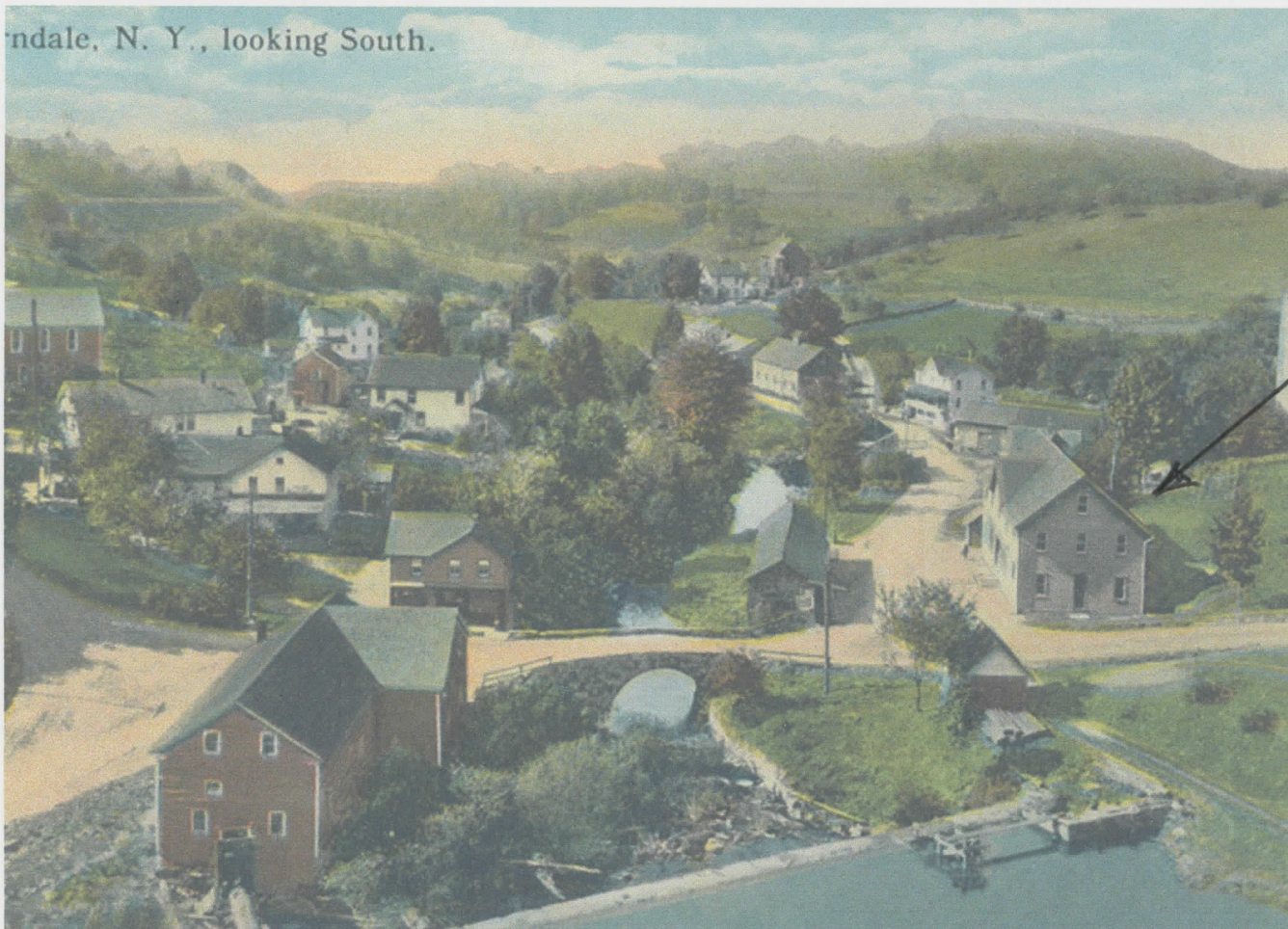
EXHIBIT B

Manion's General Store

"In the Heart" of FERNDALE, N. Y.

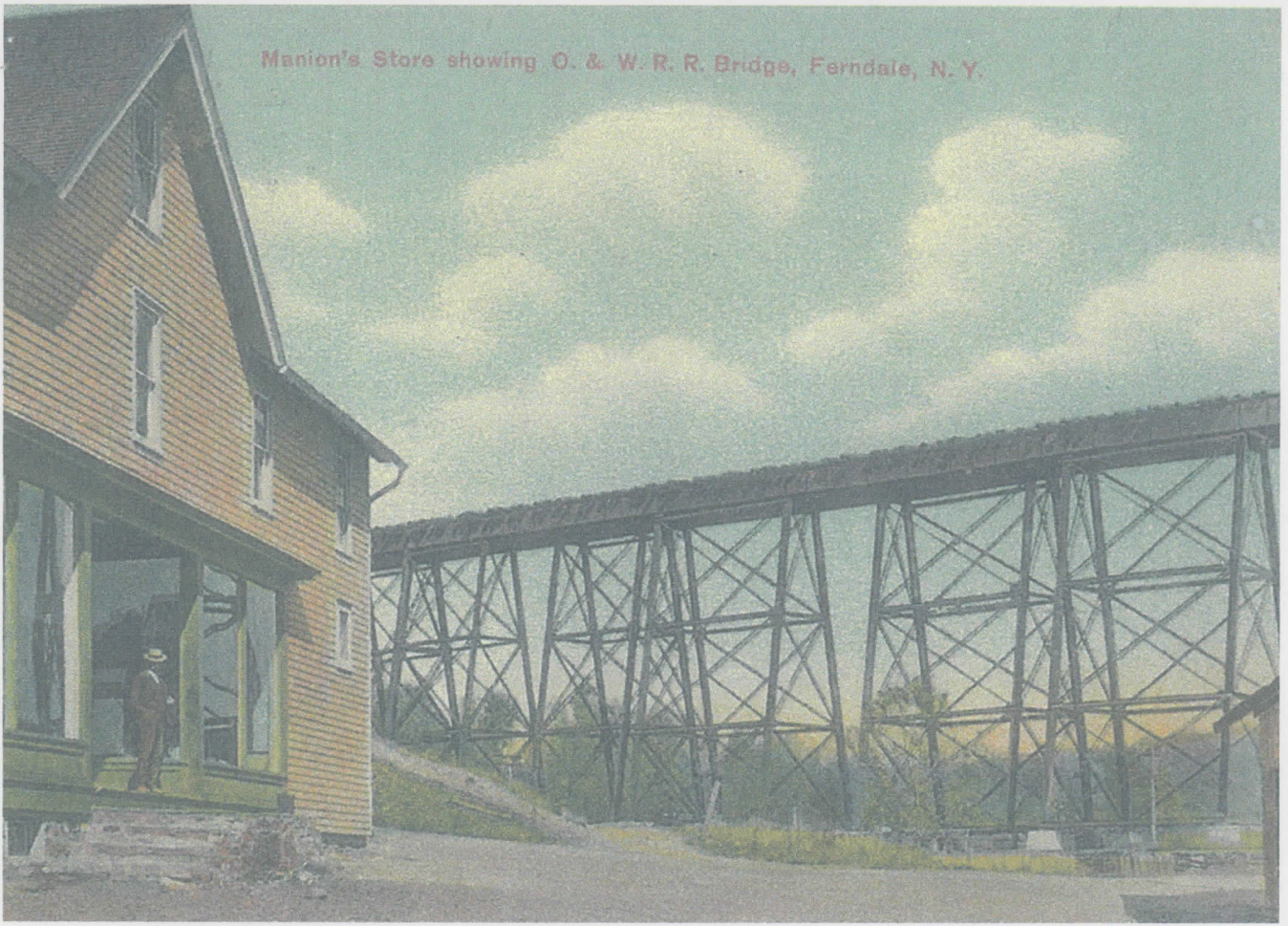


ndale, N. Y., looking South.

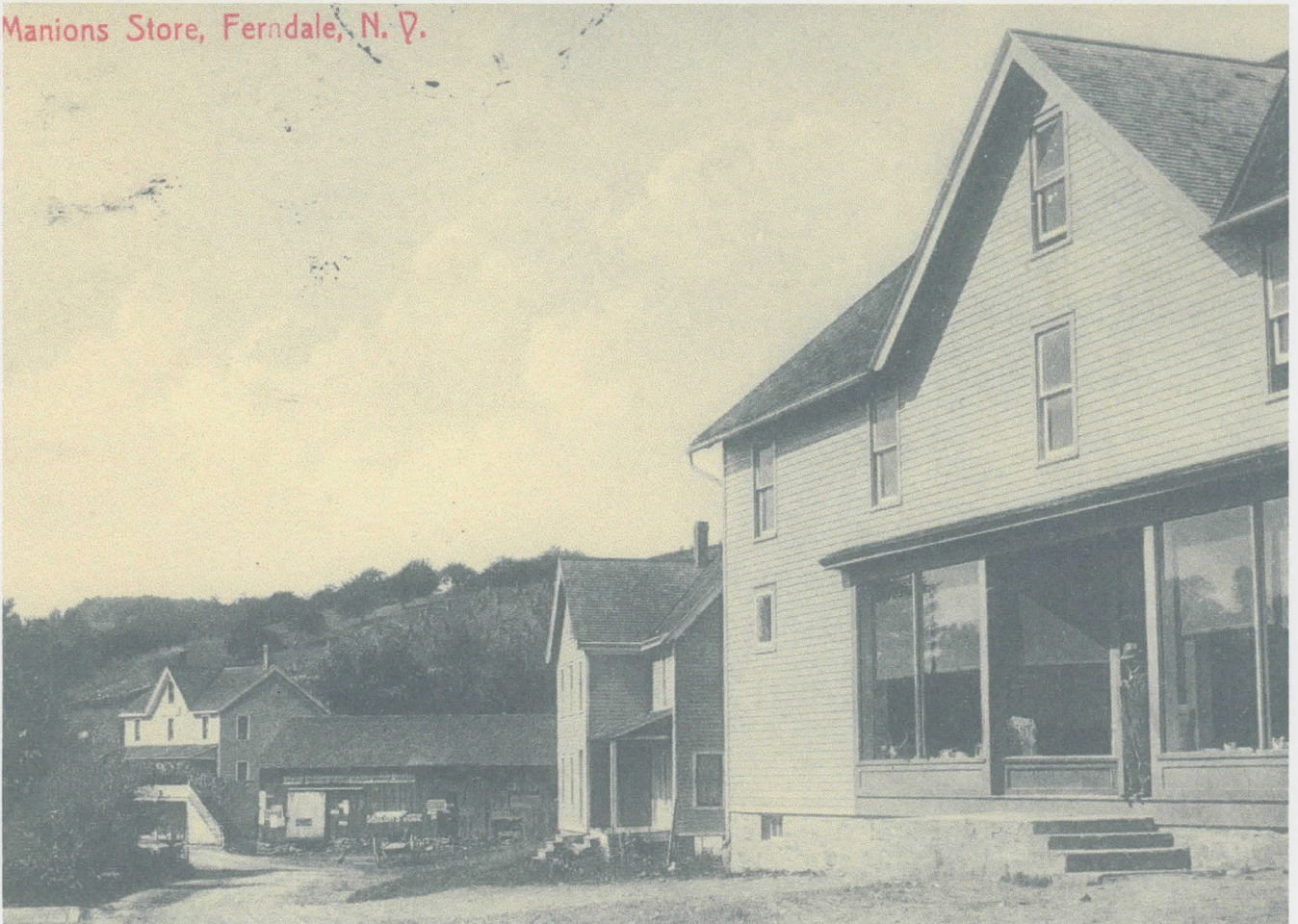


MANION'S General Store - Historic Postcards

Manion's Store showing O. & W. R. R. Bridge, Ferndale, N. Y.



Manions Store, Ferndale, N. Y.



Manion's General Store - Historic Postcards

UNITED STATES DEPARTMENT OF THE INTERIOR
NATIONAL PARK SERVICE

NATIONAL REGISTER OF HISTORIC PLACES
EVALUATION/RETURN SHEET

REQUESTED ACTION: NOMINATION

PROPERTY NAME: Manion's General Store

MULTIPLE NAME:

STATE & COUNTY: NEW YORK, Sullivan

DATE RECEIVED: 3/05/04 DATE OF PENDING LIST: 3/31/04
DATE OF 16TH DAY: 4/15/04 DATE OF 45TH DAY: 4/18/04
DATE OF WEEKLY LIST:

REFERENCE NUMBER: 04000285

REASONS FOR REVIEW:

APPEAL: N DATA PROBLEM: N LANDSCAPE: N LESS THAN 50 YEARS: N
OTHER: N PDIL: N PERIOD: N PROGRAM UNAPPROVED: N
REQUEST: N SAMPLE: N SLR DRAFT: N NATIONAL: N

COMMENT WAIVER: N

ACCEPT RETURN REJECT 4/15/04 DATE

ABSTRACT/SUMMARY COMMENTS:

Entered in the
National Register

RECOM./CRITERIA _____

REVIEWER _____ DISCIPLINE _____

TELEPHONE _____ DATE _____

DOCUMENTATION see attached comments Y/N see attached SLR Y/N

If a nomination is returned to the nominating authority, the nomination is no longer under consideration by the NPS.



Antiques

Manion's General Store

Ferndale, Sullivan Co., NY

Photo: R. Dadras 2003

Neg: Sullivan Co. Div. of Planning, Monticello, NY

View: Facade, front entrance

#1

DEC. 2003 FRK

DEC. 2003 FRK



Antiques

Antiques
Open 10:00 AM - 5:00 PM
7 days a week

Manion's General Store

Ferndale, Sullivan Co. NY

Photo: R. Dadras 2003

Neg: Sullivan Co. Div. of Planning, Monticello, NY

View: Facade

#2

DEC. 2003 FRK

DEC. 2003 FRK

DEC. 2003 FRK



Manion's General Store

Ferndale, Sullivan Co. NY

Photo: R. Dadras 2003

Neg: Sullivan Co. Div. of Planning, Monticello, NY

View: facade

#3

DEC. 2003 FRK

DEC. 2003 FRK

2003 FRK



STOP

For Sale
603-238-1111

Manion's General Store

Ferndale, Sullivan Co., NY

Photo: R. Dadras 2003

Neg: Sullivan Co. Planning Dept., Monticello, NY

View: Rear, from Ferndale-Loomis Rd.

#4

DEC. 2003 FRK

DEC. 2003 FRK

DEC. 2003 FRK



Manion's General Store

Ferndale, Sullivan County, NY

Photo: R. Dodras 2003

Neg: Sullivan Co. Div. of Planning, Monticello, NY

View: Interior, Main floor

#5

DEC. 2003 FRK

DEC. 2003 FRK



Manion's General Store
Ferndale, Sullivan Co., NY

Photo: R. Dadras 2003

Neg: Sullivan Co. Div. of Planning Monticello, NY

View: Interior, Main Floor

#6

DEC. 2003 FRK

DEC. 2003 FRK

2003 FRK



Manion's General Store
Ferndale, Sullivan Co. NY

Photo: R. Dadras 2003

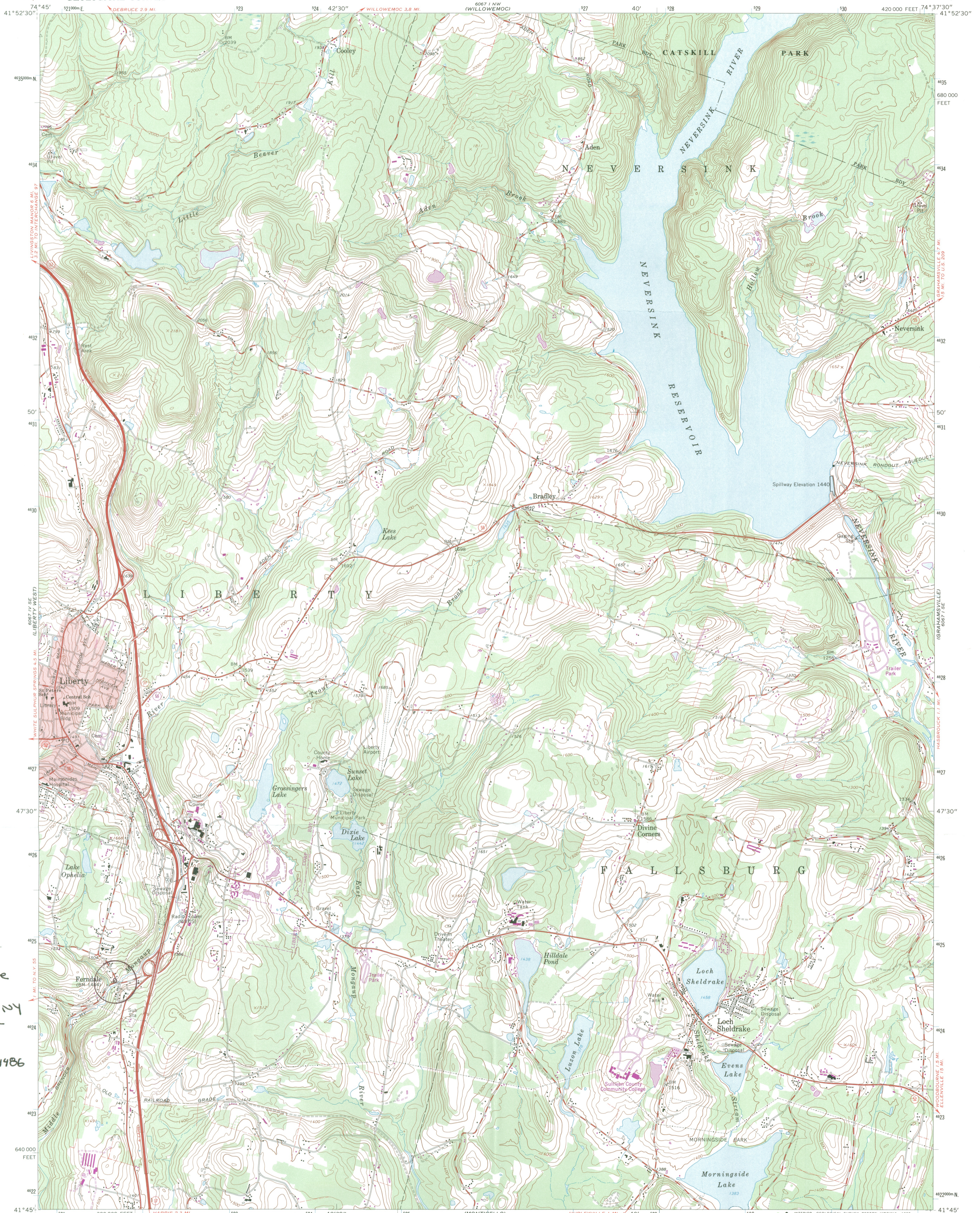
Neg: Sullivan Co. Div of Planning, Monticello, NY

View: Interior, Attic (3rd floor)

#7

DEC. 2003 FRK

DEC. 2003 FRK



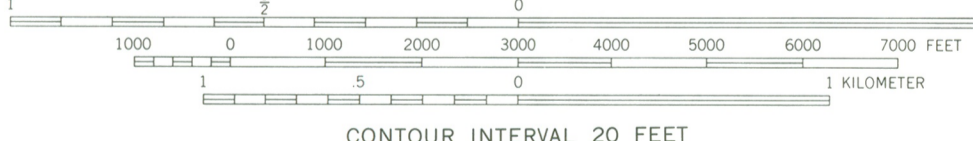
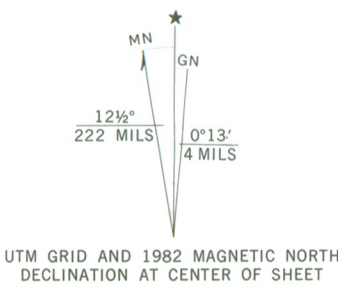
Manson's
General Store
Ferndale
Sullivan Co NY
Liberty East
quad
18/521662/462486

Mapped, edited, and published by the Geological Survey

Control by USGS and NOS/NOAA
Topography by photogrammetric methods from aerial photographs taken 1963. Field checked 1966

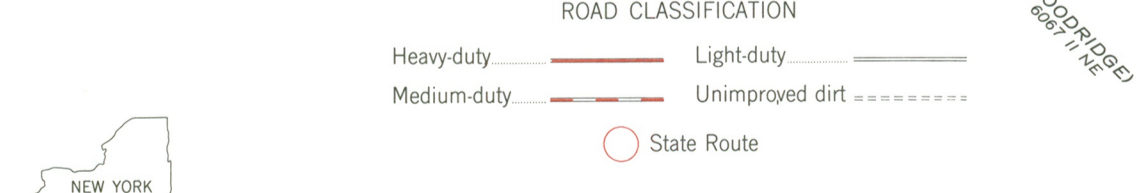
Polycyclic projection. 10,000-foot grid ticks based on New York coordinate system, east zone. 1000-meter Universal Transverse Mercator grid ticks, zone 18, shown in blue. 1927 North American Datum. To place on the predicted North American Datum 1983 move the projection lines 5 meters south and 33 meters west as shown by dashed corner ticks

Fine red dashed lines indicate selected fence and field lines where generally visible on aerial photographs. This information is unchecked
Red tint indicates area in which only landmark buildings are shown
There may be private inholdings within the boundaries of the National or State reservations shown on this map



CONTOUR INTERVAL 20 FEET
NATIONAL GEODETIC VERTICAL DATUM OF 1929

THIS MAP COMPLIES WITH NATIONAL MAP ACCURACY STANDARDS
FOR SALE BY U. S. GEOLOGICAL SURVEY
DENVER, COLORADO 80225, OR RESTON, VIRGINIA 22092
A FOLDER DESCRIBING TOPOGRAPHIC MAPS AND SYMBOLS IS AVAILABLE ON REQUEST



LIBERTY EAST, N. Y.

N4145—W7437.5/7.5
1966
PHOTOREVISED 1982
DMA 6067 1 SW—SERIES V821

Revisions shown in purple and woodland compiled from aerial photographs taken 1981 and other sources. This information not field checked. Map edited 1982

STATEMENT OF OWNER SUPPORT

Before an individual nomination proposal will be reviewed or nominated, the owner(s) of record must sign and date the following statement:

I, Ronald Thomas Greco, am the owner of the property at
(print or type owner name)

52 Ferndale Road, Ferndale, N.Y. 12934
(street number and name, city, village or town, state of nominated property)

I support its consideration and inclusion in the State and National Registers of Historic Places.

Ronald Greco 4/1/03
(signature and date)

P.O. Box 563
Smallwood, N.Y. 12978
(mailing address)

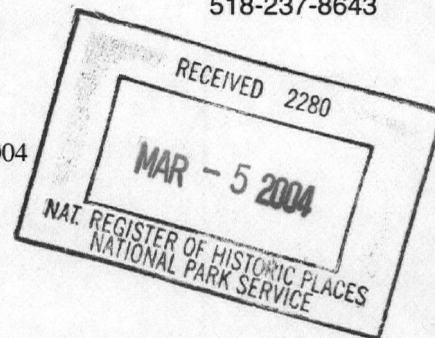


New York State Office of Parks, Recreation and Historic Preservation
Historic Preservation Field Services Bureau
Peebles Island, PO Box 189, Waterford, New York 12188-0189

518-237-8643

Bernadette Castro
Commissioner

February 19, 2004



Ms. Alexis Abernathy
National Park Service
National Register of Historic Places
1201 Eye St. NW
8th Floor
Washington, D.C. 20005

Re: Transmittal of National Register
Nominations

Dear Ms. Abernathy:

I am pleased to transmit four new National Register nominations to be considered for listing by the Keeper of the National Register as follows:

Palatine German Frame House, Herkimer, Herkimer Co., NY

Peter Yawger House, Union Springs, Cayuga Co., NY

Shelburne Playhouse, Ferndale, Sullivan Co., NY

Manion's General Store, Ferndale, Sullivan Co., NY

Thank you for your assistance in processing these proposals. Please feel free to call on me at 518-237-8643 ext. 3258 if any questions arise.

Sincerely,

Mark L. Peckham
National Register
Program Coordinator

enclosures