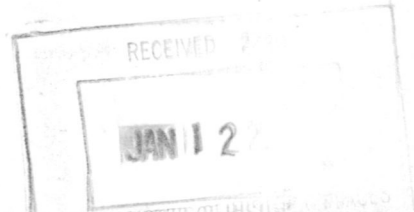


United States Department of the Interior  
National Park Service



National Register of Historic Places  
Registration Form

This form is for use in nominating or requesting determinations of eligibility for individual properties or districts. See instructions in *How to Complete the National Register of Historic Places Registration Form* (National Register Bulletin 16A). Complete each item by marking "x" in the appropriate box or by entering the information requested. If an item does not apply to the property being documented, enter "N/A" for "not applicable." For functions, architectural classification, materials and areas of significance, enter only categories and subcategories listed in the instructions. Place additional entries and narrative items on continuation sheets (NPS Form 10-900a). Use a typewriter, word processor, or computer, to complete all items.

1. Name of Property

historic name Fly Creek Grange No. 844

other names/site number Fly Creek Historical Society and Museum

2. Location

street & number 208 Cemetery Road

not for publication

city or town Fly Creek

vicinity

state New York

code NY

county Otsego

code 077

zip code 13337

3. State/Federal Agency Certification

As the designated authority under the National Historic Preservation Act, as amended, I certify that this  nomination  request for determination of eligibility meets the documentation standards for registering properties in the National Register of Historic Places and meets the procedural and professional requirements set forth in 36 CFR Part 60. In my opinion, the property  meets  does not meet the National Register criteria. I recommend that this property be considered significant  nationally  statewide  locally.  See continuation sheet for additional comments.

*Michelle Carter*  
Signature of certifying official/Title

*SAPO* 10/03/03  
Date

State or Federal agency and bureau

In my opinion, the property  meets  does not meet the National Register criteria.  See continuation sheet for additional comments.

Signature of certifying official/Title

Date

State or Federal agency and bureau

4. National Park Service Certification

I hereby certify that this property is:

entered in the National Register.  
 See continuation sheet.

determined eligible for the National Register.  
 See continuation sheet.

determined not eligible for the National Register.

removed from the National Register.

other, (explain): \_\_\_\_\_

Signature of the Keeper

Date of Action

*Barbara Savage*

2/25/04

Fly Creek Grange No. 844

Name of Property

Otsego County, New York

County and State

5. Classification

Ownership of Property

(Check as many boxes as apply)

- private
- public-local
- public-State
- public-Federal

Category of Property

(Check only one box)

- building(s)
- district
- site
- structure
- object

Number of Resources within Property

(Do not include previously listed resources in the count.)

Contributing	Noncontributing	
1	0	buildings
0	0	sites
0	0	structures
0	0	objects
1	0	Total

Name of related multiple property listing

(Enter "N/A" if property is not part of a multiple property listing.)

N/A

Number of contributing resources previously listed in the National Register

0

6. Function or Use

Historic Functions

(Enter categories from instructions)

SOCIAL/meeting hall

Current Functions

(Enter categories from instructions)

SOCIAL/meeting hall

7. Description

Architectural Classification

(Enter categories from instructions)

no style

Materials

(Enter categories from instructions)

foundation stone

walls wood

roof asphalt

other

Narrative Description

(Describe the historic and current condition of the property on one or more continuation sheets.)

United States Department of the Interior  
National Park Service

Fly Creek Grange No. 844  
Fly Creek, Otsego County, New York

## National Register of Historic Places Continuation Sheet

Section number 7 Page 1

---

Fly Creek Grange No 844 is located on the east side of Cemetery Road in the small hamlet of Fly Creek, Otsego County. Fly Creek is several miles northwest of Cooperstown, which occupies the south shore of Otsego Lake, in the north-central part of the county. The building is sited close to the road on an open lot. The nominated site is the parcel currently associated with the grange. This parcel includes the original small grange parcel and an adjacent parcel, once the location of a Universalist church, which was acquired in the 1920s or 30s after the church had been demolished. The church site, now a grassy plot, is outlined by mature trees on the east and south sides. Directly across the street is a large nineteenth-century cemetery.

The grange hall is a large two and one-half story wood-frame building surmounted by a gable roof. The building is rectangular in shape (30' by 80'), three bays wide by four bays long. It sits on a cut and rubble stone foundation and is clad in wooden clapboard siding. There is a narrow frieze and molded cornice. Fenestration is regular and window openings feature narrow projecting lintels and sills and contain double-hung wooden windows with two-over-two sash. The main entrance is located in the center bay of the façade at ground level. The entrance features a wide wooden enframing with a shouldered architrave and a projecting lintel. Entrance is through double doors faced with beaded-board siding laid vertically on the exterior and horizontally on the interior. There are secondary entrances on the south elevation, near the back of the building, and on the rear; each is composed of double wooden paneled doors. An exterior end chimney pierces the roof on the rear elevation. There has been one recent addition to the exterior, a small one-story pavilion near the southeast corner of the building that accommodates restrooms.

On the interior, the first floor is divided into three spaces: a small foyer at the front of the building, a small kitchen at the rear and a large open dining room in between. The foyer, which is finished in beaded-board siding, features a ticket booth within an elaborately carved opening and stairs to the second floor. A set of double doors provides access to the dining room. The dining room features a low ceiling of wall board with narrow wooden battens and exposed wooden posts with chamfered brackets. The ceiling appears to have been

See continuation sheet

United States Department of the Interior  
National Park Service

Fly Creek Grange No. 844  
Fly Creek, Otsego County, New York

## National Register of Historic Places Continuation Sheet

Section number 7 Page 2

---

lowered slightly, as the tops of the window frames are obscured. Finishes include hardwood floors and beaded-board siding; the latter is laid vertically to the chair rail and horizontally above. Lighting fixtures date from the period of significance. Windows and doors are set within molded frames with decorative corner posts.

A single paneled door on the west wall of the dining room provides access to the ticket booth, while double paneled doors on the south wall provide an exterior exit. The east wall, which separates the dining room and kitchen, features an entrance to the kitchen on the south end and a pass-through in the center. The north end of the wall is occupied by a large built-in cabinet with drawers on the bottom and cupboards above. The cupboards can be accessed both from the dining room, where they are concealed by two sets of vertical beaded-board doors, and from the kitchen, where there are three single doors. On the kitchen side, the lower portion of this cabinet features cupboards rather than drawers. Near the southeast corner of the dining room is an enormous furnace.

The kitchen is finished in vertical and horizontal beaded-board siding and contains a variety of appliances. On either end of the kitchen, original stairs provide access to the second floor. The north stairs have been enclosed by a partition and are no longer accessible from the kitchen. A small door under the stairs conceals a utility closet. Near the south stair, access has been cut into the new bathroom wing. In the southwest corner of the room a vertical board door provides access to an original four-hole privy.

The upper floor is divided into a small foyer and the main auditorium. The stair hall and foyer are entirely finished in beaded board. There are two single entrances into the auditorium, one from each side of the foyer. The auditorium is a large open space with a fourteen-foot ceiling and a stage at one end. Finishes include hardwood floors, beaded-board siding to the chair rail and plaster above (except for the rear wall, which is beaded board to the top of the doors). Window and door moldings, the ceiling, and light fixtures are all the same as those of the first floor. The proscenium is framed by wooded pilasters supporting Doric capitals. The

See continuation sheet

United States Department of the Interior  
National Park Service

Fly Creek Grange No. 844  
Fly Creek, Otsego County, New York

## National Register of Historic Places Continuation Sheet

Section number   7   Page   3  

---

frame is decorated with inset panels containing small pieces of beaded board shaped like chevrons. On either side of the stage is door leading to a set of stairs. The door and stairs on the south are narrow, utilitarian and provide access to the kitchen and privy. Those on the north are wider and feature a decorative baluster and newel post. These provide access to the exterior through the rear door. They originally provided access to the kitchen as well; however, they are now framed off on the first floor. Original chairs and other furniture remain and the original canvas curtain painted with an Otsego County scene survives and is in storage. The grange hall, virtually unchanged from its construction period, retains an outstanding level of integrity.

See continuation sheet

8 Statement of Significance

Applicable National Register Criteria

(Mark "x" in one or more boxes for the criteria qualifying the property for National Register listing.)

- A Property is associated with events that have made a significant contribution to the broad patterns of our history.
B Property is associated with the lives of persons significant in our past.
C Property embodies the distinctive characteristics of a type, period or method of construction or represents the work of a master, or possesses high artistic values, or represents a significant and distinguishable entity whose components lack individual distinction.
D Property has yielded, or is likely to yield, information important in prehistory or history.

Criteria considerations

(mark "x" in all the boxes that apply.)

Property is:

- A owned by a religious institution or used for religious purposes.
B removed from its original location.
C a birthplace or grave.
D a cemetery.
E a reconstructed building, object or structure.
F a commemorative property.
G less than 50 years of age or achieved significance within the past 50 years.

Narrative Statement of Significance

(Explain the significance of the property on one or more continuation sheets.)

9. Major Bibliographical References

Bibliography

(cite the books, articles, and other sources used in preparing this form on one or more continuation sheets.)

Previous documentation on file (NPS):

- preliminary determination of individual listing (36 CFR 67) has been requested
previously listed in the National Register
previously determined eligible by the National Register
designated a National Historic Landmark
recorded by Historic American Buildings Survey
recorded by Historic American Engineering Record #

Areas of Significance

(Enter categories from instructions)

- social history
agriculture
architecture

Period of Significance

1899

Significant Dates

1899

Significant Person

(Complete if Criterion B is marked above)

na

Cultural Affiliation

na

Architect/Builder

Charles Allen, builder

Primary location of additional data

- x State Historic Preservation Office
Other State agency
Federal agency
Local government
University
Other

Name of repository:

United States Department of the Interior  
National Park Service

Fly Creek Grange No. 844  
Fly Creek, Otsego County, New York

## National Register of Historic Places Continuation Sheet

Section number 8 Page 1

---

Fly Creek Grange No. 844 is significant for its association with agricultural and social history in the town of Otsego and as an exceptionally intact example of a grange hall, a common building type in rural New York. The Fly Creek Grange was established in 1895 and the building was constructed by local builder Charles Allen in 1899. The large rectangular building is similar to other granges in its two-story form, modest decoration and functional design, including a large kitchen/dining area on the first floor and an auditorium with stage on the second floor. As with similar organizations, the Fly Creek grange served the agricultural community by sponsoring social and educational programs, as well as by extending the benefits of cooperative investment to individual farmers. In form and materials, the building is similar to other regional agricultural buildings and fits harmoniously into the rural landscape.

### Town of Otsego

Otsego is an interior town located in the center of Otsego County. It is characterized by hilly uplands generally divided by Fly Creek, which flows north-south through the center of the town. CR 26, which follows the path of the creek, serves as one of the primary transportation routes through the town. The town of Otsego was formed as part of Montgomery County in 1788 and originally included a large part of what is now the county of Otsego. By 1810 the towns of Burlington, Richfield, Unadilla and Hartwick had separated. The earliest settlement of the Fly Creek area dates to the late eighteenth century and the hamlet was settled in the early nineteenth century as mill community. At least seven mills were located along the creek within a mile of the hamlet and a number of products were exported. The crossroads community developed as the location for worker housing, shops, churches, and other services needed to support its industrial concerns and serve outlying agricultural areas. In 1860, French's gazetteer recorded three churches, several industrial buildings, and sixty houses in the hamlet. Although the mills do not survive, the small hamlet retains a distinctive group of commercial, religious and residential buildings.

See continuation sheet

United States Department of the Interior  
National Park Service

Fly Creek Grange No. 844  
Fly Creek, Otsego County, New York

## National Register of Historic Places Continuation Sheet

Section number   8   Page   2  

---

As is typical in the county, the irregular hills, deep valley bottoms, and thin, rocky soil that characterize the town of Otsego created an excellent environment for dairy farming, which formed the mainstay of its agricultural economy in the nineteenth and early twentieth centuries. The only rival to dairy farming was hops farming, which dominated local agricultural activity in the second half of the nineteenth century. Many dairy farmers also raised a few acres of hops to supplement their incomes, while others turned completely to hops production, and Otsego County became one of the largest producers of hops in the nation. In the early twentieth century, however, a deadly blight wiped out the hops crop in the county and the industry never recovered.

### The Grange

The National Grange of the Patrons of Husbandry was founded in 1867 by Oliver Kelley of the U.S. Bureau of Agriculture. Kelley, a mason, and six others saw the need for a social and fraternal organization similar to the masons to serve as a basis for education and communication among farmers and to provide a vehicle through which farmers could express their concerns with a single voice. In the context of the post-Civil War period, Kelley also believed that this organization could stimulate information sharing between northern and southern farmers, thus helping the south to recover from the devastation left by the war. The organization that Kelley created was patterned after the masons with rituals and levels of membership and organized into local units called granges.

Granges were active in many political and social issues that concerned agriculture and became a powerful force in politics during the late nineteenth and early twentieth centuries. The grange played a major role in bringing about rural electrification and railroad and grain elevation safety laws. Grangers also espoused women's suffrage, and women were equal members of grange business concerns. Granges established cooperative farm implement factories, elevators, creameries, and general stores. They experimented with purchasing agencies and cooperative selling and formed insurance companies that still exist today. As other political organizations

See continuation sheet

United States Department of the Interior  
National Park Service

Fly Creek Grange No. 844  
Fly Creek, Otsego County, New York

## National Register of Historic Places Continuation Sheet

Section number   8   Page   3  

---

took up many of its causes, the grange movement reverted to its first goals of providing education and social interaction among farm families. In many rural communities the grange was the primary social outlet.

The grange movement in Otsego County dates to 1886, with the formation of the first local grange in Elk Creek. In 1902, there were fifteen local granges (with approximately sixty charter members) linked under a county-wide Pomona Grange. By the 1920s there were over two dozen granges in the county, with Fly Creek one of the largest. In his *Otsego County Geographical and Historical* (1902), Edwin Bacon provided a concise description of the grange program in Otsego County:

Its objects are educational, financial and social. It insures farm property, advocates good roads, and has been influential in the establishment of free rural mail delivery. Meetings are held every two weeks for the discussion of topics pertaining to the interests of farmers. The state gives to each grange, on application, an agricultural library of 100 volumes. The membership in Otsego County numbers 665 and consists of farmers and their families.

### Fly Creek Grange

The Fly Creek Grange No. 844 was established in February 1895 and served the three small hamlets Fly Creek, Oaksville, and Toddsville and their environs in the southern part of the town of Otsego. The first meetings were held in the ballroom of the Fly Creek Hotel, but the eighteen charter members quickly decided to build a hall of their own. "Members of the Grange donated time and labor, and the organization soon had one of the largest and finest halls in Otsego County."<sup>1</sup> On 16 June 1899 the *Otsego Farmer* reported that "the foundation for the Grange has been laid and Charles Allen of Pierstown is now engaged in framing the building in which everyone appears interested and anxious to see completed." By 1928 the Fly Creek grangers had paid off all the building expenses and owned the hall free and clear.

---

<sup>1</sup> *History of Otsego County Granges* (Worcester, NY: n.p., 1972).

United States Department of the Interior  
National Park Service

Fly Creek Grange No. 844  
Fly Creek, Otsego County, New York

## National Register of Historic Places Continuation Sheet

Section number 8 Page 4

---

The Fly Creek hall was constructed with a form and layout typical of granges across the state. The two-story rectangular building is divided into three major spaces: dining room, kitchen and second floor auditorium. On the exterior, the modest wood-frame building is distinguished by its substantial size; however, its form, materials, and embellishment resemble other agricultural buildings of the region. On the inside, the building's plan and appearance are dictated by its function. In addition to the spatial divisions, the design incorporates features such as a ticket booth, built-in cabinets and stage equipment. Finishes, such as moldings and beaded-board siding are typical for the period. Just as the building's design is characteristic of its type, so its use has also been typical. The Fly Creek grangers used it for local and regional meetings, farmers' education programs, dinners, dances, and other social events. It also served as a distribution center for seeds, equipment, and dry goods purchased cooperatively and sold to grangers and others. Apart from grange functions, the hall quickly became a social hub for the hamlet of Fly Creek and the surrounding area, providing the venue for theatrical performances, benefit dinners, and political caucuses and rallies. During the Depression, the grange hosted programs by itinerate vaudeville groups, and for many years it served as the local polling place.

By 1998, farming had declined greatly in Otsego County and with it the number of active granges, which numbered about a dozen. The Fly Creek Grange met only once a year and the building was otherwise used for storage. Subsequently, the building was sold to the Fly Creek Historical Society for use as a meeting place and archival center. A small addition was constructed to house modern bathrooms and the society is planning further renovations to meet contemporary needs. The building survives with a remarkable degree of integrity and has already reclaimed its place as a center of community life in the hamlet.

See continuation sheet

United States Department of the Interior  
National Park Service

Fly Creek Grange No. 844  
Fly Creek, Otsego County, New York

## National Register of Historic Places Continuation Sheet

Section number   9   Page   1  

---

### Bibliography

Atwell, Jim. "From Fly Creek." *Cooperstown Crier*. 28 Jan 1999 - 29 March 2001.

Bacon, Edwin. *Otsego County Geographical and Historical*. n.p., 1902.

French, J.W. "Otsego County." *Gazetteer of the State of New York*. Syracuse: R. Pearsall, 1980.  
<http://www.rootsweb.com/~nyotsego/frotsego.htm>.

*History of Otsego County*. n.p., 1878.

*History of Otsego County Granges*. Worcester, N.Y.; n.p., 1972.

LaFrank, Kathleen. "Smithville Valley Grange No. 1397." National Register of Historic Places Nomination, 1998.

*Otsego Farmer*. 16 June 1899.

Fly Creek Grange No. 844

Name of Property

Otsego County, New York

County and State

**10. Geographical Data**

**Acreage of property** less than one acre

**UTM References**

(Place additional UTM references on a continuation sheet.)

1	18	501330	4729150	3			
	<i>Zone</i>	<i>Easting</i>	<i>Northing</i>		<i>Zone</i>	<i>Easting</i>	<i>Northing</i>
2				4			

See continuation sheet

**Verbal Boundary Description**

(Describe the boundaries of the property on a continuation sheet.)

**Boundary Justification**

(Explain why the boundaries were selected on a continuation sheet.)

**11. Form Prepared By**

name/title Kathleen LaFrank, Program Analyst

organization New York State Historic Preservation Office date July 2003

street & number Peebles Island State Park, Box 189 telephone 518-237-8643 x 3261

city or town Waterford state New York zip code 12188

**Additional Documentation**

Submit the following items with the completed form:

**Continuation Sheets**

**Maps**

- A **USGS map** (7.5 or 15 minute series) indicating the property's location.
- A **Sketch map** for historic districts and properties having large acreage or numerous resources.

**Photographs**

Representative **black and white photographs** of the property.

**Additional items**

(Check with the SHPO or FPO for any additional items)

**Property Owner**

(Complete this item at the request of the SHPO or FPO.)

name Fly Creek Historical Society

street & number \_\_\_\_\_ telephone \_\_\_\_\_

city or town \_\_\_\_\_ state \_\_\_\_\_ zip code \_\_\_\_\_

**Paperwork Reduction Act Statement:** This information is being collected for applications to the National Register of Historic Places to nominate properties for listing or determine eligibility for listing, to list properties and to amend existing listings. Response to this request is required to obtain a benefit in accordance with the National Historic Preservation Act, as amended (16 U.S.C.470 *et seq.*)

**Estimated Burden Statement:** Public reporting burden for this form is estimated to average 18.1 hours per response including time for reviewing instructions, gathering and maintaining data and completing and reviewing the form. Direct comments regarding this burden estimate or any aspect of this form to the Chief, Administrative Services Division, National Park Service, P.O. Box 37127, Washington, DC 20013-7127; and the Office of Management and Budget, Paperwork Reductions Projects (1024-0018), Washington, DC 20503.

United States Department of the Interior  
National Park Service

Fly Creek Grange No. 844  
Fly Creek, Otsego County, New York

## National Register of Historic Places Continuation Sheet

Section number 10 Page 1

---

### Verbal Boundary Description

The boundary is indicated by a heavy line on the enclosed tax map with scale.

### Boundary Justification

The boundary was drawn to include the current parcel associated with the grange. This includes the original grange parcel and an adjacent parcel, once the site of a Universalist church, which was purchased during the 1920s or 30s, after the church had been demolished.

See continuation sheet

United States Department of the Interior  
National Park Service

Fly Creek Grange No. 844  
Fly Creek, Otsego County, New York

## National Register of Historic Places Continuation Sheet

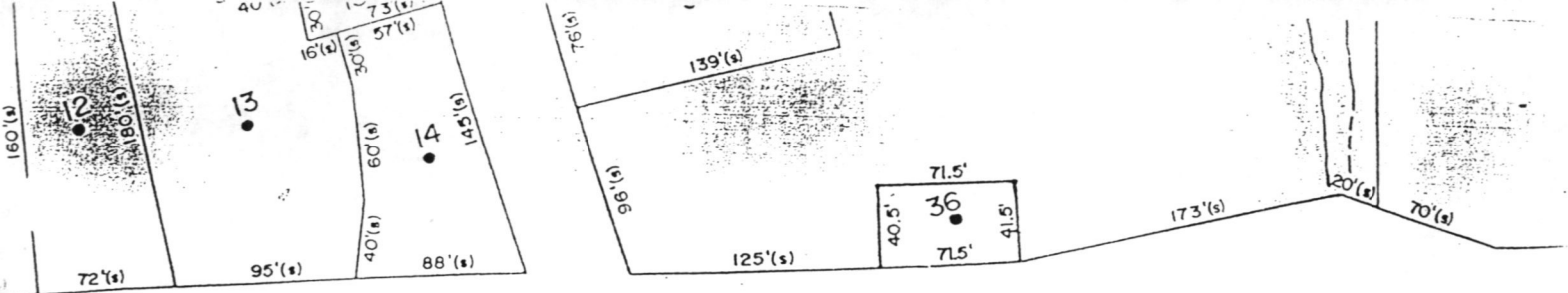
Section number   11   Page   1  

---

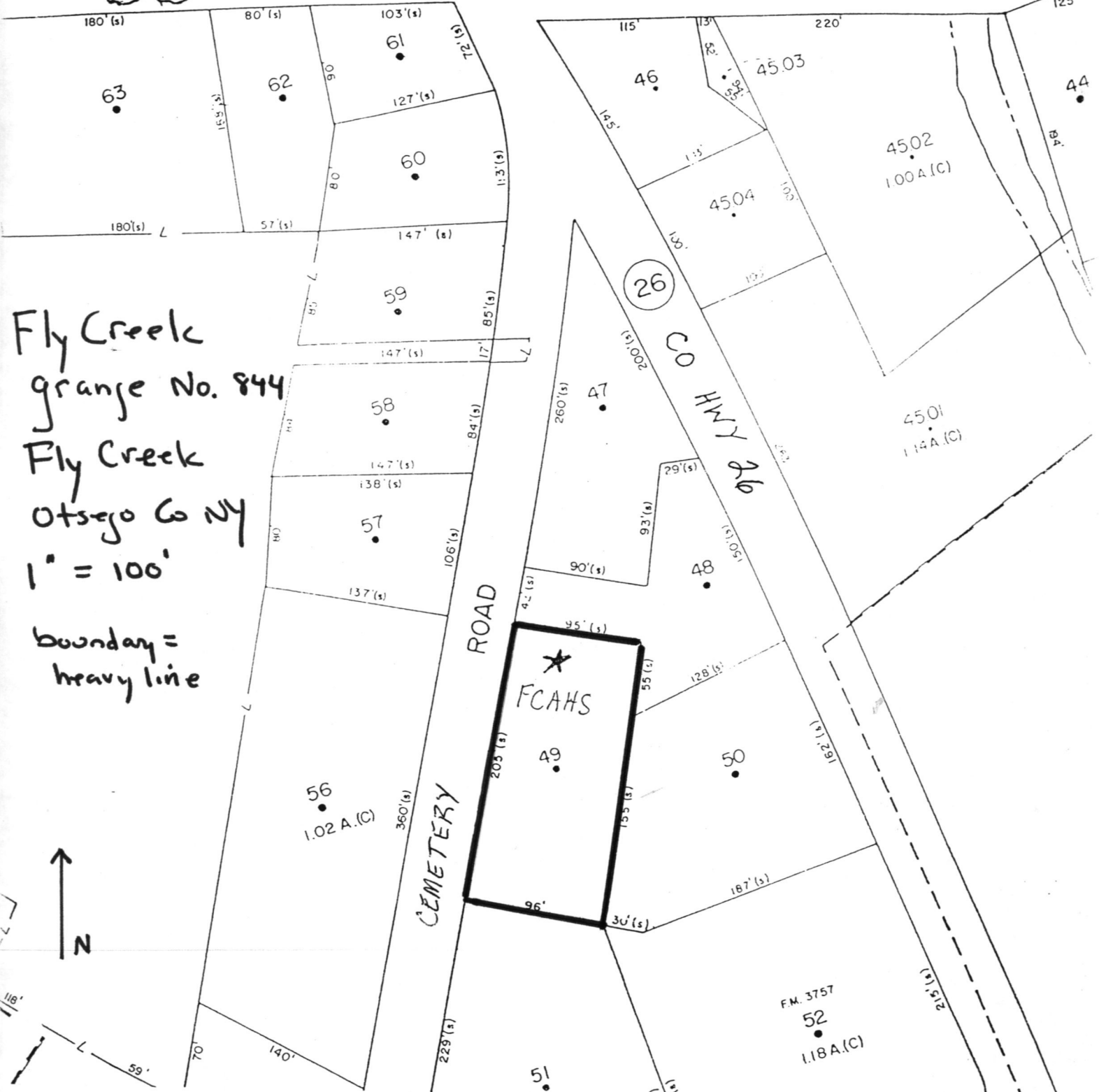
Research and draft nomination prepared by:

James F. Wolf and James Atwell  
Fly Creek Historical Society  
PO Box 87  
Fly Creek, NY 13337

See continuation sheet



**80 28 ST HWY**



Fly Creek  
 Grange No. 844  
 Fly Creek  
 Otsego Co NY  
 1" = 100'  
 boundary = heavy line



OTSEGO COUNTY  
 TOWN OF OTSEGO  
 HAMLET OF FLY CREEK

**United States Department of the Interior  
National Park Service**

**National Register of Historic Places  
Continuation Sheet**

Section number \_\_\_\_\_ Page \_\_\_\_\_

**SUPPLEMENTARY LISTING RECORD**

NRIS Reference Number: 04000097

Date Listed: 02/25/04

Fly Creek Grange No. 844  
Property Name

Otsego  
County

NY  
State

N/A  
Multiple Name

This property is listed in the National Register of Historic Places in accordance with the attached nomination documentation subject to the following exceptions, exclusions, or amendments, notwithstanding the National Park Service certification included in the nomination documentation.

  
Signature of the Keeper

2/25/04  
Date of Action

Amended Items in Nomination:

8. Statement of Significance: Period of Significance

The justified period of significance for this property's historical and architectural significance under criteria A and C is 1899-1954.

This information has been confirmed with NYSHPO staff by telephone.

DISTRIBUTION:

- National Register property file
- Nominating Authority (without attachment)

UNITED STATES DEPARTMENT OF THE INTERIOR  
NATIONAL PARK SERVICE

NATIONAL REGISTER OF HISTORIC PLACES  
EVALUATION/RETURN SHEET

REQUESTED ACTION: NOMINATION

PROPERTY NAME: Fly Creek Grange No. 844

MULTIPLE NAME:

STATE & COUNTY: NEW YORK, Otsego

DATE RECEIVED: 1/12/04 DATE OF PENDING LIST:  
DATE OF 16TH DAY: DATE OF 45TH DAY: 2/25/04  
DATE OF WEEKLY LIST:

REFERENCE NUMBER: 04000097

REASONS FOR REVIEW:

APPEAL: N DATA PROBLEM: N LANDSCAPE: N LESS THAN 50 YEARS: N  
OTHER: N PDIL: N PERIOD: N PROGRAM UNAPPROVED: N  
REQUEST: N SAMPLE: N SLR DRAFT:  NATIONAL: N

COMMENT WAIVER: N

ACCEPT  RETURN  REJECT \_\_\_\_\_ DATE

ABSTRACT/SUMMARY COMMENTS:

RECOM./CRITERIA Accept etc  
REVIEWER Savage DISCIPLINE Architectural History  
TELEPHONE \_\_\_\_\_ DATE 2/25/04

DOCUMENTATION see attached comments Y/N see attached SLR Y/N

If a nomination is returned to the nominating authority, the nomination is no longer under consideration by the NPS.



Fly Creek grange No. 844

Fly Creek, Otsego Co., NY

photo: K. LaFrank 8/2003

neg: NYSHPD

view: facade looking  
northeast

#1

A



Fly Creek Grange No. 844

Fly Creek Otsego Co. NY

photo/ing: K. WARRICK, 8, 2003  
NYSHPG

View: lobby + ticket booth

#2



Fly Creek Grange No. 844

Fly Creek, Otsego Co. NY

photo: K. LaFrank 8, 2003

neg: NYSHPD

view: 1st floor dining room +  
kitchen to the rear



#3



Fly Creek Grange No 844

Fly Creek, Otsego Co. NY

photo: k. LaFrank 8, 2003

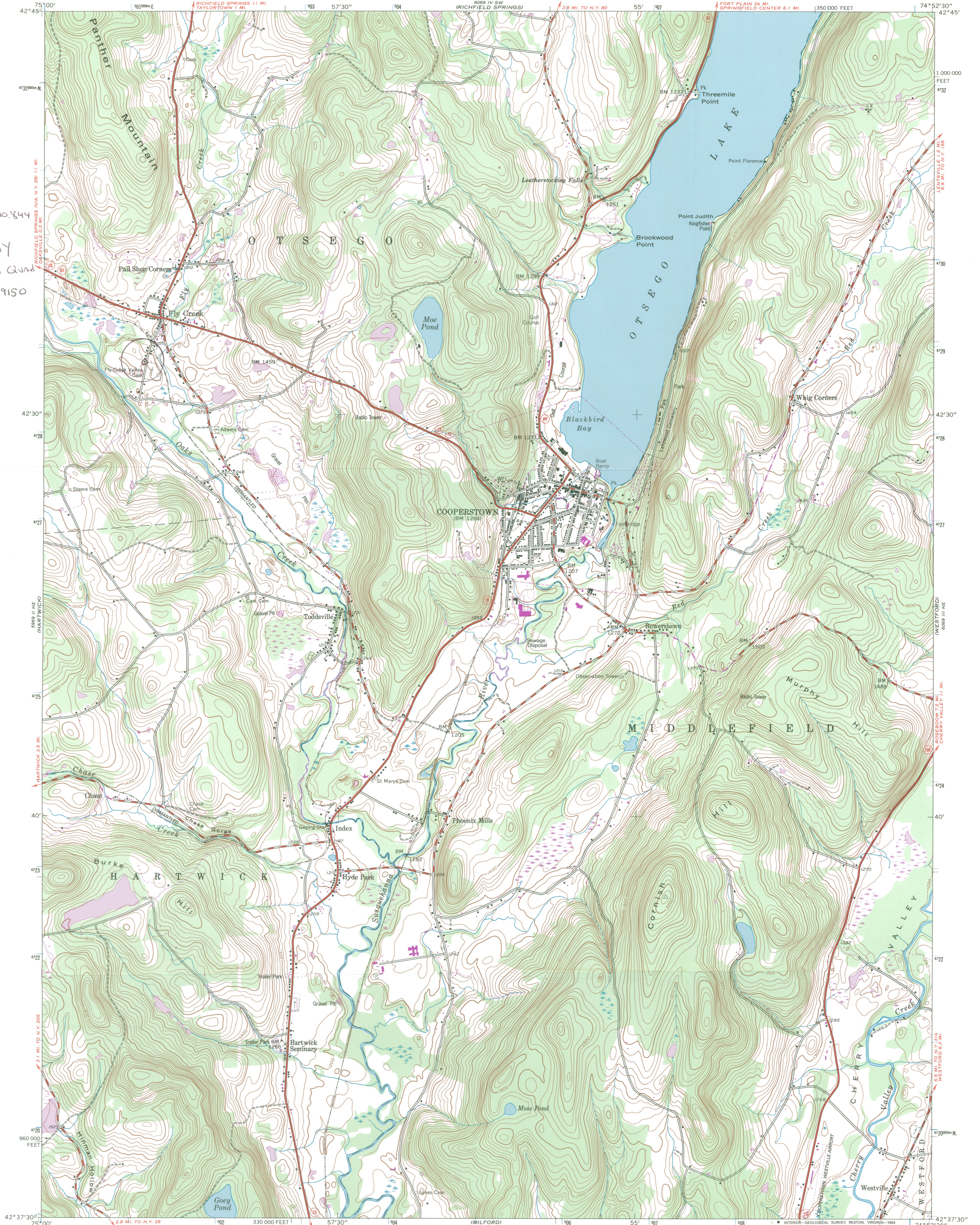
neg: NYSHPD

View: 2nd floor auditorium

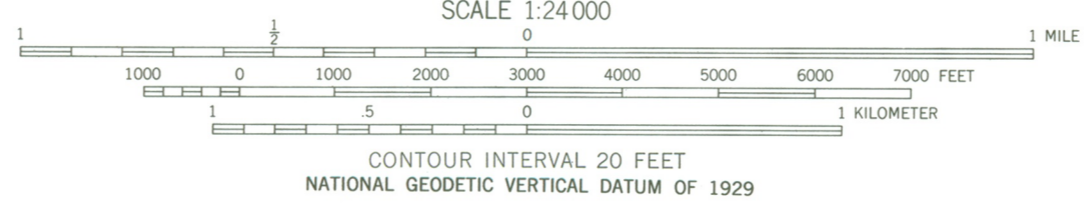
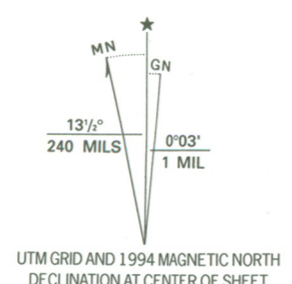
#4



Fly Creek  
Grange No. 844  
Fly Creek  
Otsego Co NY  
Cooperstown Quad  
18/501330/4729150



Mapped by the Army Map Service  
Revised by the U.S. Geological Survey  
Control by USGS, NOS/NOAA and TVA  
Topography by photogrammetric methods from aerial photographs taken 1942. Field checked 1943.  
Projection and 10,000-foot grid ticks: New York coordinate system, east zone (transverse Mercator)  
1000-meter Universal Transverse Mercator grid ticks, zone 18, shown in blue 1927 North American Datum (NAD 27)  
North American Datum of 1983 (NAD 83) is shown by dashed corner ticks  
The values of the shift between NAD 27 and NAD 83 for 7.5-minute intersections are given in USGS Bulletin 1875



CONTOUR INTERVAL 20 FEET  
NATIONAL GEODETIC VERTICAL DATUM OF 1929

ROAD CLASSIFICATION

Primary highway, hard surface	Light-duty road, hard or improved surface
Secondary highway, hard surface	Unimproved road
Interstate Route	U.S. Route
	State Route

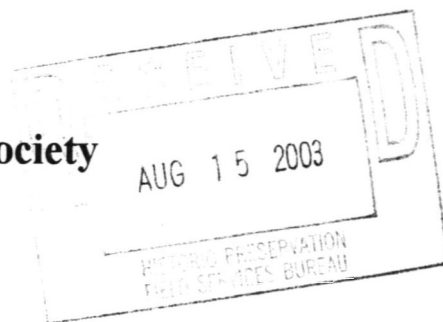


COOPERSTOWN, N.Y.

42074-F8-TF-024  
1943  
REVISED 1994  
DMA 6069 III NW - SERIES V821

COMPLIES WITH U.S. GEOLOGICAL SURVEY STANDARDS FOR SPATIAL ACCURACY - CLASS 2  
FOR SALE BY U.S. GEOLOGICAL SURVEY, DENVER, COLORADO 80225, OR RESTON, VIRGINIA 22092  
A FOLDER DESCRIBING TOPOGRAPHIC MAPS AND SYMBOLS IS AVAILABLE ON REQUEST

**Fly Creek Area Historical Society**  
**P O Box 87**  
**Fly Creek, NY 13337**



August 13, 2003

Ms. Kathleen LaFrank  
Historic Preservation Field Services Bureau  
Peebles Island State Park  
P O Box 189  
Waterford, NY 12188-0189

Re: Listing on State and National Registries of the Fly Creek Grange Hall owned by the Fly Creek Area Historical Society

Dear Ms. LaFrank:

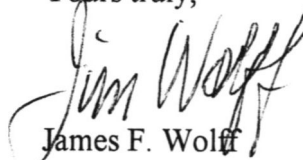
Enclosed is a copy of the tax map showing the parcel owned by the Fly Creek Historical Society on which the Fly Creek Grange building is located.

Also enclosed is additional historical material about our county, our town, and the Grange and the important part agriculture played in our community. This material was compiled by former Historical Society President, James Atwell and myself.

Finally, you will find enclosed a letter of support adopted by the Board of Trustees of the Historical Society at our meeting of August 12, 2003.

Once again, I wish to thank you for your assistance in obtaining 'listing' for our historic building.

Yours truly,

  
James F. Wolff  
Trustee Chairman

JFW/dc  
cc: J. Atwell

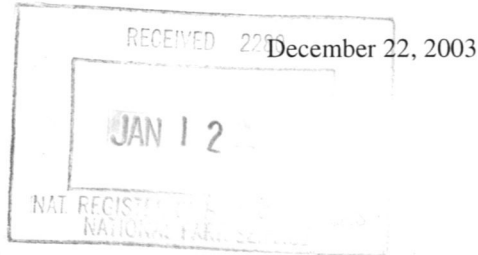


**New York State Office of Parks, Recreation and Historic Preservation**  
Historic Preservation Field Services Bureau  
Peebles Island, PO Box 189, Waterford, New York 12188-0189

518-237-8643

Bernadette Castro  
Commissioner

Ms. Alexis Abernathy  
National Park Service  
National Register of Historic Places  
1201 Eye St. NW  
8<sup>th</sup> Floor  
Washington, D.C. 20005



Re: Transmittal of National Register  
Nominations

Dear Ms. Abernathy:

I am pleased to transmit three new National Register nominations to be considered for listing by the Keeper of the National Register as follows:

Gardner Earl Memorial Chapel and Crematorium, Troy, Rensselaer Co., NY

District School 2, Coventryville, Chenango Co., NY

Fly Creek Grange, Fly Creek, Otsego Co., NY

Thank you for your assistance in processing these proposals. Please feel free to call on me at 518-237-8643 ext. 3258 if any questions arise.

Sincerely,

Mark L. Peckham  
National Register  
Program Coordinator

enclosures