

United States Department of the Interior
National Park Service

1399



National Register of Historic Places Registration Form

This form is for use in nominating or requesting determinations of eligibility for individual properties or districts. See instructions in *How to Complete the National Register of Historic Places Registration Form* (National Register Bulletin 16A). Complete each item by marking "x" in the appropriate box or by entering the information requested. If an item does not apply to the property being documented, enter "N/A" for "not applicable." For functions, architectural classification, materials and areas of significance, enter only categories and subcategories listed in the instructions. Place additional entries and narrative items on continuation sheets (NPS Form 10-900a). Use a typewriter, word processor, or computer, to complete all items.

1. Name of Property

historic name Hobart Masonic Hall
other names/site number Hobart Historical Center

2. Location

street & number 6 Cornell Avenue not for publication
city or town Hobart vicinity
state New York code NY county Delaware code 025 zip code 13788

3. State/Federal Agency Certification

As the designated authority under the National Historic Preservation Act, as amended, I certify that this nomination request for determination of eligibility meets the documentation standards for registering properties in the National Register of Historic Places and meets the procedural and professional requirements set forth in 36 CFR Part 60. In my opinion, the property meets does not meet the National Register criteria. I recommend that this property be considered significant nationally statewide locally. See continuation sheet for additional comments.

William Carter SAPO 10/15/01
Signature of certifying official/Title Date

State or Federal agency and bureau

In my opinion, the property meets does not meet the National Register criteria. See continuation sheet for additional comments.

Signature of certifying official/Title Date

State or Federal agency and bureau

4. National Park Service Certification

I hereby certify that this property is:

entered in the National Register. See continuation sheet.

determined eligible for the National Register. See continuation sheet.

determined not eligible for the National Register.

removed from the National Register.

other, (explain:)

Edson H. Beal 12/28/01
Signature of the Keeper Date of Action

Hobart Masonic Hall

Name of Property

Delaware County, New York

County and State

5. Classification

Ownership of Property
(Check as many boxes as apply)

- private
- public-local
- public-State
- public-Federal

Category of Property
(Check only one box)

- building(s)
- district
- site
- structure
- object

Number of Resources within Property
(Do not include previously listed resources in the count.)

Contributing	Noncontributing	
1	0	buildings
0	0	sites
0	0	structures
0	0	objects
1	0	Total

Name of related multiple property listing
(Enter "N/A" if property is not part of a multiple property listing.)

N/A

Number of contributing resources previously listed in the National Register

0

6. Function or Use

Historic Functions
(Enter categories from instructions)

SOCIAL/meeting hall

DOMESTIC/multiple dwelling

Current Functions
(Enter categories from instructions)

EDUCATION/library

7. Description

Architectural Classification
(Enter categories from instructions)

Stick Style

Materials
(Enter categories from instructions)

foundation stone

walls wood

roof fiberglass/ asbestos

other

Narrative Description

(Describe the historic and current condition of the property on one or more continuation sheets.)

United States Department of the Interior
National Park Service

Hobart Masonic Hall
Hobart, Delaware County, New York

National Register of Historic Places Continuation Sheet

Section number 7 Page 1

The Hobart Masonic Hall (now Hobart Historical Society) is located in the small Delaware County village of Hobart. Hobart straddles the West Branch of the Delaware River in the northeastern quadrant of the county. The village is within a ten-mile corridor (from Bloomville to Hobart) of the Delaware River Valley that has been determined eligible for listing on the National Register as a rural historic district. The district is characterized by a concentration of historic farms and villages marked by an extremely intact pattern of historic land divisions and uses. A comprehensive district proposal would probably also include a corresponding set of resources on the east side of the river. Each side of the river is defined by long and narrow farm lots extending from the river to the steep mountain ridges that define the valley. The Masonic Hall occupies a small parcel on the north side of Cornell Avenue, just east of its intersection with Main Street (NY 10). NY 10 parallels the river and is the primary north-south route through the valley.

The Hobart Masonic Hall is a two and one-half story wood-frame building on a rubble stone foundation. The building is rectangular in shape with a small cross-gabled wing on the west elevation. The steep cross-gabled roof features a deep overhang and a decorative wooden vergeboard. The roof is now covered in fiberglass/asbestos shingles. On the front gable, the apex is filled in, creating a shallow hood over the gable window. This small window is glazed in a single, large colored glass pane within a frame of smaller colored glass panes. The building is clad in a mixture of wooden clapboard and decorative shingles. Shingle courses mark the division between first and second stories and are used in the front, side and rear gables. The front and side gables are the most elaborately embellished elements of the exterior. Gable ends are sided in vertical and horizontal flat board siding and a variety of decorative shingles. The most interesting embellishments reflect the building's use as a Masonic Hall. Applied wooden ornamentation on the façade gable includes a hammer, ruler, plumb rule, builder's square, French curves and a trowel (the trowel is actually a real tool), as well as the initials "F & A M." The side gable is also defined by a decorative vergeboard and applied decoration, including an anchor.

See continuation sheet

National Register of Historic Places Continuation Sheet

Section number 7 Page 2

Fenestration is spare, regular and symmetrical. Window and door openings are tall and narrow. Windows are generally one-over-one sash within narrow flat frames with simple lintels and sills. On the façade, two identical entrances frame a single window. Each entrance features a wooden panel and glass door, wrought-iron rail and brownstone steps. The name of the lodge is cut into the steps to the north entrance, which accesses the lodge. A shallow shed-roofed hood shelters the entrances. On the east side elevation, the cross-gabled wing is supported by a wooden porch with turned posts. A narrow entrance door provides access to the side of the building.

The interior is divided into smaller rooms on the first floor and a large meeting room that fills most of the second floor. Entrance through the eastern door provides access to the first floor rooms, while the western door leads to a small hallway and a stair directly to the second floor meeting room. The cherry wood stair features carved Victorian-era posts and newels. There is an internal passage between the stair hall and the first floor rooms. The first floor is now divided onto a large work room at the front of the building and three small rooms at the rear. This plan reflects later alterations; however, their period is unknown. Originally, the first floor was divided into rooms used for lodging; however, later uses are said to have included offices and a theater. The small chamber in the southwest corner (now partitioned for a furnace room) is the only space to retain period finishes. In other spaces, partitions have been added or removed and original finishes are covered with non-historic materials.

The second floor is divided into the lodge room and several smaller chambers. The lodge room is a long rectangular space and occupies most of the second floor. It has a flat ceiling; however, there is a large recessed cove over the center of the room. Walls are plaster over lath. Windows light the west side of the room and three doors provide access to small chambers on the east and north. Window and door moldings feature carved Masonic symbols. Original grain painting on the doors survives, but similar painting on the trim has been painted over. A single chandelier hangs from the middle of the room, small light fixtures project from the ceiling and decorative sconces line the walls. Much of this lighting dates to the historic period. The wooden

See continuation sheet

United States Department of the Interior
National Park Service

Hobart Masonic Hall
Hobart, Delaware County, New York

National Register of Historic Places Continuation Sheet

Section number 7 Page 3

floor has been carpeted. A significant amount of original oak furniture survives. At the north end of the room, a small platform holds three ceremonial chairs, while a variety of other chairs and benches line the walls. At the south end of the second floor are the stair hall and two small chambers. Walls are plaster over lath, papered and then painted. Original grain painting survives on the doors but has been painted over. One of these rooms was apparently used as a coat room. On the east wall, over the side porch, another small room retains historic finishes, including a grain-painted door, Celtic knot wallpaper and a small cabinet. This room was probably used to store costumes, manuals, etc. There is a small room located in the half-story in the front gable of the building. This room retains original finishes and a grain-painted door. Its original function is unknown.

The Hobart Masonic Hall is a well-preserved example of its period and type. Except for the non-historic alterations to the first floor space, the building retains an outstanding level of integrity, retaining evidence of style, function, and program.

See continuation sheet

8 Statement of Significance

Applicable National Register Criteria

(Mark "x" in one or more boxes for the criteria qualifying the property for National Register listing.)

- A Property is associated with events that have made a significant contribution to the broad patterns of our history.
B Property is associated with the lives of persons significant in our past.
C Property embodies the distinctive characteristics of a type, period or method of construction or represents the work of a master, or possesses high artistic values, or represents a significant and distinguishable entity whose components lack individual distinction.
D Property has yielded, or is likely to yield, information important in prehistory or history.

Criteria considerations (mark "x" in all the boxes that apply.)

Property is:

- A owned by a religious institution or used for religious purposes.
B removed from its original location.
C a birthplace or grave.
D a cemetery.
E a reconstructed building, object or structure.
F a commemorative property.
G less than 50 years of age or achieved significance within the past 50 years.

Narrative Statement of Significance

(Explain the significance of the property on one or more continuation sheets.)

9. Major Bibliographical References

Bibliography

(cite the books, articles, and other sources used in preparing this form on one or more continuation sheets.)

Previous documentation on file (NPS):

- preliminary determination of individual listing (36 CFR 67) has been requested
previously listed in the National Register
previously determined eligible by the National Register
designated a National Historic Landmark
recorded by Historic American Buildings Survey
recorded by Historic American Engineering Record

Areas of Significance

(Enter categories from instructions)

social history
architecture

Period of Significance

1889

Significant Dates

1889

Significant Person

(Complete if Criterion B is marked above)

na

Cultural Affiliation

na

Architect/Builder

unknown

Primary location of additional data

- x State Historic Preservation Office
Other State agency
Federal agency
Local government
University
Other

Name of repository:

United States Department of the Interior
National Park Service

Hobart Masonic Hall
Hobart, Delaware County, New York

National Register of Historic Places Continuation Sheet

Section number 8 Page 1

The Hobart Masonic Hall is significant in the areas of social history and architecture as a representative intact example of a Masonic lodge in Delaware County and a distinctive example of Stick style design. Constructed in 1889, the building was erected for St. Andrew's Lodge, F. & A. M. Chartered in 1796, St. Andrew's lodge was one of the first Masonic lodges in Delaware County. Beginning in the late eighteenth century, Freemasonry played an important role in rural Delaware County. The masons were generally active in Hobart throughout the nineteenth century, meeting in private homes, a building on Main Street, a school and at least one other building constructed specifically for their use. In 1887, St. Andrew's Lodge set out to purchase land and construct a new building. Funds were borrowed from members and raised through various other lodge activities. The building, most likely built by members, was completed in 1889. In design the building accommodates the specific functional needs of the lodge and embodies features characteristic of the Stick style. Particularly noteworthy is the applied wooden ornamentation in the front gable, which depicts a selection of tools associated with Freemasonry.

Hobart

Hobart is laid out on both sides of West Branch of the Delaware River, four miles south of the village of Stamford. Hobart's location at a waterfall provided an excellent opportunity for industrial development, and its original name, "Waterville," reflected that aspect of village history. The small village was originally part of the Hardenbergh Patent; however, after the original patentees failed to maintain ownership, the Bradt Patent was created in 1740. Hobart was settled prior to the Revolution; at that time, county boundaries met at the Delaware River and the village was divided. The town of Stamford (which includes Hobart) was formed in 1792. When Delaware County was formed in 1797 (from parts of Ulster and Otsego counties), it encompassed land on both sides of the river and included both the town and the village. Settlement of Hobart was disrupted by the war but resumed shortly thereafter. By 1783, two dams had been constructed at Hobart, and by 1800 a number of industries were in operation. Industrial concerns during the nineteenth century included a carding mill, grist mill, distillery, blacksmith shop, saw mill, furnace, trip hammer shop and tanneries. Among these was what is believed to be the country's first cut-nail factory, which produced square headed nails. Although the site is

See continuation sheet

United States Department of the Interior
National Park Service

Hobart Masonic Hall
Hobart, Delaware County, New York

National Register of Historic Places Continuation Sheet

Section number 8 Page 2

known, the factory no longer survives. By 1880, the population was approximately four hundred and the village was served by three churches, a school, at least three hotels, two banks and various commercial and industrial concerns. Like Bloomville to the south, Hobart also served as a service community for the surrounding agricultural community, an unbroken chain of farms that defines the landscape of the Delaware River Valley in the ten-mile corridor between Bloomville and Hobart. In 1872, the Ulster and Delaware Railroad, which extended northwest from Kingston (on the Hudson River) to Oneonta, reached the Delaware River Valley, with stops at Stamford, Hobart, South Kortright and Bloomville. The railroad was extremely important in the late nineteenth century history of the region. In providing an efficient way to transport fresh milk and dairy products to the demanding New York City markets, the railroad was a major catalyst in sustaining agriculture as the region's economic base.

Masonic History

Masonic lodges existed in the colonies during the early eighteenth century, as Benjamin Franklin's *Pennsylvania Gazette* mentioned them as early as 1730. After the Revolution, the former colonial lodges sought independence from English lodges and General George Washington was recommended as grand master. The proposal for a general grand lodge was abandoned at his death. Freemasonry was established in New York as early as 1781, when the Grand Lodge of the State of New York was instituted. The latter had the power to establish lodges of minor degrees and grant charters. By 1800, ninety-one lodges were enrolled and active in New York, with a total membership of 5,000. In Delaware County, records indicate that nine lodges were established between 1801 and 1820; however, several predate this group. Stamford had two early chapters: St. Andrew's Chapter No. 14, chartered in 1789, and St. Andrew's Mark Masters' Lodge No. 48, established in 1798.

Just prior to the major nineteenth-century wave of anti-Masonic sentiment, 502 lodges existed in New York State; however, 430 surrendered their charters as a result of persecution, possibly to prevent discord in the community and among the families of members. The anti-Masonic persecution was the worst in the western

See continuation sheet

United States Department of the Interior
National Park Service

Hobart Masonic Hall
Hobart, Delaware County, New York

National Register of Historic Places Continuation Sheet

Section number 8 Page 3

part of the state between 1826 and 1845. At this time, the Masons fell into disrepute and were violently attacked; in one notorious case, this led to a murder. Later, the Masons were troubled by those who sought to involve them in the politics of the Civil War, which was resisted by Masonic leaders. By this time, the Masons began to concentrate on caring for the sick and wounded, a legacy that is reflected in Masonic activities today.

St. Andrew's Lodge No. 289

The Hobart lodge is one of the oldest in Delaware County. St. Andrew's Lodge, F. and A. M. was chartered on 12 April 1796 as Lodge No. 48. The first by-laws were recorded on 26 December 1796. Andrew Beers was the first master, while John French served as senior warden and James Laughran as junior warden. The lodge number was later changed to 45. In the early 1830s, lodge meetings were suspended, in part due to the strong contemporary anti-Masonic sentiment; subsequently, in 1832, the charter was forfeited, possibly for not making returns to the Grand Lodge. The old warrant of St. Andrew's Lodge was returned to the Grand Lodge on 11 August 1852, and on 4 September of that year, a dispensation was issued to form a lodge at Hobart. On 8 June 1853, a warrant was issued as St. Andrew's Lodge, F. & A. M., No. 289.

The first meetings of the lodge were held at the home of Andrew Beers. The Beers residence stood within the enclosure of the new cemetery recently developed in the southeastern part of the village. A history of St. Andrew's lodge prepared by Bortle H. Morrison in 1953 cites Griffen's *History of Stamford* in saying that "sometime after the organization of the Lodge, the members erected a hall on elevated ground near the Episcopal Church in Hobart, the second story of which was used for the main Lodge rooms, and the town meetings...were held in the lower room from 1820 to 1832." Alexander McLean of Stamford described the structure as a plain, unpainted wood-frame building, noting that its lower rooms had no floor. Wheeler Taylor stated that the original site of the building was thirty to forty feet behind St. Peter's Church, at the western end of the church sheds. This building was later moved by Abram Silliman to a site on Maple Avenue, where it was owned and occupied by C. A. Hanford as a "tenement" on the southeasterly side of his residence (Maple Street, near the railroad). Masons also reportedly met at upstairs at the Waterville Academy until that building burned.

See continuation sheet

United States Department of the Interior
National Park Service

Hobart Masonic Hall
Hobart, Delaware County, New York

National Register of Historic Places Continuation Sheet

Section number 8 Page 4

After the new warrant was issued in 1852, the lodge met in what became known as the Odd Fellows Hall, also known as the McLellan Building, on West Main Street. It remained in this location until 1889, when it moved into its own building on Railroad Avenue (now Cornell Street). The history of the building is recorded in the minutes of the lodge of 2 April 1887, in which the trustees were empowered to buy "of R(ober) J. Hoose a piece of land near the Engine House." The motion was tabled but later carried at a meeting on 16 April 1887. A year later, a committee was appointed to act with the trustees "for the purpose of examining plans and to ascertain as near as possible the amount necessary to erect a suitable building to be used for a Masonic Hall and other purposes, and to report at our next regular communication." Members of that committee were P. Herron, A. H. Grant, E. R. Brock and C. Ostrander. If they made such a report, no traces have been found.

However, on 15 June 1889, the lodge passed a resolution asking its members to loan the lodge "the sums of fifty dollars each, or multiples thereof of such amounts as they may offer" for the erection of a Masonic Hall building on its lot. The aggregate amount of the certificates thus issued was not to exceed \$1,500 and a Masonic Fair was later held, raising the then-goodly sum of \$544.07. The hall was built at a cost of \$2,132.29, with the additional funds needed raised "by various activities of the Lodge." The final note was paid off on 6 August 1915. The building was occupied by the Masons, who rented out the downstairs rooms at \$8 per month. Brother Lewis A. Fuller was the first tenant.

In 1908 additional notes were issued to raise \$1,000 to purchase the furniture, carpet, officers' regalia, a new stove, desks for the secretary and treasurer and to wire the rooms for electricity. This wiring was to be done only upstairs and not in the rooms that were rented out. These notes were paid off in 1924. In 1923, the lot next to the lodge was purchased; however, it was subsequently sold to E. T. Van Buren & Sons, which had rented it for several years.

St. Mary's Chapter, No. 50, Order of the Eastern Star, an adoptive rite of freemasonry, was created by Master Masons. A candidate for the Eastern Star must be either a mason in good standing or a female relative of a

See continuation sheet

United States Department of the Interior
National Park Service

Hobart Masonic Hall
Hobart, Delaware County, New York

National Register of Historic Places Continuation Sheet

Section number 8 Page 5

mason. This chapter was constituted at Hobart on 14 November 1887, under a charter dated 6 June 1887, by Jacob M. Hopper, grand patron, Jennie E. Barnes, grand matron and Calvin D. Haywood, grand secretary. The Eastern Star, which had twenty members in 1880, met at the Masonic hall every Wednesday evening. The Masons and Eastern Star remained active through the mid-twentieth century and continued to use the Hobart lodge until 1997, when they relinquished their charter.

Hobart Masonic Hall

No architect or builder has been identified for the Hobart lodge building, and it is likely that the masons designed and constructed it themselves. The form of the modest wood-frame building accommodated the functional needs of the lodge, primarily the need for a large meeting hall. As such, nearly the entire second floor was allocated for this purpose, while the first floor was divided into smaller rooms for lodging. Later the first floor was used for offices, a theater, facilities for the Eastern Star and other uses. On the façade, separate entrance doors provide direct access either to the first floor rooms or to the more public lodge room above. The form of the building is well suited to its Stick style design. As in this example, buildings in this style are often tall with steep roofs and irregular plans. The deep overhanging eaves and decorative vergeboards seen here are also common. Decoration usually consists of a mixture of wooden wall coverings and applied wooden elements, often used to suggest the building's structural system. This example is especially distinctive because its decorative elements reflect the building's function as a Masonic hall. The most elaborate decoration is found in the front gable, which features a variety of applied ornaments representing tools, including a hammer, ruler, trowel, plumb rule and builder's square. Although some historic finishes have been lost on the interior, the plan and functional divisions remain, particularly the meeting hall and its coved ceiling element. Further, evidence of original decorative finishes survives that could guide future restoration.

The Hobart Masonic Hall retains a high degree of integrity and preserves important information about the early history and development of the village of Hobart.

See continuation sheet

United States Department of the Interior
National Park Service

Hobart Masonic Hall
Hobart, Delaware County, New York

National Register of Historic Places Continuation Sheet

Section number 9 Page 1

Bibliography

- Crawford and Stearns, Architects. "Conditions Assessment for the Hobart Historical Society, Hobart, New York." 2001.
- Griffin, Charles D. *History of Stamford, 1811-1887*. n.p., n.d. Stamford: Stamford Historical Society, 1988.
- MacPherson, Malcolm. *One Hundred Years of Masonry: 1858-1958*. Delhi: Delhi Lodge No. 439, F. and A.M., n.d.
- Morrison, Bortle H. *History of St. Andrew's Lodge No. 289, F&AM*. Hobart: n. p., 1953.
- Munsell, W.W. and Co. *History of Delaware County, New York*. New York: George MacNamara, 1880.
"Town Of Stamford." Electronic text by Mary LeBlanc, CA.
<<http://www.rootsweb.com/~nydela/books/munstam.html>.>
- Murray, David. ed. *Delaware County, New York: History of the County*. Delhi: Clark, 1898.
- Stillson, Henry L., ed. *History of the Ancient and Honorable Fraternity of Free and Accepted Masons and Concordant Orders*. Boston: Fraternity Publishing Co., 1919.

Hobart Masonic Hall

Name of Property

Delaware County, New York

County and State

10. Geographical DataAcreage of property less than one acre**UTM References**

(Place additional UTM references on a continuation sheet.)

1 18 527408 4691022
Zone Easting Northing

2

3
Zone Easting Northing

4

 See continuation sheet**Verbal Boundary Description**

(Describe the boundaries of the property on a continuation sheet.)

Boundary Justification

(Explain why the boundaries were selected on a continuation sheet.)

11. Form Prepared Byname/title Kathleen LaFrank, Program Analyst
organization New York State Historic Preservation Office date June 2001
street & number Peebles Island State Park, Box 189 telephone 518-237-8643 x 3261
city or town Waterford state New York zip code 12188**Additional Documentation**

Submit the following items with the completed form:

Continuation Sheets**Maps**A **USGS map** (7.5 or 15 minute series) indicating the property's location.A **Sketch map** for historic districts and properties having large acreage or numerous resources.**Photographs**Representative **black and white photographs** of the property.**Additional items**

(Check with the SHPO or FPO for any additional items)

Property Owner

(Complete this item at the request of the SHPO or FPO.)

name Hobart Historical Society
street & number 6 Cornell Avenue telephone _____
city or town Hobart state NY zip code 13788**Paperwork Reduction Act Statement:** This information is being collected for applications to the National Register of Historic Places to nominate properties for listing or determine eligibility for listing, to list properties and to amend existing listings. Response to this request is required to obtain a benefit in accordance with the National Historic Preservation Act, as amended (16 U.S.C.470 *et seq.*)**Estimated Burden Statement:** Public reporting burden for this form is estimated to average 18.1 hours per response including time for reviewing instructions, gathering and maintaining data and completing and reviewing the form. Direct comments regarding this burden estimate or any aspect of this form to the Chief, Administrative Services Division, National Park Service, P.O. Box 37127, Washington, DC 20013-7127; and the Office of Management and Budget, Paperwork Reductions Projects (1024-0018), Washington, DC 20503.

**United States Department of the Interior
National Park Service**

**Hobart Masonic Hall
Hobart, Delaware County, New York**

National Register of Historic Places Continuation Sheet

Section number 10 Page 1

Verbal Boundary Description

The boundary is indicated by a heavy line on the attached tax map.

Boundary Justification

The boundary was drawn to include the historic and current property associated with the building.

**United States Department of the Interior
National Park Service**

**Hobart Masonic Hall
Hobart, Delaware County, New York**

National Register of Historic Places Continuation Sheet

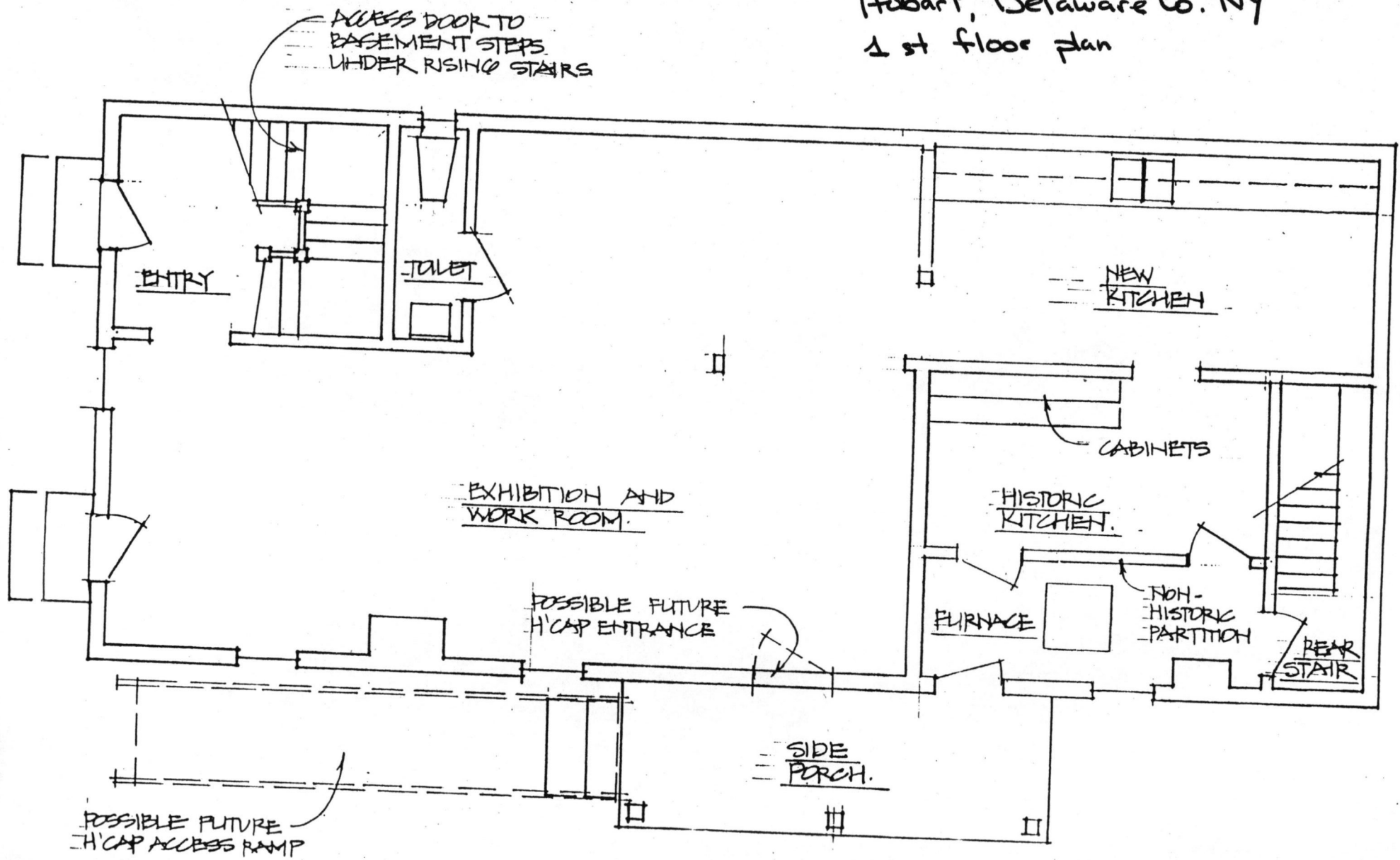
Section number 11 Page 1

Research and documentation provided by:

Celin V. Schoen
Hobart Historical Society
P. O. Box 13788
607-538-9279

See continuation sheet

Hobart Masonic Hall
Hobart, Delaware Co. NY
1st floor plan

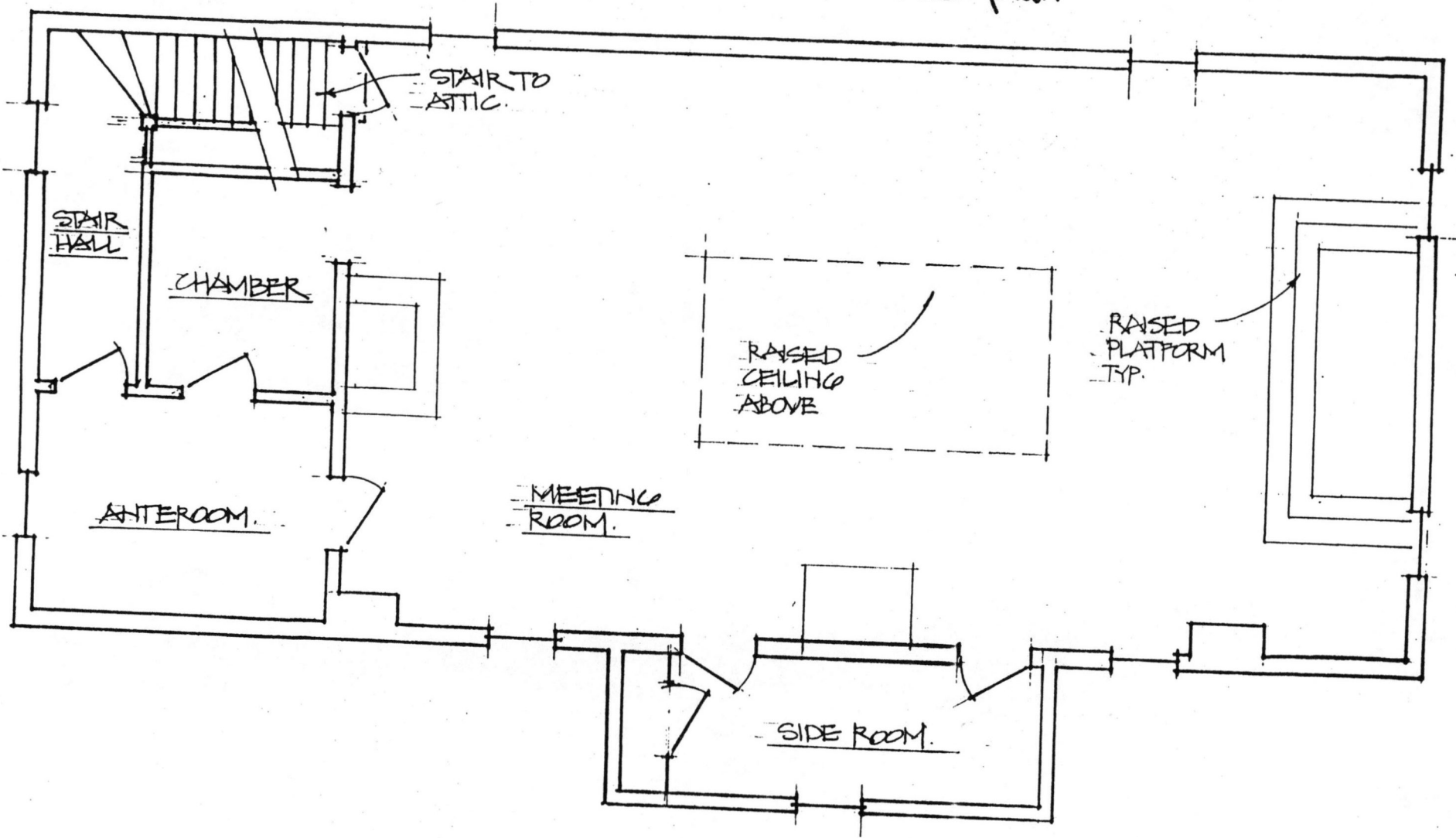


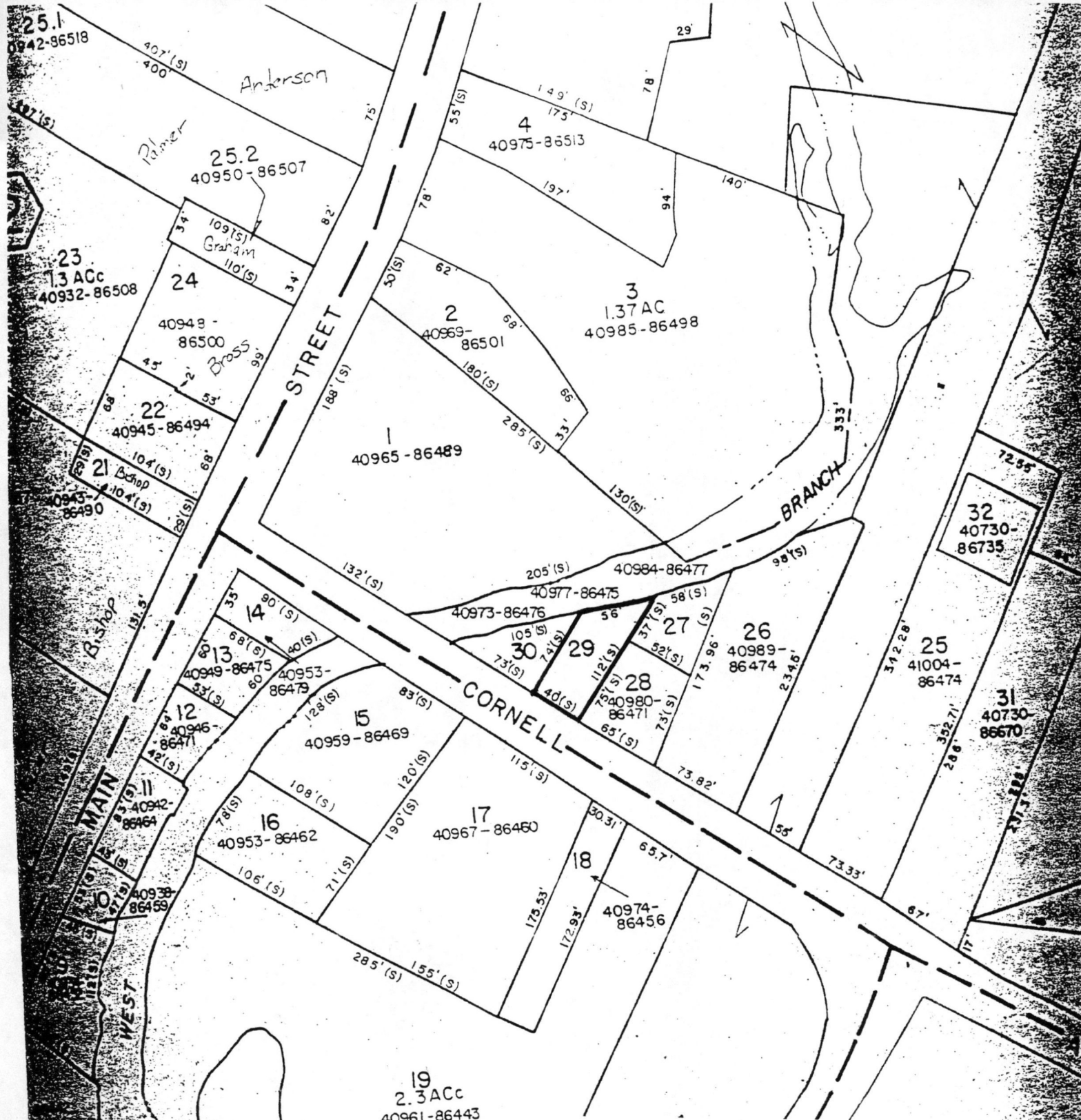
POSSIBLE FUTURE
H'CAP ACCESS RAMP

SIDE
PORCH.



Hobart Masonic Hall.
Hobart, Delaware Co. NY
2nd floor plan





Hobart Masonic Hall
 Hobart, Delaware Co. NY
 1" = 100'
 boundary indicated by heavy line

UNITED STATES DEPARTMENT OF THE INTERIOR
NATIONAL PARK SERVICE

NATIONAL REGISTER OF HISTORIC PLACES
EVALUATION/RETURN SHEET

REQUESTED ACTION: NOMINATION

PROPERTY NAME: Hobart Masonic Hall

MULTIPLE NAME:

STATE & COUNTY: NEW YORK, Delaware

DATE RECEIVED: 11/13/01 DATE OF PENDING LIST: 12/07/01
DATE OF 16TH DAY: 12/23/01 DATE OF 45TH DAY: 12/29/01
DATE OF WEEKLY LIST:

REFERENCE NUMBER: 01001399

REASONS FOR REVIEW:

APPEAL: N DATA PROBLEM: N LANDSCAPE: N LESS THAN 50 YEARS: N
OTHER: N PDIL: N PERIOD: N PROGRAM UNAPPROVED: N
REQUEST: N SAMPLE: N SLR DRAFT: N NATIONAL: N

COMMENT WAIVER: N

ACCEPT RETURN REJECT 12/28/01 DATE

ABSTRACT/SUMMARY COMMENTS:

**Entered in the
National Register**

RECOM./CRITERIA _____

REVIEWER _____ DISCIPLINE _____

TELEPHONE _____ DATE _____

DOCUMENTATION see attached comments Y/N see attached SLR Y/N



ROBERT HISTORICAL
CENTER

Hobart Masonic Hall

Hobart, Delaware Co. NY

photo: ~~e. schoen~~ 2001 c. schoen

neg: OPR1P

view: facade and east side elevation

1 of 4

021 038 NNMC --- 18.09.01 ELITE PHOTO



HOBART HISTORICAL
CENTER

Hobart Masonic Hall

Hobart, Delaware Co. NY

photo: C. Schoen 2001

neg: OPRHP

view: facade looking N.E.

2 of 4

18.09.01 ELITE PHOTO



Hobart Masonic Hall

Hobart, Delaware Co. NY

photo: C. Schoen, 2001

neg: OPRHP

view: 2nd floor lodge room

#3 of 4

013 038 NNMC --- 18.09.01 ELITE PHOTO



Hobart Masonic Hall

Hobart, Delaware Co. NY

photo: C. Schoen, 2001

Neg: OPRHP

View: stair accessing 2nd floor

#4 of 4

Hobart Masonic Hall
 Hobart, Delaware Co., NY
 Hobart Quad Zone 18

18/527408/4691022



NEW YORK STATE
 DEPARTMENT OF TRANSPORTATION

HOBART QUADRANGLE
 NEW YORK-DELAWARE CO.
 7.5 MINUTE SERIES



Prepared and published in 1985 by the New York State Department of Transportation, in cooperation with the U.S. Department of Transportation, Federal Highway Administration.

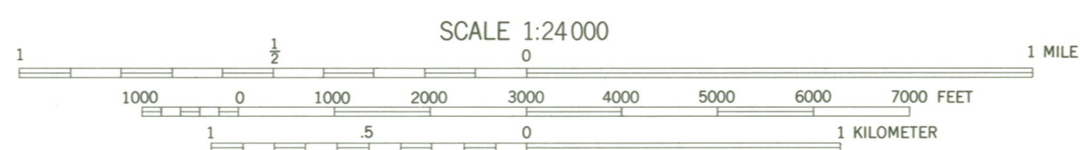
Map base from 1943 U.S. Geological Survey 7.5-minute quadrangle.

Map revisions made using 1982 aerial photography, construction plans, official records and other sources. Features revised include: highways and other transportation facilities; civil boundaries; recreation sites; hydrography; and buildings. Grey tint indicates intensely developed areas in which only landmark buildings are shown. Darker grey shows open water.

Revisions may not comply with National Map Accuracy Standards.

Correspondence concerning this and other maps of the Department of Transportation should be directed to: Map Information Unit, New York State Department of Transportation, State Campus, Albany, New York 12232.

1985 revisions by D. M. Larson



Polyconic projection. 1927 North American datum.

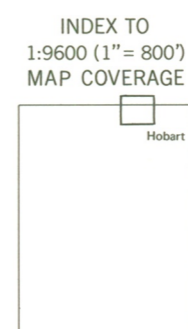
1000-meter ticks based on the New York Transverse Mercator grid.

Between 72° and 78° West Longitude, this grid is identical to Zone 18 of the Universal Transverse Mercator grid. Areas east of 72° and west of 78° are direct mathematical extensions of Zone 18.

10,000-foot ticks based on the New York Plane Coordinate grid, West Zone.

Magnetic declination for 1985 is approximately 13° West

Contours, at 20-foot intervals, shown unrevised from 1945 U.S. Geological Survey map. Datum is mean sea level.



- BOUNDARIES:**
- State.....
 - County.....
 - Town or City.....
 - Incorporated Village.....
- ROADS:**
- Touring Route markers:
 - State.....
 - U. S.
 - State.....
 - County.....
 - State Highway number and limit.....
 - County road.....
 - Interchange number.....
- Divided highways and streets:**
- Wide mall.....
 - Narrow mall or barrier.....
- Undivided highways and streets:**
- 4 or more lanes.....
 - Less than 4 lanes.....
 - Vehicle track; trail.....