

United States Department of the Interior
National Park Service

National Register of Historic Places
Registration Form



1037

This form is for use in nominating or requesting determinations of eligibility for individual properties or districts. See instructions in *How to Complete the National Register of Historic Places Registration Form* (National Register Bulletin 16A). Complete each item by marking "x" in the appropriate box or by entering the information requested. If an item does not apply to the property being documented, enter "N/A" for "not applicable." For functions, architectural classification, materials and areas of significance, enter only categories and subcategories listed in the instructions. Place additional entries and narrative items on continuation sheets (NPS Form 10-900a). Use a typewriter, word processor, or computer, to complete all items.

1. Name of Property

historic name Hadley Mountain Fire Observation Station
other names/site number _____

2. Location

street & number Hadley Mountain not for publication
city or town Hadley vicinity
state New York code NY county Saratoga code 091 zip code 12835

3. State/Federal Agency Certification

As the designated authority under the National Historic Preservation Act, as amended, I certify that this nomination request for determination of eligibility meets the documentation standards for registering properties in the National Register of Historic Places and meets the procedural and professional requirements set forth in 36 CFR Part 60. In my opinion, the property meets does not meet the National Register criteria. I recommend that this property be considered significant nationally statewide locally. See continuation sheet for additional comments.

Signature of certifying official/Title _____ Date _____

State or Federal agency and bureau _____

In my opinion, the property meets does not meet the National Register criteria. See continuation sheet for additional comments.

Therese Carter, SHPO 7/26/01
Signature of certifying official/Title _____ Date _____

State or Federal agency and bureau _____

4. National Park Service Certification

I hereby certify that this property is:

- entered in the National Register. See continuation sheet.
- determined eligible for the National Register. See continuation sheet.
- determined not eligible for the National Register.
- removed from the National Register.
- other, (explain:) _____

John
Signature of the Keeper

Date of Action

**Entered in the
National Register**

9/23/01

5. Classification

Ownership of Property

(Check as many boxes as apply)

- private
- public-local
- public-State
- public-Federal

Category of Property

(Check only one box)

- building(s)
- district
- site
- structure
- object

Number of Resources within Property

(Do not include previously listed resources in the count.)

Contributing	Noncontributing	
1	2	buildings
1		sites
3		structures
		objects
5	2	Total

Name of related multiple property listing

(Enter "N/A" if property is not part of a multiple property listing.)

Fire Observation Stations of the NYS Forest Preserve

Number of contributing resources previously listed in the National Register

0

6. Function or Use

Historic Functions

(Enter categories from instructions)

GOVERNMENT/fire observation station

Current Functions

(Enter categories from instructions)

NOT IN USE

7. Description

Architectural Classification

(Enter categories from instructions)

NO STYLE/utilitarian (fire tower)

Rustic (cabin)

Materials

(Enter categories from instructions)

foundation Stone (cabin)

walls Wood (cabin)

roof asphalt

other Metal/steel (tower)

Narrative Description

(Describe the historic and current condition of the property on one or more continuation sheets.)

United States Department of the Interior
National Park Service

National Register of Historic Places
Continuation Sheet

Hadley Mountain Fire Observation Station
Saratoga County, New York

Section number 7 Page 1

Narrative Description

The **Hadley Mountain Fire Observation Station** is located at the 2,680' summit of Hadley Mountain in the town of Hadley,¹ Saratoga County in the Adirondack Forest Preserve. The fire observation station includes a 42-foot tall, steel frame lookout tower erected in 1917, a jeep and foot trail which extends from the base of the mountain to a point below its summit, a c1950 observer's cabin, a masonry root cellar, a woodshed and a privy, both of more recent construction. The boundary for the nominated property is drawn to include a 1,000 foot square area surrounding the tower which includes the observer's cabin and former garden, and the full length of the 1.8 mile trail and related features (e.g., culverts, swales, support and retaining walls) leading up to the tower from the base of the mountain.

Contributing resources: 5 (tower, observer's cabin, root cellar, hiking/jeep trail, garden site)

Non-contributing resources: 2 (woodshed, privy)

The tower stands alone in a clearing on exposed ledge at the summit. The 42-foot tower, purchased in 1916 and erected in 1917, was prefabricated by the Aermotor Corporation. In 1919, it was blown over and subsequently re-erected. In 1929, the tower was retrofitted with an internal staircase.² The existing tower is typical of the "lighter duty" structures initially built by the Conservation Commission in 1916 and 1917 and subsequently retrofitted with staircases. The structure consists of a square steel and glass "cab" enclosure for observation erected atop a riveted and bolted frame of angular steel. The frame is reinforced with small diameter rods. Steel stairs divided into five flights and four landings provided access from the ground to the cab. The legs of the structure are anchored by four standard connection plates that are bolted into the exposed bedrock on the summit.

Nestled into a shoulder east of and below the summit is the former observer's cabin and associated outbuildings. The cabin is a rustic one-story dwelling built around 1950. The one-story, gable roofed cabin is sided with rough-sawn, waney edge "brainstorm" siding and roofed with asphalt shingles. Its windows are boarded up and it has a plank door. It is divided into three rooms with an integral porch and constructed on footings. The cabin conveys a strong feeling of association with the station and is considered a contributing resource. To its west, built into the hill, is a primitive root cellar built of dry-laid rubble stone. It too is a contributing resource.

¹The town of Hadley was formed from the towns of Greenfield and Northumberland on February 27, 1801 and named after a family of which no local record survives. Lester St. John Thomas, *Timber, Tannery and Tourists* (Lake Luzerne, NY, 1979).

²The blue form prepared in 1990 indicates that the tower was replaced, but this could not be independently confirmed in other records consulted.

United States Department of the Interior
National Park Service

National Register of Historic Places
Continuation Sheet

Hadley Mountain Fire Observation Station
Saratoga County, New York

Section number 7 Page 2

Behind the cabin, to its south, is a one-story shed-roofed woodshed clad in T-1-11 siding, which is not a contributing feature on the basis of its recent age. The outline of a rectangular plan vegetable garden sited immediately north of the cabin remains visible. It terminates in two apple trees at its north end. A privy of recent construction is sited at the northwest corner of the garden.

From the summit, the trail descends the mountain in a southeasterly and easterly direction over a moderate grade for approximately 1.8 miles to a town road. The route of the current trail incorporates stretches of the jeep road used when the station was active and is a contributing feature. The trail is maintained by the NYS Department of Environmental Conservation and remains in active recreational use. The observer's cabin is unused, open to the elements and subject to vandalism. The tower is intact and was recently subject to extensive repairs including replacement of some steel members, stair treads, and glazing in the cab.

See continuation sheet

8 Statement of Significance

Applicable National Register Criteria

(Mark "x" in one or more boxes for the criteria qualifying the property for National Register listing.)

- A Property is associated with events that have made a significant contribution to the broad patterns of our history.
B Property is associated with the lives of persons significant in our past.
C Property embodies the distinctive characteristics of a type, period or method of construction or represents the work of a master, or possesses high artistic values, or represents a significant and distinguishable entity whose components lack individual distinction.
D Property has yielded, or is likely to yield, information important in prehistory or history.

Criteria considerations

(mark "x" in all the boxes that apply.)

Property is:

- A owned by a religious institution or used for religious purposes.
B removed from its original location.
C a birthplace or grave.
D a cemetery.
E a reconstructed building, object or structure.
F a commemorative property.
G less than 50 years of age or achieved significance within the past 50 years.

Narrative Statement of Significance

(Explain the significance of the property on one or more continuation sheets.)

9. Major Bibliographical References

Bibliography

(cite the books, articles, and other sources used in preparing this form on one or more continuation sheets.)

Previous documentation on file (NPS):

- preliminary determination of individual listing (36 CFR 67) has been requested
previously listed in the National Register
previously determined eligible by the National Register
designated a National Historic Landmark
recorded by Historic American Buildings Survey
recorded by Historic American Engineering Record

Areas of Significance

(Enter categories from instructions)

- Engineering
Recreation
Conservation
Architecture

Period of Significance

1917 -1950

Significant Dates

1917; 1950; 1929

Significant Person

(Complete if Criterion B is marked above)

N/A

Cultural Affiliation

N/A

Architect/Builder

Aermotor Corporation (tower manufacturer)

Primary location of additional data

- State Historic Preservation Office
Other State agency
Federal agency
Local government
University
Other

Name of repository:

NYSDEC, 50 Wolf Rd., Albany, NY

United States Department of the Interior
National Park Service

National Register of Historic Places
Continuation Sheet

Hadley Mountain Fire Observation Station
Saratoga County, New York

Section number 8 Page 1

The **Hadley Mountain Fire Observation Station** is a component in the multiple property submission, **Fire Observation Stations of the NYS Forest Preserve**. It was identified as a historic resource in an unpublished inventory prepared by NYSDEC in 1991. Subsequently, with assistance from the New York State Office of Parks, Recreation and Historic Preservation, Field Services Bureau, the Hadley Mountain Fire Observation Station was identified as meeting the criteria for listing on the State/National Register of Historic Places. Additional contextual information for the Hadley Mountain Fire Observation Station can be found in **Sections E:1F *Conservation as a Social Service: Managing Recreation and Resource Protection with Fire Observation Stations, 1915-1930*; E:2C *Standardized Fire Observation Stations, 1916-1932*; E:2E *Decommissioning and Abandonment of the Fire Observation System 1951-1991*; and E:2F *Adoption and Preservation of the Fire Observation Stations, 1992-2000*** of the Multiple Property Documentation Form. Additional associated property type information can be found in **Section F:1 *Steel Towers*; F:2 *Observer Cabins and Outbuildings*; and F:3 *Trail and Road Features*** of the Multiple Property Documentation Form.

Statement of Significance

The **Hadley Mountain Fire Observation Station** is significant under criteria A and C for its association with the New York State Forest Preserve and as a representative example of an early twentieth century fire observation tower with associated structures.

The Hadley Mountain station was planned in 1916 and constructed in 1917. The 12,000-acre area surrounding the tower had burned repeatedly during the previous decade despite a station located on Ohmer 2,571' summit of Ohmer Mountain nearby. The new station took the place of the Ohmer Mountain station, which was discontinued in 1916. The Hadley Mountain station included the existing 42-foot Aermotor steel tower and a cabin for the observer. It was one of two new stations established that year, the other being Mount Tremper, which is also included in this multiple property submission.

The 42-foot Aermotor tower was one of 13 new steel towers erected in 1917. It had been purchased in 1916 and was the last of the "lighter duty" towers erected during the previous year when the Conservation Commission began implementing its new policy of providing the observation stations with permanent steel observation towers equipped with enclosed cabs "Our experience with the towers purchased in 1916 demonstrated that greater satisfaction could be procured by using a heavier type tower, equipped with stairs, instead of the ladders which were on the 1916 towers."¹ The other 12 towers, of the heavier type, were installed at: Blue, Snowy Tremper, Poke-O-Moonshine (all included in this multiple property submission), Adams, Belfry, Cat,

¹NYS Conservation Commission. *Report for the Year 1917*. Albany: J.B. Lyon, 1918, pp. 68-69.

United States Department of the Interior
National Park Service

National Register of Historic Places
Continuation Sheet

Hadley Mountain Fire Observation Station
Saratoga County, New York

Section number 8 Page 2

Catamount, Loon Lake, Lyon, Rondaxe, and Hunter (previously listed on the National Register). Practically all the labor in erecting the towers was performed by members of the ranger force. The average cost of the towers, including purchase, transportation and expense of erection, excluding ranger labor, was about \$530. The new cabin was one of seven, the others built at Hurricane, Blue, Kempshall, Rondaxe, Tremper and Twaddell.

In October, 1919, the Hadley and Gore Mountain towers were blown over during a hurricane and subsequently re-erected.² In 1929, the Conservation Commission began to replace original wood stairways and ladders in the 1916 "lighter" steel towers. "The early steel towers purchased by the department were equipped with wooden stairways, which are beginning to wear out. Self-supporting steel stairways have been built during the past year in three towers (Hadley, Cathead and Tomany). These new stairs have proven practical. As funds are available, additional sets will be secured until all State fire towers originally equipped with ladders or wooden stairs, are supplied with this measure of safety."³

The date of an original observer's cabin is not documented. A new cabin was built in 1926, one of two built that year (the other at Sterling outside the preserve).⁴ In 1934, it was one of ten that were "improved."⁵ In July of that year, the Knickerbocker Press profiled observer John Briner and photographed the station, including the garden.⁶ A photograph taken from the tower to illustrate the article showed a cabin of similar dimensions near the site of the existing dwelling, with a detached shed behind, a garden beyond the front door, and a privy near the site of the existing privy. The root cellar was probably present by this time. The cabin was subsequently replaced with the existing dwelling around 1950 on new footing piers next to the earlier cabin.

The Hadley Mounai Fire Tower was used by the National Oceanic and Atmospheric Administration for Saratoga County in 1973 to establish permanent bench markers for preparing county tax maps. The station was abandoned in 1990. In 1995, the Hadley Mountain Fire Tower became the ninth structure in New York State to be included in the National Historic Lookout Register.⁷

²Jeff Meyers, "Steel Sentries," [Plattsburgh, NY] *Press-Republican*, September 19, 1993, C-1.

³NYS Conservation Commission. *Report for the Year 1929*. Albany: J.B. Lyon, 1930, p. 108.

⁴NYS Conservation Commission. *Report for the Year 1926*. Albany: J.B. Lyon, 1927, p. 191.

⁵NYS Conservation Commission. *Report for the Year 1934*. Albany: J. B. Lyon, 1935, p. 99.

⁶*The [Albany] Knickerbocker Press*, July 24, 1934, p. 4.

⁷NH Lookout Register sponsored by American Resources Group, Vienna, VA US 110, NY #09.

United States Department of the Interior
National Park Service

National Register of Historic Places
Continuation Sheet

Hadley Mountain Fire Observation Station
Saratoga County, New York

Section number 8 Page 3

The Hadley Mountain Fire Tower Committee was formed in 1995 by a group of citizens interested in saving and restoring the fire tower. A NYSDEC engineer's report concluded that the tower was structurally deficient for use by the public, and recommended a program of repairs including replacement of some horizontal and diagonal bracing members, stabilization of the stairs, replacement of all bolts in structural members, replacement of guy wires, and repairs to the concrete bearing pads.⁸ The committee solicited support and financial assistance for the work from the general public, local government and community organizations.⁹ By early 1996, surrounding local towns had endorsed the restoration program and funds were raised from the general public and state to buy restoration materials.¹⁰ Replacement materials were airlifted to the site and installed by NYSDEC rangers and volunteers during the summer of 1996.¹¹

⁸Kruger.

⁹Hartley, "Plans."

¹⁰Hartley, "Group."

¹¹Hartley, "Quiet."

United States Department of the Interior
National Park Service

National Register of Historic Places
Continuation Sheet

Hadley Mountain Fire Observation Station
Saratoga County, New York

Section number 9 Page 1

Major Bibliographical References

"A Room with a view," *Adirondack Life*, June, 1993, p. 16.

"Adirondack Firetowers get new lease on life." *Adirondack Explorer*, Aug, 1998, 14-15.

Freeman, Jack. "Geology Notes as related by Dr. John Thomas professor at Skidmore College on a hike up Hadley Mountain, 11 July 1998," typescript [ADK]

Karlin, Rick. "Renovating Adirondack lookouts a tall order." *Albany Times Union*, Aug. 2, 1998, A3.

Kruger, Bob to Steve Guenther, memo re: Hadley Mt. Fire Tower, October 11, 1995, typescript [NYSDEC Bureau of Public Lands, Division of Lands and Forests files]

"Life on Hadley's Peak is Great Providing You're John Briner." *The [Albany] Knickerbocker News*, July 24, 1934, p4, illus.

Hadley Mountain Fire Tower Committee, "Hadley Mountain Fire Tower," brochure, no date.

Hartley, Forrest. "Group gets \$2,500 to help renovate fire tower," [Glens Falls] *Post Star*, Feb 22, 1996, p. B2.

_____. "Plans for fire tower renewed," [Glens Falls] *Post Star*, Jan 26, 1995, p. B2.

_____. "Quiet community awakened by airlift to Hadley fire tower," [Glens Falls] *Post Star*, July 25, 1996, p. B1

Thomas, Lester St. John Thomas, *Timber, Tannery and Tourists*. Lake Luzerne, NY, 1979.

01001037

Hadley Mountain Fire Observation Station

Name of Property

Saratoga County, New York

County and State

10. Geographical Data

Acreage of property 6.57 acres

UTM References

(Place additional UTM references on a continuation sheet.)

1	18	583332	4802954	3			
	<i>Zone</i>	<i>Easting</i>	<i>Northing</i>		<i>Zone</i>	<i>Easting</i>	<i>Northing</i>
2	18	584997	4802659	4			

See continuation sheet

Verbal Boundary Description

See Attached Map

Boundary Justification

Boundaries were drawn to include the extant resources historically associated with the observation station; i.e., the tower, base camp area, observer's cabin, root cellar, garden site, the hiking trail and related features such as culverts, swales, support and retaining walls. Boundary includes a 1,000-foot square area surrounding the tower and a 15-foot buffer from the center line on either side of the 1.8-mile long hiking/jeep trail leading from the base of the mountain to the station's site.

11. Form Prepared By

Name/title Wes Haynes, consultant (edited by: L. Garofalini, NYSOPRHP, Box 189, Waterford, NY 12188-0189)

organization Adirondack Architectural Heritage date 5/19/00 (ed. 3/01)

street & number 1790 Main St., Civic Center, Rm. 312 telephone 518-834-9328

city or town Keeseville state NY zip code 12944

Additional Documentation

Submit the following items with the completed form:

Continuation Sheets

Maps

A **USGS map** (7.5 or 15 minute series) indicating the property's location.

A **Sketch map** for historic districts and properties having large acreage or numerous resources.

Photographs

Representative **black and white photographs** of the property.

Additional items

(Check with the SHPO or FPO for any additional items)

Property Owner

(Complete this item at the request of the SHPO or FPO.)

name New York State (Department of Environmental Conservation)

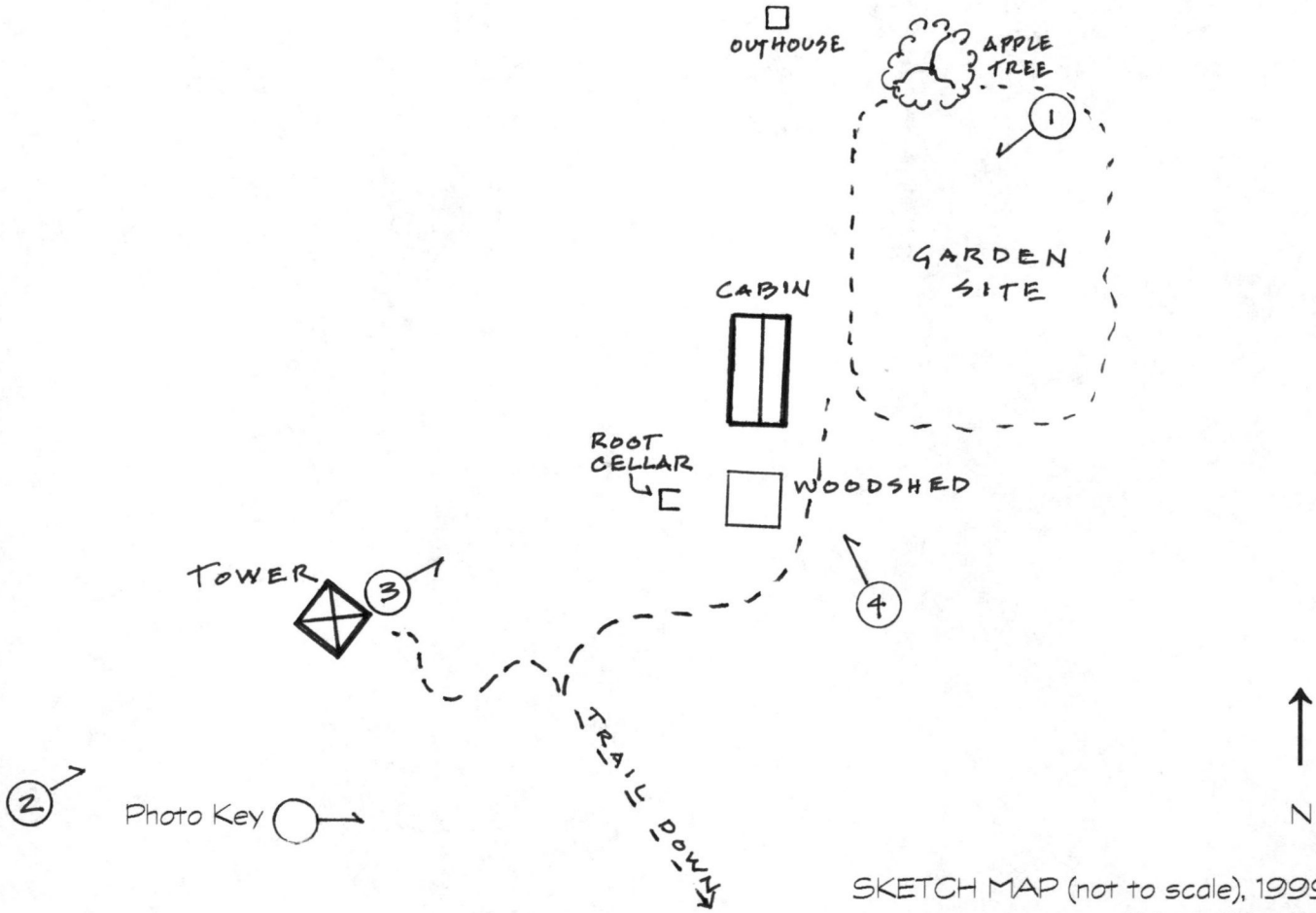
street & number 50 Wolf Rd. telephone 518-457-7433

city or town Albany state NY zip code 12233

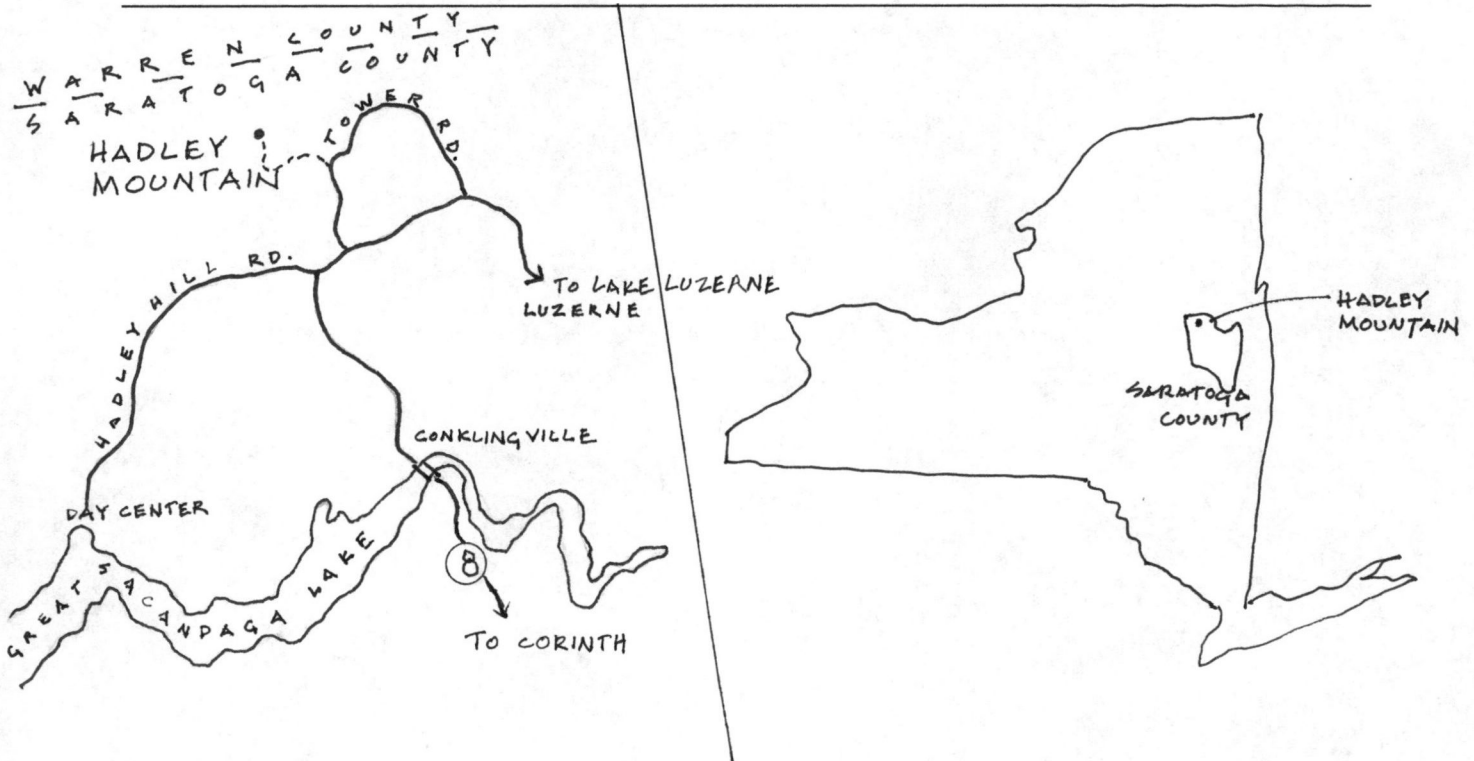
Paperwork Reduction Act Statement: This information is being collected for applications to the National Register of Historic Places to nominate properties for listing or determine eligibility for listing, to list properties and to amend existing listings. Response to this request is required to obtain a benefit in accordance with the National Historic Preservation Act, as amended (16 U.S.C.470 *et seq.*)

Estimated Burden Statement: Public reporting burden for this form is estimated to average 18.1 hours per response including time for reviewing instructions, gathering and maintaining data and completing and reviewing the form. Direct comments regarding this burden estimate or any aspect of this form to the Chief, Administrative Services Division, National Park Service, P.O. Box 37127, Washington, DC 20013-7127; and the Office of Management and Budget, Paperwork Reductions Projects (1024-0018), Washington, DC 20503.

The Hadley Mountain Fire Observation Station Hadley, Saratoga County, New York



SKETCH MAP (not to scale), 1999
W. Haynes, del.





Hadley Mtn Fire Observation Station
Town of Hadley
Saratoga County, NY

003 055 NNNC --- 10 04'01 ELITE PHOTO

Photo #1 Fire tower & observer's
CABIN

Wes Haynes, photo



Hadley Mtn. Fire Observation Station
Town of Hadley
Saratoga County, NY

Photo # 2 Firetower

Wes Haynes, photo



Hadley Mtn. Fire Observation Station
Town of Hadley
Saratoga County, NY

Photo #3 Observer's Cabin from
tower

002 055 NANC --- 10.04.01 ELITE PHOTO

Wes Haynes, Photo



Hadley Mtn. Fire Observation
Station

Town of Hadley
Saratoga County, NY

Photo #4 Observers Cabin

was Haynes, photo

BARONS MILLS

NEW YORK STATE DEPARTMENT OF TRANSPORTATION



STONY CREEK QUADRANGLE NEW YORK 7.5 MINUTE SERIES

THE GLEN

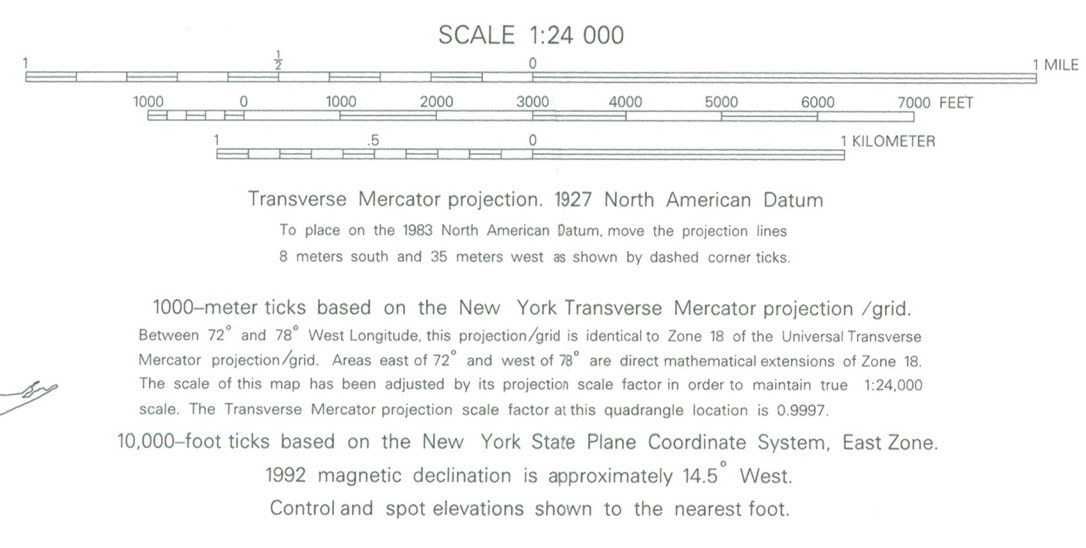


MAP 1 of 2
HADLEY MOUNTAIN FIRE
OBSERVATION STATION
HADLEY, SARATOGA COUNTY
NY
Zone 18
E/583332 N/4802954

Published by the New York State Department of Transportation, in cooperation with the U.S. Department of Transportation, Federal Highway Administration.
Map base from 1968 U.S. Geological Survey 7.5-minute quadrangle. Map revisions made using aerial photographs dated 1990, construction plans, official records and other sources. Features revised include: highways and other transportation facilities; civil and public land boundaries; recreation sites; hydrography; and buildings. Gray tint indicates developed areas in which only landmark buildings are shown. Darker gray tint indicates open water features. Revisions may not comply with National Map Accuracy Standards. Correspondence concerning this and other Department of Transportation maps should be directed to: Map Information Unit, New York State Department of Transportation, State Campus, Building 4, Room 105, Albany, New York 12232.



QUADRANGLE LOCATION



Transverse Mercator projection, 1927 North American Datum
To place on the 1983 North American Datum, move the projection lines 8 meters south and 35 meters west as shown by dashed corner ticks.
1000-meter ticks based on the New York Transverse Mercator projection / grid.
Between 72° and 78° West Longitude, this projection / grid is identical to Zone 18 of the Universal Transverse Mercator projection / grid. Areas east of 72° and west of 78° are direct mathematical extensions of Zone 18. The scale of this map has been adjusted by its projection scale factor in order to maintain true 1:24,000 scale. The Transverse Mercator projection scale factor at this quadrangle location is 0.9997.
10,000-foot ticks based on the New York State Plane Coordinate System, East Zone.
1992 magnetic declination is approximately 14.5° West.
Control and spot elevations shown to the nearest foot.

Contours, at 20-foot intervals, shown unrevised from 1968 U.S. Geological Survey map. Datum is mean sea level.

BOUNDARIES:

- State: - - - - -
- County: - - - - -
- Town or City: - - - - -
- Incorporated Village: - - - - -
- State / Federal Land: - - - - -

ROADS:

- Posted Touring Route: Interstate (I-19), U.S. (20), State (36), County (54)
- State Highway (SH) number and limit: 8020
- County road: (72)
- Interchange number: (8)
- Divided: Wide mall or barrier (—), Narrow mall or barrier (—)
- Undivided: 4 or more lanes (—), Less than 4 lanes (—)
- Vehicle track; trail: - - - - -



NEW YORK STATE
DEPARTMENT OF TRANSPORTATION

CONKLINGVILLE QUADRANGLE
NEW YORK-SARATOGA CO.
7.5 MINUTE SERIES

MAP 2 of 2
HADLEY MOUNTAIN FIRE
OBSERVATION STATION
Hadley, Saratoga County
NY
Zone: 18
② E/584997 N/4802659



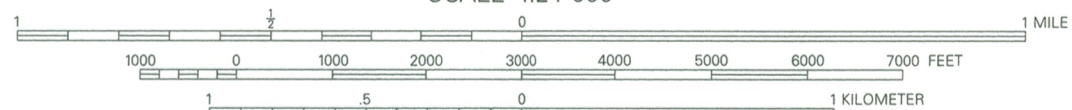
Published by the New York State Department of Transportation,
in cooperation with the U.S. Department of Transportation,
Federal Highway Administration.

Map base from 1966 U.S. Geological Survey 7.5-minute quadrangle.
Map revisions made using aerial photographs dated 1990, construction
plans, official records and other sources. Features revised include:
highways and other transportation facilities; civil and public
land boundaries; recreation sites; hydrography; and buildings.
Gray tint indicates developed areas in which only landmark
buildings are shown. Darker gray tint indicates open water features.
Revisions may not comply with National Map Accuracy Standards.
Correspondence concerning this and other Department of
Transportation maps should be directed to: Map Information
Unit, New York State Department of Transportation, State Campus,
Building 4, Room 105, Albany, New York 12232.



QUADRANGLE LOCATION

SCALE 1:24 000



Transverse Mercator projection, 1927 North American Datum
To place on the 1983 North American Datum, move the projection lines
8 meters south and 35 meters west as shown by dashed corner ticks.

1000-meter ticks based on the New York Transverse Mercator projection /grid.
Between 72° and 76° West Longitude, this projection/grid is identical to Zone 18 of the Universal Transverse
Mercator projection/grid. Areas east of 72° and west of 76° are direct mathematical extensions of Zone 18.
The scale of this map has been adjusted by its projection scale factor in order to maintain true 1:24,000
scale. The Transverse Mercator projection scale factor at this quadrangle location is 0.9997.

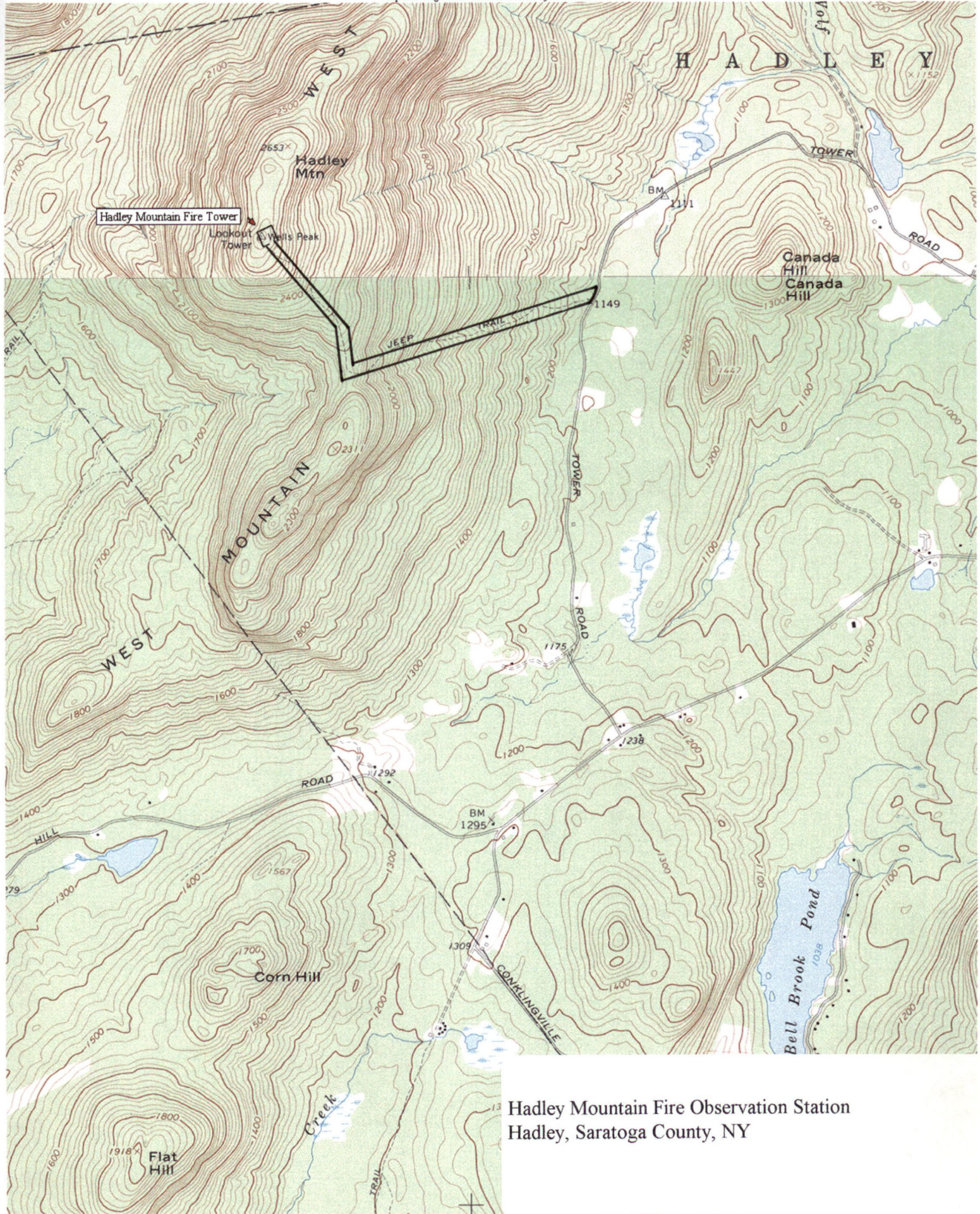
10,000-foot ticks based on the New York State Plane Coordinate System, East Zone.

1992 magnetic declination is approximately 14.5° West

Contours, at 20-foot intervals, shown unrevised from 1966
U.S. Geological Survey map. Datum is mean sea level.

BOUNDARIES:
State
County
Town or City
Incorporated Village
State / Federal Land

ROADS:
Postcard Touring Route:
Interstate
U.S.
State
County
State Highway (SH) number
and limit
County road
Interchange number
Divided:
Wide mall
Narrow mall or barrier
Undivided:
4 or more lanes
Less than 4 lanes
Vehicle track; trail



Hadley Mountain Fire Observation Station
Hadley, Saratoga County, NY

MN
14°

