

United States Department of the Interior
National Park Service



1035

National Register of Historic Places
Registration Form

This form is for use in nominating or requesting determinations of eligibility for individual properties or districts. See instructions in *How to Complete the National Register of Historic Places Registration Form* (National Register Bulletin 16A). Complete each item by marking "x" in the appropriate box or by entering the information requested. If an item does not apply to the property being documented, enter "N/A" for "not applicable." For functions, architectural classification, materials and areas of significance, enter only categories and subcategories listed in the instructions. Place additional entries and narrative items on continuation sheets (NPS Form 10-900a). Use a typewriter, word processor, or computer, to complete all items.

1. Name of Property

historic name Blue Mountain Fire Observation Station
other names/site number _____

2. Location

street & number Blue Mountain not for publication
city or town Town of Indian Lake vicinity
state New York code NY county Hamilton code 041 zip code 12842

3. State/Federal Agency Certification

As the designated authority under the National Historic Preservation Act, as amended, I certify that this nomination request for determination of eligibility meets the documentation standards for registering properties in the National Register of Historic Places and meets the procedural and professional requirements set forth in 36 CFR Part 60. In my opinion, the property meets does not meet the National Register criteria. I recommend that this property be considered significant nationally statewide locally. See continuation sheet for additional comments.

Theresa Carter SAPO 7/26/01
Signature of certifying official/Title Date

State or Federal agency and bureau

In my opinion, the property meets does not meet the National Register criteria. See continuation sheet for additional comments.

Signature of certifying official/Title Date

State or Federal agency and bureau

4. National Park Service Certification

I hereby certify that this property is:

- entered in the National Register. See continuation sheet.
- determined eligible for the National Register. See continuation sheet.
- determined not eligible for the National Register.
- removed from the National Register.
- other, (explain:)

for
Signature of the Keeper

Entered in the
National Register

Date of Action

9/23/01

5. Classification

Ownership of Property

(Check as many boxes as apply)

- private
- public-local
- public-State
- public-Federal

Category of Property

(Check only one box)

- building(s)
- district
- site
- structure
- object

Number of Resources within Property

(Do not include previously listed resources in the count.)

Contributing	Noncontributing	
	1	buildings
1		sites
2	1	structures
1		objects
4	2	Total

Name of related multiple property listing

(Enter "N/A" if property is not part of a multiple property listing.)

Fire Observation Stations of the NYS Forest Preserve

Number of contributing resources previously listed in the National Register

0

6. Function or Use

Historic Functions

(Enter categories from instructions)

GOVERNMENT/fire observation station

Current Functions

(Enter categories from instructions)

NOT IN USE

7. Description

Architectural Classification

(Enter categories from instructions)

NO STYLE/utilitarian (fire tower)

Materials

(Enter categories from instructions)

foundation

walls

roof

other

Metal/steel (tower)

Narrative Description

(Describe the historic and current condition of the property on one or more continuation sheets.)

United States Department of the Interior
National Park Service

National Register of Historic Places
Continuation Sheet

Blue Mountain Fire Observation Station
Hamilton County, New York

Section number 7 Page 1

Narrative Description

The **Blue Mountain Fire Observation Station** is located at the 3,759' summit of Blue Mountain in the town of Indian Lake, Hamilton County, in the Adirondack Forest Preserve. The fire observation station includes a 35-foot tall, steel frame lookout tower erected in 1917, an observer's cabin built in 1975, the remains of three observer's cabins, remains of a radar station built in the 1960s, and remnant telephone lines along the foot trail. Near the summit are two standing telecommunication/repeater towers of recent construction, which are not included in this nomination. The site is reached from the west by a foot trail dating from the nineteenth century and jeep road dating from the 1960s. The foot trail, which is included in this nomination, enters the station at its southerly edge. The jeep road, which is not included in this nomination, enters the station at its northerly edge. The boundary for the nominated property is drawn to include a 500 foot square area surrounding the tower and the full length of the foot trail and related features (e.g., culverts, swales, support and retaining walls) leading up to the tower from the base of the mountain.

Contributing resources: 4 (tower, trail, 1890s stone benchmark, and remains of 1949 observer's cabin)

Non-contributing resources: 2 (observer's cabin, remains of radar station)

The tower stands in a clearing on exposed ledge at the summit. To its immediate east and southeast are blueberry bushes. There are birch trees to the south and small trees to the west. The 35-foot tower was prefabricated by the Aermotor Corporation and erected in 1917 and is typical of the "heavier type" structures with integral staircases built by the Conservation Commission. The structure consists of a square steel and glass "cab" enclosure for observation erected atop a riveted and bolted frame of angular steel. Steel stairs divided into five flights and four landings provided access from the ground to the cab. The legs of the structure are anchored by four standard connection plates that are bolted into the exposed bedrock on the summit. Built within but independent of the lower stage of the tower is a metal-clad storage building with a shed roof added in the late twentieth century.

Situated on grade at the base of the tower are five concrete foundation slabs. The largest, L-shaped slab was the foundation of a radar station built in the 1960s. A group of three small slabs mark the sites of transformers associated with the radar station. An isolated rectangular slab marks the site of the 1949 observer's cabin.

Two trails lead away from the tower. The newer trail, constructed when the radar station was established, leads from the tower to the northeast toward the existing observer's cabin, which is sited in a sheltered area site immediately below the summit. This single story rustic dwelling was erected in 1975 and is classified as a non-contributing element due to its age. Below this, the trail widens to a primitive jeep trail leading down to the hamlet of Blue Mountain Lake. This trail was opened in the 1960s to serve the radar station, and remains in use to service several communications towers near the summit, but it is not a contributing resource. The older of the two trails is a contributing feature. It leaves the tower toward the southeast, switching back toward the west

See continuation sheet

**United States Department of the Interior
National Park Service**

**National Register of Historic Places
Continuation Sheet**

Blue Mountain Fire Observation Station
Hamilton County, New York

Section number 7 Page 2

as it descends approximately 4 miles to the trailhead on Route 30. Remnants of the original telephone line are visible from the trail for approximately 100 yards below the summit.

The jeep trail is kept open to service the telecommunication equipment at the summit. The hiking trail is maintained by the NYS Department of Environmental Conservation and remains in active recreational use. The observer's cabin is boarded up and unoccupied, but is in fair condition. The tower is intact and has recently undergone repairs with the participation of NYSDEC, Hamilton County Cooperative Extension, the Town of Indian Lake, and the SUNY College of Environmental Science and Forestry. The work included replacement of the stair treads with new wood matching the dimension of the original treatment.

See continuation sheet

8 Statement of Significance

Applicable National Register Criteria

(Mark "x" in one or more boxes for the criteria qualifying the property for National Register listing.)

- A Property is associated with events that have made a significant contribution to the broad patterns of our history.
B Property is associated with the lives of persons significant in our past.
C Property embodies the distinctive characteristics of a type, period or method of construction or represents the work of a master, or possesses high artistic values, or represents a significant and distinguishable entity whose components lack individual distinction.
D Property has yielded, or is likely to yield, information important in prehistory or history.

Criteria considerations

(mark "x" in all the boxes that apply.)

Property is:

- A owned by a religious institution or used for religious purposes.
B removed from its original location.
C a birthplace or grave.
D a cemetery.
E a reconstructed building, object or structure.
F a commemorative property.
G less than 50 years of age or achieved significance within the past 50 years.

Areas of Significance

(Enter categories from instructions)

- Engineering
Recreation
Conservation
Architecture

Period of Significance

1890s - 1950

Significant Dates

1917; 1927; 1949

Significant Person

(Complete if Criterion B is marked above)

N/A

Cultural Affiliation

N/A

Architect/Builder

Aermotor Corporation (tower manufacturer)

Narrative Statement of Significance

(Explain the significance of the property on one or more continuation sheets.)

9. Major Bibliographical References

Bibliography

(cite the books, articles, and other sources used in preparing this form on one or more continuation sheets.)

Previous documentation on file (NPS):

- preliminary determination of individual listing (36 CFR 67) has been requested
previously listed in the National Register
previously determined eligible by the National Register
designated a National Historic Landmark
recorded by Historic American Buildings Survey #
recorded by Historic American Engineering Record #

Primary location of additional data

- State Historic Preservation Office
Other State agency
Federal agency
Local government
University
Other

Name of repository:

NYSDEC, 50 Wolf Rd., Albany, NY

United States Department of the Interior
National Park Service

National Register of Historic Places
Continuation Sheet

Blue Mountain Fire Observation Station
Hamilton County, New York

Section number 8 Page 1

The **Blue Mountain Fire Observation Station** is a component in the multiple property submission, **Fire Observation Stations of the NYS Forest Preserve**. It was identified as a historic resource in an unpublished inventory prepared by NYSDEC in 1991. Subsequently, with assistance from the New York State Office of Parks, Recreation and Historic Preservation, Field Services Bureau, the Blue Mountain Fire Observation Station was identified as meeting the criteria for listing on the State/National Register of Historic Places. Additional contextual information for the Blue Mountain Fire Observation Station can be found in Sections **E: 1A *Recreation and Conservation in the Adirondacks and Catskills before the Forest Preserve, 1830-1885***; **E:1D *Rethinking Forest Fire Protection, 1909-1915***; **E:1F *Conservation as a Social Service: Managing Recreation and Resource Protection with Fire Observation Stations, 1915-1930***; **E: 2A *Prototypical Observation Towers, 1870 - c1917***; **E:2B *Temporary Fire Observation Stations, 1909-1916***; **E:2C *Standardized Fire Observation Stations, 1916-1932***; **E:2E *Decommissioning and Abandonment of the Fire Observation System 1951-1991***; and **E:2F *Adoption and Preservation of the Fire Observation Stations, 1992-2000*** of the Multiple Property Documentation Form. Additional associated property type information can be found in **Section F:1 *Steel Towers***; **F:2 *Observer Cabins and Outbuildings***; and **F:3 *Trail and Road Features*** of the Multiple Property Documentation Form.

Statement of Significance

The **Blue Mountain Fire Observation Station** is significant under criteria A and C for its association with the New York State Forest Preserve and as a representative example of an early twentieth century fire observation tower with the site of an associated observer's cabin.

The existing steel structure is the third tower on the summit. By the 1870s, primitive trails to the summit, then called Mt. Emmons, had been established by local guides, including Mitchell Sabattis. Soon thereafter, in 1870, 1873, and 1876, Verplanck Colvin, Superintendent of Survey for the State of New York, visited the mountain in the course of his topographical expeditions. Colvin made barometric readings from the thickly forested summit during his first ascent, when he selected the site as an observation station. "This peak," Colvin observed in 1876, "...commanded a view of all the more important mountain stations in the southern centre of the wilderness."¹ During the 1873 expedition, his crew erected a rustic signal tower and cleared alleys through the trees to permit measurement of adjacent peaks.

¹Quoted in Hochschild, p. 74.

United States Department of the Interior
National Park Service

National Register of Historic Places
Continuation Sheet

Blue Mountain Fire Observation Station
Hamilton County, New York

Section number 8 Page 2

"The view northward was beautiful," he reported to the legislature, "the cluster of high peaks surrounding Mt. Marcy, sharp in outline, were whitened, as with snow, and between us and them was stretched a dark billowy sea of lesser mountains, among which we detected familiar mountain landmarks, from here appearing changed and new... At the east our more southern stations were visible - Van de Whacker Mountain and the Chain Lakes -- and southward, through a long lane cut in the timber, Snowy Mountain."²

The visibility of the peak from other stations also led Colvin to establish it as "the referring station for Albany observatory time," where a powder flash scheduled at 9 p.m. during July through mid-September, 1876 coordinated time-keeping among the other stations. The measuring teams established lean-to shelters at the summit, of which there are no extant remains. A stone benchmark placed by the Colvin survey in the 1890s remains in place approximately 25 yards north of the tower. It is a small rectangle with illegible text bordered by a yellow margin containing symbols of unknown meaning.³

The trail cleared in 1876 was wide enough to carry the theodolite to the summit and to permit Colvin to make an ascent on horseback.⁴ After Colvin, the summit became a destination for recreational hiking by guests at the hotels in Blue Mountain Lake.⁵ By the end of the 1870s, the view from the signal station was being enjoyed by tourists and was helping to shape a positive popular attitude toward the forest according to a published account of an ascent of the mountain:

....we came to a "timber slash" of ten or fifteen acres, where the trees had been felled to give an unobstructed view in every direction. In the midst of this opening, founded upon primeval rock which bears the surveyor's cabalistic characters ineradicably sunk into the solid mass, is erected a tall, steeple-like skeleton structure strongly-braced timbers, on the top of which is fastened the signal of bright tin, which can be seen flashing in the sun many miles away, from valley and mountain peak.....Upon these timbers we climbed, and perching there, twenty feet from the rocks beneath, gazed in every direction upon a wonderful scene. Until then we had never properly conceived of the grandeur of this remarkable region, nor the "general plan," of the mountains, lakes and rivers of the Adirondack wilderness. It is forest every where, and mountain, lake and river repeated on every hand; and all these are seen, I

²Quoted in Hochschild, p. 73.

³"Blue Mountain Firetower."

⁴Hochschild, pp. 75-77.

⁵E. Bierstadt photograph in Hochschild, p. 54.

United States Department of the Interior
National Park Service

National Register of Historic Places
Continuation Sheet

Blue Mountain Fire Observation Station
Hamilton County, New York

Section number 8 Page 3

imagine, with something of the effect produced upon the mind of the beholder by looking down upon these features of nature from a balloon.⁶

After the signal tower had fallen and the alleys had grown back, recapturing Colvin's lost view provided the impetus for erecting the second tower on the summit in 1907. It was a 35' rustic observation tower, paid for by public subscription. Prof. J.M. Taylor of Colgate University and E. H. Haven of New York led the subscription drive. The tower was built by M. Tyler Merwin, proprietor of the Blue Mountain Hotel. As pictured in *Forest & Stream*, the tower was a sturdy rustic structure built with four log pole legs secured with pole cross braces and approached by a polework ladder.⁷ This observation tower was assumed into the state's fire observation system in September, 1911. It was one of 16 stations added to the system during the third year of the state's program, bringing the total number of stations to 36.⁸

The existing 35-foot Aermotor steel tower was constructed in 1917. The tower was one of 13 new steel towers that year and one of the first 12 described as a heavier type equipped with steel stairs. "Our experience with the towers purchased in 1916 demonstrated that greater satisfaction could be procured by using a heavier type tower, equipped with stairs, instead of the ladders which were on the 1916 towers."⁹ The last of the lighter type was erected that year, along with 11 other heavier type towers installed at: Adams, Belfry, Cat, Catamount, Hunter, Loon Lake, Lyon, Poke-O-Moonshine, Rondaxe, Snowy and Tremper. Practically all the labor in erecting the towers was performed by members of the ranger force. The average cost of the towers, including purchase, transportation and expense of erection, excluding ranger labor, was about \$530. In 1920, an Osborne Fire Finder panoramic map for use with alidade was prepared and installed in the cab.

At least four observer's cabins, including the existing one, have been built at the station. A log cabin built in 1917 southeast of the tower, was one of seven built throughout the system that year.¹⁰ Its site is marked by a few

⁶A. Judd Northrup. *Camps and Tramps in the Adirondacks, and Grayling Fishing in Northern Michigan: A Record of Summer Vacations in the Wilderness* (Syracuse, NY: Davis, Barden & Co., 1880), pp. 208-209.

⁷Juvenal, "Appreciation;" Juvenal, "Tower." A photograph of this tower captioned "probably about 1890" is in Hochschild, p. 49. The NHLR certificate indicated that the wood tower was built in 1911.

⁸State of NY Conservation Commission, *First Annual Report for the Year 1911, Vol. I: Division of Lands and Forests*. Albany: The Argus Co., 1912.

⁹NYS Conservation Commission, *Ninth Annual Report for the Year 1919*, Albany: JB Lyons, 1920

¹⁰The others were built at Hurricane, Hadley, Kempshall, Rondaxe, Tremper and TwaddellNYS Conservation Commission. *Report for the Year 1917*. Albany: J.B. Lyon, 1918, pp. 68-69.

United States Department of the Interior
National Park Service

National Register of Historic Places
Continuation Sheet

Blue Mountain Fire Observation Station
Hamilton County, New York

Section number 8 Page 4

logs.¹¹ A new cabin was built to the north of the log cabin in 1927. It was one of six built that year following plans for a new "standard" observer's cabin. "This new construction is essential to properly house employees. The prominence of observer's stations warrants the adoption of the present standard type cabin. Eventually all old cabins will be replaced with the new type of building."¹² The others built this year were at Crane, Rondaxe, Pillsbury, Fort Noble (all within the preserve) and Gilles Hill (outside). The new standard cabin was described as "modern, sanitary quarters. As observers are required to be on duty at all times during the fire season, comfortable quarters are as essential for the efficient operation of the station as suitable towers."¹³ The cabin remained standing in 1949 when a new cabin was built across from it to its west. This cabin was a wood frame building measuring 16' by 20' and situated close to the base of the tower. It was occupied by observer Gerald Vineall during 1950. The cabin was described as deteriorated when it was demolished in the late 1970s.¹⁴ Its foundation survives at the base of the tower. The cabin was replaced by the existing cabin located northeast of the tower. It is a new standard NYSDEC design cabin constructed by 1975.¹⁵

A Cold War era radar station was added to the site in 1957. It included a building sited at the base of the tower to its southwest and three emergency generators sited to the northwest. The radar station was obsolete by the time it was completed in 1961 and subsequently removed. Its remains include the building's L-shaped concrete slab, three rectangular concrete slabs for the generators, and a rusted disk at the base of the antenna mast.¹⁶ To the east and west of the tower stand repeater/communications towers and related structures of recent construction.

The site functioned as a fire observation station until it was abandoned by NYSDEC in 1990. In 1993, the Adirondack Mountain Club launched efforts to preserve the historic fire towers in cooperation with other groups by calling a meeting to discuss the possibility of repairing and reopening the tower on Blue Mountain.¹⁷ The site was selected because of its popularity (15,000 hikers per year), the age of the tower, and its proximity to the

¹¹Gerald R. Vineall to Hallie Bond, manuscript, n.d. [c 1995]. [AM].

¹²NYS Conservation Commission. *Report for the Year 1927*. Albany: J.B. Lyon, 1928, p. 188.

¹³NYS Conservation Commission. *Report for the Year 1928*. Albany: J.B. Lyon, 1929, p. 112.

¹⁴NYSOGS.

¹⁵NYSOGS.

¹⁶"Blue Mountain."

¹⁷Craig.

United States Department of the Interior
National Park Service

National Register of Historic Places
Continuation Sheet

Blue Mountain Fire Observation Station
Hamilton County, New York

Section number 8 Page 5

Adirondack Museum. The idea was to use the project as a demonstration to provide an object lesson for other groups interested in preserving towers. Cornell Cooperative Extension of Hamilton County assumed leadership of an ad hoc committee made up of representatives from Adirondack Architectural Heritage, Adirondack Discovery, Adirondack Ecological Center, Adirondack Mountain Club, NYSDEC, Finch Pruyn & Co, Forest Fire Lookout Association, Hamilton County, and the Town of Indian Lake. Through the efforts of the Town of Indian Lake and NYSDEC, the tower was repaired and reopened to the public in 1995. Repairs included replacing steel steps with wood treads.¹⁸ The tower was staffed by a student from the SUNY Environmental Science and Forestry Interpretive Internship Program with funds secured through Hamilton County and private donations.¹⁹ In 1995, the Blue Mountain Fire Tower became the eighth structure in New York State to be included in the National Historic Lookout Register.²⁰

¹⁸Briggs, "Blue," Karlin

¹⁹Jennings.

²⁰NH Lookout Register sponsored by American Resources Group, Vienna, VA US 109, NY #08.

See continuation sheet

United States Department of the Interior
National Park Service

National Register of Historic Places
Continuation Sheet

Blue Mountain Fire Observation Station
Hamilton County, New York

Section number 9 Page 1

Major Bibliographical References

"A Room with a view." *Adirondack Life*, June, 1993, p. 16.

Aber, Frederick. "Fire-Control Observation Towers in Hamilton County, State of New York," typescript, 1984, 5 pp. [NYSOPRHP].

"Adirondack Firetowers get new lease on life." *Adirondack Explorer*, Aug, 1998, 14-15.

"Blue Mountain Firetower: A Guide to Being a Guide on Blue Mountain," unpublished photocopy typescript, no date [1990s] [ADK]

Briggs, James. "Blue Mountain Fire Tower will reopen." *Hamilton County News*, July 5, 1994, 3.

_____. "The Firetower on Blue Mountain: Partnerships at Work," unpublished photocopy typescript, no date [ADK].

Craig, Ellen. "Fire Tower may greet climbers again." *Hamilton County News*, Feb 2, 1993.

Ferrer, Saul G. "Public rescue of firetower sought." *Plattsburgh Press-Republican*, 3/7/96.

Hochschild, Harold K. *An Adirondack Resort in the Nineteenth Century: Blue Mountain Lake 1870-1900 Stagecoaches and Luxury Hotels*. Blue Mountain Lake, NY: Adirondack Museum, 1962.

Jennings, Virginia, "Guide staffing tower." [Glens Falls] *Post Star*, July 21, 1994, B11.

Juvenal, pseud. "Appreciation of Nature," *Forest & Stream*, 69:612, Oct. 19, 1907.

_____. "The Tower on Blue Mountain," *Forest & Stream*, 71:850, Nov. 28, 1909.

Karlin, Rick. "Renovating Adirondack lookouts a tall order." *Albany Times Union*, Aug. 2, 1998, A3.

NYS Office of General Services, "Declaration of Surplus Building" [re: request by NYSDEC to demolish Blue Mountain observer's cabin], 12/2/1975, authorized 1/27/76. [NYSDEC Bureau of Real Property]

Northrup, A. Judd. *Camps and Tramps in the Adirondacks and Grayling Fishing in Northern Michigan: A Record of Summer Vacations in the Wilderness*. Syracuse, NY: Davis, Bardeen & Co., 1880.

See continuation sheet

United States Department of the Interior
National Park Service

National Register of Historic Places
Continuation Sheet

Blue Mountain Fire Observation Station
Hamilton County, New York

Section number 9 Page 2

O'Kane, Walter Collins. *Trails and Summits of the Adirondacks*. New York and Boston, 1928, pp. 272-275.

Russell, Matthew. "Cooperative effort restores Blue Mt. fire tower." *Adirondack Daily Enterprise*, Feb. 11, 1995, p. 28.

See continuation sheet

01001035

10. Geographical Data

Acreage of property 14.56 acres

UTM References

(Place additional UTM references on a continuation sheet.)

Table with 4 columns: Zone, Easting, Northing. Rows 1-4.

See continuation sheet

Verbal Boundary Description

See attached map

Boundary Justification

Boundaries were drawn to include the extant resources historically associated with the observation station; i.e., tower, base camp area, stone benchmark, remains of observer's cabin and hiking trail and related features such as culverts, swales support and retaining walls. Boundary includes a 500/sf area surrounding the tower and a 15-foot buffer from the center line on either side of the 4-mile long hiking trail leading from the base of the mountain to the station's site.

11. Form Prepared By

Name/title Wes Haynes, consultant (edited by: L. Garofalini, NYSOPRHP, Box 189, Waterford, NY 12188-0189)
organization Adirondack Architectural Heritage date 5/19/00 (ed. 3/01)
street & number 1790 Main St., Civic Center, Rm. 312 telephone 518-834-9328
city or town Keeseville state NY zip code 12944

Additional Documentation

Submit the following items with the completed form:

Continuation Sheets

Maps

- A USGS map (7.5 or 15 minute series) indicating the property's location.
A Sketch map for historic districts and properties having large acreage or numerous resources.

Photographs

Representative black and white photographs of the property.

Additional items

(Check with the SHPO or FPO for any additional items)

Property Owner

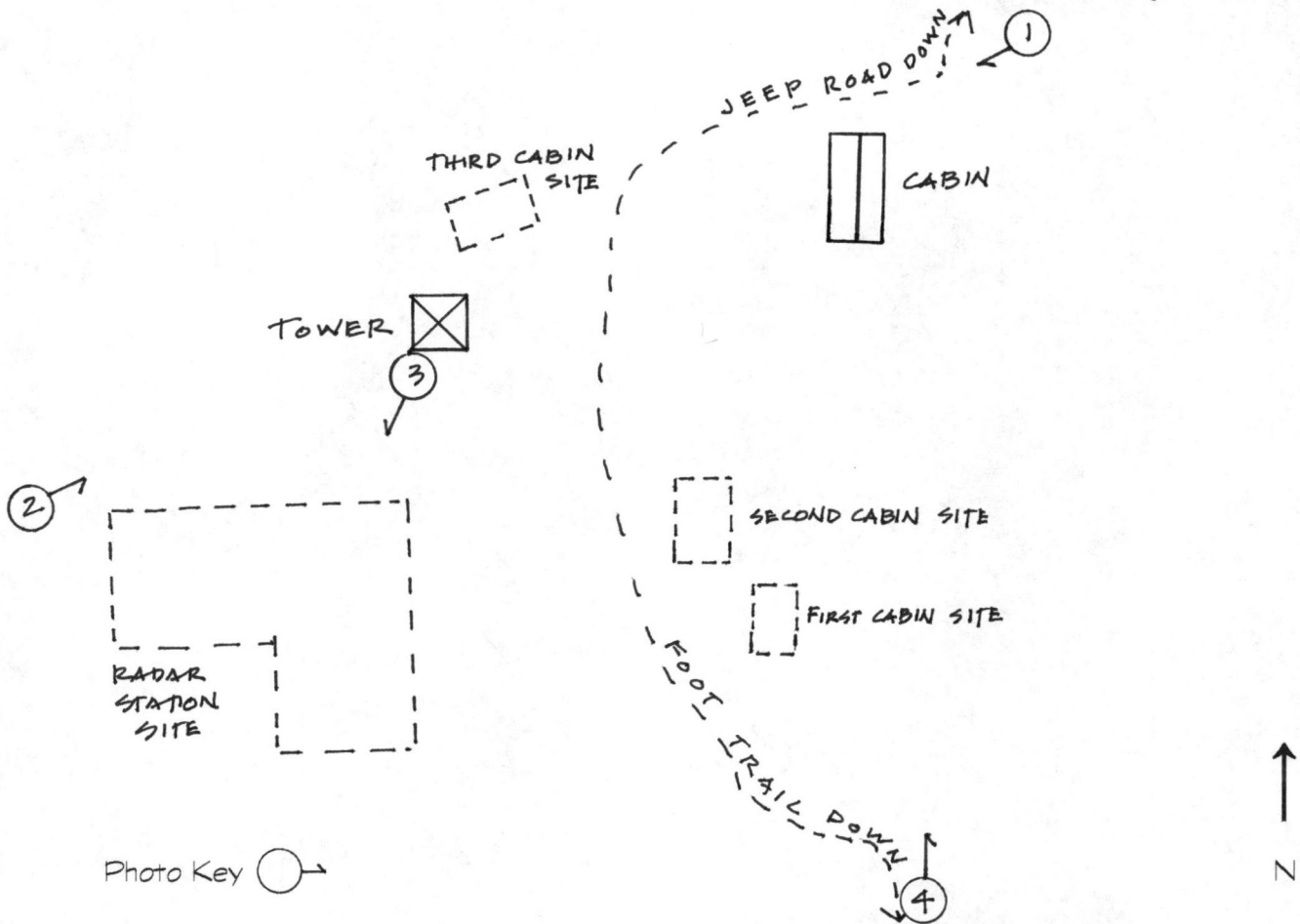
(Complete this item at the request of the SHPO or FPO.)

name New York State (Department of Environmental Conservation)
street & number 50 Wolf Rd. telephone 518-457-7433
city or town Albany state NY zip code 12233

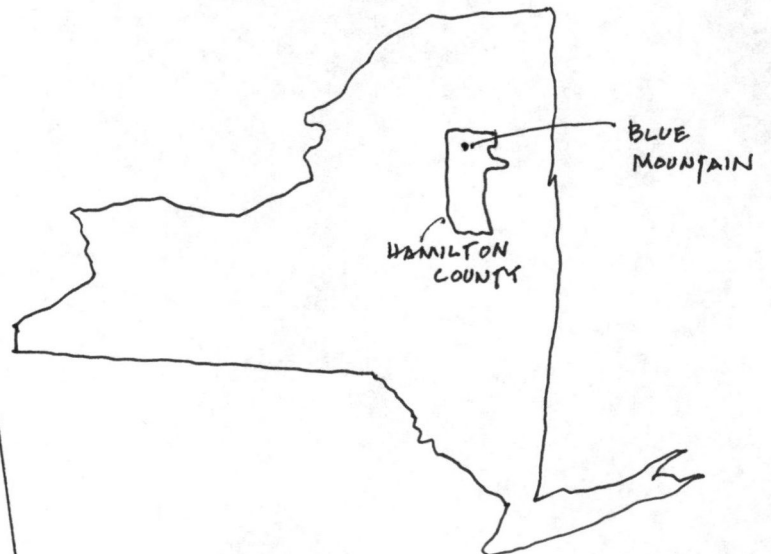
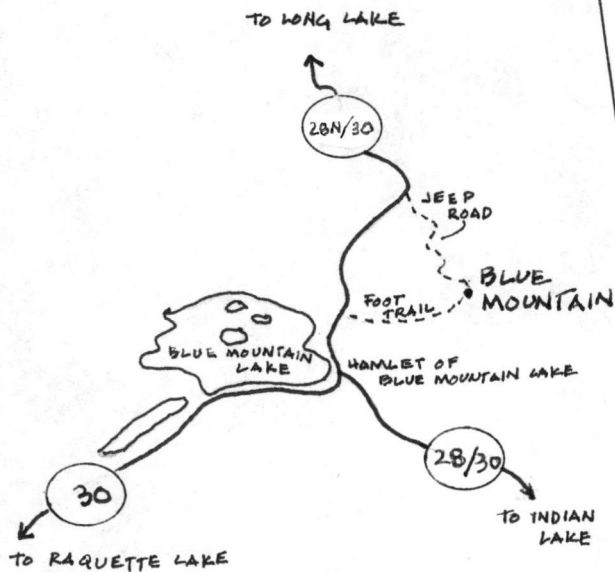
Paperwork Reduction Act Statement: This information is being collected for applications to the National Register of Historic Places to nominate properties for listing or determine eligibility for listing, to list properties and to amend existing listings. Response to this request is required to obtain a benefit in accordance with the National Historic Preservation Act, as amended (16 U.S.C.470 et seq.)

Estimated Burden Statement: Public reporting burden for this form is estimated to average 18.1 hours per response including time for reviewing instructions, gathering and maintaining data and completing and reviewing the form. Direct comments regarding this burden estimate or any aspect of this form to the Chief, Administrative Services Division, National Park Service, P.O. Box 37127, Washington, DC 20013-7127; and the Office of Management and Budget, Paperwork Reductions Projects (1024-0018), Washington, DC 20503.

The Blue Mountain Fire Observation Station
Indian Lake, Hamilton County, New York



SKETCH MAP (not to scale), 1999
W. Haynes, del.





Blue Mtn. Fire Observation Station
~~© 1994~~ Town of Indian Lake
Hamilton County, NY

001 058 NNNC XXR 10*04*01 ELITE PHOTO

Photo 1



Blue Mtn. Fire Observation Station
Town of Indian Lake
Hamilton County, NY

003 058 NNNC --- 10 04 01 ELITE PHOTO

Photo #2



Blue Mtn. Fire Observation Station
Town of Indian Lake
Hamilton County, NY

Photo 4 telephone line remains

002 058 NNNC --- 10.04.01 ELITE PHOTO

Missing Core Documentation

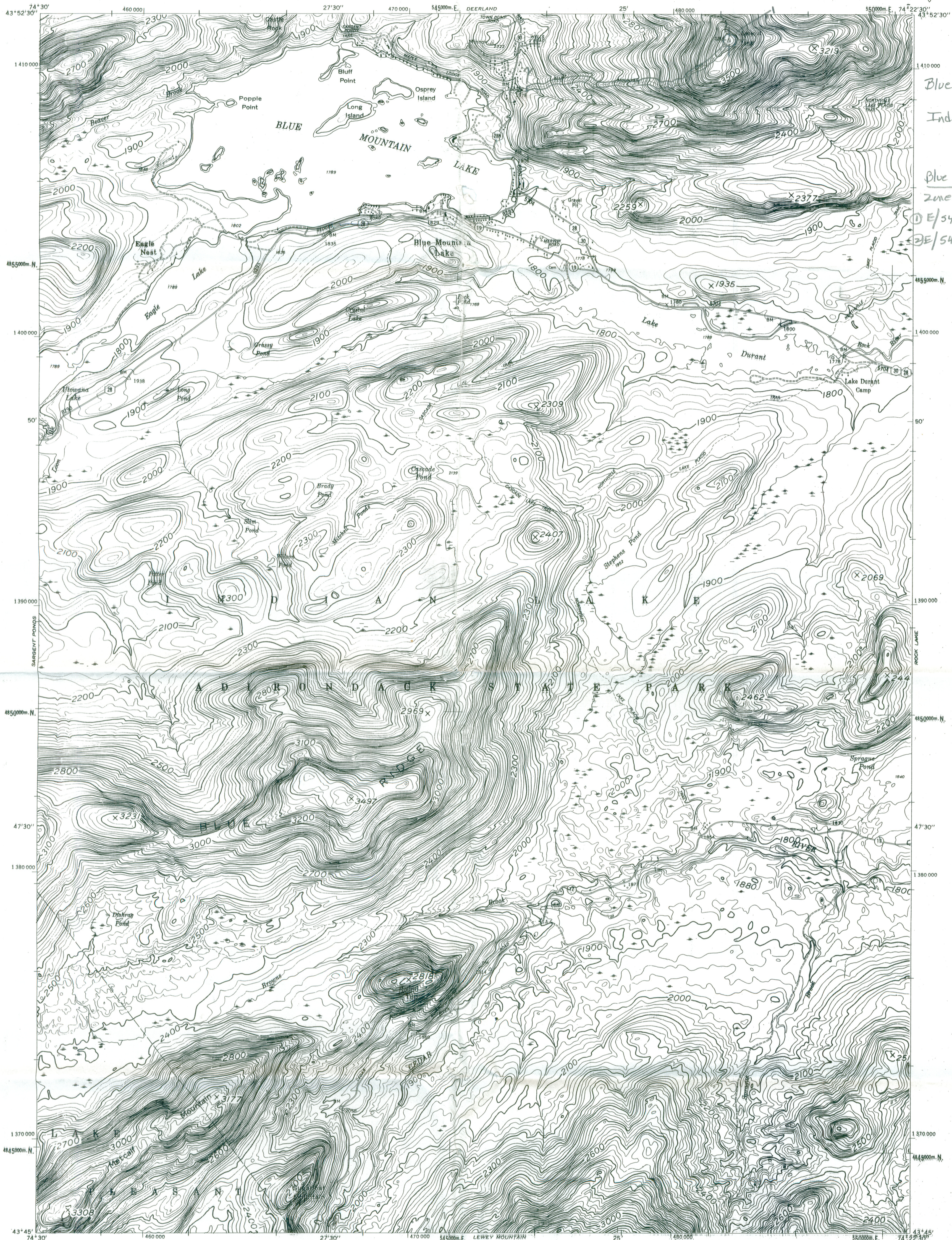
Property Name County, State	Multiple Property Name	Reference Number
Blue Mountain Fire Observation Station Hamilton, NY	Fire Observation Stations of New York State Forest Preserve MPS	01001035

The following Core Documentation is missing from this entry:

Nomination Form

Photographs (#3)

USGS Map



Blue Mountain Fire Observation
STATION

Indian Lake, Hamilton County
NY

Blue Mountain Quad

Zone: 18

10 E/548084 N/4857642

20 E/545751 N/4857082

Prepared and published by the New York State Department of Transportation
in cooperation with the U.S. Department of Transportation, Federal
Highway Administration, Bureau of Public Roads.

Map base, physical and cultural details compiled from U.S. Geological
Survey 15-minute quadrangle, edition of 1954; highways and drainage
related to highway construction compiled in 1959 from construction
plans, aerial photography dated 1959 and various other sources; road
and street names and boundaries compiled from D.O.T. surveys
and public records.

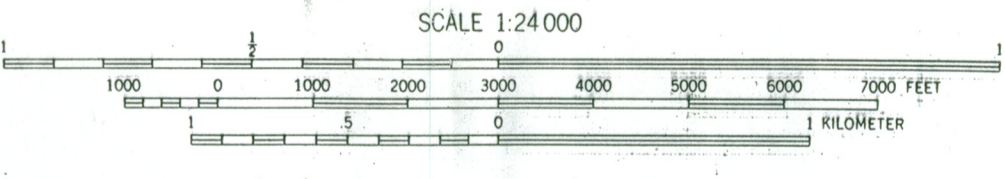
Map does not necessarily comply with National Map Accuracy
Standards.

Official changes in boundaries, names and planimetric features
should be reported to: Map Information, New York State
Department of Transportation, State Campus, Albany, N.Y. 12226

SPECIAL TOPOGRAPHIC EDITION
Contours, at 20-foot intervals, shown unrevisted from 1954
U.S. Geological Survey map. Datum is mean sea level.



QUADRANGLE LOCATION



Polyconic projection, 1927 North American datum.

5,000-meter graticule based on U.T.M. grid, Zone 18.

10,000-foot ticks based on New York State Plane Coordinate System,
East Zone

BOUNDARIES:

- State
- County
- Town
- City or Incorporated Village
- Federal-aid approved Urban Area
- Supplemental map enlargement limit

ROADS:

- Interstate route
- U. S. route
- State route
- County Road
- State Highway number and name
- Divided highways:
Main more than 25 feet
- Main 25 feet or less
- Unimproved highways:
4 or more lanes
- 2 or 3 lanes
- Private roads



Blue Mountain Fire Observation Station
Indian Lake, Hamilton County, NY

MN
14°

