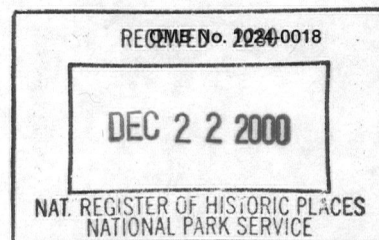


United States Department of the Interior
National Park Service

National Register of Historic Places
Registration Form



This form is for use in nominating or requesting determinations of eligibility for individual properties or districts. See instructions in *How to Complete the National Register of Historic Places Registration Form* (National Register Bulletin 16A). Complete each item by marking "x" in the appropriate box or by entering the information requested. If an item does not apply to the property being documented, enter "N/A" for "not applicable." For functions, architectural classification, materials and areas of significance, enter only categories and subcategories listed in the instructions. Place additional entries and narrative items on continuation sheets (NPS Form 10-900a). Use a typewriter, word processor, or computer, to complete all items.

1. Name of Property

historic name Rivoli Theatre

other names/site number _____

2. Location

street & number NY 42 and Laurel Avenue

☐ not for publication

city or town South Fallsburg

☐ vicinity

state New York

code NY

county Sullivan

code 105

zip code 12779

3. State/Federal Agency Certification

As the designated authority under the National Historic Preservation Act, as amended, I certify that this ☒ nomination ☐ request for determination of eligibility meets the documentation standards for registering properties in the National Register of Historic Places and meets the procedural and professional requirements set forth in 36 CFR Part 60. In my opinion, the property ☒ meets ☐ does not meet the National Register criteria. I recommend that this property be considered significant ☐ nationally ☐ statewide ☒ locally. ☐ See continuation sheet for additional comments.

John A. Alden
Signature of certifying official/Title

6 December '00
Date

State or Federal agency and bureau _____

In my opinion, the property ☐ meets ☐ does not meet the National Register criteria. ☐ See continuation sheet for additional comments.

Signature of certifying official/Title _____

Date _____

State or Federal agency and bureau _____

4. National Park Service Certification

I hereby certify that this property is:

☒ entered in the National Register.
☐ See continuation sheet.

☐ determined eligible for the
National Register.
☐ See continuation sheet.

☐ determined not eligible for the
National Register.

☐ removed from the National
Register.

☐ other, (explain:) _____

Signature of the Keeper

Date of Action

Edson H. Beal

1-26-01

Rivoli Theatre

Name of Property

Sullivan County, New York

County and State

5. Classification

Ownership of Property

(Check as many boxes as apply)

- ☒ private
- ☐ public-local
- ☐ public-State
- ☐ public-Federal

Category of Property

(Check only one box)

- ☒ building(s)
- ☐ district
- ☐ site
- ☐ structure
- ☐ object

Number of Resources within Property

(Do not include previously listed resources in the count.)

Contributing	Noncontributing	
1	0	buildings
0	0	sites
0	0	structures
0	0	objects
1	0	Total

Name of related multiple property listing

(Enter "N/A" if property is not part of a multiple property listing.)

N/A

Number of contributing resources previously listed in the National Register

0

6. Function or Use

Historic Functions

(Enter categories from instructions)

RECREATION AND CULTURE/theater

Current Functions

(Enter categories from instructions)

RECREATION AND CULTURE/theater

7. Description

Architectural Classification

(Enter categories from instructions)

Late 19th and early 20th century revivals

Materials

(Enter categories from instructions)

foundation concrete

walls brick, concrete

roof asphalt

other

Narrative Description

(Describe the historic and current condition of the property on one or more continuation sheets.)

United States Department of the Interior
National Park Service

Rivoli Theatre
South Fallsburg, Sullivan County, NY

National Register of Historic Places Continuation Sheet

Section number 7 Page 1

The Rivoli Theatre is located on the west side of NY 42 in the small Sullivan County hamlet of South Fallsburg. NY 42 is the major north-south route through South Fallsburg and the theater is located in the center of the hamlet, in the heart of the main commercial district. The Rivoli occupies a rectangular, corner site, with its facade oriented to the main street and its south side elevation oriented to Laurel Avenue. There is an empty lot adjacent to the theater on its north side; this lot originally provided parking spaces for theater patrons. In general, the neighborhood is a densely built-up area of buildings used for commercial, residential and domestic uses. The South Fallsburg commercial area has been determined to have potential for National Register listing.

The theater includes two distinct sections, a two-story, six-bay by three-bay front section containing the foyer and lobby, which faces the street, and a long, one-story, seven-bay auditorium extending behind it. The building is constructed of concrete block. The facade is clad in buff and red bricks, with red coursing and details. Side and rear elevations are parged and divided into bays by brick piers. The roof of the front section is concealed behind a parapet, while the auditorium is sheltered by a gable roof; both are clad in asbestos shingles.

The Rivoli Theatre is the product of two distinct building phases, its original construction in 1923 and an expansion and remodeling in 1937. The facade is symmetrical, divided into thirds both vertically and horizontally. On the first story, the marquee and theater entrance are flanked by storefronts on either side. The storefronts retain their original configurations and multi-pane glass transoms. Both have original single-pane glass panels; on the south, a multi-pane door replaced the original in c1937. The 1923 marquee was a simple rectangular iron canopy with decorative metal cresting and opaque glass tiles. In 1937, this was replaced (or concealed) by a square neon sign with an elaborate decorative crest. The current canopy is a three-sided, neon sign dating to the 1950s. All three signs were carried by metal chains; the contemporary ones may be the originals. The large vertical neon sign above the marquee is original. Although it has not been investigated, it is possible that some portion of the original canopy survives the current one. The recessed entrance also reflects two construction phases. In the original design, the ticket booth was rectangular and projected a considerable distance into the foyer. It was apparently of wood construction employing classical motifs and

United States Department of the Interior
National Park Service

Rivoli Theatre
South Fallsburg, Sullivan County, NY

National Register of Historic Places Continuation Sheet

Section number 7 Page 2

embellished with opaque glass tiles. The entrance doors appear to have been of multi-pane glass and the walls were divided into panels, some doubling as poster frames. The 1937 foyer, which is intact today, has a tiled floor and enameled and chrome siding. Each side wall has a frame for movie posters. Two sets of wood and glass doors with geometric patterns flank a center ticket booth. The latter is round and finished with chrome and glass. Above the glass booth, the circular form rises to the ceiling. Two large decorative frames for movie posters on the brick pilasters that define the entrance bay have been removed.

On the second story, the six windows are arranged in two groups: two equally spaced windows on each end and a pair of closely spaced windows in the center. Openings contain original wood-frame windows, with six-over-one double-hung sash. The third vertical section, above the second story, is brick, with banding and diamond-shaped ornaments indicating the horizontal division. This is surmounted by a corbeled brick cornice and concrete cap. The center third rises to a stepped pediment defined by small brick piers, also corbeled, which rise above it. The side elevations of the two-story section are undecorated; each features three second-story windows identical to those on the facade.

The interior is divided into a lobby, a lounge room and a large auditorium. The lobby and lounge retain their original spatial configurations and some details but are finished in non-historic materials. The auditorium was constructed in two stages. The original space was 124 feet long and its decorative scheme is unknown. In 1937 a 36-foot addition was added to the rear, accommodating six additional rows of seats and a stage. At the same time, the auditorium was completely redecorated in the Art Deco style. The ceiling is flat with a substantial cove along the side walls. The walls and ceiling are clad in asbestos paneling that was colored and decorated with elaborate Art Deco patterns. The design was achieved by using combinations of geometric motifs in different shapes and sizes. Each wall panel was designed around a large period electric light fixture. The 1937 scheme for the auditorium is completely intact.

United States Department of the Interior
National Park Service

Rivoli Theatre
South Fallsburg, Sullivan County, NY

National Register of Historic Places Continuation Sheet

Section number 7 Page 3

The second floor of the building was divided into spaces for offices, apartments and other uses. Materials and finishes are generally intact. The Rivoli Theatre is an extremely intact early twentieth century theater, distinguished by its successful combination of 1923 and 1937 design schemes.

Rivoli Theatre

Name of Property

Sullivan County, New York

County and State

8 Statement of Significance

Applicable National Register Criteria

(Mark "x" in one or more boxes for the criteria qualifying the property for National Register listing.)

- ☒ **A** Property is associated with events that have made a significant contribution to the broad patterns of our history.
- ☐ **B** Property is associated with the lives of persons significant in our past.
- ☒ **C** Property embodies the distinctive characteristics of a type, period or method of construction or represents the work of a master, or possesses high artistic values, or represents a significant and distinguishable entity whose components lack individual distinction.
- ☐ **D** Property has yielded, or is likely to yield, information important in prehistory or history.

Criteria considerations

(mark "x" in all the boxes that apply.)

Property is:

- ☐ **A** owned by a religious institution or used for religious purposes.
- ☐ **B** removed from its original location.
- ☐ **C** a birthplace or grave.
- ☐ **D** a cemetery.
- ☐ **E** a reconstructed building, object or structure.
- ☐ **F** a commemorative property.
- ☐ **G** less than 50 years of age or achieved significance within the past 50 years.

Narrative Statement of Significance

(Explain the significance of the property on one or more continuation sheets.)

9. Major Bibliographical References

Bibliography

(cite the books, articles, and other sources used in preparing this form on one or more continuation sheets.)

Previous documentation on file (NPS):

- ☐ preliminary determination of individual listing (36 CFR 67) has been requested
- ☐ previously listed in the National Register
- ☐ previously determined eligible by the National Register
- ☐ designated a National Historic Landmark
- ☐ recorded by Historic American Buildings Survey

- ☐ recorded by Historic American Engineering
Record # _____

Areas of Significance

(Enter categories from instructions)

entertainment/recreation

architecture

Period of Significance

1923-1937

Significant Dates

1923

1937

Significant Person

(Complete if Criterion B is marked above)

na

Cultural Affiliation

na

Architect/Builder

Emil Motel

Primary location of additional data

- ☒ State Historic Preservation Office
- ☐ Other State agency
- ☐ Federal agency
- ☐ Local government
- ☐ University
- ☐ Other

Name of repository:

United States Department of the Interior
National Park Service

Rivoli Theatre
South Fallsburg, Sullivan County, NY

National Register of Historic Places Continuation Sheet

Section number 8 Page 1

Summary

The Rivoli Theatre is significant as a distinctive intact example of a twentieth-century theater in Sullivan County. Constructed in 1923 in the small hamlet of South Fallsburg, the Rivoli is associated with the resort industry, one of the most important aspects of early twentieth century cultural history in the western Catskills. Built in 1923, the theater is an early example of a building constructed for large public gatherings, perhaps reflecting the dramatic rise in the Jewish population of South Fallsburg during the 1920s. Among Sullivan County villages, South Fallsburg is distinctive for its exceptionally large and prosperous Jewish community. The building is believed to have been designed by Emil Motel, a prominent regional architect. Motel was responsible for the design of the 1921 Rialto Theatre in Monticello, which bears a close resemblance to the Rivoli, and he is documented as the architect for the 1937 remodeling. The Rivoli is similar in design to many other public and commercial buildings built in this period in South Fallsburg and throughout the region. Typical features include concrete construction, a stepped parapeted roof, small twin towers, use of decorative brickwork and multi-pane storefronts and doors. The Rivoli, owned and operated by Israel Kaplan and his son Arch, was a tremendous success, so much so that a thirty-six foot addition accommodating another 100 seats was added in 1937. At the same time, the main entrance was altered, receiving a stylish new Art Deco design, and the marquee was embellished with a large decorative neon sign. On the interior, the auditorium was redecorated in the Art Deco mode as well, primarily through the application of tinted and patterned acoustical panels. The Rivoli Theatre retains a substantial degree of integrity and continues to house arts-related activity in South Fallsburg.

South Fallsburg

South Fallsburg, in the western Catskills, is named for the falls on the Neversink River, which are within the town boundaries. This area was originally part of the Hardenburgh Patent, a large and ill-defined expanse of land stretching between the Hudson and Delaware valleys. This patent was settled by Dutch, Scotch-Irish and English farmers, merchants and craftsmen. Before 1803, the area in which South Fallsburg is located was in the

United States Department of the Interior
National Park Service

Rivoli Theatre
South Fallsburg, Sullivan County, NY

National Register of Historic Places Continuation Sheet

Section number 8 Page 2

town of Mamakating, which also included the town of Thompson. The town of Fallsburg was established in 1826.

The hamlet of Fallsburg was settled about 1796 by three brothers, Samuel, Thaddeus, and Obadiah Brown (Neiderman 9). The Browns built a saw mill and a grist mill at the Neversink falls in c1809. The first supervisor of the town of Fallsburg was elected in 1826. Agricultural issues were the primary concerns at that time (Neiderman 18-22). The hamlet really began to prosper when a tannery was established in 1831. At that time rooming houses were built to accommodate the workers, mostly German and Irish immigrants (Neiderman 9-10). The Civil War provided a great boon for the tannery business because of the army's requirements for leather. However, this business resulted in denuding the forests because of its relentless need for hemlocks; therefore, many the tanneries had ceased operation by the mid-to-late nineteenth century.

The tanneries were the most important industry in the Fallsburg area until the after the Civil War. As early as 1830, however, Fallsburg was also known for its location on the Neversink River and the nearby streams and lakes that provided excellent trout fishing. By the late nineteenth century, the summer resort business began to supplant the tanneries as a mainstay of the Fallsburg economy. In 1871, the railroad came to Fallsburg through a tunnel under "Tunnel Hill." The New York and Oswego Midland Railroad (later known as the New York Ontario and Western Railroad, or the O & W) was directly responsible for the development and success of the resort business in Sullivan County. To support this industry, and in anticipation of increased passenger traffic, the railroad "gave special rates to builders ... carrying lumber and materials free at times" (Neiderman 51). A full-fledged resort industry flourished in Fallsburg by the late 1870s, complete with gala entertainment.

By 1886, South Fallsburg was the focal point of a fast-growing farm and boarding house resort area. "It was the arrival and departure point on the main line for a whole string of satellite resorts including Woodbourne, Thompsonville, Grahamsville, Neversink and even the busy county seat, Monticello" (Wakefield 97). In 1883, stagecoach service between Fallsburg and Monticello was initiated, and the improved Fallsburg/Monticello

☐ See continuation sheet

United States Department of the Interior
National Park Service

Rivoli Theatre
South Fallsburg, Sullivan County, NY

National Register of Historic Places Continuation Sheet

Section number 8 Page 3

turnpike (now New York State Route 42) was completed in 1886. In 1903, about the time that the first Jews arrived in Fallsburg, the railroad station was improved. Between 1886 and 1910, the Christian "resort business" (which never listed more than ten establishments in Fallsburg in *Summer Homes*) was in decline, and hotels, bungalow colonies, summer cottages and "kucheleins" were becoming the dominant types of Fallsburg hospitality (Wakefield 100). These enterprises, often run by "farmer's wives," represent Jewish forms of hospitality. Blumberg lists nearly sixty hotels and guesthouses in Fallsburg in the 1930s (Blumberg 280-81).

Jews didn't arrive in the western Catskills until c1900. These Jews emigrated from eastern Europe to escape "economic decline and physical oppression" in their homelands (Sorin 1). German Jews made every effort to disperse the eastern European arrivals as quickly as possible. Many settled in the western Catskills, where they became active first in farming and later in resort activities. In 1899, *Summer Homes*, the catalogue published by the O&W Railroad, listed Jewish proprietors in Fallsburg township for the first time. The listing was worded so as to exclude new immigrants and to encourage older, assimilated German Jews to visit (Neiderman 54). By 1906, Christian farmers and boardinghouse owners were regularly selling out to Jewish proprietors. During this period of transition, Christian hosts bluntly stated "Hebrews not Welcome." When "Hebrews" began to make an appearance in the listings in 1899, they advertised "dietary laws observed" to alert potential Jewish guests about houses in which they would be welcome (Blumberg 180-81).

A Jewish synagogue was built in South Fallsburg as early as 1902. As Jews became more involved in community affairs, synagogue minutes document a remarkable growth of the Jewish population in South Fallsburg and their increasing wealth. New members were accepted every week and seating was always a concern. That the South Fallsburg synagogue was supported from the beginning by a year-round population of merchants and journeymen is attested to by the fact that meetings were held every couple of weeks all year long. The association maintained a sick fund and the congregation took the initiative to bring a permanent doctor to South Fallsburg, calling on all citizens of the village to support him. By 1916, the South Fallsburg Hebrew

United States Department of the Interior
National Park Service

Rivoli Theatre
South Fallsburg, Sullivan County, NY

National Register of Historic Places Continuation Sheet

Section number 8 Page 4

Association had enough prosperous members to support a significant building program for the synagogue, adding a larger and more prominent facade to the building.

By the 1930s Jews dominated South Fallsburg. When Jews were not allowed to serve as volunteer firemen in Monticello, the county seat, the South Fallsburg Volunteer Firemen were nearly 100 percent Jewish. Jews dominated village governance and established a host of Jewish organizations like B'nai Brith, Hadassah, Zionist organizations and others. The prosperity of South Fallsburg's Jews continued into the 1970s, when the South Fallsburg Jewish community began to suffer reverses. The contraction of the resort industry left the businessmen and journeymen without major customers. Second and third generation children had been packed off for college and moved elsewhere. The once busy stores on Main Street closed, and the South Fallsburg Hebrew Association found itself hard-put to maintain its building.

Entertainment

Entertainment was always a very important part of the Catskills resort culture. Today, many people who lived or summered in the Catskills during the 1930s or 40s describe entertainment as a significant component of their experience. Their recollections provide information about the types, diversity and scale of local recreational opportunities, as well as their day to day effect on the lives of both the local population and the hordes of summer visitors. Many of today's informers refer to the era of the big vaudeville acts of the 1940s and most boast an association with one or more professional entertainers who got their start in the Catskills; many of these performers developed a fondness and/or a social connection to the area that kept them coming back.

During the 1910s, in the early days of the resorts, recreational activity consisted of simple, family oriented pastimes such as relaxing, enjoying the outdoors and community singing. By the 1920s, the number, scale and diversity of entertainment opportunities had increased significantly; however, they were still mainly focussed within the hotel or camp communities and were generally non-professional. Weekday entertainment included cards, sports, and small games. However, on weekends, large parties, dances, and group singing were the norm.

United States Department of the Interior
National Park Service

Rivoli Theatre
South Fallsburg, Sullivan County, NY

National Register of Historic Places Continuation Sheet

Section number 8 Page 5

Also during the 1920s, opportunities to see major vaudeville acts, stand-up comedians, bands and other professional entertainers increased significantly. Movie theaters were constructed in small towns, casinos in hotels and, later, nightclubs were established. One historian speculated that "... ninety-three percent of all the kuchaleyns [were] within walking distance of a hotel or summer camp that [had] professional entertainment and a dance band" (Gresch, in Kanfer 127). After World War II, many of the larger theatrical performances were knockoffs of Broadway plays. Plot lines from contemporary shows were borrowed and interspersed with original skits and local color to entertain the local audience.

Movies became popular with the introduction of talkies in the 1920s. In fact, movies put a number of vaudeville performers out of work and some could later be found working as crew at the movie houses. Movies remained an exceptionally popular source of entertainment through the 1930s and 40s. Patrons recall long lines of people waiting to get tickets. Their popularity and importance in these small communities is reflected in their large sizes and sophisticated designs.

Rivoli Theatre

The Rivoli Theatre was designed and built in 1923. Although its design has been attributed to Israel Kaplan and his son Arch, recent research suggests that Emil Motel, who was responsible for the 1937 remodeling, was also the architect of the original building. The design of the Rivoli is similar in a number of respects to that of the Rialto in Monticello, also designed by Motel. Although the Rivoli has been remodeled on the interior, the modest, classically inspired interior of the Rialto suggests that the Rivoli was originally designed in the same taste.. As built, the Theatre is a typical example of the kind of public and commercial buildings constructed in many Sullivan County hamlets during the early twentieth century. In South Fallsburg, there are at least four buildings on Main Street that illustrate variations of the same design and a number of others that employ similar motifs and materials. Characteristic features include the use of concrete with stucco or brick finishes, stepped parapeted roofs, often incorporating small tower-like forms, bricks in varying hues organized into branding or decorative patterns to create more fully defined architectural compositions and multi-pane windows and doors.

United States Department of the Interior
National Park Service

Rivoli Theatre
South Fallsburg, Sullivan County, NY

National Register of Historic Places Continuation Sheet

Section number 8 Page 6

The Rivoli provided seating for 600 people and was used for both vaudeville shows and movies. In 1937, the auditorium was expanded to accommodate the large crowds who packed the theater on weekends. Emil Motel and engineer James A. Smith were responsible for the alterations. A 36-foot addition to the auditorium was added, providing 100 new seats. As part of the project, several exterior features and the entire interior were redesigned in the Art Deco style, one of the most popular styles for movie theaters in this period. On the exterior, alterations were limited to the entrance, where the foyer, canopy and sign were replaced with stylish contemporary designs. On the interior, the auditorium received completely new finishes, primarily acoustical panels ornamented with complex geometric patterns. All of the alterations survive to a great extent and the building clearly represents both of its design periods.

The Rivoli is one of a group of theaters in Sullivan County that document the region's important early twentieth century entertainment history. Today, the Rivoli (along with several others in the county) is being restored and returned to use as a public arts related facility.

Rivoli Theatre

Name of Property

Sullivan County, New York

County and State

10. Geographical DataAcreage of property less than one acre**UTM References**

(Place additional UTM references on a continuation sheet.)

1	18	530159	4616187
	Zone	Easting	Northing
2			

3			
	Zone	Easting	Northing
4			

☐ See continuation sheet**Verbal Boundary Description**

(Describe the boundaries of the property on a continuation sheet.)

Boundary Justification

(Explain why the boundaries were selected on a continuation sheet.)

11. Form Prepared Byname/title Kathleen LaFrank, Program Analystorganization New York State Historic Preservation Office date August 2000street & number Peebles Island State Park, PO Box 189 telephone 518-237-8643 x 3261city or town Waterford state NY zip code 12188**Additional Documentation**

Submit the following items with the completed form:

Continuation Sheets**Maps**A **USGS map** (7.5 or 15 minute series) indicating the property's location.A **Sketch map** for historic districts and properties having large acreage or numerous resources.**Photographs**Representative **black and white photographs** of the property.**Additional items**

(Check with the SHPO or FPO for any additional items)

Property Owner

(Complete this item at the request of the SHPO or FPO.)

name Sullivan County Dramatic Workshopstreet & number PO Box 353 telephone city or town Monticello state NY zip code 12701

Paperwork Reduction Act Statement: This information is being collected for applications to the National Register of Historic Places to nominate properties for listing or determine eligibility for listing, to list properties and to amend existing listings. Response to this request is required to obtain a benefit in accordance with the National Historic Preservation Act, as amended (16 U.S.C.470 *et seq.*)

Estimated Burden Statement: Public reporting burden for this form is estimated to average 18.1 hours per response including time for reviewing instructions, gathering and maintaining data and completing and reviewing the form. Direct comments regarding this burden estimate or any aspect of this form to the Chief, Administrative Services Division, National Park Service, P.O. Box 37127, Washington, DC 20013-7127; and the Office of Management and Budget, Paperwork Reduction Projects (1024-0018), Washington, DC 20503.

United States Department of the Interior
National Park Service

Rivoli Theatre
South Fallsburg, Sullivan County, NY

National Register of Historic Places Continuation Sheet

Section number 9 Page 1

Bibliography

- Blumberg, Esterita. *Remembering the Catskills: Tales by a Recovering Hotelkeeper*. Fleischmanns: Purple Mountain Press, 1996.
- Brown, Phil. *Catskill Culture*. Philadelphia: Temple UP, 1998.
- Evers, Alf. *The Catskills: From Wilderness to Woodstock*. Woodstock: Overlook, 1992.
- Kanfer, Stefan. *A Summer World: The Attempt to Build a Jewish Eden in the Catskills, From the Days of the Ghetto to the Rise and Decline of the Borscht Belt*. New York: Farrar Straus Giroux, 1989.
- Lavender, Abraham and Clarence Steinberg. *Jewish Farmers of the Catskills*. Gainesville: UP of Florida, 1995.
- Niederman, Andrew. *The Sesquicentennial of Fallsburg Township: 1826-1976*. Town of South Fallsburgh: Niederman, 1976.
- Quinlan, James Eldridge. *History of Sullivan County*. 1873. ed and rev. David M. Gold. South Fallsburg: Marielle, 1994.
- Ravage, Jessie A. and Nina M. Versaggi. *Public Archaeology Facility Report: NY 42, Towns of Fallsburg and Thompson, Sullivan County, Architectural Report*. Binghamton: SUNY Binghamton, 2000.
- Richman, Irwin. *Borscht Belt Bungalows*. Philadelphia: Temple UP, 1998.
- Sacks, Maurie. "South Fallsburg Hebrew Association Synagogue." National Register of Historic Places Nomination Form, 2000.
- Sorin, Gerald. *A Time for Building: The Third Migration 1880-1920*. Baltimore: Johns Hopkins UP, 1992.
- Wakefield, Manville. *To the Mountains by Rail*. Fleischmann's: n.p., 1989.

United States Department of the Interior
National Park Service

Rivoli Theatre
South Fallsburg, Sullivan County, NY

National Register of Historic Places Continuation Sheet

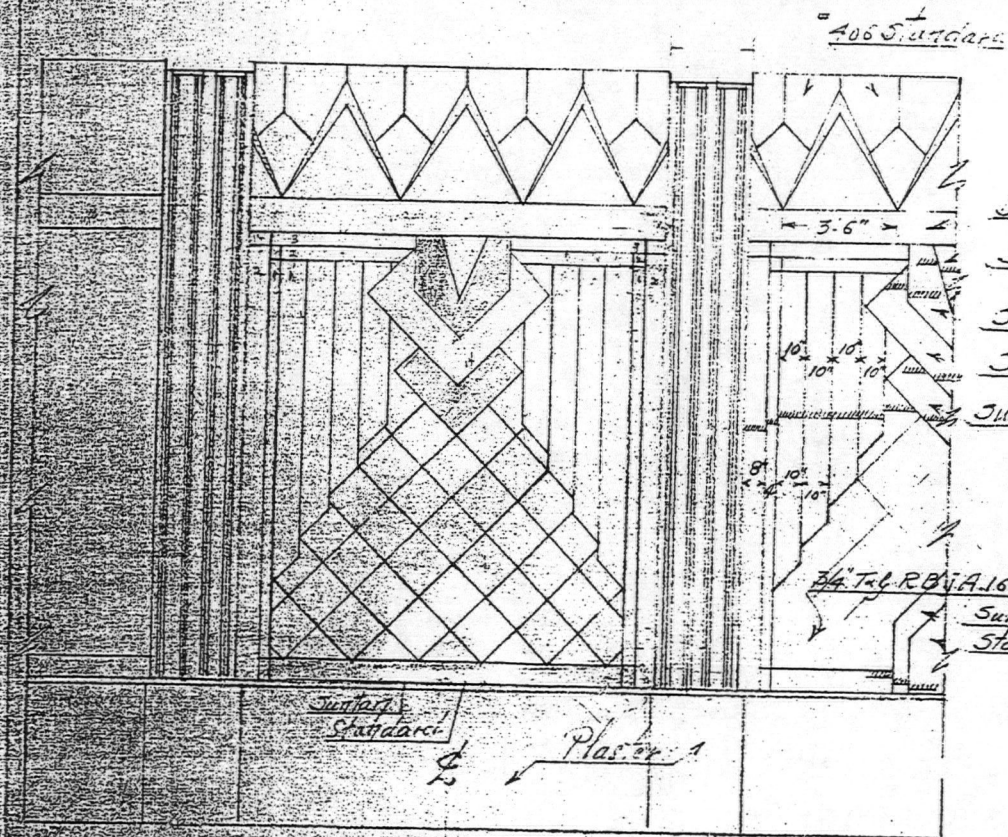
Section number 10 Page 1

Verbal Boundary Description

The boundary is indicated by a heavy line on the enclosed map with scale.

Boundary Justification

The nomination boundary encompasses the original parcel associated with the theater.



3rd Floor

Standard 1/2" Bev. Edge

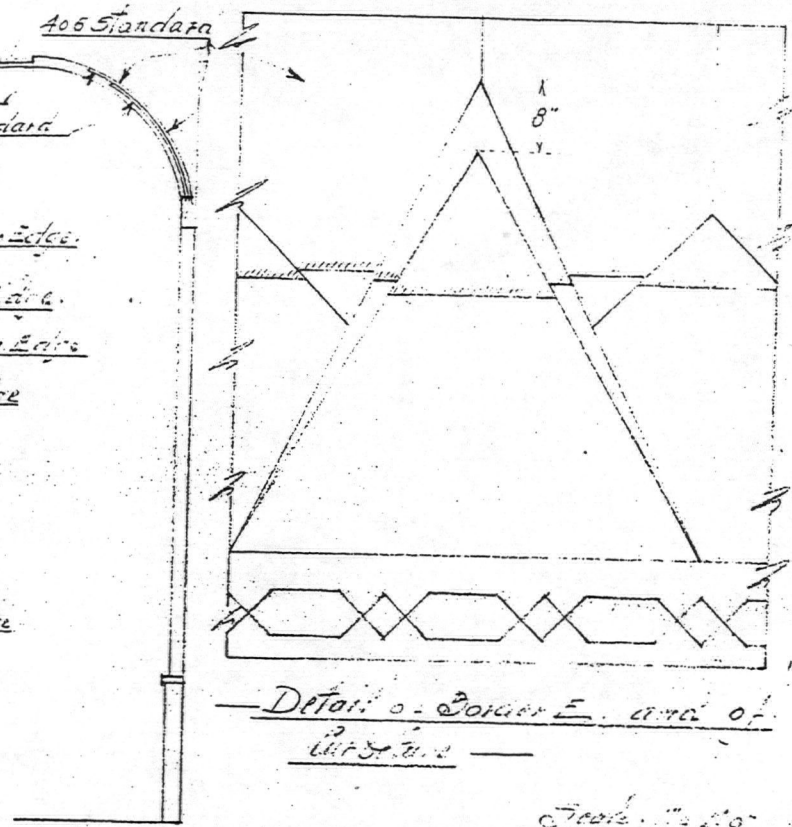
Superior 1/2" Bev. Edge

Standard 1/2" Bev. Edge

Superior 1/2" Bev. Edge

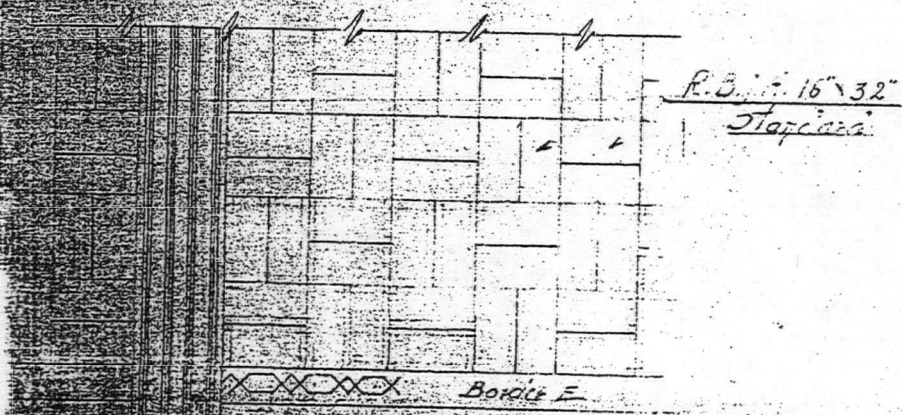
Superior Bev. Edge

Standard 1/2" Bev. Edge



Wall Treatment

Scale 1/4" = 1'-0"



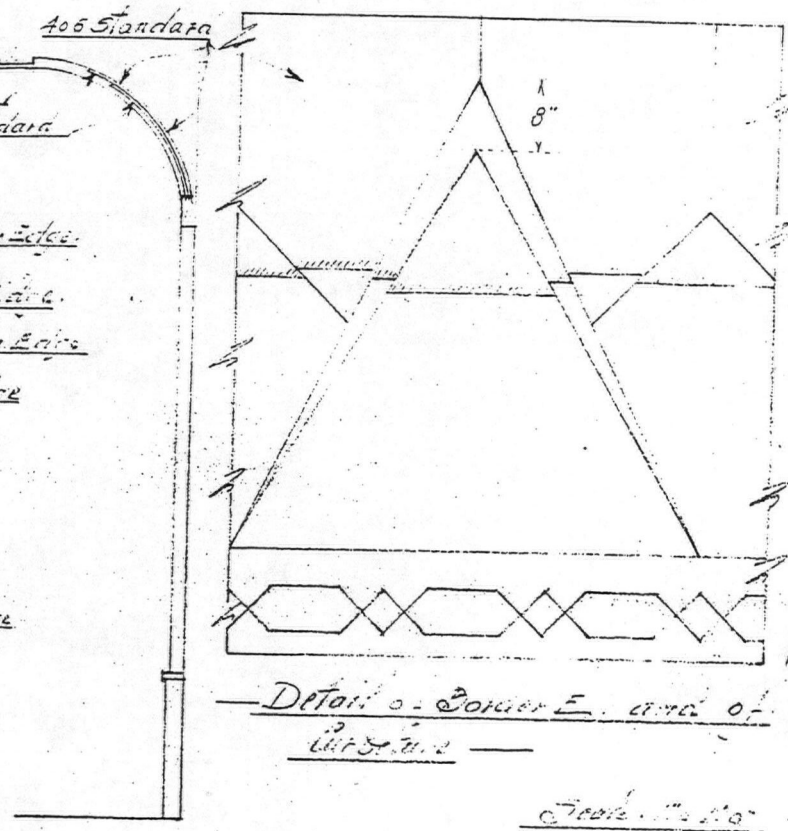
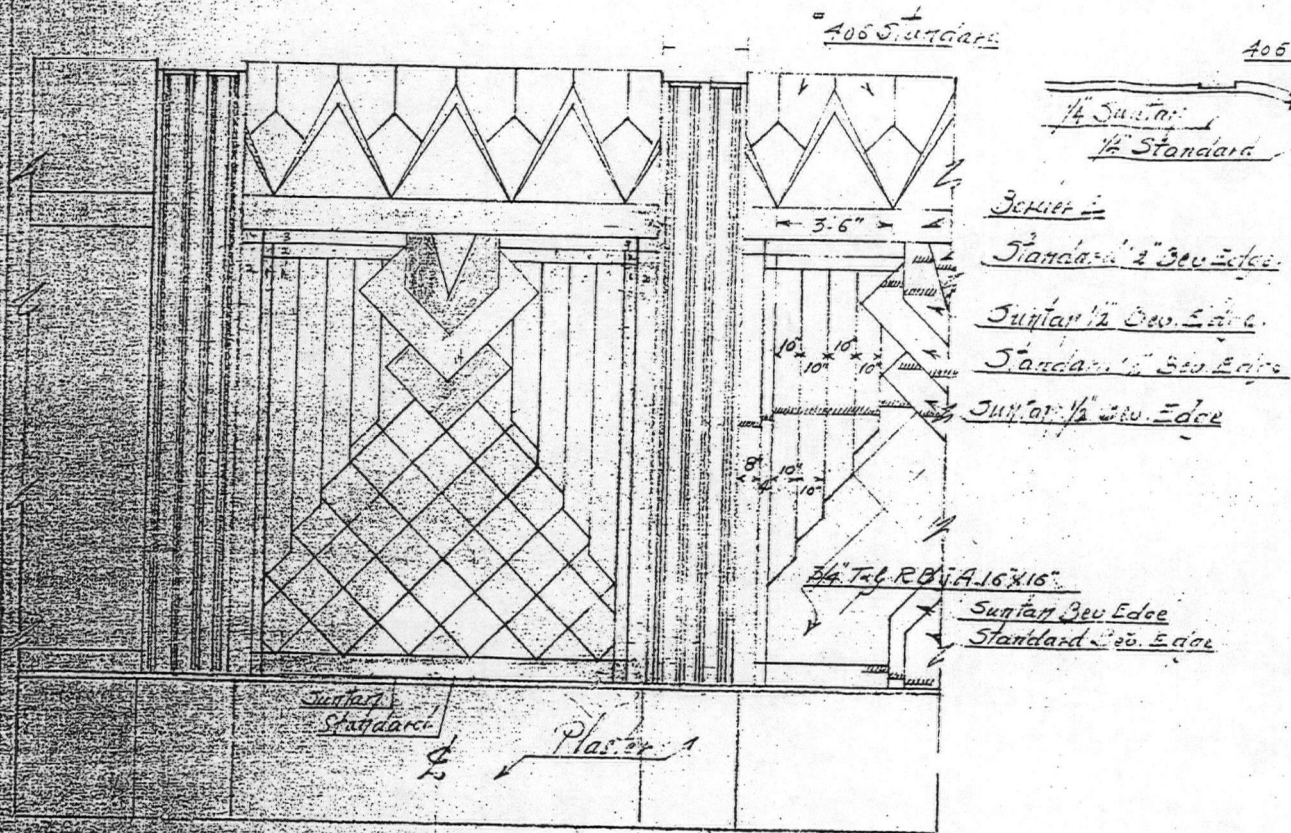
Border E

Rivoli Theatre

July 11-37

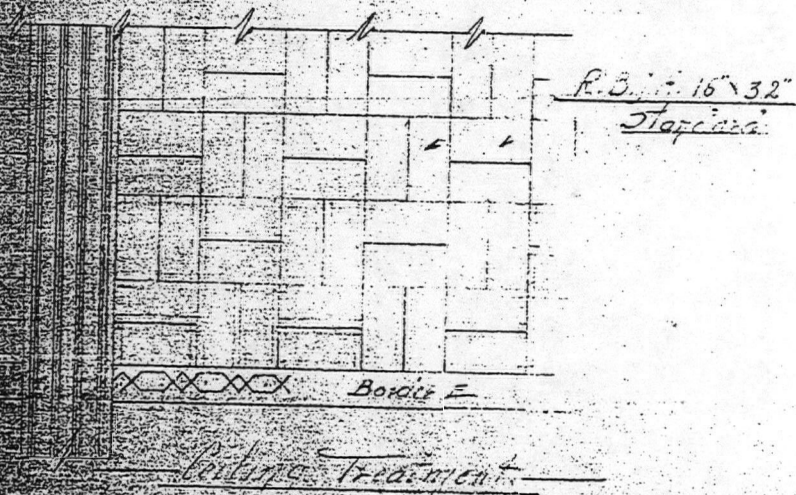
Rivoli Theatre
South Fallsburg
Sullivan Co NY
detail - architect's
plan for 1937 changes

1



Wall Treatment

Scale 1" = 1'-0"

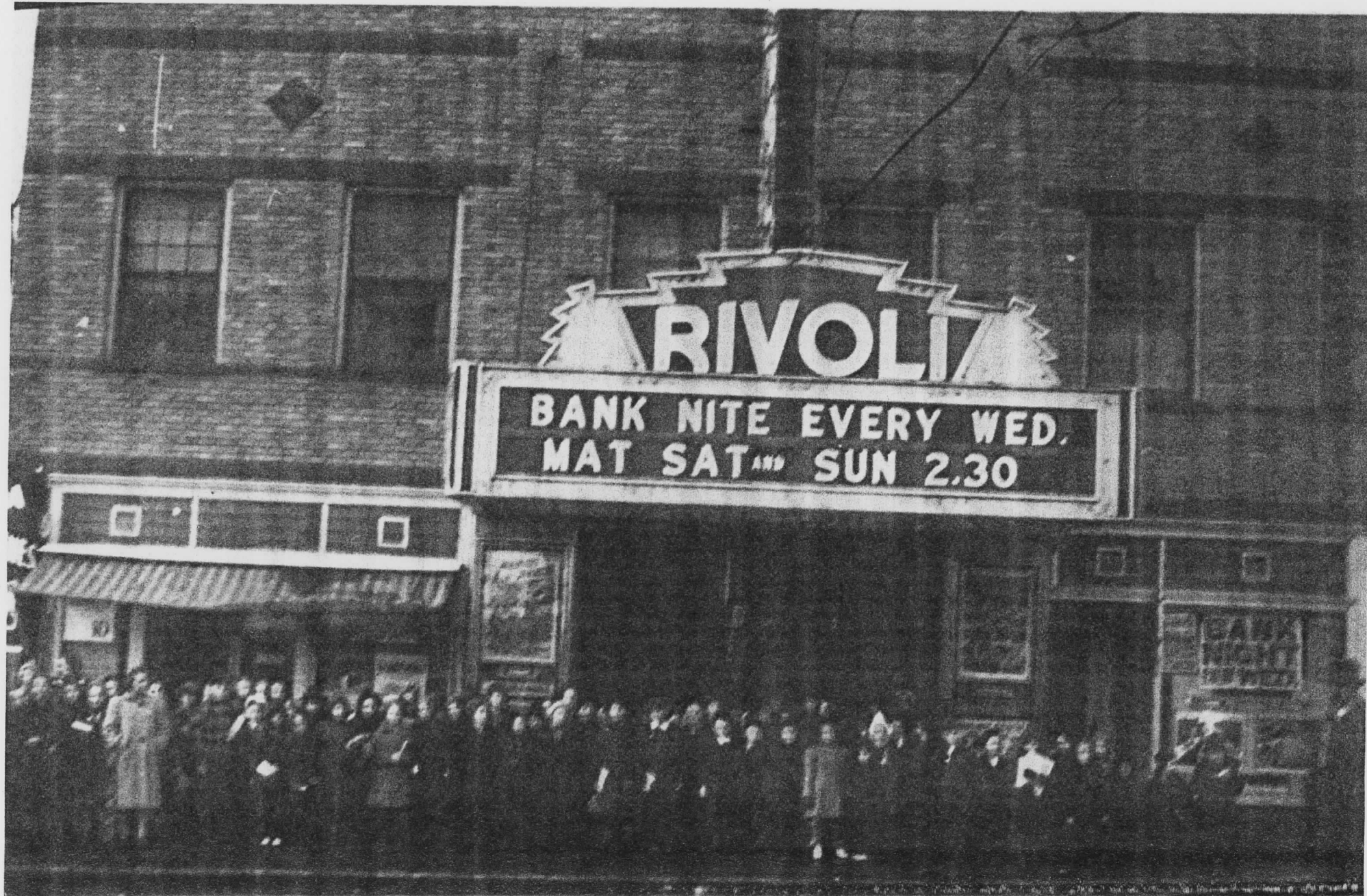


Rivoli Theatre

July 11-37

Rivoli Theatre
 South Fallsburg, Sullivan County
 detail of architect's plan
 for 1937 changes

1



FREE KIDDIE XMAS SHOW - DEC. 20TH 1940

Rivoli Theatre
South Fallsburg
Sullivan Co NY
historic view



Rivoli Theatre
South Fallsburg
Sullivan Co NY
historicview 11/14/1931

NOV. 17, 1931



FRIDAY and SATURDAY, APRIL 22 and 23
THE SENSATIONAL HIT OF THE YEAR!

Maurice Chevalier in



**"One Hour
with You"**

with
Jeanette MacDonald

Genevieve Tobin
Charlie Ruggles
Roland Young

Directed by
Ernst Lubitsch

Intimate

Their trouble is chronic
And he has the tonic—
For he's a love-doctor
you see!

CARTOON "STRANGE AS IT SEEMS" NEWS
ANDY CLYDE in "SHOPPING WITH WIFEY"
MATINEES BOTH DAYS AT 2:30—ADMISSION 20c & 35c
EVENINGS—25c & 50c

COMING SOON! COMING SOON!
"MIRACLE MAN" with CHESTER MORRIS, SYLVIA SIDNEY

Rivoli Theatre
South Fallsburg Sullivan Co NY
c 1930s ad.

RIVOLI Theatre

SOUTH FALLSBURG, N. Y.

Program Week of April 17th, 1932

Gala Holiday Program!

SPECIAL MATINEES THIS WEEK
THURSDAY, FRIDAY AND SATURDAY
APRIL 21, 22 AND 23
At 2:30 P. M.

Don't Miss a Single Picture This Week!

Each One a Headliner! See Such Stars As

MAURICE CHEVALIER

BEN LYON — BARBARA STANWYCK

EDMUND LOWE

TOM MIX and His Horse TONY

RUDY VALLEE — BING CROSSBY

Rivoli Theatre
South Fallsburg Sullivan Co NY
19203-305 ad.

SEE!
HEARST METROTONE NEWS
Every Sunday and Monday

HEAR!

RIVOLI THEATRE

SOUTH FALLSBURG, N. Y.

TWICE A WEEK AT 7 and 9:30 P. M.

Tel.: Fallsburg 110

JACK KAPLAN, Manager

VITAPHONE AND MOVIE TONE
SOUND AND TALKING PICTURES
EVERY NIGHT

SUNDAY AND MONDAY, OCTOBER 6 AND 7
HIS FIRST ALL-TALKING PRODUCTION

ADOLPHE MENJOU *"Fashions in Love"*



Two-Reel Talking Comedy

FASHIONS IN LOVE.
The finest in entertainment! Sheika and shebas learn their lessons in loving from Menjou. Keep up-to-the-minute with Menjou!



A Sony Cartoon

THE FIRST ISSUE OF

Hearst Metrotone News

HEAR WHAT YOU SEE! You will hear every sound as it actually occurs! The living world on the screen!

Admission 25 and 50c

HEAR THEM! SEE THEM!
TALK! ACT!

TUESDAY AND WEDNESDAY, OCTOBER 8 AND 9
SOUND PICTURE!

Greta
Garbo in
The **SINGLE STANDARD**

SHE LOVED
the aristocratic son of
an earl



SHE WAS
SWEEPED OFF
HER FEET
by the romantic
artist.



SHE ADORED
the noted actor who
put his fame at her
feet



— also —

Paramount Talking Act

Fox News

Admission 20 and 35c

THURSDAY AND FRIDAY, OCTOBER 10 AND 11
UNIVERSAL'S MOVIE TONE SPECIAL!
100% TALKING and SINGING!

Youth!
Beauty!
Jazz!
Speed!

COLLEGE LOVE

With George Lewis, Dorothy Gailiver, Churchill Ross, Hayden Stevenson.

WHAT do they learn at college?—o-o-o-h baby! Come on and see the hottest film that ever sizzled on the screen! Campus kisses, football games, sorority parties, 'n' everything!



Comedy

Admission 20 and 35c

Cartoon

SATURDAY, OCTOBER 12—DOUBLE FEATURE



Over picturesque parts of Europe... a pair of American lovers scampered with the girl's guardian at their heels.



Ivan Mosjoukine in "Loves of Casanova"

Admission 20 and 35c

KINDLY NOTE: This theatre will be closed Sunday Night, October 13, in observance of a strict Jewish Holy Day.

Rivoli Theatre
South Fallsburg Sullivan Co. NY

RIVOLI

THEATRE

SO. FALLSBURG, N. Y.

Program Week of October 6th, 1929

Every Sunday and Monday

BEGINNING

October 6th and 7th

SEE and HEAR

HEARST METROTONE NEWS

THE VOICE OF THE WORLD
ON THE SCREEN!

The First Actual Movietone News Presentation
In Sullivan County!

Two Days!

Two Days!

THURSDAY and FRIDAY
January 17th and 18th

Direct from the New York Roxy Theatre

Romance of the Underworld



MARY ASTOR
ROBERT ELLIOTT - BEN BARD - JOHN BOLES

also

M-G-M Comedy Paramount Cartoon

Admission—20c and 35c

TWO MASTERPIECES THAT YOU SIMPLY MUST SEE!

NEXT WEEK
RONALD COLMAN

— in —
"THE RESCUE"

One Day Only!

One Day Only!

SATURDAY, JANUARY 19th

Double Feature

Sir
Harry Lauder

— in —

Huntingtower

— companion feature —

Metro-Goldwyn-Mayers'

"NAPOLEON"

Admission—Matinee, 15c and 30c

Admission—Evening, 20c and 35c

THE FOLLOWING WEEK
EMIL JANNINGS

— in —
"Sins of the Fathers"



RIVOLI
Theatre
SO. FALLSBURG, NEW YORK

Programme
Week Commencing
SUNDAY, JAN. 13th

Fallsburg Fire Dept.
Movie Night
Tues., Jan. 15th
Admission—Matinee, 15c and 30c

Rivoli Theatre
South Fallsburg
Sullivan Co NY
61223-305 ad

UNITED STATES DEPARTMENT OF THE INTERIOR
NATIONAL PARK SERVICE

NATIONAL REGISTER OF HISTORIC PLACES
EVALUATION/RETURN SHEET

REQUESTED ACTION: NOMINATION

PROPERTY Rivoli Theatre
NAME:

MULTIPLE
NAME:

STATE & COUNTY: NEW YORK, Sullivan

DATE RECEIVED: 12/22/00 DATE OF PENDING LIST: 1/03/01
DATE OF 16TH DAY: 1/20/01 DATE OF 45TH DAY: 2/05/01
DATE OF WEEKLY LIST:

REFERENCE NUMBER: 00001691

REASONS FOR REVIEW:

APPEAL: N DATA PROBLEM: N LANDSCAPE: N LESS THAN 50 YEARS: N
OTHER: N PDIL: N PERIOD: N PROGRAM UNAPPROVED: N
REQUEST: N SAMPLE: N SLR DRAFT: N NATIONAL: N

COMMENT WAIVER: N

☒ ACCEPT ☐ RETURN ☐ REJECT 1.26.01 DATE

ABSTRACT/SUMMARY COMMENTS:

Entered in the
National Register

RECOM./CRITERIA _____

REVIEWER _____ DISCIPLINE _____

TELEPHONE _____ DATE _____

DOCUMENTATION see attached comments Y/N see attached SLR Y/N



RIVOLI RIVOLI

A STREETCAR
NAMED DESIRE
SEPT 22 - 24

DANATO
WORKSHOP

Kodak
Processing by
OCT 2000 MN

Kodak
Processing by
OCT 2000 MN

PHOTO # 1

RIVOLI THEATER

MAIN STREET, SOUTH FALLSBURG, SULLIVAN COUNTY, N.Y.

R. DADRAS

10/30/2000

SULLIVAN COUNTY PLANNING DEPT.

MAIN, FRONT ELEVATION



PHOTO #2

RIVOLI THEATER

MAIN STREET, SOUTH FALLSBURY, SULLIVAN COUNTY, NEW YORK

R. DADRAS

10/30/2000

SULLIVAN COUNTY PLANNING DEPT.

FRONT ELEVATION (DETAIL)



RIVOLI

RIVOLI

A STREETCAR
NAMED DESIRE
SEPT 22

Kodak
Processing by
OCT 2000 MN

Kodak
Processing by
OCT 2000 MN

PHOTO #13
RIVOLI THEATER
MAIN STREET, SOUTH FALLSBURG, SULLIVAN COUNTY,
NEW YORK

R. DADRAS
10/30/2000

SULLIVAN COUNTY PLANNING DEPT.

3/4 VIEW, FRONT AND WEST ELEVATION



RIVOLI

RIVOLI RIVOLI

A STREET CAR
NAMED DESIRE
SEPT 22 - 24

DRAMATIC
WORKSHOP

COMMUNITY
BANK

OF SULLIVAN COUNTY
800 N. 1ST ST. ALBANY
NY 12204
RT 42W / RT 62E
MONTICELLO / LIBERTY
794-2265 / 292-2272

KIMBLE BROS. 794-4470

PHOTO #4

RIVOLI THEATER

MAIN STREET, SOUTH FALLSBURG, SULLIVAN COUNTY
NEW YORK

R. DADRAS

10/30/2000

SULLIVAN COUNTY PLANNING DEPT.

3/4 VIEW, FRONT AND EAST ELEVATIONS



PHOTO # 5

RIVOLI THEATER

MAIN STREET, SOUTH FALLSBURG, SULLIVAN COUNTY
NEW YORK

R. DADRAS

10/30/2000

SULLIVAN COUNTY PLANNING DEPT.

WEST ELEVATION



PHOTO # 6
RIVOLI THEATER
MAIN STREET, SOUTH FALLSBURG, SULLIVAN
COUNTY
NEW YORK

R. DADRAS
10/30/2000

SULLIVAN COUNTY PLANNING DEPT.

REAR ELEVATION



PHOTO # 7
RIVOLI THEATER

MAIN STREET, SOUTH FALLSBURG, SULLIVAN COUNTY
NEW YORK

R. DADRAS

10/30/2000

SULLIVAN COUNTY PLANNING DEPT.

THEATER INTERIOR (DETAIL)



PHOTO # 8

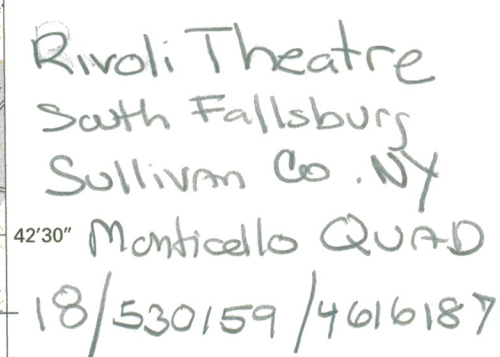
RIVOLI THEATER
MAIN STREET, SOUTH FAULSBURY, SULLIVAN COUNTY
NEW YORK

R. DADRAS
10/30/2000

SULLIVAN COUNTY PLANNING DEPT.
THEATER INTERIOR



MONTICELLO QUADRANGLE
NEW YORK - SULLIVAN CO.
7.5 MINUTE SERIES



QUADRANGLE LOCATION

1995

Digital Edition