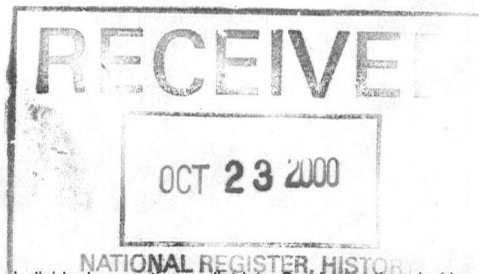


United States Department of the Interior
National Park Service

National Register of Historic Places
Registration Form



This form is for use in nominating or requesting determinations of eligibility for individual properties or districts. See instructions in *How to Complete the National Register of Historic Places Registration Form* (National Register Bulletin 16A). Complete each item by marking "x" in the appropriate box or by entering the information requested. If an item does not apply to the property being documented, enter "N/A" for "not applicable." For functions, architectural classification, materials and areas of significance, enter only categories and subcategories listed in the instructions. Place additional entries and narrative items on continuation sheets (NPS Form 10-900a). Use a typewriter, word processor, or computer, to complete all items.

1. Name of Property

historic name South Fallsburg Hebrew Association Synagogue
other names/site number _____

2. Location

street & number North Street not for publication
city or town South Fallsburg vicinity
state New York code NY county Sullivan code 105 zip code 12779

3. State/Federal Agency Certification

As the designated authority under the National Historic Preservation Act, as amended, I certify that this nomination request for determination of eligibility meets the documentation standards for registering properties in the National Register of Historic Places and meets the procedural and professional requirements set forth in 36 CFR Part 60. In my opinion, the property meets does not meet the National Register criteria. I recommend that this property be considered significant nationally statewide locally. See continuation sheet for additional comments.

JW Allen Dep. Comm'r for Hist. Preservation 6 October '00
Signature of certifying official/Title Date

State or Federal agency and bureau _____

In my opinion, the property meets does not meet the National Register criteria. See continuation sheet for additional comments.

Signature of certifying official/Title Date

State or Federal agency and bureau _____

4. National Park Service Certification

I hereby certify that this property is:

- entered in the National Register. See continuation sheet.
- determined eligible for the National Register. See continuation sheet.
- determined not eligible for the National Register.
- removed from the National Register.
- other, (explain:) _____

Edson H. Beall
Signature of the Keeper

11/22/00
Date of Action

Name of Property

County and State

5. Classification

Ownership of Property

(Check as many boxes as apply)

- private
- public-local
- public-State
- public-Federal

Category of Property

(Check only one box)

- building(s)
- district
- site
- structure
- object

Number of Resources within Property

(Do not include previously listed resources in the count.)

Contributing	Noncontributing	
1	0	buildings
0	0	sites
0	0	structures
0	0	objects
1	0	Total

Name of related multiple property listing

(Enter "N/A" if property is not part of a multiple property listing.)

N/A

Number of contributing resources previously listed in the National Register

0

6. Function or Use

Historic Functions

(Enter categories from instructions)

RELIGION/religious facility

Current Functions

(Enter categories from instructions)

RELIGION/religious facility

7. Description

Architectural Classification

(Enter categories from instructions)

Late nineteenth and twentieth century revivals

Materials

(Enter categories from instructions)

foundation concrete

walls stucco

roof asphalt

other

Narrative Description

(Describe the historic and current condition of the property on one or more continuation sheets.)

United States Department of the Interior
National Park Service

South Fallsburg Hebrew Association Synagogue
South Fallsburg, Sullivan County, NY

National Register of Historic Places Continuation Sheet

Section number 7 Page 1

The South Fallsburg Hebrew Association synagogue is located in the small Catskill Mountains village of South Fallsburg, in the southeastern part of Sullivan County, New York. The synagogue occupies a site on North Street, just off Main Street in a mixed-use neighborhood. The nominated parcel is the original plot purchased for the synagogue in 1902. One block to the west of the synagogue is a large Kosher slaughterhouse, no longer in use. The building to the south of the synagogue is a c1930 school; the lot south of the school is occupied by the Fallsburg Community Center. Although altered, the community center has served South Fallsburg for more than seventy years and is an important gathering place for Jews and Christians alike.

Constructed in 1902, the synagogue has undergone several renovations, both in the historic and non-historic periods. As it exists today, the synagogue is a large rectangular building, three bays wide by five bays deep; it occupies a sloping site so that the basement is exposed on the rear and side elevations. It features a hipped roof, which is obscured by a raised parapet on the facade. The building is constructed of concrete with stucco cladding and the roof is covered in asphalt shingles. The fairly narrow facade is divided into three bays, an entrance flanked by two windows. The entrance is approached via a steep two-stage set of concrete stairs with iron rails and brick newels surmounted by round lamps. The entrance bay rises from the porch to the narrow wooden cornice; the flat wooden surround is surmounted by a small pediment. Windows are set within flat wooden frames. Near the outer edges of the facade, wooden pilasters with Doric capitals also extend from basement to cornice. The most distinguishing feature of the facade is the large Spanish Baroque-inspired parapet. This is characterized by an undulating curvilinear form defined by a wooden molding and ending in truncated, wooden, tower-like projections at each corner. Within the parapet is a large, round stained-glass window within a flat wooden frame. The stained glass depicts a large Star of David enclosing a smaller one and uses a variety of colors.

The side and rear elevations feature deeply overhanging eaves with beaded-board soffits and concrete water tables. Each side elevation features five narrow windows within flat wooden frames. One side features an

See continuation sheet

United States Department of the Interior
National Park Service

South Fallsburg Hebrew Association Synagogue
South Fallsburg, Sullivan County, NY

National Register of Historic Places Continuation Sheet

Section number 7 Page 2

exterior concrete block chimney and a shed-roofed entrance at ground level. The windows nearest the facade light the vestibule, while the others light the sanctuary. The rear elevation is characterized by two windows flanking a rectangular central projection with a shed roof. On the interior, this serves as a cabinet for the ark. The rear also features a small shed-roofed dormer and a one-story addition with shed roof at ground level.

In the 1910s, the building was elevated one story so that a Talmud Torah school could be constructed underneath the sanctuary. Before 1920, an additional bay and a new facade were added to the front of the building, creating the synagogue's contemporary appearance. In the 1970s, the original windows were replaced. Each opening now contains a series of small rectangular windows with clear glazing arranged vertically within the original frame. On the side elevations, solid wooden panels divide the windows into two groups. Despite this unfortunate change, the original frames and moldings survive.

The interior of the synagogue features a three-story plan, including a ground level basement, a raised first floor sanctuary and a third floor accommodating a gallery and classrooms. Entrance is into a small vestibule, where stairs on each side provide access to all three floors. Double doors provide access to the sanctuary, which is laid out in a traditional eastern orthodox plan with pews on three sides facing the ark and a women's gallery that encircles almost the entire sanctuary. Rather than a central bimah, however, in this synagogue, the bimah is located near the front, adjacent to the ark. The ark platform is raised above the bimah and separated from it by a wooden partition. The ark is recessed behind laminated wooden sliding doors and is surmounted by a stained-glass light box flanked by two back-lit panels. The stained glass, which illustrates the burning bush, was crafted locally. The panels depict the Ten Commandments. The interior has also been altered twice. In 1919, a women's gallery was added on two sides of the sanctuary. In the 1970s, the gallery was extended across the back of the sanctuary and classrooms were constructed behind it. Walls of the sanctuary and gallery were paneled and new carpeting was installed on the floor and on some partitions and posts. Around the outside edges of the room, generally over the gallery, dropped acoustical panels were suspended from the original

See continuation sheet

United States Department of the Interior
National Park Service

South Fallsburg Hebrew Association Synagogue
South Fallsburg, Sullivan County, NY

National Register of Historic Places Continuation Sheet

Section number 7 Page 3

ceiling. However, the original decorative pressed-metal ceiling survives and was purposely left uncovered over the larger, center portion of the sanctuary, where a large decorative centerpiece can be seen. First floor wooden pews are historic; however, gallery seating has been replaced by contemporary chairs and a glass panel surmounted by a rounded metal railing has been added to the low gallery walls. The stained-glass piece over the ark is also a contemporary addition. The most apparent interior change is the loss of the original windows; however, the replacement windows fill the original openings.

The basement is devoted to a large community room. An especially noteworthy feature located in the basement is the sukkoth, a hut-like structure used for the Jewish religious festival of thanksgiving. Sukkoths are designed to recall the temporary shelters used by the Jews during their wanderings. This sukkoth features knotty pine paneling and a retractable bamboo ceiling, which accommodates the need for the roof to be opened.

Despite changes, the South Fallsburg Hebrew Association synagogue retains the distinguishing features of orthodox synagogues in the Catskill region. Among the oldest synagogues in the county, it remains an important component within the group of Sullivan County synagogues.

8 Statement of Significance

Applicable National Register Criteria

(Mark "x" in one or more boxes for the criteria qualifying the property for National Register listing.)

- A** Property is associated with events that have made a significant contribution to the broad patterns of our history.
- B** Property is associated with the lives of persons significant in our past.
- C** Property embodies the distinctive characteristics of a type, period or method of construction or represents the work of a master, or possesses high artistic values, or represents a significant and distinguishable entity whose components lack individual distinction.
- D** Property has yielded, or is likely to yield, information important in prehistory or history.

Criteria considerations

(mark "x" in all the boxes that apply.)

Property is:

- A** owned by a religious institution or used for religious purposes.
- B** removed from its original location.
- C** a birthplace or grave.
- D** a cemetery.
- E** a reconstructed building, object or structure.
- F** a commemorative property.
- G** less than 50 years of age or achieved significance within the past 50 years.

Narrative Statement of Significance

(Explain the significance of the property on one or more continuation sheets.)

9. Major Bibliographical References

Bibliography

(cite the books, articles, and other sources used in preparing this form on one or more continuation sheets.)

Previous documentation on file (NPS):

- preliminary determination of individual listing (36 CFR 67) has been requested
- previously listed in the National Register
- previously determined eligible by the National Register
- designated a National Historic Landmark
- recorded by Historic American Buildings Survey # _____
- recorded by Historic American Engineering Record # _____

Areas of Significance

(Enter categories from instructions)

- social history _____
- architecture _____
- _____
- _____
- _____

Period of Significance

1902-c1920

Significant Dates

1902; c1920

Significant Person

(Complete if Criterion B is marked above)

Cultural Affiliation

Architect/Builder

Primary location of additional data

- State Historic Preservation Office
- Other State agency
- Federal agency
- Local government
- University
- Other

Name of repository:

United States Department of the Interior
National Park Service

South Fallsburg Hebrew Association Synagogue
South Fallsburg, Sullivan County, NY

National Register of Historic Places Continuation Sheet

Section number 8 Page 1

Summary

The South Fallsburg Hebrew Association synagogue is significant as an intact representative example of an early twentieth century synagogue in Sullivan County and as one of the earliest synagogues built by Sullivan County's Jewish settlers. Constructed in 1902, the synagogue has been renovated several times to meet the needs of successive generations of South Fallsburg Jews. As it exists today, the synagogue retains the distinctive characteristics of its type, including a three-bay facade, stucco cladding, a Spanish Baroque-inspired parapet and an eastern orthodox plan. The congregation of the Hebrew Association of South Fallsburg has always included members and supporters of every possible Jewish persuasion, from the strictly pious to the secular socialist, and the building has served as a cultural icon and a place of worship, learning, and meeting for its diverse membership. Members were primarily small-town business people and farmer-guest-house proprietors. The building's history parallels the history of Sullivan County Jews. As built, the South Fallsburg synagogue was smaller and had modest ornamentation, signifying the new immigrant status of its builders. As the immigrants assimilated and became more affluent they altered the building to represent their sense of place in the South Fallsburg community. The first significant renovation of the South Fallsburg Hebrew Association building took place in 1919, when a women's gallery was added on two sides of the sanctuary in keeping with other more affluent synagogues in Sullivan County. Shortly thereafter, the congregation had the building elevated one story so that a Talmud Torah school could be built underneath the sanctuary. At some point during this period, an additional bay was added to the front of the building, accounting for the prominent facade, overscaled entrance bay and large parapet. The new facade resembles the facades of other Sullivan County synagogues of the 1920s and 30s, particularly in its Spanish Baroque-inspired motif. It is significant that this congregation has experienced the building as a living thing, malleable to the changing needs of the community as it grew, assimilated, became more affluent and acquired what it experienced as a "modern" aesthetic. This building is the most important public signifier of the self-perceived identities of its congregation throughout the century. Although it has been changed, the South Fallsburg Hebrew Association synagogue retains the

United States Department of the Interior
National Park Service

South Fallsburg Hebrew Association Synagogue
South Fallsburg, Sullivan County, NY

National Register of Historic Places Continuation Sheet

Section number 8 Page 2

ambiance of a vernacular, small-town synagogue that links it to other village synagogues in the Sullivan County group.

Jewish Settlement in the Catskills

In the eastern Catskills, dominated by the Hudson River Valley, Jews are documented as early as 1720, when Louis Moses Gomez, a Jew of Sephardic (Spanish) descent, settled near Newburgh to trade with the Indians. Another settler called "Jacob the Jew" leased land in Woodstock in 1773. Early in the nineteenth century German Jewish peddlers abounded in the area and a Jewish settlement, Sholam, which later failed, was established in 1837 (Veers 479).

Jews didn't arrive in the western Catskills, dominated by the Delaware River and its tributaries, until c1900. These Jews emigrated from eastern Europe to escape "economic decline and physical oppression" in their homelands (Sorin 1). Many Americans perceived them as eugenically undesirable, threatening "to overwhelm the carefully cultivated image the Germans Jews displayed" (Glazier 12). German Jews made every effort to disperse the eastern European arrivals as quickly as possible. In response to this, some, like those in the western Catskills, managed to "re-locate" themselves in a healthier environment.

South Fallsburg

South Fallsburg, in the western Catskills, is named for the falls on the Neversink River, which are within the town boundaries. This area was originally part of the Hardenburgh Patent, a large and ill-defined expanse of land stretching between the Hudson and Delaware valleys. This patent was settled by Dutch, Scotch-Irish and English farmers, merchants and craftsmen. Before 1803, the area in which South Fallsburg is located was in the town of Mamakating, which also included the town of Thompson. The town of Fallsburg was established in 1826.

United States Department of the Interior
National Park Service

South Fallsburg Hebrew Association Synagogue
South Fallsburg, Sullivan County, NY

National Register of Historic Places Continuation Sheet

Section number 8 Page 3

The hamlet of Fallsburg was settled about 1796 by three brothers, Samuel, Thaddeus, and Obadiah Brown (Neiderman 9). The Browns built a saw mill and a grist mill at the Neversink falls c1809. The first supervisor of the town of Fallsburg was elected in 1826. Agricultural issues were the primary concerns at that time (Neiderman 18-22). The hamlet really began to prosper when a tannery was established in 1831. At that time rooming houses were built to accommodate the workers, mostly German and Irish immigrants (Neiderman 9-10). The Civil War provided a great boon for the tannery business because of the army's requirements for leather. However, this business resulted in denuding the forests because of its relentless need for hemlocks; therefore, many the tanneries had ceased operation by the mid-late nineteenth century.

Although the tanneries were the most important industry in the Fallsburg area until the after the Civil War, as early as 1830, Fallsburg was also known for its location on the Neversink River and the nearby streams and lakes that provided excellent trout fishing. By the late nineteenth century, the summer resort business began to supplant the tanneries as a mainstay of the Fallsburg economy. In 1871, the railroad came to Fallsburg through a tunnel under "Tunnel Hill." The New York and Oswego Midland Railroad (later known as the New York, Ontario and Western Railroad, or the O & W) is directly responsible for the development and success of the resort business in Sullivan County. To support this industry, and in anticipation of increased passenger traffic, the railroad "gave special rates to builders ... carrying lumber and materials free at times" (Neiderman 51). A full-fledged resort industry flourished in Fallsburg by the late 1870s, complete with gala entertainment.

By 1886, South Fallsburg was the focal point of a fast-growing farm and boarding house resort area. "It was the arrival and departure point on the main line for a whole string of satellite resorts including Woodbourne, Thompsonville, Grahamsville, Neversink and even the busy county seat, Monticello" (Wakefield 97). In 1883, stagecoach service between Fallsburg and Monticello was initiated, and the improved Fallsburg/Monticello turnpike (now New York State Route 42) was completed in 1886. In 1903, about the time that the first Jews arrived in Fallsburg, the railroad station was improved. Between 1886 and 1910, the Christian "resort business"

See continuation sheet

United States Department of the Interior
National Park Service

South Fallsburg Hebrew Association Synagogue
South Fallsburg, Sullivan County, NY

National Register of Historic Places Continuation Sheet

Section number 8 Page 4

(which never listed more than ten establishments in Fallsburg in *Summer Homes*) was in decline, and hotels, bungalow colonies, summer cottages and “kucheleins” were becoming the dominant types of Fallsburg hospitality (Wakefield 100). These enterprises, often run by “farmer’s wives,” represent Jewish forms of hospitality. Blumberg lists nearly sixty hotels and guesthouses in Fallsburg in the 1930s (Blumberg 280-81).

Summer Homes

In 1878 the Oswego-Midland Railroad, in an attempt to drum up more passenger business, began publishing *Summer Homes*, a brochure, later taken over by the O & W, that listed “homes” offering hospitality for vacationers during the summer (Neiderman 50). During the 1880s, the area was touted as a place where a “fresh air” cure for tuberculosis could be had. This approach backfired, as “healthy” patrons did not want to frequent a place occupied by sick people, and the summer guest business began to fizzle at the end of the nineteenth century. Until c1899, hosts listed in *Summer Homes* were exclusively Christian. In 1899, *Summer Homes* listed Jewish proprietors in Fallsburg township for the first time. The listing was worded so as to exclude new immigrants and to encourage older, assimilated German Jews to visit (Neiderman 54). By 1906, Christian farmers and boardinghouse owners were regularly selling out to Jewish proprietors. During this period of transition, Christian hosts bluntly stated “Hebrews not Welcome.” When “Hebrews” began to make an appearance in the listings in 1899, they advertised “dietary laws observed” to alert potential Jewish guests about houses in which they would be welcome (Blumberg 180-81).

South Fallsburg Hebrew Association

The South Fallsburg synagogue was built in 1902. Originally named Ahavas Achim, the building represented its congregation’s collective memory of Eastern European synagogues. In 1910 the congregation voted to re-name the organization “The South Fallsburg Hebrew Association.” This name suggests functions that are more diverse than prayer alone. It wasn’t until 1916 that a sink was built to accommodate pious members who needed to wash their hands before services. At the same time, the community voted to support the “Hebrew Free

See continuation sheet

United States Department of the Interior
National Park Service

South Fallsburg Hebrew Association Synagogue
South Fallsburg, Sullivan County, NY

National Register of Historic Places Continuation Sheet

Section number 8 Page 5

School," which was a Yiddish secular school. Clearly, as in other Sullivan County vernacular synagogues, the community served by the South Fallsburg Hebrew Association included many Jewish constituencies ranging from the pious to secular socialists.

The minutes of the South Fallsburg Hebrew Association document a remarkable growth of both the Jewish population in South Fallsburg and their increasing wealth. Every few weeks, when a meeting was held, new members were proposed and accepted. Finding enough "benches" to accommodate the crowds expected for the High Holy Days was a perennial concern. That the South Fallsburg synagogue was supported from the beginning by a year-round population of merchants and journeymen is attested to by the fact that meetings were held every couple of weeks *all year long*. One function of the association was maintaining a cemetery and supervising its use. A sick fund was maintained and the congregation took the initiative to bring a permanent doctor to South Fallsburg, calling on all citizens of the village to support him. By 1916, the South Fallsburg Hebrew Association had enough prosperous members to support synagogue renovations, and by 1919 alterations were begun. They consisted of elongating the "mens' hall, building ladies galleries on two sides of the shul, and elevating the building to accommodate a Tamud Torah underneath. Mr. Brizel, born in 1923, remembers that the synagogue always had a space underneath its north side, left open when the building was elevated. This area was not enclosed until the basement was made into a social hall. The other significant change was the addition of a new facade, grander and more prominent than the original and featuring a distinctive Spanish Baroque-inspired parapet. Other ways in which South Fallsburg's Jews expressed their growing affluence was by purchasing new Torahs and curtains for the ark and collecting money to install a new ark in 1919.

By the 1930s Jews dominated South Fallsburg. When Jews were not allowed to serve as volunteer firemen in Monticello, the county seat, the South Fallsburg Volunteer Firemen were nearly 100 percent Jewish. Jews dominated village governance and established a host of Jewish organization like B'nai Brith, Hadassah, Zionist

See continuation sheet

United States Department of the Interior
National Park Service

South Fallsburg Hebrew Association Synagogue
South Fallsburg, Sullivan County, NY

National Register of Historic Places Continuation Sheet

Section number 8 Page 6

organizations and others. Harold Gold observed that, in South Fallsburg, “You didn’t have to *do* anything to be Jewish; you just had to be born.” The prosperity of South Fallsburg’s Jews continued into the 1970s, when, once more, costly renovations were made to the South Fallsburg synagogue to bring it into accord with the modern and financially successful status that the members of its congregation accorded themselves. Most of these changes were cosmetic, including wall paneling, carpeting, extension of the ladies gallery, construction of classrooms, and installation of a new stained-glass art piece, designed and executed by a local artisan, over the ark. Folk Art images of Jewish iconography, which hung under the balustrade of the women’s gallery, were removed in an effort to produce a more sophisticated synagogue. Replacement of the original stained-glass windows reflects concern about modern issues like heat retention and leakage.

Shortly afterward, the South Fallsburg Jewish community began to suffer reverses. The contraction of the resort industry left the businessmen and journeymen without major customers. Second and third generation children had been packed off to college and moved elsewhere. The once busy stores on Main Street closed, and the South Fallsburg Hebrew Association found itself hard-put to maintain its building and to find a minyan to pray on Sabbath. Most members of the congregation are not Orthodox in their Jewish practice and would prefer mixed seating in the sanctuary. They believe that making a change toward more “modern” Judaism would draw in some younger people who have moved to Sullivan County. But a few nostalgic members, who do not observe most Jewish rituals themselves, insist upon having an “Orthodox” synagogue not to go to. Some very affluent members have kept the congregation going. Recently, a young, charismatic Lubovitch (Hassidic) rabbi has been retained, and because of his outreach, children are again studying Judaism at the South Fallsburg Hebrew Association. Attendance, at least in the summer, has increased. This congregation has managed to represent Jewish identity in South Fallsburg over a period of nearly a hundred years. It is appropriate that the synagogue has reflected the many incarnations of the community embraced by its walls. But, just as South Fallsburg, through its expansions and contractions, remained a small, rural town, the South Fallsburg Hebrew Association synagogue has remained a rural, small town vernacular synagogue.

See continuation sheet

S. Fallsburg Hebrew Association

Name of Property

Sullivan County, New York

County and State

10. Geographical DataAcreage of property less than one acre**UTM References**

(Place additional UTM references on a continuation sheet.)

1	18	530716	4617080	3			
	Zone	Easting	Northing		Zone	Easting	Northing
2				4			

See continuation sheet

Verbal Boundary Description

(Describe the boundaries of the property on a continuation sheet.)

Boundary Justification

(Explain why the boundaries were selected on a continuation sheet.)

11. Form Prepared By

name/title Kathleen LaFrank - see continuation sheet

organization New York State Historic Preservation Office date August 2000

street & number Peebles Island State Park, PO Box 189 telephone 518-237-8643 x 3261

city or town Waterford state NY zip code 12188

Additional Documentation

Submit the following items with the completed form:

Continuation Sheets**Maps**

- A **USGS map** (7.5 or 15 minute series) indicating the property's location.
- A **Sketch map** for historic districts and properties having large acreage or numerous resources.

PhotographsRepresentative **black and white photographs** of the property.**Additional items**

(Check with the SHPO or FPO for any additional items)

Property Owner

(Complete this item at the request of the SHPO or FPO.)

name South Fallsburg Hebrew Association

street & number _____ telephone _____

city or town South Fallsburg state NY zip code 12779

Paperwork Reduction Act Statement: This information is being collected for applications to the National Register of Historic Places to nominate properties for listing or determine eligibility for listing, to list properties and to amend existing listings. Response to this request is required to obtain a benefit in accordance with the National Historic Preservation Act, as amended (16 U.S.C.470 *et seq.*)

Estimated Burden Statement: Public reporting burden for this form is estimated to average 18.1 hours per response including time for reviewing instructions, gathering and maintaining data and completing and reviewing the form. Direct comments regarding this burden estimate or any aspect of this form to the Chief, Administrative Services Division, National Park Service, P.O. Box 37127, Washington, DC 20013-7127; and the Office of Management and Budget, Paperwork Reductions Projects (1024-0018), Washington, DC 20503.

United States Department of the Interior
National Park Service

South Fallsburg Hebrew Association Synagogue
South Fallsburg, Sullivan County, NY

National Register of Historic Places Continuation Sheet

Section number 9 Page 1

Bibliography

- Blumberg, Esterita. *Remembering the Catskills: Tales by a Recovering Hotelkeeper*. Fleischmanns: Purple Mountain Press, 1996.
- Evers, Alf. *The Catskills: From Wilderness to Woodstock*. rev. ed. Woodstock: Overlook, 1972.
- Gold, Harold. Interview by Maurie Sacks, 14 July 1996.
- Niederman, Andrew. *The Sesquicentennial of Fallsburg Township: 1826-1976*. Town of South Fallsburg: Niederman, 1976.
- Sorin, Gerald. *A Time for Building: The Third Migration 1880-1920*. Baltimore: Johns Hopkins UP, 1992.
- Wakefield, Manville. *To the Mountains by Rail*. Fleischmanns: Purple Mountain Press, 1989.

See continuation sheet

United States Department of the Interior
National Park Service

South Fallsburg Hebrew Association Synagogue
South Fallsburg, Sullivan County, NY

National Register of Historic Places Continuation Sheet

Section number 10 Page 1

Verbal Boundary Description

The boundary is indicated by a heavy line on the enclosed map with scale.

Boundary Justification

The nominated parcel is the original parcel associated with the synagogue.

See continuation sheet

United States Department of the Interior
National Park Service

South Fallsburg Hebrew Association Synagogue
South Fallsburg, Sullivan County, NY

National Register of Historic Places Continuation Sheet

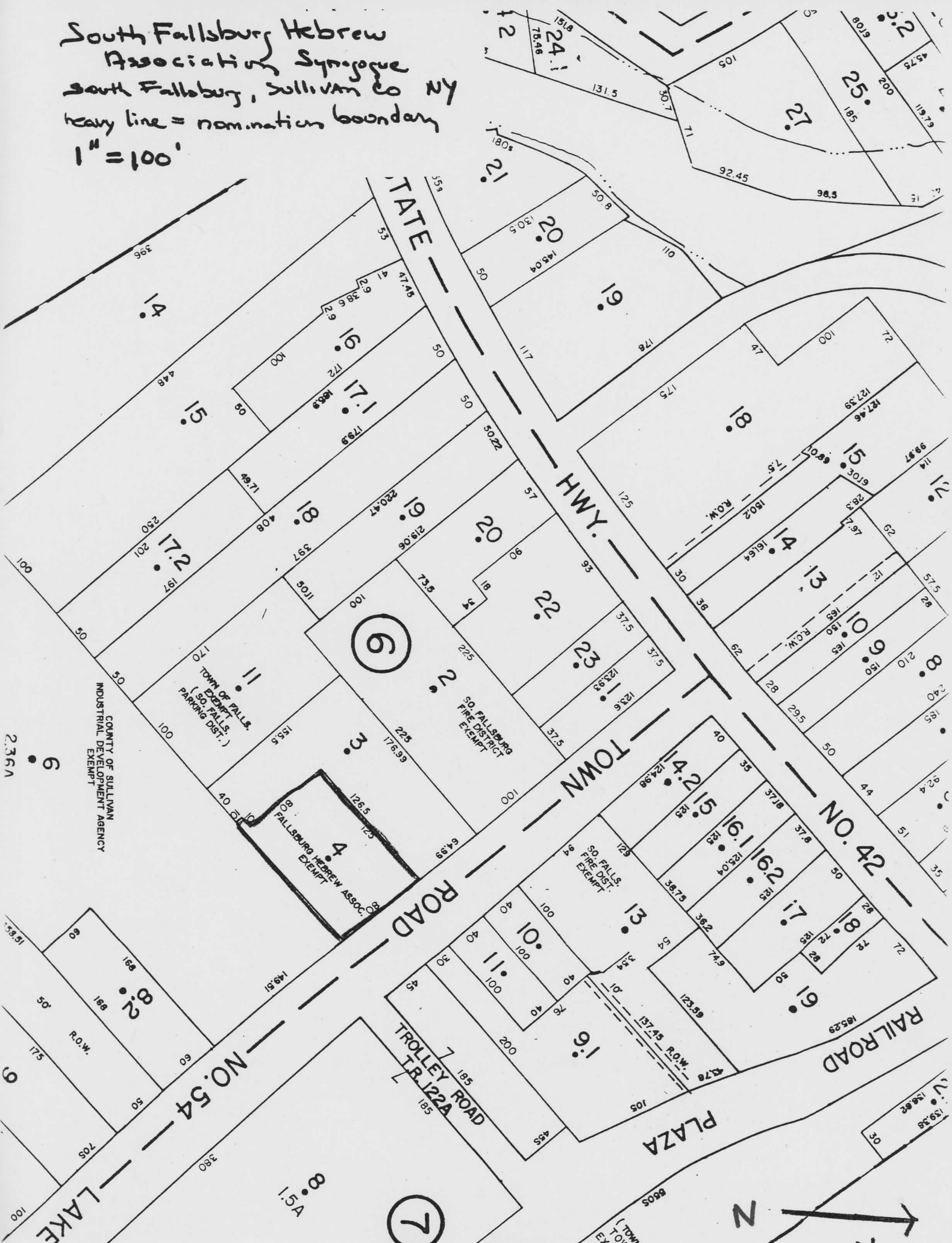
Section number 11 Page 1

Research and documentation provided by

Maurie Sacks
Professor, Anthropology Department
Montclair State University
Montclair, New Jersey

See continuation sheet

South Fallsburg Hebrew
 Association Synagogue
 South Fallsburg, Sullivan Co NY
 heavy line = nomination boundary
 1" = 100'



UNITED STATES DEPARTMENT OF THE INTERIOR
NATIONAL PARK SERVICE

NATIONAL REGISTER OF HISTORIC PLACES
EVALUATION/RETURN SHEET

REQUESTED ACTION: NOMINATION

PROPERTY NAME: South Fallsburg Hebrew Association Synagogue

MULTIPLE NAME:

STATE & COUNTY: NEW YORK, Sullivan

DATE RECEIVED: 10/23/00 DATE OF PENDING LIST: 11/06/00
DATE OF 16TH DAY: 11/22/00 DATE OF 45TH DAY: 12/07/00
DATE OF WEEKLY LIST:

REFERENCE NUMBER: 00001410

REASONS FOR REVIEW:

APPEAL: N DATA PROBLEM: N LANDSCAPE: N LESS THAN 50 YEARS: N
OTHER: N PDIL: N PERIOD: N PROGRAM UNAPPROVED: N
REQUEST: N SAMPLE: N SLR DRAFT: N NATIONAL: N

COMMENT WAIVER: N

ACCEPT RETURN REJECT 11.22.00 DATE

ABSTRACT/SUMMARY COMMENTS:

Entered in the
National Register

RECOM./CRITERIA _____

REVIEWER _____ DISCIPLINE _____

TELEPHONE _____ DATE _____

DOCUMENTATION see attached comments Y/N see attached SLR Y/N



South Fallsburg Hebrew Association
Synagogue

South Fallsburg Sullivan Co NY

photo: Inverne Black 1998

neg: RFD Box 118 A
Woodbourne

View: facade

#1



South Fallsburg Hebrew Association
Synagogue

South Fallsburg Sullivan Co NY

photo: Laverne Black 1998

neg: RFD Box 118 A
Woodbourne

view: facade + south elevation

#2

~~1998~~ 1998
1998
~~1998~~



South Fallsburg Hebrew Association
Synagogue

South Fallsburg Sullivan Co NY

photo: LaVene Black 1998

Key: RFD Box 118 A

Woodbourne

photo: south + north elevations
#3



South Fallsburg Hebrew
Association Synagogue

South Fallsburg, Sullivan Co NY

photo: Haverne Block 1998

neg: RFD Box 118A
Woodburne

View: interior, looking
toward bimah + ark

4



NEW YORK STATE
DEPARTMENT OF TRANSPORTATION

MONTICELLO QUADRANGLE
NEW YORK - SULLIVAN CO.
7.5 MINUTE SERIES



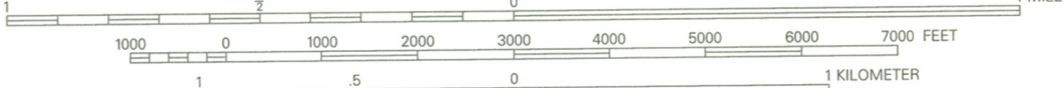
South Fallsburg
Hebrew Association
Synagogue
South Fallsburg
Sullivan Co NY
18/530716/4617080

Published by the New York State Department of Transportation, in cooperation with the U.S. Department of Transportation, Federal Highway Administration.
Map base from 1966 U.S. Geological Survey 7.5-minute quadrangle.
Map revisions made using aerial photographs dated 1993, construction plans, official records and other sources. Features revised include: highways and other transportation facilities; civil and public land boundaries; recreation sites; hydrography; and buildings. Gray tint indicates developed areas in which only landmark buildings are shown. Darker gray tint indicates open water features.
Revisions may not comply with National Map Accuracy Standards.
Correspondence concerning this and other Department of Transportation maps should be directed to: Map Information Section, New York State Department of Transportation, State Campus, Building 4, Room 105, Albany, New York 12232-0415.
Revisions by C.E. Walp



QUADRANGLE LOCATION

SCALE 1:24 000



Transverse Mercator projection, 1927 North American Datum
To place on the 1983 North American Datum, move the projection lines 10 meters south and 33 meters west as shown by dashed corner ticks.
1000-meter ticks based on the New York Transverse Mercator projection /grid.
Between 72° and 78° West Longitude, this projection/grid is identical to Zone 18 of the Universal Transverse Mercator projection/grid. Areas east of 72° and west of 78° are direct mathematical extensions of Zone 18. The scale of this map has been adjusted by its projection scale factor in order to maintain true 1:24,000 scale. The Transverse Mercator projection scale factor at this quadrangle location is 0.9996.
10,000-foot ticks based on the New York State Plane Coordinate System, East Zone.
1995 magnetic declination is approximately 13.0° West.
Control and spot elevations shown to the nearest foot.

Contours, at 20-foot intervals, shown unrevised from 1966 U.S. Geological Survey map. Datum is mean sea level.

INDEX TO
1:9600 (1"=800')
MAP COVERAGE

MONTICELLO (north)
MONTICELLO (south)

BOUNDARIES:

State	-----
County	-----
Town or City	-----
Incorporated Village	-----
State / Federal Land	-----

ROADS:

Posted Touring Route:	Divided:
Interstate	Wide mall
U.S.	Narrow mall or barrier
State	Undivided:
County	4 or more lanes
State Highway (SH) number and limit	Less than 4 lanes
County road	Vehicle track; trail
Interchange number	