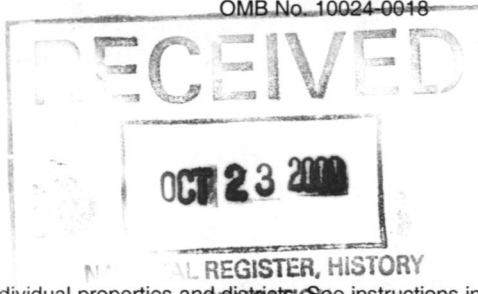


United States Department of the Interior
National Park Service

National Register of Historic Places
Registration Form



This form is for use in nominating or requesting determinations for individual properties and districts. See instructions in *How to Complete the National Register of Historic Places Registration Form* (National Register Bulletin 16A). Complete each item by marking "x" in the appropriate box or by entering the information requested. If an item does not apply to the property being documented, enter "N/A" for "not applicable." For functions, architectural classification, materials, and areas of significance, enter only categories and subcategories from the instructions. Place additional entries and narrative items on continuation sheets (NPS Form 10-900a). Use a typewriter, word processor, or computer, to complete all items.

1. Name of Property

historic name Fabius Village Historic District

other name/site number N/A

2. Location

street & town (Refer to building list, Section 7) not for publication

city or town Fabius vicinity

state New York code NY county Onondaga code 067 zip code 13063

3. State/Federal Agency Certification

As the designated authority under the National Historic Preservation Act, as amended, I hereby certify that this nomination request for determination of eligibility meets the documentation standards for registering properties in the National Register of Historic Places and meets the procedural and professional requirements set forth in 36 CFR Part 60. In my opinion, the property meets does not meet the National Register criteria. I recommend that this property be considered significant nationally statewide locally. (See continuation sheet for additional comments.)

J.W. Alderman 11 October '00
Signature of certifying official/Title Date
Deputy Commissioner for Historic Preservation
State of Federal agency and bureau

In my opinion, the property meets does not meet the National Register criteria. (See continuation sheet for additional comments.)

Signature of certifying official/Title Date
State or Federal agency and bureau

4. National Park Service Certification

I hereby certify that the property is:

- entered in the National Register. See continuation sheet.
- determined eligible for the National Register See continuation sheet.
- determined not eligible for the National Register.
- removed from the National Register.
- other, (explain): _____

[Signature] 11/22/00
Signature of the Keeper Date of Action
Edson H. Beall

5. Classification

Ownership of Property
(check as many boxes as apply)

Category of Property
(check only one box)

Number of Resources within Property
(Do not include previously listed resources in the count.)

- public-local
- private
- public-State
- public-Federal

- district
- building(s)
- site
- structure
- object

Contributing	Noncontributing	
57	12	buildings
2	0	sites
2	1	structures
4	0	objects
65	13	Total

Name of related multiple property listing
(Enter "N/A" if property is not part of a multiple property listing.)

Number of contributing resources previously listed in the National Register

N/A

0

6. Function or Use

Historic Function
(Enter categories from instructions)

Current Function
(Enter categories from instructions)

- DOMESTIC; single dwelling, secondary structure
- EDUCATION; school
- RELIGION; religious facility
- FUNERARY; cemetery
- COMMERCE/TRADE; specialty store
- SOCIAL; meeting hall
- AGRICULTURE/SUBSISTENCE; agricultural outbuilding

- DOMESTIC; single dwelling, multiple dwelling, secondary structure
- EDUCATION; school
- RELIGION; religious facility
- COMMERCE/TRADE; specialty store
- FUNERARY; cemetery
- SOCIAL; clubhouse
- GOVERNMENT; fire station

7. Description

Architectural Classification
(Enter categories from instructions)

Materials
(Enter categories from instructions)

- EARLY REPUBLIC; Federal
- MID-19TH CENTURY; Greek Revival, Gothic Revival
- LATE VICTORIAN; Italianate, Queen Anne, Romanesque
- LATE 19TH AND 20TH CENTURY REVIVALS; Collegiate Gothic

- foundation
- walls
- roof
- other

Narrative Description

(Describe the historic and current condition of the property on one or more continuation sheets.)
See Continuation Sheets.

Property Name Fabius Village Historic District
Location Fabius, Onondaga County, New York

**NATIONAL REGISTER OF HISTORIC PLACES
CONTINUATION SHEET**

Section number 7 Page 1

7. Description

Fabius Historic District is comprised of forty-four residential, commercial, educational, and religious properties in historic core of the Village of Fabius, Onondaga County, New York. The village is located in the southeastern corner of Onondaga County, in the predominately rural town of Fabius, approximately fifteen miles southeast of the city of Syracuse. The topography of the immediate region is characterized by smoothly contoured ridges, narrow valleys, and expansive tracts of open land. The landscape is typical of that throughout this region of central New York. The hamlet developed during the nineteenth century on a relatively flat stretch of land, intersected by the east-west axis of the Skaneateles and Hamilton Turnpike, modern-day New York State Route 80 (Main Street). The nominated district, which encompasses approximately seventy acres, includes within its boundaries portions of Main Street, Academy Street, and Pettit Street, in addition to the Fabius Evergreen Cemetery. The proposed historic district possesses a significant concentration of early and mid-nineteenth century buildings and associated features, set within relatively intact streetscapes, which effectively convey a visual sense of the community's early development.

The village began to evolve physically following the completion of the Skaneateles and Hamilton Turnpike, circa 1810, at the crossroads where the north-south road leading from Manlius into Cortland County and the turnpike intersected. Fabius experienced considerable growth during the 1820s and 1830s, largely on account of the economic opportunities provided by the success of local agriculture. Main Street (State Route 80), route of the former turnpike, forms the spine of the district, which begins just east of Pompey Street. Sugar maples line both sides, much as they have since first planted by village residents in the early decades of the nineteenth century. The street retains deep, uniform setbacks on both the north and south sides, a feature consistent throughout the district. The First Baptist Church and adjacent burial ground, situated on the northeast corner of Main Street and Pettit Street, forms the visual focus of the main thoroughfare and lies at the core of the district. To the north, the boundary is formed by six residential properties fronting Academy Street, which give way immediately to rolling pastureland. Each of these six properties retain significant agriculture-related outbuildings, indicative of their early function as farms on the village's edge. The southern boundary of the nominated district is formed by Fabius Evergreen Cemetery, a vernacular expression of picturesque rural cemetery design dating to the 1860s. It is bounded on the east by Keeney Street and on the west by Mill Street.

The boundaries were established to include the most substantially-coherent concentration of contributing historic resources. The majority of these are domestic buildings of frame construction, dating from the first half of the nineteenth century. Vernacular interpretations of the classically-derived Federal and Greek Revival styles predominate, indicative of the villages turnpike-related expansion, in addition to notable examples of the early Gothic Revival. Many are transitional examples, exhibiting both Federal and Greek Revival design vocabulary. Numerous examples exhibit the front-gabled orientation typical of the Greek Revival period, while retaining design elements consistent with the Federal style. Mid- to late- nineteenth century styles are also represented, with significant examples of the Italianate, Romanesque Revival, and Queen Anne styles. Fabius Central School, sited opposite the First Baptist Church on the south side of Main Street, was constructed circa 1930 in the Collegiate Gothic style, and represents the principle twentieth century architectural style present in the district.

Property Name Fabius Village Historic District
Location Fabius, Onondaga County, New York

**NATIONAL REGISTER OF HISTORIC PLACES
CONTINUATION SHEET**

Section number 7 Page 2

An annotated building list describing each of the buildings and sites in the historic district follows.

Fabius Village Historic District - Annotated List of Historic Resources

Academy Street

- 7767 One and one-half story frame Gothic Revival style residence, built circa 1850. Steeply-pitched roof, intersecting gable with decorative bargeboard, clapboard exterior. Front porch with Greek Revival style posts, molded entablature and shouldered window surrounds. Contributing.
-Two-story frame barn. Contributing.
- 7771 One and one-half story frame vernacular Gothic Revival style residence, built circa 1860. Italianate-inspired tower with low-pitched pyramidal roof, pedimented window crowns and door surround, Gothic bargeboard. Vinyl siding. Contributing.
-One-story frame barn, contributing.
-Concrete carriage step, contributing.
- 7775 One and one-half story frame Greek Revival style residence, built circa 1835. Gable-fronted with partial cornice returns, molded frieze, six-over-six double-hung wood sash windows, cobblestone foundation, clapboard exterior. Side ell. Contributing.
-One-story frame barn, contributing.
- 7780 Two-story frame Italianate style residence, built circa 1870. Low pitched pyramidal roof, molded window crowns, clapboard exterior. Contributing.
-Two-story frame carriage barn, contributing.
- 7779 One and one-half story frame Greek Revival style residence, built circa 1840, modified circa 1940. Gable-fronted with paired six-over-six double-hung wood sash windows, molded frieze, partial cornice returns, frieze-band windows, clapboard exterior. Side ell with wraparound porch. Contributing.
-One-story frame shingle-clad barn, contributing.
-Frame chicken shed, contributing.
- 7783 One and one-half story frame residence, built circa 1830. Gable-fronted, asbestos shingle exterior. Contributing.
-Frame corn crib, contributing.
- Frame shed, contributing.

Property Name *Fabius Village Historic District*
Location *Fabius, Onondaga County, New York*

**NATIONAL REGISTER OF HISTORIC PLACES
CONTINUATION SHEET**

Section number 7 Page 3

- 7785 One and one-half story frame transitional Greek Revival-Gothic Revival style residence, built circa 1850. Gable-fronted main block with tripartite window, molded frieze, partial cornice returns, fluted pilasters at corners. Three-sided Gothic-inspired window bay and decorative upper-story window crown. Side ell features architrave moldings and corner-blocks around door and windows; Colonial Revival style porch circa 1900. Contributing.
- Board and batten barn, contributing.
 - Circa 1950 garage, non-contributing.

Main Street

- 7763 Two-story frame Federal style residence, built circa 1830. Gable-fronted, three bay, side hall plan, featuring Adam-inspired entrance surmounted by elliptical fanlight, with paneled door flanked by sidelights and colonettes. Windows with six-over-six double-hung wood sash, louvered fan in gable. One-story side ell with later porch. Clad with wood shingles. Contributing.
- One story frame garage, non-contributing.
- 7764 Two and one half story frame Queen Anne style residence, built circa 1885. Cross-gabled roofs, wraparound verandah with delicate scroll-sawn cutouts, turned posts and railing, lattice work. Vinyl siding. Contributing.
- Two-story frame carriage barn, contributing.
- 7767 One and one-half story Federal style residence, built circa 1830. Gable-fronted with one-story ell, modern addition at rear. Clad in aluminum siding. Contributing.
- 7769 One and one-half story frame Federal style residence, built circa 1825. Gable-ended, five bay facade with Adam-inspired door surround, sidelights; circa 1900 hipped-roof front porch addition. Clapboard exterior. Contributing.
- One-and one-half story frame, shingle-clad carriage house, contributing.
- 7770 One and one-half story frame Greek Revival style residence, built circa 1840. Two bay, flushboard facade featuring pilasters with carved anthemion design, wide entablature embellished with cast-iron frieze-band window grilles and full-length first story shutters. Fully-pedimented gable with Federal-inspired fan patterns at corners of tympanum. One story ell with Greek Revival style porch. Contributing.
- Limestone hitching post, contributing.
- 7774 Non-contributing one and one-half story frame residence circa built 1830. Heavily altered circa 1970.

Property Name *Fabius Village Historic District*
Location *Fabius, Onondaga County, New York*

**NATIONAL REGISTER OF HISTORIC PLACES
CONTINUATION SHEET**

Section number 7 Page 4

- 7775 Non-contributing two-story frame residence built circa 1830. Heavily altered, twentieth century.
-Garage, non-contributing.
- 7778 Two-story frame Federal style residence, built circa 1830. Gable-fronted, three bay facade with side hall plan, original entrance architrave, elliptical louvered attic fan. Asbestos shingle exterior circa 1940. Contributing.
-One-story frame barn, circa 1990, non-contributing.
- 7782 Two-story frame Federal style residence, built circa 1830. Gable-fronted, three bay facade with side hall plan, elliptically arched entrance with sidelights, elliptical louvered attic fan. One-story ell with Victorian porch. Vinyl sided. Contributing.
- 7783 One and one-half story frame Federal style residence, built circa 1830. Enclosed hipped-roof porch addition circa 1950. Shingle-clad. Contributing.
-One and one-half story shingle-clad carriage barn, contributing.
- 7786 "Free Will Baptist Church." Frame church building with Romanesque Revival style detail, built in 1869 by Mathias Berry. Berry lived in nearby Pompey and was a local architect-builder responsible for the design of churches in Fabius, Pompey, and Manlius. The central tower is flanked by projecting bays with hooded, triple-hung rounded arch windows; the entrance features twin glazed and paneled doors surmounted by a Gothic-inspired label molding. Tower and bays are clad in flushboard siding. Other notable details include paired rounded arch windows and decorative quatrefoil, corbelled cornice, and scroll-sawn bracket at eaves. Served as Grange Hall beginning in 1916. Contributing.
- 7787 Two-story frame Federal style residence, built circa 1830. Gable-fronted, three bay, side hall plan; altered entrance with sidelights. A Doric order frieze with triglyphs, guttae, and modillion blocks encircles the main block; a large, elliptical attic fan rests in the gable field. Façade has partial cornice returns and delicate pilasters at corners. One and one-half story ell has circa 1950s enclosed porch addition. Wood shingle exterior. Contributing.
-One and one-half story frame carriage house, contributing.
- 7790 Two-story frame Federal style residence, built circa 1830, with three bay side hall plan. Gable-fronted with one story side ell; elliptically arched entrance with sidelights, elliptical attic fan, clapboard exterior. Victorian period front stoop. Contributing.
-One story garage built circa 1980, non-contributing.

Property Name Fabius Village Historic District
Location Fabius, Onondaga County, New York

**NATIONAL REGISTER OF HISTORIC PLACES
CONTINUATION SHEET**

Section number 7 Page 5

7792/94 Two-story frame residence built circa 1830. Gable-fronted façade with flanking wings. Original Federal style door surround on 7792, clapboard exterior, and partial cornice returns on main block. Victorian scroll-sawn porch details. Altered into duplex circa 1900. Contributing.

7793 "Job Phillips Home." Two-and-one half story frame Queen Anne style residence, built in 1912. Wraparound verandah with gazebo, battered wood posts and balustrade; screened-in second story porch. Large gable with imbricated wood shingles, dormers with diamond-pane sash, fish-scale roof shingles with polychrome treatment. Contributing.
-One and one-half story frame carriage house, contributing.

North side of Main
St. at Pettit St.

First Baptist Church. Originally constructed in 1818 as a gable-fronted, frame building derived from the traditional meetinghouse form and modified with Victorian alterations. The church is three bays wide by four bays deep, clad with clapboards, with a small one-story addition on the north side. An engaged tower rises from the center bay. The entrance is set within the tower, and is composed of twin paneled doors with wood surround crowned by a rounded arch with keystone. Above the entrance are twin casement-like windows with Gothic-inspired label moldings. The upper stage of the tower features elaborately-crafted rounded arch windows with round pediments and a denticulated cornice, surmounted by a square belfry with wood quoins, paired louvered openings and bracketed cornice. The tower terminates in a spire with iron finial. Circa 1870 Italianate features include the bracketed cornice, wood quoins and segmentally arched window surrounds. East and west window openings are two stories in height and feature full-length shutters. A moderately-pitched roof with asphalt shingles covers the building. Contributing.

-Settlement period cemetery adjacent to First Baptist Church, with approximately forty grave markers, approximately twenty-five of which bear inscription; many date to circa 1820. Markers include headstones and wolfstones. Cemetery includes a monument to Josiah Moore, considered the first settler in the town of Fabius. Contributing.

7800 Fabius Central School. Two-story brick and cast stone Collegiate Gothic style building, built c. 1930. Designed by Earl Hallenbeck, a prominent regional architect of educational buildings and professor of architecture at Syracuse University. Front façade features projecting center pavilion with restrained Gothic style details, flanked on either side by wings. Fenestration on the north façade is comprised of window bands with five double-hung windows apiece, with cast stone surrounds. Gothic details include non-structural buttresses and blind cast stone Tudor arches. Contributing.

-Non-contributing one and two-story additions, circa 1960-80.

Property Name Fabius Village Historic District
Location Fabius, Onondaga County, New York

**NATIONAL REGISTER OF HISTORIC PLACES
CONTINUATION SHEET**

Section number 7 Page 6

- 7809 Non-contributing two-story frame residence, built circa 1830; heavily altered in the twentieth century.
- 7811 Non-contributing one and one-half story frame residence, built circa 1830; heavily altered in the twentieth century.
- 7815 Two-story frame Federal style residence, built circa 1830.
Five bay, gable-ended building with center hall plan and clapboard exterior; original window surrounds and sash, glazed lunettes in gable ends. Circa 1950 porch addition. Contributing.
-Large one and one-half story frame carriage house with rustic siding exterior. Contributing.
- 7818 Fabius United Methodist Church. Frame church building with clapboard and flushboard exterior, built in 1827, moved to present site in 1835. Original design derived from the traditional gable-fronted meetinghouse form. Received extensive Romanesque Revival style alterations in 1860. The façade of the original gable-fronted form was augmented by the addition of a tower with wide cornerboards and bracketed cornice. A small belfry and modern-spire surmount the tower. The entrance is composed of twin paneled doors set within a rounded arch surround. The tower is flanked on either side by rounded bays with Norman arcading and a denticulated cornice. Contributing.
- North side Main St. Non-contributing firehouse.
- 7824 Two-story frame residence, built circa 1840. Gable-fronted main block with one-and-one half story ell; asbestos shingle exterior. The building has denticulated cornices, Greek Revival style frieze band windows and molded surrounds, and clapboard on the half-story of ell. Contributing.
- 7828 One-and-one half story frame residence, built circa 1840, and altered circa 1900 with Bungalow style features and shingle exterior. Contributing.
-Two story frame carriage barn with Italianate style window and door surrounds, roundel, and clapboard exterior, contributing.
-Carriage block, contributing.
- 7829 Two-story frame Italianate style residence, built circa 1870, with earlier circa 1840 one-and-one half story Greek Revival style ell; circa 1870 picturesque style porch on ell. Clad in vinyl siding. Contributing.

Property Name Fabius Village Historic District
Location Fabius, Onondaga County, New York

**NATIONAL REGISTER OF HISTORIC PLACES
CONTINUATION SHEET**

Section number 7 Page 7

- 7830 Two-story frame Queen Anne style residence, built circa 1910, with Colonial Revival style full-length front porch. Clad in aluminum siding. Second story sleeping porch; prominent fanlight in front-facing gable which is clad with fish-scale shingles. Contributing.
-Concrete carriage block, contributing.
-One story frame auto garage circa 1920, contributing.
-In-ground swimming pool, non-contributing.
- 7833 "Stevens-Wheaton-Hamilton House." Originally a two-story frame Federal style residence with flanking wings, built circa 1830 for Henry Stevens, a local cabinetmaker. Around 1900 William Hamilton, a local businessman, commissioned Irving Skeelee to remodel the house into the present two-story frame Queen Anne style residence. The flanking wings were removed, the central portion was enlarged, and a portion of another house was added. The east block consists of a gable-fronted three bay façade with double-hung wood sash windows, molded wood surrounds, entrance with rectangular transom and sidelights, pedimented entrance porch with turned spindles, and imbricated wood shingles in the gable. The west block is a two bay, gable-ended form with wraparound verandah featuring Eastlake detail. For a brief time during the 1920s, the house served as the local post office. Clapboard exterior. Contributing.
- 7836 One and-one half story frame gable-fronted residence, built circa 1830, with a one-story, gable-ended ell with porch. Porch altered with Victorian era details. Shingle-clad exterior. Contributing.
-One story frame barn, contributing.
- 7839 One-and-one half story frame temple-fronted Greek Revival style residence, built circa 1840. Five bay façade with handsomely executed trabeated entrance featuring leaded transom and sidelights, and molded wood surround. Windows are double-hung with six-over-six wood sash, with shouldered full-length surrounds and raised panels. Unfluted pilasters frame the first story. A plain entablature is carried by four fluted Doric columns and punctuated by rectangular frieze band windows with leaded grilles. The building features a fully-pedimented gable with wide frieze band, and two six-over-six windows set in the tympanum. Clapboard exterior. Contributing.
-One-story garage addition, circa 1950; non-contributing.
- 7840 Two-story gable-fronted frame Greek Revival style residence, built circa 1840, with flanking period wings. Pavilion features two bay façade with full length, double-hung windows on the first story, six-over-six double hung wood sash windows on the second story, molded frieze and partial cornice returns. Flanking wings feature Ionic order columns with large volutes carrying a plain entablature, and full-length double-hung windows; clad in vinyl siding. Contributing.
-Circa 1920 one-story frame auto garage, contributing.

Property Name *Fabius Village Historic District*
Location *Fabius, Onondaga County, New York*

**NATIONAL REGISTER OF HISTORIC PLACES
CONTINUATION SHEET**

Section number 7 Page 8

- 7841 Two-story frame Italianate style residence, circa 1870, with circa 1850 one-story ell at rear. Wood clapboard exterior, double-hung first and second-story windows with molded surrounds, shallow hipped roof, period porch. Contributing.
- 7846 "Fabius Hardware." Two-story frame commercial building, built circa 1880. Three bay façade with paired double-hung window in the center bay, molded wood surrounds, bracketed cornice, wood clapboard siding, and shallow hipped-roof; non-historic front porch addition above altered storefront. Contributing.
- 7852 Two-story frame Italianate style residence, built circa 1880. Two-story polygonal window bay, original molded window surrounds, bracketed cornice, and altered porch. Novelty siding. Contributing.

Pettit Street

- 1345 Two-story frame Federal style residence, built circa 1830, with two-story ell and circa 1900 enclosed front porch addition. Clad in aluminum siding. Contributing.
-One-and-one half story carriage house, contributing.
-Circa 1900 shed, contributing.
- 1348 "Fabius Select School." This building represents approximately one-half of the original school and is currently a residence. Two-story frame building, built circa 1840; gable-ended Greek Revival form with twentieth century alterations. Wood clapboard siding. The school was sold to District Number Nine in 1849 and served as Fabius Union School until 1931. Contributing.
- 1351 Two-story frame Queen Anne style residence, built circa 1900. Clad in vinyl siding. Contributing.
-Two-story vertical board barn with attached privy, contributing.

Fabius Evergreen Cemetery. A vernacular expression of the picturesque rural cemetery design, completed in October of 1865. The cemetery is twelve and one-half acres in size and features winding paths, roads, and modestly landscaped features. A special section, designated as "The Soldiers Circle," was set aside to commemorate the lives of those lost in war. The cemetery includes family plots and one masoleum. Contributing.

8. Significance

Applicable National Register Criteria

(Mark "x" in one or more boxes for the criteria qualifying the property for National Register listing.)

- A** Property is associated with events that have made a significant contribution to the broad patterns of our history.
- B** Property is associated with the lives of persons significant in our past.
- C** Property embodies the distinctive characteristics of a type, period, or method of construction or represents the work of a master, or possesses high artistic values, or represents a significant and distinguishable entity whose components lack individual distinction.
- D** Property has yielded, or is likely to yield, information important in prehistory or history.

Criteria Considerations

(Mark "x" in all the boxes that apply.)

Property is:

- A** owned by a religious institution or used for religious purposes.
- B** removed from its original location.
- C** a birthplace or grave.
- D** a cemetery.
- E** a reconstructed building, object, or structure.
- F** a commemorative property.
- G** less than 50 years of age or achieved significance within the past 50 years.

Narrative Statement of Significance

(Explain the significance of the property on one or more continuation sheets.)

Areas of Significance

(enter categories from instructions)

Agriculture _____

Architecture _____

Period of Significance

1800- 1935

Significant Dates

Significant Persons

(Complete if Criterion B is marked above)

Cultural Affiliation

Architect/Builder

9. Major Bibliographical References

Bibliography

(Cite the books, articles, and other sources used in preparing this form on one or more continuation sheets.)

Previous documentation on file (NPS):

- preliminary determination of individual listing (36 CFR 67) has been requested
- previously listed in the National Register
- previously determined eligible by the National Register
- designated a National Historic Landmark
- recorded by Historic American Buildings Survey # _____
- recorded by Historic American Engineering Record # _____

Primary location of additional data:

- State Historic Preservation Office
- Other State agency
- Federal agency
- Local government
- University
- Other Name of repository: _____

Property Name *Fabius Village Historic District*
Location *Fabius, Onondaga County, New York*

**NATIONAL REGISTER OF HISTORIC PLACES
CONTINUATION SHEET**

Section number 8 Page 1

8. Narrative Statement of Significance

Fabius Village Historic District is architecturally and historically significant as an intact, representative example of an early-nineteenth century residential and agricultural community in central New York State. The hamlet retains a significant collection of buildings and structures, set in relatively intact streetscapes, that effectively convey a sense of the community's early growth and subsequent development between 1800 and 1930. The district includes examples of national architectural styles popular during the period of significance, including a substantial concentration of Federal and Greek Revival buildings. Other styles similarly represented include the Gothic Revival, Romanesque Revival, Italianate, Queen Anne and Collegiate Gothic. The village, set amidst open and undeveloped farmland and wooded hills, is remarkably well preserved, recalling the scale and character of a typical nineteenth century farm-oriented village in Central New York.

The early development of the area that would become the Village of Fabius is closely related with the settlement patterns that commenced in this region of New York State following the Revolution. Following the British defeat, the Legislature of New York State, by an act passed in 1789, directed the Surveyor General to lay out tracts of land, now referred to as the "military lots." The military townships were ten miles square and divided into one hundred square lots. Beginning in the 1790s veterans received a one square mile share of the surveyed lands, which they either sold off to speculators and settlers, or settled themselves. The town of Fabius, representative of this surveyed military tract, was taken from Pompey in 1798, and like many other townships in the region was first settled by New Englanders. During the 1790s settlers from Stockbridge, Massachusetts and communities in Connecticut erected the first crude dwellings in the future village of Fabius, followed in 1800 by the first frame house, credited to Josiah Moore.¹ Among these early settlers was Colonel Elijah St. John, apparently a veteran of the war against England.

Fabius witnessed significant growth in the first half of the nineteenth century, and by 1810 the population of the town was upwards of nineteen-hundred.² The first major factor that influenced the surge in the village's settlement was the completion around 1810 of the Hamilton and Skaneateles Turnpike, one of many east-west roads that preceded the railroads and canals as the major transportation routes of the nineteenth century. The Hamilton and Skaneateles Turnpike, by all indication, formed a subsidiary branch of the extensive Great Western Turnpike, one of the two major routes west from Albany and the Hudson River. This route linked the hamlet with other small villages in the region, in addition to the larger urban areas further east, creating a viable link for the marketing of surplus agricultural products. Fabius developed at the intersection of the turnpike and the north-south road leading from Manlius. By 1820 a small business district, two inns and a tannery had developed on the east side of town, stimulated by the new turnpike and the improvement of roads between Fabius and Syracuse. On the west side, a third hotel and grist mill also appeared. New mills, short of those distant in Herkimer, were established on the nearby Butternut Creek; the first of these, a sawmill, opened in 1800 and represented the town's first business enterprise. The Baptist Society of Fabius, organized in 1806, constructed the village's first church. Built in 1818 and known as The First Baptist Church, it reflects the traditional New England meetinghouse form common in the late eighteenth and early nineteenth centuries and carried west by transplanted settlers.

¹ Joshua Clark, *Onondaga; or Reminiscences of Earlier and Later Times* (Syracuse: Stoddard and Babcock, 1849), 332.

² *ibid.*

Property Name Fabius Village Historic District
Location Fabius, Onondaga County, New York

**NATIONAL REGISTER OF HISTORIC PLACES
CONTINUATION SHEET**

Section number 8 Page 2

Throughout the 1820s and early 1830s, small frame residences of the vernacular tradition began to increasingly line the edges of the turnpike. A number of the extant buildings included within the district date from this period and reflect elements of the late Federal and early Greek Revival period. Buildings of this type are distinguished by their simple proportions, austere facades, and elliptically-shaped fanlights and attic louvers. Inspired by the designs popularized by Robert Adams in England, the Federal style refined the robust character of Georgian architecture, and featured classically-inspired motifs borrowed from the Roman country houses of Herculaneum and Pompeii. Rural, vernacular interpretations of the Federal style, like those common in Fabius, were the work of local carpenter builders, based on designs available in period builders guides. The two-story residences at 7782 and 7763 Main Street are typical of late Federal design. Constructed circa 1830, these houses feature gable-fronted, three bay façades with side hall entry plans, elliptically-arched entrances with sidelights, and elliptical attic louvers. Like the majority of residential architecture constructed in Fabius during this period, these buildings are transitional forms, reflecting the gable-fronted orientation associated with the Greek Revival period while exhibiting Federal design vocabulary. Similar in design is the residence at 7787 Main Street. Although altered with additions to the one and one-half story ell, the building retains a large, louvered attic fan and an elaborately-crafted Doric order frieze. The house at 7769 Main Street, constructed circa 1825, is one of two Federal period residences in the nominated district that is built with a gable-ended, five bay façade and center hall entry plan more commonly associated with this style in New York. It features a delicately crafted door surround with sidelights.

Two of the village's religious edifices were erected during this period, and although later modified with Victorian era alterations, they reflect the prevailing building traditions common at the time. The First Baptist Church, constructed in 1818, and the United Methodist Church, built in 1826, were built using designs based on the traditional, timber frame, gable-fronted meetinghouse form common throughout the region. The meetinghouse evolved in New England during the colonial period in response to the religious establishments of the old world and was subsequently transplanted in central and western New York. Vernacular examples were common throughout rural New York in the first decades of the nineteenth century. "The first Baptist Society of Fabius" organized in November of 1806, and met in the houses of local members until completion of the First Baptist Church, a dozen years later. The property on which the church was built was leased for the price of twenty-five cents per year for a hundred-year term. Twenty-five dollars were paid up front, covering the first hundred years of tenancy. In 1826, the First Society of the Methodist Episcopal Church of Fabius organized, and, following years of worship in individual's homes, raised the necessary funds to erect a house of worship. Meeting in District School Number Nine, the congregation raised seven-hundred and fifty dollars by subscription, with pledges including day labor, grain, stock and lumber.³ The building was specified to be forty-eight feet long and thirty-six feet wide; an 1826 record reads "this house is to be erected in the course of next summer and finished as soon as may be."⁴ In 1835 the congregation purchased the present site on the former turnpike and the church was dragged by oxen to its current location.

By the mid-1830s, the population of the town had grown in excess of three-thousand residents and the village continued to evolve physically. In 1836, the town could list amongst its business enterprises four grist mills, fifteen saw mills, twenty-two fulling mills, three asheries, and five taneries. The most significant of a

³Sylvia Edwards, "Fabius United Methodist Church Sesqui-Centennial History, 1826-1976."

⁴ *ibid*

Property Name Fabius Village Historic District
Location Fabius, Onondaga County, New York

**NATIONAL REGISTER OF HISTORIC PLACES
CONTINUATION SHEET**

Section number 8 Page 3

small number of manufacturing interests was the Agricultural Works of Bramer and Pierce, established in 1838 by David Bramer and located on the turnpike just east of the village core. Bramer's shop produced horse-powered threshing machines and other related agricultural implements. The business thrived even as the local economy flagged, continuing to produce mechanized farm equipment into the later nineteenth century.

The period of the 1830s and early 1840s represented the village's greatest era of growth and prosperity. Representative of this period are significant examples of the Greek Revival style, the dominant style for domestic, civic and ecclesiastical architecture during the late 1830s and early 1840s in New York. Nationally, the Greek Revival style had first begun to supplant the Federal style in the 1820s, representing a conscious break from the English derived tastes from which the latter evolved. Following the War of 1812, American popular taste moved increasingly away from British influence. In architecture, this intellectual break, in combination with a revival of interest in classical antiquity following the excavations at Herculanaeum and Pompeii, and an admiration for the struggle of Greece in her war for independence from the Ottoman Empire, led to a new expression of American ideals. America, as a new nation, sought and found in the ancient city states of Greece the roots of democracy, and in her symbols and styles created a design vocabulary reflecting native aspirations and optimism for the future. Vernacular residential architecture of the Greek Revival style is typified by bilateral symmetry, trabeated entryways with sidelights and rectangular transoms, fully pedimented front facing gables, and wide, molded frieze bands. More distinguished examples featured columned porticoes and flushboard exteriors. Buildings were painted white in an attempt to capture the essence of stone Greek temples.

Fabius features examples of the Greek Revival style that include both simple, regional interpretations and more mature, distinguished manifestations. The one and one-half story frame house at 7775 Academy Street, built circa 1835, typifies the style as commonly expressed in the rural northeast. The building features a gable-fronted orientation, the façade embellished by a wide, molded frieze band and partial cornice returns. Similar in design is the residence at 7779 Academy Street; in addition to the above-mentioned features, the building also features frieze band windows and a side ell, the latter which became increasingly common during this period. The two-story frame residence at 7840 Main Street is built using a plan popularized by Minard Lafever, one of a handful of men authoring builder's guides during the first decades of the nineteenth-century. The plan featured a center pavilion flanked on either side by wings with columned porches. The wide entablature of the ells is carried by stout Ionic columns with large volutes.

Two of the frame residences built in the village during the early 1840s display elements representative of a more advanced expression of the Greek Revival style. The house at 7770 Main Street, with its flushboard façade and fully-pedimented gable, is a small but nonetheless distinguished example. The building features elaborate cast-iron grilles set within the windows of the molded entablature and carved pilasters with anthemion. The use of the fan pattern at the corners and tympanum and pilasters reflects the persistence of older, Federal style detail. The frame residence at 7839 Main Street is likewise distinguished from its more provincial peers. The building features a full-length Doric-columned portico with a wide molded entablature, and represents the only temple-fronted example in the district. These buildings recall the age of prosperity enjoyed by Fabius around mid-century and reflect an understanding of the currently accepted intellectual currents of the day.

Property Name *Fabius Village Historic District*
Location *Fabius, Onondaga County, New York*

**NATIONAL REGISTER OF HISTORIC PLACES
CONTINUATION SHEET**

Section number 8 Page 4

Contemporary with the culmination of the classically-inspired Greek Revival style in New York during the early 1840s was the growing acceptance of the romantic movement and the ideals espoused by Andrew Jackson Downing (1815-1852) and Alexander Jackson Davis (1803-1892). The picturesque mode challenged the ideals of classicism and found its expression in rural areas with the "carpenter gothic" cottage. The first application of the picturesque ideal to residential architecture was seen in the Gothic Revival designs of Davis, who, in association with Downing, carried the ideas of the movement into the mainstream currents. Like other picturesque-inspired architecture of the day, cottage design was a product of the proliferation of pattern books, the abundance of lumber, and the development of balloon-framing. The development of the scroll saw, widely used by the 1840s, allowed for the creation of elaborate, Gothic inspired bargeboards, trademark of the style. The influence of this movement can be seen in a small number of buildings in the nominated district. The house at 7767 Academy Street, built circa 1850, features the intersecting front-gable, steeply-pitched roof and decorative bargeboards most commonly associated with the style. An interesting transitional example is the house at 7785 Academy Street. This one and one-half story frame residence, built circa 1850, features the molded frieze, architrave moldings and fluted pilasters common during the Greek Revival period, while incorporating a Gothic-inspired window bay.

Beginning in the mid- to late-1840s the surrounding town of Fabius witnessed a significant decrease in growth, and many business enterprises were forced into closure, resulting in a decline in population. The census of 1845 listed the population of the town at approximately twenty-five hundred. The rural population of New York declined considerably following the decade of the 1830s with an increasing migration to the larger urban industrial centers. The village, however, remained an important agricultural service center, serving the needs of local farm families with services including stores, professional offices, houses of worship, a school, and tradesman.

Integral to the development of Fabius from the time of settlement onward was the growth of agriculture and related industries. The village's early settlers marketed surplus agricultural goods at the distant markets of Utica, Whitestown and Herkimer.⁵ Later, with the improvement of roads to Syracuse, farmers were able to transport products north and ship them east, via the Erie Canal. The district retains a number of agriculture-related structures, reflecting this agrarian heritage. Academy Street features houses with original frame outbuildings including barns, a chicken shed, and a corn-crib, indicating their use as farms on the periphery of the village center. Following the Civil War, dairy-related enterprises developed and helped stabilize the local economy. Statistics from 1865 indicate the town's role as a leading agricultural center in Onondaga County. The town was credited that year with having over three-thousand milk cows, the highest number in all the county. Holstein-Friesian dairy cattle, introduced to the region in the 1880s, eventually helped central New York evolve as the milk shed for the entire state. Most notable of the late nineteenth century dairy-related enterprises in the village was The Fabius Creamery Company, incorporated in 1893. The company took over a creamery built in 1890 by John S. Carter of Syracuse and began producing butter, cheese, and milk sugar for transport to large urban markets. Augmenting the town's development as a major dairy center was the 1854 completion of the Syracuse, New York and Binghamton Railroad, passing several miles west of the village at Apulia Station. Railroads were an essential component of the development of the dairy industry in New York, providing rural areas with a fast and vital link to distant urban markets. The appearance of the railroad within

⁵ Clark, *Onondaga*, 333.

Property Name *Fabius Village Historic District*
Location *Fabius, Onondaga County, New York*

**NATIONAL REGISTER OF HISTORIC PLACES
CONTINUATION SHEET**

Section number 8 Page 5

close proximity to the village provided a significant stimulus to the growth of the town's dairy-related enterprises. Milk and butter produced by the Fabius Creamery Company were shipped by railroad to S.S. Brown and Company of New York City for distribution. Hops were also vital to the area's agriculture-dependent economy. 1865 statistics indicate that the town produced over 24,000 pounds the year before, likewise surpassing all towns in the county.⁶ Cabbage, peas, ginseng, and maple syrup also contributed to the list of cash crops.

Sporadic building continued in Fabius during the 1860s and 1870s, with residential architecture reflecting the new tastes of Victorian era. Following the gradual demise of the classically-inspired ideals of the first half of the century came the full development of the Romantic movement. Common throughout America during the decade of the 1860s was the emergence of the Italianate style, popular in city and countryside alike well into the 1880s. Inspired by the country villas of Italy, buildings of this style featured a vertical emphasis, with shallow-hipped roofs, elongated windows, projecting cornices with brackets, and cubic massing. The frame residence at 7852 Main Street is among the hamlets best remaining examples of the style. Built circa 1880, the building features a two-story polygonal window bay, molded window surrounds, a bracketed projecting cornice, and narrow pilasters. The Fabius Hardware store, the sole remaining commercial building located in the nominated district, reflects the simplicity of the style as applied to modest, non-residential uses. Older buildings were also updated to reflect the popularity of current tastes. The First Baptist Church was modified circa 1870 with a number of Italianate style features. Alterations included wood quoins, segmentally arched window crowns, and bracketed cornice, in addition to a substantial remodeling of the bell tower. Residences, such as the Federal style building at 7790 Main Street, also received modifications, in this case an Italianate style porch.

Likewise related to developments during the Victorian era was the completion in 1865 of the Fabius Evergreen Cemetery. A vernacular expression of picturesque Rural Cemetery design, the plan features the winding roads and romantic plantings characteristic of the movement. The Rural Cemetery movement gained popularity in New York during the mid-nineteenth century as a response to the increased urbanization and industrialization of the nation and was closely linked to the parks movement. Landscape designers sought to "improve" nature and create controlled rural environments, for passive recreation and contemplation. The Fabius Evergreen Cemetery is representative of these precepts and their influence on cemetery design and funerary art in small, rural towns.

Also emerging during the Victorian era was the Romanesque Revival style, inspired by the medieval forms of western Europe and characterized by the use of round-arched windows and the application of decorative arcading beneath the cornice. The style first appeared during 1850s, gaining increased acceptance until falling from favor in the 1890s. Constructed in 1869 by Mathias Berry, a local architect-builder of religious buildings in Fabius, Pompey, and Manlius, the former Free Will Baptist Church is an unassuming vernacular interpretation of the style. The central tower is flanked on either side by projecting bays with hooded rounded-arch windows; notable features include a corbelled cornice. Following a decrease in church membership the building became home to the Fabius Grange, in 1916. Other buildings were likewise modified

⁶ Hamilton Child, *Gazetteer and Business Directory of Onondaga County, New York, 1868-69* (Syracuse: The Syracuse Journal Office, 1868). Statistics for 1865 are quoted from this source.

Property Name *Fabius Village Historic District*
Location *Fabius, Onondaga County, New York*

**NATIONAL REGISTER OF HISTORIC PLACES
CONTINUATION SHEET**

Section number 8 Page 6

to accept the new tastes of the period. The Fabius United Methodist Church was modified in 1860 with Romanesque Revival alterations, including rounded bays with Norman arcading.

Representing the culmination of the Victorian era in Fabius are four residential Queen Anne buildings, dating from approximately 1885-1910. Queen Anne style architecture first gained widespread American exposure at the 1876 Centennial Exposition in Philadelphia, where examples of the English style generated considerable interest. Picturesque rooflines, expressive details, a variety of textures, and elaborate woodwork are all characteristic features. Unlike the English precedent, however, the style borrowed Colonial era vocabulary, including the Palladian window and small pane glass, which it incorporated creating a uniquely American idiom. The house at 7764 Main Street is a relatively early example, dating to circa 1885. Restrained in detail, it features the broad, intersecting gables and sweeping verandah common to the style. The frame residence at 7833 Main Street gained its present Queen Anne form around 1900. At that time, the eastern block, dating to circa 1830, and the western block, circa 1870, were joined. The building was then embellished with a number of Queen Anne style features, including a broad, front-facing gable with imbricated shingles, a porch with elaborately carved woodwork, and a verandah with Eastlake style details. The modifications were commissioned by William Hamilton, secretary-treasurer of the Fabius Creamery Company. A more elaborate treatment is seen on the former Job Phillips house at 7793 Main Street. The house was built in 1912 by Phillips, owner of several dairy farms in the Fabius area and president of the Fabius Creamery Corporation. The building is two and one-half stories in height and features a proliferation of Victorian embellishment, including a wraparound verandah with gazebo, a broad front-facing gable with imbricated wood shingles, and dormers with diamond-pane sash. The Phillips house represents the last of the residential buildings included in the nominated district, a turn of the century Victorian expression of the prosperity of local agriculture.

The Fabius Central School, completed in 1931 in the Collegiate Gothic style, represents the principle twentieth century architectural contribution in the nominated district. The school was designed by Earl Hallenbeck, a prominent architect of educational buildings and professor of architecture at Syracuse University, 1902-1934. Hallenbeck designed schools throughout the region, in addition to religious edifices, and was responsible for the design of Slocum Hall and Archbold Stadium on the Syracuse campus. The building is the culmination of an educational tradition dating back to the early settlement period. Records indicate that the first school in Fabius was of log construction and built shortly after settlement.⁷ Sometime around 1840 the Fabius Academy was erected on the southeast corner of what is now Academy and Pettit Street. The house at 1348 Pettit Street represents approximately one-half of the former schoolhouse. The present gable-ended frame building was intersected on the north side by a similar two-story block with its gable oriented toward Pettit Street. A small bell tower rose where the two blocks met. The present residence retains a number of original design features that link it to the Greek Revival period, including the triangular louver in the south gable field and a wide frieze band. The original building served first as a select school, until its sale to the Fabius School Board in 1849, when it became Fabius Union School. The school continued in its role until 1929, when a state inspection deemed the building unsafe. The building was modified for use as a residence circa 1935 with the removal of the north block and an overlay of craftsman-like detail. In 1930 the school district was centralized and the construction of a new edifice commenced. The Fabius Central School represents the final phase in the

⁷Clark, *Onondaga*, 332.

*Property Name Fabius Village Historic District
Location Fabius, Onondaga County, New York*

**NATIONAL REGISTER OF HISTORIC PLACES
CONTINUATION SHEET**

Section number 8 Page 7

historic development of the hamlet. The school is a restrained Collegiate Gothic example, an eclectic style that alluded to the architecture of English Universities. Along with the Colonial Revival, it was often drawn upon as an ideal choice for educational architecture in New York during the 1930s.

In the decades since the construction of the Fabius Central School, relatively few alterations have affected the historic core of the village. The brick firehouse on Main Street represents the only significant intrusion, fortunately maintaining a setback similar to those throughout the nominated district. The Village of Fabius Historic District represents a cohesive grouping of historic resources that recall the growth and development of a small, agriculture-reliant village in predominately rural central New York. The hamlet retains a significant collection of early to mid-nineteenth century resources, including a substantial concentration of Federal and Greek Revival residential forms. The village similarly retains two religious edifices, originally constructed using designs based the traditional frame meetinghouse form common in New England, representative of the areas early heritage. Developing on the frontier of rural New York in the early nineteenth century, the Village of Fabius Historic District remains largely unaltered, a reminder of the regions early history and the success of local agriculture.

Property Name *Fabius Village Historic District*
Location *Fabius, Onondaga County, New York*

**NATIONAL REGISTER OF HISTORIC PLACES
CONTINUATION SHEET**

Section number 9 Page 1

9. Major Bibliographical References

Child, Hamilton. *Gazetteer and Business Directory of Onondaga County, New York, 1868-69*. Syracuse: The Syracuse Journal Office, 1868.

Clark, Joshua. *Onondaga; or Reminiscences of Earlier and Later Times*. Syracuse: Stoddard and Babcock, 1849.

Edwards, Sylvia. "Fabius United Methodist Church Sesqui-Centennial History, 1826-1976."

Flick, Alexander, ed. *History of the State of New York 5*. Port Washington, New York: Ira Friedman, Inc., 1962.

Fabius Village Historic District
Name of Property

Onondaga County, New York
County and State

10. Geographical Data

Acreage of Property Approximately Seventy Acres

UTM References

(Place additional boundaries of the property on a continuation sheet.)

1 18 419678 4742752
Zone Easting Northing

2 18 419618 4742249
Zone Easting Northing

3 18 419456 4742230
Zone Easting Northing

4 18 419199 4742456
Zone Easting Northing

See continuation sheet

Verbal Boundary Description

(Describe the boundaries of the property on a continuation sheet.)

Boundary Justification

(Explain why the boundaries were selected on a continuation sheet.)

11. Form Prepared By

name/title William E. Krattinger, Historic Preservation Specialist

organization NYS OPRHP, Field Services Bureau date 27 July 2000

street & number Pebbles Island telephone (518) 237-8643 ext. 3265

city or town Waterford state NY zip code 12188

Additional Documentation

Submit the following items with the completed form:

Continuation Sheets

Maps

A **USGS map** (7.5 or 15 minute series) indicating the property's location.

A **Sketch map** for historic districts and properties having large acreage or numerous resources.

Photographs

Representative black and white photographs of the property.

Additional items

(Check with the SHPO or FPO for any additional items)

Property Owner

(Complete this item at the request of SHPO or FPO.)

name/title _____

street & number _____ telephone _____

city or town _____ state _____ zip code _____

Paperwork Reduction Act Statement: This information is being collected for applications to the National Register of Historic Places to nominate properties for listing or determine eligibility for listing, to list properties, and to amend existing listings. Response to this request is required to obtain a benefit in accordance with the National Historic Preservation Act, as amended (16 U.S.C. 470 *et seq.*).

Estimated Burden Statement: Public reporting burden for this form is estimated to average 18.1 hours per response including time for reviewing instructions, gathering and maintaining data, and completing and reviewing the form. Direct comments regarding this burden estimate or any aspect of this form to the Chief, Administrative Services Division, National Park Service, P.O. Box 37127, Washington, DC 20013-7127; and the Office of Management and Budget, Paperwork Reductions Projects (1024-0018), Washington, DC 20503.

Property Name *Fabius Village Historic District*
Location *Fabius, Onondaga County, New York*

**NATIONAL REGISTER OF HISTORIC PLACES
CONTINUATION SHEET**

Section number 10 Page 1

10. Geographical Data

Verbal Boundary Description

The boundary for the Fabius Village Historic District is shown as the heavy black outline on the enclosed map, entitled "Fabius Village Historic District, Fabius, Onondaga County, New York."

Boundary Justification

The Fabius Village Historic District encompasses forty-four residential, commercial, religious, civic and educational properties in the historic core of the Village of Fabius, Onondaga County, New York. The nominated district, approximately seventy acres in extent, encompasses portions of Main, Academy and Pettit Streets. The boundaries have been drawn to include the greatest concentration of contributing extant resources in the village. The entire core of the village has been included within the boundaries of the proposed district (see attached boundary map and Section 7).

UTM References

18/ 1	419678	²⁷⁵² 4742249 ?
2	419618	4742249
3	419456	4742230
4	419199	4742456
5	418984	4743053
6	419388	4743142
7	419595	4742833

Property Name *Fabius Village Historic District*
Location *Fabius, Onondaga County, New York*

**NATIONAL REGISTER OF HISTORIC PLACES
CONTINUATION SHEET**

Photographs Page 1

Photographs taken by Stacia Partin June 2000

1. 7767 Academy Street
2. 7771 Academy Street
3. 7775 Academy Street
4. 7780 Academy Street
5. 7779 Academy Street
6. 7783 Academy Street
7. 7785 Academy Street
8. 7763 Main Street
9. 7764 Main Street
10. 7767 Main Street
11. 7769 Main Street
12. 7770 Main Street
13. 7774 Main Street
14. 7775 Main Street
15. 7778 Main Street
16. 7782 Main Street
17. 7783 Main Street on left
18. "Free Will Baptist Church," 7786 Main Street
19. 7787 Main Street
20. 7790 Main Street
21. 7792 Main Street
22. "Job Phillips Home," 7793 Main Street
23. First Baptist Church
24. Burial ground adjacent to Baptist Church
25. Fabius Central School
26. 7809 Main Street on left, 7811 Main Street on right
27. 7815 Main Street
28. Fabius United Methodist Church
29. Firehouse on left
30. 7824 Main Street
31. 7828 Main Street
32. 7829 Main Street
33. 7830 Main Street
34. "Stevens-Wheaton-Hamilton House," 7833 Main Street
35. 7836 Main Street
36. 7839 Main Street
37. 7840 Main Street
38. 7841 Main Street
39. "Fabius Hardware," 7846 Main Street

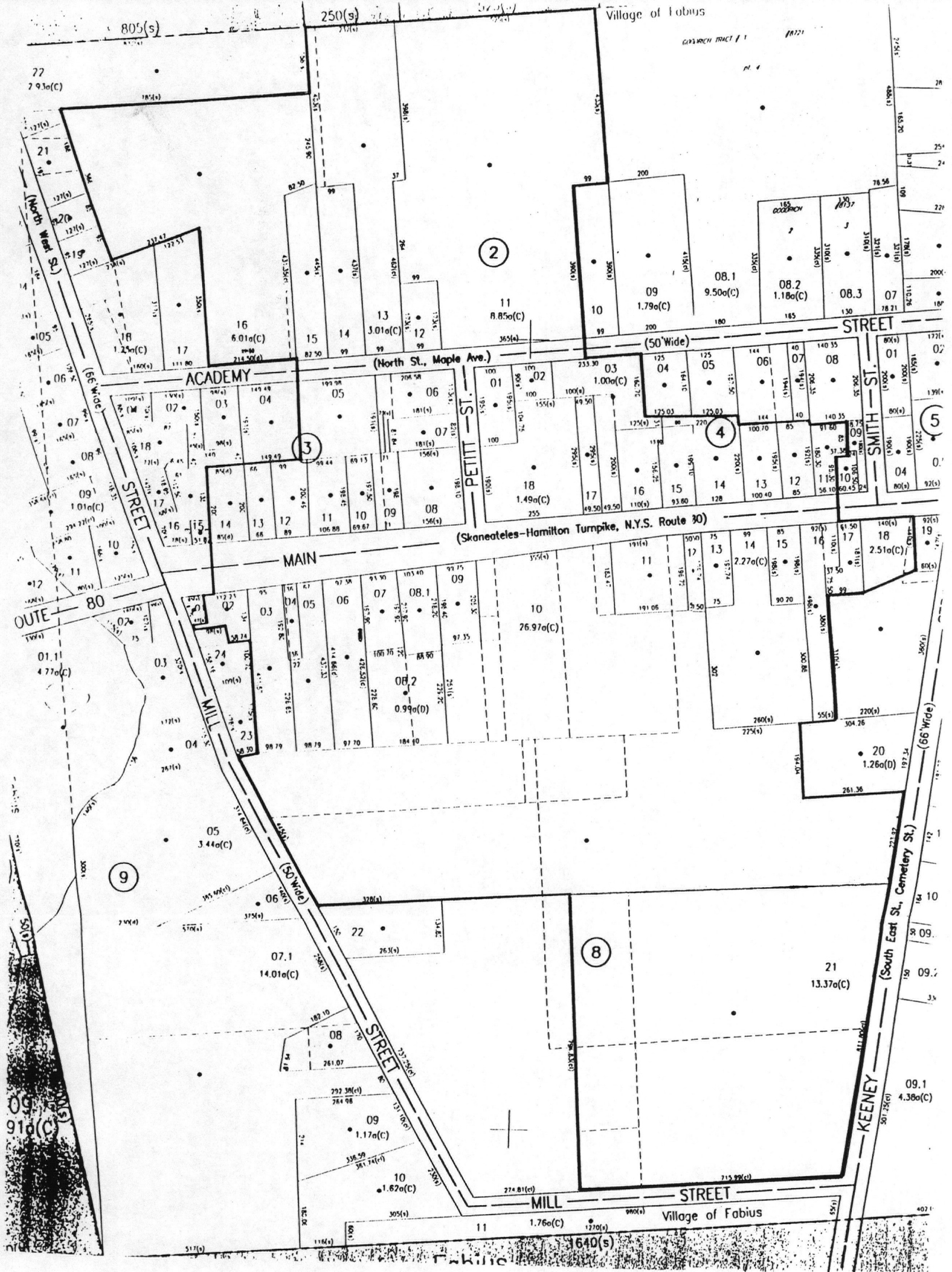
Property Name Fabius Village Historic District
Location Fabius, Onondaga County, New York

**NATIONAL REGISTER OF HISTORIC PLACES
CONTINUATION SHEET**

Photographs Page 2

Continued

- 40. 7852 Main Street
- 41. 1345 Pettit Street
- 42. "Fabius Select School," 1348 Pettit Street
- 43. 1351 Pettit Street
- 44. Looking west down south side of Main Street



Fabius Village Historic District
 Fabius, Onondaga County, New York
 Proposed District Boundaries

KEY	
Photo Angle	
Boundary	
Non-Contributing	
Scale: 1 inch equals 310 feet	

UNITED STATES DEPARTMENT OF THE INTERIOR
NATIONAL PARK SERVICE

NATIONAL REGISTER OF HISTORIC PLACES
EVALUATION/RETURN SHEET

REQUESTED ACTION: NOMINATION

PROPERTY NAME: Fabius Village Historic District

MULTIPLE NAME:

STATE & COUNTY: NEW YORK, Onondaga

DATE RECEIVED: 10/23/00 DATE OF PENDING LIST: 11/06/00
DATE OF 16TH DAY: 11/22/00 DATE OF 45TH DAY: 12/07/00
DATE OF WEEKLY LIST:

REFERENCE NUMBER: 00001409

REASONS FOR REVIEW:

APPEAL: N DATA PROBLEM: N LANDSCAPE: N LESS THAN 50 YEARS: N
OTHER: N PDIL: N PERIOD: N PROGRAM UNAPPROVED: N
REQUEST: N SAMPLE: N SLR DRAFT: N NATIONAL: N

COMMENT WAIVER: N

ACCEPT RETURN REJECT 11/22/00 DATE

ABSTRACT/SUMMARY COMMENTS:

Entered in the
National Register

RECOM./CRITERIA _____

REVIEWER _____ DISCIPLINE _____

TELEPHONE _____ DATE _____

DOCUMENTATION see attached comments Y/N see attached SLR Y/N



Fabius Village Historic District
Onondaga County, New York
Photographed by Stacia Partin, June 2000
Negatives at NYS OPRHP

/

005 036



**Fabius Village Historic District
Onondaga County, New York
Photographed by Stacia Partin, June 2000
Negatives at NYS OPRHP**

2

004 036 NNN ----- 16.08.00 ELITE PHOTO



3

Fabius Village Historic District
Onondaga County, New York
Photographed by Stacia Partin, June 2000
Negatives at NYS OPRHP



4

**Fabius Village Historic District
Onondaga County, New York
Photographed by Stacia Partin, June 2000
Negatives at NYS OPRHP**

007 036



Fabius Village Historic District
Onondaga County, New York
Photographed by Stacia Partin, June 2000
Negatives at NYS OPRHP

5



Fabius Village Historic District
Onondaga County, New York
Photographed by Stacia Partin, June 2000
Negatives at NYS OPRHP

6



Fabius Village Historic District
Onondaga County, New York
Photographed by Stacia Partin, June 2000
Negatives at NYS OPRHP

7



Fabius Village Historic District
Onondaga County, New York
Photographed by Stacia Partin, June 2000
Negatives at NYS OPRHP

8

018 03



**Fabius Village Historic District
Onondaga County, New York
Photographed by Stacia Partin, June 2000
Negatives at NYS OPRHP**

9



Fabius Village Historic District
Onondaga County, New York
Photographed by Stacia Partin, June 2000
Negatives at NYS OPRHP

10



Fabius Village Historic District
Onondaga County, New York
Photographed by Stacia Partin, June 2000
Negatives at NYS OPRHP

//

021 020



**Fabius Village Historic District
Onondaga County, New York
Photographed by Stacia Partin, June 2000
Negatives at NYS OPRHP**

12

920 610



Fabius Village Historic District
Onondaga County, New York
Photographed by Stacia Partin, June 2000
Negatives at NYS OPRHP

13



**Fabius Village Historic District
Onondaga County, New York
Photographed by Stacia Partin, June 2000
Negatives at NYS OPRHP**

14



**Fabius Village Historic District
Onondaga County, New York
Photographed by Stacia Partin, June 2000
Negatives at NYS OPRHP**

15

020 037



Fabius Village Historic District
Onondaga County, New York
Photographed by Stacia Partin, June 2000
Negatives at NYS OPRHP

16

016



024 036 420
11
Fabius Village Historic District
Onondaga County, New York
Photographed by Stacia Partin, June 2000
Negatives at NYS OPRHP



**Fabius Village Historic District
Onondaga County, New York
Photographed by Stacia Partin, June 2000
Negatives at NYS OPRHP**

18

015 037 NNNN 16.00.00 ELITE PHOTO



Fabius Village Historic District
Onondaga County, New York
Photographed by Stacia Partin, June 2000
Negatives at NYS OPRHP

19



**Fabius Village Historic District
Onondaga County, New York
Photographed by Stacia Partin, June 2000
Negatives at NYS OPRHP**

10



**Fabius Village Historic District
Onondaga County, New York
Photographed by Stacia Partin, June 2000
Negatives at NYS OPRHP**

41

011 037



Fabius Village Historic District
Onondaga County, New York
Photographed by Stacia Partin, June 2000
Negatives at NYS OPRHP

22



**Fabius Village Historic District
Onondaga County, New York
Photographed by Stacia Partin, June 2000
Negatives at NYS OPRHP**

23



24

**Fabius Village Historic District
Onondaga County, New York
Photographed by Stacia Partin, June 2000
Negatives at NYS OPRHP**



25

**Fabius Village Historic District
Onondaga County, New York
Photographed by Stacia Partin, June 2000
Negatives at NYS OPRHP**

014 035

N

ELITE PHOTO



26

**Fabius Village Historic District
Onondaga County, New York
Photographed by Stacia Partin, June 2000
Negatives at NYS OPRHP**

016 035

NYS OPRHP ELITE PHOTO



27

**Fabius Village Historic District
Onondaga County, New York
Photographed by Stacia Partin, June 2000
Negatives at NYS OPRHP**

017 035

MINI --- 16.07.00 ELITE PHOTO



28

Fabius Village Historic District
Onondaga County, New York
Photographed by Stacia Partin, June 2000
Negatives at NYS OPRHP

008 037 NNNN 16.08.00 ELITE P



29

Fabius Village Historic District
Onondaga County, New York
Photographed by Stacia Partin, June 2000
Negatives at NYS OPRHP



**Fabius Village Historic District
Onondaga County, New York
Photographed by Stacia Partin, June 2000
Negatives at NYS OPRHP**

30

250 200



**Fabius Village Historic District
Onondaga County, New York
Photographed by Stacia Partin, June 2000
Negatives at NYS OPRHP**

31



**Fabius Village Historic District
Onondaga County, New York
Photographed by Stacia Partin, June 2000
Negatives at NYS OPRHP**

32

019 635



**Fabius Village Historic District
Onondaga County, New York
Photographed by Stacia Partin, June 2000
Negatives at NYS OPRHP**

33



**Fabius Village Historic District
Onondaga County, New York
Photographed by Stacia Partin, June 2000
Negatives at NYS OPRHP**

34

022 035



**Fabius Village Historic District
Onondaga County, New York
Photographed by Stacia Partin, June 2000
Negatives at NYS OPRHP**

35

004 037



**Fabius Village Historic District
Onondaga County, New York
Photographed by Stacia Partin, June 2000
Negatives at NYS OPRHP**

36



FREE

**Fabius Village Historic District
Onondaga County, New York
Photographed by Stacia Partin, June 2000
Negatives at NYS OPRHP**

37



024 035 NNN1 --- 16.08.00 FLITE PHOTO

**Fabius Village Historic District
Onondaga County, New York
Photographed by Stacia Partin, June 2000
Negatives at NYS OPRHP**

38



**Fabius Village Historic District
Onondaga County, New York
Photographed by Stacia Partin, June 2000
Negatives at NYS OPRHP**

39



Fabius Village Historic District
Onondaga County, New York
Photographed by Stacia Partin, June 2000
Negatives at NYS OPRHP

40

001 030



**Fabius Village Historic District
Onondaga County, New York
Photographed by Stacia Partin, June 2000
Negatives at NYS OPRHP**

41



**Fabius Village Historic District
Onondaga County, New York
Photographed by Stacia Partin, June 2000
Negatives at NYS OPRHP**

42



**Fabius Village Historic District
Onondaga County, New York
Photographed by Stacia Partin, June 2000
Negatives at NYS OPRHP**

43



Fabius Village Historic District
Onondaga County, New York
Photographed by Stacia Partin, June 2000
Negatives at NYS OPRHP

44

010 037



NEW YORK STATE
DEPARTMENT OF TRANSPORTATION

DERUYTER QUADRANGLE
NEW YORK
7.5 MINUTE SERIES



*Fabius Village Historic District
Fabius, Onondaga Co. New York
De Ruyter Quad
1:24,000*

18/1 419678 4742752 ✓
2 419678 4742249 ✓
3 419456 4742230 ✓
4 419179 4742456 ✓
5 418984 4743053 ✓
6 419388 4743142 ✓
7 419595 4742833 ✓

Published by the New York State Department of Transportation, in cooperation with the U.S. Department of Transportation, Federal Highway Administration.

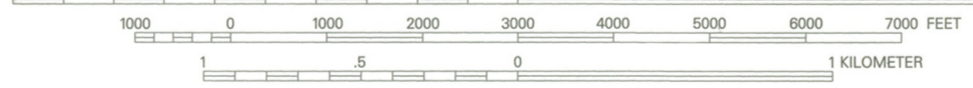
Map base from 1943 U.S. Geological Survey 7.5-minute quadrangle. Map revisions made using aerial photographs dated 1988, construction plans, official records and other sources. Features revised include: highways and other transportation facilities; civil and public land boundaries; recreation sites; hydrography; and buildings. Gray tint indicates developed areas in which only landmark buildings are shown. Darker gray tint indicates open water features. Revisions may not comply with National Map Accuracy Standards. Correspondence concerning this and other Department of Transportation maps should be directed to: Map Information Unit, New York State Department of Transportation, State Campus, Building 4, Room 105, Albany, New York 12232.

Revisions by R.J. Corvill



QUADRANGLE LOCATION

SCALE 1:24 000



Transverse Mercator projection, 1927 North American Datum
To place on the 1983 North American Datum, move the projection lines 7 meters south and 29 meters west, as shown by dashed corner ticks.

1000-meter ticks based on the New York Transverse Mercator projection /grid. Between 72° and 78° West Longitude, this projection/grid is identical to Zone 18 of the Universal Transverse Mercator projection/grid. Areas east of 72° and west of 78° are direct mathematical extensions of Zone 18. The scale of this map has been adjusted by its projection scale factor in order to maintain true 1:24,000 scale. The Transverse Mercator projection scale factor at this quadrangle location is 0.9997.

10,000-foot ticks based on the New York State Plane Coordinate System, Central Zone.

1990 magnetic declination is approximately 12.5° West

Contours, at 20-foot intervals, shown unrevised from 1943 U.S. Geological Survey map. Datum is mean sea level.

INDEX TO
1:9600 (1"=800')
MAP COVERAGE



BOUNDARIES:

State	-----
County	-----
Town or City	-----
Incorporated Village	-----
State / Federal Land	-----

ROADS:

Posted Touring Route:	-----	Divided:	-----
Interstate	(I-19)	Wide mail	-----
U.S.	(25)	Narrow mail or barrier	-----
State	(34)	Undivided:	-----
County	(4)	4 or more lanes	-----
State Highway (SH) number and limit	8020	Less than 4 lanes	-----
County road	(7)	Vehicle track; trail	-----
Interchange number	(9)		