

585

United States Department of the Interior
National Park Service

National Register of Historic Places
Registration Form

This form is for use in nominating or requesting determinations of eligibility for individual properties or districts. See instructions in *How to Complete the National Register of Historic Places Registration Form* (National Register Bulletin 16A). Complete each item by marking "x" in the appropriate box or by entering the information requested. If an item does not apply to the property being documented, enter "N/A" for "not applicable." For functions, architectural classification, materials and areas of significance, enter only categories and subcategories listed in the instructions. Place additional entries and narrative items on continuation sheets (NPS Form 10-900a). Use a typewriter, word processor, or computer, to complete all items.

1. Name of Property

historic name _____
other names/site number Silver Lake Dam

2. Location

street & number Silver Lake Road not for publication
city or town Woodridge vicinity
state New York code NY county Sullivan code 105 zip code 12789

3. State/Federal Agency Certification

As the designated authority under the National Historic Preservation Act, as amended, I certify that this nomination request for determination of eligibility meets the documentation standards for registering properties in the National Register of Historic Places and meets the procedural and professional requirements set forth in 36 CFR Part 60. In my opinion, the property meets does not meet the National Register criteria. I recommend that this property be considered significant nationally statewide locally. See continuation sheet for additional comments.

[Signature] 29 September '99
Signature of certifying official/Title Date

State or Federal agency and bureau _____

In my opinion, the property meets does not meet the National Register criteria. See continuation sheet for additional comments.

Signature of certifying official/Title Date

State or Federal agency and bureau _____

4. National Park Service Certification

I hereby certify that this property is:

- entered in the National Register. See continuation sheet.
- determined eligible for the National Register. See continuation sheet.
- determined not eligible for the National Register.
- removed from the National Register.
- other, (explain:) _____

[Signature] 6-2-00
Signature of the Keeper Date of Action

5. Classification

Ownership of Property

(Check as many boxes as apply)

- private
- public-local
- public-State
- public-Federal

Category of Property

(Check only one box)

- building(s)
- district
- site
- structure
- object

Number of Resources within Property

(Do not include previously listed resources in the count.)

Contributing	Noncontributing	
0	0	buildings
0	0	sites
1	0	structures
0	0	objects
1	0	Total

Name of related multiple property listing

(Enter "N/A" if property is not part of a multiple property listing.)

N/A

Number of contributing resources previously listed in the National Register

0

6. Function or Use

Historic Functions

(Enter categories from instructions)

INDUSTRY/PROCESSING/EXTRACTION,

waterworks

Current Functions

(Enter categories from instructions)

INDUSTRY/PROCESSING/EXTRACTION,

waterworks

7. Description

Architectural Classification

(Enter categories from instructions)

NO STYLE

Materials

(Enter categories from instructions)

foundation

walls STONE

CONCRETE

roof

other IRON

Narrative Description

(Describe the historic and current condition of the property on one or more continuation sheets.)

United States Department of the Interior
National Park Service

National Register of Historic Places
Continuation Sheet

SILVER LAKE DAM
Woodridge, Sullivan County, NY

Section number 7 Page 1

DESCRIPTION

The Silver Lake Dam is located near the headwaters of the Sandburg Creek in the Village of Woodridge, Sullivan County, New York. The Sandburg Creek is a major stream in the Rondout River watershed, which flows southeast from its origins in the mountaintops of the Town of Fallsburg, near the line between Sullivan and Ulster Counties, to Spring Glen, whence it turns abruptly northeast to empty into the Rondout River at Napanoch. The Sandburg Creek was the principal feeder of the Delaware and Hudson Canal (1828-1902) in the eight-mile stretch between its summit and Napanoch. The dam impounds an area of approximately 65 acres northwest of it, which is now known as Silver Lake. It is visible just north of Silver Lake Road, which loops northerly around Silver Lake. Both ends of the road connect with Red Hill Road, a county highway that follows the Sandburg Creek up the mountain to Woodridge from NY Route 209 at PhillipSPORT. This route up the mountain was also used by the Ontario & Western Railroad when it was built in the late nineteenth century. The rail bed was built across a southerly lobe of the lake on an earthen berm; the two parts of the lake are connected via a stone culvert. Since the closing of the canal and the beginning of summer resort development in the southern Catskills early in the twentieth century, summer homes, hotels and camp grounds have been established in Woodridge and around the lake shore. The Village of Woodridge has created a park at the northwestern end of the lake.

The Silver Lake Dam was constructed in the 1840's to store water to feed the Delaware & Hudson Canal. The canal, which opened in 1828, was enlarged in a number of winter campaigns during the 1840's to meet the demand for larger coal shipments to be carried along its route. Many improvements were made at this time, including those to the water supply system. Water to the canal's summit section, an eight-mile stretch between the Neversink Valley to the south and the Rondout Valley to the north, was supplied by the

See continuation sheet

**United States Department of the Interior
National Park Service**

**National Register of Historic Places
Continuation Sheet**

**SILVER LAKE DAM
Woodridge, Sullivan County, NY**

Section number 7 Page 2

Sandburg Creek. Thus, the Silver Lake Dam was constructed to create a much-needed reservoir for this critical area.

Like other dams erected by the canal company in this period creating similar reservoirs, the Silver Lake Dam was constructed entirely of stone with large mortared slabs encasing a dry, rubble interior. The dam is 176 feet long and approximately 5 feet wide at the top. The downstream face of the dam is vertical and rises about 13 feet above the stream bed. As built, it had a spillway 11 feet wide and 2 feet below the top of the dam, roughly centered on the structure. Two cast-iron waste pipes 15 inches in diameter were inserted through the bottom of the dam north of the spillway. They were controlled individually by gate valves operated by shafts extending vertically up the upstream side of the dam so they could be operated from the top. The upstream side of the dam is built out in this section to encase the valves and shafts.

According to a dam report issued by the New York State Conservation Commission in 1914, the dam was "repaired or reconstructed" in 1895; however, the report describes the dam essentially as it was built. Some time later, well after the canal was out of commission and the lake was dedicated to recreational use, the dam was raised and capped with concrete. At this time, the spillway was altered so that it was reduced in width and stepped up to the new elevation.

The dam remained in this condition until 1999, when a leak developed in the stone portion of the structure and silt that had built up against the dam over the years began contaminating the stream. The owner (the Village of Woodridge) was forced to make a temporary break in the dam to halt this condition, which also drained a significant portion of the lake. Plans are underway to restore the dam and the lake to their historic proportions.

See continuation sheet

8 Statement of Significance

Applicable National Register Criteria

(Mark "x" in one or more boxes for the criteria qualifying the property for National Register listing.)

- A Property is associated with events that have made a significant contribution to the broad patterns of our history.
B Property is associated with the lives of persons significant in our past.
C Property embodies the distinctive characteristics of a type, period or method of construction or represents the work of a master, or possesses high artistic values, or represents a significant and distinguishable entity whose components lack individual distinction.
D Property has yielded, or is likely to yield, information important in prehistory or history.

Criteria considerations

(mark "x" in all the boxes that apply.)

Property is:

- A owned by a religious institution or used for religious purposes.
B removed from its original location.
C a birthplace or grave.
D a cemetery.
E a reconstructed building, object or structure.
F a commemorative property.
G less than 50 years of age or achieved significance within the past 50 years.

Narrative Statement of Significance

(Explain the significance of the property on one or more continuation sheets.)

9. Major Bibliographical References

Bibliography

(cite the books, articles, and other sources used in preparing this form on one or more continuation sheets.)

Previous documentation on file (NPS):

- preliminary determination of individual listing (36 CFR 67) has been requested
previously listed in the National Register
previously determined eligible by the National Register
designated a National Historic Landmark
recorded by Historic American Buildings Survey #
recorded by Historic American Engineering Record #

Areas of Significance

(Enter categories from instructions)

ENGINEERING
TRANSPORTATION

Period of Significance

c1847-1898

Significant Dates

c1847

Significant Person

(Complete if Criterion B is marked above)

N/A

Cultural Affiliation

N/A

Architect/Builder

Rufus Lord, chief engineer

Primary location of additional data

- x State Historic Preservation Office
Other State agency
Federal agency
Local government
University
Other

Name of repository:

United States Department of the Interior
National Park Service

National Register of Historic Places
Continuation Sheet

SILVER LAKE DAM
Woodridge, Sullivan County, NY

Section number 8 Page 1

SIGNIFICANCE STATEMENT

The Silver Lake Dam is significant as distinctive surviving example of early nineteenth century water system and transportation-related engineering in Sullivan County, New York, and as a critical component of the largest private construction project of its time, the Delaware and Hudson Canal. The stone dam was constructed c1847 across the Sandburg Creek near its source and nearly seven miles upstream from the canal. Based on the steep topography of the area, this was likely the best location for an impoundment of the desired dimensions. The dam is 176 feet long and rises 13 feet above the streambed, creating a 65-acre reservoir. Construction of the D&H Canal was begun in 1825 with the principal goal of transporting anthracite coal from fields in Pennsylvania to consumers in New York. It was completed in 1825. Due to increasing demands for coal, the canal was enlarged and improved during a number of stages in the decade between 1840 and 1850. Most notable of these improvements was the construction of four suspension aqueducts designed by John Roebling; however, significant work also occurred in widening and deepening the canal, which necessitated the building of larger and more impermeable berms, rock-lined canal beds, and new cut stone locks. A larger and more reliable water-supply system was required to meet the needs of the expanded canal. The Silver Lake Dam was constructed to create a reservoir on the Sandburg Creek, which was the main source of water for a critical eight-mile section at the summit of the canal. This section fell between the waterway's two principal watersheds in New York: the Neversink, which fed the section southwest of the summit, and the Rondout, which fed the section northeast of the summit to the Hudson River. Designed by, or under the direction of, the canal company's chief engineer, Rufus Lord, the dam is constructed with a mortared, rough-dressed stone facing a dry rubble interior in a manner characteristic of water system engineering of the period. The workmanship of the dam corresponds with that of other stonework employed in the upgraded canal system. A spillway released overflow into the stream during peak times. When water levels in the canal dropped towards the end of the summer, there were two 15-inch,

See continuation sheet

**United States Department of the Interior
National Park Service**

**National Register of Historic Places
Continuation Sheet**

SILVER LAKE DAM
Woodridge, Sullivan County, NY

Section number 8 Page 2

gated pipes imbedded in the base of the dam to release stored water as needed. Retaining substantial integrity, the Silver lake Dam is especially significant in enhancing our knowledge of the history of the D & H Canal, one of the state's most important historic resources.

Completed in 1828, the Delaware and Hudson Canal was the main waterway from the anthracite coal fields of northeastern Pennsylvania to the industrial and domestic furnaces of New York. Stretching 108 miles from Honesdale, Pennsylvania, to Kingston, New York, the canal proved to be enormously profitable during the middle decades of the nineteenth century. During the 1860's, when anthracite was the main source of fuel for the industrial system of the United States, northeastern Pennsylvania produced 40 to 50 percent of the entire supply, and the Delaware and Hudson Canal carried the greater share of it to tidewater. The growth of railroads led to the demise of the canal in 1899. Currently, along the route of the canal scattered sections and structures remain intact that are significant for their associations with this early engineering feat and historic enterprise. These include sections of canal with berms and towpaths, locks, aqueducts, basins, dry docks, dams and other components of the water supply system, as well as lock keepers' and canal tenders' houses, offices, shops, mule barns, bridges and other canal-related buildings. These resources also have local significance for the influence the canal and its operation had on the growth and development of communities along its route and the continuing role they have had in the identity and history of these places since the canal's closing. The Silver Lake Dam is one such component.

The original canal, completed in 1828, was designed consistent with other nineteenth-century towpath canals. It employed a combination of independent canal channel and slack water navigation. Canal channels were planned to be 4 feet in depth, 20 feet wide at the bottom and 30 feet wide at the surface. Natural conditions caused a great variation in dimensions. The towpath was roughly ten feet wide.

See continuation sheet

United States Department of the Interior
National Park Service

National Register of Historic Places
Continuation Sheet

SILVER LAKE DAM
Woodridge, Sullivan County, NY

Section number 8 Page 3

Problems in the size and construction methods of the canal prompted plans for expansions and improvements that were more carefully engineered and implemented. In the 1840's, the company began a series of projects in response to the burgeoning demand for coal. The first project, beginning in 1842, increased the depth of the canal from four to five feet to permit the passage of boats carrying 40 tons of freight. By 1844, another project was underway to deepen the canal even more, to 5½ feet to accommodate 50-ton boats. The banks of the canal were strengthened at this time to avoid the costly breaches that plagued the original canal. A third expansion and improvement program began in 1847, during which a number of projects occurred simultaneously. Canal banks were lined with stone in sections along the Delaware and Lackawaxen Rivers; the bottom and top widths of the trough were increased to 30 and 45 feet, respectively; towpaths were widened from 10 to 15 feet; berms were improved; the canal was widened at locks to facilitate the mooring of boats waiting to enter; new boat basins were constructed. Sections of the canal were also realigned. The most significant change made during this program was the construction of the four suspension aqueducts designed by John Roebling at Lackawaxen, Narrowsburg, and High Falls. A number of reservoirs were constructed in this period. The Silver Lake Dam was erected to create one of these on the Sandburg Creek, which provided water for the summit section of the canal between Summitville and Napanoch.

With the expansion and improvement of the canal, the company prospered greatly along with the communities along its route. By 1859 over one million tons of coal were transported down the canal, nearly half of which was owned by the canal company. In the decades that followed, however, the shipment of coal followed new railroad routes to market. Even the Delaware & Hudson Canal Company transported increasing amounts of its coal by rail, at the expense of its own canal. Railroads were a much faster and more reliable means of transportation that did not have close down for the winter months or suffer the

See continuation sheet

**United States Department of the Interior
National Park Service**

**National Register of Historic Places
Continuation Sheet**

SILVER LAKE DAM
Woodridge, Sullivan County, NY

Section number 8 Page 4

breakdowns of the waterway. In 1870, the company diverted all its investments to railroads and the canal was used only as a secondary route. The canal continued to serve as the transporter of other goods and materials produced in the region and as an important link between the communities it had fostered. Nevertheless, after the company sent its last shipment of coal from Honesdale to tidewater in November 1898, it closed the canal. Six months later, a Kingston steamboat company purchased the canal and planned to operate the section between the summit and the Hudson for local products. This lasted until 1904, when the waterway ceased as a means of transportation.

The Silver Lake Dam had passed into private hands by 1914 according to a state report made on the structure in that year. At that time the impoundment was referenced as Woods Lake. Clearly the community around the dam and the lake did not experience the direct impact of the canal, but much of the lumber, tanned hides, stone, livestock and dairy products produced in the town would have found their way down the mountain along the Sandburg creek to the canal at PhillipSPORT. There local residents would have also been able to procure dry and fancy goods shipped in on the canal. As time passed, the lake became a scenic and recreational attraction for the growing resort business in and around Woodridge. A beach developed near the dam for a group of vacation colonies that appeared there, as well along the northern shoreline, which was within the built-up of the village. Today, the latter section has been incorporated into a public park maintained by the Village of Woodridge. A few private vacation homes were built on the lake; but, by-and-large, the lake shore is characterized by wooded areas. In spite of its damaged condition, the dam continues to embody the distinctive characteristics that make it a significant surviving example of mid-nineteenth century engineering in the local context and associate it more broadly with the Delaware and Hudson Canal.

See continuation sheet

United States Department of the Interior
National Park Service

National Register of Historic Places
Continuation Sheet

SILVER LAKE DAM
Woodridge, Sullivan County, NY

Section number 9 Page 1

Albany, NY. New York State Department of Environmental Conservation. Dam Reports.

Elliot, Erna W. *Centreville to Woodridge*. n.p., n.d.

Jacox, Diann L. "Delaware and Hudson Canal: Past and Present." Manuscript report written for the National Park Service, Mid-Atlantic Region. Philadelphia, December 1979.

Mcdermott, John D. "Delaware and Hudson Canal, Pennsylvania and New York." in a Special Report of The National Survey of Historic Sites and Buildings. Washington, D.C.: National Park Service, August 5, 1968.

Wakefield, Manfield B. *Coal Boats to Tidewater; The Story of the Delaware and Hudson Canal*. Grahamsville, NY: Wakefair Press, 1971.

Waterford, NY. New York State Office of Parks, Recreation and Historic Preservation, Division for Historic Preservation. Research Files on the Delaware & Hudson Canal.

See continuation sheet

Silver Lake Dam

Name of Property

Sullivan County, New York

County and State

10. Geographical Data

Acreage of property less than one acre

UTM References

(Place additional UTM references on a continuation sheet.)

1	18	537373	4616533	3			
	Zone	Easting	Northing		Zone	Easting	Northing
2				4			

See continuation sheet

Verbal Boundary Description

(Describe the boundaries of the property on a continuation sheet.)

Boundary Justification

(Explain why the boundaries were selected on a continuation sheet.)

11. Form Prepared By

name/title Neil Larson, consultant (SHPO Contact: Kathleen LaFrank, 518-237-8643)

organization Hudson Valley Heritage Field Services date August 25, 1999

street & number 315 Old Kingston Road telephone 914-255-5054

city or town New Paltz state New York zip code 12561

Additional Documentation

Submit the following items with the completed form:

Continuation Sheets

Maps

A **USGS map** (7.5 or 15 minute series) indicating the property's location.

A **Sketch map** for historic districts and properties having large acreage or numerous resources.

Photographs

Representative **black and white photographs** of the property.

Additional items

(Check with the SHPO or FPO for any additional items)

Property Owner

(Complete this item at the request of the SHPO or FPO.)

name Village of Woodridge

street & number _____ telephone _____

city or town Woodridge state NY zip code 12789

Paperwork Reduction Act Statement: This information is being collected for applications to the National Register of Historic Places to nominate properties for listing or determine eligibility for listing, to list properties and to amend existing listings. Response to this request is required to obtain a benefit in accordance with the National Historic Preservation Act, as amended (16 U.S.C.470 *et seq.*)

Estimated Burden Statement: Public reporting burden for this form is estimated to average 18.1 hours per response including time for reviewing instructions, gathering and maintaining data and completing and reviewing the form. Direct comments regarding this burden estimate or any aspect of this form to the Chief, Administrative Services Division, National Park Service, P.O. Box 37127, Washington, DC 20013-7127; and the Office of Management and Budget, Paperwork Reductions Projects (1024-0018), Washington, DC 20503.

**United States Department of the Interior
National Park Service**

**National Register of Historic Places
Continuation Sheet**

SILVER LAKE DAM
Woodridge, Sullivan County, NY

Section number 10 Page 2

Verbal Boundary Description

The nomination boundary is an arbitrary line fifty feet east and west of the center of the dam, extending from north bank to south bank. See attached map with scale.

Boundary Justification

The Silver Lake Dam exists within a larger, as yet unsurveyed parcel owned by the village of Woodridge. The dam is also a component of a larger, as yet undefined area significant for its association with the D & H Canal. The larger area includes the entire feeder lake, the outlet, the Sandburg Creek, and possibly other canal-related features in Sullivan County. Therefore, because these larger definitions of the site are unresolved, the nomination boundary is an arbitrary line drawn to encompass the entire structure of the dam, including spillway, sluice gates and other natural and built features that define its structure.

United States Department of the Interior
National Park Service

National Register of Historic Places
Continuation Sheet

SILVER LAKE DAM
Woodridge, Sullivan Co., NY

Section number _____ Page 1

ADDITIONAL DOCUMENTATION

• **Maps**

Map of Delaware & Hudson Canal

Map of Southeastern New York showing current geographical context of Delaware & Hudson Canal's Summit Section and route of Sandburg Creek

• **Photograph List**

Date of photographs: August 1999

Photographs by: Neil Larson, New Paltz, NY

Negatives stored at: Friends of Silver Lake
PO Box 1127, Woodridge, NY 12789

1. View of dam from southeast (downstream)
2. View of western side of dam wall
3. View of center section of dam showing breach
4. View of eastern side of dam showing outlets of two cast iron weir pipes
5. View across top of dam from southwest showing later concrete cap and stone housing for gate valve shafts protruding left of dam behind sluiceway
6. View northwest from dam across Silver Lake

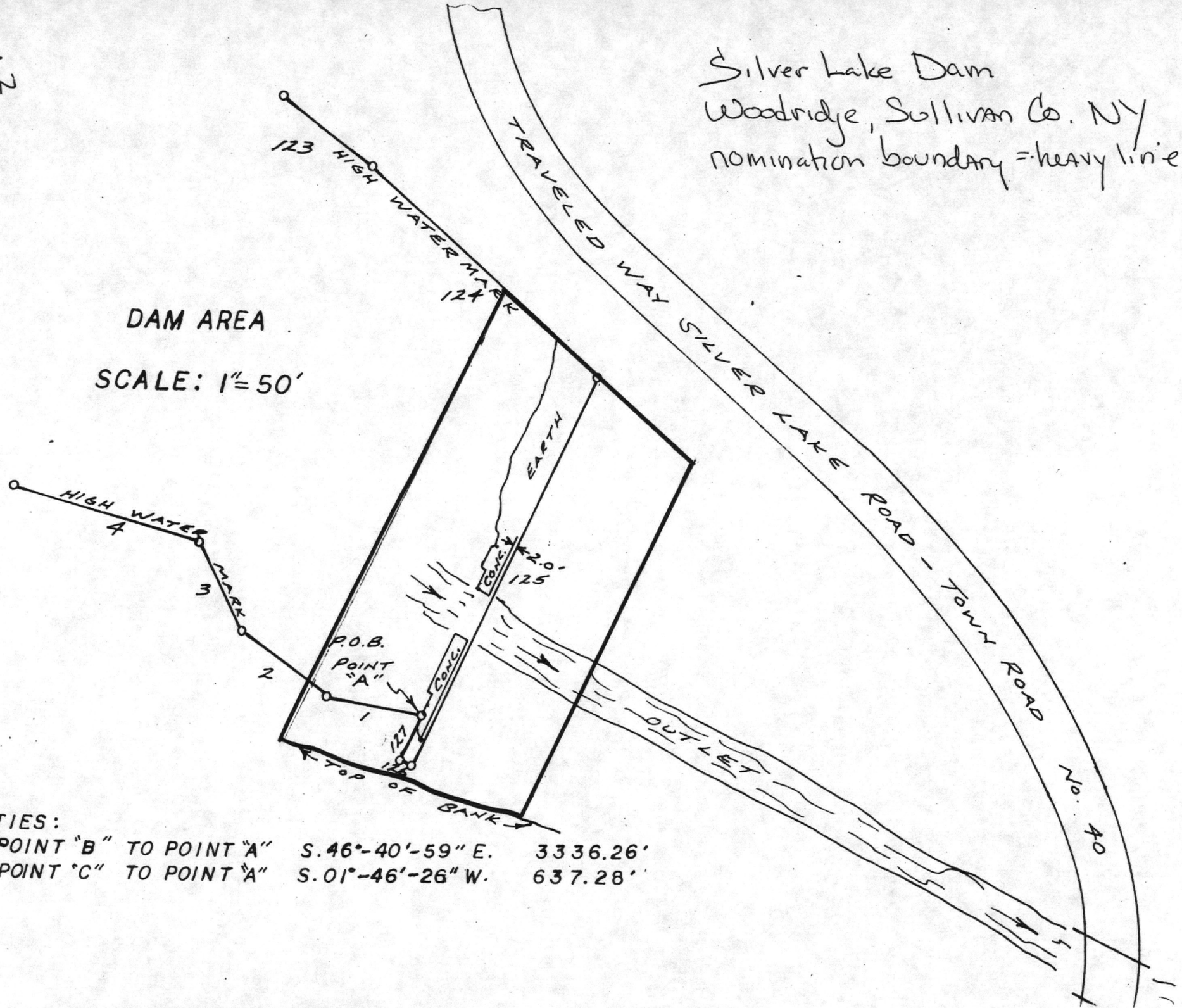
See continuation sheet



Silver Lake Dam
Woodridge, Sullivan Co. NY
nomination boundary = heavy line

DAM AREA

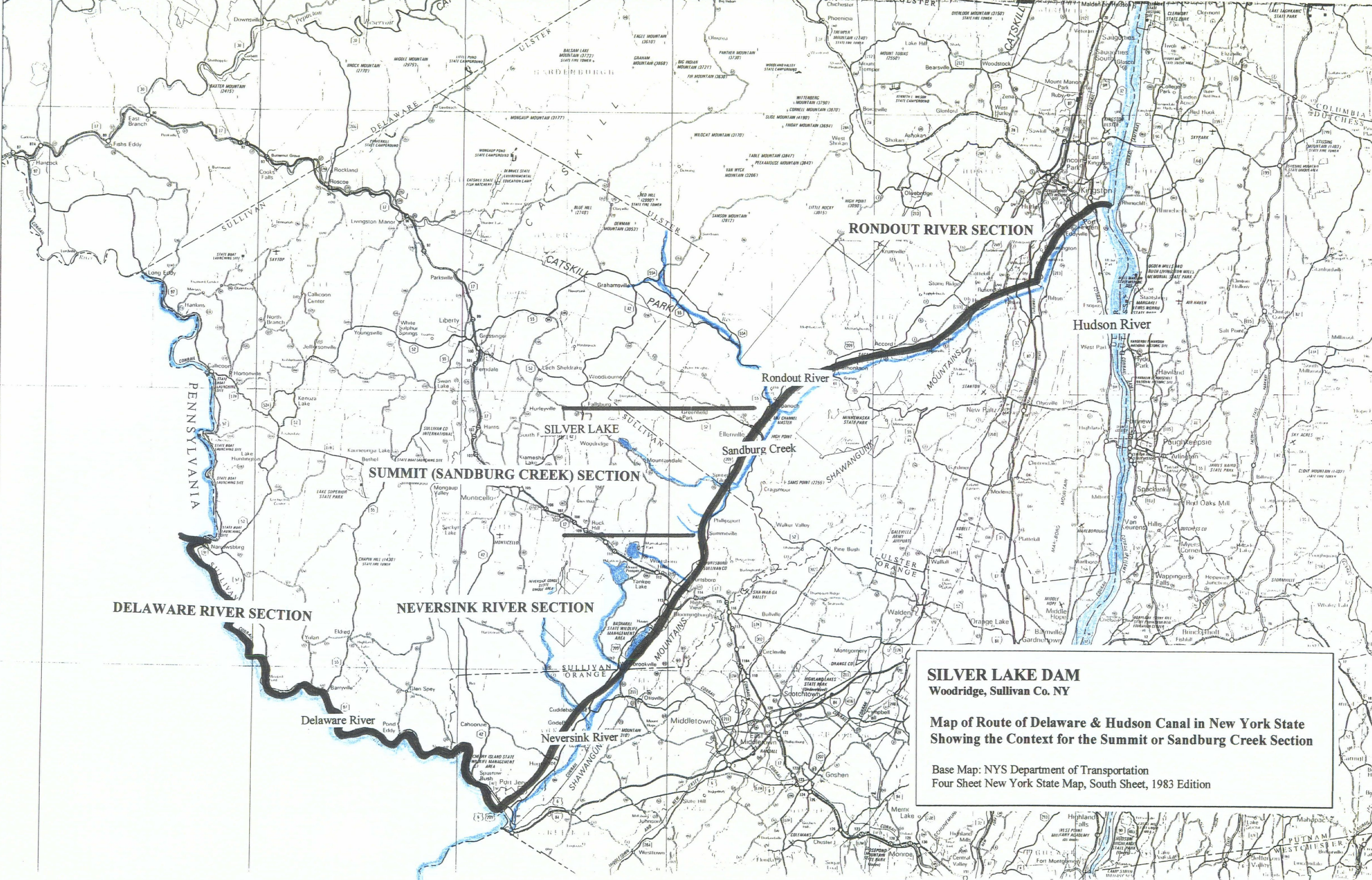
SCALE: 1" = 50'



TIES:

POINT "B" TO POINT "A" S. 46°-40'-59" E. 3336.26'

POINT "C" TO POINT "A" S. 01°-46'-26" W. 637.28'



SILVER LAKE DAM
Woodridge, Sullivan Co. NY

Map of Route of Delaware & Hudson Canal in New York State
Showing the Context for the Summit or Sandburg Creek Section

Base Map: NYS Department of Transportation
Four Sheet New York State Map, South Sheet, 1983 Edition

UNITED STATES DEPARTMENT OF THE INTERIOR
NATIONAL PARK SERVICE

NATIONAL REGISTER OF HISTORIC PLACES
EVALUATION/RETURN SHEET

REQUESTED ACTION: NOMINATION

PROPERTY Silver Lake Dam
NAME:

MULTIPLE
NAME:

STATE & COUNTY: NEW YORK, Sullivan

DATE RECEIVED: 5/02/00 DATE OF PENDING LIST: 5/17/00
DATE OF 16TH DAY: 6/02/00 DATE OF 45TH DAY: 6/16/00
DATE OF WEEKLY LIST:

REFERENCE NUMBER: 00000585

REASONS FOR REVIEW:

APPEAL: N DATA PROBLEM: N LANDSCAPE: N LESS THAN 50 YEARS: N
OTHER: N PDIL: N PERIOD: N PROGRAM UNAPPROVED: N
REQUEST: N SAMPLE: N SLR DRAFT: N NATIONAL: N

COMMENT WAIVER: N

ACCEPT RETURN REJECT 6-2-00 DATE

ABSTRACT/SUMMARY COMMENTS:

**Entered in the
National Register**

RECOM./CRITERIA _____

REVIEWER _____ DISCIPLINE _____

TELEPHONE _____ DATE _____

DOCUMENTATION see attached comments Y/N see attached SLR Y/N



SILVER LAKE DAM
Woodridge, Sullivan Co., NY

PHOTO 1

990010. 0 11081792 2512 N H-4 32



SILVER LAKE DAM

Woodridge, Sullivan Co., NY

PHOTO 2

99A(No. 1) X18:02 2012 NH-4 22



SILVER LAKE DAM

Woodridge, Sullivan Co., NY

PHOTO 3

994000.00 K121782 2500 N H-4 32



SILVER LAKE DAM
Woodridge, Sullivan Co., NY

PHOTO 4

99ACNO. 1 M03J792 2512 N144 22



SILVER LAKE DAM

Woodridge, Sullivan Co., NY

PHOTO 5

99AKNo. 00 1271792 2512 NWA 22



SILVER LAKE DAM
Woodridge, Sullivan Co., NY

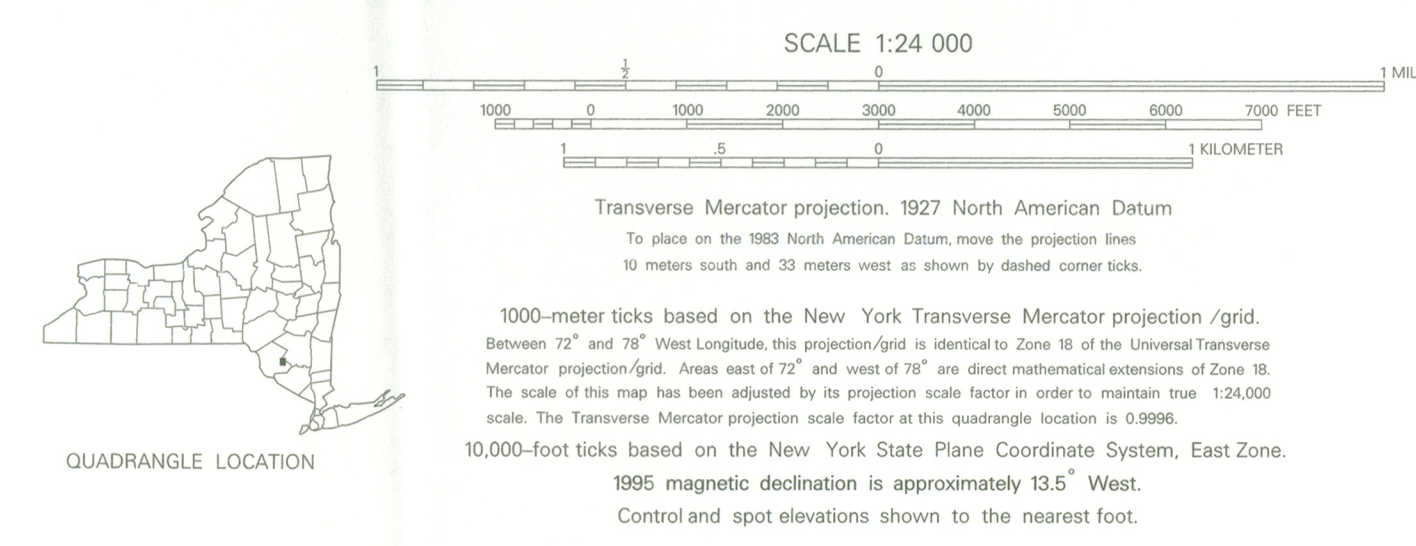
PHOTO 6

396010. @ 1231792 2512 N H 4 2 2



Silver Lake Dam
Woodridge
Sullivan Co. New York
18/537573/4616533

Published by the New York State Department of Transportation, in cooperation with the U.S. Department of Transportation, Federal Highway Administration.
Map base from 1966 U.S. Geological Survey 7.5-minute quadrangle.
Map revisions made using aerial photographs dated 1993, construction plans, official records and other sources. Features revised include: highways and other transportation facilities; civil and public land boundaries; recreation sites; hydrography; and buildings. Gray tint indicates developed areas in which only landmark buildings are shown. Darker gray tint indicates open water features.
Revisions may not comply with National Map Accuracy Standards.
Correspondence concerning this and other Department of Transportation maps should be directed to: Map Information Section, New York State Department of Transportation, State Campus, Building 4, Room 106, Albany, New York 12232-0415.
Revisions by C.E. Walp



INDEX TO 1:9600 (1"=800') MAP COVERAGE

WOODRIDGE	(1091)
-----------	--------

BOUNDARIES:
State
County
Town or City
Incorporated Village
State / Federal Land

ROADS:
Posted Touring Route:
Interstate
U.S.
State
County
State Highway (SH) number and limit
County road
Interchange number

Divided:
Wide mail
Narrow mail or barrier

Undivided:
4 or more lanes
Less than 4 lanes

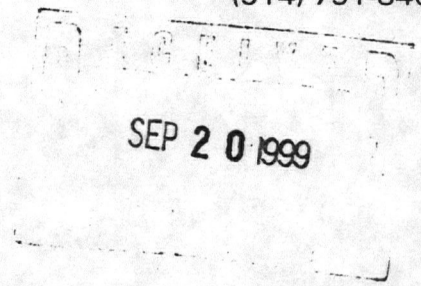
Vehicle track; trail

Contours, at 20-foot intervals, shown unrevised from 1966 U.S. Geological Survey map. Datum is mean sea level

(914) 794-3000
EXT. 5002



FAX NUMBER
(914) 791-8462



SULLIVAN COUNTY
DIVISION OF PUBLIC WORKS
100 NORTH STREET
POST OFFICE BOX 5012
MONTICELLO, NEW YORK 12701-5192

September 15, 1999

Kathleen LaFrank
Program Analyst
Field Services Bureau
NYS OPRHP
Peebles Island
P.O. Box 189
Waterford, NY 12188-0189

Re: Silver Lake dam - Woodridge, NY

Dear Ms. LaFrank:

This letter is to confirm Sullivan County support for the National Register nomination of the Silver Lake Dam, circa 1850, located in the Village of Woodridge.

We at the Division of Public Works hope you and your colleagues will look favorably at this nomination and award National Register designation to the dam.

Sincerely,

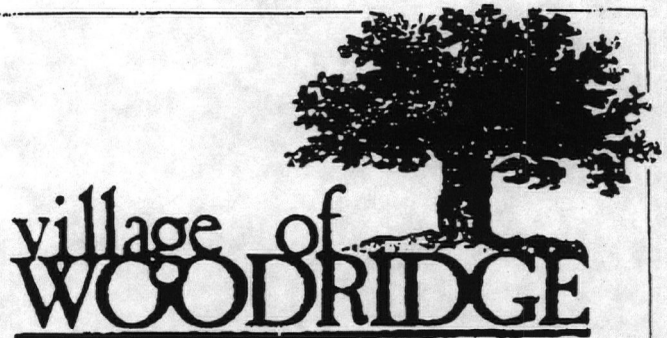
A handwritten signature in cursive script that reads "Peter Lilholt/las".

Peter Lilholt
Commissioner of Public Works

RC:ms

NAT KAGAN, Mayor
DIANE SENNETT, Clerk-Treasurer
WAYNE PIRNOS, Administrator

TRUSTEES
ARLENE MESSINA, Deputy Mayor
JOAN COLLINS
IVAN KATZ
JAMES SLATER



P.O. Box 855/Woodridge, N.Y. 12789
(914) 434-7855 or 7447
914-434-0916 (Fax)

September 16, 1999

FAX TO:

Kathleen LaFrank
PEBBLES ISLAND STATE PARK
Field Services Bureau
Waterford, New York
518-233-9049

Re: Silver Lake Dam

Dear Ms. LaFrank:

I am writing this letter to let you know of the Village's wholehearted support of the proposed nomination of Silver Lake dam for historical status. The Village of Woodridge is committed to the full restoration of this historic site. To that end, we have applied for several grants to help underwrite the cost of the restoration of this important community resource.

This dam, and the lake that it contains, has been the centerpin of our community for many, many years. We would be most proud to have this historical designation and trust our application will be looked upon favorably.

Please feel free to contact me if you have any questions.

Very truly yours,

A handwritten signature in cursive script that reads "Nat Kagan".

Nat Kagan
Mayor
VILLAGE OF WOODRIDGE

NK:ds