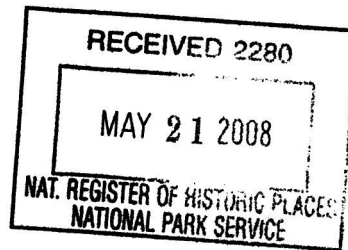


(Oct. 1990)

573



**United States Department of the Interior  
National Park Service**

**NATIONAL REGISTER OF HISTORIC PLACES  
REGISTRATION FORM**

**1. NAME OF PROPERTY**

**HISTORIC NAME:** Hillcrest Park Archway

**OTHER NAME/SITE NUMBER:**

**2. LOCATION**

**STREET & NUMBER:** Intersection of East 10<sup>th</sup> and Sycamore streets, approximately 2,757' east of intersection of 10th and Prince streets

**NOT FOR PUBLICATION:** N/A

**CITY OR TOWN:** Clovis

**VICINITY:** N/A

**STATE:** New Mexico

**CODE:** NM

**COUNTY:** Curry

**CODE:** 9

**ZIP CODE:** 88101

**3. STATE/FEDERAL AGENCY CERTIFICATION**

As the designated authority under the National Historic Preservation Act, as amended, I hereby certify that this  nomination  request for determination of eligibility meets the documentation standards for registering properties in the National Register of Historic Places and meets the procedural and professional requirements set forth in 36 CFR Part 60. In my opinion, the property  meets  does not meet the National Register criteria. I recommend that this property be considered significant  nationally  statewide  locally. (\_\_\_ See continuation sheet for additional comments.)

*Stephanie Stich*  
Signature of certifying official

*15 May 2008*  
Date

State Historic Preservation Officer

State or Federal agency and bureau

In my opinion, the property  meets  does not meet the National Register criteria. (\_\_\_ See continuation sheet for additional comments.)

Signature of commenting or other official

Date

State or Federal agency and bureau

**4. NATIONAL PARK SERVICE CERTIFICATION**

I hereby certify that this property is:

- entered in the National Register  
\_\_\_ See continuation sheet.
- determined eligible for the National Register  
\_\_\_ See continuation sheet.
- determined not eligible for the National Register
- removed from the National Register
- other (explain): \_\_\_\_\_

*Edson H. Beall*  
Signature of the Keeper

Date of Action

*7-2-08*

---

**5. CLASSIFICATION**

---

**OWNERSHIP OF PROPERTY:** Public

**CATEGORY OF PROPERTY:** Structure

<b>NUMBER OF RESOURCES WITHIN PROPERTY:</b>	<b>CONTRIBUTING</b>	<b>NONCONTRIBUTING</b>
	0	0 BUILDINGS
	0	0 SITES
	1	0 STRUCTURES
	0	0 OBJECTS
	1	0 TOTAL

**NUMBER OF CONTRIBUTING RESOURCES PREVIOUSLY LISTED IN THE NATIONAL REGISTER:** 0

**NAME OF RELATED MULTIPLE PROPERTY LISTING:** *The Historic and Architectural Resources of the New Deal in New Mexico*

---

**6. FUNCTION OR USE**

---

**HISTORIC FUNCTIONS:** Landscape: street furniture/object (park entry)

**CURRENT FUNCTIONS:** Landscape: street furniture/object (park entry)

---

**7. DESCRIPTION**

---

**ARCHITECTURAL CLASSIFICATION:** N/A

**MATERIALS:** FOUNDATION Stone  
WALLS Stone  
ROOF N/A  
OTHER N/A

**NARRATIVE DESCRIPTION** (see continuation sheets 7-5 through 7-6).

United States Department of the Interior  
National Park Service

# National Register of Historic Places Continuation Sheet

Section 7 Page 5

Hillcrest Park Archway  
Clovis, Curry County, New Mexico

---

## Description

The Hillcrest Park Archway is a monumental, freestanding set of stone arches giving vehicular and pedestrian entry to Hillcrest Park, a municipal recreation area east of downtown Clovis. The classically proportioned entry consists of three segmental arches supported by sturdy, battered piers. The height and span of the entry are impressive. Constructed in 1939-40 by the Works Progress Administration (WPA), the archway forms a grand entry to the park and exemplifies the labor-intensive construction techniques of the New Deal. One of several masonry archways constructed by the WPA in New Mexico at entries of parks and cemeteries, it exhibits few changes and retains its feeling as a New Deal public works landscaping project, especially with regard to its location, design, materials, workmanship and association.

---

## Setting

Hillcrest Park is an ample recreation area situated on former farmland east of downtown Clovis. The 160-acre park, unlike adjacent sections of strict grid-like suburban tracts and farm fields, is designed as a series of undulating terraces, curving drives, lakes and angular tree lines. It is an oasis of shade and diversion in an otherwise flat spot on the South Plains. The park's major attraction, Clovis Zoo, originated in 1930, and consists of a 22.5-acre animal exhibit. Animals, both native and exotic, are exhibited in modest enclosures or wander freely in a landscape of trees, streams, pools and other natural-like features. Beyond the zoo, the park offers picnic facilities, a golf course, sunken gardens, and basketball courts and baseball fields. In the spring, summer and fall, the park is a popular spot, attracting shade-seekers from as far away as Lubbock, Texas.

The archway, situated near the southwest corner of the park, is the primary vehicular entry to the zoo, picnic area, sunken gardens and the former pool (Photo 1). Just to the south is a deep depression in the ground creating the Clovis Sunken Gardens. It is terraced with three levels of stacked rubble stone. At the bottom is a well-kept lawn covering what was once a formal garden surrounding a wishing well. Constructed in c. 1937, it is a late example of a landscape feature made popular after the Sunken Garden of the Centennial Exposition of 1876. During its heyday, the Clovis Sunken Gardens attracted tourists traveling U.S. 60. To the southeast is the former municipal pool. Closed several years ago due to a severe leak, the 50'x120' pool was a favorite cool spot during hot months for residents and travelers alike. To the east is a parking lot for the zoo and pool. To the northeast, a pleasant grove of mature elms gives substantial shade to summer picnickers. Flanking the archway to the north is a line of specimen cedar trees planted as part of the New Deal park development.

## A massive stone archway

The Hillcrest Park Archway is a large masonry structure subdivided into three arch openings (Photo 1). The center span measures 36' between piers; the height between the ground and the intrado is approximately 16'. Buff-orange

United States Department of the Interior  
National Park Service

## National Register of Historic Places Continuation Sheet

Section 7 Page 6

Hillcrest Park Archway  
Clovis, Curry County, New Mexico

---

and towering, it is a monumental passage somewhat out of sync with its setting. The center opening is a wide segmental arch supported by heavy rock-faced piers of orange limestone (Photo 2). A piece of gray limestone, forming the voussoir, is wedged at its center. Above, orange random-coursed limestone creates a spandrel. The spandrel is topped by a thin line of gray limestone. Forming the lower part of the entablature, are large rectangular blocks of orange limestone. Painted across the center of this section is "HILLCREST PARK." A second course of thin limestone is set between this feature and the cornice above. The cornice is made of a course of white limestone incised with small squares. A simple, rounded cap completes the composition. Framing the main span are two smaller arches constructed in the same manner. Affixed to the south-center pier is a brass plaque fabricated in 1935 denoting the WPA's involvement in constructing the park (Photo 3).

The Hillcrest Park Archway exhibits a number of common stone masonry techniques. The stones creating the heavy piers are laid in random courses and finished with a rock-faced dressing (Photo 4). This technique leaves the stone face essentially in its quarried condition, with no additional finish. The quoins and the thin courses of white limestone are finished with a brush hammered facing, a technique using a hammer with several rows of pyramidal points to create a stippled texture (Photo 4). The remaining stones along the arches and entablature were worked by hand to achieve a smooth finish.

The archway remains a defining element of the park, marking the formal entry to the park. Unaltered and in good condition, the archway offers an excellent example of the labor-intensive techniques used by the WPA. Given the nearly 70 years of use, the archway and its stonework are in remarkable shape, maintaining their integrity of location, design, materials, workmanship, setting, feeling and association.

---

**8. STATEMENT OF SIGNIFICANCE**

---

**APPLICABLE NATIONAL REGISTER CRITERIA**

- A** PROPERTY IS ASSOCIATED WITH EVENTS THAT HAVE MADE A SIGNIFICANT CONTRIBUTION TO THE BROAD PATTERNS OF OUR HISTORY.
- B** PROPERTY IS ASSOCIATED WITH THE LIVES OF PERSONS SIGNIFICANT IN OUR PAST.
- C** PROPERTY EMBODIES THE DISTINCTIVE CHARACTERISTICS OF A TYPE, PERIOD, OR METHOD OF CONSTRUCTION OR REPRESENTS THE WORK OF A MASTER, OR POSSESSES HIGH ARTISTIC VALUE, OR REPRESENTS A SIGNIFICANT AND DISTINGUISHABLE ENTITY WHOSE COMPONENTS LACK INDIVIDUAL DISTINCTION.
- D** PROPERTY HAS YIELDED, OR IS LIKELY TO YIELD, INFORMATION IMPORTANT IN PREHISTORY OR HISTORY.

**CRITERIA CONSIDERATIONS:** N/A

**AREAS OF SIGNIFICANCE:** Landscape Architecture; Social History

**PERIOD OF SIGNIFICANCE:** 1939-1940

**SIGNIFICANT DATES:** 1939; 1940

**SIGNIFICANT PERSON:** N/A

**CULTURAL AFFILIATION:** N/A

**ARCHITECT/BUILDER:** Works Progress Administration (WPA)

**NARRATIVE STATEMENT OF SIGNIFICANCE** (see continuation sheets 8-7 through 8-11).

---

**9. MAJOR BIBLIOGRAPHIC REFERENCES**

---

**BIBLIOGRAPHY** (see continuation sheet 9-12).

**PREVIOUS DOCUMENTATION ON FILE (NPS):** N/A

- preliminary determination of individual listing (36 CFR 67) has been requested.
- previously listed in the National Register
- previously determined eligible by the National Register
- designated a National Historic Landmark
- recorded by Historic American Buildings Survey #
- recorded by Historic American Engineering Record #

**PRIMARY LOCATION OF ADDITIONAL DATA:**

- State historic preservation office (*Historic Preservation Division, Office of Cultural Affairs*)
- Other state agency
- Federal agency
- Local government
- University
- Other -- Specify Repository:

United States Department of the Interior  
National Park Service

# National Register of Historic Places Continuation Sheet

Section 8 Page 7

Hillcrest Park Archway  
Clovis, Curry County, New Mexico

---

## Significance of Property

Constructed in 1939-40, as part of an ambitious project to develop a 160-acre recreation area, the Hillcrest Park Archway signifies the New Deal's central role in developing the park and promoting recreation in Clovis and Curry County. Completed under two WPA projects, the federal government pumped thousands of dollars into park development. As one strongest visual reminders of the WPA's involvement in park construction, the archway is eligible for the National Register of Historic Places under Criterion A, meeting the criteria established in *The Historic and Architectural Resources of the New Deal in New Mexico* Multiple Property Documentation Form. A notable local example of landscape architecture, the Hillcrest Park Archway is additionally eligible under Criterion C.

---

## Two coyotes, a wolf and two armadillos

*"The price was the same for everyone, the rich or the poor. It cost nothing to experience adventure, excitement, relaxation and some real fun as a person entered through the archway at Hillcrest Park... If you had troubles and worries when you entered, you soon forgot them."*<sup>1</sup>

Almost every town has its park, but few a zoo. Founded in 1906, Clovis, a railroad division point and an agricultural and commercial trade center, supported a city park as early as 1909. Cavender Park, named for its donor, T.B. Cavender, was situated on a 1.5-block parcel in the downtown commercial area.<sup>2</sup> The high school used it for practice and to host sporting events.<sup>3</sup> In contrast to other towns of its size, Clovis organized a zoo early in its history, albeit in a haphazard fashion.

Several stories, differing in fact, establish the origin of Clovis's first zoo. One holds that the zoo began almost as an accident in 1931 when a traveling circus went bankrupt, leaving its animals and cages in Hereford, Texas.<sup>4</sup> James G. Witherspoon, a Hereford lawyer representing a California man who sued the circus for debt, received the animals and cages as payment. Finding that it took "a horse a day to feed them," the lawyer offered the animals to Amarillo. Finding no interest in Amarillo, Witherspoon then offered the collection to Clovis, starting the town's first zoo. A second story claims the zoo came about in the late 1920s when Clovis city manager R.V. Miller started to display his "two coyotes, a wolf and two armadillos."<sup>5</sup> The collection expanded when a trapper

---

<sup>1</sup> Ellison Green, "A Walk in the Park." Ellison was the son of former park superintendent, Ellis Green, who took over the position in 1952. Ellison captured his memories growing up in the park in this unpublished document.

<sup>2</sup> This park was located on the block where the First Presbyterian Church now stands. Don McAlavy, personal communication. March 15, 2007.

<sup>3</sup> Ibid. Harold O. Gore related this story to Don McAlavy in 1978.

<sup>4</sup> "Hillcrest Zoo History Reviewed." December 2, 1979: n. pag.; Paul Timmons, "The Surveyor." *Amarillo Daily News*. June 13, 1963: n. pag. Both articles are contradictory in terms of the origin of Clovis's first zoo.

<sup>5</sup> Belle Kilgore, "Hill Crest Park and Zoo." Typed manuscript, March 12, 1937: 1.

United States Department of the Interior  
National Park Service

# National Register of Historic Places Continuation Sheet

Section 8 Page 8

Hillcrest Park Archway  
Clovis, Curry County, New Mexico

---

brought Miller eight baby coyotes, which were bred with a cur dog. With the litter of dog-coyotes, Miller transferred his exhibit creatures to a city-owned block at Fourth and Mitchell streets, creating Clovis's first zoo.

In February 1928, the nascent zoo got a boost from the city with the appointment of a park commission, including within its membership future New Mexico governor, A.W. Hockenull. The exhibit expanded its collection as citizens donated animals, including various native species—trapped bobcats, wolves, deer, a mountain lion—and a comparatively exotic herd of African sheep and a collection of monkeys. One donated animal, a ring-tail cat captured in Hereford, was characterized by Miller as “very similar to the Panda of the Himalayas.”<sup>6</sup> The zoo soon emerged as one of the city's major attractions, drawing people throughout the region to view the strange menagerie of creatures. The various “growls, screeches, barks, cackles, squawks and wails,” created, as one newspaper reported, a “rhapsody about as harmonious as a first class jazz orchestra.”<sup>7</sup>

The downtown zoo did not last long. In October 1929, the city sold the land holding the zoo to the U.S. Treasury Department to construct a new post office. There were efforts to keep the city from closing the zoo, but the citizens of Clovis eventually voted to sell the land.<sup>8</sup> With the \$17,000 collected from the sale, taxpayers successfully petitioned to build a new park and zoo. Eight months later the Clovis City Park Board purchased the Rice farm in the Kentucky Heights Subdivision east of downtown for \$8,000 for the purpose of developing a permanent park. Rather than demolishing the existing farm structures, the city refurbished a windmill, adding a 130,000-gallon storage tank for use in park construction, and took Rice's seven-room house and remodeled it for use as a community center and rebuilt the garage to become a residence for the park superintendent and his family.

## A park built by the people

Construction of a new park began August 21, 1930. The initial plan called for a 10-acre zoo and a nine-hole golf course. Entering a nationwide depression, city officials cautioned that work would be “handicapped somewhat due to financial resources,” and turned to inmate labor to build much of the zoo.<sup>9</sup> Concrete salvaged from the city's sidewalks and curbs was used to erect walls and enclosures. A municipal golf association formed to offset the cost of developing the golf course; members of the Lions and Kiwanis clubs raised money to buy trees; staff of the New Mexico Agricultural College created a design for the terraces; and on March 17, 1931, a mass of adults and school children descended on the park, planting over the ensuing months, hundreds of trees, shrubs and flowerbeds and constructing water fountains, benches and a playground.<sup>10</sup> The zoo opened in 1931 with 70 exhibit animals. Most were domesticated creatures of the prairie, but the exhibit boasted a pair of lions, a lone anteater and a few alligators.

---

<sup>6</sup> Ibid, 3.

<sup>7</sup> August 21, 1928 newspaper article quoted in F. Stanley, *The Clovis, New Mexico Story*. Pampa, Tex, 1966: 51.

<sup>8</sup> Belle Kilgore, “Hill Crest Park and Zoo.” Typed manuscript, March 12, 1937: 6.

<sup>9</sup> August 22, 1930 newspaper article quoted in F. Stanley, *The Clovis, New Mexico Story*. Pampa, Tex, 1966: 58.

<sup>10</sup> Various newspaper articles quoted in F. Stanley, *The Clovis, New Mexico Story*. Pampa, Tex, 1966: 54; Belle Kilgore, “Hill Crest Park and Zoo.” Typed manuscript, March 12, 1937: 6-7.

United States Department of the Interior  
National Park Service

## National Register of Historic Places Continuation Sheet

Section 8 Page 9

Hillcrest Park Archway  
Clovis, Curry County, New Mexico

---

Further park development foundered until 1933, when Leslie J. Stone became mayor. During his three two-year terms (1933, 1937 and 1940), Stone worked tirelessly to bring federal aid to Clovis, including funding to complete the park. Leslie J. Stone (1894-1951) started his career in 1911 on the railroad, running a helper engine pushing trains over the long hill east of Vaughn. A strong union supporter, Stone got interested in civic affairs, and was elected to the city commission. Stone envisioned “a beautiful park, with a zoo and swimming pool in the arid country east of town.”<sup>11</sup> During his three terms, Mayor Stone personally drew up plans for the park, which he submitted three times to the WPA for financing.

### **The federal government lends a hand**

Federal aid to complete Hillcrest Park came at a time when the United States entered a new era of park planning. Prior to the 1900s, public parks, as designed by Frederick Law Olmsted and others, were not created for promoting recreation, but for approximating an experience of nature. With the emergence of the recreational movement in the 1920s—and especially the federal application of the philosophy—municipal parks were redesigned toward fulfilling a recreational function.

With the National Recovery Act’s shift to a 40-hour week, changes in child labor laws and vast unemployment, millions of Americans found themselves with increased leisure. The problem of the “new leisure” emerged as a central focus of social reformers and public policy advocates who warned against the dangers of unstructured free time. William G. Vinal, a nationally-renowned promoter of “nature recreation” cautioned: “We have been caught unprepared for the amount of leisure that has been thrust upon us.”<sup>12</sup> A fear that adults and children would fall prey to unwholesome activities led recreation planners to champion the construction of multi-use city parks, playgrounds, pools and organized camp facilities to channel unstructured leisure hours.

The federal government’s involvement in park construction in New Mexico varied depending on a community’s resources and its expectations for recreational development. Communities such as Carlsbad, Clovis, Aztec and Roswell, which already had municipal parks in development benefited greatly from the infusion of federal dollars, allowing a more diversified recreational experience—often including pools, ball fields and playgrounds—which would not have been possible through local funding. In other communities the WPA involvement was more limited and concentrated on the development of smaller, less recreationally diverse parks. In total, the various New Deal agencies constructed or improved over 30 parks in New Mexico, expanding the state’s leisure and recreational opportunities and enhancing community life.

After considerable delay, Mayor Stone secured in September 1935 a small WPA project to improve the golf course. Work began in September, with 20 men building a reservoir and irrigation canals, installing sod,

---

<sup>11</sup> Don McAlavy, “The Old Swimming Pool in Hillcrest Park in Clovis.” Unpublished essay.

<sup>12</sup> William G. Vinal, “Today’s Nature Education and Tomorrow’s Leisure.” *Recreation*. April 1938:18.

United States Department of the Interior  
National Park Service

# National Register of Historic Places Continuation Sheet

Section 8 Page 10

Hillcrest Park Archway  
Clovis, Curry County, New Mexico

repairing roads, constructing a lagoon and an athletic field; the project lasted approximately two months.<sup>13</sup> Mayor Stone would have to wait another four years before additional federal was released for park development.<sup>14</sup> In the meantime, work on a \$20,000, non-WPA financed swimming pool finished on May 26, 1937, as water from the old Rice well gushed into the pool.<sup>15</sup> *Mayor Stone opened the pool the following day with the Clovis High School brightening the ceremony. It is unclear what role the WPA played in developing the pool and the nearby sunken gardens. Neither newspaper coverage nor WPA project reports mention these features as part of a WPA-sponsored project. For many years the Hillcrest Park pool was segregated, with a separate facility, Potter Pool, at the opposite end of town constructed for African-Americans and Hispanics*

But more was needed to complete the park. As the Clovis newspaper commented, "City officials look upon the park as their 'baby,' and every opportunity which presents itself to better it in some way or another, is fairly leaped upon by them."<sup>16</sup> A second and final infusion of federal aid came in late 1939 with a WPA project completing the nearly 10-year park project. The 23-item project made improvements throughout the park, installing or completing landscaping, tennis courts, a nine-hole golf course, a playground, picnic grounds, a target range, toilets, an adobe barn, fountains, gardens, irrigation, a canal, masonry walls, trees, animal pens, and the stone archway. To complete the project, the WPA allocated \$32,488.00, and the sponsor, the City of Clovis, \$3,880.00, for a total of \$41,368.00.<sup>17</sup>

Work on the archway began May 22, 1939. To build the entry, the sponsor supplied a truck and an air compressor; the WPA hand tools and payment for labor. The project employed several men, including a stonemason, a truck driver and a varying number of laborers. An April 26, 1940 WPA inspection report noted eight men were working on the "decorative entrance to the park." Two months later, another inspection report made note of trouble between the project foreman, Frank Wallace, and the federal timekeeper, Sam Dorris Jr. who was categorized as "very aggressive." The trouble apparently started with Dorris's desire to raise the pay of a man cleaning stone to that of a stonecutter.<sup>18</sup> The report also stated that Dorris inappropriately recorded the time the men spent commuting in the sponsor's truck to a quarry located 45 miles away. To solve the minor labor problem, the report's author recommended that in the future the men be transported to a "newly located quarry" in a WPA truck, and that Dorris be transferred to a "city streets" project and "replaced with another

<sup>13</sup> The park received its name in 1935 as part of a contest during the first Pioneer Days in Clovis celebration. Of the 115 submitted names, "Hillcrest" came to the top and replaced the more mundane Clovis Municipal Park. Don McAlavy, *Clovis Remembered: Moments from the Past*. Clovis, The High Plains Historical Press, 1976: 52.

<sup>14</sup> "Long Delayed WPA to Get Under Way". *Clovis Evening News-Journal*. September 21, 1935: 1. Between 1935 and 1941 the WPA funded approximately 61 projects in Clovis. These projects ranged from sponsoring sewing rooms, to building roads, and establishing a work camp for transients. Notable buildings constructed or assisted with New Deal monies include the Curry County Courthouse, Municipal Hospital, the National Guard Armory, and a municipal auditorium.

<sup>15</sup> The WPA apparently played no role in constructing the pool or the sunken gardens.

<sup>16</sup> "New Park City's Recreation Center." *Clovis Evening News-Journal*. May 31, 1937, n, pag.

<sup>17</sup> Works Progress Administration. Project Proposal 665-85-2-248.

<sup>18</sup> *Ibid.*

United States Department of the Interior  
National Park Service

# National Register of Historic Places Continuation Sheet

Section 8 Page 11

Hillcrest Park Archway  
Clovis, Curry County, New Mexico

man.”<sup>19</sup> The final inspection report, dated June 12, 1940, reported the “foreman is performing a difficult, although excellent and very unusual, job at this entrance.” Taking over a year to complete, the archway cost \$518.50 to construct, including \$129.37 in materials and \$347.50 in labor and additional expenses.<sup>20</sup>

## An oasis east of town

Hillcrest Park offered not only the zoo, but a modern golf course, the swimming pool, a wading pool, the sunken gardens, tennis courts, baseball fields, and a lake stocked for fishing.<sup>21</sup> The 1940 Federal Writers’ Program guide to New Mexico highlighted the park as Clovis’s only tourist attraction. The park featured prominently in Clovis promotional materials and tourist literature well into the 1950s, and until the formation of the Amarillo Zoo in 1955, the Hillcrest Zoo was the only large animal exhibit in the Eastern New Mexico-Texas Panhandle region.

Over the years the park has evolved, responding to changes in recreational programming. Following these trends, basketball courts and expanded baseball fields have replaced rifle and pistol ranges and the lake stocked with bass. While much has changed, the improvements made by local citizens and the WPA continue to influence a visitor’s experience.<sup>22</sup> The archway, as the most visible feature and the historic entrance to the park, is a strong reminder of the role the federal government played in completing this town’s vision of an oasis in eastern New Mexico.

---

<sup>19</sup> Ibid.

<sup>20</sup> Ibid.

<sup>21</sup> Federal Writers’ Program, *New Mexico: A Guide to the Colorful State*. New York: Hastings House, 1940: 369-370.

<sup>22</sup> Most of the improvements the WPA made to the park and zoo have been removed. The archway and approximately 2,100’ feet of stone masonry wall are the only structures remaining. Most of the New Deal designed landscape, however, survives.

United States Department of the Interior  
National Park Service

## National Register of Historic Places Continuation Sheet

Section 9 Page 12

Hillcrest Park Archway  
Clovis, Curry County, New Mexico

---

### Bibliography

- “\$41,995 in New WPA Projects for Curry County.” *Clovis News-Journal*, March 25, 1938: 1.
- Federal Writers’ Program, *New Mexico: A Guide to the Colorful State*. New York: Hastings House, 1940.
- Green, Ellison. “A Walk in the Park.” Undated typed manuscript in possession of Don McAlavy, St. Petersburg, Florida.
- “Hillcrest Zoo History Reviewed.” *Clovis News-Journal*. December 2, 1979: n. pag.
- Kammer, David. *The Historic and Architectural Resources of the New Deal in New Mexico*. Multiple Property Documentation Form prepared for the Historic Preservation Division, 1994.
- Kilgore, Belle. “Hill Crest Park and Zoo.” Typed Manuscript, March 12, 1937. Works Progress Administration collection, Exp. #20, File #193, New Mexico State Records and Archives, Santa Fe.
- “Long Delayed WPA to Get Under Way.” *Clovis News-Journal*. September 21, 1935: 1.
- McAlavy, Don. *Clovis Remembered: Moments from the Past*. Clovis, The High Plains Historical Press, 1976.
- \_\_\_\_\_. “The Old Swimming Pool in Hillcrest Park in Clovis.” Unpublished essay in possession of Don McAlavy, St. Petersburg, Florida.
- “Mayor Stone Tells of Improvements Under WPA.” *Clovis News-Journal*. March 9, 1938: 1.
- “New Park City’s Recreation Center.” *Clovis Evening News-Journal*. May 31, 1937. n. pag.
- Stanley, F. *The Clovis, New Mexico Story*. Pampa, Tex, 1966.
- Steiner, Jesse F. “Challenge of the New Leisure.” *Recreation*. November 1933: 517-522+.
- Timmons, Paul. “The Surveyor.” *Amarillo Daily News*. June 13, 1963: n. pag.
- Vinal, William G. “Today’s Nature Education and Tomorrow’s Leisure.” *Recreation*. April 1938: 17-19+.
- Weir, L.H., editor. *Parks: A Manual of Municipal and County Parks*. New York, A.S. Barnes and Company, 1928.
- Works Progress Administration. Project Proposal 665-85-2-248.

---

**10. GEOGRAPHICAL DATA**

---

**ACREAGE OF PROPERTY:** less than one acre

**UTM REFERENCES**    Zone Easting    Northing  
                          1 13    666572    3808869

**VERBAL BOUNDARY DESCRIPTION**

The nominated property is approximately 65' in length, north to south, and 20' wide, east to west, and is located along the western edge of the NW ¼, SW ¼, SE ¼ Section 8, Township 2N, Range 36E as depicted on the accompanying *Clovis, New Mexico*, USGS quadrangle map.

**BOUNDARY JUSTIFICATION** The boundary includes the entire structure built by the Works Progress Administration and its immediate setting.

---

**11. FORM PREPARED BY**

---

**NAME/TITLE:** John Murphey

**ORGANIZATION:** New Mexico Historic Preservation Division

**DATE:** March 2008

**STREET & NUMBER:** 407 Galisteo, Suite 236

**TELEPHONE:** 505-827-0397

**CITY OR TOWN:** Santa Fe

**STATE:** NM

**ZIP CODE:** 87501

---

**ADDITIONAL DOCUMENTATION**

---

**CONTINUATION SHEETS**

**MAPS** (see enclosed *Clovis, New Mexico*, USGS quadrangle map)

**PHOTOGRAPHS** (see continuation sheet Photo-13)

**ADDITIONAL ITEMS** N/A

---

**PROPERTY OWNER**

---

**NAME:** City of Clovis Parks and Recreation

**STREET & NUMBER:** 500 Sycamore Street

**TELEPHONE:** 575-769-7870

**CITY OR TOWN:** Clovis      **STATE:** NM

**ZIP CODE:** 88101

**United States Department of the Interior**  
National Park Service

# National Register of Historic Places Continuation Sheet

Section Photo Page 13

Hillcrest Park Archway  
Clovis, Curry County, New Mexico

---

## Photo Log

*The following information pertains to all photographs unless otherwise noted:*

### **Hillcrest Park Archway**

Clovis, Curry County, New Mexico

Photographer: John Murphey

Photographs taken: April 2006

Negatives on file with the Historic Preservation Division

Photo 1 of 4

Park Entry Arch

Camera facing northeast

Photo 2 of 4

Piers

Camera facing northeast

Photo 3 of 4

WPA plaque

Camera facing east

Photo 4 of 4

Various stone facing techniques

Camera facing northeast

UNITED STATES DEPARTMENT OF THE INTERIOR  
NATIONAL PARK SERVICE

NATIONAL REGISTER OF HISTORIC PLACES  
EVALUATION/RETURN SHEET

REQUESTED ACTION: NOMINATION

PROPERTY Hillcrest Park Archway  
NAME:

MULTIPLE *New Deal in New Mexico MPS*  
NAME:

STATE & COUNTY: NEW MEXICO, Curry

DATE RECEIVED: 5/21/08 DATE OF PENDING LIST: 6/09/08  
DATE OF 16TH DAY: 6/24/08 DATE OF 45TH DAY: 7/04/08  
DATE OF WEEKLY LIST:

REFERENCE NUMBER: 08000573

REASONS FOR REVIEW:

APPEAL: N DATA PROBLEM: N LANDSCAPE: N LESS THAN 50 YEARS: N  
OTHER: N PDIL: N PERIOD: N PROGRAM UNAPPROVED: N  
REQUEST: N SAMPLE: N SLR DRAFT: N NATIONAL: N

COMMENT WAIVER: N

ACCEPT  RETURN  REJECT 7-2-08 DATE

ABSTRACT/SUMMARY COMMENTS:

~~DATE RECEIVED: 5/21/08 DATE OF PENDING LIST: 6/09/08~~

Entered in  
the National Register  
of  
Historic Places

~~APPEAL: N DATA PROBLEM: N LANDSCAPE: N LESS THAN 50 YEARS: N~~

RECOM./CRITERIA \_\_\_\_\_

REVIEWER \_\_\_\_\_ DISCIPLINE \_\_\_\_\_

TELEPHONE \_\_\_\_\_ DATE \_\_\_\_\_

DOCUMENTATION see attached comments Y/N see attached SLR Y/N

If a nomination is returned to the nominating authority, the nomination is no longer under consideration by the NPS.

# HILLCREST PARK

NOTICE  
HILLCREST PARK IS CLOSED  
TO THE PUBLIC  
AT 10:00 P.M. DAILY  
NO ADULTS OR CHILDREN  
TO BE ADMITTED



S010NR 100237 P993

Hillcrest Park Archway  
Clouis, Curry County, NM  
Photo 1 of 4

PARKING  
TO THE PUBLIC  
AT 11:00 P.M. DAILY  
ALL DOGS MUST  
BE ON LEASH

General  
Manager of  
City of Dallas  
Dallas  
City Parks Administration  
1935



8009 + 1 100193 P091

Hillcrest Park Archway  
Clovis, Curry County, NM  
Photo 2 of 4

HILLOREST PARK  
SPONSORED BY  
CITY OF CLOVIS  
IMPROVED BY  
WORKS PROGRESS ADMINISTRATION  
1935

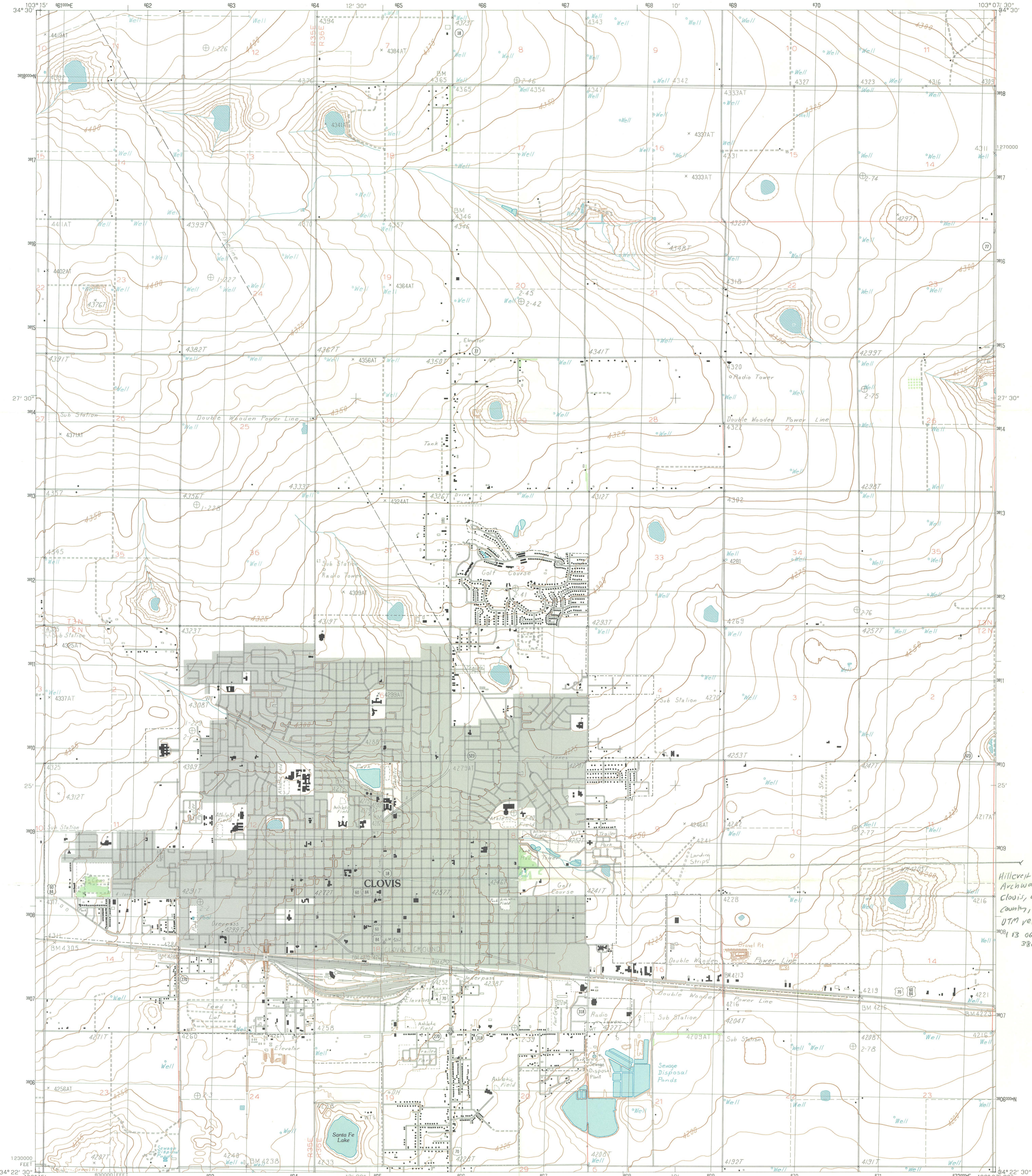
S010NR 100322 P92

Hillcrest Park Archway  
Clouis, Curry County, NM  
Photo 3 of 4



S009 +1 T00161 P1+9

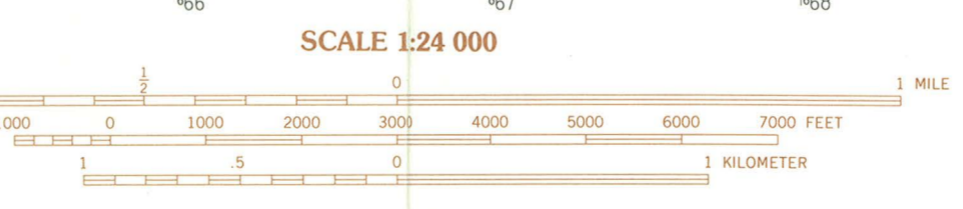
Hillcrest Park Archway  
Clouis, Curry County, NM  
Photo 4 of 4.



Hillcrest Park  
Archway  
Clovis, Curry  
County, NM  
UTM reference:  
3808113 066572E  
3808869N

PRODUCED BY THE UNITED STATES GEOLOGICAL SURVEY  
CONTROL BY USGS, NOS/NOAA  
COMPILED FROM AERIAL PHOTOGRAPHS TAKEN 1979  
FIELD CHECKED 1980 MAP EDITED 1985  
PROJECTION TRANSVERSE MERCATOR  
GRID 1000-METER UNIVERSAL TRANSVERSE MERCATOR  
ZONE 13  
10,000-FOOT STATE GRID TICKS NEW MEXICO, EAST ZONE  
UTM GRID DECLINATION 1902 EAST  
1985 MAGNETIC NORTH DECLINATION 10' EAST  
VERTICAL DATUM NATIONAL GEODETIC VERTICAL DATUM OF 1929  
HORIZONTAL DATUM 1927 NORTH AMERICAN DATUM  
To place on the predicted North American Datum of 1983, move  
the projection lines as shown by dashed corner ticks  
(4 meters south and 64 meters east)  
There may be private inholdings within the boundaries of any  
Federal and State Reservations shown on this map  
Gray tint indicates area in which selected buildings are shown

**PROVISIONAL MAP**  
Produced from original  
manuscript drawings. Infor-  
mation shown as of date of  
field check.



SCALE 1:24 000  
CONTOUR INTERVAL 5 FEET

QUADRANGLE LOCATION

1	2	3
4	5	6
7	8	

ADJOINING 7.5 QUADRANGLE NAMES

**ROAD LEGEND**  
Improved Road  
Unimproved Road  
Trail  
Interstate Route U.S. Route State Route

**CLOVIS, NEW MEXICO**  
PROVISIONAL EDITION 1985

34103-D2-TF-024



THIS MAP COMPLIES WITH NATIONAL MAP ACCURACY STANDARDS  
FOR SALE BY U.S. GEOLOGICAL SURVEY, DENVER, COLORADO 80225  
OR RESTON, VIRGINIA 22092



STATE OF NEW MEXICO  
**DEPARTMENT OF CULTURAL AFFAIRS**  
**HISTORIC PRESERVATION DIVISION**

**BILL RICHARDSON**  
Governor

BATAAN MEMORIAL BUILDING  
407 GALISTEO STREET, SUITE 236  
SANTA FE, NEW MEXICO 87501  
PHONE (505) 827-6320 FAX (505) 827-6338



May 9, 2008

Paul R. Lusignan, Historian  
United States Department of the Interior  
National Park Service  
National Register of Historic Places  
1201 Eye Street, N.W. 8th floor  
Washington D.C. 20005

Re: Hillcrest Park Archway, Clovis, Curry County, New Mexico


Dear Mr. Lusignan:

Please find enclosed a nomination for the Hillcrest Park Archway.

The New Mexico Cultural Properties Review Committee (CPRC) voted unanimously at their April 4, 2008 meeting to nominate the structure and forward it to the Keeper for consideration for listing in the National Register of Historic Places. The structure is nominated under the *Historic and Architectural Resources of the New Deal in New Mexico* Multiple Property Documentation Form.

Thank you for your assistance, and please call me if you have any questions or need more information.

Sincerely,

  
John W. Murphey  
Architectural Historian

Enclosure: one National Register nomination