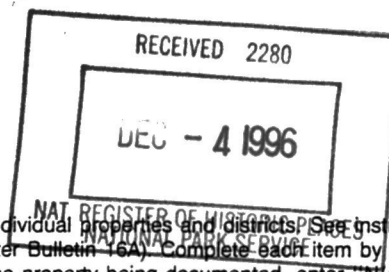


96-1548

United States Department of the Interior
National Park Service

National Register of Historic Places
Registration Form



This form is for use in nominating or requesting determinations for individual properties and districts. See instructions in *How to Complete the National Register of Historic Places Registration Form* (National Register Bulletin 16A). Complete each item by marking "x" in the appropriate box or by entering the information requested. If an item does not apply to the property being documented, enter "N/A" for "not applicable." For functions, architectural classification, materials, and areas of significance, enter only categories and subcategories from the instructions. Place additional entries and narrative items on continuation sheets (NPS Form 10-900a). Use a typewriter, word processor, or computer, to complete all items.

1. Name of Property

historic name Abel Nicholson House

other names/site number _____

2. Location

street & number Hancocks Bridge - Fort Elfsborg Road NA not for publication

city or town Elsinboro Township vicinity

state New Jersey code 034 county Salem code 033 zip code 08079

3. State/Federal Agency Certification

As the designated authority under the National Historic Preservation Act, as amended, I hereby certify that this nomination request for determination of eligibility meets the documentation standards for registering properties in the National Register of Historic Places and meets the procedural and professional requirements set forth in 36 CFR Part 60. In my opinion, the property meets does not meet the National Register criteria. I recommend that this property be considered significant nationally statewide locally. (See continuation sheet for additional comments.)

[Signature] 4/10/96
Signature of certifying official/Title Date
Assistant Commissioner for Natural & Historic Resources/DSHPO
State of Federal agency and bureau

In my opinion, the property meets does not meet the National Register criteria. (See continuation sheet for additional comments.)

Signature of certifying official/Title Date

State or Federal agency and bureau

4. National Park Service Certification

I hereby certify that the property is:

- entered in the National Register.
 See continuation sheet.
- determined eligible for the National Register.
 See continuation sheet.
- determined not eligible for the National Register.
- removed from the National Register.
- other, (explain): _____

Signature of the Keeper

Date of Action

Patrick Andrus

1/16/97

Abel Nicholson House
Name of Property

NJ Salem Co.
County and State

5. Classification

Ownership of Property
(Check as many boxes as apply)

- private
- public-local
- public-State
- public-Federal

Category of Property
(Check only one box)

- building(s)
- district
- site
- structure
- object

Number of Resources within Property
(Do not include previously listed resources in the count.)

Contributing	Noncontributing	
1	0	buildings
0	0	sites
0	0	structures
0	0	objects
1	0	Total

Name of related multiple property listing
(Enter "N/A" if property is not part of a multiple property listing.)

N/A

Number of contributing resources previously listed in the National Register

0

6. Function or Use

Historic Functions
(Enter categories from instructions)

DOMESTIC/single dwelling

Current Functions
(Enter categories from instructions)

VACANT/not in use

7. Description

Architectural Classification
(Enter categories from instructions)

Georgian

Materials
(Enter categories from instructions)

foundation brick

walls brick

roof asphalt shingle (over wood)

other stone (steps)

Narrative Description

(Describe the historic and current condition of the property on one or more continuation sheets.)

United States Department of the Interior
National Park ServiceNational Register of Historic Places
Continuation SheetNJ Salem County
Abel Nicholson HouseSection number 7 Page 1

DESCRIPTION

The Abel Nicholson house is an outstanding example of a Delaware Valley patterned brick house. Built in 1722 and enlarged longitudinally with a brick addition in 1859, it nevertheless remains among the least altered of patterned brick houses. The house is situated near the southern end of a 167-acre tract of nearly level farmland south of the Hancocks Bridge-Fort Elfsborg Road in Elsinboro Township, Salem County. The house, in effect, stands alone, having lost all of its historic period outbuildings, as well as a modern shed in poor condition that shared its site until recently.

1722 Main block--Exterior

The main block of the house--the 1722 section upon which its architectural significance centers--is a two-story, three-bay, single-pile (one-room-deep), brick house on a high, brick foundation (photo #5). This section features a gable roof and an interior end chimney that rises through the peak of the gable on either end. The house faces southerly, just north of Alloways Creek, and the south facade and east elevation (photo #1) are the most imposing sides of the building.

South facade

The south facade, three bays long, consists of a symmetrical design that includes a central entrance reached by a stone and brick stoop. The flanking bays are fenestrated with four-light cellar windows topped with spandrels and shallow brick relieving arches, 12/8 first-story windows, and 8/8 second-story windows. It is unclear whether the windows are originals or sympathetic replacements. Upon close examination they don't appear to comfortably fit the openings they occupy; the second-story windows especially look rather uncomfortable. The muntins also appear to be too narrow to be survivors from the 1720s. However, the windows appear to be the same ones that are shown in the earliest historical photographs.

The walls are laid up in plain English bond (ie. with unvitified headers) up to the water table course, then in Flemish bond with vitrified headers in the first and second stories. A zone of plain English bond between the top of the first-story windows and a corbeled drip course below the second-story windows marks the location of an original pent roof, now missing. The joist pockets for this pent roof are also plainly visible. The front door, a six-panel door, matches those used in the construction of the 1859 west wing, an indication that many of the changes to the original house probably occurred at that time. The door occupies a doorway created by narrowing the original rough opening by adding a column of brick on either side, then constructing a door frame and placing the door within it. Several rows of brick immediately above the door have been replaced, suggesting the possibility that a transom has been replaced, and that perhaps a small column of brickwork from the middle of the pent roof downward once failed and was replaced when the door was replaced.

The stoop is unusual. It appears to have been in its original configuration and contain original stone steps, each one a single piece of sandstone, but the bricks that form the side walls appear to be a later type of common brick than the facade of the house and would thus seem to be evidence of a repair (photo #6).

During the last 110 years, the exterior of the Nicholson house has been photographed several times. The earliest photos were taken in December 1887 by Thomas M. Yorke, and later

United States Department of the Interior
National Park ServiceNational Register of Historic Places
Continuation SheetNJ Salem County
Abel Nicholson HouseSection number 7 Page 2

photos were taken by Lars DeLagerberg in the 1920s and by the Historic American Buildings Survey [HABS] in 1936 and 1941. The 1887 photos show that the building has undergone little change in the last century, an important fact, since one can be reasonably confident that no restoration work would have taken place up to that time, which was before the Colonial Revival took root in rural areas such as Salem County. The 1887 photos show that the pent roof had already disappeared, and that the changes to the front doorway and the brick above it had been made. The photo confirms that the downstairs windows contained 12-light upper sashes over 8-light lower sashes, and that the upstairs windows were 8-over-8. The top stone steps of the porch are visible above the top of a picket fence.

The eastern and western chimneys are both remarkably elaborate, and appear to be original. The 1887 photos show them in the same configurations they now display (photo #2), and there is no evidence that either chimney has been rebuilt. The western chimney is a compound chimney of irregular shape, while the eastern chimney is a simple rectangle in section, modified by a vertical band of projecting bricks on both the east and west sides. Both chimneys exhibit corbeled caps. (The pattern of a compound chimney on the west end and a simple stack on the east end is precisely the arrangement used in the Joseph Darkin house, built in 1720 on Amwellbury Road in Elsinboro Township. The Darkin house is so similar in size, form, and construction details, and has such a similar diamond pattern on its east end gable, and has the numerals 1-7-2-0 formed so similarly to that of the Nicholson house, that it seems inescapable to conclude that they must have been constructed by the same builders. The Darkin house is the oldest known surviving patterned brick house in Salem County, and the Nicholson house is the second-oldest known.)

Further comparison of the 1887 photo with current photos does reveal one small area of 20th-century restoration work. The cellar-windows that flank the front porch are replacements intended to restore a "colonial" look to this feature (photo #5). The 1887 photo shows four courses of brick above each of these cellar windows and below the relieving arches. The color of these brick and the mortar in which they are bedded indicate that they are a patch, which means that the cellar windows beneath had already been replaced at least once. The 1936 HABS photo of the facade shows that a type of two-light cellar window used in the 1859 western section was also installed in the 1722 eastern section. The HABS 1941 photo shows that the 1887 treatment was still in place, but current photos show that the top rail of the cellar window frames occupies space formerly taken up by the brick. The current window is thus taller than its immediate predecessor and was installed after 1941. Its style is Colonial Revival, and it is undoubtedly closer to the original appearance. It was probably installed by or for Mr. and Mrs. Gilbert Harbeson, who bought the house in 1945. Dr. George W. Johnson, in his 1976 book on Salem County patterned brick houses, wrote that "Mr. and Mrs. Harbeson are in the process of restoring the 1722 section to its original outstanding state." (Johnson:1976, p.11)

On either side of the front door, several bricks bear inscribed initials. While it remains possible that some initials could have been scratched into bricks after they were cemented into the wall, the depth of some of the inscriptions suggests that they were carved before the brick was fired (photos #19,20). The initials and how they are distributed are shown in an accompanying sketch. The most remarkable of the inscriptions, reads "MN 1722" and lies to the right of the door.

United States Department of the Interior
National Park Service

National Register of Historic Places Continuation Sheet

NJ Salem County
Abel Nicholson House

Section number 7 Page 3

East Gable end

The east gable end is the highly patterned elevation that sets this house apart from other brick houses of its time (photo #1). The pattern consists of a matrix five diamonds wide at the base, and five diamonds high. A partial sixth row of diamonds is broken by the insertion of the numerals 1-7-2-2, with a single diamond centered above. This pattern is best described by Paul Love, in his 1950 dissertation on patterned brickwork in the American colonies. In comparing the patterned wall of the Nicholson house to that of the Darkin house, he wrote:

...Abel Nicholson attempted to correct such minor flaws. The date, 1722, now seven courses high instead of six, rests more freely in the open space in the diaper [pattern]. The V-form at the apex of the Darkin house is here completed by the extension of the pediment-outline until the two lines meet, forming a diamond of fourteen courses. The remaining diamonds in the diaper cover nineteen courses as they did in the Darkin house. By attempting to retain this height throughout, difficulties were encountered above the eaves level, so that in one diamond on each side the pediment-outline does not coincide with the slope of the diamond but is removed from it by the distance of a stretcher. (Love:1950, p.32).

A small window like those in the north elevation apparently was placed in the upper-left corner of the east wall, to illuminate the attic (photo #4). Placement of such a window is suggested by a patch to the brick wall seen inside the attic and also in the 1887 photos. On the other hand, the clumsy manner in which the repair was carried out on the exterior bears no resemblance to the manner in which the same repair was handled in the west elevation in 1859, which suggests that the nonconforming bricks may be a mere patch for original bricks that had failed. Whether such a window would have been an original feature or not is unclear, since it would have broken both the top row of diamonds and the symmetry of the east elevation.

North (rear) elevation

The rear, or north, elevation (photos #2,3) is similar in composition to the facade. It has the same Flemish-bond brickwork with vitrified headers in the first and second stories, and plain English bond below the watertable course and in a broad band between the first and second stories where a hipped pent roof, now missing, originally covered them. There is no porch to the back door, and a similar patch in the brick over the door shows a similar, 19th-century alteration. It is unclear whether a porch was ever constructed here, or if so, what its form and construction were. No porch appears in the 1936 HABS photo, and the brick wall shows no evidence of any method of attachment of porch timbers. The other significant difference in the rear elevation is the two small, rectangular windows, one in the first story between the door and the east window, and the other directly above it in the second story (photos #2,3). The windows currently occupying these spaces are replacements for what evidently were fixed casement windows used to illuminate the staircase within (see interior description). The upper window still has the upper three-quarters of its heavy, pegged frame intact. This window frame represents a rare survival of an original feature that is seldom encountered because it was discontinued in housing construction in New Jersey probably by the middle of the eighteenth century.

West elevation

The west gable end elevation of the 1722 section was largely obscured by the 1859 addition, but

United States Department of the Interior
National Park ServiceNational Register of Historic Places
Continuation SheetNJ Salem County
Abel Nicholson HouseSection number 7 Page 4

enough remains visible to show that it exhibited some patterning also (photos #3,4). The lower roof line of the 1859 section reveals a small part of the top of the 1722 west gable end wall, revealing a slanted course of vitrified headers that parallels the rake board of the roof--a feature that Paul Love in 1950 termed a "pediment-outline" (see his description, above). The wall, however, did not repeat the diamonds of the east wall. The south facade of the 1859 section is setback a few feet to accommodate the original bulkhead entrance into the cellar of the 1722 house. This setback also reveals that the original treatment over the rest of the wall was more of the Flemish bond with vitrified headers that characterize the north and south elevations. Like the east elevation, however, the composition of the west end did not include a pent roof. It did include, in both the first and second stories near the southwest corner, a small rectangular window of a size and function similar to those of the north elevation. These window spaces were bisected by the facade wall of the 1859 addition, which therefore required that they be bricked up. A third, similar window in the attic is still present. It is a rectangular, four-light casement window, though the casement appears to be a replacement. The location of this window corresponds to the location in the east end wall where a similar window appears to have been bricked up (see above). The type of common brick used is consistent with the other brick repairs in the 1722 section and with the construction of the 1859 addition.

Interior Description

The 1722 main section includes a full cellar, two rooms each on the first and second floors, and an attic.

Cellar: The cellar walls are of brick throughout, and rectangular common bricks of uncertain date pave most of the floor (photos #16,17). Large, arched brick stacks support the chimneys on either end. The walls directly below the front cellar windows are corbeled several courses, which gives the effect of admitting somewhat more light into the basement than if the wall was not corbeled. This appears to be an original treatment rather than a remnant of the 19th-century changes to these windows, because the exterior brickwork under the cellar windows is unaltered. The original entrance into the cellar, still present, was from the bulkhead entry at the south corner of the west wall. Construction of the 1859 addition included an opening through the west foundation wall, making that route the main entry into the cellar. The Harbesons installed two steel I-beams to help support the first-floor joists.

First floor: The first floor has a two-room (hall/parlor) plan, modified by a boxed, winder staircase along the partition wall between the rooms. The front and rear doors open into the hall in the west half of the plan, and the partition is a board wall of wide, carefully planed and edged boards that extend from floor to ceiling (photos #7,8). The edges of each board were carefully molded with a plane (photo #22). This type of wall was frequently employed in partitions of this period, but so few examples survive that this feature can be considered rare. This wall is even more exceptional both because of its completeness and because it wraps around the boxed staircase. The doorway through this wall is situated next to the staircase, and is in its original location. The door is a board-and-batten door in its original location, but the door appears to be a replacement, since its hardware dates from the nineteenth century and because several eighteenth-century paneled doors have survived in this house to suggest that all the original doors in the principal rooms were paneled. The door to the winder staircase is, likewise, a board-and-batten door, but the closet door under the stairs is paneled (photo #8).

United States Department of the Interior
National Park ServiceNational Register of Historic Places
Continuation SheetNJ Salem County
Abel Nicholson HouseSection number 7 Page 5

Situated over the door between the hall and parlor in the partition wall is its most symbolic feature: a pair of heart-shaped cutouts (photos #7,8), each about four inches tall and placed side-by-side in adjoining boards.

The west end wall in the first-floor hall is a paneled fireplace wall little altered from its original appearance (photo #21). The firebox of the chimney consists of a brick floor and three side walls of brick stretchers. The lintel is a brick flat arch, and the facing of the chimney is exposed brick that exhibits signs of having been plastered. Surrounding this is a chimney piece with heavy, unornamented moldings. Above the surround is a molded mantelpiece with mitred returns. There is no overmantel paneling, but a side closet on either side of the chimney features a two-panel door. The closet to the left of the chimney (as one faces it) still has both of its original strap hinges; the closet to the right still retains one original strap hinge, but has lost the other. The left-hand closet is the space that was originally illuminated by the small window bricked up in the west exterior wall when the 1859 addition was built.

The east end wall in the first-floor parlor includes a similar fireplace but the walls of the firebox include three courses of brick stretchers laid in a vertical zig-zag, topped with horizontally laid stretchers and headers. This chimney also features a brick flat arch lintel, and similar molded chimney piece and molded and mitred mantelpiece, but slightly fancier in its use of a few extra moldings (photo #21). To the right of the chimney, a closet finished with a board-and-batten door and simple surround was added in the 19th century into what was originally an open space. The space to the left of the chimney has remained open.

The first- and second-story interior walls and ceiling are plastered, though in some places the ceiling plaster has failed, or been removed to prepare for repairs that were not completed. The flooring on both floors consists largely of original wide boards.

Second floor: Like the first floor, a partition wall divides the second floor space into two bedchambers, a hall chamber (over the hall) and a parlor chamber (over the parlor), modified by the presence of the boxed winder staircase. The staircase is a half-winder that both comes up from the first floor and rises to the attic, ascending in a clockwise direction. The staircase is completely enclosed by the partition wall on this floor, and two doors provide access to the bedchambers. The partition wall is similar to that of the first floor, and is just as complete, but does not repeat the heart-shaped cutouts. The door to the bedchambers are original two-panel doors, though their thumb latches are replacements (photo #11).

On the west side, the hall chamber has a fireplace smaller than those downstairs, centered along the west wall, with an arched lintel, plastered facing, and a molded chimney-piece surround that is much shallower than those downstairs (photo #12). The upstairs fireplaces feature a narrow, horizontal panel between this surround and a molded mantelpiece similar to those downstairs. The west wall does not have a panel over the mantel, but does have a side closet to the left, accessed through an original three-panel door. This door still functions on its original strap hinges. Above it, in the position of a transom, is a wooden screen pierced with a matrix of diamond-shaped holes that would have assured ventilation to the closet. This screen is a replica of the original, made by Gilbert Harbeson; the original is located in the Swedish cabin at the Hancock House State Historic Site at Hancocks Bridge, New Jersey. This closet

United States Department of the Interior
National Park ServiceNational Register of Historic Places
Continuation SheetNJ Salem County
Abel Nicholson HouseSection number 7 Page 6

was originally lit by the small, upstairs window bricked up when the 1859 wing was built.

The east chamber has a similar fireplace, with similar horizontal panel and molded mantelpiece, but it also has a large, horizontal overmantel panel. Like its downstairs counterpart, there were and are no closets on either side of the chimney.

Attic: The attic is open, without partitions, except for a small portion of a partition wall at the top of the staircase from the second floor. Wide floor boards cover part but not all of the attic floor. The roof is supported by common rafters; small collar beams span between the rafters about 2/3 of the distance to the peak. Some rafters may be original, but others are clearly replacements. The roof has been reshingled with asphalt shingles, laid over the existing roof, as a stabilization measure carried out in 1995.

1859 West addition

In 1859, a two-story, single-pile, six-bay, brick wing with gable roof and two interior end chimneys was added to the 1722 house (photos #3,4). This wing is longer, lower, and narrower than the main block, with a shallower basement. The south facade of this wing (photo #4) consists of two side-by-side three-bay divisions each with an entrance flanked by 6-over-6 windows. Original paneled shutters remain in this section. Each unit has two windows in the second story over those in the first and a gabled roof dormer centered over the doorway. The 1887 Yorke photographs show an open leanto shed across the entire front of this section, and a 1+ -story frame shed addition to the west end. The ground floor of this shed addition evidently housed a brick oven. The DeLagerberg photos show that this addition was still standing in the 1920s, but both it and the eastern three-fifths of the leanto shed in the front disappeared before the first HABS photos were taken in 1936. The balance of the leanto shed disappeared after 1941. Their former presence is still indicated by ghost lines left behind on the brick walls. The west end gable contains a small marble block inscribed with the year 1859, by which evidence this wing is dated. An exterior chimney has been added in recent years to accommodate a heating system upgrade. The north (rear) elevation of this wing (photo #3) mirrors the south except for having only one gabled, roof dormer instead of two.

Interior

This wing also retains most of its original detail. The cellar is an open space that links to the basement of the 1722 section through an opening cut through the west foundation wall of the 1722 section. The first and second floors both feature two rooms, east and west, and their decoration is conservative throughout, characterized by plaster walls and ceilings and simple wood trim. Though built in 1859, the interior treatments could easily reflect 1830 as a transitional late-Federal/Greek Revival space. The east room (photo #10) includes a large cooking fireplace with a brick hearth laid in a herringbone pattern. This fireplace is flanked by closets and a winder staircase. The east room has a closed-up fireplace with a mantelpiece including light moldings, a flanking closet, and a chair rail around the room. The second floor rooms are plainer, but still feature six-panel doors (photo #13). The east room has its own stairway from the first floor, with a small closet behind. The western half of the floor is divided into two bedrooms accessed from the winder stair in the northwest corner. The same staircase continues to the attic. The attic is a single undivided space, with plaster walls and ceiling, otherwise undecorated.

United States Department of the Interior
National Park Service

National Register of Historic Places Continuation Sheet

NJ Salem County
Abel Nicholson House

Section number 7 Page 7

Historic Period Outbuildings

At least three other buildings (all long since disappeared) stood on the property during the nineteenth early twentieth centuries. Some of them may have been holdovers from the eighteenth-century outbuildings that supported this property as a working farm. The 1876 atlas of Salem County shows two houses on the property, the Nicholson house and another dwelling to the north about mid-way to the Hancock's Bridge-Fort Elfsborg Road. No photographs of this dwelling are known, and it apparently disappeared during the late nineteenth or early twentieth centuries. Two other outbuildings stood in the vicinity of the Nicholson house and they appear in early twentieth-century photographs. Lars DeLagerberg, an avid student and photographer of early American buildings, photographed the Nicholson house in the 1920s, and later published a book containing many of his photographs (see bibliography). The background of his view of the western addition to the Nicholson house shows both a carriage shed with an attached open shed for a farm wagon, and a large, general-purpose barn. The carriage shed stood to the east of the house and the barn to the north of the carriage shed. Both the barn and the carriage shed were still standing when the HABS photographs were taken in 1941, and the date of their disappearance has not been learned.

8. Statement of Significance

Applicable National Register Criteria

(Mark "x" in one or more boxes for the criteria qualifying the property for National Register listing.)

- A Property is associated with events that have made a significant contribution to the broad patterns of our history.
- B Property is associated with the lives of persons significant in our past.
- C Property embodies the distinctive characteristics of a type, period, or method of construction or represents the work of a master, or possesses high artistic values, or represents a significant and distinguishable entity whose components lack individual distinction.
- D Property has yielded, or is likely to yield, information important in prehistory or history.

Criteria Considerations N/A
(Mark "x" in all the boxes that apply.)

Property is:

- A owned by a religious institution or used for religious purposes.
- B removed from its original location.
- C a birthplace or grave.
- D a cemetery.
- E a reconstructed building, object, or structure.
- F a commemorative property.
- G less than 50 years of age or achieved significance within the past 50 years.

Areas of Significance

(Enter categories from instructions)

Architecture

Exploration/Settlement

Period of Significance

1722 - 1751

Significant Dates

1722

Significant Person

(Complete if Criterion B is marked above)

Nicholson, Abel (1672-1751)

Cultural Affiliation

N/A

Architect/Builder

Mason, John (16 -1726)

Narrative Statement of Significance

(Explain the significance of the property on one or more continuation sheets.)

9. Major Bibliographical References

Bibliography

(Cite the books, articles, and other sources used in preparing this form on one or more continuation sheets.)

Previous documentation on file (NPS):

- preliminary determination of individual listing (36 CFR 67) has been requested
- previously listed in the National Register
- previously determined eligible by the National Register
- designated a National Historic Landmark
- recorded by Historic American Buildings Survey # NJ-305
- recorded by Historic American Engineering Record # _____

Primary location of additional data:

- State Historic Preservation Office
- Other State agency
- Federal agency
- Local government
- University
- Other

Name of repository:

Salem County Historical Society

United States Department of the Interior
National Park ServiceNational Register of Historic Places
Continuation SheetNJ Salem County
Abel Nicholson HouseSection number 8 Page 1

SIGNIFICANCE

The Abel Nicholson house is the finest and most complete surviving example of patterned brickwork from the earliest years of that phenomenon in Salem County, where patterned brickwork reached a higher state of elaboration and acceptance than anywhere else in America. The Nicholson house was built for one of the most prominent members of the Salem Monthly Meeting of Friends, and it was probably the finest house built in Salem County up to that time. Like no other house known to this author, the Nicholson house links the patterned brick phenomenon to other Quaker folkways and building practices common in the Delaware Valley. Accordingly, the Nicholson house possesses national significance under Criterion C as an exemplar of Delaware Valley patterned brickwork; it also possesses local significance under Criterion B, for its association with Abel Nicholson (1672-1751), an important figure in the early settlement of Salem County and in Salem County Quaker affairs.

Background history

The nominated property and the Nicholson family who owned it were associated with important events in the earliest settlement of Salem County. Abel Nicholson was born in Drifton, Nottinghamshire, on May 2, 1672, to Samuel and Anne Nicholson, who were English members of the Society of Friends, or Quakers. With Abel as the youngest of five children, Samuel and Anne joined the expedition organized by John Fenwick to colonize his New World land in West New Jersey. On June 14, 1675, they bought from Fenwick the right to take up 500 acres of land in what would become the Salem Tenth, later Salem County. Soon afterward they left England with Fenwick, sailing across the Atlantic aboard the Griffen, arriving in the Delaware River on November 23, 1675. They were in the first party of English Quakers to settle in the Delaware Valley. The Salem Town lots were surveyed on September 25, 1676, and Samuel Nicholson was allotted one on the north side of Broadway, which included the "Salem Oak" tree that tradition holds was the site where Fenwick negotiated with the local Lenapes to buy their "Indian title" to Salem land. Samuel Nicholson became a leading member of the Salem Monthly Meeting of Friends. In 1680, he donated his house and lot to the Salem Monthly Meeting, which at once had the dwelling converted into a meetinghouse. Nicholson moved the family to a two-thousand-acre tract he bought that year in Elsinboro Township south of the town of Salem. That land, on the Alloways Creek, encompassed the site of the herein nominated property. Samuel was living there when he died in 1690. Abel inherited this, his father's homestead farm, and in 1693, at the age of 21, he received permission from the Salem Friends Meeting to marry Mary Tyler.

In time, Abel himself became a leader of the Salem Monthly Meeting, remaining a "weighty Friend" through the rest of his life. Folklorist Michael Chiarappa has found that Nicholson's name is mentioned 259 times in connection with administrative actions taken by the meeting, more than any other individual. He wrote that Abel Nicholson "built a pattern brickwork dwelling in Elsinborough Township in 1722. The building form and fabric [of his] dwelling signified his influence in the Salem Monthly Meeting." Patterned brickwork in the Delaware Valley was largely a Quaker architecture; it began with the Quakers and throughout the eighteenth century most of the clients who would commission patterned brick houses were "weighty Friends." (Chiarappa:1993, p.6) Nicholson remained active in the meeting well into the 1740s, at which time his son Samuel Nicholson assumed his father's leadership role. Samuel would have a patterned brickwork house built for himself in 1752, following in his father's

United States Department of the Interior
National Park Service

National Register of Historic Places Continuation Sheet

NJ Salem County
Abel Nicholson House

Section number 8 Page 2

footsteps. (Chiarappa:1993, p.324)

Architecture and Folk Building Practice

The decades of Nicholson's adulthood were the years that popularized brick construction in West New Jersey, and the artisanry of the brick trade, seen especially in homes like Nicholson's, would reach a higher level in Salem County than anywhere else in the New World. (Love:1950; Chiarappa:1993) Patterned brickwork was a late medieval practice in Europe that reached a peak in France in the sixteenth century and in England in the seventeenth. Paul Love, a distinguished art historian who studied patterned brick architecture for his doctoral dissertation at Columbia University in the late 1940s, found that more than half of all known examples of patterned brickwork in America occur in six southwestern New Jersey counties (Mercer, Burlington, Camden, Gloucester, Salem, and Cumberland). He also found that of these, Burlington County examples were more numerous (Burlington was a larger, more populous, and wealthier county), but they were also later than Salem County examples and neither as elaborate nor as refined. Salem County led the rest of the Delaware Valley in patterned brickwork, and the Delaware Valley led the rest of America. (Love: 1950) In certain ways, the Nicholson house led Salem County.

It was built during the early years of patterned brickwork popularity. The Quaker migration to the Delaware valley brought many artisans to America, and Quakers--more so than other cultural groups in America--emphasized practical, vocational education over theoretical learning. A significant population of brick artisans came over and others were soon trained in Pennsylvania and New Jersey. Exploitation of the rich and plentiful sources of brick clay quickly began. Bricks were being made in the earliest years of Philadelphia, and the first Friends meetinghouse in Burlington, New Jersey, built in the 1680s, was a brick building. Bricks were being made in Salem County before 1700, and the so-called Bradway-Hall house in Salem City, whose traditional date of 1691 has been disputed, is thought to have been the first patterned brick house in Salem County and New Jersey. (Chiarappa: 1993; Love: 1950; Johnson: 1976)

The brick pattern that is highlighted in the Nicholson is the diamond diaper pattern occupying a complete end wall. The term "diaper" in this context will be confusing to anyone who thinks of the word 'diaper' only as a baby's cloth underwear. Recourse to a dictionary, however, reveals that its architectural sense derives from an analogy to cloth. In the Random House College Dictionary Revised Edition (1984), the second definition of diaper is: "a linen or cotton fabric with a woven pattern of small, constantly repeated figures, as diamonds." The third definition reveals that such a "diaper pattern" was used during the Middle Ages in weaving silk and gold. The word refers both to the pattern itself, and to the act of applying such a pattern, or diapering. Etymologically, the word comes from Middle English, by way of Middle French, Middle Latin, and ultimately from the Middle Greek *diaspros*, meaning pure white.

Love found that a diamond diaper pattern was in wide use in England in the seventeenth century, and he theorizes that such a pattern was well known to the bricklayers who arrived in the Quaker migration. (Love:1950, p.40) The Bradway-Hall house had a small diaper pattern, as did the John Rogers house (1718), Burlington County's earliest patterned-brick house. (HABS: NJ-241; Love:1950; Chiarappa:1993) Some well-known earlier Philadelphia buildings such as Gloria Dei Church (1698-1700) and Trinity Church (1711) display diamonds

United States Department of the Interior
National Park ServiceNational Register of Historic Places
Continuation SheetNJ Salem County
Abel Nicholson HouseSection number 8 Page 3

or strings of diamonds in vitrified headers. The John Darkin house of 1720 is the earliest known patterned-brick house still surviving in Salem County, and, except for the somewhat doubtful date of the Bradley-Hall house in Salem (existing photos show that the visible numerals 1-6-9-1 in the gable were painted on), the Darkin house is the next oldest patterned brick house that has ever been identified in the county.(Love:1950)

The Darkin house stands on Amwellbury Road in Elsinboro Township, only about a mile from the Nicholson house, and has been recognized by Love, Johnson, and Chiarappa as the immediate architectural precedent for the Nicholson house. The two houses share many features in common, including form, fenestration, pent roofs on front and rear elevations, and a diamond diaper pattern with date in the east gable wall. Even the numerals of the date are fashioned in such a similar that the two houses must have had the same master builder and probably some of the same construction crew members. Love believed that the builder of the Nicholson house was intent upon rectifying mistakes made in building the Darkin house.(Love:1950, p.32).

The evidence strongly suggests that John Mason, a brickmaker who by the 1720s was living on a nearby tract in Elsinboro Township was the builder in charge. His initials "I M" appear among those near the door of the Nicholson house. Mason, a Quaker himself from Winchcombe in Gloucestershire, England, was an older brickmaker who had been part of the Friends migration, apparently coming over in the same year (1675) as Fenwick and the Nicholsons (possibly on the same boat?). Mason was an active brickmaker in Philadelphia in the 1680s, moved to Greenwich in Salem (now Cumberland) County in 1687, and spent the remainder of his life in the vicinity. Love reasonably surmises that he was the builder of his own house in Elsinboro. He died in 1726.(Chiarappa:1993, p.416).

With a Quaker builder and a Quaker client, the Nicholson house remarkably exemplifies several building practices that Quakers brought to the Delaware Valley. One may justifiably admire the refinements embodied in this house. A great deal of thought was given to details. The corbeling of the inside wall below the front cellar windows to allow more light into the cellar was one feature. The zigzag courses of the parlor chimney firebox was another. Outside, the pent roof became a common feature of Quaker brick houses--a feature brought directly from England--but here there evidently was a refinement not found in many other houses. Instead of finishing the side of the pent roof flush with the end walls, which was the usual practice elsewhere, in the Nicholson house the ends of the pent roof on both the front and rear elevations were hipped, which gave it a more fine and finished look. What is the evidence for this? Only plain headers and stretchers were employed in those places to be covered by the pent roof. But at each of the ends a small triangular area that the hipped part of the roof would expose has Flemish bond with vitrified headers. The stone steps to the front door were substantial, if not grand. The placement of the staircase in the middle of the plan, instead of in a corner beside a chimney made it more evenly accessible. Creation of a small vestibule on the second floor gave added privacy to the chambers or bedrooms. The corner closets, and the insertion of the small windows to illuminate them and the stairwells show an attention to detail in matters that suggest a woman's voice as well as a man's. The patterning in the east gable wall was the most ambitious attempted to that time, and the date in the gable was better executed than the date in the Darkin house. And finally, the chimneys were the most refined element. One wonders how Nicholson could have convinced other Quakers that they were

United States Department of the Interior
National Park Service

National Register of Historic Places
Continuation Sheet

NJ Salem County
Abel Nicholson House

Section number 8 Page 4

"plain." As far as is known, this was the finest house built in Salem County to that time, and there was much to give satisfaction to the builders.

There is also something to be learned here about the social process of building among the Quakers. And, again, one has to look at the details to see it. There is a remarkable constellation of inscriptions in brick flanking the front door (see sketch, and photos #19,20). These inscriptions are not graffiti; there is nothing casual about how they are inscribed. They aren't merely scratched, they are carved. Some are inscribed deeply and others shallowly, but each is carved in an eighteenth-century style, and no two appear to be by the same hand. The letters are clear and there are so few errant toolmarks on most of the bricks that they could only have been inscribed by experienced persons. They are arranged close together, on adjacent stretchers flanking the door and there are no similar inscriptions anywhere else on the building. The initials do not correspond to the names of subsequent owners. They show every evidence of having been inscribed first, then laid in the wall.

But whose initials were they? The inscribing of dates and initials into architectural elements around the front door was practiced on occasion by several social groups in New Jersey. In Middlesex and Union counties especially, initials and the date of construction were sometimes carved into the lintel over the door. This was a widespread English practice in the sixteenth and seventeenth centuries. (Chiarappa:1993, p.373) In Bergen County Dutch stone houses, the owner's initials and the date were sometimes carved into a stone beside the front stoop. Stories about old houses having a brick inscribed with a date are numerous, but instances where the brick can actually be seen are few and far between. However, at the John Brick house in Greenwich Township, Cumberland County, two bricks were found with deeply burned inscriptions, "DC 1728", and "JJ 1728" incised by the brickmakers before the clay was fired. The Brick house was a patterned brick house built for a Quaker family.

But the number of inscriptions on the Nicholson house clearly mean that something else was going on. The initials are grouped so closely together that they must have been laid on the same day, within minutes of one another. And the first to be laid to the left of the door bore the letters "I M" corresponding to the name of the builder, John Mason. What these brick seem to reveal is that the builders joined in a modest ceremony when the walls had been only about one-third completed, but after the joists for the first floor had been placed. Thus not only the brickmakers and bricklayers but also the carpenter(s) would have been at work on the building. Did these initials represent the entire building team? The brickmakers had ample opportunity to inscribe their initials deeply into unburned bricks, while bricklayers and carpenters could have inscribed their initials more shallowly into bricks already fired. It would appear that each man, in turn, stepped forward with his own brick and cemented it in place.

The eleven sets of initials are given below. The identities offered have not been proven, but instead remain educated guesses.

<u>Initials</u>	<u>Identity or Explanation</u>
AN	Abel Nicholson, owner of house
AR	Unknown
HP	Unknown
WP	William Petty, brickmaker, Phila. and Burlington, d.1747

United States Department of the Interior
National Park Service

National Register of Historic Places
Continuation Sheet

NJ Salem County
Abel Nicholson House

Section number 8 Page 5

IM	John Mason, master brickmaker of Philadelphia, who moved to Elsinboro, who died in 1726. He was a neighbor of Nicholson. Chiarappa, p.416.
SR	Unknown
ER	Unknown
IM EG	Unknown
RN	Unknown, member of family?
MN 1722	Unknown, deeply carved by a brickmaker
NM	Unknown

The fact of so many unknowns means that many of the craftsmen who worked in the building trade in eighteenth-century Salem County have not been identified, a situation that is true of New Jersey generally. But neither Love, nor Chiarappa, nor Gowans have reported any documentation of a ceremony such as this, for which the only record may be the wall itself.

The details of the Nicholson house also reveal at least one other cultural characteristic of the early Quakers. A pair of heart-shaped cutouts (photos #7,8) were placed above the door in the downstairs partition wall between the hall and parlor. They symbolize two hearts joined in marriage--Abel and Mary Nicholson. The Harvard historian David H. Fischer, in contrasting the four British cultural groups that settled America, wrote that "Quaker moralists demanded that love must be a part of every marriage. They believed that marriage should be a union of 'sweethearts,' a word which they often used." (Fischer:1989, p.486) These hearts were as reflective of the partnership in a marriage as the pair of given-name initials that grace the gable of many southern New Jersey patterned brick houses.

There is a suggestion in both Love and Gowan's writings that the Nicholson house was built for Abel when he was a young man, one might imagine as a wedding present. At first glance, the pair of hearts would seem to support this view. But Nicholson turned fifty years of age while his house was going up, and he and Mary Tyler had been married for nearly twenty-nine years. Thus the hearts represented not the young love of newlyweds but rather the mature love of a husband and wife who had sustained a successful marriage.

In various ways, then, the building of the Nicholson house was an important event in the settlement of Salem County because it was an important achievement of the generation that made the trans-Atlantic crossing. The generation that committed themselves to the New World in the 1670s and 1680s built this house in the 1720s. Love was mistaken about Nicholson's age; he thought that the father, Samuel, had been three years old in 1675 when the family came to America, but in reality it was Abel, himself, who was three years old. (Love:1950, p.40) He then compounded his error, by assuming that only bricklayers with no direct experience of English patterned brickwork could have built Nicholson's house. But Abel Nicholson and John Mason were both emigrants. The Nicholsons had come on the same boat with Fenwick, and Mason had come either with them or at about the same time. The location of their lands suggested that they had achieved just a foothold in the New World, but the substantialness of the Nicholson house showed that it was a firm and established beginning. The house represented a cultural fulfillment of Quakerism in the New World, well beyond anything the Nicholsons could have expected had they remained in England.

United States Department of the Interior
National Park ServiceNational Register of Historic Places
Continuation SheetNJ Salem County
Abel Nicholson HouseSection number 8 Page 6Subsequent History of the Property

The Abel Nicholson house went through ownership by several families during the more than two hundred and fifty years since its construction. Apparently no complete title search has been conducted during the long history of the property. The Historic American Buildings Survey missed a golden opportunity in the 1930s. A HABS team drew and measured the house and prepared twenty-two sheets of drawings in 1935; a photographer came back for interior and exterior photographs in 1936 and 1941, and a historian prepared two data pages in 1937. Like many HABS efforts, however, the effort expended on the data pages in no way matched the effort by the architects or the photographers. The HABS historian looked into the history of the property after Nicholson, but summarized this history in only two sentences. "In the two hundred and fourteen years of its history many families have lived in the house. Many names prominent in Salem such as Nicholson, Casper, Stretcher, Wiley, and Nelson have been associated with the house." The Casper and Stretcher families evidently owned the property before 1850.

In 1850, William Nelson transferred the house and farm through his last will and testament to his son William H. Nelson. The 1859 section was built for this Nelson, whose initials and the date were inscribed into a small, white marble block cemented near the peak of the west gable wall. William H., in turn, passed the property through his will, written in 1864, to his son, Davis A. Nelson. The boundaries of the property must have been very different at that time. The 1876 atlas of Salem County noted that "Hy [Henry?] Nelson" was occupying the Nicholson house on 208 acres, and that "D [Davis] Nelson" was occupying the house up the lane, on 205 acres, for a total of more than 400 acres. Mary Amanda Wiley bought the Nicholson house and farm from Davis Nelson in January 1883. That year the Nicholson house was reported to be in "tolerable repair." (Cushing et al:1883, p.419) Wiley, herself died, and left the property to her son, Joseph B. Wiley. The younger Wiley evidently did not reside in the Nicholson house for the entire period of his ownership. When DeLagerberg took his photos in the 1920s, he noted that the house was being occupied by a Wilkinson Cuff. In 1926, after Joseph B. Wiley died, his wife and executrix Emma T. Wiley sold the present, 167-acre property to two men who were themselves absentee owners: Howard Williamson of nearby Hancock's Bridge, and William Shough of Alloway, in Salem County. Williamson and Shough continued in ownership through the HABS years, but in April 1941 they lost the property to the Salem National Bank and Trust Company. The bank held the property through the years of World War II, then sold it in August 1945 to Gilbert R. Harbeson.

For the last fifty years, the property has been associated with two generations of the Harbeson family. In 1949, when Sickler published The Old Houses of Salem County, the house and farm were still owned by "Captain" Gilbert R. Harbeson, who was living in Wilmington, Delaware. At that time, Sickler noted, the property was "chiefly valuable for its marsh rights of muskratting." Gilbert's son, Gilbert H. Harbeson, tenanted the farm from the 1940s onward, finally inheriting it from the estate of his mother, Helena Harbeson, in 1964. Gilbert H. and his wife Sarah Carl Harbeson conducted limited restoration work to the 1722 section of the house in the 1970s. The many years of its being a rental property, until a sympathetic owner could begin careful restoration work, is undoubtedly a large factor in the high state of preservation that the house still possesses. Mary Harbeson eventually outlived her husband, dying in February 1995. In a May 1995 public sale, the property was purchased by its current owner. A transfer to the Salem County Historical Society is being considered.

United States Department of the Interior
National Park Service

National Register of Historic Places
Continuation Sheet

NJ Salem County
Abel Nicholson House

Section number 9 Page 1

MAJOR BIBLIOGRAPHIC REFERENCES

Published Works

Chiarappa, Michael Joseph. "'The First and Best Sort:' Quakerism, Brick Artisanry, and the Vernacular Aesthetics of Eighteenth-Century West New Jersey Pattern Brickwork Architecture." Ph.D. dissertation, University of Pennsylvania, 1992. Ann Arbor, MI: University Microfilms International, 1993.

Cushing, Thomas; and Charles Sheppard. History of the Counties of Gloucester, Salem, and Cumberland, New Jersey, With Biographical Sketches of their Prominent Citizens. Philadelphia: Everts & Peck, 1883.

DeLagerberg, Lars. New Jersey Architecture, Colonial & Federal. Springfield, MA: Walter Whittum Inc., 1956. [copy at Newark Public Library, along with DeLagerberg's collection of photographs].

Fischer, David Hackett. Albion's Seed: Four British Folkways in America. New York: Oxford University Press, 1989.

Gowans, Alan. "The Mansions of Alloways Creek." pp.367-393. in Common Places: Readings in American Vernacular Architecture. Edited by Dell Upton and John Michael Vlach. Athens, GA: University of Georgia Press, 1986.

Johnson, Dr. George Walter. 27 in '76: Patterned Brick Houses in Salem County. privately printed. 1976.

Love, Paul. "Patterned Brickwork in Southern New Jersey." Proceedings of the New Jersey Historical Society 73, 3 (July 1955):182-208.

Shourds, Thomas. History and Genealogy of Fenwick's Colony. Bridgeton, NJ: G.F. Nixon, 1876.

Sickler, Joseph S. The Old Houses of Salem County. 2nd Edition. Salem, NJ: Sunbeam Publishing Co., 1949.

Unpublished Works

Historic American Buildings Survey. Photographs, measured drawings, and data pages of the Abel Nicholson house, Elsinboro Township, Salem County, HABS #NJ-305. Prints and Photographs Division, Library of Congress, Washington, DC (copy at the New Jersey State Archives, Trenton, NJ).

Love, Paul V. "Patterned Brickwork in the American Colonies." Ph.D. dissertation, Columbia University, 1950.

Riesenweber, Julie. "Order in Domestic Space: House Plans and Room Use in the Vernacular Dwellings of Salem County, New Jersey, 1700-1774." M.A. thesis, University of Delaware, December 1984.

United States Department of the Interior
National Park Service

National Register of Historic Places Continuation Sheet

NJ Salem County
Abel Nicholson House

Section number 9 Page 2

Yorke, Thomas J. Photograph album of old houses in Salem County. 1887. Salem County
Historical Society, Salem, NJ.

Abel Nicholson House
Name of Property

NJ Salem Co.
County and State

10. Geographical Data

Acreeage of Property 167 acres

Salem NJ Quad

UTM References

(Place additional UTM references on a continuation sheet.)

1

1	8
---	---

4	5	8	4	2	0
---	---	---	---	---	---

4	3	7	5	1	2	5
---	---	---	---	---	---	---

Zone Easting

Northing

2

1	8
---	---

4	5	8	4	7	0
---	---	---	---	---	---

4	3	7	3	8	4	0
---	---	---	---	---	---	---

3

1	8
---	---

4	5	7	8	5	0
---	---	---	---	---	---

4	3	7	3	9	3	0
---	---	---	---	---	---	---

Zone Easting

Northing

4

1	8
---	---

4	5	7	8	6	0
---	---	---	---	---	---

4	3	7	5	1	3	0
---	---	---	---	---	---	---

See continuation sheet

Verbal Boundary Description

(Describe the boundaries of the property on a continuation sheet.)

Boundary Justification

(Explain why the boundaries were selected on a continuation sheet.)

11. Form Prepared By

name/title Robert W. Craig, Principal Historic Preservation Specialist

organization New Jersey Historic Preservation Office date February 1996

street & number CN 404 telephone (609) 292-2028

city or town Trenton state NJ zip code 08625-0404

Additional Documentation

Submit the following items with the completed form:

Continuation Sheets

Maps

A **USGS map** (7.5 or 15 minute series) indicating the property's location.

A **Sketch map** for historic districts and properties having large acreage or numerous resources.

Photographs

Representative **black and white photographs** of the property.

Additional items

(Check with the SHPO or FPO for any additional items)

Property Owner

(Complete this item at the request of SHPO or FPO.)

name The Francis Corporation

street & number P.O. Box 236 N33 telephone _____

city or town Hancocks Bridge state NJ zip code 08038

Paperwork Reduction Act Statement: This information is being collected for applications to the National Register of Historic Places to nominate properties for listing or determine eligibility for listing, to list properties, and to amend existing listings. Response to this request is required to obtain a benefit in accordance with the National Historic Preservation Act, as amended (16 U.S.C. 470 *et seq.*).

Estimated Burden Statement: Public reporting burden for this form is estimated to average 18.1 hours per response including time for reviewing instructions, gathering and maintaining data, and completing and reviewing the form. Direct comments regarding this burden estimate or any aspect of this form to the Chief, Administrative Services Division, National Park Service, P.O. Box 37127, Washington, DC 20013-7127; and the Office of Management and Budget, Paperwork Reductions Projects (1024-0018), Washington, DC 20503.

United States Department of the Interior
National Park Service

National Register of Historic Places Continuation Sheet

NJ Salem County
Abel Nicholson House

Section number 10 Page 1

VERBAL BOUNDARY STATEMENT

The nominated property includes the entire 167-acre tract on which the Nicholson house is situated (see boundary map).

BOUNDARY JUSTIFICATION

The nominated property is the remaining portion of the land that Abel Nicholson owned here in the 18th century.

United States Department of the Interior
National Park Service

National Register of Historic Places Continuation Sheet

NJ Salem County
Abel Nicholson House

Section number Photo Page 1

PHOTOGRAPH LISTING SHEET

The photographs were taken in September 1991 by Philip G. Correll, and in April 1995, by Philip G. Correll and Robert W. Craig; color slides were taken by Constance M. Greiff in April 1995.

The negatives are held by Philip G. Correll.

United States Department of the Interior
National Park Service

National Register of Historic Places
Continuation Sheet

Section number Photo Page 2

NJ, Salem County
Abel Nicholson House

Photo #1 of 22

3. Philip G. Correll
4. September 1991
5. Philip G. Correll (324 Walnut Street Road, Salem, NJ 08079)
6. Exterior, 1722 wing. View looking west of east gable end with brick pattern and 1722 date.

Photo #2 of 22

3. Philip G. Correll
4. September 1991
5. Philip G. Correll (324 Walnut Street Road, Salem, NJ 08079)
6. Exterior. View looking southwest of east gable and north wall.

Photo #3 of 22

3. Philip G. Correll
4. September 1991
5. Philip G. Correll (324 Walnut Street Road, Salem, NJ 08079)
6. Exterior. View looking southeast of north wall and west gable end.

Photo #4 of 22

3. Philip G. Correll
4. September 1991
5. Philip G. Correll (324 Walnut Street Road, Salem, NJ 08079)
6. Exterior. View looking northeast of west gable end and south wall of 1859 wing.

Photo #5 of 22

3. Philip G. Correll
4. September 1991
5. Philip G. Correll (324 Walnut Street Road, Salem, NJ 08079)
6. Exterior, 1722 wing. View looking northwest of south wall and east gable.

United States Department of the Interior
National Park Service

**National Register of Historic Places
Continuation Sheet**

Section number Photo Page 3

NJ, Salem County
Abel Nicholson House

Photo #6 of 22

3. Philip G. Correll
4. September 1991
5. Philip G. Correll (324 Walnut Street Road, Salem, NJ 08079)
6. Exterior, 1722 wing. View looking northwest of south wall and steps.

Photo #7 of 22

3. Philip G. Correll
4. April 28, 1995
5. Philip G. Correll (324 Walnut Street Road, Salem, NJ 08079)
6. Interior, 1722 wing, 1st floor, east parlor (Room B on HABS plans). View looking northwest of beaded board wall dividing the two parlors.

Photo #8 of 22

3. Philip G. Correll
4. April 28, 1995
5. Philip G. Correll (324 Walnut Street Road, Salem, NJ 08079)
6. Interior, 1722 wing, 1st floor, west parlor (Room A on HABS plans). View looking northeast of beaded board wall dividing the two parlors.

Photo #9 of 22

3. Philip G. Correll
4. April 28, 1995
5. Philip G. Correll (324 Walnut Street Road, Salem, NJ 08079)
6. Interior, 1859 wing, 1st floor, east room (Dining Room C on HABS plans). View looking northeast toward closet and door to 1722 wing.

Photo #10 of 22

3. Philip G. Correll
4. April 28, 1995
5. Philip G. Correll (324 Walnut Street Road, Salem, NJ 08079)
6. Interior, 1859 wing, 1st floor, west room (Kitchen on HABS plans). View looking northwest toward cooking fireplace and stairs to second floor.

United States Department of the Interior
National Park Service

National Register of Historic Places
Continuation Sheet

NJ, Salem County
Abel Nicholson House

Section number Photo Page 4

Photo #11 of 22

3. Philip G. Correll
4. April 28, 1995
5. Philip G. Correll (324 Walnut Street Road, Salem, NJ 08079)
6. Interior, 1722 wing, 2nd floor, east bedroom (Bedroom E on HABS plans).
View looking northwest of beaded board wall dividing the two bedrooms.

Photo #12 of 22

3. Philip G. Correll
4. April 28, 1995
5. Philip G. Correll (324 Walnut Street Road, Salem, NJ 08079)
6. Interior, 1722 wing, 2nd floor, west bedroom (Bedroom D on HABS plans).
View looking west of closet door, beaded board wall, fireplace, and door
(to right) leading to 1859 wing.

Photo #13 of 22

3. Philip G. Correll
4. April 28, 1995
5. Philip G. Correll (324 Walnut Street Road, Salem, NJ 08079)
6. Interior, 1859 wing, 2nd floor, east bedroom (Bedroom on HABS plans).
View looking northwest toward stairs to 1st floor.

Photo #14 of 22

3. Philip G. Correll
4. April 28, 1995
5. Philip G. Correll (324 Walnut Street Road, Salem, NJ 08079)
6. Interior, 1859 wing, 3rd floor, attic (Attic on HABS plans). View looking
west.

Photo #15 of 22

3. Philip G. Correll
4. April 28, 1995
5. Philip G. Correll (324 Walnut Street Road, Salem, NJ 08079)
6. Interior, 1722 wing, 3rd floor, attic (Attic on HABS plans). View looking
east with stairwell access to left.

United States Department of the Interior
National Park Service

National Register of Historic Places
Continuation Sheet

NJ, Salem County
Abel Nicholson House

Section number Photo Page 5

Photo #16 of 22

3. Philip G. Correll
4. April 28, 1995
5. Philip G. Correll (324 Walnut Street Road, Salem, NJ 08079)
6. Interior, 1722 wing, Cellar, east room. View looking east toward fireplace arch.

Photo #17 of 22

3. Philip G. Correll
4. April 28, 1995
5. Philip G. Correll (324 Walnut Street Road, Salem, NJ 08079)
6. Interior, 1722 wing, Cellar, west room. View looking west toward fireplace arch.

Photo #18 of 22

3. Philip G. Correll
4. April 28, 1995
5. Philip G. Correll (324 Walnut Street Road, Salem, NJ 08079)
6. Interior, 1722 wing, 2nd floor, east bedroom (Bedroom E on HABS plans).
View looking east of fireplace and paneled chimney breast.

Photo #19 of 22

3. Robert W. Craig
4. April 28, 1995
5. Salem County Historical Society, 79-83 Market Street, Salem, NJ 08079
6. Exterior, 1722 wing, 1st floor, View looking north of brick detail around entrance door at top of stone steps on south side

Photo #20 of 22

3. Robert W. Craig
4. April 28, 1995
5. Salem County Historical Society, 79-83 Market Street, Salem, NJ 08079
6. Exterior, 1722 wing, 1st floor, View looking north of brick detail around entrance door at top of stone steps on south side

United States Department of the Interior
National Park Service

**National Register of Historic Places
Continuation Sheet**

NJ, Salem County
Abel Nicholson House

Section number Photo Page 6

Photo #21 of 22

3. Robert W. Craig
4. April 28, 1995
5. Salem County Historical Society, 79-83 Market Street, Salem, NJ 08079
6. Interior, 1722 wing, 1st floor, west parlor (Room A on HABS plans). View looking west detail of mantle and fireplace surround.

Photo #22 of 22

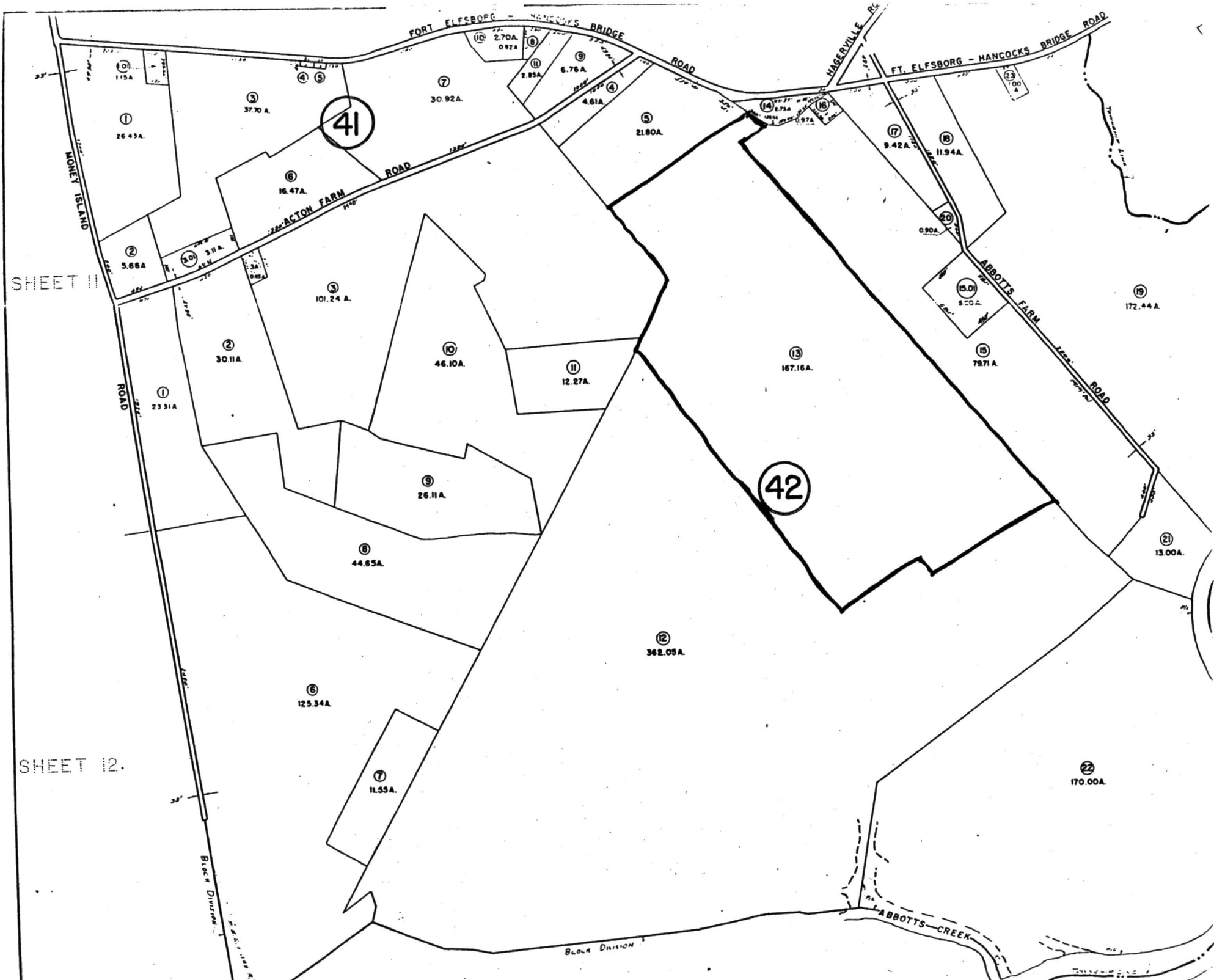
3. Robert W. Craig
4. April 28, 1995
5. Salem County Historical Society, 79-83 Market Street, Salem, NJ 08079
6. Interior, 1722 wing, 1st floor, detail of beaded board wall that separates east and west parlors (Rooms A & B on HABS plans).

PGC/pc
Nichlsn2

Abel Nicholson House, Elsinboro Township, Warren County, New Jersey

SHEET 11

SHEET 12.



41

42

1
26.43A.

2
5.66A

1
23.31A

3
37.70 A.

2
30.11A

3
26.11A.

6
125.34A.

7
11.55A.

6
16.47A.

3
101.24 A.

8
44.65A.

7
30.92A.

10
46.10A.

9
26.11A.

6
125.34A.

7
11.55A.

6
16.47A.

3
101.24 A.

8
44.65A.

10
2.70A
0.92A

7
30.92A.

10
46.10A.

9
26.11A.

6
125.34A.

7
11.55A.

6
16.47A.

3
101.24 A.

8
44.65A.

8
7.85A

9
6.76 A.

11
12.27A.

9
26.11A.

6
125.34A.

7
11.55A.

6
16.47A.

3
101.24 A.

8
44.65A.

4
4.61A

5
21.80A.

11
12.27A.

9
26.11A.

6
125.34A.

7
11.55A.

6
16.47A.

3
101.24 A.

8
44.65A.

14
2.73A

5
21.80A.

11
12.27A.

9
26.11A.

6
125.34A.

7
11.55A.

6
16.47A.

3
101.24 A.

8
44.65A.

15
0.97A

5
21.80A.

11
12.27A.

9
26.11A.

6
125.34A.

7
11.55A.

6
16.47A.

3
101.24 A.

8
44.65A.

17
9.42A

13
167.16A.

11
12.27A.

9
26.11A.

6
125.34A.

7
11.55A.

6
16.47A.

3
101.24 A.

8
44.65A.

18
11.94A.

13
167.16A.

11
12.27A.

9
26.11A.

6
125.34A.

7
11.55A.

6
16.47A.

3
101.24 A.

8
44.65A.

19
172.44 A.

13
167.16A.

11
12.27A.

9
26.11A.

6
125.34A.

7
11.55A.

6
16.47A.

3
101.24 A.

8
44.65A.

20
0.90A

13
167.16A.

11
12.27A.

9
26.11A.

6
125.34A.

7
11.55A.

6
16.47A.

3
101.24 A.

8
44.65A.

21
13.00A.

13
167.16A.

11
12.27A.

9
26.11A.

6
125.34A.

7
11.55A.

6
16.47A.

3
101.24 A.

8
44.65A.

22
170.00A.

13
167.16A.

11
12.27A.

9
26.11A.

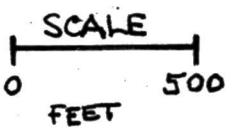
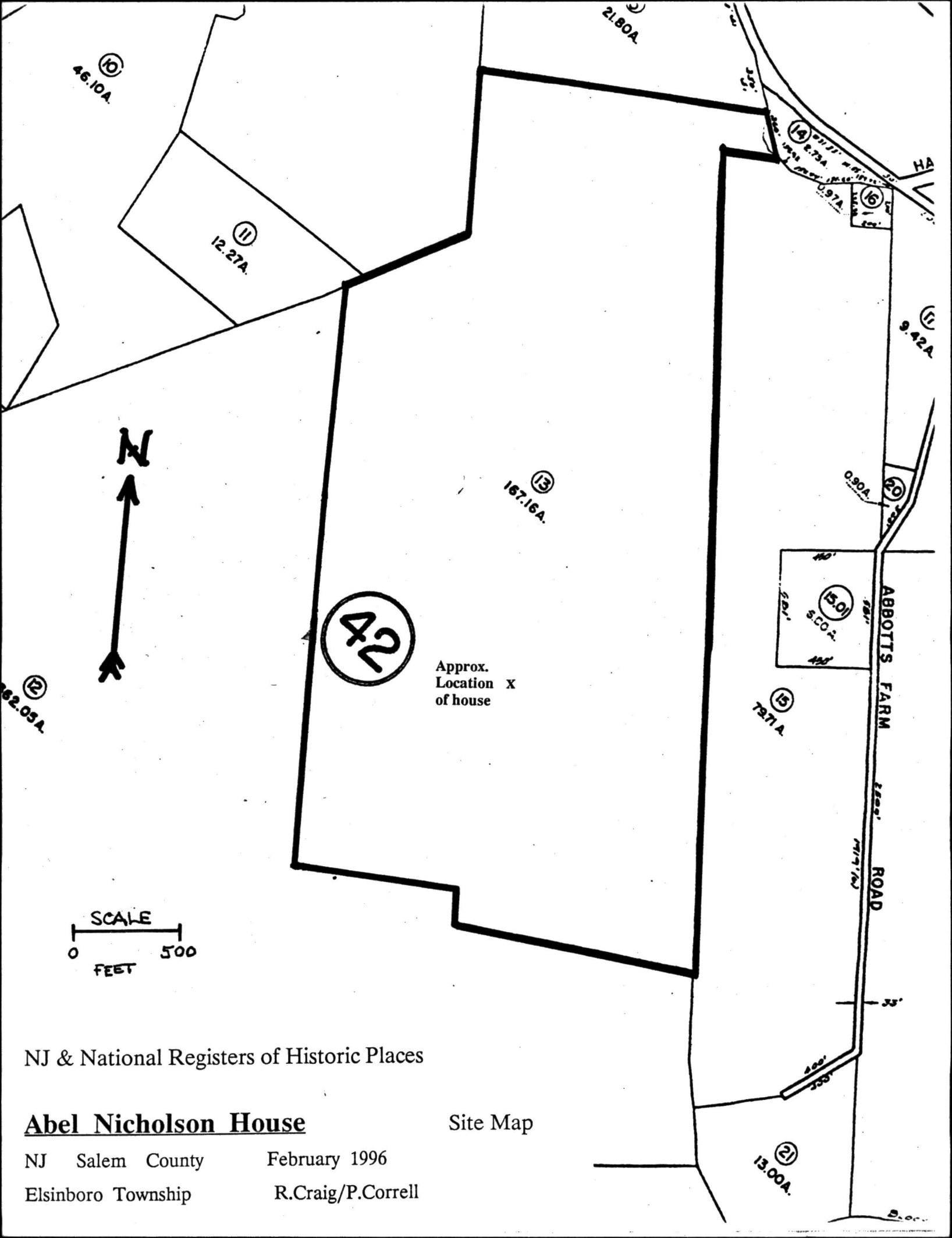
6
125.34A.

7
11.55A.

6
16.47A.

3
101.24 A.

8
44.65A.



42

Approx.
Location X
of house

NJ & National Registers of Historic Places

Abel Nicholson House

Site Map

NJ Salem County
Elsinboro Township

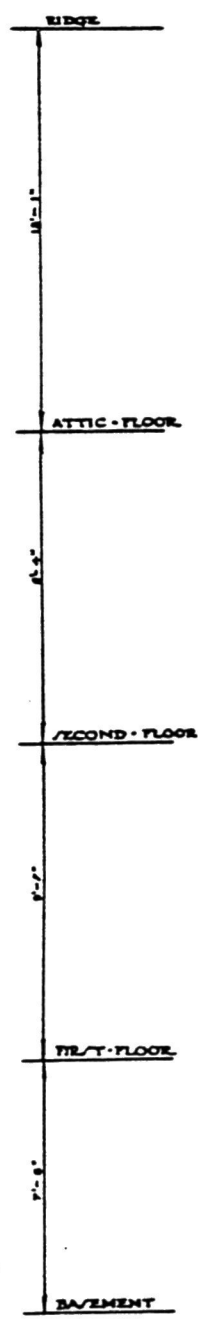
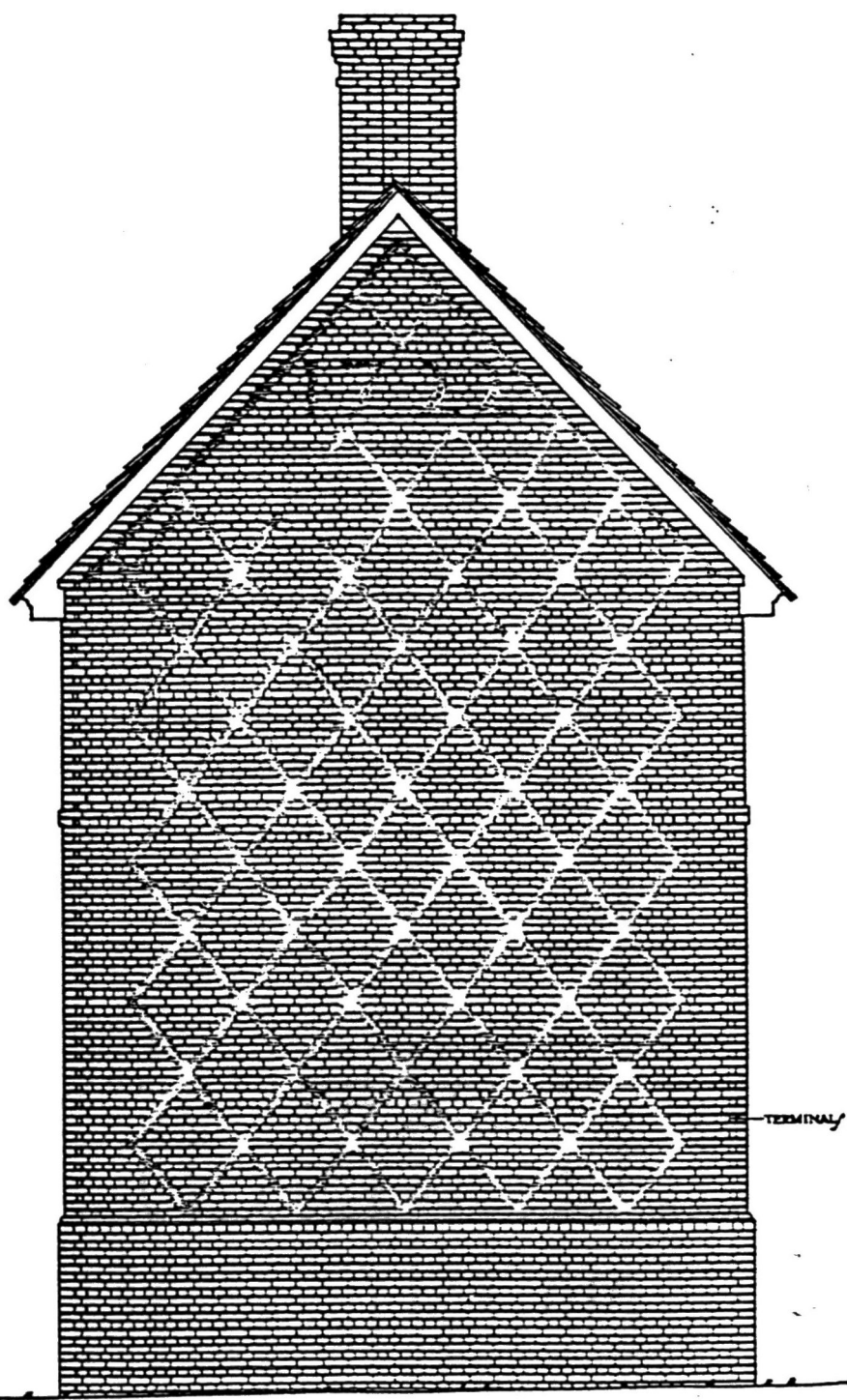
February 1996
R.Craig/P.Correll

WORK-PROJECT-ADMINISTRATION
OFFICIAL-PROJECT-NR. 68-1-21-83
CONSENT-RESOLUTION-OF-CITY-OF-NEW-YORK-REPLACEMENT-OF-THE-EXTERIOR

ELISNBORO-TWP., SALEM COUNTY, NEW JERSEY
ABEL-NICHOLSON-HOUSE
PLANNING-TOWN/SHIP-VAL-P.A. COMMUNITY-N.P.W. - JPB/JV

SURVEY NO. N.J. 404
HISTORIC AMERICAN BUILDINGS SURVEY

Elisnboro Twp., Salem County, New Jersey



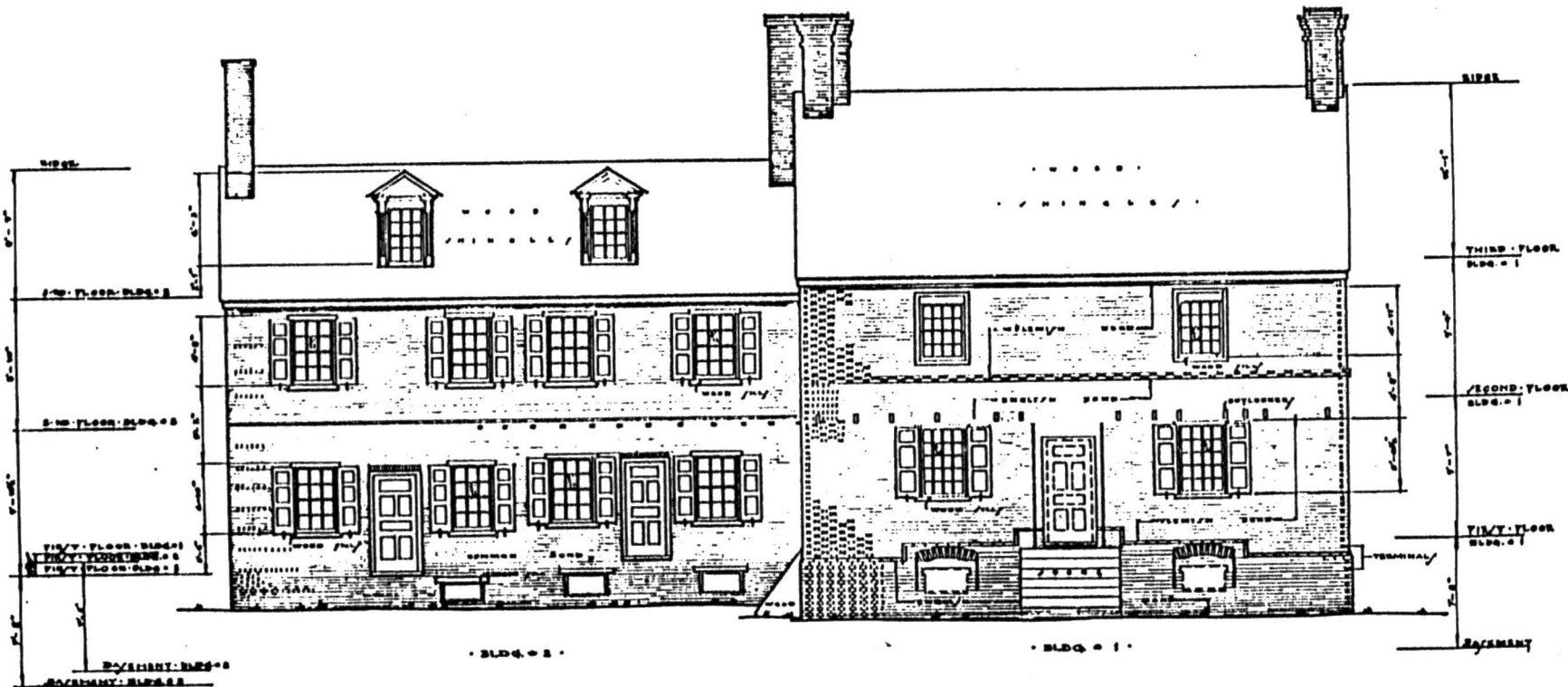
· EAST-ELEVATION ·
SCALE $\frac{1}{4}$ " = 1'-0"

LEGEND
■ /ALT-GLAZED-BRICK

NOTE
BRICK-LAY: ENGLISH-BOND / SIZE OF
BRICK: 0 $\frac{1}{2}$ " x 4 $\frac{1}{2}$ " x 2 $\frac{1}{2}$ " - JOINT: $\frac{1}{4}$ " - / SIZE
OF TERMINAL: 2'-2 $\frac{1}{2}$ "



O-L. PAHL - DEL.



- SOUTH ELEVATION -
SCALE 1/8" = 1'-0"

NOTE
 SIZE OF BRICK - BLDG. 1 - 8" x 2 1/2"
 SIZE OF TERMINAL - 1' x 1' 6"
 BRICK IN BELT COURSE LAID FLINT & BOND
 BRICK IN WATERTABLE LAID IN FRENCH

LEGEND
 ■ GLAZED HEADS



MATTHEW DEL
 S. PAHL DEL

Elsinboro Twp, Salem County, NJ

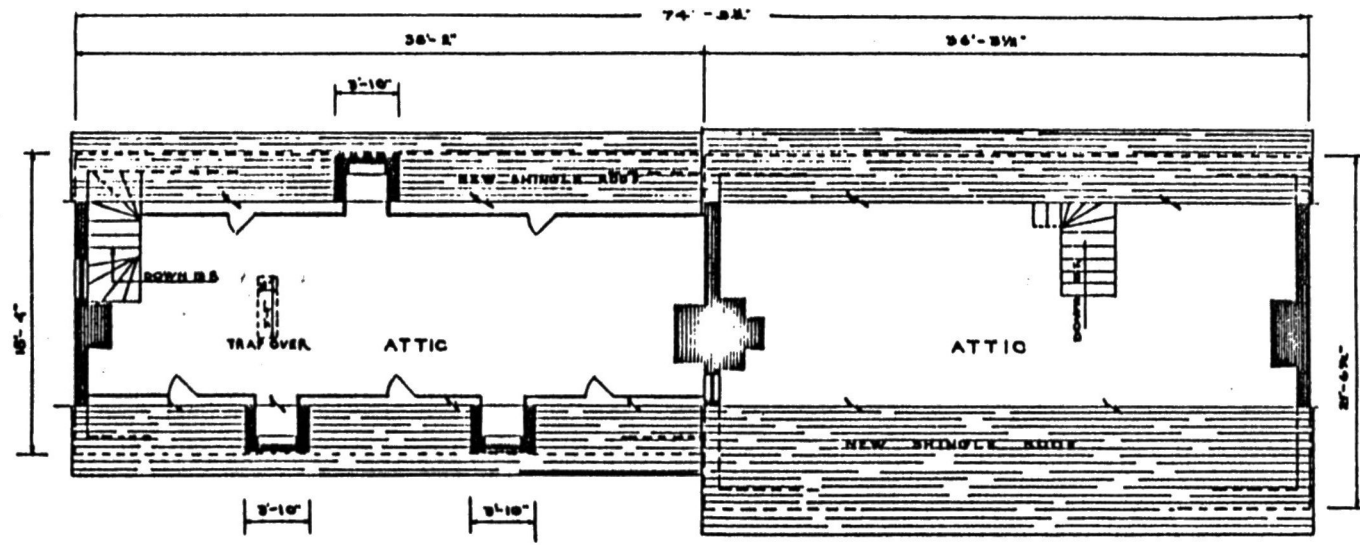
WORK PROJECT / ADMINISTRATION
 OFFICIAL PROJECT NO 68-1-22-52

NAME OF STRUCTURE
 - ABEL NICHOLSON HOUSE -

SURVEY NO.
 N.J.
 704

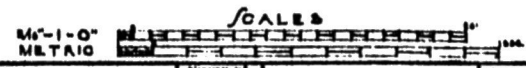
HISTORIC AMERICAN
 BUILDINGS SURVEY
 SHEET 7 OF 22 SHEETS

DATE OF DRAWING
 1952



ATTIC PLAN

LEGEND
 BAICK [hatched box] WOOD [solid black box]



A. LOGAN DEL.

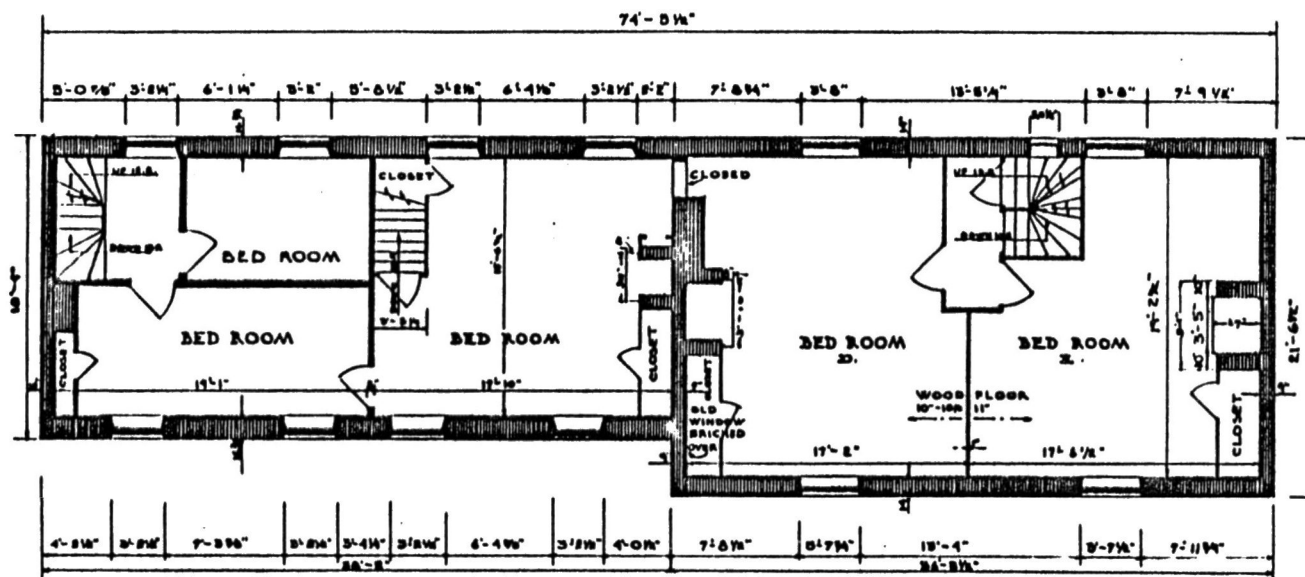
WORK PROJECTS ADMINISTRATION
 OFFICIAL PROJECT No. 68-1-12-82
UNDER DIRECTION OF UNITED STATES DEPARTMENT OF THE INTERIOR
 NATIONAL PARK SERVICE, BRANCH OF PLANS AND DESIGN

NAME OF STRUCTURE
ABEL NICHOLSON HOUSE
 ELSINBORO TOWNSHIP SALEM COUNTY NEW JERSEY

SURVEY NO.
 N. J.
 308

HISTORIC AMERICAN
 BUILDINGS SURVEY
 SHEET 4 OF 22 SHEETS

UNLESS OTHERWISE SPECIFIED



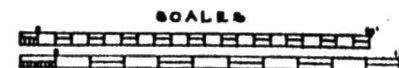
SECOND FLOOR PLAN

LEGEND

BRICK WOOD

Elsinboro Twp., Salem County, New Jersey

1/4" = 1'-0"
METRIC



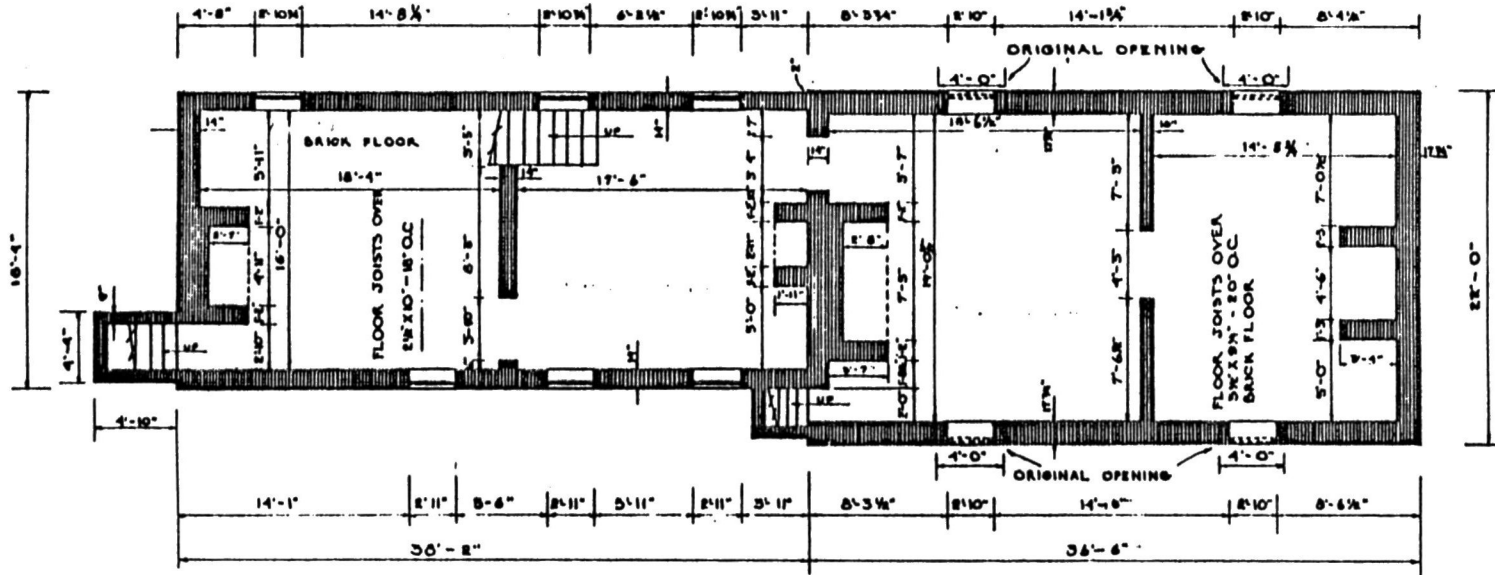
R. LOGAN DEL.
WORK PROJECTS ADMINISTRATION
OFFICIAL PROJECT NO. (S. 123-97)

NAME OF STRUCTURE
ABEL NICHOLSON HOUSE.

SURVEY NO.
N. J.

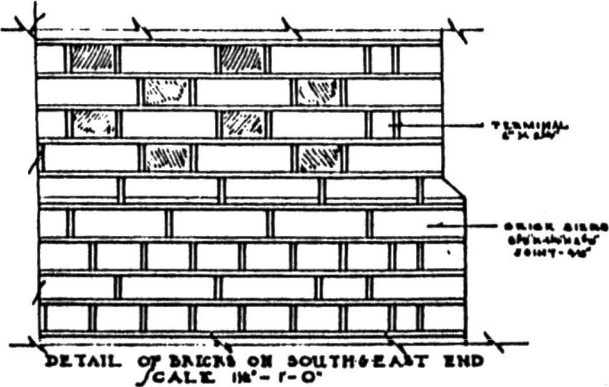
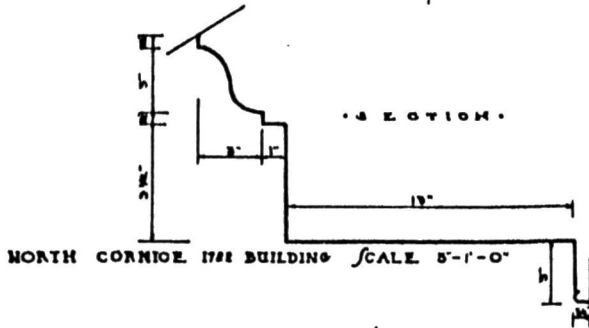
HISTORIC AMERICAN
PULLINGER BUREAU

DATE OF SURVEY
1960



CELLAR PLAN
SCALE 3/4" = 1'-0"

NO. 1
GLAZED BRICK



A. LOGAN DEL.

17-HANDWRITING

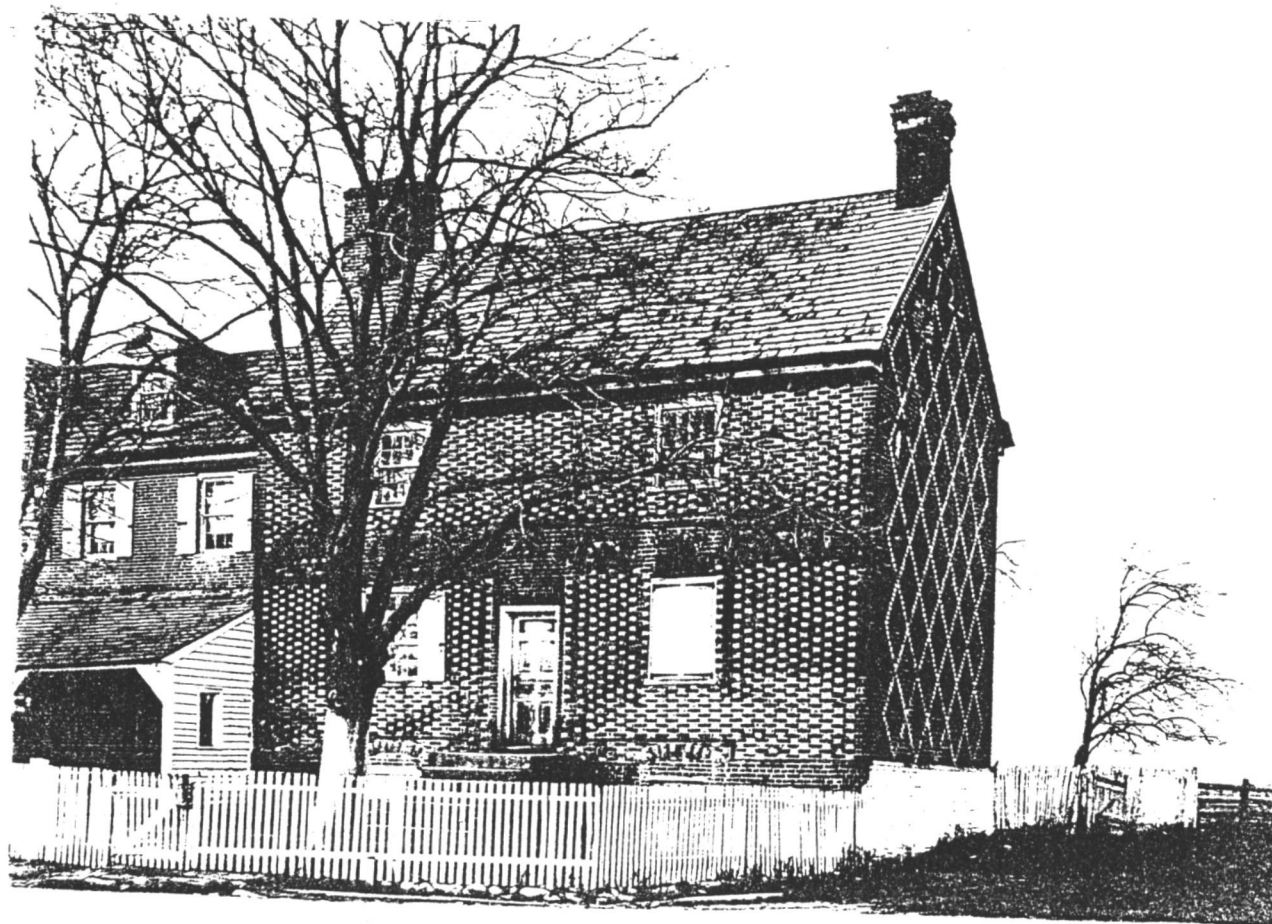
WORK PROJECTS ADMINISTRATION
OFFICIAL PROJECT No. 65-1-22-82
UNDER DIRECTION OF UNITED STATES DEPARTMENT OF THE INTERIOR
NATIONAL PARK SERVICE, IN CHARGE OF PLANS AND DESIGN

NAME OF STRUCTURE
ABEL NICHOLSON HOUSE
ELSINORO TOWNSHIP SALEM COUNTY NEW JERSEY

SURVEY NO.
N.J. 308
HISTORIC AMERICAN BUILDINGS SURVEY
SHEET 1 OF 22 SHEETS

3/4" = 1'-0"
METRIC



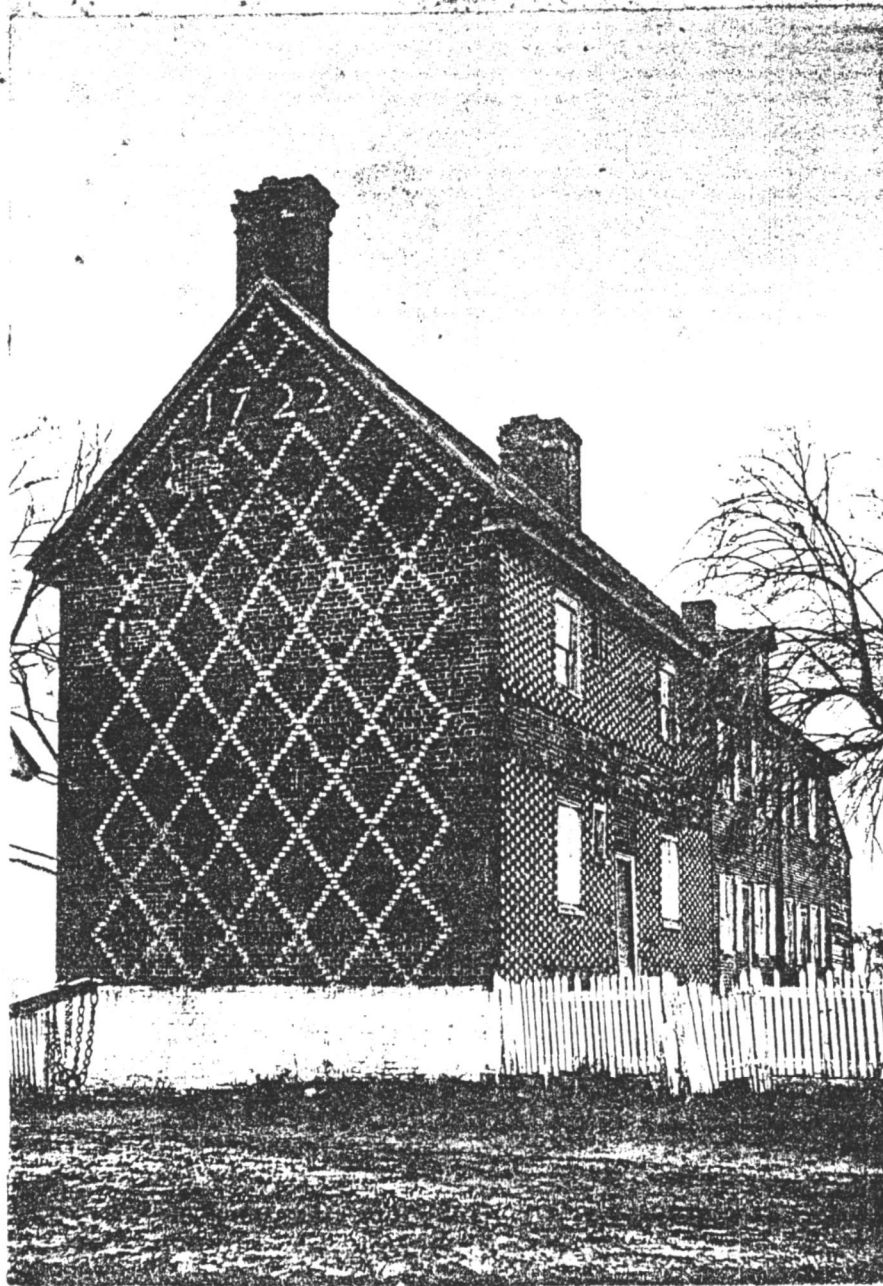


ABEL NICHOLSON . ELSINBORO

YORKE - 1887

1722

NJ, SALEM COUNTY
ABEL NICHOLSON HOUSE
J21



ABEL NICHOLSON ELSINBORO

NS SALEM COUNTY
ABEL NICHOLSON HOUSE

YORKE - 1887

1722

281-

1887



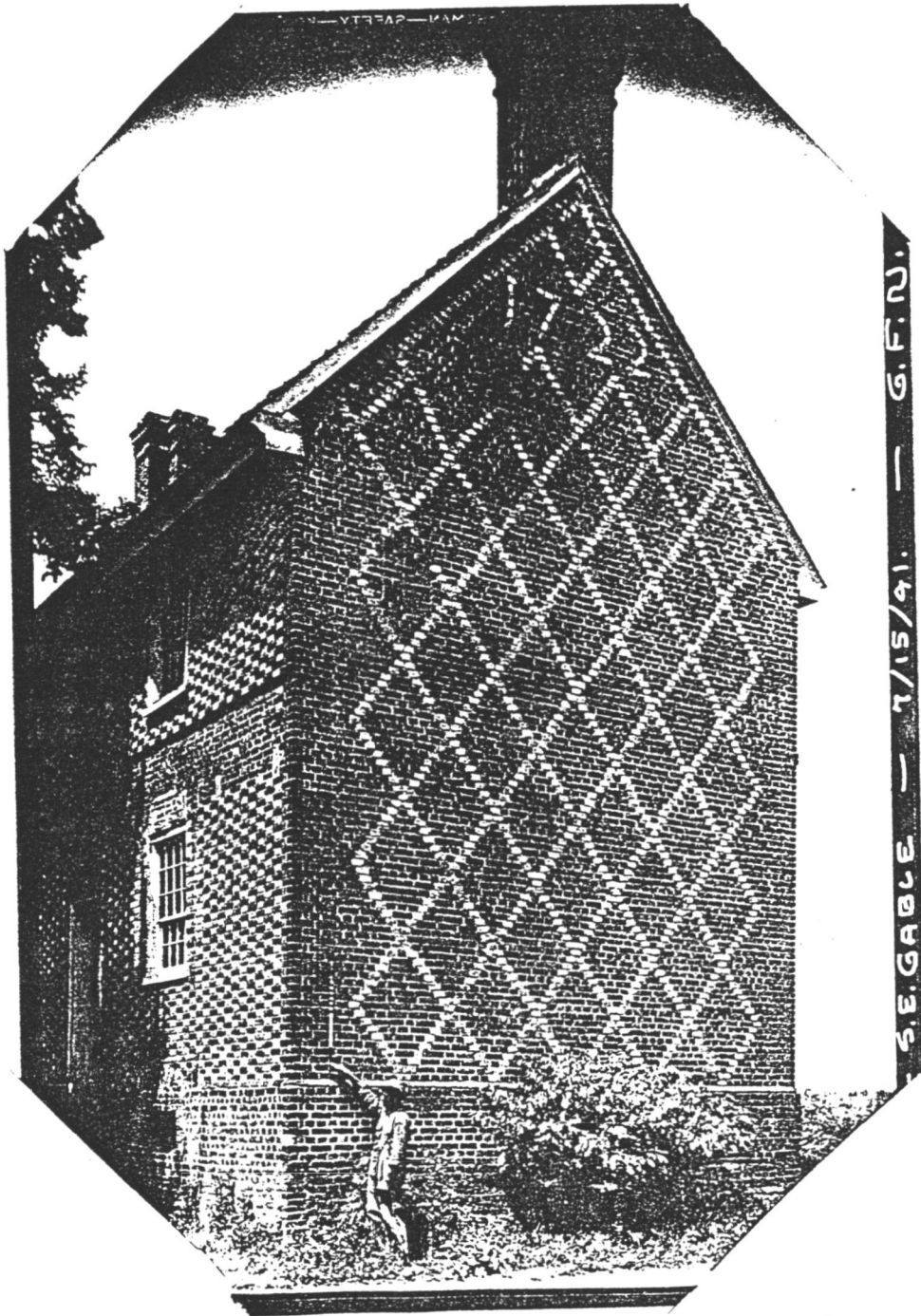
HABS - 1936

NS, SALEM COUNTY,
ABEL NICHOLSON HOUSE

Abel Nicholson House
Elsinboro Township
Salem County, New Jersey

HABS-NJ-305

PAGE
17
17-ABE.1
3-3



Historic American Buildings Survey
George Neuschafer, Photographer

July 15, 1941

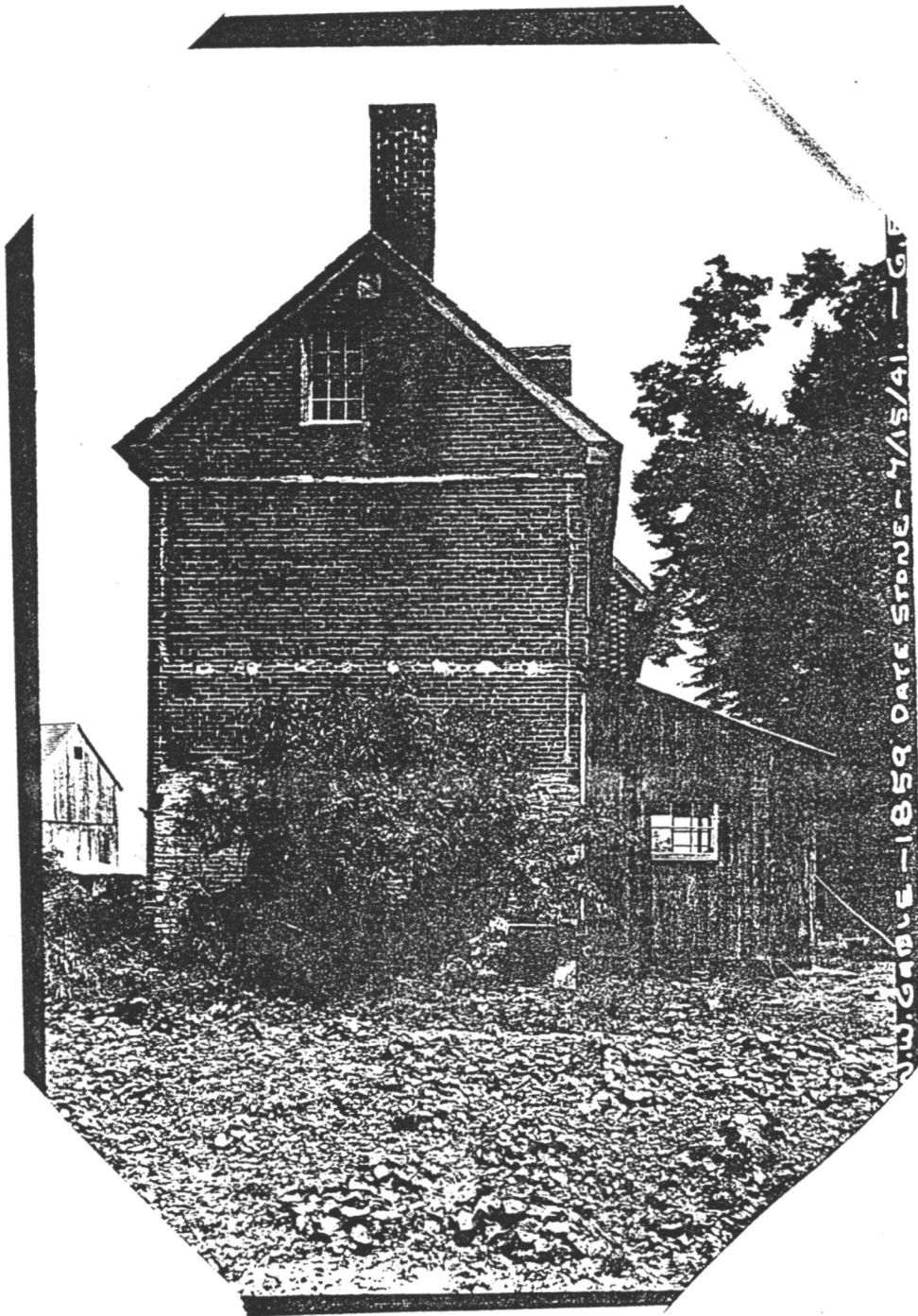
EXTERIOR - SOUTHEAST GABLE

HABS - 1941.

Abel Nicholson House
Elsinboro Township
Salem County, New Jersey

HABS-NJ-305

HABS
NJ
17-HABS
34



Historic American Buildings Survey
George Neuschafer, Photographer

July 15, 1941

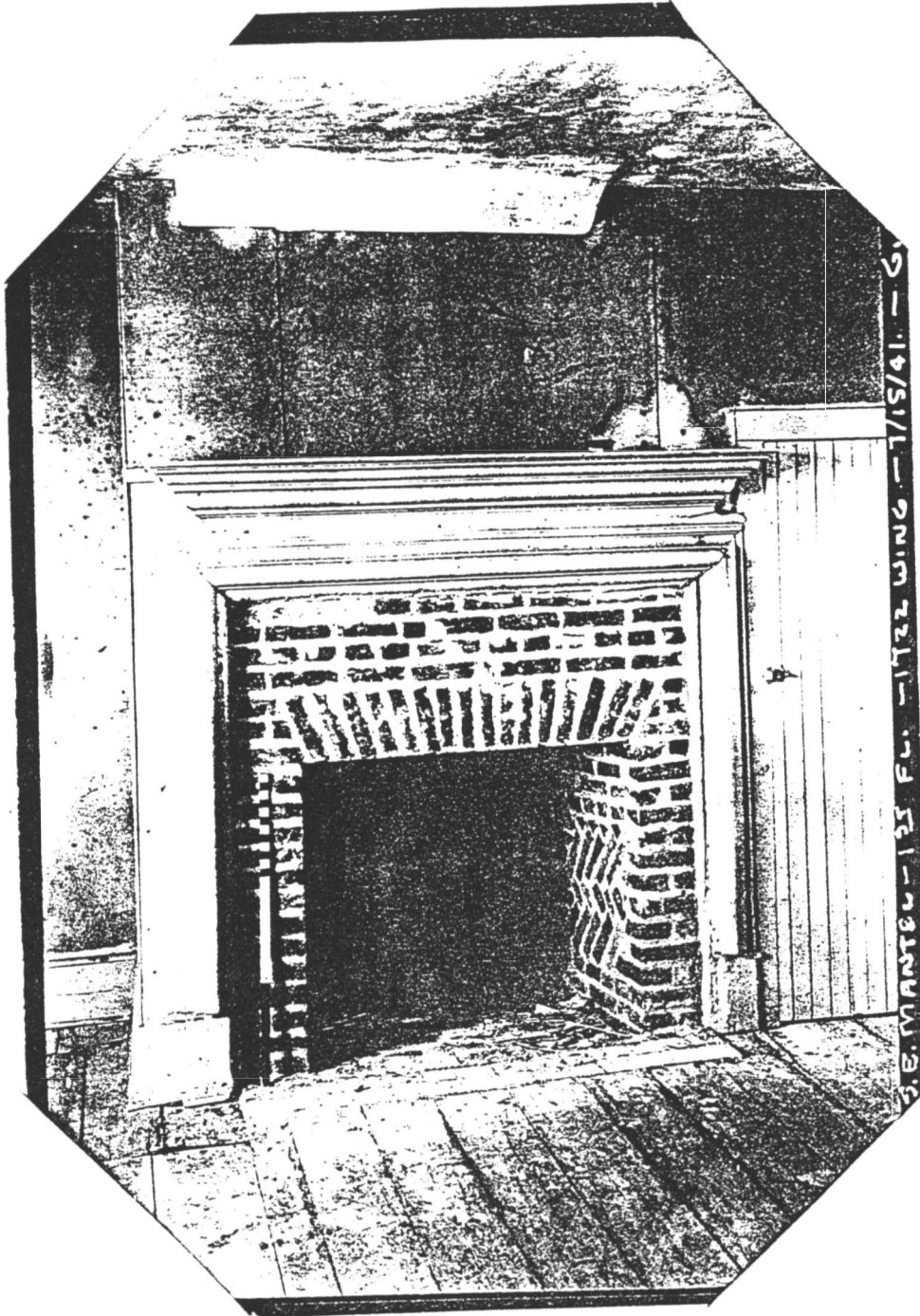
EXTERIOR - NORTHWEST GABLE - 1859 DATESTONE

HABS - 1941

Abel Nicholson House
Elsinboro Township
Salem County, New Jersey

HABS-NJ-305

HABS
NJ
17-HANB017
3-5



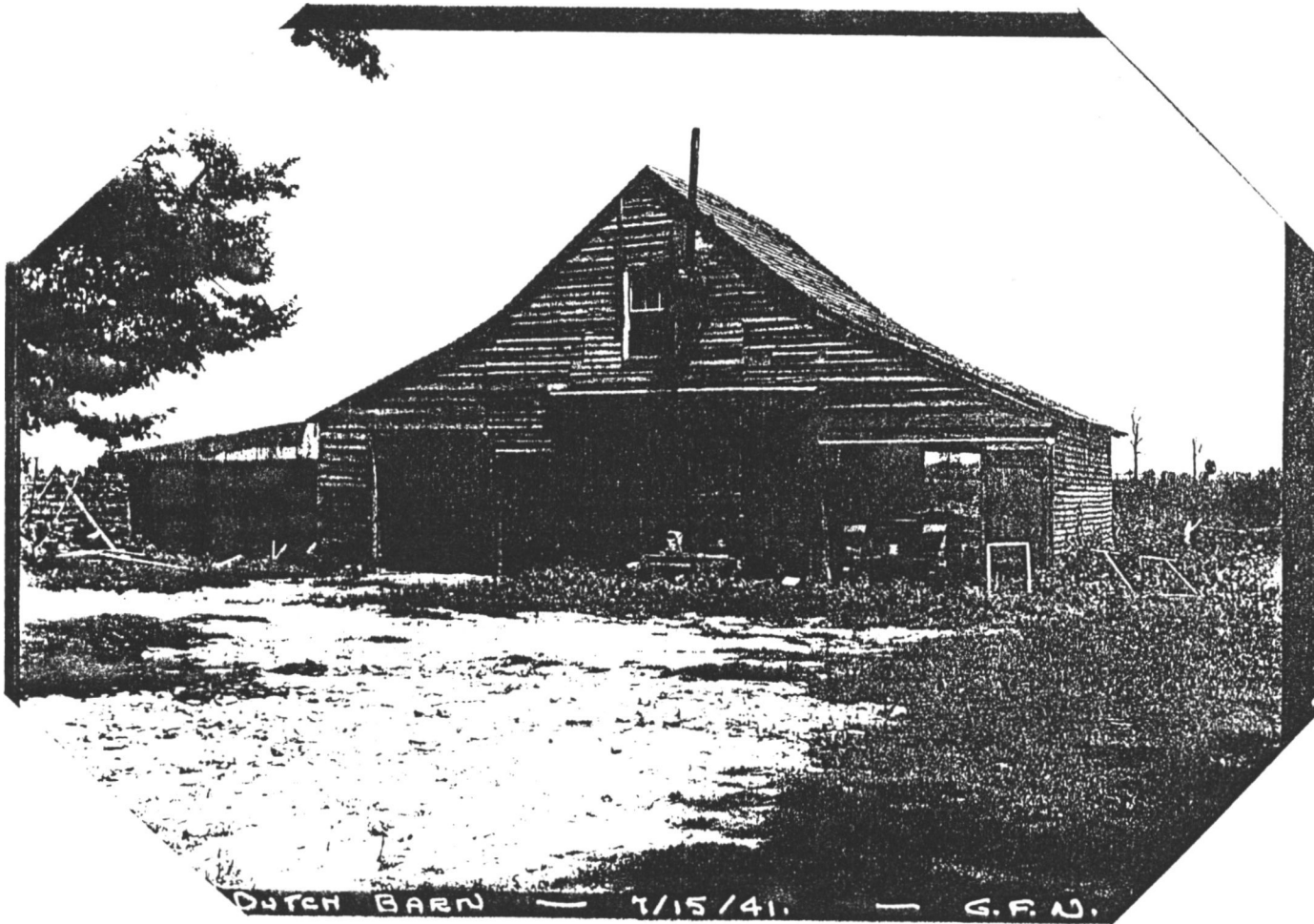
Historic American Buildings Survey
George Neuschafer, Photographer

July 15, 1941

INTERIOR - MANTEL DETAIL - 1ST FLOOR

HABS - 1941

Abel Nicholson House
Elsinboro Township
Salem County, New Jersey



HABS-NJ-305

Historic American Buildings Survey
George Neuschafer, Photographer

July 15, 1941

EXTERIOR - DUTCH BARN

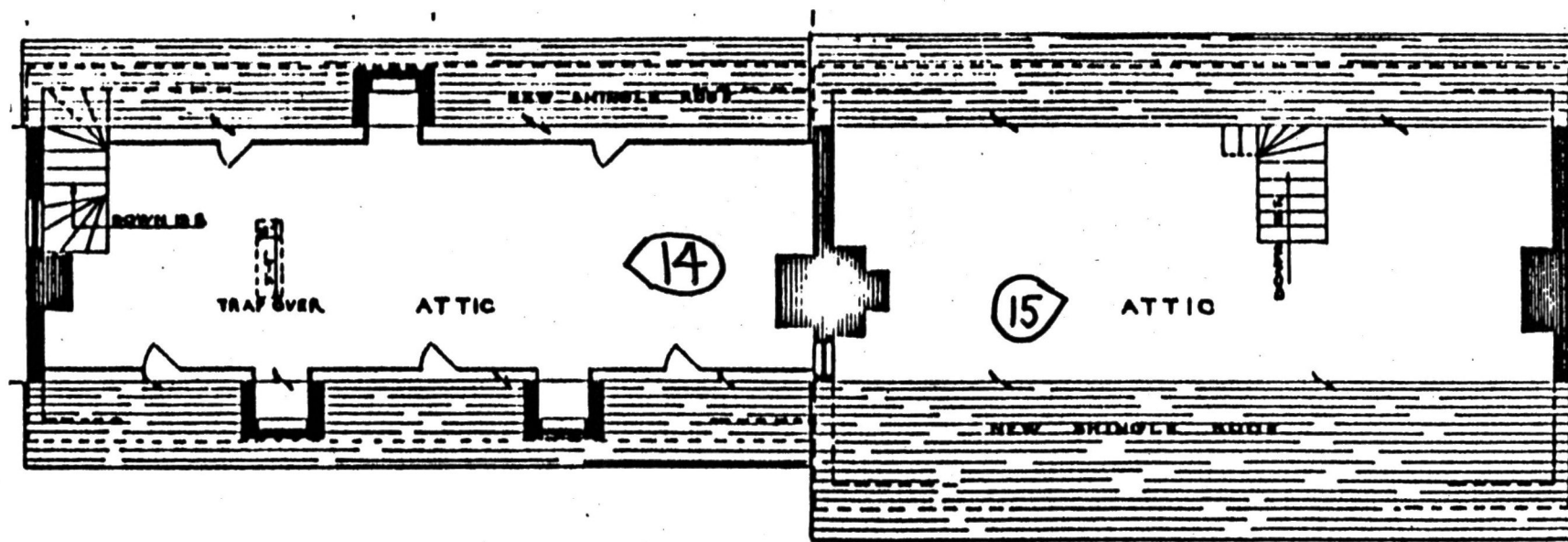
HABS-1941

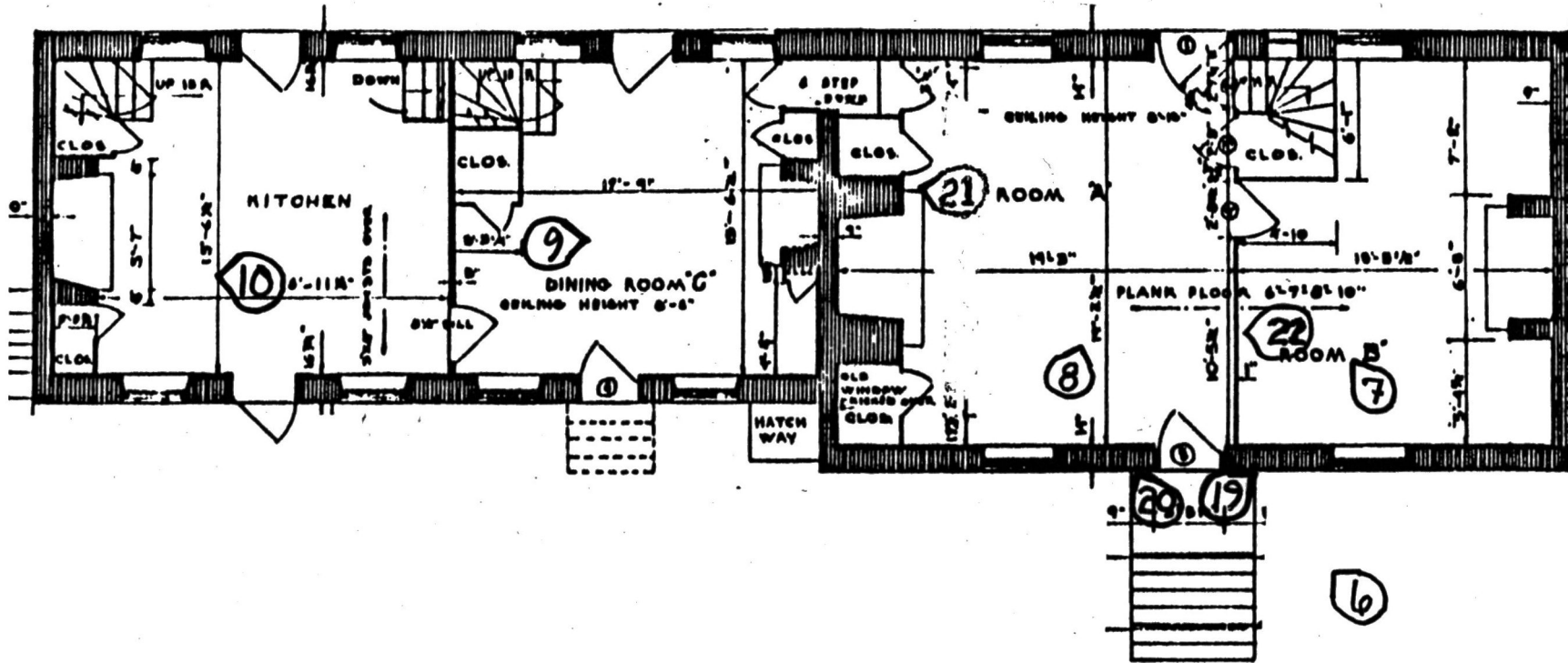
HABS
NJ
NEUSCHAFER,
3A-1

Abel Nicholson House

NJ Salem Co.

Photo Locations - Attic Plan





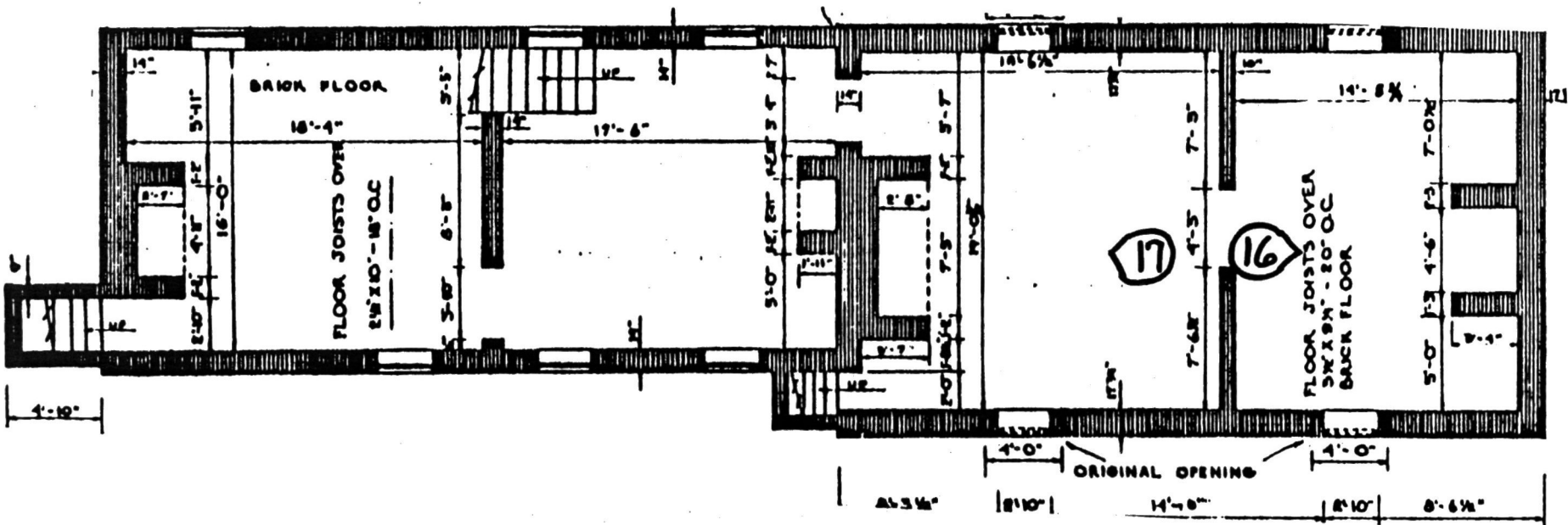
Abel Nicholson House
 NJ Salem Co.

Photo Locations - First Floor Plan

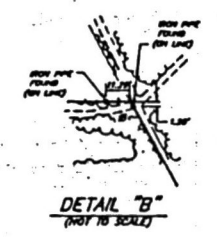
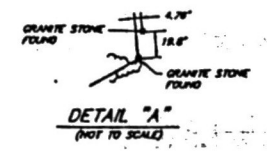
Abel Nicholson House

NJ Salem Co.

Photo Locations - Cellar Plan



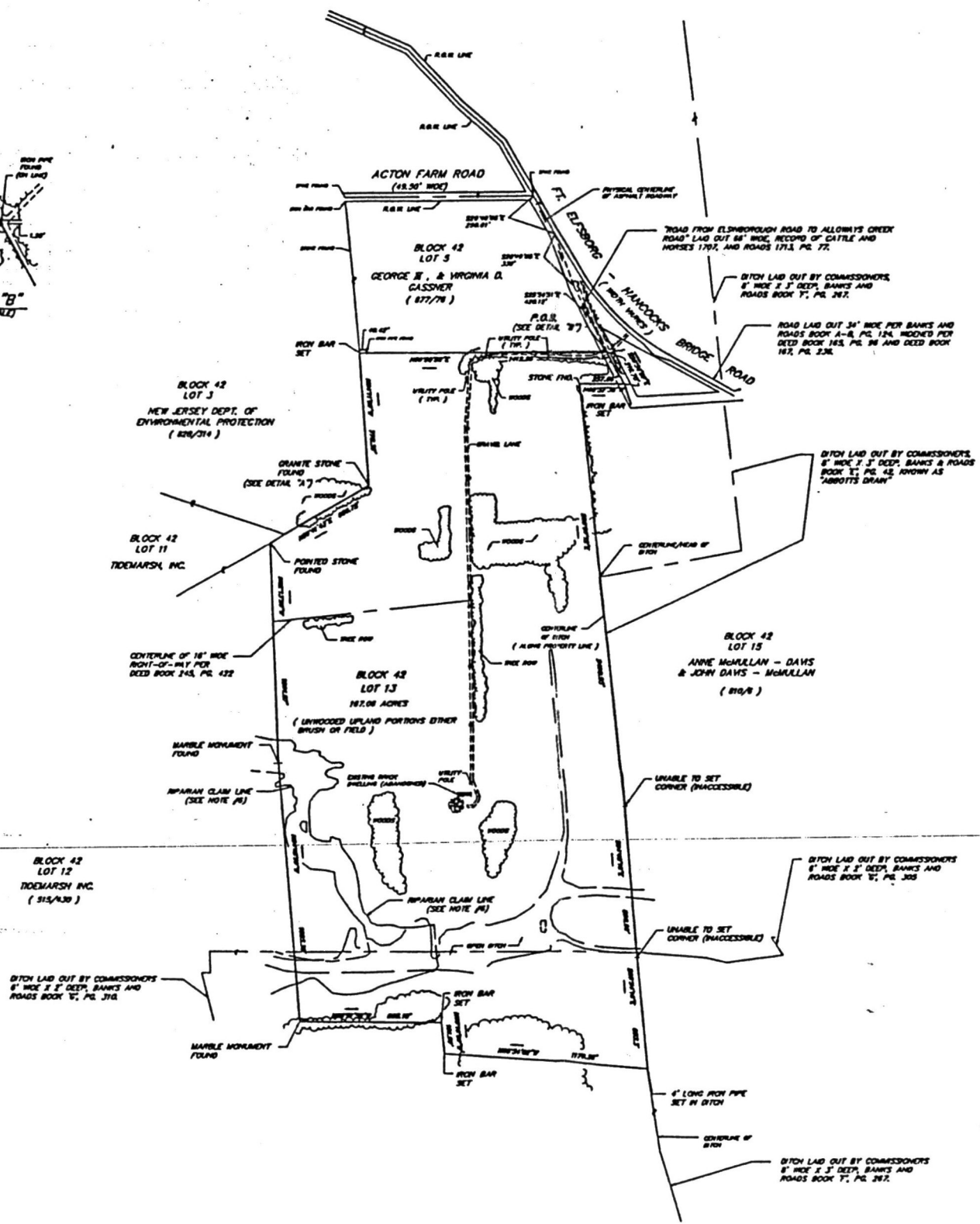
ABEL NICHOLSON (1722) PLOT MAP 1995



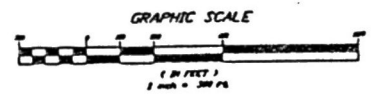
U.S. GEOLOGICAL SURVEY MAP
SCALE: 1" = 2000'
PART OF THE "SALEM, N.J." QUADRANGLE MAP

GENERAL NOTES

1. THE MAP REFERENCE: SHEET 13, BLOCK 42, LOT 13
 2. DEED REFERENCED: BOOK 481, PAGE 404, DATED 12-29-1963
 3. TOTAL AREA: 167.06 ACRES
 4. SUBJECT TO EASEMENT TO NEW JERSEY BELL TELEPHONE COMPANY FOR DEED BOOK 318, PG. 79 (UTILITY POLES AS SHOWN ON PLANS)
 5. SUBJECT TO EASEMENT TO ATLANTIC CITY ELECTRIC COMPANY AND PUBLIC SERVICE ELECTRIC AND GAS COMPANY FOR DEED BOOK 473, PG. 217 (CONDUIT, EASEMENTS, NOT PLANTABLE)
 6. SUBJECT TO APPLICABLE CLAIM TO STATE OF NEW JERSEY DEPARTMENT OF ENVIRONMENTAL PROTECTION AREAS NOW OR FORMERLY BELOW MEAN HIGH WATER, ABBOTTS MEADOW SALEM, MAP # 143-1764
 7. SUBJECT TO TERMS AND CONDITIONS OF WETLANDS ACT N.J.S.A. 13-94-1 FOR DEED BOOK 362, PG. 244 AND SHOWN ON WETLANDS MAP #143-1764 ABBOTTS MEADOW SALEM AND MAP #153-1764 BLACK STONY EAST.
 8. ALLER, HANCOCK ECONOMIC GROWTH FOR PUBLIC SERVICE ELECTRIC AND GAS ESTUARY ENHANCEMENT PROGRAM CONTROL BATH SHEETS STATION 30-74 AND STATION 30-76
- TO: PUBLIC SERVICE ELECTRIC & GAS COMPANY, THE FRANCIS CORPORATION & CONTINENTAL ELECTRIC COMPANY - IN CONSIDERATION OF THE FEE PAID FOR MAKING THIS SURVEY, I HEREBY CERTIFY TO THE BEST OF MY KNOWLEDGE, INFORMATION, BELIEF AND PROFESSIONAL OPINION, THAT THIS SURVEY IS ACCURATE (EXCEPT FOR SUCH APPEARANCES OF EASEMENTS, IF ANY, THAT MAY BE LOCATED BELOW THE SURFACE OF THE LAND AND WHICH ARE NOT WETLANDS). THIS CERTIFICATION IS MADE ONLY TO HONORABLE PARTIES FOR THE PURCHASE AND/OR NOTICE OF THE HONORABLE BELIEF AND PROFESSIONAL OPINION OF THE SURVEYOR FOR USE OF THIS SURVEY FOR ANY OTHER PURPOSE INCLUDING, BUT NOT LIMITED TO, THE USE OF THIS SURVEY FOR A SURVEY, AFFRANCH, RESALE OF PROPERTY, OR USE BY ANY OTHER PERSON NOT NAMED BY THIS CERTIFICATION EITHER DIRECTLY OR INDIRECTLY.
- ONLY COPIES FROM THE ORIGINAL MAP OF THIS PLAT, CLEARLY MARKED WITH THE LAND SURVEYOR'S EMPRESSED SEAL, SHALL BE CONSIDERED TO BE VALID COPIES.
- THIS PLAT DOES NOT SHOW OR INTEND TO SHOW ANY UNRECORDED EASEMENTS OR RIGHTS-OF-WAY.



Abel Nicholson House
Elsinboro Township
Salem County, NJ



THIS PLAT BASED ON CONTINENTAL FIDELITY INSURANCE AGENCY, INC. APPLICATION NO. 4428-133 DATED MAY 8, 1993 FOR THE FRANCIS CORPORATION AND/OR ITS EMPLOYEES ARE NOT LIABLE FOR ERRORS WITHIN OR OMISSIONS FROM SAID DOCUMENTS.

NO FRESHWATER WETLANDS, AS DEFINED BY THE NEW JERSEY FRESHWATER WETLANDS PROTECTION ACT (N.J.S.A. 13-96-1), ARE INTENDED TO BE SHOWN OR DELINEATED AS PART OF THIS SURVEY.

NO.	DATE	DESCRIPTION	BY
1	8-16-95	SURVEY PREPARED FOR PUBLIC SERVICE ELECTRIC & GAS COMPANY	Albert A. Fralinger, Jr., P.A.

Albert A. Fralinger, Jr., P.A.
Professional Engineer, License No. 1242
Professional Land Surveyor, License No. 1242

UNITED STATES DEPARTMENT OF THE INTERIOR
NATIONAL PARK SERVICE

NATIONAL REGISTER OF HISTORIC PLACES
EVALUATION/RETURN SHEET

REQUESTED ACTION: NOMINATION

PROPERTY NAME: Nicholson, Abel, House

MULTIPLE NAME:

STATE & COUNTY: NEW JERSEY, Salem

DATE RECEIVED: 12/04/96 DATE OF PENDING LIST: 12/17/96
DATE OF 16TH DAY: 1/02/97 DATE OF 45TH DAY: 1/18/97
DATE OF WEEKLY LIST:

REFERENCE NUMBER: 96001548

NOMINATOR: STATE

REASONS FOR REVIEW:

APPEAL: Y DATA PROBLEM: N LANDSCAPE: N LESS THAN 50 YEARS: N
OTHER: N PDIL: N PERIOD: N PROGRAM UNAPPROVED: N
REQUEST: N SAMPLE: N SLR DRAFT: NATIONAL: N

COMMENT WAIVER: N

___ACCEPT ___RETURN ___REJECT _____DATE

ABSTRACT/SUMMARY COMMENTS:

RECOM./CRITERIA Accept B&C

REVIEWER Patrick Andrew

DISCIPLINE Historian

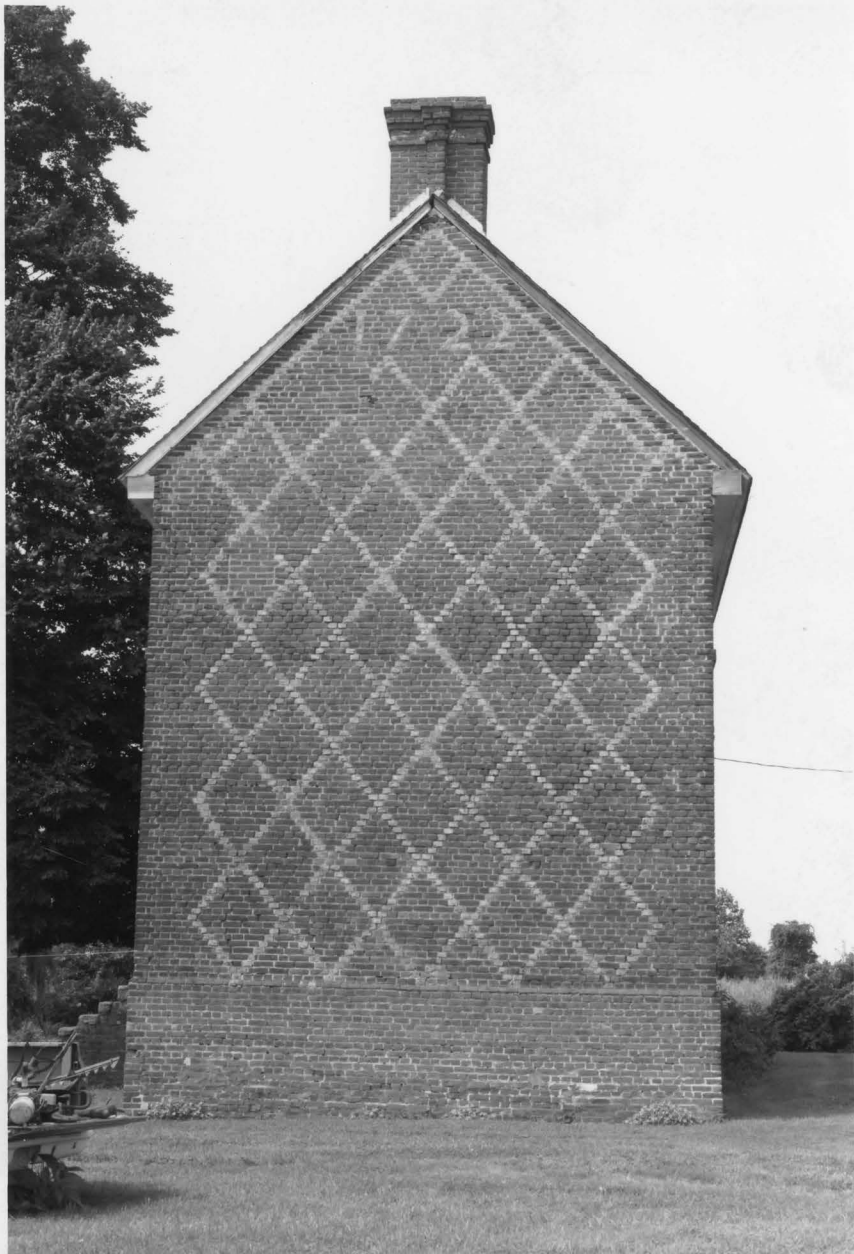
TELEPHONE _____

DATE 1/16/97

DOCUMENTATION see attached comments Y/N see attached

SLR
Andrew

Y/N



NS, SALEM CO., ABEL NICHOLSON HSE, 1 OF 22



MS. SALEM CO., ABEL NICHOLSON HSE., 20522



NJ, SALEM CO. ABEL NICHOLSON HSE., 3 of 22



NS, SALEM CO., ABEL NICHOLSON HSE., 4 OF 22



MS, SALEM CO., ABEL NICHOLSON HSE., 500 22



NS, SALEM CO., ABEL NICHOLSON HSE., 6 OF 22



NS, SALEM CO., ABEL NICHOLSON HSE., 7 OF 22



NT, SALEM CO. ABEL NICHOLSON HSE., 8 OF 22



NS, SALEM CO., ABEL NICHOLSON HSE., 9 OF 22



NJ, SALEM CO., ABEL NICHOLSON HSE., 100F22



N3, SALEM CO., ABEL NICHOLSON HSE., 11 OR 22



NS SALEM CO., ABEL NICHOLSON HSE., 12 OF 22



NS, SALEM CO., ABEL NICHOLSON HSE., 13 OF 22



NS, SALEM CO., ABEL NICHOLSON HSE., 14 OF 22



NS., SALEM CO., ABEL NICHOLSON HSE., 15 OF 22



NJ., SALEM CO., ABEL NICHOLSON HSE., 16 of 22



NS, JALEM CO., ABEL NICHOLSON HSE., 17 OF 22



NS, SALEM CO., ABEL NICHOLSON HSE., 18 OF 22



NJ., SALEM CO., ABEL NICHOLSON HSE., 19 OF 22



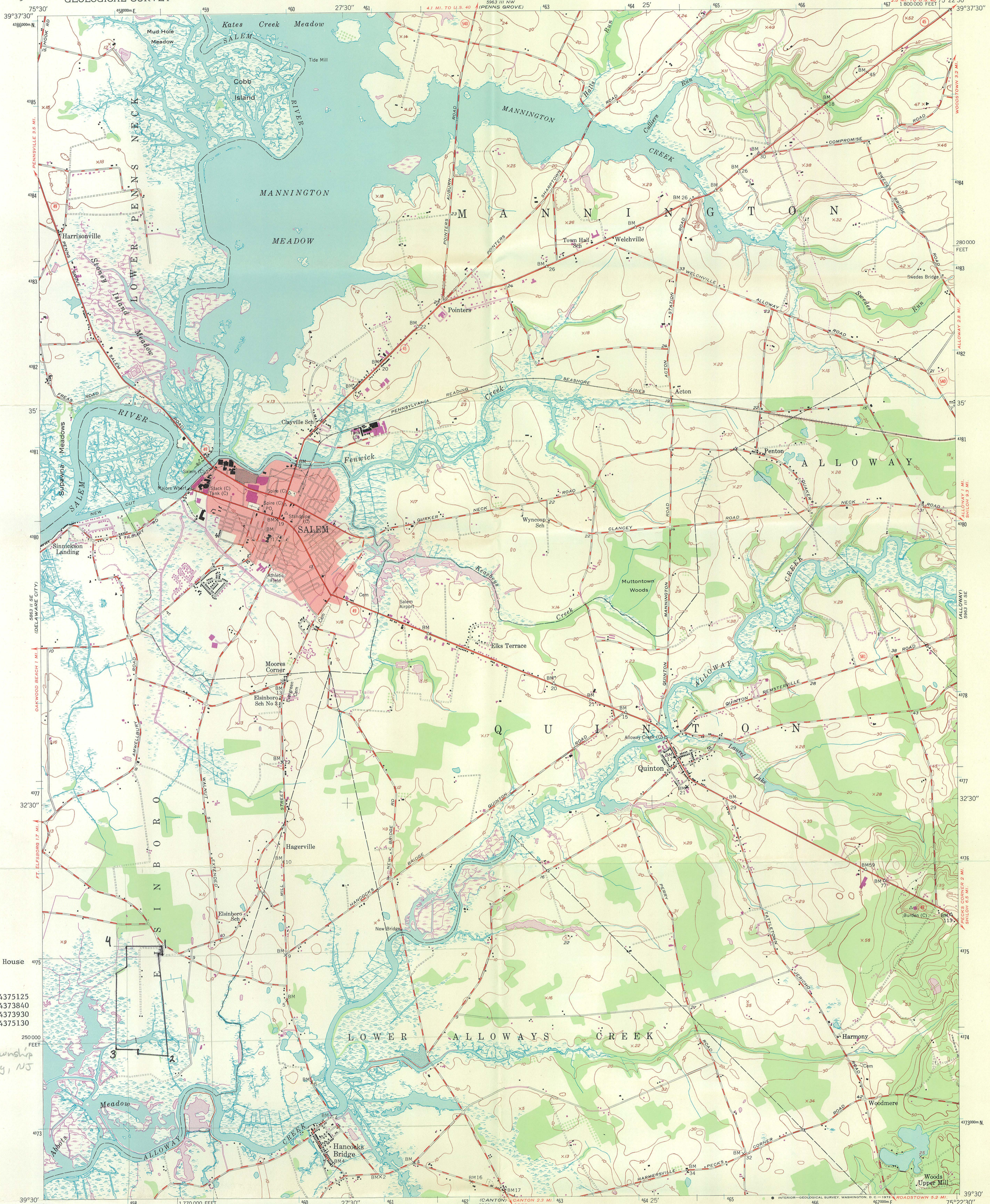
NS, SALEM CO., ABEL NICHOLSON HSE., 200-22



NS, SALEM CO., ABEL NICHOLSON HSE., 21 OF 22



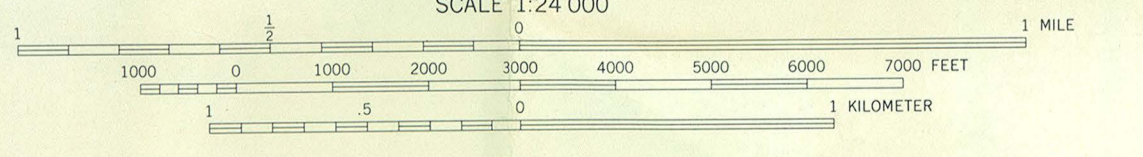
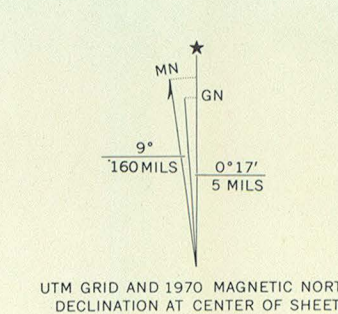
MS, SALEM CO., ABEL NICHOLSON HSE, 22 OF 22



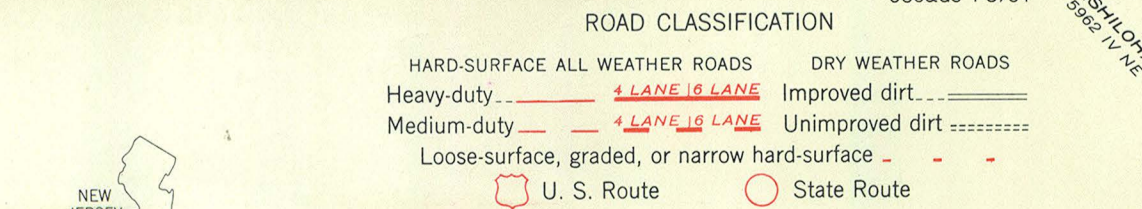
Abel Nicholson House
UTM references
1. 18 458420 4375125
2. 18 458470 4373840
3. 18 457850 4373930
4. 18 457860 4375130

Elsinboro Township
Salem County, NJ

Mapped by U. S. Coast & Geodetic Survey
Edited and published by the Geological Survey
Control by USC&GS(C) and New Jersey Geodetic Survey
Culture and drainage in part compiled from
aerial photographs taken 1946
Topography by plane-table methods 1947. Field check 1948
Polyconic projection. 1927 North American datum
10,000-foot grid based on New Jersey coordinate system
No distinction is made between dwellings, barns,
commercial and industrial buildings
Red tint indicates area in which only
landmark buildings are shown
Unchecked elevations are shown in brown
1000-meter Universal Transverse Mercator grid ticks,
zone 18, shown in blue



CONTOUR INTERVAL 10 FEET
DATUM IS MEAN SEA LEVEL
SHORELINE SHOWN REPRESENTS THE APPROXIMATE LINE OF MEAN HIGH WATER
THE AVERAGE RANGE OF TIDE IS APPROXIMATELY 5 FEET
THIS MAP COMPLIES WITH NATIONAL MAP ACCURACY STANDARDS
FOR SALE BY U. S. GEOLOGICAL SURVEY, WASHINGTON, D. C. 20242
A FOLDER DESCRIBING TOPOGRAPHIC MAPS AND SYMBOLS IS AVAILABLE ON REQUEST



ROAD CLASSIFICATION
 HARD-SURFACE ALL WEATHER ROADS DRY WEATHER ROADS
 Heavy-duty 4 LANE 18 LANE Improved dirt
 Medium-duty 4 LANE 18 LANE Unimproved dirt
 Loose-surface, graded, or narrow hard-surface
 U. S. Route State Route

SALEM, N. J.
 N3930-W7522.5/7.5
 1948
 PHOTOREVISED 1970
 AMS 5963 III SW-SERIES V822

174508 (BRIDGE)
5963 III SW



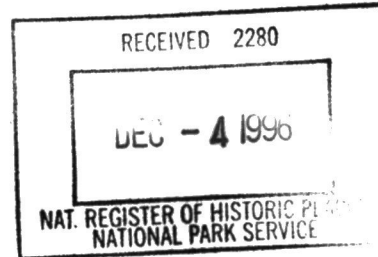
State of New Jersey

Christine Todd Whitman
Governor

Department of Environmental Protection
NATURAL AND HISTORIC RESOURCES

Robert C. Shinn, Jr.
Commissioner

CN-404
TRENTON, N.J. 08625-0404
TEL: (609) 292-3541
FAX: (609) 984-0836



November 27, 1996

Ms. Carol Shull
Chief of Registration
National Register of Historic Places
National Park Service
Department of the Interior
Washington, D.C. 20240

Dear Ms. Shull:

I am pleased to nominate the Abel Nicholson House, Township of Elsinboro, Salem County, New Jersey to the National Register.

This application has received majority approval from the New Jersey State Review Board for Historic Sites. All procedures were followed in accordance with regulations published in the Federal Register.

Should you want any further information concerning this application, please feel free to contact Mr. Terry Karschner, Supervising Historic Preservation Specialist with the New Jersey Historic Preservation Office, CN 404, Trenton, New Jersey 08625 or call him at (609) 292-2023.

Sincerely,

James F. Hall
Deputy State Historic
Preservation Officer

PROPERTY NAME: Nicholson, Abel, House

OTHER NAME/ NOT APPLICABLE
SITE No. :

MULTIPLE NAME: NOT APPLICABLE

ADDRESS/ Jct. of Hancocks Br. and Ft. Elfsborg Rd., Elfinsboro Townsh
BOUNDARY : ip

CITY: Salem VICINITY
COUNTY: Salem STATE: NEW JERSEY

Restricted Location Information: Owner: PRIVATE Resource Type: BUILDING

Contributing Noncontributing

Buildings 1 0
Sites 0 0
Structures 0 0
Objects 0 0

Nomination/Determination Type: SINGLE RESOURCE

Nominator: STATE GOVERNMENT Nominator Name:
NOT APPLICABLE

Federal NOT APPLICABLE
Agency:

NPS Park Name: NOT APPLICABLE

Certification: DATE RECEIVED/PENDING NOMINATION Date: 12/04/96

Other NOT APPLICABLE
Certification:

Historic DOMESTIC
Functions:

Historic SINGLE DWELLING
Subfunctions

Current VACANT/NOT IN USE
Functions:

Current NOT APPLICABLE
Subfunctions:

Level of NATIONAL Applicable Criteria: PERSON
Significance: ARCHITECTURE/ENGINEERING

Significant Person's Name: Nicholson, Abel

Criteria Considerations: NOT APPLICABLE

Area of Significance: ARCHITECTURE
EXPLORATION/SETTLEMENT

Periods of: 1700-1749 1750-1799 Circa: Specific Sig. Years:
Significance: -----
1722

Architect/Builder/Engineer/ Cultural Affiliation:
Designer: NOT APPLICABLE

Mason, John

Other Documentation:

NOT APPLICABLE

HABS No. N/A HAER No. N/A

Architectural GEORGIAN
Styles:

Describe Other Style NOT APPLICABLE

Foundation Materials: BRICK
Wall Materials: BRICK
Roof Materials: ASPHALT
Other Materials: STONE

Acreage: 167.0

UTM Zone Easting Northing Zone Easting Northing
Coordinates: 18/ /4 58 420/ /43 75 125 18/ /4 58 470/ /43 73 840
18/ /4 57 850/ /43 73 930 18/ /4 57 860/ /43 75 130

Nicholson, Abel and Mary, House

(Resource Name)

96001548

(Reference Number[s])

11/123/105

(Date form completed)

Salem

(County)

NJ

(State)

J. Joebel

(Completed by)

STATUS:

- 1. MISSING
- 2. REMOVED/DEMOLISHED
- 3. NHL
- 4. TR
- 5. MRA
- 6. OVER-SIZED
- 7. NPS - UNDOCUMENTED
- 8. DOE - OWNER OBJECTION
- 9. RESTRICTED

EXPLANATION:

1. Missing Status: Entire Folder (); Nomination (); Map(s) (); Photos ()
Available on: Microfiche (); Optical Disk ()

2. _____
(Cause for removal)

_____/_____/_____
(Date Removed)

3. _____
(NHL Name, if different than NRHP Name)

_____/_____/_____
(Date Designated)

4. _____
(If multi-state/county TR, state/county where filed and location)

(TR or MRA Name)

5. _____
(If multi-state/county MRA, state/county where filed and location)

6. _____
(Location of oversize file)

7. _____
(Current source of partial documentation)

_____/_____/_____
(Target Date)

COMMENTS: _____
(Where found, or source of replacement)

_____/_____/_____
(Date Found/Replaced)