

UNITED STATES DEPARTMENT OF THE INTERIOR
NATIONAL PARK SERVICE

**NATIONAL REGISTER OF HISTORIC PLACES
INVENTORY -- NOMINATION FORM**

FOR NPS USE ONLY	
RECEIVED	MAR 9 1984
DATE ENTERED	

SEE INSTRUCTIONS IN *HOW TO COMPLETE NATIONAL REGISTER FORMS*
TYPE ALL ENTRIES -- COMPLETE APPLICABLE SECTIONS

1 NAME

HISTORIC Rockhill Agricultural Historic District

AND/OR COMMON

2 LOCATION

N of Pittstown on SR 513

STREET & NUMBER

N/A

CITY, TOWN

Pittstown, N.J.
~~Union and Franklin Townships~~ *N/A* VICINITY OF

N/A NOT FOR PUBLICATION

CONGRESSIONAL DISTRICT

13th

STATE

New Jersey

CODE

34

COUNTY

Hunterdon

CODE

019

3 CLASSIFICATION

CATEGORY

- DISTRICT
- BUILDING(S)
- STRUCTURE
- SITE
- OBJECT

OWNERSHIP

- PUBLIC
- PRIVATE
- BOTH
- PUBLIC ACQUISITION**
- IN PROCESS
- BEING CONSIDERED

N/A

STATUS

- OCCUPIED
- UNOCCUPIED
- WORK IN PROGRESS
- ACCESSIBLE**
- YES: RESTRICTED
- YES: UNRESTRICTED
- NO

PRESENT USE

- AGRICULTURE
- COMMERCIAL
- EDUCATIONAL
- ENTERTAINMENT
- GOVERNMENT
- INDUSTRIAL
- MILITARY
- MUSEUM
- PARK
- PRIVATE RESIDENCE
- RELIGIOUS
- SCIENTIFIC
- TRANSPORTATION
- OTHER:

4 OWNER OF PROPERTY

NAME

Multiple

STREET & NUMBER

CITY, TOWN

N/A VICINITY OF

STATE

5 LOCATION OF LEGAL DESCRIPTION

COURTHOUSE,
REGISTRY OF DEEDS, ETC.

Hunterdon County Hall of Records

STREET & NUMBER

Main Street

CITY, TOWN

Flemington

STATE

New Jersey

6 REPRESENTATION IN EXISTING SURVEYS

TITLE

New Jersey Historic Sites Inventory

has this property been determined eligible: yes

no

DATE

1977

FEDERAL STATE COUNTY LOCAL

DEPOSITORY FOR
SURVEY RECORDS

Office of Historic Preservation, Dept. of Environmental Protection

CITY, TOWN

Trenton

STATE

New Jersey

7 DESCRIPTION

CONDITION

EXCELLENT
 GOOD
 FAIR

DETERIORATED
 RUINS
 UNEXPOSED

CHECK ONE

UNALTERED
 ALTERED

CHECK ONE

ORIGINAL SITE
 MOVED DATE _____

DESCRIBE THE PRESENT AND ORIGINAL (IF KNOWN) PHYSICAL APPEARANCE

Rockhill Agricultural Historic District is located in the southern triangular portion of Union Township in Hunterdon County. The area is basically farmland with small pockets of forests. The elevation ranges from about 520 feet in the northernmost section to 300 feet at Cakepoulin Creek at Kingtown. The change in elevation is gradual and provides for good drainage in this farm region.

There are some 28 properties in the district. Five farmhouses predate the American Revolution, three were established during the Federal period (ca. 1790-1810), six were built from 1820-40, two are mid-19th century, the church was built in 1870, two later tenant houses were constructed sometime in the late 19th century and seven small cottages are modern. The remaining two properties are empty--either used as farmland or undeveloped.

Union Township was formed from the south part of Bethlehem Township in 1852. Two names were initially proposed for the township--Union, the name of the furnace formerly at its northeast part, and Rockhill, in honor of the families who settled the extreme south part of the township.

The area is sufficiently undulating, well-drained, and with virtually no marshland. The land is good for tilling and produced large yields of grain and provided good pastureland for grazing throughout its history.

1. The Bethlehem United Presbyterian Church, built in 1870, is located in the N.W. Corner of Race Street and Rt. 513 in the Grandin area. This is a frame, 1 story, gable roofed structure, 5 bays deep on a raised stone ground floor, with a projecting central tower, that has an asbestos roof, overhanging eaves, a returned dentil cornice, clapboard siding with wide corner boards and imbricated shingles in alternating bands on the front facade and tower. There are segmental arched windows on both sides with simple hood moulding, double hung multi-pane sash and louvered blinds. There are 12/12 sash on the ground level and one round arched window on each side of the central tower. The tower is especially ornate with Italianate details and has a segmental arch entry with elaborate hood moulding. The entrance vestibule has double doors with widely moulded panel and round arched windows above. The square belfry has tracery louvers on all four sides, corner pilasters, dentil cornice with rounded arches over louvers, and a concave over convex curve in the spire, topped by a large finial and weathervane. A modern frame wing and a new church school blend in with the older structure. The church, the last of three churches on the same site, is in a hollow below a new county road with large trees. A stonewalled grave yard to the south of old Grandin Road contains the graves of many prominent early citizens. Block 22, lot 12.

UNITED STATES DEPARTMENT OF THE INTERIOR
NATIONAL PARK SERVICE

**NATIONAL REGISTER OF HISTORIC PLACES
INVENTORY -- NOMINATION FORM**

FOR NPS USE ONLY

RECEIVED

DATE ENTERED

Rockhill Agricultural Historic District
Union Township, Hunterdon County, NJ

CONTINUATION SHEET

ITEM NUMBER 7 PAGE 1

DESCRIPTION (Continued)

2. Crawford-Wilson Tavern is located on Rt. 513 and Race Street opposite the Bethlehem Church. In the S.W. corner, the area is locally known as Grandin. The structure is random fieldstone, 2 1/2 story and gable roof and pent with three bays and the center hall deep form, on a bank cellar. It has flush gable eaves and cornice on both gables forming pent roofs. The 6/6 sash, plain trim, side light and transomed central entry with shed roof porch (clipped ends) round posts and wooden deck completes the unit. The area under the north end is a bank cellar entry. The stone is coursed rubble with rough square quoins on a bank cellar. There is a stone chimney in each gable with brick stacks. The date stone in the main building is 1765. The braced frame, stone foundation, two story, gable roofed dwelling across the lane has five bays and a narrow I form; a three bay with a two bay extension to the south. There is a slate roof, flush gable eaves and box cornice; 2/2 sash plain trim and clapboard siding with two small gable roofed entry stoops. No chimney stacks are apparent.

The property contains a 19th century wagon house which is a braced frame structure with shed-roofed leanto on each side; the stable is a frame two story structure, low and narrow, with a shed leanto on the west side, a hoist overhead and large door on the north gable. It has a five bay open arcade on the east side with clipped corners and batten doors above clapboard siding. The early 20th century dairy barn is a frame gambrel roofed structure with batten doors and clapboard siding. All of the structures are sound and well maintained. Block 25, lot 18 C.

- * 3. Edmund Frey Property. Empty lot. 26 acres. Block 25, lot 16.
4. Milky Way Farm is located on Rt. 513 and Cooks Cross Road on the N.W. corner. This is a stone 2 1/2 story gable roofed dwelling built in 1850. Five bays long, it has a center hall form with a stone and frame "ell" off the gable ends; slate roof and overhanging eaves. Windows are 6/6 sash with louvered blinds and recessed three panel shutters plus side light and transomed front entry, with flat roofed stoops, wide entablatures, octagonal posts with moulded capitals and bases complete the exterior. The second entry is on the south gable end. The shed roof of the rear porch has square posts and a balustrade railing. The front wall is constructed of coursed fieldstone with flat lintels and key blocks; random fieldstone and some coursed rubble on gables and rear. There is a full cellar divided in four by brick walls. The two chimneys in each gable have large brick stacks with corbelled drips.

* subdivided property removed from nomination.

UNITED STATES DEPARTMENT OF THE INTERIOR
NATIONAL PARK SERVICE

**NATIONAL REGISTER OF HISTORIC PLACES
INVENTORY -- NOMINATION FORM**

FOR NPS USE ONLY

RECEIVED

DATE ENTERED

Rockhill Agricultural Historic District
Union Township, Hunterdon County, NJ

CONTINUATION SHEET

ITEM NUMBER 7 PAGE 2

DESCRIPTION (Continued)

The rear ell, a detached kitchen/woodshed/carriage house, is a two story frame/stone structure with gable roof. It has clapboard siding, 6/6 sash, two round arched openings on lower level of the south side. There is a chimney in the gable end of the ell with a brick stack. The spring milk house is a stone 1 1/2 story, gable roofed structure, with coursed rubble walls, slate roof and flush eaves. The 6/6 sash have batten shutters on strap hinges and there is a small batten door on the north wall. This structure has a shed addition. There is a small square frame wagon house 1 1/2 stories high.

The barn is two part English form frame, two story, gable roofed with clapboard and vertical siding and small paned sash windows. The silo has batten siding. There is a stone walled corral used for breeding purposes prior to the revolution. This is an 18th century farm (the foundation of the original farmhouse remains; date stone 1763) with a 19th century dwelling c. 1854. They are all well maintained. The ruins of a limestone kiln are on the property. Block 25, lot 35.

5. Grove Farm (Shipley) is located on Rt. 579 and Cooks Road on the S.W. corner. There is a fine alley of maples leading to the late 18th century 2 1/2 story frame house. This clapboard dwelling has four bays with 6/6 sash, a porch with square columns to the north and a two story two bay addition on the east gable. There are three chimneys, one in each gable end in the gable end of the addition. To the southeast is a two room one story stone kitchen with a fireplace and oven in the south gable end. To the southwest is a 1 1/2 story, two bay frame carriage house. These three structures form a U shaped courtyard even though they are not attached. There are three large frame barns and two 19th century tenant houses built side by side. This 18th century house has a commanding view of the countryside. The farm is still being worked. Block 30, lot 1.
6. Kings Manor is located on Rt. 513 on west side in an area locally known as Kingtown.
 - A. The Manor House (Block 30, lot 4) was built around 1810 and has a four bay I form with a three bay deep side hall unit to its north, and two bay side hall unit to its north, and a two bay ell on the south rear. All three sections are two stories, with gable ends and slate roofs. They have flush gable eaves with box

UNITED STATES DEPARTMENT OF THE INTERIOR
NATIONAL PARK SERVICE

**NATIONAL REGISTER OF HISTORIC PLACES
INVENTORY -- NOMINATION FORM**

FOR NPS USE ONLY

RECEIVED

DATE ENTERED

Rockhill Agricultural Historic District
Union Township, Hunterdon County, NJ

CONTINUATION SHEET

ITEM NUMBER 7

PAGE 3

DESCRIPTION (Continued)

cornices. There are 1/1, 6/6 and 9/6 sash, plain trim with louvered blinds and raised four panel shutters. There is a simple entry in the stair hall unit with a small gable roofed hood on consoles and a shed roofed rear porch. There are four chimneys, one on the south gable, two in the north gable and one on the west gable of the ell. They are stone with brick stacks and corbelled drips. Built in three parts of coursed stone rubble on the gables and rear, rough square corner quoins, and random ashlar on the front. There are finely cut splayed lintels with projecting key blocks.

- B. The early 19th century Grist Mill (Franklin Township--across road) (Block 25, lot 5) is built into a bank; stone 2 1/2 story structure, to the rear; 1 1/2 stories in front. It has coursed rubble walls with rough square quoins and has been converted into a dwelling.
- C. Tenant House (Block 30, lot 3) is a five bay narrow, two story, center hall, braced frame structure. It has flush gable eaves, box cornice, 1/1 sash, louvered shutters and a shed roofed stoop with square posts. It has two chimneys with high brick stacks and plastered exposed chimney.
- D. Tenant House (Block 30, lot 3A) is a typical braced frame I house plus one story frame addition to north gable (modern). The house has three bays and the two chimney stacks in each have been removed.
- E. Tenant House (Block 30, lot 2) is a wood frame dwelling in two sections. One is a 2 1/2 story four bay unit with a 1 1/2 story two bay unit added to the north gable end. The foundation is stone and the plan is rectangular. There are three chimneys; one centered in each gable of the mainblock and the third in the north gable of 1 1/2 story unit. The third chimney has exposed brick chimney base.

All the preceding structures appear to be sound and well maintained. The Manor House and the three frame tenant houses have little altered outside with the exception of some sash and doors. The grist mill retains its stone work but has been entirely rebuilt. The Manor House and mill and the tenant houses are early 19th century.

**United States Department of the Interior
Heritage Conservation and Recreation Service**

**National Register of Historic Places
Inventory—Nomination Form**

Rockhill Agricultural Historic District

Continuation sheet Union Twp., Hunterdon Co., NJ Item number 7

For HCERS use only
received
date entered

Page 4

DESCRIPTION (Continued)

7. Taylor Homestead is located on the Pittstown-Jutland Road. It is a two bay, main block, deep form frame structure with a narrower two bay wing to the east. There is an enclosed shed roof porch in front of the narrower unit and a leanto on the east gable of this part. It has flush walls and box cornice with a wide entablature. There are two chimneys, one centered in each gable. There are brick stacks with corbelled drips. Small corner pilasters with moulded caps, 6/6 sash, plain trim, new louvered blinds complete the L-shaped exterior. A flat roofed entry stoop has a wide entablature and square posts. This braced frame structure has a stone foundation, the smaller wing is said to have been built first. The spring house is a stone, 1 1/2 story gable roofed structure. The three wagon houses are braced frame, stone foundations, 1 1/2 story structures. Two have leanto's on one side; they have clapboard siding and batten doors with strap hinges. The main block is early 19th century; outbuildings are first half of the 19th century. Block 30, Lot 7.
8. Olga Peters Property. Empty two acre lot. Block 29, Lot 12.
9. Linden Farms. Block 29, Lot 13. Current owners have original sheepskin deed dated 1757. The farmhouse is a two and one half story frame dwelling with a 1 1/2 story stone wing to the rear. Full length one story front porch. Gable roof. There is two story, gabled roof, five bay wood frame structure covered in clapboard with a two story, three bay stone ell at the rear on the property. The plan of the building is "L" shaped. There are also several barns and stone outbuildings.
10. Block 29, Lot 16. Modern (c.1957) 1 1/2 story Cape Cod.
11. The Rock Hill Farm c.1747 is located at the N.W. corner of 513 and 579 in Union Township. It is a stone, 2 1/2 story, gable roofed dwelling; originally a three bay with stair hall that has a two bay extension to the south creating a deep form. There is a 2 1/2 story ell at the S.W. end to the rear and a smaller frame addition added to that. The extension has flush eaves, box cornices and three gable roofed dormers with closed louvered shutters. The top floor has 6/6 sash; the ground floor 9/9 sash. The pilastered entry with triangular pediment is modern. There is a 1/2 octagonal bay at front end of the south gable. There are four chimneys, two in each gable, of stone and brick. The brick caps have been rebuilt with stone covers. The stone work is coursed and uncoursed rubble with rough square quoins and no distinctive lintels. The springhouse is a stuccoed 1 1/2 story structure with a shingle roof.

UNITED STATES DEPARTMENT OF THE INTERIOR
NATIONAL PARK SERVICE

**NATIONAL REGISTER OF HISTORIC PLACES
INVENTORY -- NOMINATION FORM**

FOR NPS USE ONLY
RECEIVED
DATE ENTERED

Rockhill Agricultural Historic District
Union Township, Hunterdon County, NJ

CONTINUATION SHEET

ITEM NUMBER 7 PAGE 5

DESCRIPTION (Continued)

The smokehouse is a small stuccoed stone gable roofed structure. The four-bay bank barn is a 5-6 bay braced frame building with leanto on east side and a silo. The house has had major alterations in the 19th and 20th century, i.e. porch removed, new entrance door, 19th century dormers and bay window. The outbuildings create a courtyard effect. Block 29, lot 17.

12. Albert Randall House. ca. 1950. Frame, 1 1/2 story modern bungalow. Two car detached garage to the rear. Block 29, lot 18.
13. Frison/Bakos Property. Empty land. Block 29, lot 19.
14. Charles Curtis House. ca. 1950. Frame, 1 1/2 story fourbay, modern bungalow with small ell to rear. Block 29, lot 20.
15. Mary Bernadine House. ca. 1950. Frame 1 1/2 story, four bay, modern bungalow. Block 29, lot 21.
16. John Barnes House. ca. 1950. Frame, 1 1/2 story, four bay, modern bungalow. Block 29, lot 22.
17. Frison House. Late 19th century 2 1/2 story, four bay frame dwelling. Block 29, lot 23.
18. J. Stires Farm. Built around 1760, this building is an unusual 2 1/2 story stone and frame dwelling built into a bank. This structure is stone in the front half and frame thereafter; the dividing point being at the roof peak. Gable end chimney. Wood frame vertical board barn on property. Block 29, lot 27.
19. W. Stires Farm (Dr. Coppolo Farm). Built around 1820, this is a frame, two story, five bay dwelling with gable end chimneys. Windows are 6/6 sash. There is a two bay, 2 1/2 story frame wing to the east and with a chimney in the gable end. Premises have two frame English form barns and stone spring and smoke houses. Huge modern silo and poultry barns. Block 29, lot 2.
20. Tenant House. Late 19th-early 20th century two story, four bay, frame dwelling. 6/6 sash. Gable and chimneys. Block 29, lot 24.

UNITED STATES DEPARTMENT OF THE INTERIOR
NATIONAL PARK SERVICE

**NATIONAL REGISTER OF HISTORIC PLACES
INVENTORY -- NOMINATION FORM**

FOR NPS USE ONLY

RECEIVED

DATE ENTERED

Rockhill Agricultural Historic District
Union Township, Hunterdon County, NJ

CONTINUATION SHEET

ITEM NUMBER 7 PAGE 6

DESCRIPTION (Continued)

21. Olin House. Early 19th century, five bay, 2 1/2 story frame I form house with a rear two story ell. Gable end chimneys. Windows are 6/6 sash. Corner pilasters. Gable roof with return. Cross gable. Block 29, lot 25A.
22. Roerig/Nieff House. ca. 1950. Frame one story, three bay modern dwelling. Asbestos shingles. Block 30, lot 10.
23. Shipley Tenant Farm. First half 19th century. Two story frame dwelling, five bay. Windows are 6/6 sash. Gable end brick chimneys. Late 19th century porch across front. Two large English form frame barns on property in poor condition. Block 30, lot 8.
24. Leo Schroedel House. ca. 1950. Frame, 1 story, two bay, dwelling with asbestos shingles. Garage in basement. Block 30, lot 9.
25. Melich Farm is located off Race Street on the first dirt road to the left going up and under the railroad underpass. This structure is a two story, four bay, side hall unit with a two bay, two story addition on the east side and a 1 1/2 story, two bay, outside kitchen with gabled dormer windows. There are three chimneys, one brick stack in the west gable of the main block with exposed fire back and one in the east gable of the addition and in the east gable of the kitchen. 6/6 sash prevail with paneled shutters on the main block. All three sections are braced frame construction with clapboard. The roof is slate. There are two 2 1/2 story barns with gable ends and vertical siding. This house was constructed between 1790 and 1810 and is set in a lovely glen with pond and some small outbuildings. Block 25, lot 18A.
- * 26. Edmund Frey Property. Undeveloped farmland. Block 25, Lot 18.

The large amount of land included in this application is to effectively portray the rural-scape of the Rockhill District and to unify the houses and outbuildings as a historical and functioning farm region.

- * Block 25, Lot 18d removed from nomination because of subdivision of property.

8 SIGNIFICANCE

PERIOD	AREAS OF SIGNIFICANCE -- CHECK AND JUSTIFY BELOW				
<input type="checkbox"/> PREHISTORIC	<input type="checkbox"/> ARCHEOLOGY-PREHISTORIC	<input type="checkbox"/> COMMUNITY PLANNING	<input type="checkbox"/> LANDSCAPE ARCHITECTURE	<input type="checkbox"/> RELIGION	
<input type="checkbox"/> 1400-1499	<input type="checkbox"/> ARCHEOLOGY-HISTORIC	<input type="checkbox"/> CONSERVATION	<input type="checkbox"/> LAW	<input type="checkbox"/> SCIENCE	
<input type="checkbox"/> 1500-1599	<input checked="" type="checkbox"/> AGRICULTURE	<input type="checkbox"/> ECONOMICS	<input type="checkbox"/> LITERATURE	<input type="checkbox"/> SCULPTURE	
<input type="checkbox"/> 1600-1699	<input type="checkbox"/> ARCHITECTURE	<input type="checkbox"/> EDUCATION	<input type="checkbox"/> MILITARY	<input type="checkbox"/> SOCIAL/HUMANITARIAN	
<input checked="" type="checkbox"/> 1700-1799	<input type="checkbox"/> ART	<input type="checkbox"/> ENGINEERING	<input type="checkbox"/> MUSIC	<input type="checkbox"/> THEATER	
<input checked="" type="checkbox"/> 1800-1899	<input type="checkbox"/> COMMERCE	<input type="checkbox"/> EXPLORATION/SETTLEMENT	<input type="checkbox"/> PHILOSOPHY	<input type="checkbox"/> TRANSPORTATION	
<input type="checkbox"/> 1900-	<input type="checkbox"/> COMMUNICATIONS	<input type="checkbox"/> INDUSTRY	<input type="checkbox"/> POLITICS/GOVERNMENT	<input type="checkbox"/> OTHER (SPECIFY)	
		<input type="checkbox"/> INVENTION			

SPECIFIC DATES

N/A

BUILDER/ARCHITECT

N/A

STATEMENT OF SIGNIFICANCE

AGRICULTURE

Rockhill Agricultural Historic District is an excellent representative example of a New Jersey farming region in the 18th and 19th centuries. With its few intrusions, Rockhill quite effectively reflects a 19th century agrarian culture.

Union Township, created in 1852 from Bethlehem Township, was settled in the mid-18th century by Edward Rockhill and family. Other early settlers included John Crawford, a tavern keeper in 1765, and James Parker, a large landowner.

Joseph King purchased Kings Manor and Mill in 1810 from Thomas Twining who in the late 18th century operated a fulling-mill and cloth-dressing establishment. This continuous operation stimulated the gradual settlement of the entire area with farmers in the 19th century.

Presently, many of those 18th and 19th century farms are still in evidence in Union Township, but the Rockhill farms are particularly well-preserved.

At the turn of the 19th century, 95% of the American population was involved with some aspect of farming. By around 1870, however, a trend towards industrialization was readily recognized by most everyone. While the farm continued to compete with manufacturing for dominance into the second quarter of the 20th century, it was quite clear that agriculture was losing ground to industrial pursuits. Consequently, by 1950, while farmsteads continued to be placed upon a romantic pedestal, fewer and fewer of them were surviving. At the current rate of attrition of the New Jersey farm only a handful will be extant by the beginning of the 21st century. Speculators, housing developments, and agribusiness have all contributed to making the farm a rare spectacle on the New Jersey landscape.

Culturally, the farmstead became a family's heritage--its lineage--with ownership passing from one generation to the next. The farm wed the farmer and his family to the soil so that during any given lifetime its owner seldom ventured beyond the scope of this limited environment, but in its parochial character established cherished legacies and traditions which varied from region to region, if not farm to farm.

9 MAJOR BIBLIOGRAPHICAL REFERENCES

Snell, James P. History of Hunterdon and Somerset Counties, New Jersey.
Philadelphia, 1881.

Boyer, Charles S. Old Inns and Taverns in West Jersey. Camden County
Historical Society, 1962.

10 GEOGRAPHICAL DATA

ACREAGE OF NOMINATED PROPERTY 1075

QUADRANGLE NAME Pittstown, NJ

QUADRANGLE SCALE 1:24,000

UTM REFERENCES

A 1,8 50,45,6,0 4,49,65,8,0

B 1,8 50,52,2,0 4,49,64,2,0

C 1,8 50,56,7,0 4,49,62,2,0

D 1,8 50,58,7,0 4,49,60,0,0

E 1,8 50,57,8,0 4,49,58,4,0

F 1,8 50,55,4,0 4,49,60,4,0

G 1,8 50,53,1,0 4,49,57,4,0

H 1,8 50,45,3,0 4,49,34,6,0

VERBAL BOUNDARY DESCRIPTION

I 1 8 5 0 4 8 2 0 4 4 9 3 4 3 0

J 1 8 5 0 4 8 0 0 4 4 9 3 1 4 0

K 1 8 5 0 4 6 6 0 4 4 9 3 1 5 0

L 1 8 5 0 4 0 9 0 4 4 9 3 4 2 0

M 1 8 5 0 3 9 0 0 4 4 9 3 2 5 0

N 1 8 5 0 4 1 6 0 4 4 9 2 8 8 0

N/A LIST ALL STATES AND COUNTIES FOR PROPERTIES OVERLAPPING STATE OR COUNTY BOUNDARIES

O 1 8 5 0 3 5 7 0 4 4 9 2 3 2 0

P 1 8 5 0 2 2 4 0 4 4 9 3 7 2 0

STATE CODE COUNTY CODE

Q 1 8 5 0 2 4 4 0 4 4 9 4 2 3 0

R 1 8 5 0 2 6 4 0 4 4 9 4 3 5 0

STATE CODE COUNTY CODE

S 1 8 5 0 2 9 2 0 4 4 9 4 3 0 0

T 1 8 5 0 3 5 5 0 4 4 9 3 6 4 0

U 1 8 5 0 3 6 0 0 4 4 9 4 9 1 0

V 1 8 5 0 4 4 8 0 4 4 9 4 9 8 0

W 1 8 5 0 4 3 5 0 4 4 9 5 6 5 0

11 FORM PREPARED BY

NAME / TITLE

Terry Karschner, Historic Preservation Specialist

ORGANIZATION

Office of Historic Preservation

DATE

February 1978

STREET & NUMBER

109 West State Street

TELEPHONE

(609) 298-2023

CITY OR TOWN

Trenton

STATE

New Jersey

12 STATE HISTORIC PRESERVATION OFFICER CERTIFICATION

THE EVALUATED SIGNIFICANCE OF THIS PROPERTY WITHIN THE STATE IS:

NATIONAL

STATE

LOCAL

As the designated State Historic Preservation Officer for the National Historic Preservation Act of 1966 (Public Law 89-665), I hereby nominate this property for inclusion in the National Register and certify that it has been evaluated according to the criteria and procedures set forth by the National Park Service.

Deputy STATE HISTORIC PRESERVATION OFFICER SIGNATURE

Terry Karschner

6-25-80

TITLE Deputy Commissioner
Department of Environmental Protection

DATE

FOR NPS USE ONLY

I HEREBY CERTIFY THAT THIS PROPERTY IS INCLUDED IN THE NATIONAL REGISTER

Entered in the
National Register

DATE 4/5/84

John Melore Byers
KEEPER OF THE NATIONAL REGISTER

DATE

ATTEST:
CHIEF OF REGISTRATION

UNITED STATES DEPARTMENT OF THE INTERIOR
NATIONAL PARK SERVICE

**NATIONAL REGISTER OF HISTORIC PLACES
INVENTORY -- NOMINATION FORM**

FOR NPS USE ONLY

RECEIVED

DATE ENTERED

Rockhill Agricultural Historic District
Union Township, Hunterdon County, NJ

CONTINUATION SHEET

ITEM NUMBER 8 PAGE 1

SIGNIFICANCE (continued)

Lest life on a farm be overly sweetened, it must be noted that it was not an easy task to work a farm, but the farm family established a firm nucleation and strength while reaching an appreciation and understanding of the delicate balance of the environment.

Outbuildings associated with farmhouse activity were constructed as extensions of the farm, each designed to perform a function or duty outside of the main house. Few outbuildings have serious architectural merit from pure aesthetics, but establish a significant, ambient relationship between the farmer and his land and also provide insight into a fast disappearing lifestyle.

The farmhouse itself is generally a vernacular dwelling, perhaps extended from one generation to another to accommodate expansion and modern technology. The more important buildings in Rockhill appear to have been fieldstone, quite reflective of the Pennsylvania German housing stock across the Delaware. The buildings do generally portray a Pennsylvania German influence--stone houses often built into a bank, and forebay bank barns--although there are other features also (English farm barns, frame construction, courtyard pastures) which suggest a vastly complex cultural derivation and evolution.

Rockhill Historic District exhibits numerous pastoral features valuable for providing the overall concept of a farm.

UNITED STATES DEPARTMENT OF THE INTERIOR
NATIONAL PARK SERVICE

**NATIONAL REGISTER OF HISTORIC PLACES
INVENTORY -- NOMINATION FORM**

FOR NPS USE ONLY
RECEIVED
DATE ENTERED

Rockhill Agricultural Historic District
Union Township, Hunterdon County, NJ

CONTINUATION SHEET

ITEM NUMBER 9

PAGE 1

BIBLIOGRAPHICAL REFERENCES (continued)

Magill, Jacob (Lequear, John W.) Traditions of Hunterdon. Flemington, New Jersey, 1956.

Hughes, Michael. Map of Union Township, Hunterdon County. 1860.

A History of Union Township. Union Township Bicentennial Committee, 1976.

Beers, F.W. Atlas of Hunterdon County, New Jersey. 1873.

**United States Department of the Interior
National Park Service**

**National Register of Historic Places
Inventory—Nomination Form**

For NPS use only
received
date entered

Rockhill Agricultural District, Union Twp., Hunterdon Co., NJ
Continuation sheet Geographical Data Item number 10

Page 1

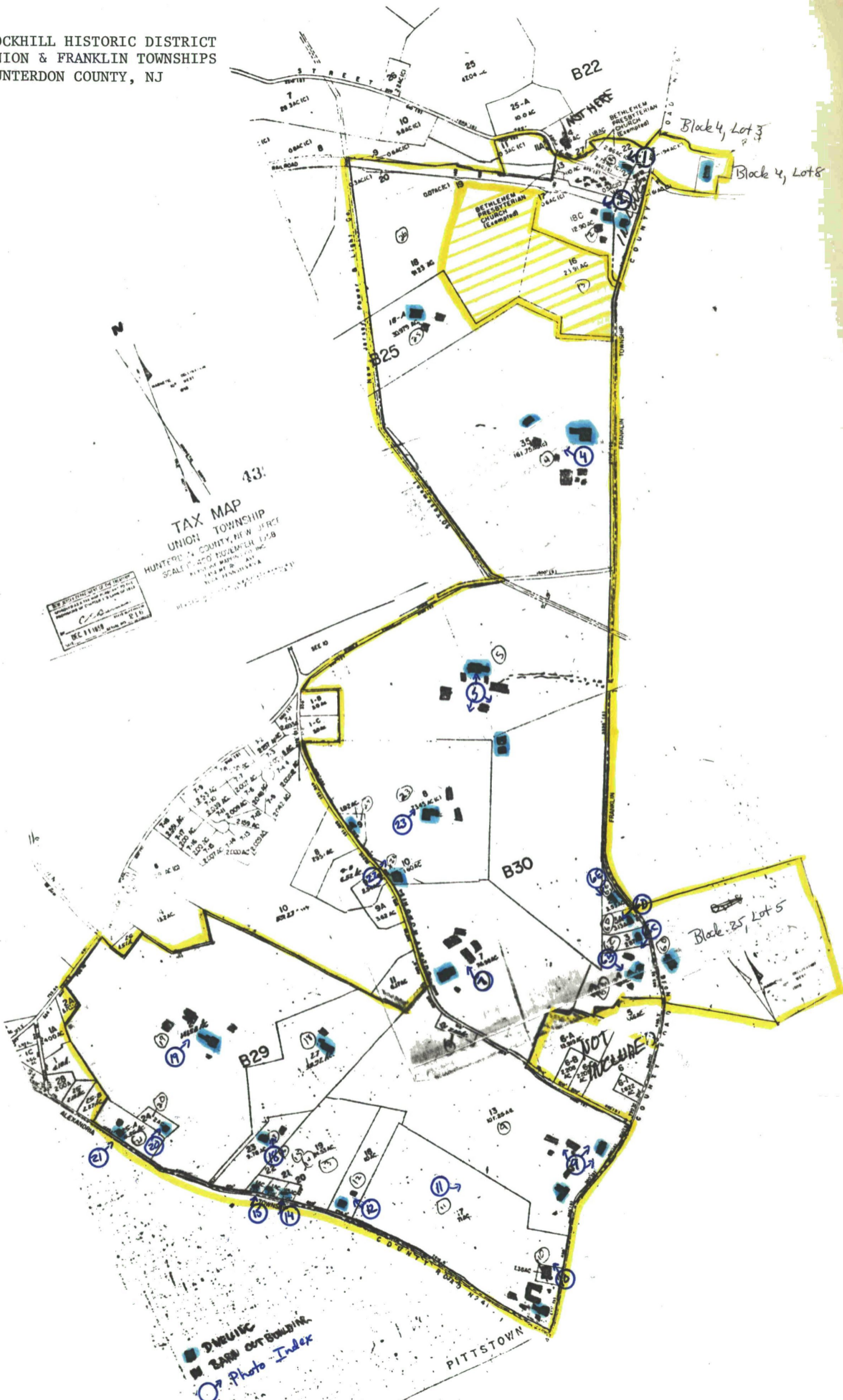
Verbal Boundary Description

Beginning at the S corner of Block 29, Lot 17 proceed NW along the east curb of County Route 41 to the West corner of Block 29, Lot 25-A.

Thence proceed to the North corner of said property. Thence, proceed to the South corner of Block 29, Lot 2A. Thence, proceed to the North corner. Thence, proceed along the S curb of Cook's Grove Road to the N corner of Block 29, Lot 2. Thence, proceed to the S. corner of Block 29, Lot 26; to and along the property line of Block 29, Lot 4 to the East point. Thence, proceed SE along the property line of Block 29, Lot 10 to the point of Block 29, Lot 11. Thence, proceed E along said property to the east curb of County Road 34. Thence, proceed N along said road to the SW corner of Block 30, Lot 1-C. Thence, proceed to the SE corner of said property. Thence, proceed to the NE corner of Block 30, Lot 1-B and to the NW corner. Thence proceed E along Cook's Cross Road to the east curb of the NJ Power and Light Company easement. Thence, proceed N along said easement to the Northern R.O.W. of the railroad tracks. Thence, proceed SE along said RR approximately 2800 feet. Thence, proceed N to the SW corner of Block 22, Lot 25-A. Thence, proceed along the S curb of the road to the SE curb of Block 22, Lot 27. Thence, proceed to the NE corner. Thence proceed to the SE corner of Block 22, Lot 22. Thence, proceed to the NE corner of Block 22, Lot 21. Thence, proceed SE along the stream to the NE corner of Block 4, Lot 8 in Franklin Township. Thence, proceed along said property to the north curb of the road. Thence, proceed NW along said road to the W curb of County Road 16. Thence, proceed S along said road (exempting recently subdivided and developed Block 25, Lots 18-D, 18-E, 18-G, 18-H, formerly shown as lot 16) to the SE corner of Block 30, Lot 2. Thence, proceed to the NE corner of Block 25, Lot 5 to the SE corner and then following the property back to the West curb of Route 16. Thence, proceed along the property line of Block 30, Lot 5 to SW corner. Thence, proceed along the property line of Block 30, Lot 6-A to the W corner. Thence, proceed across the road to the S curb of County Road 34. Thence, proceed SW along curb to the SE corner of Block 29, Lot 13. Thence, proceed S along the West curb of Route 16 to the point of beginning.

County Road 41 and County Road 16 are municipal boundaries and form a convenient district boundary to the SW and SE. The exception to these boundaries are the modern houses along the intersection of Route 41 and Wood Road and the Mill Building in Franklin Township north of the intersection of County Road 34 and County Road 16. The NE boundary is along the N.J. Power and Light Company right-of-way and Cook's Grove Road to County Road 34. Save for the major farm at Block 29, Lot 2 the area between County Road 44 and County Road 34 along Cook's Grove Road is primarily modern and is excluded from the nomination. The north boundary is the railroad right-of-way, but jutting north at the Presbyterian Church property. The area exempted from the nominated area was originally vacant farmland, but was sub-divided and developed in the late 1970's.

ROCKHILL HISTORIC DISTRICT
 UNION & FRANKLIN TOWNSHIPS
 HUNTERDON COUNTY, NJ



43.
TAX MAP
 UNION TOWNSHIP
 HUNTERDON COUNTY, NEW JERSEY
 SCALE 1" = 40' NOVEMBER 1958
 PLANNED BY WASHINGTON INC.
 1244 W. 4th St.
 YORK, PENNSYLVANIA

BY AUTHORITY OF THE BOARD OF SUPERVISORS
 HUNTERDON COUNTY, NEW JERSEY
 DEC 11 1958

● Dotted
 ■ BARR or BOUNDING
 ○ Photo Index

Block 4, Lot 3
 Block 4, Lots 7-8

Block 25, Lot 5

NOT ENCLOSED

PITTSTOWN

NATIONAL REGISTER OF HISTORIC PLACES
EVALUATION/RETURN SHEET

Rockhill Agricultural Historic District
Hunterdon County
NEW JERSEY

Working No. MAR 9 1984
Fed. Reg. Date: 2/5/85
Date Due: 4/5/84 - 4/23/84
Action: ACCEPT 4-5-84
 RETURN
Entered in the National Register REJECT
Federal Agency: _____

- resubmission
- nomination by person or local government
- owner objection
- appeal

Substantive Review: sample request appeal NR decision

Reviewer's comments:

Recom./Criteria _____
Reviewer _____
Discipline _____
Date _____
_____ see continuation sheet

Nomination returned for: _____ technical corrections cited below
_____ substantive reasons discussed below

1. Name

2. Location

3. Classification

Category	Ownership	Status	Present Use
	Public Acquisition	Accessible	

4. Owner of Property

5. Location of Legal Description

6. Representation in Existing Surveys

Has this property been determined eligible? yes no

7. Description

Condition

- | | |
|------------------------------------|---------------------------------------|
| <input type="checkbox"/> excellent | <input type="checkbox"/> deteriorated |
| <input type="checkbox"/> good | <input type="checkbox"/> ruins |
| <input type="checkbox"/> fair | <input type="checkbox"/> unexposed |

Check one

- unaltered
- altered

Check one

- original site
- moved date _____

Describe the present and original (if known) physical appearance

- summary paragraph
- completeness
- clarity
- alterations/integrity
- dates
- boundary selection

8. Significance

Period Areas of Significance—Check and justify below

Specific dates Builder/Architect

Statement of Significance (*in one paragraph*)

- summary paragraph
- completeness
- clarity
- applicable criteria
- justification of areas checked
- relating significance to the resource
- context
- relationship of integrity to significance
- justification of exception
- other

9. Major Bibliographical References

10. Geographical Data

Acreage of nominated property _____

Quadrangle name _____

UTM References _____

Verbal boundary description and justification _____

11. Form Prepared By

12. State Historic Preservation Officer Certification

The evaluated significance of this property within the state is:

____ national ____ state ____ local

State Historic Preservation Officer signature

title

date

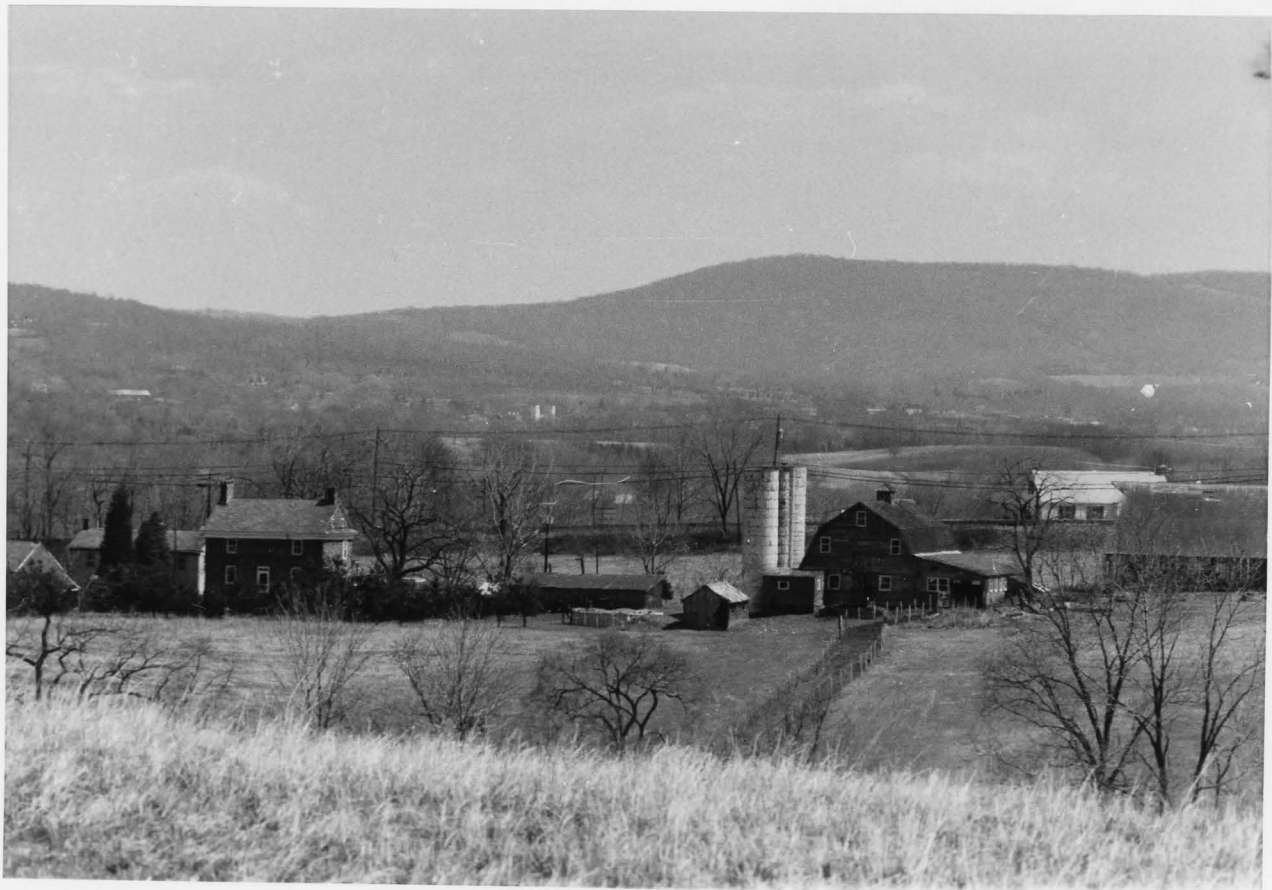
13. Other

- Maps
- Photographs
- Other

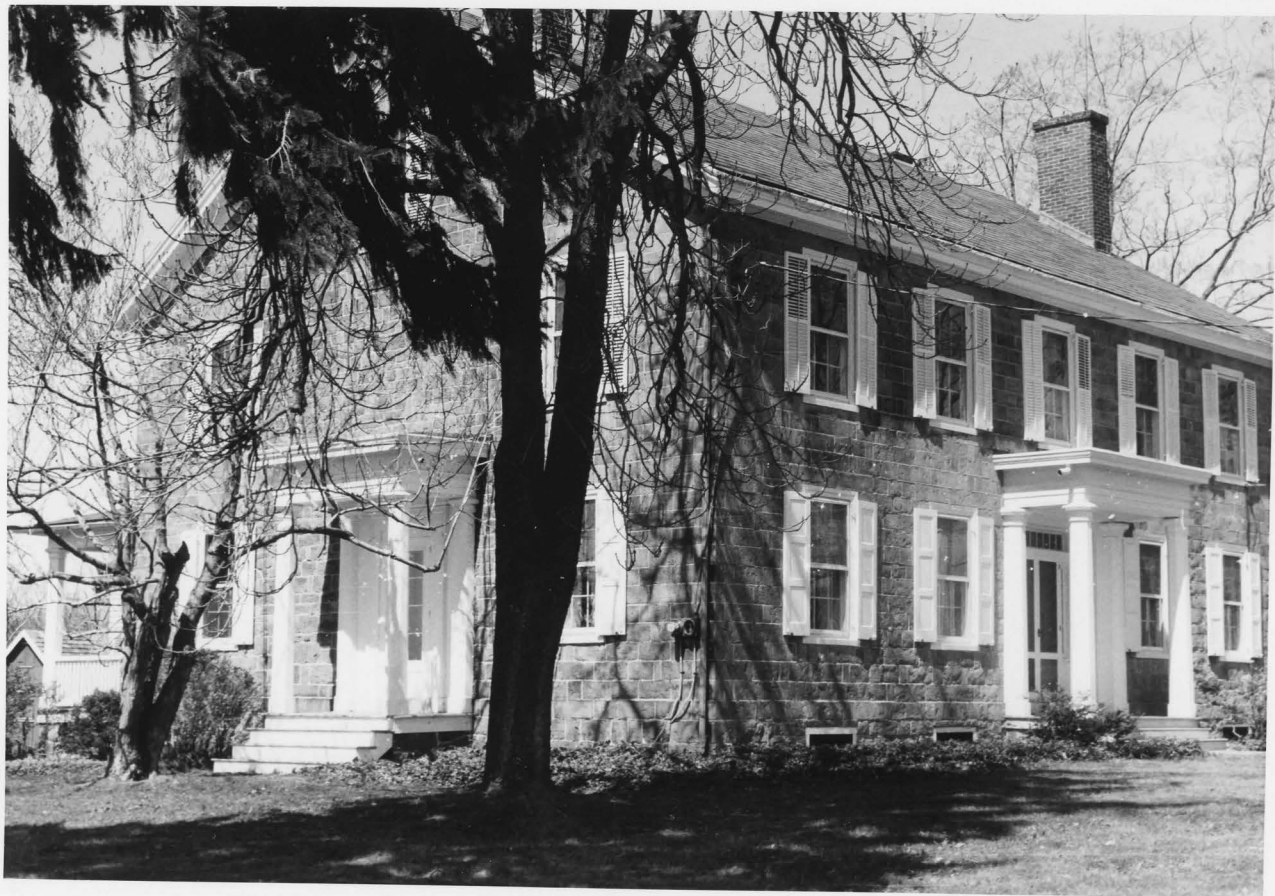
Questions concerning this nomination may be directed to _____

Signed _____ Date _____ Phone: _____

































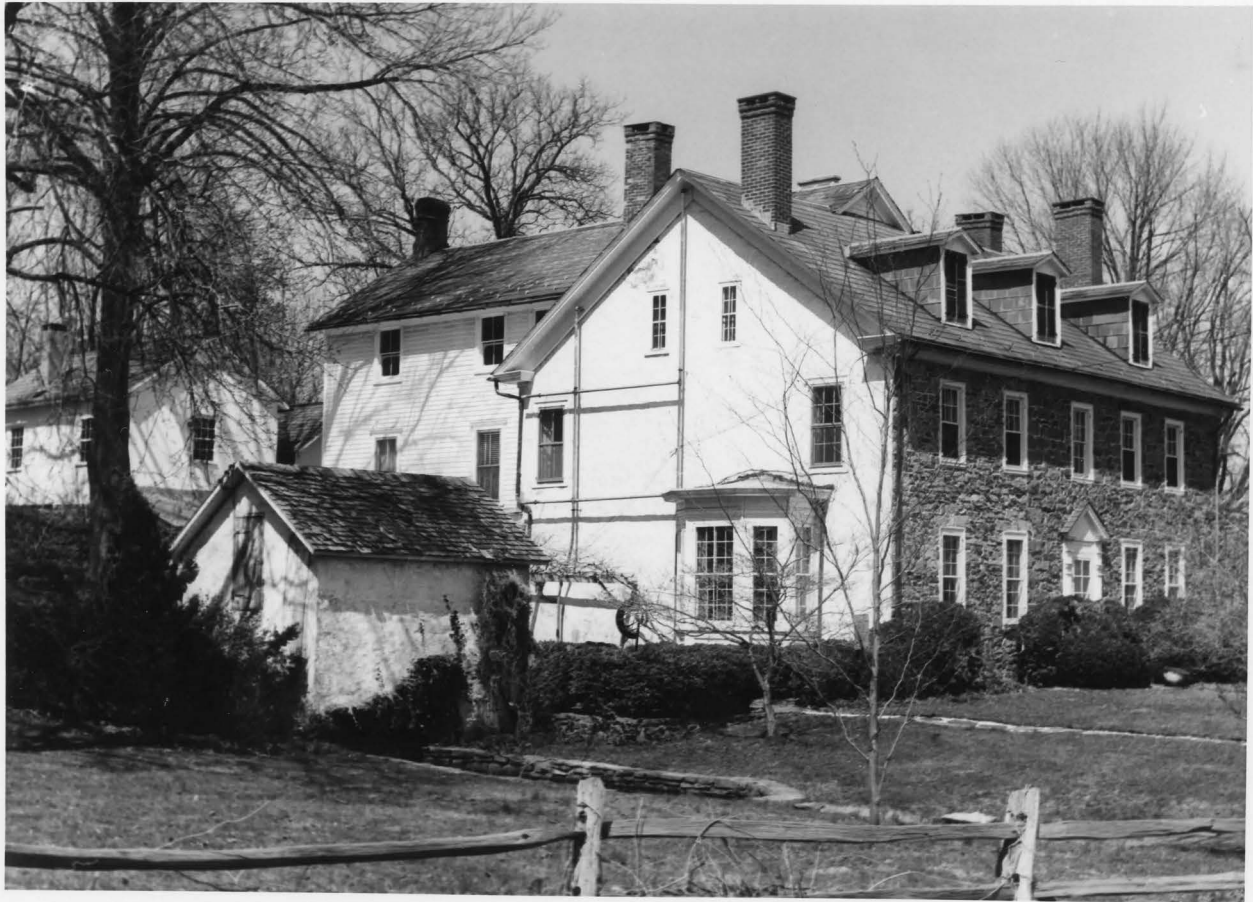




























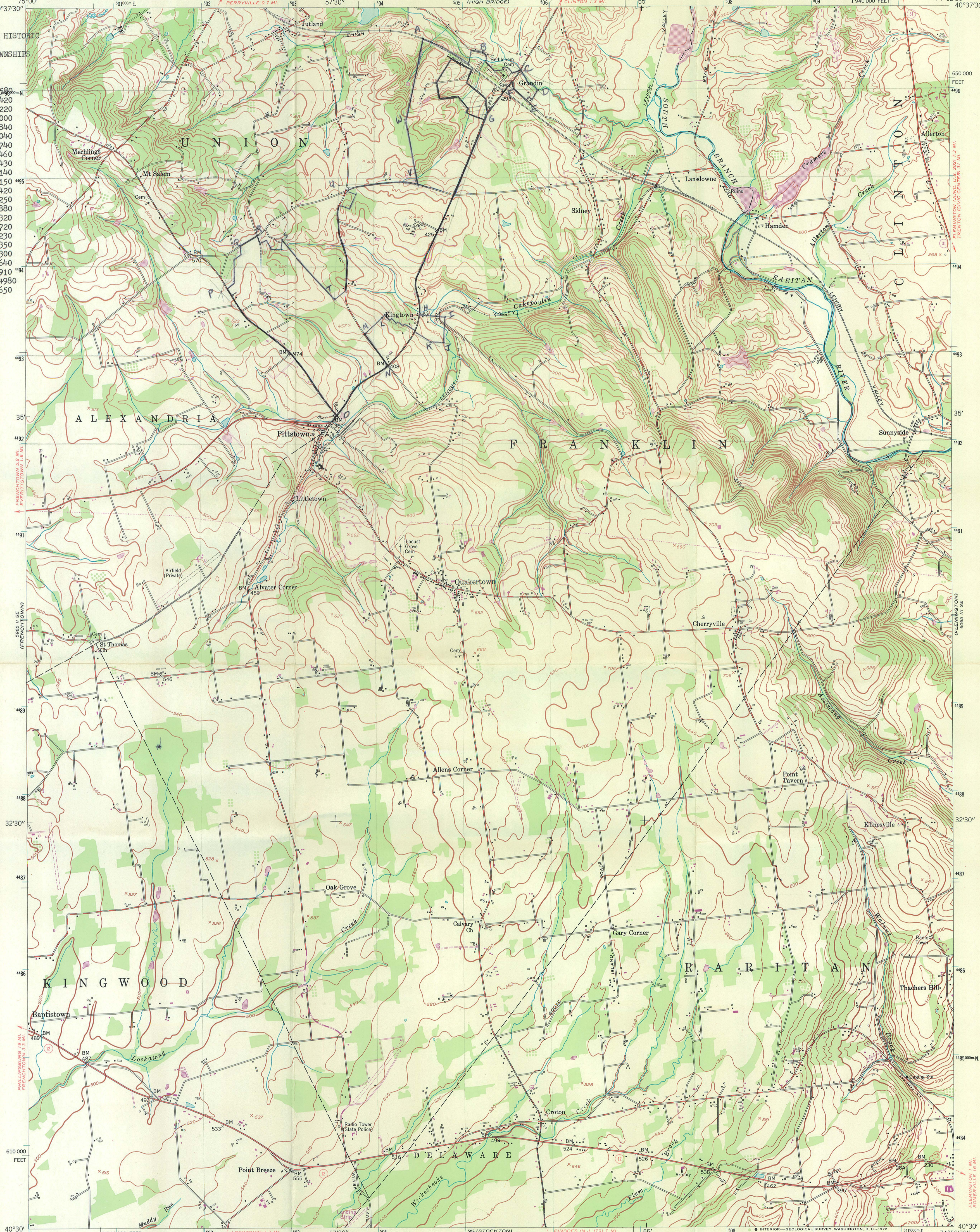






ROCKHILL AGRICULTURAL HISTORIC DISTRICT
UNION AND FRANKLIN TOWNSHIPS
HUNTERDON COUNTY
NEW JERSEY

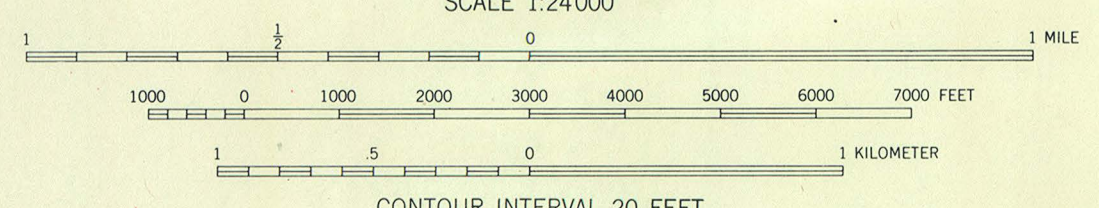
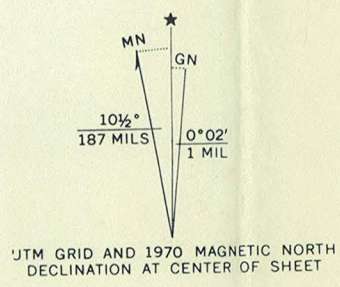
- UTM REFERENCES:
- A-18/504560/4496580
 - B-18/505220/4496420
 - C-18/505670/4496220
 - D-18/505870/4496000
 - E-18/505780/4495840
 - F-18/505540/4496040
 - G-18/505310/4495740
 - H-18/504530/4493460
 - I-18/504820/4493430
 - J-18/504800/4493140
 - K-18/504660/4493150
 - L-18/504090/4493420
 - M-18/503900/4493250
 - N-18/504160/4492880
 - O-18/503570/4492320
 - P-18/502240/4493720
 - Q-18/502440/4494230
 - R-18/502640/4494350
 - S-18/502920/4494300
 - T-18/503550/4493640
 - U-18/503600/4494910
 - V-18/504480/4494980
 - W-18/504350/4495650



Mapped by the Army Map Service
Edited and published by the Geological Survey
Control by USC&GS, USSC, and New Jersey Geodetic Survey
Topography from aerial photographs by photogrammetric methods. Aerial photographs taken 1942. Field check 1942
Culture revised by the Geological Survey 1955

Polyconic projection. 1927 North American datum
10,000-foot grid based on New Jersey coordinate system
1000-meter Universal Transverse Mercator grid ticks,
zone 18, shown in blue

Revisions shown in purple compiled by the Geological Survey
from aerial photographs taken 1970. This information
not field checked



CONTOUR INTERVAL 20 FEET
DATUM IS MEAN SEA LEVEL



ROAD CLASSIFICATION

Heavy-duty	Light-duty
Medium-duty	Unimproved dirt
State Route	

PITTS TOWN, N. J.
N4030-W7452.5/7.5

1955
PHOTOREVISED 1970
AMS 6065 III SW—SERIES V822

THIS MAP COMPLIES WITH NATIONAL MAP ACCURACY STANDARDS
FOR SALE BY U. S. GEOLOGICAL SURVEY, WASHINGTON, D. C. 20242
A FOLDER DESCRIBING TOPOGRAPHIC MAPS AND SYMBOLS IS AVAILABLE ON REQUEST

RECEIVED

AUG 27 1983



MILKY WAY FARM
PITTS TOWN, NEW JERSEY

August 25, 1983

Mr. William Forwood
Dep. Env. Protection
CN 402
Trenton, N.J. 08625

Dear Mr. Forwood:

Re: Rockhill Historical
Dist. Union T 'ship
Hunterdon County

I heartily endorse your plan to have the Rockhill District placed on the National Historic Register. This remarkable little area has been farmed for over two hundred years, and most of the buildings are original. Having worked on the project ever since the Bi-Centennial, which inspired so much of the research, I am happy that this district will get the recognition it deserves.

If there are any problems, I will be happy to contact the home owners for you.

Sincerely yours,

Helen Lazarus Barrett
R.D. 1 Box 33
Pittstown, N.J. 08867



State of New Jersey

DEPARTMENT OF ENVIRONMENTAL PROTECTION

DIVISION OF PARKS AND FORESTRY

**PLEASE ADDRESS REPLY TO:
OFFICE OF THE DIRECTOR
CN 404
TRENTON, N. J. 08625**

March 1, 1984

Ms. Carol Shull
Chief of Registration
National Register of
Historic Places
National Park Service
Department of the Interior
Washington, D.C. 20240

Dear Ms. Shull:

I am pleased to nominate the Rockhill Agricultural Historic District, Union and Franklin Townships, Hunterdon County, New Jersey to the National Register.

This application has received majority approval from the New Jersey State Review Board. All procedures were followed in accord with the interim regulations published in the Federal Register on November 16, 1981 and your letter of November 6, 1981. One property owner has responded in favor of listing, and a copy of her endorsement is enclosed.

Should you want any further information concerning this nomination, please contact William Forwood, Acting Administrator, Office of New Jersey Heritage, CN 402, Trenton, New Jersey or call (609) 292-2028.

Sincerely,

A handwritten signature in cursive script that reads "R.W. Myers".

Russell W. Myers
Deputy State Historic
Preservation Officer

RWM:SP