



**5. Classification****Ownership of Property**

(Check as many boxes as apply)

- private  
 public-local  
 public-State  
 public-Federal

**Category of Property**

(Check only one box)

- building(s)  
 district  
 site  
 structure  
 object

**Number of Resources within Property**

(Do not include previously listed resources in the count)

Contributing	Noncontributing	
1		buildings
		sites
		structures
		objects
1		Total

**Number of contributing resources previously listed in the National Register**

N/A

**Name of related multiple property listing**

(Enter "N/A" if property is not part of a multiple property listing.)

0

**6. Function or Use****Historic Functions** (Enter categories from instructions)

EDUCATION/Library

**Current Functions** (Enter categories from instructions)

EDUCATION/Library

**7. Description****Architectural Classification**

(Enter categories from instructions)

Jacobethan Revival

**Materials**

(Enter categories from Instructions)

foundation BRICK

walls BRICK

CONCRETE

roof CERAMIC TILE

other STONE

**Narrative Description**

(Describe the historic and current condition of the property on one or more continuation sheets.)

United States Department of the Interior  
National Park Service

National Register of Historic Places  
Continuation Sheet

Section number 7 Page 1

---

Abbie Greenleaf Library, Franconia NH

DESCRIPTION

Exterior:

The Abbie Greenleaf Library is centered on a one acre lot in the village of Franconia, New Hampshire. The site is landscaped simply with lawn and hydrangeas framing the front façade. The library consists of a rectangular main block (1912) measuring 46 feet by 23 feet with a small connector and 28 foot by 30 foot addition (1971) extending from the rear of the main block. The Jacobethan Revival main block rests on a brick and concrete foundation. Its walls are yellow Indiana brick with corner quoins, door and window surrounds, eaves, and sill course of gray sandstone. The gable roof is oriented laterally to the street and is clad in red ceramic tiles. An interior end chimney is situated on either end on the ridge.

The library's front (south) elevation is dominated by a shallow gabled central pavilion with quoins containing the center entry. Five stone steps access the main entry, a heavy oak door whose upper panel consists of a rectangle of 56 small panes of bull's-eye glass flanked by sidelights of similar bull's eye glass panes set in a heavy oak surround. The door is framed by a carved sandstone surround supporting an entablature with "1912" centered in the frieze. To either side of the door is a small four-part mullioned window. Above the door a stone panel reads, "Abbie Greenleaf Library". The pavilion's gable wall is framed by stone eaves and dominated by a mullioned window of three panes with transoms above. To either side of the pavilion is a large three-part mullioned window whose transoms contain stained glass panels. An eyebrow dormer punctuates the roof above each window; three-part windows lighting the basement are centered beneath them.

The east and west elevations are identical. Each contains two double mullioned windows with stained glass transoms. A stone beltcourse divides the façade horizontally. Another similar beltcourse divides the gable wall roughly in half. In the gable wall the chimneys are expressed by each stack being corbelled out about six inches from the wall plane and rising above the ridge. The stack itself is comprised of six flues clustered together. The raised basement is lighted by two sets of paired windows in the foundation wall.

The rear elevation is dominated by the connector to the new addition which extends north from the central third of the wall. To either side of the connector the treatment is the

United States Department of the Interior  
National Park Service

# National Register of Historic Places Continuation Sheet

Section number 7 Page 2

---

Abbie Greenleaf Library, Franconia NH

same as the end bays on the front (south) elevation, that is a large three-part mullioned window whose transoms contain decorative stained glass. Beneath, in the foundation wall, are three-part basement windows.

The 240 square foot connector extends north from the center of the main block's rear (north) elevation and links the main block to the addition. The connector is of concrete block construction with yellow brick veneer. Its exterior elevations, to the east and west, are primarily yellow brick with cast concrete along the upper wall. A narrow full height fixed window is situated at either end of the brick wall, abutting the main block and addition.

The addition, also concrete block with yellow brick veneer, extends beyond the connector. It is rectangular in plan, one story with full basement, with a flat roof. the addition's exterior surfaces are primarily expanses of brick veneer with a wide band of concrete along the upper wall. There is no fenestration on the east (side) wall. In the center of the west wall a door accesses the lower level and a fixed vertical window above it lights the stacks. The rear elevation is accessed by a door to the upper level; foundation windows light the basement.

### Interior:

The interior of the main block is richly detailed with African mahogany woodwork, marble wainscoting, and mosaic tile flooring. Above each of the windows is a stained glass transom window featuring the flag of a different country painted onto the glass. The connector and addition give way to clean utilitarian painted concrete block walls and concrete flooring and ceilings.

The main entrance accesses a small vestibule with walls of yellow Indiana brick and a vaulted ceiling. An oak door with long narrow glazing panels gives way to the main block, entering onto an open area with circulation desk straight ahead and reading rooms on either side.

The central hallway, like the rest of the main floor, has beautiful mosaic tile flooring in a design of gray, steel blue, and terracotta in the Roman style, believed to duplicate flooring tiles at the Massachusetts State House. In each corner of the space is a cluster of pilasters and columns with Scamozzi capitals supporting a decorative entablature that

**United States Department of the Interior  
National Park Service**

**National Register of Historic Places  
Continuation Sheet**

Section number 7 Page 3

---

Abbie Greenleaf Library, Franconia NH

defines this area of the building. The front wall is detailed with marble wainscoting under a mahogany chair rail. The door is flanked by portraits of Abbie Greenleaf for whom the library is named to the right (west) and her husband, Charles H. Greenleaf, who gave the library to the town, to the east.

The central space is flanked by reading rooms to either side. Centered on the end wall, each room has a marble fireplace framed by decorative consoles and entablatures. To either side of the fireplace is a double window with stained glass transom above. The window units are framed by and divided by heavy wooden trim. Between the window sills and the floor are wooden book cases. Each of the front (south) and rear (north) walls is dominated by a single triple window unit with stained glass transoms framed and divided by heavy wooden trim. Wooden bookcases are found beneath the windows and, in the east room, occupy the wall area on either side of the windows. Originally the east room was the reading room and the west room the stacks.

At the southeast corner of the west reading room an oak door with colored glass upper panel accesses a small closet located between the front (south) of the reading room and the vestibule. Originally a lavatory, the space has more recently been converted to a closet containing shelving.

At the southwest corner of the east reading room an oak door provides access to a disused metal spiral staircase running from the basement to the attic. The attic is entirely open with wooden floor and plastered walls and ceiling. Eyebrow dormers and the pavilion's gable window light the area. It is currently used for storage, including two chandeliers which once hung in the east and west rooms, the two stained glass windows removed from the rear elevation when the connector was constructed, and some boxes of books. The full basement beneath the main block is open with brick foundation walls and concrete floor. This area is used for storage of books and records.

The connector consists primarily of a short hallway with a restroom to the east and an office to the west. A plaque on the east wall states, "Presented by Lucy K. Priest in Memory of Harry W. and May M. Priest". Likewise the basement of the connector provides access between the main block and addition and incorporates a mechanical room and an accessible restroom.

**United States Department of the Interior  
National Park Service**

**National Register of Historic Places  
Continuation Sheet**

Section number 7 Page 4

---

Abbie Greenleaf Library, Franconia NH

The main floor of the addition consists primarily of stacks. Extending along the southern two thirds of the west wall are a staircase original to the addition and an elevator added more recently. The lower level of the addition is laid out similarly with the open area serving as a meeting room and children's area.

**8. Statement of Significance**

**Applicable National Register Criteria** (Mark "x" in one or more boxes for the criteria qualifying the property for National Register listing)

**A** Property is associated with events that have made a significant contribution to the broad patterns of our history.

**B** Property is associated with the lives of persons significant in our past.

**C** Property embodies the distinctive characteristics of a type, period, or method of construction or represents the work of a master, or possesses high artistic values, or represents significant and distinguishable entity whose components lack individual distinction.

**D** Property has yielded, or is likely to yield information important in prehistory history.

**Criteria Considerations**

(Mark "X" in all the boxes that apply.)

**A** owned by a religious institution or used for religious purposes.

**B** removed from its original location.

**C** a birthplace or a grave.

**D** a cemetery.

**E** a reconstructed building, object, or structure.

**F** a commemorative property.

**G** less than 50 years of age or achieved significance within the past 50 years.

**Areas of Significance**

(Enter categories from instructions)

A: Education

C: Architecture

**Period of Significance**

A: 1912-1953

C: 1912

**Significant Dates**

1912

**Significant Person**

(Complete if Criterion B is marked above)

N/A

**Cultural Affiliation**

N/A

**Architect/Builder**

McLean, William H.

**Narrative Statement of Significance** (Explain the significance of the property on one or more continuation sheets.)

**9. Major Bibliographical References**

**Bibliography**(Cite the books, articles, and other sources used in preparing this form on one or more continuation sheets.)

**Previous documentation on file (NPS)**

- preliminary determination of individual listing (36 CFR 67)has been requested.
- previously listed in the National Register
- previously determined eligible by the National Register
- designated a National Historic Landmark
- recorded by Historic American Buildings Survey # \_\_\_\_\_
- recorded by Historic American Engineering Record # \_\_\_\_\_

**Primary Location of Additional Data**

- State Historic Preservation Office
  - Other State agency
  - Federal agency
  - Local government
  - University
  - Other
- Name of repository: Abbie Greenleaf Library

**United States Department of the Interior  
National Park Service****National Register of Historic Places  
Continuation Sheet**Section number 8 Page 5

---

Abbie Greenleaf Library, Franconia NH

**SIGNIFICANCE**

The Abbie Greenleaf Library is eligible for the National Register under Criterion A for significance in Education as the one building in Franconia erected specifically for use as a library. The period of significance under Criterion A is 1912 to 1953, the date of completion to the 50-year cut-off, for which the property retains integrity of location, design, setting, materials, workmanship, feeling, and association. Under Criterion C, the library qualifies under Architecture. It is an extremely rare New Hampshire example of the Jacobethan Revival style. Architecturally the library retains integrity of location, design, setting, materials, workmanship, feeling, and association for 1912, the date of completion. The Abbie Greenleaf Library is an extremely well-preserved structure. It is also noteworthy for its sympathetic rear addition completed in 1971, an early example of library additions in New Hampshire and one that successfully complements the historic main block and accommodates the operational needs of the library.

**Education**

The Abbie Greenleaf Library was built for the town of Franconia by Charles H. Greenleaf and named in honor of his wife. Mr. Greenleaf was the builder and owner of the renowned Profile House, one of the Grand Hotels of late 19<sup>th</sup> century New Hampshire. He had taken considerable interest in the town and its growing prosperity and decided to build a library for the town to enhance the attractiveness of the area and be of value to the citizens. Greenleaf purchased an acre of land next to the town hall and engaged William H. McLean, the noted designer of many libraries. The building was completed and dedicated to the town in December of 1912.

The Franconia Notch area had long been a popular destination for travelers, many of whom became summer residents. Two of those residents were the authors Annie Trumbell Slosson and W. C. Prime who, in 1880, gave the town 100 books. This collection, a social library charging a small fee for use of the books, was housed in the general store. More books were added over the next twelve years and in 1892, the town voted to make the collection of 339 books a Free Library for all the town's inhabitants. The library was moved to the village school and continued to grow with contributions

United States Department of the Interior  
National Park Service

# National Register of Historic Places Continuation Sheet

Section number 8 Page 6

---

Abbie Greenleaf Library, Franconia NH

from summer visitors and town funds. For the next 20 years the library was located at the school. Finally in 1912 the town library had a home of its own in the beautiful Jacobethan Revival library dedicated in December of that year.

Greenleaf's interest in the library was on-going. In giving the library to the town, Greenleaf did not seek to make restrictions on the gift, though he requested the privilege of adding to it on occasion, as appropriate. In his will, probated in 1924, a bequest of \$15,000 was made for the library's upkeep.

The Abbie Greenleaf Library has been a fundamental educational resource for both children and adults since its construction. Even as late as 1996, when the local school was finally able to build a library of its own, the Abbie Greenleaf Library served as the prime resource center for Franconia's students. It has served the town and the neighboring communities of Sugar Hill and Easton as well.

### Architecture

The design of the Abbie Greenleaf Library characterizes the Jacobethan Revival style seen in America during the last decade of the 19<sup>th</sup> century and in first decades of the 20<sup>th</sup>. This style, which mixes late Medieval and Renaissance influences, takes its inspiration from English designs of the Elizabethan and Jacobean periods (1558-1625). Never a commonly used style, the Jacobethan Revival is primarily found in residential architecture. It is in educational architecture, however, that the style expresses itself most forcefully.

The Jacobethan Revival is characterized by masonry construction, typically brick walls and stone detailing, as in the Abbie Greenleaf Library. The library incorporates the other hallmarks of the style - gables rising above the roof, clustered chimney stacks, and large rectangular mullioned windows with transoms. Although a small and compact design, the library illustrates Jacobethan Revival design wonderfully well. In addition, it is an extremely rare representation of the idiom in New Hampshire. The only other example that has been identified is the Armour Infirmary (1913-14) at St. Paul's School in Concord, New Hampshire, designed by R. Clipson Sturgis.

The 1912 Abbie Greenleaf library was designed by noted architect of public buildings, William H. McLean of the Boston firm McLean and Wright. This firm was responsible

**United States Department of the Interior  
National Park Service**

**National Register of Historic Places  
Continuation Sheet**

Section number 8 Page 7

---

Abbie Greenleaf Library, Franconia NH

for numerous library designs in New England. In New Hampshire these included libraries in Alstead, Franklin, Greenfield, Lancaster, Lebanon, and Wilton, as well as Franconia.

The 1971 addition was designed by the firm of Carter and Woodruff of Nashua, New Hampshire. It represents an early library addition and one that harmonizes well with the historic main block. Funds for the addition came from an earlier bequest to the library made by Lucy K. Priest and supplemented by other donations.

United States Department of the Interior  
National Park Service

**National Register of Historic Places  
Continuation Sheet**

Section number   9   Page   8  

---

Abbie Greenleaf Library, Franconia NH

BIBLIOGRAPHY

Callendar, Eva I. Unpublished manuscript describing the Abbie Greenleaf Library .  
1927. In the collection of the Abbie Greenleaf Library, Franconia NH.

Deed to Abbie Greenleaf Library. 1912. Grafton County Courthouse, North Haverhill,  
New Hampshire.

Tolles, Bryant F., Jr. New Hampshire Architecture: An Illustrated Guide. Hanover, New  
Hampshire: University Press of New England, 1979.

Welsh, Sarah. A History of Franconia, New Hampshire: 1772-1972. Littleton, New  
Hampshire, 1972.

Whiffen, Marcus. American Architecture Since 1780: A Guide to the Styles.  
Cambridge, Massachusetts: The MIT Press, 1981.

Interviews:

Harriet Taylor, Trustee, Abbie Greenleaf Library. February 3, 12, and 17, 2003.

**10. Geographical Data****Acreage of Property**

UTM References (Place additional UTM references on a continuation sheet)

1  
Zone Easting Northing  
1 19 280840 4900600  
2 \_\_\_\_\_

Zone Easting Northing  
3 \_\_\_\_\_  
4 \_\_\_\_\_

 See continuation sheet.**Verbal Boundary Description**

(Describe the boundaries of the property on a continuation sheet.)

**Boundary Justification** (Explain why the boundaries were selected on a continuation sheet.)**11. Form Prepared By**

name/title Harriet Taylor  
Christine Fonda\*  
Organization AG Library Trustees date February 2003  
NH Division of Historical Resources\*  
street & number 545 Butterhill Road telephone (603) 823-7740  
19 Pillsbury Street \* (603) 271-6437\*  
city or town Franconia, state N.H. zip code 03580  
Concord \* 03301\*

**Additional Documentation**

Submit the following items with the completed form:

**Continuation Sheets****Maps**A **USGS map** (7.5 or 15 minute series) indicating the property's location.A **sketch map** for historic districts and properties having large acreage or numerous resources.**Photographs**Representative **black and white photographs** of the property.**Additional items**

(Check with the SHPO or FPO for any additional items)

**Property Owner**

(Complete this item at the request of the SHPO or FPO.)

name Town of Franconia  
street & number P.O. Box 900 telephone (603) 823-7752  
city or town Franconia state NH zip code 03580

**Paperwork Reduction Act Statement:** This information is being collected for applications to the National Register of Historic Places to nominate properties for listing or determine eligibility for listing, to list properties, and to amend existing listings. Response to this request is required to obtain a benefit in accordance with the National Historic Preservation Act, as amended (16 U.S.C. 470 et seq.).

**Estimated Burden Statement:** Public reporting burden for this form is estimated to average 18.1 hours per response including the time for reviewing instructions, gathering and maintaining data, and completing and reviewing the form. Direct comments regarding this burden estimate or any aspect of this form to the Chief, Administrative Services Division, National Park Service, P.O. Box 37127, Washington, DC 20013-7127; and the Office of Management and Budget, Paperwork Reductions Project (1024-0018), Washington, DC 20503.

United States Department of the Interior  
National Park Service

**National Register of Historic Places  
Continuation Sheet**

Section number 10 Page 9

---

Abbie Greenleaf Library, Franconia NH

GEOGRAPHICAL INFORMATION

Verbal Boundary Description

The boundaries of the nominated property are indicated on the attached sketch map.

Boundary Justification

The nominated property is the lot purchased by Charles H. Greenleaf for the construction of the Abbie Greenleaf Library and upon which the library was constructed. It was given to the Town of Franconia in December 1912 and continues to be the parcel upon which the library stands.

United States Department of the Interior  
National Park Service

**National Register of Historic Places  
Continuation Sheet**

Section number \_\_\_\_\_ Page 10

---

Abbie Greenleaf Library, Franconia NH

PHOTOGRAPH LABELS

The following pertains to all 8 photographs:

- 1.) Abbie Greenleaf Library
- 2.) Franconia (Grafton County) NH
- 3.) Photographer: Christine E. Fonda
- 4.) Photographs taken February 3, 2003
- 5.) Negative at: NH Div. of Historical Resources, Concord NH

Photo #1:

side (west) and front (south) elevations, looking northeast

Photo #2:

front (south) and side (east) elevations, looking northwest

Photo #3:

central pavilion, front (south) elevation, looking north

Photo #4:

side (west) elevations, looking east

Photo #5:

Central hallway showing entry door on south wall, looking southwest

Photo #6:

Southwest corner of west reading room, looking southwest

Photo #7:

Fireplace on east wall of east reading room, looking east

Photo #8:

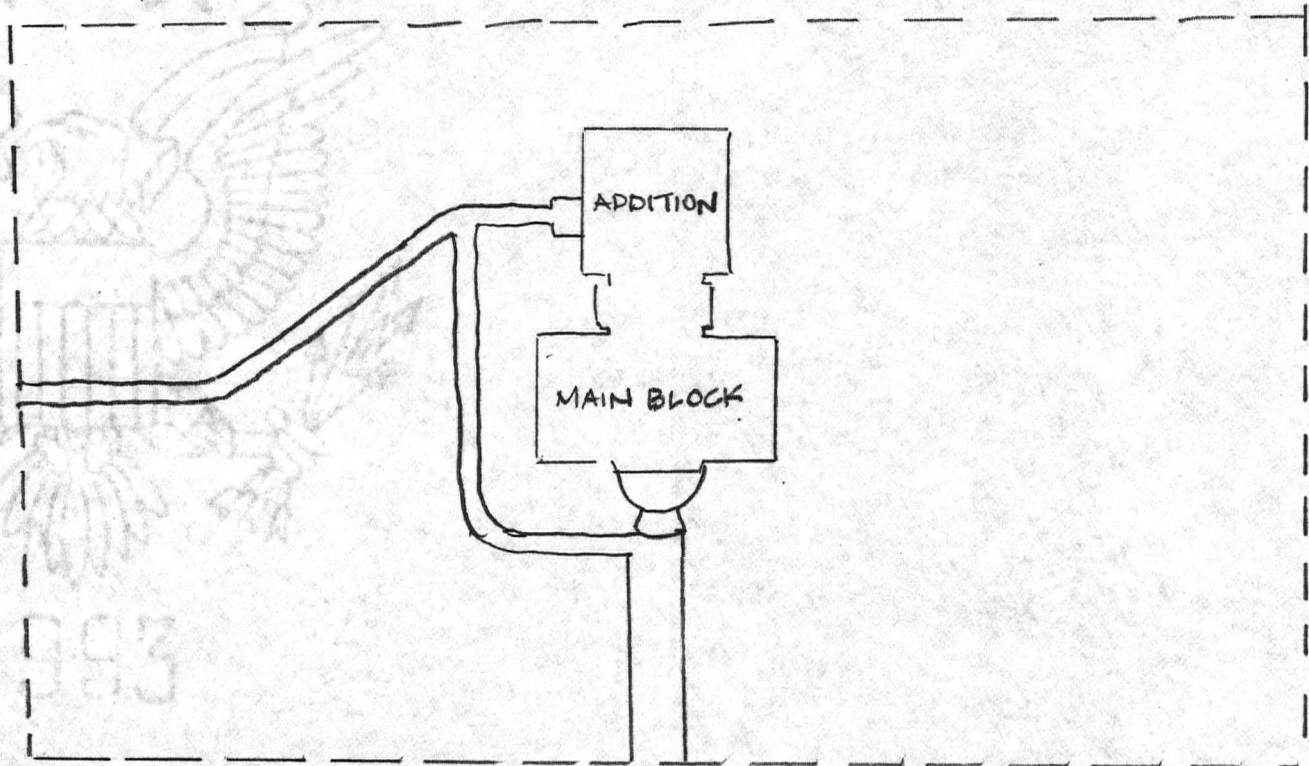
North window of east reading room, looking north.

United States Department of the Interior  
National Park Service

# National Register of Historic Places Continuation Sheet

Section number \_\_\_\_\_ Page \_\_\_\_\_

ABBIE GREENLEAF LIBRARY  
FRANCONIA NH  
SKETCH MAP



MAIN STREET



0 10 20 40 60 FEET

BOUNDARIES

UNITED STATES DEPARTMENT OF THE INTERIOR  
NATIONAL PARK SERVICE

NATIONAL REGISTER OF HISTORIC PLACES  
EVALUATION/RETURN SHEET

REQUESTED ACTION: NOMINATION

PROPERTY Greenleaf, Abbie, Library  
NAME:

MULTIPLE  
NAME:

STATE & COUNTY: NEW HAMPSHIRE, Grafton

DATE RECEIVED: 4/29/03 DATE OF PENDING LIST: 5/29/03  
DATE OF 16TH DAY: 6/14/03 DATE OF 45TH DAY: 6/13/03  
DATE OF WEEKLY LIST:

REFERENCE NUMBER: 03000526

REASONS FOR REVIEW:

APPEAL: N DATA PROBLEM: N LANDSCAPE: N LESS THAN 50 YEARS: N  
OTHER: N PDIL: N PERIOD: N PROGRAM UNAPPROVED: N  
REQUEST: N SAMPLE: N SLR DRAFT: Y NATIONAL: N

COMMENT WAIVER: N

ACCEPT  RETURN  REJECT 6/13/03 DATE

ABSTRACT/SUMMARY COMMENTS:

**Entered in the  
National Register**

RECOM./CRITERIA \_\_\_\_\_

REVIEWER \_\_\_\_\_ DISCIPLINE \_\_\_\_\_

TELEPHONE \_\_\_\_\_ DATE \_\_\_\_\_

DOCUMENTATION see attached comments Y/N see attached SLR Y/N



ABBIE GREENLEAF LIBRARY  
FRANCONIA NH  
PHOTO #1

Looking NE

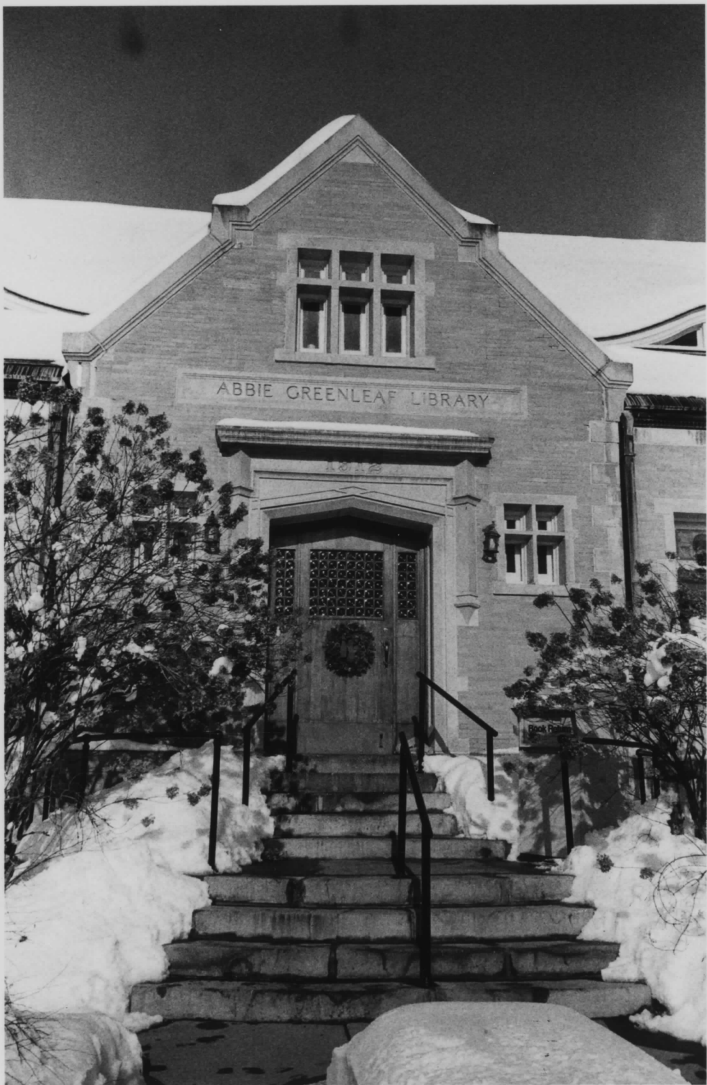
07/14/03 Concord Camera Store NNNNNNNN  
... 006 01



ABBIE GREENLEAF LIBRARY  
FRANCONIA NH  
PHOTO #2

Looking NW

07/19/03 Concord Camera Store NNNNNNNN  
000 04



ABBIE GREENLEAF LIBRARY  
FRANCONIA NH  
PHOTO # 2

Central Pavilion, looking N

02/07/03 Concord Camera Store NHHF NHHH  
... 073 04



ABBIE OPPENHEIM LIBRARY  
FRANCONIA NH  
PHOTO #4

looking E

07/19/03 Concord 001 01  
CAMERA STORE NNNNNN



ABBIE GREENLEAF LIBRARY  
FRANCONIA NH  
PHOTO #5

Central hallway  
Showing entry door  
on South wall,  
looking SW

07/24/03  
001 20  
Concord  
Camera Store  
NNNNNNNN



ADDIE GREENLEAF WILKINSON  
FRANCONIA NH  
PHOTO #6

SW corner of  
West Reding Room,  
looking SW

11/24/03  
CONCORD  
CAMERA STORE  
NNNNNNNN



ABBIE GREENLEAF LIBRARY  
FRANCONIA NH  
PHOTO #1

Fireplace on East Wall of East Reading Room  
looking E

02/09/03 Concord Camera Store NNNNNNNN  
005 07

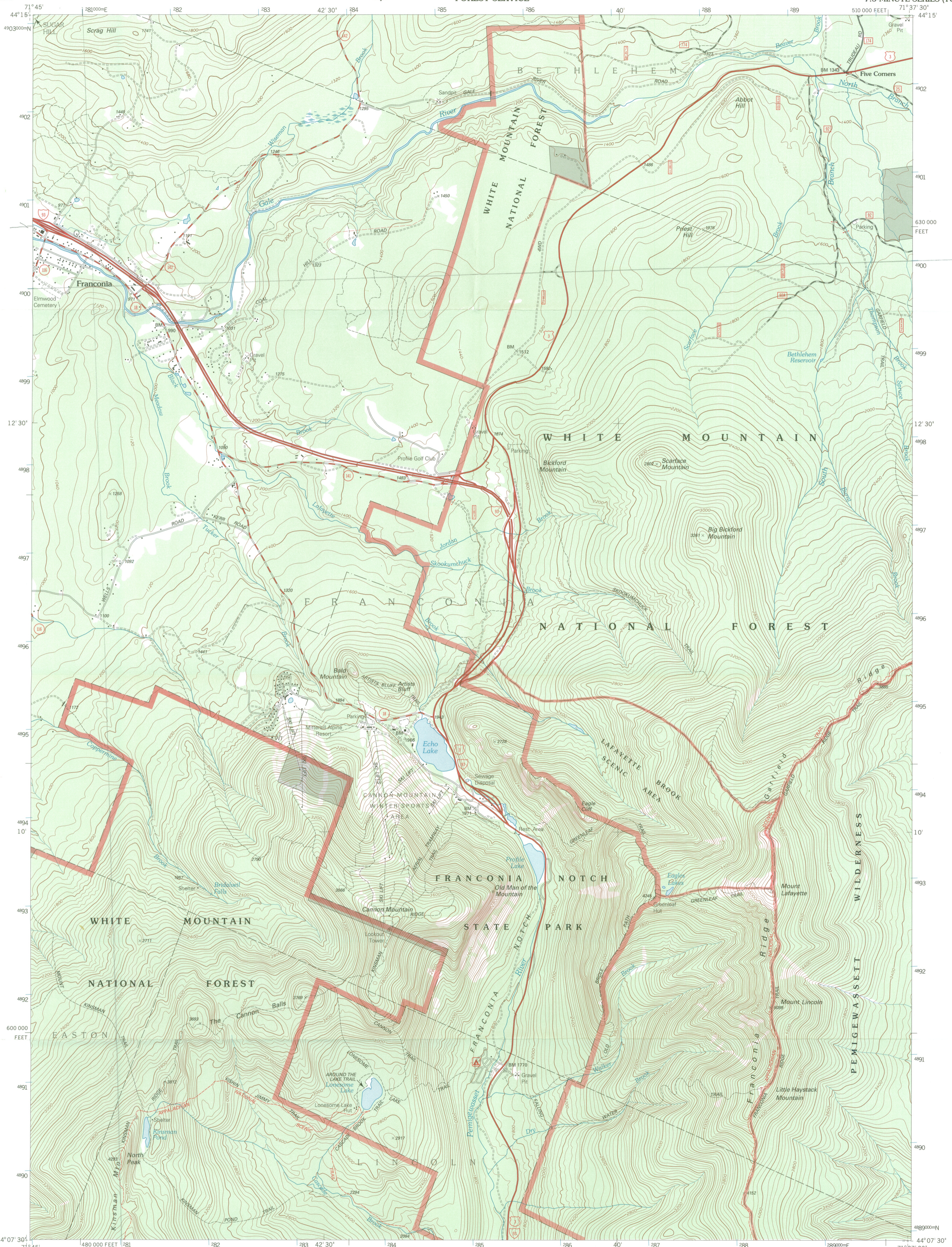


ABBIE GREENLEAF LIBRARY  
FRANCONIA NH  
PHOTO # 8

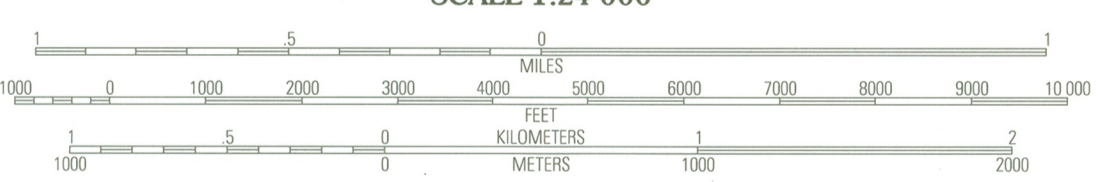
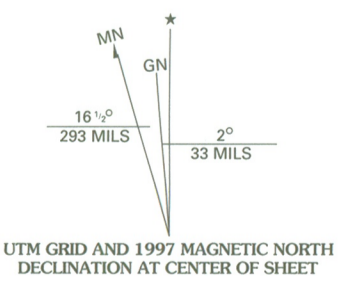
North window of East Reading Room  
looking N

02/19/05 50/00/20  
50 500  
FRANCONIA STATE LIBRARY PHOTO 8

TODD GREENLEAF  
LIBRARY  
FRANCONIA NH  
[GRAFTON COUNTY]  
JUN 19  
280-840  
4900-000



Produced by the United States Geological Survey 1989  
Revision within and adjacent to National Forest System lands  
by USDA Forest Service 1995  
Topography compiled 1964. Planimetry derived from imagery taken 1992  
Survey control current as of 1995  
North American Datum of 1927 (NAD 27). Projection and 10 000-foot ticks:  
New Hampshire coordinate system, (transverse Mercator)  
Blue 1000-meter Universal Transverse Mercator ticks, zone 19  
North American Datum of 1983 (NAD 83) is shown by dashed corner ticks  
The values of the shift between NAD 27 and NAD 83 for 7.5-minute  
intersections are obtainable from National Geodetic Survey NADCON software  
Non-National Forest System lands within the National Forest  
Inholdings may exist in other National or State reservations  
This map is not a legal land line or ownership document. Public lands are  
subject to change and leasing, and may have access restrictions; check  
with local offices. Obtain permission before entering private lands



1	2	3	1 Littleton
			2 Bethlehem
			3 Twin Mountain
4	5	6	4 Sugar Hill
			5 South Twin Mountain
			6 Mount Moosilauke
			7 Lincoln
6	7	8	8 Mount Osceola

- HIGHWAYS AND ROADS
- Interstate ..... 5
  - U. S. ..... 76
  - State ..... 102
  - County ..... 103
  - National Forest, suitable for passenger cars ..... 104
  - National Forest, suitable for high clearance vehicles ..... 105
  - National Forest Trail ..... 384
  - Primary highway ..... 106
  - Secondary highway ..... 107
  - Light-duty road ..... 108
  - Composition: Unspecified ..... 109
  - Paved ..... 110
  - Gravel ..... 111
  - Dirt ..... 112
  - Unimproved; 4 wheel drive ..... 113
  - Trail ..... 114
  - Gate ..... 115

THIS MAP COMPLIES WITH NATIONAL MAP ACCURACY STANDARDS  
FOR SALE BY U.S. GEOLOGICAL SURVEY, P.O. BOX 25286, DENVER, COLORADO 80225  
A FOLDER DESCRIBING TOPOGRAPHIC MAPS AND SYMBOLS IS AVAILABLE ON REQUEST

FRANCONIA, NH  
1995  
NIMA 6672 II NW - SERIES V812

