

HISTORIC NAME: LeSueur County Courthouse and Jail		COUNTY: LeSueur 81000682
CURRENT NAME:		CITY/TWP.: Le Center
LEGAL DESC.: block 12 and lots 1,2,3,4,13,14,15,16, of block 13 Le Center		ADDRESS: 88 South Park Avenue and 130 South Park Avenue
CLASSIFICATION:	CONDITION:	SIGNIFICANCE:
Buildings <u>X</u>	Excellent _____	Local <u>X</u>
Structure _____	Good <u>X</u>	State _____
Object _____	Fair _____	National _____
District _____	Deteriorated _____	
THEME/S:		
		Primary <u>Politics/Gov'n't</u>
		Secondary <u>Architecture</u>
		Others _____
OPEN TO THE PUBLIC: Yes ___ No ___ Restricted <u>X</u>	PRESENT USE: County Courthouse, jail and police departme	
VISIBLE FROM THE ROAD: Yes <u>X</u> No ___		
OCCUPIED: Yes <u>X</u> No ___		
DATE CONSTRUCTED: 1896 and 1914	ORIGINAL USE: Courthouse, jail, & Sheriff's residence	
ORIGINAL OWNER: Le Sueur County	ARCHITECT/ BUILDER : See description	
OWNER'S NAME AND ADDRESS: Le Sueur County 88 South Park Avenue Le Center	ACREAGE: Less than one acre approx. <u>4</u> acr	UTM REFERENCE:
LOCAL CONTACT/ORG.: Le Sueur County Historical Society Box 577 Elysian, MN 56028	LeCenter Quad. 15 / 441700 / 4915050	
FORM PREPARED BY: Britta Bloomberg		
DATE: 8/80		

DESCRIPTION:

The LeSueur County Courthouse and Jail are centrally located in the city of LeCenter on the west edge of the principal business district. Both structures are oriented toward Park Avenue. The courthouse is situated on a spacious city block near the northwest corner of Park and Sharon Street. The jail building is located across the street on the southwest corner of the same intersection. The masonry buildings with their respective towers and spacious lots provide a dominant visual focus in the community.

LeSueur County Courthouse (1896)

The two story LeSueur County Courthouse was designed by the Chicago architect Louis M. Curry and constructed in 1896 by James Dolan and Co., contractors of Waterville. The Richardsonian structure is constructed of buff-colored brick with smooth and rusticated Kasota stone for highlighting. The building's design is basically symmetrical and features a central bay flanked by pavilions; the central tower rising two stories above the truncated hip roof is a dominant feature. The central bay features a portico supported by four rusticated stone columns and a gableend capped by a stone coping. A bank of rectilinear transomed windows are located in the second floor with the words "ERECTED A.D. 1896" inscribed in the stone lintel above the windows. The flanking pavilions feature stone corner quoins and terminate in pyramidal roofs with dormers and finials. Bands of semi-circular arched transomed windows are utilized on the second floor and rectilinear transomed windows appear on the first level. Stone capitals decorate the horizontal stone band beneath the second story arched transoms. The tower is comprised of a square base set on a pendentive, featuring bands of rectilinear transomed windows, rusticated stone balconets, wooden cornice, and an octagonal drum featuring semi-circular arched windows and a domical roof surmounted by a statue of Justice. The north, south, and west facades of the building exhibit the dominant features of the front facade, including stone banding, groups of arched and rectilinear transomed windows, and corner quoins. A wooden cornice circumvents the building above the second story.

The tower, originally one story taller, was damaged in a storm and rebuilt in 1920, according to plans of Mankato architect Albert Schippel. The courthouse was enlarged and remodeled in 1975. At that time, rectangular additions were constructed utilizing materials similar to the original on the north and south facades. The interior was completely remodeled in 1975.

JAN 15 1981

Description - continuedLeSueur County Jail (1914)

The two story brick LeSueur County Jail was designed by the Mankato architect Albert Schippel and constructed in 1914 by J.B. Nelson Construction Co., also of Mankato. The Building sits on a rusticated stone foundation, and smooth stone sills and lintels of the irregular rectilinear fenestration create a polychrome effect on the red brick. Dominant features of the building are the three story circular tower at the northeast corner and the red tile combination hip and gable roof. The tower features third story arched windows, continuous stone bands, and a brick corbel course, and terminates in a flared conical tile roof with hipped dormers and finial. Hipped dormers are located on the north, south, and east facades, and a three sided window bay is at the southeast corner. The rear section of the jail has a gable roof and barred windows on the first and second stories. Entrances located on the east, north, and south facades include rusticated stone rails and steps leading to a flat roofed portico.

Exterior alterations of the jail building are limited to the enclosure of the entry porticos on the north and south facades and the addition of aluminum windows. The interior has been partially remodeled but retains many original features. Constructed for use as the county jail and sheriff's residence; the building now houses the county jail and the sheriff's residence.

SIGNIFICANCE:

The LeSueur County Courthouse and Jail are significant as the seat of county government since the turn of the century and as the best representatives of the role that county government has played in the location and development of the city of LeCenter. The county seat was first located at the city of LeSueur. It remained there until 1875, although there was periodic agitation to move it to Lexington or Cleveland. In 1875, the supreme court ordered that it be moved to Cleveland, where it remained for one year. The next year it was again moved to the new town of LeSueur Center (now simply LeCenter), in a novel solution to the recurring and familiar county seat battle. LeSueur Center was platted in December 1876 at a location near the geographic center of the county by the LeSueur Center Land Company. Platted specifically as a county seat, the company's townsite focused on a courthouse square and utilized the names of the county's townships and villages as street names. Initially, the county leased a building which the company had erected for courthouse purposes. The county eventually purchased the building and used it until the present structure was constructed in 1896. The first jail was situated on the courthouse square northwest of the courthouse; the present building was constructed in 1914 when improved facilities were needed. The scale and attention to popular designs for courthouses and jails of the period mark these buildings as prominent local landmarks.

BIBLIOGRAPHY:

Gresham, William G., ed., History of Nicollet and LeSueur Counties, Minnesota, Indianapolis: B.F. Bowen & Co., Inc., 1916.

LeCenter, Minnesota, Formerly LeSueur Center, 75th Anniversary, 1890-1965, LeCenter, 1965.

JAN 15 1981

Property

Le Sueur County Multiple Resource Area

DUG

State

MN Le Sueur

Working Number

1/15/81/12

2/4/81 - 3/1/81

TECHNICAL

need level significance and acreage

CONTROL

Photos

7

Maps

3

HISTORIAN

The six publicly-owned resources of 17 NR-eligible properties of Le Sueur County are being nominated at this time. As with NW's other MRE nominations this one is carefully documented - for methodology for significance of individual buildings, for history

ARCHITECTURAL HISTORIAN

Accept
h McClelland
2-17-81

of survey area - and is not intended as a comprehensive survey of all potentially eligible properties (see disclaimer). Resources date from 1850's when county was first settled by Euro-Americans.

ARCHEOLOGIST

and developed as agriculture, through railroad expansion of late 19th century when prosperity is seen in many fine public buildings - courthouses, town halls, & public schools. Two bridge engineering structures reflect once-common elements that are rapidly disappearing - a Pratt-truss bridge (moved to present site in 1929) and a wooden walk tower.

OTHER

HAER

Accept: Bridge #4846 (1895, 1896)
Elysian Water Tower (1895)
Elysian Public School (1895)

Inventory _____
Review _____

Le Sueur Co. Courthouse and Jail (1896, 1914)
Kasota Village Hall (1898)
Kasota Township Hall (1889)

REVIEW UNIT CHIEF

BRANCH CHIEF

KEEPER

Accept
Grover
2/17/81

National Register Write-up
Federal Register Entry

2.2-82

Send-back _____
Re-submit _____

Entered FEB 17 1981



03758
5

LeSueur County Courthouse
LeCenter, MN; LeSueur County
Britta Bloomberg
1980

JAN 15 1981

Minnesota Historical Society, 690
Cedar Street, St. Paul, MN 55101
Southwest
03758/5

LeSUEUR COUNTY MULTIPLE RESOURCE AREA
LeSueur County, MN

FEB 17 1981

NOTICE: This material may be protected
by copyright law (Title 17 U. S. Code).

FROM THE COLLECTIONS OF THE
MINNESOTA HISTORICAL SOCIETY
THIS PHOTOGRAPH IS FOR REFERENCE USE
ONLY. IT MAY NOT BE REPRODUCED OR
SOLD WITHOUT WRITTEN PERMISSION



LeSueur County Jail
LeCenter, MN; LeSueur County
Britta Bloomberg
1980

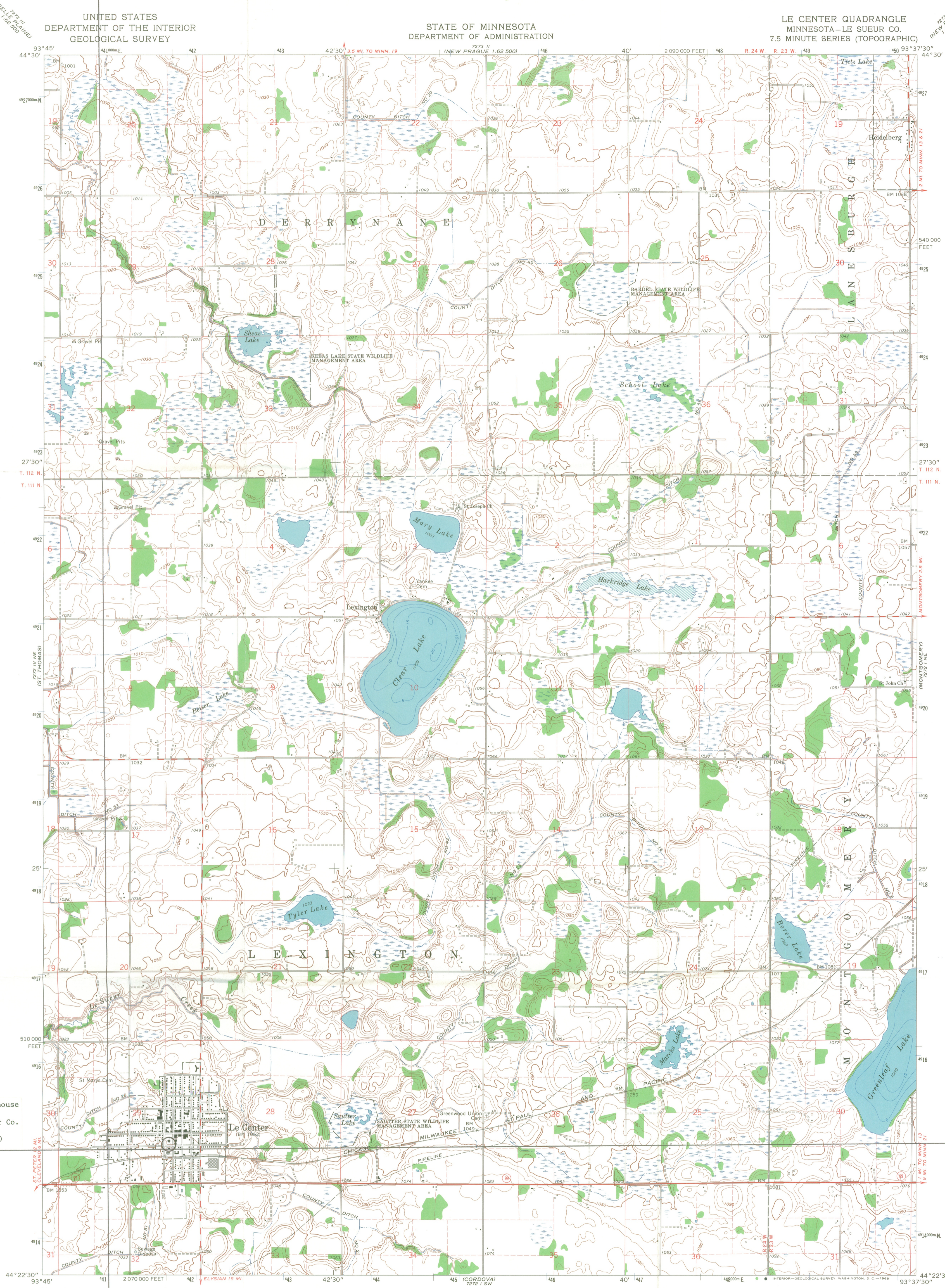
JAN 15 1981

Minnesota Historical Society, 690
Cedar Street, St Paul, MN 55101
northwest
03758/18

03758
18

NOTICE: This material may be protected
by copyright law (Title 17 U. S. Code).

FROM THE COLLECTIONS OF THE
MINNESOTA HISTORICAL SOCIETY
THIS PHOTOGRAPH IS FOR REFERENCE USE
ONLY. IT MAY NOT BE REPRODUCED OR
SOLD WITHOUT WRITTEN PERMISSION



LeSueur County Courthouse
and Jail
LeCenter, MN; LeSueur Co.
UTM References
15 / 441700 / 4915050

Mapped, edited, and published by the Geological Survey

Control by USGS and USC&GS

Topography by photogrammetric methods from aerial
photographs taken 1964. Field checked 1966

Depth curves and soundings from charts furnished
by Minnesota Department of Conservation

Polyconic projection. 1927 North American datum
10,000-foot grid based on Minnesota coordinate system, south zone
1000-meter Universal Transverse Mercator grid ticks,
zone 15, shown in blue

Fine red dashed lines indicate selected fence and field lines where
generally visible on aerial photographs. This information is unchecked

SCALE 1:24,000

1 0 1000 2000 3000 4000 5000 6000 7000 FEET
1 KILOMETER

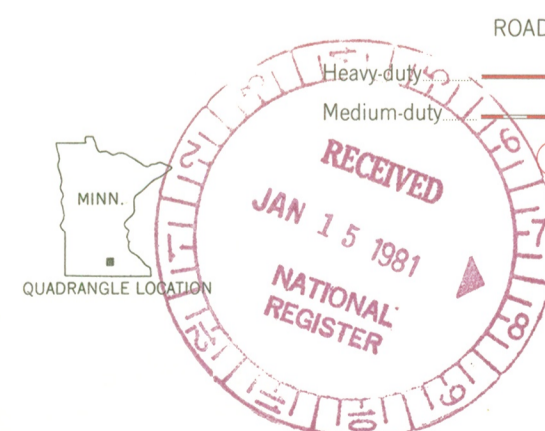
CONTOUR INTERVAL 10 FEET
DATUM IS MEAN SEA LEVEL



THIS MAP COMPLIES WITH NATIONAL MAP ACCURACY STANDARDS
FOR SALE BY U.S. GEOLOGICAL SURVEY, DENVER, COLORADO 80225, OR WASHINGTON, D. C. 20242
A FOLDER DESCRIBING TOPOGRAPHIC MAPS AND SYMBOLS IS AVAILABLE ON REQUEST.

ROAD CLASSIFICATION

- Heavy-duty
- Medium-duty
- Light-duty
- Unimproved dirt
- State Route



LE CENTER, MINN.
N4422.5—W9337.5/7.5

1966
AMS 7272 1 NW—SERIES V872

FEB 17 1981

73B