

544

United States Department of the Interior
National Park Service

National Register of Historic Places
Registration Form

This form is for use in nominating or requesting determinations for individual properties and districts. See instructions in *How to Complete the National Register of Historic Places Registration Form* (National Register Bulletin 16A). Complete each item by marking "x" in the appropriate box or by entering the information requested. If an item does not apply to the property being documented, enter "N/A" for "not applicable." For functions, architectural classification, materials, and areas of significance, enter only categories and subcategories from the instructions. Place additional entries and narrative items on continuation sheets (NPS Form 10-900a). Use a typewriter, or computer, to complete all items.

1. Name of Property

historic name Walker Branch Library

other names/site number _____

2. Location

Street & number 2901 Hennepin Ave. S. not for publication N/A

city or town Minneapolis vicinity N/A

state Minnesota code MN county Hennepin code 053 zip code 55408

3. State/Federal Agency Certification

As the designated authority under the National Historic Preservation Act, as amended, I hereby certify that this nomination request for determination of eligibility meets the documentation standards for registering properties in the National Register of Historic Places and meets the procedural and professional requirements set forth in 36 CFR Part 60. In my opinion, the property meets does not meet the National Register criteria. I recommend that this property be considered significant nationally statewide locally. (See continuation sheet for additional comments.)

Ian R. Stewart 4/20/00
Signature of certifying official/Title Ian R. Stewart Date
Deputy State Historic Preservation Officer
Minnesota Historical Society
State or Federal agency and bureau

In my opinion, the property meets does not meet the National Register criteria. (See continuation sheet for additional comments.)

Signature of certifying official/Title Date

State or Federal agency and bureau

4. National Park Service Certification

- I hereby certify that the property is:
- entered in the National Register.
 See continuation sheet
- determined eligible for the National Register.
 See continuation sheet
- determined not eligible for the National Register.
- removed from the National Register.
- other, (explain:)

Elsa W. Beall 5.26.00
Signature of the Keeper Date of Action

Walker Branch Library
Name of Property

Hennepin County MN
County and State

5. Classification

Ownership of Property

(Check as many boxes as apply)

- private
- public-local
- public-State
- public-Federal

Category of Property

(Check only one box)

- building(s)
- district
- site
- structure
- object

Number of Resources within Property

(Do not include previously listed resources in the count.)

Contributing	Noncontributing	
1		buildings
		sites
	1	structures
1		objects
2	1	Total

Name of related multiple property listing

(Enter "N/A" if property is not part of a multiple property listing.)

N/A

Number of contributing resources previously listed in the National Register

0

6. Function or Use

Historic Functions

(Enter categories from instructions)

Education: Library

Current Functions

(Enter categories from instructions)

Social: Civic

7. Description

Architectural Classification

(Enter categories from instructions)

Late 19th and Early 20th Century

Revivals: Neo-classical Revival

Materials

(Enter categories from instructions)

foundation Concrete

walls Brick

Limestone

roof Asphalt

other _____

Narrative Description

(Describe the historic and current condition of the property on one or more continuation sheets.)

United States Department of the Interior
National Park Service

National Register of Historic Places
Continuation Sheet

Walker Branch Library
Minneapolis, Hennepin County, Minnesota

Section Number: 7 Page: 1

7. DESCRIPTION

The Walker Branch of the Minneapolis Public Library is located on the eastern side of Hennepin Avenue, about one-half block north of Lake Street, in Minneapolis' Uptown commercial district. It stands among commercial properties, most of which face either Hennepin Avenue or Lake Street. Residential neighborhoods surround this commercial cluster. About 100' north of the library building is the former Chicago, Milwaukee, and St. Paul railroad corridor, a below-street-grade trackbed that is the proposed site of a bicycle and pedestrian path. Between the trackbed and the library property is former West 29th Street, a vacated city street that now serves as the asphalt-paved entrance to a large municipal parking lot located east of the library. "The Mall," a four-block-long parkway connecting Hennepin Avenue with Lake of the Isles, runs westward from Hennepin Avenue near the front of the library. Commercial buildings stand south of the building, and across the street to the southwest is the neighborhood's new branch library, the Walker Community Library, which opened in 1981.

The Walker Branch was designed by Minneapolis architect Jerome Paul Jackson and completed in 1911. The contractor was J. and W. A. Elliott. It is a one story, brick, Neo-classical style building that displays a balanced composition of a central pedimented portico and two symmetrical, pedimented, gabled forms that extend laterally. The building is faced with light brown, Roman brick laid in 9-course American bond. It has smooth, tan limestone trim. There are brick pilasters with simple limestone bases and capitals at the corners of the building and between the window openings on the gable ends. The flat-roofed portions of the library have simple parapet walls topped by smooth limestone coping.

At the center of the main facade is a pedimented portico supported by two fluted, four-volute, Ionic limestone columns and two brick pilasters with smooth limestone capitals and bases. The pediment has a brick-faced tympanum. The words "Minneapolis Public Library" are incised in the frieze of the portico, and there is a low limestone balustrade with double-urn-shaped balusters across the front of the porch. The library's main entrance has a Classically-inspired limestone surround with an ornate entablature with corbels and the words "Walker Branch" incised in the frieze. The entrance retains a double-leaf wooden door with single panes of glass. Above the door is a single transom light.

The building has rectangular window openings with smooth limestone sills and continuous limestone lintels. Some of the window openings are filled with original 1/1 sash, and some with

United States Department of the Interior
National Park Service

National Register of Historic Places
Continuation Sheet

Walker Branch Library
Minneapolis, Hennepin County, Minnesota

Section Number: 7 Page: 2

modern, metal-framed, 1/1 sash. The building's combination flat and gabled roof is covered with rolled asphalt. The upper portion of the library's large brick chimney has been rebuilt.

The pedimented forms that extend north and south from the center of the building have brick pilasters that support the building's stone and brick entablature. There are flat-roofed sun rooms located at the northeastern and southeastern corners of the building which provided cooler reading rooms in the era before air conditioning. The sun rooms have rectangular window openings separated by limestone pilasters. One the northern facade near the rear of the building is a basement entrance with a modern metal-framed door and lights. (A concrete ramp along the northern side wall leads to this entrance.) Modern lamps were attached to the exterior walls of the building circa 1984 to illuminate the property. A low, metal shed has also been added to the southeastern corner.

The main facade of the library was altered circa 1984. The original stone steps to the portico were replaced by three separate staircases: two brick-sided staircases that lead up to the portico, and one, centrally-located staircase that descends to the basement level.

The library fills most of its site. A simple wrought iron fence with balls at the top of the major supports runs along the western and northern sides of the lot. (The fence is Contributing to the property.) Near the northwestern corner of the property, the fence joins a short section of 6'-tall brick wall (built circa 1984) that separates the library from the asphalt-paved parking lot entrance to the north. The northwestern and southwestern corners of the lot, located within the iron fence, were paved with exposed aggregate concrete circa 1984. There is a small area of grassy lawn at the southeastern corner of the lot and one deciduous tree near the northwestern corner. Standing at the southwestern corner is a small Non-contributing structure that was built circa 1984 as a restaurant beverage stand. The structure has a simple cornice that was designed to help it blend with the library.

The interior of the main entrance foyer has a terrazzo floor and an inner double-leaf door and single transom light that match the exterior door. Two single-leaf doors in the foyer lead to small restrooms.

Most of the first floor of the building is occupied by a large reading room. The interior has plaster walls, classical detailing in the ceiling, and pilasters with simple capitals. The main reading room contains two fireplaces that are faced with light brown brick with oak mantelpieces. The oak woodwork around the windows, doors, and fireplaces is darkly stained

United States Department of the Interior
National Park Service

National Register of Historic Places
Continuation Sheet

Walker Branch Library
Minneapolis, Hennepin County, Minnesota

Section Number: 7 Page: 3

and varnished. The room retains original wall-mounted bookshelves and three hanging circular lights that are probably original. (Most of the rest of the lights are modern florescent lights hanging from the ceiling.) The librarians' circulation desk is located across the eastern side of the room, flanked by two plaster columns with Ionic capitals. There is a mezzanine across the eastern side of the reading room (above the circulation desk) that houses offices. Two former sun rooms, now offices, are located at the northeastern and northwestern corners of the building. (They were last used by the library as an office and a periodical room.) The stairway to the basement is located at the northeastern corner of the main reading room. At the time that the library sold the building in 1980, the basement level contained two meeting rooms, restrooms, and small work rooms.

8. Statement of Significance

Applicable National Register Criteria

(Mark "x" in one or more boxes for the criteria qualifying the property for National Register listing.)

- A** Property is associated with events that have made a significant contribution to the broad patterns of our history.
- B** Property is associated with the lives of persons significant in our past.
- C** Property embodies the distinctive characteristics of a type, period, or method of construction or represents the work of a master, or possesses high artistic values, or represents a significant and distinguishable entity whose components lack individual distinction.
- D** Property has yielded, or is likely to yield, information important in prehistory or history.

Criteria Considerations

(Mark "x" in all the boxes that apply.)

Property is: N/A

- A** owned by a religious institution or used for religious purposes.
- B** removed from its original location.
- C** a birthplace or grave.
- D** a cemetery.
- E** a reconstructed building, object, or structure.
- F** a commemorative property.
- G** less than 50 years of age or achieved significance within the past 50 years.

Areas of Significance

(Enter categories from instructions)

- Education
- Social History
-
-
-
-
-

Period of Significance

1911-1949

Significant Dates

1911

Significant Person

(Complete if Criterion B is marked above)

Countryman, Gratia Alta

Cultural Affiliation

N/A

Architect/Builder

Jackson, Jerome Paul (architect)
Elliott, J. and W. A. (builder)

Narrative Statement of Significance

(Explain the significance of the property on one or more continuation sheets.)

9. Major Bibliographical References

Bibliography

(Cite the books, articles, and other sources used in preparing this form on one or more continuation sheets.)

Previous documentation on file (NPS):

- preliminary determination of individual listing (36 CFR 67) has been requested
- previously listed on the National Register
- previously determined eligible by the National Register
- designated a National Historic Landmark
- recorded by Historic American Buildings Survey # _____
- recorded by Historic American Engineering Record # _____

Primary location of additional data:

- State Historic Preservation Office
- Other State agency
- Federal agency
- Local government
- University
- Other

Name of repository:
Minneapolis Public Library

United States Department of the Interior
National Park Service

National Register of Historic Places
Continuation Sheet

Walker Branch Library
Minneapolis, Hennepin County, Minnesota

Section Number: 8 Page: 1

8. STATEMENT OF SIGNIFICANCE

The Walker Branch of the Minneapolis Public Library, built in 1911, is eligible for the National Register under Criterion A (significance to the broad patterns of our history) in the areas of Education and Social History, and under Criterion B (significant person) for its association with Gratia Alta Countryman, chief of the Minneapolis Library (MPL) from 1904-1936. The Walker Branch is important as one of 14 public library branch buildings that were built and acquired in Minneapolis during the years 1894-1936, and as one of 10 of those buildings which are still standing. The building is associated with the extensive outreach program of the Minneapolis Public Library, a well-orchestrated set of services that had a significant impact on the educational and cultural development of the city and its neighborhoods. The building is one of nine extant branch library buildings in Minneapolis that comprise the standing structures that are most closely associated with the career of Gratia Alta Countryman, longtime head of the Minneapolis Public Library and a leading figure in the development of the public library movement nationwide. The Walker Branch is significant within the statewide historic context entitled "Urban Centers, 1870-1940," and within the "Civic" historic context established by the City of Minneapolis' Heritage Preservation Commission.

FOUNDING OF THE MINNEAPOLIS PUBLIC LIBRARY

The broad movement to establish public libraries in the U.S. began in the 1870s, a time when relatively few public libraries existed and when most members of the general public had no access to library books. Instead, most libraries were private facilities that were open only to those who could afford to purchase a "subscription" or membership privileges to borrow books. The Minneapolis Public Library (MPL) descended from one of these private subscription libraries called the Minneapolis Athenaeum. The Athenaeum had been established in 1859 (a year after statehood) as the Young Men's Library Association.

In the 1870s several leading members of the Athenaeum, including wealthy Minneapolis businessman T. B. Walker, proposed establishing a free public library in an effort to serve more people and to influence more effectively the intellectual and cultural development of the city. In 1884 the Athenaeum and the City of Minneapolis agreed to create a public library, and on March 2, 1885, the Minneapolis Public Library was founded with a governing board that operated as an independent branch of city government. (The St. Paul Public Library, which had opened in January of 1883, had been formed in 1882 from a similar private library organization.) The first MPL board of directors was comprised of influential businessmen led by T. B. Walker. The

United States Department of the Interior
National Park Service

National Register of Historic Places
Continuation Sheet

Walker Branch Library
Minneapolis, Hennepin County, Minnesota

Section Number: 8 Page: 2

mayor of Minneapolis, the president of the University of Minnesota, and the president of the Minneapolis Board of Education served as ex officio members of the board.

The Minneapolis Athenaeum's 20,000 books formed the nucleus of the Minneapolis Public Library's collection, and proceeds from the Athenaeum's sale of its own building helped finance the construction of the MPL's first building. The new library (soon called the central library) was a Richardsonian Romanesque style structure built in 1886-1889 at the corner of Hennepin Avenue and Tenth Street downtown. The library opened to the public in December of 1889 with 30,000 books, making it the eighteenth largest public library in the nation. By 1890, 13,000 library cards had been issued, 200,000 books had been borrowed, and the library was open seven days per week. In 1891 circulation at the MPL ranked sixth in the nation, and by 1899 the per capita circulation was the highest in the country (Benidt 1984:56). The original building at Hennepin and Tenth served as the central library for 72 years until January of 1961 when the MPL's current central building (now called the Minneapolis Public Library and Information Center) opened a few blocks away on Nicollet Avenue. The original library was razed the same year.

GRATIA COUNTRYMAN

Gratia Alta Countryman (1866-1953) served as head librarian of the Minneapolis Public Library for 32 years, from 1904 to 1936. She was the system's third head librarian, succeeding George Herbert Putnam, who served from 1885-1892, and James K. Hosmer, who was head from 1892-1904. Countryman led the institution during the period that most of its outreach services, including the branch libraries, were established, and when 13 of the system's 14 pre-1960 branch buildings were completed or acquired.

Countryman had been born in Hastings in 1866. Her father was a Hamline University-educated teacher, and Gratia and her three siblings also became college-educated. In 1884 her family moved from Hastings to Minneapolis so that Gratia and her sister could attend the University of Minnesota. At the university Countryman helped found the Women's Military Drill Team (which was the first campus organization to provide physical fitness for women), was vice president of the Hermean Society (a literary group), and was the first woman to enter the university's annual Pillsbury oratorical contest (Rohde 1998:174).

Countryman graduated in 1889 at the age of 23. With recommendations from university president Cyrus Northrop and professor William Watts Folwell, she was hired by the Minneapolis Public Library, which was just preparing to open its new building. Countryman

United States Department of the Interior
National Park Service

**National Register of Historic Places
Continuation Sheet**

Walker Branch Library
Minneapolis, Hennepin County, Minnesota

Section Number: 8 Page: 3

joined head librarian Herbert Putnam and a staff of five others. She first worked at classifying the library's 30,000 volumes. In 1890 she was appointed head of the cataloguing department, and in 1892 she became assistant librarian under the new chief, James K. Hosmer. Within a short time Hosmer, who was not a professional librarian and devoted much of his time to research and writing, apparently turned the daily management of the library over to Countryman (Rohde 1998:176).

James Hosmer resigned as head librarian in March of 1903. Although Countryman was highly recommended by Putnam and Hosmer to replace him, the MPL board of directors initially favored hiring a man, in large part because it was not customary in 1903 for women to hold executive positions at such a level of responsibility. During the process Countryman received numerous professional and public endorsements, many of which advised the board not to let her gender negatively sway their choice (Ostendorf 1984:386). After difficult deliberation, the library board voted 6-3 on November 7, 1903, to hire the 37-year-old woman as chief administrator. She assumed the helm on February 1, 1904, and was the first woman to head a large public library in a major U.S. city. (In the mid-1970s she was still one of few women to have held such a position (Rohde 1998:173).) Countryman's salary was one-third less than Hosmer's had been, simply because she was female. In addition, the position of assistant librarian was abolished so that, in essence, she was asked to do twice Hosmer's work for two-thirds his salary (Rohde 1998:177). The salary inequity, coupled with the doubled workload, created a public and professional uproar, both locally and nationally. Despite the outcry, however, the board did not increase her pay.

Countryman proved to be a dedicated leader who effectively guided the development of the Minneapolis Public Library during its most expansionary period. Library historian Bruce Benidt writes, "No individual had a more dynamic and positive effect on the library system of Minneapolis, and few played such a significant role in the cultural development of the city" (Benidt 1984:72). Library science professor Nancy Freeman Rohde writes that, although the MPL's first two head librarians had laid the groundwork for the institution's success, "It was Gratia Countryman, however, with her strong commitment to making the public library a vital part of the community, who expanded library services until they touched nearly all aspects of life in the city" (Rohde 1998:181). Rohde also writes:

In 1904 when she took charge, there were 43 persons on the staff and the system consisted of the main library, 3 branches, and 10 stations, mostly in drugstores. When she retired in 1936, there were 250 people on the staff (excluding WPA workers on professional projects), and over 350 distributing agencies including branches, stations, classrooms,

United States Department of the Interior
National Park Service

**National Register of Historic Places
Continuation Sheet**

Walker Branch Library
Minneapolis, Hennepin County, Minnesota

Section Number: 8 Page: 4

business firms, factories, and hospitals. The book collection had grown by 500,000 volumes and the circulation from 500,000 to over 3,600,000. The budget had more than quadrupled. These figures, however, tell little of the innovations in service which helped the library earn a local and national reputation as the city's 'most human institution' (Rohde 1998:180).

Countryman had been an enthusiastic spokesman for the public library movement since at least 1890. She believed that tax-supported, free, public libraries had tremendous potential to foster literate and knowledgeable citizens, and that such an educated electorate was essential to a smoothly-running democracy. She championed the pluralism of public libraries. Robert Gordon Freestone writes that "Countryman's aim was to create a 'people's library' that was, at least to her way of thinking, anti-elitist" (Freestone 1977:199). Countryman wrote in 1905 in her first annual report:

A public library is the one great civic institution supported by the people which is designed for the instruction and pleasure of all the people without age limit, . . . rich and poor, . . . educated and uneducated, without culture limit. . . . It should be 'all things to all men' in the world of thought (quoted in Ostendorf 1984:390).

Countryman wrote in 1918 that "The library is a great, live, working school for the education of all the people" (quoted in Rohde 1998:186). She explained that "The rich and well-to-do use the library only occasionally and for emergency calls. The middle classes and the poorer classes form the great body of borrowers; they are the beneficiaries" (quoted in Benidt 1984:121).

Countryman also saw libraries as institutions that could address citizens' social needs, a relatively new idea at a time when many libraries were stodgy, somber places for warehousing reference books, and when "only in exceptional circumstances did libraries actively and integrally participate in the social life of their communities" (Freestone 1977:199). Countryman was at the forefront of a national Progressive movement which regarded public libraries as natural places to expand "settlement work" and similar early social services to the poor. She wrote in 1905 in her first annual report:

The library should be a wide-awake institution for the dissemination of ideas, where books are easily accessible and obtainable. It should be the center of all the activities of a city that lead to social growth, municipal reform, civic pride and good citizenship. It should have its finger on the pulse of the people, ready to second and forward any movement (quoted in Ostendorf 1984:390).

United States Department of the Interior
National Park Service

**National Register of Historic Places
Continuation Sheet**

Walker Branch Library
Minneapolis, Hennepin County, Minnesota

Section Number: 8 Page: 5

Paul John Ostendorf writes: "[Countryman's] philosophy was that of a missionary to the common people. Her attitude was like that of a social worker encouraging the needy to make use of the benefits held out to them. As early as 1901 she insisted that a library must be a dynamic force in the community" (Ostendorf 1984:389-390). Nancy Freeman Rohde explains that,

Believing that books were stimulating, inspiring, curative, and regenerative and that they should be freely available to anyone who needed them, [Countryman] put into practice a humanitarian philosophy that saw the public library as an agency for social betterment and uplift, a force against laxness in morals, and an institution for lifelong education (Rohde 1998:182).

The Minneapolis Public Library's branch buildings, scattered in neighborhoods throughout the city, were among Countryman's proudest accomplishments and stand today as testimony to her work. While the first branches had been established under head librarians Putnam and Hosmer, Countryman's emphasis on outreach was much stronger than that of her predecessors (Freestone 1977:196, Benidt 1984:54). Countryman was head librarian when the majority of the library branches were established and when most of the pre-1960 branch buildings were built. Only the first pre-1960 branch building -- the North Side Branch (built 1890) -- was built before Countryman became head librarian in 1904. (Although construction of the second branch building began before Countryman was named head librarian, she supervised its completion and the establishment of service in the new building.) The last pre-1960 building to be built or acquired -- the Longfellow Branch -- was acquired in 1936, the year Countryman retired. A *Minneapolis Tribune* editorial published at her death states that Countryman "left countless library users in debt because she planned so well against the future's needs" (Rohde 1998:189).

In addition to guiding the development of the Minneapolis Public Library, Countryman was a leader in the establishment and promotion of libraries throughout Minnesota and nationwide. She spoke frequently within the state and across the country about the virtues of public libraries and about Minneapolis' programs. In 1891 she was an organizer of the Minnesota Library Association (MLA), formed to promote the establishment of both permanent and traveling libraries. She became secretary of the MLA in 1892, and was elected president in 1905. Countryman was instrumental in securing state funding for public libraries and in establishing the Minnesota Public Library Commission, a five-member legislative body formed in 1899 to promote library development. Countryman was one of the commission's five original members and served as its recording secretary for its entire existence from 1899 to 1919, after which it was absorbed by the Minnesota Department of Education. Nationally, Countryman was a founding

United States Department of the Interior
National Park Service

National Register of Historic Places
Continuation Sheet

Walker Branch Library
Minneapolis, Hennepin County, Minnesota

Section Number: 8 Page: 6

member of the American Library Association (ALA) in 1898, and addressed the ALA's first national conference that year. In 1902 she was elected to a five-year term on the ALA's governing council, and in 1908 she was elected to the first of two terms as vice president (in addition to serving as national conference chair). Countryman was president of the ALA at the depth of the Depression in 1934. She spoke at, and served as an ALA delegate to, the Second International Library and Bibliographic Congress held in Madrid in 1935. During World War II she was one of seven members nationwide that comprised the ALA's National War Service committee. Paul John Ostendorf writes, "by 1916 she had established her reputation as a leader in the library world. Of all the library leaders considered in Minnesota during the period from 1849 to 1916, there is no other person who takes even a close second to Countryman as the most dynamic force in the public library movement" (Ostendorf 1984:378-379).

In addition to her library career Countryman was active in many civic organizations, particularly those that addressed social welfare. She was an organizer, charter member, and director of both the Women's Club of Minneapolis and the College Women's Club. She was a founding member and first president of both the Minneapolis Women's Welfare League (a social service organization serving women) and the Business Women's Club (founded in 1919). In 1938 she chaired the national convention of the Women's International League for Peace and Freedom, which was held in Minneapolis that year (Rohde 1998:187). She was a member of the Better Minneapolis Committee, the Minneapolis Society of Fine Arts, Phi Beta Kappa, and Delta Gamma (Foster 1924:69). She helped organize and served on dozens of committees and groups in Minneapolis. Her contemporaries wrote that "No public welfare organization in the community was complete without Miss Countryman's name on its board of directors" (quoted in Rohde 1998:173).

Countryman received numerous awards in recognition of a life dedicated to public service. In 1931, for example, she was the first woman to receive the Minneapolis Interracial Service Council's "Civil Service Honor Medal" for her assistance to foreign-born Minneapolis residents. In 1932 she was awarded an honorary Master of Arts Degree by the University of Minnesota. (This was considered by Countryman to have been her greatest honor. She was only the fourth person to have received an honorary degree from the university. The other three were former university presidents Folwell and Vincent and former U.S. Secretary of State Frank B. Kellogg (Pejsa 1995:218).) Countryman was included in the 1924 volume *Who's Who Among Minnesota Women* (Foster 1924). She is also one of sixteen women featured in the Minnesota Historical Society's publication *Women of Minnesota: Selected Biographical Essays* (1977, rev. ed. 1998).

United States Department of the Interior
National Park Service

National Register of Historic Places
Continuation Sheet

Walker Branch Library
Minneapolis, Hennepin County, Minnesota

Section Number: 8 Page: 7

Gratia Countryman retired from the Minneapolis Public Library in 1936 at age 70. In 1938 she was rehired by the library to organize and supervise a multi-year Works Progress Administration (WPA) project. From 1938-1941 she supervised a staff of more than 200 WPA workers who indexed the *Minneapolis Journal* newspaper and worked on several other projects. On July 26, 1953, Countryman died at the age of 87.

EXTENSION SERVICES OF THE MINNEAPOLIS PUBLIC LIBRARY

During Gratia Countryman's long service as head librarian, the Minneapolis Public Library expanded to serve the entire city. Countryman led the establishment of the institution's numerous library extension services, frequently quipping, "This isn't the century when Abraham Lincoln walks twelve miles for a book" (Benidt 1984:80). Although the Minneapolis Public Library was creating outreach services at the same time that they were being established by other libraries nationwide, Countryman expanded the concept much farther than did librarians in most cities. She wrote in 1905:

It is obvious that if a library is to perform its functions of elevating the people, it will need to adopt methods other than buying a fine collection of books and housing them in an attractive building and then waiting in a dignified way for people to come. The scholarly and studious will come as surely as the needle turns to the north, but the others will wait until the library goes to them (quoted in Benidt 1984:78).

The Minneapolis Public Library outreach programs included several kinds of services, with the branch library buildings being the largest of these undertakings. Among the simplest were delivery or deposit stations and reading rooms. Delivery or deposit stations, the first of which were already operating when Countryman became head librarian, were sites where a rotating collection of books was "deposited" for patrons to read or borrow. (Many of the first deposit stations were located at the front counters of drug stores.) Card holders could also order books from the central library that would be delivered to a station the following afternoon. In 1900 alone, 138,348 books circulated through the Minneapolis Public Library's deposit stations (Freestone 1977:96, 98). Reading rooms were similar to deposit stations but provided patrons with a quiet environment and tables and chairs, along with a supply of books and periodicals. Reading rooms were often located in rented storefronts or in public or quasi-public buildings. Ten deposit stations had been established before Countryman became chief librarian in 1904. There were 65 deposit stations in 1918 and, when Countryman retired in 1936, the library had more than three hundred reading rooms and stations.

United States Department of the Interior
National Park Service

**National Register of Historic Places
Continuation Sheet**

Walker Branch Library
Minneapolis, Hennepin County, Minnesota

Section Number: 8 Page: 8

Countryman expanded MPL extension services by taking books to any location where she saw potential readers. In 1905, for example, deposit stations were established in the MPL's first two business sites, the Twin City Telephone Company and the Cream of Wheat factory, so that workers too busy to visit the library could read books. By 1911 there were 20 deposit stations in factories and businesses and, by 1936, 53 business sites. In 1906 books were placed in each of the city's fire stations to be read by fire fighters between calls. In 1910 Countryman opened a reading room at Bridge Square, a dilapidated part of downtown populated by inexpensive hotels and large numbers of unemployed and homeless men about whom Countryman said: "They have no homes, they have not even the privilege of a chair in many of the lodging houses; where shall they go in the daytime?" (quoted in Benidt 1984:79). Countryman was also concerned about the education of women. In 1913, in one of her many efforts to reach women, she placed collections in each of the city's eight telephone exchanges where most employees were female. In 1915 stations were opened in prisons, workhouses, jails, orphanages, and poor farms. In 1916 a Business and Municipal Branch Library was established downtown with books on advertising, banking, and business. In 1927 a Social Service Branch Library was also established downtown with books on social welfare, public health, and related fields. In 1923 hospital service began and, by 1927, books were being delivered to 14 hospitals. Small collections had also been established in public schools beginning in 1893. By 1936 there were collections and small libraries in dozens of school sites.

The Minneapolis Public Library also extended services to Hennepin County residents living outside the city of Minneapolis. In 1915 the library granted borrowing privileges to these county residents and, by 1916, 40 deposit stations had been established in the county. Truck delivery of books to farms and other locations began in 1922. (Bookmobile service within the city of Minneapolis started in 1939 after Countryman retired.) Also in 1922, Countryman helped establish the Hennepin County Library system, which was headquartered at the Minneapolis Public Library. Countryman served as the Hennepin County Library's first head librarian.

THE BRANCH LIBRARY BUILDINGS

The Minneapolis Public Library's branch buildings were the crown jewels of the library's extension services. Fourteen branch buildings were built (and acquired) by the MPL before 1960. (Additional branches were operated within rented quarters.) The 14 pre-1960 branch buildings were built (and acquired) during the years 1894-1936. Eight of the buildings were built for previously-existing branches, and six were built (and acquired) for newly-established branches, usually established in areas that had been previously served by deposit stations. Ten of

United States Department of the Interior
National Park Service

**National Register of Historic Places
Continuation Sheet**

Walker Branch Library
Minneapolis, Hennepin County, Minnesota

Section Number: 8 Page: 9

the 14 buildings are extant, and five are still in use as branch libraries. The 14 branch buildings are listed below:

Minneapolis Public Library Pre-1960 Branch Buildings

Branch Name	Building Opened
North Side (NRHP '77)	Jan. 1894
East Side/Pillsbury (NRHP '71)	Apr. 1904
* Camden Park/Webber Park	Jan. 1910
Walker	June 1911
* Seven Corners	1912
* Logan Park	June 1913
+ Franklin	Aug. 1914
* Central Avenue	Nov. 1915
+ Sumner	Dec. 1915
+ Thirty-sixth Street/Hosmer	Mar. 1916
East Lake	Feb. 1924
+ Roosevelt	Feb. 1927
+ Linden Hills	Feb. 1931
Longfellow (NRHP '69)	1937

* indicates building has been razed +indicates library in service in 2000

Nine of the extant branch library buildings are relatively small brick structures and the tenth, the Longfellow branch, is a woodframe Colonial Revival house that was acquired by the MPL for use as a library. Most of the branch buildings were designed in historical revival styles such as the Neo-classical Revival and the Tudor Revival. Most were designed by Minneapolis architects and a few were designed by outstate designers. Most of the buildings had a main floor that was divided into approximately three reading rooms that were naturally lit with numerous windows and, sometimes, with skylights. Most had a basement level that contained one or two meeting or lecture rooms. Each building also contained public restrooms, and small office and store rooms.

The MPL's first three branch libraries were established under the leadership of Herbert Putnam and James K. Hosmer. The first branch, the North Side Branch, was established in 1890 at neighborhood request in the basement of the newly-completed North High School, north of

United States Department of the Interior
National Park Service

**National Register of Historic Places
Continuation Sheet**

Walker Branch Library
Minneapolis, Hennepin County, Minnesota

Section Number: 8 Page: 10

downtown. The second branch, the South Side Branch (later named the Franklin Branch), was established in 1890 in a rented store south of downtown at Franklin Avenue and 17th Avenue South. The third branch, the East Side Branch (later named the Pillsbury Branch), was established in 1891 in Winthrop School on University Avenue Southeast.

The first branch building was constructed in 1894 for the North Side Branch. It is a Queen Anne style, brick building located at 1834 Emerson Ave. N. on land that had been donated by library board member Samuel Gale and Minnesota Supreme Court judge C. E. Vanderburgh. The building itself was partially funded by other private contributions. The North Side Branch still stands, although it is no longer used as a library. It was listed on the National Register on Dec. 7, 1977.

In 1904 the second branch library was erected, once again through philanthropic efforts. It was built for the East Side Branch, which was outgrowing its quarters in Winthrop School. Both the library's site and its new building were financed by former governor John Pillsbury, prompting the MPL to rename East Side as the Pillsbury Branch Library. This Beaux Arts style building still stands at the corner of University and Central avenues across the Mississippi River from downtown. It is no longer a library, and was listed on the National Register on March 11, 1971, as part of the St. Anthony Falls Historic District.

The MPL's first branch libraries (both those in rented quarters and those in their own buildings) were immediately successful. Combined circulation at the branches far surpassed that of the central library every year except 1890, the year after the central library had opened (Lincoln 1958:358). In his study of the development of the Minneapolis Public Library, Robert Gordon Freestone explains:

Branches proved to be one of the most successful of all the experiments [nationwide] (including open shelving [allowing patrons to browse through the books, rather than request each book from the librarian]) aimed at breaking down barriers between books and people. From the various factors thought to affect the propensity to read, physical accessibility was selected as the critical one. A working maxim emerged: more branches meant better community access to library services which meant higher rates of circulation which meant a more widespread distribution of library benefits which meant the library was doing a splendid job (Freestone 1977:27-28).

In her annual report to the library board in 1906, Countryman argued for more extension outlets:

United States Department of the Interior
National Park Service

**National Register of Historic Places
Continuation Sheet**

Walker Branch Library
Minneapolis, Hennepin County, Minnesota

Section Number: 8 Page: 11

When we analyze the circulation, it will be seen that the bulk of the increase comes from the Branches and Stations, and this will be increasingly true as Minneapolis continues to travel toward its suburbs. We cover so large a territory, and are acquiring so large a population of working people with our increasing factories, who settle in outlying regions, that your librarian believes that the time has come for entering upon a broader and more far-reaching policy of distributing stations (quoted in Freestone 1977:196).

In 1908 Countryman reported that the system needed at least ten new branch buildings as soon as money could be raised (Benidt 1984:93). Longtime library board president T. B. Walker shared Countryman's vision and the board generally supported her pursuit. Freestone notes:

Minneapolis was typical of most systems. Coupled with Countryman's expansionist plans, the Library generally seemed to assess its success in quantitative terms. The greater the number of distribution points, then the greater the physical accessibility of the Library, and therefore the greater the relevance of the Library to everyday life. The equation was simple and compelling: more is better. The number of distribution points and system circulation were always listed with great satisfaction in the Annual Reports (Freestone 1977:200).

The Minneapolis Public Library's third branch building opened in 1910 as a facility to be shared by the newly-established Camden Park Branch Library and the Minneapolis parks department. This Craftsman style structure was built in Camden Park (later called Webber Park) and was financed by the Charles Webber family. The library was located on the second floor of the building, while the first floor was used as a field house. In 1954 the library expanded to occupy the entire building and was renamed the Webber Park Branch Library. The building was razed in 1979. The Camden Park Branch is one of only four structures built as branch libraries that are no longer standing. (The others are the Seven Corners, Central Avenue, and Logan Park branch buildings.)

The fourth branch library building, the Walker Branch, opened in 1911 for a newly-established branch. It was the first branch building for which the library board assumed the entire cost of construction, although the site (near the corner of Hennepin Avenue and Lake Street) was donated by board president T. B. Walker (Freestone 1977:227). The Walker Branch is a Neo-classical Revival style structure that is now owned by a non-profit group. (A new Walker Community Library building was completed across the street in 1981.) The next branch building to be built, the Seven Corners Branch, was a Tudor Revival style library built in 1912 for a branch that had been established in 1906. The Seven Corners Branch was the first building to be

United States Department of the Interior
National Park Service

National Register of Historic Places
Continuation Sheet

Walker Branch Library
Minneapolis, Hennepin County, Minnesota

Section Number: 8 Page: 12

sited and constructed entirely with public funds. It was demolished in 1964 for highway construction and is one of the four structures built as branch libraries that are no longer standing.

By 1912 the city of Minneapolis was growing rapidly, and library services were expanding to keep abreast. The city's population had grown 49 percent between 1900 and 1910 and would grow another 26 percent between 1910 and 1920. All city services were amplified as residents of newly-developing areas lobbied for fire protection, parks, schools, and libraries. In 1911, the MPL's circulation broke the one million mark for the first time, with about 70 percent of the books circulating from the branches (Benidt 1984:98). In 1912 and, again in 1914, Minneapolis had the highest per capita circulation of any major city in the country, as it had in 1899. In 1915 the MPL had 14 branches, 25 deposit stations, 39 school libraries, 30 factory and business libraries, 21 collections in clubs, settlement houses, and halls, 9 in fire stations, and collections in each of the city's streetcar stations (Ostendorf 1984:311).

By 1910 Gratia Countryman was using criteria such as population distribution, the ethnic composition of neighborhoods, the location of streetcar lines, the location of parks and schools, petitions of residents, and circulation statistics to help determine the location of each delivery station and branch library. In 1911 she compiled information from police records, school officials, and charitable groups to make a "Race Map" of the city which she used to analyze population and ethnic distribution (Freestone 1977:226). In addition to the "Race Map," Countryman made circulation maps of the city which she used to further plan the growing system. (Countryman's original maps are still held by the Minneapolis Public Library.) This scientific approach to establishing services -- "planning by dots," as Freestone calls it -- placed Countryman at the forefront of the professionalization of library science and characterized her work throughout her career (Freestone 1977:230).

In 1913 the sixth branch library building, the newly-established Logan Park Branch, opened in a new field house in Logan Park in northeast Minneapolis. The building was constructed as a joint venture with the parks department, just as the Camden Park Branch Library had been. In 1957 the library was moved to rented quarters and renamed the Pierre Bottineau Branch Library. The field house was subsequently demolished. (Logan Park is one of the four structures built as branch libraries that have been demolished.)

The next four branch library buildings -- Franklin, Central Avenue, Sumner, and Thirty-sixth Street (later called Hosmer) -- were financed by a grant from Andrew Carnegie. They represent Minneapolis' only four Carnegie library buildings. The four are among the most ornate of the branch buildings, and were built in the Renaissance Revival and Tudor Revival styles. Three of

United States Department of the Interior
National Park Service

National Register of Historic Places Continuation Sheet

Walker Branch Library
Minneapolis, Hennepin County, Minnesota

Section Number: 8 Page: 13

the Carnegie buildings -- Franklin, Central Avenue, and Sumner -- were built for branch libraries that had been previously established. (Franklin had been established in 1890 as the South Side Branch, Central Avenue had been established in 1907 as the New Boston Branch, and Sumner had been established in 1912, just about the time the Carnegie grant was awarded.) The fourth building, the Thirty-sixth Street (Hosmer) Branch, was built for a newly-established branch. (In 1914, the year Franklin was built, the Minneapolis Public Library was operating 14 branches: five in their own buildings, two which shared public field houses with park programs, five in rented quarters, one in a school, and one in a settlement house (Freestone 1977:87, 91).)

Pennsylvania steel tycoon Andrew Carnegie had been funding library construction since 1886 (although most Carnegie grants were made after 1897). The Minneapolis Public Library had submitted requests to Carnegie for central library construction in 1902 and for branch buildings in 1909, but both had been denied. By the time of the next application, submitted by Countryman to the Carnegie Corporation in 1911, Countryman had surveyed city neighborhoods to gather demographic information, mapped the city's ethnic distribution and library circulation, and tabulated the results which she included within her application. In 1912 Countryman received official word of a forthcoming \$125,000 Carnegie grant to fund the construction of four branch buildings. The funds were contingent on a typical Carnegie arrangement whereby the City of Minneapolis would supply building sites and agree to allocate a specific annual amount for each library's operation. The \$125,000 grant was among the \$56 million donated by Carnegie for library construction worldwide during the years 1886-1919. Minneapolis was among 57 communities in Minnesota that received more than 60 library buildings through Carnegie gifts during this period (Jones 1997:129). In 1914, two years after Minneapolis' award, St. Paul received a grant for its three Carnegie branch libraries.

The four Carnegie-funded branch buildings were built as soon as land became available. The Franklin Branch, which opened in August of 1914, was completed first because a building site had been donated in 1913 by three members of the McKnight family. Construction of the other three branches waited until a bond issue was passed in 1914 for land acquisition. The Central Avenue Branch opened in November of 1915, the Sumner Branch opened one month later in December of 1915, and the Thirty-sixth Street Branch (later called Hosmer) opened three months after Sumner in March of 1916. The Franklin, Sumner, and Thirty-sixth Street branches are still standing and still house branch libraries. The Central Avenue Branch was razed in 1972 and replaced by the Northeast Branch Library, which opened in a new building in 1973. (Central Avenue is one of the four structures built as branch libraries in Minneapolis that are no longer standing.)

United States Department of the Interior
National Park Service

**National Register of Historic Places
Continuation Sheet**

Walker Branch Library
Minneapolis, Hennepin County, Minnesota

Section Number: 8 Page: 14

Each of the MPL branch libraries became a social and educational center in its respective neighborhood under the guidance of MPL staff. Clubs for children were formed in the libraries, and their basement meeting rooms were used for games, story hours, contests, lectures, and exhibits at a time when organized recreational activities for children were rare (Rohde 1998:184). Educational programs were also provided for women who, in 1921, became a new population of voters seeking to become better informed (Rohde 1998:185).

Minneapolis' large numbers of foreign immigrants were also frequent library patrons. Countryman once wrote that most adult immigrants were not reached by public schools, "but the library, because it is more informal and more inviting, and because it makes less strenuous demands upon tired men and women, can come into a more genial relation with them" (quoted in Benidt 1984:79-80). Countryman also, "in the 'spirit of internationalism,'" "urged a better understanding of the lifestyle of ethnic minorities" (Freestone 1977:202). Many MPL librarians, like Countryman, believed that libraries could offer important services to immigrants trying to assimilate into American society. The MPL branch and central libraries provided explanatory materials, English lessons, American history and civics classes, and informal assistance to those seeking to become naturalized. Each branch library was stocked with foreign-language books and periodicals appropriate to the national group living in each neighborhood. (The Minneapolis Public Library was, in fact, the first public library in the country to purchase books written in the languages native to the city's immigrant groups (Rohde 1998:184).) The Franklin Branch Library, for example, maintained an extensive, heavily-used collection of books and periodicals published in Scandinavian languages. The Sumner Branch Library, which estimated in 1916 that approximately 95 percent of its card holders were Jewish immigrants from Bohemia, Germany, Hungary, Romania, and Russia, held a large collection of Yiddish, Russian, and Hebrew books. Several of the branch buildings also became daily sanctuaries for children from immigrant families whose parents worked long hours.

To better serve their constituents, Countryman and her staff continued to analyze the demographic and cultural composition of the city's neighborhoods. Beginning in 1913, for example, the staff completed a "Community Survey" for each neighborhood served by a branch library (Peterson 1996:9-10). The Community Survey report for the Sumner Branch, dated 1916, summarizes the ethnicity of residents (e.g., 1,300 of the 2,250 families in the neighborhood are Jewish of Eastern European descent), the ethnicity of library patrons, the neighborhood wage earners' occupations, the neighborhood residents' educational level, and social support facilities available nearby. The report for Sumner, for example, characterizes the neighborhood families:

United States Department of the Interior
National Park Service

National Register of Historic Places
Continuation Sheet

Walker Branch Library
Minneapolis, Hennepin County, Minnesota

Section Number: 8 Page: 15

most of whom are poor people [where] the parents can neither speak nor write English. It becomes clear that the children, the first generation in their adopted country, start under an immense handicap of having to meet the ups and downs . . . of city life without any advice or aid from their parents. Regrettable as it is, there is no settlement house near at hand to help matters. . . . Much commendable work is being done by various welfare clubs but even they can cover but a limited field. . . . Few parents know where their children are from close of the schoolday till dark. The fathers of many of them do not get home from work until eight or nine o'clock in the evening ("Community Survey" 1916).

The Minneapolis Public Library's next three branch library buildings were constructed between the early 1920s and the early 1930s. The first to be built was the East Lake Branch building, which opened in February of 1924 for a newly-established branch. The East Lake building differed stylistically from the MPL's other branch buildings in that it was designed to resemble a light industrial or commercial structure. The building was designed to fit into its neighborhood -- a fast growing industrial and commercial area along Lake Street -- and to attract factory workers as well as residents of surrounding neighborhoods. The core of the East Lake Branch's original collection covered topics such as business, industry, and technology. (East Lake is extant and now houses a private business.) Two years later, in February of 1927, the Roosevelt Branch Library opened in south Minneapolis. The Roosevelt Branch had been operating since 1923 across the street in Roosevelt High School. The Roosevelt building was very similar to the East Lake Branch, but its design was softened somewhat with Tudor Revival detailing. The Roosevelt Branch continued to function as the school library as well as serving neighborhood residents. (Roosevelt is still a branch library today.) The Linden Hills Branch Library opened in 1931 in the Linden Hills neighborhood west of Lake Calhoun in southwestern Minneapolis. The Linden Hills building was constructed for a branch that had been established in 1911. (The Linden Hills Branch building is still a branch library today.)

During the Depression, tax support for the Minneapolis Public Library was reduced. The libraries were forced to cut back their open hours, even though widespread unemployment had swelled the demand for library services, library-associated social welfare programs, and recreational activities at the libraries. A survey taken on March 12, 1934, to help garner support for increased public funding recorded that 27,789 patrons visited the libraries on that day (Benidt 1984:118). Library funding was eventually restored to normal levels in 1936 after considerable public pressure. During the Depression at least three federal work relief programs -- the Civil Works Administration (CWA), the Emergency Relief Administration (ERA), and the Works Progress Administration (WPA) -- provided librarians, indexing staff, maintenance workers, and construction labor to the MPL.

United States Department of the Interior
National Park Service

National Register of Historic Places
Continuation Sheet

Walker Branch Library
Minneapolis, Hennepin County, Minnesota

Section Number: 8 Page: 16

The final MPL branch building to be built or acquired during Gratia Countryman's tenure as chief librarian was also the last branch building to be built or acquired before the 1960s. It was the Longfellow Branch, which opened in 1937 near Minnehaha Park in south Minneapolis. The library was established in a house that had been bequeathed to the city by its owner, Robert "Fish" Jones, and had then been acquired by the library board in 1936 for the branch. It is a large, woodframe, Neo-classical Revival style building that was built in 1906. The Longfellow Branch Library was opened to the public in 1937 shortly after Countryman retired. (The building still stands, although it is no longer a library. It is located within the Minnehaha Historic District, which was listed on the National Register on Nov. 25, 1969. In 1994, the house was moved to a new site in the park and rehabilitated.) In 1968 the Longfellow Branch was moved into new quarters, called the Nokomis Community Library, which had just been completed at Thirty-fourth Avenue and Fifty-first Street South. While Longfellow was the last of the early branches, Nokomis was the first of a new series of branch buildings that were built beginning in the late 1960s, launching the modern period in MPL branch library construction.

WALKER BRANCH LIBRARY

The Walker Branch (also sometimes referred to as the West Branch) was the fourth Minneapolis Public Library branch building to be constructed. It was completed in 1911 on land donated to the city. Tax revenues financed the building, which cost approximately \$45,000 to construct. The library was built by J. and W. A. Elliott, a prominent Minneapolis contractor that also built the MPL's Franklin Branch (completed in 1914). The Walker Branch building was constructed for a newly-established branch library (rather than for a branch that had been operating in previous quarters).

The Walker library site was donated by local philanthropist T. B. Walker. Thomas Barlow Walker (1840-1928) had been born and educated in Ohio and moved to Minneapolis in 1863 at the age of 23. He made a fortune in the northern Minnesota lumber industry and in real estate investments in the Minneapolis area. Walker was a leader in local cultural circles. He helped found numerous organizations such as the Minneapolis Public Library and the Minneapolis Society of Fine Arts. He served as president of the library's board of directors for more than 30 years from 1885 until his death in 1928. He contributed to the construction of the central library building (built in 1886-1889), loaned money for Central's 1906 enlargement, and loaned money to the library board in 1914 to acquire the site of the Thirty-sixth Street Branch (later called the Hosmer Branch). In the late 1920s T. B. Walker funded the establishment and construction of the Walker Art Center. The Walker Art Center opened in 1927 with Walker's private art collection as the basis of its holdings.

United States Department of the Interior
National Park Service

National Register of Historic Places
Continuation Sheet

Walker Branch Library
Minneapolis, Hennepin County, Minnesota

Section Number: 8 Page: 17

The site of the Walker Branch Library was located at a "commanding position at the head of the Mall boulevard" (which extended west from the library) (*Annual Report* 1918:81). The site was strategically located near an important commercial intersection at Hennepin Avenue and Lake Street. Streetcars ran on Hennepin Avenue, Lake Street, and nearby streets. West [Side] High School was located one block northwest of the library and three other schools were located within "'borrowers' distance" (*Annual Report* 1918:81). Gratia Countryman wrote in the Minneapolis Public Library's 1909 annual report that, "No better site for a large branch library could have been chosen. . . . The site is on the chief thoroughfare to Lake Minnetonka and the Park Lakes where every tourist and sightseer must pass it" (quoted in Freestone 1977:259).

The Walker Branch was designed in the Beaux Arts style, an design movement that was flourishing in the Midwest during the first decade of the 20th century and which had been popular for civic buildings -- including public libraries -- across the U.S. since the 1890s. The library was designed by Minneapolis architect Jerome Paul Jackson, who practiced alone in Minneapolis from 1908-1912, and then in partnership with Jacob Stone, Jr., from 1913-1917. Jackson designed several public libraries including three Minneapolis branches -- the Walker Branch (1911), the Seven Corners Branch (1912, razed 1964), and the East Lake Branch (1924) - - as well as the Virginia Public Library (1912) in Virginia. (He may also have designed Minneapolis' Roosevelt Branch (1927) which is very similar to the East Lake Branch.) Jackson also designed the First Christian Church of Christ (1910), the James C. Hazlett House (1912) at 2322 Oliver Ave. S., the Howard O. Hunt House at 2318 1st Ave. S., and alterations to the Pillsbury Settlement House at 4th St. E. and 16th Ave. S., all in Minneapolis.

The Walker Branch opened in June of 1911 after Gratia Countryman first traveled to New York City to gather books for its collection. Walker's first librarian was Lucy Dinsmore, the former head librarian of the North Side Branch. Among the library's clientele were "well-to-do residents" living near Lake Calhoun and Lake of the Isles (*Annual Report* 1918:81). By 1918, the library had 11,300 volumes and a circulation of 80,000, about half of which was adult fiction. Walker's basement meeting rooms were host to many clubs and organizations, and the site of lectures and convocations. The library became a gathering place for children who visited Walker for storytelling and reading hours and who attended club meetings in the basement. In 1948, for example, a Teen-Age Book Club formed at Walker. Its members wrote book reviews, compiled reading lists for children and teenagers, and presented puppet shows to smaller children.

By the 1970s the Walker Branch Library had outgrown its building and the Minneapolis Public Library formulated plans to construct a new facility across the street at 2880 Hennepin Avenue.

United States Department of the Interior
National Park Service

National Register of Historic Places

Continuation Sheet

Walker Branch Library
Minneapolis, Hennepin County, Minnesota

Section Number: 8 Page: 18

The new Walker Community Library opened in February of 1981. In late 1980 the original Walker Branch Library building was sold to a private owner. It now houses a social-service clothing store operated by a civic organization, the Junior League of Minneapolis.

SUMMARY

In summary, the Walker Branch of the Minneapolis Public Library is eligible for the National Register for its associations with the early history of the Minneapolis Public Library and the MPL's highly successful library outreach programs, and for its associations with MPL head librarian Gratia Alta Countryman.

United States Department of the Interior
National Park Service

National Register of Historic Places
Continuation Sheet

Walker Branch Library
Minneapolis, Hennepin County, Minnesota

Section Number: 9 Page: 1

9. MAJOR BIBLIOGRAPHICAL REFERENCES

Annual Report of the Minneapolis Public Library. 1918.

Baldwin, Clara F. "The Public Library Movement in Minnesota, 1900-1936." *Minnesota Libraries*, vol. 14 (Dec. 1945).

Benidt, Bruce Weir. *The Library Book: Centennial History of the Minneapolis Public Library.* Minneapolis: Minneapolis Public Library and Information Center, 1984.

Bobinski, George S. *Carnegie Libraries: Their History and Impact on American Public Library Development.* Chicago: American Library Assoc., 1969.

Borchert, John R., David A. Lanegran, David Gebhard, and Judith A. Martin. *Legacy of Minneapolis: Preservation Amid Change.* Minneapolis: Voyageur Press, 1984.

Carlstedt, Ellworth. "The Public Library Movement in Minnesota, 1849-1900." *Minnesota Libraries*, vol. 14 (Sept. 1945).

Foster, Mary Dillon, comp. *Who's Who Among Minnesota Women.* N.p.: privately pub., 1924.

Freestone, Robert Gordon. *Spatial Evolution of the Minneapolis Public Library System, 1885-1977.* Master's thesis, University of Minnesota, Aug. 1977.

Garrison, Dee. *Apostles of Culture. The Public Librarian and American Society, 1876-1920.* New York: Free Press, 1979.

Hanvik, Bill. "Casual Restaurant Gives Flair to Former Library." *Uptown Extra*, Jan. 17, 1985.

Lewis, Holly. "Walker Echoes Fade But Memories Keep Whispering." *Hill and Lake Press*, Feb. 7, 1981.

Lincoln, Sr. Mary Edmund, C. S. J. "Cultural Significance of the Minneapolis Public Library in its Origins and Development: A Study in the Relations of the Public Library and American Society." Ph.D. diss., University of Minnesota, 1958.

United States Department of the Interior
National Park Service

National Register of Historic Places
Continuation Sheet

Walker Branch Library
Minneapolis, Hennepin County, Minnesota

Section Number: 9 Page: 2

"New Branch Library Being Constructed." *Minneapolis Tribune*, Dec. 30, 1910.

Ostendorf, Paul John. "The History of the Public Library Movement in Minnesota from 1849 to 1916." Ph.D. diss., University of Minnesota, March 1984.

Pejsa, Jane. *Gratia Countryman. Her Life, Her Loves, and Her Library*. Minneapolis: Nodin Press, 1995.

Peterson, Garneth O. "The Development of the Public Library System in Minneapolis, 1859-1945." *Hennepin County History*, vol. 56, no. 2 (Spring 1997).

Peterson, Garneth O. "Public Libraries in Minneapolis, 1859-1985." Historic context narrative, *Minneapolis Preservation Plan*, City of Minneapolis (1990). 1996.

Pigno, Antonia Q., and Leslie A. Manning. "The Public Library in the American West." *Journal of the West*, July 1991.

Rohde, Nancy Freeman. "Gratia Alta Countryman: Librarian and Reformer." In *Women of Minnesota*. Eds. Barbara Stuhler and Gretchen Kreuter. St. Paul: Minnesota Historical Society Press, 1977; rev. ed. 1998.

Sassaman, Judith A. "The History and Development of the Carnegie Branch Library Buildings in Minneapolis." Master's thesis, University of Minnesota, 1979.

Van Slyck, Abigail. *Free to All: Carnegie Libraries and American Culture, 1890-1920*. Chicago: University of Chicago Press, 1995.

Walker Branch Library
Name of Property

Hennepin County MN
County and State

10. Geographical Data

Acreage of Property Less than one acre

UTM References Minneapolis South, Minn., 1967, revised 1993
(Place additional UTM references on a continuation sheet.)

1	15	476510	4977210	3			
	Zone	Easting	Northing		Zone	Easting	Northing
2				4			
					See continuation sheet		

Verbal Boundary Description

(Describe the boundaries of the property on a continuation sheet.)

Boundary Justification

(Explain why the boundaries were selected on a continuation sheet.)

11. Form Prepared By

name/title Susan Granger and Kay Grossman

organization Gemini Research date Dec. 31, 1998

street & number 15 East 9th St. telephone 320-589-3846

city or town Morris state MN zip code 56267

Additional Documentation

Submit the following items with the completed form:

Continuation Sheets

Maps

A **USGS map** (7.5 or 15 minute series) indicating the property's location.

A **Sketch map** for historic districts and properties having large acreage or numerous resources.

Photographs

Representative **black and white photographs** of the property.

Additional Items

(Check with the SHPO or FPO for any additional items)

Property Owner

(Complete this item at the request of SHPO or FPO.)

name _____

street & number _____ telephone _____

city or town _____ state _____ zip code _____

Paperwork Reduction Act Statement: This information is being collected for applications to the National Register of Historic Places to nominate properties for listing or determine eligibility for listing, to list properties, and to amend existing listings. Response to this request is required to obtain a benefit in accordance with the National Historic Preservation Act, as amended (16 U.S.C. 470 *et seq.*).

Estimated Burden Statement: Public reporting burden for this form is estimated to average 18.1 hours per response including time for reviewing instructions, gathering and maintaining data, and completing and reviewing the form. Direct comments regarding this burden estimate or any aspect of this form to the Chief, Administrative Services Division, National Park Service, P.O. Box 37127, Washington, DC 20013-7127; and the Office of Management and Budget, Paperwork Reductions Projects (1024-0018), Washington DC 20503.

United States Department of the Interior
National Park Service

National Register of Historic Places
Continuation Sheet

Walker Branch Library
Minneapolis, Hennepin County, Minnesota

Section Number: 10 Page: 1

10. GEOGRAPHICAL DATA

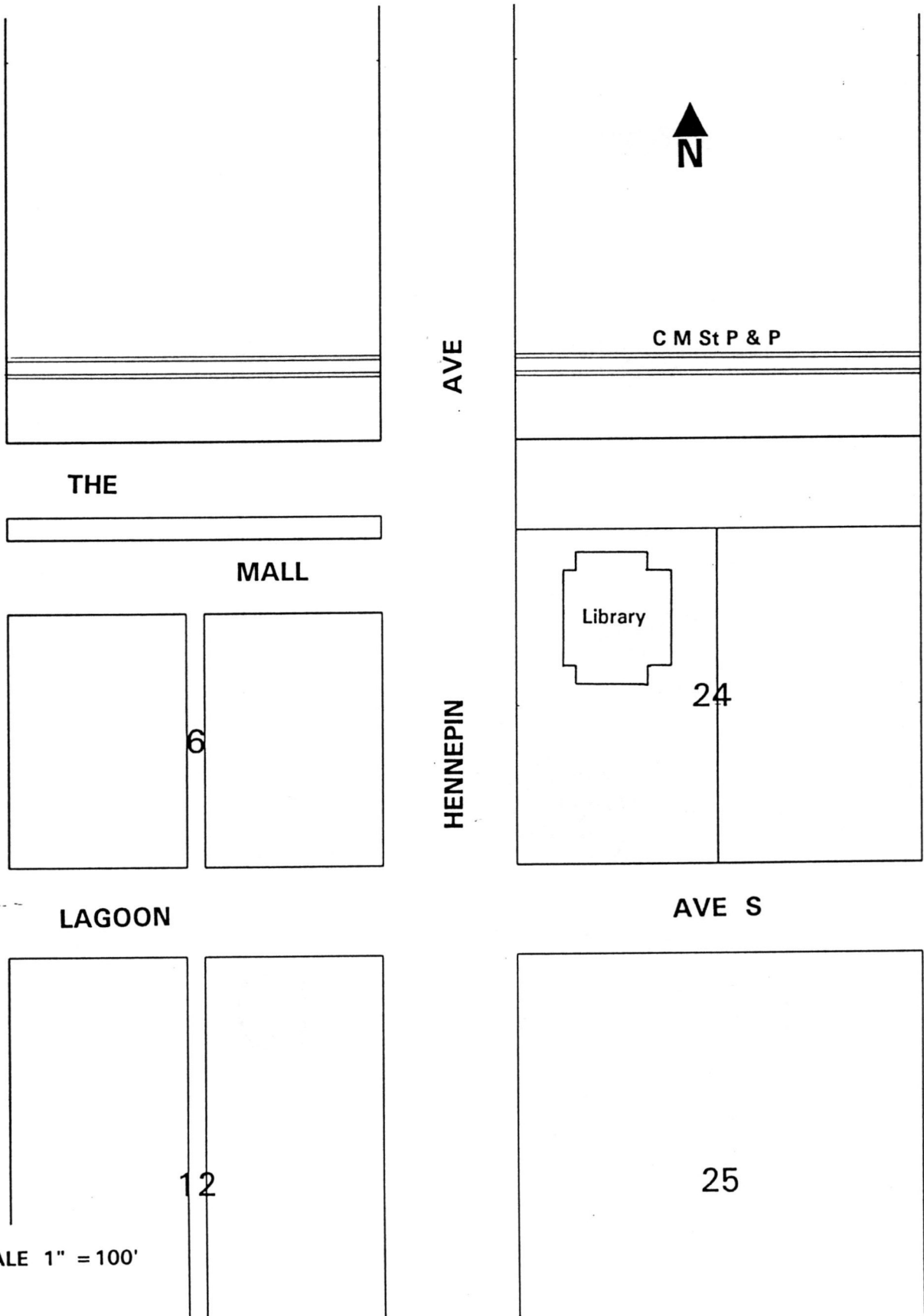
Verbal Boundary Description:

Lots 11 and 12 and the North 28 feet of Lot 10, including adjoining half of vacated alley, and including that part of adjacent vacated 29th Street West lying west of the northerly extension of center line of said vacated alley except street, Block 24, Windom's Addition to Minneapolis.

Boundary Justification:

The nominated property is comprised of the parcel of land historically associated with the Walker Branch of the Minneapolis Public Library.

Walker Branch Library
Minneapolis, Hennepin County, Minnesota



APPROX SCALE 1" = 100'

UNITED STATES DEPARTMENT OF THE INTERIOR
NATIONAL PARK SERVICE

NATIONAL REGISTER OF HISTORIC PLACES
EVALUATION/RETURN SHEET

REQUESTED ACTION: NOMINATION

PROPERTY Walker Branch Library
NAME:

MULTIPLE
NAME:

STATE & COUNTY: MINNESOTA, Hennepin

DATE RECEIVED: 4/28/00 DATE OF PENDING LIST: 5/10/00
DATE OF 16TH DAY: 5/26/00 DATE OF 45TH DAY: 6/12/00
DATE OF WEEKLY LIST:

REFERENCE NUMBER: 00000544

REASONS FOR REVIEW:

APPEAL: N DATA PROBLEM: N LANDSCAPE: N LESS THAN 50 YEARS: N
OTHER: N PDIL: N PERIOD: N PROGRAM UNAPPROVED: N
REQUEST: N SAMPLE: N SLR DRAFT: N NATIONAL: N

COMMENT WAIVER: N

ACCEPT RETURN REJECT 5/26/00 DATE

ABSTRACT/SUMMARY COMMENTS:

Entered in the
National Register

RECOM./CRITERIA _____

REVIEWER _____ DISCIPLINE _____

TELEPHONE _____ DATE _____

DOCUMENTATION see attached comments Y/N see attached SLR Y/N



Walker Branch Library
2901 Hennepin Ave. S, Minneapolis
Hennepin County, MN

013456-10

Walker Branch Library
2901 Hennepin Ave. So., Mpls.
Hennepin Co., Mn

013456-10

Photographer: Gemini Research
October 1998

Mn Historical Society, 345 Kellogg Blvd. W., St. Paul, Mn 55102-1906

Looking SE

WALKER

From the collections of the

MINNESOTA HISTORICAL SOCIETY

Do not reproduce without written permission.

NOTICE

This material may be protected by Copyright law
(Title 17 of United States Code)



Walker Branch Library
2901 Hennepin Ave. S, Minneapolis
Hennepin County, MN
013456-13

Walker Branch Library
2901 Hennepin Ave. So., mpls.

013456-13

Hennepin Co., mn

Photographer: Gemini Research

October 1998

Mn Historical Society, 345 Kellogg Blvd. w., St. Paul, mn 55102-1906

LOOKing E

WALKER

From the collections of the

MINNESOTA HISTORICAL SOCIETY

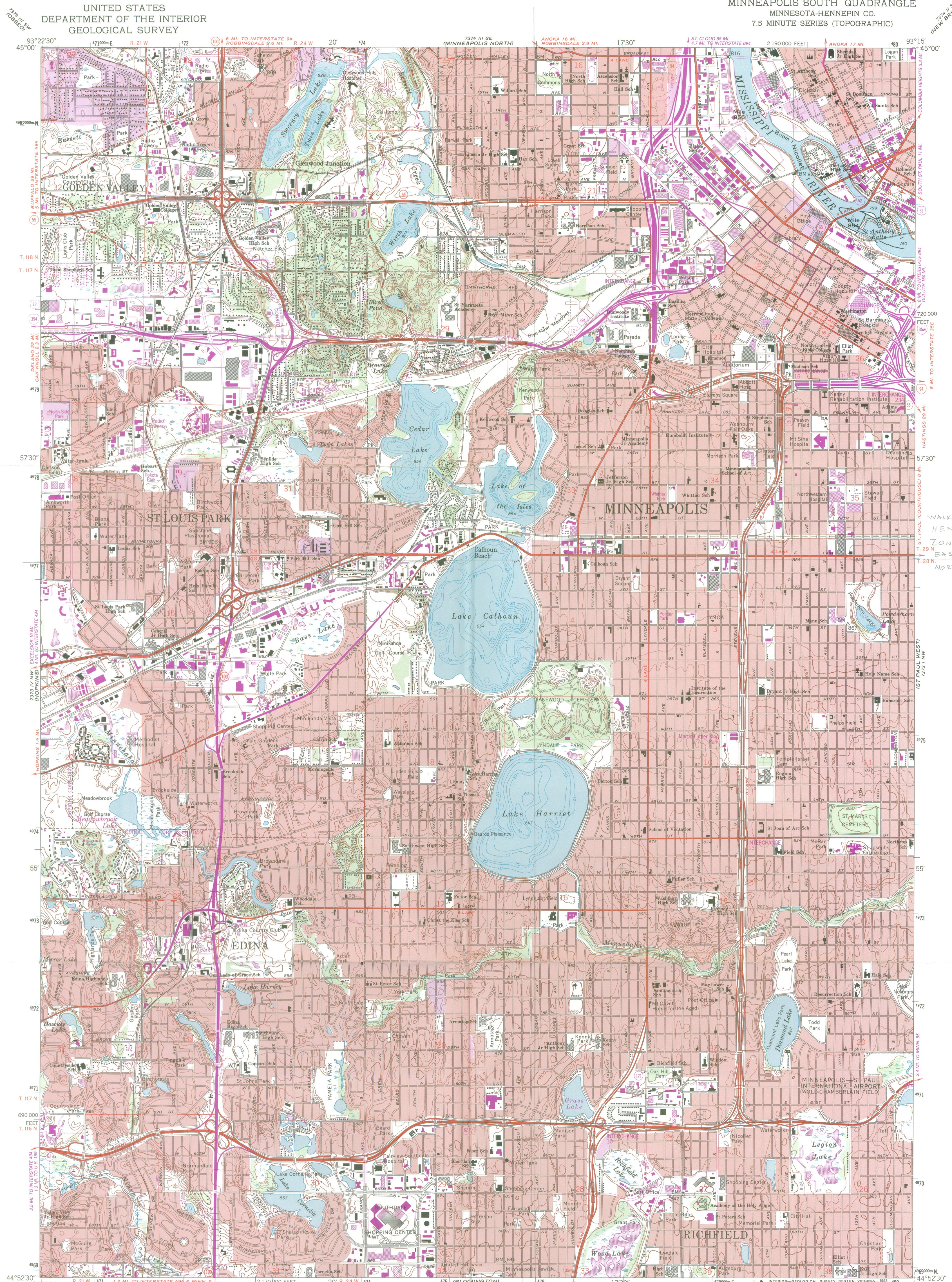
Do not reproduce without written permission.

NOTICE

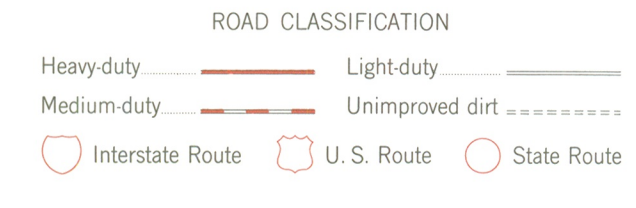
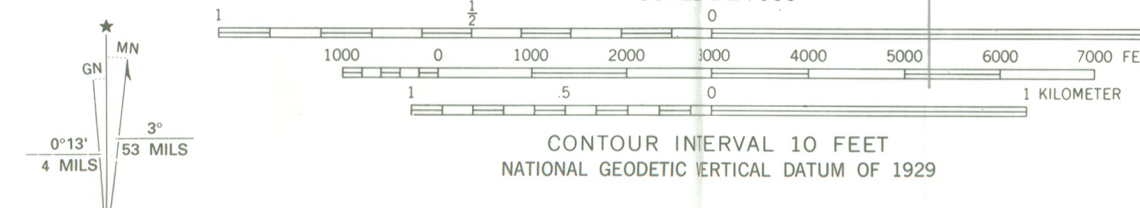
This material may be protected by Copyright law
(Title 17 of United States Code)

UNITED STATES
DEPARTMENT OF THE INTERIOR
GEOLOGICAL SURVEY

MINNEAPOLIS SOUTH QUADRANGLE
MINNESOTA-HENNEPIN CO.
7.5 MINUTE SERIES (TOPOGRAPHIC)



Produced by the United States Geological Survey
Control by USGS, NOS/NOAA and USCE
Topography by photogrammetric methods from aerial photographs taken 1947. Field checked 1952. Revised from aerial photographs taken 1966. Field checked 1967. Map edited 1967
Hydrography compiled from information furnished by Minnesota Department of Natural Resources
Projection and 10,000-foot grid ticks: Minnesota coordinate system, south zone (Lambert conformal conic)
1000-meter Universal Transverse Mercator grid ticks, zone 15, shown in blue 1927 North American Datum (NAD 27)
North American Datum of 1983 (NAD 83) is shown by dashed corner ticks
The values of the shift between NAD 27 and NAD 83 for 7.5-minute intersections are given in USGS Bulletin 1875
Red tint indicates areas in which only landmark buildings are shown



MINNEAPOLIS SOUTH, MINN.
44093-H3-TF-024

THIS MAP COMPLIES WITH NATIONAL MAP ACCURACY STANDARDS
FOR SALE BY U.S. GEOLOGICAL SURVEY
DENVER, COLORADO 80225, OR RESTON, VIRGINIA 22092
A FOLDER DESCRIBING TOPOGRAPHIC MAPS AND SYMBOLS IS AVAILABLE ON REQUEST

Revisions shown in purple and woodland compiled in cooperation with State of Minnesota agencies from aerial photographs taken 1991 and other sources. This information not field checked. Map edited 1993

1967
REVISED 1993
DMA 7373 IV NE-SERIES V872

WALKER BRANCH LIBRARY
HENNEPIN CO., MN
ZONE 15
EASTING: 476510
NORTHING: 4977210

Walker Branch Library

Office of the Mayor
350 South 5th Street - Room 331
Minneapolis MN 55415-1393



Sharon Sayles Belton
Mayor

Office (612) 673-2100
Fax 673-2305
TTY 673-3187

February 28, 2000

Britta Bloomberg
Deputy State Historic Preservation Officer
345 Kellogg Blvd. W.
St. Paul, MN 55102

Dear Ms. Bloomberg,

RE: Certified Local Government Comment on the nomination of:
East Lake Branch Library, 2916 E. Lake Street
Franklin Branch Library, 1314 E. Franklin Avenue
Linden Hills Branch Library, 2900 W. 43rd Street
Roosevelt Branch Library, 611 Emerson Avenue N.
Hosmer Branch Library, 347 E. 36th Street
Walker Branch Library, 2901 Hennepin Avenue S.
to the National Register of Historic Places.

Thank you for the opportunity to comment on the National Register nomination of the Minneapolis branch libraries. As Mayor of Minneapolis, I supported the local designation of these buildings and believe they are community cornerstones as well as national landmarks. I concur with the findings of the Minneapolis Heritage Preservation Commission and support the nomination of the properties.

Sincerely,

A handwritten signature in black ink that reads "Sharon Sayles Belton".

Sharon Sayles Belton
Mayor

HERITAGE PRESERVATION COMMISSION
350 South Fifth Street - Room 210
Minneapolis MN 55415-1385

Office (612) 673-2422
TDY (612) 673-2157



February 28, 2000

Britta Bloomberg
Deputy State Historic Preservation Officer
345 Kellogg Blvd. W.
St. Paul, MN 55102

Dear Ms. Bloomberg,

RE: Certified Local Government Comment on the nomination of:
East Lake Branch Library, 2916 E. Lake Street
Franklin Branch Library, 1314 E. Franklin Avenue
Linden Hills Branch Library, 2900 W. 43rd Street
Roosevelt Branch Library, 611 Emerson Avenue N.
Hosmer Branch Library, 347 E. 36th Street
Walker Branch Library, 2901 Hennepin Avenue S.
to the National Register of Historic Places.

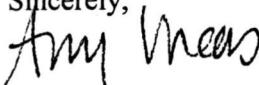
Minneapolis Heritage Preservation Commissioner, David Stevens, meets the Federal Standards for History and has reviewed the National Register nominations of the above properties. His comments are as follows:

"It is my opinion that these properties meet both criteria (A & B) for listing on the National Register of Historic Places. I am especially enthusiastic about their designation because of the importance of Gratia Countryman, a nationally influential civic leader whose career was representative of crucial social trends like progressive reform, settlement work, middle class female efforts for social welfare reform and immigration.

"Perhaps most extraordinary about Countryman was that her outreach to immigrants went beyond simple assimilation. Like other civic leaders across the nation, Countryman saw libraries and education as tools of cultural uplift. Unlike most, she was willing to meet the immigrant halfway, offering foreign language materials targeted to the appropriate neighborhood.

"The fact that many of these branch libraries continue to serve the neighborhoods and a new wave of immigrants underscores the importance of the buildings and of their founder."

If you have any questions regarding Mr. Stevens comments, please call HPC staff, Amy Lucas at (612) 673-2422.

Sincerely,

Amy Lucas
Preservation Planner