

398

United States Department of the Interior
National Park Service

APR 10 1989

National Register of Historic Places
Registration Form

NATIONAL
REGISTER

This form is for use in nominating or requesting determinations of eligibility for individual properties or districts. See instructions in *Guidelines for Completing National Register Forms* (National Register Bulletin 16). Complete each item by marking "x" in the appropriate box or by entering the requested information. If an item does not apply to the property being documented, enter "N/A" for "not applicable." For functions, styles, materials, and areas of significance, enter only the categories and subcategories listed in the instructions. For additional space use continuation sheets (Form 10-900a). Type all entries.

1. Name of Property

historic name Front Street Historic District
other names/site number n/a

2. Location

street & number Front Street south of West Court Street n/a not for publication
city, town Prestonsburg n/a vicinity
state Kentucky code KY county Floyd code 071 zip code 41653

3. Classification

Ownership of Property	Category of Property	Number of Resources within Property	
<input checked="" type="checkbox"/> private	<input type="checkbox"/> building(s)	Contributing	Noncontributing
<input type="checkbox"/> public-local	<input checked="" type="checkbox"/> district	<u>6</u>	<u>0</u> buildings
<input type="checkbox"/> public-State	<input type="checkbox"/> site	_____	_____ sites
<input type="checkbox"/> public-Federal	<input type="checkbox"/> structure	_____	_____ structures
	<input type="checkbox"/> object	_____	_____ objects
		<u>6</u>	<u>0</u> Total

Name of related multiple property listing: Historic Resources of Prestonsburg
Number of contributing resources previously listed in the National Register 0

4. State/Federal Agency Certification

As the designated authority under the National Historic Preservation Act of 1966, as amended, I hereby certify that this nomination request for determination of eligibility meets the documentation standards for registering properties in the National Register of Historic Places and meets the procedural and professional requirements set forth in 36 CFR Part 60. In my opinion, the property meets does not meet the National Register criteria. See continuation sheet.
David L. Morgan
Signature of certifying official David L. Morgan Date 3-30-89
State Historic Preservation Officer, Commonwealth of Kentucky
State or Federal agency and bureau _____

In my opinion, the property meets does not meet the National Register criteria. See continuation sheet.
Signature of commenting or other official _____ Date _____
State or Federal agency and bureau _____

5. National Park Service Certification

I, hereby, certify that this property is:
 entered in the National Register. Patrick Andrews 5/18/89
 See continuation sheet.
 determined eligible for the National Register. See continuation sheet.
 determined not eligible for the National Register.
 removed from the National Register.
 other, (explain:) _____
Signature of the Keeper Date of Action

6. Function or Use

Historic Functions (enter categories from instructions)

Commerce/Trade: Department Store,
Professional Office

Transportation: Road-related

Domestic: Hotel

Social: Meeting Hall

Current Functions (enter categories from instructions)

Commerce/Trade: Specialty Store,
Restaurant

Social: Meeting Hall

Health Care: Clinic

Vacant

7. Description

Architectural Classification

(enter categories from instructions)

Commercial Style

Materials (enter categories from instructions)

foundation Concrete

walls Brick

roof Other

other Stone, Concrete

Describe present and historic physical appearance.

**United States Department of the Interior
National Park Service****National Register of Historic Places
Continuation Sheet**

Front Street Historic District, Historic Resources of Prestonsburg

Section number 7 Page 1

The Front Street Historic District is located in central Prestonsburg, Kentucky between West Court and Ford Streets. Front Street, which runs north and south parallel to the Levisa Fork, and Court Street, which runs east and west, form the two axes of the city's downtown business district. (See map.) The district includes five adjacent buildings on the west side of Front Street, and a sixth opposite. The boundaries of the district are clearly defined by municipal parking lots, walkways, and buildings of different age and lesser integrity. A residential neighborhood, developed continuously from the early 1800's through the present day, adjoins the district on the north and south.

The character of Prestonsburg's downtown area in general, and of the Front Street Historic District in particular, is typical of the business districts of eastern Kentucky towns. In many of these communities narrow streets and rows of closely spaced multi-story buildings that are vertical in emphasis create an ambience peculiar to their time and place. The Front Street Historic District readily conveys the impression of an early twentieth century business district in a mountain community. It is compact and cohesive and exhibits a great deal of architectural consistency. Its six buildings, built over the course of three decades, are unified by their massing, scale, setbacks, materials, and ornamentation. The district's streetscape is uninterrupted by modern intrusions or vacant lots and possesses a sense of the past absent in other parts of downtown Prestonsburg.

The Front Street Historic District is typical of downtown Prestonsburg in its mixture of retail, office, fraternal, and service-oriented uses. However, its visual character is different from that of surrounding blocks. The east side of Front Street north of West Court Street includes a row of commercial buildings of the early-to-mid-twentieth century, all of which have been considerably altered: the rest of the block is residential in character. Residential uses also predominate on Front Street south of the historic district boundary. The two-block section of West Court Street bounded by Front Street and Lake Drive exhibits a varied group of commercial buildings dating from the 1900's through the 1970's. These two blocks include several commercial buildings dating from 1909 through the late 1930's, most of which feature altered storefronts and intact upper stories. But these historically significant buildings are adjoined by many others that differ considerably in scale, materials or proportions. These include 1940's-vintage commercial rows, two large one-story mercantile buildings built respectively during the 1960's and 1970's, and two mid-twentieth-century retail buildings that have been severely altered. The south side of East Court Street between Lake Drive and Central Avenue is taken up by a large parking lot. The north side of East Court Street between Lake Drive and College Lane is occupied by a one-story post-World War II office building, a retail building of undetermined vintage, a 1920's mercantile row, and a parking lot. Commercial uses predominate along Lake Drive but are housed in freestanding individual buildings, most of which are of recent vintage, adjoined by parking lots.

**United States Department of the Interior
National Park Service****National Register of Historic Places
Continuation Sheet**

Front Street Historic District, Historic Resources of Prestonsburg

Section number 7 Page 2

All six buildings of the Front Street Historic District contribute to its character. Although four of these buildings--the Hughes, Combs, Elizabeth Hotel and Auxier Hotel Buildings--have altered storefronts, they are still contributing elements because their upper stories remain unchanged. The remaining two, the Odd Fellows and Richmond Buildings, remain intact at all levels, a condition that is becomingly increasingly rare in Prestonsburg and elsewhere.

1. THE HUGHES BUILDING (C)

The Hughes Building was built in 1927. It is the smallest building in the district and stands two stories high with five closely-spaced window bays. It is clad with light-brown brick. A tablet inscribed with "Hughes 1927" is visible above the second story. Its storefront has been drastically altered by the addition of a false mansard roof and wood paneling.

The Hughes Building is the namesake of druggist H. E. (Henry) Hughes who constructed it as a speculative venture; his pharmacy business was housed elsewhere. The first floor is occupied by a restaurant and game arcade, with office space on the second floor.

2. THE COMBS BUILDING (C)

The Combs Building, constructed c. 1920's, stands two stories high and is faced with dark-brown brick. Its facade displays paired windows with continuous lintels and sills. A blank stone tablet is set below the cornice line. The building's storefront has been altered by the addition of an oversized signboard with plastic lettering.

The Combs Building was constructed for lawyer B. F. Combs, who also served as county attorney, to house his family's law firm. It was purchased in the 1960's by the Hobbs family to house part of their department store, which closed in 1987. Since then, the building has been vacant.

3. THE ELIZABETH HOTEL BUILDING (C)

One of the largest buildings in downtown Prestonsburg, the Elizabeth Hotel Building stands three stories tall and six bays wide and is faced with yellow pressed brick. It is distinguished for its ornamental masonry work including corbel tables at the cornice line and inset panels above windows. Windows are double-hung sash with stone lintels and are set in shallow spandrels surmounted by corbeled courses. The building's storefront has been partly obscured by the addition of metal panels and plastic signs, alterations that appear to have taken place in the 1960's.

The building was built for the Stephens family c. 1915 to house their hostelry, the

**United States Department of the Interior
National Park Service****National Register of Historic Places
Continuation Sheet**

Front Street Historic District, Historic Resources of Prestonsburg

Section number 7 Page 3

Elizabeth Hotel. The hotel, one of four inns operating in the city during the early twentieth century, remained in operation for many years. Its first floor at one time housed the first bus depot in the city. The building was later sold to the Hobbs family to house part of their department store. Since the Hobbs Store closed, the building has been vacant.

4. THE ODD FELLOWS BUILDING (C)

The Odd Fellows Building is the largest building in downtown Prestonsburg. Its massive appearance derives from its three-story height and large expanses of wall surface with relatively small windows. The building is faced with dark-brown wire-cut brick. The flatness and severity of its facade are relieved by a series of diamond-shaped stone plaques and a tablet bearing the initials "F.L.T" and a series of interlocking circles, symbols of the Odd Fellows. Windows are metal casements with horizontal muntins. The building's storefront remains in nearly original condition and features frosted glass transoms, large plate glass windows, and a brick-clad bulkhead.

This building was erected in 1938 for Prestonsburg's chapter of the Fraternal Order of Odd Fellows and is still owned and used by them. Upper floors house the chapter's meeting rooms, and the first floor is occupied by a stationery and office supplies store.

5. THE AUXIER HOTEL BUILDING (C)

The Auxier Hotel Building's functional design consists of a main block three stories high and three bays wide, with large casement windows bearing three-part rectangular transoms. It is faced with dark-brown brick and displays a tablet that reads "Auxier 1930." A flat metal awning supported by an iron post has been added, along with a non-contributing one-story south addition (date unknown). The main building's original storefront windows have been filled in with glass block.

The Auxier Hotel Building was constructed in 1930 for the Auxier family, descendants of one of the area's pioneer clans, as a new home for their namesake hotel. The family later sold the building to George Archer to be used for the city's first hospital. When a new regional medical center was constructed, the building was sold to Mountain Comprehensive Care and is now used as a mental health clinic.

6. THE RICHMOND BUILDING (C).

Built in 1914 as the new home of I. Richmond Company Department Store, this building has survived virtually unaltered since its construction. Built of red pressed brick, it stands three stories high. Its upper stories exhibit grouped windows whose horizontal configuration recalls the window treatments of the Chicago School. Decorative elements

**United States Department of the Interior
National Park Service****National Register of Historic Places
Continuation Sheet**

Front Street Historic District, Historic Resources of Prestonsburg

Section number 7 Page 4

include rectangular brick panels set between the second and third stories, a projecting cornice, and an inset stone plaque bearing the legend "Richmond 1914." The building's storefront retains its original violet prism glass transoms, large plate glass windows, and bulkhead faced with glossy black tile. The names "Richmond" and "Hereford" are painted on brick above transom level, and a faded advertisement on the north wall proclaims "I. Richmond and Co. Department Store." Interior features include wood and glass counters and pressed-tin ceilings. Much original merchandise, including such archaic items as spats and high-button shoes, is stored on upper floors.

The I. Richmond Company, the city's first retail establishment, originated as a general store in 1869. Over the years the business evolved into a department store specializing in clothing, and obtained exclusive rights to many better-quality labels such as Stetson hats. Beginning in the 1940's one-third of the building was taken over by an electronics and sporting goods store run by Richmond son-in-law Thomas Hereford. Both the Richmond and Hereford concerns closed in the 1970's. The Hereford store opened briefly for the 1987 Christmas shopping season and has been closed since.

8. Statement of Significance

Certifying official has considered the significance of this property in relation to other properties:

nationally statewide locally

Applicable National Register Criteria A B C D

Criteria Considerations (Exceptions) A B C D E F G n/a

Areas of Significance (enter categories from instructions)

Other: Community Development

Architecture

Significant Person

n/a

Period of Significance

1914-1938

Cultural Affiliation

n/a

Architect/Builder

Unknown

Significant Dates

n/a

State significance of property, and justify criteria, criteria considerations, and areas and periods of significance noted above.

See continuation sheet

9. Major Bibliographical References

See Overview Form

- Previous documentation on file (NPS): n/a
- preliminary determination of individual listing (36 CFR 67) has been requested
 - previously listed in the National Register
 - previously determined eligible by the National Register
 - designated a National Historic Landmark
 - recorded by Historic American Buildings Survey # _____
 - recorded by Historic American Engineering Record # _____

See continuation sheet

Primary location of additional data:

- State historic preservation office
- Other State agency
- Federal agency
- Local government
- University
- Other

Specify repository:

Kentucky Heritage Council, Frankfort

10. Geographical Data

Acreage of property Approximately Three Acres

UTM References

A	<u>1</u> <u>7</u>	<u>3</u> <u>4</u> <u>3</u> <u>5</u> <u>0</u> <u>0</u>	<u>4</u> <u>1</u> <u>7</u> <u>0</u> <u>1</u> <u>8</u> <u>0</u>
	Zone	Easting	Northing
C	<u>1</u> <u>7</u>	<u>3</u> <u>4</u> <u>3</u> <u>3</u> <u>6</u> <u>0</u>	<u>4</u> <u>1</u> <u>7</u> <u>0</u> <u>0</u> <u>4</u> <u>0</u>

B	<u>1</u> <u>7</u>	<u>3</u> <u>4</u> <u>3</u> <u>5</u> <u>0</u> <u>0</u>	<u>4</u> <u>1</u> <u>7</u> <u>0</u> <u>1</u> <u>2</u> <u>0</u>
	Zone	Easting	Northing
D	<u>1</u> <u>7</u>	<u>3</u> <u>4</u> <u>3</u> <u>3</u> <u>4</u> <u>0</u>	<u>4</u> <u>1</u> <u>7</u> <u>0</u> <u>1</u> <u>0</u> <u>0</u>

See continuation sheet

Verbal Boundary Description

See continuation sheet

Boundary Justification

See continuation sheet

11. Form Prepared By

name/title Margaret Warminski, Historic Preservation Consultant to City of Prestonsburg
organization _____ date December, 1988
street & number 340 East Second Street telephone 606/581-2883
city or town Newport state Kentucky zip code 41071

**United States Department of the Interior
National Park Service**

**National Register of Historic Places
Continuation Sheet**

Front Street Historic District, Historic Resources of Prestonsburg

Section number 8 Page 1

The Front Street Historic District is locally significant under Criterion A and the theme of the community development of Prestonsburg for its association with the city's commercial life during its greatest era of growth and prosperity. Its mixture of business, professional, fraternal, and institutional uses is representative of that role. It is also significant as the home of the town's first retail establishment, two hotels, the office of a prominent attorney, and the city's first bus depot, as well as an Odd Fellows' lodge and the first hospital in Prestonsburg. The district is also locally significant under Criterion C and the theme of the architectural resources of Prestonsburg as a distinguishable entity of commercial vernacular architecture as well as the city's most intact and cohesive collection of early twentieth century commercial buildings. The district's period of significance begins in 1914, the construction date of its earliest building, and ends in 1938.

**United States Department of the Interior
National Park Service****National Register of Historic Places
Continuation Sheet**

Front Street Historic District, Historic Resources of Prestonsburg

Section number 10 Page 1

BOUNDARY DESCRIPTION

Beginning at a point in the west line of Front Street south of West Court Street, this point being the northeast corner of the property known as the Hughes Building; then proceeding in a southerly direction along the west line of Front Street 50 feet more or less to a point; then proceeding in an easterly direction across Front Street to a point opposite in its east line, this being the northwest corner of the property known as the Richmond Building; then continuing eastward along that property's north line to its northeast corner, a distance of 150 feet more or less; then proceeding in a southerly direction along the property's rear (east) line to its southeast corner, a distance of 75 feet more or less; then moving in a westerly direction along the property's south line to its southwest corner--a point in the east line of Front Street--a distance of 150 feet more or less; then continuing in a westerly direction across Front Street to a point opposite in its west line; then proceeding in a southerly direction along said west line to the southeast corner of a property known as the Auxier Hotel, a distance of 200 feet more or less; then moving in a westerly direction along the south line of said property to the low water mark of the Levisa Fork, a distance of 400 feet more or less; then proceeding in a northerly direction along the the east bank of said river to the northwest corner of a property known as the Hughes Building, a distance of 375 feet more or less; then proceeding in an easterly direction along the north line of said property a distance of 350 feet more or less to the west line of Front Street: the place of beginning.

BOUNDARY JUSTIFICATION

The Front Street Historic District includes six buildings on a single block related by age, type, physical proximity, historic function and current use. It includes five buildings on the west side of the block, the former Hughes, Combs, Elizabeth Hotel, and Auxier Hotel Buildings, and the Odd Fellows Building. Also included is the Richmond Building, located directly opposite on the east side of the block. Although the Richmond Building is not adjacent to the others, it is clearly related to them by function and architectural styling and is significant in the same historic context.

This boundary includes the legal parcels of all buildings in the district and excludes surrounding areas of differing function and lesser integrity. On the west side of the block the district's boundary was drawn to skirt a parking lot adjoining the Hughes Building on the north and another adjoining the Auxier Hotel Building on the south. On the east side of the street, it skirts a large c. 1960 retail building that addresses the southeast corner of West Court and Front Streets, and runs along a walkway adjoining the south elevation of the Richmond Building. Areas adjacent to the district are described in Section 7.

United States Department of the Interior
National Park Service

National Register of Historic Places
Continuation Sheet

Section number _____ Photos _____ Page _____

Front Street Historic District
Historic Resources of Prestonsburg MPS, Floyd Co., KY

Photo 1

Prestonsburg Multiple Properties Submission (same for all photos)

Front Street Historic District

South Front Street (same for photos 1 through 6)

Prestonsburg, Kentucky (same for all photos)

Margaret Warminski (same for all photos)

July 1988

Negative location: Kentucky Heritage Council, Frankfort, Kentucky (same for all photos)

Block view of Front Street Historic District, looking northwest from the east side of Front Street. West side of Front Street, with Auxier Hotel Building in foreground, is depicted.

Photo 2

Hughes Building

Front Street Historic District

July 1988

Facade view of Hughes Building, looking west from the east side of Front Street.

Photo 3

Combs Building

Front Street Historic District

July 1988

Facade view of Combs Building, looking northwest from the east side of Front Street.

Photo 4

Elizabeth Hotel Building

Front Street Historic District

July 1988

Facade view of Elizabeth Hotel Building, looking northwest from the east side of Front Street.

Photo 5

Odd Fellows Building

Front Street Historic District

February 1988

View of facade and part of south elevation of the Odd Fellows Building; Elizabeth Hotel Building at right side of photo. Looking northwest from the east side of Front Street.

Photo 6

Richmond Building

Front Street Historic District

February 1988

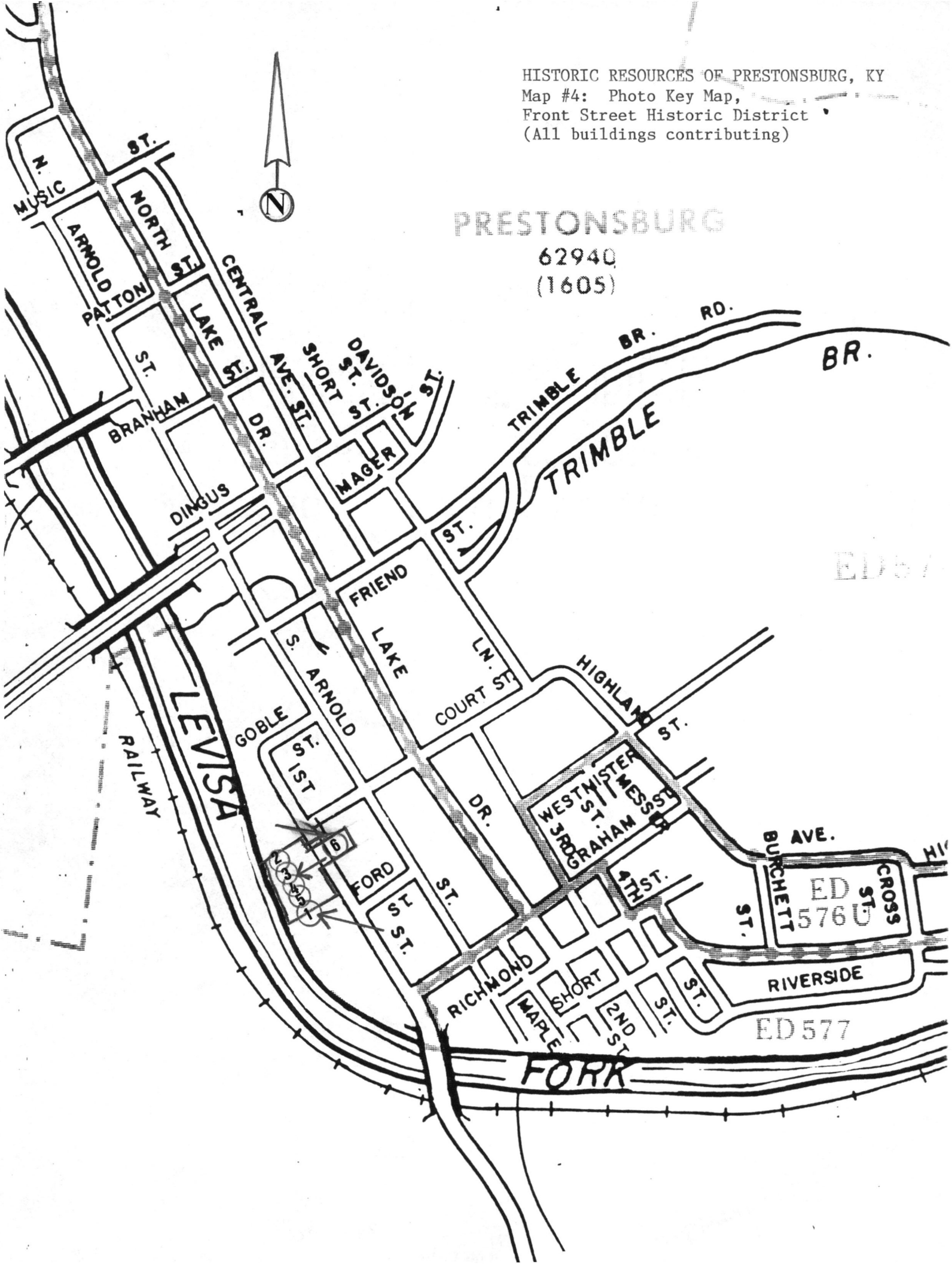
Facade view looking southeast from the west side of Front Street.

HISTORIC RESOURCES OF PRESTONSBURG, KY
Map #4: Photo Key Map,
Front Street Historic District
(All buildings contributing)



PRESTONSBURG

62940
(1605)



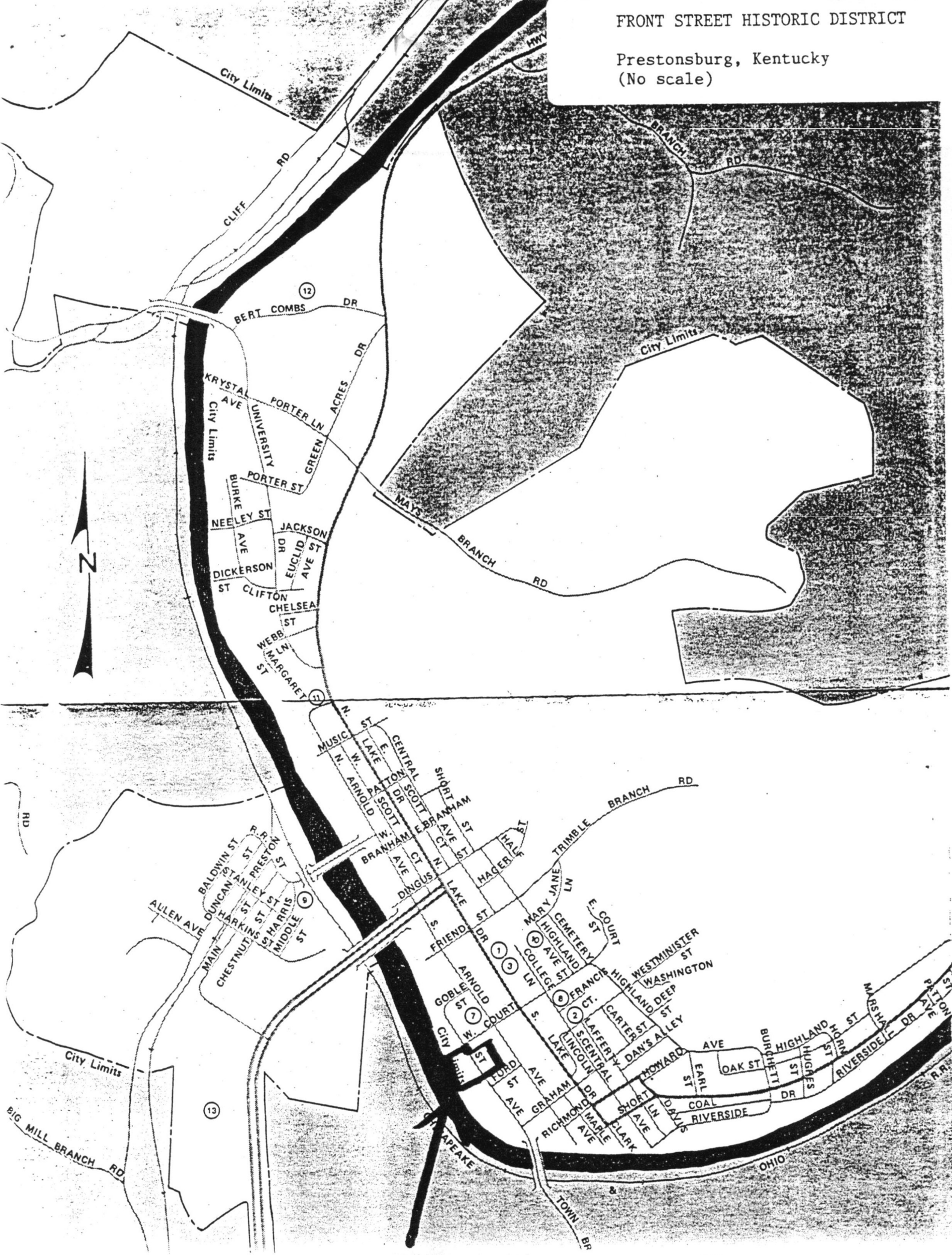
ED 577

BURCHETT ST.
ED 576 U
CROSS ST.

RIVERSIDE
ED 577

FRONT STREET HISTORIC DISTRICT

Prestonsburg, Kentucky
(No scale)



United States Department of the Interior
National Park Service

National Register of Historic Places
Continuation Sheet

Section number _____ Page _____

Prestonsburg MPS Floyd County, KENTUCKY

Date Listed

COVER

5/18/89

1. Callihan, G.D., House

5/18/89

2. Combs, B.F., House

5/18/89

SLR 3. Fitzpatrick--Harmon House **Substantive Review**

5/18/89

5 - SLR 4. Front Street Historic District **Substantive Review**

5/18/89

5. Harkins Law Office Building

5/18/89

6. Harkins, Joseph D., House

5/18/89

7. May--Fitzpatrick House

5/18/89

SLR 8. Methodist Episcopal Church, South **Substantive Review**

5/18/89

9. Town Branch Bridge

5/18/89

4/14/89 S 10. US Post Office--Prestonsburg **Substantive Review**

5/18/89

11. West Prestonsburg Bridge

5/18/89

12. May--Latta House

5/18/89

UNITED STATES DEPARTMENT OF THE INTERIOR
NATIONAL PARK SERVICE

NATIONAL REGISTER OF HISTORIC PLACES
EVALUATION/RETURN SHEET

REQUESTED ACTION: NOMINATION

PROPERTY Front Street Historic District
NAME:

MULTIPLE Prestonsburg MPS
NAME:

STATE & COUNTY: KENTUCKY, Floyd

DATE RECEIVED: 4/10/89 DATE OF PENDING LIST: 4/25/89
DATE OF 16TH DAY: 5/11/89 DATE OF 45TH DAY: 5/25/89
DATE OF WEEKLY LIST:

REFERENCE NUMBER: 89000398

NOMINATOR: STATE

REASONS FOR REVIEW:

APPEAL: N DATA PROBLEM: N LANDSCAPE: N LESS THAN 50 YEARS: N
OTHER: N PDIL: N PERIOD: N PROGRAM UNAPPROVED: N
REQUEST: N SAMPLE: Y SLR DRAFT: Y NATIONAL: N

COMMENT WAIVER: N

ACCEPT RETURN REJECT 5/18/89 DATE

ABSTRACT/SUMMARY COMMENTS:

*Small commercial district associated with
period of growth in the community*

RECOM./CRITERIA accept AEC
REVIEWER Patrick Andrews
DISCIPLINE Historian
DATE 5/18/89

DOCUMENTATION see attached comments Y/N see attached SLR Y/N

CLASSIFICATION

count resource type

STATE/FEDERAL AGENCY CERTIFICATION

FUNCTION

historic current

DESCRIPTION

architectural classification
 materials
 descriptive text

SIGNIFICANCE

Period Areas of Significance--Check and justify below

Specific dates Builder/Architect
Statement of Significance (in one paragraph)

summary paragraph
 completeness
 clarity
 applicable criteria
 justification of areas checked
 relating significance to the resource
 context
 relationship of integrity to significance
 justification of exception
 other

BIBLIOGRAPHY

GEOGRAPHICAL DATA

acreage verbal boundary description
 UTM's boundary justification

ACCOMPANYING DOCUMENTATION/PRESENTATION

sketch maps USGS maps photographs presentation

OTHER COMMENTS

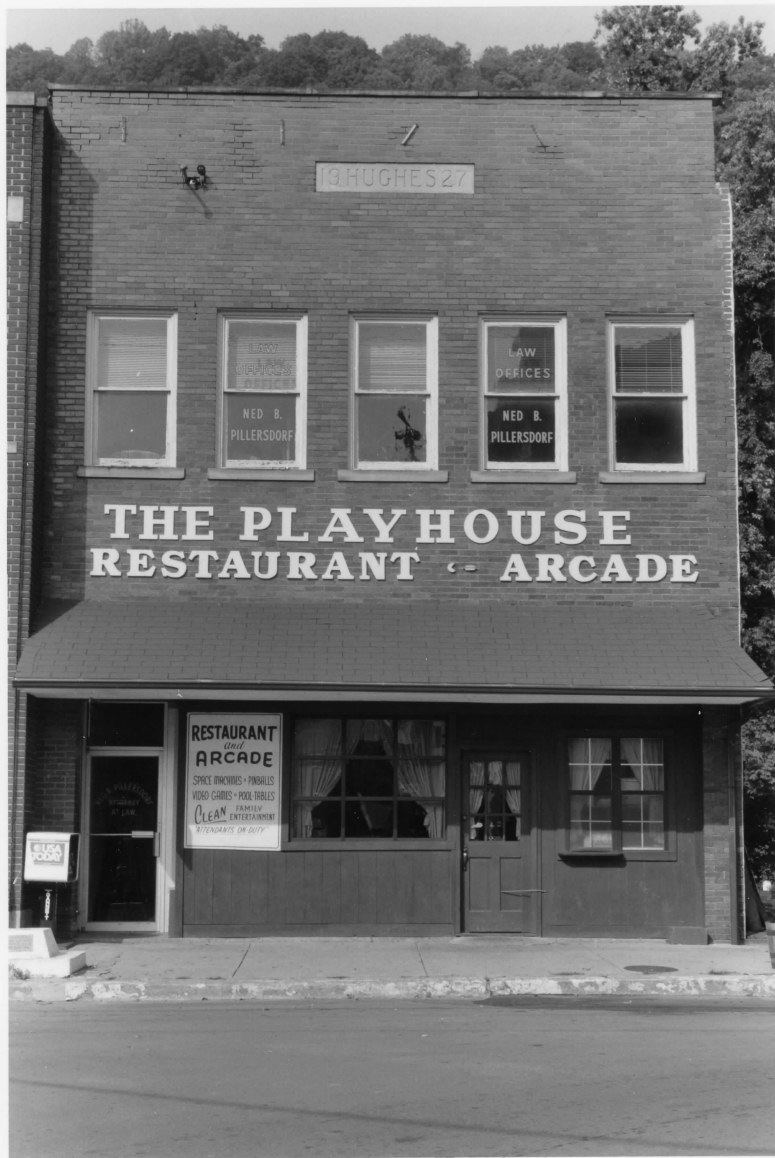
Questions concerning this nomination may be directed to

_____ Phone _____

Signed _____ Date _____



Prestonsburg Mps Floyd Co., KY



Prestonsburg MPS Flaya Co, KY 2



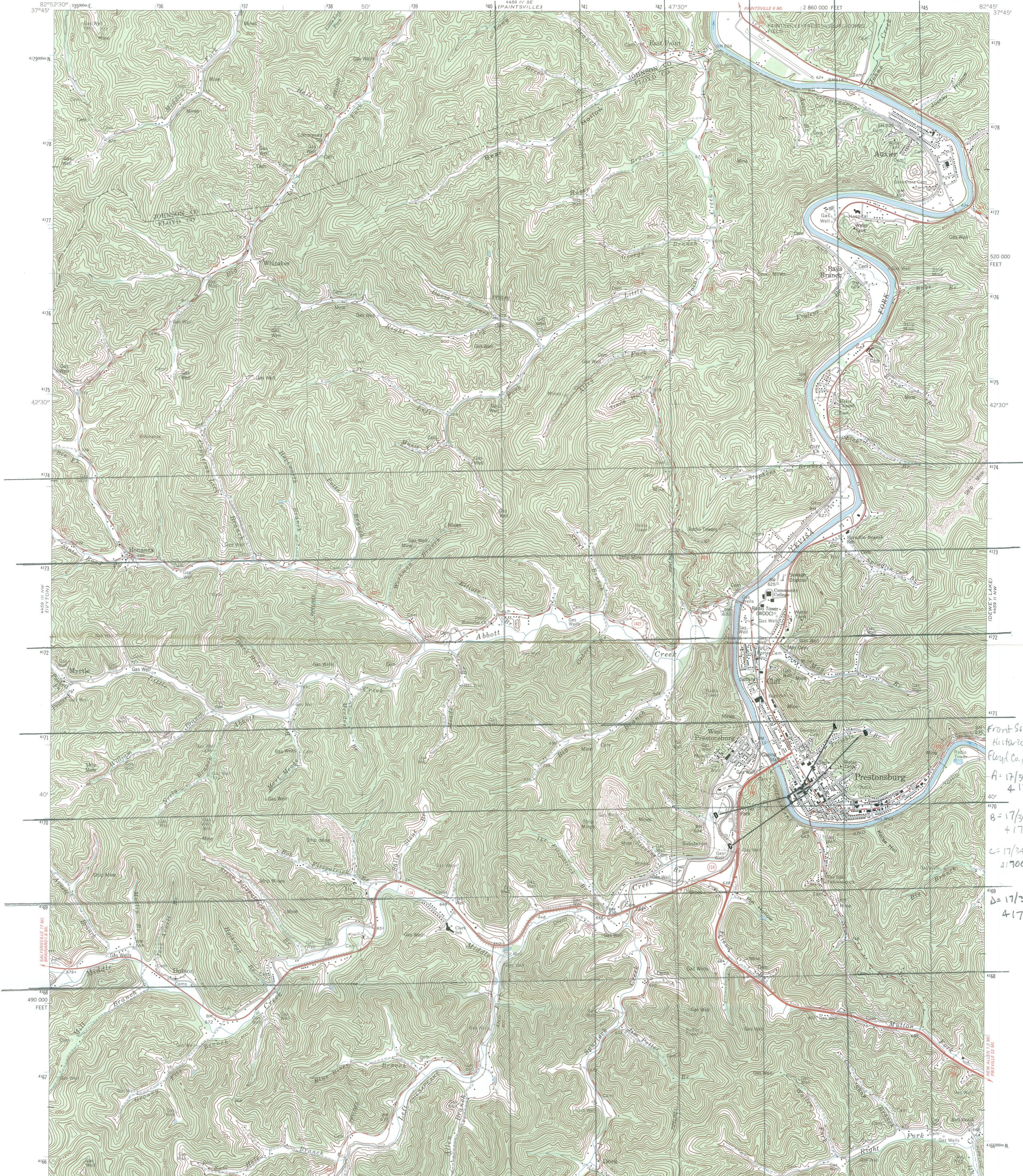
Prestonsburg MPS Floyd Co., KY



Prestonsburg MPS Floyd Co, KY



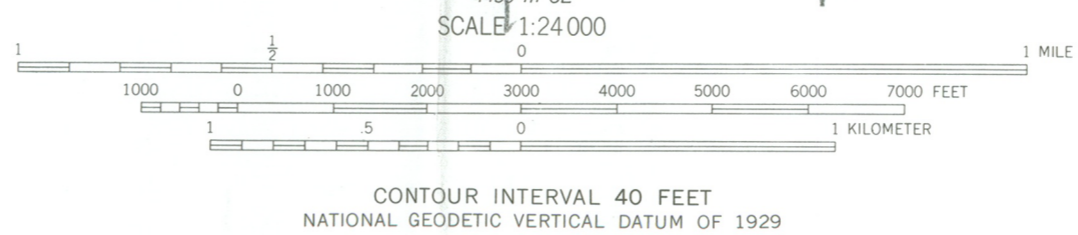
Prestonsburg MRS Floyd Co., KY 5



Front Street
Historic Distrit
Floyd Co., KY
A = 17/343500/
4170180
B = 17/343508/
4170120
C = 17/343360/
4170040
D = 17/343340/
4170100

Mapped, edited, and published by the Geological Survey
Control by USGS, NOS/NOAA, and USCE
Topography by USGS and Consolidated Coal Company
USGS portion by photogrammetric methods from aerial photographs
taken 1951. Field checked 1954. Revised from aerial photographs taken
1975. Field checked 1975. Map edited 1978
Polyconic projection. 1927 North American datum
10,000-foot grid ticks based on Kentucky coordinate system, south zone
1000-meter Universal Transverse Mercator grid ticks, zone 17,
shown in blue

UTM GRID AND 1978 MAGNETIC NORTH
DECLINATION AT CENTER OF SHEET



ROAD CLASSIFICATION
Primary highway, hard surface
Secondary highway, hard surface
Light-duty road, hard or improved surface
Unimproved road
Interstate Route
U. S. Route
State Route

THIS MAP COMPLIES WITH NATIONAL MAP ACCURACY STANDARDS
FOR SALE BY U. S. GEOLOGICAL SURVEY, RESTON, VIRGINIA 22092
KENTUCKY GEOLOGICAL SURVEY, LEXINGTON, KENTUCKY 40506
AND KENTUCKY DEPARTMENT OF COMMERCE, FRANKFORT, KENTUCKY 40601
A FOLDER DESCRIBING TOPOGRAPHIC MAPS AND SYMBOLS IS AVAILABLE ON REQUEST



PRESTONSBURG, KY.
NE/4 PRESTONSBURG 15' QUADRANGLE
N3737.5-W8245/7.5

1978

AMS 4459 III NE-SERIES V853

Historic Resources of Prestonsburg, KY Map #2:
Front Street Historic District (keyed to continuation sheet)