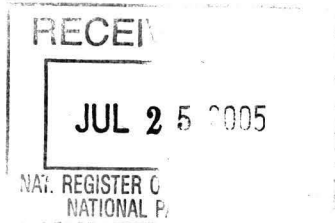


United States Department of the Interior
National Park Service



National Register of Historic Places
Registration Form

This form is for use in nominating or requesting determinations for individual properties and districts. See instructions in *How to Complete the National Register of Historic Places Registration Form* (National Register Bulletin 16A) Complete each item by marking "x" in the appropriate box or by entering the information requested. If an item does not apply to the property being documented, enter "N/A" for "not applicable." For functions, architectural classification, materials, and areas of significance, enter only categories and subcategories from the instructions. Place additional entries and narrative items on continuation sheets (NPS Form 10-9000a). Use a typewriter, word processor, or computer, to complete all items.

1. Name of Property

Historic name Osage Mission Infirmary
Other name/site number Dowd House / 133-4890-0006

2. Location

Street & number 325 Main Street not for publication
City or town St. Paul vicinity
State Kansas Code KS County Neosho Code 133 Zip code 66771

3. State/Federal Agency Certification

As the designated authority under the National Historic Preservation Act, as amended, I hereby certify that this nomination request for determination of eligibility meets the documentation standards for registering properties in the National Register of Historic Places and meets the procedural and professional requirements set forth in 36 CFR Part 60. In my opinion, the property meets does not meet the National Register criteria. I recommend that this property be considered significant nationally statewide locally. (See continuation sheet for additional comments.)
[Signature] 7/21/05
Signature of certifying official/Title Kansas State Historical Society Date
State or Federal agency and bureau

In my opinion, the property meets does not meet the National Register criteria. (See continuation sheet for additional Comments.)
Signature of commenting official /Title _____ Date _____
State or Federal agency and bureau _____

4. National Park Service Certification

I hereby certify that the property is

- entered in the National Register. See continuation sheet.
- determined eligible for the National Register See continuation sheet.
- determined not eligible for the National Register
- removed from the National Register
- other, (explain:)

[Signature] 9/6/05
Signature of the Keeper Date of Action

Osage Mission Infirmary
Name of Property

Neosho Co., Kansas
County and State

5. Classification

Ownership of Property
(Check as many boxes as apply)

- private
- public-local
- public-State
- public-Federal

Category of Property
(Check only one box)

- building(s)
- district
- site
- structure
- object

Number of Resources within Property
(Do not include previously listed resources in the count.)

Contributing	Noncontributing	
1		buildings
		sites
1		structures
		objects
2	total	

Name of related multiple property listing
(Enter "N/A" if property is not part of a multiple property listing.)

N/A

Number of contributing resources previously listed in the National Register

0

6. Function or Use

Historic Functions
(Enter Categories from instructions)

HEALTH CARE: clinic

RELIGION: church-related residence

DOMESTIC: single dwelling

Current Functions
(Enter categories from instructions)

DOMESTIC: hotel

7. Description

Architectural Classification
(Enter categories from instructions)

LATE VICTORIAN: Second Empire

Materials
(Enter categories from instructions)

Foundation: STONE: limestone

Walls: WOOD: weatherboard

Roof: Asphalt, Metal

Other:

Narrative Description

(Describe the historic and current condition of the property on one or more continuation sheets.)

United States Department of the Interior
National Park Service

National Register of Historic Places
Continuation Sheet

Osage Mission Infirmary
Neosho Co., Kansas

Section number 7 Page 1

DESCRIPTION

Summary

Located at 325 Main Street in St. Paul, the Osage Mission Infirmary is a Second Empire-style, one-and-a-half story, wood-frame building with a dormered, mansard roof. Originally completed in 1872 as an infirmary, the building was moved to its current location in 1912 for use as a private residence.

Elaboration

Originally, the Osage Mission Infirmary was part of, and built in the same style as, the St. Francis Institute, a Jesuit Community complex. Located just west of the St. Francis Church and across the road from St. Ann's Academy, the nominated property served as an infirmary under the Jesuits and the Sisters of Loretto until 1894 when the property transferred ownership to the Passionist ministries. In 1912, to make room for a new Passionist monastery, the infirmary building was purchased and moved via log rollers to its current location by John T. Dowd, a former student at the mission.

The house has an almost square plan, measuring 35' X 32'. It sits upon a limestone foundation, hand-cut from a local quarry, raised approximately 27" above grade. Native limestone lines the partial basement and original heating pit. Situated beneath the main dining room, the basement measures 30' X 18'.

The front, or eastern, elevation faces Main Street. An 80" deep porch extends for 30' along nearly the full length of the front façade. The porch, which was added shortly after the move in 1912, features a shallow hipped roof with a small centered gable decorated with wood shingles. The roof is supported by four limestone piers with Tuscan columns. The two outer piers each contain three clustered columns, while the two piers flanking the staircase and supporting the centered gable each have a pair of columns. Square-cut, ashlar limestone walls also flank the front steps on each side. All stonework has been painted white. The three-ranked, symmetrical façade consists of a single, eight-pane entry with full-length sidelights flanked by a large window on each side. Each window contains a small upper sash with leaded glass designs over a large single pane.

The mansard roof section on this elevation is fenestrated by three gabled dormers. The two outside dormers each contain a single four-over-four, double-hung window with a segmental-arched upper sash. The larger central dormer contains a pair of the segmental-arched, four-over-four windows. The four corners of each window is adorned with small scrolled brackets.

The north and south elevations are identical in fenestration. The first story contains a central pair of conventional four-over-four, double-hung windows with projecting crowns flanked by a similar single

**United States Department of the Interior
National Park Service**

**National Register of Historic Places
Continuation Sheet**

Osage Mission Infirmary
Neosho Co., Kansas

Section number 7 **Page** 2

four-over-four window at each end (a total of four windows per elevation), and the mansard roof is identical in composition to the front elevation.

The rear, or western, elevation originally adhered to the house's three ranked façade theme with three double-hung windows. This elevation has been slightly altered by the addition of a small, shed-roof kitchen extension on the southern end of the elevation and the addition of a deck measuring 20' X 28' which gracefully integrates an ADA ramp for handicap accessibility. The mansard roof on the rear elevation deviates from the other three by having only a single window in the center dormer.

Inside, the building has remained virtually intact with few changes to its main character-defining features. The house maintains its interior four-paneled doors and original hardware, baseboards, and the door and window moldings, which incorporate an egg-and-dart motif.

The first level consists of six rooms, all with 11' 8" ceilings. The front porch provides entry into the formal foyer. Two oak Tuscan columns on low oak pedestals separate the foyer from the central living room. In this space, the staircase opens to the second level and is surrounded by a balustrade of octagonal newel posts and square balusters. The north side of the first level contains a bedroom and parlor area. All window and door casings in the first floor parlor remain unpainted. The south side of the first level contains the dining area and kitchen. The west end of the first level contains the pantry and utility addition.

The second story of the house consists of five rooms with an open stairway and 11'3" ceilings. A wide corridor services all rooms, as well as a closet that occupies the space originally containing a large brick chimney originating from the basement. The chimney is evident in a historic photograph depicting the relocation of the building, but has long since been removed. This floor contains the infirmary room with original cabinetry used for storing medical supplies. In addition, three bedrooms and a bathroom are arranged around the spacious hallway.

There is a well on the lot that has been capped with concrete and a reconstructed stone watering trough that was found in the ground beside the well.

Osage Mission Infirmary

Name of Property

Neosho Co., Kansas

County and State

8. Statement of Significance

Applicable National Register Criteria

(Mark "X" in one or more boxes for the criteria qualifying the property for National Register)

- A Property is associated with events that have made a significant contribution to the broad patterns of our history
B Property is associated with the lives of persons significant in our past.
C Property embodies the distinctive characteristics of a type, period, or method of construction or represents the work of a master, or possesses high artistic values, or represents a significant and distinguishable entity whose components lack individual distinction.
D Property has yielded, or likely to yield, information important in prehistory or history.

Criteria Considerations

(Mark "x" in all the boxes that apply.)

Property is:

- A owned by a religious institution or used for religious purposes.
B removed from its original location.
C a birthplace or grave.
D a cemetery.
E a reconstructed building, object, or structure.
F a commemorative property.
G less than 50 years of age or achieved significance within the past 50 years

Narrative Statement of Significance

(Explain the significance of the property on one or more continuation sheets.)

Areas of Significance

(Enter categories from instructions)

Architecture

Period of Significance

1872, 1912

Significant Dates

1872, 1912

Significant Person

(Complete if Criterion B is marked above)

N/A

Cultural Affiliation

N/A

Architect/Builder

Unknown

9. Major Bibliographical References

Bibliography

(Cite the books, articles, and other sources used in preparing this form on one or more continuation sheets.)

Previous documentation on file (NPS):

- preliminary determination of individual listing (36 CFR 67) has been requested
previously listed in the National Register
previously determined eligible by the National Register
designated a National Historic Landmark
recorded by Historic American Buildings Survey #
recorded by Historic American Engineering Record #

Primary location of additional data:

- State Historic Preservation Office
Other State agency
Federal agency
Local government
University
Other

Name of repository:

Osage Mission - County Museum

United States Department of the Interior
National Park Service

National Register of Historic Places
Continuation Sheet

Osage Mission Infirmery
Neosho Co., Kansas

Section number 8 Page 1

STATEMENT OF SIGNIFICANCE

Summary

The Osage Mission Infirmery is being nominated under Criterion C with local significance as an excellent vernacular example of the Second Empire style of architecture.

History

The current town of St. Paul was founded in 1847 as an Osage Mission. According to Andreas' *History of Kansas*, from 1829 to 1847 various Catholic missionaries visited the Osage; however, as the tribe desired a permanent missionary, the Bishop of St. Louis, Peter Kendrick, appointed Father John Schoemakers, a Jesuit, as Superior of the mission. Called the "Apostle to the Osage" and the "Father of civilization in southeast Kansas," Schoemakers served for 36 years as spiritual director, doctor, steward, lawyer, judge, catechist, and preacher to the Osage. He also served as an officially appointed U.S. postmaster of Osage Mission from 1851 to 1864. When the Osage were relocated in 1870, he ministered to the needs of the newly arrived settlers. Schoemakers initiated construction of the present St. Francis Hieronymo Church to replace the original log structure, but the church was not dedicated until the year following his death in July 1883. Father Schoemakers has been credited as the first white man to found a permanent settlement in southeast Kansas (*History of Neosho County* by W.W. Graves)

Schoemakers arrived at Osage Mission on April 29th, 1847 and took possession of two buildings then being constructed by the Indian Department. When completed, one building was used for the education of Osage boys. With the arrival of Mother Bridget Hayden and the Sisters of Loretto at the Foot of the Cross from St. Louis in October 1847, a school for Osage girls was established in the other building. Both schools were known as Manual Labor Schools.

Hayden spent the next 43 years ministering to the physical, spiritual, and intellectual needs of the young women in her care at the mission. From 1859 until her death in 1890, she was the Superior of the Sisters of Loretto at the mission. The Sisters of Loretto at the Foot of the Cross were the first wholly American sisterhood to begin and continue without foreign affiliation. The order was founded by Reverend Charles Nerinckx in 1812 in Kentucky. The sisters traveled with the early pioneers to provide Christian education for the children of the rugged frontier towns. Today, far different from the first log-constructed convent schools are the modern Loretto elementary schools, high schools, and colleges.

The Osage sold their lands to the U.S. Government in 1870 and moved to a new reservation in the Indian Territory. As the Manual Labor Schools had been the central focus of the settlement at Osage Mission, the schools adapted to service the needs of the incoming white settlers. On May 7th, 1870, the

United States Department of the Interior
National Park Service

National Register of Historic Places
Continuation Sheet

Osage Mission Infirmary
Neosho Co., Kansas

Section number 8 Page 2

school for boys was chartered as the St. Francis Institute, and the school for girls was chartered on September 19, 1870 as St. Ann's Academy.

During this period, the schools were expanded, and the nominated building was constructed in 1872 as an infirmary. The Jesuits left the mission in 1892, and two years later the Passionists ministry moved into the former Jesuit complex at Osage Mission. The Passionist ministry began with an Italian, Paul Francis Daneo, who became a religious hermit in 1720 in response to his experiences on a crusade against the Turks. During his hermitage, he wrote a Rule, which was eventually approved by the Vatican in 1769. The men who followed Paul would become known as Passionists because of their dedication to and preaching of the passion and death of Christ. In 1895, the name of Osage Mission was changed to St. Paul in honor of the Passionist founder. It was during their tenure that the sale and relocation of the Infirmary took place.

Relocation

In 1912, the original infirmary, used as a guesthouse by the Passionists, was sold to John T. Dowd and moved a ½ mile via log rollers to its current location at 325 Main Street. Dowd was born in Ladore, Kansas on January 9, 1872, and attended school in Osage Mission and later the normal school in Pittsburg, Kansas. He then worked as a teacher and stockman in Neosho County. In 1903, Dowd purchased the Bahney hardware store in St. Paul. Over the years, he served on the City Council, the Board of Directors of the Mission State Bank, and as a delegate for the Democrat party. Dowd worked in the hardware store until he was appointed postmaster of St. Paul on April 19, 1936, and he served in that position until 1951. Dowd lived in the nominated property until a few months after his wife's death in 1952 when he moved to Marysville to live with his son. After Dowd's death in 1957, the property changed ownership several times. The current owners, Henri and Susan Coeme, acquired the property in 1999 and restored the building.

Architectural Significance

The Osage Mission Infirmary is an excellent example of a vernacular interpretation of the Second Empire style of architecture. The house incorporates these primary design elements associated with the Second Empire tradition: the mansard roof, the central chimney (no longer extant, but its volume preserved), the simple wall cladding of clapboards, and the projecting dormer windows. As a vernacular interpretation, the design ignores stylistic elements such as massive cornice and supporting brackets, and the decorative ironwork that are associated with high style examples. The front porch, while exhibiting the size and massing of those used for Second Empire-style buildings of the period, was added after the building was moved in 1912.

United States Department of the Interior
National Park Service

National Register of Historic Places Continuation Sheet

Osage Mission Infirmary
Neosho Co., Kansas

Section number 8 **Page** 3

The original infirmary did not have a porch. With its clustered Tuscan columns, the c. 1912 porch provides a glimpse of the then-popular Colonial Revival style of residential architecture.

United States Department of the Interior
National Park Service

National Register of Historic Places
Continuation Sheet

Osage Mission Infirmary
Neosho Co., Kansas

Section number 9 Page 1

BIBLIOGRAPHY

Casey, Mary Frances VanLeeuwen, Ed. *Osage Mission Sesquicentennial: Celebrating 150 years.* (Jostens, 1997).

Cutler, William G. *History of the State of Kansas.* (Chicago, IL: A.T. Andreas, 1883).

Fitzgerald, Sister Mary Paul. *Beacon on the Plains.* (Leavenworth, KS: The Saint Mary College, 1939).

Graves, William W., compiler. *Annals of St. Paul.* St. Paul, Kansas: Journal Press, 1942 (1979).

Graves, William W. *Life and Times of Mother Bridget Hayden.* (St. Paul, Kansas: Journal Press, 1938).

Kinsella, T. H. *The History of Our Cradle Land.*
(http://freepages.genealogy.rootsweb.com/~kinfolkkorner/CRADLE_LAND/clpt2.html – 1921).

Laba, Gerald. *Compassion Magazine.* “The Passionists: 150 Years in America, continued – Expansion and Adaptation.” (Special Edition, Number 67, 2002).

Mail and Breeze Newspaper. St. Paul, Kansas. (July 13, 1901).

Morrison, T. F. “Mission Neosho: The First Kansas Mission.” *Kansas Historical Quarterly.* (August, 1935; Vol. 4, No. 3, Pages 227-234).

Neosho County Assessor. Property information card.

Osage Mission Infirmary
Name of Property

Neosho Co., Kansas
County and State

10. Geographical Data

Acreage of Property .43

UTM References

(Place additional UTM references on a continuation sheet.)

1

1	5	3	0	8	0	8	0	4	1	5	4	3	2	0
Zone		Easting						Northing						

2

Zone		Easting						Northing						

3

Zone		Easting						Northing						

4

Zone		Easting						Northing						

See continuation sheet

Verbal Boundary Description

(Describe the boundaries of the property on a continuation sheet.)

Boundary Justification

(Explain why the boundaries were selected on a continuation sheet.)

11. Form Prepared By

Name/title Stefanie McKenzie, Scott Walters, and Robert Beardsley; Edited by KSHS staff

Organization _____ Date 09/01/04

Street & number 1460 Reynolds St. Telephone 410-539-2542

City or town Baltimore State MD Zip code 21230

Additional Documentation

Submit the following items with the completed form:

Continuation Sheets

Maps

A USGS map (7.5 or 15 minute series) indicating the property's location.

A sketch map for historic districts and properties having large acreage or numerous resources.

Photographs

Representative black and white photographs of the property.

Additional items

(Check with SHPO or FPO for any additional items)

Property Owner

Name Henri & Susan Coeme

Street & number 696 E 640 Avenue Telephone 620-347-4948

City or town Arma State KS Zip code 66712

Paperwork Reduction Act Statement: This information is being collected for applications to the National Register of Historic Places to nominate properties for listing or determine eligibility for listing, to list properties, and to amend existing listings. Response to this request is required to obtain a benefit in accordance with the National Historic Preservation Act, as amended (16 U.S.C. 470 et seq.).

Estimated Burden Statement: Public reporting burden for this form is estimated to average 18.1 hours per response including time for reviewing instructions, gathering and maintaining data, and completing and reviewing the form. Direct comments regarding this burden estimate or any aspect of this form to the Chief, Administrative Services Division, National Park Service, P.O. Box 37127, Washington, DC 20013-7127; and the Office of Management and Budget, Paperwork Reductions Projects (1024-0018), Washington, DC 20503

United States Department of the Interior
National Park Service

National Register of Historic Places Continuation Sheet

Osage Mission Infirmary
Neosho Co., Kansas

Section number 10 **Page** 1

VERBAL BOUNDARY DESCRIPTION

Lots 1, 2, 3, 4, 5, 6, 8 and 10, Block 27, Osage Mission, now town of St. Paul, Neosho County, Kansas.

BOUNDARY JUSTIFICATION

The nominated property is located on a town parcel, having been removed from its original location near the St. Francis Church to provide room for new construction. The house was moved to its current location in 1912 and has attained a historic association with this parcel.

United States Department of the Interior
National Park Service

National Register of Historic Places
Continuation Sheet

Osage Mission Infirmary
Neosho Co., Kansas

Section number 11 Page 1

Photographic Information

The following information is consistent for all photographs:

1. Osage Mission Infirmary
2. Neosho Co., Kansas
3. Photograph by Patrick Zollner
4. May 2, 2005
5. Negative on file at KSHS

The following information is applicable to specific photographs:

<u>#</u>	<u>Description of View</u>
1.	View from the east/southeast
2.	View from the northeast
3.	View from the north
4.	View from the northwest
5.	View from the south
6.	View of front entrance from the east
7.	View of interior staircase from the east
8.	View of living room and foyer from the northwest
9.	View of living room pocket doors from the east
10.	View of dining room from the northeast

United States Department of the Interior
National Park Service

National Register of Historic Places
Continuation Sheet

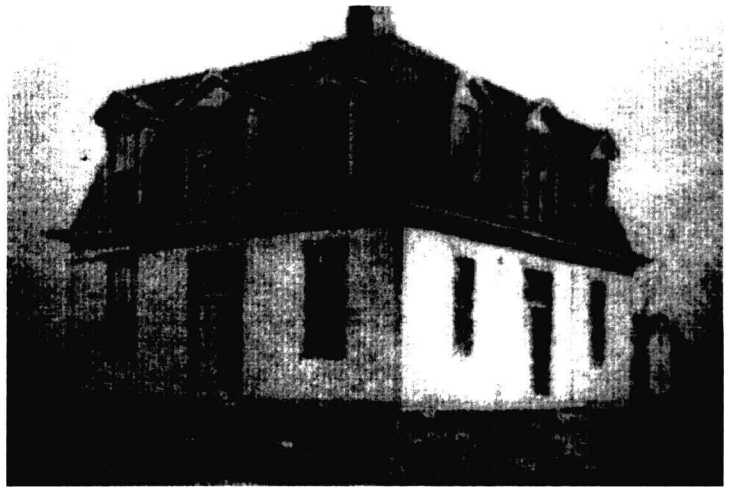
Osage Mission Infirmary
Neosho Co., Kansas

Section number 11 Page 2

Historic Photographs



1. St. Francis Institute For Boys
2. St. Francis Hall
3. Infirmary Building
4. St. Francis Monastery
5. St. Francis Church



UNITED STATES DEPARTMENT OF THE INTERIOR
NATIONAL PARK SERVICE

NATIONAL REGISTER OF HISTORIC PLACES
EVALUATION/RETURN SHEET

REQUESTED ACTION: NOMINATION

PROPERTY Osage Mission Infirmary
NAME:

MULTIPLE
NAME:

STATE & COUNTY: KANSAS, Neosho

DATE RECEIVED: 7/25/05 DATE OF PENDING LIST: 8/12/05
DATE OF 16TH DAY: 8/27/05 DATE OF 45TH DAY: 9/07/05
DATE OF WEEKLY LIST:

REFERENCE NUMBER: 05000976

REASONS FOR REVIEW:

APPEAL: N DATA PROBLEM: N LANDSCAPE: N LESS THAN 50 YEARS: N
OTHER: N PDIL: N PERIOD: N PROGRAM UNAPPROVED: N
REQUEST: N SAMPLE: N SLR DRAFT: N NATIONAL: N

COMMENT WAIVER: N

ACCEPT RETURN REJECT 9.6.05 DATE

ABSTRACT/SUMMARY COMMENTS:

Entered in the
National Register

RECOM./CRITERIA _____

REVIEWER _____ DISCIPLINE _____

TELEPHONE _____ DATE _____

DOCUMENTATION see attached comments Y/N see attached SLR Y/N

If a nomination is returned to the nominating authority, the nomination is no longer under consideration by the NPS.



Osage Mission Infirmary
Neosho Co., Kansas

#1



Osage Mission Infirmary
Neosho Co., Kansas

#2



Osage Mission Infirmary #3
Neosho Co., Kansas



Osage Mission Infirmary
Neosho Co., Kansas

#4



Osage Mission Infirmary #5
Neosho Co., Kansas



Osage Mission Infirmary
Neosho Co., Kansas #6



Osage Mission Infirmary #7
Neosho Co., Kansas



Osage Mission Infirmary #8
Neosho Co., Kansas

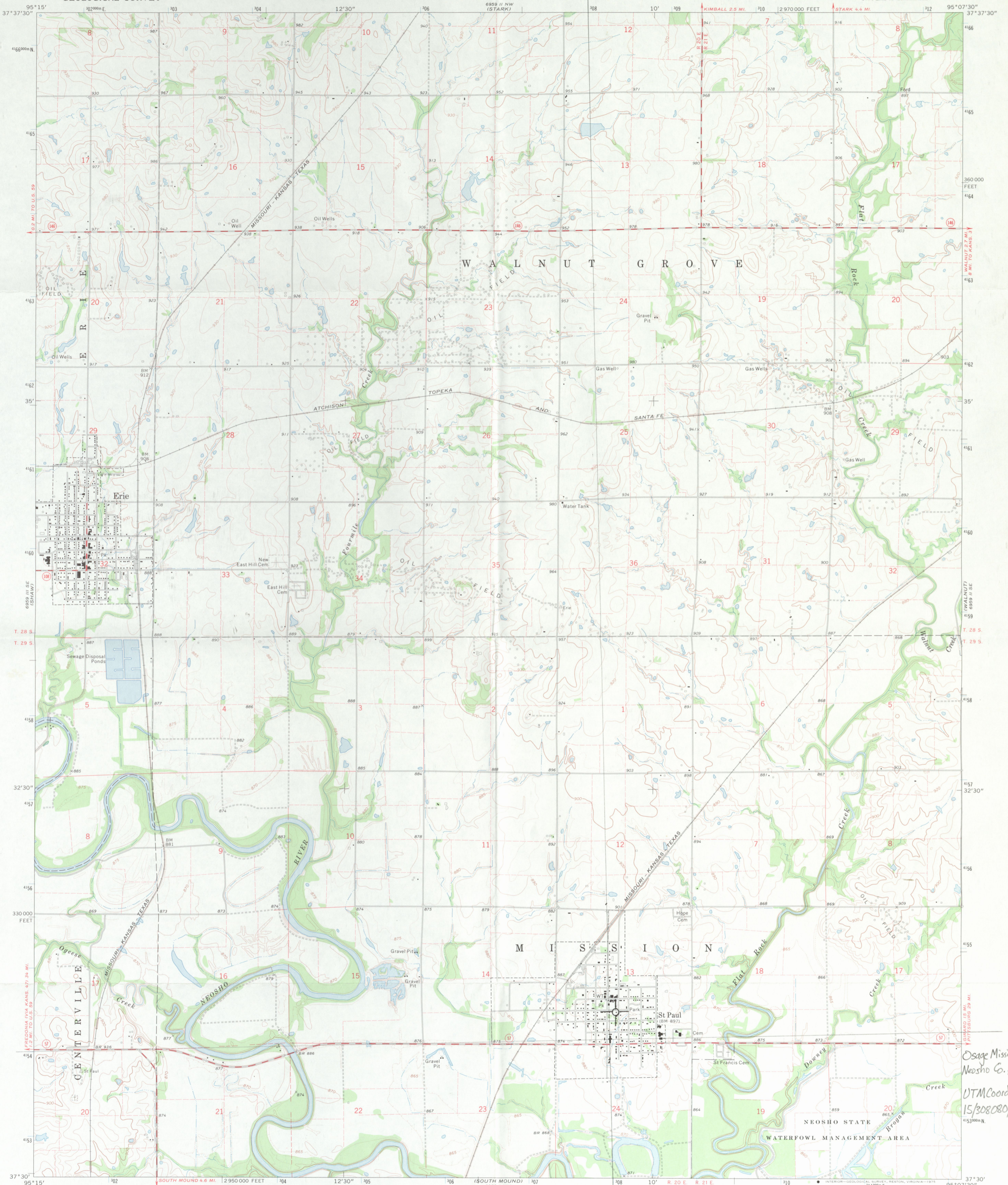


Osage Mission Infirmary #9
Nedsho Co., Kansas

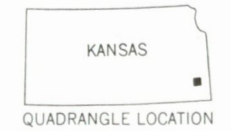
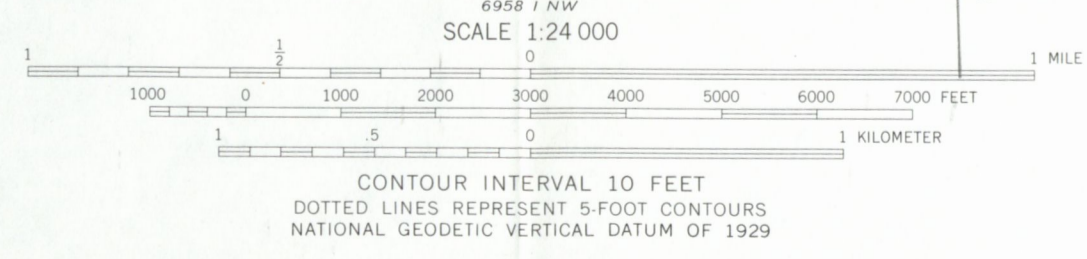
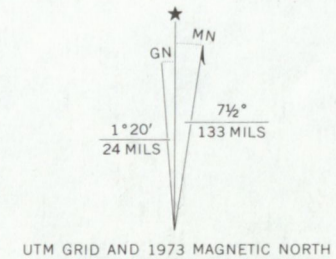


Osage Mission Infirmary
Neosho Co., Kansas

10



Mapped, edited, and published by the Geological Survey in cooperation with State of Kansas agencies
Control by USGS and USC&GS
Topography by photogrammetric methods from aerial photographs taken 1972-73. Field checked 1973
Projection and 10,000-foot grid ticks: Kansas coordinate system, south zone (Lambert conformal conic)
1000-meter Universal Transverse Mercator grid ticks, zone 15, shown in blue. 1927 North American datum
Fine red dashed lines indicate selected fence and field lines where generally visible on aerial photographs. This information is unchecked



ROAD CLASSIFICATION

Primary highway, hard surface	Light-duty road, hard or improved surface
Secondary highway, hard surface	Unimproved road
Interstate Route	U.S. Route
	State Route

THIS MAP COMPLIES WITH NATIONAL MAP ACCURACY STANDARDS
FOR SALE BY U.S. GEOLOGICAL SURVEY, DENVER, COLORADO 80225, OR RESTON, VIRGINIA 22092
AND BY THE STATE GEOLOGICAL SURVEY, LAWRENCE, KANSAS 66044
A FOLDER DESCRIBING TOPOGRAPHIC MAPS AND SYMBOLS IS AVAILABLE ON REQUEST

ERIE, KANS.
SW/4 ERIE 15' QUADRANGLE
N3730—W9507.5/7.5

1973

AMS 6959 II SW—SERIES V878

Osage Mission Infirmary
Neosho Co., Kansas
UTM Coordinates:
15/308080/4154320