

United States Department of the Interior
National Park Service

RECEIVED
JUL 13 1990

National Register of Historic Places
Registration Form

NATIONAL REGISTER

This form is for use in nominating or requesting determinations of eligibility for individual properties or districts. See instructions in *Guidelines for Completing National Register Forms* (National Register Bulletin 18). Complete each item by marking "x" in the appropriate box or by entering the requested information. If an item does not apply to the property being documented, enter "N/A" for "not applicable." For functions, styles, materials, and areas of significance, enter only the categories and subcategories listed in the instructions. For additional space use continuation sheets (Form 10-900a). Type all entries.

1. Name of Property

historic name Newell A. Whiting house
other names/site number John R. Murphy house

2. Location

street & number 1106 Iowa Avenue not for publication
city, town Onawa vicinity
state Iowa code IA county Monona code 133 zip code 51040

3. Classification

Ownership of Property

- private
- public-local
- public-State
- public-Federal

Category of Property

- building(s)
- district
- site
- structure
- object

Number of Resources within Property

Contributing	Noncontributing
<u>1</u>	<u>1</u> buildings
<u>1</u>	<u>1</u> sites
<u>1</u>	<u>1</u> structures
<u>2</u>	<u>1</u> objects
	<u>1</u> Total

Name of related multiple property listing:
N/A

Number of contributing resources previously listed in the National Register 0

4. State/Federal Agency Certification

As the designated authority under the National Historic Preservation Act of 1966, as amended, I hereby certify that this nomination request for determination of eligibility meets the documentation standards for registering properties in the National Register of Historic Places and meets the procedural and professional requirements set forth in 36 CFR Part 60. In my opinion, the property meets does not meet the National Register criteria. See continuation sheet.

[Signature]
Signature of certifying official
State Historical Society of Iowa
State or Federal agency and bureau

7/5/90
Date

In my opinion, the property meets does not meet the National Register criteria. See continuation sheet.

Signature of commenting or other official
State or Federal agency and bureau

Date

5. National Park Service Certification

I, hereby, certify that this property is:

- entered in the National Register.
 See continuation sheet.
- determined eligible for the National Register. See continuation sheet.
- determined not eligible for the National Register.
- removed from the National Register.
- other, (explain): _____

[Signature] Entered in the National Register 8/10/90

[Signature] Signature of the Keeper Date of Action

6. Function or Use

Historic Functions (enter categories from instructions)

Domestic/single dwelling

Current Functions (enter categories from instructions)

Domestic/single dwelling

7. Description

Architectural Classification

(enter categories from instructions)

Late Victorian/Italianate

Materials (enter categories from instructions)

foundation Brick

walls Brick

roof Other/Composition shingles

other Metal

Describe present and historic physical appearance.

Attractively sited on a large corner lot in one of Onawa's oldest residential neighborhoods, the Newell A. Whiting house is a 2 1/2 story edifice, constructed of locally produced pinkish-toned brick laid in running bond that rests on foundations of the same material, and is capped with a medium-pitched gable roof that features a square-shaped metal-clad cupola at its apex and flanked by interior end, decorative chimney stacks with stone caps. Stylistically, the house is Italianate and is virtually a textbook example of the center-gable subtype of that mode.

Italianate details include:

overhanging eaves with decorative metal brackets (styled to look like stone); modillion; cupola, clad with metal molded to look like stone; hip roof.

tall, thin (2 light) windows, shallow arched with metal hood moldings; some paired.

one story long porch on east side of house, supported by cast metal Corinthian columns. double walnut front doors with etched glass panels and transom, heavy moldings, brass hardware.

facade symmetry--central entrance is flanked by matching bay windows; house is rectangular (nearly square) with an ell at the rear.

anacones and cornices.

The stylistic elements are consistent on all four sides of the building. There is some evidence of the designer's consciousness of the house's corner location, as dominant elements such as bay windows, porches and entrances are located on the two sides which face the streets. The front of the house has a very formal, symmetrical arrangement of windows and entrances, while the other sides are less formal.

Facade (south side): The double front doors of walnut with etched and beveled glass windows and transom are centered between two identical 5' x 9' bays, each with three tall two-light windows, with formed metal hood molding and sills. A narrow, flat bracketed roof extends across the first floor, forming the roof of the bays and roof for the entrance. Originally, two metal Corinthian columns supported the roof on either side of the entrance. The six windows on the second story are grouped. Two align with each bay and are the same size and type as the first floor windows. Two narrower windows are paired over the front doors. The third story features a large central gable. Two small, narrow two-light windows are paired under a heavy hood molding and centered in the gable and over the central windows on the second floor and the entry on the first floor. The bottom of the windows aligns with the bottom of the fascia on the main roofline.

East wall: Windows in this wall are the same sizes and type as in facade. A single window is near the front corner of the house. A second identical window shown in old photos was filled in when a fireplace was added to the living room. A 4' x 9' bay fills

See continuation sheet

United States Department of the Interior
National Park Service

National Register of Historic Places Continuation Sheet

Section number 7 Page 1

CFN-259-1116

It differs from the front bays in its slightly smaller size and square shape. It has one tall, narrow window on each side and two identical paired windows on the outer side. The roofline of this bay aligns with the front bays. An ell at the rear of the house forms a second wall on this side. A 10' x 24' covered porch extends almost the full length of the 28' ell. Three cast metal Corinthian columns support the roof. Two windows flank a door on the long wall of the porch. Another door (to the living room) is in the short wall of the porch. Windows on the second floor of the main wall are stacked over those on the first floor--two single windows with a pair of windows over the bay. The ell is only two stories tall with a similar roofline as the main part of the house. Most of the second story wall on the ell is the central gable with a pair of short, narrow windows centered in the gable.

North wall: Ell and porch extend almost full width of house. First floor of ell on the north side had only one door near the northeast corner (originally to the summer kitchen) and no windows. Second story has large central gable with one arched window. The third story is part of the main structure, with the same large central gable and pair of small windows as other sides of the house.

The west wall of the main structure is similar to the east wall, with two single windows stacked on the first and second floors. Instead of a bay, as on the east wall, there are a pair of windows on both the first and second floors. The same large central gable on the third floor has the same pair of small windows centered. The west wall of the ell has been altered somewhat. On the first story near the northwest corner, a garage door that was cut through the brick wall in the 1930s has been filled with a large window, consisting of four panes of plain and one long antique pane laced with diamonds with circles of beveled glass. A tall, narrow window of the same size and type as most of the other windows is slightly off-center in the west wall. To the right of it is a door which, judging from the size, molding and glass panel, may originally have been a window. The second floor of the ell has the same large central gable and pair of small windows as the other walls.

The interior of the house is highly compatible with the exterior, and remains substantially the same as originally built. The woodwork, doors, hardware, floors, and windows are all original. The high ceilings, ornate staircase and long central hallway flanked by the living room and parlor (now dining room) are typical of the period.

<u>Feature</u>	<u>Location</u>	<u>Discussion</u>
Staircase	Front hall	Carved walnut newelpost and cherry banister, turned and carved spindles, paneled inlays of burl walnut in newelpost with carvings of beadwork, acanthus leaves, ivy and floral; continues from first to third story
Double interior doors	Living room, dining room, kitchen	Paneled with heavy woodwork; painted white since 1934; dark varnish before then.
Curved wall	Rear of entry	Follows curve of first stair landing above.
Curved wall	West bedroom	Forms closet wall.

United States Department of the Interior
National Park Service

National Register of Historic Places
Continuation Sheet

Section number 7 Page 2

CFN-259-1116

<u>Alteration</u>	<u>Date</u>	<u>Discussion</u>
Following changes were made by Charles and Esther Murphy:		
Front porch columns removed	1934	
Front porch surface and steps changed to brick	1934	
Side porch screened	1934	
Shutters added	c. 1950	Wooden louvered shutters
Chimney removed	between 1934-1950	
Summer kitchen removed	1934	Frame building at rear of house.
Carriage house removed	1934?	Was made of same brick as house.
Portion of west wall removed on first floor	1934	Original kitchen was made into garage (door opening)
Following alteration was made by John E. Murphy:		
Frame garage added	1983	Garage in rear of house made into family room
Interior alterations: Following alterations were made by Charles and Esther Murphy:		
Original parlor and dining room joined to make larger living room	1934	Steel beam added to ceiling to replace interior wall which was removed.
Brick heatilator fire-place	1934	Added at the insistence of Charles Murphy over resistance by interior designer. Virtually the only element not true to the style of the house.
Music room was remodeled into kitchen	1934	
Original kitchen remodeled into garage	1934	Wainscoting, flooring and windows remained.
Stairway from original kitchen to rear of second story removed	1934	Evidence of stairway was found during 1983 remodeling.
Stairway from original kitchen to root cellar removed	1934	Evidence of stairway can be seen in root cellar.
Bathroom added to second floor from portion or large central hallway	1934	Original windows and flooring remain; vertical space for pipes carved out of brick interior wall in first floor entry hall, plastered over.

United States Department of the Interior
National Park Service

National Register of Historic Places
Continuation Sheet

Section number 7 Page 3

CFN-259-1116

<u>Alteration</u>	<u>Date</u>	<u>Discussion</u>
Two east bedrooms on second floor remodeled into master bedroom	1934	Wall removed, two clothes closets and small cedar closet added.
Fireplace added to master bedroom	1934	White wooden mantel faced with blue, white and yellow painted Italian tiles; directly above living room fireplace.
Following alteration was made by John E. Murphy:		
Garage (original kitchen) remodeled into family room	1983	Floors had to be replaced; original wainscoting, windows, doors and woodwork retained; some wainscoting duplicated; garage door space filled with plain glass and antique beveled glass window.

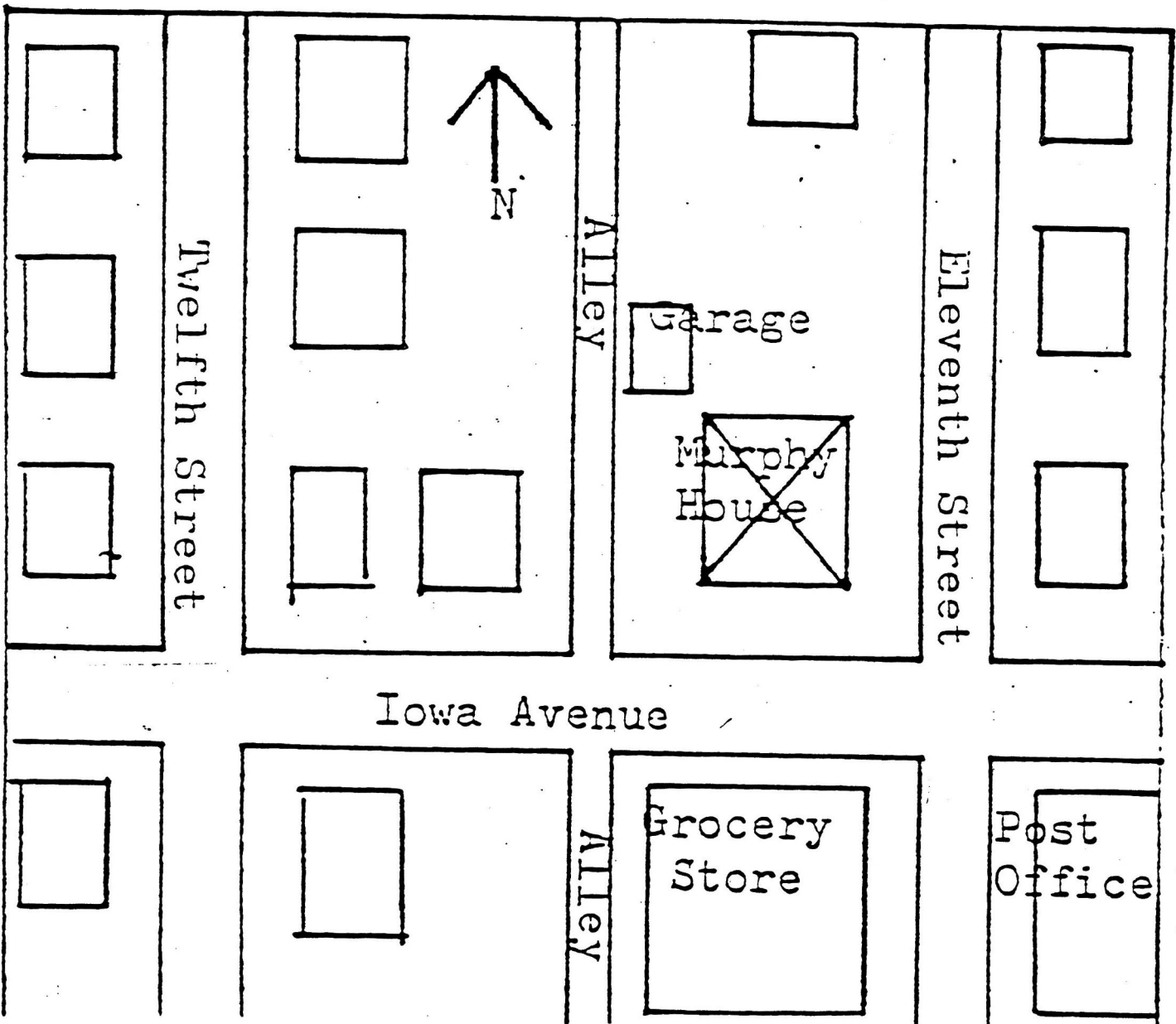
The house dominates the south end of four adjacent flat lots paralleling Eleventh Street on the east. Iowa Avenue, the town's main street, offers a close view to passers-by. On the south and east sides, a wrought iron fence installed in 1884 adds its Victorian charm. The yards surrounding the house are elaborately landscaped with a wide variety of trees, shrubs and flowering plants. A red rock curved driveway off the alley to the west coordinates with the rose colored brick of the house. A single garage of rose-stained wood (1983) sits next to the alley and the driveway. Extending east from the garage and designed around a large hard maple, an elevated patio, made from square bricks, is bordered with a hosta hedge. Originally a carriage house (its foundation is still underground) sat in the vicinity of the present garage. It is said that it had a cupola just like that of the main house, although no pictures have been located to document its appearance. A frame summer kitchen was attached to the north end of the house. The Sanborn maps of early years show other buildings attached to or adjacent to the carriage house along the alley. They are supposed to be a barn and sheds for animals, etc. Cistern remains--to the west and east of the ell on the north of the main house--fed underground to the main kitchen. Cement walkways (now underground) led to the carriage house.

United States Department of the Interior
National Park Service

National Register of Historic Places Continuation Sheet

Section number 7 Page 4

CFN-259-1116

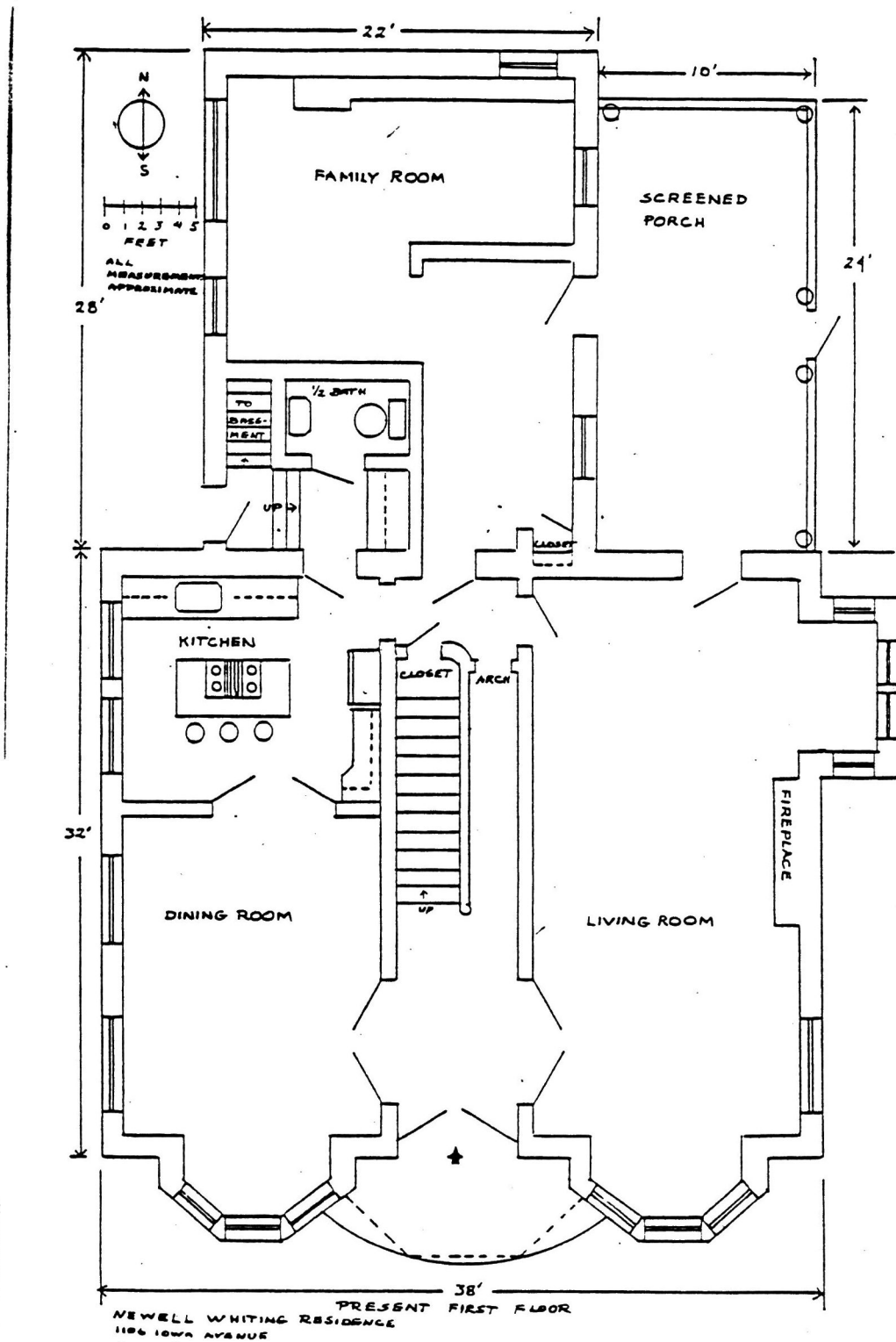


United States Department of the Interior
National Park Service

National Register of Historic Places Continuation Sheet

Section number 7 Page 5

CFN-259-1116

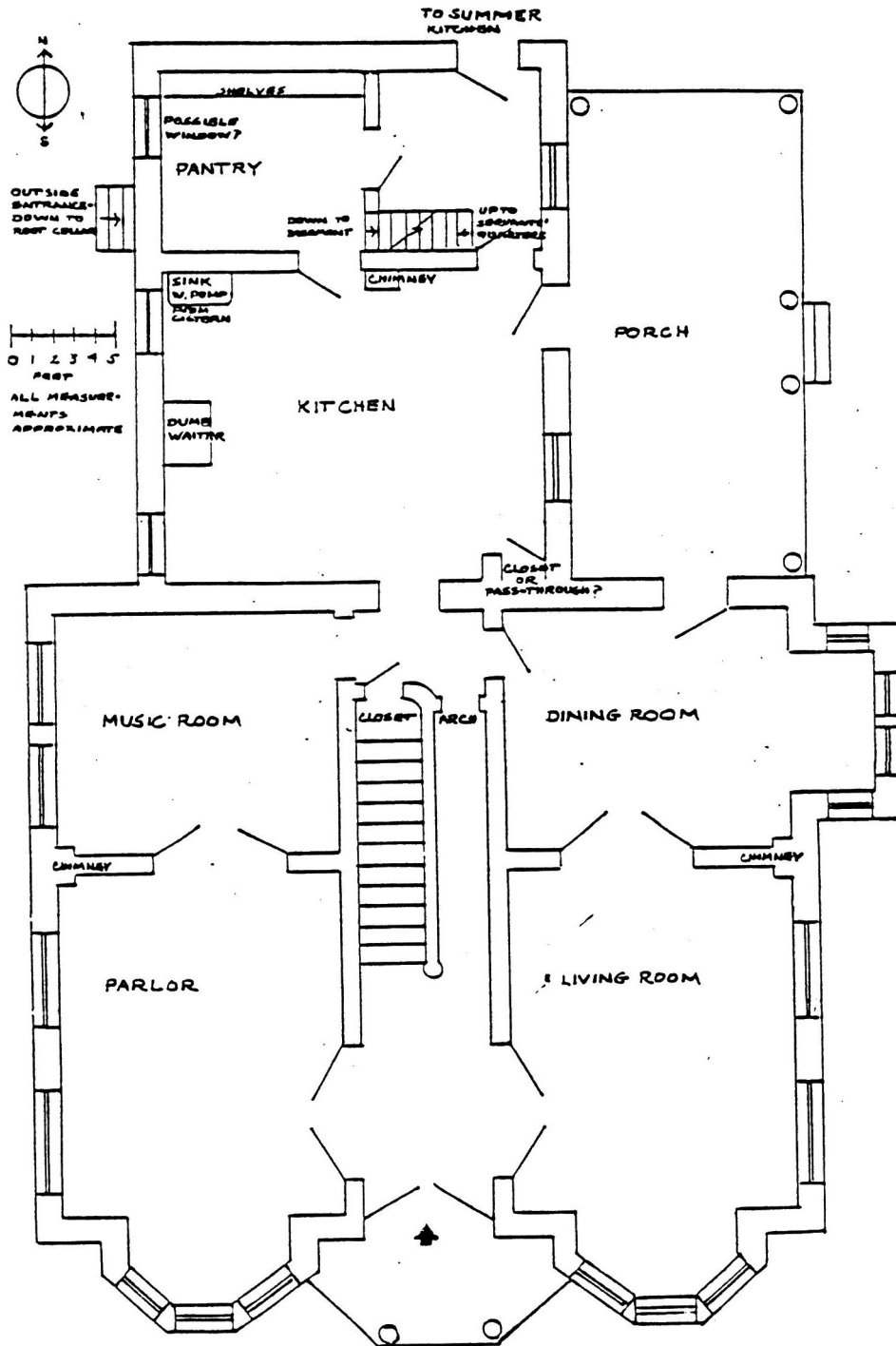


United States Department of the Interior
National Park Service

National Register of Historic Places Continuation Sheet

Section number 7 Page 6

CFN-259-11*6



NEWELL WHITING
1106 IOWA AVENUE
OWAIA, IOWA

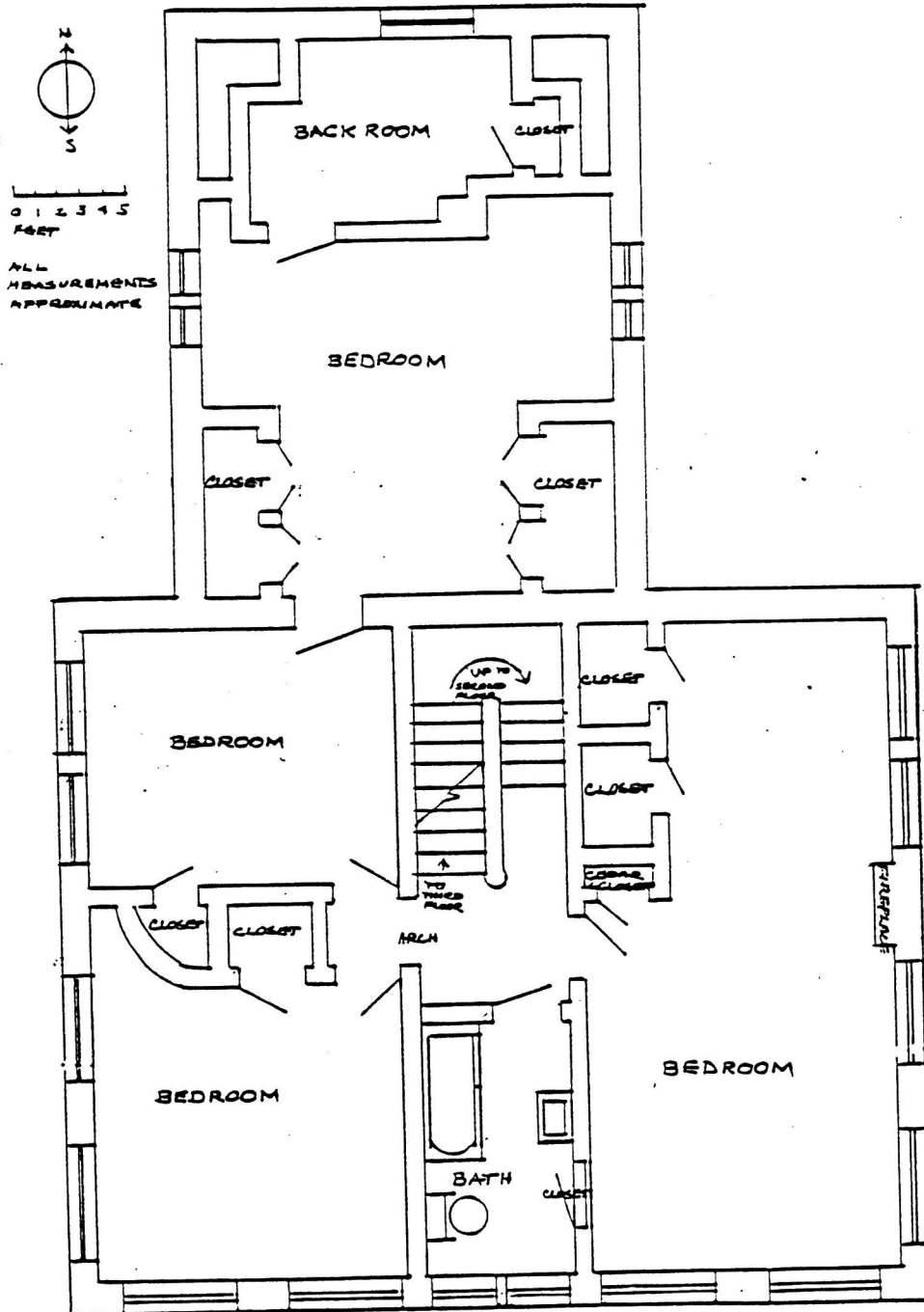
ORIGINAL FIRST FLOOR

United States Department of the Interior
National Park Service

National Register of Historic Places Continuation Sheet

Section number 7 Page 7

CFN-259-1115



NEWELL WHITING RESIDENCE
1106 IOWA AVENUE
ONAWA, IOWA

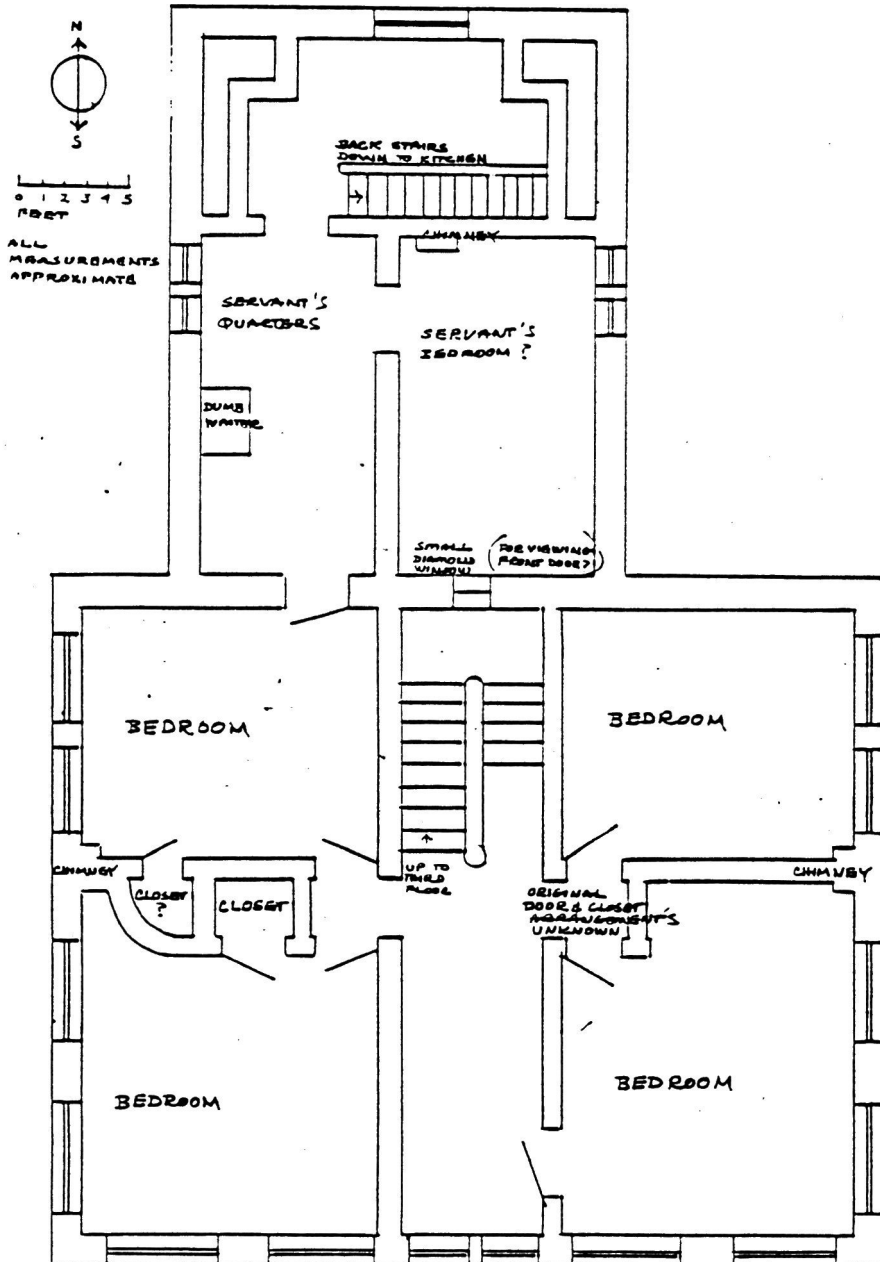
PRESENT SECOND FLOOR

United States Department of the Interior
National Park Service

National Register of Historic Places
Continuation Sheet

Section number 7 Page 8

CFN-259-1115



ORIGINAL SECOND FLOOR

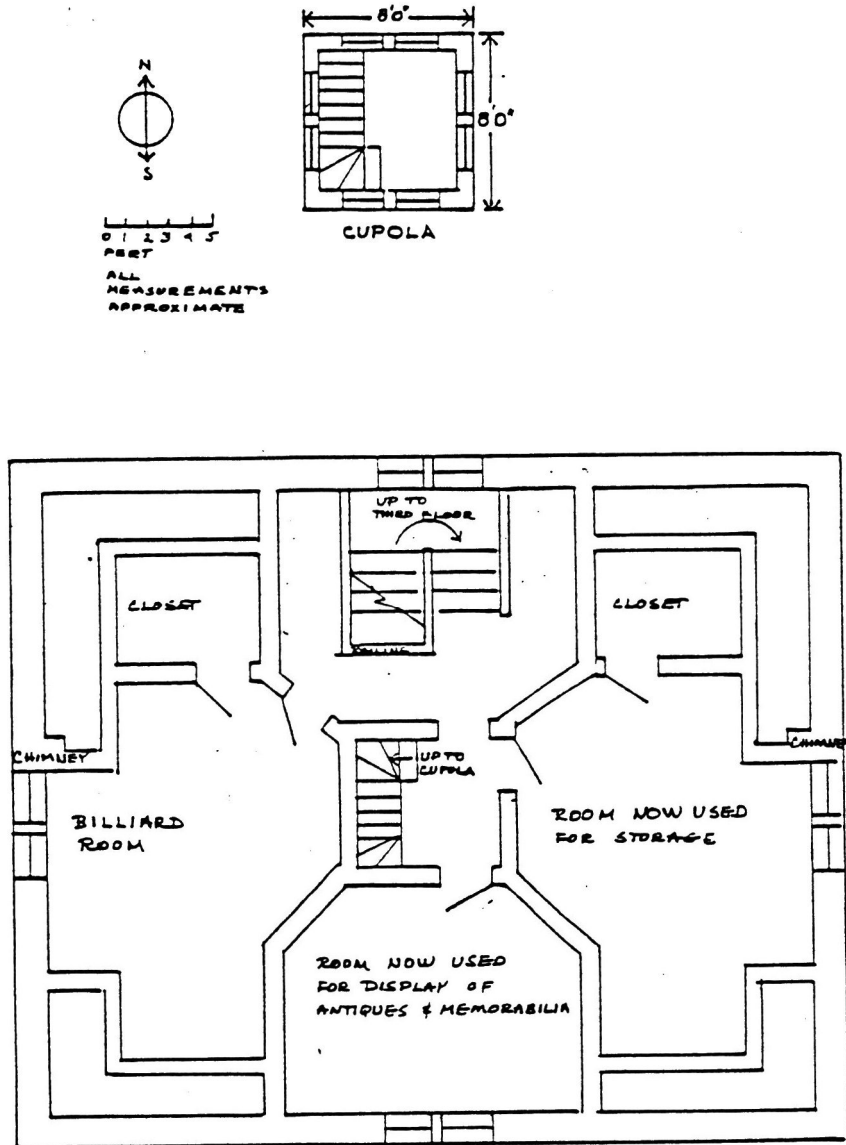
NEWELL WRITING RESIDENCE
1106 IOWA AVENUE
OWASO, IOWA

United States Department of the Interior
National Park Service

National Register of Historic Places Continuation Sheet

Section number 7 Page 9

CFN-259-1116



THIRD FLOOR (UNCHANGED)

NEWELL WHITING RESIDENCE
1106 IOWA AVENUE
OSAWA, IOWA

8. Statement of Significance

Certifying official has considered the significance of this property in relation to other properties:

nationally statewide locally

Applicable National Register Criteria A B C D

Criteria Considerations (Exceptions) A B C D E F G

Areas of Significance (enter categories from instructions)

Architecture

Period of Significance

c. 1880-1882

Significant Dates

N/A

Cultural Affiliation

N/A

Significant Person

N/A

Architect/Builder

Unknown

Unknown

State significance of property, and justify criteria, criteria considerations, and areas and periods of significance noted above.

The Newell A. Whiting house, constructed between 1880 and 1882, is the best preserved example of the Italianate style in Onawa and one of the best in Monona County. The property is significant under Criterion C: properties that embody the distinctive characteristics of an architectural style and that possess high artistic values, in this case being virtually a textbook example of that style. Although Onawa and Monona County have not been intensively surveyed, the results of a recent reconnaissance survey conducted by Bureau of Historic Preservation staff indicate that the claims for significance are valid.

The house is a fairly pure, if simple, interpretation of the Italianate style popular in the middle of the 19th century. The dominant architectural attributes and detailing are all Italianate; missing are string courses, quoins and arcading found in more elaborate buildings of the style. Foundation and all walls, exterior and interior, are of pressed local brick from the Turin Brickyard (about seven miles from Onawa). Newell Whiting, who had the house built in his later years for his second wife, was a hardware merchant and owned a sawmill. The woodwork and fine brass hardware reflect the best that was obtainable at that time and place. With few exceptions, all materials in the house are original. Some of the furniture was purchased from Whiting's widow by John R. Murphy; other pieces are antiques from the Murphy family. Thus, the house and its contents remain quite true to the period of construction.

See continuation sheet

9. Major Bibliographical References

Field Guide to American Architecture, A, Carole Rifkind, New American Library, New York, 1980

Historic Architecture Sourcebook, April M. Harris, editor; McGraw-Hill, New York, 1977

Identifying American Architecture, John J.-G. Blumenson, American Association for State and Local History, Nashville, Tennessee, 1977

What Style Is It? A Guide to American Architecture, John C. Poppiliers, S. Allen Chambers, Jr., Nancy B. Schwartz, Preservation Press, National Trust for Historic Preservation, Washington, D.C., 1983

History of Monona County, Iowa National publishing Co., Chicago, 1890
Newell A. Whiting biography, page 617; John R. Murphy biography, pages 450-451; Malden B. Pullen biography, pages 408-409 (woodworker on construction of house)

Onawa Gazette, articles about progress of construction of Newell Whiting home, June 17, 1880;

See continuation sheet

Previous documentation on file (NPS):

- preliminary determination of individual listing (36 CFR 67) has been requested
- previously listed in the National Register
- previously determined eligible by the National Register
- designated a National Historic Landmark
- recorded by Historic American Buildings Survey # _____
- recorded by Historic American Engineering Record # _____

Primary location of additional data:

- State historic preservation office
- Other State agency
- Federal agency
- Local government
- University
- Other

Specify repository: _____

10. Geographical Data

Acreege of property Less than one.

UTM References

A 1 5 7 4 0 1 7 0 4 6 5 6 6 2 0
 Zone Easting Northing

C _____

B _____
 Zone Easting Northing

D _____

See continuation sheet

Verbal Boundary Description

Lots 3, 4, 5, and 6, Block 67, Onawa, Monona County, Iowa

See continuation sheet

Boundary Justification

The boundary includes the four city lots that have historically been associated with the property.

See continuation sheet

11. Form Prepared By

name/title Carol Murphy (Mrs. John E. Murphy), wife of owner

organization _____ date January, 1990

street & number 7614 Sandy Point Road N.E. telephone (206) 491-7678

city or town Olympia state Washington zip code 98506

United States Department of the Interior
National Park Service

National Register of Historic Places Continuation Sheet

Section number 9 Page 1

CFN-259-1116

Onawa Gazette, October 14, 1880; March 24, 1881; May 26, 1881; October 27, 1881; February 2, 1882; May 4, 1882; May 11, 1882; May 26, 1882; available at Onawa Public Library.

Onawa Gazette, articles about wrought iron fence around property; July 24, 1884; August 14, 1884; available at Onawa Public Library.

Onawa Gazette, article about new plaster relief work and interior decor, July 11, 1889; available at Onawa Public Library.

Onawa Gazette, Newell A. Whiting obituary; October 1, 1891; available at Onawa Public Library

Onawa Gazette, article concerning purchase of property by John R. Murphy; March 15, 1894; available at Onawa Public Library

Onawa Gazette, John R. Murphy obituary; November 19, 1931; available at Onawa Public Library

Sioux City Journal, May 11, 1969, Section D, page 1, history of Whiting brothers and descendants, with photos of Whiting properties

Probate records, Newell A. Whiting, filed April 1, 1892; available at Monona County Courthouse

Interview with Ruth Evans (sister of Mrs. Charles Murphy and resident of the Whiting-Murphy house for over 35 years), by Carol Murphy, summer of 1978, verifying history of all antique furnishings in the house.

Interview with Jane McNeill (neighbor of John R. Murphy family and lifelong Onawa resident), by John E. and Carol Murphy, summer of 1980.

Letters from Jeanne M. Reistrup (interior designer for Esther Murphy from 1934-1976) to John and Carol Murphy, August 11, 1979, and January 20, 1980; verifying information on 1934 remodeling and on furnishings.

Notes from Charles and Joan Petersen (caretakers from 1979 to 1989), concerning landscaping and clues to original architectural details discovered during remodeling in 1983.

United States Department of the Interior
National Park Service

National Register of Historic Places Continuation Sheet

Section number photo Page 1

CFN-259-1116

Since these photos were taken, repairs have been made to the roof of the house. Some roof joists had to be replaced because of rot, copper valleys replaced old galvanized ones, and composition shingles were replaced. No architectural details were changed and the overall appearance of the roof is virtually identical.

1. Newell A. Whiting house, Onawa, Monona County, Iowa
Photographer: unknown
Date: 1980-1982
Negative location: unknown, probably one of Onawa newspapers (photo was used in article about house)
South facade of home from sidewalk, showing detail of wrought iron fence.
2. Newell A. Whiting house, Onawa, Monona County, Iowa
Photographer: John E. Murphy
Date: June 1986
Negative location: John E. Murphy
South facade of property from Iowa Avenue
3. Newell A. Whiting house, Onawa, Monona County, Iowa
Photographer: John E. Murphy
Date: June 1986
Negative location: John E. Murphy
East side of home, showing screened porch and rear ell.
4. Newell A. Whiting house, Onawa, Monona County, Iowa
Photographer: John E. Murphy
Date: June 1986
Negative location: John E. Murphy
North side of home (rear) from back yard, showing chimneys, cupola and rear ell.
5. Newell A. Whiting house, Onawa, Monona County, Iowa
Photographer: John E. Murphy
Date: June 1986
Negative location: John E. Murphy
West side of house from alley, showing rear ell with kitchen door and large window created from former garage door opening.
6. Newell A. Whiting house, Onawa, Monona County, Iowa
Photographer: John E. Murphy
Date: June 1986
Negative location: John E. Murphy
Garage with adjoining patio and garden, looking northwest.
7. Newell A. Whiting house, Onawa, Monona County, Iowa
Photographer: John E. Murphy
Date: June 1986
Negative location: John E. Murphy
Detail of eaves, showing formed metal modillions and hood moldings.

United States Department of the Interior
National Park Service

National Register of Historic Places Continuation Sheet

Section number photo Page 2

CFN-259-1116

8. Newell A. Whiting house, Onawa, Monona County, Iowa
Photographer: John E. Murphy
Date: June 1986
Negative location: John E. Murphy
South facade, showing front porch roof, windows and roof detailing, and pressed brick wall.
9. Newell A. Whiting house, Onawa, Monona County, Iowa
Photographer: John E. Murphy
Date: June 1986
Negative location: John E. Murphy
Double front doors (south facade) viewed from front porch; walnut with original brass hardware and etched glass panes. Transom above doors with etched glass pane not visible.
10. Newell A. Whiting house, Onawa, Monona County, Iowa
Photographer: John E. Murphy
Date: June 1986
Negative location: John E. Murphy
Double front doors (south facade) from entry hall; walnut painted white, with etched glass panes, etched glass transom and original brass hardware.
11. Newell A. Whiting house, Onawa, Monona County, Iowa
Photographer: John E. Murphy
Date: June 1986
Negative location: John E. Murphy
Entry hall looking north, showing staircase with carved bannister and newelpost and archway.
12. Newell A. Whiting house, Onawa, Monona County, Iowa
Photographer: John E. Murphy
Date: June 1986
Negative location: John E. Murphy
Detail of stairway from second to third story.
13. Newell A. Whiting house, Onawa, Monona County, Iowa
Photographer: John E. Murphy
Date: June 1986
Negative location: John E. Murphy
East wall of living room looking southeast, showing fireplace.

United States Department of the Interior
National Park Service

**National Register of Historic Places
Continuation Sheet**

Section number photo Page 3

CFN-259-1116

14. Newell A. Whiting house, Onawa, Monona County, Iowa
Photographer: John E. Murphy
Date: June 1986
Negative location: John E. Murphy
Detail of southwest bedroom on second floor, showing curved wall, woodwork, and wide board softwood floor.
15. Newell A. Whiting house, Onawa, Monona County, Iowa
Photographer: Unknown
Date: Unknown; before 1934
Negative location: Unknown
View of property from southeast intersection of Iowa Avenue and Eleventh Street; copy of historic photo belonging to Murphy family
16. Newell A. Whiting house, Onawa, Monona County, Iowa
Photographer: Unknown
Date: Unknown; date of November 1956 on snapshot is not accurate. Apparently a copy of an earlier photo.
Negative location: Unknown
View of east side of house. Photo taken prior to 1934 remodeling; showing frame summer kitchen at rear, side porch is unscreened and fireplace not yet added to living room and master bedroom (requiring bricking up of windows).
17. Newell A. Whiting house, Onawa, Monona County, Iowa
Photographer: Unknown
Date: Sometime between 1894 and 1931 (the time home was occupied by John R. Murphy)
Negative location: Unknown
View of south and east sides of house from Iowa Avenue. Copy of postcard owned by Murphy family.

UNITED STATES DEPARTMENT OF THE INTERIOR
NATIONAL PARK SERVICE

NATIONAL REGISTER OF HISTORIC PLACES
EVALUATION/RETURN SHEET

REQUESTED ACTION: NOMINATION

PROPERTY Whiting, Newell A., House
NAME:

MULTIPLE
NAME:

STATE & COUNTY: IOWA, Monona

DATE RECEIVED: 7/13/90 DATE OF PENDING LIST: 7/25/90
DATE OF 16TH DAY: 8/10/90 DATE OF 45TH DAY: 8/27/90
DATE OF WEEKLY LIST:

REFERENCE NUMBER: 90001216

NOMINATOR: STATE

REASONS FOR REVIEW:

APPEAL: N DATA PROBLEM: N LANDSCAPE: N LESS THAN 50 YEARS: N
OTHER: N PDIL: N PERIOD: N PROGRAM UNAPPROVED: N
REQUEST: N SAMPLE: N SLR DRAFT: N NATIONAL: N

COMMENT WAIVER: N

ACCEPT RETURN REJECT 8/10/90 DATE

Entered in the
National Register

ABSTRACT/SUMMARY COMMENTS:

RECOM./CRITERIA _____
REVIEWER _____
DISCIPLINE _____
DATE _____

DOCUMENTATION see attached comments Y/N see attached SLR Y/N

CLASSIFICATION

count resource type

STATE/FEDERAL AGENCY CERTIFICATION

FUNCTION

historic current

DESCRIPTION

architectural classification
 materials
 descriptive text

SIGNIFICANCE

Period Areas of Significance--Check and justify below

Specific dates Builder/Architect
Statement of Significance (in one paragraph)

summary paragraph
 completeness
 clarity
 applicable criteria
 justification of areas checked
 relating significance to the resource
 context
 relationship of integrity to significance
 justification of exception
 other

BIBLIOGRAPHY

GEOGRAPHICAL DATA

acreage verbal boundary description
 UTM's boundary justification

ACCOMPANYING DOCUMENTATION/PRESENTATION

sketch maps USGS maps photographs presentation

OTHER COMMENTS

Questions concerning this nomination may be directed to

_____ Phone _____

Signed _____

Date _____



D.N.A. WHITING HOME, MONONA COUNTY, IOWA

① N.A. Whiting House
Monona Co.
Iowa



② N. A. WHITING HOME

NA WAITING

(2)

NA. WAITING House
Monona Co.
Iowa



③ N.A. Whiting House
Monona Co.
Iowa



④ N.A. Whiting House
Monona Co. Iowa



⑤ N. A. Whiting House
Monona Co., Iowa



⑥ N.A Whiting House
Monona Co.
Iowa



⑦ N.A. Whiting House
Monona Co,
Iowa



⑧ N. A. Whiting House
Monona Co. Iowa



9. W. A. Whiting House
Monona Co,
Iowa



10. N. A. Whiting House
Monona Co,
Iowa

(1)



(11) N. A. Whiting House
Monona Co. Iowa



(12) W. A. Whiting House
Monona Co.
Iowa



⑬ N. A. Whiting House
Monona Co. Iowa



14. N.A. Whiting House
Monona Co. Iowa

14



(15) N. A. Whiting House
Monona Co.

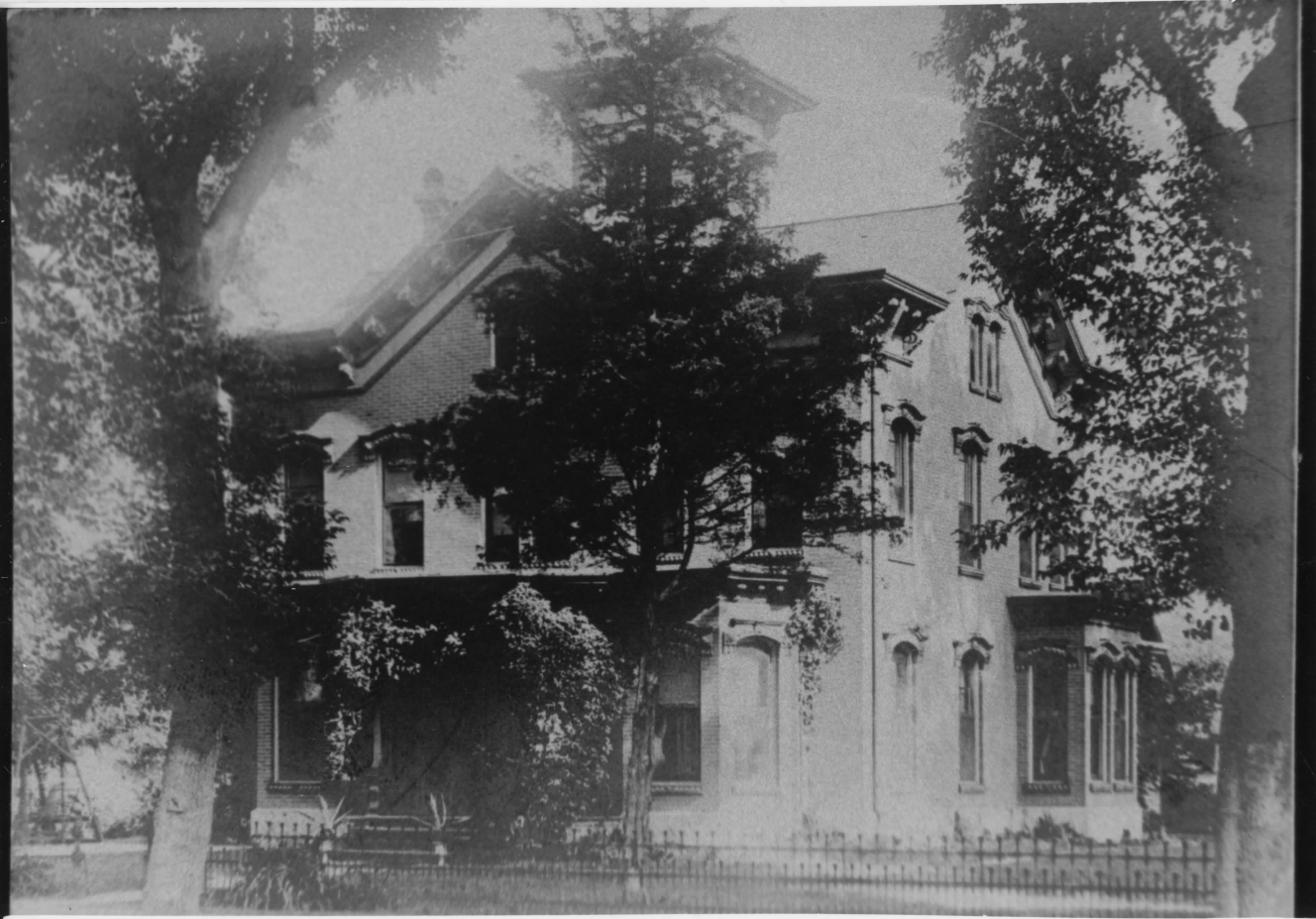
Iowa

NOV 9

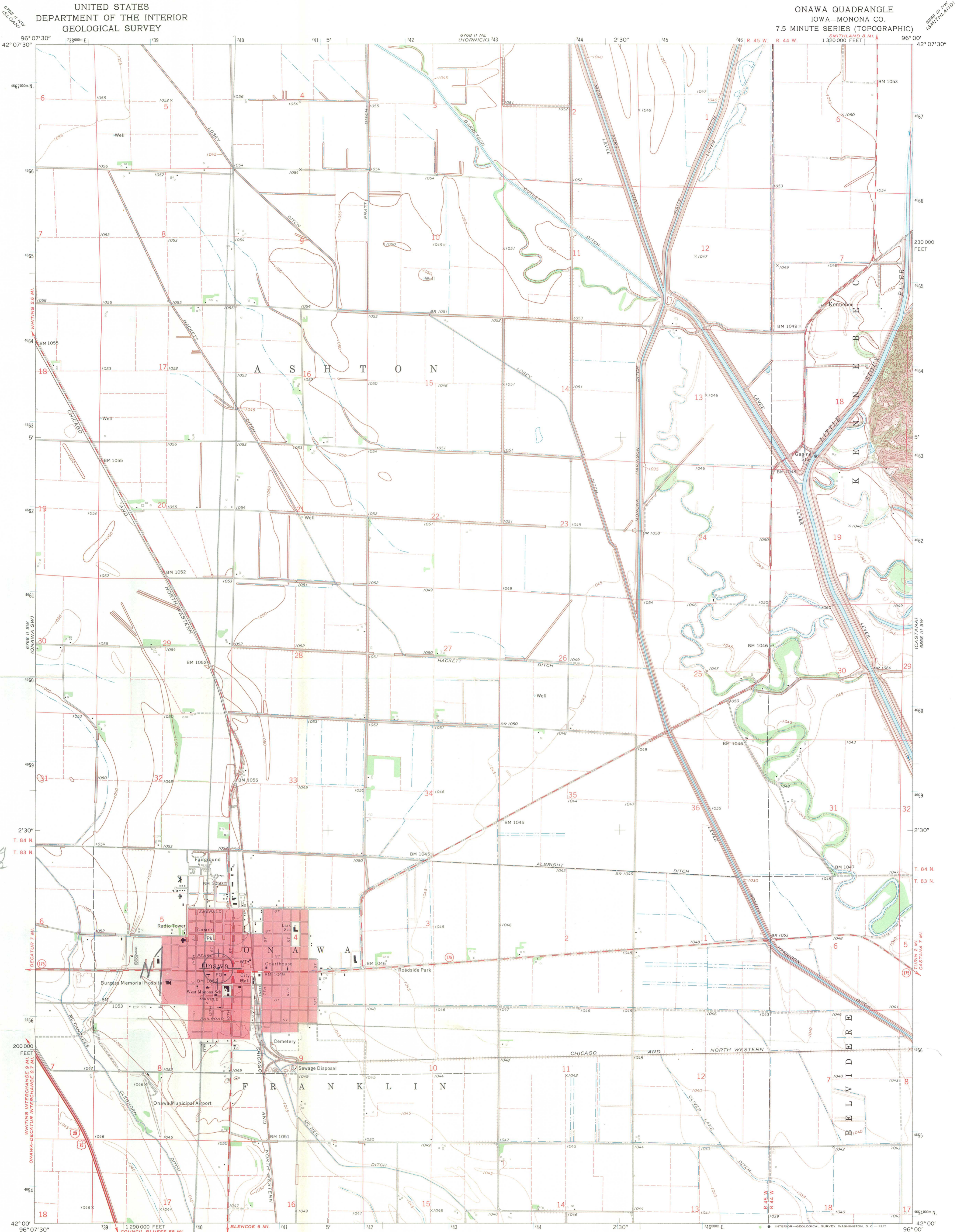
1956



(16) N. A. Whiting House
Monroe Co.
Iowa

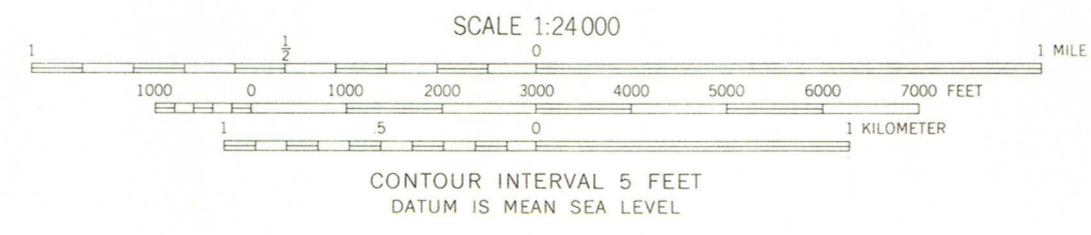


(17) N. A. Whiting House
Monona Co,
Iowa



Newell A. Whiting
House
Onawa
Monona Co.
Iowa
E. 740170
N. 4656680

Mapped, edited, and published by the Geological Survey
Control by USGS and USC&GS
Topography by photogrammetric methods from aerial
photographs taken 1965 and planetable surveys 1969
Polyconic projection. 1927 North American datum
10,000-foot grid based on Iowa coordinate system, north zone
1000-meter Universal Transverse Mercator grid ticks,
zone 14, shown in blue
Red tint indicates area in which only landmark buildings are shown
Fine red dashed lines indicate selected fence and field lines where
generally visible on aerial photographs. This information is unchecked



ROAD CLASSIFICATION
Primary highway, all weather, hard surface
Secondary highway, all weather, hard surface
Light-duty road, all weather, improved surface
Unimproved road, fair or dry weather
Interstate Route
U. S. Route
State Route

THIS MAP COMPLIES WITH NATIONAL MAP ACCURACY STANDARDS
FOR SALE BY U. S. GEOLOGICAL SURVEY, DENVER, COLORADO 80225, OR WASHINGTON, D. C. 20242
AND BY THE IOWA GEOLOGICAL SURVEY, IOWA CITY, IOWA 52240
A FOLDER DESCRIBING TOPOGRAPHIC MAPS AND SYMBOLS IS AVAILABLE ON REQUEST

ONAWA, IOWA
N4200—W9600/7.5
1969



State Historical Society of Iowa

The Historical Division of the Department of Cultural Affairs

RECEIVED

JUL 13 1990

NATIONAL
REGISTER

July 9, 1990

Ms. Carol Shull, Chief
National Register of Historic Places
Interagency Resources Division
National Park Service
Department of the Interior
PO Box 37127
Washington, D.C. 20013-1727

Dear Ms. Shull:

Enclosed please find the following National Register submissions:

Newell A. Whiting House, Onawa, Monona County

Trinity Memorial Episcopal Church, Mapleton, Monona County

Please list these nominations at your earliest convenience.

Sincerely,

Lisa K. Linhart

Lisa K. Linhart
National Register Coordinator

402 Iowa Avenue
Iowa City, Iowa 52240
(319) 335-3916

Capitol Complex
Des Moines, Iowa 50319
(515) 281-5111

Montauk
Box 372
Clermont, Iowa 52135
(319) 423-7173